

	Current	Δ from YD	Δ from 7D Avg
Nat Gas Prompt	\$ 3.86 ▲	\$ 0.05 ▲	\$ 0.08 ▲

	Current	Δ from YD	Δ from 7D Avg
WTI Prompt	\$ 79.99 ▲	\$ 0.53 ▲	\$ 3.4 ▲

	Current	Δ from YD	Δ from 7D Avg
Brent Prompt	\$ 82.63 ▲	\$ 0.64 ▲	\$ 3.3 ▲

Page Menu

[Short-term Weather Model Outlooks](#)

[Lower 48 Component Models](#)

[Regional S/D Models Storage Projection](#)

[Weather Model Storage Projection](#)

[Supply – Demand Trends](#)

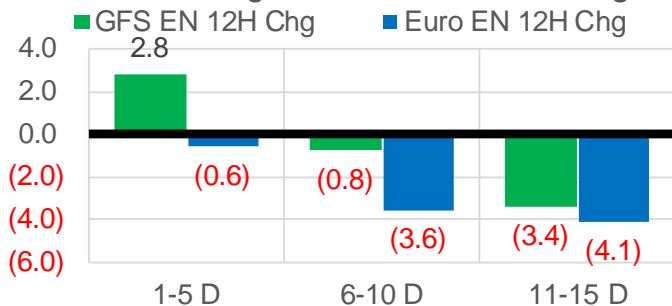
[Nat Gas Options Volume and Open Interest](#)

[Nat Gas Futures Open Interest](#)

[Price Summary](#)

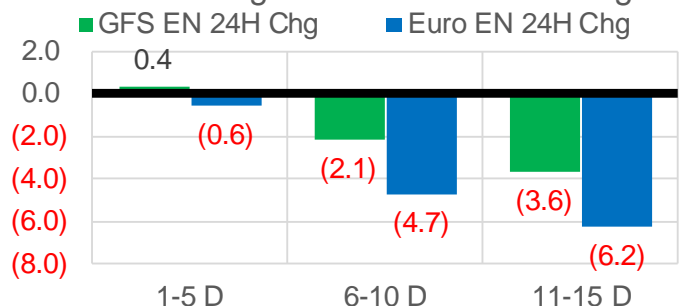
Vs. 12H Ago

L48 Region - 00z TDD vs 12H Ago



Vs. 24H Ago

L48 Region - 00z TDD vs 24H Ago



	Current	Δ from YD	Δ from 7D Avg
US Dry Production	92.5 ▲	0.28 ▲	-0.80 ▼

	Current	Δ from YD	Δ from 7D Avg
US Power Burns	30.7 ▼	-2.25 ▼	0.89 ▲

	Current	Δ from YD	Δ from 7D Avg
US ResComm	54.4 ▲	3.36 ▲	10.41 ▲

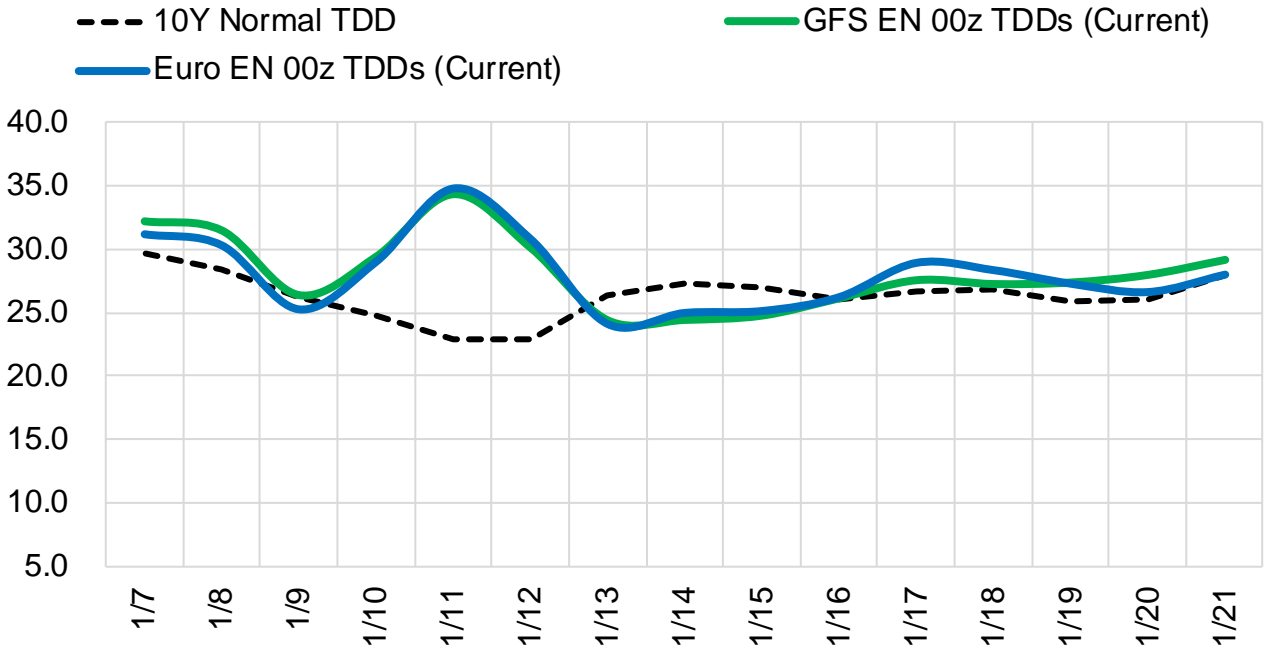
	Current	Δ from YD	Δ from 7D Avg
Canadian Imports	6.3 ▲	0.24 ▲	0.62 ▲

	Current	Δ from YD	Δ from 7D Avg
Net LNG Exports	12.2 ▲	0.62 ▲	0.26 ▲

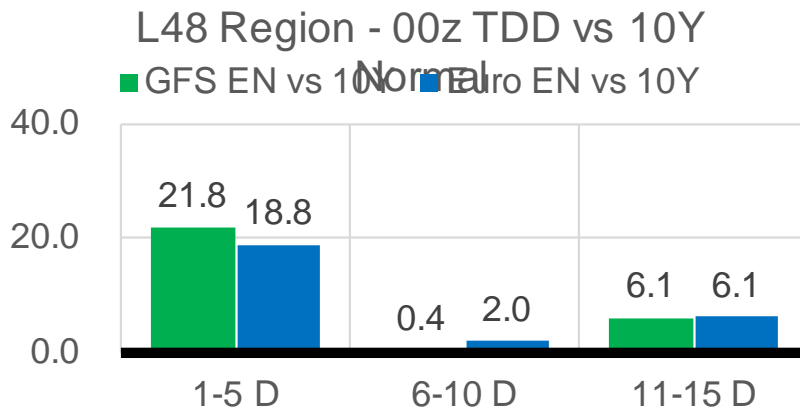
	Current	Δ from YD	Δ from 7D Avg
Mexican Exports	6.4 ▼	0.00 ▼	0.53 ▲

Short-term Weather Model Outlooks (00z)

L48 Region



Vs. 10Y Normal



Source: WSI , Bloomberg

Lower 48 Component Models

Daily Balances

	1-Jan	2-Jan	3-Jan	4-Jan	5-Jan	6-Jan	7-Jan	DoD	vs. 7D
Lower 48 Dry Production	93.4	90.3	93.4	93.0	93.0	92.3	92.5	▲ 0.3	▼ 0.0
Canadian Imports	5.4	6.0	6.8	5.6	5.5	6.0	6.3	▲ 0.2	▲ 0.4
L48 Power	26.4	30.5	32.0	30.0	30.8	32.9	30.7	▼ -2.2	▲ 0.2
L48 Residential & Commercial	35.5	46.2	53.4	47.1	44.0	51.1	54.4	▲ 3.4	▲ 8.2
L48 Industrial	23.2	24.8	25.5	24.5	23.9	24.2	24.0	▼ -0.2	▼ -0.3
L48 Lease and Plant Fuel	5.1	4.9	5.1	5.1	5.1	5.0	5.0	▼ 0.0	▼ 0.0
L48 Pipeline Distribution	3.0	3.7	4.1	3.7	3.6	4.1	4.1	▲ 0.1	▲ 0.4
L48 Regional Gas Consumption	93.1	110.2	120.2	110.4	107.4	117.3	118.3	▲ 1.0	▲ 8.5
Net LNG Delivered	11.94	11.67	11.84	12.28	12.23	11.55	12.18	▲ 0.6	▲ 0.3
Total Mexican Exports	5.1	5.2	6.1	6.3	6.4	6.4	6.4	▼ 0.0	▲ 0.5
Implied Daily Storage Activity	-11.4	-30.7	-37.9	-30.4	-27.6	-37.0	-38.1		
EIA Reported Daily Storage Activity									
Daily Model Error									

EIA Storage Week Balances

	3-Dec	10-Dec	17-Dec	24-Dec	31-Dec	7-Jan	WoW	vs. 4W
Lower 48 Dry Production	96.8	96.6	96.5	96.8	98.6	93.3	▼ -5.3	▼ -3.8
Canadian Imports	5.6	5.3	4.6	5.0	4.2	5.6	▲ 1.4	▲ 0.9
L48 Power	28.7	29.1	28.4	29.9	26.4	29.8	▲ 3.3	▲ 1.3
L48 Residential & Commercial	33.1	35.4	31.4	40.3	33.4	44.0	▲ 10.6	▲ 8.9
L48 Industrial	22.5	23.7	23.7	24.0	22.0	24.0	▲ 2.0	▲ 0.7
L48 Lease and Plant Fuel	5.3	5.2	5.2	5.2	5.4	5.1	▼ -0.3	▼ -0.2
L48 Pipeline Distribution	3.2	3.2	3.0	3.5	3.0	3.6	▲ 0.6	▲ 0.4
L48 Regional Gas Consumption	92.9	96.7	91.7	103.0	90.2	106.5	▲ 16.3	▲ 11.1
Net LNG Exports	11.8	12.0	11.9	12.7	12.3	11.9	▼ -0.4	▼ -0.3
Total Mexican Exports	6.4	6.4	6.2	6.1	5.8	5.9	▲ 0.1	▼ -0.2
Implied Daily Storage Activity	-8.7	-13.2	-8.7	-20.0	-5.4	-25.3	-19.9	
EIA Reported Daily Storage Activity	-8.4	-12.6	-7.9	-19.4	-4.4			
Daily Model Error	-0.3	-0.6	-0.9	-0.5	-1.0			

Monthly Balances

	2Yr Ago Jan-20	LY Jan-21	Sep-21	Oct-21	Nov-21	Dec-21	MTD Jan-22	MoM	vs. LY
Lower 48 Dry Production	94.6	91.4	93.4	94.3	95.9	97.1	92.6	▼ -4.5	▲ 1.1
Canadian Imports	4.8	6.3	5.1	5.4	5.3	4.8	5.9	▲ 1.1	▼ -0.4
L48 Power	29.9	28.3	33.1	30.5	28.8	28.4	30.4	▲ 2.1	▲ 2.2
L48 Residential & Commercial	41.7	44.0	8.8	12.5	29.4	34.4	46.2	▲ 11.7	▲ 2.2
L48 Industrial	24.5	23.8	20.2	21.0	22.4	23.2	24.4	▲ 1.1	▲ 0.5
L48 Lease and Plant Fuel	5.1	5.0	5.1	5.2	5.2	5.3	5.1	▼ -0.2	▲ 0.1
L48 Pipeline Distribution	3.6	3.5	2.3	2.4	3.1	3.1	3.7	▲ 0.6	▲ 0.2
L48 Regional Gas Consumption	104.8	104.6	69.4	71.5	88.9	94.5	109.8	▲ 15.3	▲ 5.2
Net LNG Exports	8.4	10.5	10.3	10.6	11.4	12.1	11.9	▼ -0.2	▲ 1.4
Total Mexican Exports	5.1	6.2	6.7	6.6	6.1	6.1	5.9	▼ -0.2	▼ -0.2
Implied Daily Storage Activity	-18.9	-23.5	12.1	11.0	-5.2	-10.9	-29.1		
EIA Reported Daily Storage Activity									
Daily Model Error									

Source: Bloomberg, analytix.ai

Daily Average Generation Data

Nuclear Generation Daily Average - GWh (NRC)

	30-Dec	31-Dec	1-Jan	2-Jan	3-Jan	4-Jan	5-Jan	DoD	vs. 7D
NRC Nuclear Daily Output	91.5	91.4	91.4	91.0	91.5	91.4	91.1	-0.3	-0.2
NRC Nuclear Max Capacity	104.9	104.9	104.9	104.9	104.9	104.9	104.9	0.0	0.0
NRC Nuclear Outage	13.4	13.5	13.5	13.9	13.4	13.4	13.8	0.3	0.2
NRC % Nuclear Cap Utilization	93.0	93.0	92.9	92.5	93.0	93.0	92.7	-0.3	-0.2

Wind Generation Daily Average - MWh (EIA)

	30-Dec	31-Dec	1-Jan	2-Jan	3-Jan	4-Jan	5-Jan	DoD	vs. 7D
CALI Wind	1250	2958	1402	651	1546	2595	1583	-1011	-150
TEXAS Wind	9205	13872	17498	12326	9691	17944	10851	-7093	-2572
US Wind	36927	54363	62058	42057	45763	75336	67505	-7831	14754

Generation Daily Average - MWh (EIA)

	30-Dec	31-Dec	1-Jan	2-Jan	3-Jan	4-Jan	5-Jan	DoD	vs. 7D
US Wind	36927	54363	62058	42057	45763	75336	67505	-7831	14754
US Solar	5278	5510	7716	8388	8867	8824	8521	-304	1090
US Petroleum	3544	2260	2303	3007	4104	2695	2496	-198	-489
US Other	7485	7417	7452	7392	8244	8827	8565	-262	762
US Coal	89604	81214	80210	92826	102025	98428	99894	1467	9176
US Nuke	96483	96412	96050	96052	96542	96538	96251	-288	-96
US Hydro	34636	33578	33606	33241	36443	35703	33289	-2414	-1245
US Gas	150630	130528	117509	149108	180734	166820	157834	-8986	8612

See National Wind and Nuclear daily charts

Source: Bloomberg, analytix.ai

Storage Week Average Generation Data

Nuclear Generation Weekly Average - GWh (NRC)

	3-Dec	10-Dec	17-Dec	24-Dec	31-Dec	7-Jan	WoW	WoW Bcf/d Impact
NRC Nuclear Daily Output	87.8	88.0	90.0	92.1	92.1	91.3	-0.7	0.1
NRC Nuclear Max Capacity	104.9	104.9	104.9	104.9	104.9	104.9	0.0	
NRC Nuclear Outage	17.1	16.9	14.9	12.8	12.8	13.6	0.7	
NRC % Nuclear Cap Utilization	0.1	0.1	0.1	0.1	0.1	0.1	0.0	

Wind Generation Weekly Average - MWh (EIA)

	3-Dec	10-Dec	17-Dec	24-Dec	31-Dec	7-Jan	WoW	WoW Bcf/d Impact
CALI Wind	363	1263	1709	943	2591	1760	-831	0.1
TEXAS Wind	8733	12216	16176	11007	13891	13290	-601	0.1
US Wind	47210	51470	68300	48623	52981	59227	6246	-1.1
					4357.3			
					9%			

Generation Weekly Average - MWh (EIA)

	3-Dec	10-Dec	17-Dec	24-Dec	31-Dec	7-Jan	WoW	WoW Bcf/d Impact
US Wind	47210	51470	68300	48623	52981	59227	6246	-1.1
US Solar	9918	7406	7559	7087	6915	8050	1134	-0.2
US Petroleum	3166	3441	2701	3581	3084	2766	-318	0.1
US Other	8483	8401	8302	8531	7545	8066	521	-0.1
US Coal	82287	82743	77026	87476	79866	93499	13632	-2.5
US Nuke	92816	92983	95055	97425	97083	96299	-783	0.1
US Hydro	26777	29626	30257	32560	31271	34164	2893	-0.5
US Gas	155286	159457	148905	166309	134945	151481	16536	

See National Wind and Nuclear daily charts

Source: Bloomberg, analytix.ai

Monthly Average Generation Data

Nuclear Generation Monthly Average - GWh (NRC)

	2Yr Ago	LY	MTD						
	Same 30 days	Same 30 days	Oct-21	Nov-21	Dec-21	Jan-22	Last 30 days	MoM (MTD vs LY)	Last 30 days YoY
NRC Nuclear Daily Output	93.6	89.8	75.5	82.7	90.3	91.3	91.3	1.0	1.5
NRC Nuclear Max Capacity	104.9	104.9	104.9	104.9	104.9	104.9	104.9	0.0	0.0
NRC Nuclear Outage	11.3	15.1	29.4	22.2	14.6	13.6	13.6	-1.0	-1.5
NRC % Nuclear Cap Utilization	95.2	91.3	76.8	84.1	91.8	92.8	92.8	1.0	1.5

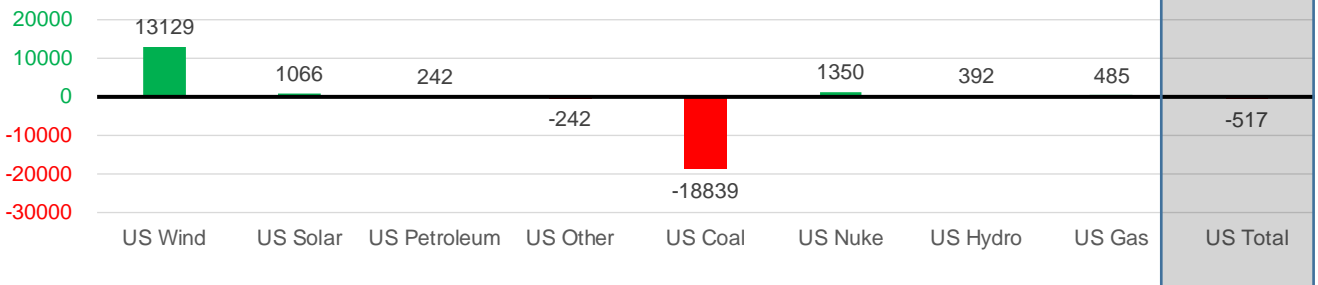
Wind Generation Monthly Average - MWh (EIA)

	2Yr Ago	LY	MTD						
	Same 30 days	Same 30 days	Oct-21	Nov-21	Dec-21	Jan-22	Last 30 days	MoM (MTD vs LY)	Last 30 days YoY
CALI Wind	1081	1157	1765	1252	1585	1563	1796	-21	638
TEXAS Wind	9453	12107	11565	11869	12927	12859	13607	-68	1500
US Wind	38950	44777	43142	49974	54742	61104	57906	6362	13129

Generation Monthly Average - MWh (EIA)

	2Yr Ago	LY	MTD						
	Same 30 days	Same 30 days	Oct-21	Nov-21	Dec-21	Jan-22	Last 30 days	MoM (MTD vs LY)	Last 30 days YoY
US Wind	38950	44777	43142	49974	54742	61104	57906	▼-3198.4	▲13129
US Solar	4609	6296	11059	9690	7351	8480	7363	▼-1116.9	▲1066
US Petroleum	3627	2780	3239	3045	3135	2800	3021	▲222	▲242
US Other	8064	8379	11109	8435	8197	8230	8137	▼-93	▼-242
US Coal	88074	103909	84433	80848	81683	96167	85070	▼-11097	▼-18839
US Nuke	97796	95021	77089	87404	95409	96276	96371	▲95	▲1350
US Hydro	29432	31707	24078	26593	30802	34123	32098	▼-2025	▲392
US Gas	153794	150803	159049	151462	152201	155382	151287	▼-17214	▲485
US Total	429288	442198	413354	417925	433825	463148	441682	▼-31230	▼-517

Last 30 days YoY



See National Wind and Nuclear daily charts

Source: Bloomberg, analytix.ai

Regional S/D Models Storage Projection

Week Ending 7-Jan

	Daily Raw Storage	Daily Adjustment Factor	Daily Average Storage Activity (Adjusted) *	Weekly Adjusted Storage Activity
L48	-25.6	1.0	-24.6	-172
East	-7.0	2.6	-4.4	-31
Midwest	-7.2	0.8	-6.4	-45
Mountain	0.9	-3.3	-2.3	-16
South Central	-10.9	1.8	-9.1	-64
Pacific	-1.4	-0.9	-2.3	-16

*Adjustment Factor is calculated based on historical regional deltas

U.S. underground natural gas storage facilities by type (July 2015)

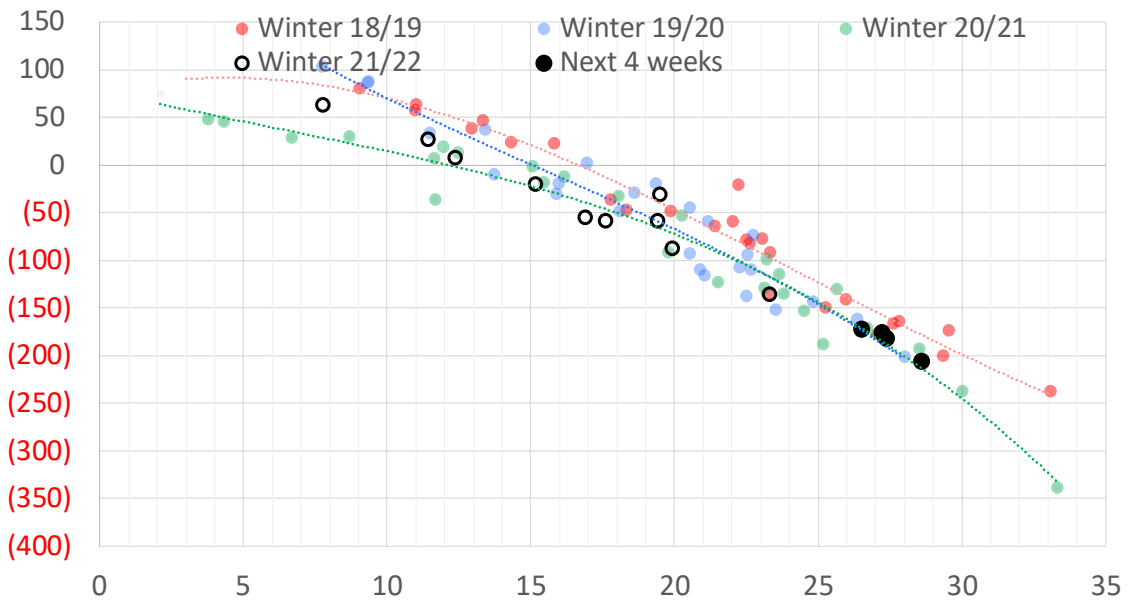


Weather Model Storage Projection

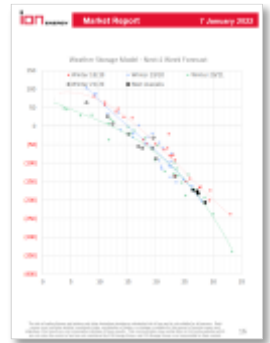
Next report
and beyond

Week Ending	GWDDs	Week Storage Projection
07-Jan	26	-172
14-Jan	29	-206
21-Jan	27	-182
28-Jan	27	-175

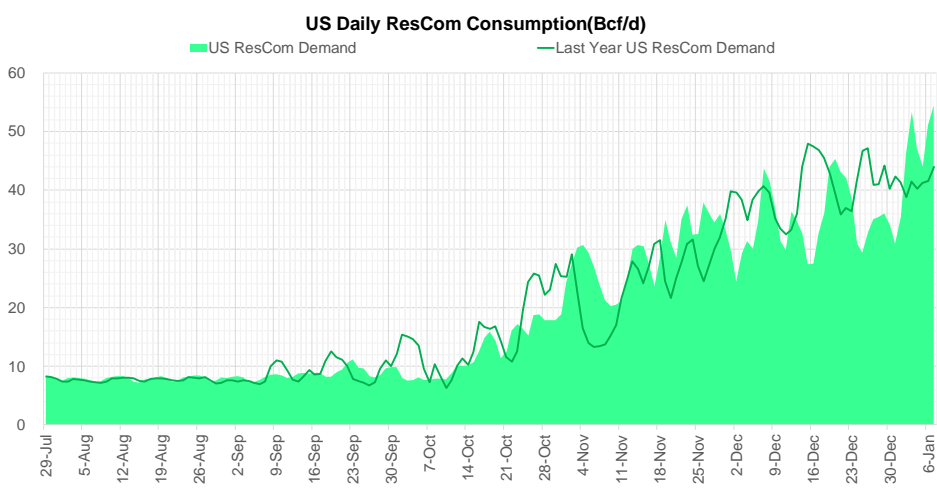
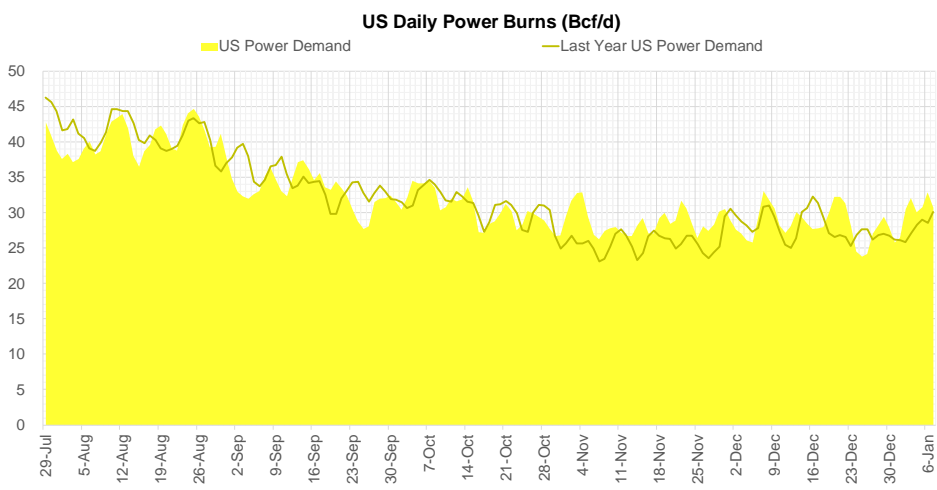
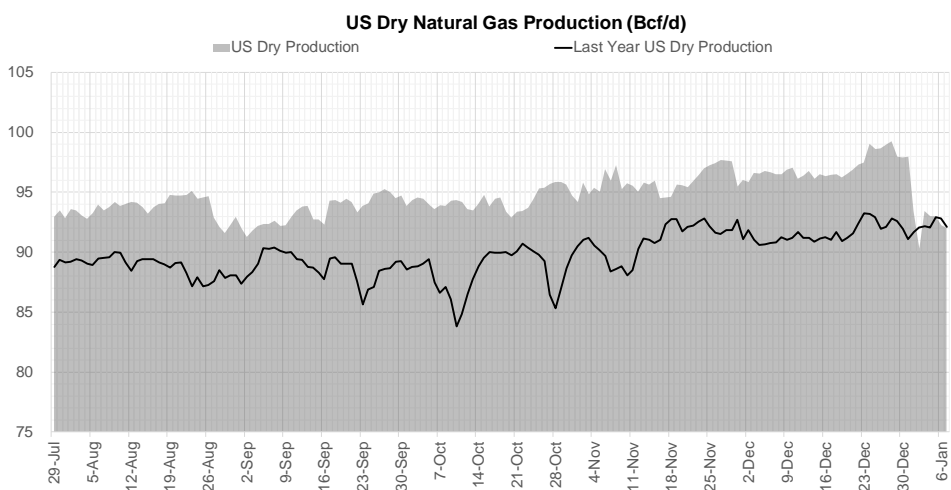
Weather Storage Model - Next 4 Week Forecast



Go to larger image



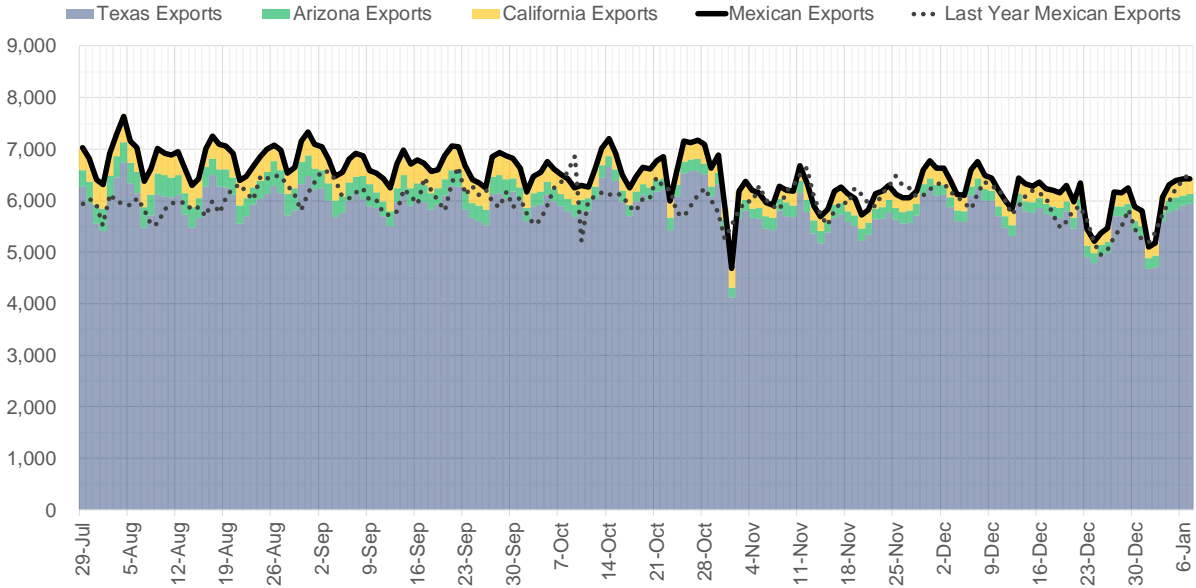
Supply – Demand Trends



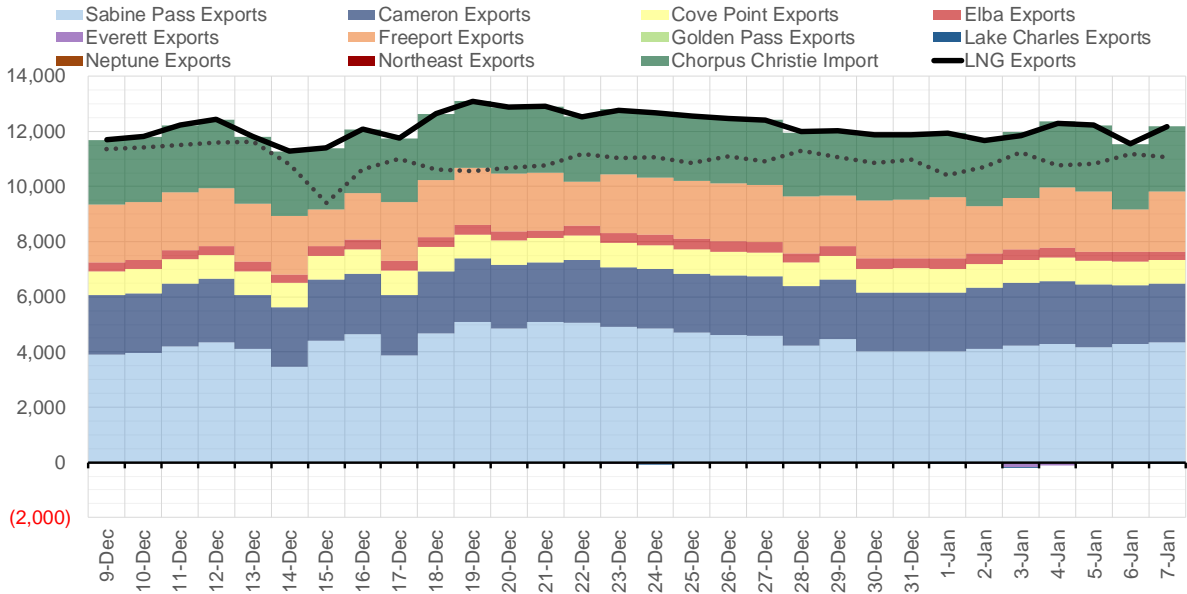
Source: Bloomberg

The risk of trading futures and options and other derivatives involves a substantial risk of loss and is not suitable for all persons. Each person must consider whether a particular trade, combination of trades, or strategy is suitable for that person's financial means and objectives. Past results are not necessarily indicative of future results. This communication may contain links to third party websites which are not under the control of and are not maintained by ION Energy Group, and ION Energy Group is not responsible for their content.

Mexican Exports (MMcf/d)



Net LNG Exports - Last 30 days (MMcf/d)



Source: Bloomberg

The risk of trading futures and options and other derivatives involves a substantial risk of loss and is not suitable for all persons. Each person must consider whether a particular trade, combination of trades, or strategy is suitable for that person's financial means and objectives. Past results are not necessarily indicative of future results. This communication may contain links to third party websites which are not under the control of and are not maintained by ION Energy Group, and ION Energy Group is not responsible for their content.

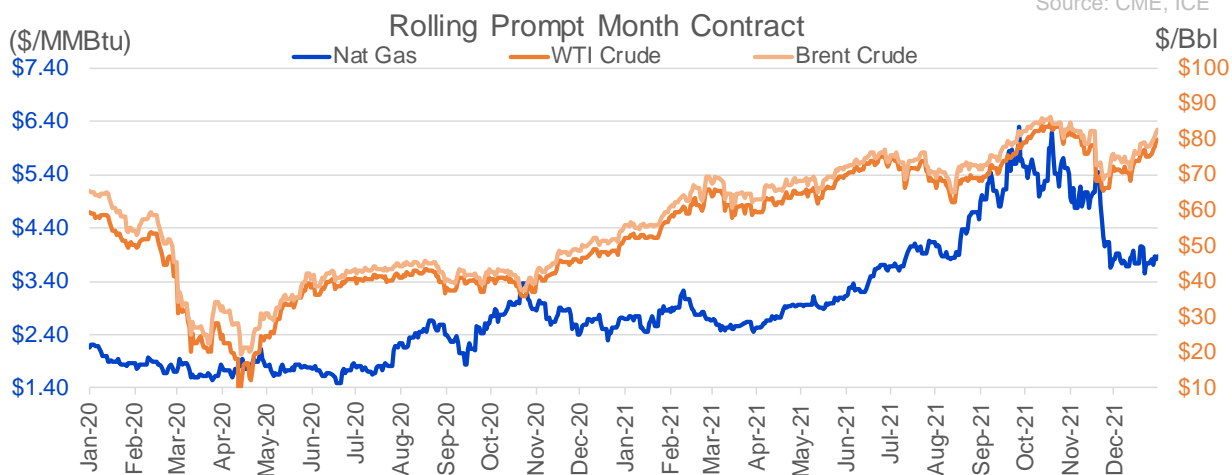
Nat Gas Options Volume and Open Interest CME and ICE Combined

CONTRACT MONTH	CONTRACT YEAR	PUT/CALL	STRIKE	CUMULATIVE VOL	CONTRACT MONTH	CONTRACT YEAR	PUT/CALL	STRIKE	CUMULATIVE OI
2	2022	P	3.50	3606	3	2022	C	10.00	36028
3	2022	C	8.00	2011	3	2022	C	5.00	32737
2	2022	C	4.00	1766	2	2022	C	4.00	29292
3	2022	P	3.25	1589	3	2022	C	8.00	27733
4	2022	C	5.50	1500	3	2022	C	4.00	26374
5	2022	C	5.50	1500	2	2022	C	5.00	25236
2	2022	C	4.25	1478	3	2022	C	6.00	22113
2	2022	P	3.00	1337	3	2022	P	2.50	21546
4	2022	P	3.00	1329	12	2022	C	5.00	21297
3	2022	C	4.50	1282	4	2022	C	3.00	19710
4	2022	P	3.25	1264	4	2022	C	5.00	19478
3	2022	C	4.00	1126	2	2022	C	6.00	18855
4	2022	P	3.50	1124	3	2022	P	3.00	18782
5	2022	P	3.00	1100	2	2022	P	3.50	17344
5	2022	C	3.90	1000	3	2022	C	7.00	16546
10	2022	C	4.00	1000	3	2022	P	4.00	16332
2	2022	C	5.50	993	5	2022	C	5.00	16298
3	2022	C	5.00	953	3	2022	P	3.50	16239
2	2022	C	6.00	851	6	2022	C	5.00	16167
5	2022	P	2.75	825	2	2022	P	4.00	16023
2	2022	C	4.20	819	4	2022	P	2.50	16008
2	2022	C	4.75	795	2	2022	C	4.50	15770
3	2022	P	3.50	704	2	2022	C	5.50	15479
2	2022	C	4.10	702	10	2022	C	5.00	15463
2	2022	C	5.00	670	10	2022	C	6.00	15055
5	2022	P	2.50	600	3	2022	P	2.00	14936
3	2022	P	3.00	592	2	2022	C	4.25	14531
9	2022	C	5.00	577	2	2022	C	10.00	14427
7	2022	C	5.00	563	5	2022	P	3.00	14285
6	2022	C	5.00	550	3	2022	P	2.25	14102
6	2022	P	3.00	550	2	2022	P	3.00	13971
7	2022	P	3.00	550	10	2022	P	2.00	13921
8	2022	C	5.00	550	5	2022	C	3.00	13733
8	2022	P	3.00	550	4	2022	C	4.00	13726
9	2022	P	3.00	550	8	2022	C	5.00	13643
10	2022	C	5.00	550	3	2022	C	4.50	13568
10	2022	P	3.00	550	3	2022	P	5.00	13560
3	2022	C	4.20	531	6	2022	C	3.00	13438
4	2022	P	2.50	506	4	2022	P	3.00	13370
3	2022	P	3.30	503	12	2022	C	4.50	13282
2	2022	C	7.50	495	3	2022	C	3.00	13280
4	2022	C	5.00	484	3	2022	C	3.50	13274
3	2022	C	6.00	443	7	2022	C	3.00	13230
2	2022	P	3.75	412	8	2022	C	3.00	13226
2	2022	C	3.90	380	9	2022	C	3.00	13225
6	2022	C	4.50	350	10	2022	C	3.00	13114
7	2022	C	4.50	350	12	2022	C	5.25	13113
8	2022	C	4.50	350	2	2022	C	8.00	12494
9	2022	C	4.50	350	5	2022	P	2.50	12398
					2	2022	P	2.5	12397

Source: CME, ICE

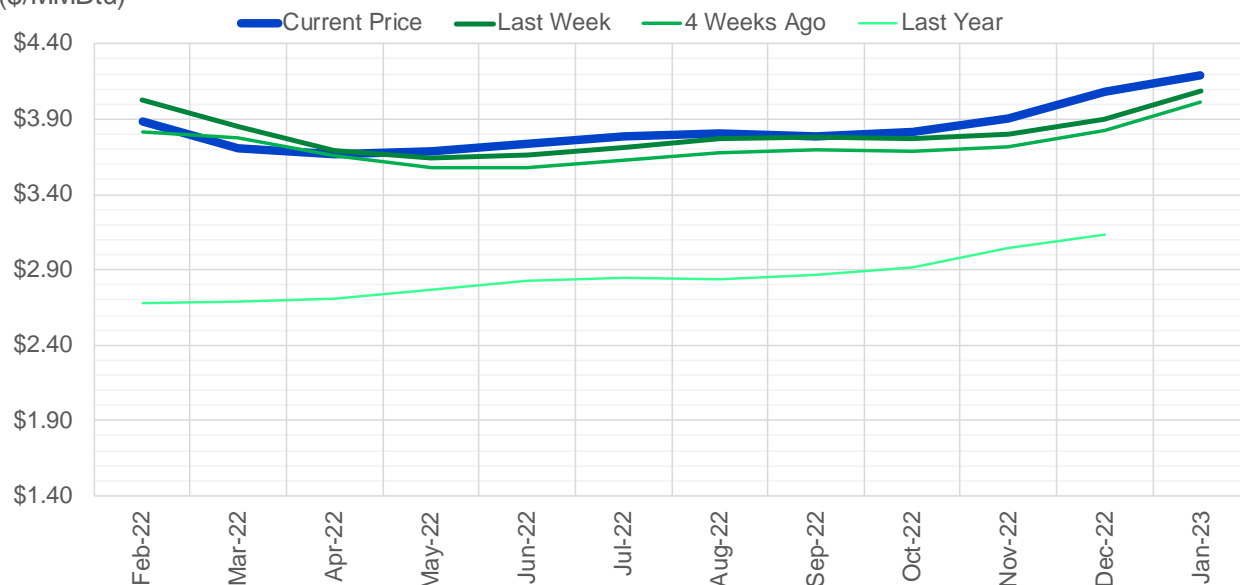
Nat Gas Futures Open Interest CME and ICE Combined

CME Henry Hub Futures (10,000 MMBtu)				ICE Henry Hub Futures Contract Equivalent (10,000 MM			
	Current	Prior	Daily Change		Current	Prior	Daily Change
FEB 22	108616	114957	-6341	FEB 22	78438	79997	-1559
MAR 22	263061	261106	1955	MAR 22	86276	86840	-564
APR 22	84786	82901	1885	APR 22	75234	76537	-1303
MAY 22	113716	115220	-1504	MAY 22	66680	66849	-168
JUN 22	55253	54571	682	JUN 22	53655	53565	90
JUL 22	47259	47125	134	JUL 22	58965	58952	13
AUG 22	35157	34449	708	AUG 22	55150	55273	-123
SEP 22	48824	48730	94	SEP 22	56301	56401	-101
OCT 22	77051	76690	361	OCT 22	62795	62954	-159
NOV 22	35461	35145	316	NOV 22	51000	51221	-221
DEC 22	36635	36791	-156	DEC 22	60399	60711	-312
JAN 23	42151	42400	-249	JAN 23	48272	48334	-62
FEB 23	12616	12703	-87	FEB 23	36935	36916	19
MAR 23	27492	27696	-204	MAR 23	41426	41354	71
APR 23	21465	21376	89	APR 23	40981	40910	72
MAY 23	13371	13290	81	MAY 23	36378	36336	42
JUN 23	10251	10138	113	JUN 23	33213	33155	58
JUL 23	8256	8116	140	JUL 23	32354	32323	30
AUG 23	5408	5257	151	AUG 23	33217	33191	26
SEP 23	8292	8055	237	SEP 23	31868	31834	34
OCT 23	13344	13199	145	OCT 23	36033	36027	6
NOV 23	7067	7108	-41	NOV 23	35559	35569	-10
DEC 23	9743	9532	211	DEC 23	33403	33407	-4
JAN 24	6696	6693	3	JAN 24	23723	23692	32
FEB 24	1742	1742	0	FEB 24	16865	16786	79
MAR 24	9702	9702	0	MAR 24	22795	22713	82
APR 24	5234	5234	0	APR 24	16095	16034	62
MAY 24	2055	2055	0	MAY 24	16432	16393	39
JUN 24	931	931	0	JUN 24	16549	16546	3
JUL 24	563	563	0	JUL 24	17145	17143	2



(\$/MMBtu)

Nat Gas Term Structure



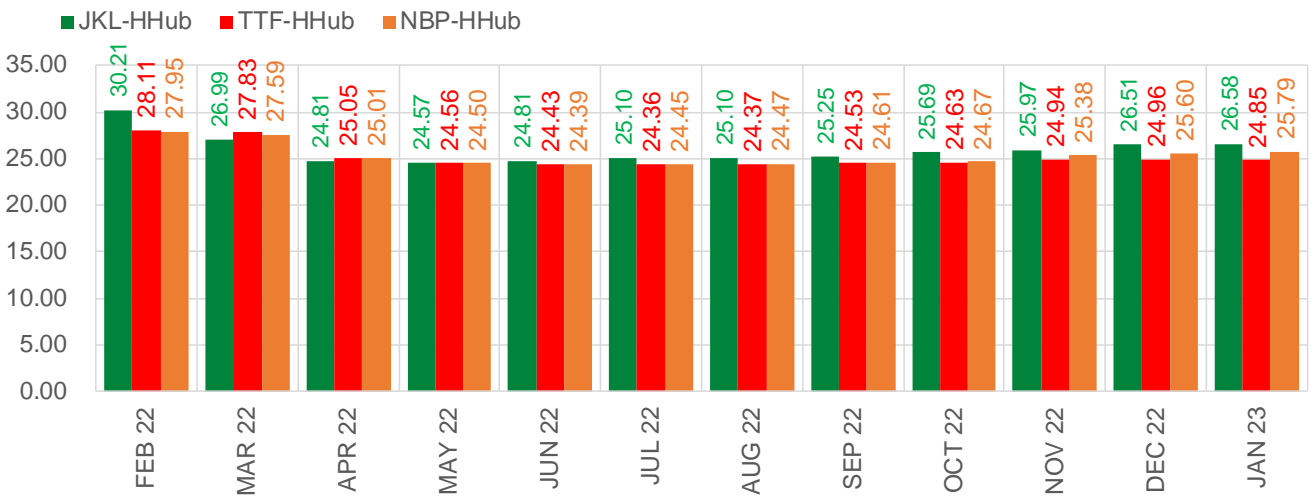
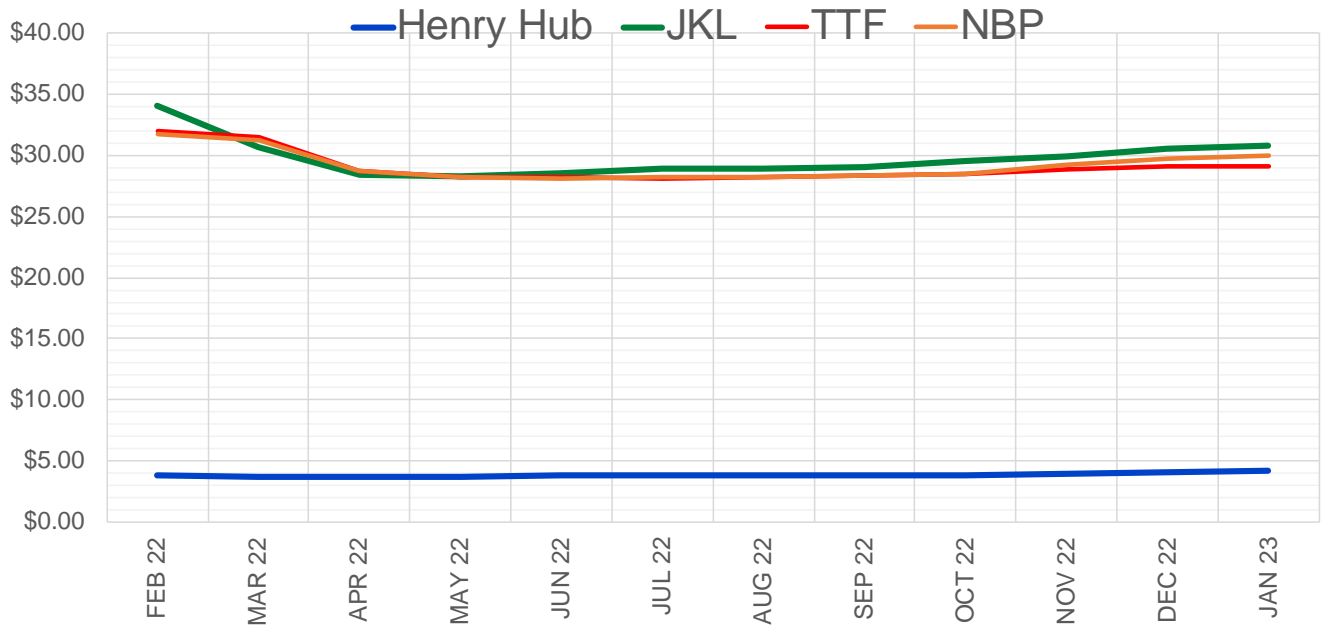
	Feb-22	Mar-22	Apr-22	May-22	Jun-22	Jul-22	Aug-22	Sep-22	Oct-22	Nov-22	Dec-22	Jan-23
Current Price	\$3.882	\$3.710	\$3.666	\$3.683	\$3.733	\$3.789	\$3.804	\$3.789	\$3.818	\$3.909	\$4.086	\$4.193
Last Week	\$4.024	\$3.850	\$3.696	\$3.645	\$3.667	\$3.716	\$3.770	\$3.785	\$3.772	\$3.801	\$3.902	\$4.088
vs. Last Week	-\$0.142	-\$0.140	-\$0.030	\$0.038	\$0.066	\$0.073	\$0.034	\$0.004	\$0.046	\$0.108	\$0.184	\$0.105
4 Weeks Ago	\$3.815	\$3.774	\$3.658	\$3.575	\$3.583	\$3.628	\$3.680	\$3.695	\$3.684	\$3.721	\$3.823	\$4.015
vs. 4 Weeks Ago	\$0.067	-\$0.064	\$0.008	\$0.108	\$0.150	\$0.161	\$0.124	\$0.094	\$0.134	\$0.188	\$0.263	\$0.178
Last Year	\$2.716	\$2.684	\$2.690	\$2.711	\$2.764	\$2.830	\$2.851	\$2.840	\$2.863	\$2.920	\$3.042	\$3.132
vs. Last Year	\$1.166	\$1.026	\$0.976	\$0.972	\$0.969	\$0.959	\$0.953	\$0.949	\$0.955	\$0.989	\$1.044	\$1.061

	Units	Cash Settled	Prompt Settle	Cash to Prompt
AGT Citygate	\$/MMBtu	13.20	18.36	5.16
TETCO M3	\$/MMBtu	14.29	5.54	-8.75
FGT Zone 3	\$/MMBtu	15.90	3.73	-12.17
Zone 6 NY	\$/MMBtu	15.90	7.85	-8.05
Chicago Citygate	\$/MMBtu	3.95	4.24	0.29
Michcon	\$/MMBtu	3.68	3.48	-0.21
Columbia TCO Pool	\$/MMBtu	3.58	3.07	-0.51
Ventura	\$/MMBtu	3.93	5.26	1.33
Rockies/Opal	\$/MMBtu	4.87	4.17	-0.70
El Paso Permian Basin	\$/MMBtu	3.63	3.73	0.10
Socal Citygate	\$/MMBtu	5.65	5.32	-0.33
Malin	\$/MMBtu	5.05	4.96	-0.09
Houston Ship Channel	\$/MMBtu	3.73	3.68	-0.05
Henry Hub Cash	\$/MMBtu	3.93	3.50	-0.44
AECO Cash	C\$/GJ	3.89	3.21	-0.68
Station2 Cash	C\$/GJ	3.55	5.23	1.68
Dawn Cash	C\$/GJ	3.86	3.73	-0.13

Source: CME, Bloomberg

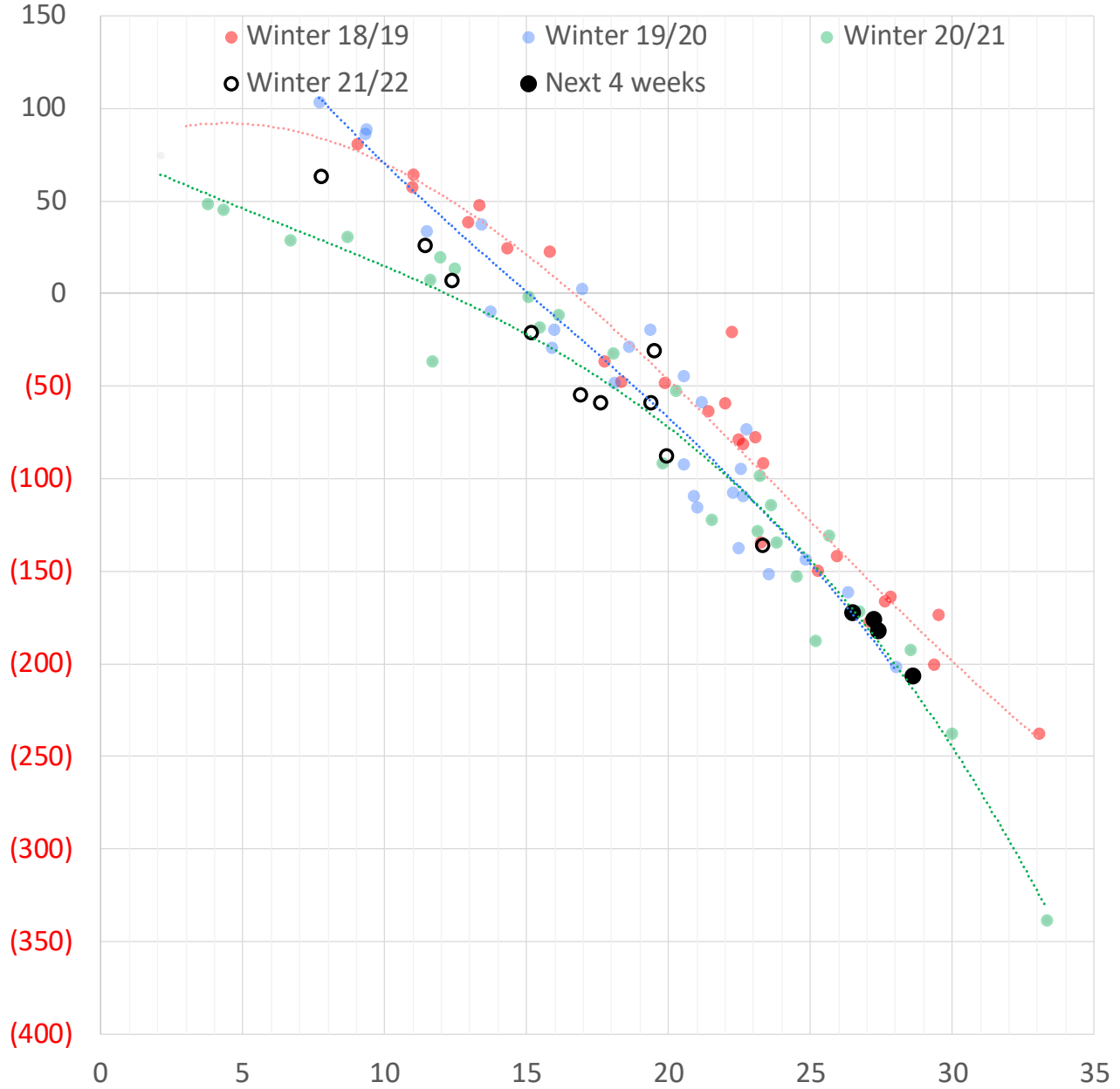
	Units	Current Price	vs. Last Week	vs. 4 Weeks Ago	vs. Last Year
NatGas Jul21/Oct21	\$/MMBtu	2.224	▲ 0.000	▲ 0.000	▲ 2.195
NatGas Oct21/Nov21	\$/MMBtu	0.361	▲ 0.000	▲ 0.000	▲ 0.303
NatGas Oct21/Jan22	\$/MMBtu	-1.817	▲ 0.000	▲ 0.210	▼ -2.088
NatGas Apr22/Oct22	\$/MMBtu	0.156	▼ -0.027	▼ -0.001	▲ 0.139
WTI Crude	\$/Bbl	79.46	▲ 2.470	▲ 8.520	▲ 28.630
Brent Crude	\$/Bbl	81.99	▲ 2.670	▲ 7.570	▲ 27.610
Fuel Oil, NY Harbour 1%	\$/Bbl	97.18	▲ 0.000	▲ 0.000	▲ 0.000
Heating Oil	cents/Gallon	247.77	▲ 8.180	▲ 22.740	▲ 93.960
Propane, Mt. Bel	cents/Gallon	1.10	▲ 0.066	▲ 0.091	▲ 0.269
Ethane, Mt. Bel	cents/Gallon	0.36	▲ 0.021	▲ 0.019	▲ 0.125
Coal, PRB	\$/MTon	12.30	▲ 0.000	▲ 0.000	▲ 0.000
Coal, PRB	\$/MMBtu	0.70			
Coal, ILB	\$/MTon	31.05	▲ 0.000	▲ 0.000	▲ 0.000
Coal, ILB	\$/MMBtu	1.32			

Nat Gas Term Structure (\$MMBTU)



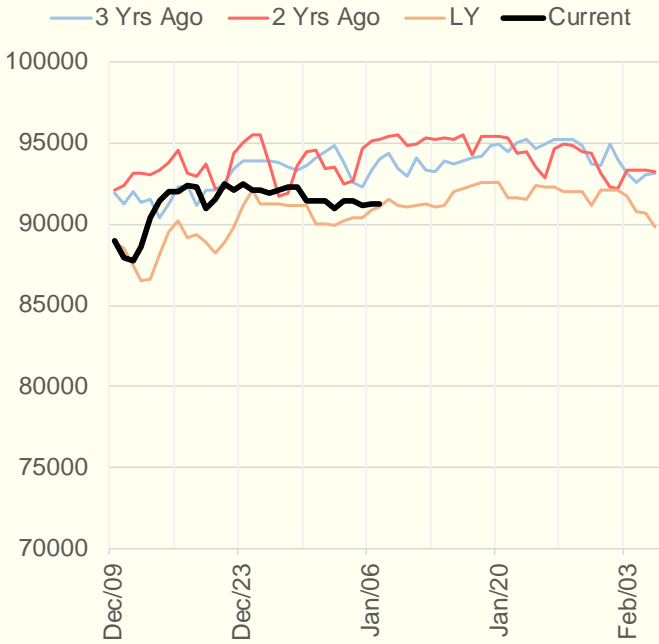
	FEB 22	MAR 22	APR 22	MAY 22	JUN 22	JUL 22	AUG 22	SEP 22	OCT 22	NOV 22	DEC 22	JAN 23
Henry Hub	\$3.858	\$3.722	\$3.675	\$3.695	\$3.749	\$3.801	\$3.819	\$3.804	\$3.832	\$3.930	\$4.109	\$4.214
JKL	\$34.070	\$30.715	\$28.480	\$28.260	\$28.555	\$28.900	\$28.920	\$29.050	\$29.520	\$29.895	\$30.620	\$30.790
JKL-HHub	\$30.212	\$26.993	\$24.805	\$24.565	\$24.806	\$25.099	\$25.101	\$25.246	\$25.688	\$25.965	\$26.511	\$26.576
TTF	\$31.971	\$31.549	\$28.720	\$28.257	\$28.182	\$28.157	\$28.190	\$28.337	\$28.458	\$28.865	\$29.070	\$29.067
TTF-HHub	\$28.113	\$27.827	\$25.045	\$24.562	\$24.433	\$24.356	\$24.371	\$24.533	\$24.626	\$24.935	\$24.961	\$24.853
NBP	\$31.803	\$31.316	\$28.688	\$28.196	\$28.134	\$28.248	\$28.287	\$28.415	\$28.503	\$29.308	\$29.708	\$30.008
NBP-HHub	\$27.945	\$27.594	\$25.013	\$24.501	\$24.385	\$24.447	\$24.468	\$24.611	\$24.671	\$25.378	\$25.599	\$25.794

Weather Storage Model - Next 4 Week Forecast

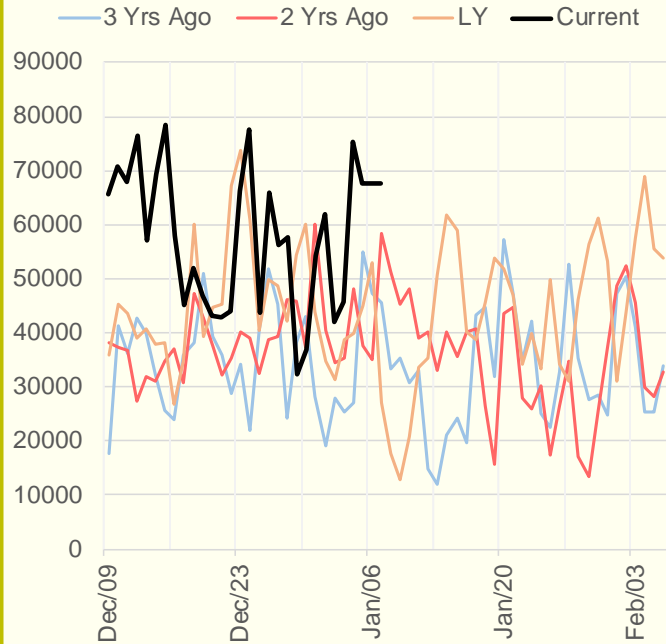


The risk of trading futures and options and other derivatives involves a substantial risk of loss and is not suitable for all persons. Each person must consider whether a particular trade, combination of trades, or strategy is suitable for that person's financial means and objectives. Past results are not necessarily indicative of future results. This communication may contain links to third party websites which are not under the control of and are not maintained by ION Energy Group, and ION Energy Group is not responsible for their content.

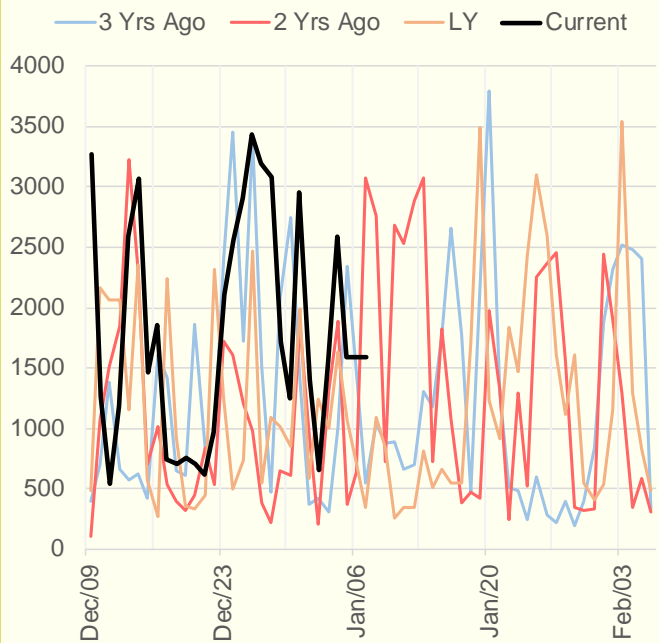
NRC Nuclear Daily Output



US Wind



CALI Wind



TEXAS Wind

