

# CFTC COMMITMENT OF TRADERS REPORT

As of 1/4/2022

## TRADITIONAL FUNDS net position changes

Wed to Tue, in 000 contracts

	Corn	Bean	Meal	Oil	Chi. Wheat	KC Wheat	Min Wheat
Futures Only	(12.7)	5.3	7.3	9.1	(1.9)	(7.6)	(2.7)
Futures & Options Combined	(10.5)	5.3	6.1	10.2	(5.2)	(8.6)	(2.7)

## TRADITIONAL COMMERCIAL net position changes

	Corn	Bean	Meal	Oil	Chi. Wheat	KC Wheat	Min Wheat
Futures Only	29.0	1.2	(9.3)	(11.3)	4.7	5.8	4.0
Futures & Options Combined	26.4	0.8	(7.6)	(12.4)	7.9	6.6	4.0

## MANAGED MONEY net position changes

	Corn	Bean	Meal	Oil	Chi. Wheat	KC Wheat	Min Wheat
Futures Only	(7.2)	1.2	9.6	7.3	(8.5)	(7.4)	(2.5)
Futures & Options Combined	(7.4)	0.8	9.6	7.8	(8.1)	(7.6)	(2.5)

## SWAP DEALERS net position changes

	Corn	Bean	Meal	Oil	Chi. Wheat	KC Wheat	Min Wheat
Futures Only	2.0	7.0	(0.0)	(2.7)	3.0	(0.9)	0.7
Futures & Options Combined	0.9	5.3	0.1	(2.9)	3.9	(0.8)	0.5

## PRODUCERS/END USERS net position changes

	Corn	Bean	Meal	Oil	Chi. Wheat	KC Wheat	Min Wheat
Futures Only	27.0	(5.8)	(9.2)	(8.7)	1.7	6.7	3.2
Futures & Options Combined	25.5	(4.5)	(7.7)	(9.5)	4.0	7.4	3.5

## INDEX net position changes

	Corn	Bean	Meal	Oil	Chi. Wheat	KC Wheat	Min Wheat
Futures & Options Combined	4.6	3.8	1.4	2.7	3.2	(2.1)	NA

## SUPPLEMENTAL NON-COMMERCIAL net position changes

	Corn	Bean	Meal	Oil	Chi. Wheat	KC Wheat	Min Wheat
Futures & Options Combined	(13.8)	5.1	5.2	7.4	(5.6)	(8.2)	NA

## OPEN INTEREST net position changes

Wed to Tue, in 000 contracts

	Corn	Bean	Meal	Oil	Chi. Wheat	KC Wheat	Min Wheat
Futures Only	(2.5)	0.9	1.1	(0.7)	2.7	2.2	(0.4)
Futures & Options Combined	22.6	21.9	6.0	2.9	5.8	2.5	(0.4)

Source: CFTC and FI

Wed to Tue, in 000 contracts

**COMMITMENT OF TRADERS  
FUTURES ONLY NET POSITIONS  
AS OF 01/04/2022  
(IN THOUSAND CONTRACTS)**

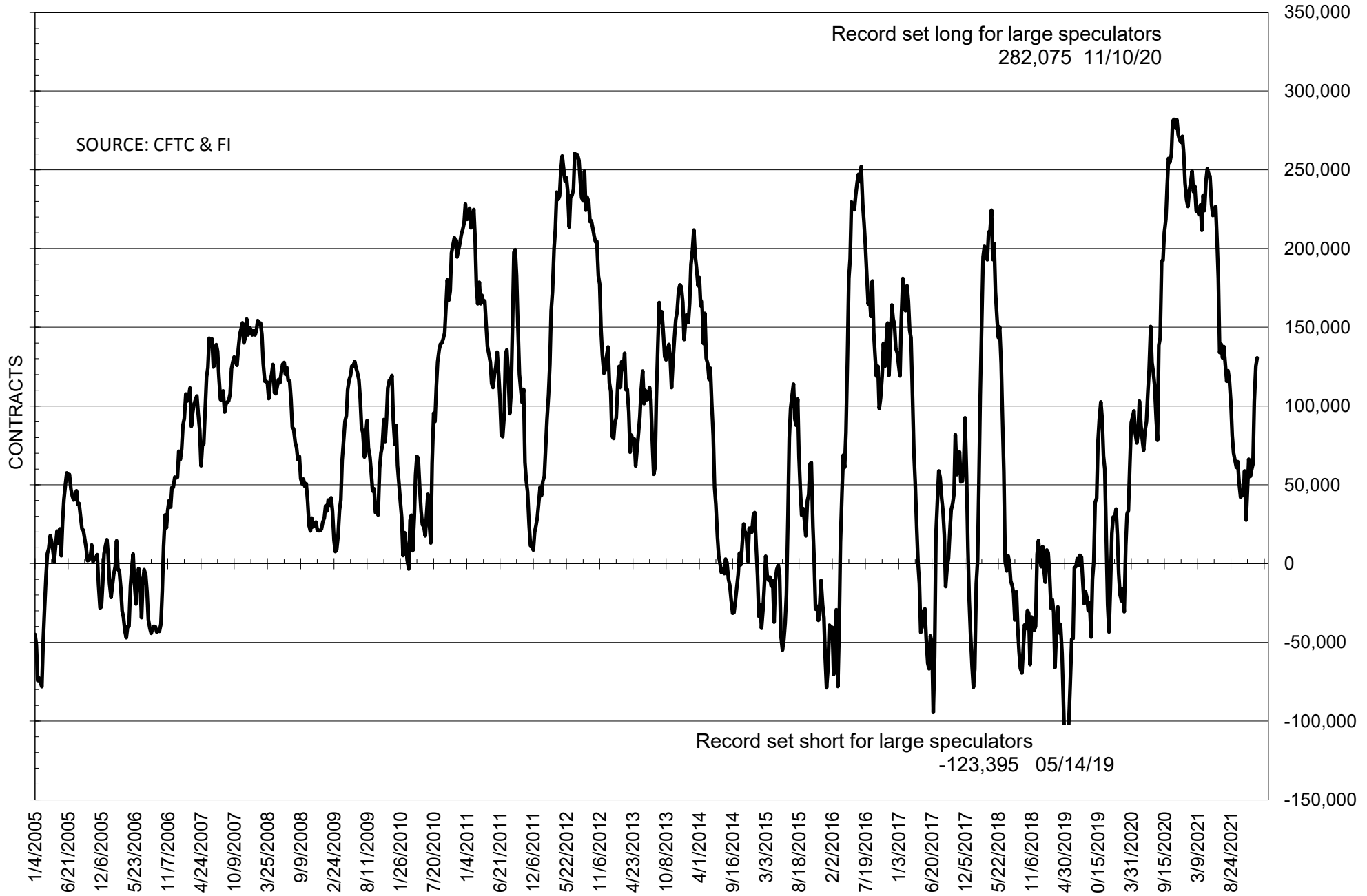
	COMMERCIAL				(FUND) NON COMMERCIAL				(SPEC) NON-REPORTABLE			
	4-Jan	28-Dec	21-Dec	14-Dec	4-Jan	28-Dec	21-Dec	14-Dec	4-Jan	28-Dec	21-Dec	14-Dec
<b>WHEAT</b>												
Chicago	6.2	1.6	-1.6	-5.2	4.1	5.9	9.1	12.0	-10.3	-7.5	-7.5	-6.8
Kansas City	-48.0	-53.8	-52.9	-48.8	45.0	52.6	50.1	45.8	3.0	1.3	2.8	2.9
Minneapolis	-20.1	-24.1	-27.0	-27.2	17.7	20.4	22.0	22.5	2.5	3.7	5.0	4.8
All Wheat	-61.9	-76.4	-81.5	-81.2	66.8	78.9	81.3	80.3	-4.8	-2.5	0.2	0.9
<b>CORN</b>	-382.8	-411.8	-401.3	-381.9	445.5	458.2	445.3	426.6	-62.7	-46.4	-44.0	-44.7
OATS	#VALUE!	-0.1	0.1	-0.2	#VALUE!	0.7	0.7	0.7	#VALUE!	-0.6	-0.8	-0.5
<b>SOYBEANS</b>	-91.9	-93.1	-72.4	-27.2	130.6	125.3	102.9	63.2	-38.7	-32.2	-30.5	-36.1
SOY OIL	-55.8	-44.5	-39.3	-44.3	49.7	40.6	40.4	43.2	6.1	3.9	-1.1	1.2
SOY MEAL	-123.4	-114.1	-101.5	-93.9	99.0	91.7	80.1	71.4	24.4	22.4	21.3	22.4

Oats positions thin to be reported

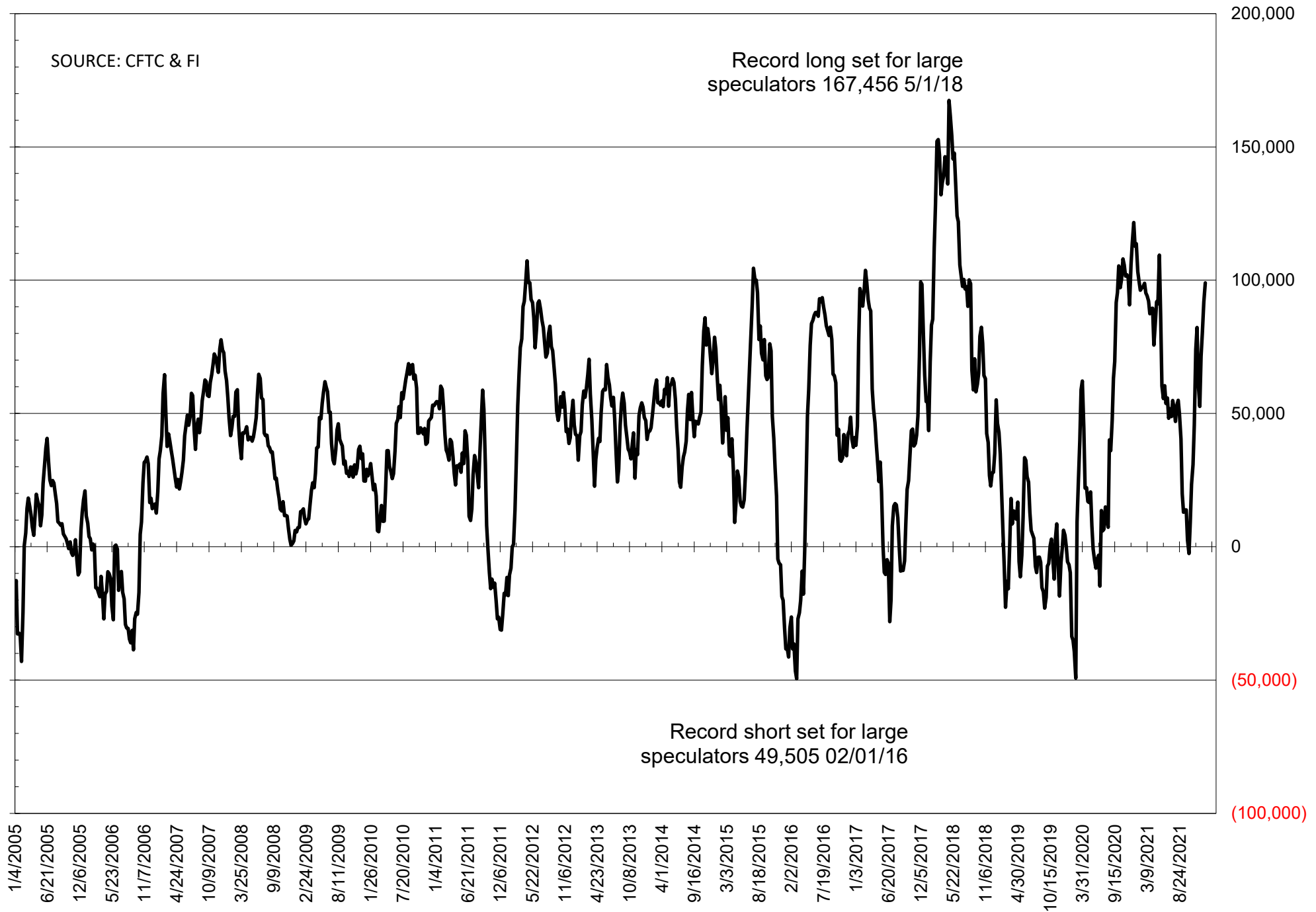
	TOTAL OPEN INTEREST				NEARBY FUTURES PRICE					4-Jan-22 LAST REPORTED % HELD BY TRADERS			
	4-Jan	28-Dec	21-Dec	14-Dec	H Latest	H 4-Jan	F/H 28-Dec	F/H 21-Dec	F/H 14-Dec	LARGE FUND		SMALL	
										LONG	SHORT	LONG	SHORT
<b>WHEAT</b>													
Chicago	359139	356439	357381	361469	758.50	770.00	783.50	799.00	787.00	0%	27%	0%	11%
Kansas City	222583	220413	216719	215046	775.00	804.00	821.75	841.50	811.75	0%	16%	0%	10%
Minneapolis	73366	73766	74243	74886	923.25	970.50	1002.50	1025.50	1017.00	0%	8%	0%	15%
<b>CORN</b>	1520233	1522692	1485412	1459289	606.75	609.50	604.75	598.25	590.25	0%	5%	0%	13%
OATS	#VALUE!	4383	4532	4854	668.25	692.00	702.50	666.75	715.00	0%	#VALUE!	0%	#VALUE!
<b>SOYBEANS</b>	648148	647225	654460	647243	1410.25	1389.75	1359.25	1308.00	1264.50	27%	7%	7%	13%
SOY OIL	379609	380321	406225	405768	58.78	58.33	56.55	53.90	52.24	0%	12%	0%	6%
SOY MEAL	389727	388667	400752	389271	425.00	414.70	415.90	394.00	376.90	0%	5%	0%	5%

SOURCE: CFTC & FI

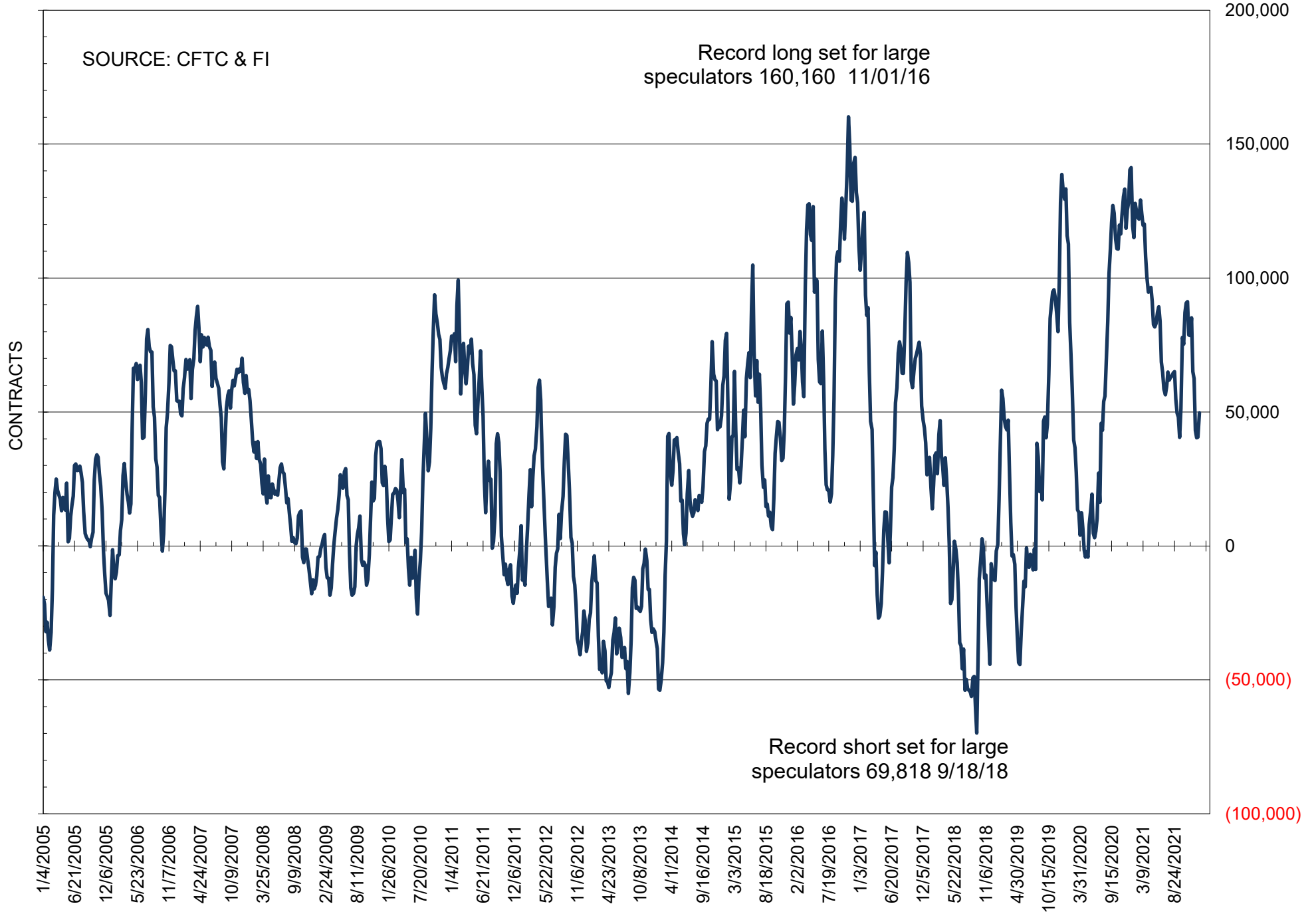
# NET POSITION OF FUTURES ONLY LARGE SPECS IN SOYBEANS



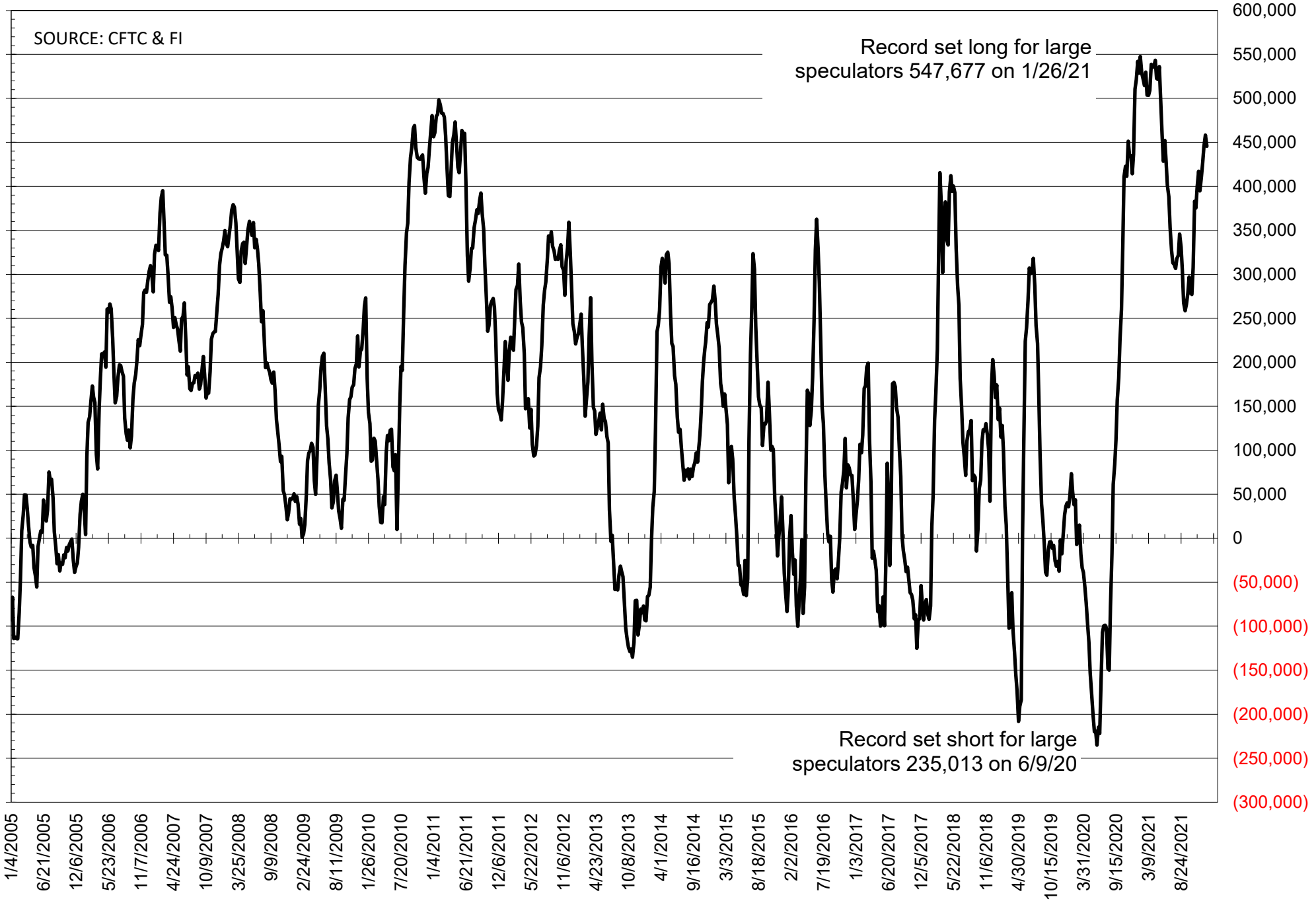
# NET POSITION OF FUTURES ONLY LARGE SPECS IN SOYMEAL



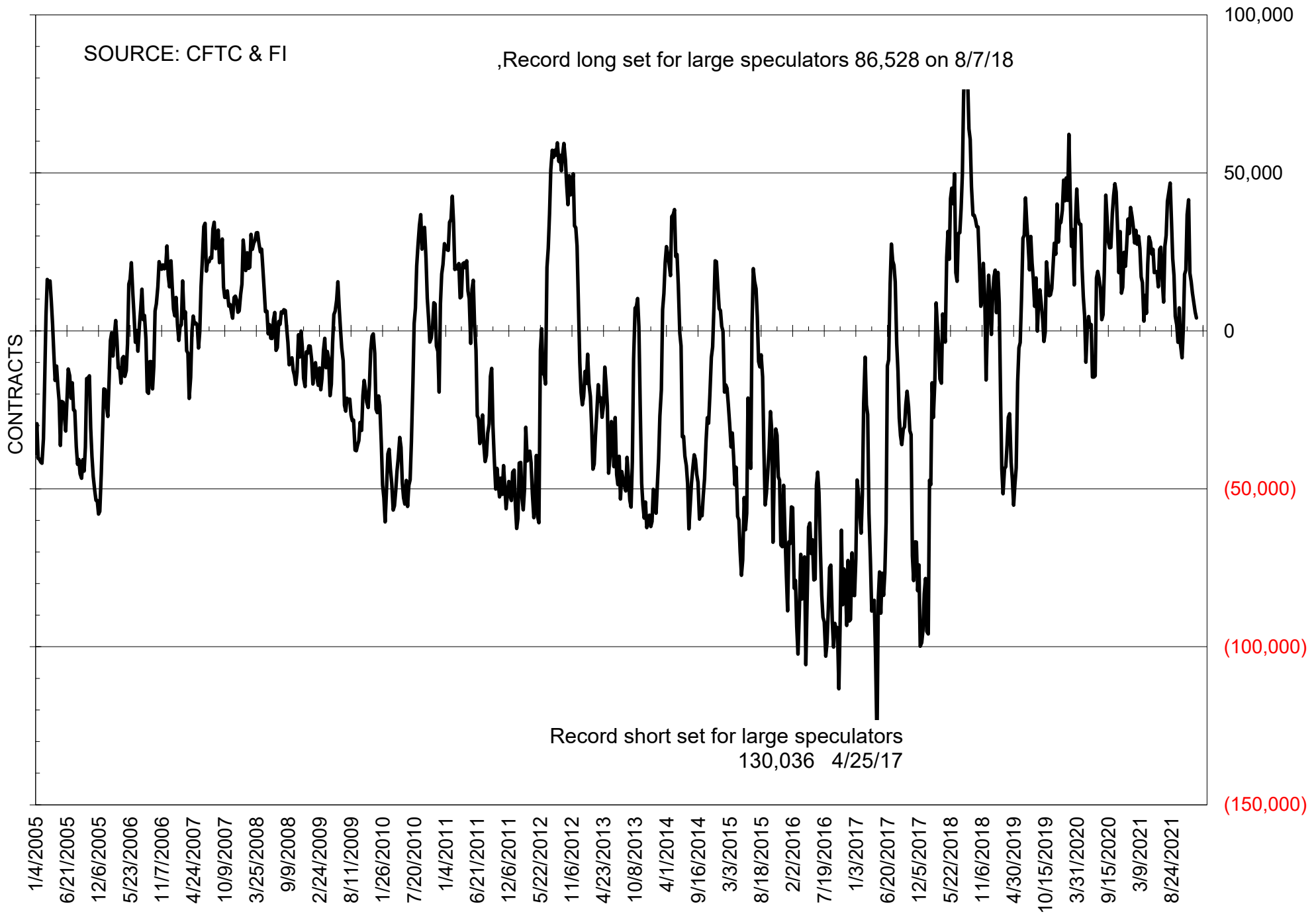
# NET POSITION OF FUTURES ONLY LARGE SPECS IN SOYOIL



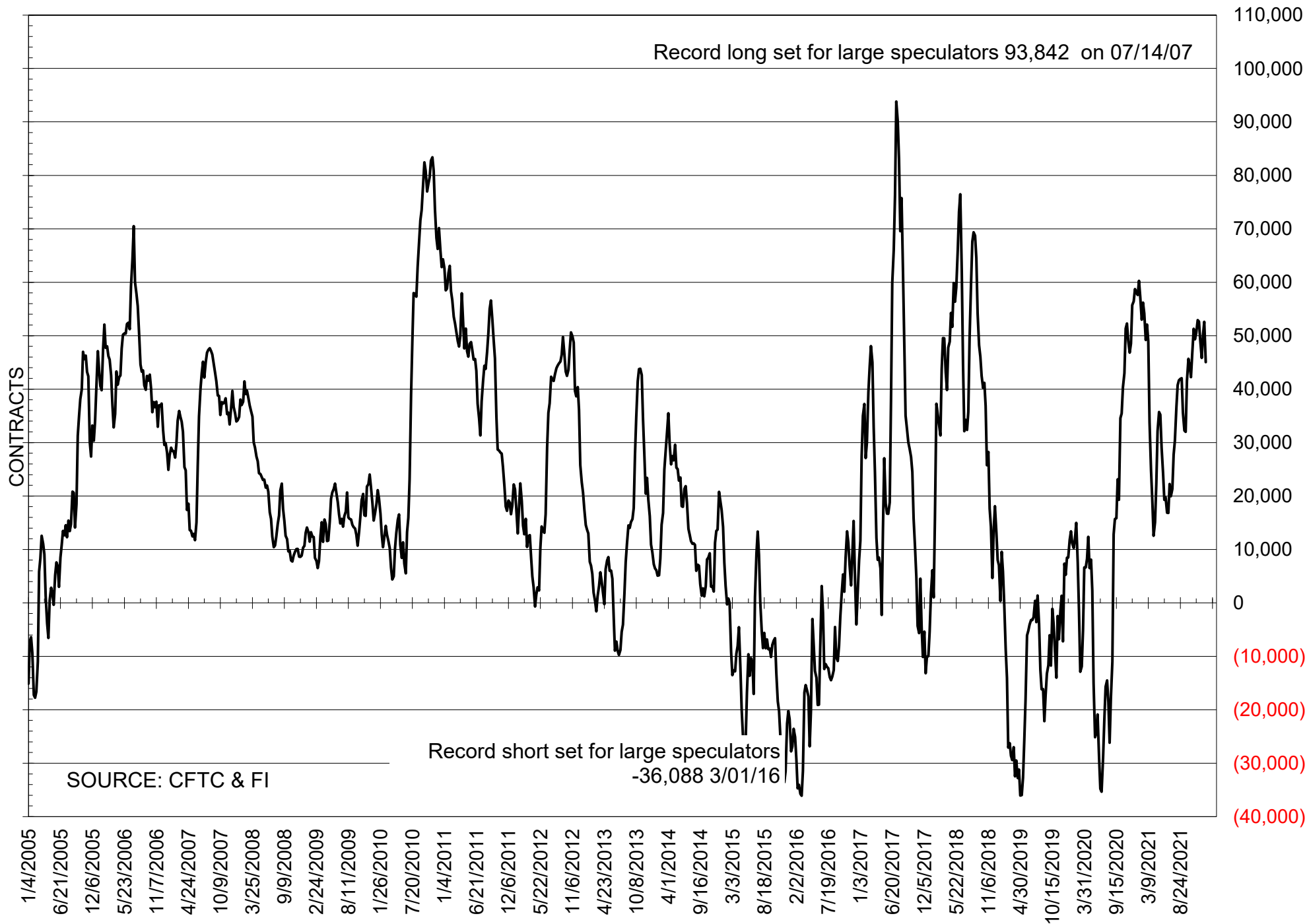
# NET POSITION OF LARGE SPECULATORS IN CORN



# NET POSITION OF FUTURES ONLY LARGE SPECS IN CHICAGO WHEAT

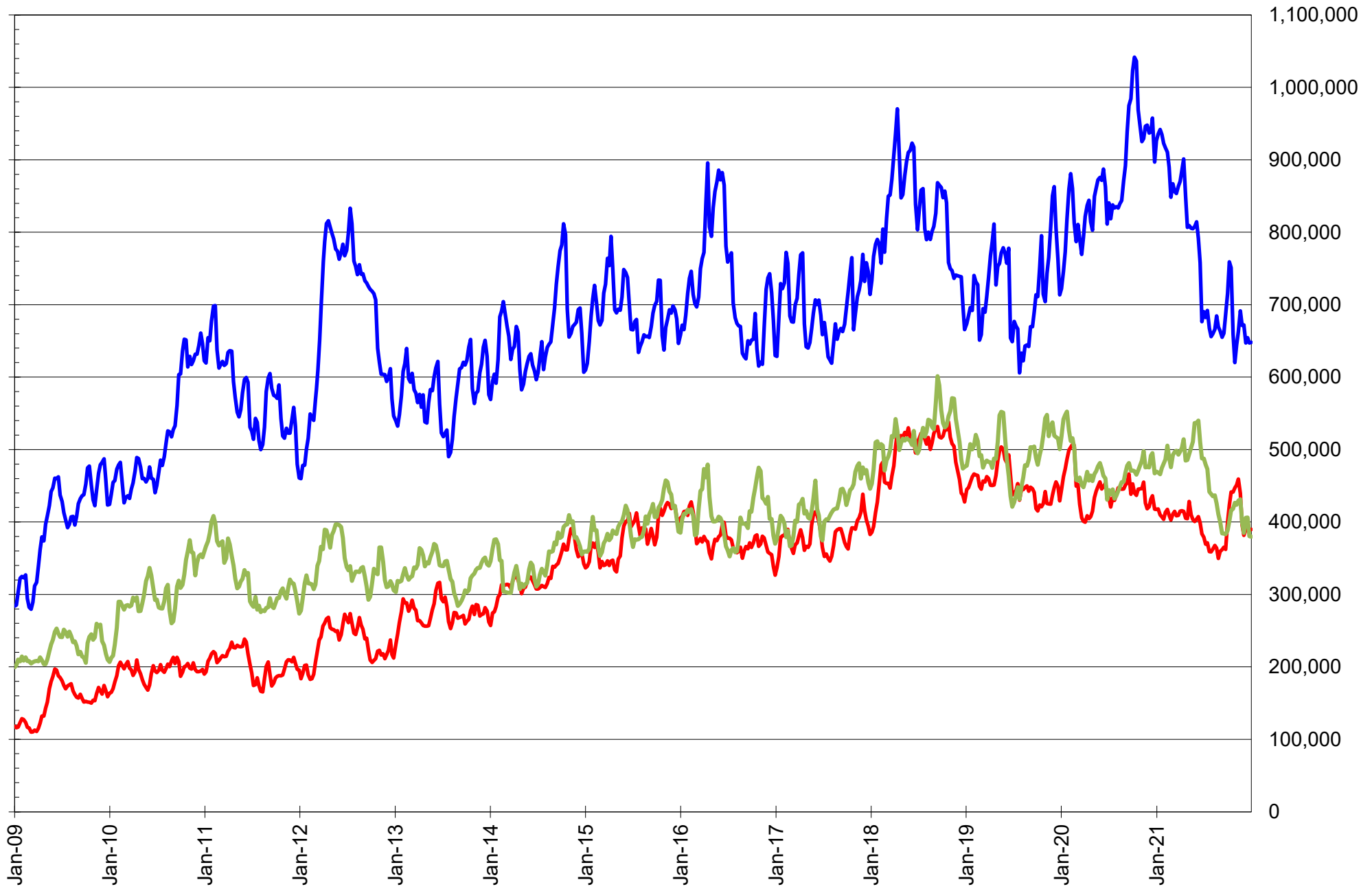


# NET POSITION OF LARGE SPECULATORS IN KANSAS CITY WHEAT





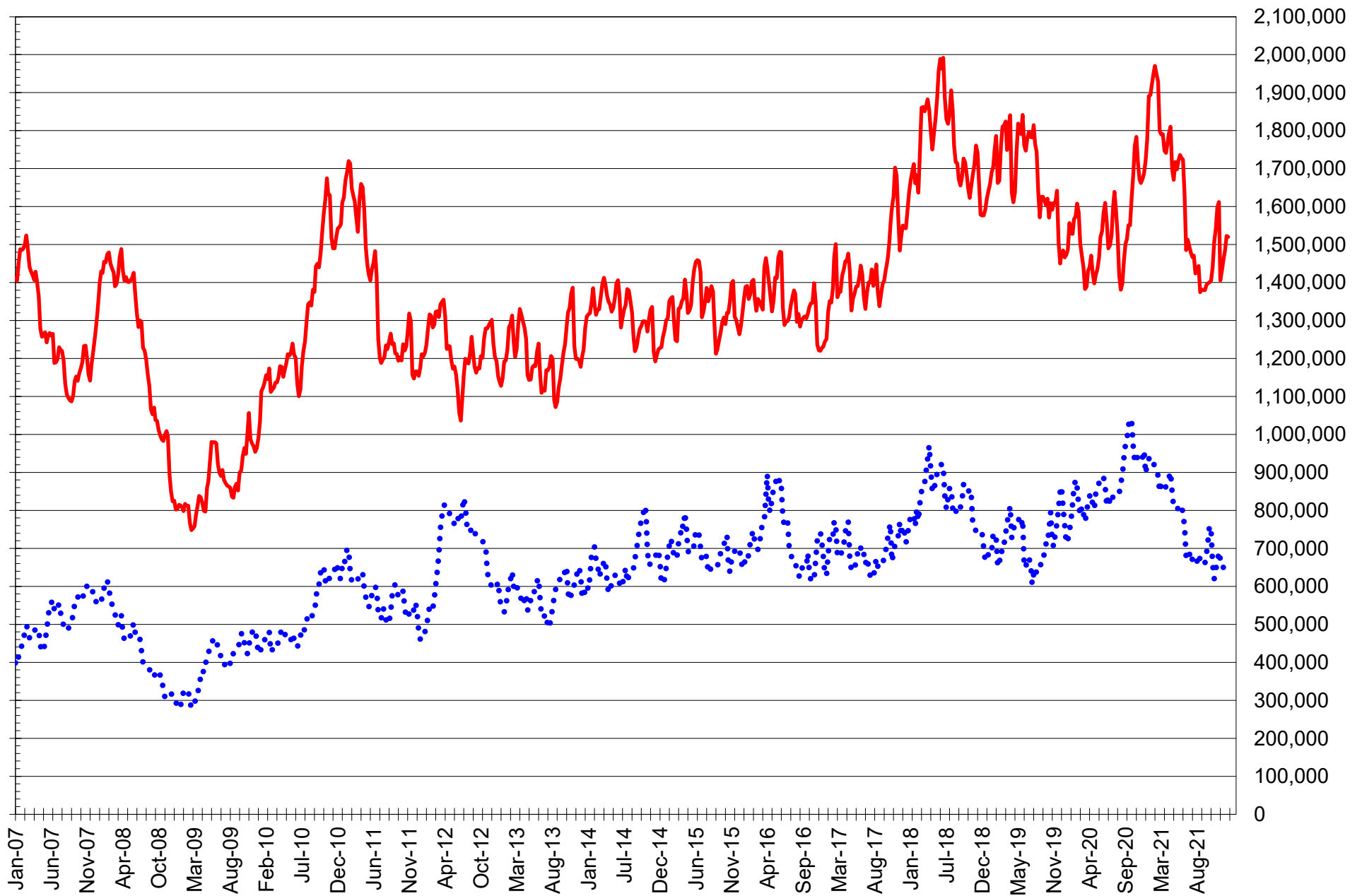
# TOTAL OPEN INTEREST IN SOYBEANS, MEAL AND OIL, FUTURES ONLY



SOURCE: CFTC & FI

— SOYBEANS — SOYBEAN MEAL — SOYBEAN OIL

# TOTAL OPEN INTEREST IN CORN AND SOYBEANS, FUTURES ONLY



SOURCE: CFTC & FI

— CORN

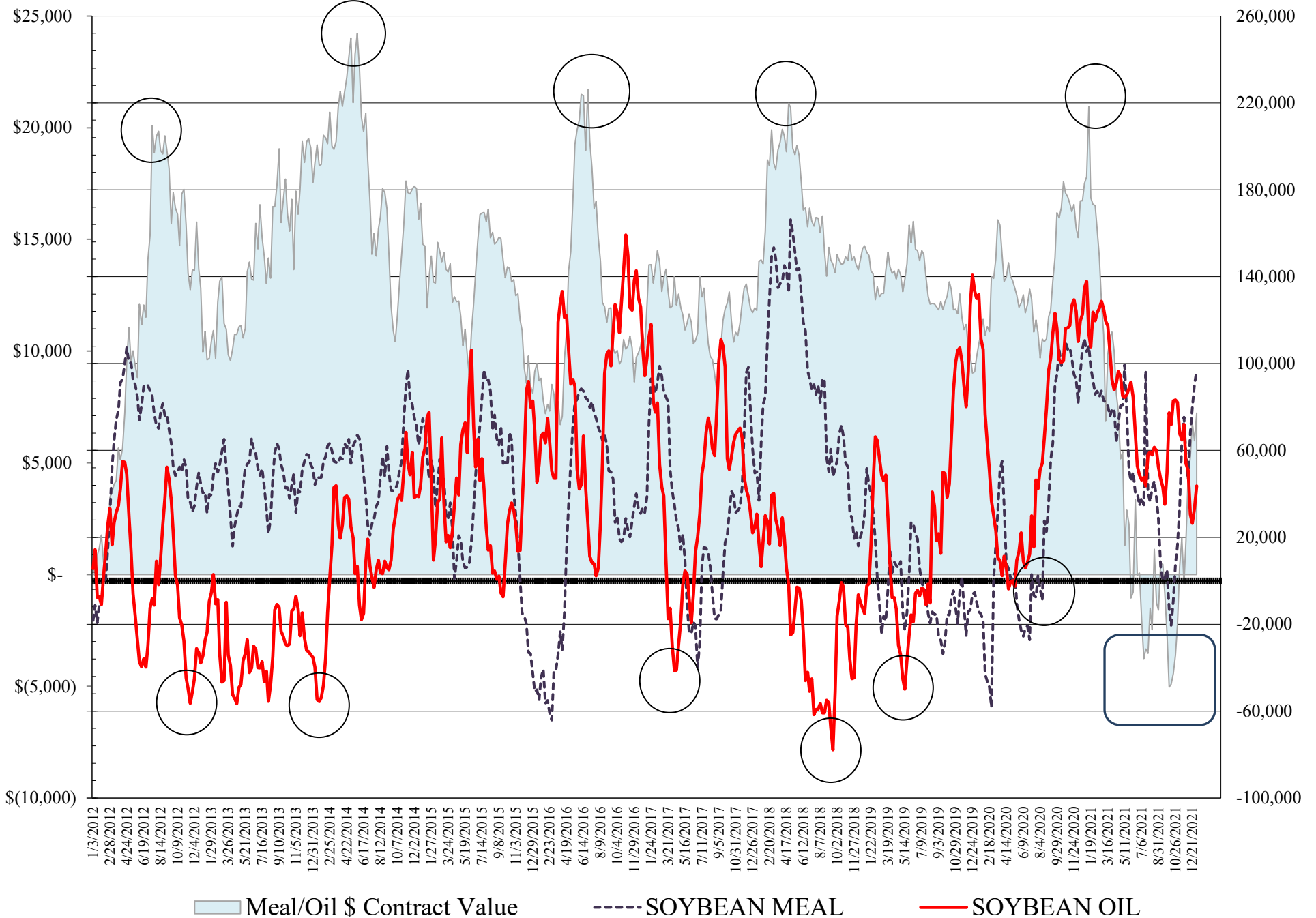
••••• SOYBEANS

**COMMITMENT OF TRADERS  
FUTURES & OPTIONS NET POSITIONS  
AS OF 01/04/2022  
(IN THOUSAND CONTRACTS)**

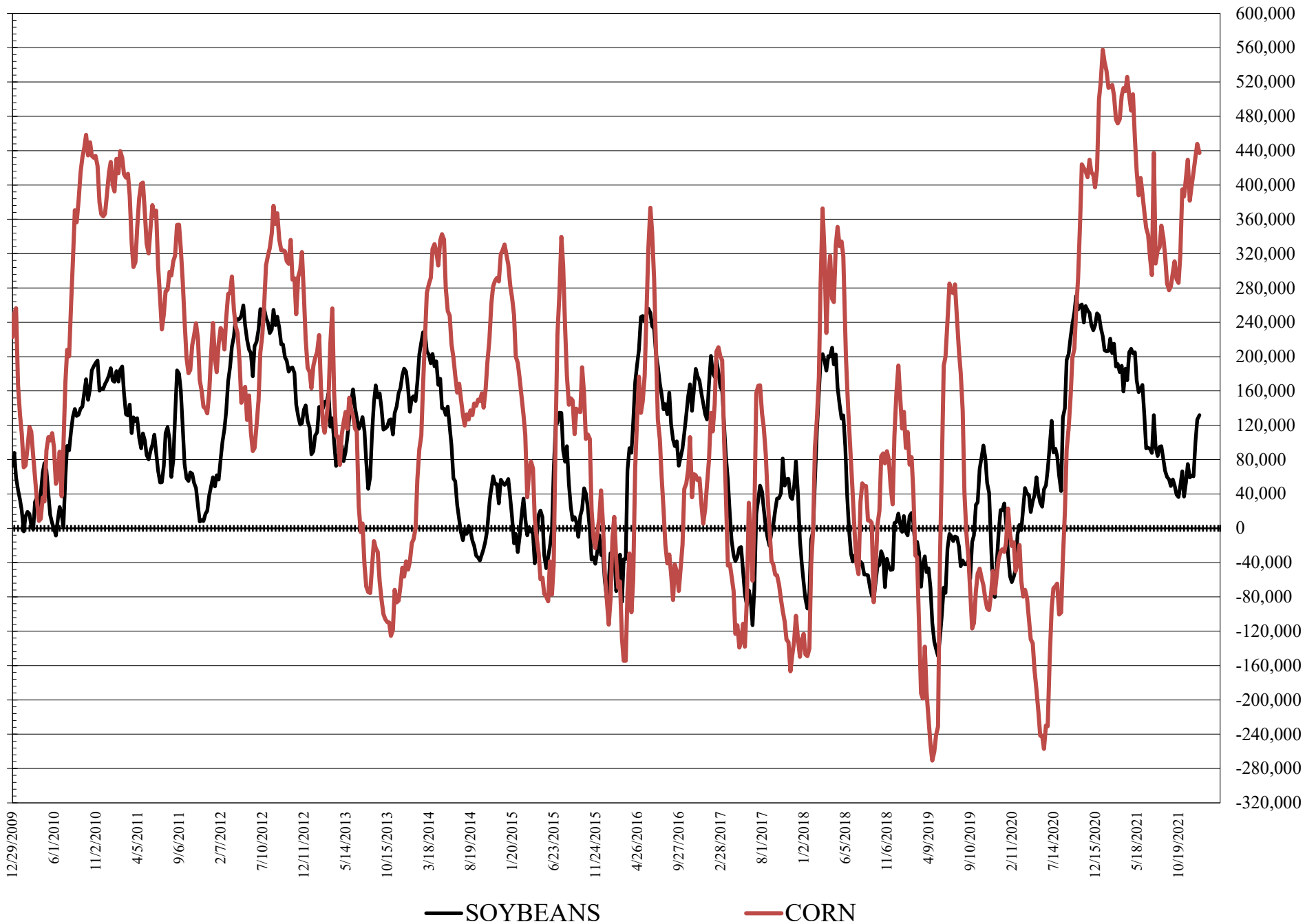
	COMMERCIAL				(FUND) NON COMMERCIAL				(SPEC) NON-REPORTABLE			
	4-Jan	28-Dec	21-Dec	14-Dec	4-Jan	28-Dec	21-Dec	14-Dec	4-Jan	28-Dec	21-Dec	14-Dec
<b>WHEAT</b>												
Chicago	15.0	7.0	5.8	3.3	-5.5	-0.4	0.8	2.4	-9.4	-6.7	-6.6	-5.8
Kansas City	-47.4	-54.0	-51.7	-48.3	44.0	52.6	48.6	45.2	3.5	1.4	3.1	3.2
Minneapolis	-19.0	-23.0	-26.0	-26.3	16.3	19.1	20.8	21.3	2.7	4.0	5.2	5.0
All Wheat	-51.5	-70.0	-71.9	-71.3	54.8	71.3	70.1	68.9	-3.3	-1.3	1.8	2.4
<b>CORN</b>	-387.7	-414.1	-400.0	-380.2	437.3	447.8	432.9	414.8	-49.6	-33.7	-32.9	-34.6
OATS	#VALUE!	-0.1	0.1	-0.2	#VALUE!	0.7	0.7	0.7	#VALUE!	-0.6	-0.8	-0.5
<b>SOYBEANS</b>	-92.7	-93.5	-69.6	-22.2	131.8	126.4	101.2	60.4	-39.1	-33.0	-31.6	-38.2
SOY OIL	-50.7	-38.3	-26.9	-33.1	43.6	33.4	26.5	30.6	7.1	4.9	0.4	2.5
SOY MEAL	-123.9	-116.3	-104.8	-94.1	96.7	90.5	79.7	68.2	27.3	25.8	25.2	25.9
		<b>TOTAL</b>										
		<b>OPEN INTEREST</b>				<b>COMMERCIALS</b>				<b>% HELD BY TRADERS</b>		
	4-Jan	28-Dec	21-Dec	14-Dec	LONG	SHORT			LONG	SHORT	LONG	SHORT
<b>WHEAT</b>												
Chicago	439,485	433,728	444,789	444,225	39%	35%	20%	22%	8%	10%		
Kansas City	247,064	244,520	247,544	239,385	32%	51%	33%	15%	11%	9%		
Minneapolis	77,161	77,597	78,648	79,137	45%	70%	29%	8%	18%	15%		
<b>CORN</b>	1,865,691	1,843,102	1,801,189	1,757,032	40%	61%	27%	4%	10%	13%		
OATS	#VALUE!	4,486	4,634	4,955								
<b>SOYBEANS</b>	789,340	767,439	789,405	767,185	48%	60%	22%	5%	7%	12%		
SOY OIL	422,697	419,844	456,215	451,435	52%	64%	21%	11%	8%	6%		
SOY MEAL	436,279	430,303	452,464	434,693	44%	72%	27%	4%	12%	6%		

SOURCE: CFTC & FI

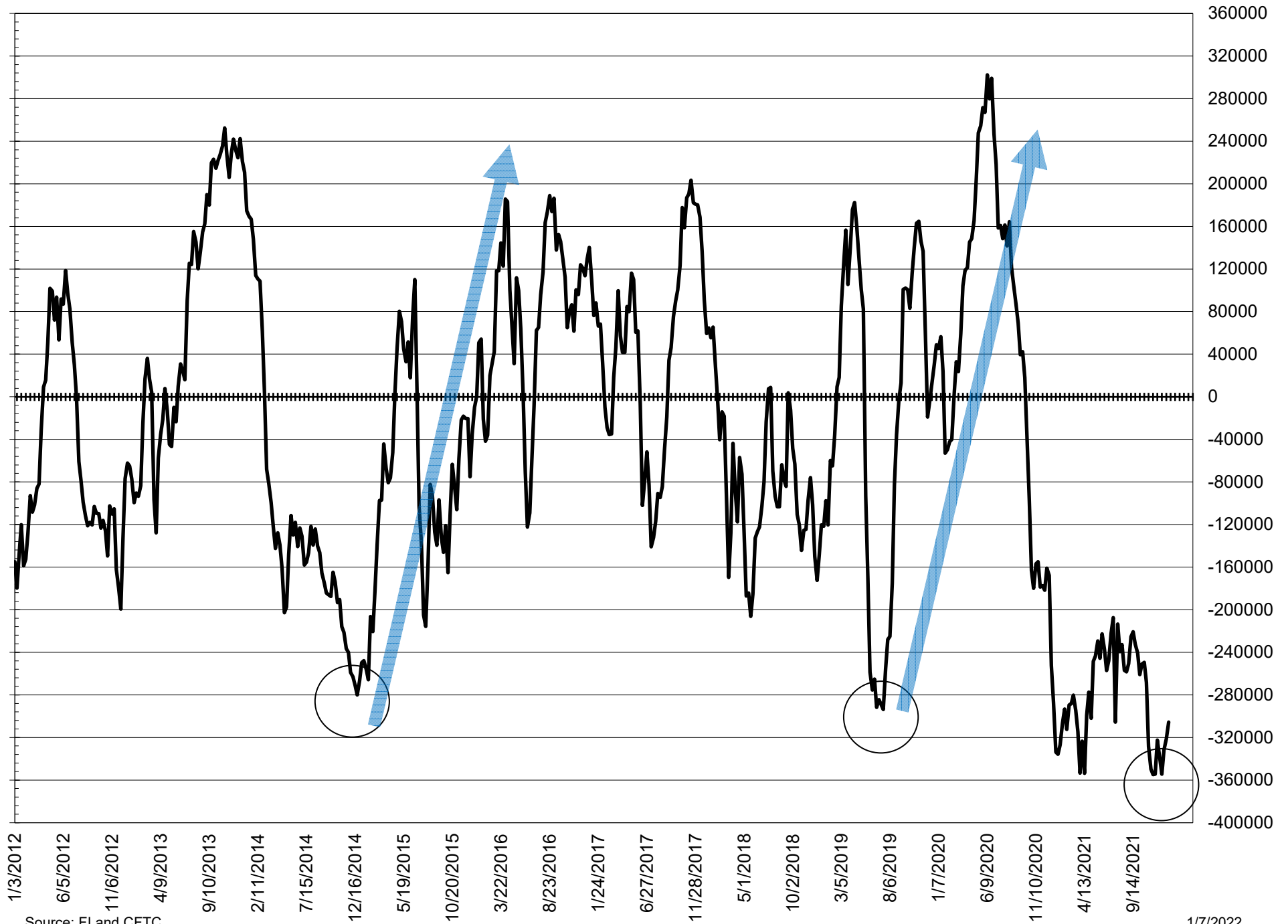
# NET POSITION FUTURES AND OPTIONS OF LARGE SPECULATORS IN SOYBEAN MEAL AND SOYBEAN OIL



# NET POSITION FUTURES AND OPTIONS OF LARGE SPECULATORS IN SOYBEANS AND CORN



# NET POSITION FUTURES AND OPTIONS SPREAD OF LARGE SPECULATORS IN SOYBEANS MINUS CORN



Source: FI and CFTC

1/7/2022

**DISAGGREGATED COMMITMENT OF TRADERS  
FUTURES ONLY NET POSITIONS  
AS OF 01/04/2022  
(IN THOUSAND CONTRACTS)**

	PRODUCER / MERCHANT / PROCESSOR / USER				(INDEX/ETF) SWAP DEALERS				(CTA/CPO/OTHER UNREGISTERED) MANAGED MONEY			
	4-Jan	28-Dec	21-Dec	14-Dec	4-Jan	28-Dec	21-Dec	14-Dec	4-Jan	28-Dec	21-Dec	14-Dec
	WHEAT											
Chicago	(71.7)	(73.4)	(73.6)	(74.9)	77.9	75.0	72.0	69.7	(22.7)	(14.2)	(12.7)	(9.5)
Kansas City	(73.6)	(80.3)	(79.3)	(76.1)	25.6	26.5	26.4	27.3	51.2	58.6	57.9	56.9
Minneapolis	(22.1)	(25.3)	(28.3)	(28.3)	2.0	1.2	1.3	1.1	9.5	12.0	13.1	13.1
All Wheat	(167.4)	(179.1)	(181.1)	(179.3)	105.5	102.7	99.7	98.1	37.9	56.4	58.3	60.5
CORN	(655.7)	(682.8)	(672.0)	(655.3)	272.9	271.0	270.7	273.4	355.4	362.5	350.9	335.5
OATS	-	(0.1)	0.1	(0.2)	-	0.0	(0.0)	(0.0)	-	0.6	0.6	0.6
SOYBEANS	(236.3)	(230.5)	(210.1)	(166.3)	144.4	137.4	137.8	139.2	100.3	99.1	74.0	40.5
SOY OIL	(147.8)	(139.2)	(134.0)	(138.2)	92.0	94.7	94.7	93.9	51.1	43.9	38.5	44.7
SOY MEAL	(212.1)	(202.9)	(190.9)	(182.5)	88.7	88.7	89.5	88.7	70.4	60.8	50.6	40.7

Managed % of OI				
Chicago W	-6%	-4%	-4%	-3%
Corn	23%	24%	24%	23%

	TOTAL OPEN INTEREST				OTHER REPORTABLE				NON REPORTABLE			
	4-Jan	28-Dec	21-Dec	14-Dec	4-Jan	28-Dec	21-Dec	14-Dec	4-Jan	28-Dec	21-Dec	14-Dec
	WHEAT											
Chicago	359,139	356,439	357,381	361,469	26.8	20.1	21.9	21.5	(10.3)	(7.5)	(7.5)	(6.8)
Kansas City	222,583	220,413	216,719	215,046	(6.2)	(6.0)	(7.9)	(11.1)	3.0	1.3	2.8	2.9
Minneapolis	73,366	73,766	74,243	74,886	8.2	8.4	8.9	9.3	2.5	3.7	5.0	4.8
All Wheat	655,088	650,618	648,343	651,401	28.8	22.5	22.9	19.8	(4.8)	(2.5)	0.2	0.9
CORN	1,520,233	1,522,692	1,485,412	1,459,289	90.1	95.6	94.4	91.1	(62.7)	(46.4)	(44.0)	(44.7)
OATS	-	4,383	4,532	4,854	-	0.1	0.1	0.1	-	(0.6)	(0.8)	(0.5)
SOYBEANS	648,148	647,225	654,460	647,243	30.3	26.2	28.9	22.8	(38.7)	(32.2)	(30.5)	(36.1)
SOY OIL	379,609	380,321	406,225	405,768	(1.4)	(3.3)	1.9	(1.5)	6.1	3.9	(1.1)	1.2
SOY MEAL	389,727	388,667	400,752	389,271	28.6	30.9	29.5	30.7	24.4	22.4	21.3	22.4

SOURCE: CFTC & FI

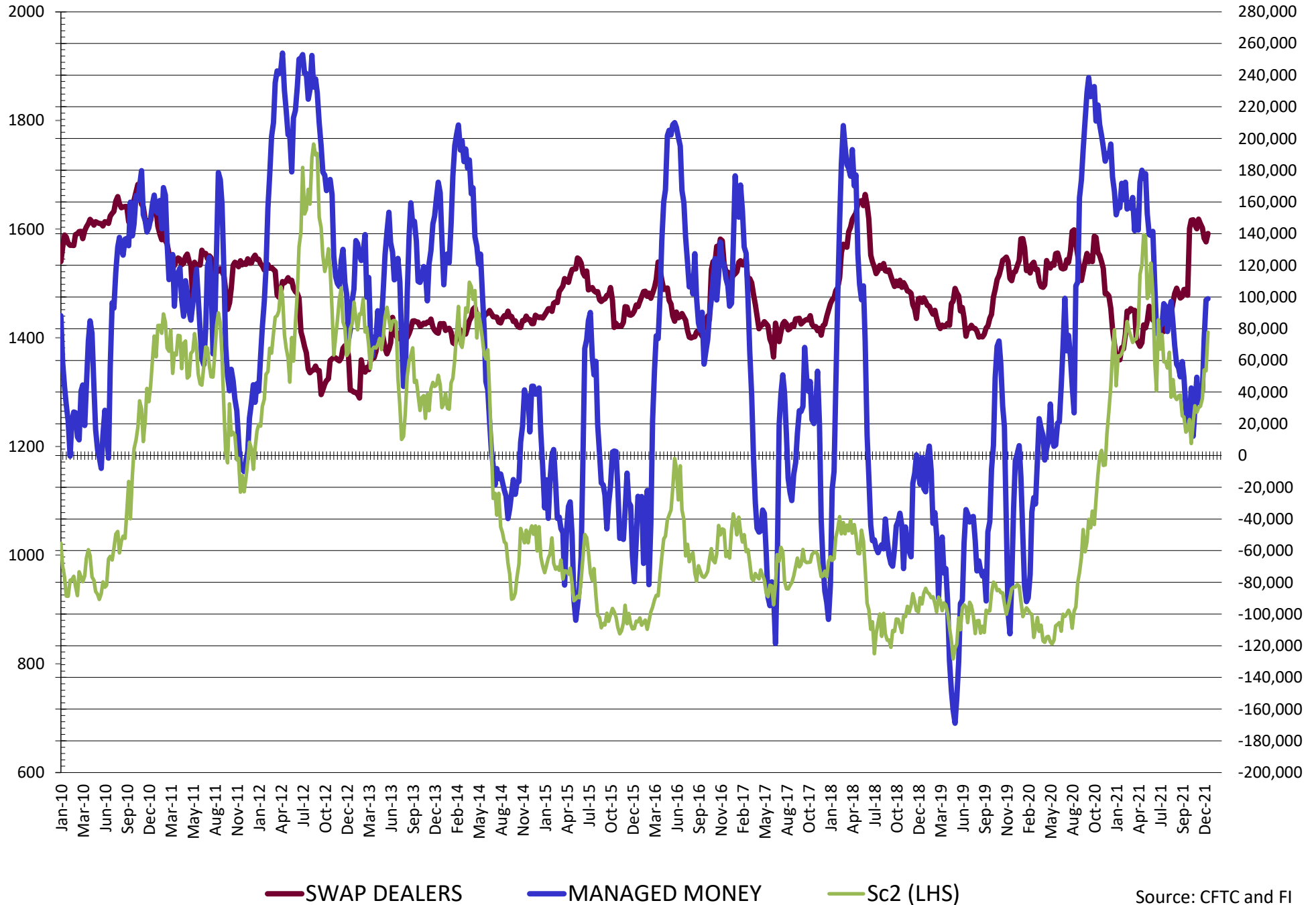
**DISAGGREGATED COMMITMENT OF TRADERS  
FUTURES & OPTIONS NET POSITIONS  
AS OF 01/04/2022  
(IN THOUSAND CONTRACTS)**

	PRODUCER / MERCHANT / PROCESSOR / USER				(INDEX/ETF) SWAP DEALERS				(CTA/CPO/OTHER UNREGISTERED) MANAGED MONEY											
	4-Jan	28-Dec	21-Dec	14-Dec	4-Jan	28-Dec	21-Dec	14-Dec	4-Jan	28-Dec	21-Dec	14-Dec								
	WHEAT																			
Chicago	(62.4)	(66.5)	(64.4)	(64.8)	77.4	73.5	70.2	68.2	(19.8)	(11.8)	(11.0)	(7.3)								
Kansas City	(72.2)	(79.6)	(77.3)	(75.0)	24.8	25.6	25.6	26.7	51.8	59.4	58.8	57.2								
Minneapolis	(20.7)	(24.2)	(27.2)	(27.3)	1.6	1.1	1.2	1.0	9.5	12.0	13.2	13.2								
All Wheat	(155.3)	(170.2)	(168.9)	(167.2)	103.8	100.2	97.0	95.9	41.4	59.7	61.0	63.1								
CORN	(648.9)	(674.3)	(662.9)	(648.3)	261.2	260.2	262.9	268.1	365.9	373.3	360.4	346.0								
OATS	0.0	(0.1)	0.1	(0.2)	0.0	0.0	(0.0)	(0.0)	0.0	0.6	0.6	0.6								
SOYBEANS	(232.7)	(228.2)	(206.7)	(165.8)	140.1	134.8	137.1	143.6	98.9	98.1	72.9	41.0								
SOY OIL	(142.0)	(132.4)	(121.6)	(127.2)	91.2	94.1	94.7	94.1	53.2	45.4	39.1	44.8								
SOY MEAL	(211.0)	(203.3)	(192.3)	(181.5)	87.1	87.0	87.5	87.4	70.8	61.2	50.6	40.5								
	TOTAL				OTHER REPORTABLE				NON REPORTABLE											
	OPEN INTEREST				4-Jan				28-Dec				21-Dec				14-Dec			
	4-Jan	28-Dec	21-Dec	14-Dec	4-Jan	28-Dec	21-Dec	14-Dec	4-Jan	28-Dec	21-Dec	14-Dec	4-Jan	28-Dec	21-Dec	14-Dec				
WHEAT																				
Chicago	439,485	433,728	444,789	444,225	14.3	11.4	11.8	9.7	(9.4)	(6.7)	(6.6)	(5.8)								
Kansas City	247,064	244,520	247,544	239,385	(7.8)	(6.8)	(10.2)	(12.0)	3.5	1.4	3.1	3.2								
Minneapolis	77,161	77,597	78,648	79,137	6.9	7.0	7.6	8.1	2.7	4.0	5.2	5.0								
All Wheat	763,710	755,845	770,981	762,747	13.4	11.7	9.2	5.9	(3.3)	(1.3)	1.8	2.4								
CORN	1,865,691	1,843,102	1,801,189	1,757,032	71.4	74.4	72.5	68.8	(49.6)	(33.7)	(33.7)	(33.7)								
OATS	0	4,486	4,634	4,955	0.0	0.1	0.1	0.1	0.0	(0.6)	(0.8)	(0.5)								
SOYBEANS	789,340	767,439	789,405	767,185	32.9	28.4	28.3	19.5	(39.1)	(33.0)	(31.6)	(38.2)								
SOY OIL	422,697	419,844	456,215	451,435	(9.5)	(11.9)	(12.5)	(14.2)	7.1	4.9	0.4	2.5								
SOY MEAL	436,279	430,303	452,464	434,693	25.9	29.4	29.1	27.6	27.3	25.8	25.2	25.9								

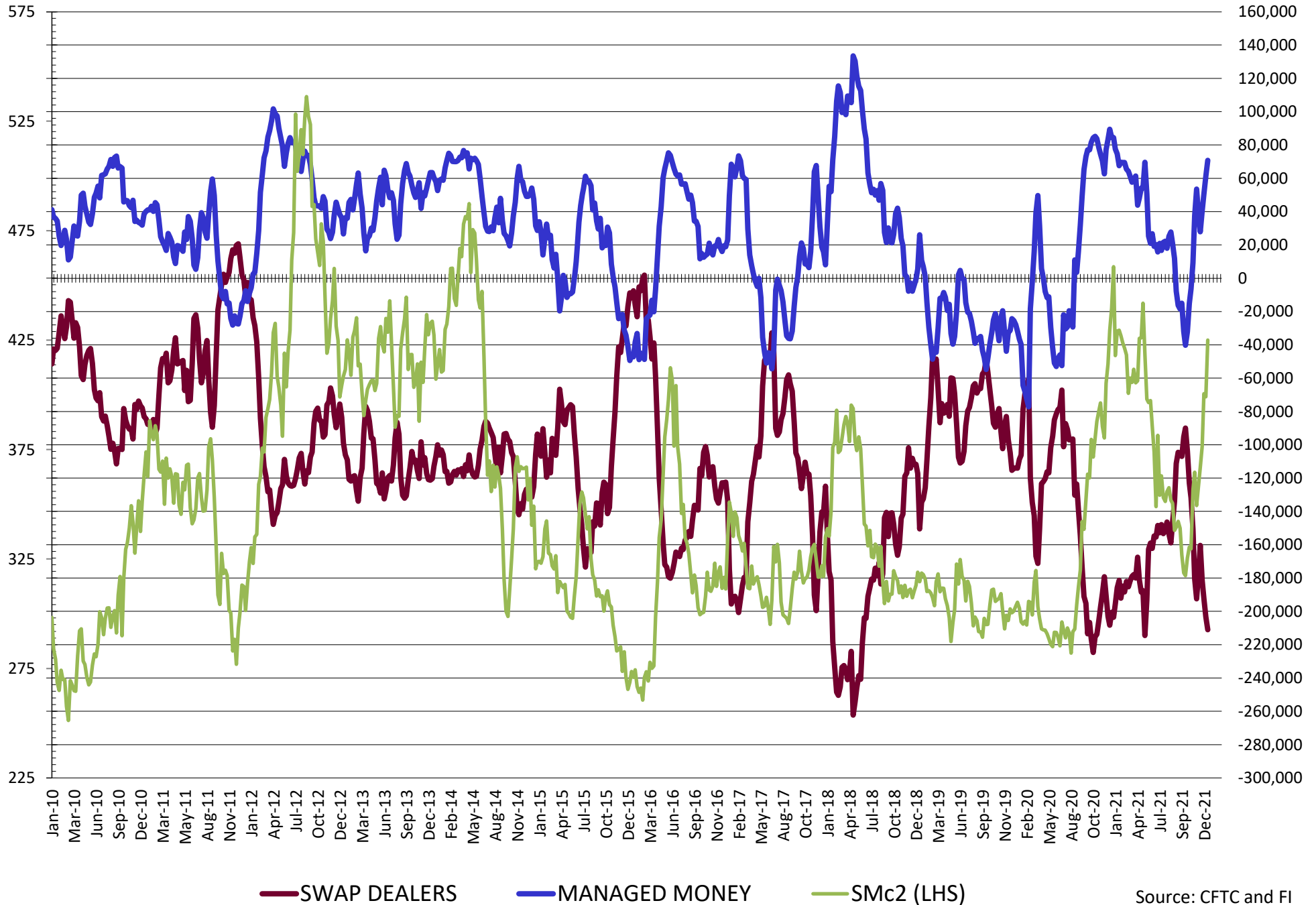
SOURCE: CFTC & FI



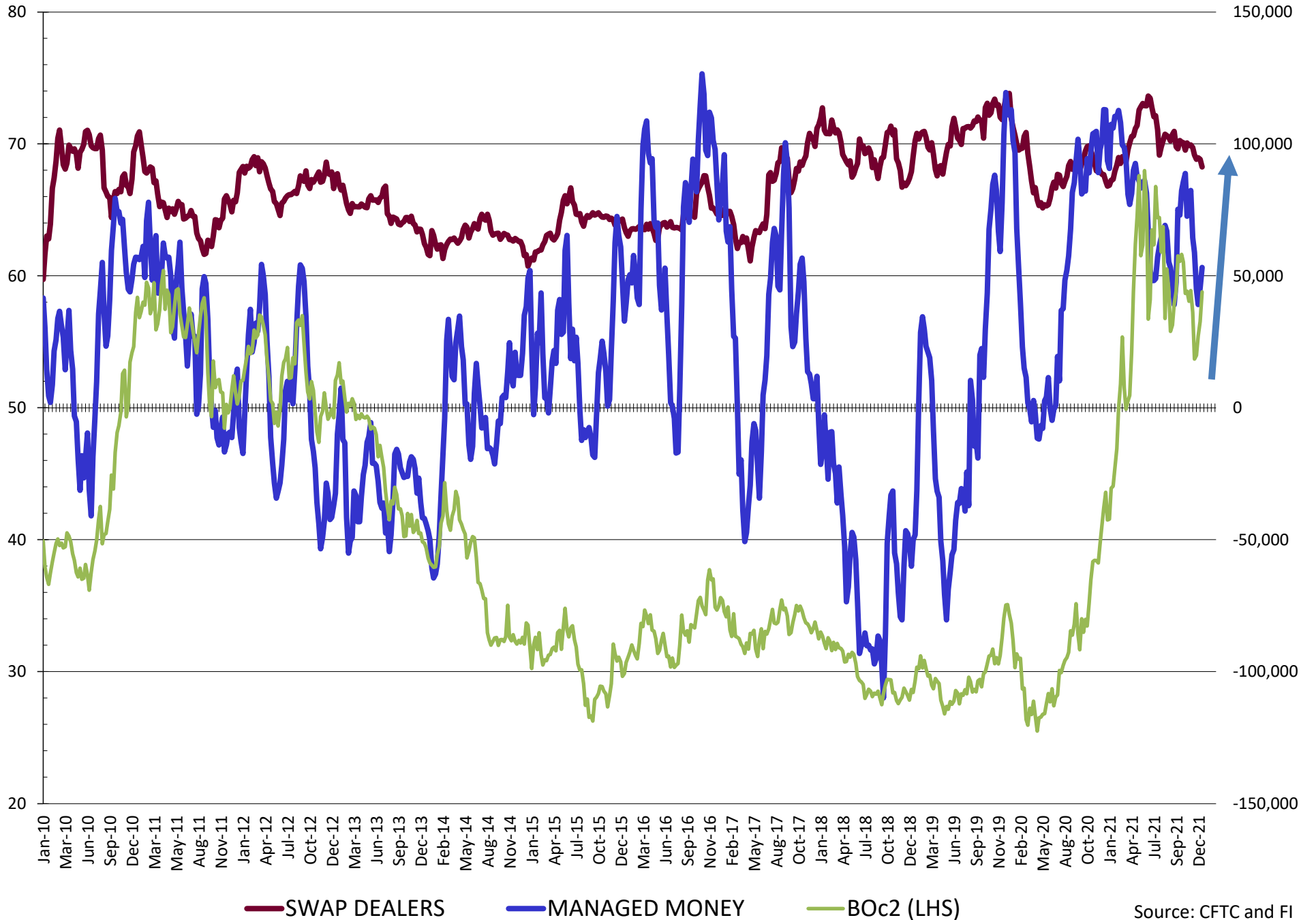
# NET POSITION FUTURES AND OPTIONS OF SWAP AND MANAGED FUNDS IN SOYBEANS



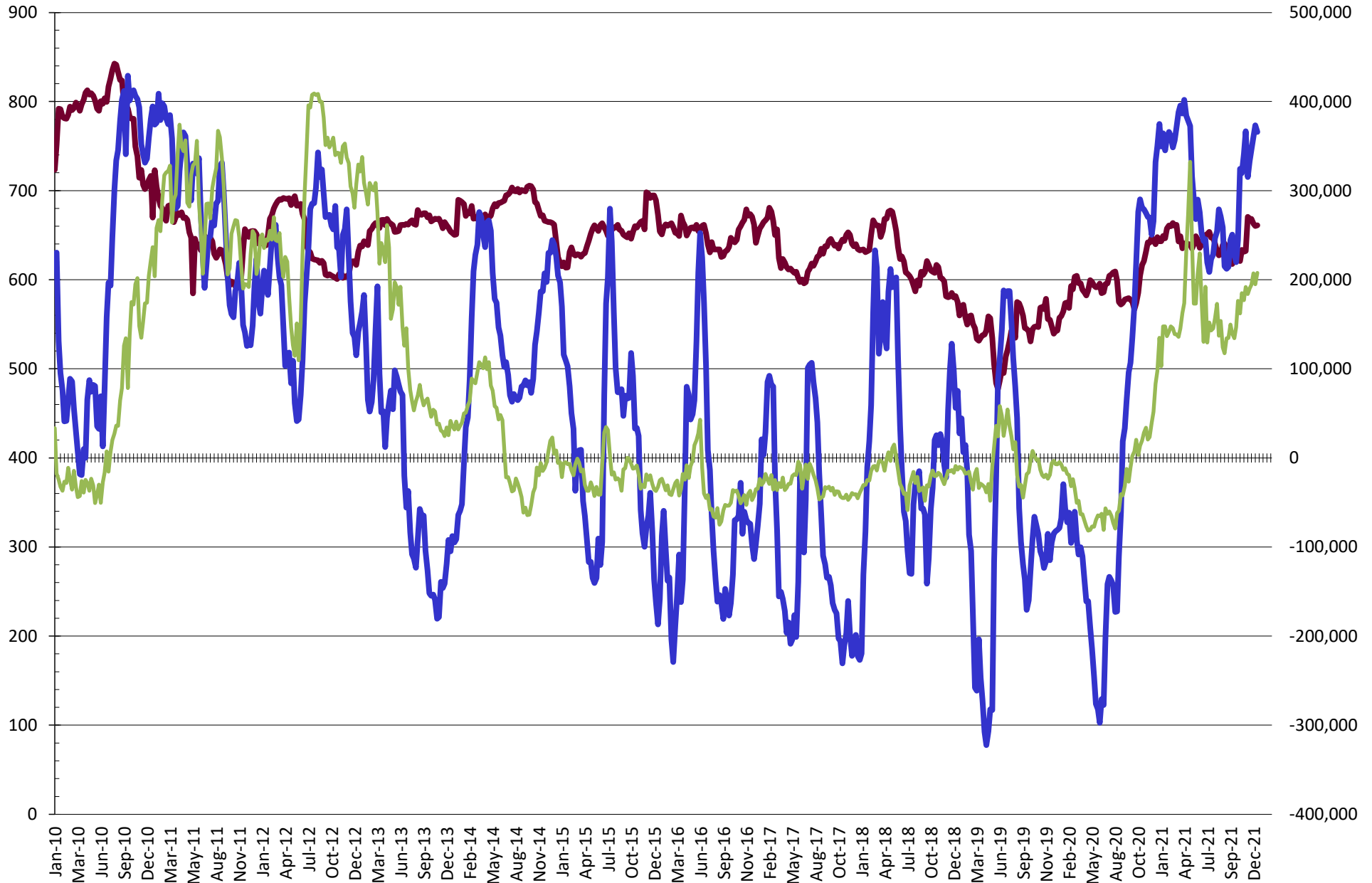
# NET POSITION FUTURES AND OPTIONS OF SWAP AND MANAGED FUNDS IN SOYBEAN MEAL



# NET POSITION FUTURES AND OPTIONS OF SWAP AND MANAGED FUNDS IN SOYBEAN OIL

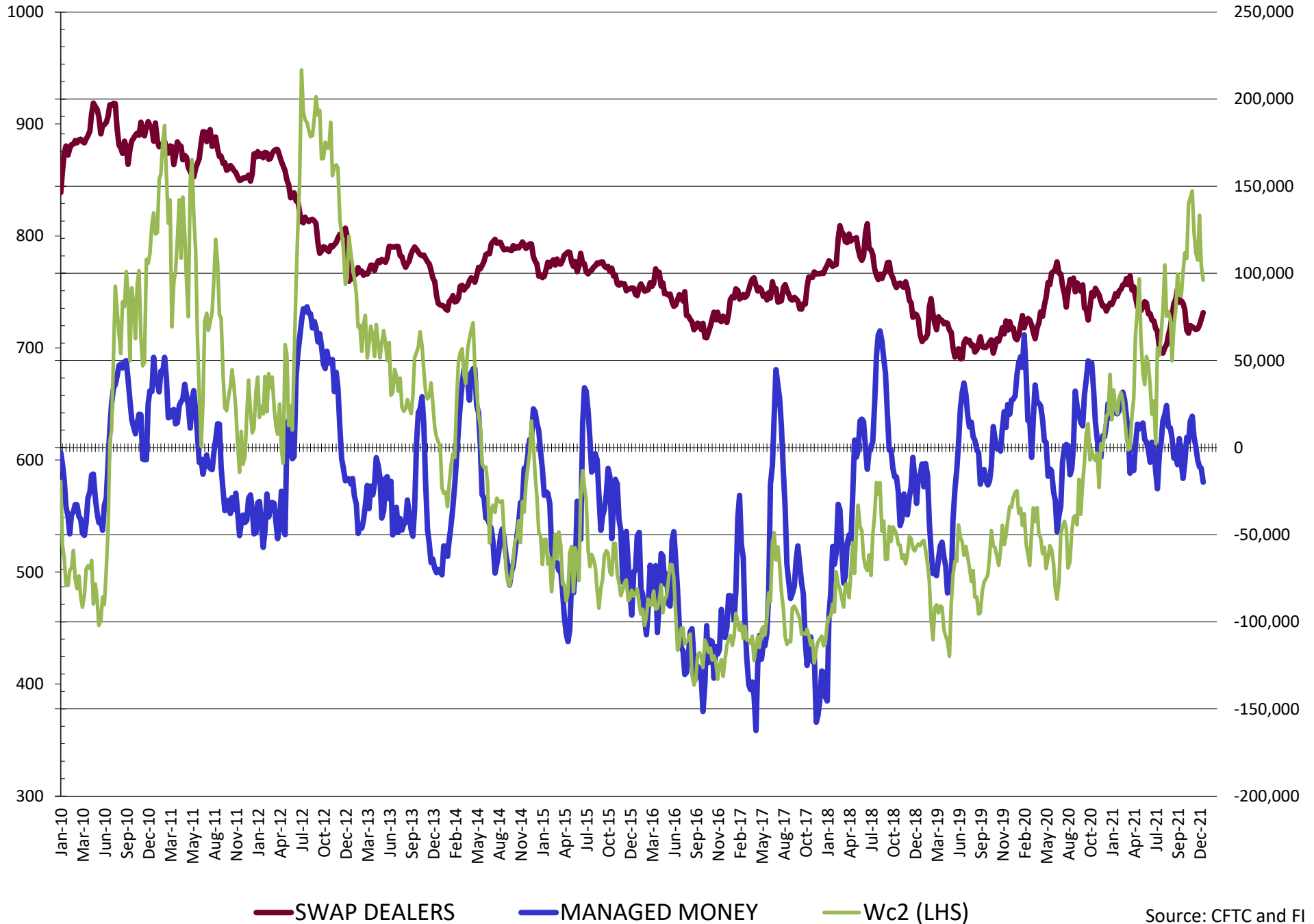


# NET POSITION FUTURES AND OPTIONS OF SWAP AND MANAGED FUNDS IN CORN

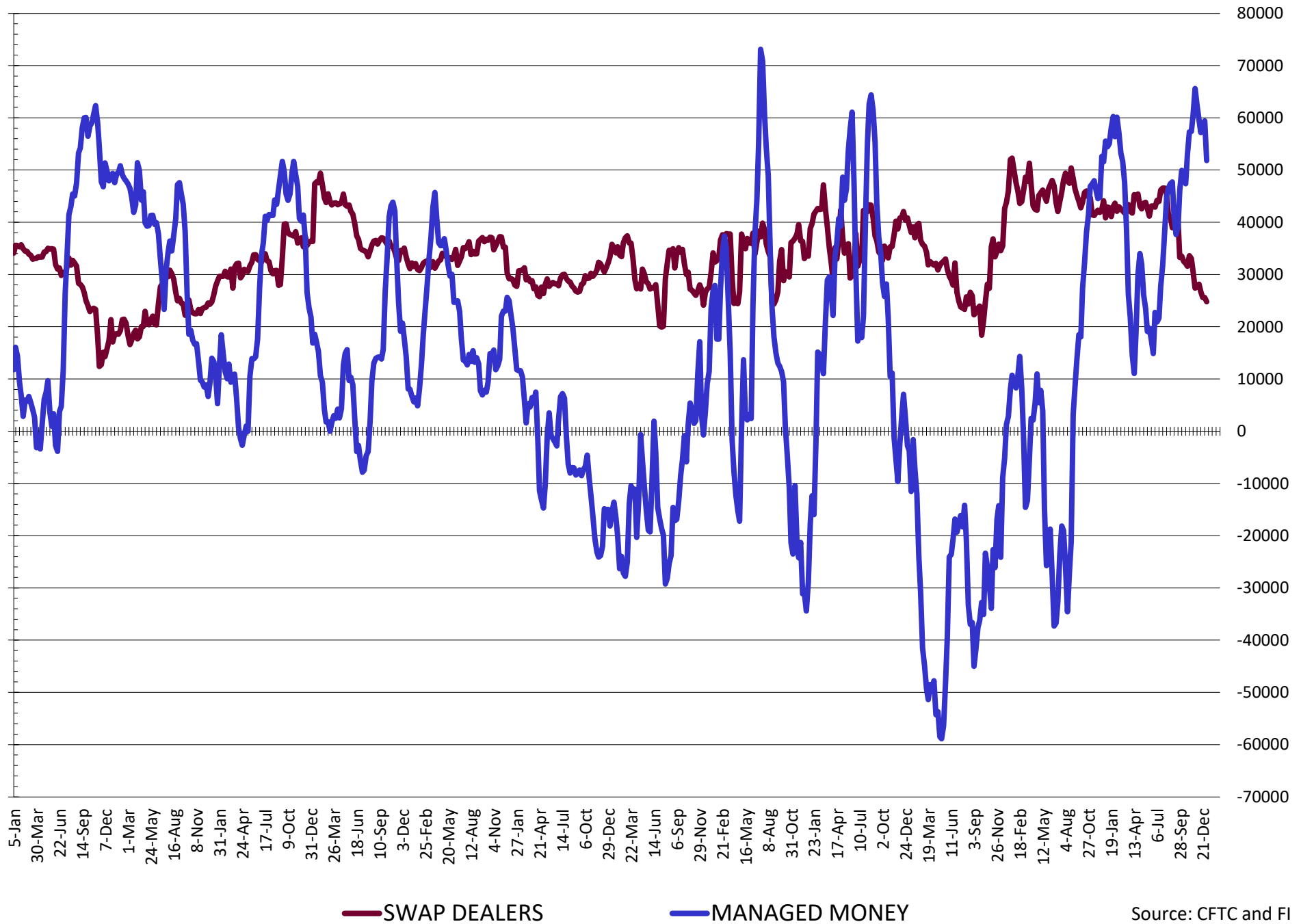


— SWAP DEALERS     
 — MANAGED MONEY     
 — Cc2 (LHS)

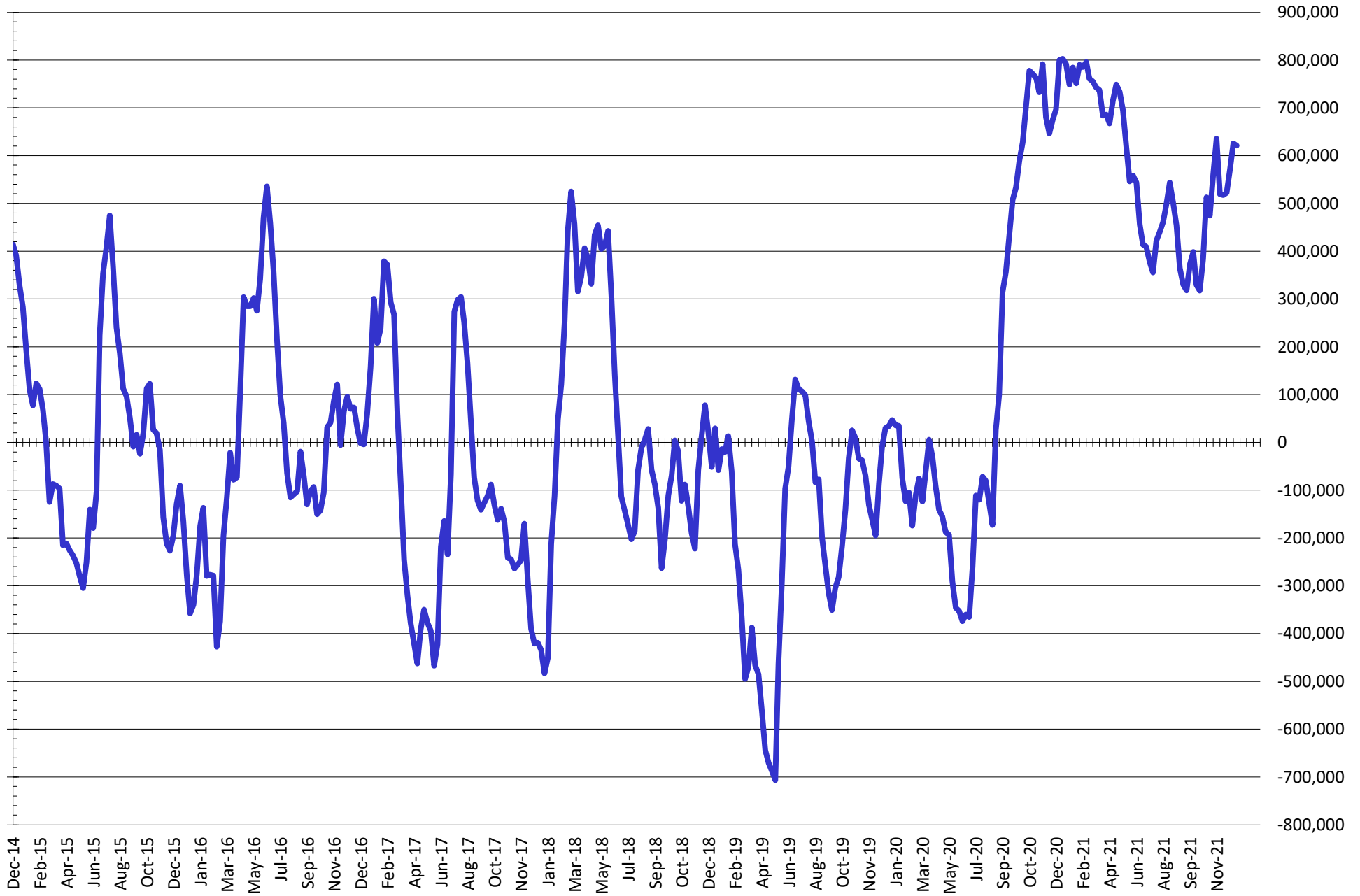
# NET POSITION FUTURES AND OPTIONS OF SWAP AND MANAGED FUNDS IN CHICAGO WHEAT



# NET POSITION FUTURES AND OPTIONS OF SWAP AND MANAGED FUNDS IN KANSAS WHEAT



# NET POSITION FUTURES AND OPTIONS OF SWAP AND MANAGED FUNDS IN COMBINED SRW, HRW, CORN, SOYBEANS, SOYMEAL AND SOYOIL



— Net Managed Money

Source: CFTC and FI  
1/7/2022

**COMMITMENT OF TRADERS**  
**FUTURES & OPTIONS NET POSITIONS (INDEX BROKEN OUT)**  
**AS OF 01/04/2022**  
(IN THOUSAND CONTRACTS)

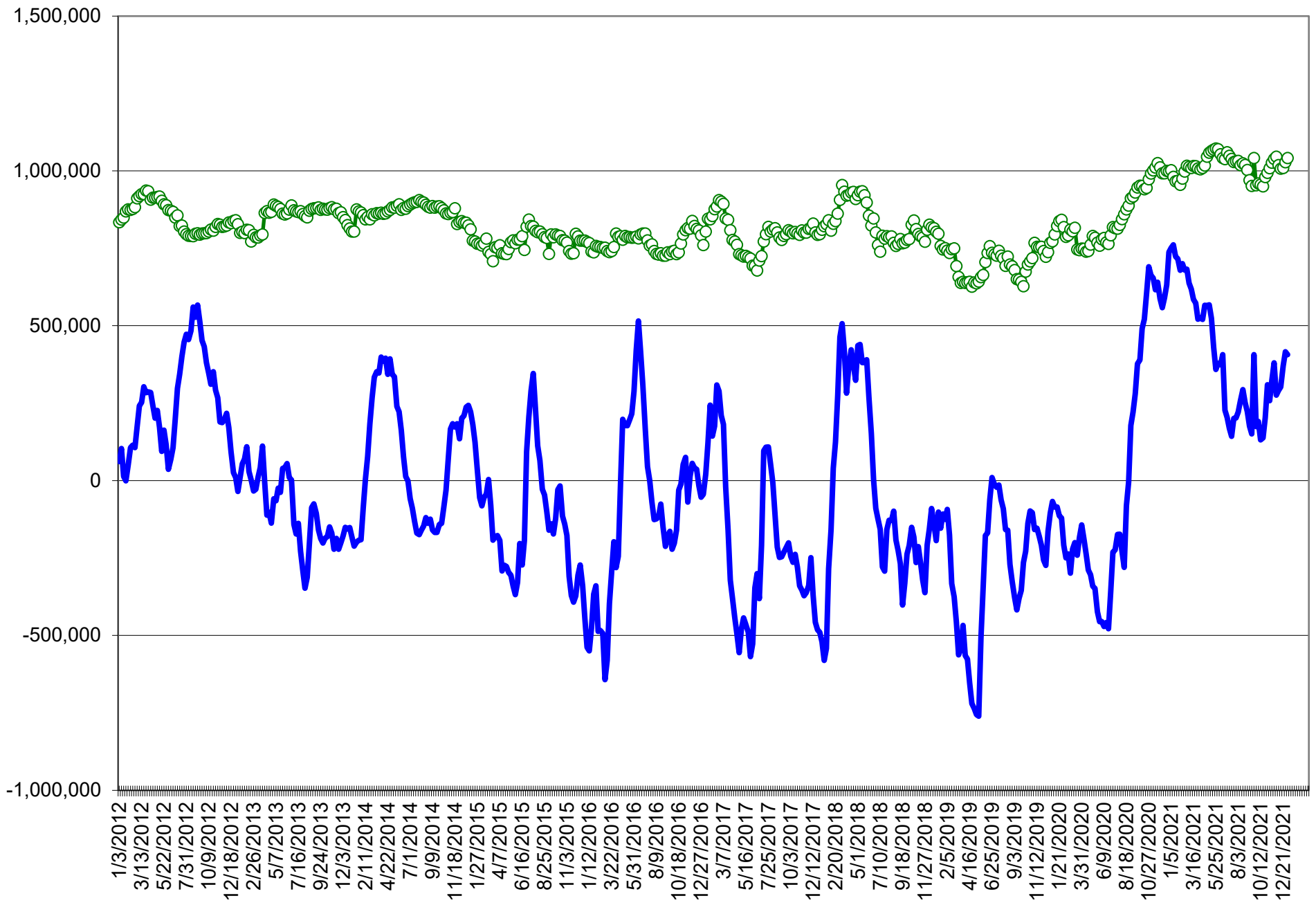
	COMMERCIAL				(FUND) NON COMMERCIAL				(SPEC) NON-REPORTABLE			
	4-Jan	28-Dec	21-Dec	14-Dec	4-Jan	28-Dec	21-Dec	14-Dec	4-Jan	28-Dec	21-Dec	14-Dec
	WHEAT											
Chicago	(79.1)	(84.2)	(81.9)	(81.6)	(36.1)	(30.5)	(28.1)	(26.8)	(9.4)	(6.7)	(6.6)	(5.8)
Kansas City	(84.5)	(92.7)	(90.3)	(88.0)	21.5	29.7	29.8	27.3	3.5	1.4	3.1	3.2
Minneapolis	-	-	-	-	-	-	-	-	-	-	-	-
All Wheat	(163.6)	(177.0)	(172.2)	(169.6)	(14.6)	(0.8)	1.7	0.4	(6.0)	(5.3)	(3.5)	(2.6)
CORN	(658.2)	(683.3)	(669.8)	(648.6)	269.0	282.8	275.0	256.4	(49.6)	(33.7)	(32.9)	(34.6)
OATS	-	-	-	-	-	-	-	-	-	-	-	-
SOYBEANS	(227.7)	(224.9)	(201.2)	(155.8)	85.9	80.7	57.2	16.9	(39.1)	(33.0)	(31.6)	(38.2)
SOY OIL	(137.1)	(124.7)	(113.1)	(119.4)	9.0	1.6	(5.1)	(2.1)	7.1	4.9	0.4	2.5
SOY MEAL	(200.7)	(192.6)	(180.7)	(168.7)	57.0	51.8	41.4	30.2	27.3	25.8	25.2	25.9

	TOTAL OPEN INTEREST				(INDEX) COMMERCIAL INDEX TRADERS				(INDEX) % NET OF TOTAL OPEN INTEREST			
	4-Jan	28-Dec	21-Dec	14-Dec	4-Jan	28-Dec	21-Dec	14-Dec	4-Jan	28-Dec	21-Dec	14-Dec
	WHEAT											
Chicago	439,485	433,728	444,789	444,225	124.6	121.4	116.6	114.2	28.4%	28.0%	26.2%	25.7%
Kansas City	247,064	244,520	247,544	239,385	59.6	61.7	57.4	57.6	24.1%	25.2%	23.2%	24.1%
Minneapolis	-	-	-	-	-	-	-	-	-	-	-	-
All Wheat	686,549	678,248	692,333	683,610	184.2	183.1	174.0	171.8	26.8%	27.0%	25.1%	25.1%
CORN	1,865,691	1,843,102	1,801,189	1,757,032	438.8	434.2	427.7	426.8	23.5%	23.6%	23.7%	24.3%
OATS	-	-	-	-	-	-	-	-	-	-	-	-
SOYBEANS	789,340	767,439	789,405	767,185	180.9	177.1	175.5	177.1	22.9%	23.1%	22.2%	23.1%
SOY OIL	422,697	419,844	456,215	451,435	121.0	118.3	117.8	119.0	28.6%	28.2%	25.8%	26.4%
SOY MEAL	436,279	430,303	452,464	434,693	116.4	115.0	114.2	112.5	26.7%	26.7%	25.2%	25.9%

SOURCE: CFTC & FI



# NET POSITION FUTURES AND OPTIONS OF SPECULATORS AND INDEX FUNDS IN COMBINED SRW, HRW, CORN, SOYBEANS, SOYMEAL AND SOYOIL



Source: CFTC and FI

○ Net Index      — Net Speculator

## Traditional Daily Estimate of Funds 1/4/22

	(Neg)-"Short"	Pos-"Long"			
Actual less Est.	(19.7)	(8.7)	3.2	7.3	1.1
	<b>Corn</b>	<b>Bean</b>	<b>Chi. Wheat</b>	<b>Meal</b>	<b>Oil</b>
Act.	445.5	130.6	4.1	99.0	49.7
5-Jan	(6.0)	2.0	(5.0)	(2.0)	3.0
6-Jan	2.0	(3.0)	(9.0)	(4.0)	(2.0)
7-Jan	4.0	13.0	6.0	7.0	(2.0)
10-Jan					
11-Jan					
<b>FI Est. of Futures Only 1/4/22</b>	<b>445.5</b>	<b>142.6</b>	<b>(3.9)</b>	<b>100.0</b>	<b>48.7</b>
<b>FI Est. Futures &amp; Options</b>	<b>437.3</b>	<b>143.8</b>	<b>(13.5)</b>	<b>97.6</b>	<b>42.6</b>
Futures only record long "Traditional Funds"	547.7 1/26/2021	280.9 11/10/2020	86.5 8/7/2018	167.5 5/1/2018	160.2 11/1/2016
Futures only record short	(235.0) 6/9/2020	(118.3) 4/30/2019	(130.0) 4/25/2017	(49.5) 3/1/2016	(69.8) 9/18/2018
Futures and options record net long	557.6 1/12/2021	270.9 10/6/2020	64.8 8/7/2012	132.1 5/1/2018	159.2 1/1/2016
Futures and options record net short	(270.6) 4/26/2019	(132.0) 4/30/2019	(143.3) 4/25/2017	(64.1) 3/1/2016	(77.8) 9/18/2018

## Managed Money Daily Estimate of Funds 1/4/22

	Corn	Bean	Chi. Wheat	Meal	Oil
Latest CFTC Fut. Only	355.4	100.3	(22.7)	70.4	51.1
Latest CFTC F&O	365.9	98.9	(19.8)	70.8	53.2
FI Est. Managed Fut. Only	355	112	(31)	71	50
FI Est. Managed Money F&O	366	111	(28)	72	52

## Index Funds Latest Positions (as of last Tuesday)

Index Futures & Options	438.8	180.9	124.6	NA	121.0
Change From Previous Week	4.6	3.8	3.2	NA	2.7

Source: Reuters, CFTC & FI (FI est. are noted with latest date)

# Disclaimer

TO CLIENTS/PROSPECTS OF FUTURES INTERNATIONAL, SEE RISK DISCLOSURE BELOW:

THIS COMMUNICATION IS CONVEYED AS A SOLICITATION FOR ENTERING INTO A DERIVATIVES TRANSACTION.

Any trading recommendations and market or other information to Customer by Futures International (FI), although based upon information obtained from sources believed by FI to be reliable may not be accurate and may be changed without notice to customer. FI makes no guarantee as to the accuracy or completeness of any of the information or recommendations furnished to Customer. Customer understands that FI, its managers, employees and/or affiliates may have a position in commodity futures, options or other derivatives which may not be consistent with the recommendations furnished by FI to Customer.

The risk of trading futures and options and other derivatives involves a substantial risk of loss and is not suitable for all persons. In purchasing an option, the risk is limited to the premium paid, and all commissions and fees involved with the trade. When an option is shorted or written, the writer of the option has unlimited risk with respect to the option written. The use of options strategies such as a straddles and strangles involve multiple option positions and may substantially increase the amount of commissions and fees paid to execute the strategy. Option prices do not necessarily move in tandem with cash or futures prices. Each person must consider whether a particular trade, combination of trades or strategy is suitable for that person's financial means and objectives.

This material may include discussions of seasonal patterns, however, futures prices have already factored in the seasonal aspects of supply and demand, and seasonal patterns are no indication of future market trends. Finally, past performance is not indicative of future results.

This communication may contain links to third party websites which are not under the control of FI and FI is not responsible for their content. Products and services are offered only in jurisdictions where solicitation and sale are lawful, and in accordance with applicable laws and regulations in each such jurisdiction.