

CFTC COMMITMENT OF TRADERS REPORT

As of 12/28/2021

TRADITIONAL FUNDS net position changes

Wed to Tue, in 000 contracts

	Corn	Bean	Meal	Oil	Chi. Wheat	KC Wheat	Min Wheat
Futures Only	12.9	22.4	11.6	0.2	(3.2)	2.5	(1.6)
Futures & Options Combined	14.9	25.3	10.9	6.9	(1.1)	4.0	(1.7)

TRADITIONAL COMMERCIAL net position changes

	Corn	Bean	Meal	Oil	Chi. Wheat	KC Wheat	Min Wheat
Futures Only	(10.5)	(20.7)	(12.7)	(5.2)	3.2	(1.0)	2.9
Futures & Options Combined	(14.0)	(23.9)	(11.5)	(11.4)	1.3	(2.3)	3.0

MANAGED MONEY net position changes

	Corn	Bean	Meal	Oil	Chi. Wheat	KC Wheat	Min Wheat
Futures Only	11.6	25.2	10.2	5.4	(1.4)	0.6	(1.1)
Futures & Options Combined	12.9	25.2	10.6	6.3	(0.8)	0.6	(1.1)

SWAP DEALERS net position changes

	Corn	Bean	Meal	Oil	Chi. Wheat	KC Wheat	Min Wheat
Futures Only	0.2	(0.4)	(0.7)	(0.1)	2.9	0.1	(0.0)
Futures & Options Combined	(2.6)	(2.3)	(0.5)	(0.6)	3.3	0.0	(0.0)

PRODUCERS/END USERS net position changes

	Corn	Bean	Meal	Oil	Chi. Wheat	KC Wheat	Min Wheat
Futures Only	(10.7)	(20.4)	(11.9)	(5.2)	0.2	(1.1)	2.9
Futures & Options Combined	(11.4)	(21.6)	(11.0)	(10.8)	(2.0)	(2.3)	3.0

INDEX net position changes

	Corn	Bean	Meal	Oil	Chi. Wheat	KC Wheat	Min Wheat
Futures & Options Combined	6.5	1.6	0.9	0.4	4.9	4.3	NA

SUPPLEMENTAL NON-COMMERCIAL net position changes

	Corn	Bean	Meal	Oil	Chi. Wheat	KC Wheat	Min Wheat
Futures & Options Combined	7.8	23.5	10.4	6.7	(2.4)	(0.1)	NA

OPEN INTEREST net position changes

Wed to Tue, in 000 contracts

	Corn	Bean	Meal	Oil	Chi. Wheat	KC Wheat	Min Wheat
Futures Only	37.3	(7.2)	(12.1)	(25.9)	(0.9)	3.7	(0.5)
Futures & Options Combined	41.9	(22.0)	(22.2)	(36.4)	(11.1)	(3.0)	(1.1)

Source: CFTC and FI

Wed to Tue, in 000 contracts

**COMMITMENT OF TRADERS
FUTURES ONLY NET POSITIONS
AS OF 12/28/2021
(IN THOUSAND CONTRACTS)**

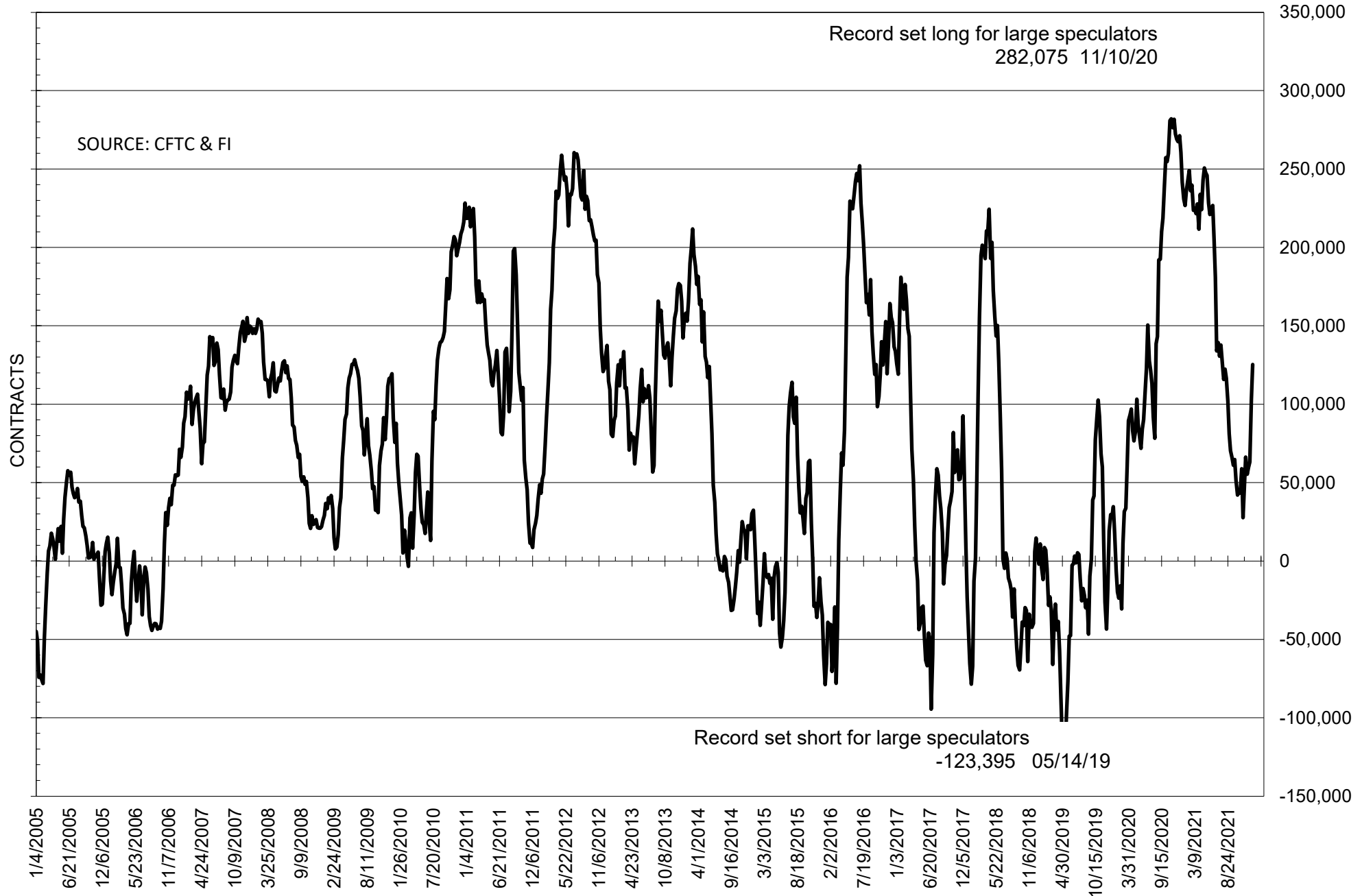
	COMMERCIAL				(FUND) NON COMMERCIAL				(SPEC) NON-REPORTABLE			
	28-Dec	21-Dec	14-Dec	7-Dec	28-Dec	21-Dec	14-Dec	7-Dec	28-Dec	21-Dec	14-Dec	7-Dec
	WHEAT											
Chicago	1.6	-1.6	-5.2	-8.4	5.9	9.1	12.0	15.7	-7.5	-7.5	-6.8	-7.3
Kansas City	-53.8	-52.9	-48.8	-52.2	52.6	50.1	45.8	49.1	1.3	2.8	2.9	3.1
Minneapolis	-24.1	-27.0	-27.2	-27.5	20.4	22.0	22.5	21.7	3.7	5.0	4.8	5.8
All Wheat	-76.4	-81.5	-81.2	-88.1	78.9	81.3	80.3	86.5	-2.5	0.2	0.9	1.6
CORN	-411.8	-401.3	-381.9	-367.9	458.2	445.3	426.6	410.8	-46.4	-44.0	-44.7	-42.9
OATS	-0.1	0.1	-0.2	-0.4	0.7	0.7	0.7	0.7	-0.6	-0.8	-0.5	-0.3
SOYBEANS	-93.1	-72.4	-27.2	-22.7	125.3	102.9	63.2	59.7	-32.2	-30.5	-36.1	-36.9
SOY OIL	-44.5	-39.3	-44.3	-65.5	40.6	40.4	43.2	62.4	3.9	-1.1	1.2	3.1
SOY MEAL	-114.1	-101.5	-93.9	-74.3	91.7	80.1	71.4	52.6	22.4	21.3	22.4	21.7

Oats positions thin to be reported

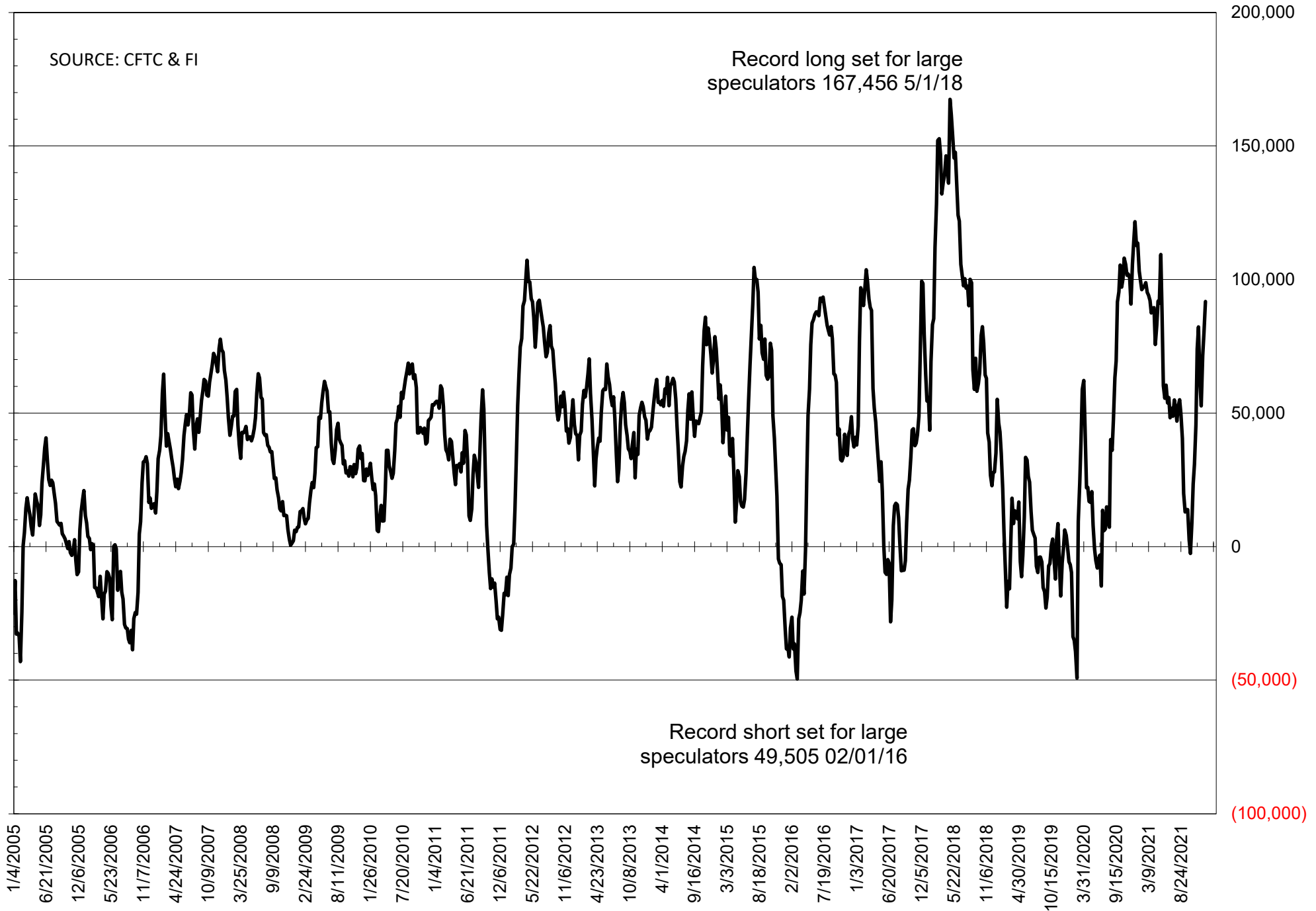
	TOTAL OPEN INTEREST				NEARBY FUTURES PRICE					28-Dec-21 LAST REPORTED % HELD BY TRADERS			
	28-Dec	21-Dec	14-Dec	7-Dec	H Latest	F/H 28-Dec	F/H 21-Dec	F/H 14-Dec	F/H 7-Dec	LARGE FUND		SMALL	
										LONG	SHORT	LONG	SHORT
WHEAT													
Chicago	356439	357381	361469	359186	758.00	783.50	799.00	787.00	808.50	0%	27%	0%	11%
Kansas City	220413	216719	215046	221831	791.50	821.75	841.50	811.75	827.50	0%	15%	0%	10%
Minneapolis	73766	74243	74886	75116	967.75	1002.50	1025.50	1017.00	1036.50	0%	7%	0%	14%
CORN	1522692	1485412	1459289	1430401	589.25	604.75	598.25	590.25	586.00	0%	5%	0%	12%
OATS	4383	4532	4854	4732	680.75	702.50	666.75	715.00	732.25	0%	4%	0%	65%
SOYBEANS	647225	654460	647243	672116	1355.50	1359.25	1308.00	1264.50	1250.25	26%	7%	8%	12%
SOY OIL	380321	406225	405768	384956	55.42	56.55	53.90	52.24	57.10	0%	13%	0%	7%
SOY MEAL	388667	400752	389271	381626	411.30	415.90	394.00	376.90	349.70	0%	5%	0%	6%

SOURCE: CFTC & FI

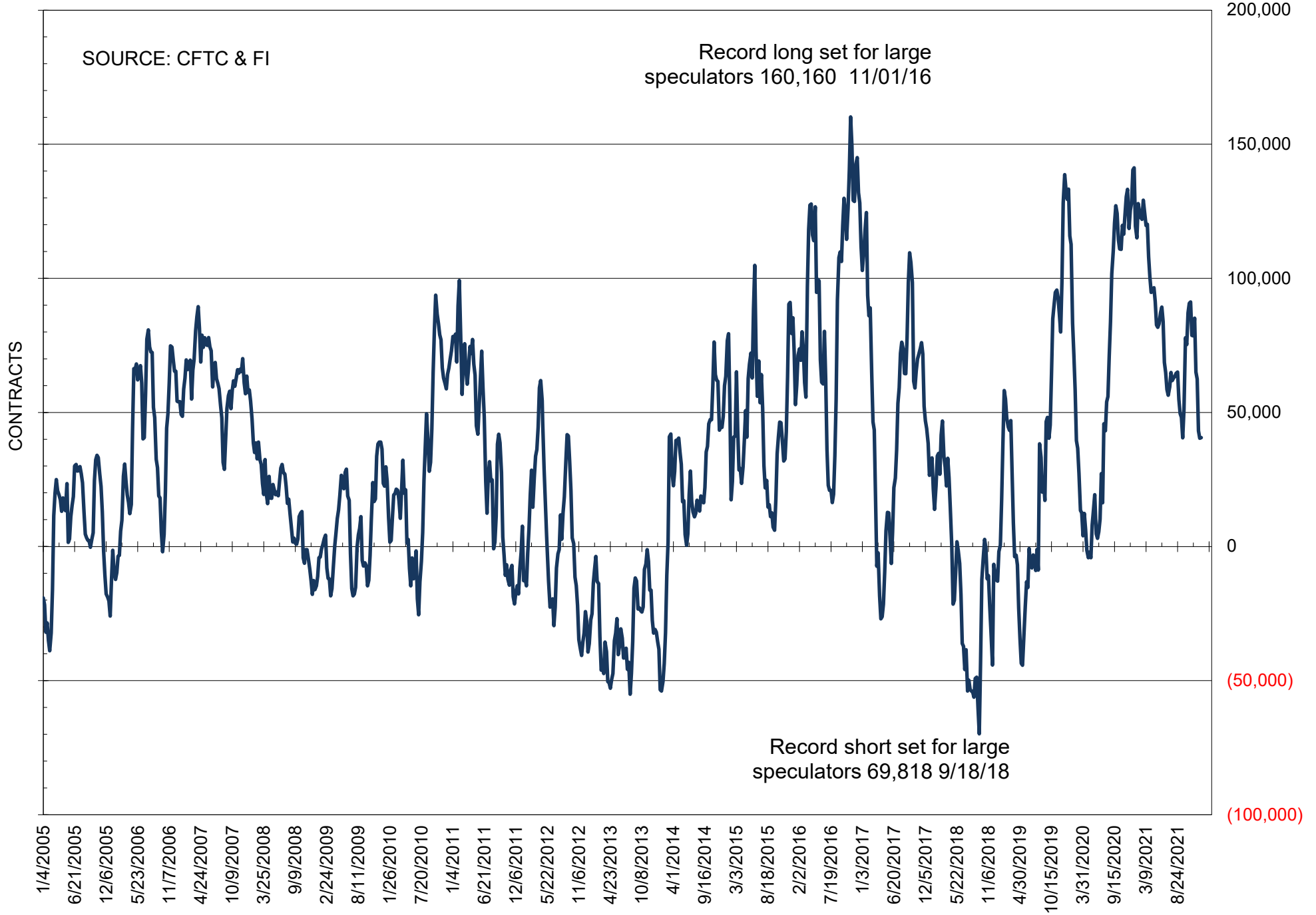
NET POSITION OF FUTURES ONLY LARGE SPECS IN SOYBEANS



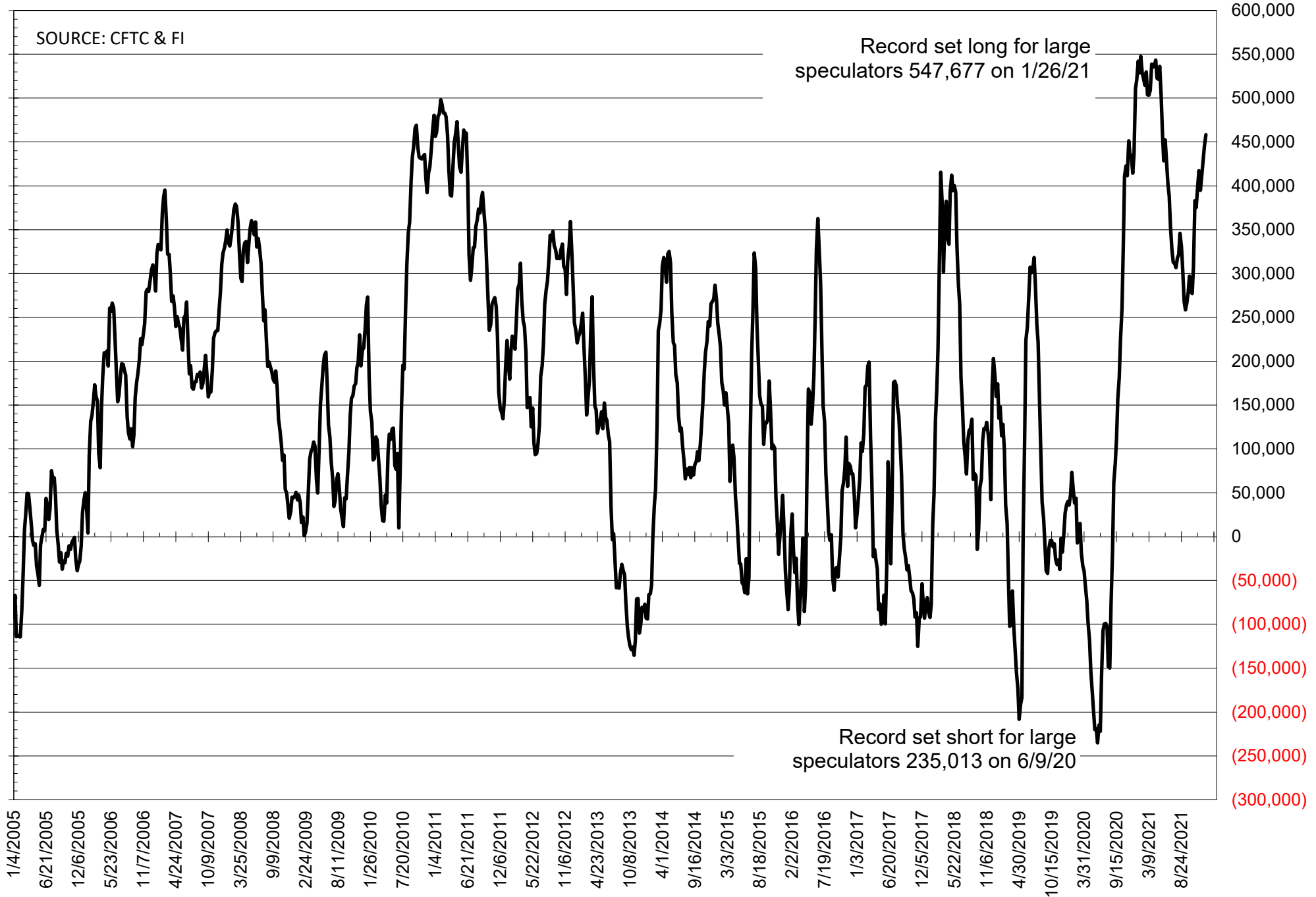
NET POSITION OF FUTURES ONLY LARGE SPECS IN SOYMEAL



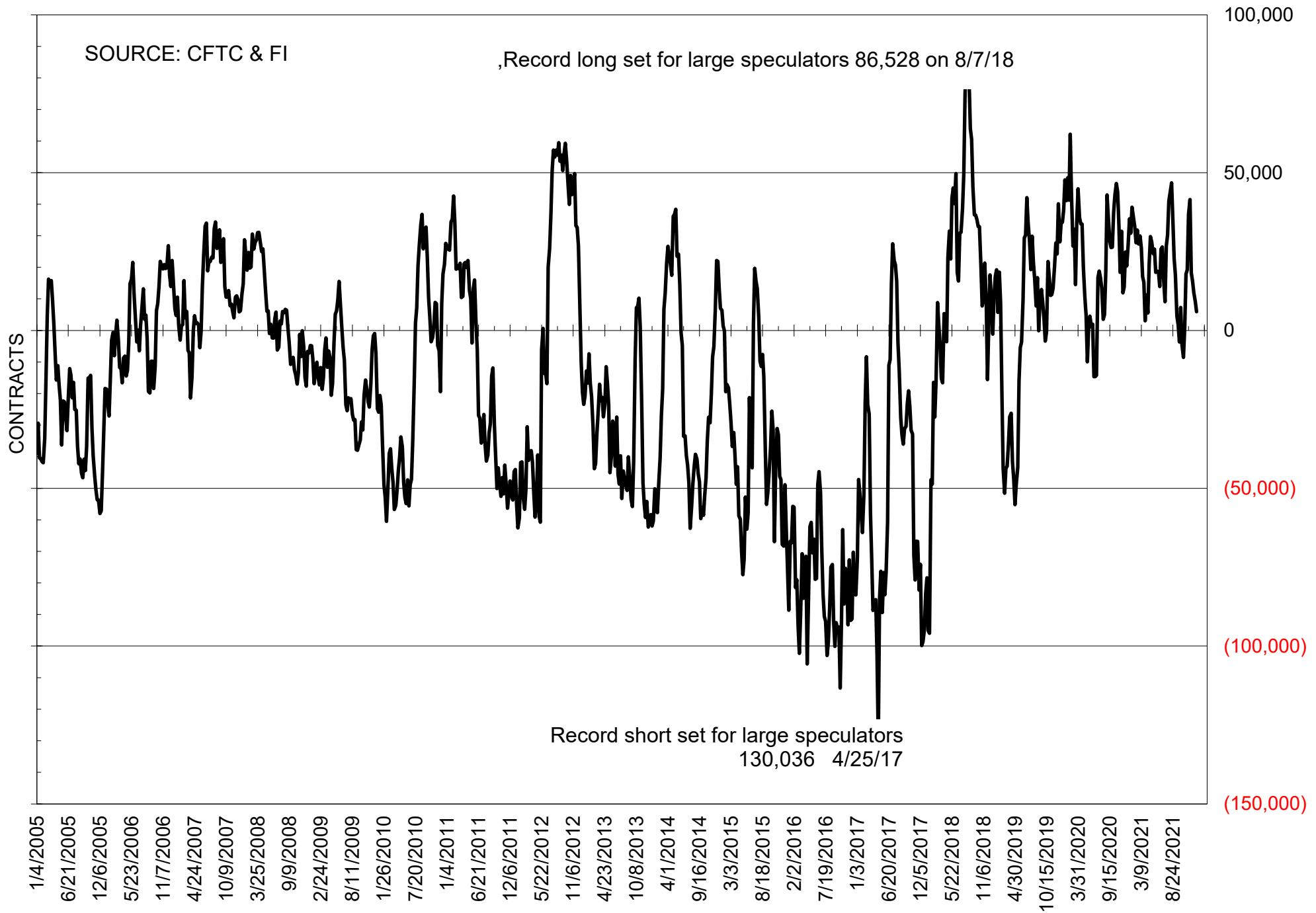
NET POSITION OF FUTURES ONLY LARGE SPECS IN SOYOIL



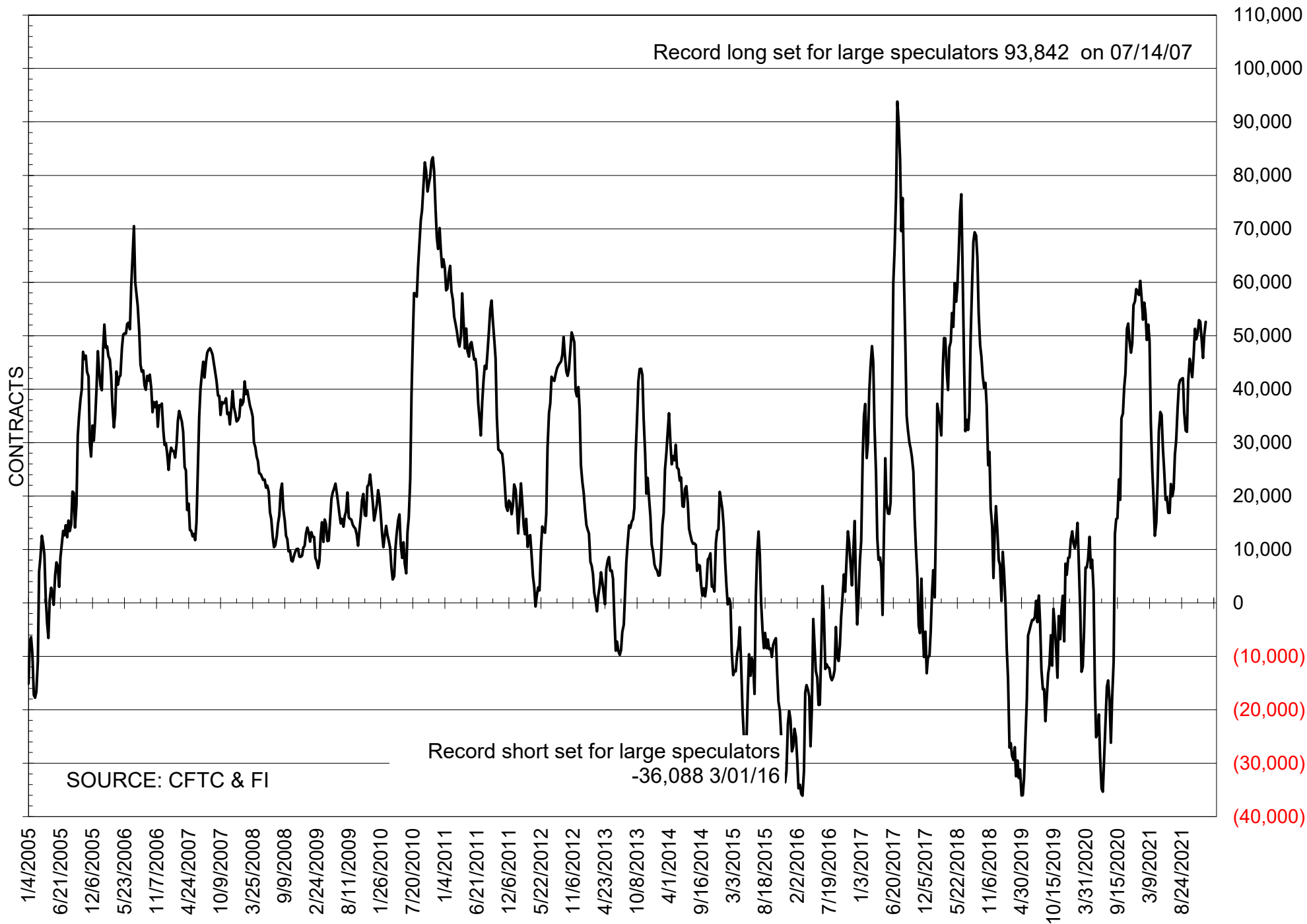
NET POSITION OF LARGE SPECULATORS IN CORN



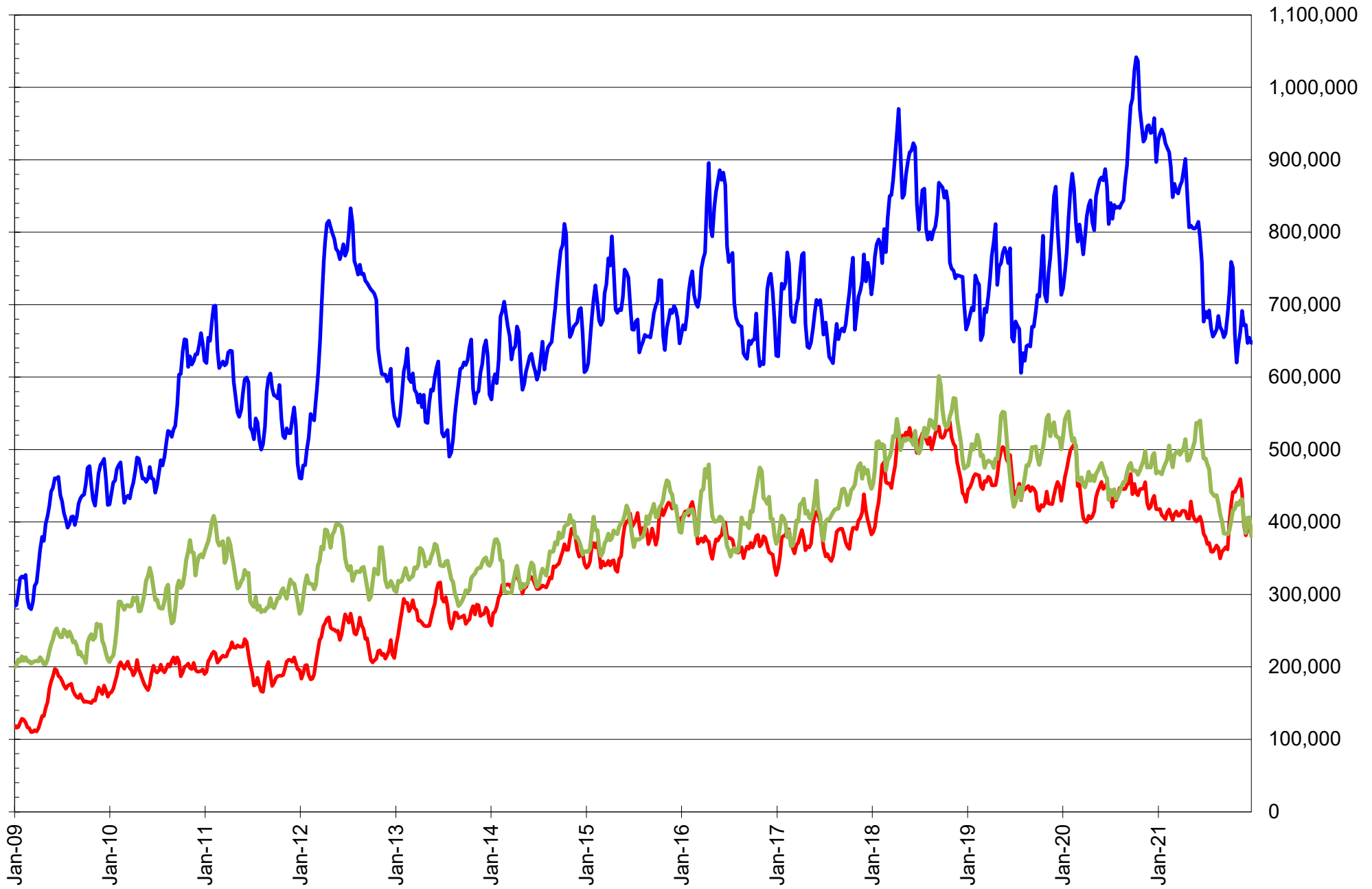
NET POSITION OF FUTURES ONLY LARGE SPECS IN CHICAGO WHEAT



NET POSITION OF LARGE SPECULATORS IN KANSAS CITY WHEAT



TOTAL OPEN INTEREST IN SOYBEANS, MEAL AND OIL, FUTURES ONLY



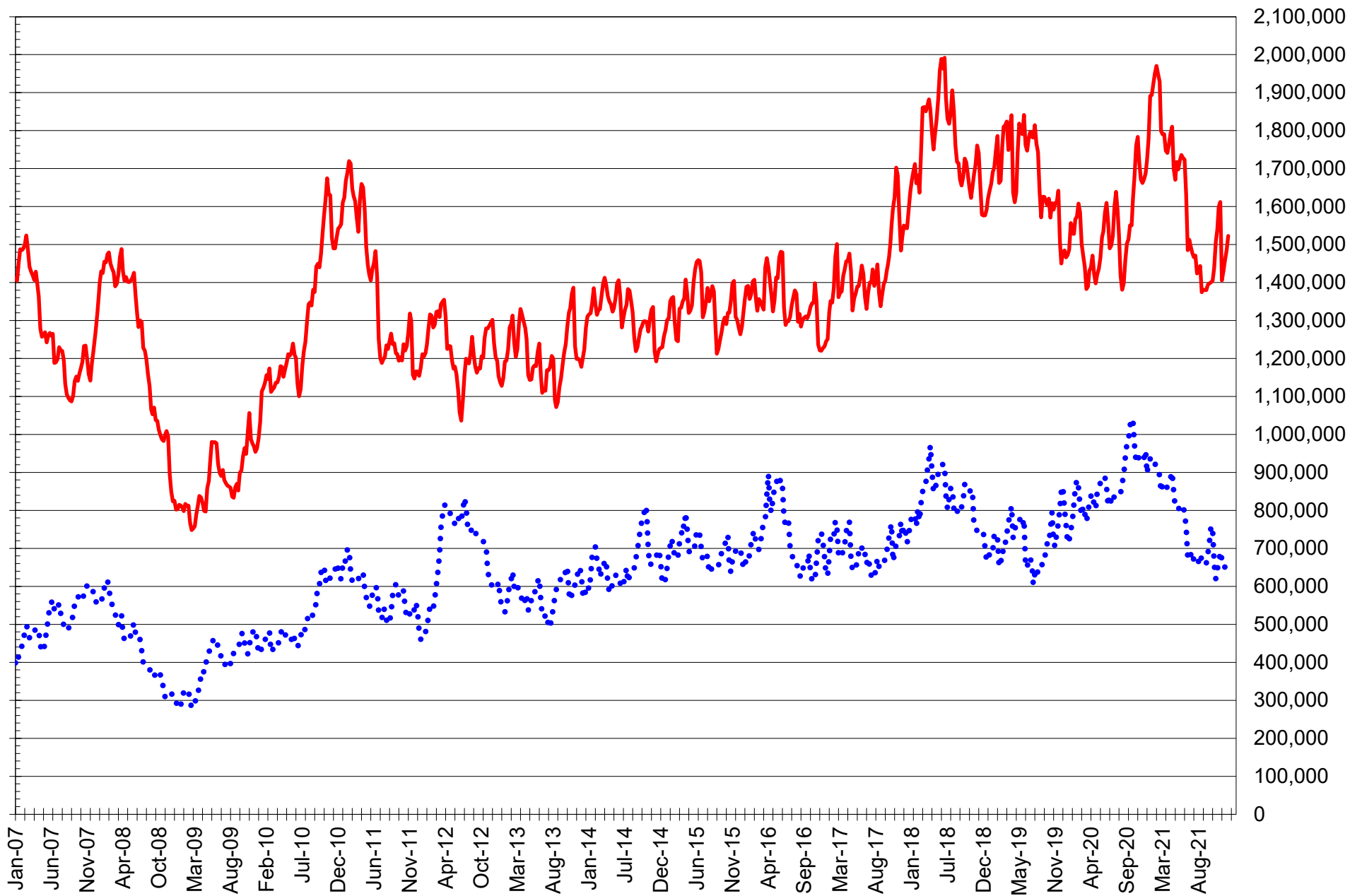
SOURCE: CFTC & FI

— SOYBEANS

— SOYBEAN MEAL

— SOYBEAN OIL

TOTAL OPEN INTEREST IN CORN AND SOYBEANS, FUTURES ONLY



SOURCE: CFTC & FI

— CORN

••••• SOYBEANS

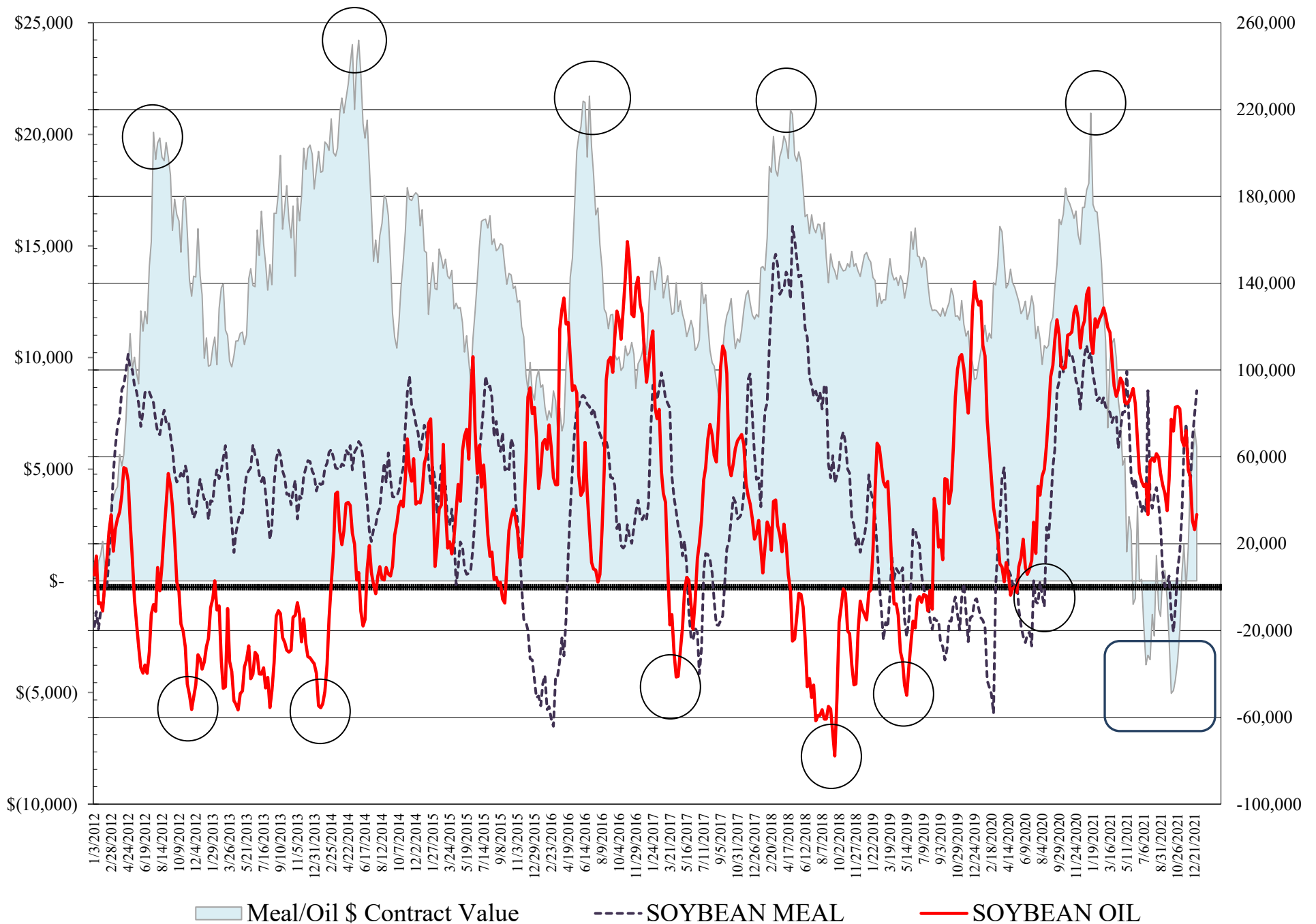
**COMMITMENT OF TRADERS
FUTURES & OPTIONS NET POSITIONS
AS OF 12/28/2021
(IN THOUSAND CONTRACTS)**

	COMMERCIAL				(FUND) NON COMMERCIAL				(SPEC) NON-REPORTABLE			
	28-Dec	21-Dec	14-Dec	7-Dec	28-Dec	21-Dec	14-Dec	7-Dec	28-Dec	21-Dec	14-Dec	7-Dec
WHEAT												
Chicago	7.0	5.8	3.3	-2.8	-0.4	0.8	2.4	9.5	-6.7	-6.6	-5.8	-6.7
Kansas City	-54.0	-51.7	-48.3	-51.2	52.6	48.6	45.2	47.9	1.4	3.1	3.2	3.2
Minneapolis	-23.0	-26.0	-26.3	-26.6	19.1	20.8	21.3	20.5	4.0	5.2	5.0	6.1
All Wheat	-70.0	-71.9	-71.3	-80.6	71.3	70.1	68.9	78.0	-1.3	1.8	2.4	2.6
CORN	-414.1	-400.0	-380.2	-366.9	447.8	432.9	414.8	400.1	-33.7	-32.9	-34.6	-33.2
OATS	-0.1	0.1	-0.2	-0.4	0.7	0.7	0.7	0.7	-0.6	-0.8	-0.5	-0.3
SOYBEANS	-93.5	-69.6	-22.2	-22.5	126.4	101.2	60.4	61.4	-33.0	-31.6	-38.2	-38.9
SOY OIL	-38.3	-26.9	-33.1	-55.1	33.4	26.5	30.6	50.9	4.9	0.4	2.5	4.3
SOY MEAL	-116.3	-104.8	-94.1	-71.2	90.5	79.7	68.2	46.5	25.8	25.2	25.9	24.7

	TOTAL OPEN INTEREST				COMMERCIALS		% HELD BY TRADERS LARGE (FUNDS)		SMALL (NON-REP)	
	28-Dec	21-Dec	14-Dec	7-Dec	LONG	SHORT	LONG	SHORT	LONG	SHORT
WHEAT										
Chicago	433,728	444,789	444,225	440,731	38%	37%	21%	21%	8%	9%
Kansas City	244,520	247,544	239,385	247,516	31%	54%	35%	14%	10%	9%
Minneapolis	77,597	78,648	79,137	79,583	42%	71%	31%	7%	19%	13%
CORN	1,843,102	1,801,189	1,757,032	1,724,182	40%	63%	28%	4%	10%	11%
OATS	4,486	4,634	4,955	4,827						
SOYBEANS	767,439	789,405	767,185	791,580	48%	61%	21%	5%	8%	12%
SOY OIL	419,844	456,215	451,435	425,461	54%	63%	19%	11%	7%	6%
SOY MEAL	430,303	452,464	434,693	418,151	45%	72%	25%	4%	12%	6%

SOURCE: CFTC & FI

NET POSITION FUTURES AND OPTIONS OF LARGE SPECULATORS IN SOYBEAN MEAL AND SOYBEAN OIL

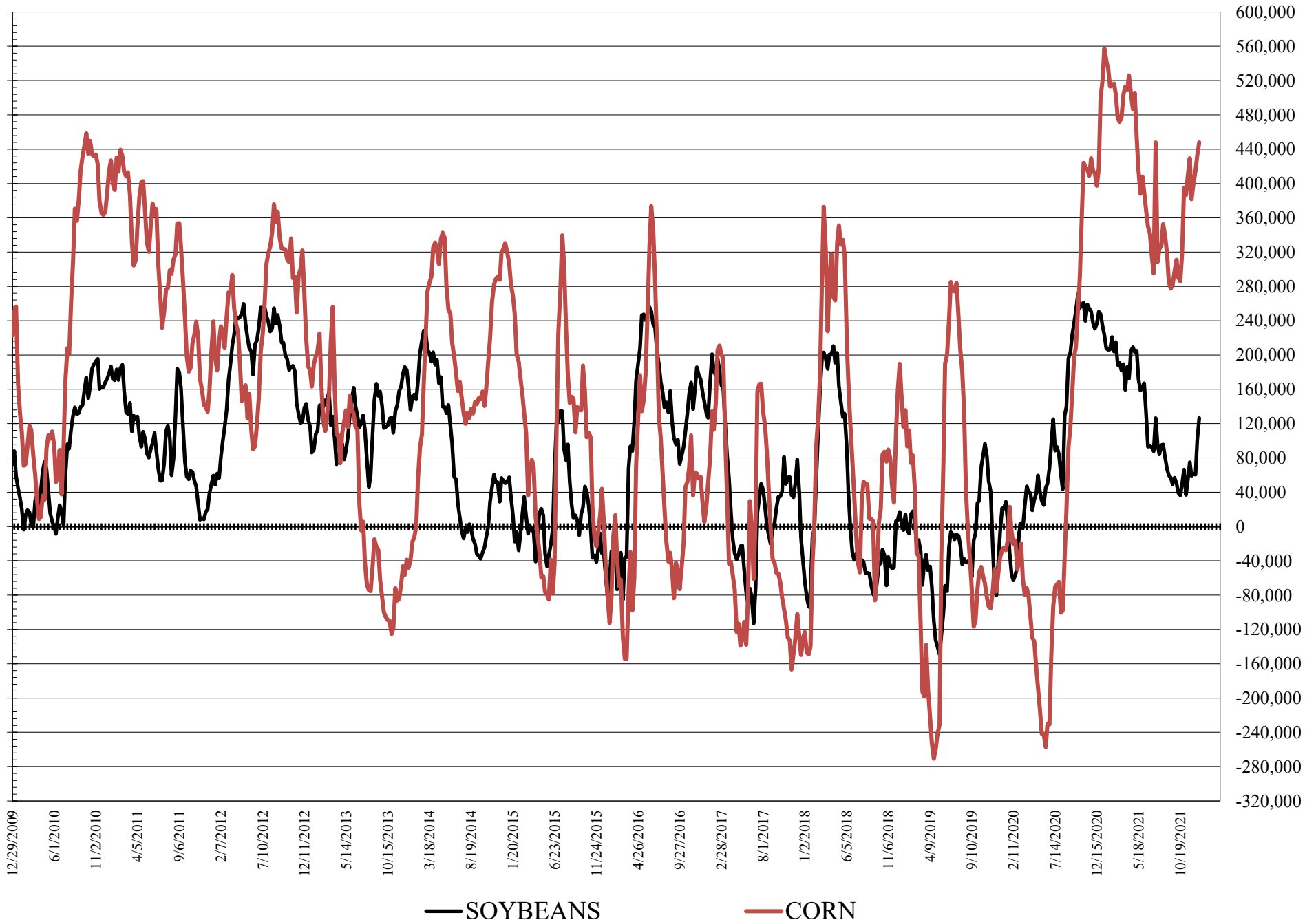


Meal/Oil \$ Contract Value

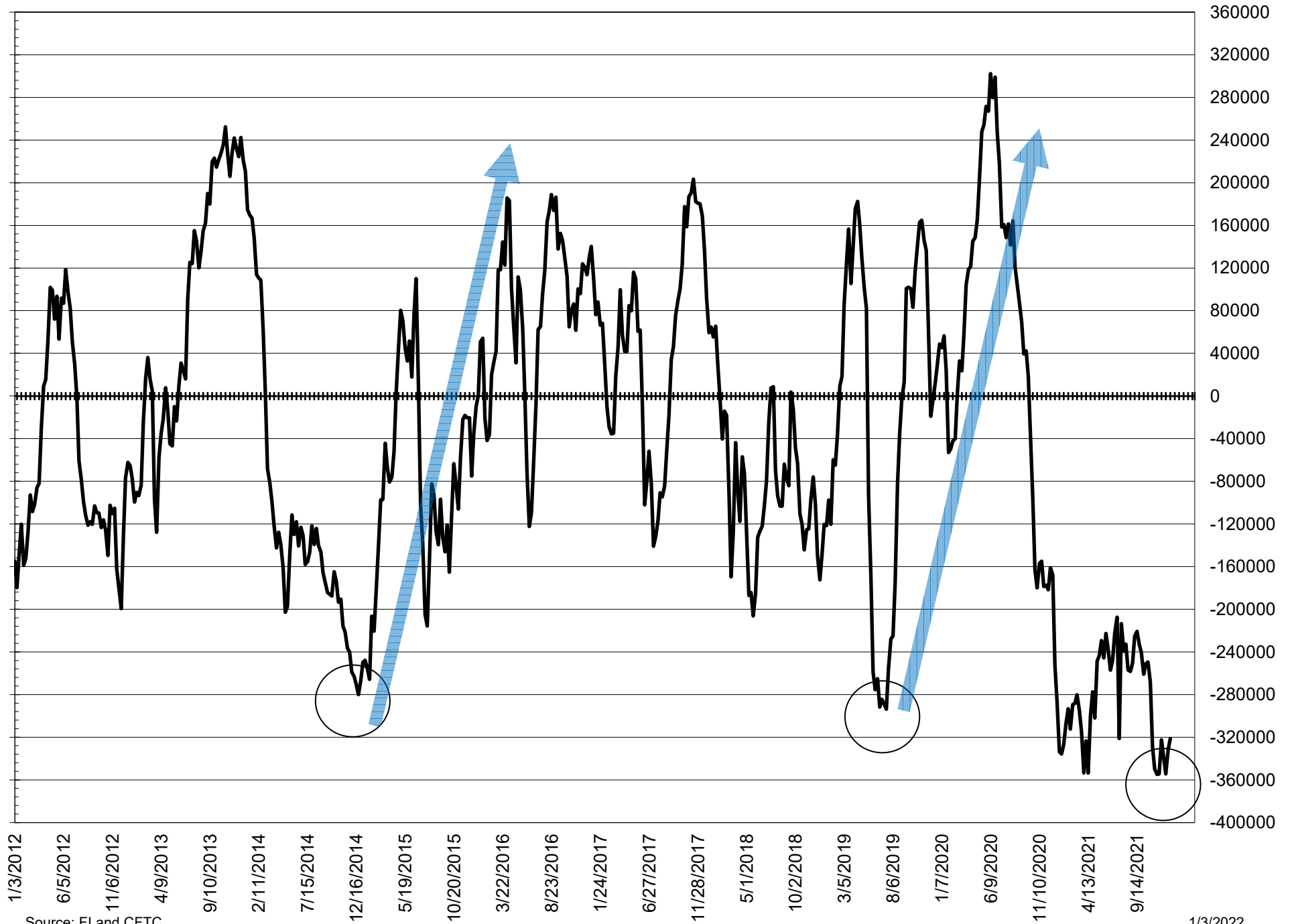
----- SOYBEAN MEAL

----- SOYBEAN OIL

NET POSITION FUTURES AND OPTIONS OF LARGE SPECULATORS IN SOYBEANS AND CORN



NET POSITION FUTURES AND OPTIONS SPREAD OF LARGE SPECULATORS IN SOYBEANS MINUS CORN



Source: FI and CFTC

1/3/2022

**DISAGGREGATED COMMITMENT OF TRADERS
FUTURES ONLY NET POSITIONS
AS OF 12/28/2021
(IN THOUSAND CONTRACTS)**

	PRODUCER / MERCHANT / PROCESSOR / USER				(INDEX/ETF) SWAP DEALERS				(CTA/CPO/OTHER UNREGISTERED) MANAGED MONEY			
	28-Dec	21-Dec	14-Dec	7-Dec	28-Dec	21-Dec	14-Dec	7-Dec	28-Dec	21-Dec	14-Dec	7-Dec
WHEAT												
Chicago	(73.4)	(73.6)	(74.9)	(78.4)	75.0	72.0	69.7	70.0	(14.2)	(12.7)	(9.5)	(1.2)
Kansas City	(80.3)	(79.3)	(76.1)	(80.9)	26.5	26.4	27.3	28.7	58.6	57.9	56.9	59.3
Minneapolis	(25.3)	(28.3)	(28.3)	(28.6)	1.2	1.3	1.1	1.1	12.0	13.1	13.1	12.4
All Wheat	(179.1)	(181.1)	(179.3)	(187.9)	102.7	99.7	98.1	99.8	56.4	58.3	60.5	70.5
CORN	(682.8)	(672.0)	(655.3)	(641.1)	271.0	270.7	273.4	273.3	362.5	350.9	335.5	320.9
OATS	(0.1)	0.1	(0.2)	(0.5)	0.0	(0.0)	(0.0)	0.0	0.6	0.6	0.6	0.5
SOYBEANS	(230.5)	(210.1)	(166.3)	(164.4)	137.4	137.8	139.2	141.7	99.1	74.0	40.5	36.5
SOY OIL	(139.2)	(134.0)	(138.2)	(160.8)	94.7	94.7	93.9	95.3	43.9	38.5	44.7	58.3
SOY MEAL	(202.9)	(190.9)	(182.5)	(163.7)	88.7	89.5	88.7	89.4	60.8	50.6	40.7	28.0

	Managed % of OI			
Chicago W	-4%	-4%	-3%	0%
Corn	24%	24%	23%	22%

	TOTAL OPEN INTEREST				OTHER REPORTABLE				NON REPORTABLE			
	28-Dec	21-Dec	14-Dec	7-Dec	28-Dec	21-Dec	14-Dec	7-Dec	28-Dec	21-Dec	14-Dec	7-Dec
WHEAT												
Chicago	356,439	357,381	361,469	359,186	20.1	21.9	21.5	16.8	(7.5)	(7.5)	(6.8)	(7.3)
Kansas City	220,413	216,719	215,046	221,831	(6.0)	(7.9)	(11.1)	(10.1)	1.3	2.8	2.9	3.1
Minneapolis	73,766	74,243	74,886	75,116	8.4	8.9	9.3	9.3	3.7	5.0	4.8	5.8
All Wheat	650,618	648,343	651,401	656,133	22.5	22.9	19.8	15.9	(2.5)	0.2	0.9	1.6
CORN	1,522,692	1,485,412	1,459,289	1,430,401	95.6	94.4	91.1	89.9	(46.4)	(44.0)	(44.7)	(42.9)
OATS	4,383	4,532	4,854	4,732	0.1	0.1	0.1	0.2	(0.6)	(0.8)	(0.5)	(0.3)
SOYBEANS	647,225	654,460	647,243	672,116	26.2	28.9	22.8	23.2	(32.2)	(30.5)	(36.1)	(36.9)
SOY OIL	380,321	406,225	405,768	384,956	(3.3)	1.9	(1.5)	4.1	3.9	(1.1)	1.2	3.1
SOY MEAL	388,667	400,752	389,271	381,626	30.9	29.5	30.7	24.6	22.4	21.3	22.4	21.7

SOURCE: CFTC & FI

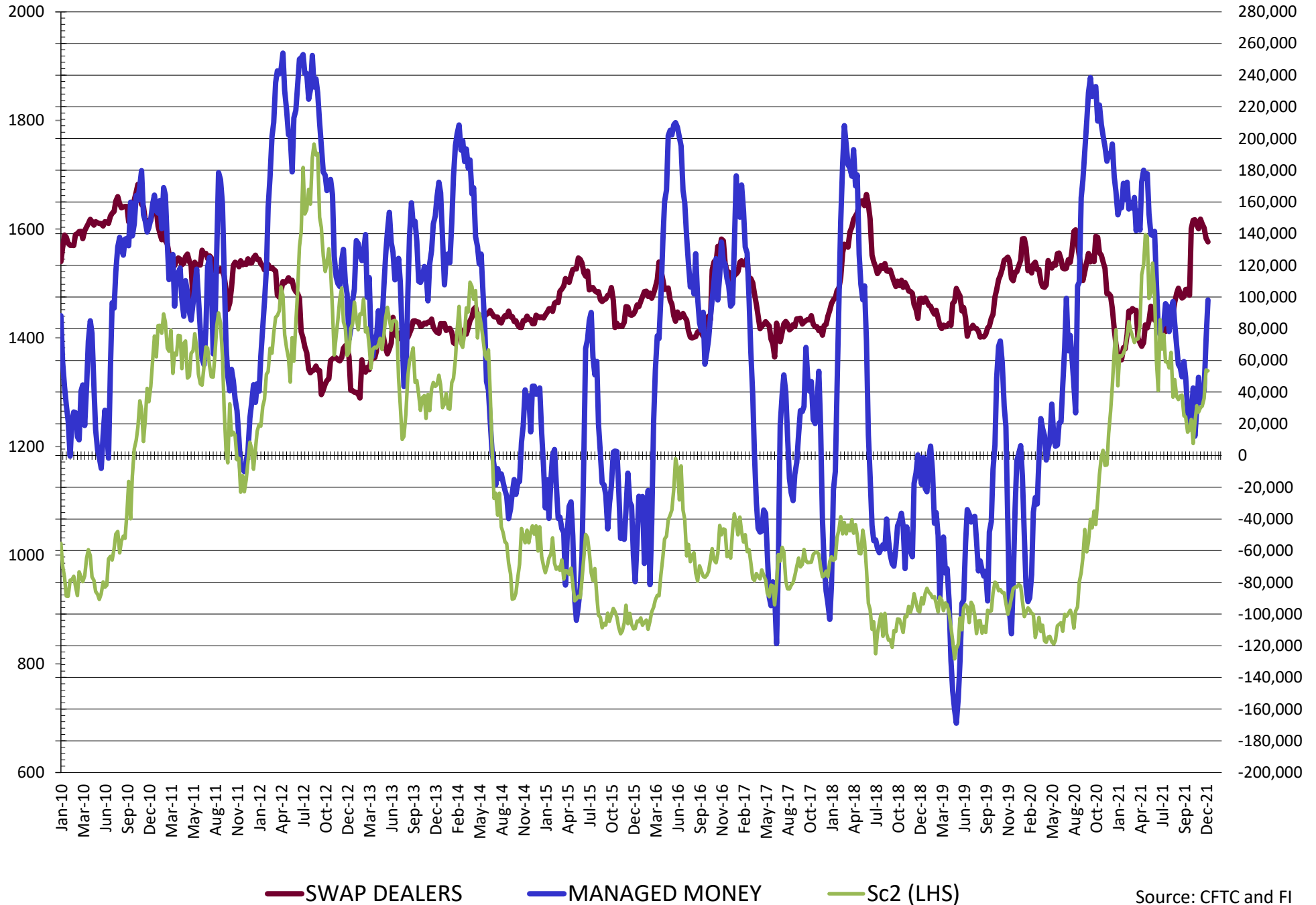
**DISAGGREGATED COMMITMENT OF TRADERS
FUTURES & OPTIONS NET POSITIONS
AS OF 12/28/2021
(IN THOUSAND CONTRACTS)**

	PRODUCER / MERCHANT / PROCESSOR / USER				(INDEX/ETF) SWAP DEALERS				(CTA/CPO/OTHER UNREGISTERED) MANAGED MONEY			
	28-Dec	21-Dec	14-Dec	7-Dec	28-Dec	21-Dec	14-Dec	7-Dec	28-Dec	21-Dec	14-Dec	7-Dec
	WHEAT											
Chicago	(66.5)	(64.4)	(64.8)	(70.6)	73.5	70.2	68.2	67.7	(11.8)	(11.0)	(7.3)	0.7
Kansas City	(79.6)	(77.3)	(75.0)	(79.3)	25.6	25.6	26.7	28.2	59.4	58.8	57.2	59.6
Minneapolis	(24.2)	(27.2)	(27.3)	(27.6)	1.1	1.2	1.0	1.1	12.0	13.2	13.2	12.5
All Wheat	(170.2)	(168.9)	(167.2)	(177.5)	100.2	97.0	95.9	96.9	59.7	61.0	63.1	72.8
CORN	(674.3)	(662.9)	(648.3)	(635.0)	260.2	262.9	268.1	268.1	373.3	360.4	346.0	332.5
OATS	(0.1)	0.1	(0.2)	(0.5)	0.0	(0.0)	(0.0)	0.0	0.6	0.6	0.6	0.5
SOYBEANS	(228.2)	(206.7)	(165.8)	(168.6)	134.8	137.1	143.6	146.1	98.1	72.9	41.0	37.9
SOY OIL	(132.4)	(121.6)	(127.2)	(151.0)	94.1	94.7	94.1	95.8	45.4	39.1	44.8	58.8
SOY MEAL	(203.3)	(192.3)	(181.5)	(160.5)	87.0	87.5	87.4	89.3	61.2	50.6	40.5	27.9

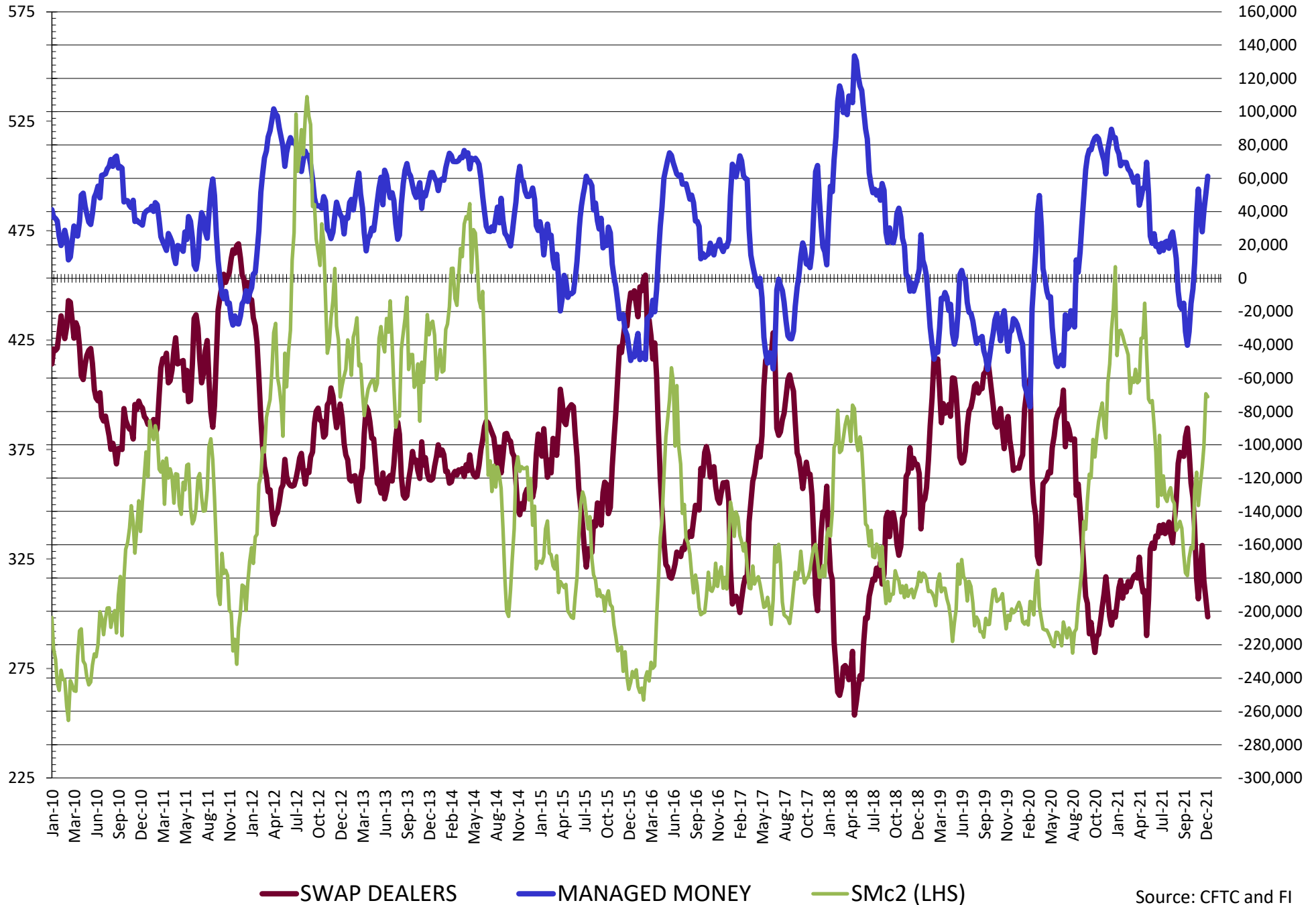
	TOTAL OPEN INTEREST				OTHER REPORTABLE				NON REPORTABLE			
	28-Dec	21-Dec	14-Dec	7-Dec	28-Dec	21-Dec	14-Dec	7-Dec	28-Dec	21-Dec	14-Dec	7-Dec
	WHEAT											
Chicago	433,728	444,789	444,225	440,731	11.4	11.8	9.7	8.8	(6.7)	(6.6)	(5.8)	(6.7)
Kansas City	244,520	247,544	239,385	247,516	(6.8)	(10.2)	(12.0)	(11.6)	1.4	3.1	3.2	3.2
Minneapolis	77,597	78,648	79,137	79,583	7.0	7.6	8.1	8.0	4.0	5.2	5.0	6.1
All Wheat	755,845	770,981	762,747	767,830	11.7	9.2	5.9	5.2	(1.3)	1.8	2.4	2.6
CORN	1,843,102	1,801,189	1,757,032	1,724,182	74.4	72.5	68.8	67.6	(33.7)	(32.9)	(32.9)	(32.9)
OATS	4,486	4,634	4,955	4,827	0.1	0.1	0.1	0.2	(0.6)	(0.8)	(0.5)	(0.3)
SOYBEANS	767,439	789,405	767,185	791,580	28.4	28.3	19.5	23.5	(33.0)	(31.6)	(38.2)	(38.9)
SOY OIL	419,844	456,215	451,435	425,461	(11.9)	(12.5)	(14.2)	(8.0)	4.9	0.4	2.5	4.3
SOY MEAL	430,303	452,464	434,693	418,151	29.4	29.1	27.6	18.6	25.8	25.2	25.9	24.7

SOURCE: CFTC & FI

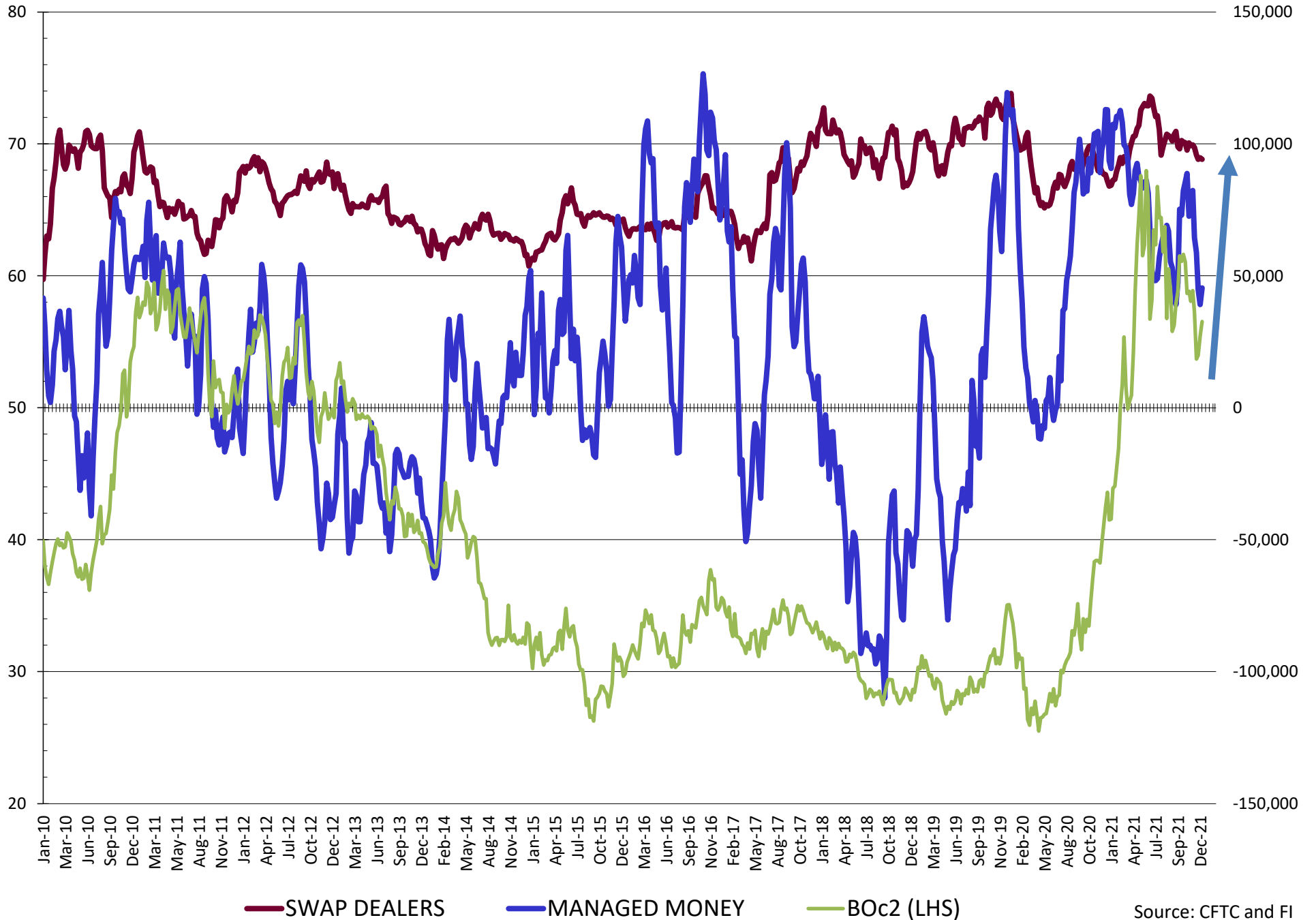
NET POSITION FUTURES AND OPTIONS OF SWAP AND MANAGED FUNDS IN SOYBEANS



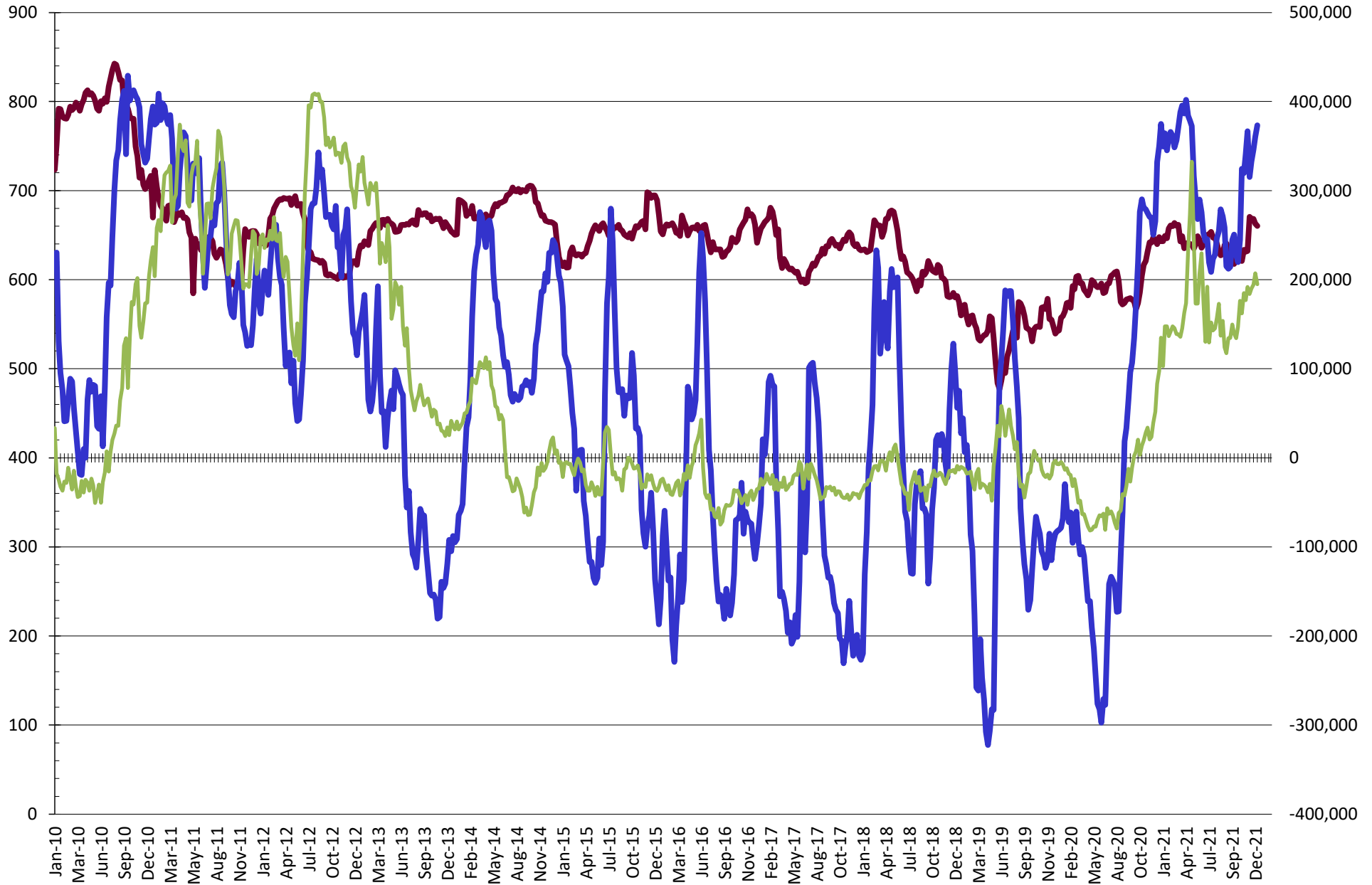
NET POSITION FUTURES AND OPTIONS OF SWAP AND MANAGED FUNDS IN SOYBEAN MEAL



NET POSITION FUTURES AND OPTIONS OF SWAP AND MANAGED FUNDS IN SOYBEAN OIL

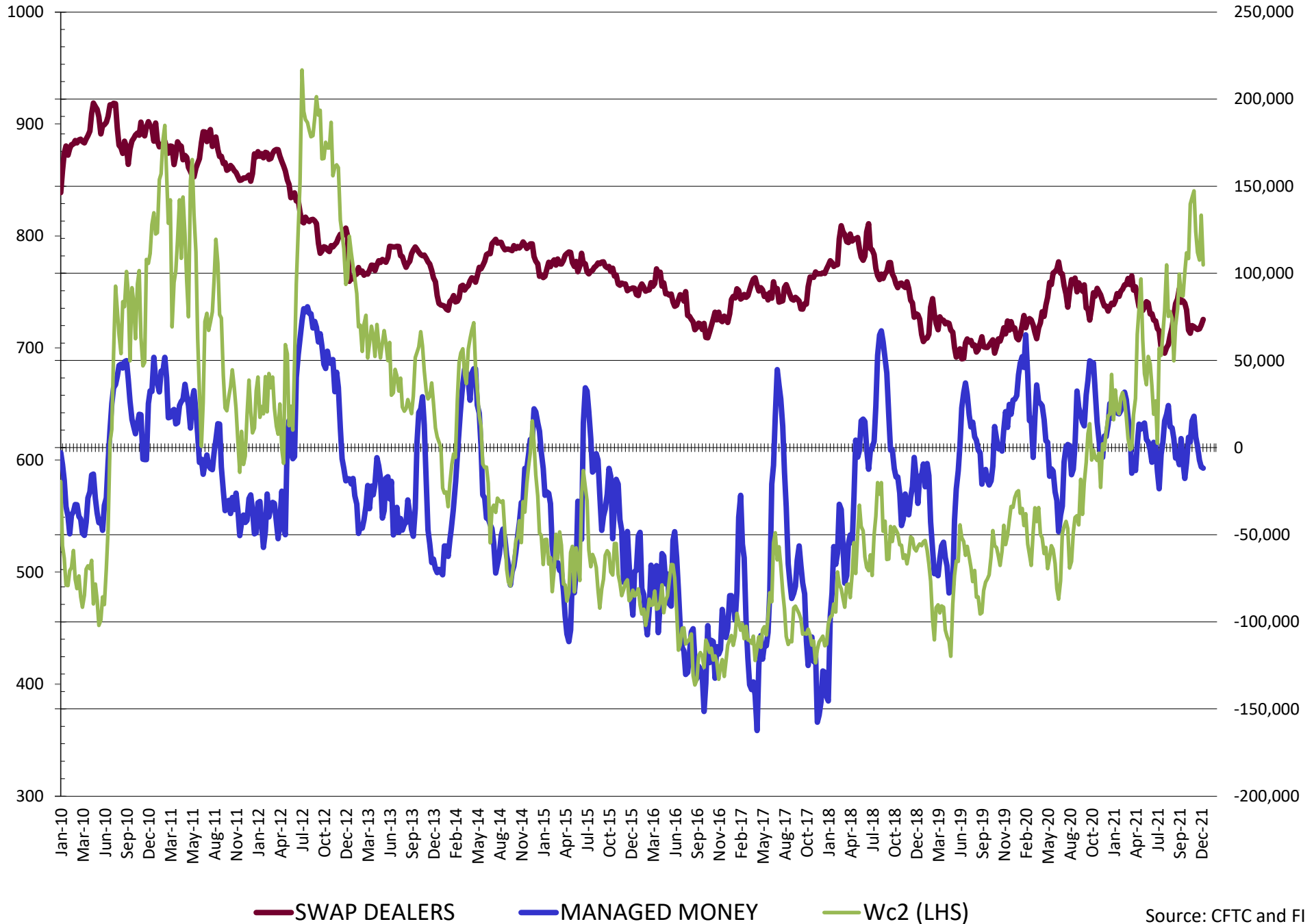


NET POSITION FUTURES AND OPTIONS OF SWAP AND MANAGED FUNDS IN CORN

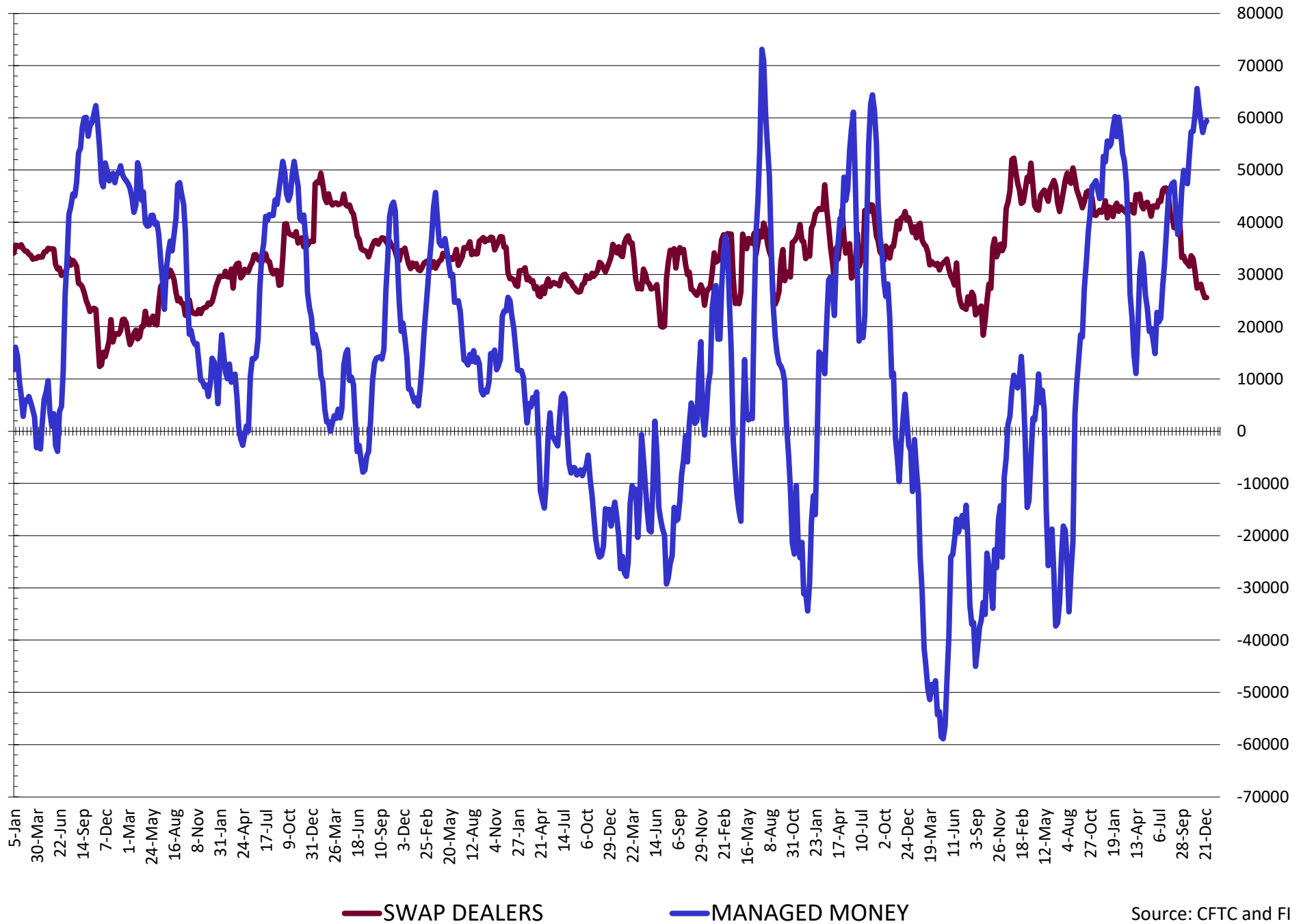


— SWAP DEALERS
 — MANAGED MONEY
 — Cc2 (LHS)

NET POSITION FUTURES AND OPTIONS OF SWAP AND MANAGED FUNDS IN CHICAGO WHEAT

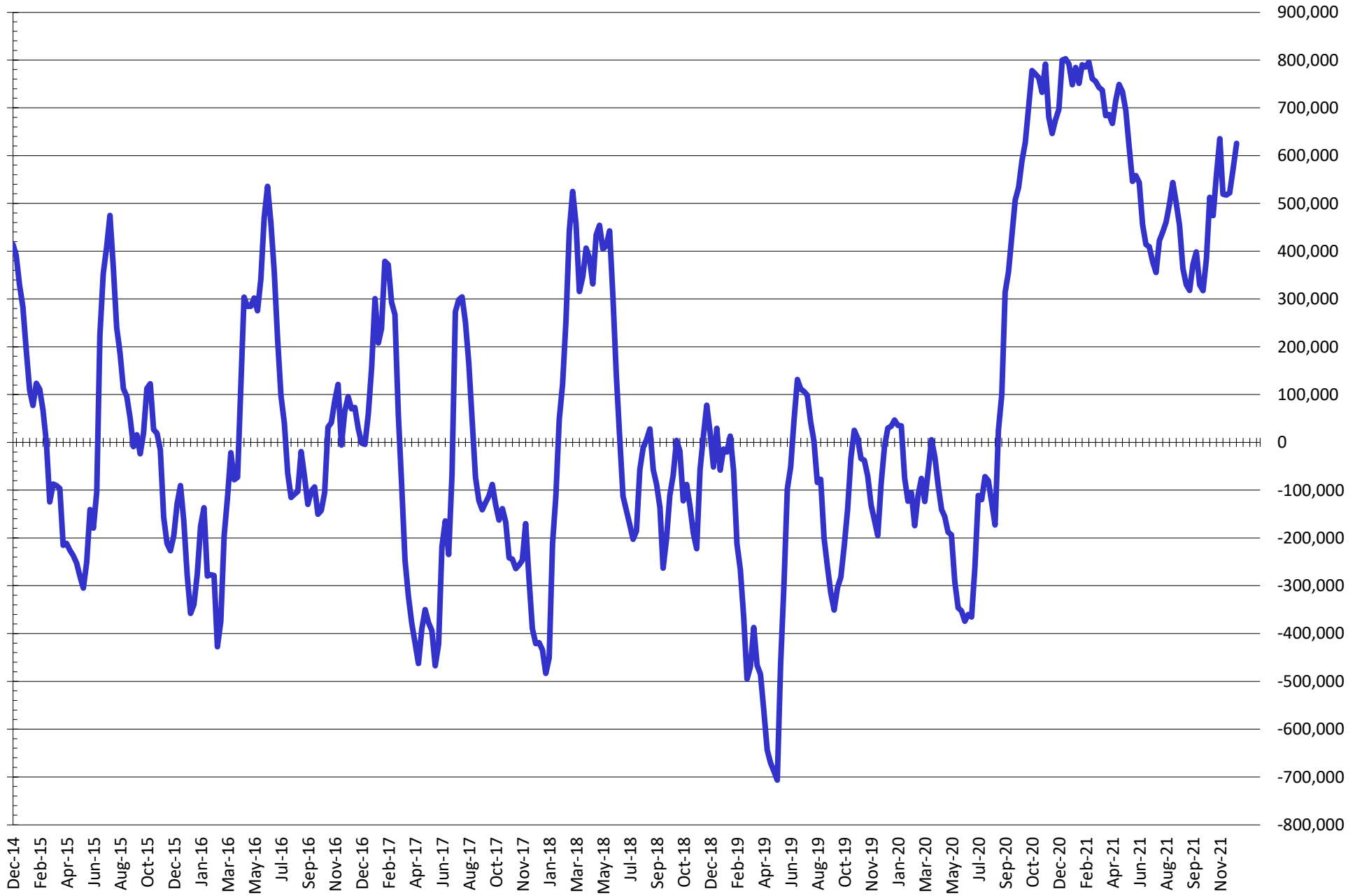


NET POSITION FUTURES AND OPTIONS OF SWAP AND MANAGED FUNDS IN KANSAS WHEAT



Source: CFTC and FI
1/3/2022

NET POSITION FUTURES AND OPTIONS OF SWAP AND MANAGED FUNDS IN COMBINED SRW, HRW, CORN, SOYBEANS, SOYMEAL AND SOYOIL



— Net Managed Money

Source: CFTC and FI
1/3/2022

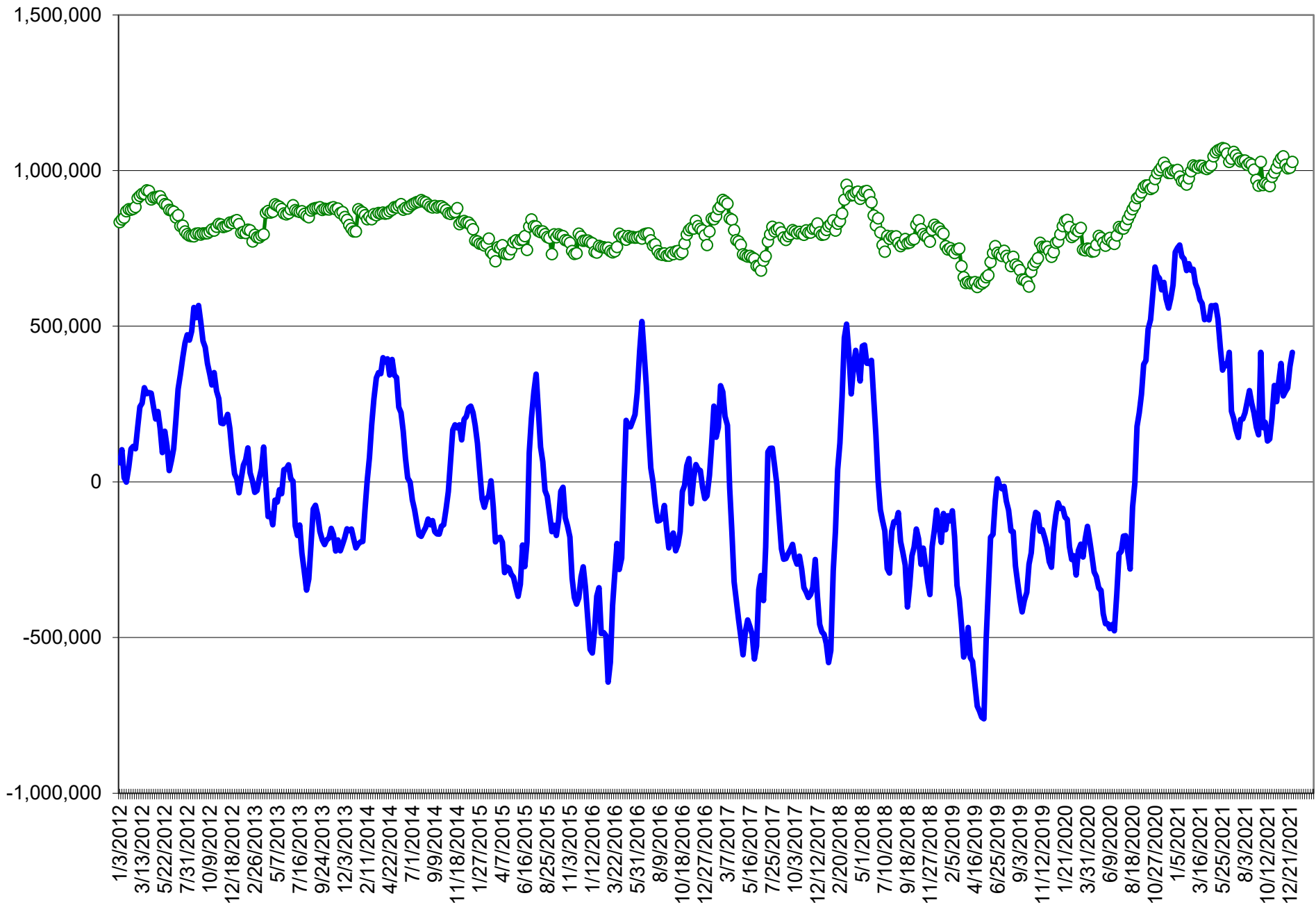
COMMITMENT OF TRADERS
FUTURES & OPTIONS NET POSITIONS (INDEX BROKEN OUT)
AS OF 12/28/2021
(IN THOUSAND CONTRACTS)

	COMMERCIAL				(FUND) NON COMMERCIAL				(SPEC) NON-REPORTABLE			
	28-Dec	21-Dec	14-Dec	7-Dec	28-Dec	21-Dec	14-Dec	7-Dec	28-Dec	21-Dec	14-Dec	7-Dec
	WHEAT											
Chicago	(84.2)	(81.9)	(81.6)	(88.6)	(30.5)	(28.1)	(26.8)	(21.4)	(6.7)	(6.6)	(5.8)	(6.7)
Kansas City	(92.7)	(90.3)	(88.0)	(91.3)	29.7	29.8	27.3	29.2	1.4	3.1	3.2	3.2
Minneapolis	-	-	-	-	-	-	-	-	-	-	-	-
All Wheat	(177.0)	(172.2)	(169.6)	(179.9)	(0.8)	1.7	0.4	7.8	(5.3)	(3.5)	(2.6)	(3.4)
CORN	(683.3)	(669.8)	(648.6)	(635.6)	282.8	275.0	256.4	243.0	(33.7)	(32.9)	(34.6)	(33.2)
OATS	-	-	-	-	-	-	-	-	-	-	-	-
SOYBEANS	(224.9)	(201.2)	(155.8)	(157.8)	80.7	57.2	16.9	13.5	(33.0)	(31.6)	(38.2)	(38.9)
SOY OIL	(124.7)	(113.1)	(119.4)	(142.4)	1.6	(5.1)	(2.1)	17.5	4.9	0.4	2.5	4.3
SOY MEAL	(192.6)	(180.7)	(168.7)	(146.7)	51.8	41.4	30.2	8.7	25.8	25.2	25.9	24.7

	TOTAL OPEN INTEREST				(INDEX) COMMERCIAL INDEX TRADERS				(INDEX) % NET OF TOTAL OPEN INTEREST			
	28-Dec	21-Dec	14-Dec	7-Dec	28-Dec	21-Dec	14-Dec	7-Dec	28-Dec	21-Dec	14-Dec	7-Dec
	WHEAT											
Chicago	433,728	444,789	444,225	440,731	121.4	116.6	114.2	116.7	28.0%	26.2%	25.7%	26.5%
Kansas City	244,520	247,544	239,385	247,516	61.7	57.4	57.6	58.8	25.2%	23.2%	24.1%	23.8%
Minneapolis	-	-	-	-	-	-	-	-	-	-	-	-
All Wheat	678,248	692,333	683,610	688,247	183.1	174.0	171.8	175.5	27.0%	25.1%	25.1%	25.5%
CORN	1,843,102	1,801,189	1,757,032	1,724,182	434.2	427.7	426.8	425.8	23.6%	23.7%	24.3%	24.7%
OATS	-	-	-	-	-	-	-	-	-	-	-	-
SOYBEANS	767,439	789,405	767,185	791,580	177.1	175.5	177.1	183.3	23.1%	22.2%	23.1%	23.2%
SOY OIL	419,844	456,215	451,435	425,461	118.3	117.8	119.0	120.6	28.2%	25.8%	26.4%	28.4%
SOY MEAL	430,303	452,464	434,693	418,151	115.0	114.2	112.5	113.2	26.7%	25.2%	25.9%	27.1%

SOURCE: CFTC & FI

NET POSITION FUTURES AND OPTIONS OF SPECULATORS AND INDEX FUNDS IN COMBINED SRW, HRW, CORN, SOYBEANS, SOYMEAL AND SOYOIL



Source: CFTC and FI

○ Net Index

— Net Speculator

Traditional Daily Estimate of Funds 12/28/21

	(Neg)-"Short"	Pos-"Long"			
Actual less Est.	4.9	(2.6)	2.8	(2.4)	(8.8)
	Corn	Bean	Chi. Wheat	Meal	Oil
Act.	458.2	125.3	5.9	91.7	40.6
29-Dec	1.0	0.0	1.0	(1.0)	1.0
30-Dec	(10.0)	(12.0)	(3.0)	(3.0)	(4.0)
31-Dec	(2.0)	1.0	(4.0)	(3.0)	1.0
3-Jan	(5.0)	7.0	(6.0)	6.0	0.0
4-Jan					
FI Est. of Futures Only 12/28/21	442.2	121.3	(6.1)	90.7	38.6
FI Est. Futures & Options	431.8	122.5	(12.4)	89.5	31.4
Futures only record long "Traditional Funds"	547.7 1/26/2021	280.9 11/10/2020	86.5 8/7/2018	167.5 5/1/2018	160.2 11/1/2016
Futures only record short	(235.0) 6/9/2020	(118.3) 4/30/2019	(130.0) 4/25/2017	(49.5) 3/1/2016	(69.8) 9/18/2018
Futures and options record net long	557.6 1/12/2021	270.9 10/6/2020	64.8 8/7/2012	132.1 5/1/2018	159.2 1/1/2016
Futures and options record net short	(270.6) 4/26/2019	(132.0) 4/30/2019	(143.3) 4/25/2017	(64.1) 3/1/2016	(77.8) 9/18/2018

Managed Money Daily Estimate of Funds 12/28/21

	Corn	Bean	Chi. Wheat	Meal	Oil
Latest CFTC Fut. Only	362.5	99.1	(14.2)	60.8	43.9
Latest CFTC F&O	373.3	98.1	(11.8)	61.2	45.4
FI Est. Managed Fut. Only	347	95	(26)	60	42
FI Est. Managed Money F&O	357	94	(24)	60	43

Index Funds Latest Positions (as of last Tuesday)

Index Futures & Options	434.2	177.1	121.4	NA	118.3
Change From Previous Week	6.5	1.6	4.9	NA	0.4

Source: Reuters, CFTC & FI (FI est. are noted with latest date)

Disclaimer

TO CLIENTS/PROSPECTS OF FUTURES INTERNATIONAL, SEE RISK DISCLOSURE BELOW:

THIS COMMUNICATION IS CONVEYED AS A SOLICITATION FOR ENTERING INTO A DERIVATIVES TRANSACTION.

Any trading recommendations and market or other information to Customer by Futures International (FI), although based upon information obtained from sources believed by FI to be reliable may not be accurate and may be changed without notice to customer. FI makes no guarantee as to the accuracy or completeness of any of the information or recommendations furnished to Customer. Customer understands that FI, its managers, employees and/or affiliates may have a position in commodity futures, options or other derivatives which may not be consistent with the recommendations furnished by FI to Customer.

The risk of trading futures and options and other derivatives involves a substantial risk of loss and is not suitable for all persons. In purchasing an option, the risk is limited to the premium paid, and all commissions and fees involved with the trade. When an option is shorted or written, the writer of the option has unlimited risk with respect to the option written. The use of options strategies such as a straddles and strangles involve multiple option positions and may substantially increase the amount of commissions and fees paid to execute the strategy. Option prices do not necessarily move in tandem with cash or futures prices. Each person must consider whether a particular trade, combination of trades or strategy is suitable for that person's financial means and objectives.

This material may include discussions of seasonal patterns, however, futures prices have already factored in the seasonal aspects of supply and demand, and seasonal patterns are no indication of future market trends. Finally, past performance is not indicative of future results.

This communication may contain links to third party websites which are not under the control of FI and FI is not responsible for their content. Products and services are offered only in jurisdictions where solicitation and sale are lawful, and in accordance with applicable laws and regulations in each such jurisdiction.