

### Page Menu

[Short-term Weather Model Outlooks](#)

[Lower 48 Component Models](#)

[Regional S/D Models Storage Projection](#)

[Weather Model Storage Projection](#)

[Supply – Demand Trends](#)

[Nat Gas Options Volume and Open Interest](#)

[Nat Gas Futures Open Interest](#)

[Price Summary](#)

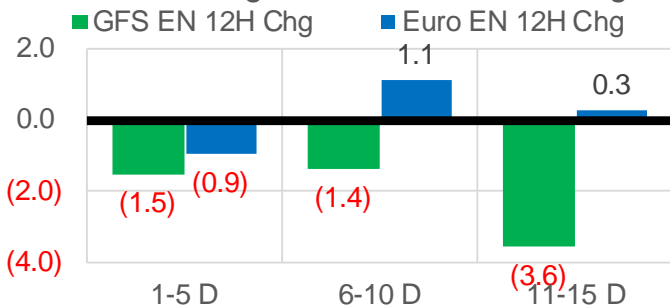
	Current	Δ from YD	Δ from 7D Avg
Nat Gas Prompt	\$ 5.06	▼ \$ (0.38)	▼ \$ (0.11)

	Current	Δ from YD	Δ from 7D Avg
WTI Prompt	\$ 71.70	▲ \$ 3.55	▼ \$ (2.1)

	Current	Δ from YD	Δ from 7D Avg
Brent Prompt	\$ 76.13	▲ \$ 3.41	▼ \$ (1.7)

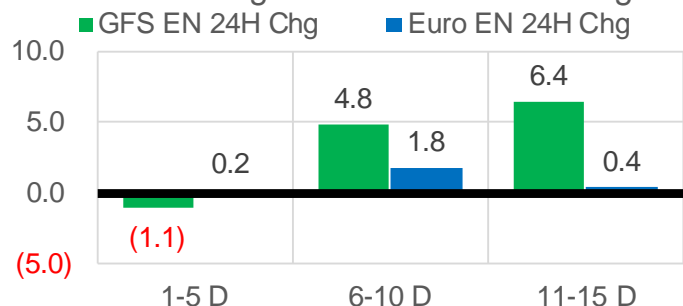
### Vs. 12H Ago

L48 Region - 00z TDD vs 12H Ago



### Vs. 24H Ago

L48 Region - 00z TDD vs 24H Ago



	Current	Δ from YD	Δ from 7D Avg
US Dry Production	97.7	▼ -0.28	▲ 0.21

	Current	Δ from YD	Δ from 7D Avg
US Power Burns	28.2	▲ 0.05	▼ -0.49

	Current	Δ from YD	Δ from 7D Avg
US ResComm	34.4	▲ 0.54	▼ -0.49

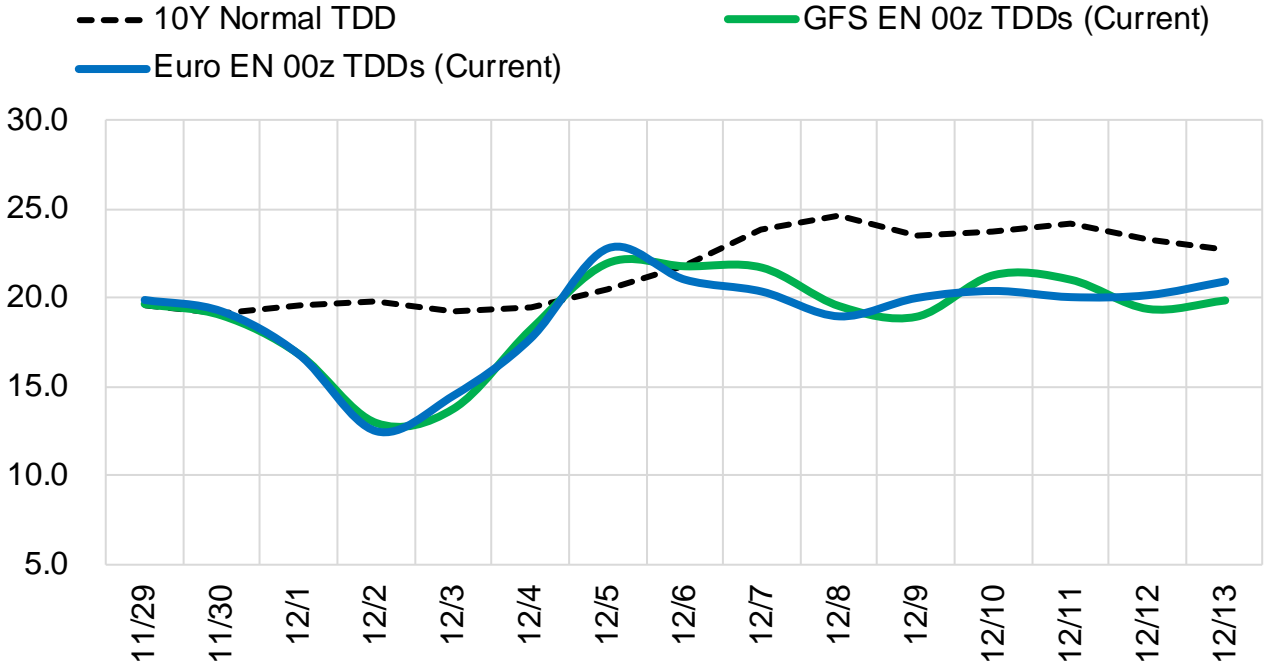
	Current	Δ from YD	Δ from 7D Avg
Canadian Imports	5.4	▼ -0.32	▼ -0.23

	Current	Δ from YD	Δ from 7D Avg
Net LNG Exports	11.9	▼ -0.48	▼ -0.07

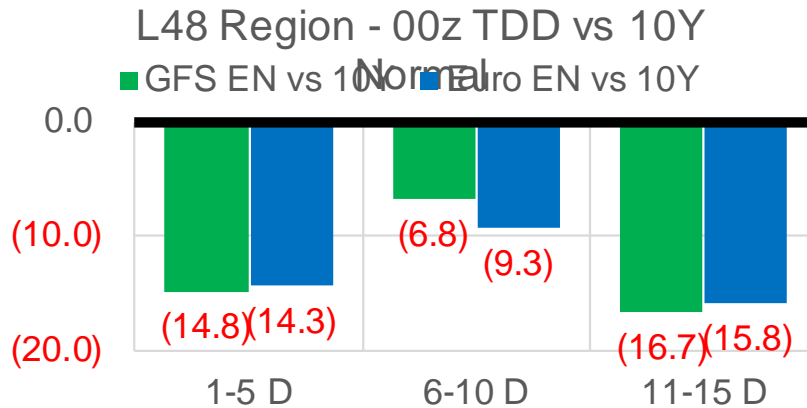
	Current	Δ from YD	Δ from 7D Avg
Mexican Exports	5.9	▲ 0.02	▼ -0.19

## Short-term Weather Model Outlooks (00z)

### L48 Region



### Vs. 10Y Normal



Source: WSI , Bloomberg

## Lower 48 Component Models

### Daily Balances

	23-Nov	24-Nov	25-Nov	26-Nov	27-Nov	28-Nov	29-Nov	DoD	vs. 7D
<b>Lower 48 Dry Production</b>	<b>96.9</b>	<b>97.5</b>	<b>97.7</b>	<b>97.8</b>	<b>98.0</b>	<b>98.0</b>	<b>97.7</b>	▼ -0.3	▲ 0.0
<b>Canadian Imports</b>	<b>6.1</b>	<b>5.3</b>	<b>5.3</b>	<b>5.7</b>	<b>5.7</b>	<b>5.7</b>	<b>5.4</b>	▼ -0.3	▼ -0.2
L48 Power	30.6	28.3	26.5	27.9	27.4	28.1	28.2	▲ 0.1	▲ 0.0
L48 Residential & Commercial	37.4	32.2	32.6	37.7	35.5	33.9	34.4	▲ 0.5	▼ -0.5
L48 Industrial	22.6	21.9	21.9	22.3	21.9	21.7	21.8	▲ 0.1	▼ -0.2
L48 Lease and Plant Fuel	5.3	5.3	5.3	5.3	5.3	5.3	5.3	▼ 0.0	▼ 0.0
L48 Pipeline Distribution	3.6	3.2	3.1	3.5	3.4	3.3	3.3	▲ 0.0	▼ 0.0
<b>L48 Regional Gas Consumption</b>	<b>99.5</b>	<b>91.0</b>	<b>89.4</b>	<b>96.7</b>	<b>93.6</b>	<b>92.3</b>	<b>93.1</b>	▲ 0.7	▼ -0.7
<b>Net LNG Delivered</b>	<b>11.25</b>	<b>11.30</b>	<b>12.29</b>	<b>12.46</b>	<b>12.36</b>	<b>12.35</b>	<b>11.87</b>	▼ -0.5	▼ -0.1
<b>Total Mexican Exports</b>	<b>6.2</b>	<b>6.3</b>	<b>6.1</b>	<b>6.0</b>	<b>6.2</b>	<b>5.9</b>	<b>5.9</b>	▲ 0.0	▼ -0.2
<b>Implied Daily Storage Activity</b>	<b>-14.0</b>	<b>-5.8</b>	<b>-4.8</b>	<b>-11.7</b>	<b>-8.4</b>	<b>-6.9</b>	<b>-7.8</b>		
<b>EIA Reported Daily Storage Activity</b>									
<b>Daily Model Error</b>									

### EIA Storage Week Balances

	22-Oct	29-Oct	5-Nov	12-Nov	19-Nov	26-Nov	WoW	vs. 4W
<b>Lower 48 Dry Production</b>	<b>93.8</b>	<b>94.9</b>	<b>95.5</b>	<b>96.4</b>	<b>95.6</b>	<b>96.6</b>	▲ 1.1	▲ 1.1
<b>Canadian Imports</b>	<b>5.6</b>	<b>5.6</b>	<b>5.5</b>	<b>5.1</b>	<b>4.9</b>	<b>5.5</b>	▲ 0.7	▲ 0.3
L48 Power	29.0	29.0	29.5	27.5	27.8	29.2	▲ 1.5	▲ 0.8
L48 Residential & Commercial	13.9	17.7	24.1	23.4	27.8	33.1	▲ 5.3	▲ 9.9
L48 Industrial	19.8	20.3	22.0	22.0	23.7	22.3	▼ -1.3	▲ 0.4
L48 Lease and Plant Fuel	5.1	5.2	5.2	5.2	5.2	5.3	▲ 0.1	▲ 0.1
L48 Pipeline Distribution	2.3	2.5	2.9	2.7	3.0	3.3	▲ 0.4	▲ 0.6
<b>L48 Regional Gas Consumption</b>	<b>70.0</b>	<b>74.6</b>	<b>83.6</b>	<b>80.8</b>	<b>87.4</b>	<b>93.3</b>	▲ 5.9	▲ 11.7
<b>Net LNG Exports</b>	<b>10.8</b>	<b>10.8</b>	<b>10.9</b>	<b>11.2</b>	<b>11.1</b>	<b>11.7</b>	▲ 0.6	▲ 0.7
<b>Total Mexican Exports</b>	<b>6.6</b>	<b>6.9</b>	<b>6.1</b>	<b>6.2</b>	<b>6.1</b>	<b>6.1</b>	▼ 0.0	▼ -0.2
<b>Implied Daily Storage Activity</b>	<b>12.0</b>	<b>8.2</b>	<b>0.4</b>	<b>3.3</b>	<b>-4.2</b>	<b>-8.9</b>	<b>-4.7</b>	
<b>EIA Reported Daily Storage Activity</b>	<b>12.4</b>	<b>9.0</b>	<b>1.0</b>	<b>3.7</b>	<b>-3.0</b>			
<b>Daily Model Error</b>	<b>-0.4</b>	<b>-0.8</b>	<b>-0.6</b>	<b>-0.5</b>	<b>-1.2</b>			

### Monthly Balances

	2Yr Ago Nov-19	LY Nov-20	Jul-21	Aug-21	Sep-21	Oct-21	MTD Nov-21	MoM	vs. LY
<b>Lower 48 Dry Production</b>	<b>96.2</b>	<b>91.1</b>	<b>93.6</b>	<b>94.2</b>	<b>93.7</b>	<b>94.3</b>	<b>96.3</b>	▲ 2.0	▲ 5.2
<b>Canadian Imports</b>	<b>4.5</b>	<b>4.6</b>	<b>5.2</b>	<b>5.1</b>	<b>5.1</b>	<b>5.4</b>	<b>5.3</b>	▼ -0.1	▲ 0.7
L48 Power	27.5	25.7	39.4	40.0	33.2	30.3	28.6	▼ -1.7	▲ 2.8
L48 Residential & Commercial	32.8	24.4	8.1	7.8	7.7	12.9	29.1	▲ 16.2	▲ 4.8
L48 Industrial	24.9	22.4	21.2	21.8	21.5	21.0	22.6	▲ 1.6	▲ 0.2
L48 Lease and Plant Fuel	5.2	5.0	5.1	5.1	5.1	5.1	5.2	▲ 0.1	▲ 0.3
L48 Pipeline Distribution	3.0	2.7	2.5	2.6	2.2	2.3	3.1	▲ 0.8	▲ 0.4
<b>L48 Regional Gas Consumption</b>	<b>93.5</b>	<b>80.2</b>	<b>76.3</b>	<b>77.4</b>	<b>69.7</b>	<b>71.6</b>	<b>88.6</b>	▲ 17.0	▲ 8.5
<b>Net LNG Exports</b>	<b>7.2</b>	<b>10.1</b>	<b>10.8</b>	<b>10.5</b>	<b>10.3</b>	<b>10.6</b>	<b>11.4</b>	▲ 0.8	▲ 1.3
<b>Total Mexican Exports</b>	<b>5.2</b>	<b>6.1</b>	<b>7.1</b>	<b>6.9</b>	<b>6.7</b>	<b>6.6</b>	<b>6.1</b>	▼ -0.6	▼ 0.0
<b>Implied Daily Storage Activity</b>	<b>-5.1</b>	<b>-0.7</b>	<b>4.6</b>	<b>4.6</b>	<b>12.1</b>	<b>10.9</b>	<b>-4.5</b>		
<b>EIA Reported Daily Storage Activity</b>									
<b>Daily Model Error</b>									

Source: Bloomberg, analytix.ai

## Daily Average Generation Data

### Nuclear Generation Daily Average - GWh (NRC)

	21-Nov	22-Nov	23-Nov	24-Nov	25-Nov	26-Nov	27-Nov	DoD	vs. 7D
NRC Nuclear Daily Output	85.8	86.3	87.2	87.9	87.9	88.3	88.3	0.0	1.0
NRC Nuclear Max Capacity	104.9	104.9	104.9	104.9	104.9	104.9	104.9	0.0	0.0
NRC Nuclear Outage	19.0	18.6	17.7	16.9	16.9	16.6	16.6	0.0	-1.0
NRC % Nuclear Cap Utilization	87.3	87.7	88.7	89.4	89.4	89.7	89.7	0.0	1.0

### Wind Generation Daily Average - MWh (EIA)

	21-Nov	22-Nov	23-Nov	24-Nov	25-Nov	26-Nov	27-Nov	DoD	vs. 7D
CALI Wind	1455	574	2620	2018	1987	510	311	-199	-1216
TEXAS Wind	14406	13940	17438	18308	18272	9894	7715	-2178	-7661
US Wind	52884	52117	66417	75184	74899	52069	49433	-2636	-12829

### Generation Daily Average - MWh (EIA)

	21-Nov	22-Nov	23-Nov	24-Nov	25-Nov	26-Nov	27-Nov	DoD	vs. 7D
US Wind	52884	52117	66417	75184	74899	52069	49433	-2636	-12829
US Solar	7460	6736	8888	9388	9268	8997	9239	242	782
US Petroleum	2616	2609	3495	2767	2660	3286	2877	-410	-29
US Other	7820	8363	8724	8627	8581	8106	8300	194	-70
US Coal	79990	82249	85350	81594	80098	78647	79756	1109	-1565
US Nuke	90828	91313	92932	93020	92870	93482	93494	12	1086
US Hydro	25622	13037	27901	29461	4489	23519	26449	2930	5777
<b>US Gas</b>	<b>134156</b>	<b>144902</b>	<b>154604</b>	<b>145379</b>	<b>142384</b>	<b>138495</b>	<b>145420</b>	<b>6925</b>	<b>2100</b>

See National Wind and Nuclear daily charts

Source: Bloomberg, analytix.ai

## Storage Week Average Generation Data

### Nuclear Generation Weekly Average - GWh (NRC)

	22-Oct	29-Oct	5-Nov	12-Nov	19-Nov	26-Nov	WoW	WoW Bcf/d Impact
NRC Nuclear Daily Output	73.6	71.6	72.2	79.8	83.9	86.1	2.2	-0.4
NRC Nuclear Max Capacity	104.9	104.9	104.9	104.9	104.9	104.9	0.0	
NRC Nuclear Outage	31.2	33.3	32.7	25.1	21.0	18.8	-2.2	
NRC % Nuclear Cap Utilization	0.1	0.1	0.1	0.1	0.1	0.1	0.0	

### Wind Generation Weekly Average - MWh (EIA)

	22-Oct	29-Oct	5-Nov	12-Nov	19-Nov	26-Nov	WoW	WoW Bcf/d Impact
CALI Wind	1270	2314	1669	1805	862	1646	784	-0.1
TEXAS Wind	10729	15462	8472	12032	13655	16166	2511	-0.5
US Wind	43721	49870	32116	51002	58367	61422	3055	-0.5
					7364.6			
					14%			

### Generation Weekly Average - MWh (EIA)

	22-Oct	29-Oct	5-Nov	12-Nov	19-Nov	26-Nov	WoW	WoW Bcf/d Impact
US Wind	43721	49870	32116	51002	58367	61422	3055	<b>-0.5</b>
US Solar	12209	10138	9979	10015	10016	8668	-1347	<b>0.2</b>
US Petroleum	3092	2815	3517	2532	2555	2997	442	<b>-0.1</b>
US Other	12109	10196	9288	8205	7815	8366	550	-0.1
US Coal	74017	73355	77392	77955	77804	81583	3779	-0.7
US Nuke	73748	73713	75510	84337	88331	91168	2837	<b>-0.5</b>
US Hydro	23105	23540	25530	25395	26226	22225	-4001	0.7
<b>US Gas</b>	<b>150057</b>	<b>152806</b>	<b>159071</b>	<b>145213</b>	<b>145072</b>	<b>146908</b>	<b>1836</b>	-0.3

See National Wind and Nuclear daily charts

Source: Bloomberg, analytix.ai

## Monthly Average Generation Data

### Nuclear Generation Monthly Average - GWh (NRC)

	2Yr Ago	LY	MTD						
	Same 30 days	Same 30 days	Aug-21	Sep-21	Oct-21	Nov-21	Last 30 days	MoM (MTD vs LY)	Last 30 days YoY
	NRC Nuclear Daily Output	84.6	81.5	91.5	87.2	75.5	82.5	82.2	7.0
NRC Nuclear Max Capacity	104.9	104.9	104.9	104.9	104.9	104.9	104.9	0.0	0.0
NRC Nuclear Outage	20.3	23.4	13.4	17.7	29.4	22.3	22.7	-7.0	-0.7
NRC % Nuclear Cap Utilization	86.0	82.8	93.0	88.7	76.8	83.9	83.5	7.2	0.7

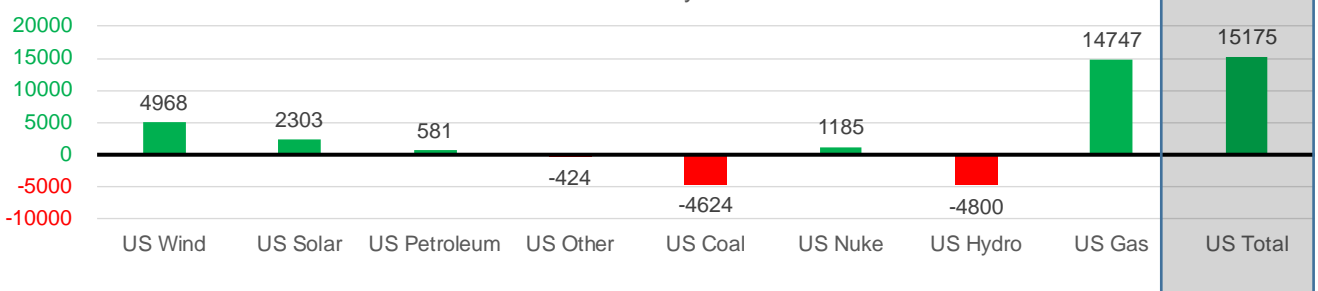
### Wind Generation Monthly Average - MWh (EIA)

	2Yr Ago	LY	MTD						
	Same 30 days	Same 30 days	Aug-21	Sep-21	Oct-21	Nov-21	Last 30 days	MoM (MTD vs LY)	Last 30 days YoY
	CALI Wind	650	1234	2442	2020	1765	1316	1363	-450
TEXAS Wind	8840	10406	9901	9400	11565	12142	12147	577	1741
US Wind	36052	46287	35830	40223	40991	51650	51255	10659	4968

### Generation Monthly Average - MWh (EIA)

	2Yr Ago	LY	MTD						
	Same 30 days	Same 30 days	Aug-21	Sep-21	Oct-21	Nov-21	Last 30 days	MoM (MTD vs LY)	Last 30 days YoY
	US Wind	36052	46287	35830	40223	40991	51650	51255	▼ -394.4
US Solar	5496	7201	13787	13382	11044	9458	9504	▲ 46.0	▲ 2303
US Petroleum	2471	2309	4484	2452	3238	2895	2890	▼ -5	▲ 581
US Other	8089	8800	9928	9008	11099	8384	8376	▼ -8	▼ -424
US Coal	101259	84056	137655	110037	82735	80060	79432	▼ -628	▼ -4624
US Nuke	92162	85547	94062	90146	76700	87211	86732	▼ -479	▲ 1185
US Hydro	27364	29872	28533	25665	23895	25139	25072	▼ -68	▼ -4800
<b>US Gas</b>	<b>147231</b>	<b>134034</b>	<b>210824</b>	<b>173538</b>	<b>158238</b>	<b>149661</b>	<b>148781</b>	▼ -1537	▲ 14747
<b>US Total</b>	<b>420349</b>	<b>398783</b>	<b>534937</b>	<b>464626</b>	<b>410698</b>	<b>416388</b>	<b>413958</b>	▼ -2680	▲ 15175

Last 30 days YoY



See National Wind and Nuclear daily charts

Source: Bloomberg, analytix.ai

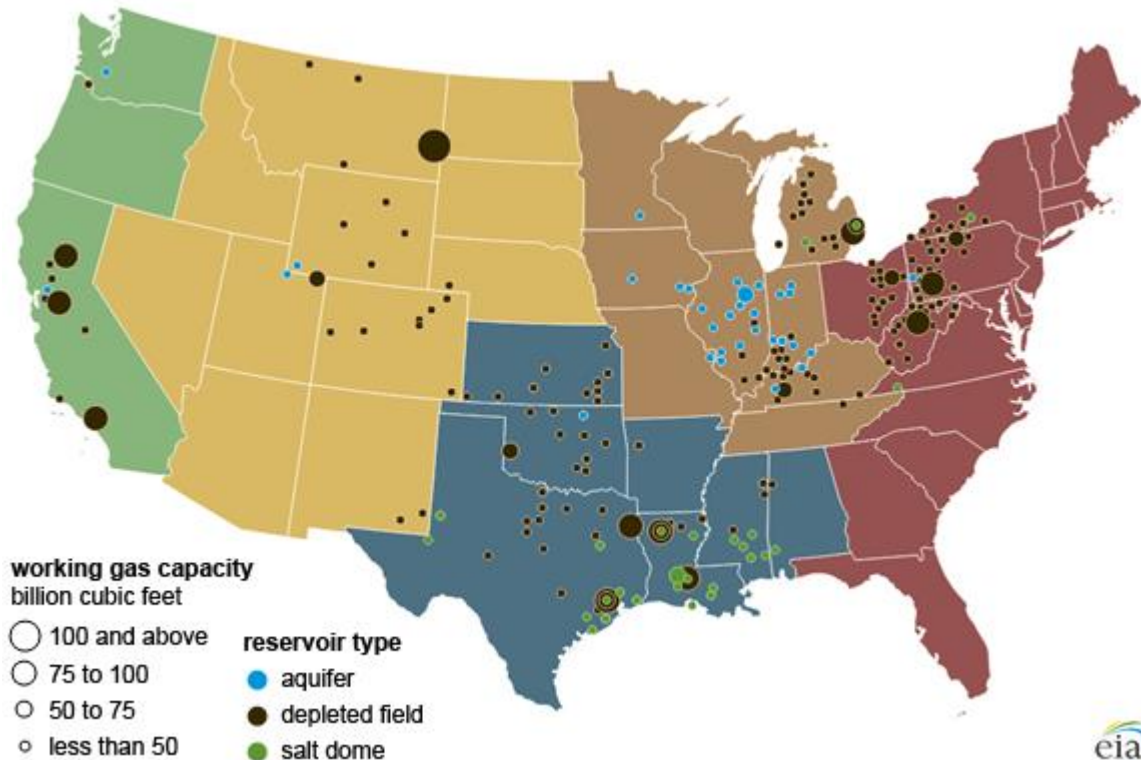
### Regional S/D Models Storage Projection

Week Ending 26-Nov

	Daily Raw Storage	Daily Adjustment Factor	Daily Average Storage Activity (Adjusted) *	Weekly Adjusted Storage Activity
L48	-9.2	1.3	-7.9	-55
East	-5.1	1.3	-3.8	-26
Midwest	-3.3	0.8	-2.5	-17
Mountain	2.9	-3.5	-0.6	-4
South Central	-4.0	2.7	-1.2	-9
Pacific	0.3	-0.1	0.2	1

\*Adjustment Factor is calculated based on historical regional deltas

U.S. underground natural gas storage facilities by type (July 2015)

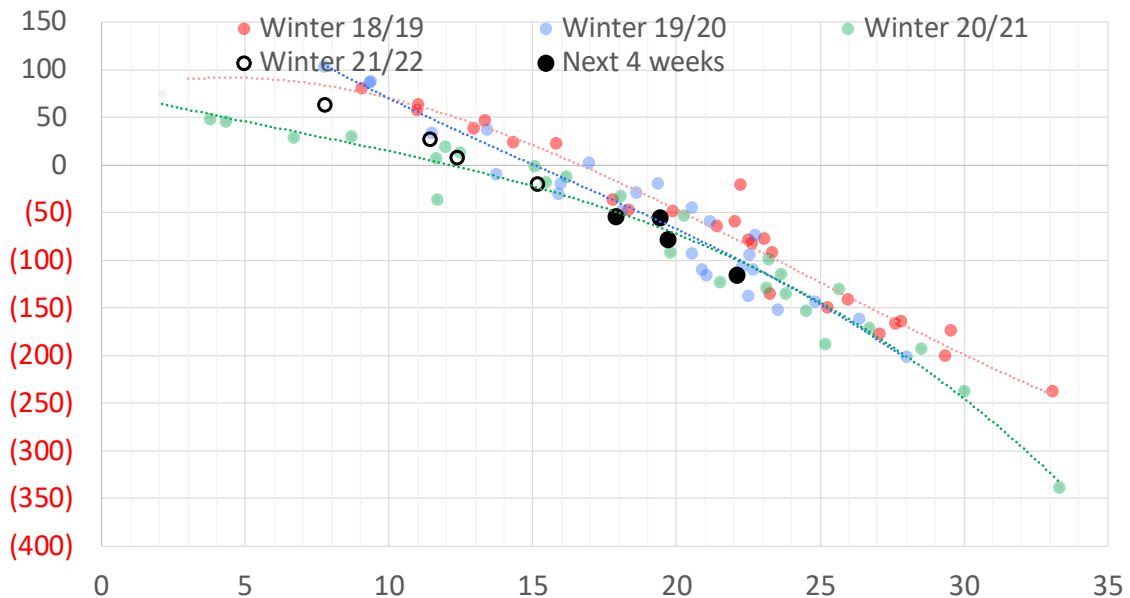


## Weather Model Storage Projection

Next report  
and beyond

Week Ending	GWDDs	Week Storage Projection
26-Nov	19	-55
03-Dec	18	-53
10-Dec	20	-78
17-Dec	22	-115

Weather Storage Model - Next 4 Week Forecast

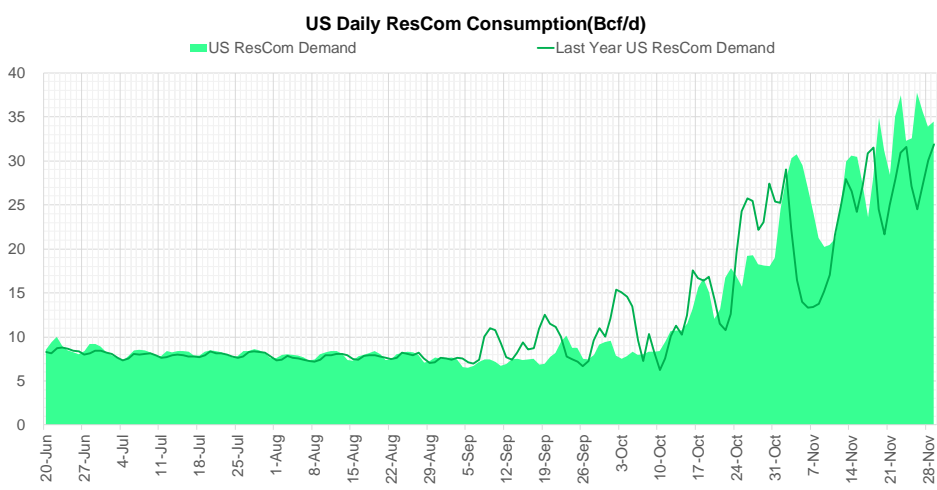
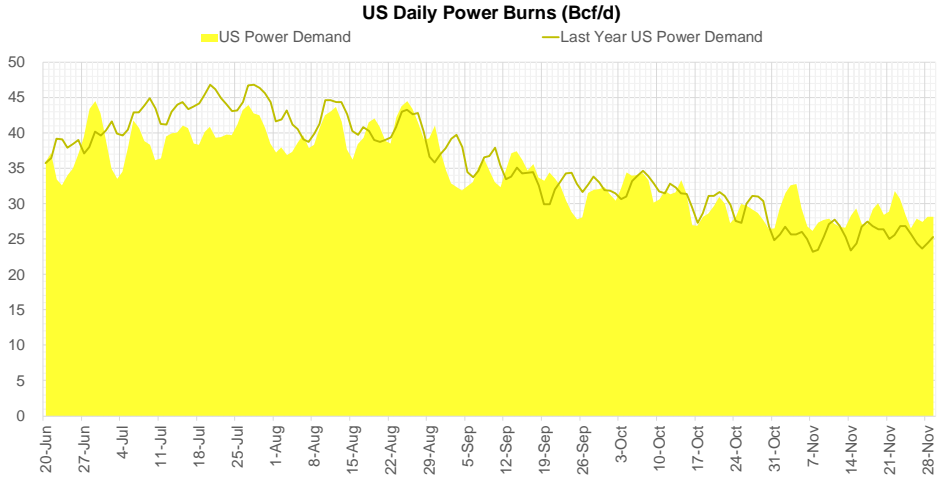
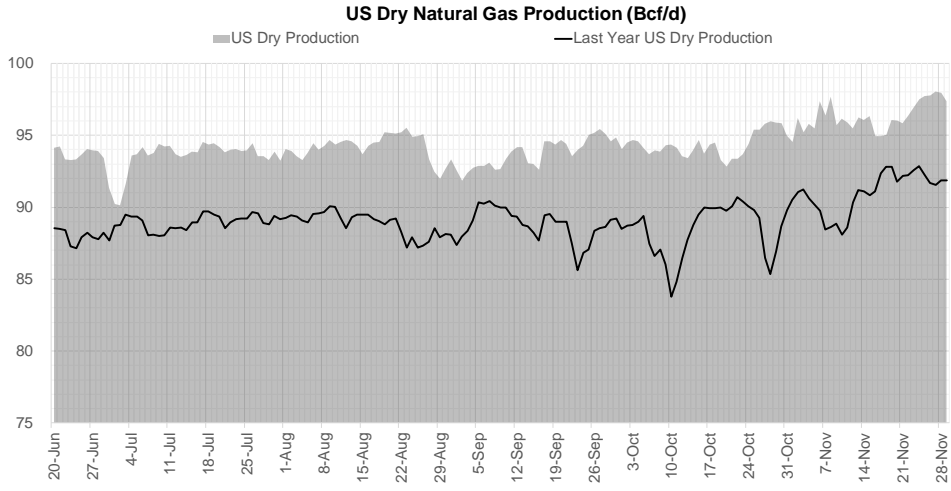


Go to larger image





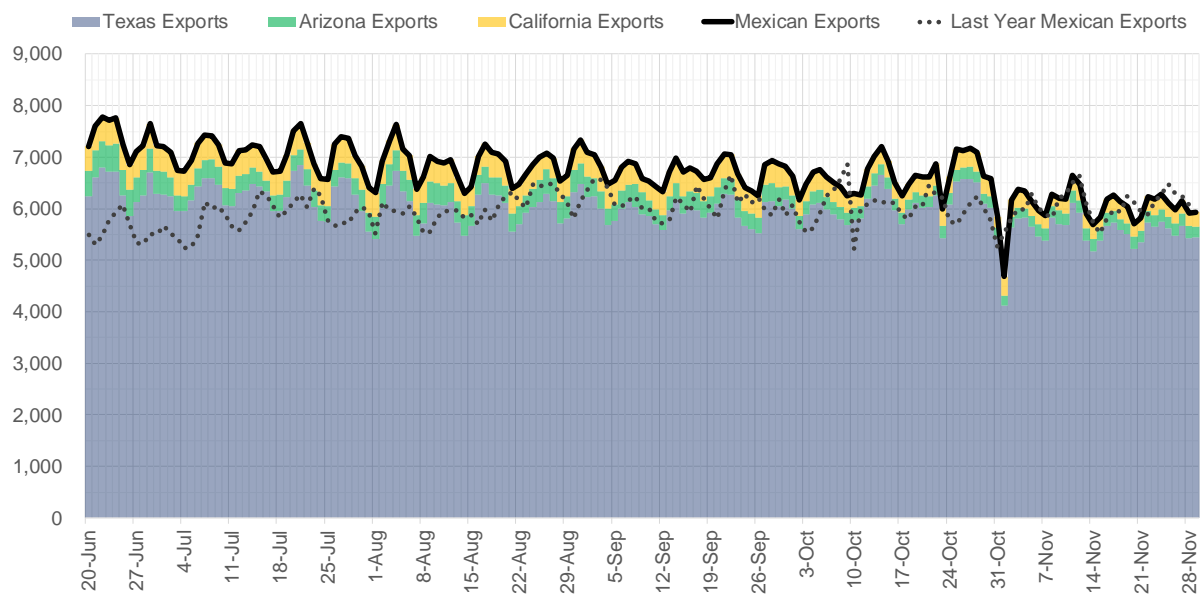
## Supply – Demand Trends



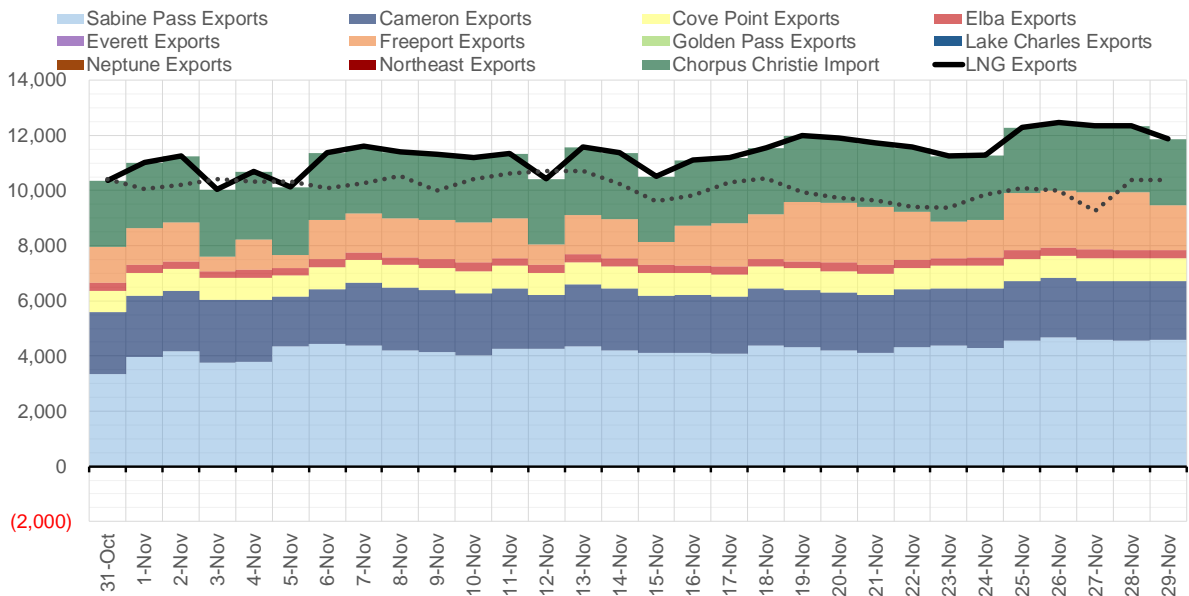
Source: Bloomberg

The risk of trading futures and options and other derivatives involves a substantial risk of loss and is not suitable for all persons. Each person must consider whether a particular trade, combination of trades, or strategy is suitable for that person's financial means and objectives. Past results are not necessarily indicative of future results. This communication may contain links to third party websites which are not under the control of and are not maintained by ION Energy Group, and ION Energy Group is not responsible for their content.

### Mexican Exports (MMcf/d)



### Net LNG Exports - Last 30 days (MMcf/d)



Source: Bloomberg

The risk of trading futures and options and other derivatives involves a substantial risk of loss and is not suitable for all persons. Each person must consider whether a particular trade, combination of trades, or strategy is suitable for that person's financial means and objectives. Past results are not necessarily indicative of future results. This communication may contain links to third party websites which are not under the control of and are not maintained by ION Energy Group, and ION Energy Group is not responsible for their content.

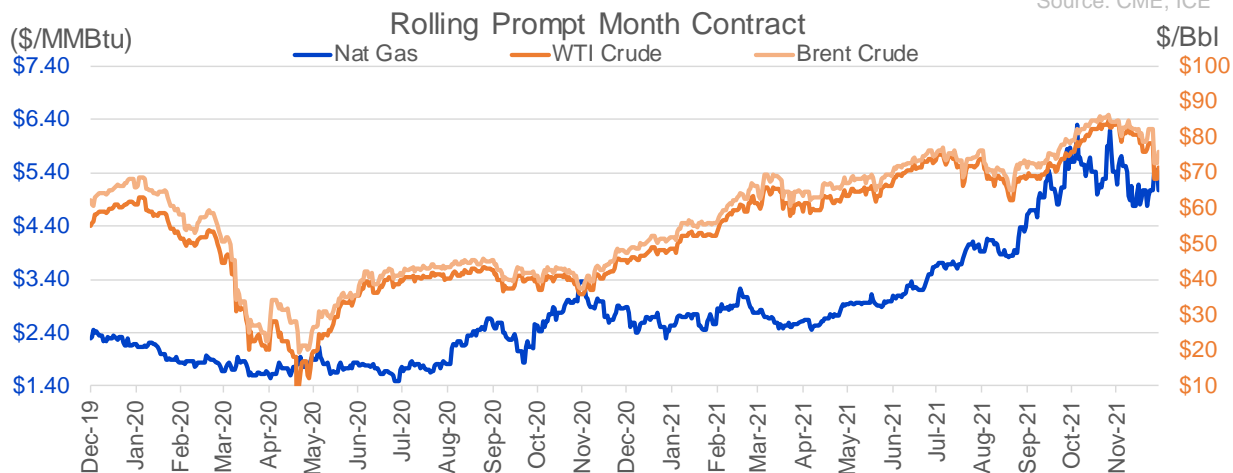
## Nat Gas Options Volume and Open Interest CME, ICE and Nasdaq Combined

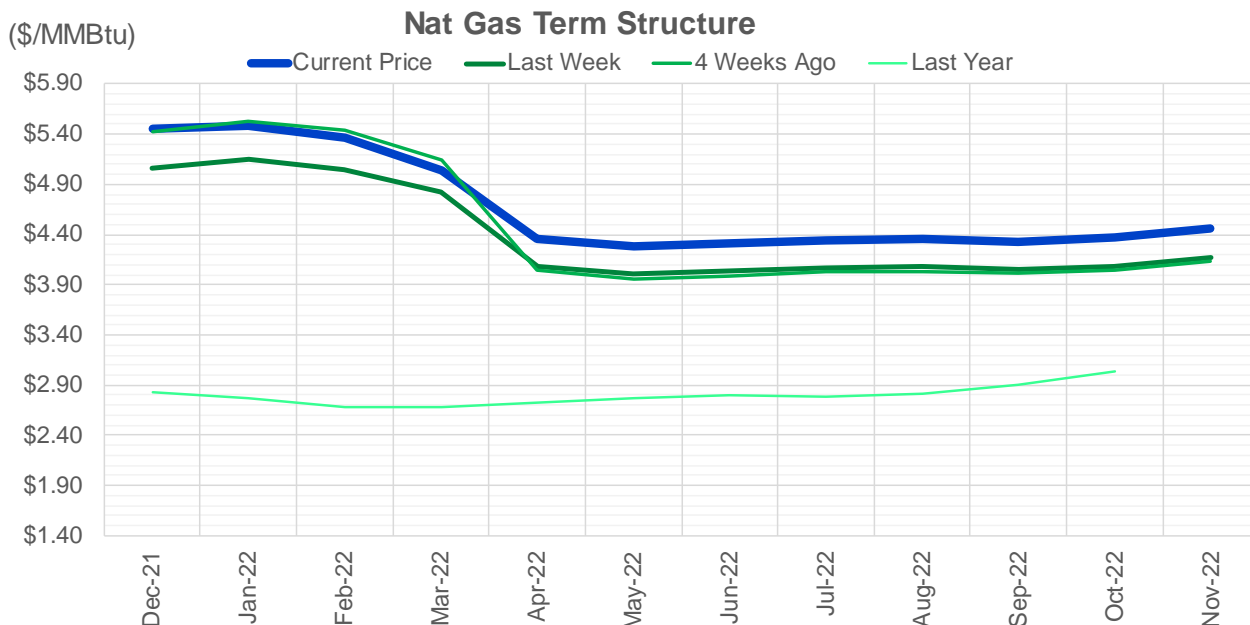
CONTRACT MONTH	CONTRACT YEAR	PUT/CALL	STRIKE	CUMULATIVE VOL	CONTRACT MONTH	CONTRACT YEAR	PUT/CALL	STRIKE	CUMULATIVE OI
4	2022	P	3.25	2100	3	2022	C	10.00	36008
1	2022	C	6.50	2002	3	2022	C	8.00	26094
5	2022	P	3.25	1800	1	2022	P	2.75	23233
6	2022	P	3.25	1800	3	2022	C	5.00	22726
8	2022	P	3.25	1800	1	2022	P	3.00	22600
9	2022	P	3.25	1800	1	2022	C	6.00	22248
10	2022	P	3.25	1800	4	2022	C	3.00	19710
1	2022	P	4.50	1467	1	2022	C	7.00	19413
7	2022	P	3.50	1100	3	2022	P	2.50	18939
8	2022	P	3.50	1100	1	2022	C	5.00	18919
9	2022	P	3.50	1100	3	2022	P	3.50	18200
10	2022	P	3.50	1100	1	2022	P	3.50	17993
7	2022	C	5.25	1000	2	2022	C	5.00	17791
8	2022	C	5.25	1000	3	2022	C	6.00	17692
9	2022	C	5.25	1000	3	2022	P	4.00	17656
10	2022	C	5.25	1000	3	2022	P	3.00	16633
1	2022	C	8.00	983	4	2022	C	5.00	16597
1	2022	C	7.00	868	12	2022	C	5.00	16047
1	2022	P	4.25	847	1	2022	C	10.00	15695
3	2022	P	3.50	816	3	2022	C	4.00	15507
1	2022	C	10.00	760	1	2022	P	4.00	15459
2	2022	C	11.00	752	1	2022	C	8.00	15397
3	2022	P	3.75	735	4	2022	P	2.50	15389
3	2022	P	3.00	725	2	2022	P	3.50	15343
3	2022	C	5.00	658	2	2022	C	6.00	14712
1	2022	C	7.50	574	1	2022	C	4.00	14369
3	2022	P	4.50	503	3	2022	P	5.00	13998
10	2022	C	7.00	500	3	2022	C	7.00	13887
10	2022	P	3.00	500	5	2022	C	3.00	13733
3	2022	C	9.00	466	2	2022	P	4.00	13639
2	2022	C	6.00	460	6	2022	C	3.00	13438
1	2022	C	15.00	452	12	2022	C	4.50	13392
1	2022	P	4.75	445	6	2022	C	5.00	13307
1	2022	C	5.50	407	12	2022	C	5.25	13263
5	2022	C	5.00	400	7	2022	C	3.00	13230
1	2022	P	4.00	381	8	2022	C	3.00	13226
3	2022	C	8.00	335	9	2022	C	3.00	13225
4	2022	P	3.50	300	2	2022	C	4.00	13220
1	2022	C	6.00	286	3	2022	C	3.00	13177
3	2022	C	6.00	272	10	2022	C	3.00	13114
3	2022	C	7.00	267	2	2022	C	10.00	13041
3	2022	P	4.00	265	1	2022	P	4.50	12960
1	2022	C	12.00	235	1	2022	P	3.25	12778
4	2022	C	5.00	201	5	2022	P	3.00	12703
3	2022	C	4.95	200	5	2022	C	5.00	12108
4	2022	P	3.00	200	1	2022	C	6.10	12035
1	2022	P	4.65	192	1	2022	P	2.50	11820
1	2022	C	7.20	185	5	2022	P	2.50	11818
3	2022	P	5.00	175	3	2022	C	3.50	11629
					2	2022	P	2.5	11613

Source: CME, ICE

## Nat Gas Futures Open Interest CME, and ICE Combined

CME Henry Hub Futures (10,000 MMBtu)				ICE Henry Hub Futures Contract Equivalent (10,000 MM			
	Current	Prior	Daily Change		Current	Prior	Daily Change
JAN 22	403	4808	-4405	JAN 22	87078	85978	1100
FEB 22	258333	253029	5304	FEB 22	103906	103473	433
MAR 22	82896	80929	1967	MAR 22	69809	70860	-1052
APR 22	170362	168992	1370	APR 22	78683	78134	550
MAY 22	119904	119324	580	MAY 22	76219	77203	-984
JUN 22	140228	136657	3571	JUN 22	72053	72148	-95
JUL 22	46968	45793	1175	JUL 22	55473	55169	304
AUG 22	43810	43644	166	AUG 22	57036	56788	247
SEP 22	33745	33369	376	SEP 22	55613	55317	296
OCT 22	38758	38262	496	OCT 22	56655	56459	196
NOV 22	88191	87940	251	NOV 22	63143	62999	145
DEC 22	35087	35113	-26	DEC 22	48521	48423	98
JAN 23	27362	27087	275	JAN 23	51827	51750	77
FEB 23	39189	36138	3051	FEB 23	41173	41019	155
MAR 23	12059	11924	135	MAR 23	33603	33562	42
APR 23	26739	27488	-749	APR 23	37979	37824	155
MAY 23	19170	19515	-345	MAY 23	39374	39394	-20
JUN 23	11605	11399	206	JUN 23	35193	35243	-51
JUL 23	9507	9348	159	JUL 23	31908	31803	106
AUG 23	7014	6504	510	AUG 23	31601	31551	50
SEP 23	4770	4930	-160	SEP 23	32714	32664	50
OCT 23	6762	6730	32	OCT 23	30974	30868	106
NOV 23	10866	10630	236	NOV 23	34909	34859	50
DEC 23	5560	5544	16	DEC 23	33780	33793	-13
JAN 24	8526	8519	7	JAN 24	31220	31232	-12
FEB 24	5081	5080	1	FEB 24	20441	20457	-16
MAR 24	1460	1460	0	MAR 24	15450	15450	0
APR 24	8704	8704	0	APR 24	20590	20583	8
MAY 24	4871	4871	0	MAY 24	14536	14514	23
JUN 24	2038	1998	40	JUN 24	15200	15184	16





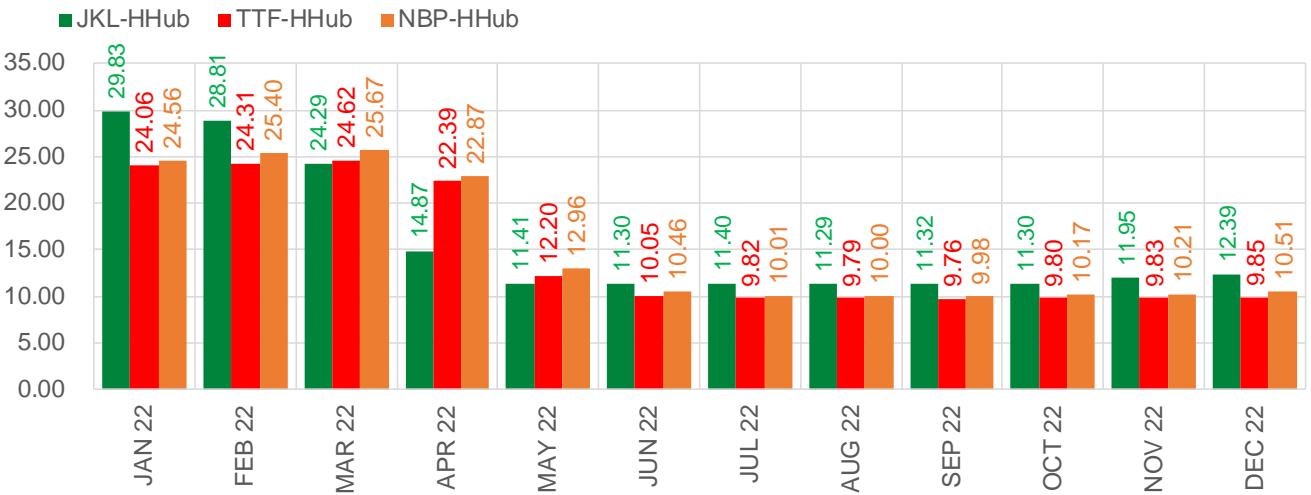
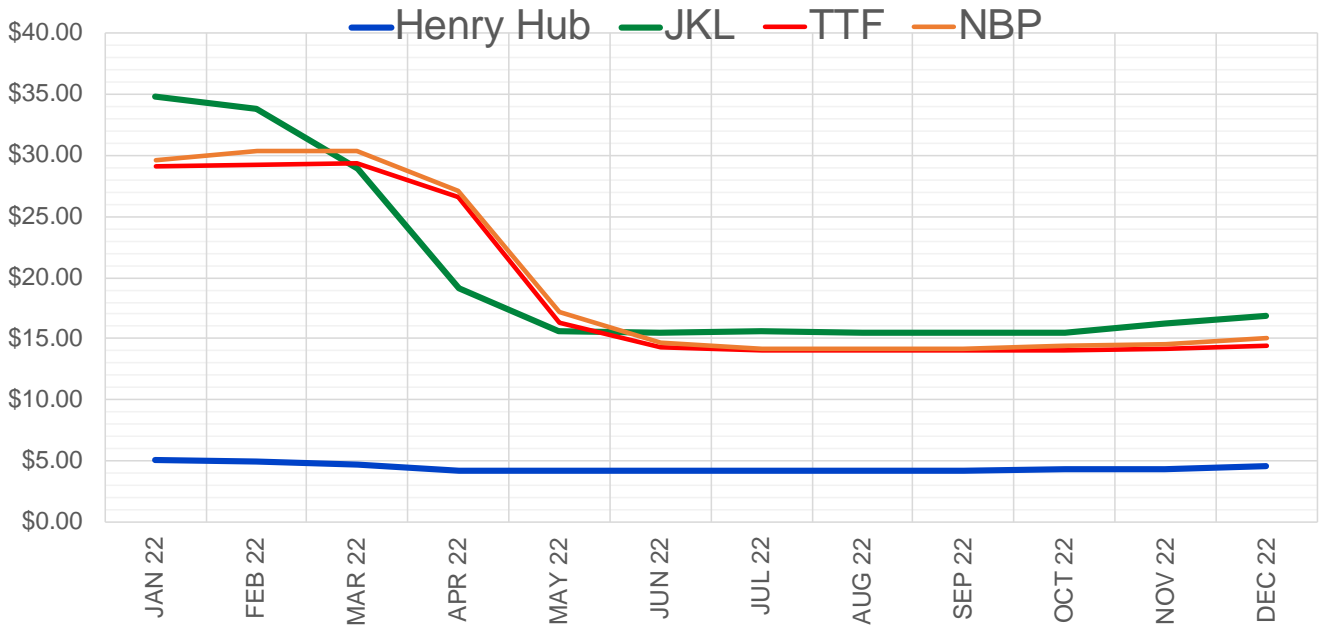
	Dec-21	Jan-22	Feb-22	Mar-22	Apr-22	May-22	Jun-22	Jul-22	Aug-22	Sep-22	Oct-22	Nov-22
<b>Current Price</b>	<b>\$5.447</b>	<b>\$5.477</b>	<b>\$5.364</b>	<b>\$5.044</b>	<b>\$4.352</b>	<b>\$4.285</b>	<b>\$4.310</b>	<b>\$4.346</b>	<b>\$4.350</b>	<b>\$4.330</b>	<b>\$4.367</b>	<b>\$4.454</b>
Last Week	\$5.065	\$5.145	\$5.052	\$4.818	\$4.078	\$4.004	\$4.031	\$4.071	\$4.076	\$4.056	\$4.084	\$4.164
vs. Last Week	\$0.382	\$0.332	\$0.312	\$0.226	\$0.274	\$0.281	\$0.279	\$0.275	\$0.274	\$0.274	\$0.283	\$0.290
4 Weeks Ago	\$5.426	\$5.529	\$5.433	\$5.145	\$4.047	\$3.955	\$3.989	\$4.031	\$4.035	\$4.018	\$4.050	\$4.140
vs. 4 Weeks Ago	\$0.021	-\$0.052	-\$0.069	-\$0.101	\$0.305	\$0.330	\$0.321	\$0.315	\$0.315	\$0.312	\$0.317	\$0.314
Last Year	\$2.843	\$2.832	\$2.776	\$2.685	\$2.682	\$2.719	\$2.774	\$2.796	\$2.791	\$2.819	\$2.897	\$3.044
vs. Last Year	\$2.604	\$2.645	\$2.588	\$2.359	\$1.670	\$1.566	\$1.536	\$1.550	\$1.559	\$1.511	\$1.470	\$1.410

	Units	Cash Settled	Prompt Settle	Cash to Prompt
AGT Citygate	\$/MMBtu	6.68	11.47	4.79
TETCO M3	\$/MMBtu	5.01	6.01	1.00
FGT Zone 3	\$/MMBtu	5.30	5.18	-0.13
Zone 6 NY	\$/MMBtu	5.30	6.40	1.10
Chicago Citygate	\$/MMBtu	4.76	5.22	0.46
Michcon	\$/MMBtu	4.80	4.86	0.06
Columbia TCO Pool	\$/MMBtu	4.66	4.57	-0.09
Ventura	\$/MMBtu	4.76	5.40	0.64
Rockies/Opal	\$/MMBtu	5.10	5.14	0.04
El Paso Permian Basin	\$/MMBtu	4.56	4.96	0.40
Socal Citygate	\$/MMBtu	4.70	6.19	1.49
Malin	\$/MMBtu	4.70	5.99	1.29
Houston Ship Channel	\$/MMBtu	4.72	5.18	0.45
Henry Hub Cash	\$/MMBtu	4.90	4.89	-0.01
AECO Cash	C\$/GJ	3.61	4.20	0.59
Station2 Cash	C\$/GJ	3.24	7.91	4.67
Dawn Cash	C\$/GJ	4.88	4.93	0.05

Source: CME, Bloomberg

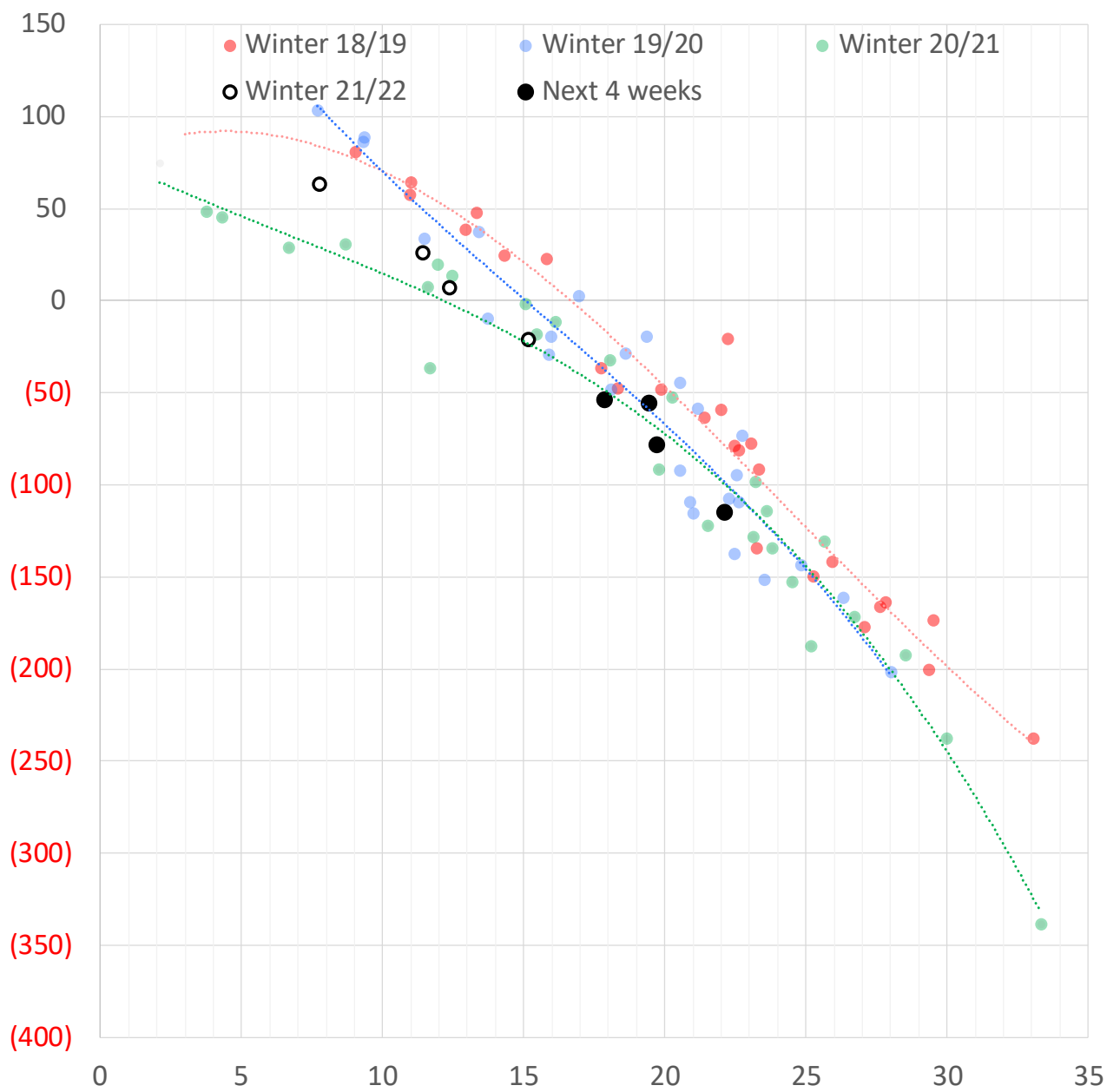
	Units	Current Price	vs. Last Week	vs. 4 Weeks Ago	vs. Last Year
NatGas Jul21/Oct21	\$/MMBtu	2.224	▲ 0.000	▲ 0.000	▲ 2.179
NatGas Oct21/Nov21	\$/MMBtu	0.361	▲ 0.000	▲ 0.000	▲ 0.283
NatGas Oct21/Jan22	\$/MMBtu	-0.364	▲ 0.332	▼ -0.052	▼ -0.692
NatGas Apr22/Oct22	\$/MMBtu	0.015	▲ 0.009	▲ 0.012	▼ -0.031
WTI Crude	\$/Bbl	68.15	▼ -7.950	▼ -15.420	▲ 22.620
Brent Crude	\$/Bbl	72.72	▼ -6.170	▼ -11.660	▲ 24.540
Fuel Oil, NY Harbour 1%	\$/Bbl	97.18	▲ 0.000	▲ 0.000	▲ 0.000
Heating Oil	cents/Gallon	209.45	▼ -19.890	▼ -40.190	▲ 71.400
Propane, Mt. Bel	cents/Gallon	1.27	▲ 0.022	▼ -0.173	▲ 0.727
Ethane, Mt. Bel	cents/Gallon	0.40	▲ 0.001	▼ -0.031	▲ 0.188
Coal, PRB	\$/MTon	12.30	▲ 0.000	▲ 0.000	▲ 0.000
Coal, PRB	\$/MMBtu	0.70			
Coal, ILB	\$/MTon	31.05	▲ 0.000	▲ 0.000	▲ 0.000
Coal, ILB	\$/MMBtu	1.32			

### Nat Gas Term Structure (\$MMBTU)



	JAN 22	FEB 22	MAR 22	APR 22	MAY 22	JUN 22	JUL 22	AUG 22	SEP 22	OCT 22	NOV 22	DEC 22
<b>Henry Hub</b>	\$5.063	\$4.964	\$4.698	\$4.220	\$4.162	\$4.185	\$4.225	\$4.229	\$4.217	\$4.250	\$4.330	\$4.518
<b>JKL</b>	\$34.890	\$33.775	\$28.985	\$19.090	\$15.575	\$15.485	\$15.620	\$15.515	\$15.540	\$15.550	\$16.280	\$16.905
<b>JKL-HHub</b>	\$29.827	\$28.811	\$24.287	\$14.870	\$11.413	\$11.300	\$11.395	\$11.286	\$11.323	\$11.300	\$11.950	\$12.387
<b>TTF</b>	\$29.123	\$29.278	\$29.313	\$26.613	\$16.362	\$14.238	\$14.042	\$14.019	\$13.981	\$14.054	\$14.157	\$14.368
<b>TTF-HHub</b>	\$24.060	\$24.314	\$24.615	\$22.393	\$12.200	\$10.053	\$9.817	\$9.790	\$9.764	\$9.804	\$9.827	\$9.850
<b>NBP</b>	\$29.618	\$30.360	\$30.368	\$27.094	\$17.124	\$14.643	\$14.230	\$14.227	\$14.199	\$14.415	\$14.540	\$15.031
<b>NBP-HHub</b>	\$24.555	\$25.396	\$25.670	\$22.874	\$12.962	\$10.458	\$10.005	\$9.998	\$9.982	\$10.165	\$10.210	\$10.513

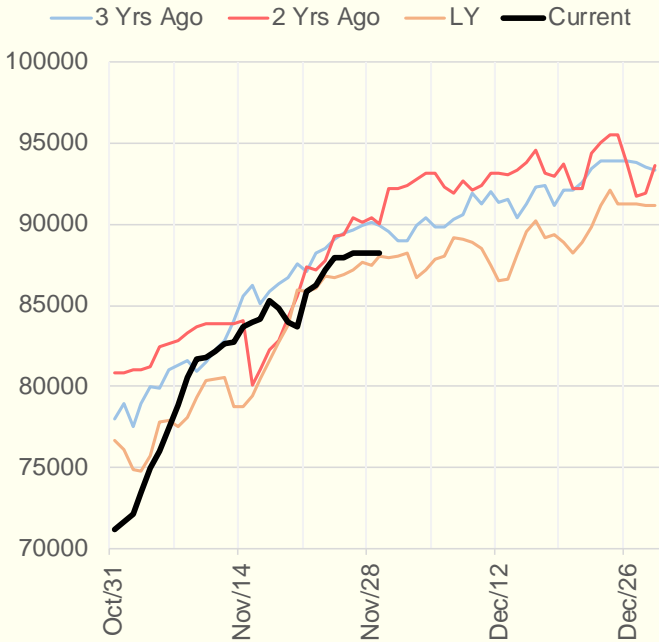
### Weather Storage Model - Next 4 Week Forecast



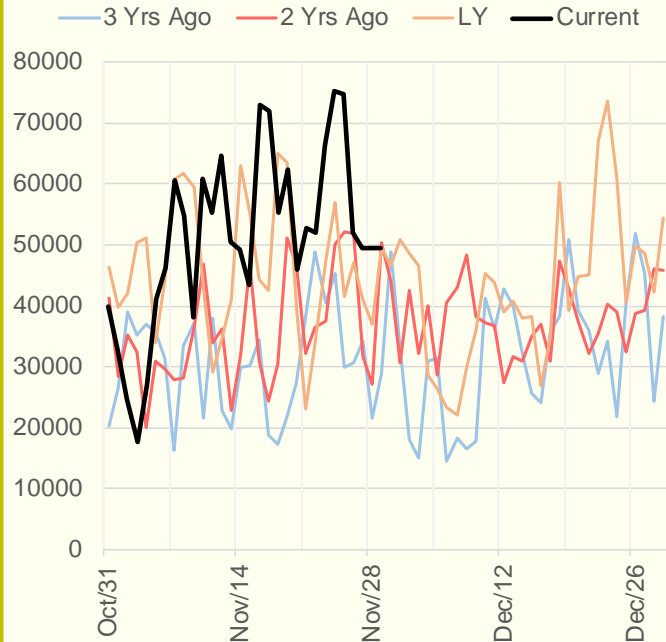
The risk of trading futures and options and other derivatives involves a substantial risk of loss and is not suitable for all persons. Each person must consider whether a particular trade, combination of trades, or strategy is suitable for that person's financial means and objectives. Past results are not necessarily indicative of future results. This communication may contain links to third party websites which are not under the control of and are not maintained by ION Energy Group, and ION Energy Group is not responsible for their content.



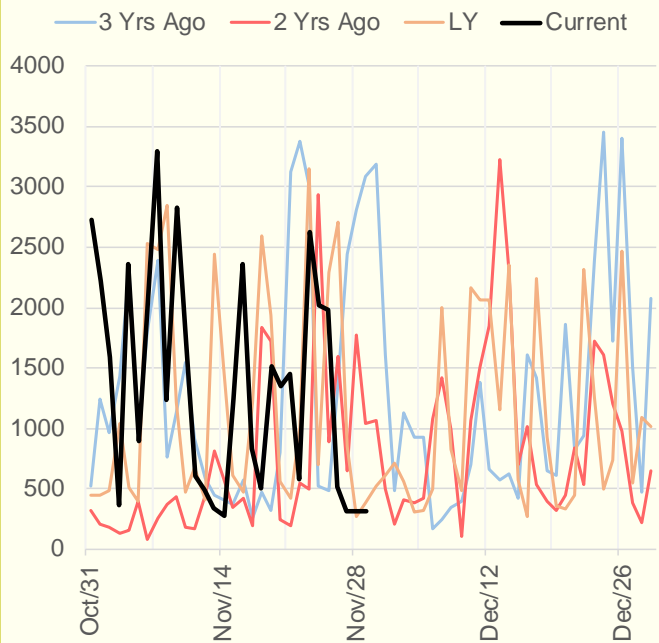
### NRC Nuclear Daily Output



### US Wind



### CALI Wind



### TEXAS Wind

