

	Current	Δ from YD	Δ from 7D Avg
Nat Gas Prompt	\$ 4.97 ▲	\$ 0.00 ▲	\$ 0.02 ▲

	Current	Δ from YD	Δ from 7D Avg
WTI Prompt	\$ 78.37 ▼	\$ (0.13) ▲	\$ 1.1 ▲

	Current	Δ from YD	Δ from 7D Avg
Brent Prompt	\$ 82.13 ▼	\$ (0.18) ▲	\$ 2.1 ▲

Page Menu

[Short-term Weather Model Outlooks](#)

[Lower 48 Component Models](#)

[Regional S/D Models Storage Projection](#)

[Weather Model Storage Projection](#)

[Supply – Demand Trends](#)

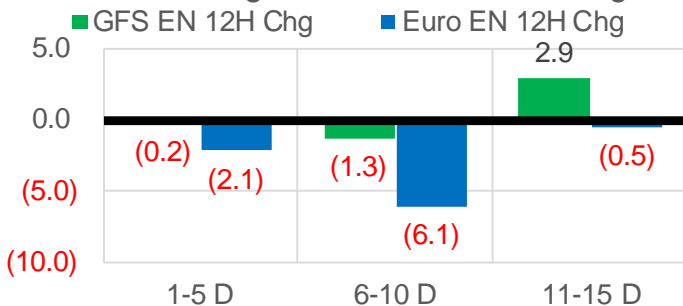
[Nat Gas Options Volume and Open Interest](#)

[Nat Gas Futures Open Interest](#)

[Price Summary](#)

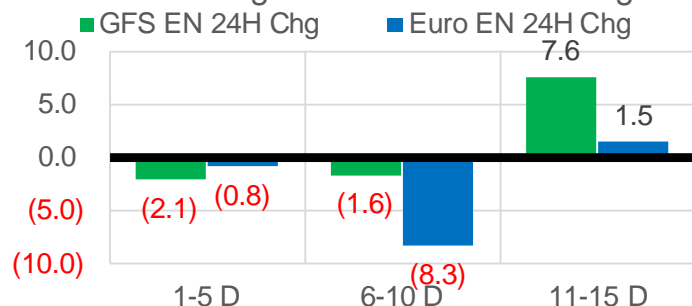
Vs. 12H Ago

L48 Region - 00z TDD vs 12H Ago



Vs. 24H Ago

L48 Region - 00z TDD vs 24H Ago



	Current	Δ from YD	Δ from 7D Avg
US Dry Production	97.7 ▲	0.12 ▲	1.14 ▲

	Current	Δ from YD	Δ from 7D Avg
US Power Burns	27.4 ▼	-0.06 ▲	0.43 ▲

	Current	Δ from YD	Δ from 7D Avg
US ResComm	31.7 ▼	-5.14 ▲	0.69 ▲

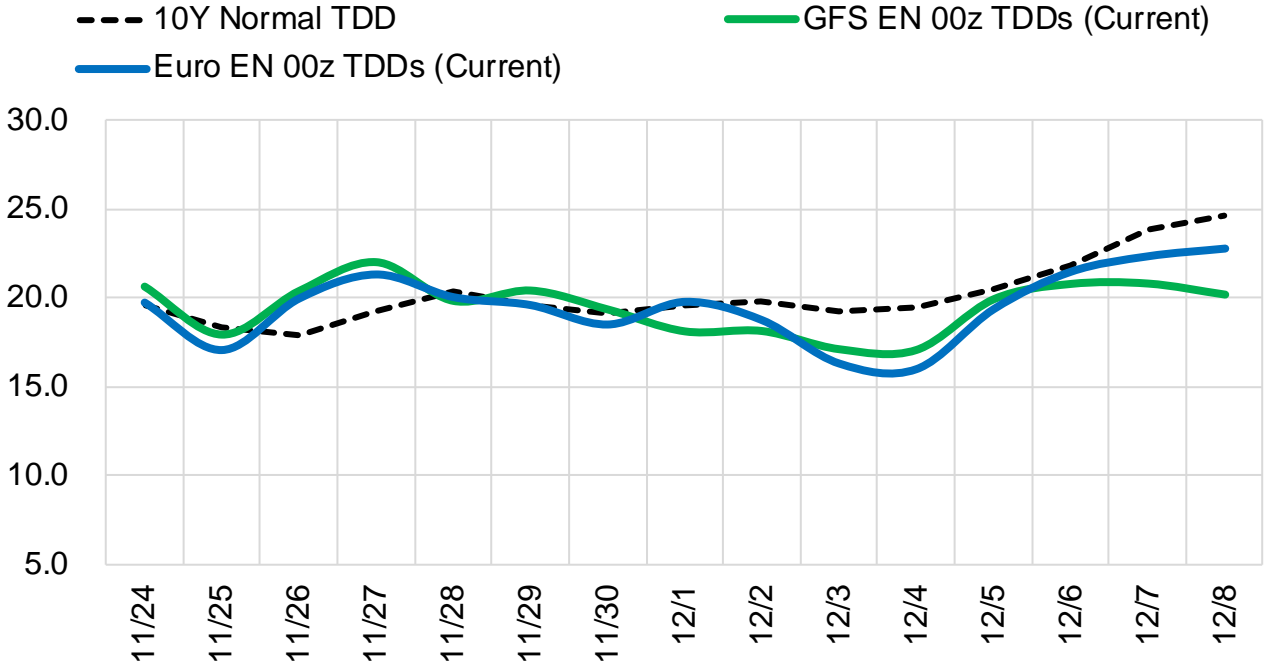
	Current	Δ from YD	Δ from 7D Avg
Canadian Imports	4.9 ▼	-1.13 ▼	-0.37 ▼

	Current	Δ from YD	Δ from 7D Avg
Net LNG Exports	11.7 ▲	0.43 ▲	0.13 ▲

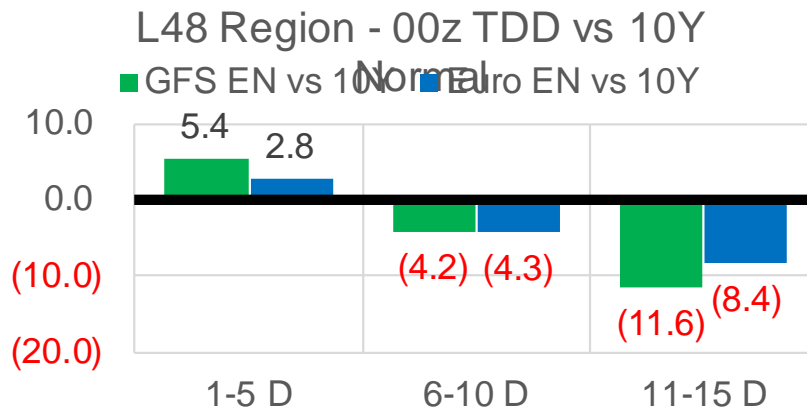
	Current	Δ from YD	Δ from 7D Avg
Mexican Exports	6.1 ▼	-0.13 ▲	0.06 ▲

Short-term Weather Model Outlooks (00z)

L48 Region



Vs. 10Y Normal



Source: WSI , Bloomberg

Lower 48 Component Models

Daily Balances

	18-Nov	19-Nov	20-Nov	21-Nov	22-Nov	23-Nov	24-Nov	DoD	vs. 7D
Lower 48 Dry Production	95.9	96.8	96.7	96.3	97.0	97.6	97.7	▲ 0.1	▲ 1.0
Canadian Imports	4.8	5.1	5.4	5.6	5.8	6.1	4.9	▼ -1.1	▼ -0.5
L48 Power	27.2	27.4	26.0	25.9	27.5	27.5	27.4	▼ -0.1	▲ 0.5
L48 Residential & Commercial	28.1	34.9	31.2	28.2	34.4	36.9	31.7	▼ -5.1	▼ -0.6
L48 Industrial	26.4	27.0	26.4	25.9	26.7	26.6	25.5	▼ -1.1	▼ -1.0
L48 Lease and Plant Fuel	5.2	5.3	5.3	5.2	5.3	5.3	5.3	▲ 0.0	▲ 0.1
L48 Pipeline Distribution	3.0	3.3	3.0	2.9	3.3	3.4	3.4	▲ 0.0	▲ 0.3
L48 Regional Gas Consumption	89.9	97.8	91.8	88.3	97.2	99.7	93.4	▼ -6.3	▼ -0.7
Net LNG Delivered	11.54	12.00	11.91	11.72	11.57	11.30	11.73	▲ 0.4	▲ 0.1
Total Mexican Exports	6.1	6.1	5.8	5.6	6.2	6.3	6.1	▼ -0.1	▲ 0.1
Implied Daily Storage Activity	-6.9	-14.0	-7.5	-3.7	-12.2	-13.5	-8.6		
EIA Reported Daily Storage Activity									
Daily Model Error									

EIA Storage Week Balances

	15-Oct	22-Oct	29-Oct	5-Nov	12-Nov	19-Nov	WoW	vs. 4W
Lower 48 Dry Production	94.7	94.6	95.7	96.3	97.1	96.4	▼ -0.7	▲ 0.5
Canadian Imports	5.0	5.6	5.6	5.5	5.1	4.9	▼ -0.2	▼ -0.6
L48 Power	31.7	29.0	29.0	29.5	27.3	27.2	▼ -0.2	▼ -1.5
L48 Residential & Commercial	9.5	13.9	17.7	24.1	23.4	27.9	▲ 4.5	▲ 8.1
L48 Industrial	21.5	20.5	20.9	22.8	23.0	25.8	▲ 2.8	▲ 4.0
L48 Lease and Plant Fuel	5.2	5.1	5.2	5.2	5.3	5.3	▼ 0.0	▲ 0.0
L48 Pipeline Distribution	2.2	2.3	2.5	2.9	2.7	2.9	▲ 0.2	▲ 0.3
L48 Regional Gas Consumption	70.2	70.8	75.3	84.5	81.7	89.1	▲ 7.3	▲ 11.0
Net LNG Exports	10.7	10.8	10.8	10.9	11.2	11.1	▼ -0.1	▲ 0.2
Total Mexican Exports	6.6	6.6	6.9	6.1	6.2	6.1	▼ -0.1	▼ -0.4
Implied Daily Storage Activity	12.2	12.0	8.3	0.4	3.1	-4.9	-8.1	
EIA Reported Daily Storage Activity	13.1	12.4	9.0	1.0	3.7			
Daily Model Error	-0.9	-0.5	-0.7	-0.6	-0.6			

Monthly Balances

	2Yr Ago Nov-19	LY Nov-20	Jul-21	Aug-21	Sep-21	Oct-21	MTD Nov-21	MoM	vs. LY
Lower 48 Dry Production	96.2	91.1	93.6	94.2	94.4	95.1	96.8	▲ 1.7	▲ 5.7
Canadian Imports	4.5	4.6	5.2	5.1	5.1	5.4	5.2	▼ -0.2	▲ 0.6
L48 Power	27.5	25.7	39.4	40.1	33.1	30.3	27.9	▼ -2.5	▲ 2.1
L48 Residential & Commercial	32.8	24.4	8.1	7.8	7.7	12.9	27.9	▲ 15.0	▲ 3.5
L48 Industrial	24.9	22.4	21.2	21.9	22.1	21.7	24.8	▲ 3.1	▲ 2.3
L48 Lease and Plant Fuel	5.2	5.0	5.1	5.1	5.2	5.2	5.3	▲ 0.1	▲ 0.3
L48 Pipeline Distribution	3.0	2.7	2.5	2.6	2.2	2.3	3.0	▲ 0.7	▲ 0.3
L48 Regional Gas Consumption	93.5	80.2	76.3	77.5	70.3	72.4	88.8	▲ 16.4	▲ 8.6
Net LNG Exports	7.2	10.1	10.8	10.5	10.3	10.6	11.2	▲ 0.6	▲ 1.1
Total Mexican Exports	5.2	6.1	7.1	6.9	6.7	6.6	6.1	▼ -0.6	▼ 0.0
Implied Daily Storage Activity	-5.1	-0.7	4.6	4.6	12.2	10.9	-4.1		
EIA Reported Daily Storage Activity									
Daily Model Error									

Source: Bloomberg, analytix.ai

Daily Average Generation Data

Nuclear Generation Daily Average - GWh (NRC)

	16-Nov	17-Nov	18-Nov	19-Nov	20-Nov	21-Nov	22-Nov	DoD	vs. 7D
NRC Nuclear Daily Output	84.1	85.2	84.8	83.9	83.7	85.8	86.3	0.4	1.7
NRC Nuclear Max Capacity	104.9	104.9	104.9	104.9	104.9	104.9	104.9	0.0	0.0
NRC Nuclear Outage	20.7	19.6	20.1	21.0	21.2	19.0	18.6	-0.4	-1.7
NRC % Nuclear Cap Utilization	85.6	86.7	86.2	85.3	85.1	87.3	87.7	0.4	1.7

Wind Generation Daily Average - MWh (EIA)

	16-Nov	17-Nov	18-Nov	19-Nov	20-Nov	21-Nov	22-Nov	DoD	vs. 7D
CALI Wind	2362	832	498	1518	1346	1455	600	-855	-735
TEXAS Wind	20787	19938	12471	15108	15689	14406	13940	-466	-2460
US Wind	73118	72121	55234	62465	45988	52884	51444	-1440	-8857

Generation Daily Average - MWh (EIA)

	16-Nov	17-Nov	18-Nov	19-Nov	20-Nov	21-Nov	22-Nov	DoD	vs. 7D
US Wind	73118	72121	55234	62465	45988	52884	51444	-1440	-8857
US Solar	8701	9421	8543	8690	9188	7457	7382	-75	-1284
US Petroleum	2436	1950	3020	3602	3230	2616	2609	-7	-200
US Other	7860	8050	7866	8367	8123	8064	8378	314	323
US Coal	77801	74590	78615	77051	84746	79972	82026	2053	3230
US Nuke	89358	89575	89059	88391	88819	90828	91156	328	1818
US Hydro	27274	27262	27921	28625	26387	25617	11258	-14358	-15922
US Gas	140863	137919	149820	155812	147932	134072	143659	9587	-745

See National Wind and Nuclear daily charts

Source: Bloomberg, analytix.ai

Storage Week Average Generation Data

Nuclear Generation Weekly Average - GWh (NRC)

	15-Oct	22-Oct	29-Oct	5-Nov	12-Nov	19-Nov	WoW	WoW Bcf/d Impact
NRC Nuclear Daily Output	76.5	73.6	71.6	72.2	79.8	83.9	4.1	-0.7
NRC Nuclear Max Capacity	104.9	104.9	104.9	104.9	104.9	104.9	0.0	
NRC Nuclear Outage	28.3	31.2	33.3	32.7	25.1	21.0	-4.1	
NRC % Nuclear Cap Utilization	0.1	0.1	0.1	0.1	0.1	0.1	0.0	

Wind Generation Weekly Average - MWh (EIA)

	15-Oct	22-Oct	29-Oct	5-Nov	12-Nov	19-Nov	WoW	WoW Bcf/d Impact
CALI Wind	2400	1270	2314	1669	1805	862	-943	0.2
TEXAS Wind	15396	10729	15462	8472	12032	13655	1624	-0.3
US Wind	49918	43721	49870	32116	51002	58367	7364	-1.3
					18886.8			
					59%			

Generation Weekly Average - MWh (EIA)

	15-Oct	22-Oct	29-Oct	5-Nov	12-Nov	19-Nov	WoW	WoW Bcf/d Impact
US Wind	49918	43721	49870	32116	51002	58367	7364	-1.3
US Solar	10530	12209	10138	9979	10015	9872	-143	0.0
US Petroleum	3224	3092	2815	3517	2532	2555	23	0.0
US Other	12221	12109	10196	9288	8202	7890	-312	0.1
US Coal	89841	74017	73355	77392	77955	77804	-151	0.0
US Nuke	77046	73748	73713	75510	84337	88331	3994	-0.7
US Hydro	24699	23105	23540	25530	25395	26226	831	-0.1
US Gas	162707	150057	152802	159071	145190	144795	-394	0.1

See National Wind and Nuclear daily charts

Source: Bloomberg, analytix.ai

Monthly Average Generation Data

Nuclear Generation Monthly Average - GWh (NRC)

	2Yr Ago	LY	MTD						
	Same 30 days	Same 30 days	Aug-21	Sep-21	Oct-21	Nov-21	Last 30 days	MoM (MTD vs LY)	Last 30 days YoY
	NRC Nuclear Daily Output	83.0	79.6	91.5	87.2	75.5	81.3	79.3	5.8
NRC Nuclear Max Capacity	104.9	104.9	104.9	104.9	104.9	104.9	104.9	0.0	0.0
NRC Nuclear Outage	21.9	25.3	13.4	17.7	29.4	23.6	25.6	-5.8	0.3
NRC % Nuclear Cap Utilization	84.4	80.9	93.0	88.7	76.8	82.7	80.6	5.9	-0.3

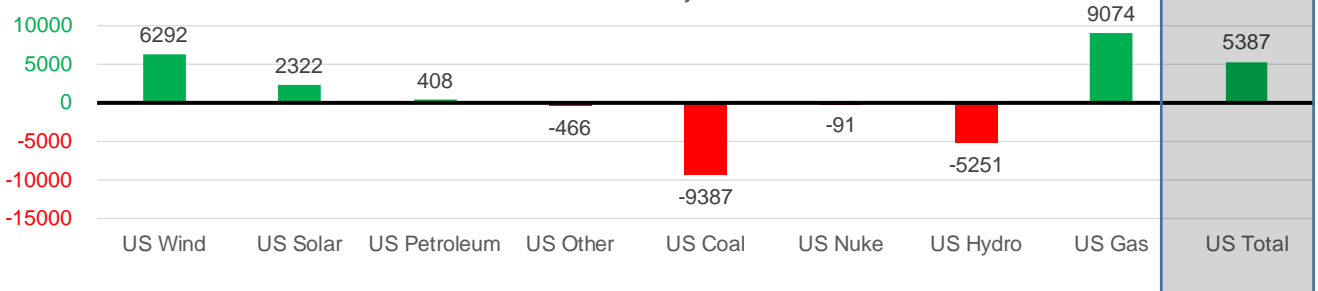
Wind Generation Monthly Average - MWh (EIA)

	2Yr Ago	LY	MTD						
	Same 30 days	Same 30 days	Aug-21	Sep-21	Oct-21	Nov-21	Last 30 days	MoM (MTD vs LY)	Last 30 days YoY
	CALI Wind	688	1139	2442	2020	1765	1305	1342	-461
TEXAS Wind	8638	9905	9901	9400	11565	12206	12857	641	2952
US Wind	34439	43806	35830	40223	40991	49299	50098	8308	6292

Generation Monthly Average - MWh (EIA)

	2Yr Ago	LY	MTD						
	Same 30 days	Same 30 days	Aug-21	Sep-21	Oct-21	Nov-21	Last 30 days	MoM (MTD vs LY)	Last 30 days YoY
	US Wind	34439	43806	35830	40223	40991	49299	50098	▲ 799.1
US Solar	5821	7259	13787	13382	11044	9307	9582	▲ 274.9	▲ 2322
US Petroleum	2798	2469	4484	2452	3238	2848	2878	▲ 30	▲ 408
US Other	8057	8971	9928	9008	11099	8407	8505	▲ 98	▼ -466
US Coal	102136	87367	137655	110037	82735	80025	77981	▼ -2044	▼ -9387
US Nuke	90155	83501	94062	90146	76700	85770	83410	▼ -2360	▼ -91
US Hydro	26918	29469	28533	25665	23895	24375	24218	▼ -158	▼ -5251
US Gas	150093	139696	210824	173538	158237	150156	148771	▼ -3361	▲ 9074
US Total	420666	403101	534937	464626	410686	412685	408488	▼ -7521	▲ 5387

Last 30 days YoY



See National Wind and Nuclear daily charts

Source: Bloomberg, analytix.ai

Regional S/D Models Storage Projection

Week Ending 19-Nov

	Daily Raw Storage	Daily Adjustment Factor	Daily Average Storage Activity (Adjusted) *	Weekly Adjusted Storage Activity
L48	-5.2	0.8	-4.4	-31
East	-1.8	0.4	-1.4	-10
Midwest	-2.6	0.9	-1.6	-11
Mountain	2.9	-3.4	-0.5	-4
South Central	-3.8	3.0	-0.8	-5
Pacific	0.1	-0.1	0.0	0

*Adjustment Factor is calculated based on historical regional deltas

U.S. underground natural gas storage facilities by type (July 2015)

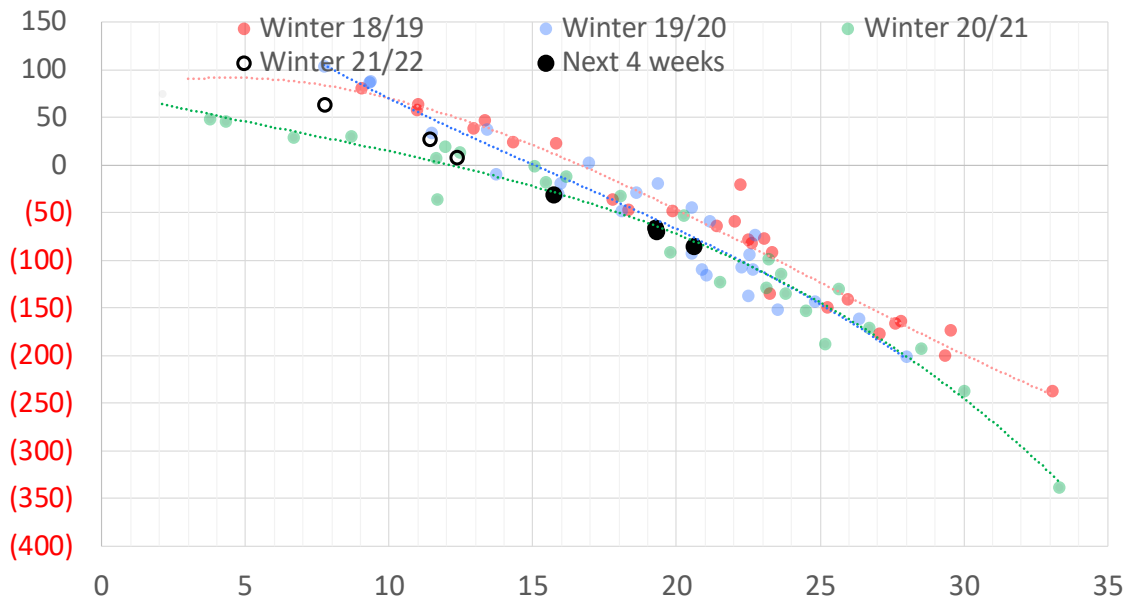


Weather Model Storage Projection

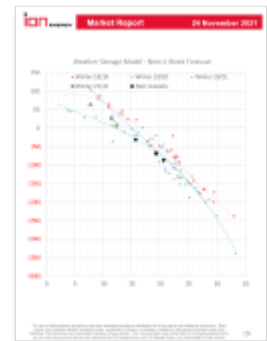
Next report
and beyond

Week Ending	GWDDs	Week Storage Projection
19-Nov	15.7	-31
26-Nov	19	-66
03-Dec	19	-69
10-Dec	21	-86

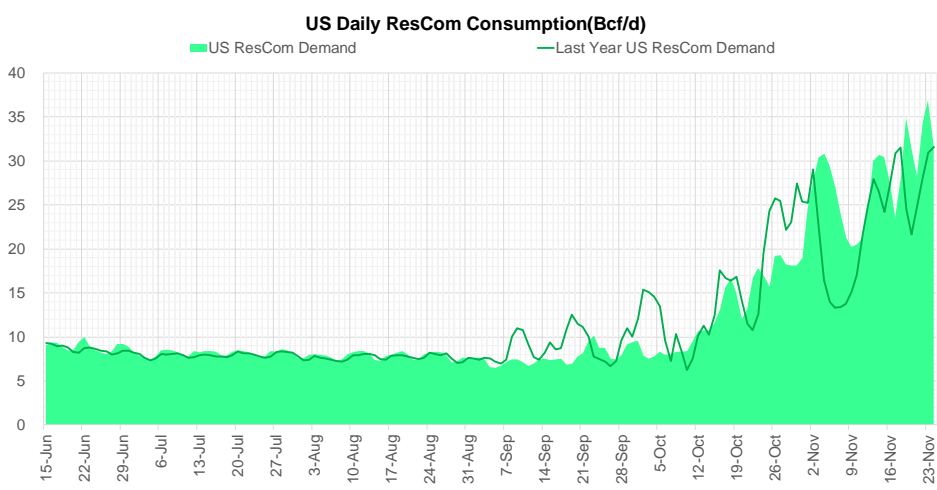
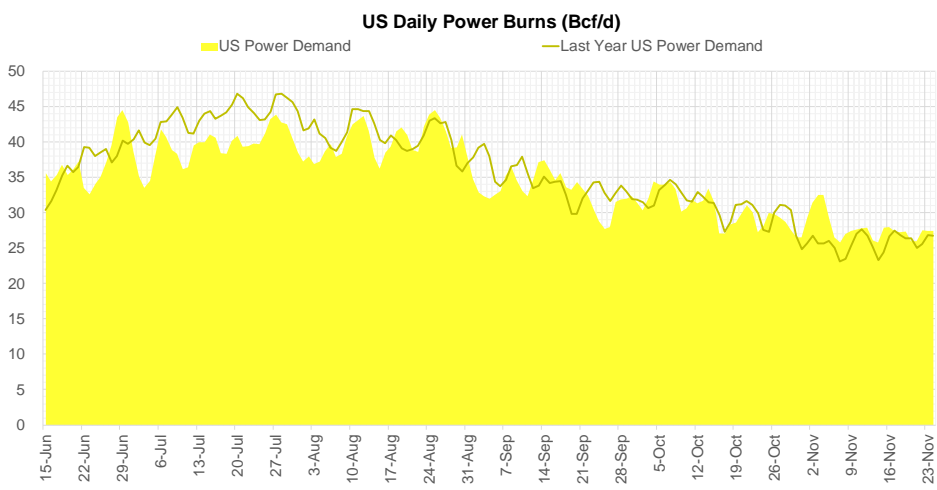
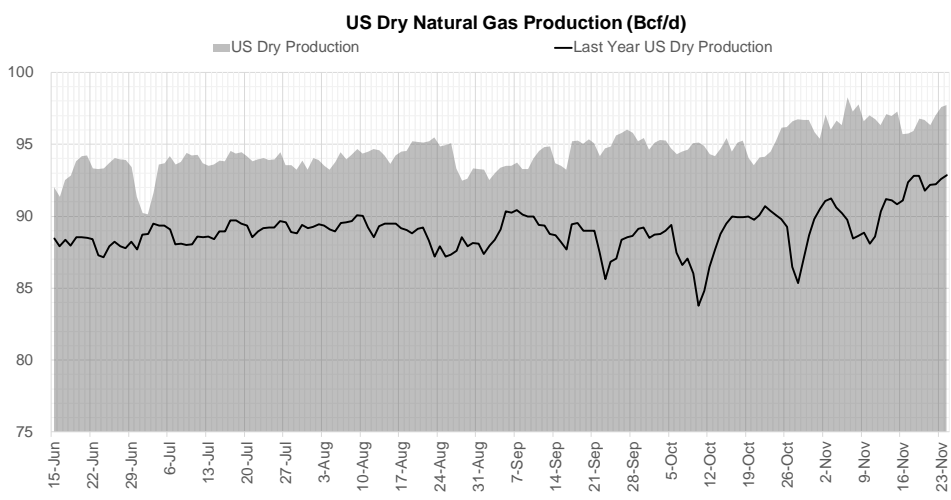
Weather Storage Model - Next 4 Week Forecast



Go to larger image



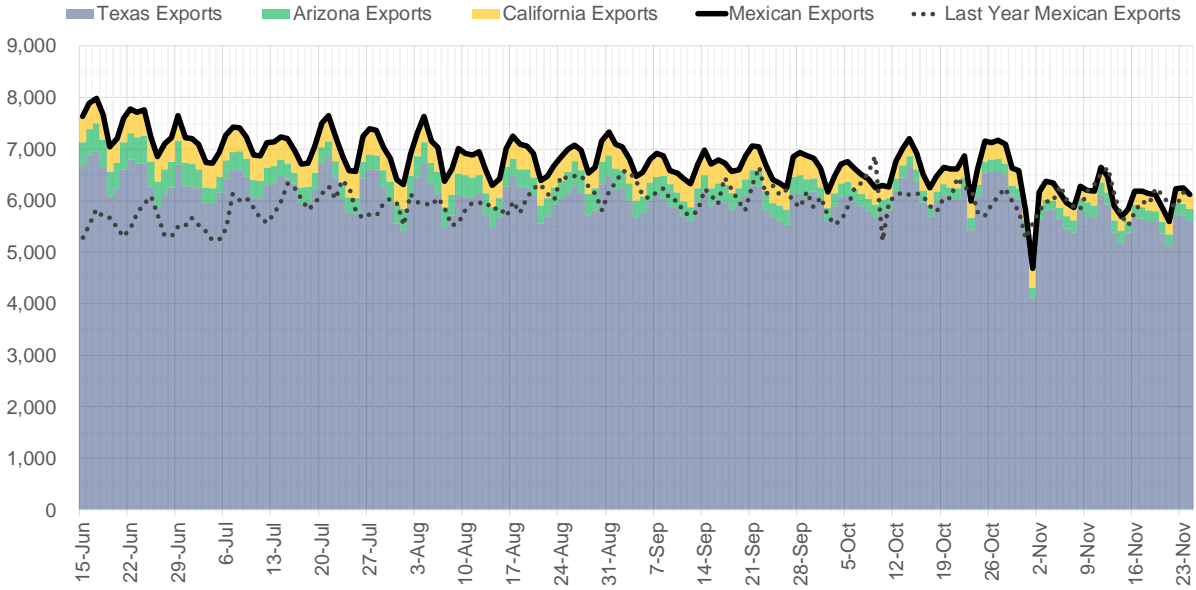
Supply – Demand Trends



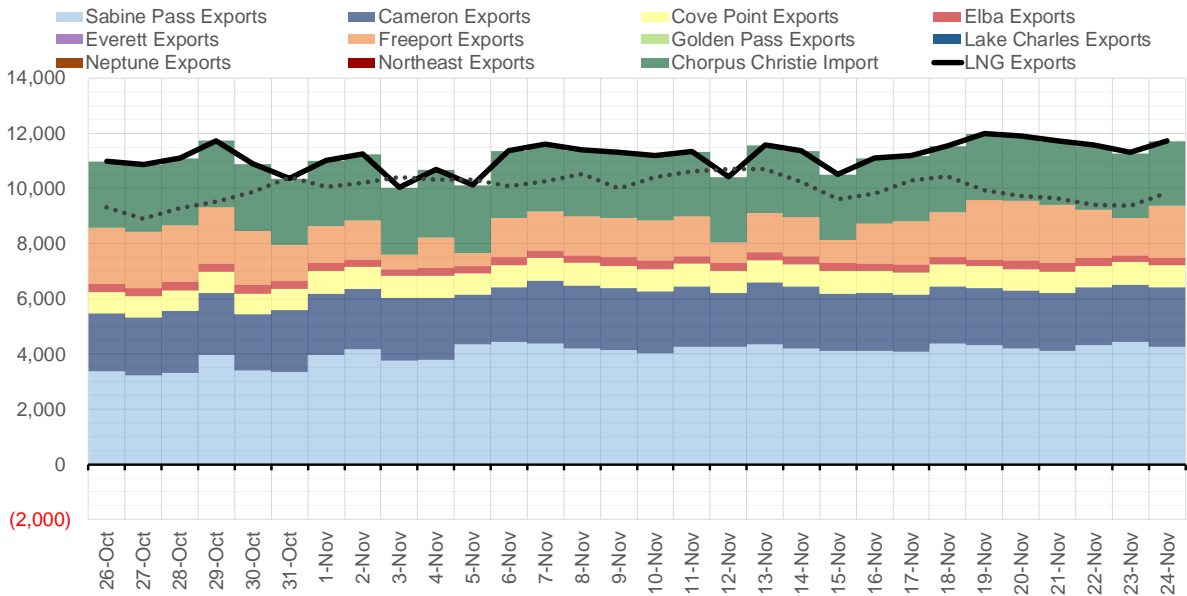
Source: Bloomberg

The risk of trading futures and options and other derivatives involves a substantial risk of loss and is not suitable for all persons. Each person must consider whether a particular trade, combination of trades, or strategy is suitable for that person's financial means and objectives. Past results are not necessarily indicative of future results. This communication may contain links to third party websites which are not under the control of and are not maintained by ION Energy Group, and ION Energy Group is not responsible for their content.

Mexican Exports (MMcf/d)



Net LNG Exports - Last 30 days (MMcf/d)



Source: Bloomberg

The risk of trading futures and options and other derivatives involves a substantial risk of loss and is not suitable for all persons. Each person must consider whether a particular trade, combination of trades, or strategy is suitable for that person's financial means and objectives. Past results are not necessarily indicative of future results. This communication may contain links to third party websites which are not under the control of and are not maintained by ION Energy Group, and ION Energy Group is not responsible for their content.

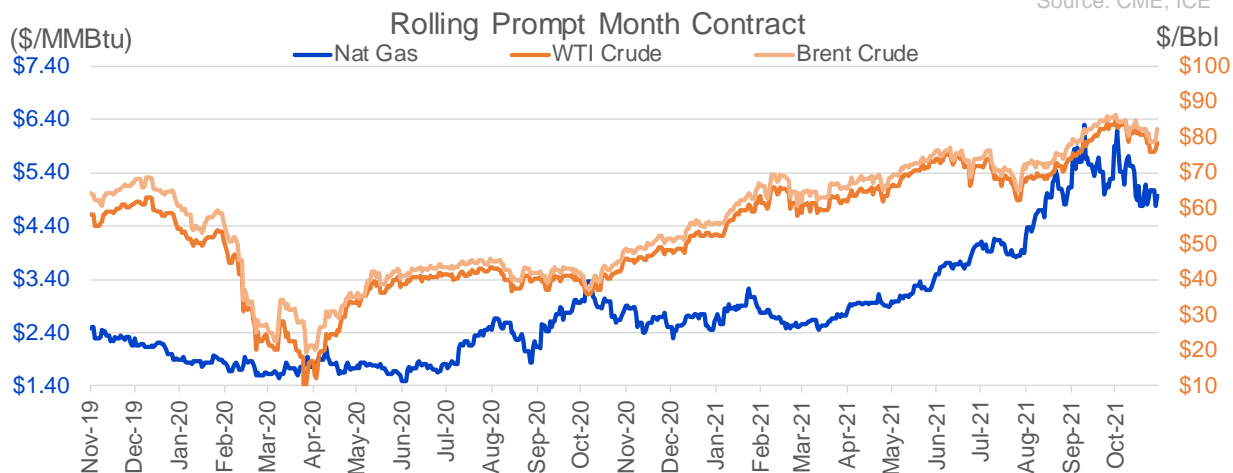
Nat Gas Options Volume and Open Interest CME, ICE and Nasdaq Combined

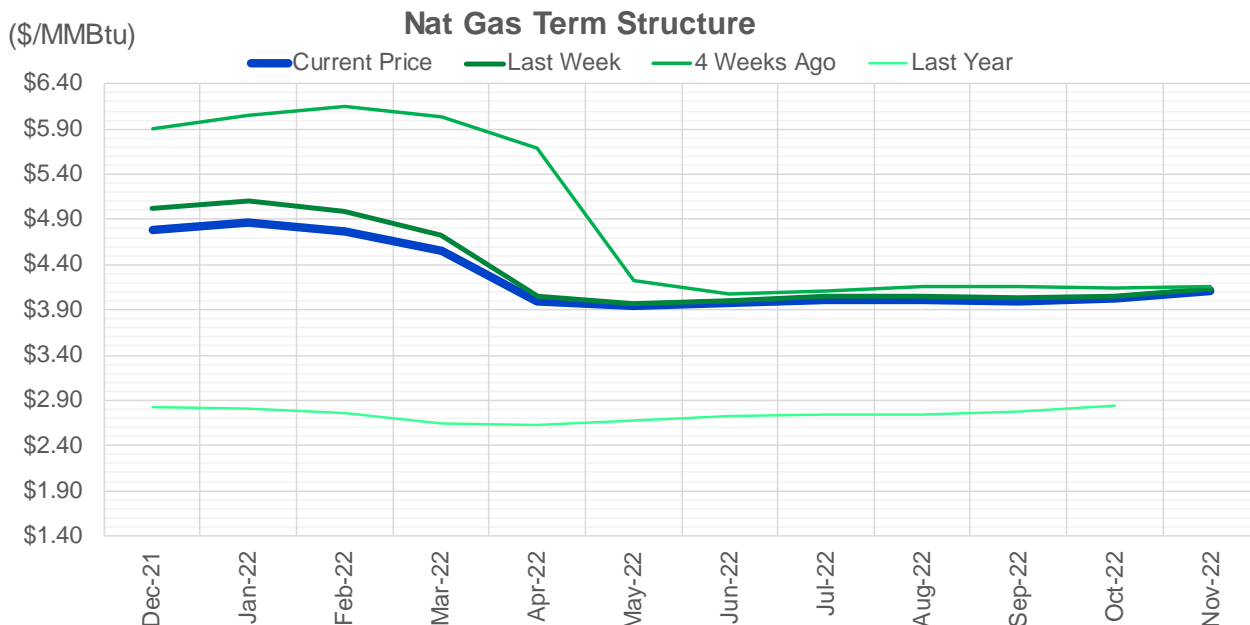
CONTRACT MONTH	CONTRACT YEAR	PUT/CALL	STRIKE	CUMULATIVE VOL	CONTRACT MONTH	CONTRACT YEAR	PUT/CALL	STRIKE	CUMULATIVE OI
1	2022	C	7.00	3323	12	2021	P	2.75	54612
12	2021	C	5.00	3204	12	2021	P	4.00	43832
12	2021	P	4.75	3148	12	2021	P	3.00	39984
1	2022	P	4.00	2924	12	2021	P	2.50	39420
12	2021	P	4.50	2673	3	2022	C	10.00	35998
1	2022	P	4.25	2599	12	2021	P	3.50	33450
1	2022	C	9.00	2557	12	2021	C	6.00	26100
1	2022	P	3.75	2510	3	2022	C	8.00	25977
12	2021	P	5.00	2276	12	2021	P	4.25	25242
1	2022	C	10.00	2228	12	2021	P	5.00	23938
12	2021	C	5.25	2118	12	2021	C	7.00	23343
1	2022	C	8.00	1893	1	2022	P	2.75	23233
12	2021	P	4.90	1632	3	2022	C	5.00	22725
2	2022	C	10.00	1556	1	2022	P	3.00	22599
12	2021	C	5.50	1553	1	2022	C	6.00	22556
1	2022	C	5.30	1510	12	2021	C	4.00	22526
1	2022	C	5.40	1505	12	2021	C	8.00	20716
1	2022	P	4.50	1248	4	2022	C	3.00	19710
3	2022	C	6.00	1222	3	2022	P	2.50	18939
1	2022	C	6.00	1049	1	2022	C	5.00	18616
12	2021	C	5.40	1009	3	2022	P	3.50	18289
5	2022	C	4.05	1000	3	2022	C	6.00	18138
5	2022	P	4.05	1000	1	2022	C	7.00	18024
3	2022	P	4.00	831	1	2022	P	3.50	17793
12	2021	P	4.70	790	2	2022	C	5.00	17743
3	2022	C	8.00	770	3	2022	P	4.00	17552
12	2021	C	5.20	726	12	2021	P	2.00	16834
4	2023	P	3.00	650	4	2022	C	5.00	16798
5	2023	P	3.00	650	12	2021	P	4.50	16755
6	2023	P	3.00	650	3	2022	P	3.00	16558
7	2023	P	3.00	650	12	2021	C	5.00	16085
8	2023	P	3.00	650	12	2022	C	5.00	16047
9	2023	P	3.00	650	12	2021	C	5.50	15640
10	2023	P	3.00	650	3	2022	C	4.00	15506
12	2021	P	4.80	640	4	2022	P	2.50	15264
12	2021	C	5.60	618	2	2022	P	3.50	15234
12	2021	C	5.10	606	1	2022	C	10.00	14766
2	2022	C	8.00	606	2	2022	C	6.00	14718
12	2021	P	4.60	601	1	2022	P	4.00	14613
12	2021	C	5.30	595	1	2022	C	8.00	14560
7	2022	C	5.00	575	1	2022	C	4.00	14369
8	2022	C	5.00	575	3	2022	P	5.00	14002
9	2022	C	5.00	575	5	2022	C	3.00	13733
10	2022	C	5.00	575	3	2022	C	7.00	13687
12	2021	C	5.55	569	12	2021	C	15.00	13491
2	2022	C	12.00	557	6	2022	C	3.00	13438
1	2022	C	5.50	542	12	2022	C	4.50	13392
3	2022	C	10.00	527	2	2022	C	10.00	13386
12	2021	C	4.90	520	6	2022	C	5.00	13307
					12	2022	C	5.25	13263

Source: CME, ICE

Nat Gas Futures Open Interest CME, and ICE Combined

CME Henry Hub Futures (10,000 MMBtu)				ICE Henry Hub Futures Contract Equivalent (10,000 MM			
	Current	Prior	Daily Change		Current	Prior	Daily Change
DEC 21	16695	24003	-7308	DEC 21	84422	81066	3356
JAN 22	260464	264117	-3653	JAN 22	100384	101028	-644
FEB 22	79437	78983	454	FEB 22	70896	70845	52
MAR 22	168116	166393	1723	MAR 22	78140	79211	-1071
APR 22	118867	118055	812	APR 22	77123	75908	1215
MAY 22	137394	137050	344	MAY 22	72377	72519	-142
JUN 22	45094	44990	104	JUN 22	54894	54652	243
JUL 22	43021	43262	-241	JUL 22	56630	56285	345
AUG 22	32158	31962	196	AUG 22	55111	54632	479
SEP 22	37832	37690	142	SEP 22	56075	55681	394
OCT 22	87738	87483	255	OCT 22	62465	62043	423
NOV 22	35219	35265	-46	NOV 22	47640	47480	160
DEC 22	27324	27490	-166	DEC 22	51127	50640	488
JAN 23	34273	34674	-401	JAN 23	40861	40697	164
FEB 23	11513	11446	67	FEB 23	33418	33356	62
MAR 23	27278	26588	690	MAR 23	37772	37372	400
APR 23	19491	19099	392	APR 23	39521	39401	120
MAY 23	11201	10956	245	MAY 23	35256	35165	91
JUN 23	9150	9077	73	JUN 23	31738	31573	165
JUL 23	6551	6559	-8	JUL 23	31525	31388	137
AUG 23	4988	5020	-32	AUG 23	32643	32456	187
SEP 23	6658	6656	2	SEP 23	30804	30651	153
OCT 23	10618	10683	-65	OCT 23	34834	34262	572
NOV 23	5522	5505	17	NOV 23	33804	33669	135
DEC 23	8471	8493	-22	DEC 23	31235	31182	53
JAN 24	5068	5080	-12	JAN 24	20417	20466	-49
FEB 24	1460	1450	10	FEB 24	15419	15340	80
MAR 24	8704	8700	4	MAR 24	20572	20492	81
APR 24	4871	4868	3	APR 24	14513	14490	24
MAY 24	1998	1998	0	MAY 24	15141	15055	86





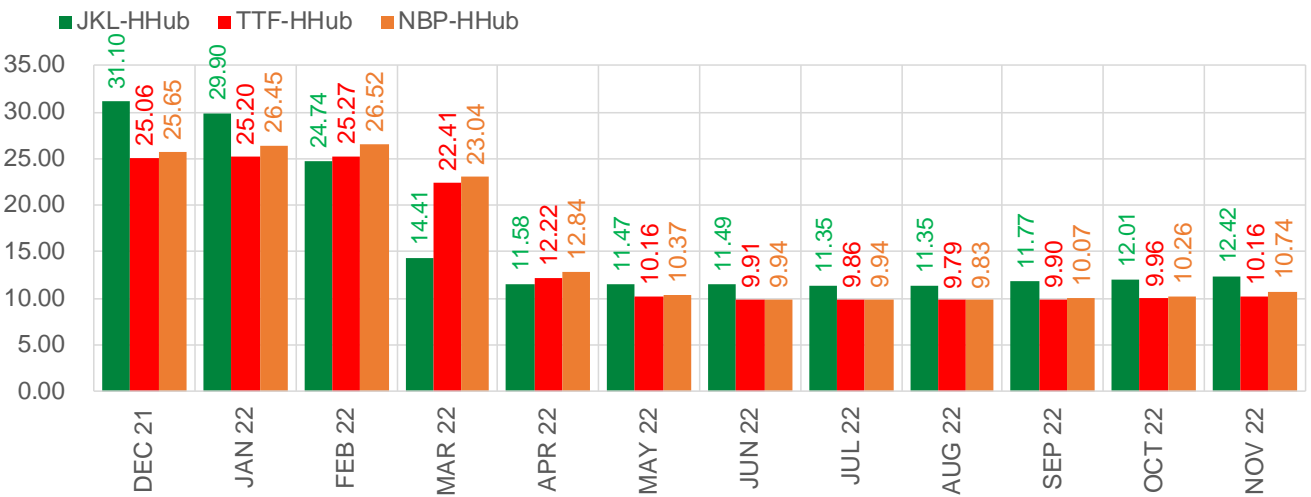
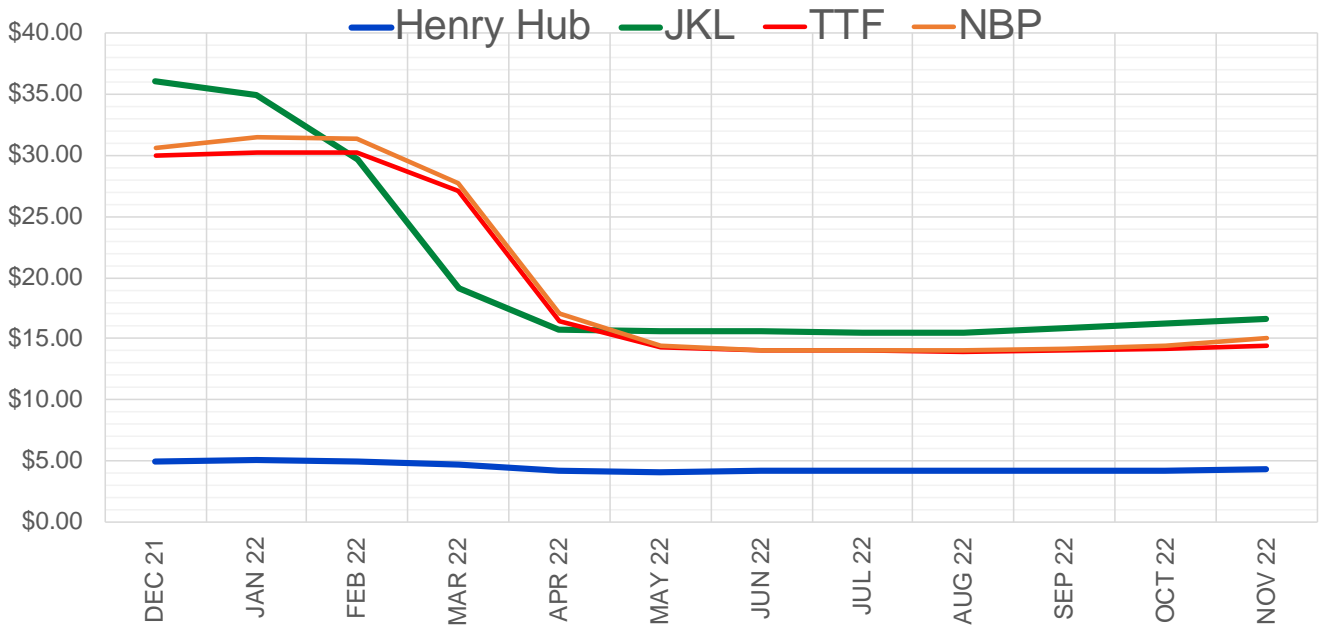
	Dec-21	Jan-22	Feb-22	Mar-22	Apr-22	May-22	Jun-22	Jul-22	Aug-22	Sep-22	Oct-22	Nov-22
Current Price	\$4.789	\$4.861	\$4.769	\$4.555	\$3.998	\$3.940	\$3.970	\$4.013	\$4.017	\$3.996	\$4.022	\$4.102
Last Week	\$5.017	\$5.104	\$4.991	\$4.718	\$4.045	\$3.973	\$4.004	\$4.048	\$4.051	\$4.028	\$4.054	\$4.131
vs. Last Week	-\$0.228	-\$0.243	-\$0.222	-\$0.163	-\$0.047	-\$0.033	-\$0.034	-\$0.035	-\$0.034	-\$0.032	-\$0.032	-\$0.029
4 Weeks Ago	\$5.898	\$6.056	\$6.149	\$6.039	\$5.688	\$4.220	\$4.080	\$4.115	\$4.154	\$4.156	\$4.134	\$4.163
vs. 4 Weeks Ago	-\$1.109	-\$1.195	-\$1.380	-\$1.484	-\$1.690	-\$0.280	-\$0.110	-\$0.102	-\$0.137	-\$0.160	-\$0.112	-\$0.061
Last Year	\$2.711	\$2.823	\$2.806	\$2.751	\$2.637	\$2.628	\$2.671	\$2.727	\$2.749	\$2.745	\$2.775	\$2.847
vs. Last Year	\$2.078	\$2.038	\$1.963	\$1.804	\$1.361	\$1.312	\$1.299	\$1.286	\$1.268	\$1.251	\$1.247	\$1.255

	Units	Cash Settled	Prompt Settle	Cash to Prompt
AGT Citygate	\$/MMBtu	5.85	13.47	7.62
TETCO M3	\$/MMBtu	4.72	6.44	1.72
FGT Zone 3	\$/MMBtu	7.29	5.26	-2.03
Zone 6 NY	\$/MMBtu	7.29	6.98	-0.31
Chicago Citygate	\$/MMBtu	4.70	5.36	0.66
Michcon	\$/MMBtu	4.71	4.91	0.20
Columbia TCO Pool	\$/MMBtu	4.56	4.63	0.07
Ventura	\$/MMBtu	4.51	5.56	1.05
Rockies/Opal	\$/MMBtu	4.80	5.12	0.32
El Paso Permian Basin	\$/MMBtu	4.44	5.09	0.65
Socal Citygate	\$/MMBtu	5.51	5.95	0.44
Malin	\$/MMBtu	5.06	5.78	0.72
Houston Ship Channel	\$/MMBtu	4.43	5.34	0.91
Henry Hub Cash	\$/MMBtu	4.90	5.00	0.10
AECO Cash	C\$/GJ	3.41	4.30	0.89
Station2 Cash	C\$/GJ	3.39	6.29	2.90
Dawn Cash	C\$/GJ	4.81	5.03	0.22

Source: CME, Bloomberg

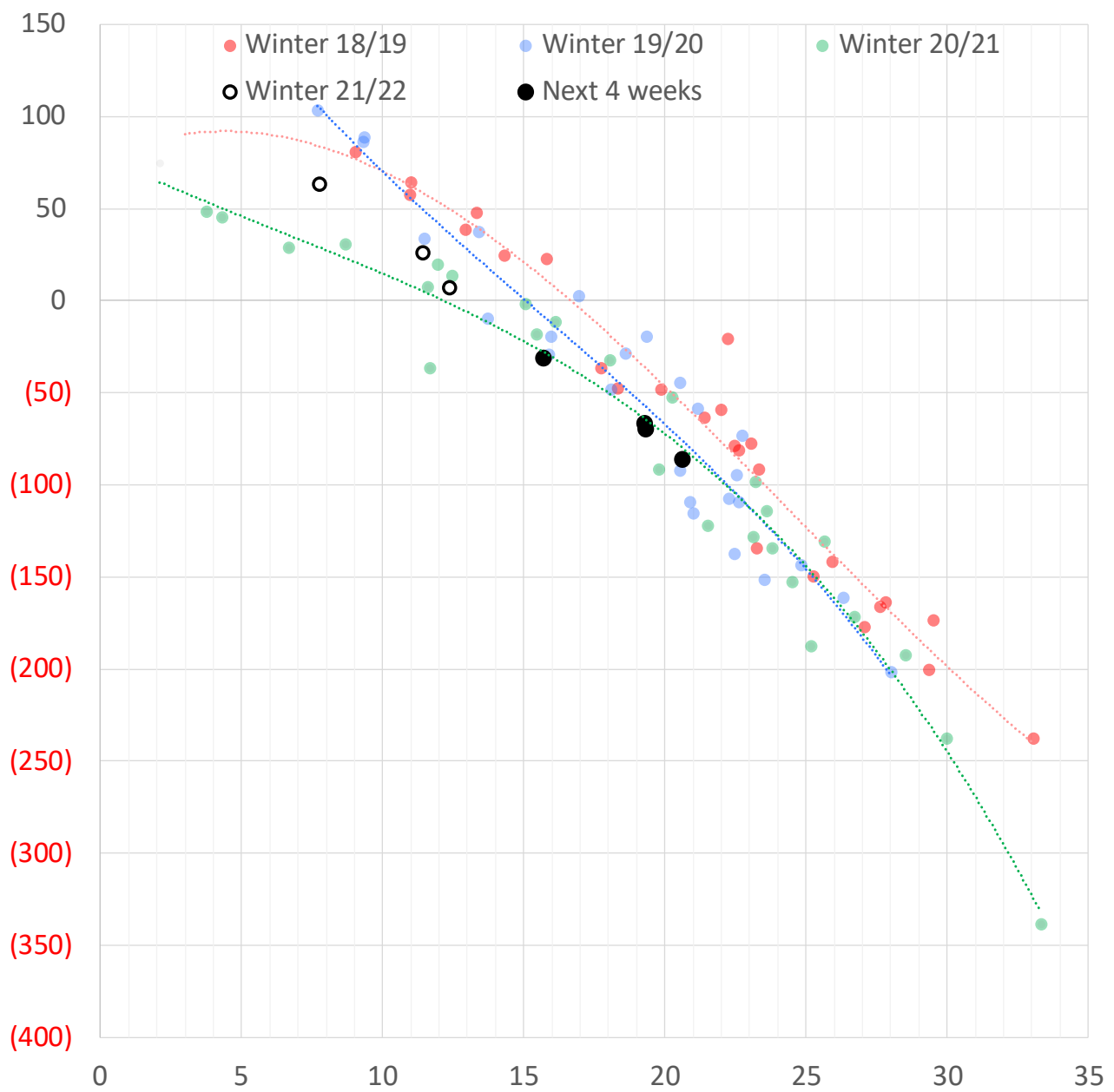
	Units	Current Price	vs. Last Week	vs. 4 Weeks Ago	vs. Last Year
NatGas Jul21/Oct21	\$/MMBtu	2.224	▲ 0.000	▲ 0.000	▲ 2.176
NatGas Oct21/Nov21	\$/MMBtu	0.361	▲ 0.000	▲ 0.320	▲ 0.287
NatGas Oct21/Jan22	\$/MMBtu	-0.806	▼ -0.235	▼ -1.058	▼ -1.126
NatGas Apr22/Oct22	\$/MMBtu	0.016	▲ 0.019	▲ 0.064	▼ -0.023
WTI Crude	\$/Bbl	78.50	▼ -2.260	▼ -6.150	▲ 33.590
Brent Crude	\$/Bbl	82.31	▼ -0.120	▼ -4.090	▲ 34.450
Fuel Oil, NY Harbour 1%	\$/Bbl	97.18	▲ 0.000	▲ 0.000	▲ 0.000
Heating Oil	cents/Gallon	238.43	▼ -4.660	▼ -19.300	▲ 102.480
Propane, Mt. Bel	cents/Gallon	1.27	▼ -0.029	▼ -0.180	▲ 0.727
Ethane, Mt. Bel	cents/Gallon	0.40	▼ -0.010	▼ -0.032	▲ 0.188
Coal, PRB	\$/MTon	12.30	▲ 0.000	▲ 0.000	▲ 0.000
Coal, PRB	\$/MMBtu	0.70			
Coal, ILB	\$/MTon	31.05	▲ 0.000	▲ 0.000	▲ 0.000
Coal, ILB	\$/MMBtu	1.32			

Nat Gas Term Structure (\$MMBTU)



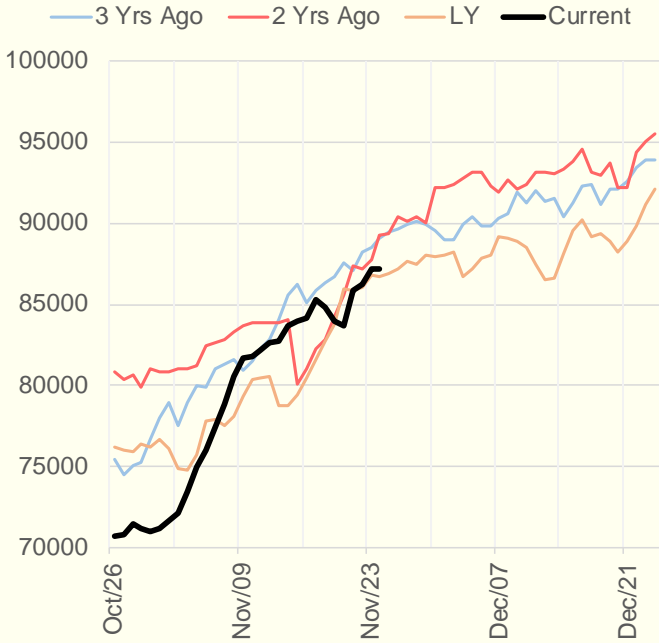
	DEC 21	JAN 22	FEB 22	MAR 22	APR 22	MAY 22	JUN 22	JUL 22	AUG 22	SEP 22	OCT 22	NOV 22
Henry Hub	\$4.972	\$5.036	\$4.923	\$4.714	\$4.157	\$4.093	\$4.121	\$4.156	\$4.159	\$4.140	\$4.175	\$4.258
JKL	\$36.075	\$34.935	\$29.665	\$19.120	\$15.740	\$15.560	\$15.615	\$15.510	\$15.505	\$15.910	\$16.185	\$16.680
JKL-HHub	\$31.103	\$29.899	\$24.742	\$14.406	\$11.583	\$11.467	\$11.494	\$11.354	\$11.346	\$11.770	\$12.010	\$12.422
TTF	\$30.033	\$30.234	\$30.193	\$27.125	\$16.374	\$14.248	\$14.029	\$14.012	\$13.949	\$14.039	\$14.137	\$14.418
TTF-HHub	\$25.061	\$25.198	\$25.270	\$22.411	\$12.217	\$10.155	\$9.908	\$9.856	\$9.790	\$9.899	\$9.962	\$10.160
NBP	\$30.622	\$31.482	\$31.445	\$27.750	\$17.000	\$14.459	\$14.064	\$14.096	\$13.989	\$14.207	\$14.435	\$15.002
NBP-HHub	\$25.650	\$26.446	\$26.522	\$23.036	\$12.843	\$10.366	\$9.943	\$9.940	\$9.830	\$10.067	\$10.260	\$10.744

Weather Storage Model - Next 4 Week Forecast

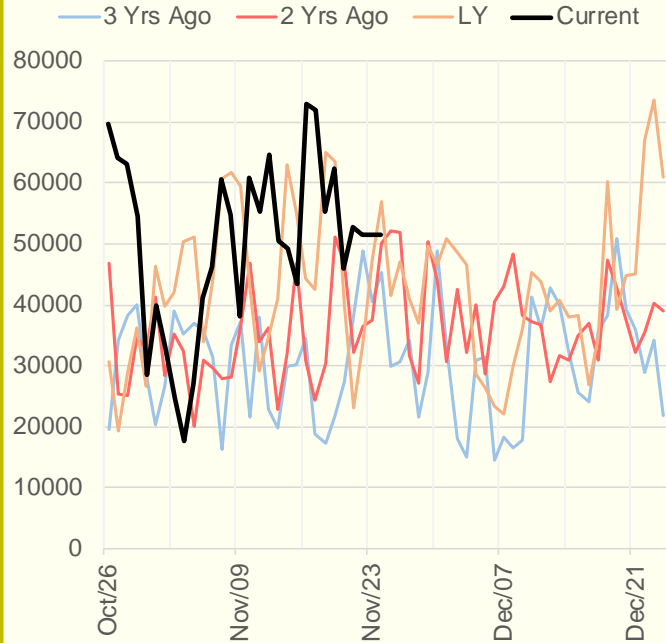


The risk of trading futures and options and other derivatives involves a substantial risk of loss and is not suitable for all persons. Each person must consider whether a particular trade, combination of trades, or strategy is suitable for that person's financial means and objectives. Past results are not necessarily indicative of future results. This communication may contain links to third party websites which are not under the control of and are not maintained by ION Energy Group, and ION Energy Group is not responsible for their content.

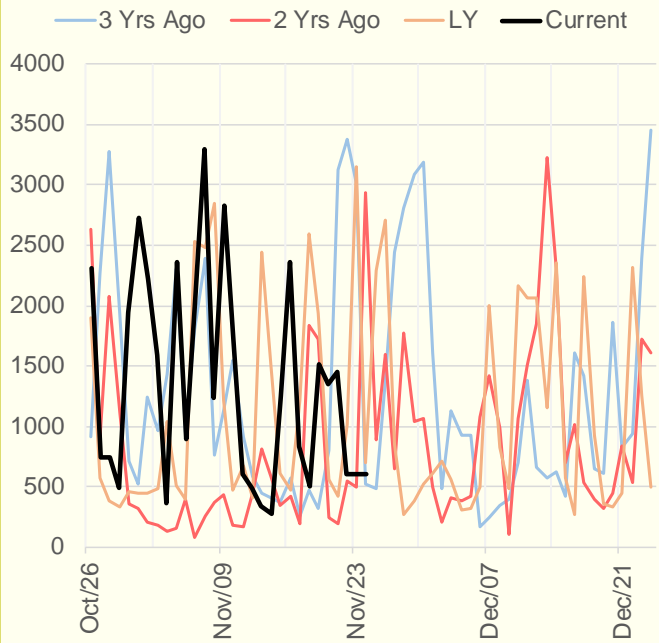
NRC Nuclear Daily Output



US Wind



CALI Wind



TEXAS Wind

