

	Current	Δ from YD	Δ from 7D Avg
Nat Gas Prompt	\$ 5.01	▼ \$ (0.17)	▲ \$ 0.07

	Current	Δ from YD	Δ from 7D Avg
WTI Prompt	\$ 80.20	▼ \$ (0.56)	▼ \$ (0.8)

	Current	Δ from YD	Δ from 7D Avg
Brent Prompt	\$ 81.91	▼ \$ (0.52)	▼ \$ (0.4)

### Page Menu

[Short-term Weather Model Outlooks](#)

[Lower 48 Component Models](#)

[Regional S/D Models Storage Projection](#)

[Weather Model Storage Projection](#)

[Supply – Demand Trends](#)

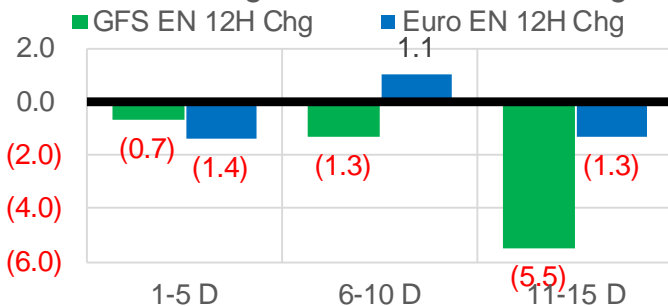
[Nat Gas Options Volume and Open Interest](#)

[Nat Gas Futures Open Interest](#)

[Price Summary](#)

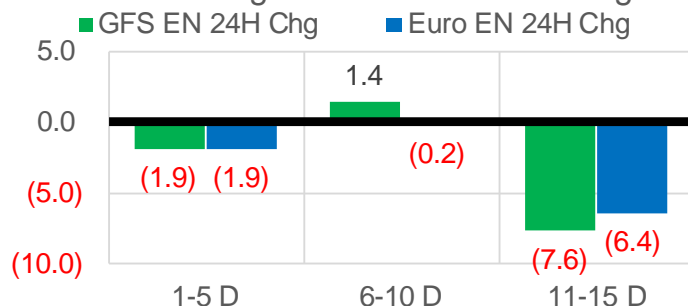
### Vs. 12H Ago

L48 Region - 00z TDD vs 12H Ago



### Vs. 24H Ago

L48 Region - 00z TDD vs 24H Ago



	Current	Δ from YD	Δ from 7D Avg
US Dry Production	95.3	▼ -0.39	▼ -1.56

	Current	Δ from YD	Δ from 7D Avg
US Power Burns	27.3	▼ -0.61	▲ 0.02

	Current	Δ from YD	Δ from 7D Avg
US ResComm	22.0	▼ -5.06	▼ -4.30

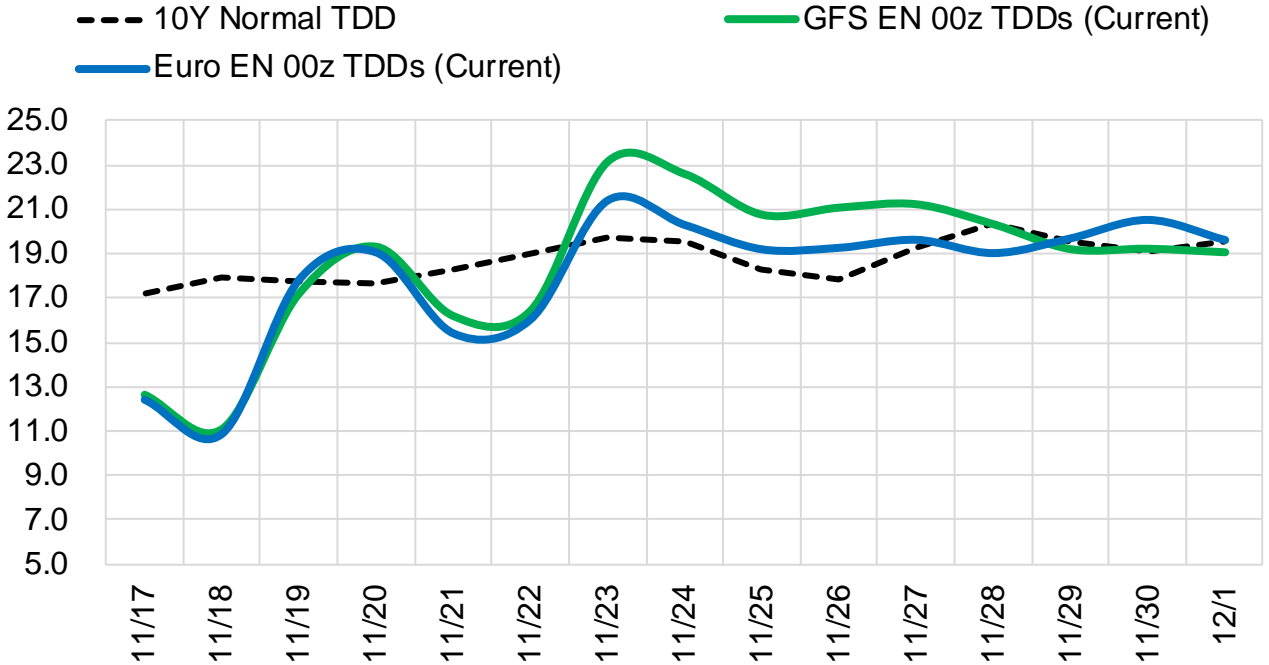
	Current	Δ from YD	Δ from 7D Avg
Canadian Imports	4.2	▼ -0.83	▼ -0.66

	Current	Δ from YD	Δ from 7D Avg
Net LNG Exports	11.2	▲ 0.14	▲ 0.16

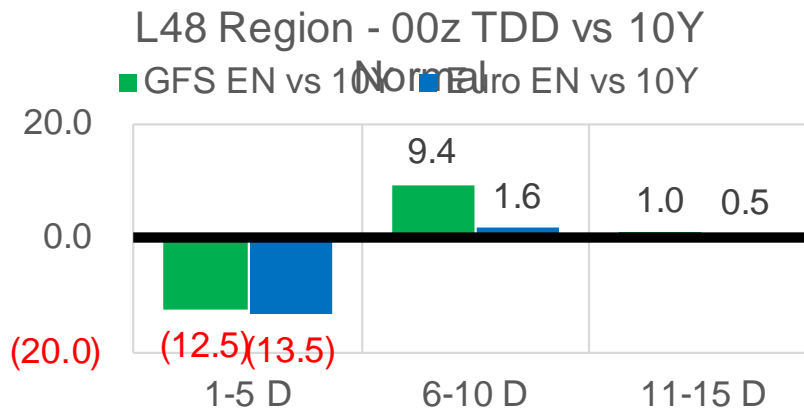
	Current	Δ from YD	Δ from 7D Avg
Mexican Exports	6.2	▲ 0.02	▲ 0.06

## Short-term Weather Model Outlooks (00z)

### L48 Region



## Vs. 10Y Normal



Source: WSI , Bloomberg

## Lower 48 Component Models

### Daily Balances

	11-Nov	12-Nov	13-Nov	14-Nov	15-Nov	16-Nov	17-Nov	DoD	vs. 7D
<b>Lower 48 Dry Production</b>	<b>97.0</b>	<b>96.5</b>	<b>97.3</b>	<b>97.0</b>	<b>97.3</b>	<b>95.7</b>	<b>95.3</b>	▼ -0.4	▼ -1.5
<b>Canadian Imports</b>	<b>4.3</b>	<b>4.4</b>	<b>4.9</b>	<b>5.3</b>	<b>5.4</b>	<b>5.0</b>	<b>4.2</b>	▼ -0.8	▼ -0.7
L48 Power	27.8	27.9	26.1	25.8	27.9	27.9	27.3	▼ -0.6	▲ 0.1
L48 Residential & Commercial	21.2	24.8	30.1	30.6	30.0	27.1	22.0	▼ -5.1	▼ -5.3
L48 Industrial	23.2	24.4	25.3	25.5	25.5	24.6	23.9	▼ -0.7	▼ -0.8
L48 Lease and Plant Fuel	5.3	5.3	5.3	5.3	5.3	5.2	5.1	▼ -0.1	▼ -0.1
L48 Pipeline Distribution	2.6	2.8	3.0	3.0	3.1	2.9	2.6	▼ -0.3	▼ -0.3
<b>L48 Regional Gas Consumption</b>	<b>80.1</b>	<b>85.1</b>	<b>89.8</b>	<b>90.2</b>	<b>91.8</b>	<b>87.8</b>	<b>81.0</b>	▼ -6.8	▼ -6.4
<b>Net LNG Delivered</b>	<b>11.35</b>	<b>10.42</b>	<b>11.57</b>	<b>11.38</b>	<b>10.50</b>	<b>11.09</b>	<b>11.23</b>	▲ 0.1	▲ 0.2
<b>Total Mexican Exports</b>	<b>6.5</b>	<b>6.5</b>	<b>5.9</b>	<b>5.7</b>	<b>5.7</b>	<b>6.1</b>	<b>6.2</b>	▲ 0.0	▲ 0.1
<b>Implied Daily Storage Activity</b>	<b>3.2</b>	<b>-1.1</b>	<b>-5.1</b>	<b>-5.0</b>	<b>-5.3</b>	<b>-4.4</b>	<b>1.0</b>		
<b>EIA Reported Daily Storage Activity</b>									
<b>Daily Model Error</b>									

### EIA Storage Week Balances

	8-Oct	15-Oct	22-Oct	29-Oct	5-Nov	12-Nov	WoW	vs. 4W
<b>Lower 48 Dry Production</b>	<b>94.9</b>	<b>94.8</b>	<b>94.6</b>	<b>95.7</b>	<b>96.5</b>	<b>97.3</b>	▲ 0.9	▲ 1.9
<b>Canadian Imports</b>	<b>5.3</b>	<b>5.0</b>	<b>5.6</b>	<b>5.6</b>	<b>5.5</b>	<b>5.1</b>	▼ -0.4	▼ -0.3
L48 Power	32.9	31.7	29.0	29.0	29.5	27.3	▼ -2.1	▼ -2.5
L48 Residential & Commercial	8.2	9.5	13.9	17.7	24.1	23.5	▼ -0.7	▲ 7.2
L48 Industrial	23.8	21.6	20.5	21.0	22.8	22.7	▼ -0.1	▲ 1.2
L48 Lease and Plant Fuel	5.2	5.2	5.2	5.2	5.3	5.3	▲ 0.0	▲ 0.1
L48 Pipeline Distribution	2.2	2.2	2.3	2.5	2.9	2.7	▼ -0.2	▲ 0.2
<b>L48 Regional Gas Consumption</b>	<b>72.2</b>	<b>70.2</b>	<b>70.9</b>	<b>75.4</b>	<b>84.6</b>	<b>81.5</b>	▼ -3.1	▲ 6.2
<b>Net LNG Exports</b>	<b>9.9</b>	<b>10.7</b>	<b>10.8</b>	<b>10.8</b>	<b>10.9</b>	<b>11.2</b>	▲ 0.3	▲ 0.4
<b>Total Mexican Exports</b>	<b>6.6</b>	<b>6.6</b>	<b>6.6</b>	<b>6.9</b>	<b>6.1</b>	<b>6.2</b>	▲ 0.1	▼ -0.4
<b>Implied Daily Storage Activity</b>	<b>11.6</b>	<b>12.2</b>	<b>12.0</b>	<b>8.2</b>	<b>0.4</b>	<b>3.5</b>	<b>3.1</b>	
<b>EIA Reported Daily Storage Activity</b>	<b>11.6</b>	<b>13.1</b>	<b>12.4</b>	<b>9.0</b>	<b>1.0</b>			
<b>Daily Model Error</b>	<b>0.0</b>	<b>-0.9</b>	<b>-0.5</b>	<b>-0.8</b>	<b>-0.6</b>			

### Monthly Balances

	2Yr Ago Nov-19	LY Nov-20	Jul-21	Aug-21	Sep-21	Oct-21	MTD Nov-21	MoM	vs. LY
<b>Lower 48 Dry Production</b>	<b>96.2</b>	<b>91.1</b>	<b>93.6</b>	<b>94.2</b>	<b>94.4</b>	<b>95.2</b>	<b>96.8</b>	▲ 1.6	▲ 5.7
<b>Canadian Imports</b>	<b>4.5</b>	<b>4.6</b>	<b>5.2</b>	<b>5.1</b>	<b>5.1</b>	<b>5.4</b>	<b>5.1</b>	▼ -0.3	▲ 0.5
L48 Power	27.5	25.7	39.4	40.1	33.1	30.3	28.2	▼ -2.1	▲ 2.5
L48 Residential & Commercial	32.8	24.4	8.1	7.8	7.7	12.9	26.0	▲ 13.1	▲ 1.7
L48 Industrial	24.9	22.4	21.2	21.9	22.1	21.7	23.7	▲ 2.0	▲ 1.3
L48 Lease and Plant Fuel	5.2	5.0	5.1	5.1	5.2	5.2	5.3	▲ 0.1	▲ 0.3
L48 Pipeline Distribution	3.0	2.7	2.5	2.6	2.2	2.3	2.9	▲ 0.6	▲ 0.2
<b>L48 Regional Gas Consumption</b>	<b>93.5</b>	<b>80.2</b>	<b>76.3</b>	<b>77.5</b>	<b>70.4</b>	<b>72.4</b>	<b>86.1</b>	▲ 13.7	▲ 6.0
<b>Net LNG Exports</b>	<b>7.2</b>	<b>10.1</b>	<b>10.8</b>	<b>10.5</b>	<b>10.3</b>	<b>10.6</b>	<b>11.0</b>	▲ 0.4	▲ 0.9
<b>Total Mexican Exports</b>	<b>5.2</b>	<b>6.1</b>	<b>7.1</b>	<b>6.9</b>	<b>6.7</b>	<b>6.6</b>	<b>6.0</b>	▼ -0.6	▼ 0.0
<b>Implied Daily Storage Activity</b>	<b>-5.1</b>	<b>-0.7</b>	<b>4.6</b>	<b>4.6</b>	<b>12.2</b>	<b>10.9</b>	<b>-1.3</b>		
<b>EIA Reported Daily Storage Activity</b>									
<b>Daily Model Error</b>									

Source: Bloomberg, analytix.ai

## Daily Average Generation Data

### Nuclear Generation Daily Average - GWh (NRC)

	9-Nov	10-Nov	11-Nov	12-Nov	13-Nov	14-Nov	15-Nov	DoD	vs. 7D
NRC Nuclear Daily Output	81.7	81.7	82.1	82.6	82.7	83.7	84.0	0.3	1.5
NRC Nuclear Max Capacity	104.9	104.9	104.9	104.9	104.9	104.9	104.9	0.0	0.0
NRC Nuclear Outage	23.2	23.1	22.7	22.2	22.1	21.2	20.9	-0.3	-1.5
NRC % Nuclear Cap Utilization	83.0	83.1	83.5	84.0	84.1	85.1	85.4	0.3	1.5

### Wind Generation Daily Average - MWh (EIA)

	9-Nov	10-Nov	11-Nov	12-Nov	13-Nov	14-Nov	15-Nov	DoD	vs. 7D
CALI Wind	2831	1703	603	484	342	272	1244	972	205
TEXAS Wind	10746	16930	6916	11152	12085	8889	10264	1375	-855
US Wind	38002	60852	55365	64722	50577	49269	43525	-5744	-9606

### Generation Daily Average - MWh (EIA)

	9-Nov	10-Nov	11-Nov	12-Nov	13-Nov	14-Nov	15-Nov	DoD	vs. 7D
US Wind	38002	60852	55365	64722	50577	49269	43525	-5744	-9606
US Solar	8695	9586	9798	10225	9885	10351	10356	5	599
US Petroleum	2878	2489	2042	1941	2754	2549	3233	683	791
US Other	7725	7815	7757	8013	7477	7581	7887	306	159
US Coal	84701	76438	73780	73139	78168	77987	84340	6352	6970
US Nuke	86125	86527	86829	86997	87358	87638	88332	693	1419
US Hydro	26753	26074	26602	24353	24796	24965	26944	1979	1354
<b>US Gas</b>	<b>150681</b>	<b>135098</b>	<b>143909</b>	<b>140713</b>	<b>138431</b>	<b>140797</b>	<b>162151</b>	<b>21355</b>	<b>20547</b>

See National Wind and Nuclear daily charts

Source: Bloomberg, analytix.ai

## Storage Week Average Generation Data

### Nuclear Generation Weekly Average - GWh (NRC)

	8-Oct	15-Oct	22-Oct	29-Oct	5-Nov	12-Nov	WoW	WoW Bcf/d Impact
NRC Nuclear Daily Output	82.1	76.5	73.6	71.6	72.2	79.8	7.6	-1.4
NRC Nuclear Max Capacity	104.9	104.9	104.9	104.9	104.9	104.9	0.0	
NRC Nuclear Outage	22.7	28.3	31.2	33.3	32.7	25.1	-7.6	
NRC % Nuclear Cap Utilization	0.1	0.1	0.1	0.1	0.1	0.1	0.0	

### Wind Generation Weekly Average - MWh (EIA)

	8-Oct	15-Oct	22-Oct	29-Oct	5-Nov	12-Nov	WoW	WoW Bcf/d Impact
CALI Wind	1099	2400	1270	2314	1669	1805	136	0.0
TEXAS Wind	4890	15396	10729	15462	8472	12032	3560	-0.6
US Wind	20468	49918	43721	49870	32116	50996	18880	-3.4
					-17754.6			
					-36%			

### Generation Weekly Average - MWh (EIA)

	8-Oct	15-Oct	22-Oct	29-Oct	5-Nov	12-Nov	WoW	WoW Bcf/d Impact
US Wind	20468	49918	43721	49870	32116	50996	18880	<b>-3.4</b>
US Solar	11294	10530	12209	10138	9979	9817	-161	<b>0.0</b>
US Petroleum	3901	3224	3092	2815	3517	2532	-985	<b>0.2</b>
US Other	10973	12221	12109	10196	9288	8142	-1146	0.2
US Coal	100713	89841	74017	73355	77392	77955	563	-0.1
US Nuke	83696	77046	73748	73713	75510	84337	8827	<b>-1.6</b>
US Hydro	24553	24699	23105	23540	25530	25347	-183	0.0
<b>US Gas</b>	<b>176848</b>	<b>162707</b>	<b>150057</b>	<b>152802</b>	<b>159071</b>	<b>144802</b>	<b>-14269</b>	2.6

See National Wind and Nuclear daily charts

Source: Bloomberg, analytix.ai

## Monthly Average Generation Data

### Nuclear Generation Monthly Average - GWh (NRC)

	2Yr Ago	LY	MTD						
	Same 30 days	Same 30 days	Aug-21	Sep-21	Oct-21	Nov-21	Last 30 days	MoM (MTD vs LY)	Last 30 days YoY
	NRC Nuclear Daily Output	81.1	77.3	91.5	87.2	75.5	79.5	76.1	4.0
NRC Nuclear Max Capacity	104.9	104.9	104.9	104.9	104.9	104.9	104.9	0.0	0.0
NRC Nuclear Outage	23.8	27.6	13.4	17.7	29.4	25.4	28.8	-4.0	1.2
NRC % Nuclear Cap Utilization	82.5	78.6	93.0	88.7	76.8	80.8	77.4	4.1	-1.2

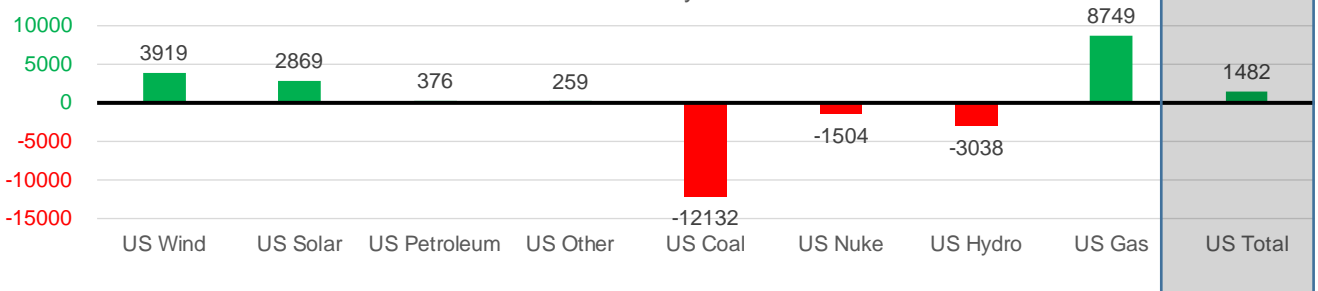
### Wind Generation Monthly Average - MWh (EIA)

	2Yr Ago	LY	MTD						
	Same 30 days	Same 30 days	Aug-21	Sep-21	Oct-21	Nov-21	Last 30 days	MoM (MTD vs LY)	Last 30 days YoY
	CALI Wind	647	1225	2442	2020	1765	1411	1562	-354
TEXAS Wind	8843	9751	9901	9400	11565	10192	11543	-1373	1792
US Wind	34334	41729	35830	40223	40991	44355	45648	3364	3919

### Generation Monthly Average - MWh (EIA)

	2Yr Ago	LY	MTD						
	Same 30 days	Same 30 days	Aug-21	Sep-21	Oct-21	Nov-21	Last 30 days	MoM (MTD vs LY)	Last 30 days YoY
	US Wind	34334	41729	35830	40223	40991	44355	45648	▲ 1292.9
US Solar	6274	7340	13787	13382	11044	9819	10209	▲ 390.4	▲ 2869
US Petroleum	3162	2572	4484	2452	3238	2949	2948	▼ 0	▲ 376
US Other	8224	8986	9928	9008	11099	8422	9245	▲ 824	▲ 259
US Coal	98252	89090	137655	110037	82735	80614	76958	▼ -3655	▼ -12132
US Nuke	87868	80895	94062	90146	76700	83862	79391	▼ -4471	▼ -1504
US Hydro	25992	28068	28533	25665	23895	25978	25030	▼ -948	▼ -3038
<b>US Gas</b>	<b>151428</b>	<b>143850</b>	<b>173538</b>	<b>173538</b>	<b>158237</b>	<b>154416</b>	<b>152600</b>	▼ -6568	▲ 8749
<b>US Total</b>	<b>415903</b>	<b>402844</b>	<b>534937</b>	<b>464626</b>	<b>410686</b>	<b>411025</b>	<b>404327</b>	▼ -14429	▲ 1482

Last 30 days YoY



See National Wind and Nuclear daily charts

Source: Bloomberg, analytix.ai

## Regional S/D Models Storage Projection

Week Ending 12-Nov

	Daily Raw Storage	Daily Adjustment Factor	Daily Average Storage Activity (Adjusted) *	Weekly Adjusted Storage Activity
L48	3.2	0.9	4.1	29
East	0.0	0.4	0.3	2
Midwest	0.3	1.4	1.6	11
Mountain	3.3	-3.3	0.0	0
South Central	-1.0	2.5	1.6	11
Pacific	0.6	-0.1	0.5	4

\*Adjustment Factor is calculated based on historical regional deltas

U.S. underground natural gas storage facilities by type (July 2015)

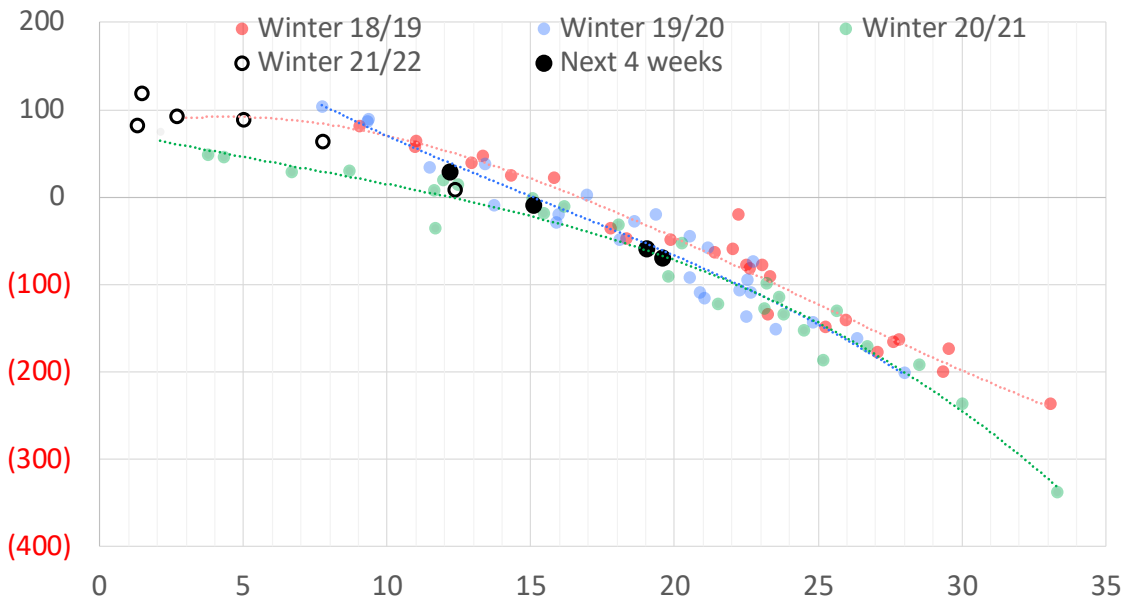


## Weather Model Storage Projection

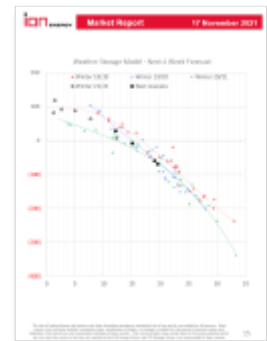
Next report  
and beyond

Week Ending	GWDDs	Week Storage Projection
12-Nov	12.2	29
19-Nov	15	-8
26-Nov	19	-60
03-Dec	20	-69

Weather Storage Model - Next 4 Week Forecast

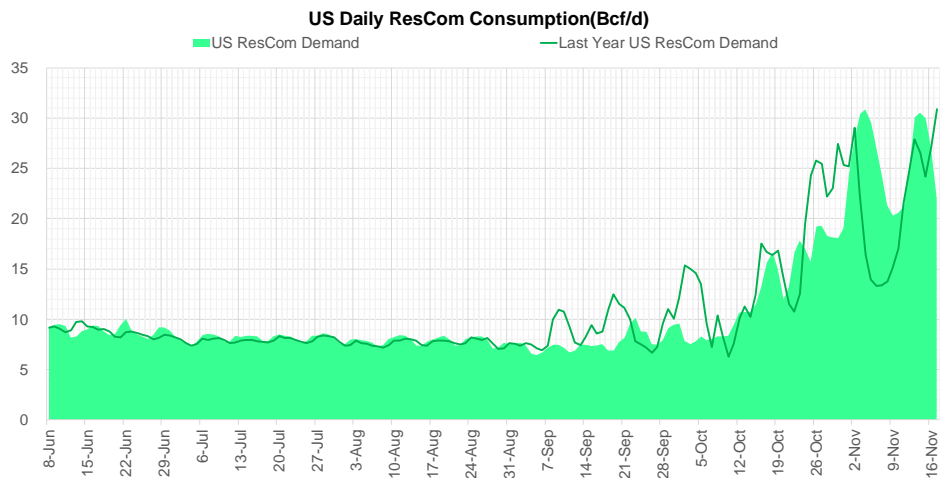
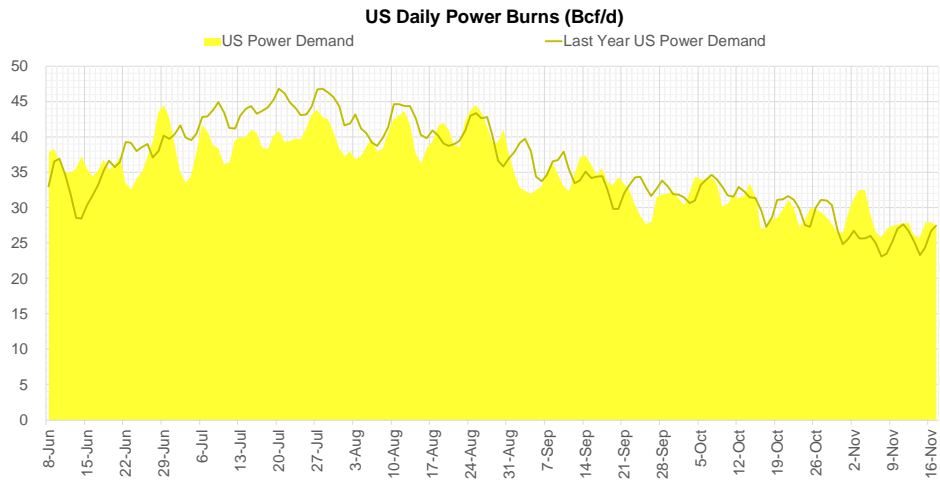
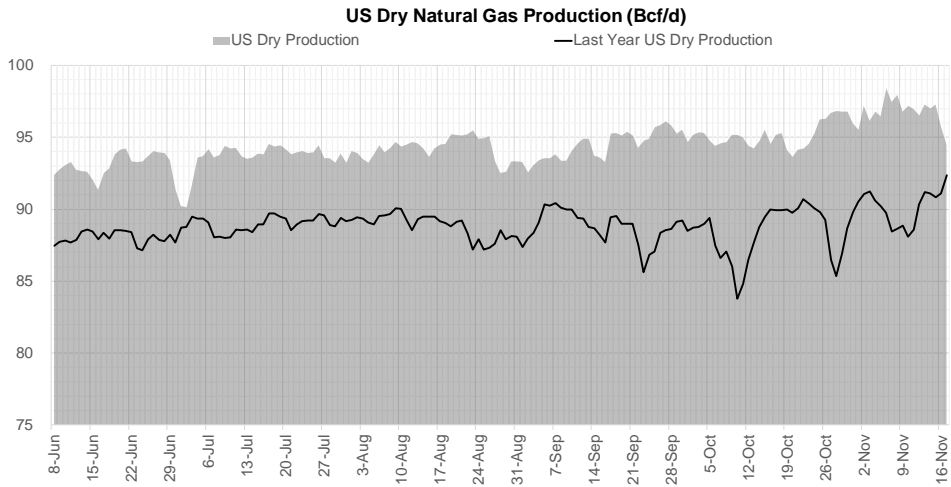


Go to larger image





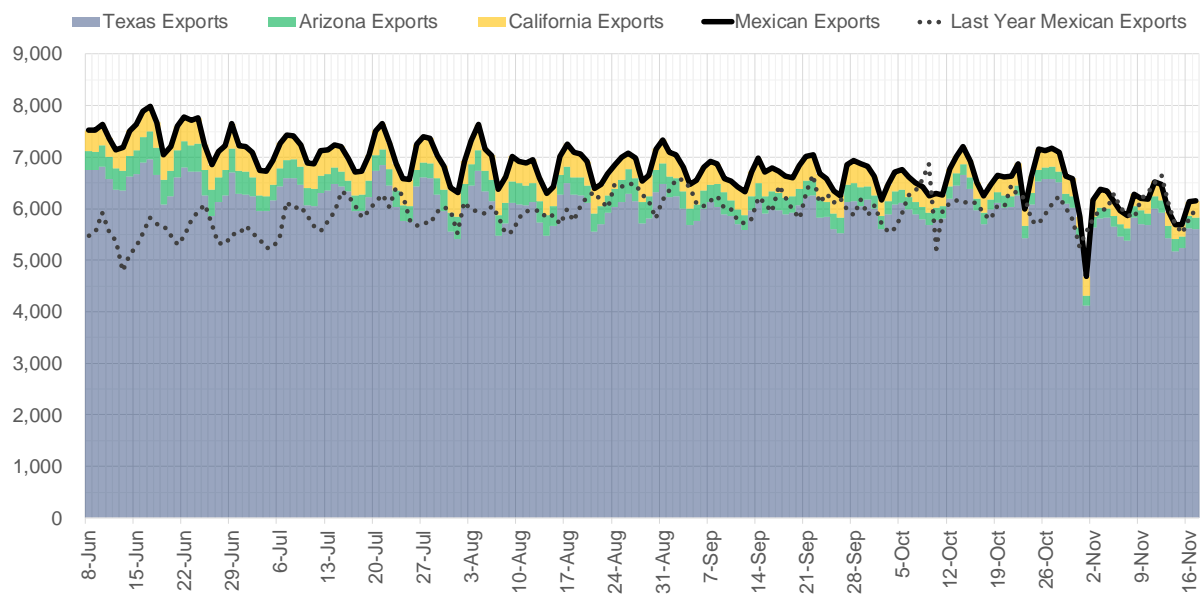
## Supply – Demand Trends



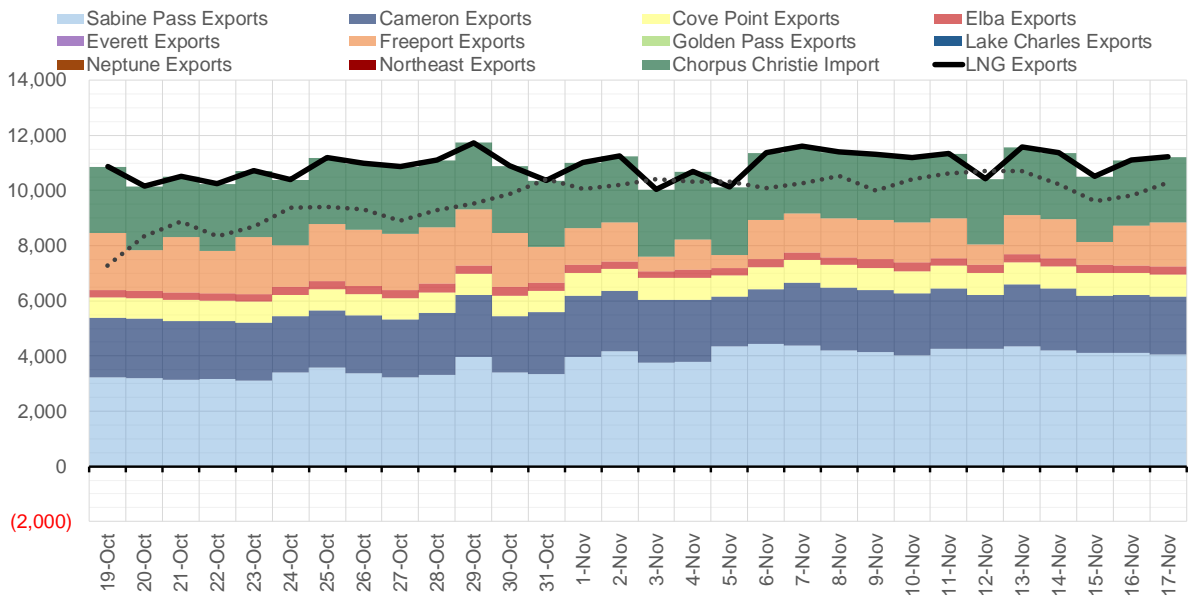
Source: Bloomberg

The risk of trading futures and options and other derivatives involves a substantial risk of loss and is not suitable for all persons. Each person must consider whether a particular trade, combination of trades, or strategy is suitable for that person's financial means and objectives. Past results are not necessarily indicative of future results. This communication may contain links to third party websites which are not under the control of and are not maintained by ION Energy Group, and ION Energy Group is not responsible for their content.

### Mexican Exports (MMcf/d)



### Net LNG Exports - Last 30 days (MMcf/d)



Source: Bloomberg

The risk of trading futures and options and other derivatives involves a substantial risk of loss and is not suitable for all persons. Each person must consider whether a particular trade, combination of trades, or strategy is suitable for that person's financial means and objectives. Past results are not necessarily indicative of future results. This communication may contain links to third party websites which are not under the control of and are not maintained by ION Energy Group, and ION Energy Group is not responsible for their content.

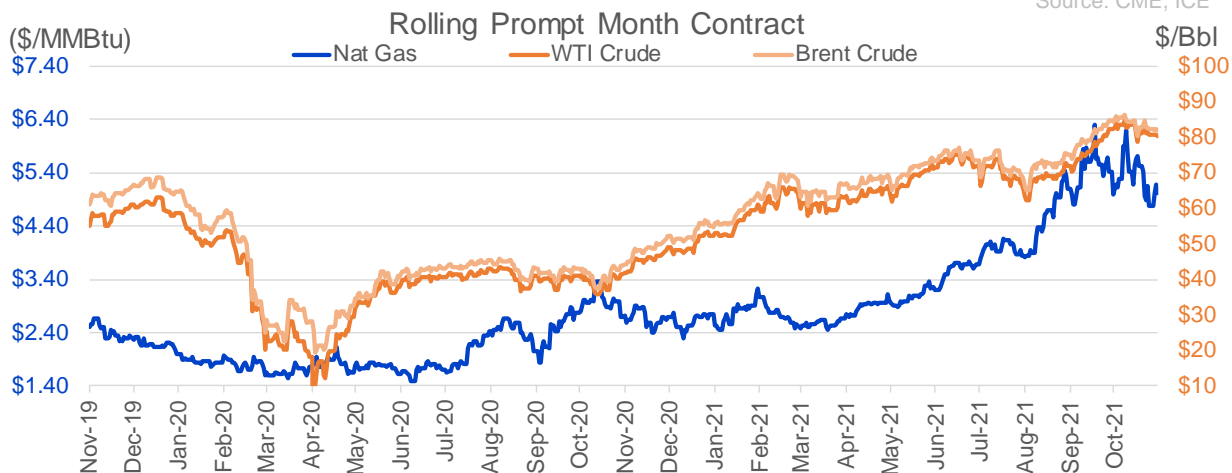
## Nat Gas Options Volume and Open Interest CME, ICE and Nasdaq Combined

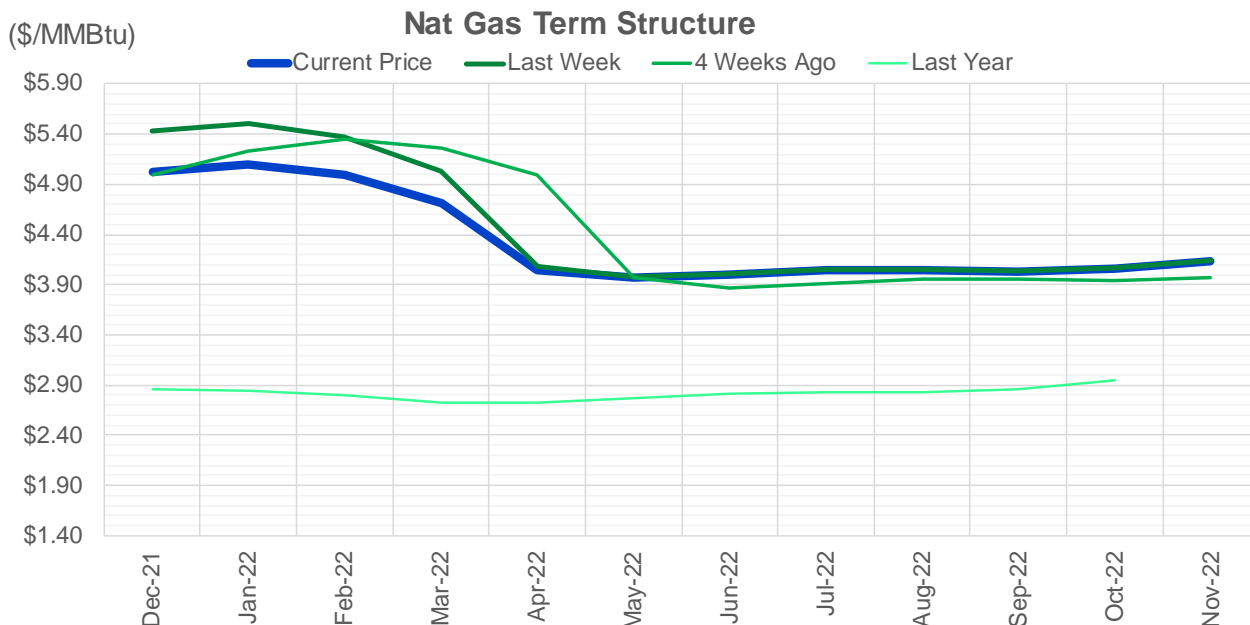
CONTRACT MONTH	CONTRACT YEAR	PUT/CALL	STRIKE	CUMULATIVE VOL	CONTRACT MONTH	CONTRACT YEAR	PUT/CALL	STRIKE	CUMULATIVE OI
12	2021	C	6.00	8701	12	2021	P	2.75	54612
12	2021	C	6.50	3803	12	2021	P	4.00	44891
12	2021	C	5.50	3585	12	2021	P	3.00	40234
12	2021	P	4.00	2814	12	2021	P	2.50	39420
5	2022	C	5.50	2450	3	2022	C	10.00	34568
12	2021	C	7.00	2409	12	2021	P	3.50	33470
3	2022	P	3.50	2402	12	2021	C	6.00	27439
12	2021	P	5.00	2188	12	2021	P	4.25	25603
12	2021	P	4.20	2030	12	2021	P	5.00	25310
1	2022	C	9.00	1921	3	2022	C	8.00	25213
12	2021	P	4.75	1573	1	2022	C	6.00	23449
12	2021	P	4.50	1489	1	2022	P	2.75	23229
4	2022	C	5.50	1450	12	2021	C	7.00	22809
3	2022	P	3.00	1429	3	2022	C	5.00	22573
3	2022	C	6.00	1411	12	2021	C	4.00	22526
12	2021	C	5.75	1369	1	2022	P	3.00	22428
2	2022	P	3.50	1309	3	2022	P	3.00	20949
12	2021	C	7.50	1290	12	2021	C	8.00	20687
1	2022	C	8.00	1191	4	2022	C	3.00	19710
12	2021	C	5.90	1063	3	2022	P	2.50	18833
12	2021	C	5.80	1032	3	2022	P	3.50	18450
4	2022	C	8.00	910	1	2022	C	5.00	18413
1	2022	C	6.00	904	1	2022	C	7.00	17920
1	2022	C	7.00	904	12	2021	P	4.50	17715
1	2022	C	10.00	872	1	2022	P	3.50	17699
12	2021	C	8.00	869	2	2022	C	5.00	17691
12	2021	P	5.10	704	3	2022	P	4.00	17457
1	2023	C	4.50	700	1	2022	P	4.00	17343
1	2023	C	5.00	700	12	2021	P	2.00	16834
12	2021	C	6.25	643	3	2022	C	6.00	16528
2	2022	C	15.00	609	12	2022	C	5.00	16097
5	2022	P	3.00	600	12	2021	C	5.00	16059
5	2022	P	3.50	600	4	2022	C	5.00	15548
9	2022	C	5.70	600	3	2022	C	4.00	15506
9	2022	P	3.40	600	12	2021	C	6.50	15311
10	2022	C	5.70	600	4	2022	P	2.50	15264
10	2022	P	3.40	600	2	2022	P	3.50	15121
4	2024	P	2.75	600	12	2021	C	5.50	14916
5	2024	P	2.75	600	1	2022	C	4.00	14369
6	2024	P	2.75	600	1	2022	C	8.00	13951
7	2024	P	2.75	600	2	2022	C	6.00	13879
8	2024	P	2.75	600	3	2022	C	7.00	13838
9	2024	P	2.75	600	3	2022	P	5.00	13798
10	2024	P	2.75	600	5	2022	C	3.00	13733
12	2021	P	4.90	578	12	2021	C	15.00	13491
12	2021	P	5.20	573	6	2022	C	3.00	13438
3	2022	P	4.00	554	3	2022	C	9.00	13281
2	2022	C	8.00	542	12	2022	C	4.50	13267
1	2022	C	5.50	534	12	2022	C	5.25	13263
					7	2022	C	3	13230

Source: CME, ICE

## Nat Gas Futures Open Interest CME, and ICE Combined

CME Henry Hub Futures (10,000 MMBtu)				ICE Henry Hub Futures Contract Equivalent (10,000 MM			
	Current	Prior	Daily Change		Current	Prior	Daily Change
DEC 21	72857	82297	-9440	DEC 21	92613	92650	-37
JAN 22	255825	251910	3915	JAN 22	87695	87403	292
FEB 22	78771	79170	-399	FEB 22	70293	70270	24
MAR 22	157780	156086	1694	MAR 22	80074	80023	51
APR 22	117273	116210	1063	APR 22	76979	77579	-600
MAY 22	139880	138321	1559	MAY 22	72393	72531	-138
JUN 22	44184	44076	108	JUN 22	54768	54743	25
JUL 22	43131	43296	-165	JUL 22	56834	57320	-486
AUG 22	31738	31509	229	AUG 22	55015	55242	-227
SEP 22	37113	36976	137	SEP 22	56090	56303	-214
OCT 22	87638	87234	404	OCT 22	62184	62371	-187
NOV 22	35586	35439	147	NOV 22	47820	47803	17
DEC 22	27379	27491	-112	DEC 22	50603	50694	-91
JAN 23	31865	32335	-470	JAN 23	40263	40256	7
FEB 23	11141	11229	-88	FEB 23	33430	33442	-12
MAR 23	23868	23796	72	MAR 23	37034	36993	42
APR 23	16572	16088	484	APR 23	37832	37845	-13
MAY 23	10033	10021	12	MAY 23	35443	35229	215
JUN 23	9172	9414	-242	JUN 23	31695	31440	255
JUL 23	6237	6037	200	JUL 23	31558	31319	239
AUG 23	4527	4453	74	AUG 23	32627	32387	239
SEP 23	6165	5792	373	SEP 23	30745	30513	232
OCT 23	10814	10860	-46	OCT 23	34484	34260	224
NOV 23	5135	4993	142	NOV 23	33991	33980	12
DEC 23	8219	8078	141	DEC 23	31507	31494	12
JAN 24	4843	4836	7	JAN 24	19555	19597	-42
FEB 24	1451	1443	8	FEB 24	15043	15039	4
MAR 24	8631	8626	5	MAR 24	19924	19792	132
APR 24	5367	5362	5	APR 24	14306	14283	24
MAY 24	1982	1982	0	MAY 24	14844	14843	1





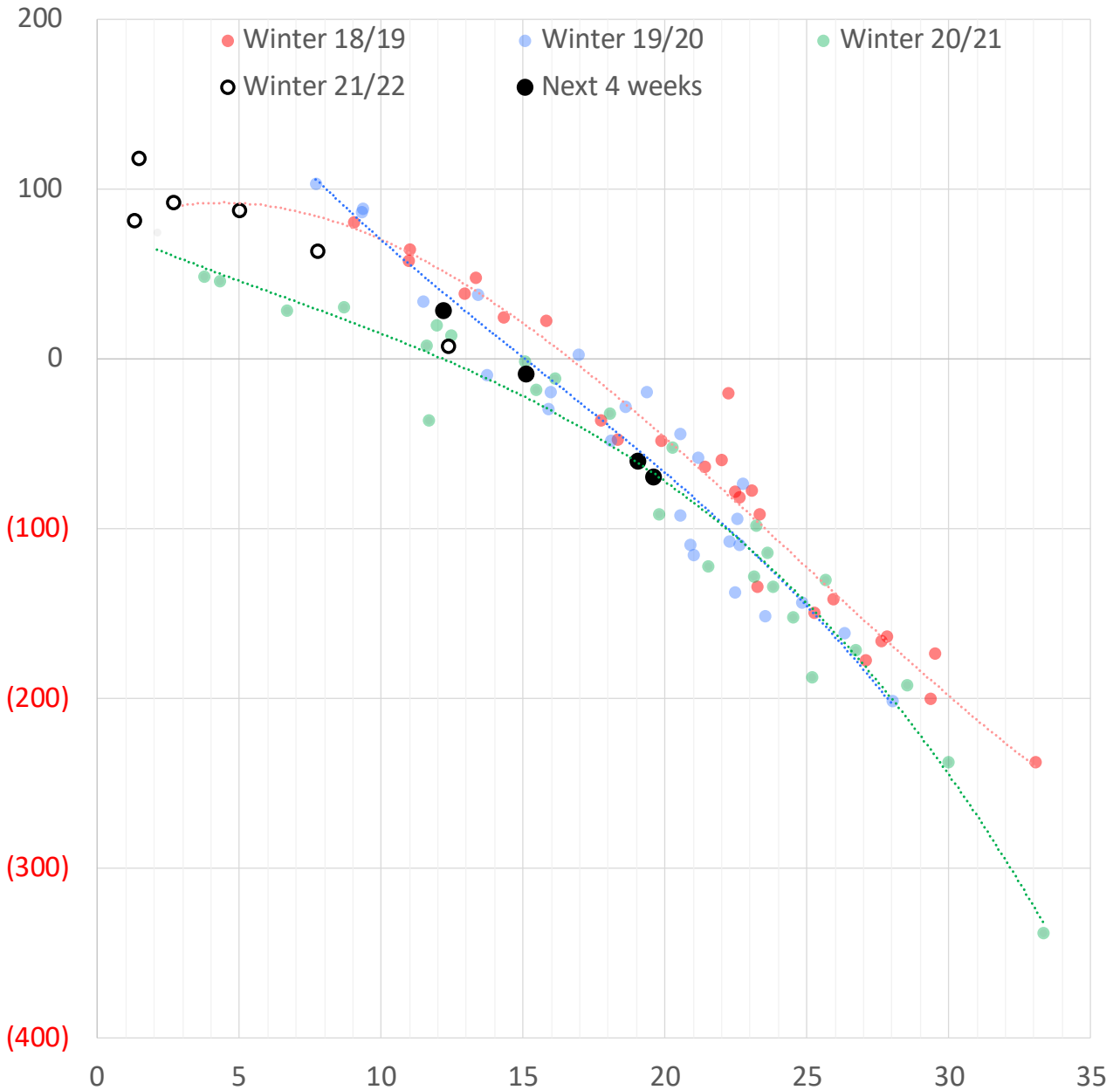
	Dec-21	Jan-22	Feb-22	Mar-22	Apr-22	May-22	Jun-22	Jul-22	Aug-22	Sep-22	Oct-22	Nov-22
<b>Current Price</b>	<b>\$5.017</b>	<b>\$5.104</b>	<b>\$4.991</b>	<b>\$4.718</b>	<b>\$4.045</b>	<b>\$3.973</b>	<b>\$4.004</b>	<b>\$4.048</b>	<b>\$4.051</b>	<b>\$4.028</b>	<b>\$4.054</b>	<b>\$4.131</b>
Last Week	\$5.427	\$5.505	\$5.367	\$5.029	\$4.081	\$3.983	\$4.010	\$4.050	\$4.055	\$4.034	\$4.061	\$4.135
vs. Last Week	-\$0.410	-\$0.401	-\$0.376	-\$0.311	-\$0.036	-\$0.010	-\$0.006	-\$0.002	-\$0.004	-\$0.006	-\$0.007	-\$0.004
4 Weeks Ago	\$4.989	\$5.236	\$5.346	\$5.261	\$5.000	\$3.965	\$3.871	\$3.910	\$3.954	\$3.957	\$3.939	\$3.971
vs. 4 Weeks Ago	\$0.028	-\$0.132	-\$0.355	-\$0.543	-\$0.955	\$0.008	\$0.133	\$0.138	\$0.097	\$0.071	\$0.115	\$0.160
Last Year	\$2.697	\$2.864	\$2.847	\$2.795	\$2.726	\$2.728	\$2.768	\$2.818	\$2.834	\$2.824	\$2.860	\$2.946
vs. Last Year	\$2.320	\$2.240	\$2.144	\$1.923	\$1.319	\$1.245	\$1.236	\$1.230	\$1.217	\$1.204	\$1.194	\$1.185

	Units	Cash Settled	Prompt Settle	Cash to Prompt
AGT Citygate	\$/MMBtu	4.91	12.56	7.65
TETCO M3	\$/MMBtu	4.69	6.40	1.71
FGT Zone 3	\$/MMBtu	4.65	5.10	0.45
Zone 6 NY	\$/MMBtu	4.65	6.57	1.93
Chicago Citygate	\$/MMBtu	4.94	5.29	0.35
Michcon	\$/MMBtu	4.96	4.73	-0.23
Columbia TCO Pool	\$/MMBtu	4.62	4.46	-0.16
Ventura	\$/MMBtu	4.91	5.69	0.78
Rockies/Opal	\$/MMBtu	5.02	5.04	0.03
El Paso Permian Basin	\$/MMBtu	4.75	5.06	0.31
Socal Citygate	\$/MMBtu	6.30	6.38	0.08
Malin	\$/MMBtu	5.90	5.65	-0.25
Houston Ship Channel	\$/MMBtu	4.53	5.15	0.62
Henry Hub Cash	\$/MMBtu	5.05	4.86	-0.19
AECO Cash	C\$/GJ	4.25	3.96	-0.29
Station2 Cash	C\$/GJ	3.37	6.01	2.64
Dawn Cash	C\$/GJ	5.07	4.91	-0.16

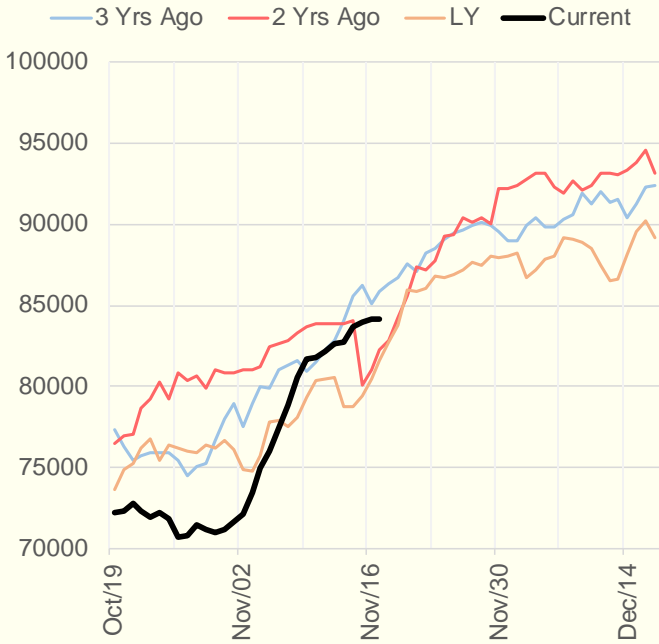
Source: CME, Bloomberg

	Units	Current Price	vs. Last Week	vs. 4 Weeks Ago	vs. Last Year
NatGas Jul21/Oct21	\$/MMBtu	2.224	▲ 0.000	▲ 0.000	▲ 2.180
NatGas Oct21/Nov21	\$/MMBtu	0.361	▲ 0.000	▲ 1.114	▲ 0.277
NatGas Oct21/Jan22	\$/MMBtu	-0.571	▲ 0.200	▼ -0.195	▼ -0.895
NatGas Apr22/Oct22	\$/MMBtu	-0.003	▼ -0.015	▲ 0.002	▼ -0.058
WTI Crude	\$/Bbl	80.76	▼ -3.390	▼ -2.200	▲ 39.330
Brent Crude	\$/Bbl	82.43	▼ -2.350	▼ -2.650	▲ 38.680
Fuel Oil, NY Harbour 1%	\$/Bbl	97.18	▲ 0.000	▲ 0.000	▲ 0.000
Heating Oil	cents/Gallon	243.09	▼ -7.720	▼ -12.980	▲ 119.180
Propane, Mt. Bel	cents/Gallon	1.30	▼ -0.119	▼ -0.177	▲ 0.750
Ethane, Mt. Bel	cents/Gallon	0.41	▼ -0.001	▼ -0.019	▲ 0.193
Coal, PRB	\$/MTon	12.30	▲ 0.000	▲ 0.000	▲ 0.000
Coal, PRB	\$/MMBtu	0.70			
Coal, ILB	\$/MTon	31.05	▲ 0.000	▲ 0.000	▲ 0.000
Coal, ILB	\$/MMBtu	1.32			

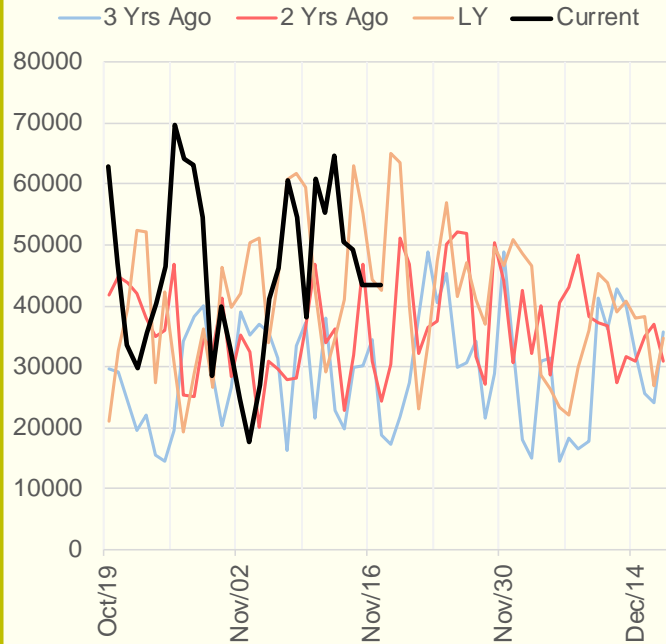
## Weather Storage Model - Next 4 Week Forecast



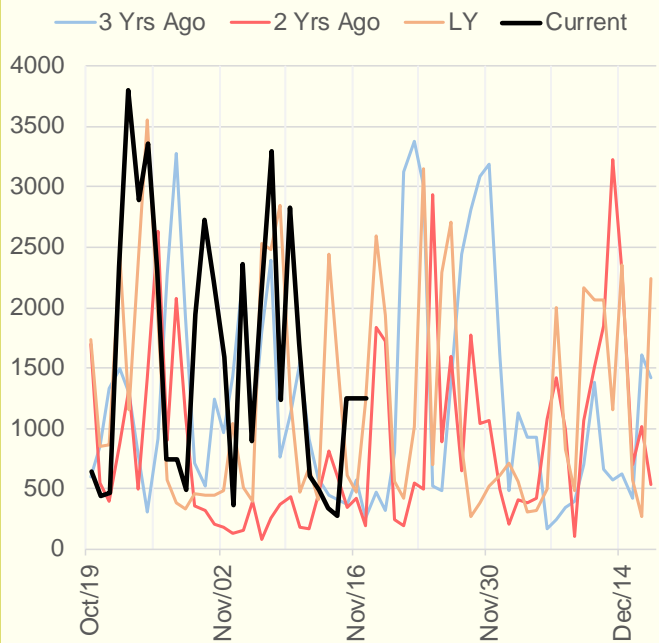
### NRC Nuclear Daily Output



### US Wind



### CALI Wind



### TEXAS Wind

