

# CFTC COMMITMENT OF TRADERS REPORT

As of 11/16/2021

## TRADITIONAL FUNDS net position changes

Wed to Tue, in 000 contracts

	Corn	Bean	Meal	Oil	Chi. Wheat	KC Wheat	Min Wheat
Futures Only	23.9	19.3	28.4	(0.1)	17.6	1.2	(1.5)
Futures & Options Combined	21.9	16.8	30.6	(2.7)	13.3	1.4	(1.3)

## TRADITIONAL COMMERCIAL net position changes

	Corn	Bean	Meal	Oil	Chi. Wheat	KC Wheat	Min Wheat
Futures Only	(19.8)	(14.0)	(29.2)	(2.8)	(14.6)	(4.2)	1.2
Futures & Options Combined	(21.6)	(12.3)	(31.8)	(0.3)	(10.3)	(4.1)	1.0

## MANAGED MONEY net position changes

	Corn	Bean	Meal	Oil	Chi. Wheat	KC Wheat	Min Wheat
Futures Only	23.6	20.3	28.5	3.4	14.5	3.4	(1.5)
Futures & Options Combined	21.5	17.4	28.2	3.6	11.9	3.2	(1.5)

## SWAP DEALERS net position changes

	Corn	Bean	Meal	Oil	Chi. Wheat	KC Wheat	Min Wheat
Futures Only	(1.3)	(1.0)	(1.3)	(1.0)	(1.7)	(3.0)	(0.0)
Futures & Options Combined	(2.2)	(3.3)	(1.8)	(1.0)	4.4	(2.6)	(0.0)

## PRODUCERS/END USERS net position changes

	Corn	Bean	Meal	Oil	Chi. Wheat	KC Wheat	Min Wheat
Futures Only	(18.5)	(13.0)	(27.9)	(1.8)	(12.9)	(1.1)	1.2
Futures & Options Combined	(19.5)	(9.0)	(30.0)	0.7	(14.7)	(1.5)	1.0

## INDEX net position changes

	Corn	Bean	Meal	Oil	Chi. Wheat	KC Wheat	Min Wheat
Futures & Options Combined	3.9	2.0	3.9	1.4	7.0	(0.5)	NA

## SUPPLEMENTAL NON-COMMERCIAL net position changes

	Corn	Bean	Meal	Oil	Chi. Wheat	KC Wheat	Min Wheat
Futures & Options Combined	18.3	12.7	26.5	(3.8)	10.6	2.2	NA

## OPEN INTEREST net position changes

Wed to Tue, in 000 contracts

	Corn	Bean	Meal	Oil	Chi. Wheat	KC Wheat	Min Wheat
Futures Only	58.2	18.7	8.2	5.6	22.3	3.6	(1.6)
Futures & Options Combined	73.4	19.6	20.7	11.0	41.8	8.6	(2.3)

Source: CFTC and FI

Wed to Tue, in 000 contracts

11/21/2021

**COMMITMENT OF TRADERS  
FUTURES ONLY NET POSITIONS  
AS OF 11/16/2021  
(IN THOUSAND CONTRACTS)**

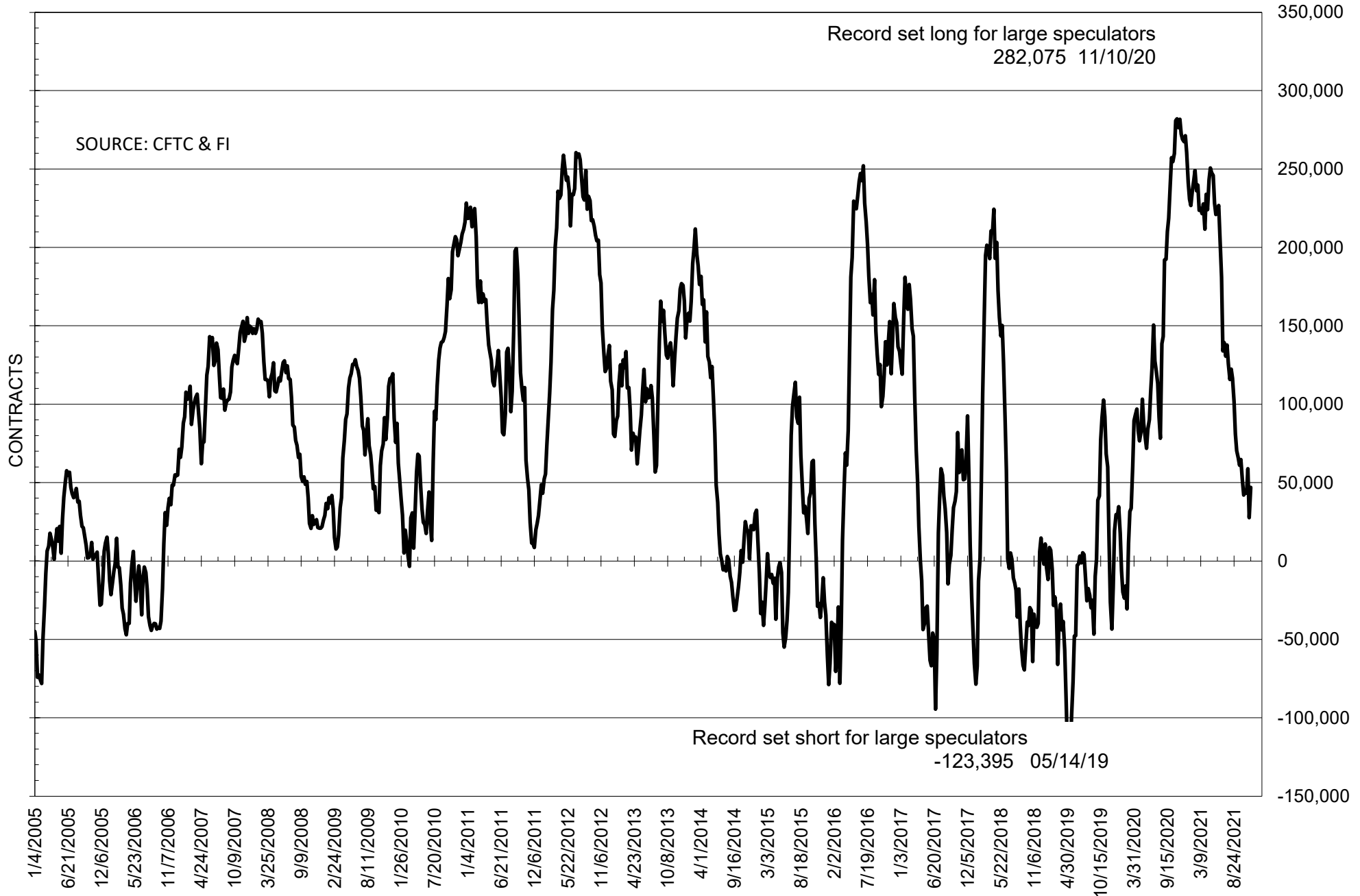
	COMMERCIAL				(FUND) NON COMMERCIAL				(SPEC) NON-REPORTABLE			
	16-Nov	9-Nov	2-Nov	26-Oct	16-Nov	9-Nov	2-Nov	26-Oct	16-Nov	9-Nov	2-Nov	26-Oct
	<b>WHEAT</b>											
Chicago	-28.0	-13.4	-11.1	8.8	36.8	19.2	17.9	0.8	-8.8	-5.8	-6.8	-9.5
Kansas City	-54.4	-50.2	-52.0	-47.9	50.5	49.3	51.3	46.6	3.9	0.9	0.7	1.3
Minneapolis	-33.1	-34.2	-34.8	-34.2	26.4	27.9	29.5	28.1	6.7	6.3	5.4	6.1
All Wheat	-115.4	-97.8	-98.0	-73.3	113.7	96.4	98.7	75.4	1.8	1.4	-0.7	-2.1
<b>CORN</b>	-340.7	-320.9	-320.4	-252.1	399.2	375.3	383.1	307.8	-58.5	-54.4	-62.7	-55.8
OATS	-0.7	-0.7	-0.9	-0.8	0.7	0.6	0.6	0.6	0.0	0.1	0.3	0.2
<b>SOYBEANS</b>	-4.9	9.1	-19.9	-10.2	46.9	27.6	58.8	43.2	-42.0	-36.7	-38.9	-33.1
SOY OIL	-87.2	-84.3	-103.6	-101.8	78.6	78.7	91.1	90.7	8.6	5.6	12.5	11.1
SOY MEAL	-99.9	-70.6	-55.1	-48.5	74.0	45.6	30.8	23.4	25.9	25.0	24.3	25.1

Oats positions thin to be reported

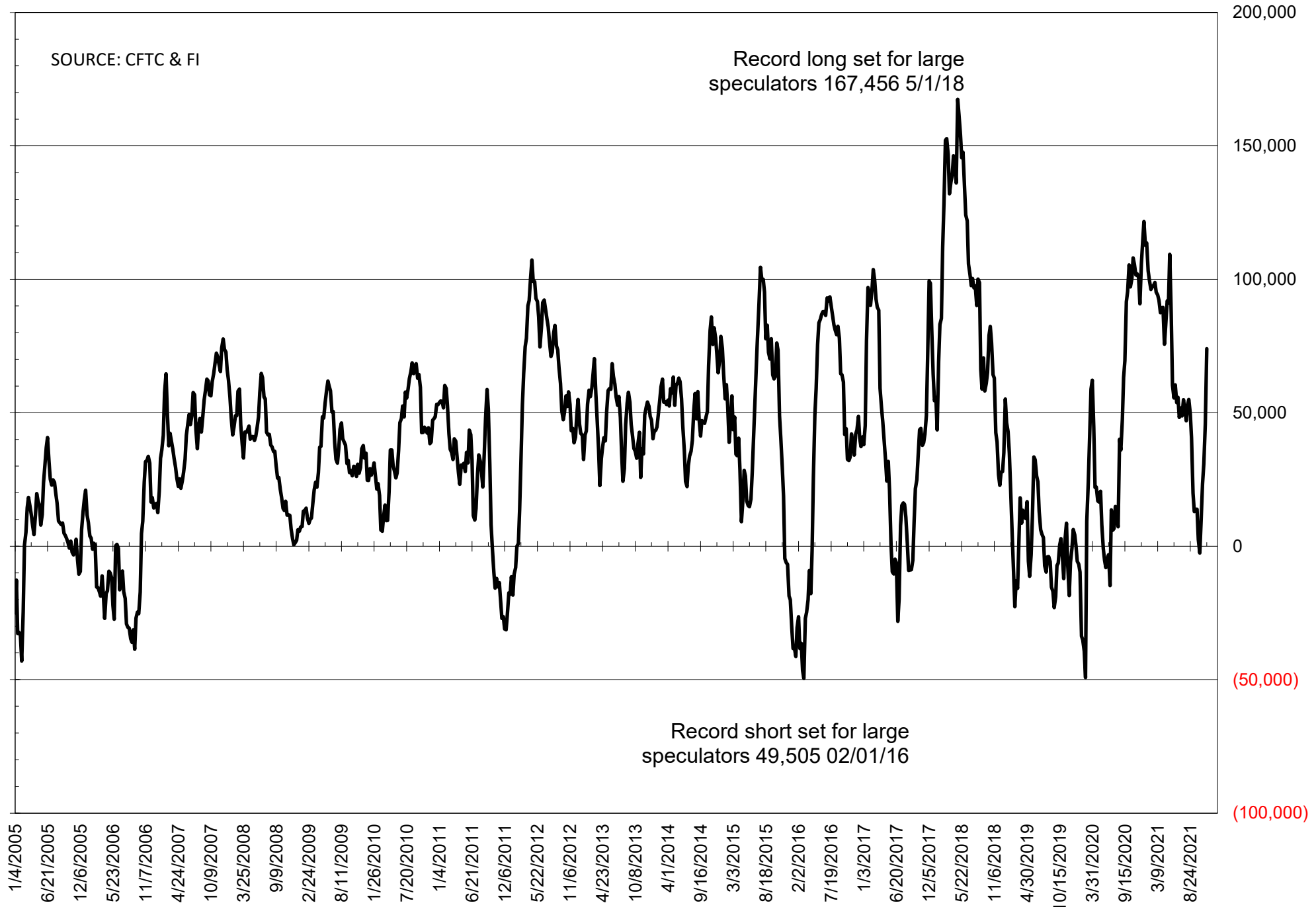
	TOTAL OPEN INTEREST				NEARBY FUTURES PRICE					16-Nov-21 LAST REPORTED % HELD BY TRADERS			
	16-Nov	9-Nov	2-Nov	26-Oct	Z/F Latest	Z/F 16-Nov	Z/F 9-Nov	Z/F 2-Nov	X/Z 26-Oct	LARGE FUND		SMALL	
										LONG	SHORT	LONG	SHORT
<b>WHEAT</b>													
Chicago	427786	405438	409137	405625	823.00	810.25	778.50	791.50	752.25	0%	22%	0%	10%
Kansas City	237136	233489	235472	236941	834.75	820.75	793.50	798.25	777.25	0%	17%	0%	9%
Minneapolis	75836	77422	76945	75079	1009.25	1015.00	1023.75	1075.50	1021.25	0%	3%	0%	14%
<b>CORN</b>	1598926	1540731	1506602	1438930	570.75	571.00	554.75	573.00	543.50	0%	7%	0%	12%
OATS	5612	5549	5301	5410	764.50	730.50	716.25	760.25	706.50	0%	3%	0%	49%
<b>SOYBEANS</b>	662972	644317	620172	658960	1263.25	1251.25	1212.00	1256.25	1238.00	20%	13%	7%	13%
SOY OIL	429487	423882	426455	418373	58.16	59.17	58.47	61.99	62.31	0%	9%	0%	5%
SOY MEAL	459356	451149	447015	441233	371.80	367.50	342.50	337.20	326.90	0%	7%	0%	6%

SOURCE: CFTC & FI

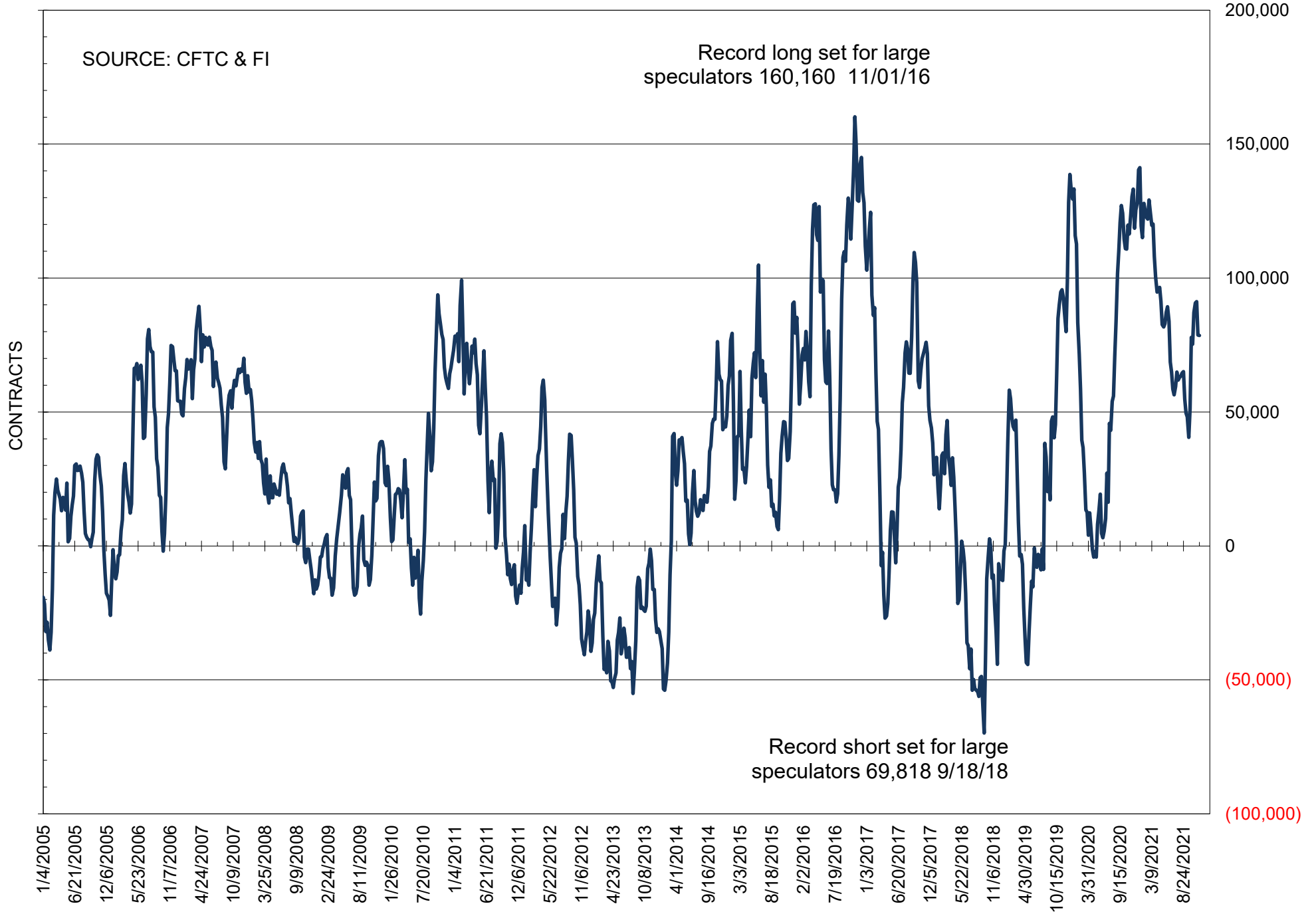
# NET POSITION OF FUTURES ONLY LARGE SPECS IN SOYBEANS



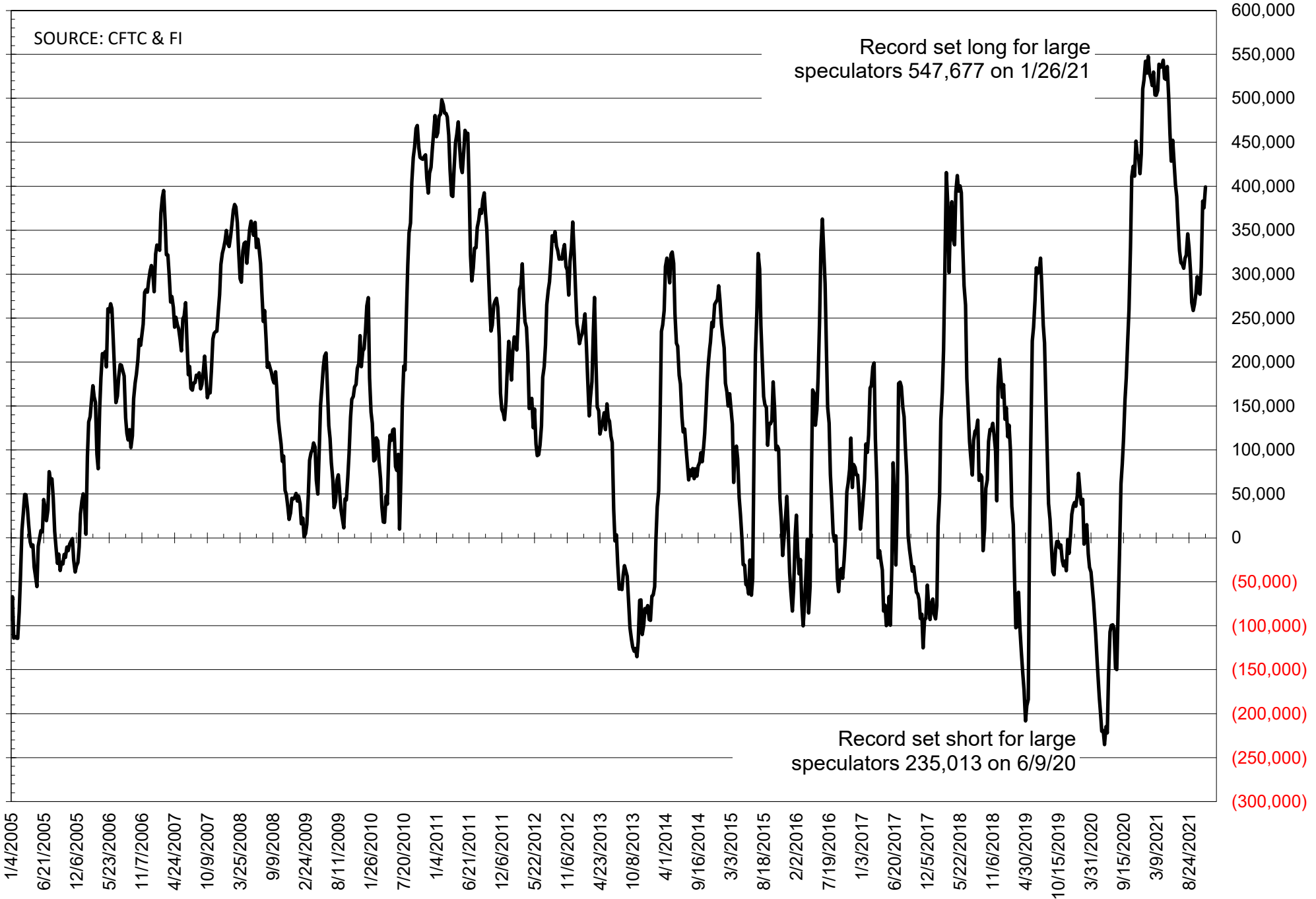
# NET POSITION OF FUTURES ONLY LARGE SPECS IN SOYMEAL



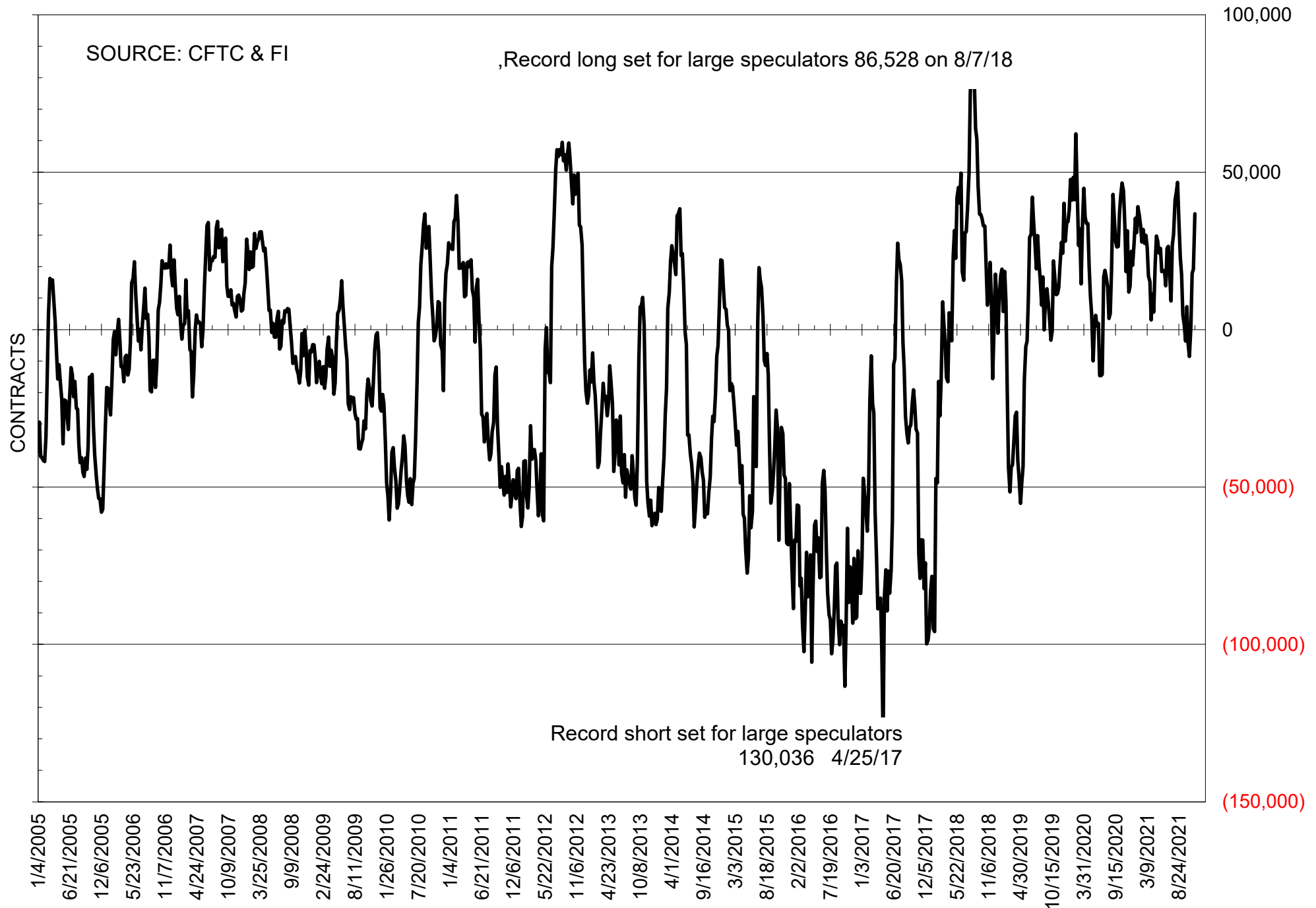
# NET POSITION OF FUTURES ONLY LARGE SPECS IN SOYOIL



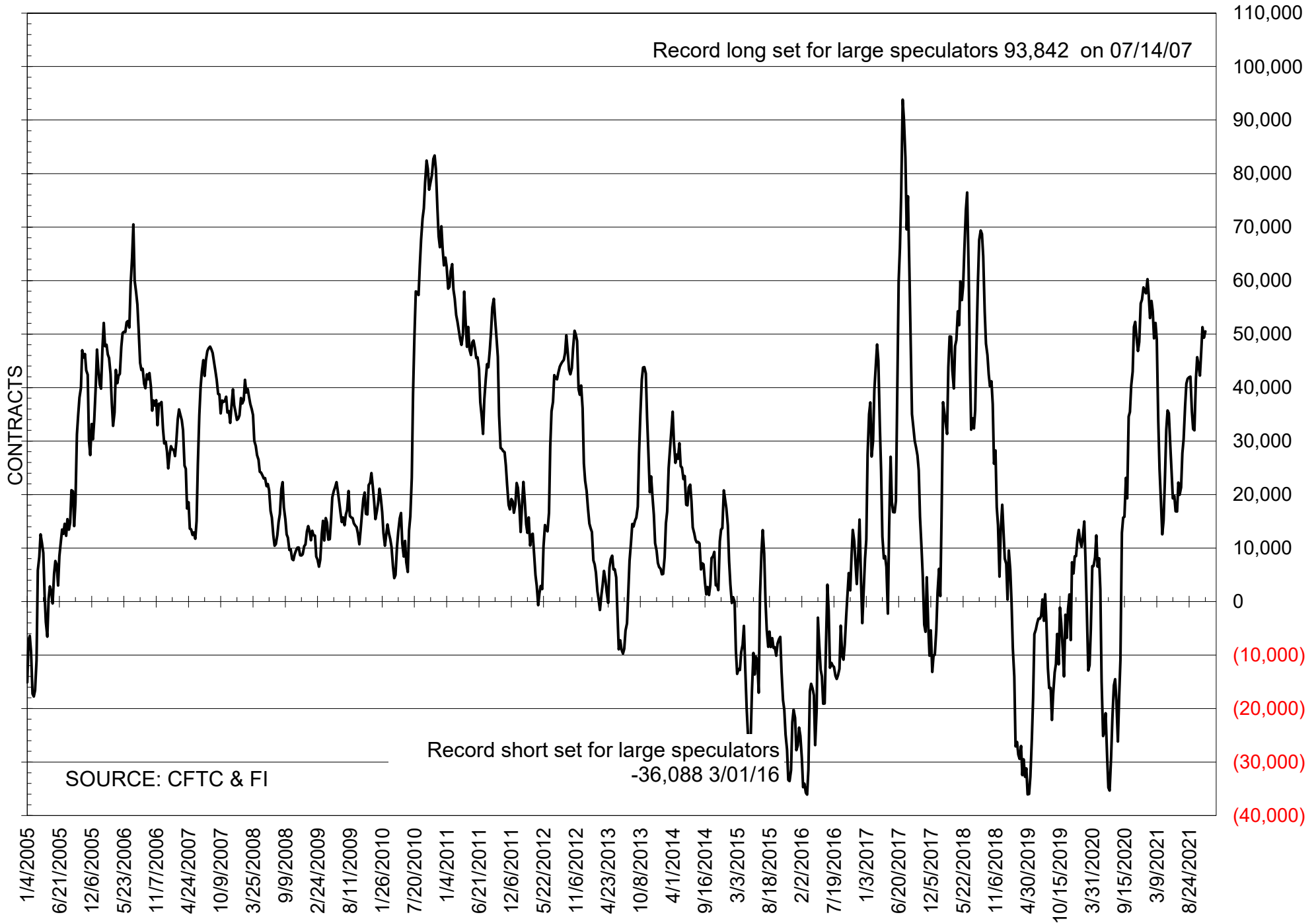
# NET POSITION OF LARGE SPECULATORS IN CORN



# NET POSITION OF FUTURES ONLY LARGE SPECS IN CHICAGO WHEAT

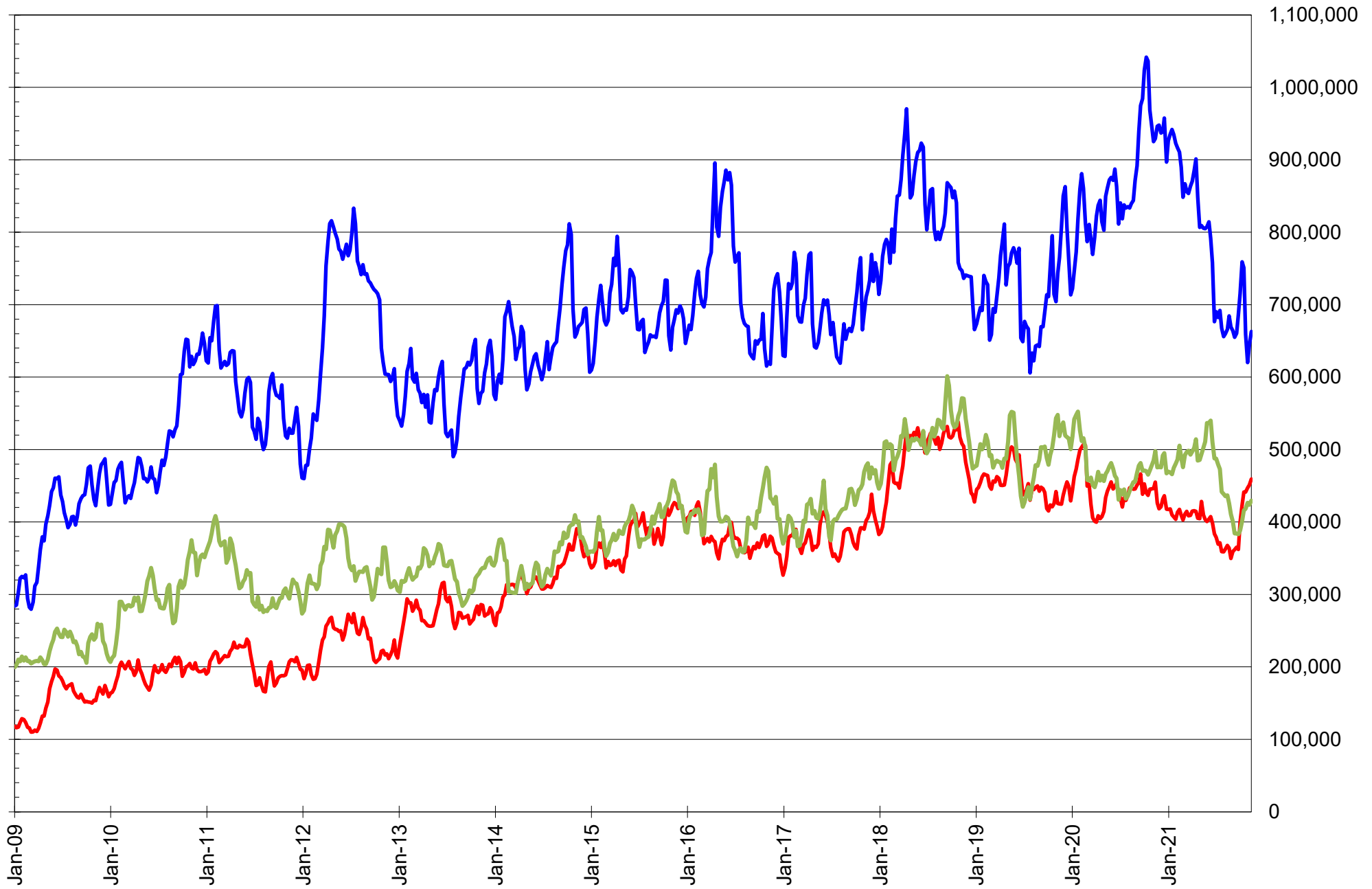


# NET POSITION OF LARGE SPECULATORS IN KANSAS CITY WHEAT





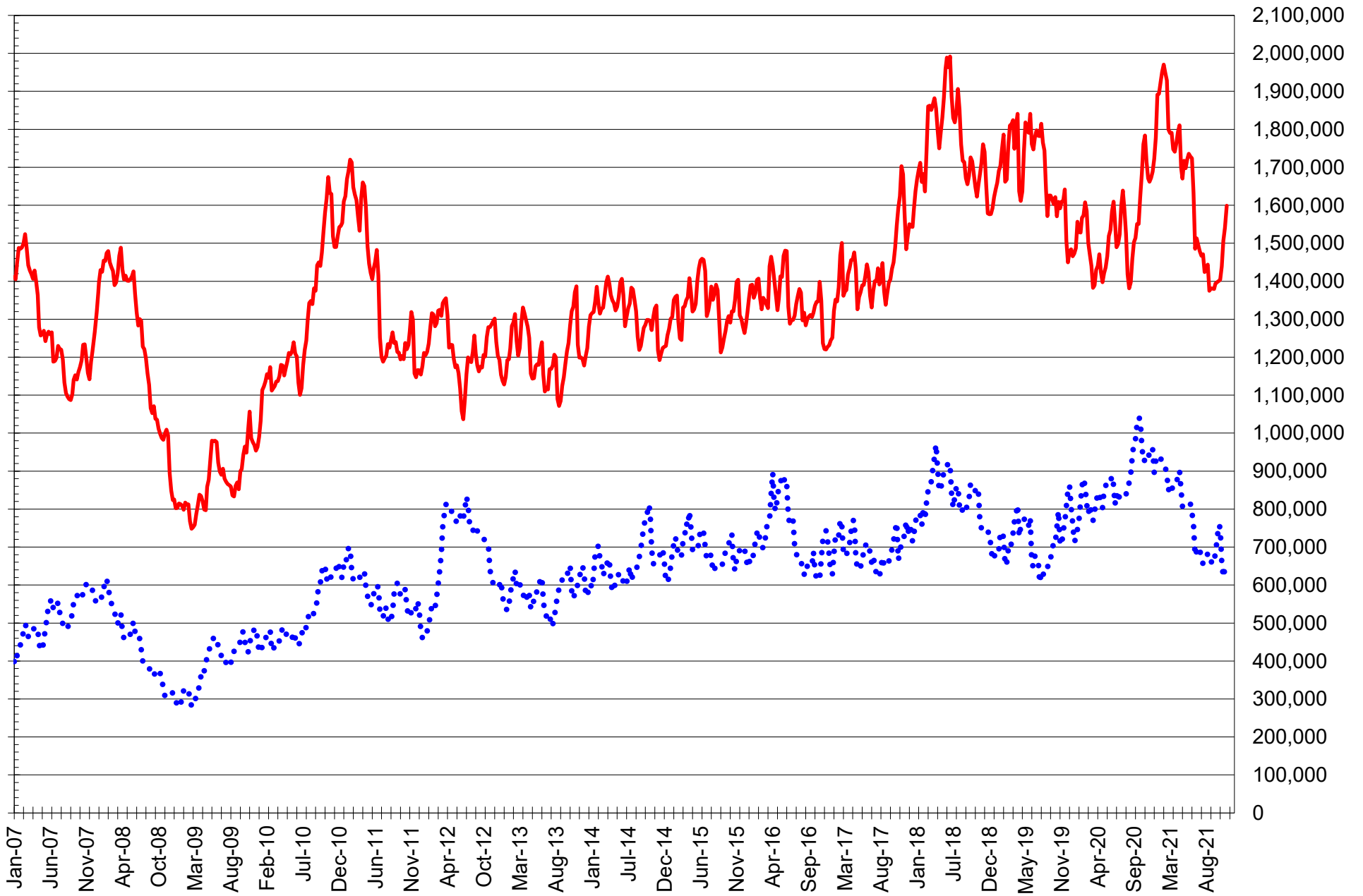
# TOTAL OPEN INTEREST IN SOYBEANS, MEAL AND OIL, FUTURES ONLY



SOURCE: CFTC & FI

— SOYBEANS — SOYBEAN MEAL — SOYBEAN OIL

# TOTAL OPEN INTEREST IN CORN AND SOYBEANS, FUTURES ONLY



SOURCE: CFTC & FI

— CORN

..... SOYBEANS

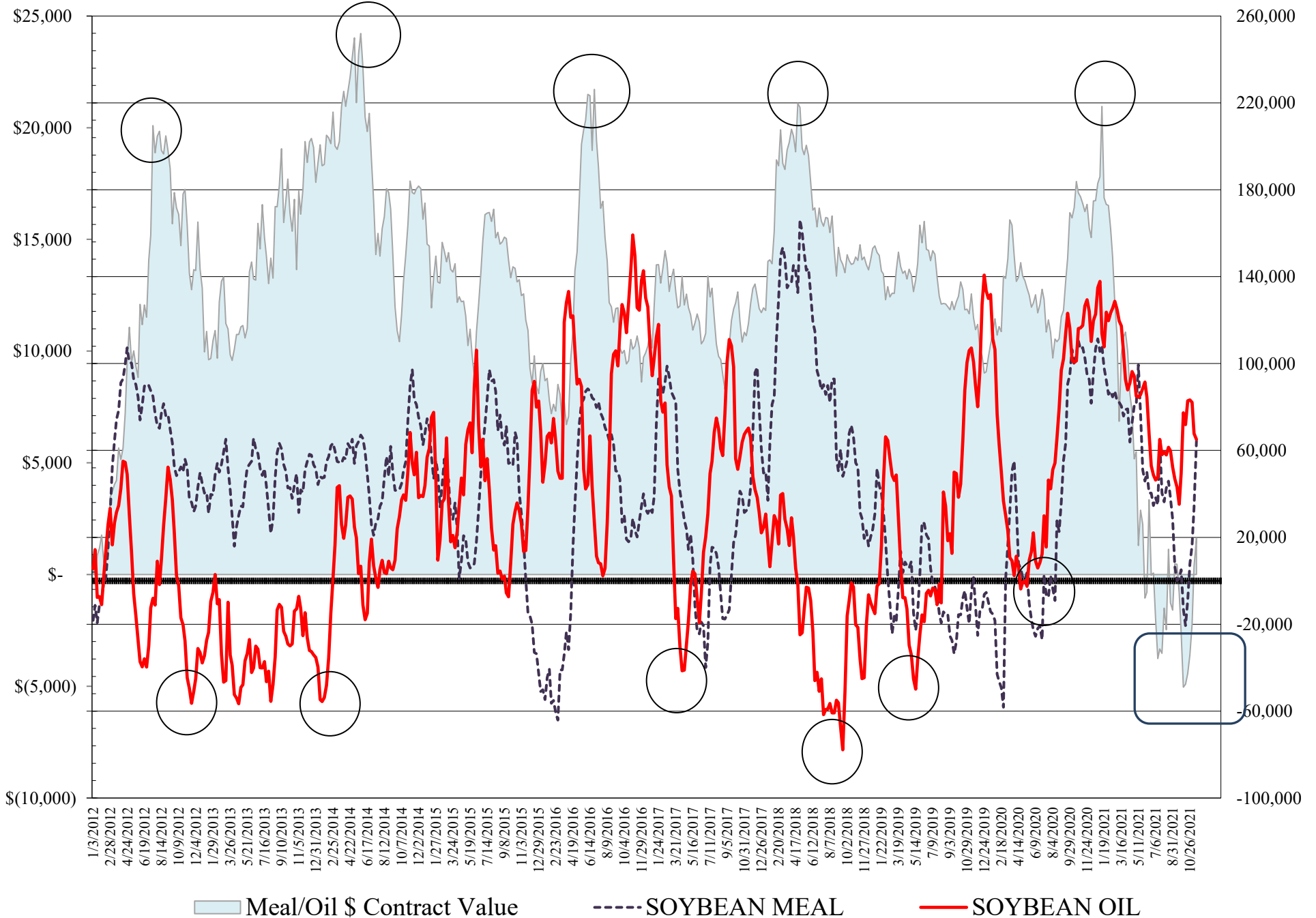
**COMMITMENT OF TRADERS  
FUTURES & OPTIONS NET POSITIONS  
AS OF 11/16/2021  
(IN THOUSAND CONTRACTS)**

	COMMERCIAL				(FUND) NON COMMERCIAL				(SPEC) NON-REPORTABLE			
	16-Nov	9-Nov	2-Nov	26-Oct	16-Nov	9-Nov	2-Nov	26-Oct	16-Nov	9-Nov	2-Nov	26-Oct
<b>WHEAT</b>												
Chicago	-15.3	-5.0	-3.2	14.9	23.7	10.4	9.4	-6.0	-8.4	-5.4	-6.2	-8.9
Kansas City	-53.8	-49.7	-52.2	-47.4	49.9	48.5	51.3	45.8	3.9	1.2	1.0	1.6
Minneapolis	-32.2	-33.2	-33.4	-32.8	25.2	26.5	28.0	26.5	7.0	6.7	5.5	6.3
All Wheat	-101.2	-87.8	-88.9	-65.3	98.7	85.3	88.7	66.3	2.4	2.5	0.2	-1.0
<b>CORN</b>	-356.7	-335.1	-338.8	-266.9	408.6	386.6	394.8	317.9	-51.9	-51.6	-56.0	-51.0
OATS	-0.7	-0.7	-0.9	-0.9	0.7	0.6	0.7	0.6	0.0	0.1	0.3	0.2
<b>SOYBEANS</b>	-10.3	2.0	-25.2	-14.2	53.8	36.9	66.4	49.5	-43.5	-38.9	-41.1	-35.3
SOY OIL	-74.6	-74.3	-95.5	-95.3	65.1	67.8	82.1	83.2	9.5	6.5	13.4	12.0
SOY MEAL	-93.6	-61.8	-44.4	-36.9	64.4	33.8	16.3	7.8	29.2	28.1	28.1	29.1

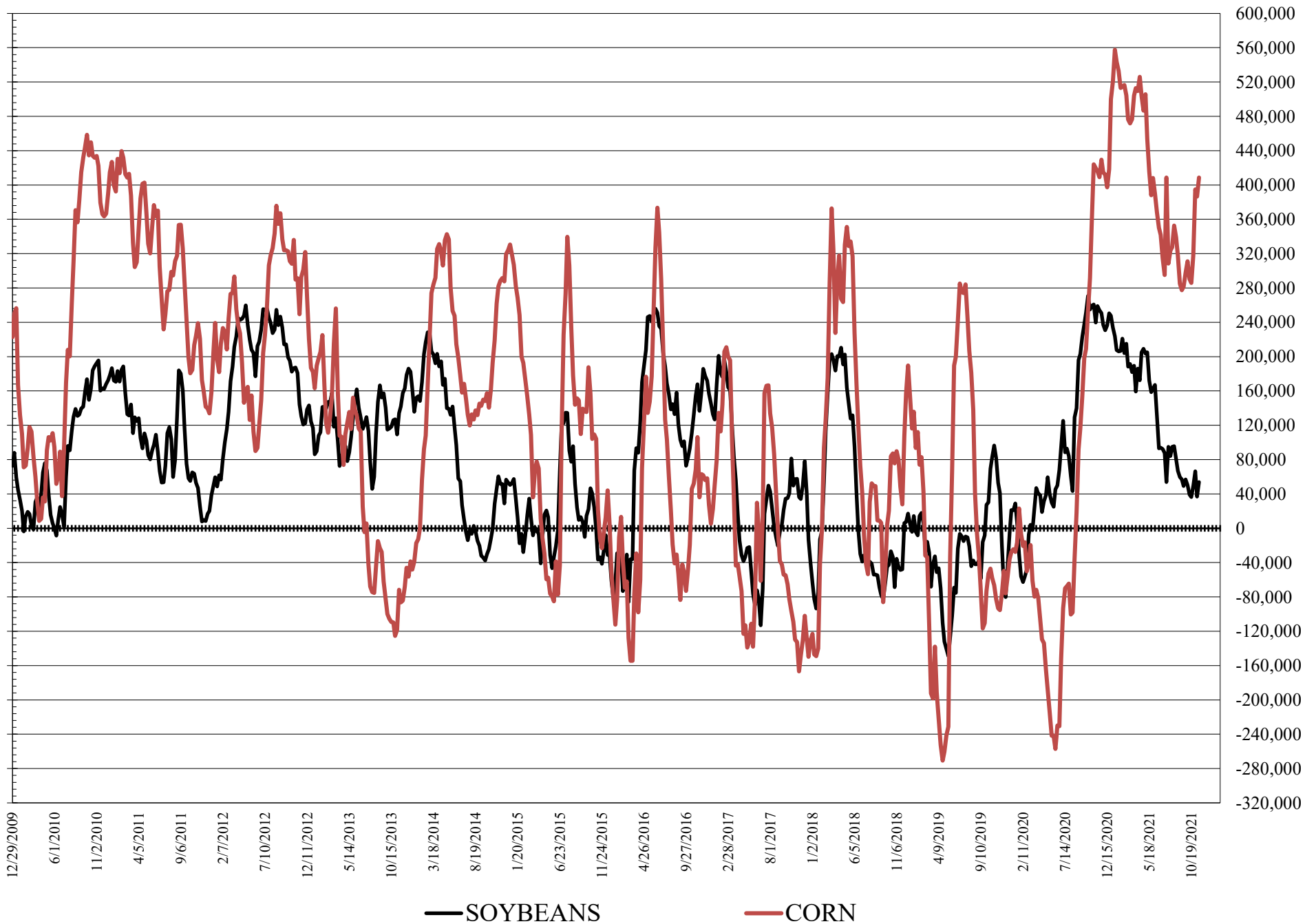
	TOTAL OPEN INTEREST				COMMERCIALS		% HELD BY TRADERS LARGE (FUNDS)		SMALL (NON-REP)	
	16-Nov	9-Nov	2-Nov	26-Oct	LONG	SHORT	LONG	SHORT	LONG	SHORT
<b>WHEAT</b>										
Chicago	565,036	523,259	527,595	495,860	35%	38%	20%	16%	7%	8%
Kansas City	273,576	264,960	265,646	264,135	31%	51%	33%	15%	10%	8%
Minneapolis	82,158	84,442	85,645	82,403	35%	74%	33%	3%	22%	14%
<b>CORN</b>	2,075,468	2,002,111	1,988,278	1,880,818	41%	58%	23%	3%	9%	11%
OATS	6,322	6,208	6,022	6,014						
<b>SOYBEANS</b>	785,185	765,567	728,618	762,618	53%	55%	17%	10%	7%	12%
SOY OIL	495,844	484,856	488,744	478,248	48%	63%	21%	8%	7%	5%
SOY MEAL	519,884	499,172	492,363	484,541	43%	61%	18%	6%	12%	6%

SOURCE: CFTC & FI

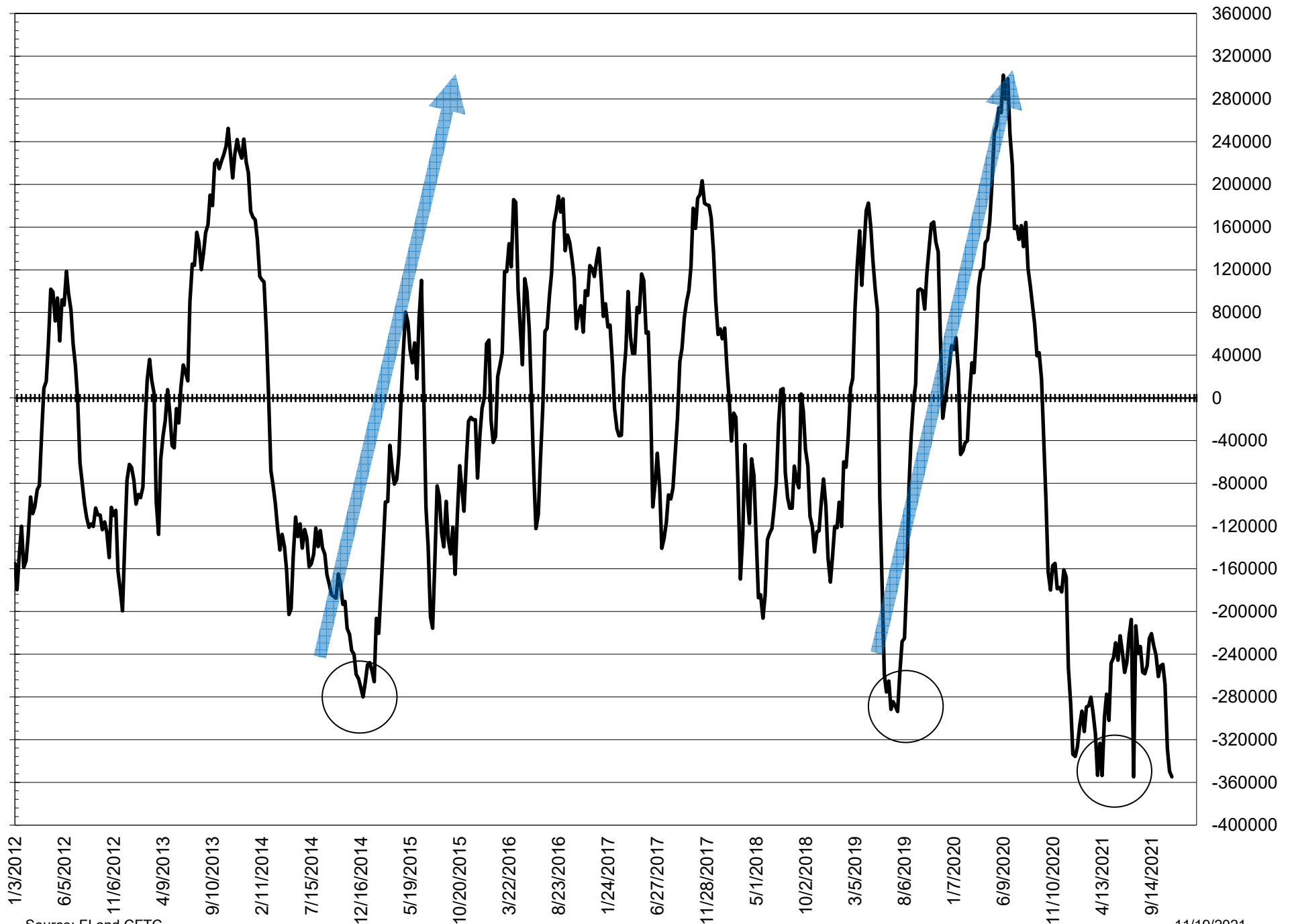
# NET POSITION FUTURES AND OPTIONS OF LARGE SPECULATORS IN SOYBEAN MEAL AND SOYBEAN OIL



# NET POSITION FUTURES AND OPTIONS OF LARGE SPECULATORS IN SOYBEANS AND CORN



# NET POSITION FUTURES AND OPTIONS SPREAD OF LARGE SPECULATORS IN SOYBEANS MINUS CORN



Source: FI and CFTC

11/19/2021

**DISAGGREGATED COMMITMENT OF TRADERS  
FUTURES ONLY NET POSITIONS  
AS OF 11/16/2021  
(IN THOUSAND CONTRACTS)**

	PRODUCER / MERCHANT / PROCESSOR / USER				(INDEX/ETF) SWAP DEALERS				(CTA/CPO/OTHER UNREGISTERED) MANAGED MONEY			
	16-Nov	9-Nov	2-Nov	26-Oct	16-Nov	9-Nov	2-Nov	26-Oct	16-Nov	9-Nov	2-Nov	26-Oct
	WHEAT											
Chicago	(92.7)	(79.8)	(78.6)	(71.4)	64.7	66.3	67.5	80.1	16.2	1.7	4.6	(11.6)
Kansas City	(85.4)	(84.3)	(86.5)	(80.4)	31.0	34.1	34.5	32.5	59.5	56.1	56.0	51.8
Minneapolis	(34.1)	(35.3)	(36.5)	(35.6)	1.0	1.0	1.6	1.4	14.9	16.4	17.3	16.4
All Wheat	(212.1)	(199.3)	(201.6)	(187.3)	96.7	101.4	103.7	114.1	90.7	74.2	77.9	56.7
CORN	(591.9)	(573.3)	(564.1)	(495.9)	251.2	252.5	243.7	243.8	335.3	311.6	318.8	235.2
OATS	(0.7)	(0.8)	(1.0)	(0.9)	0.0	0.1	0.1	0.1	0.5	0.4	0.4	0.3
SOYBEANS	(146.3)	(133.3)	(164.9)	(149.4)	141.4	142.4	145.0	139.2	29.5	9.2	43.0	24.8
SOY OIL	(186.6)	(184.7)	(200.8)	(201.6)	99.4	100.4	97.3	99.8	76.1	72.8	88.2	84.7
SOY MEAL	(186.1)	(158.2)	(140.9)	(132.3)	86.2	87.5	85.8	83.8	37.6	9.1	(6.4)	(15.0)

Managed % of OI				
Chicago W	4%	0%	1%	-3%
Corn	21%	20%	21%	16%

	TOTAL OPEN INTEREST				OTHER REPORTABLE				NON REPORTABLE			
	16-Nov	9-Nov	2-Nov	26-Oct	16-Nov	9-Nov	2-Nov	26-Oct	16-Nov	9-Nov	2-Nov	26-Oct
WHEAT												
Chicago	427,786	405,438	409,137	405,625	20.5	17.5	13.3	12.3	(8.8)	(5.8)	(6.8)	(9.5)
Kansas City	237,136	233,489	235,472	236,941	(9.0)	(6.8)	(4.7)	(5.3)	3.9	0.9	0.7	1.3
Minneapolis	75,836	77,422	76,945	75,079	11.5	11.5	12.2	11.7	6.7	6.3	5.4	6.1
All Wheat	740,758	716,349	721,554	717,645	23.0	22.2	20.7	18.7	1.8	1.4	(0.7)	(2.1)
CORN	1,598,926	1,540,731	1,506,602	1,438,930	63.9	63.7	64.3	72.6	(58.5)	(54.4)	(62.7)	(55.8)
OATS	5,612	5,549	5,301	5,410	0.2	0.2	0.2	0.3	(0.0)	0.1	0.3	0.2
SOYBEANS	662,972	644,317	620,172	658,960	17.4	18.4	15.7	18.5	(42.0)	(36.7)	(38.9)	(33.1)
SOY OIL	429,487	423,882	426,455	418,373	2.4	6.0	2.9	6.1	8.6	5.6	12.5	11.1
SOY MEAL	459,356	451,149	447,015	441,233	36.4	36.5	37.2	38.4	25.9	25.0	24.3	25.1

SOURCE: CFTC & FI

**DISAGGREGATED COMMITMENT OF TRADERS  
FUTURES & OPTIONS NET POSITIONS  
AS OF 11/16/2021  
(IN THOUSAND CONTRACTS)**

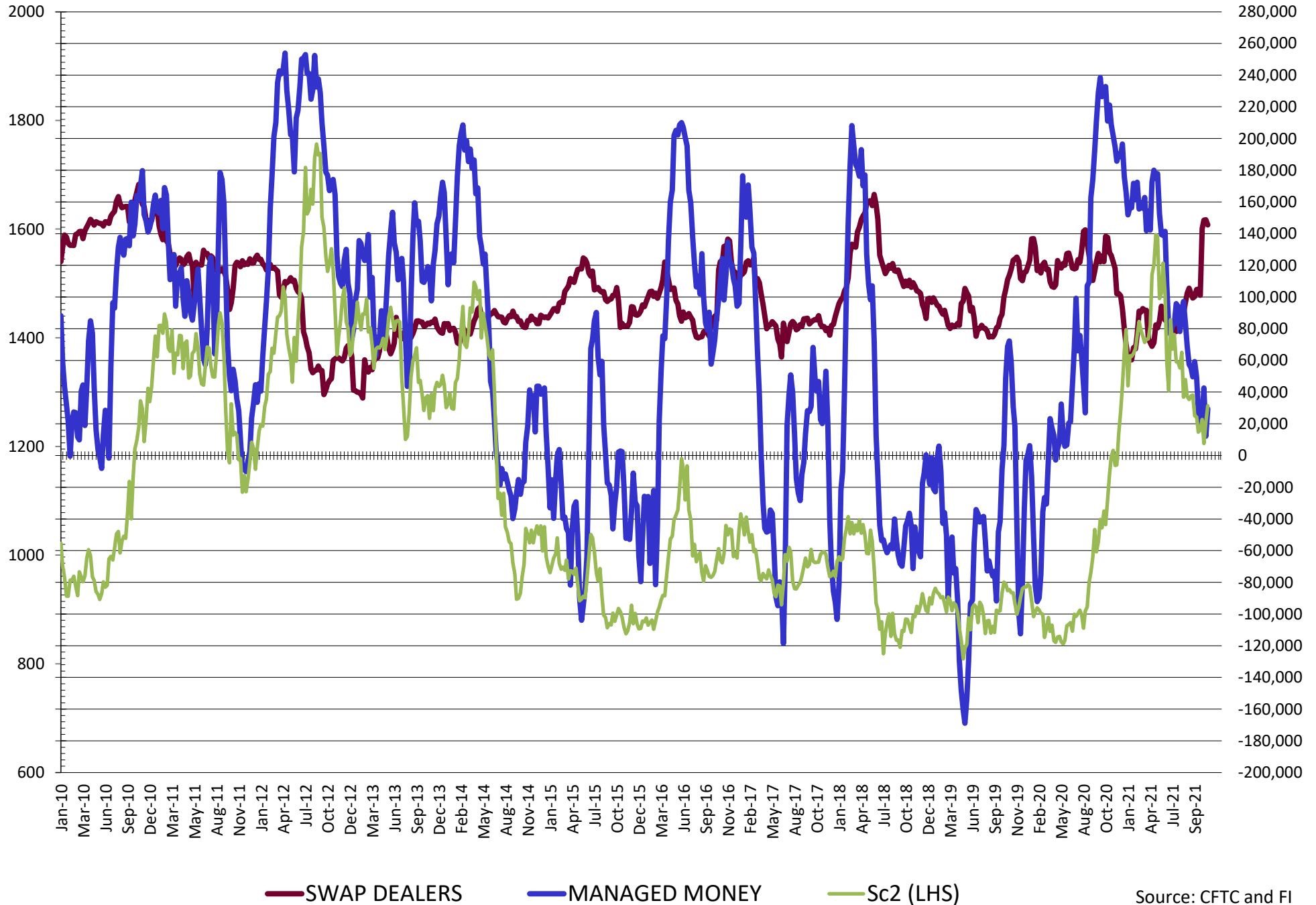
	PRODUCER / MERCHANT / PROCESSOR / USER				(INDEX/ETF) SWAP DEALERS				(CTA/CPO/OTHER UNREGISTERED) MANAGED MONEY			
	16-Nov	9-Nov	2-Nov	26-Oct	16-Nov	9-Nov	2-Nov	26-Oct	16-Nov	9-Nov	2-Nov	26-Oct
	WHEAT											
Chicago	(85.2)	(70.5)	(70.6)	(64.1)	70.0	65.6	67.4	79.1	15.3	3.3	5.9	(8.6)
Kansas City	(84.2)	(82.7)	(85.8)	(79.0)	30.5	33.1	33.6	31.6	60.6	57.4	57.3	53.0
Minneapolis	(33.3)	(34.4)	(35.4)	(34.4)	1.2	1.2	1.9	1.6	15.0	16.5	17.4	16.5
All Wheat	(202.8)	(187.6)	(191.8)	(177.5)	101.6	99.8	102.9	112.2	90.8	77.2	80.6	60.9
CORN	(588.0)	(568.6)	(559.8)	(491.8)	231.3	233.5	221.0	225.0	341.1	319.6	324.6	244.8
OATS	(0.7)	(0.7)	(1.0)	(0.9)	0.0	0.1	0.1	0.1	0.5	0.4	0.4	0.3
SOYBEANS	(155.7)	(146.8)	(173.7)	(157.4)	145.4	148.7	148.4	143.2	29.5	12.1	42.7	23.9
SOY OIL	(173.9)	(174.6)	(193.1)	(195.7)	99.3	100.4	97.6	100.4	76.2	72.6	88.7	85.6
SOY MEAL	(180.5)	(150.6)	(131.9)	(123.0)	86.9	88.7	87.4	86.1	37.5	9.3	(6.3)	(15.1)

	TOTAL OPEN INTEREST				OTHER REPORTABLE				NON REPORTABLE			
	16-Nov	9-Nov	2-Nov	26-Oct	16-Nov	9-Nov	2-Nov	26-Oct	16-Nov	9-Nov	2-Nov	26-Oct
	WHEAT											
Chicago	565,036	523,259	527,595	495,860	8.4	7.1	3.5	2.6	(8.4)	(5.4)	(6.2)	(8.9)
Kansas City	273,576	264,960	265,646	264,135	(10.7)	(8.9)	(6.0)	(7.2)	3.9	1.2	1.0	1.6
Minneapolis	82,158	84,442	85,645	82,403	10.2	10.0	10.6	9.9	7.0	6.7	5.5	6.3
All Wheat	920,770	872,661	878,886	842,398	8.0	8.1	8.1	5.4	2.4	2.5	0.2	(1.0)
CORN	2,075,468	2,002,111	1,988,278	1,880,818	67.4	67.0	70.3	73.1	(51.9)	(51.6)	(51.6)	(51.6)
OATS	6,322	6,208	6,022	6,014	0.2	0.2	0.3	0.3	(0.0)	0.1	0.3	0.2
SOYBEANS	785,185	765,567	728,618	762,618	24.3	24.8	23.7	25.6	(43.5)	(38.9)	(41.1)	(35.3)
SOY OIL	495,844	484,856	488,744	478,248	(11.2)	(4.8)	(6.6)	(2.4)	9.5	6.5	13.4	12.0
SOY MEAL	519,884	499,172	492,363	484,541	26.9	24.5	22.6	23.0	29.2	28.1	28.1	29.1

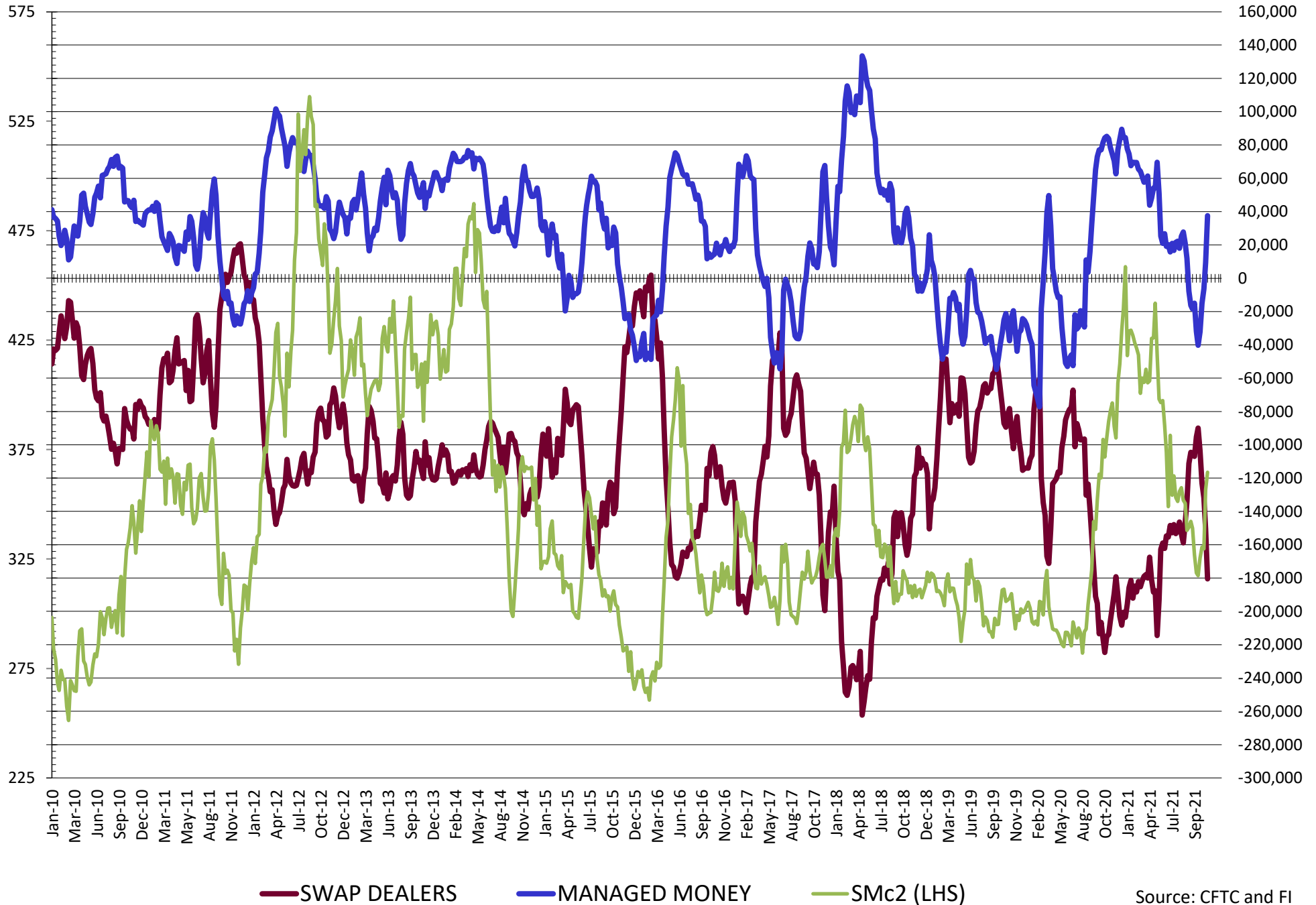
SOURCE: CFTC & FI



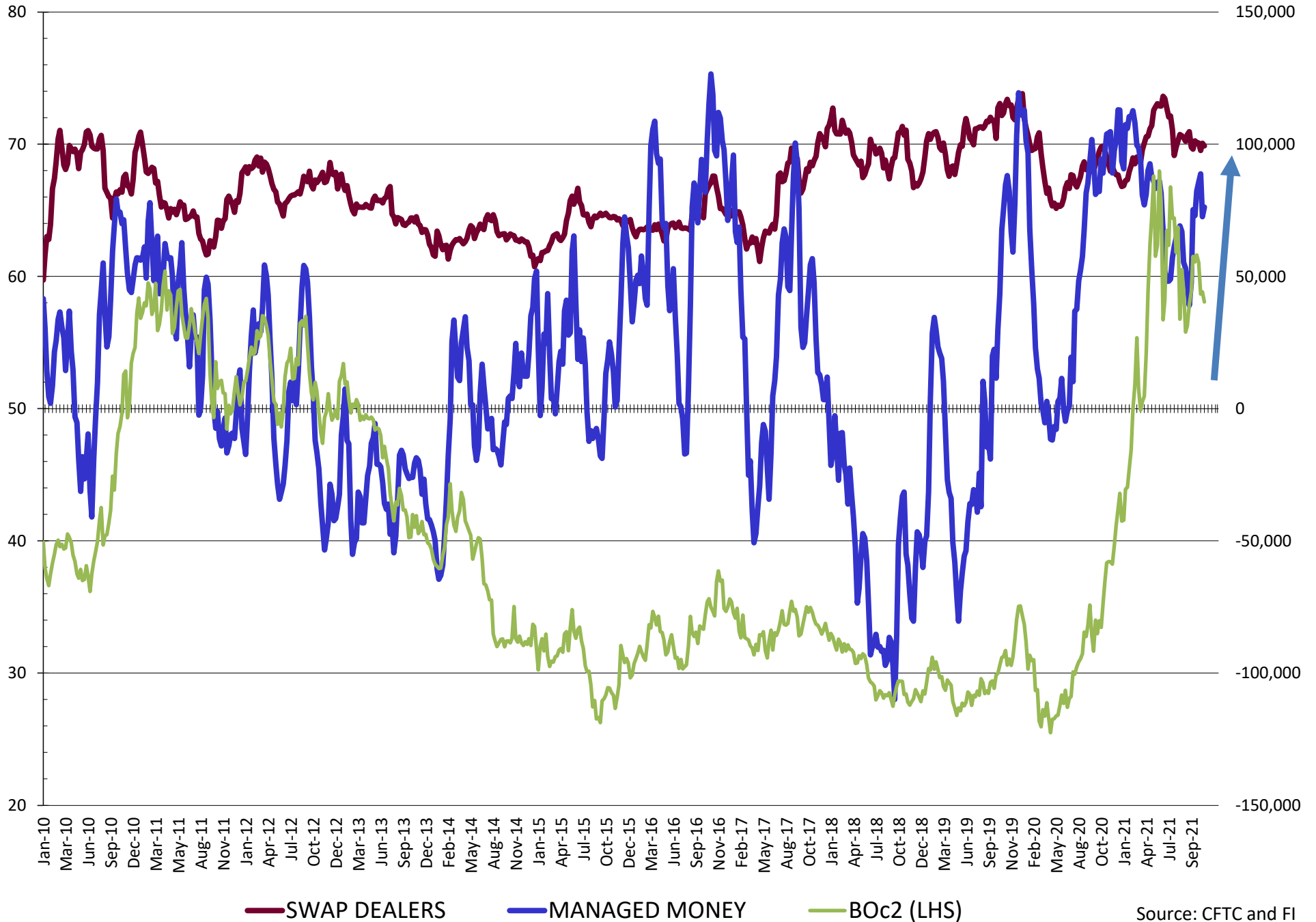
# NET POSITION FUTURES AND OPTIONS OF SWAP AND MANAGED FUNDS IN SOYBEANS



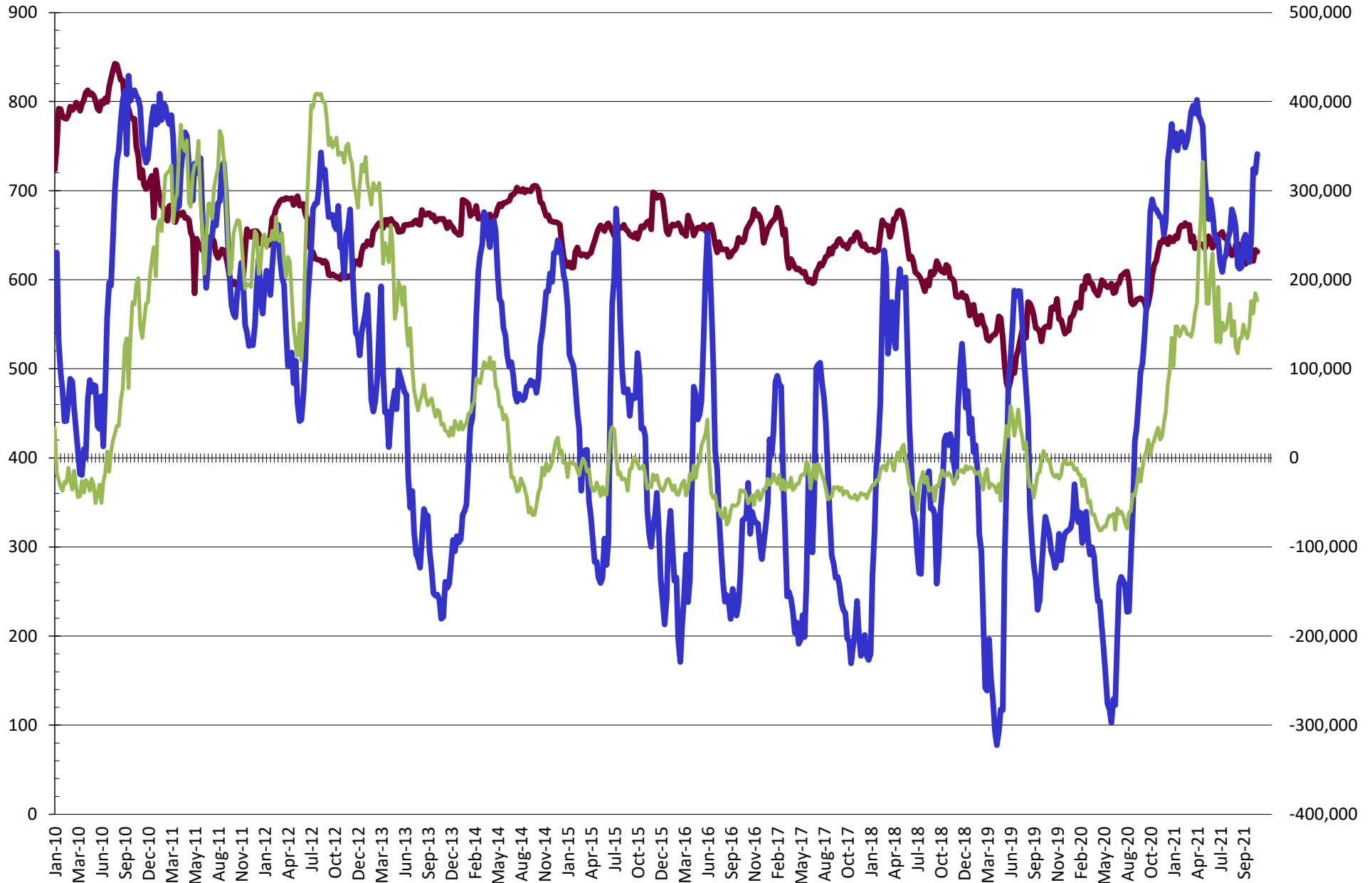
# NET POSITION FUTURES AND OPTIONS OF SWAP AND MANAGED FUNDS IN SOYBEAN MEAL



# NET POSITION FUTURES AND OPTIONS OF SWAP AND MANAGED FUNDS IN SOYBEAN OIL

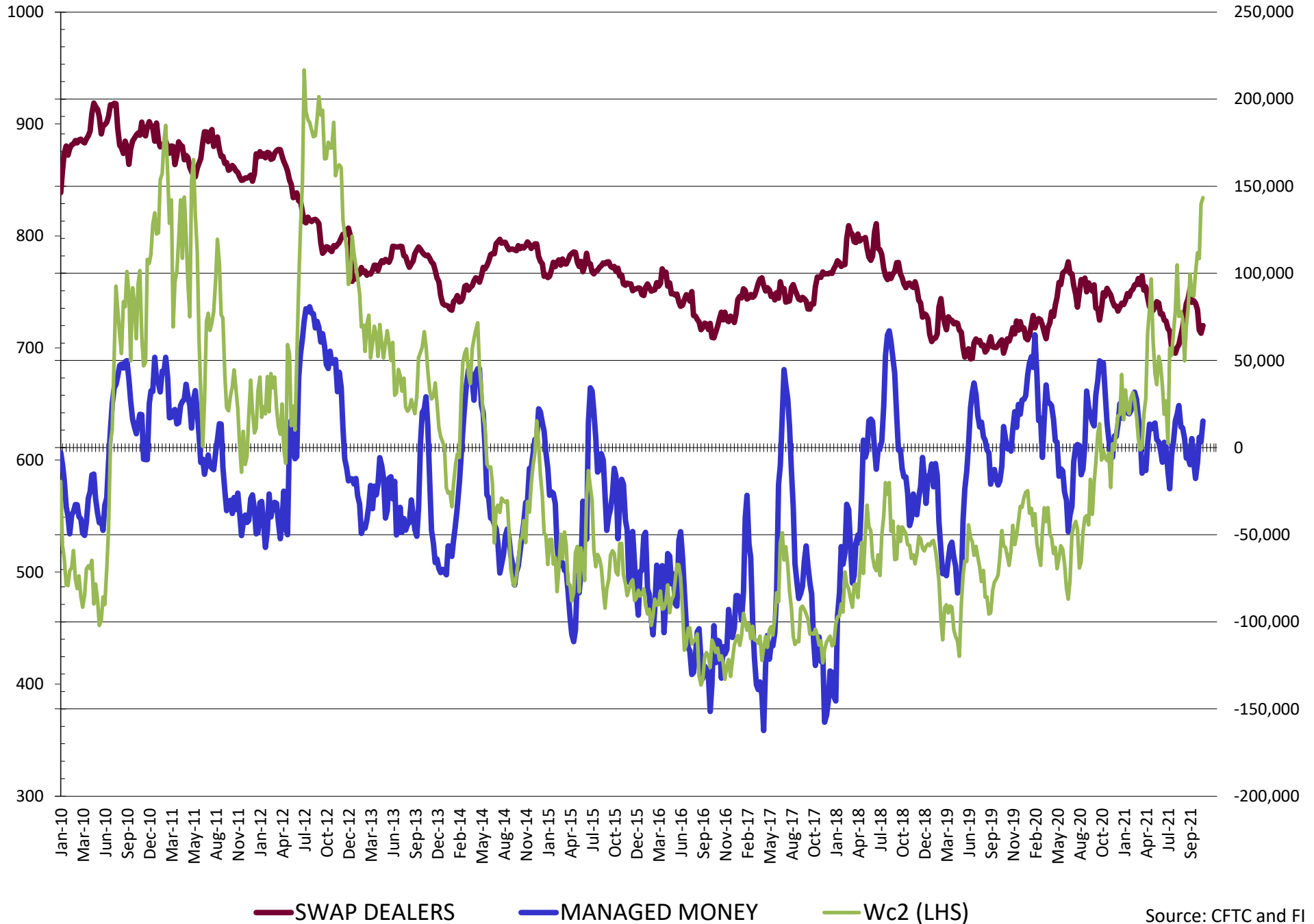


# NET POSITION FUTURES AND OPTIONS OF SWAP AND MANAGED FUNDS IN CORN

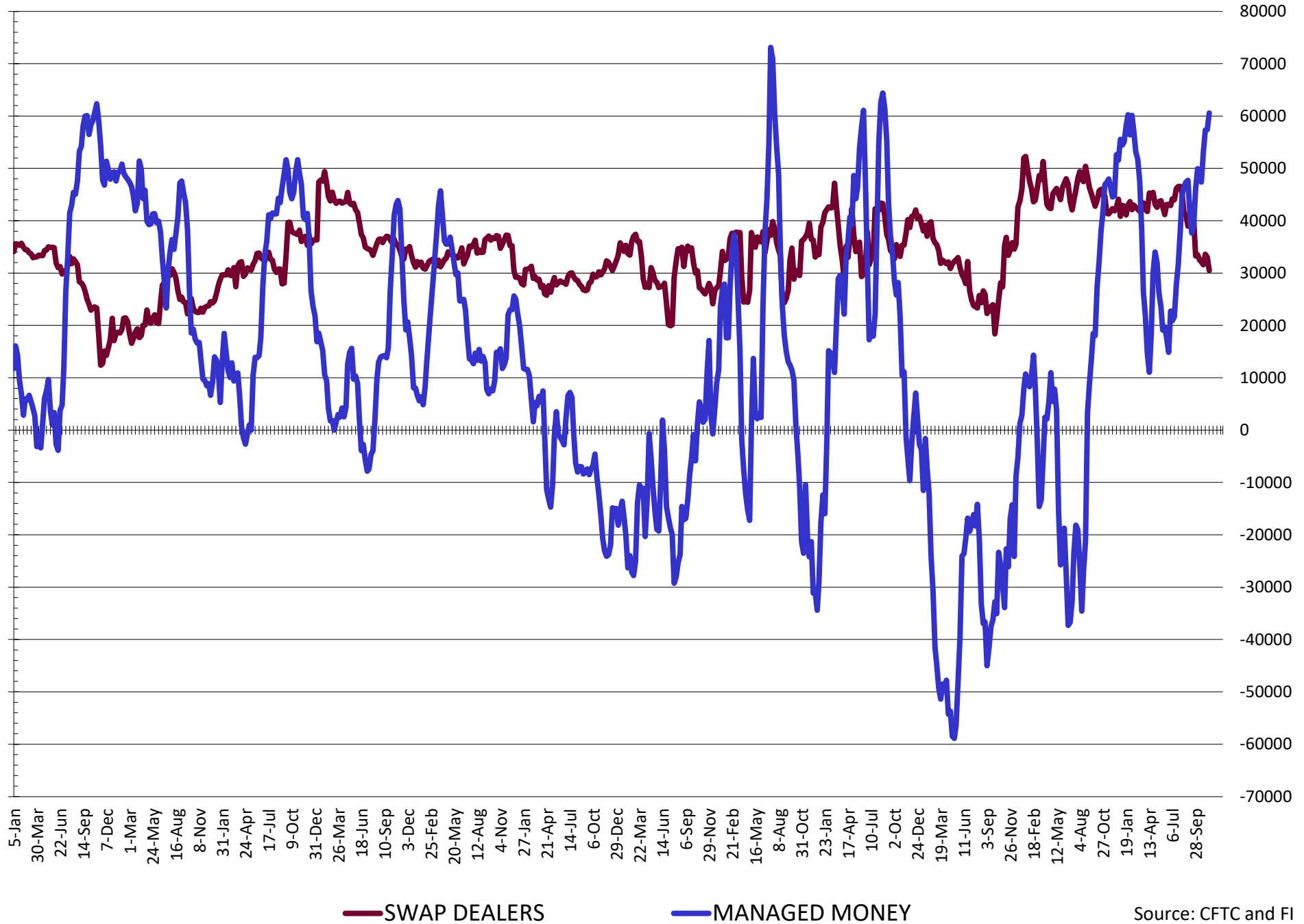


— SWAP DEALERS     
 — MANAGED MONEY     
 — Cc2 (LHS)

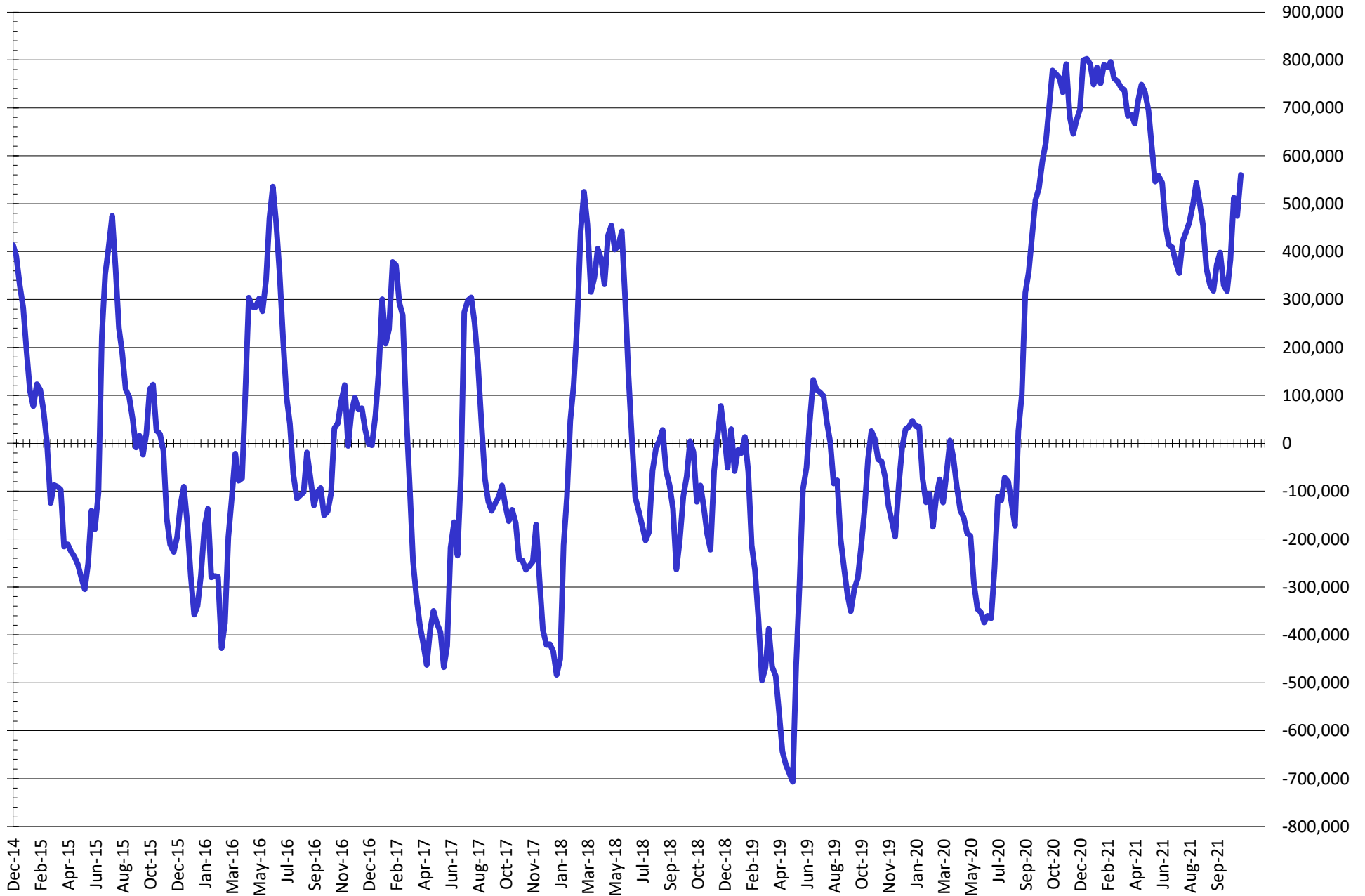
# NET POSITION FUTURES AND OPTIONS OF SWAP AND MANAGED FUNDS IN CHICAGO WHEAT



# NET POSITION FUTURES AND OPTIONS OF SWAP DEALERS AND MANAGED FUNDS IN KANSAS WHEAT



# NET POSITION FUTURES AND OPTIONS OF SWAP AND MANAGED FUNDS IN COMBINED SRW, HRW, CORN, SOYBEANS, SOYMEAL AND SOYOIL



— Net Managed Money

Source: CFTC and FI  
11/19/2021

**COMMITMENT OF TRADERS**  
**FUTURES & OPTIONS NET POSITIONS (INDEX BROKEN OUT)**  
**AS OF 11/16/2021**  
(IN THOUSAND CONTRACTS)

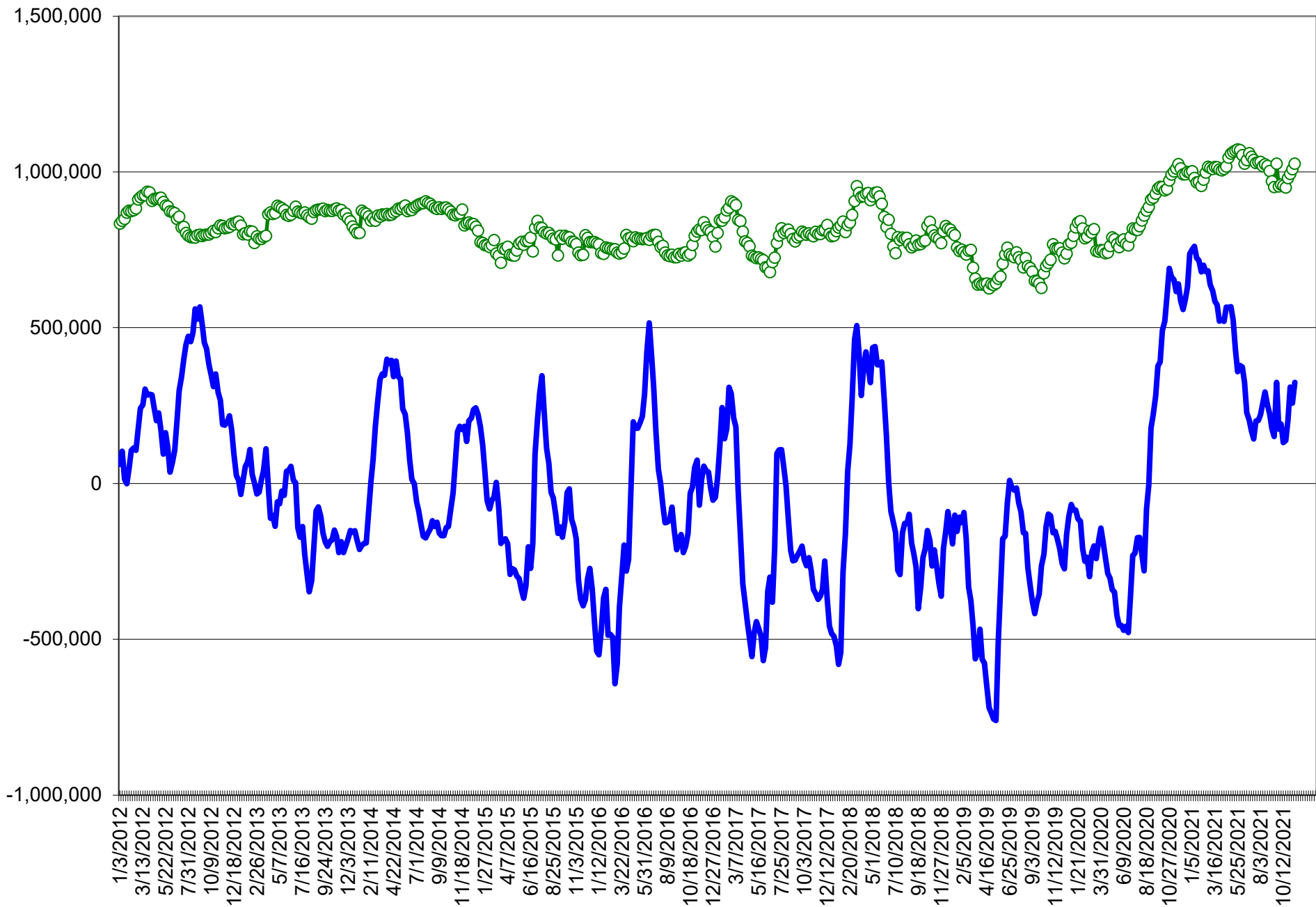
	COMMERCIAL				(FUND) NON COMMERCIAL				(SPEC) NON-REPORTABLE			
	16-Nov	9-Nov	2-Nov	26-Oct	16-Nov	9-Nov	2-Nov	26-Oct	16-Nov	9-Nov	2-Nov	26-Oct
	WHEAT											
Chicago	(106.9)	(92.3)	(96.2)	(84.4)	(8.3)	(18.9)	(13.1)	(29.2)	(8.4)	(5.4)	(6.2)	(8.9)
Kansas City	(94.2)	(89.8)	(92.1)	(87.5)	29.3	27.1	30.4	26.9	3.9	1.2	1.0	1.6
Minneapolis	-	-	-	-	-	-	-	-	-	-	-	-
All Wheat	(201.1)	(182.1)	(188.3)	(171.8)	21.0	8.2	17.2	(2.3)	(4.6)	(4.2)	(5.2)	(7.3)
CORN	(607.9)	(586.0)	(584.8)	(514.1)	250.4	232.1	245.8	174.7	(51.9)	(51.6)	(56.0)	(51.0)
OATS	-	-	-	-	-	-	-	-	-	-	-	-
SOYBEANS	(149.4)	(139.3)	(168.2)	(154.6)	(3.7)	(16.4)	10.5	(3.0)	(43.5)	(38.9)	(41.1)	(35.3)
SOY OIL	(165.4)	(164.8)	(185.3)	(185.2)	30.3	34.1	47.0	49.3	9.5	6.5	13.4	12.0
SOY MEAL	(165.2)	(133.6)	(115.0)	(104.6)	26.0	(0.5)	(11.3)	(15.7)	29.2	28.1	28.1	29.1

	TOTAL OPEN INTEREST				(INDEX) COMMERCIAL INDEX TRADERS				(INDEX) % NET OF TOTAL OPEN INTEREST			
	16-Nov	9-Nov	2-Nov	26-Oct	16-Nov	9-Nov	2-Nov	26-Oct	16-Nov	9-Nov	2-Nov	26-Oct
	WHEAT											
Chicago	565,036	523,259	527,595	495,860	123.6	116.6	115.6	122.6	21.9%	22.3%	21.9%	24.7%
Kansas City	273,576	264,960	265,646	264,135	61.0	61.5	60.8	58.9	22.3%	23.2%	22.9%	22.3%
Minneapolis	-	-	-	-	-	-	-	-	-	-	-	-
All Wheat	838,612	788,219	793,241	759,995	184.7	178.1	176.3	181.5	22.0%	22.6%	22.2%	23.9%
CORN	2,075,468	2,002,111	1,988,278	1,880,818	409.4	405.5	395.0	390.4	19.7%	20.3%	19.9%	20.8%
OATS	-	-	-	-	-	-	-	-	-	-	-	-
SOYBEANS	785,185	765,567	728,618	762,618	196.7	194.6	198.9	192.9	25.0%	25.4%	27.3%	25.3%
SOY OIL	495,844	484,856	488,744	478,248	125.6	124.2	124.9	123.8	25.3%	25.6%	25.6%	25.9%
SOY MEAL	519,884	499,172	492,363	484,541	109.9	106.0	98.2	91.3	21.1%	21.2%	19.9%	18.8%

SOURCE: CFTC & FI



# NET POSITION FUTURES AND OPTIONS OF SPECULATORS AND INDEX FUNDS IN COMBINED SRW, HRW, CORN, SOYBEANS, SOYMEAL AND SOYOIL



Source: CFTC and FI

○ Net Index

— Net Speculator

## Traditional Daily Estimate of Funds 11/16/21

	(Neg)-"Short"	Pos-"Long"			
Actual less Est.	(3.1)	(6.7)	(6.4)	10.4	(3.1)
	<b>Corn</b>	<b>Bean</b>	<b>Chi. Wheat</b>	<b>Meal</b>	<b>Oil</b>
Actual	399.2	46.9	36.8	74.0	78.6
17-Nov	8.0	18.0	8.0	6.0	1.0
18-Nov	(4.0)	(1.0)	1.0	1.0	(6.0)
19-Nov					
22-Nov					
23-Nov					
<b>FI Est. of Futures Only 11/16/21</b>	<b>403.2</b>	<b>63.9</b>	<b>45.8</b>	<b>81.0</b>	<b>73.6</b>
<b>FI Est. Futures &amp; Options</b>	<b>412.6</b>	<b>70.8</b>	<b>32.7</b>	<b>71.4</b>	<b>60.1</b>
Futures only record long "Traditional Funds"	547.7 1/26/2021	280.9 11/10/2020	86.5 8/7/2018	167.5 5/1/2018	160.2 11/1/2016
Futures only record short	(235.0) 6/9/2020	(118.3) 4/30/2019	(130.0) 4/25/2017	(49.5) 3/1/2016	(69.8) 9/18/2018
Futures and options record net long	557.6 1/12/2021	270.9 10/6/2020	64.8 8/7/2012	132.1 5/1/2018	159.2 1/1/2016
Futures and options record net short	(270.6) 4/26/2019	(132.0) 4/30/2019	(143.3) 4/25/2017	(64.1) 3/1/2016	(77.8) 9/18/2018

## Managed Money Daily Estimate of Funds 11/16/21

	Corn	Bean	Chi. Wheat	Meal	Oil
Latest CFTC Fut. Only	335.3	29.5	16.2	37.6	76.1
Latest CFTC F&O	341.1	29.5	15.3	37.5	76.2
	Corn	Bean	Chi. Wheat	Meal	Oil
FI Est. Managed Fut. Only	339	47	25	45	71
FI Est. Managed Money F&O	345	46	24	44	71

## Index Funds Latest Positions (as of last Tuesday)

Index Futures & Options	409.4	196.7	123.6	NA	125.6
Change From Previous Week	3.9	2.0	7.0	NA	1.4

Source: Reuters, CFTC & FI (FI est. are noted with latest date)

# Disclaimer

TO CLIENTS/PROSPECTS OF FUTURES INTERNATIONAL, SEE RISK DISCLOSURE BELOW:

THIS COMMUNICATION IS CONVEYED AS A SOLICITATION FOR ENTERING INTO A DERIVATIVES TRANSACTION.

Any trading recommendations and market or other information to Customer by Futures International (FI), although based upon information obtained from sources believed by FI to be reliable may not be accurate and may be changed without notice to customer. FI makes no guarantee as to the accuracy or completeness of any of the information or recommendations furnished to Customer. Customer understands that FI, its managers, employees and/or affiliates may have a position in commodity futures, options or other derivatives which may not be consistent with the recommendations furnished by FI to Customer.

The risk of trading futures and options and other derivatives involves a substantial risk of loss and is not suitable for all persons. In purchasing an option, the risk is limited to the premium paid, and all commissions and fees involved with the trade. When an option is shorted or written, the writer of the option has unlimited risk with respect to the option written. The use of options strategies such as a straddles and strangles involve multiple option positions and may substantially increase the amount of commissions and fees paid to execute the strategy. Option prices do not necessarily move in tandem with cash or futures prices. Each person must consider whether a particular trade, combination of trades or strategy is suitable for that person's financial means and objectives.

This material may include discussions of seasonal patterns, however, futures prices have already factored in the seasonal aspects of supply and demand, and seasonal patterns are no indication of future market trends. Finally, past performance is not indicative of future results.

This communication may contain links to third party websites which are not under the control of FI and FI is not responsible for their content. Products and services are offered only in jurisdictions where solicitation and sale are lawful, and in accordance with applicable laws and regulations in each such jurisdiction.