

CFTC COMMITMENT OF TRADERS REPORT

As of 11/2/2021

TRADITIONAL FUNDS net position changes

Wed to Tue, in 000 contracts

	Corn	Bean	Meal	Oil	Chi. Wheat	KC Wheat	Min Wheat
Futures Only	75.3	15.5	7.4	0.4	17.1	4.7	1.4
Futures & Options Combined	76.9	16.9	8.5	(1.1)	15.4	5.5	1.5

TRADITIONAL COMMERCIAL net position changes

	Corn	Bean	Meal	Oil	Chi. Wheat	KC Wheat	Min Wheat
Futures Only	(68.3)	(9.7)	(6.6)	(1.8)	(19.9)	(4.1)	(0.7)
Futures & Options Combined	(71.9)	(11.0)	(7.5)	(0.2)	(18.2)	(4.8)	(0.7)

MANAGED MONEY net position changes

	Corn	Bean	Meal	Oil	Chi. Wheat	KC Wheat	Min Wheat
Futures Only	83.6	18.2	8.5	3.5	16.2	4.2	0.9
Futures & Options Combined	79.8	18.8	8.8	3.1	14.5	4.3	0.9

SWAP DEALERS net position changes

	Corn	Bean	Meal	Oil	Chi. Wheat	KC Wheat	Min Wheat
Futures Only	(0.1)	5.8	2.0	(2.6)	(12.6)	2.0	0.2
Futures & Options Combined	(4.0)	5.2	1.3	(2.8)	(11.7)	2.0	0.3

PRODUCERS/END USERS net position changes

	Corn	Bean	Meal	Oil	Chi. Wheat	KC Wheat	Min Wheat
Futures Only	(68.2)	(15.5)	(8.6)	0.8	(7.3)	(6.1)	(0.9)
Futures & Options Combined	(68.0)	(16.2)	(8.9)	2.6	(6.5)	(6.9)	(1.0)

INDEX net position changes

	Corn	Bean	Meal	Oil	Chi. Wheat	KC Wheat	Min Wheat
Futures & Options Combined	4.6	6.0	6.9	1.1	(7.0)	1.8	NA

SUPPLEMENTAL NON-COMMERCIAL net position changes

	Corn	Bean	Meal	Oil	Chi. Wheat	KC Wheat	Min Wheat
Futures & Options Combined	71.1	13.5	4.4	(2.3)	16.1	3.5	NA

OPEN INTEREST net position changes

Wed to Tue, in 000 contracts

	Corn	Bean	Meal	Oil	Chi. Wheat	KC Wheat	Min Wheat
Futures Only	67.7	(38.8)	5.8	8.1	3.5	(1.5)	1.9
Futures & Options Combined	107.5	(34.0)	7.8	10.5	31.7	1.5	3.2

Source: CFTC and FI

Wed to Tue, in 000 contracts

**COMMITMENT OF TRADERS
FUTURES ONLY NET POSITIONS
AS OF 11/02/2021
(IN THOUSAND CONTRACTS)**

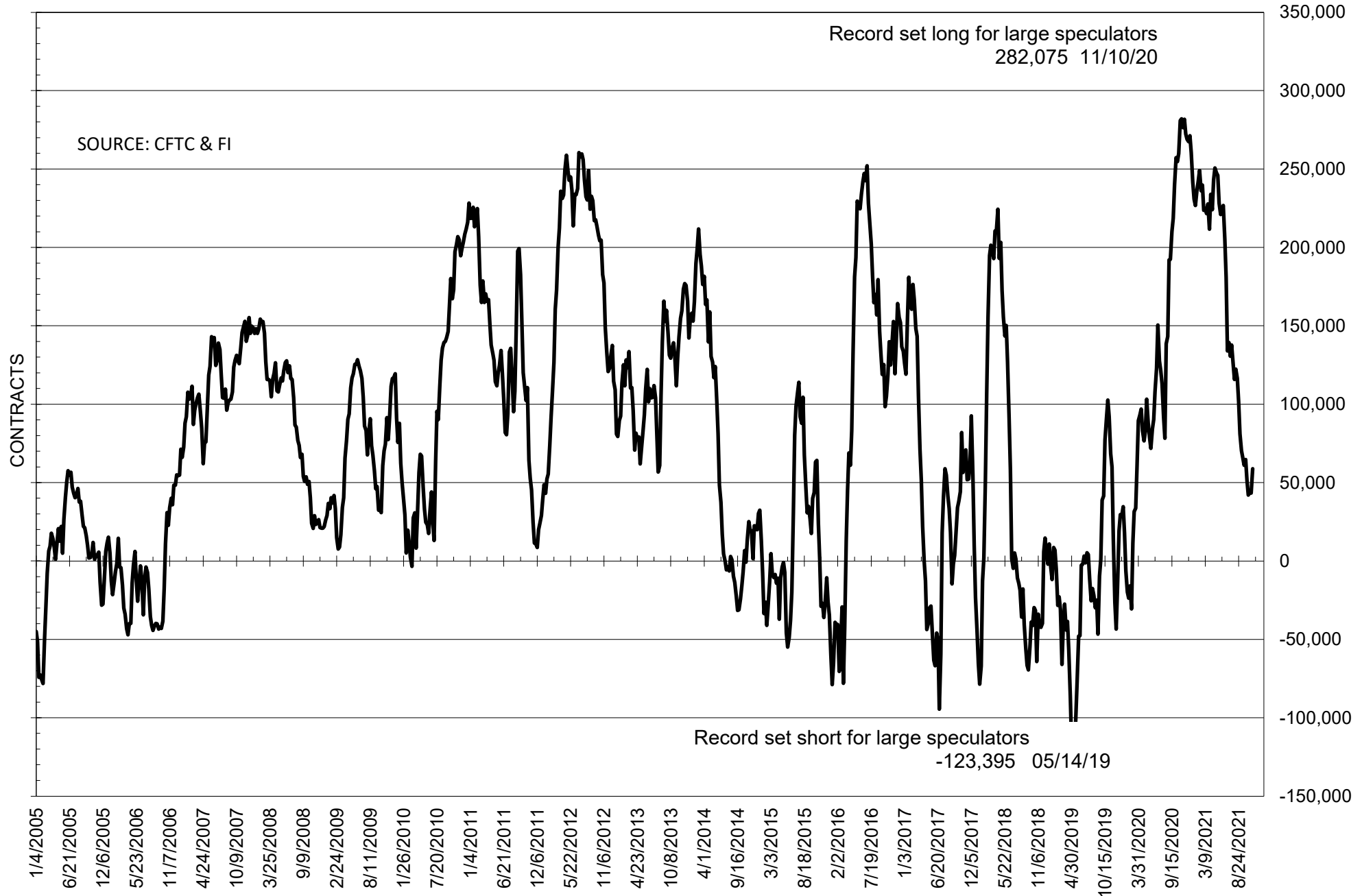
	COMMERCIAL				(FUND) NON COMMERCIAL				(SPEC) NON-REPORTABLE			
	2-Nov	26-Oct	19-Oct	12-Oct	2-Nov	26-Oct	19-Oct	12-Oct	2-Nov	26-Oct	19-Oct	12-Oct
	WHEAT											
Chicago	-11.1	8.8	18.2	13.0	17.9	0.8	-8.6	-4.5	-6.8	-9.5	-9.6	-8.4
Kansas City	-52.0	-47.9	-43.2	-45.0	51.3	46.6	42.2	44.3	0.7	1.3	0.9	0.7
Minneapolis	-34.8	-34.2	-31.4	-29.7	29.5	28.1	26.2	24.5	5.4	6.1	5.3	5.2
All Wheat	-98.0	-73.3	-56.4	-61.7	98.7	75.4	59.8	64.3	-0.7	-2.1	-3.4	-2.6
CORN	-320.4	-252.1	-218.2	-223.3	383.1	307.8	277.0	279.3	-62.7	-55.8	-58.9	-56.0
OATS	-0.9	-0.8	-0.7	-1.0	0.6	0.6	0.6	0.6	0.3	0.2	0.1	0.3
SOYBEANS	-19.9	-10.2	-9.6	-9.7	58.8	43.2	43.5	42.0	-38.9	-33.1	-34.0	-32.3
SOY OIL	-103.6	-101.8	-97.5	-84.8	91.1	90.7	87.1	75.3	12.5	11.1	10.5	9.5
SOY MEAL	-55.1	-48.5	-32.2	-18.1	30.8	23.4	9.1	-2.6	24.3	25.1	23.1	20.6

Oats positions thin to be reported

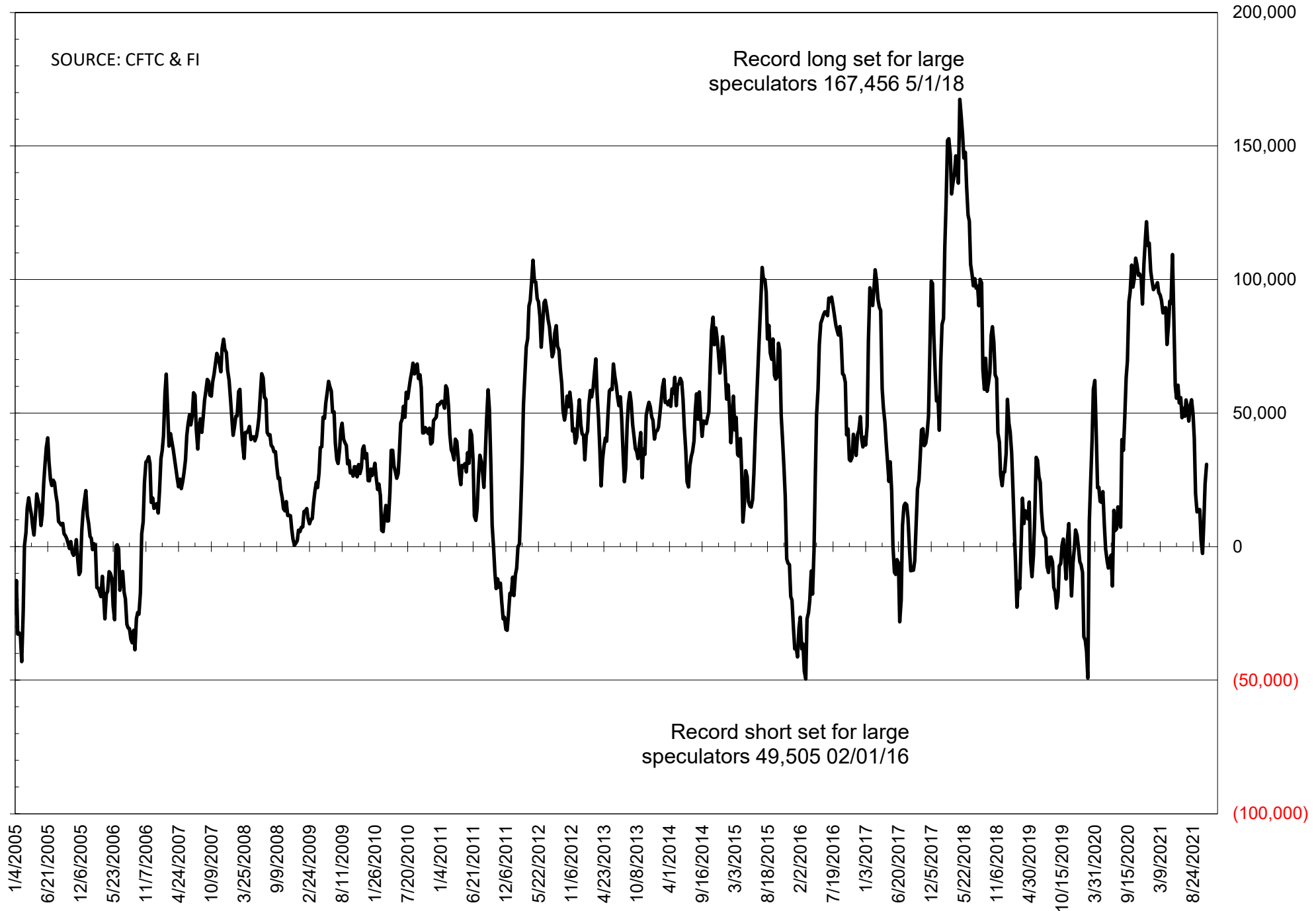
	TOTAL OPEN INTEREST				NEARBY FUTURES PRICE					2-Nov-21 LAST REPORTED % HELD BY TRADERS			
	2-Nov	26-Oct	19-Oct	12-Oct	Z/F Latest	Z/F 2-Nov	X/Z 26-Oct	X/Z 19-Oct	X/Z 12-Oct	LARGE FUND		SMALL	
										LONG	SHORT	LONG	SHORT
WHEAT													
Chicago	409137	405625	394949	385204	766.50	791.50	752.25	736.00	734.00	0%	22%	0%	11%
Kansas City	235472	236941	235946	234627	778.75	798.25	777.25	748.25	738.75	0%	18%	0%	9%
Minneapolis	76945	75079	76183	76406	1009.50	1075.50	1021.25	974.25	955.00	0%	2%	0%	14%
CORN	1506602	1438930	1404126	1400377	553.00	573.00	543.50	530.25	522.50	0%	7%	0%	13%
OATS	5301	5410	5210	5228	749.00	760.25	706.50	656.00	648.00	0%	4%	0%	47%
SOYBEANS	620172	658960	750939	759101	1205.50	1256.25	1238.00	1228.00	1198.25	22%	12%	7%	13%
SOY OIL	426455	418373	416033	401384	58.78	61.99	62.31	62.39	53.20	0%	7%	0%	5%
SOY MEAL	447015	441233	441345	423431	331.70	337.20	326.90	322.60	313.00	0%	15%	0%	7%

SOURCE: CFTC & FI

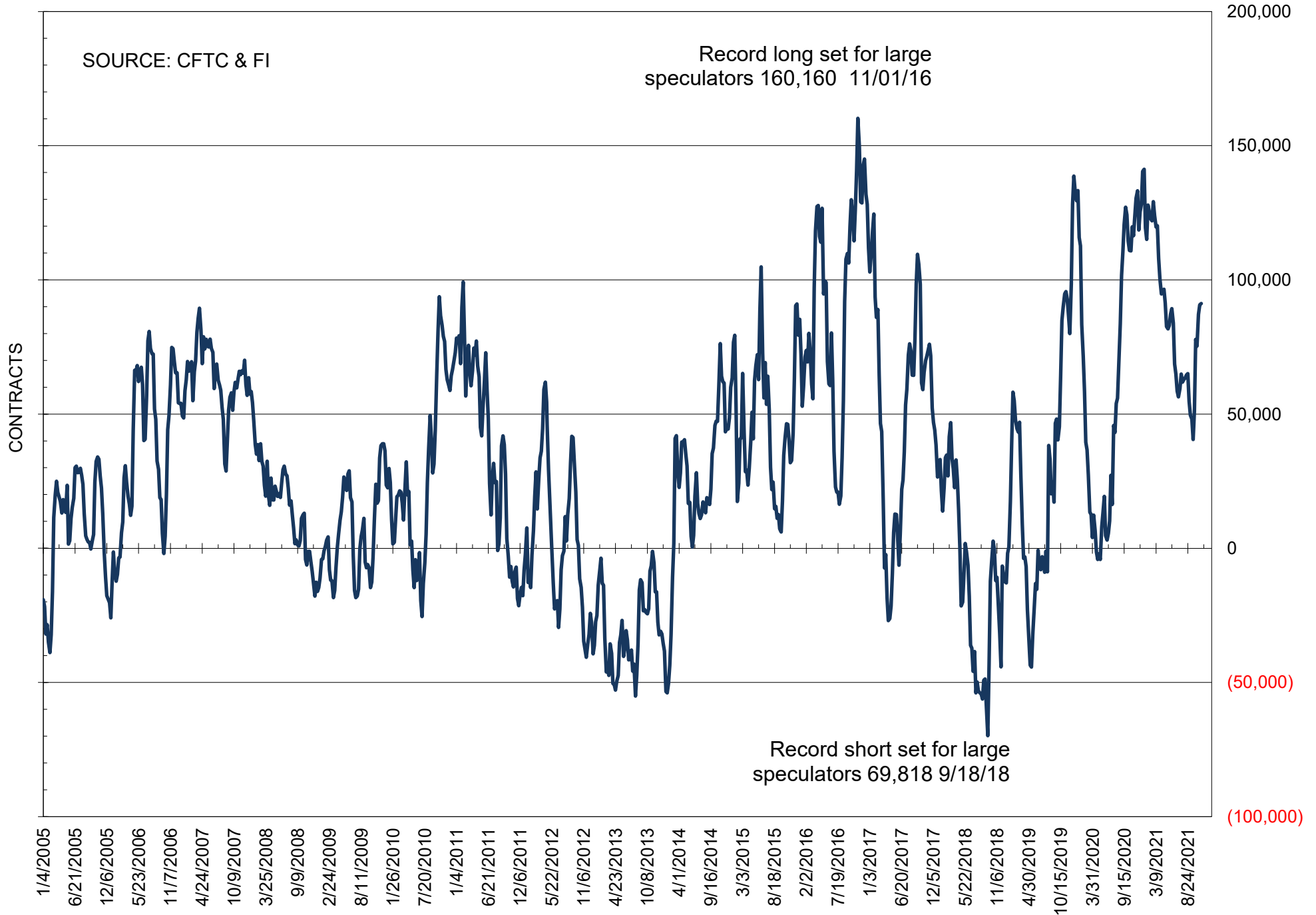
NET POSITION OF FUTURES ONLY LARGE SPECS IN SOYBEANS



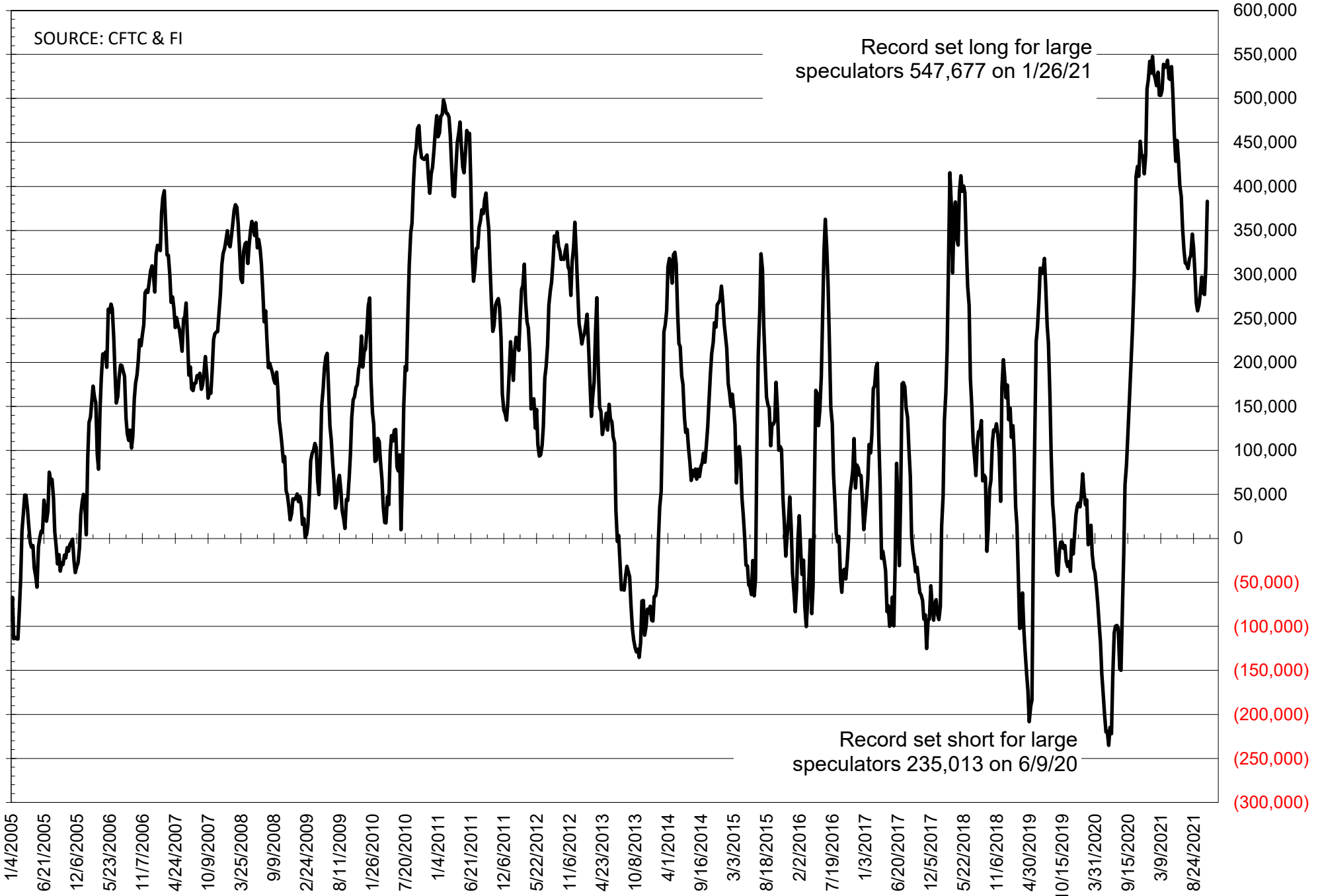
NET POSITION OF FUTURES ONLY LARGE SPECS IN SOYMEAL



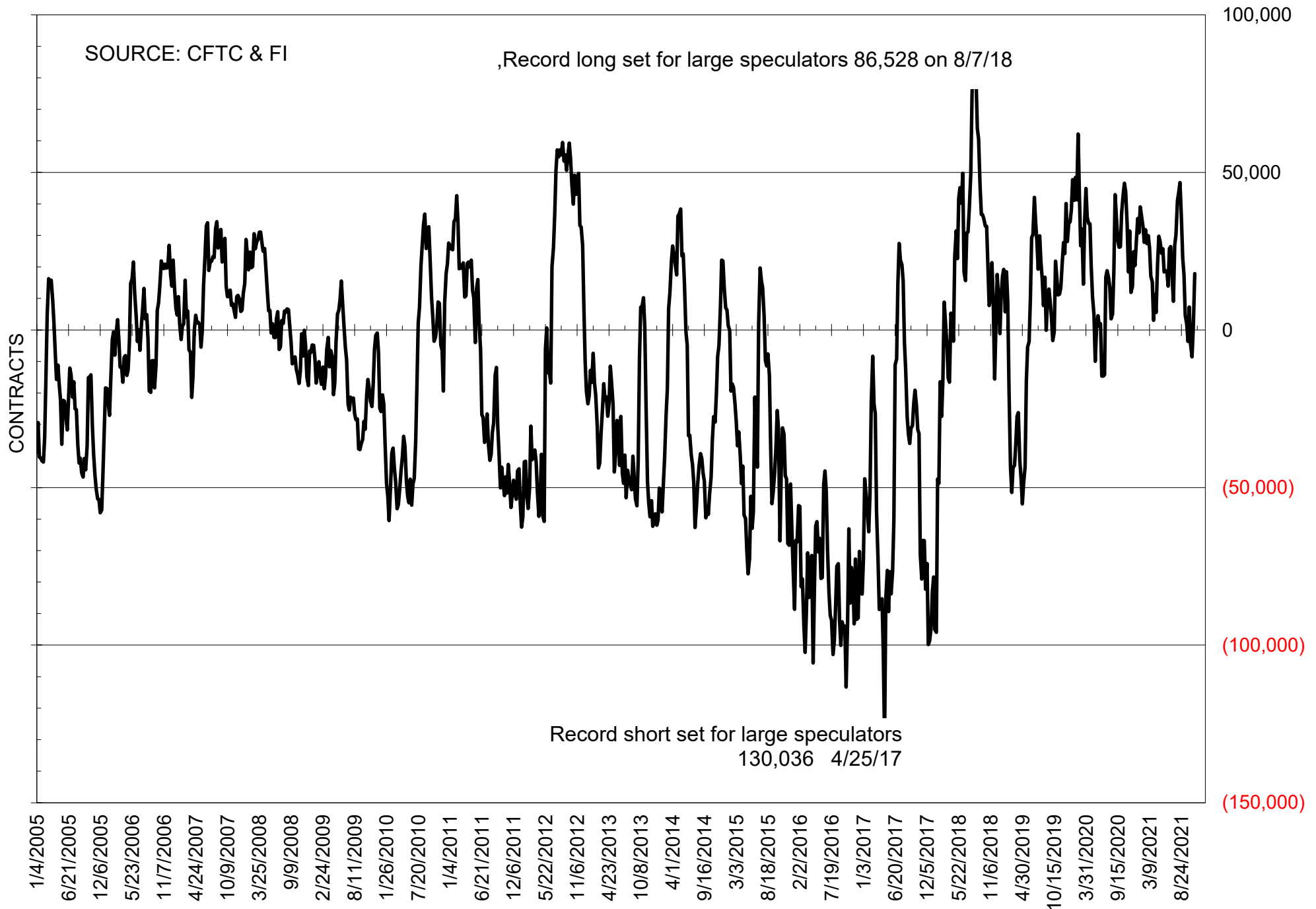
NET POSITION OF FUTURES ONLY LARGE SPECS IN SOYOIL



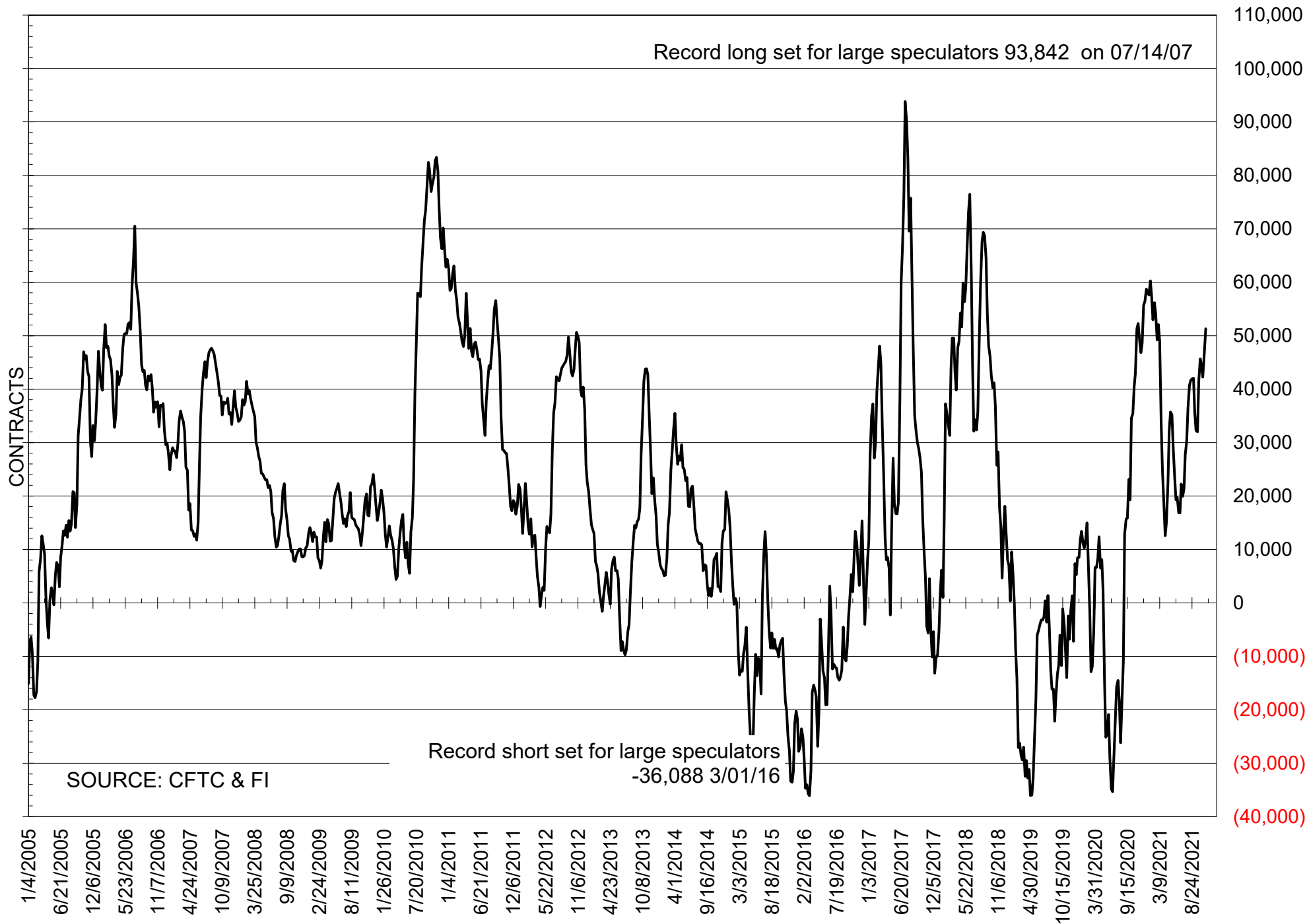
NET POSITION OF LARGE SPECULATORS IN CORN



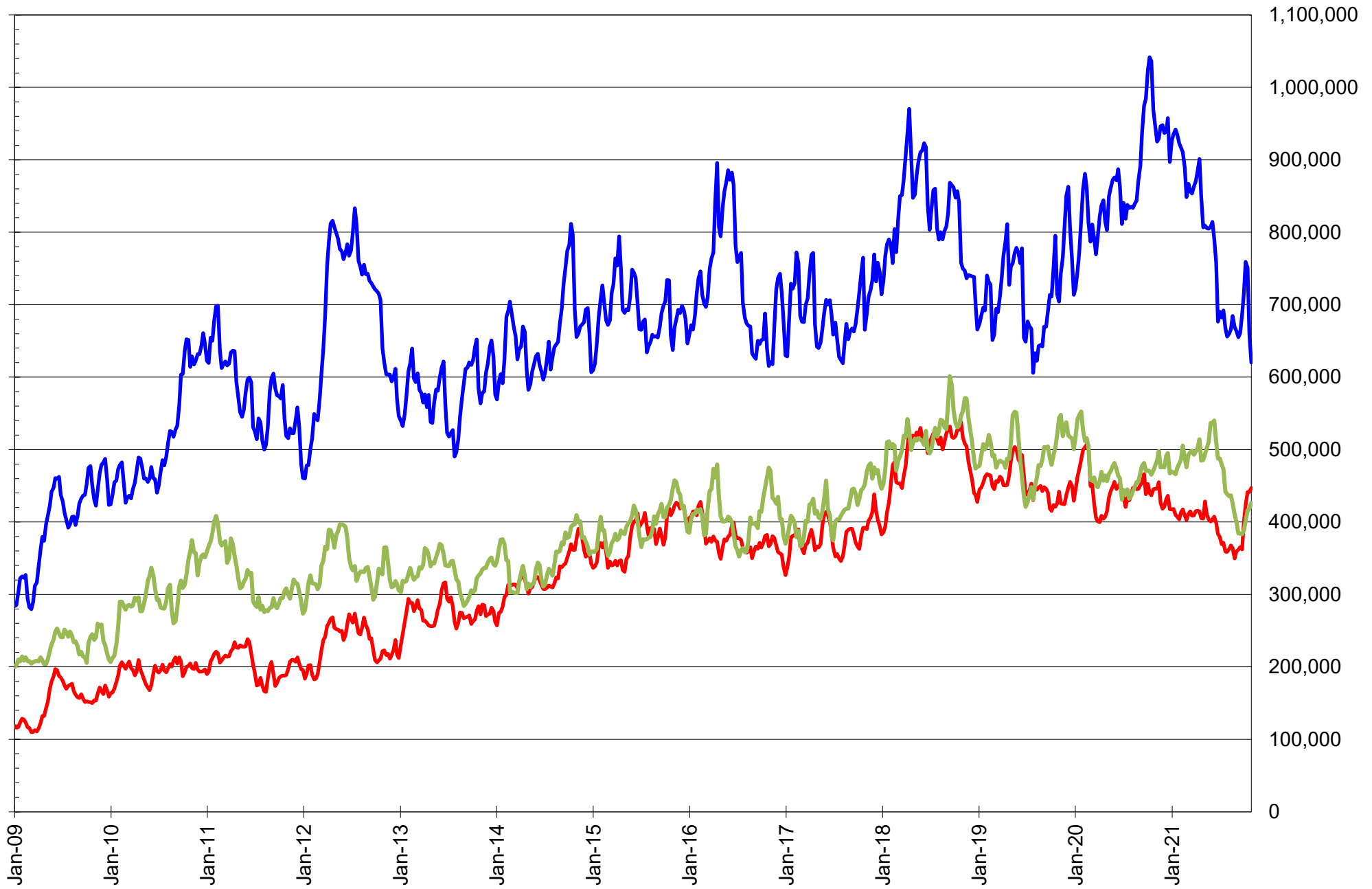
NET POSITION OF FUTURES ONLY LARGE SPECS IN CHICAGO WHEAT



NET POSITION OF LARGE SPECULATORS IN KANSAS CITY WHEAT



TOTAL OPEN INTEREST IN SOYBEANS, MEAL AND OIL, FUTURES ONLY



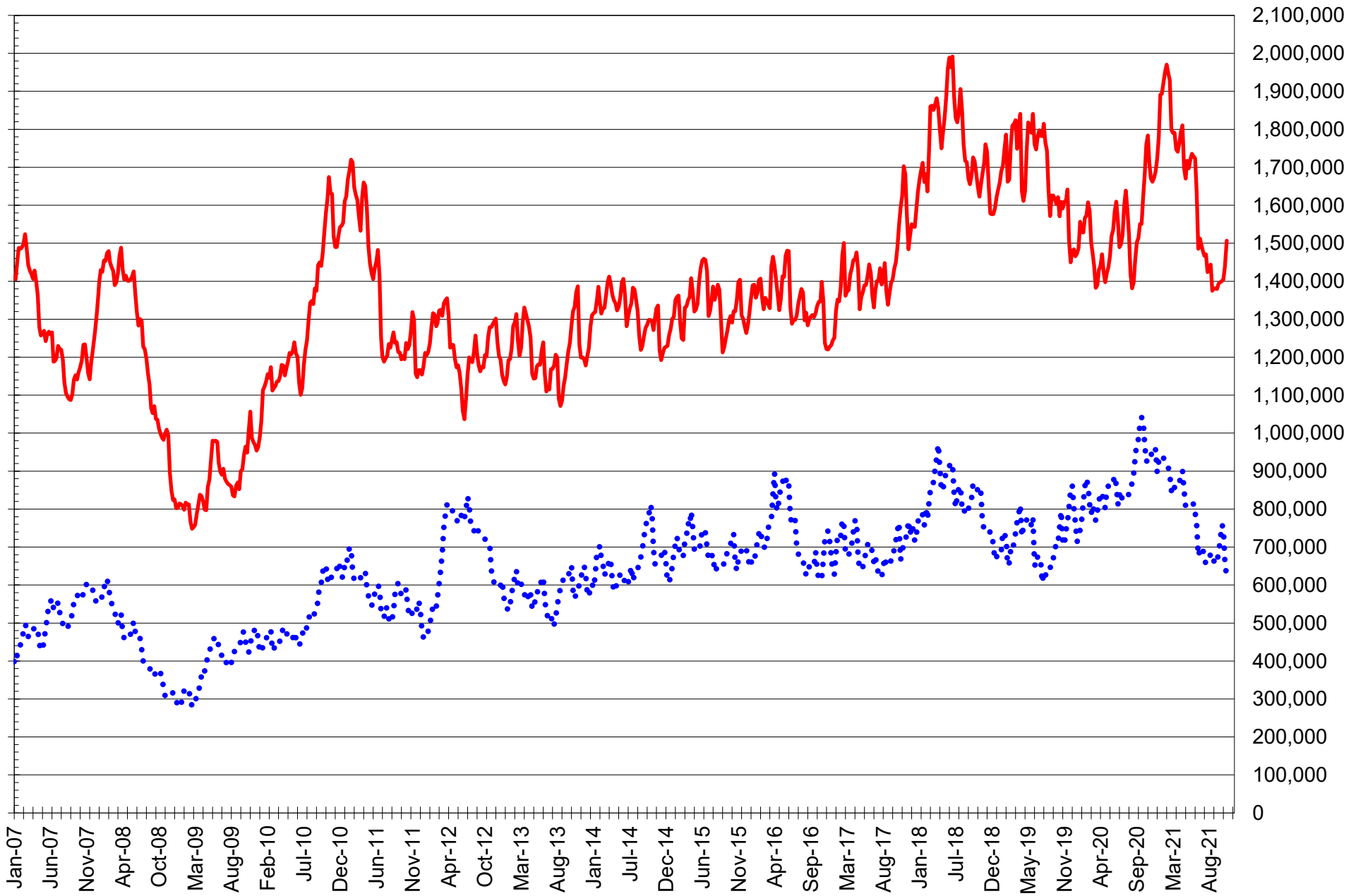
SOURCE: CFTC & FI

— SOYBEANS

— SOYBEAN MEAL

— SOYBEAN OIL

TOTAL OPEN INTEREST IN CORN AND SOYBEANS, FUTURES ONLY



SOURCE: CFTC & FI

— CORN

..... SOYBEANS

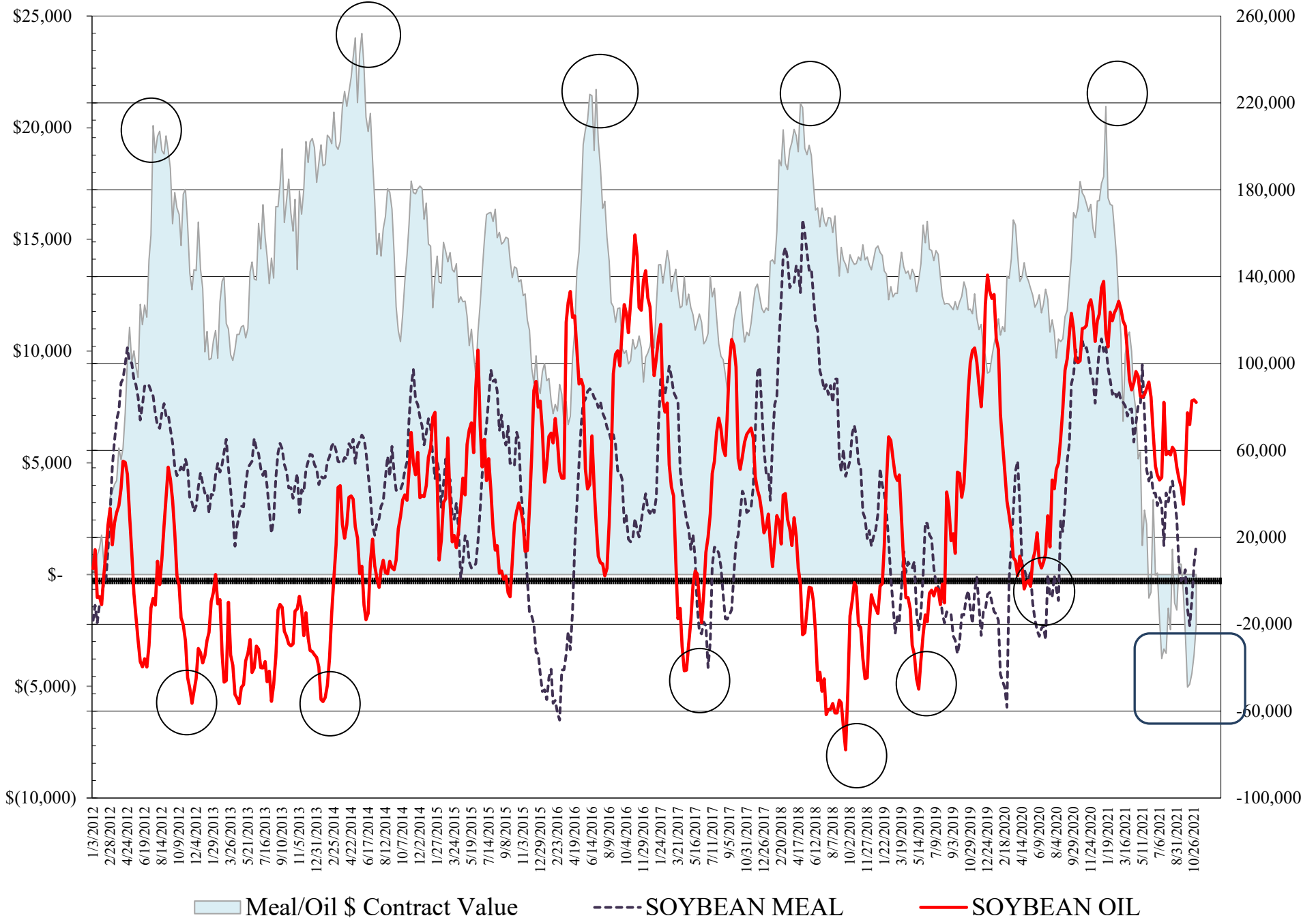
**COMMITMENT OF TRADERS
FUTURES & OPTIONS NET POSITIONS
AS OF 11/02/2021
(IN THOUSAND CONTRACTS)**

	COMMERCIAL				(FUND) NON COMMERCIAL				(SPEC) NON-REPORTABLE			
	2-Nov	26-Oct	19-Oct	12-Oct	2-Nov	26-Oct	19-Oct	12-Oct	2-Nov	26-Oct	19-Oct	12-Oct
WHEAT												
Chicago	-3.2	14.9	27.1	19.0	9.4	-6.0	-18.1	-11.3	-6.2	-8.9	-9.0	-7.7
Kansas City	-52.2	-47.4	-41.8	-43.2	51.3	45.8	40.6	42.3	1.0	1.6	1.2	0.9
Minneapolis	-33.4	-32.8	-30.2	-29.1	28.0	26.5	24.5	23.5	5.5	6.3	5.6	5.6
All Wheat	-88.9	-65.3	-44.9	-53.2	88.7	66.3	47.1	54.4	0.2	-1.0	-2.2	-1.2
CORN	-338.8	-266.9	-228.2	-230.3	394.8	317.9	286.0	290.3	-56.0	-51.0	-57.8	-59.9
OATS	-0.9	-0.9	-0.8	-1.0	0.7	0.6	0.6	0.7	0.3	0.2	0.1	0.3
SOYBEANS	-25.2	-14.2	1.6	1.5	66.4	49.5	36.5	39.2	-41.1	-35.3	-38.1	-40.6
SOY OIL	-95.5	-95.3	-93.8	-82.1	82.1	83.2	82.9	71.9	13.4	12.0	11.0	10.2
SOY MEAL	-44.4	-36.9	-17.4	-3.2	16.3	7.8	-9.1	-20.6	28.1	29.1	26.6	23.8

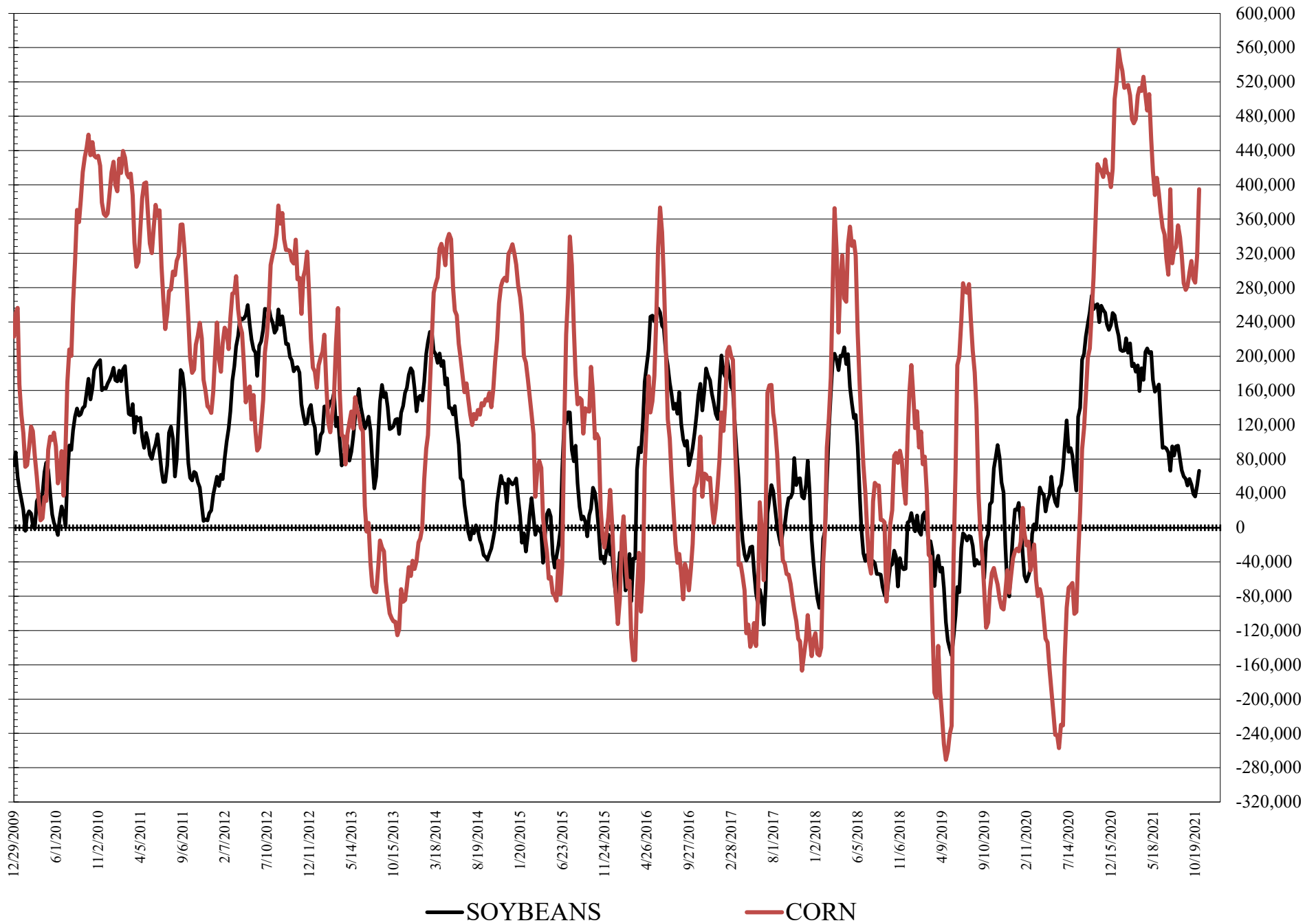
	TOTAL OPEN INTEREST				COMMERCIALS		% HELD BY TRADERS LARGE (FUNDS)		SMALL (NON-REP)	
	2-Nov	26-Oct	19-Oct	12-Oct	LONG	SHORT	LONG	SHORT	LONG	SHORT
WHEAT										
Chicago	527,595	495,860	487,060	470,730	35%	36%	18%	17%	8%	9%
Kansas City	265,646	264,135	262,312	260,494	31%	51%	35%	16%	9%	9%
Minneapolis	85,645	82,403	82,149	81,687	34%	73%	35%	2%	21%	14%
CORN	1,988,278	1,880,818	1,830,900	1,830,438	40%	57%	23%	3%	9%	12%
OATS	6,022	6,014	5,692	5,696						
SOYBEANS	728,618	762,618	963,784	978,147	53%	56%	18%	9%	7%	13%
SOY OIL	488,744	478,248	481,777	460,957	46%	66%	23%	6%	7%	5%
SOY MEAL	492,363	484,541	490,823	470,906	46%	55%	16%	13%	12%	7%

SOURCE: CFTC & FI

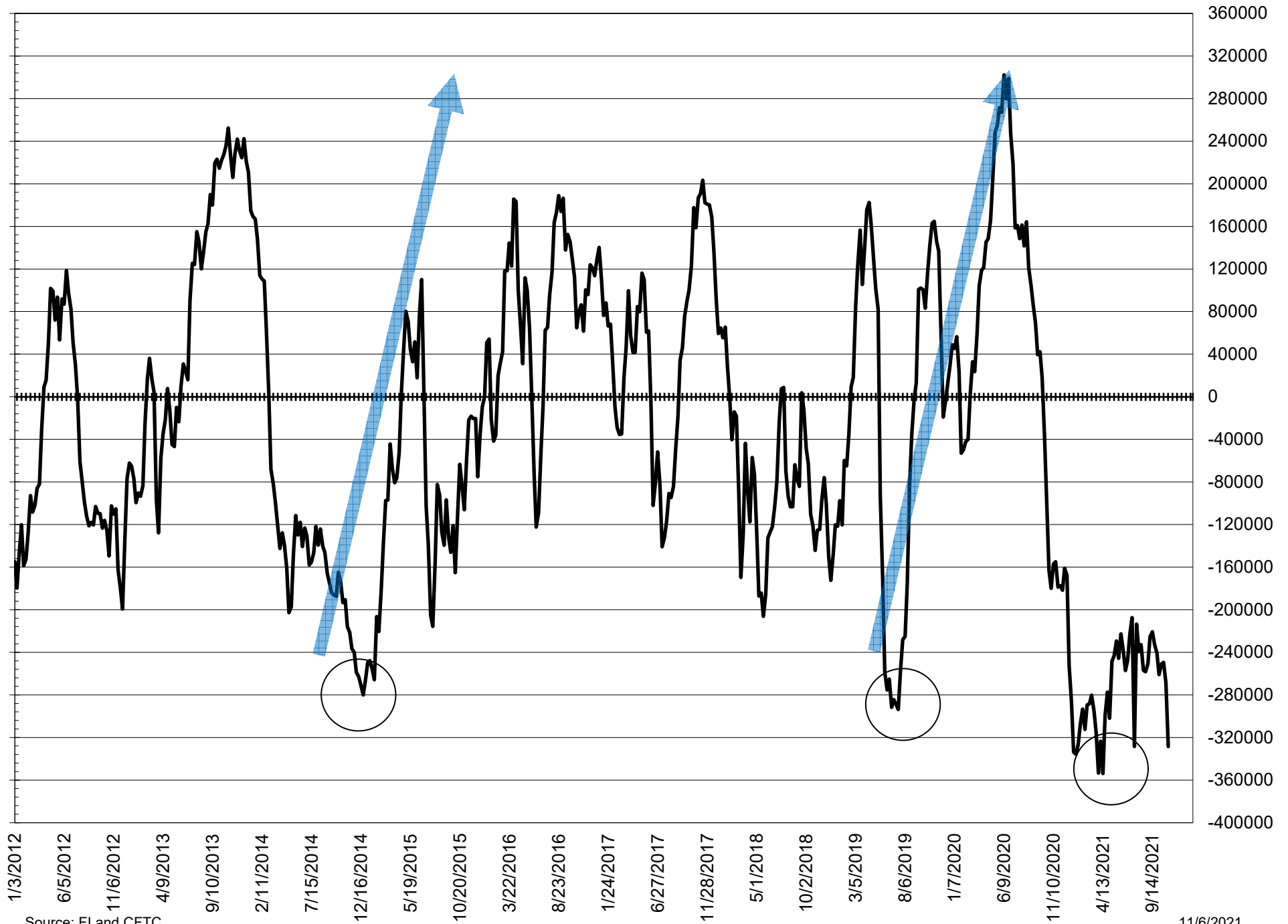
NET POSITION FUTURES AND OPTIONS OF LARGE SPECULATORS IN SOYBEAN MEAL AND SOYBEAN OIL



NET POSITION FUTURES AND OPTIONS OF LARGE SPECULATORS IN SOYBEANS AND CORN



NET POSITION FUTURES AND OPTIONS SPREAD OF LARGE SPECULATORS IN SOYBEANS MINUS CORN



Source: FI and CFTC

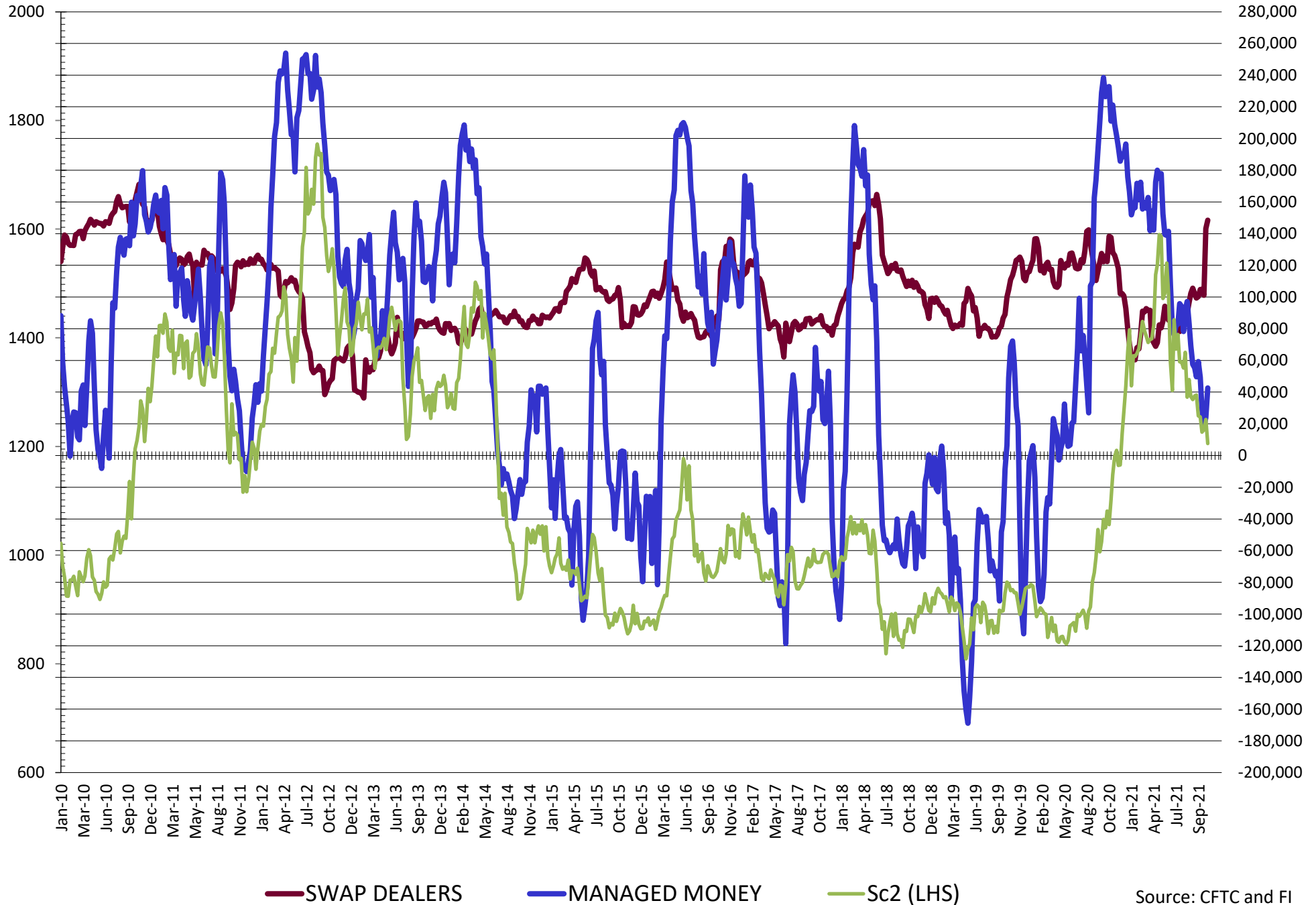
11/6/2021

**DISAGGREGATED COMMITMENT OF TRADERS
FUTURES & OPTIONS NET POSITIONS
AS OF 11/02/2021
(IN THOUSAND CONTRACTS)**

	PRODUCER / MERCHANT / PROCESSOR / USER				(INDEX/ETF) SWAP DEALERS				(CTA/CPO/OTHER UNREGISTERED) MANAGED MONEY			
	2-Nov	26-Oct	19-Oct	12-Oct	2-Nov	26-Oct	19-Oct	12-Oct	2-Nov	26-Oct	19-Oct	12-Oct
	WHEAT											
Chicago	(70.6)	(64.1)	(55.8)	(65.2)	67.4	79.1	82.8	84.3	5.9	(8.6)	(17.7)	(8.5)
Kansas City	(85.8)	(79.0)	(74.0)	(75.7)	33.6	31.6	32.1	32.5	57.3	53.0	47.4	48.3
Minneapolis	(35.4)	(34.4)	(31.8)	(30.6)	1.9	1.6	1.7	1.6	17.4	16.5	16.3	15.9
All Wheat	(191.8)	(177.5)	(161.5)	(171.5)	102.9	112.2	116.6	118.3	80.6	60.9	46.0	55.6
CORN	(559.8)	(491.8)	(452.7)	(455.6)	221.0	225.0	224.5	225.2	324.6	244.8	219.6	227.9
OATS	(1.0)	(0.9)	(0.9)	(1.1)	0.1	0.1	0.1	0.1	0.4	0.3	0.3	0.4
SOYBEANS	(173.7)	(157.4)	(99.5)	(103.4)	148.4	143.2	101.1	104.9	42.7	23.9	18.2	29.1
SOY OIL	(193.1)	(195.7)	(194.5)	(183.4)	97.6	100.4	100.7	101.3	88.7	85.6	82.2	73.0
SOY MEAL	(131.9)	(123.0)	(103.8)	(90.0)	87.4	86.1	86.3	86.8	(6.3)	(15.1)	(32.2)	(40.3)
	TOTAL				OTHER REPORTABLE				NON REPORTABLE			
	OPEN INTEREST				SWAP DEALERS				MANAGED MONEY			
	2-Nov	26-Oct	19-Oct	12-Oct	2-Nov	26-Oct	19-Oct	12-Oct	2-Nov	26-Oct	19-Oct	12-Oct
WHEAT												
Chicago	527,595	495,860	487,060	470,730	3.5	2.6	(0.3)	(2.8)	(6.2)	(8.9)	(9.0)	(7.7)
Kansas City	265,646	264,135	262,312	260,494	(6.0)	(7.2)	(6.7)	(6.0)	1.0	1.6	1.2	0.9
Minneapolis	85,645	82,403	82,149	81,687	10.6	9.9	8.2	7.6	5.5	6.3	5.6	5.6
All Wheat	878,886	842,398	831,521	812,911	8.1	5.4	1.1	(1.2)	0.2	(1.0)	(2.2)	(1.2)
CORN	1,988,278	1,880,818	1,830,900	1,830,438	70.3	73.1	66.4	62.3	(56.0)	(51.0)	(51.0)	(51.0)
OATS	6,022	6,014	5,692	5,696	0.3	0.3	0.3	0.3	0.3	0.2	0.1	0.3
SOYBEANS	728,618	762,618	963,784	978,147	23.7	25.6	18.3	10.1	(41.1)	(35.3)	(38.1)	(40.6)
SOY OIL	488,744	478,248	481,777	460,957	(6.6)	(2.4)	0.7	(1.1)	13.4	12.0	11.0	10.2
SOY MEAL	492,363	484,541	490,823	470,906	22.6	23.0	23.0	19.7	28.1	29.1	26.6	23.8

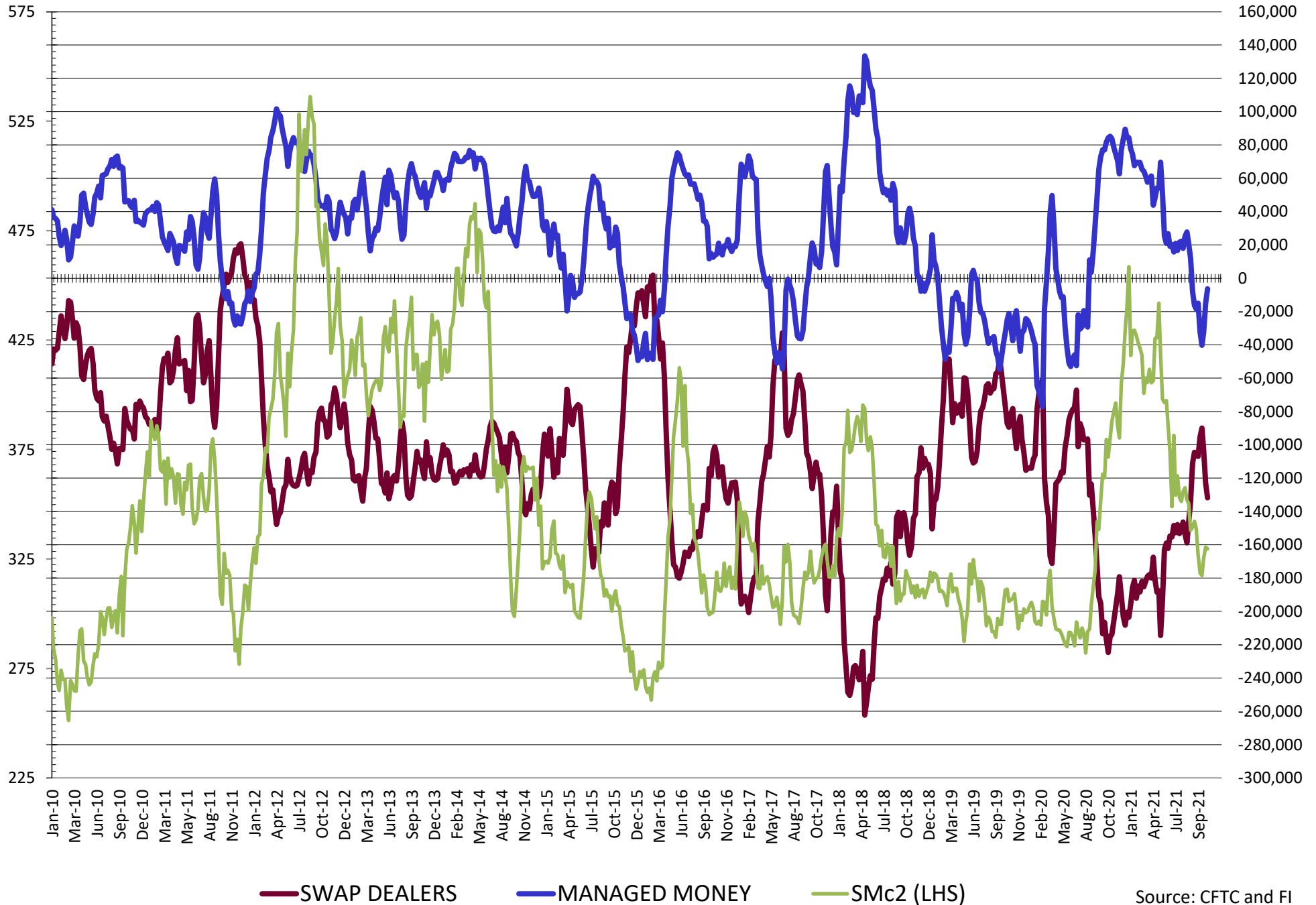
SOURCE: CFTC & FI

NET POSITION FUTURES AND OPTIONS OF SWAP AND MANAGED FUNDS IN SOYBEANS

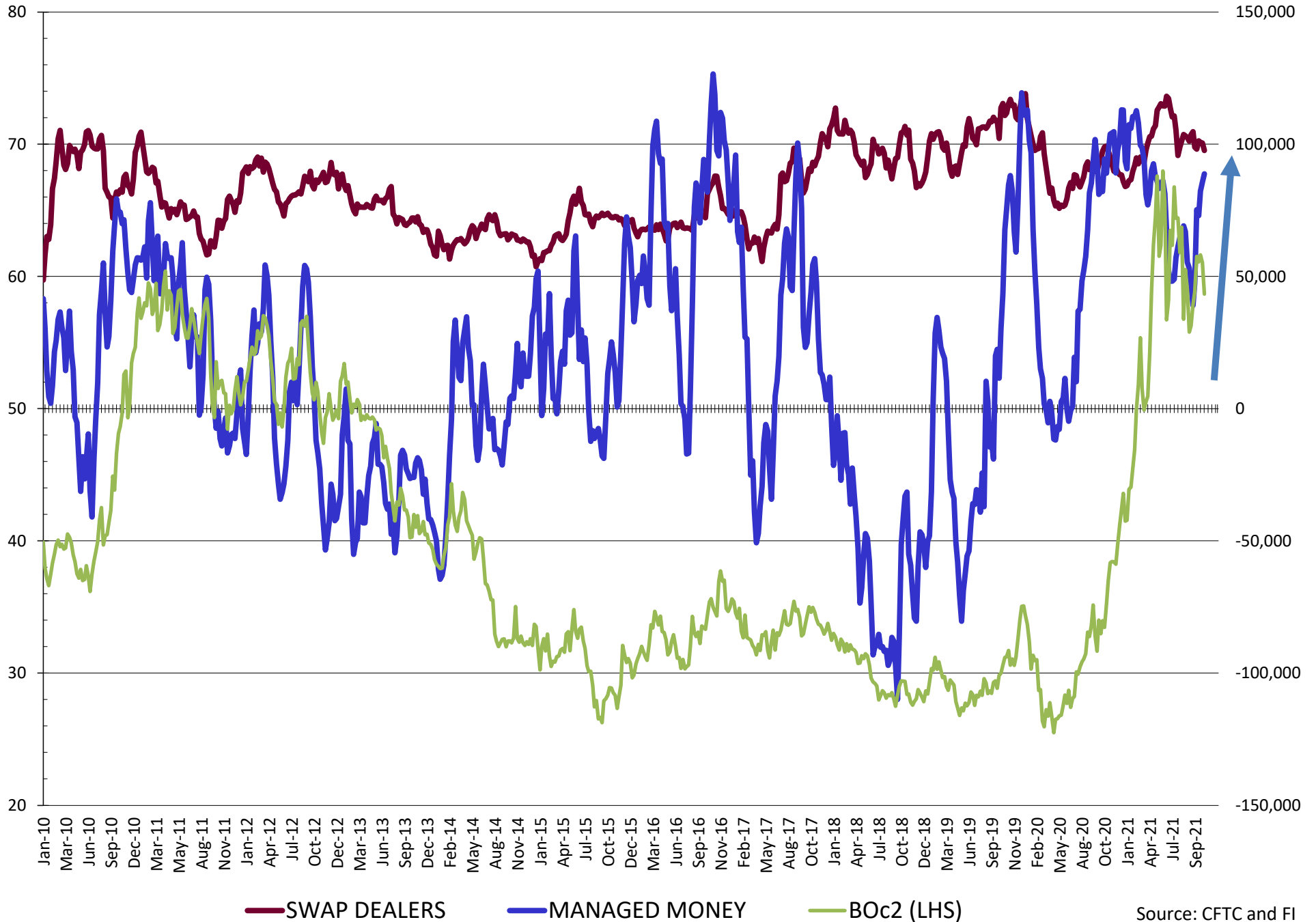


Source: CFTC and FI
11/6/2021

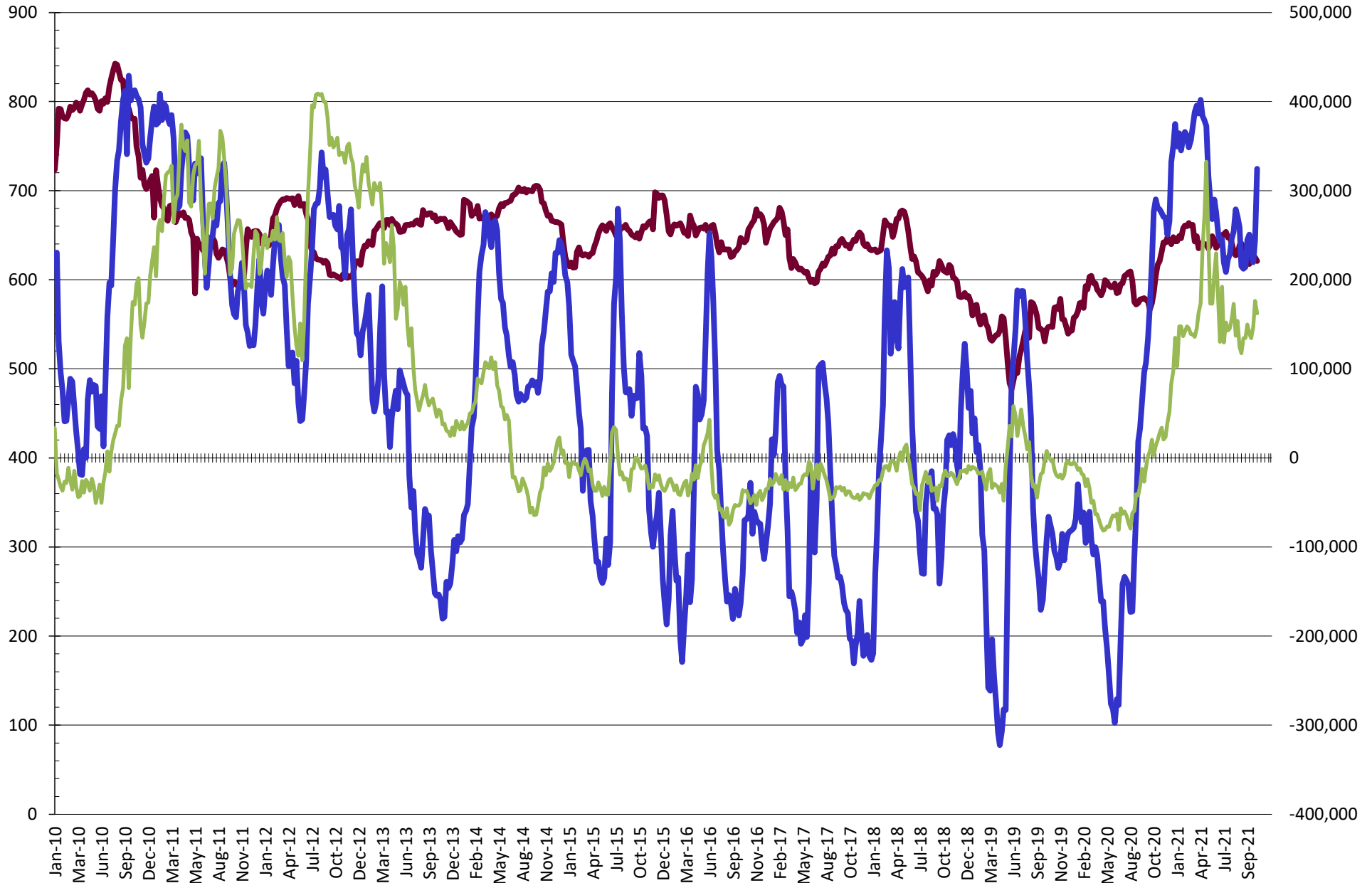
NET POSITION FUTURES AND OPTIONS OF SWAP AND MANAGED FUNDS IN SOYBEAN MEAL



NET POSITION FUTURES AND OPTIONS OF SWAP AND MANAGED FUNDS IN SOYBEAN OIL

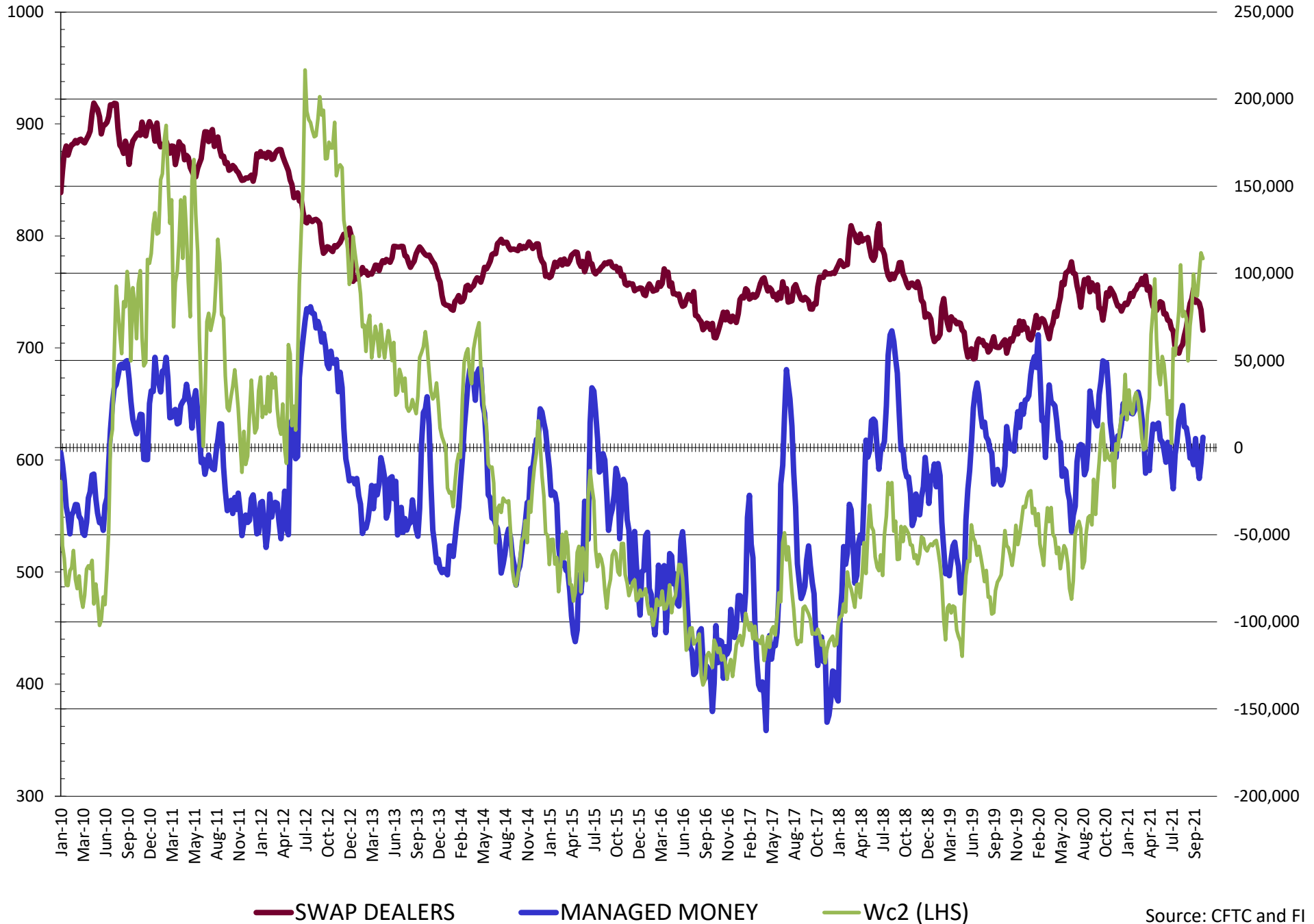


NET POSITION FUTURES AND OPTIONS OF SWAP AND MANAGED FUNDS IN CORN

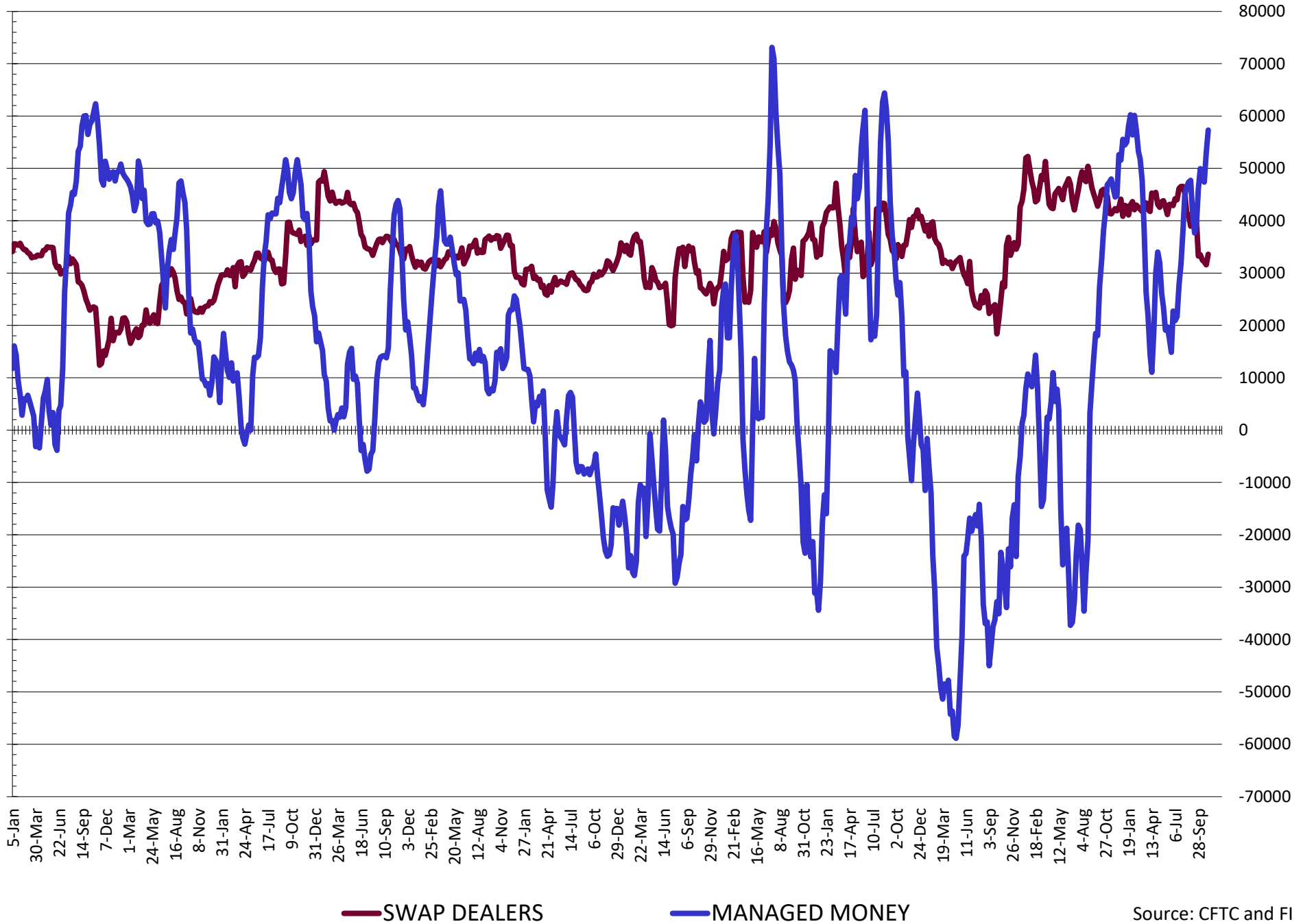


— SWAP DEALERS
 — MANAGED MONEY
 — Cc2 (LHS)

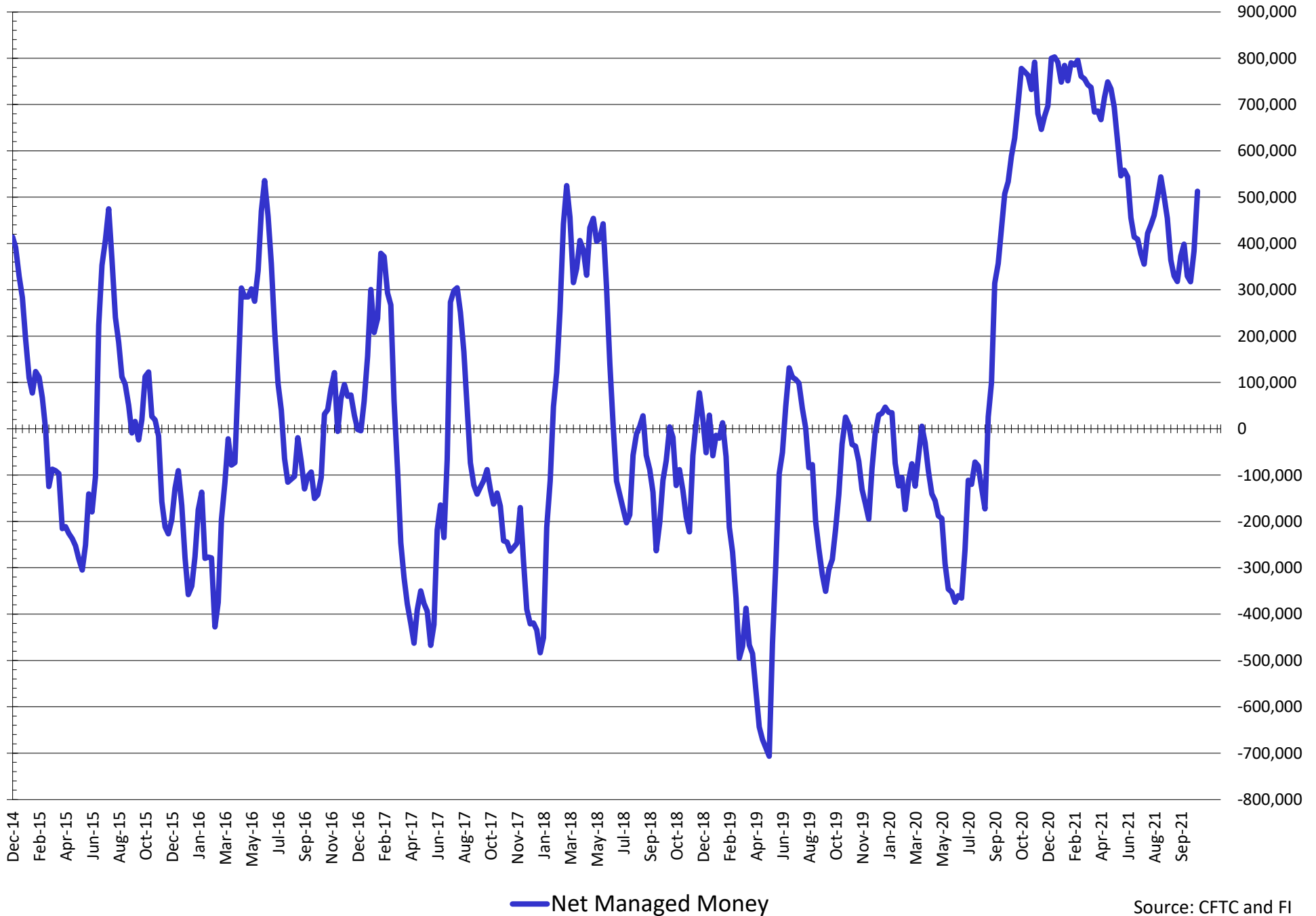
NET POSITION FUTURES AND OPTIONS OF SWAP AND MANAGED FUNDS IN CHICAGO WHEAT



NET POSITION FUTURES AND OPTIONS OF SWAP AND MANAGED FUNDS IN KANSAS WHEAT



NET POSITION FUTURES AND OPTIONS OF SWAP AND MANAGED FUNDS IN COMBINED SRW, HRW, CORN, SOYBEANS, SOYMEAL AND SOYOIL



Source: CFTC and FI
11/6/2021

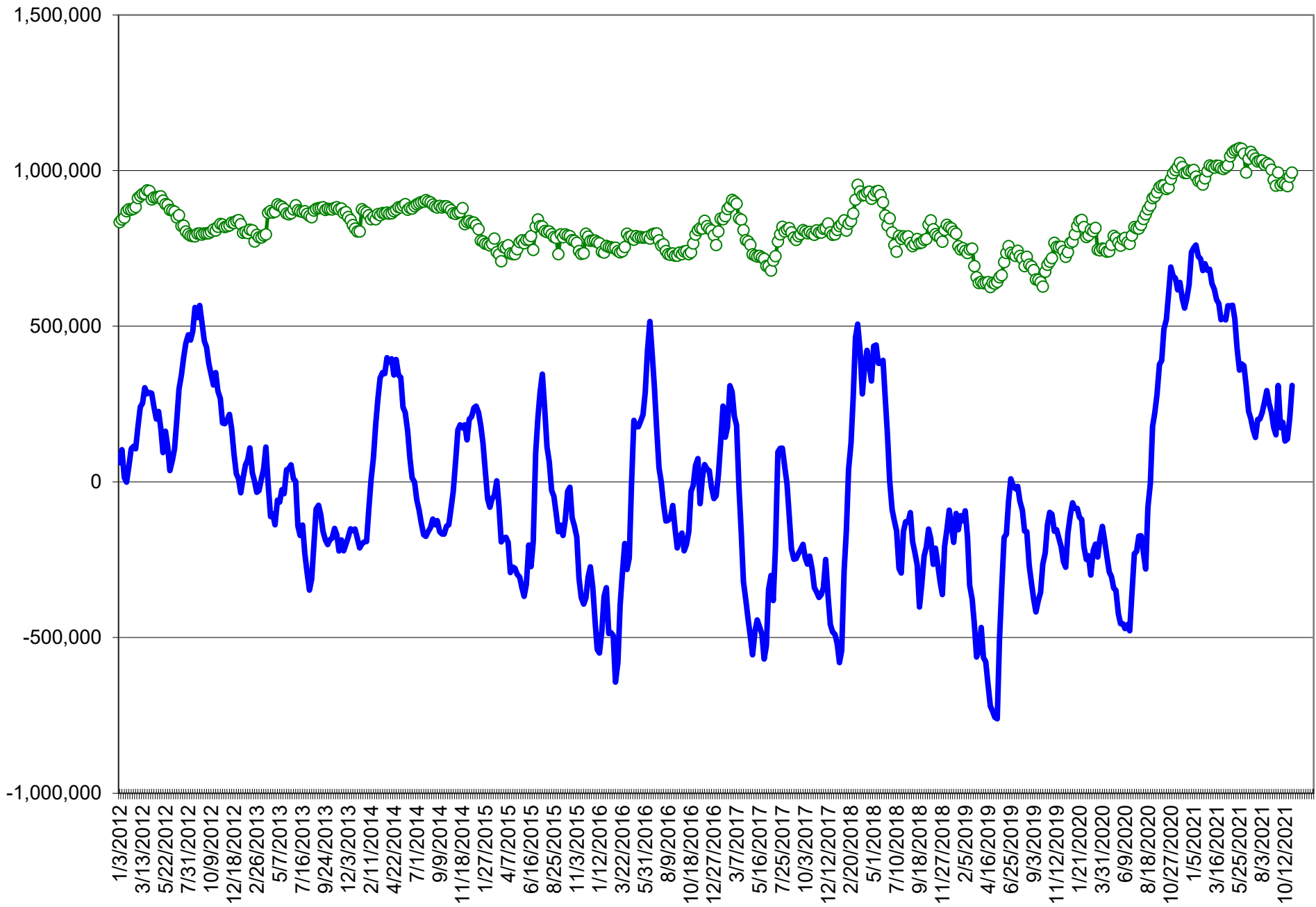
COMMITMENT OF TRADERS
FUTURES & OPTIONS NET POSITIONS (INDEX BROKEN OUT)
AS OF 11/02/2021
(IN THOUSAND CONTRACTS)

	COMMERCIAL				(FUND) NON COMMERCIAL				(SPEC) NON-REPORTABLE			
	2-Nov	26-Oct	19-Oct	12-Oct	2-Nov	26-Oct	19-Oct	12-Oct	2-Nov	26-Oct	19-Oct	12-Oct
	WHEAT											
Chicago	(96.2)	(84.4)	(74.4)	(83.8)	(13.1)	(29.2)	(41.9)	(36.4)	(6.2)	(8.9)	(9.0)	(7.7)
Kansas City	(92.1)	(87.5)	(81.7)	(83.4)	30.4	26.9	23.0	25.2	1.0	1.6	1.2	0.9
Minneapolis	-	-	-	-	-	-	-	-	-	-	-	-
All Wheat	(188.3)	(171.8)	(156.1)	(167.2)	17.2	(2.3)	(18.9)	(11.2)	(5.2)	(7.3)	(7.8)	(6.8)
CORN	(584.8)	(514.1)	(474.4)	(476.5)	245.8	174.7	148.5	148.9	(56.0)	(51.0)	(57.8)	(59.9)
OATS	-	-	-	-	-	-	-	-	-	-	-	-
SOYBEANS	(168.2)	(154.6)	(123.6)	(127.6)	10.5	(3.0)	(14.9)	(12.3)	(41.1)	(35.3)	(38.1)	(40.6)
SOY OIL	(185.3)	(185.2)	(183.7)	(172.4)	47.0	49.3	52.8	44.2	13.4	12.0	11.0	10.2
SOY MEAL	(115.0)	(104.6)	(83.4)	(69.5)	(11.3)	(15.7)	(29.9)	(38.6)	28.1	29.1	26.6	23.8

	TOTAL OPEN INTEREST				(INDEX) COMMERCIAL INDEX TRADERS				(INDEX) % NET OF TOTAL OPEN INTEREST			
	2-Nov	26-Oct	19-Oct	12-Oct	2-Nov	26-Oct	19-Oct	12-Oct	2-Nov	26-Oct	19-Oct	12-Oct
	WHEAT											
Chicago	527,595	495,860	487,060	470,730	115.6	122.6	125.4	127.8	21.9%	24.7%	25.7%	27.2%
Kansas City	265,646	264,135	262,312	260,494	60.8	58.9	57.5	57.3	22.9%	22.3%	21.9%	22.0%
Minneapolis	-	-	-	-	-	-	-	-	-	-	-	-
All Wheat	793,241	759,995	749,372	731,224	176.3	181.5	182.9	185.1	22.2%	23.9%	24.4%	25.3%
CORN	1,988,278	1,880,818	1,830,900	1,830,438	395.0	390.4	383.7	387.6	19.9%	20.8%	21.0%	21.2%
OATS	-	-	-	-	-	-	-	-	-	-	-	-
SOYBEANS	728,618	762,618	963,784	978,147	198.9	192.9	176.7	180.5	27.3%	25.3%	18.3%	18.5%
SOY OIL	488,744	478,248	481,777	460,957	124.9	123.8	119.9	118.0	25.6%	25.9%	24.9%	25.6%
SOY MEAL	492,363	484,541	490,823	470,906	98.2	91.3	86.7	84.4	19.9%	18.8%	17.7%	17.9%

SOURCE: CFTC & FI

NET POSITION FUTURES AND OPTIONS OF SPECULATORS AND INDEX FUNDS IN COMBINED SRW, HRW, CORN, SOYBEANS, SOYMEAL AND SOYOIL



Source: CFTC and FI

○ Net Index

— Net Speculator

Traditional Daily Estimate of Funds 11/2/21

	(Neg)-"Short"		Pos-"Long"		
Actual less Est.	38.3	7.6	(4.9)	(1.6)	(1.6)
	Corn	Bean	Chi. Wheat	Meal	Oil
Actual	344.8	51.2	22.8	32.4	92.7
3-Nov	(10.0)	(9.0)	(9.0)	2.0	(5.0)
4-Nov	(5.0)	(16.0)	(5.0)	(5.0)	(6.0)
5-Nov	(8.0)	(11.0)	(5.0)	(3.0)	(4.0)
8-Nov					
9-Nov					
FI Est. of Futures Only 11/2/21	321.8	15.2	3.8	26.4	77.7
FI Est. Futures & Options	333.5	22.8	(4.7)	11.9	68.7
Futures only record long "Traditional Funds"	547.7 1/26/2021	280.9 11/10/2020	86.5 8/7/2018	167.5 5/1/2018	160.2 11/1/2016
Futures only record short	(235.0) 6/9/2020	(118.3) 4/30/2019	(130.0) 4/25/2017	(49.5) 3/1/2016	(69.8) 9/18/2018
Futures and options record net long	557.6 1/12/2021	270.9 10/6/2020	64.8 8/7/2012	132.1 5/1/2018	159.2 1/1/2016
Futures and options record net short	(270.6) 4/26/2019	(132.0) 4/30/2019	(143.3) 4/25/2017	(64.1) 3/1/2016	(77.8) 9/18/2018

Managed Money Daily Estimate of Funds 11/2/21

	Corn	Bean	Chi. Wheat	Meal	Oil
Latest CFTC Fut. Only	318.8	43.0	4.6	(6.4)	88.2
Latest CFTC F&O	324.6	42.7	5.9	(6.3)	88.7
FI Est. Managed Fut. Only	296	7	(14)	(12)	73
FI Est. Managed Money F&O	302	7	(13)	(12)	74

Index Funds Latest Positions (as of last Tuesday)

Index Futures & Options	395.0	198.9	115.6	NA	124.9
Change From Previous Week	4.6	6.0	(7.0)	NA	1.1

Source: Reuters, CFTC & FI (FI est. are noted with latest date)

Disclaimer

TO CLIENTS/PROSPECTS OF FUTURES INTERNATIONAL, SEE RISK DISCLOSURE BELOW:

THIS COMMUNICATION IS CONVEYED AS A SOLICITATION FOR ENTERING INTO A DERIVATIVES TRANSACTION.

Any trading recommendations and market or other information to Customer by Futures International (FI), although based upon information obtained from sources believed by FI to be reliable may not be accurate and may be changed without notice to customer. FI makes no guarantee as to the accuracy or completeness of any of the information or recommendations furnished to Customer. Customer understands that FI, its managers, employees and/or affiliates may have a position in commodity futures, options or other derivatives which may not be consistent with the recommendations furnished by FI to Customer.

The risk of trading futures and options and other derivatives involves a substantial risk of loss and is not suitable for all persons. In purchasing an option, the risk is limited to the premium paid, and all commissions and fees involved with the trade. When an option is shorted or written, the writer of the option has unlimited risk with respect to the option written. The use of options strategies such as a straddles and strangles involve multiple option positions and may substantially increase the amount of commissions and fees paid to execute the strategy. Option prices do not necessarily move in tandem with cash or futures prices. Each person must consider whether a particular trade, combination of trades or strategy is suitable for that person's financial means and objectives.

This material may include discussions of seasonal patterns, however, futures prices have already factored in the seasonal aspects of supply and demand, and seasonal patterns are no indication of future market trends. Finally, past performance is not indicative of future results.

This communication may contain links to third party websites which are not under the control of FI and FI is not responsible for their content. Products and services are offered only in jurisdictions where solicitation and sale are lawful, and in accordance with applicable laws and regulations in each such jurisdiction.