

Page Menu

[Short-term Weather Model Outlooks](#)

[Lower 48 Component Models](#)

[Regional S/D Models Storage Projection](#)

[Weather Model Storage Projection](#)

[Supply – Demand Trends](#)

[Nat Gas Options Volume and Open Interest](#)

[Nat Gas Futures Open Interest](#)

[Price Summary](#)

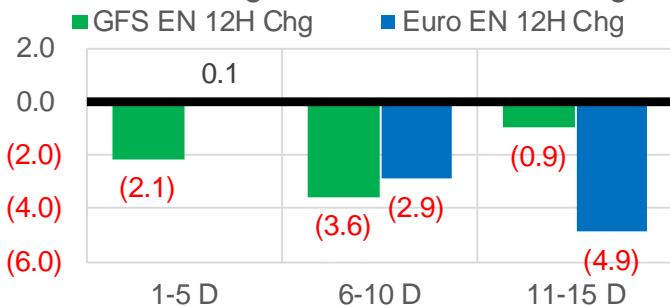
	Current	Δ from YD	Δ from 7D Avg
Nat Gas Prompt	\$ 5.80	▼ \$ (0.09)	▲ \$ 0.50

	Current	Δ from YD	Δ from 7D Avg
WTI Prompt	\$ 84.00	▲ \$ 0.24	▲ \$ 0.5

	Current	Δ from YD	Δ from 7D Avg
Brent Prompt	\$ 86.14	▲ \$ 0.15	▲ \$ 0.7

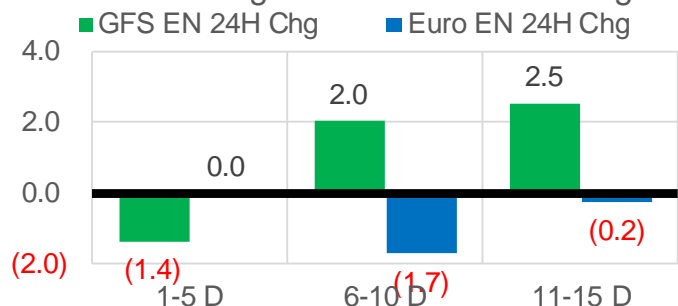
Vs. 12H Ago

L48 Region - 00z TDD vs 12H Ago



Vs. 24H Ago

L48 Region - 00z TDD vs 24H Ago



	Current	Δ from YD	Δ from 7D Avg
US Dry Production	93.0	▼ -0.86	▲ 0.58

	Current	Δ from YD	Δ from 7D Avg
US Power Burns	29.4	▼ -0.30	▲ 0.29

	Current	Δ from YD	Δ from 7D Avg
US ResComm	18.5	▲ 2.93	▲ 3.27

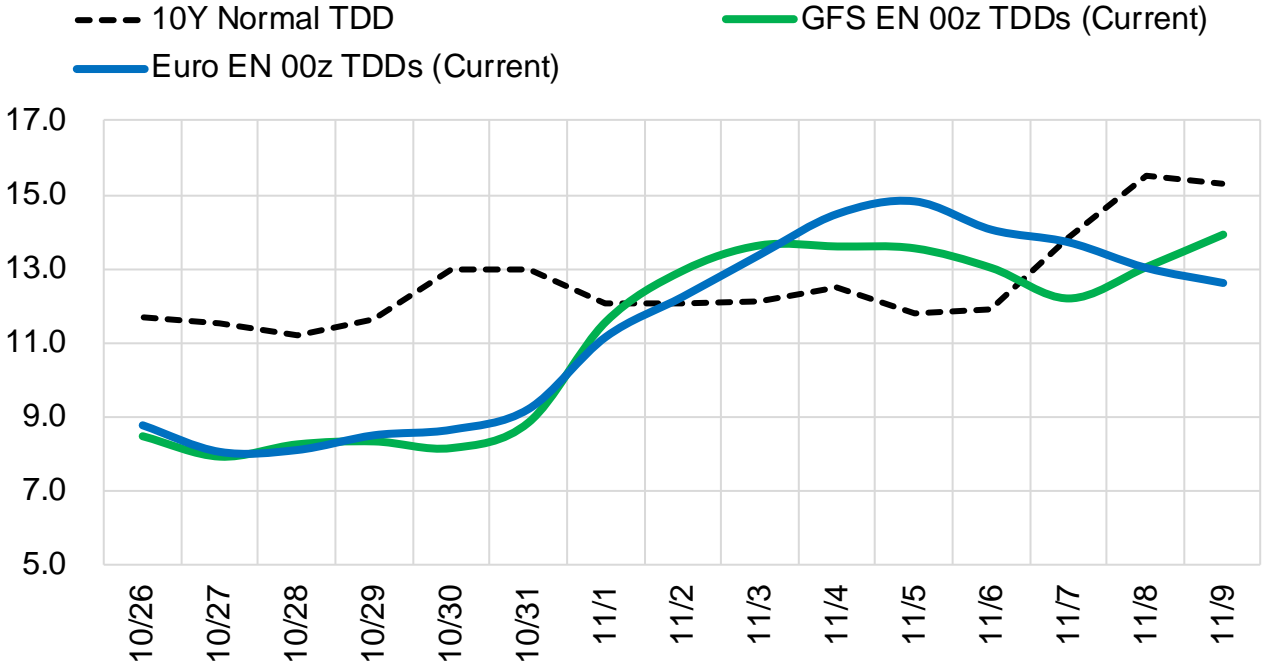
	Current	Δ from YD	Δ from 7D Avg
Canadian Imports	5.3	▼ -0.42	▼ -0.35

	Current	Δ from YD	Δ from 7D Avg
Net LNG Exports	10.7	▼ -0.53	▲ 0.13

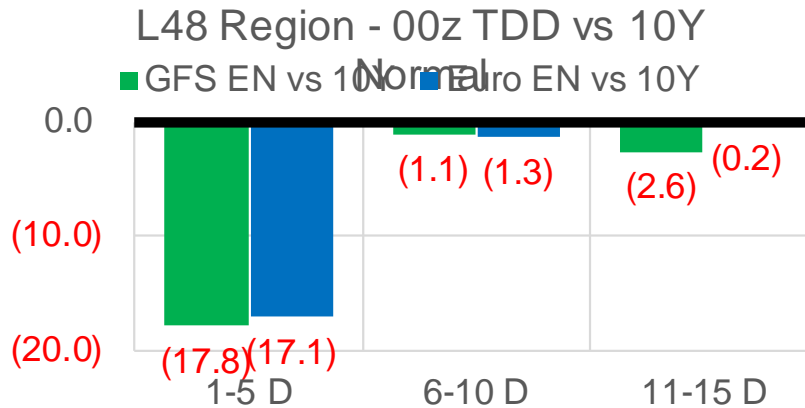
	Current	Δ from YD	Δ from 7D Avg
Mexican Exports	7.1	▲ 0.03	▲ 0.47

Short-term Weather Model Outlooks (00z)

L48 Region



Vs. 10Y Normal



Source: WSI, Bloomberg

Lower 48 Component Models

Daily Balances

	20-Oct	21-Oct	22-Oct	23-Oct	24-Oct	25-Oct	26-Oct	DoD	vs. 7D
Lower 48 Dry Production	91.5	92.2	92.1	92.2	93.0	93.9	93.0	▼ -0.9	▲ 0.5
Canadian Imports	5.5	5.6	5.7	5.7	5.7	5.7	5.3	▼ -0.4	▼ -0.3
L48 Power	29.7	31.0	29.8	27.0	27.9	29.7	29.4	▼ -0.3	▲ 0.2
L48 Residential & Commercial	12.0	13.2	16.2	17.7	16.9	15.6	18.5	▲ 2.9	▲ 3.2
L48 Industrial	17.5	17.8	18.0	18.5	18.7	18.9	19.2	▲ 0.3	▲ 0.9
L48 Lease and Plant Fuel	5.0	5.0	5.0	5.0	5.1	5.1	5.0	▼ -0.1	▼ 0.0
L48 Pipeline Distribution	2.2	2.4	2.5	2.4	2.4	2.4	2.6	▲ 0.1	▲ 0.2
L48 Regional Gas Consumption	66.5	69.4	71.5	70.7	70.9	71.7	74.6	▲ 3.0	▲ 4.5
Net LNG Delivered	10.16	10.51	10.24	10.73	10.41	11.26	10.73	▼ -0.5	▲ 0.2
Total Mexican Exports	6.5	6.6	6.9	6.2	6.5	7.1	7.1	▲ 0.0	▲ 0.5
Implied Daily Storage Activity	13.9	11.3	9.1	10.3	10.8	9.6	5.8		
EIA Reported Daily Storage Activity									
Daily Model Error									

EIA Storage Week Balances

	17-Sep	24-Sep	1-Oct	8-Oct	15-Oct	22-Oct	WoW	vs. 4W
Lower 48 Dry Production	92.0	93.0	93.3	92.9	92.6	92.4	▼ -0.2	▼ -0.5
Canadian Imports	5.0	5.2	5.7	5.3	4.9	5.6	▲ 0.6	▲ 0.3
L48 Power	35.0	33.3	30.3	32.9	31.7	29.0	▼ -2.7	▼ -3.0
L48 Residential & Commercial	7.1	8.1	8.4	8.2	9.5	13.9	▲ 4.4	▲ 5.4
L48 Industrial	20.8	20.6	20.2	21.9	19.7	18.1	▼ -1.6	▼ -2.5
L48 Lease and Plant Fuel	5.0	5.1	5.1	5.1	5.0	5.0	▼ 0.0	▼ 0.0
L48 Pipeline Distribution	2.3	2.3	2.1	2.2	2.2	2.3	▲ 0.1	▲ 0.1
L48 Regional Gas Consumption	70.3	69.3	66.0	70.2	68.2	68.3	▲ 0.1	▼ -0.1
Net LNG Exports	10.2	9.9	10.3	9.9	10.7	10.8	▲ 0.1	▲ 0.6
Total Mexican Exports	6.6	6.8	6.7	6.5	6.6	6.6	▼ 0.0	▼ -0.1
Implied Daily Storage Activity	9.9	12.2	16.0	11.6	12.0	12.3	0.3	
EIA Reported Daily Storage Activity	10.9	12.6	16.9	11.6	13.1			
Daily Model Error	-1.0	-0.4	-0.9	0.0	-1.1			

Monthly Balances

	2Yr Ago Oct-19	LY Oct-20	Jun-21	Jul-21	Aug-21	Sep-21	MTD Oct-21	MoM	vs. LY
Lower 48 Dry Production	95.1	88.3	93.3	93.3	92.5	92.3	92.6	▲ 0.3	▲ 4.3
Canadian Imports	4.6	4.3	4.9	5.2	5.1	5.1	5.3	▲ 0.2	▲ 1.1
L48 Power	30.3	30.8	35.9	39.4	40.2	33.1	30.7	▼ -2.4	▼ -0.1
L48 Residential & Commercial	15.3	15.3	8.8	8.1	7.7	7.6	11.8	▲ 4.2	▼ -3.5
L48 Industrial	23.5	22.6	20.5	20.9	20.3	20.2	19.7	▼ -0.5	▼ -2.9
L48 Lease and Plant Fuel	5.1	4.8	5.0	5.1	5.0	5.0	5.0	▲ 0.0	▲ 0.2
L48 Pipeline Distribution	2.4	2.5	2.4	2.5	2.5	2.2	2.3	▲ 0.0	▼ -0.2
L48 Regional Gas Consumption	76.6	75.9	72.7	76.0	75.8	68.2	69.5	▲ 1.2	▼ -6.4
Net LNG Exports	6.7	8.0	10.2	10.8	10.5	10.3	10.5	▲ 0.2	▲ 2.5
Total Mexican Exports	5.4	6.0	7.4	7.1	6.9	6.7	6.6	▼ -0.1	▲ 0.6
Implied Daily Storage Activity	11.1	2.7	7.8	4.6	4.5	12.2	11.4		
EIA Reported Daily Storage Activity									
Daily Model Error									

Source: Bloomberg, analytix.ai

Daily Average Generation Data

Nuclear Generation Daily Average - GWh (NRC)

	18-Oct	19-Oct	20-Oct	21-Oct	22-Oct	23-Oct	24-Oct	DoD	vs. 7D
NRC Nuclear Daily Output	72.9	72.2	72.3	72.8	72.3	71.9	72.2	0.3	-0.2
NRC Nuclear Max Capacity	104.9	104.9	104.9	104.9	104.9	104.9	104.9	0.0	0.0
NRC Nuclear Outage	31.9	32.7	32.6	32.1	32.6	33.0	32.7	-0.3	0.2
NRC % Nuclear Cap Utilization	74.2	73.4	73.5	74.0	73.5	73.1	73.4	0.3	-0.2

Wind Generation Daily Average - MWh (EIA)

	18-Oct	19-Oct	20-Oct	21-Oct	22-Oct	23-Oct	24-Oct	DoD	vs. 7D
CALI Wind	3591	634	433	463	2340	3802	2898	-904	1021
TEXAS Wind	16053	17663	8536	5406	10682	17522	11586	-5936	-1058
US Wind	57421	62853	47019	33409	29824	50237	52907	2671	6113

Generation Daily Average - MWh (EIA)

	18-Oct	19-Oct	20-Oct	21-Oct	22-Oct	23-Oct	24-Oct	DoD	vs. 7D
US Wind	57421	62853	47019	33409	29824	50237	52907	2671	6113
US Solar	11164	11629	11497	10532	10089	11119	8875	-2245	-2130
US Petroleum	2744	2721	3224	3517	3671	2447	2378	-69	-676
US Other	11990	12049	11965	12459	12494	10854	9804	-1050	-2165
US Coal	70083	69523	74625	76239	80711	73618	69512	-4106	-4621
US Nuke	73626	73036	73384	73401	72921	74256	74410	154	973
US Hydro	22336	24530	24736	25802	24485	22524	21468	-1055	-2600
US Gas	137258	141215	157017	171153	169194	138250	142384	4134	-9964

See National Wind and Nuclear daily charts

Source: Bloomberg, analytix.ai

Storage Week Average Generation Data

Nuclear Generation Weekly Average - GWh (NRC)

	17-Sep	24-Sep	1-Oct	8-Oct	15-Oct	22-Oct	WoW	WoW Bcf/d Impact
NRC Nuclear Daily Output	86.7	85.9	85.1	82.1	76.5	73.6	-2.9	0.5
NRC Nuclear Max Capacity	104.9	104.9	104.9	104.9	104.9	104.9	0.0	
NRC Nuclear Outage	18.2	19.0	19.8	22.7	28.3	31.2	2.9	
NRC % Nuclear Cap Utilization	0.1	0.1	0.1	0.1	0.1	0.1	0.0	

Wind Generation Weekly Average - MWh (EIA)

	17-Sep	24-Sep	1-Oct	8-Oct	15-Oct	22-Oct	WoW	WoW Bcf/d Impact
CALI Wind	2083	1936	2467	1099	2400	1270	-1130	0.2
TEXAS Wind	9541	9780	10364	4890	15396	10729	-4667	0.8
US Wind	42378	43250	43478	20468	49917	43702	-6216	1.1
					29449.5			
					144%			

Generation Weekly Average - MWh (EIA)

	17-Sep	24-Sep	1-Oct	8-Oct	15-Oct	22-Oct	WoW	WoW Bcf/d Impact
US Wind	42378	43250	43478	20468	49917	43702	-6216	1.1
US Solar	14057	12185	12957	11295	10530	11909	1379	-0.2
US Petroleum	2470	2594	2712	3901	3224	3092	-132	0.0
US Other	9273	9121	8709	10972	12221	11963	-259	0.0
US Coal	115066	109062	94792	100713	89001	72077	-16924	3.0
US Nuke	89490	88789	88402	83696	77046	73748	-3297	0.6
US Hydro	24138	25340	25370	24518	24701	23107	-1593	0.3
US Gas	182116	175354	153813	176848	162483	148896	-13587	2.4

See National Wind and Nuclear daily charts

Source: Bloomberg, analytix.ai

Monthly Average Generation Data

Nuclear Generation Monthly Average - GWh (NRC)

	2Yr Ago	LY	MTD				Last 30 days	MoM (MTD vs LY)	Last 30 days YoY
	Same 30 days	Same 30 days	Jul-21	Aug-21	Sep-21	Oct-21			
	NRC Nuclear Daily Output	80.4	77.8	90.1	91.5	87.2			
NRC Nuclear Max Capacity	104.9	104.9	104.9	104.9	104.9	104.9	104.9	0.0	0.0
NRC Nuclear Outage	24.4	27.0	14.8	13.4	17.7	28.5	27.4	10.8	0.4
NRC % Nuclear Cap Utilization	81.8	79.2	91.6	93.0	88.7	77.7	78.8	-11.0	-0.4

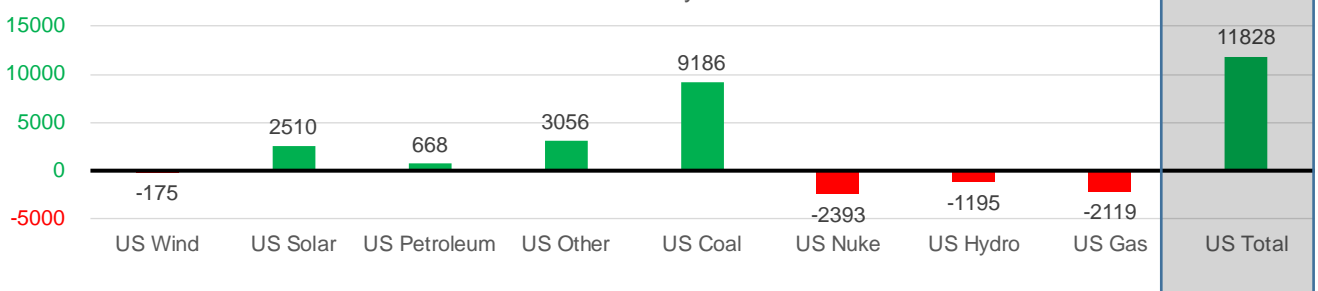
Wind Generation Monthly Average - MWh (EIA)

	2Yr Ago	LY	MTD				Last 30 days	MoM (MTD vs LY)	Last 30 days YoY
	Same 30 days	Same 30 days	Jul-21	Aug-21	Sep-21	Oct-21			
	CALI Wind	1584	1426	2338	2442	2020			
TEXAS Wind	9904	10344	7217	9901	9400	10772	10783	1372	439
US Wind	39358	40437	29217	35830	40222	39900	40262	-322	-175

Generation Monthly Average - MWh (EIA)

	2Yr Ago	LY	MTD				Last 30 days	MoM (MTD vs LY)	Last 30 days YoY
	Same 30 days	Same 30 days	Jul-21	Aug-21	Sep-21	Oct-21			
	US Wind	39358	40437	29217	35830	40222			
US Solar	8102	8664	14140	13787	13379	10922	11175	▲ 253.1	▲ 2510
US Petroleum	3760	2605	4233	4484	2452	3260	3273	▲ 13	▲ 668
US Other	8605	8120	9326	9928	9008	11494	11175	▼ -319	▲ 3056
US Coal	88783	77225	137228	137655	110037	84439	86411	▲ 1972	▲ 9186
US Nuke	86692	81166	92911	94062	90146	77378	78773	▲ 1395	▼ -2393
US Hydro	22859	25185	29941	28532	25661	23757	23990	▲ 232	▼ -1195
US Gas	158344	162797	207823	210824	173536	159700	160678	▲ 3909	▼ -2119
US Total	416756	406070	524834	534937	464627	413387	417899	▲ 7455	▲ 11828

Last 30 days YoY



See National Wind and Nuclear daily charts

Source: Bloomberg, analytix.ai

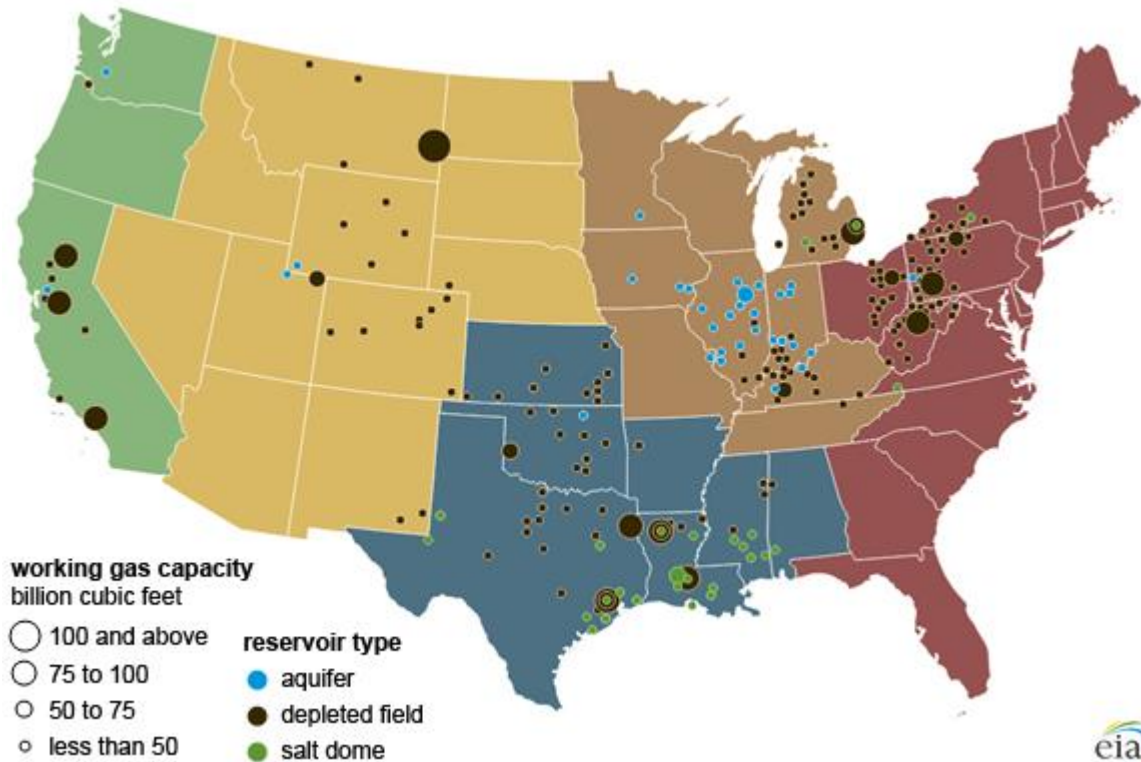
Regional S/D Models Storage Projection

Week Ending 22-Oct

	Daily Raw Storage	Daily Adjustment Factor	Daily Average Storage Activity (Adjusted) *	Weekly Adjusted Storage Activity
L48	12.0	1.0	13.0	91
East	3.3	0.3	3.6	25
Midwest	3.4	-0.4	3.0	21
Mountain	3.4	-3.0	0.4	3
South Central	1.0	4.4	5.4	38
Pacific	0.9	-0.4	0.6	4

*Adjustment Factor is calculated based on historical regional deltas

U.S. underground natural gas storage facilities by type (July 2015)

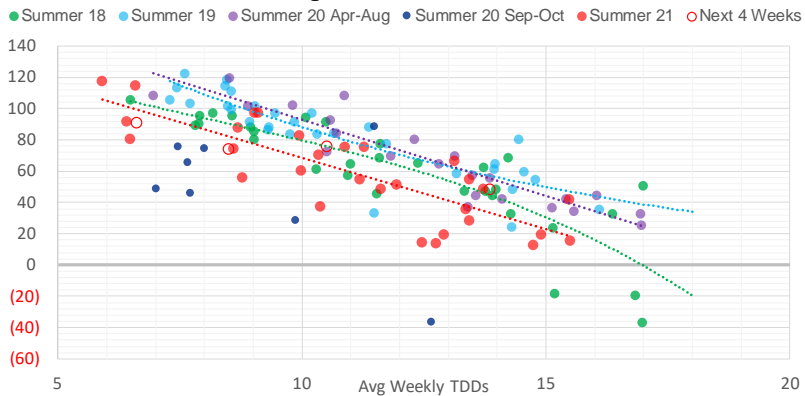


Weather Model Storage Projection

Next report
and beyond

Week Ending	GWDDs	Week Storage Projection
22-Oct	6.6	91
29-Oct	8.5	74
05-Nov	10.5	76
12-Nov	13.9	48

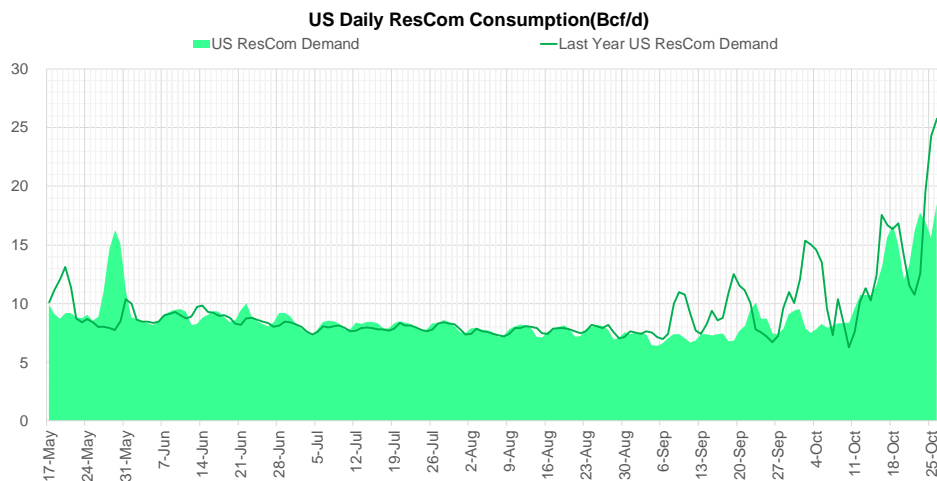
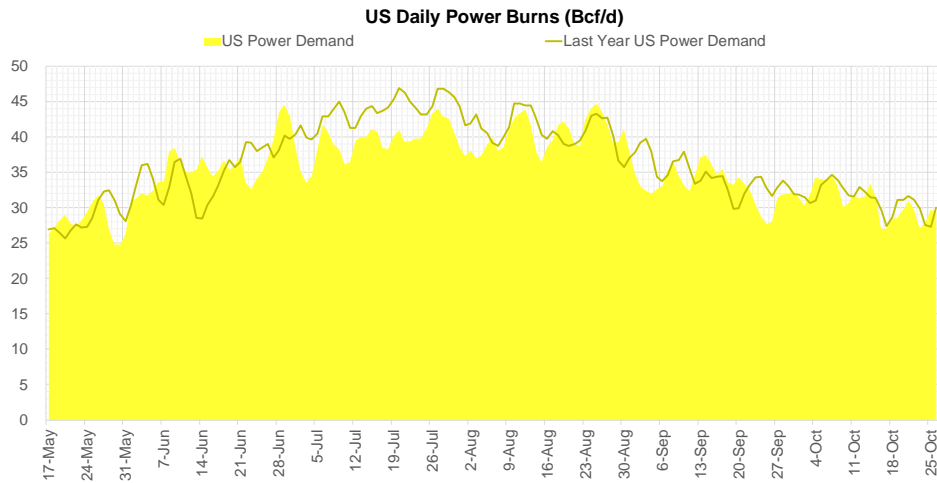
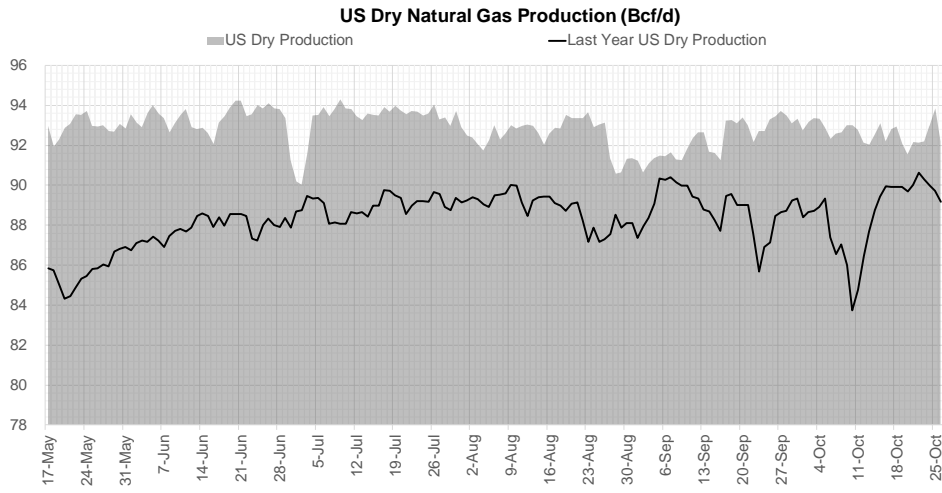
Weather Storage Model - Next 4 Week Forecast



Go to larger image



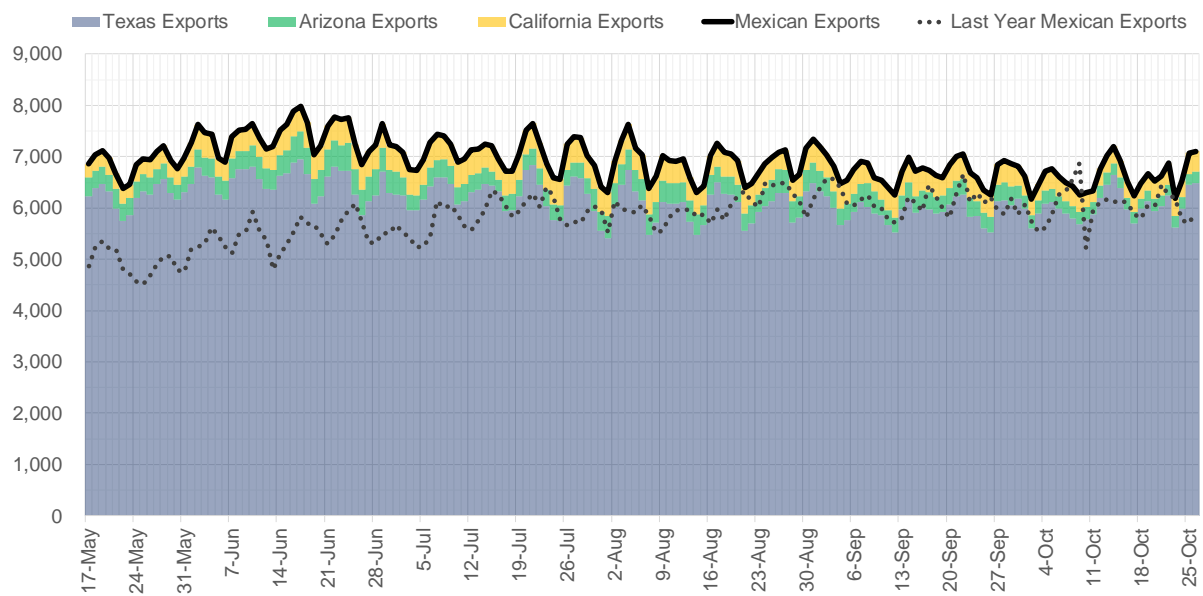
Supply – Demand Trends



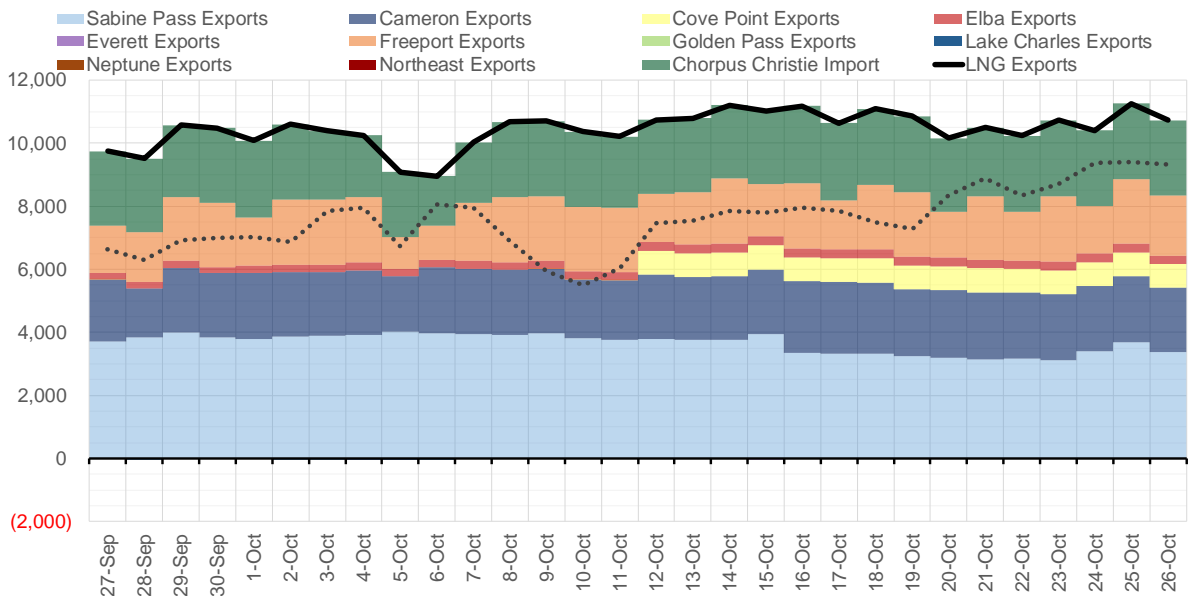
Source: Bloomberg

The risk of trading futures and options and other derivatives involves a substantial risk of loss and is not suitable for all persons. Each person must consider whether a particular trade, combination of trades, or strategy is suitable for that person's financial means and objectives. Past results are not necessarily indicative of future results. This communication may contain links to third party websites which are not under the control of and are not maintained by ION Energy Group, and ION Energy Group is not responsible for their content.

Mexican Exports (MMcf/d)



Net LNG Exports - Last 30 days (MMcf/d)



Source: Bloomberg

The risk of trading futures and options and other derivatives involves a substantial risk of loss and is not suitable for all persons. Each person must consider whether a particular trade, combination of trades, or strategy is suitable for that person's financial means and objectives. Past results are not necessarily indicative of future results. This communication may contain links to third party websites which are not under the control of and are not maintained by ION Energy Group, and ION Energy Group is not responsible for their content.

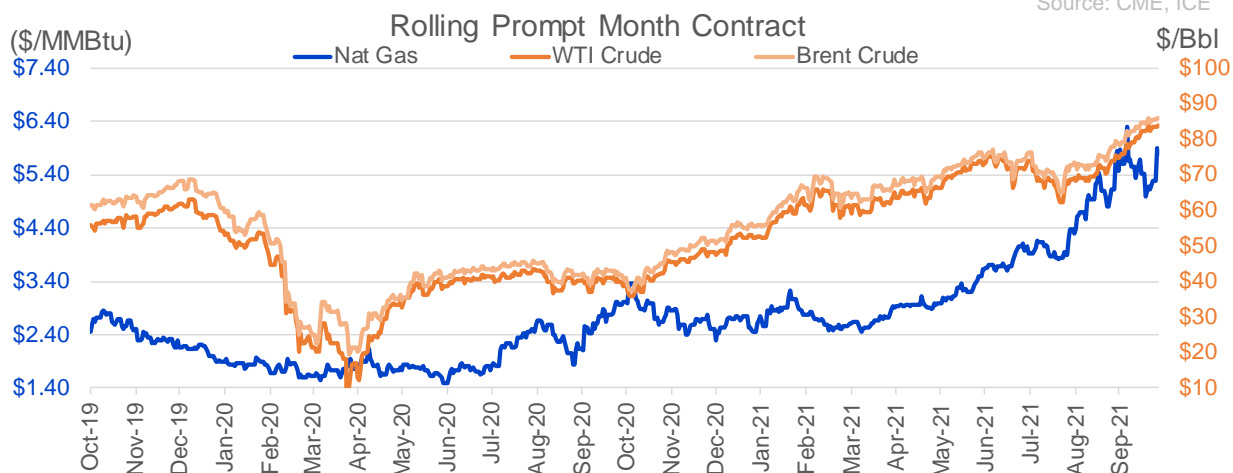
Nat Gas Options Volume and Open Interest CME, ICE and Nasdaq Combined

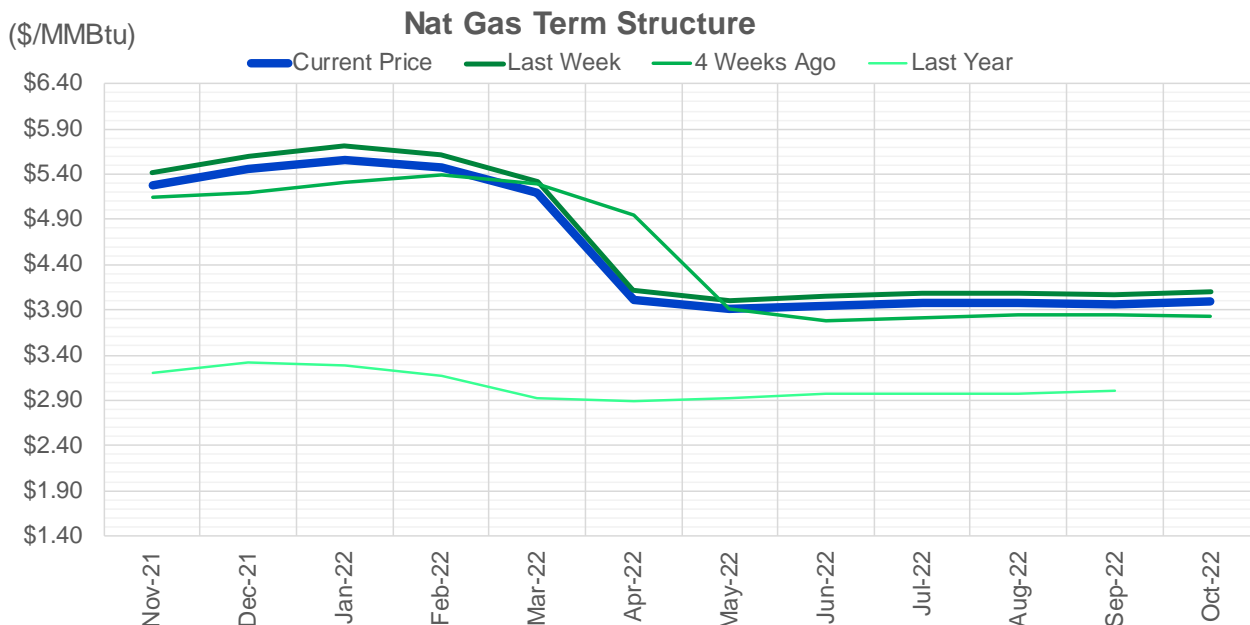
CONTRACT MONTH	CONTRACT YEAR	PUT/CALL	STRIKE	CUMULATIVE VOL	CONTRACT MONTH	CONTRACT YEAR	PUT/CALL	STRIKE	CUMULATIVE OI
11	2021	C	6.00	9712	12	2021	P	2.75	54317
12	2021	P	3.50	7237	12	2021	P	3.00	42321
12	2021	P	4.00	5084	12	2021	P	2.50	39421
11	2021	C	6.25	4039	12	2021	P	4.00	38907
11	2021	P	5.50	3516	11	2021	P	3.00	30166
11	2021	C	5.50	3436	12	2021	P	3.50	29983
11	2021	C	6.50	3139	3	2022	C	10.00	29407
11	2021	C	5.75	3091	11	2021	P	5.00	27244
12	2021	P	4.50	2613	11	2021	P	4.50	27186
11	2021	P	5.30	2508	11	2021	P	4.00	26914
11	2021	P	5.10	2385	11	2021	C	6.00	25291
12	2021	C	10.00	2269	3	2022	C	8.00	25035
12	2021	P	5.50	1848	11	2021	C	7.00	24928
12	2021	C	6.00	1739	12	2021	C	4.00	22527
12	2021	C	7.00	1738	3	2022	C	5.00	22368
11	2021	C	6.15	1700	1	2022	C	6.00	20817
11	2021	C	5.65	1646	11	2021	P	3.50	20148
12	2021	P	5.00	1509	11	2021	C	4.00	20140
11	2021	C	5.80	1462	1	2022	P	2.75	20006
11	2021	C	6.10	1442	1	2022	P	3.50	19766
11	2021	P	5.70	1394	4	2022	C	3.00	19710
11	2021	C	5.90	1367	1	2022	P	3.00	18846
12	2021	C	9.00	1342	3	2022	P	2.50	18386
12	2021	C	7.50	1148	3	2022	P	3.50	18227
2	2022	C	20.00	1061	1	2022	C	5.00	17710
12	2021	P	5.40	1023	12	2021	C	6.00	17584
1	2022	C	6.00	941	11	2021	C	5.00	17253
11	2021	P	5.00	925	12	2021	P	2.00	16879
12	2021	C	8.00	922	3	2022	P	4.00	16857
3	2022	C	20.00	910	2	2022	C	5.00	16814
11	2021	P	5.25	870	1	2022	P	4.00	16214
2	2022	C	10.00	860	12	2021	C	8.00	15804
1	2022	P	4.00	758	3	2022	C	4.00	15631
2	2022	P	4.00	731	12	2021	C	7.00	15567
5	2022	P	4.00	725	4	2022	P	2.50	15489
11	2021	C	6.20	683	2	2022	P	3.50	15275
11	2021	C	6.30	661	11	2021	C	5.50	15223
1	2022	P	5.50	654	12	2022	C	5.00	15182
1	2022	C	10.00	647	11	2021	P	4.75	15098
11	2021	C	7.00	639	12	2021	P	5.00	15089
1	2022	C	7.00	629	12	2021	P	4.50	15053
11	2021	P	5.40	606	11	2021	C	4.50	14922
12	2021	P	4.75	559	4	2022	C	5.00	14529
11	2021	P	5.80	559	11	2021	P	2.50	14488
3	2022	C	7.00	535	11	2021	C	3.75	14478
11	2021	C	6.40	518	1	2022	C	4.00	14463
2	2022	P	4.25	504	11	2021	P	3.25	14311
11	2021	P	5.75	500	2	2022	C	6.00	13698
2	2022	P	3.75	500	2	2022	P	4.00	13602
					3	2022	C	7	13510.5

Source: CME, ICE

Nat Gas Futures Open Interest CME, and ICE Combined

CME Henry Hub Futures (10,000 MMBtu)				ICE Henry Hub Futures Contract Equivalent (10,000 MM			
	Current	Prior	Daily Change		Current	Prior	Daily Change
NOV 21	15412	22010	-6598	NOV 21	83404	84781	-1377
DEC 21	176606	168941	7665	DEC 21	92181	90622	1559
JAN 22	231047	230946	101	JAN 22	94080	93599	480
FEB 22	74358	72834	1524	FEB 22	69543	69637	-94
MAR 22	154762	152409	2353	MAR 22	76546	76441	105
APR 22	114366	112963	1403	APR 22	76642	76583	59
MAY 22	118405	114018	4387	MAY 22	71249	71125	125
JUN 22	41306	40739	567	JUN 22	55059	54340	719
JUL 22	38407	38784	-377	JUL 22	57392	57106	287
AUG 22	29815	29553	262	AUG 22	55741	55524	217
SEP 22	32974	32614	360	SEP 22	56812	56639	174
OCT 22	82955	82156	799	OCT 22	62157	62013	144
NOV 22	34801	34507	294	NOV 22	49020	48844	176
DEC 22	25905	25699	206	DEC 22	52240	52099	141
JAN 23	29983	29220	763	JAN 23	39388	39186	202
FEB 23	11200	10635	565	FEB 23	32413	32253	160
MAR 23	17228	16373	855	MAR 23	34705	34508	198
APR 23	15854	15527	327	APR 23	35180	35027	153
MAY 23	9032	9027	5	MAY 23	34351	34061	290
JUN 23	7128	7108	20	JUN 23	30553	30297	256
JUL 23	4799	4779	20	JUL 23	30765	30470	295
AUG 23	3897	3901	-4	AUG 23	31726	31471	255
SEP 23	4735	4733	2	SEP 23	29776	29502	274
OCT 23	5943	5915	28	OCT 23	33493	33247	246
NOV 23	3362	3332	30	NOV 23	32269	32292	-23
DEC 23	4169	4139	30	DEC 23	28242	28277	-35
JAN 24	1404	1404	0	JAN 24	16483	16460	23
FEB 24	1171	1171	0	FEB 24	13873	13814	60
MAR 24	4649	4635	14	MAR 24	18551	18536	16
APR 24	3502	3502	0	APR 24	13053	12986	68





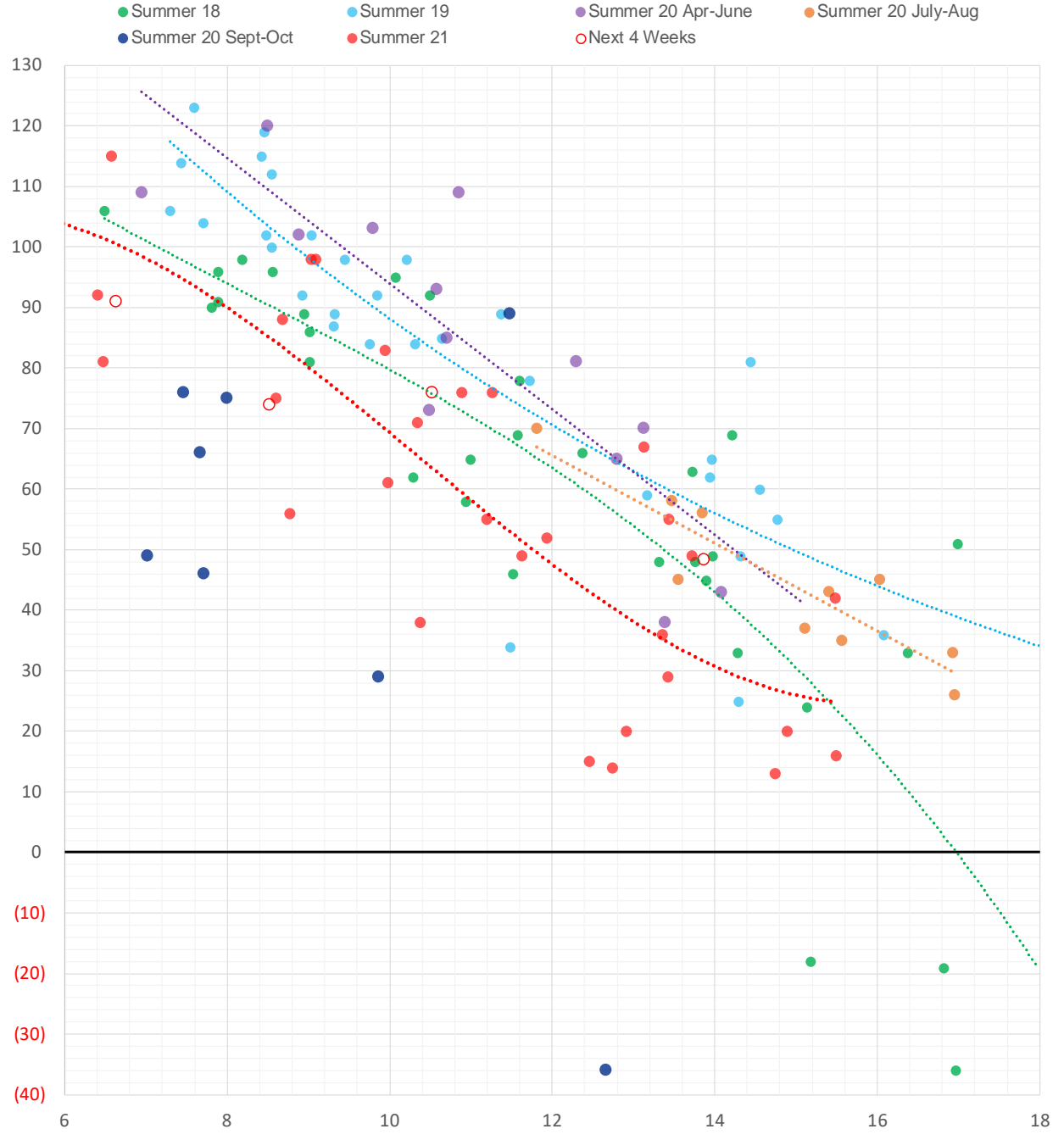
	Nov-21	Dec-21	Jan-22	Feb-22	Mar-22	Apr-22	May-22	Jun-22	Jul-22	Aug-22	Sep-22	Oct-22
Current Price	\$5.280	\$5.461	\$5.565	\$5.473	\$5.187	\$4.012	\$3.904	\$3.940	\$3.980	\$3.984	\$3.965	\$3.996
Last Week	\$5.410	\$5.600	\$5.708	\$5.613	\$5.317	\$4.121	\$4.008	\$4.046	\$4.087	\$4.091	\$4.073	\$4.104
vs. Last Week	-\$0.130	-\$0.139	-\$0.143	-\$0.140	-\$0.130	-\$0.109	-\$0.104	-\$0.106	-\$0.107	-\$0.107	-\$0.108	-\$0.108
4 Weeks Ago	\$5.140	\$5.200	\$5.315	\$5.391	\$5.289	\$4.949	\$3.905	\$3.775	\$3.805	\$3.847	\$3.852	\$3.831
vs. 4 Weeks Ago	\$0.140	\$0.261	\$0.250	\$0.082	-\$0.102	-\$0.937	-\$0.001	\$0.165	\$0.175	\$0.137	\$0.113	\$0.165
Last Year	\$2.971	\$3.195	\$3.322	\$3.285	\$3.175	\$2.927	\$2.892	\$2.924	\$2.966	\$2.979	\$2.968	\$3.004
vs. Last Year	\$2.309	\$2.266	\$2.243	\$2.188	\$2.012	\$1.085	\$1.012	\$1.016	\$1.014	\$1.005	\$0.997	\$0.992

	Units	Cash Settled	Prompt Settle	Cash to Prompt
AGT Citygate	\$/MMBtu	5.80	7.45	1.65
TETCO M3	\$/MMBtu	5.39	4.69	-0.70
FGT Zone 3	\$/MMBtu	5.48	5.13	-0.35
Zone 6 NY	\$/MMBtu	5.48	4.87	-0.61
Chicago Citygate	\$/MMBtu	5.58	4.91	-0.67
Michcon	\$/MMBtu	5.55	4.75	-0.80
Columbia TCO Pool	\$/MMBtu	5.24	4.41	-0.83
Ventura	\$/MMBtu	4.82	5.12	0.30
Rockies/Opal	\$/MMBtu	5.75	4.64	-1.11
El Paso Permian Basin	\$/MMBtu	5.19	4.66	-0.53
Socal Citygate	\$/MMBtu	6.52	5.35	-1.17
Malin	\$/MMBtu	5.64	5.19	-0.45
Houston Ship Channel	\$/MMBtu	5.52	4.86	-0.66
Henry Hub Cash	\$/MMBtu	5.60	4.78	-0.82
AECO Cash	C\$/GJ	4.36	3.64	-0.72
Station2 Cash	C\$/GJ	3.92	5.74	1.82
Dawn Cash	C\$/GJ	5.56	4.81	-0.75

Source: CME, Bloomberg

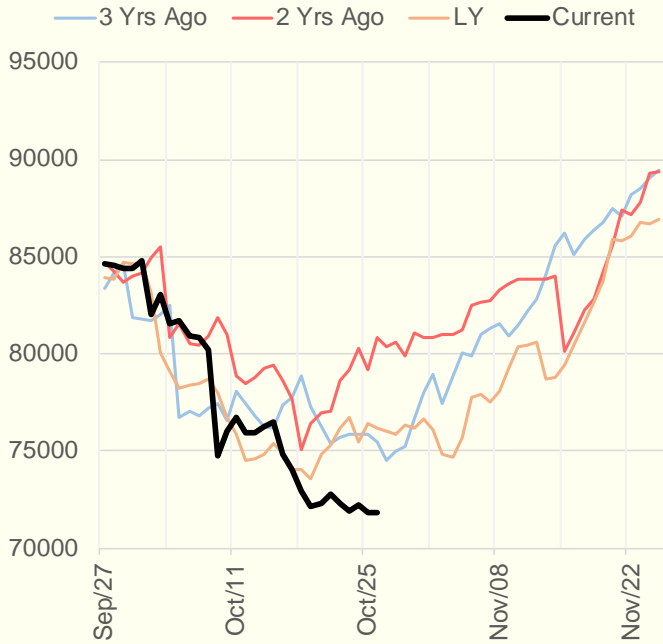
	Units	Current Price	vs. Last Week	vs. 4 Weeks		vs. Last Year
				Ago		
NatGas Jul21/Oct21	\$/MMBtu	2.224	▲ 0.000	▲ 0.135	▲ 2.191	
NatGas Oct21/Nov21	\$/MMBtu	0.057	▲ 0.909	▲ 0.032	▼ -0.005	
NatGas Oct21/Jan22	\$/MMBtu	0.308	▲ 0.803	▲ 0.104	▲ 0.010	
NatGas Apr22/Oct22	\$/MMBtu	-0.057	▼ -0.063	▲ 0.032	▼ -0.083	
WTI Crude	\$/Bbl	83.76	▲ 1.320	▲ 8.310	▲ 45.200	
Brent Crude	\$/Bbl	85.99	▲ 1.660	▲ 6.460	▲ 45.530	
Fuel Oil, NY Harbour 1%	\$/Bbl	97.18	▲ 0.000	▲ 0.000	▲ 0.000	
Heating Oil	cents/Gallon	256.47	▲ 1.550	▲ 26.870	▲ 144.290	
Propane, Mt. Bel	cents/Gallon	1.45	▼ -0.031	▲ 0.164	▲ 0.925	
Ethane, Mt. Bel	cents/Gallon	0.44	▲ 0.005	▲ 0.047	▲ 0.222	
Coal, PRB	\$/MTon	12.30	▲ 0.000	▲ 0.000	▲ 0.000	
Coal, PRB	\$/MMBtu	0.70				
Coal, ILB	\$/MTon	31.05	▲ 0.000	▲ 0.000	▲ 0.000	
Coal, ILB	\$/MMBtu	1.32				

Weather Storage Model - Next 4 Week Forecast

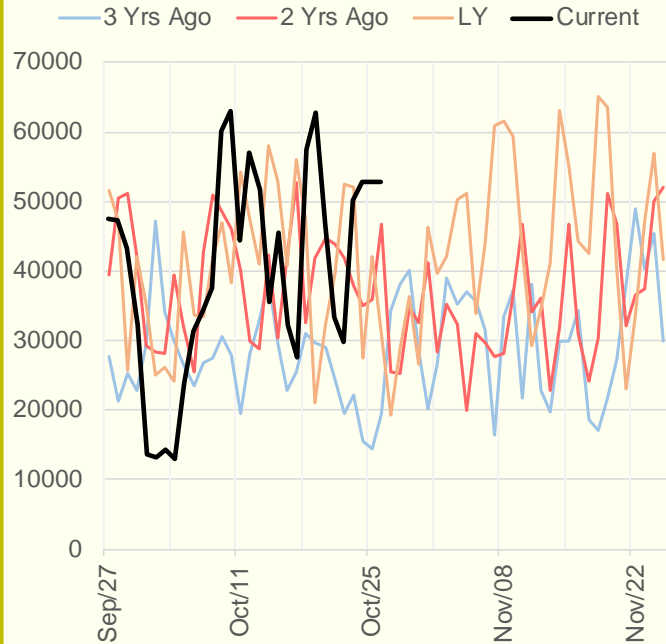


The risk of trading futures and options and other derivatives involves a substantial risk of loss and is not suitable for all persons. Each person must consider whether a particular trade, combination of trades, or strategy is suitable for that person's financial means and objectives. Past results are not necessarily indicative of future results. This communication may contain links to third party websites which are not under the control of and are not maintained by ION Energy Group, and ION Energy Group is not responsible for their content.

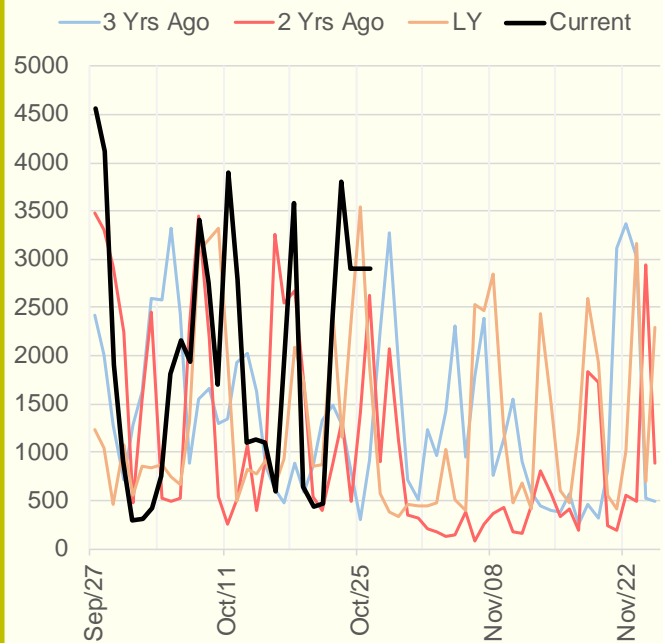
NRC Nuclear Daily Output



US Wind



CALI Wind



TEXAS Wind

