

	Current	Δ from YD	Δ from 7D Avg
Nat Gas Prompt	\$ 5.60 ▲	\$ 0.32 ▲	\$ 0.43

	Current	Δ from YD	Δ from 7D Avg
WTI Prompt	\$ 84.82 ▲	\$ 1.06 ▲	\$ 1.5

	Current	Δ from YD	Δ from 7D Avg
Brent Prompt	\$ 86.45 ▲	\$ 0.92 ▲	\$ 1.2

Page Menu

[Short-term Weather Model Outlooks](#)

[Lower 48 Component Models](#)

[Regional S/D Models Storage Projection](#)

[Weather Model Storage Projection](#)

[Supply – Demand Trends](#)

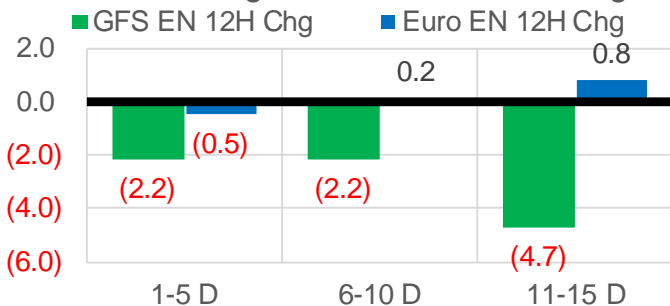
[Nat Gas Options Volume and Open Interest](#)

[Nat Gas Futures Open Interest](#)

[Price Summary](#)

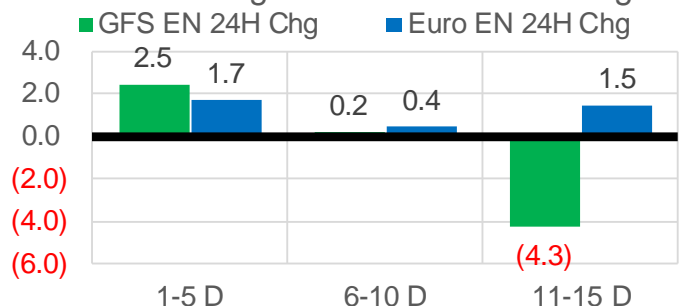
Vs. 12H Ago

L48 Region - 00z TDD vs 12H Ago



Vs. 24H Ago

L48 Region - 00z TDD vs 24H Ago



	Current	Δ from YD	Δ from 7D Avg
US Dry Production	92.5 ▼	-0.36 ▲	0.30

	Current	Δ from YD	Δ from 7D Avg
US Power Burns	28.6 ▲	0.79 ▼	-0.23

	Current	Δ from YD	Δ from 7D Avg
US ResComm	15.1 ▼	-1.88 ▼	-0.33

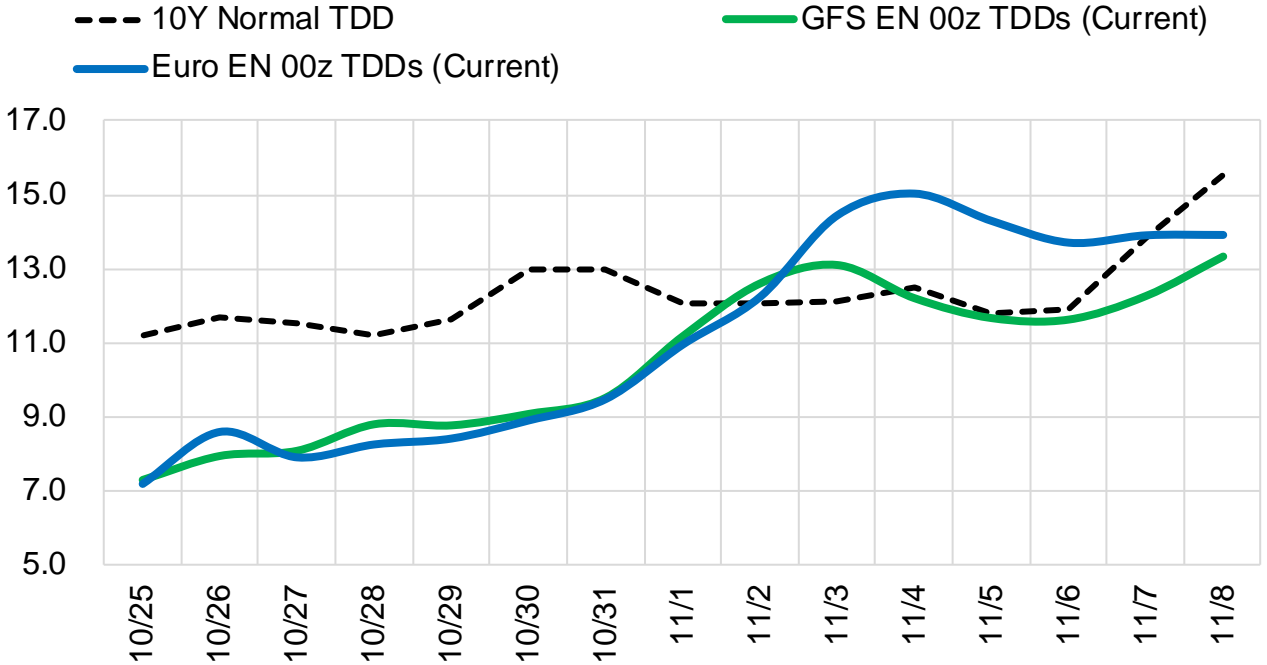
	Current	Δ from YD	Δ from 7D Avg
Canadian Imports	5.4 ▼	-0.27 ▼	-0.20

	Current	Δ from YD	Δ from 7D Avg
Net LNG Exports	11.3 ▲	0.92 ▲	0.75

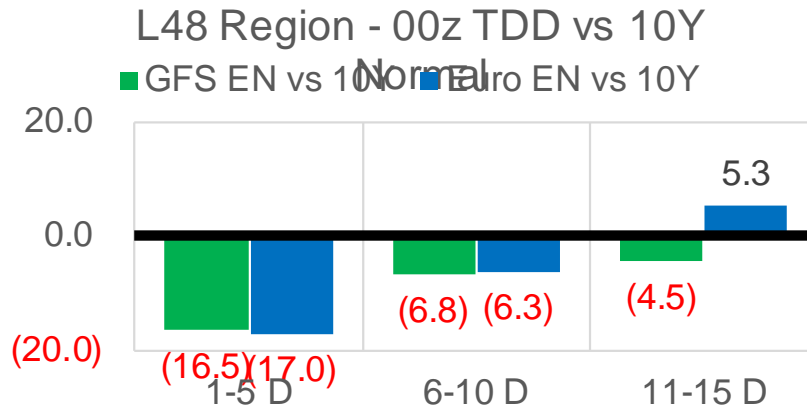
	Current	Δ from YD	Δ from 7D Avg
Mexican Exports	5.8 ▼	-0.70 ▼	-0.76

Short-term Weather Model Outlooks (00z)

L48 Region



Vs. 10Y Normal



Source: WSI , Bloomberg

Lower 48 Component Models

Daily Balances

	19-Oct	20-Oct	21-Oct	22-Oct	23-Oct	24-Oct	25-Oct	DoD	vs. 7D
Lower 48 Dry Production	92.0	91.5	92.1	91.9	92.1	92.9	92.5	▼ -0.4	▲ 0.4
Canadian Imports	5.7	5.5	5.6	5.7	5.7	5.7	5.4	▼ -0.3	▼ -0.2
L48 Power	28.5	29.7	30.7	29.7	27.1	27.8	28.6	▲ 0.8	▼ -0.3
L48 Residential & Commercial	15.0	12.0	13.1	16.2	17.8	16.9	15.1	▼ -1.9	▼ -0.1
L48 Industrial	17.6	17.5	17.9	18.2	18.7	19.0	19.0	▲ 0.0	▲ 0.8
L48 Lease and Plant Fuel	5.0	5.0	5.0	5.0	5.0	5.1	5.0	▼ -0.1	▼ 0.0
L48 Pipeline Distribution	2.3	2.2	2.3	2.4	2.4	2.4	2.3	▼ -0.1	▼ 0.0
L48 Regional Gas Consumption	68.5	66.5	69.1	71.4	71.0	71.2	70.0	▼ -1.2	▲ 0.3
Net LNG Delivered	10.87	10.16	10.51	10.24	10.73	10.41	11.33	▲ 0.9	▲ 0.8
Total Mexican Exports	6.7	6.5	6.6	6.9	6.2	6.5	5.8	▼ -0.7	▼ -0.8
Implied Daily Storage Activity	11.7	13.9	11.4	9.0	10.0	10.5	10.9		
EIA Reported Daily Storage Activity									
Daily Model Error									

EIA Storage Week Balances

	17-Sep	24-Sep	1-Oct	8-Oct	15-Oct	22-Oct	WoW	vs. 4W
Lower 48 Dry Production	92.0	93.0	93.3	92.9	92.6	92.4	▼ -0.2	▼ -0.6
Canadian Imports	5.0	5.2	5.7	5.3	4.9	5.6	▲ 0.6	▲ 0.3
L48 Power	35.0	33.3	30.3	32.9	31.7	29.0	▼ -2.7	▼ -3.1
L48 Residential & Commercial	7.1	8.1	8.4	8.2	9.5	13.9	▲ 4.3	▲ 5.3
L48 Industrial	20.8	20.6	20.2	21.9	19.7	18.1	▼ -1.7	▼ -2.5
L48 Lease and Plant Fuel	5.0	5.1	5.1	5.1	5.0	5.0	▼ 0.0	▼ 0.0
L48 Pipeline Distribution	2.3	2.3	2.1	2.2	2.2	2.3	▲ 0.1	▲ 0.1
L48 Regional Gas Consumption	70.3	69.3	66.0	70.2	68.2	68.2	▲ 0.0	▼ -0.2
Net LNG Exports	10.2	9.9	10.3	9.9	10.7	10.8	▲ 0.1	▲ 0.6
Total Mexican Exports	6.6	6.8	6.7	6.5	6.6	6.6	▼ 0.0	▼ -0.1
Implied Daily Storage Activity	9.9	12.2	16.0	11.6	12.0	12.4	0.3	
EIA Reported Daily Storage Activity	10.9	12.6	16.9	11.6	13.1			
Daily Model Error	-1.0	-0.4	-0.9	0.0	-1.1			

Monthly Balances

	2Yr Ago Oct-19	LY Oct-20	Jun-21	Jul-21	Aug-21	Sep-21	MTD Oct-21	MoM	vs. LY
Lower 48 Dry Production	95.1	88.3	93.3	93.3	92.5	92.3	92.6	▲ 0.2	▲ 4.2
Canadian Imports	4.6	4.3	4.9	5.2	5.1	5.1	5.3	▲ 0.2	▲ 1.1
L48 Power	30.3	30.8	35.9	39.4	40.2	33.1	30.7	▼ -2.4	▼ -0.1
L48 Residential & Commercial	15.3	15.3	8.8	8.1	7.7	7.6	11.5	▲ 3.9	▼ -3.8
L48 Industrial	23.5	22.6	20.5	20.9	20.3	20.2	19.7	▼ -0.5	▼ -2.9
L48 Lease and Plant Fuel	5.1	4.8	5.0	5.1	5.0	5.0	5.0	▲ 0.0	▲ 0.2
L48 Pipeline Distribution	2.4	2.5	2.4	2.5	2.5	2.2	2.3	▲ 0.0	▼ -0.2
L48 Regional Gas Consumption	76.6	75.9	72.7	76.0	75.8	68.2	69.2	▲ 1.0	▼ -6.7
Net LNG Exports	6.7	8.0	10.2	10.8	10.5	10.3	10.5	▲ 0.2	▲ 2.5
Total Mexican Exports	5.4	6.0	7.4	7.1	6.9	6.7	6.5	▼ -0.2	▲ 0.5
Implied Daily Storage Activity	11.1	2.7	7.8	4.6	4.5	12.2	11.7		
EIA Reported Daily Storage Activity									
Daily Model Error									

Source: Bloomberg, analytix.ai

Daily Average Generation Data

Nuclear Generation Daily Average - GWh (NRC)

	17-Oct	18-Oct	19-Oct	20-Oct	21-Oct	22-Oct	23-Oct	DoD	vs. 7D
NRC Nuclear Daily Output	74.0	72.9	72.2	72.3	72.8	72.3	72.3	0.0	-0.5
NRC Nuclear Max Capacity	104.9	104.9	104.9	104.9	104.9	104.9	104.9	0.0	0.0
NRC Nuclear Outage	30.9	31.9	32.7	32.6	32.1	32.6	32.6	0.0	0.5
NRC % Nuclear Cap Utilization	75.3	74.2	73.4	73.5	74.0	73.5	73.5	0.0	-0.5

Wind Generation Daily Average - MWh (EIA)

	17-Oct	18-Oct	19-Oct	20-Oct	21-Oct	22-Oct	23-Oct	DoD	vs. 7D
CALI Wind	2072	3591	634	433	463	2340	3802	1462	2213
TEXAS Wind	8176	16053	17663	8536	5406	10682	17522	6839	6436
US Wind	27619	57421	62853	47019	33409	29824	50237	20413	7212

Generation Daily Average - MWh (EIA)

	17-Oct	18-Oct	19-Oct	20-Oct	21-Oct	22-Oct	23-Oct	DoD	vs. 7D
US Wind	27619	57421	62853	47019	33409	29824	50237	20413	7212
US Solar	12135	11164	11629	11497	10532	10089	11128	1039	-47
US Petroleum	2850	2744	2721	3224	3517	3671	2447	-1224	-674
US Other	10889	11978	12049	11965	12459	12494	10856	-1638	-1116
US Coal	62878	70083	69523	74625	76239	80711	73618	-7093	1274
US Nuke	73080	73626	73036	73384	73401	72921	74256	1335	1014
US Hydro	19715	22335	24530	24736	25802	24485	22523	-1961	-1077
US Gas	124200	137233	141215	157017	171153	169194	138252	-30942	-11750

See National Wind and Nuclear daily charts

Source: Bloomberg, analytix.ai

Storage Week Average Generation Data

Nuclear Generation Weekly Average - GWh (NRC)

	17-Sep	24-Sep	1-Oct	8-Oct	15-Oct	22-Oct	WoW	WoW Bcf/d Impact
NRC Nuclear Daily Output	86.7	85.9	85.1	82.1	76.5	73.6	-2.9	0.5
NRC Nuclear Max Capacity	104.9	104.9	104.9	104.9	104.9	104.9	0.0	
NRC Nuclear Outage	18.2	19.0	19.8	22.7	28.3	31.2	2.9	
NRC % Nuclear Cap Utilization	0.1	0.1	0.1	0.1	0.1	0.1	0.0	

Wind Generation Weekly Average - MWh (EIA)

	17-Sep	24-Sep	1-Oct	8-Oct	15-Oct	22-Oct	WoW	WoW Bcf/d Impact
CALI Wind	2083	1936	2467	1099	2400	1270	-1130	0.2
TEXAS Wind	9541	9780	10364	4890	15396	10729	-4667	0.8
US Wind	42378	43250	43478	20468	49917	43702	-6216	1.1
					29449.5			
					144%			

Generation Weekly Average - MWh (EIA)

	17-Sep	24-Sep	1-Oct	8-Oct	15-Oct	22-Oct	WoW	WoW Bcf/d Impact
US Wind	42378	43250	43478	20468	49917	43702	-6216	1.1
US Solar	14057	12185	12957	11295	10530	11812	1282	-0.2
US Petroleum	2470	2594	2712	3901	3224	3092	-132	0.0
US Other	9273	9121	8709	10972	12221	11921	-300	0.1
US Coal	115066	109062	94792	100713	89001	72077	-16924	3.0
US Nuke	89490	88789	88402	83696	77046	73748	-3297	0.6
US Hydro	24138	25340	25370	24518	24701	23084	-1617	0.3
US Gas	182116	175354	153813	176848	162483	148802	-13682	2.5

See National Wind and Nuclear daily charts

Source: Bloomberg, analytix.ai

Monthly Average Generation Data

Nuclear Generation Monthly Average - GWh (NRC)

	2Yr Ago	LY	MTD				Last 30 days	MoM (MTD vs LY)	Last 30 days YoY
	Same 30 days	Same 30 days	Jul-21	Aug-21	Sep-21	Oct-21			
NRC Nuclear Daily Output	80.6	78.2	90.1	91.5	87.2	76.6	78.0	-10.6	-0.2
NRC Nuclear Max Capacity	104.9	104.9	104.9	104.9	104.9	104.9	104.9	0.0	0.0
NRC Nuclear Outage	24.3	26.7	14.8	13.4	17.7	28.3	26.9	10.6	0.2
NRC % Nuclear Cap Utilization	81.9	79.5	91.6	93.0	88.7	77.9	79.3	-10.8	-0.2

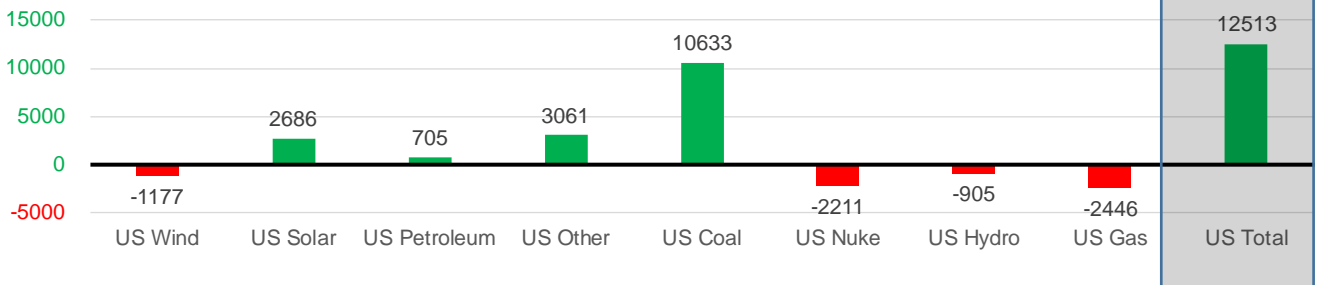
Wind Generation Monthly Average - MWh (EIA)

	2Yr Ago	LY	MTD				Last 30 days	MoM (MTD vs LY)	Last 30 days YoY
	Same 30 days	Same 30 days	Jul-21	Aug-21	Sep-21	Oct-21			
CALI Wind	1633	1444	2338	2442	2020	1885	2063	-135	619
TEXAS Wind	9897	10475	7217	9901	9400	11214	11186	1815	712
US Wind	39316	41274	29217	35830	40222	39166	40096	-1056	-1177

Generation Monthly Average - MWh (EIA)

	2Yr Ago	LY	MTD				Last 30 days	MoM (MTD vs LY)	Last 30 days YoY
	Same 30 days	Same 30 days	Jul-21	Aug-21	Sep-21	Oct-21			
US Wind	39316	41274	29217	35830	40222	39166	40096	▲ 930.4	▼ -1177
US Solar	8173	8751	14140	13787	13379	11157	11437	▲ 280.3	▲ 2686
US Petroleum	3806	2561	4233	4484	2452	3301	3266	▼ -36	▲ 705
US Other	8618	8105	9326	9928	9008	11634	11165	▼ -469	▲ 3061
US Coal	90154	76549	137228	137655	110037	85364	87182	▲ 1817	▲ 10633
US Nuke	86823	81455	92911	94062	90146	77485	79244	▲ 1759	▼ -2211
US Hydro	22924	25025	29941	28532	25661	23927	24120	▲ 193	▼ -905
US Gas	159823	162349	207823	210824	173536	160035	159904	▲ 4475	▼ -2446
US Total	419916	405969	524834	534937	464627	414576	418481	▲ 8020	▲ 12513

Last 30 days YoY



See National Wind and Nuclear daily charts

Source: Bloomberg, analytix.ai

Regional S/D Models Storage Projection

Week Ending 22-Oct

	Daily Raw Storage	Daily Adjustment Factor	Daily Average Storage Activity (Adjusted) *	Weekly Adjusted Storage Activity
L48	12.1	1.0	13.1	91
East	3.3	0.3	3.6	25
Midwest	3.4	-0.4	3.0	21
Mountain	3.4	-3.0	0.4	3
South Central	1.0	4.4	5.4	38
Pacific	0.9	-0.4	0.6	4

*Adjustment Factor is calculated based on historical regional deltas

U.S. underground natural gas storage facilities by type (July 2015)

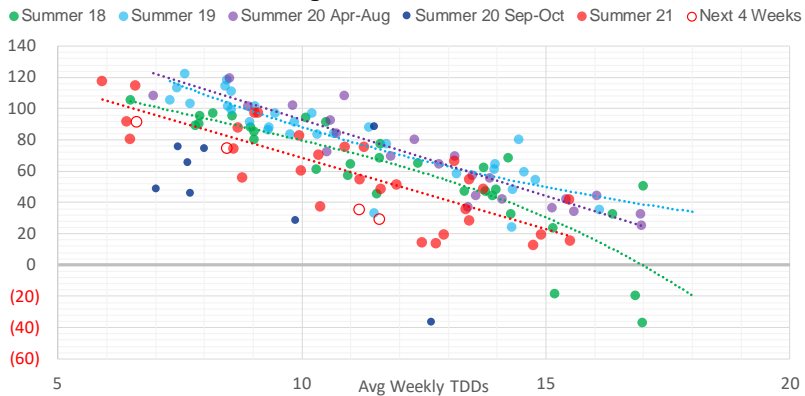


Weather Model Storage Projection

Next report
and beyond

Week Ending	GWDDs	Week Storage Projection
22-Oct	6.6	91
29-Oct	8.5	74
05-Nov	11.2	35
12-Nov	11.6	29

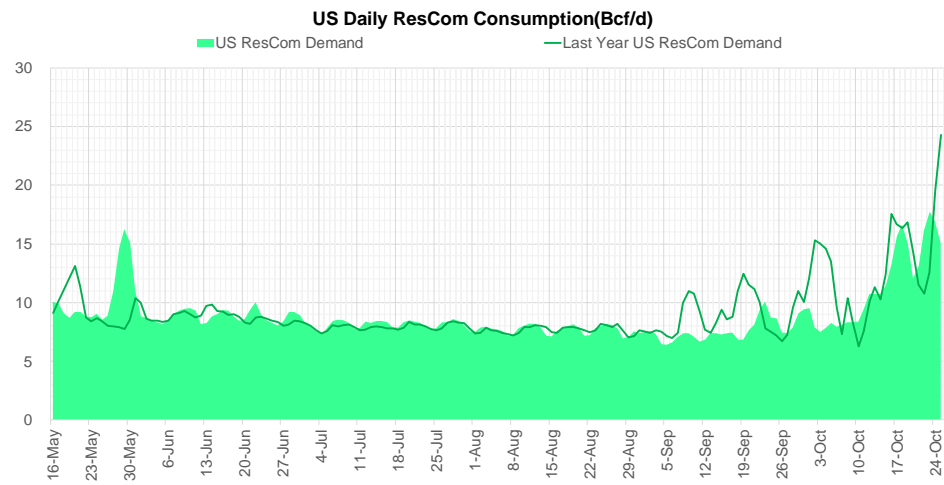
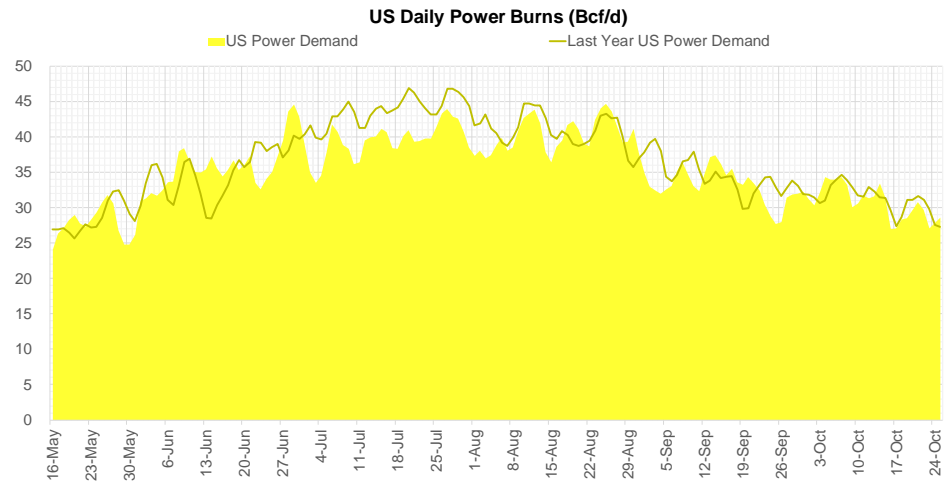
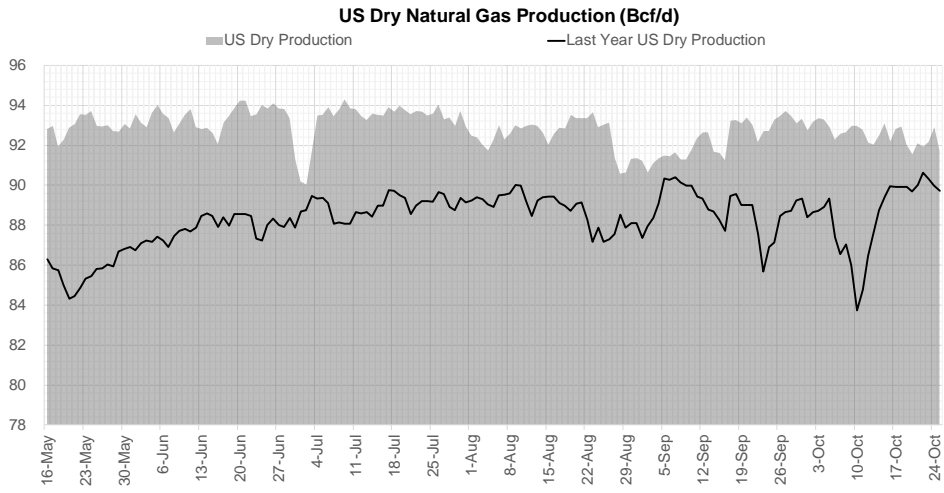
Weather Storage Model - Next 4 Week Forecast



Go to larger image



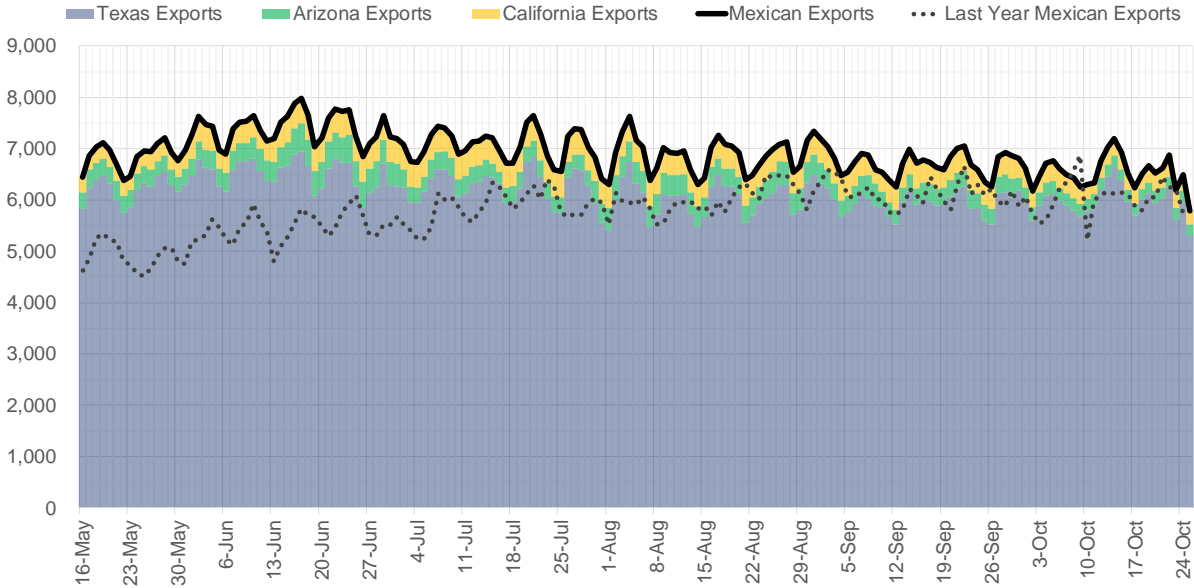
Supply – Demand Trends



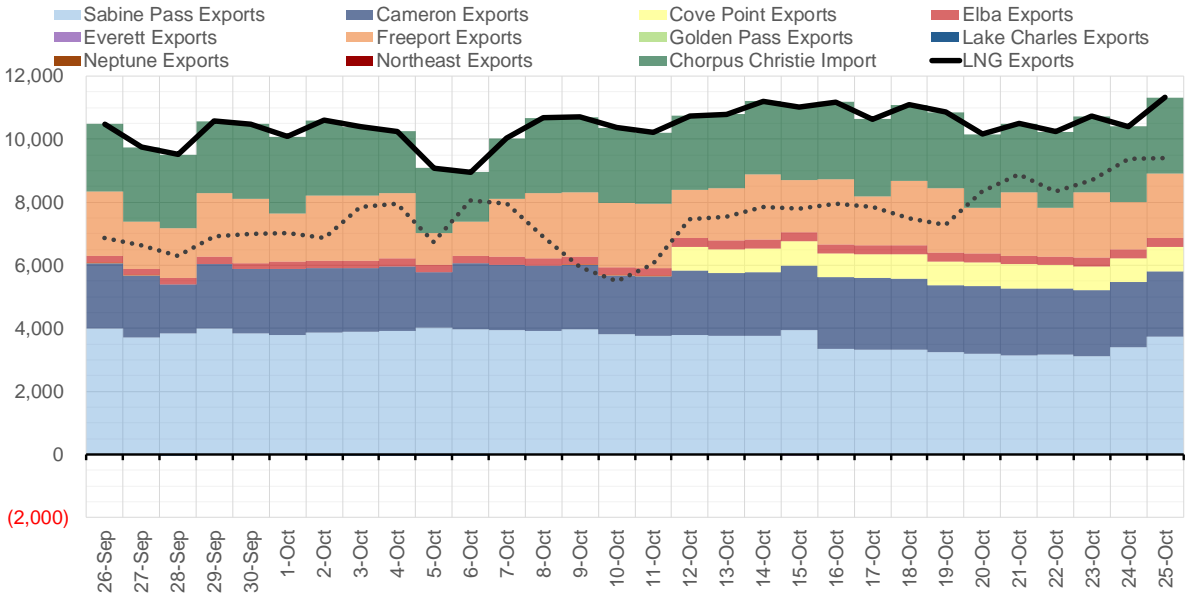
Source: Bloomberg

The risk of trading futures and options and other derivatives involves a substantial risk of loss and is not suitable for all persons. Each person must consider whether a particular trade, combination of trades, or strategy is suitable for that person's financial means and objectives. Past results are not necessarily indicative of future results. This communication may contain links to third party websites which are not under the control of and are not maintained by ION Energy Group, and ION Energy Group is not responsible for their content.

Mexican Exports (MMcf/d)



Net LNG Exports - Last 30 days (MMcf/d)



Source: Bloomberg

The risk of trading futures and options and other derivatives involves a substantial risk of loss and is not suitable for all persons. Each person must consider whether a particular trade, combination of trades, or strategy is suitable for that person's financial means and objectives. Past results are not necessarily indicative of future results. This communication may contain links to third party websites which are not under the control of and are not maintained by ION Energy Group, and ION Energy Group is not responsible for their content.

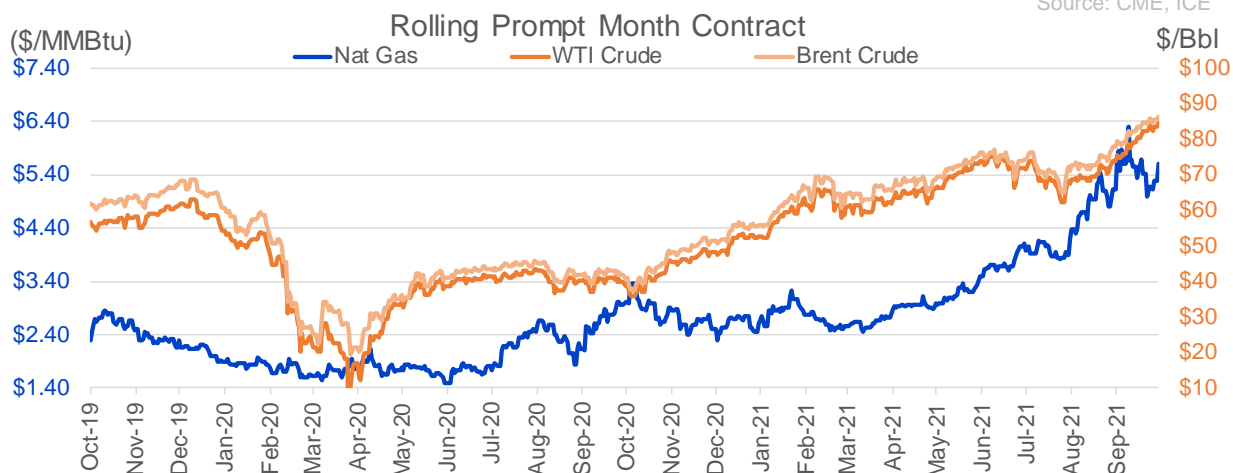
Nat Gas Options Volume and Open Interest CME, ICE and Nasdaq Combined

CONTRACT MONTH	CONTRACT YEAR	PUT/CALL	STRIKE	CUMULATIVE VOL	CONTRACT MONTH	CONTRACT YEAR	PUT/CALL	STRIKE	CUMULATIVE OI
11	2021	P	5.00	7073	12	2021	P	2.75	54317
1	2022	C	6.00	3626	12	2021	P	3.00	42318
11	2021	P	4.75	3434	12	2021	P	2.50	39421
11	2021	C	6.00	3414	12	2021	P	4.00	39207
11	2021	P	5.25	3300	12	2021	P	3.50	30523
11	2021	C	5.50	3286	11	2021	P	3.00	30166
11	2021	C	6.50	3269	3	2022	C	10.00	29207
12	2021	C	6.00	2208	11	2021	C	6.00	27190
1	2022	C	6.10	2202	11	2021	P	5.00	27045
12	2021	C	6.50	2165	11	2021	P	4.50	27039
1	2022	P	4.00	2102	11	2021	P	4.00	26914
11	2021	C	5.75	1948	11	2021	C	7.00	24940
11	2021	C	5.60	1856	3	2022	C	8.00	24784
1	2022	C	10.00	1798	12	2021	C	4.00	22527
1	2022	C	8.00	1653	3	2022	C	5.00	22368
11	2021	C	5.25	1423	11	2021	P	3.50	20148
11	2021	P	5.10	1246	11	2021	C	4.00	20144
1	2022	C	12.00	1088	1	2022	P	2.75	20007
11	2021	P	5.50	1071	4	2022	C	3.00	19760
1	2022	C	9.00	1068	1	2022	P	3.50	19416
1	2022	C	20.00	1002	1	2022	C	6.00	18806
3	2022	P	3.00	1000	3	2022	P	2.50	18386
12	2021	P	4.00	982	1	2022	P	3.00	18195
11	2021	C	5.30	914	3	2022	P	3.50	17900
2	2022	P	3.00	900	1	2022	C	5.00	17820
1	2023	P	3.00	800	12	2021	C	6.00	17679
2	2023	P	3.00	800	11	2021	C	5.00	17253
3	2023	P	3.00	800	12	2021	P	2.00	16879
4	2023	P	3.00	800	3	2022	P	4.00	16857
5	2023	P	3.00	800	2	2022	C	5.00	16814
6	2023	P	3.00	800	11	2021	C	5.50	16065
7	2023	P	3.00	800	12	2021	C	8.00	15799
8	2023	P	3.00	800	3	2022	C	4.00	15631
9	2023	P	3.00	800	4	2022	P	2.50	15489
10	2023	P	3.00	800	1	2022	P	4.00	15239
11	2023	P	3.00	800	12	2022	C	5.00	15182
12	2023	P	3.00	800	2	2022	P	3.50	15175
11	2021	P	4.80	794	11	2021	C	4.50	14922
3	2022	C	10.00	700	11	2021	P	4.75	14703
6	2022	C	5.00	700	12	2021	P	5.00	14650
6	2022	C	6.00	700	12	2021	C	7.00	14618
12	2022	P	3.00	700	4	2022	C	5.00	14529
7	2022	C	6.00	650	11	2021	P	2.50	14488
11	2021	C	5.40	637	11	2021	C	3.75	14478
11	2021	C	5.35	613	1	2022	C	4.00	14463
11	2021	P	5.30	608	11	2021	P	3.25	14311
1	2022	P	3.00	601	12	2021	P	4.50	13974
6	2022	P	3.00	600	2	2022	C	6.00	13698
1	2023	C	5.00	600	2	2022	P	4.00	13601
					11	2021	P	4.25	13378.75

Source: CME, ICE

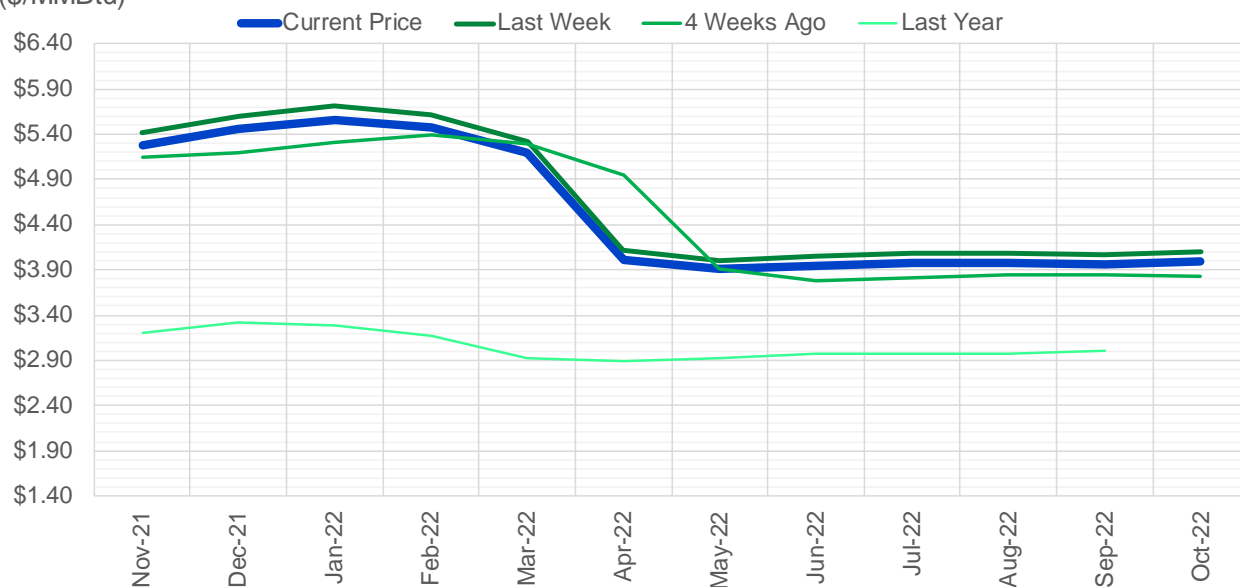
Nat Gas Futures Open Interest CME, and ICE Combined

CME Henry Hub Futures (10,000 MMBtu)				ICE Henry Hub Futures Contract Equivalent (10,000 MM			
	Current	Prior	Daily Change		Current	Prior	Daily Change
NOV 21	22286	34475	-12189	NOV 21	84781	85082	-301
DEC 21	168941	167177	1764	DEC 21	90622	89894	728
JAN 22	230946	232556	-1610	JAN 22	93599	92433	1166
FEB 22	72834	72552	282	FEB 22	69637	69540	97
MAR 22	152409	152248	161	MAR 22	76441	76275	165
APR 22	112963	113427	-464	APR 22	76583	75967	616
MAY 22	114018	113472	546	MAY 22	71125	70784	341
JUN 22	40739	40983	-244	JUN 22	54340	54043	297
JUL 22	38784	38566	218	JUL 22	57106	56699	407
AUG 22	29553	29279	274	AUG 22	55524	55325	199
SEP 22	32614	32624	-10	SEP 22	56639	56546	92
OCT 22	82156	81695	461	OCT 22	62013	61963	51
NOV 22	34507	34402	105	NOV 22	48844	48748	96
DEC 22	25699	25678	21	DEC 22	52099	52128	-29
JAN 23	29220	28960	260	JAN 23	39186	39145	41
FEB 23	10635	10516	119	FEB 23	32253	32160	93
MAR 23	16373	15956	417	MAR 23	34508	33958	550
APR 23	15527	14894	633	APR 23	35027	35014	13
MAY 23	9027	8747	280	MAY 23	34061	33849	212
JUN 23	7108	7062	46	JUN 23	30297	30085	212
JUL 23	4779	4881	-102	JUL 23	30470	30267	203
AUG 23	3901	3898	3	AUG 23	31471	31268	203
SEP 23	4733	4701	32	SEP 23	29502	29305	197
OCT 23	5915	5922	-7	OCT 23	33247	32984	263
NOV 23	3304	3299	5	NOV 23	32292	32250	42
DEC 23	4139	4135	4	DEC 23	28277	28232	44
JAN 24	1404	1386	18	JAN 24	16460	16421	39
FEB 24	1171	1166	5	FEB 24	13814	13788	25
MAR 24	4635	4631	4	MAR 24	18536	18489	47
APR 24	3502	3502	0	APR 24	12986	12901	85



(\$/MMBtu)

Nat Gas Term Structure



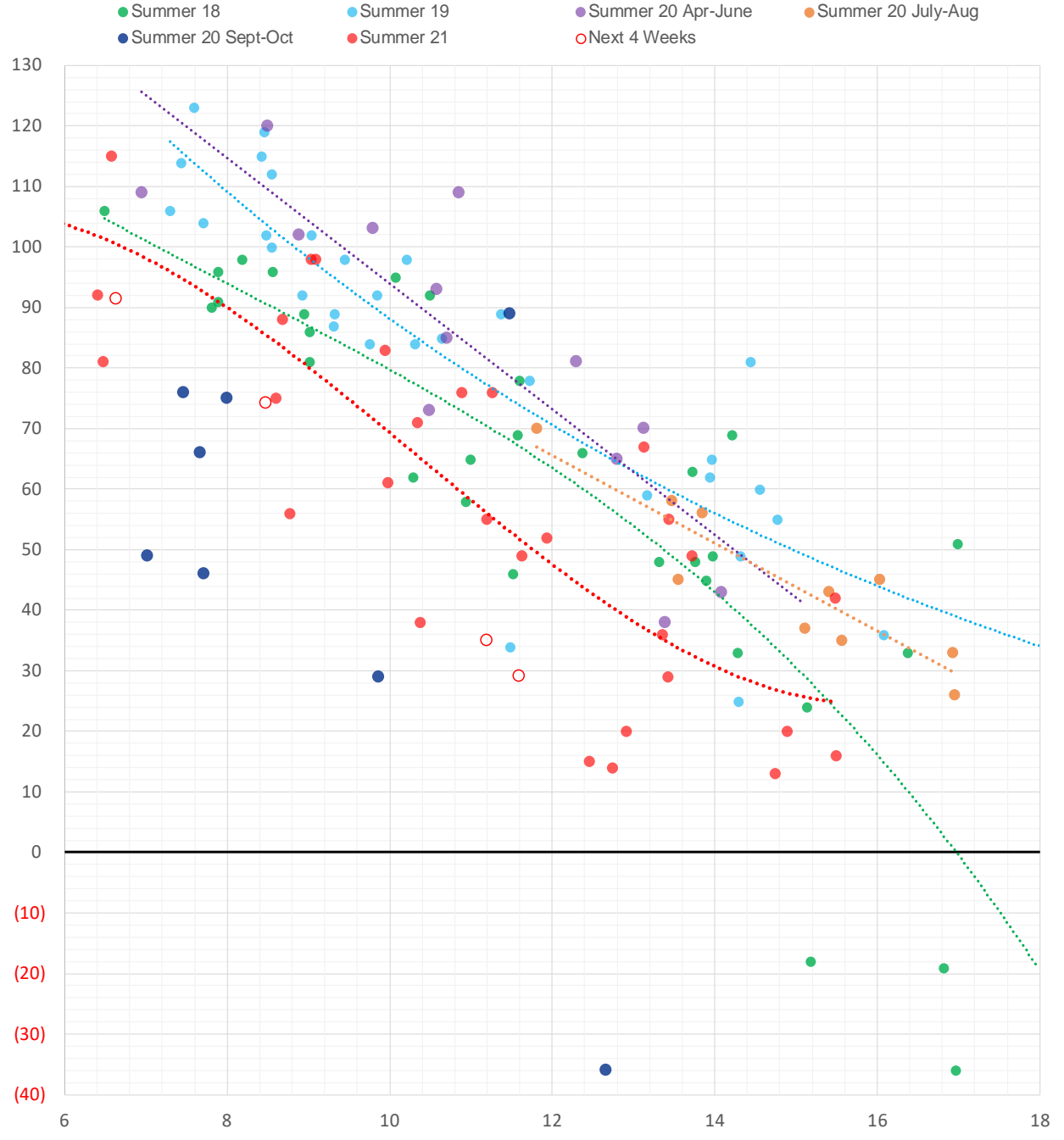
	Nov-21	Dec-21	Jan-22	Feb-22	Mar-22	Apr-22	May-22	Jun-22	Jul-22	Aug-22	Sep-22	Oct-22
Current Price	\$5.280	\$5.461	\$5.565	\$5.473	\$5.187	\$4.012	\$3.904	\$3.940	\$3.980	\$3.984	\$3.965	\$3.996
Last Week	\$5.410	\$5.600	\$5.708	\$5.613	\$5.317	\$4.121	\$4.008	\$4.046	\$4.087	\$4.091	\$4.073	\$4.104
vs. Last Week	-\$0.130	-\$0.139	-\$0.143	-\$0.140	-\$0.130	-\$0.109	-\$0.104	-\$0.106	-\$0.107	-\$0.107	-\$0.108	-\$0.108
4 Weeks Ago	\$5.140	\$5.200	\$5.315	\$5.391	\$5.289	\$4.949	\$3.905	\$3.775	\$3.805	\$3.847	\$3.852	\$3.831
vs. 4 Weeks Ago	\$0.140	\$0.261	\$0.250	\$0.082	-\$0.102	-\$0.937	-\$0.001	\$0.165	\$0.175	\$0.137	\$0.113	\$0.165
Last Year	\$2.971	\$3.195	\$3.322	\$3.285	\$3.175	\$2.927	\$2.892	\$2.924	\$2.966	\$2.979	\$2.968	\$3.004
vs. Last Year	\$2.309	\$2.266	\$2.243	\$2.188	\$2.012	\$1.085	\$1.012	\$1.016	\$1.014	\$1.005	\$0.997	\$0.992

	Units	Cash Settled	Prompt Settle	Cash to Prompt
AGT Citygate	\$/MMBtu	5.19	8.28	3.09
TETCO M3	\$/MMBtu	4.63	4.97	0.34
FGT Zone 3	\$/MMBtu	4.54	5.56	1.02
Zone 6 NY	\$/MMBtu	4.54	5.34	0.80
Chicago Citygate	\$/MMBtu	4.98	5.34	0.36
Michcon	\$/MMBtu	4.92	5.18	0.26
Columbia TCO Pool	\$/MMBtu	4.51	4.84	0.33
Ventura	\$/MMBtu	4.82	5.55	0.73
Rockies/Opal	\$/MMBtu	5.20	5.12	-0.09
El Paso Permian Basin	\$/MMBtu	4.63	5.10	0.47
Socal Citygate	\$/MMBtu	5.69	5.79	0.10
Malin	\$/MMBtu	5.01	5.63	0.62
Houston Ship Channel	\$/MMBtu	4.88	5.29	0.41
Henry Hub Cash	\$/MMBtu	5.08	5.21	0.13
AECO Cash	C\$/GJ	4.01	4.14	0.13
Station2 Cash	C\$/GJ	2.28	6.18	3.90
Dawn Cash	C\$/GJ	4.94	5.24	0.30

Source: CME, Bloomberg

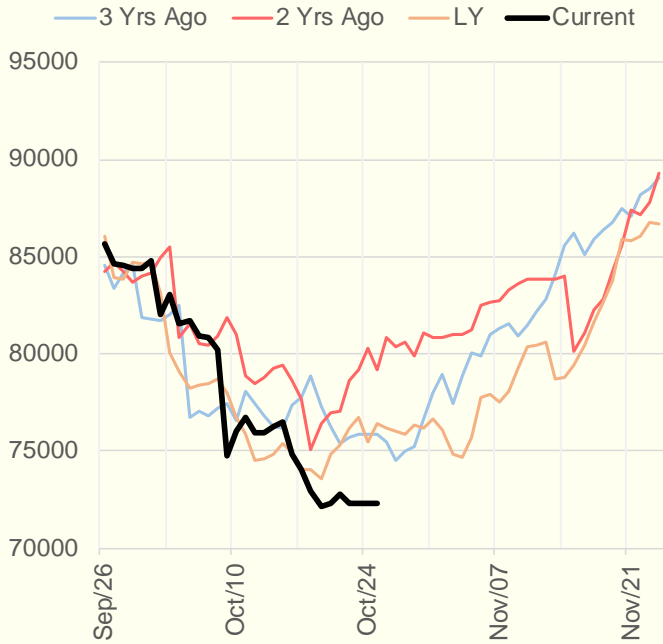
	Units	Current Price	vs. Last Week	vs. 4 Weeks Ago	vs. Last Year
NatGas Jul21/Oct21	\$/MMBtu	2.224	▲ 0.000	▲ 0.701	▲ 2.186
NatGas Oct21/Nov21	\$/MMBtu	-0.561	▼ -0.130	▼ -0.621	▼ -0.624
NatGas Oct21/Jan22	\$/MMBtu	-0.276	▼ -0.143	▼ -0.527	▼ -0.574
NatGas Apr22/Oct22	\$/MMBtu	-0.016	▲ 0.001	▲ 0.030	▼ -0.042
WTI Crude	\$/Bbl	83.76	▲ 1.480	▲ 9.780	▲ 43.910
Brent Crude	\$/Bbl	85.53	▲ 0.670	▲ 7.440	▲ 43.760
Fuel Oil, NY Harbour 1%	\$/Bbl	97.18	▲ 0.000	▲ 0.000	▲ 0.000
Heating Oil	cents/Gallon	253.89	▼ -3.480	▲ 27.180	▲ 138.760
Propane, Mt. Bel	cents/Gallon	1.45	▼ -0.025	▲ 0.177	▲ 0.929
Ethane, Mt. Bel	cents/Gallon	0.43	▼ -0.009	▲ 0.046	▲ 0.216
Coal, PRB	\$/MTon	12.30	▲ 0.000	▲ 0.000	▲ 0.000
Coal, PRB	\$/MMBtu	0.70			
Coal, ILB	\$/MTon	31.05	▲ 0.000	▲ 0.000	▲ 0.000
Coal, ILB	\$/MMBtu	1.32			

Weather Storage Model - Next 4 Week Forecast

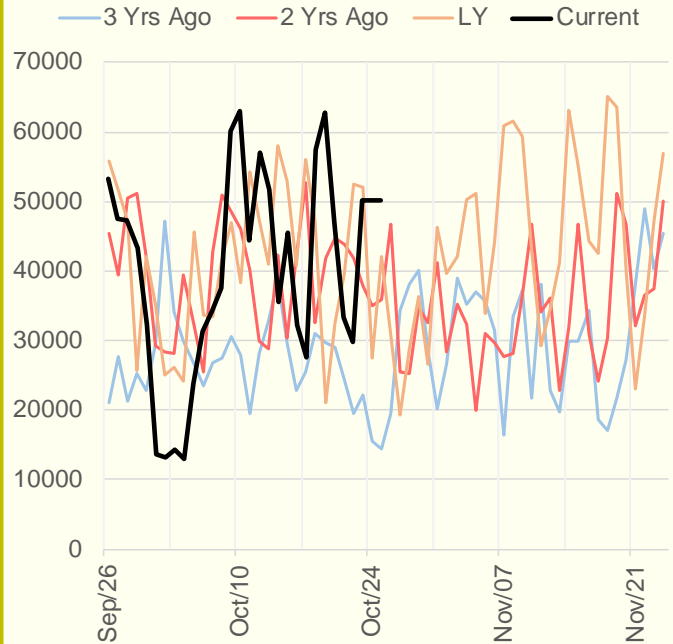


The risk of trading futures and options and other derivatives involves a substantial risk of loss and is not suitable for all persons. Each person must consider whether a particular trade, combination of trades, or strategy is suitable for that person's financial means and objectives. Past results are not necessarily indicative of future results. This communication may contain links to third party websites which are not under the control of and are not maintained by ION Energy Group, and ION Energy Group is not responsible for their content.

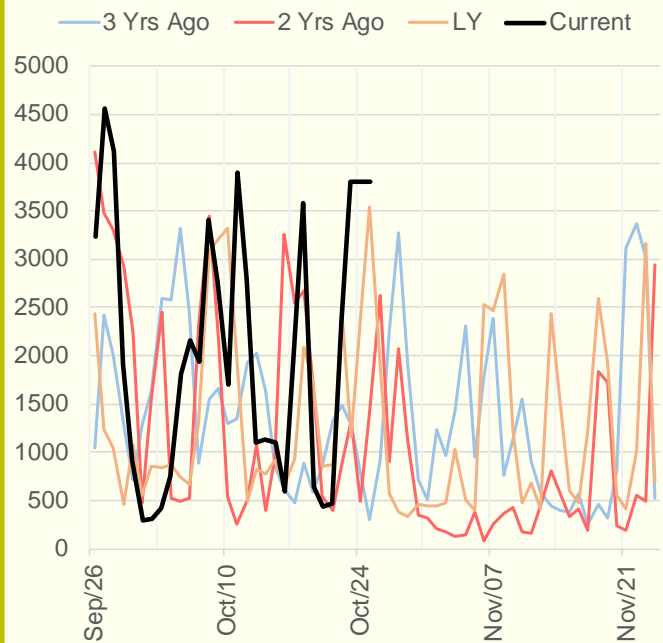
NRC Nuclear Daily Output



US Wind



CALI Wind



TEXAS Wind

