

	Current	Δ from YD	Δ from 7D Avg
Nat Gas Prompt	\$ 5.32 ▲	\$ 0.21 ▲	\$ 0.09

	Current	Δ from YD	Δ from 7D Avg
WTI Prompt	\$ 83.29 ▲	\$ 0.79 ▲	\$ 0.6

	Current	Δ from YD	Δ from 7D Avg
Brent Prompt	\$ 85.50 ▲	\$ 0.89 ▲	\$ 0.6

Page Menu

[Short-term Weather Model Outlooks](#)

[Lower 48 Component Models](#)

[Regional S/D Models Storage Projection](#)

[Weather Model Storage Projection](#)

[Supply – Demand Trends](#)

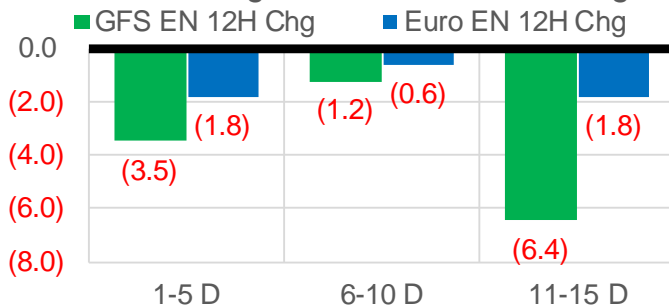
[Nat Gas Options Volume and Open Interest](#)

[Nat Gas Futures Open Interest](#)

[Price Summary](#)

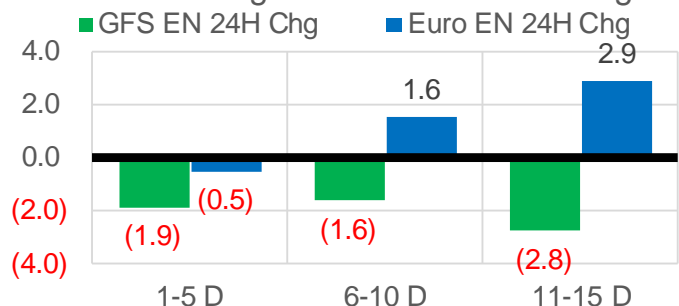
Vs. 12H Ago

L48 Region - 00z TDD vs 12H Ago



Vs. 24H Ago

L48 Region - 00z TDD vs 24H Ago



	Current	Δ from YD	Δ from 7D Avg
US Dry Production	91.3 ▼	-0.54 ▼	-0.96

	Current	Δ from YD	Δ from 7D Avg
US Power Burns	29.3 ▼	-1.43 ▼	0.36 ▲

	Current	Δ from YD	Δ from 7D Avg
US ResComm	15.9 ▲	2.91 ▲	2.08

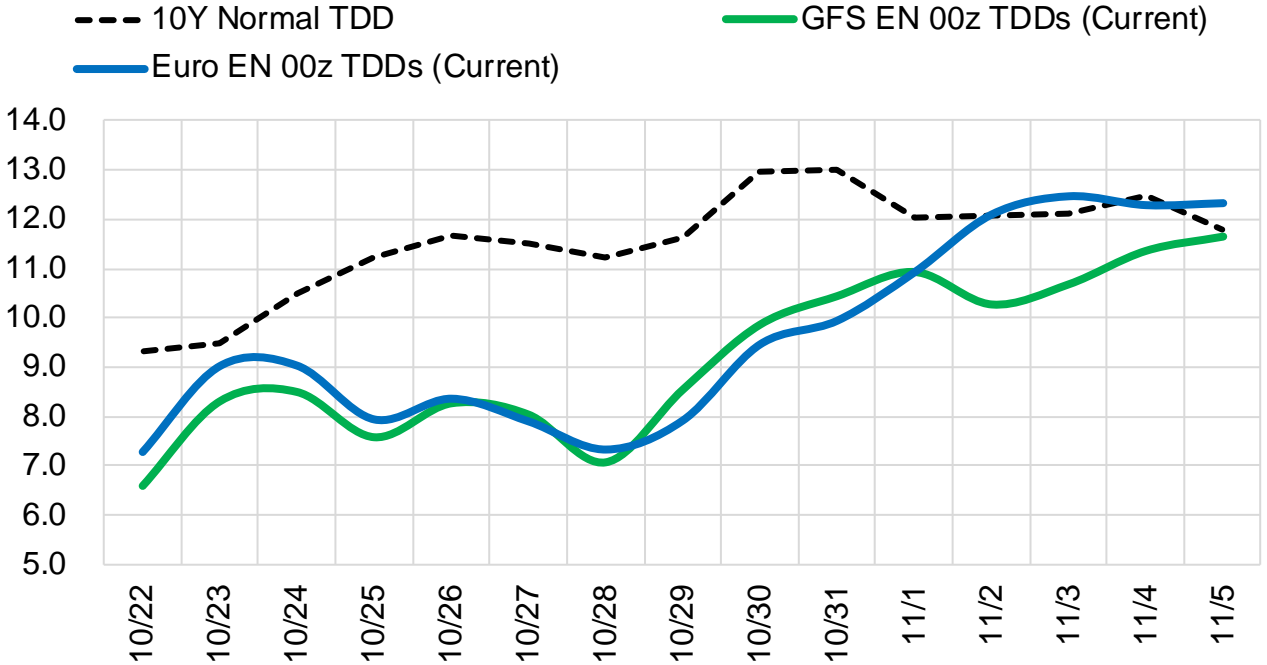
	Current	Δ from YD	Δ from 7D Avg
Canadian Imports	5.4 ▼	-0.20 ▼	-0.21

	Current	Δ from YD	Δ from 7D Avg
Net LNG Exports	10.5 ▼	-0.06 ▼	-0.33

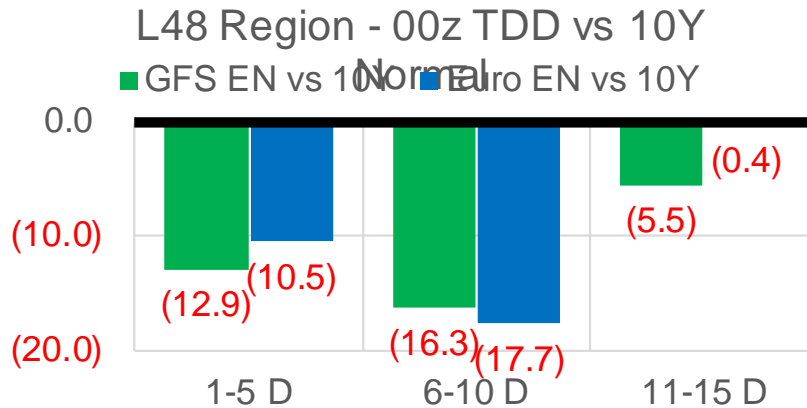
	Current	Δ from YD	Δ from 7D Avg
Mexican Exports	6.2 ▼	-0.49 ▼	-0.46

Short-term Weather Model Outlooks (00z)

L48 Region



Vs. 10Y Normal



Source: WSI , Bloomberg

Lower 48 Component Models

Daily Balances

	16-Oct	17-Oct	18-Oct	19-Oct	20-Oct	21-Oct	22-Oct	DoD	vs. 7D
Lower 48 Dry Production	92.2	92.8	92.9	91.9	91.4	91.9	91.3	▼ -0.5	▼ -0.8
Canadian Imports	5.6	5.6	5.5	5.7	5.5	5.6	5.4	▼ -0.2	▼ -0.2
L48 Power	27.0	27.0	28.2	28.4	29.5	30.7	29.3	▼ -1.4	▲ 0.8
L48 Residential & Commercial	13.1	15.6	16.6	14.9	11.9	13.0	15.9	▲ 2.9	▲ 1.7
L48 Industrial	18.7	18.6	18.3	17.9	17.8	18.2	18.6	▲ 0.4	▲ 0.4
L48 Lease and Plant Fuel	5.0	5.1	5.1	5.0	5.0	5.0	4.9	▼ -0.1	▼ -0.1
L48 Pipeline Distribution	2.1	2.3	2.4	2.3	2.2	2.3	2.4	▲ 0.1	▲ 0.1
L48 Regional Gas Consumption	66.1	68.6	70.6	68.5	66.5	69.2	71.1	▲ 1.9	▲ 2.9
Net LNG Delivered	11.19	10.64	11.09	10.87	10.16	10.51	10.45	▼ -0.1	▼ -0.3
Total Mexican Exports	6.6	6.1	6.5	6.7	6.6	6.6	6.2	▼ -0.5	▼ -0.4
Implied Daily Storage Activity	13.9	13.0	10.2	11.5	13.7	11.1	9.0		
EIA Reported Daily Storage Activity									
Daily Model Error									

EIA Storage Week Balances

	17-Sep	24-Sep	1-Oct	8-Oct	15-Oct	22-Oct	WoW	vs. 4W
Lower 48 Dry Production	92.0	93.0	93.3	92.9	92.6	92.3	▼ -0.3	▼ -0.6
Canadian Imports	5.0	5.2	5.7	5.3	4.9	5.6	▲ 0.6	▲ 0.3
L48 Power	35.0	33.3	30.3	32.9	31.7	28.9	▼ -2.8	▼ -3.1
L48 Residential & Commercial	7.1	8.1	8.4	8.1	9.5	13.8	▲ 4.3	▲ 5.3
L48 Industrial	20.8	20.6	20.1	21.9	19.7	18.3	▼ -1.4	▼ -2.3
L48 Lease and Plant Fuel	5.0	5.1	5.1	5.1	5.0	5.0	▼ 0.0	▼ 0.0
L48 Pipeline Distribution	2.3	2.3	2.1	2.2	2.2	2.3	▲ 0.1	▲ 0.1
L48 Regional Gas Consumption	70.3	69.3	66.0	70.1	68.2	68.3	▲ 0.1	▼ -0.1
Net LNG Exports	10.2	9.9	10.3	9.9	10.7	10.8	▲ 0.1	▲ 0.6
Total Mexican Exports	6.6	6.8	6.7	6.5	6.6	6.6	▼ 0.0	▼ 0.0
Implied Daily Storage Activity	9.9	12.2	16.0	11.6	12.0	12.1	0.1	
EIA Reported Daily Storage Activity	10.9	12.6	16.9	11.6	13.1			
Daily Model Error	-1.0	-0.4	-0.9	0.0	-1.1			

Monthly Balances

	2Yr Ago Oct-19	LY Oct-20	Jun-21	Jul-21	Aug-21	Sep-21	MTD Oct-21	MoM	vs. LY
Lower 48 Dry Production	95.1	88.3	93.3	93.3	92.5	92.3	92.5	▲ 0.2	▲ 4.2
Canadian Imports	4.6	4.3	4.9	5.2	5.1	5.1	5.3	▲ 0.1	▲ 1.0
L48 Power	30.3	30.8	35.9	39.4	40.2	33.1	31.1	▼ -2.1	▲ 0.3
L48 Residential & Commercial	15.3	15.3	8.8	8.1	7.7	7.6	10.7	▲ 3.1	▼ -4.5
L48 Industrial	23.5	22.6	20.5	20.9	20.3	20.2	19.9	▼ -0.3	▼ -2.7
L48 Lease and Plant Fuel	5.1	4.8	5.0	5.1	5.0	5.0	5.0	▼ 0.0	▲ 0.2
L48 Pipeline Distribution	2.4	2.5	2.4	2.5	2.5	2.2	2.2	▼ 0.0	▼ -0.2
L48 Regional Gas Consumption	76.6	75.9	72.7	76.0	75.8	68.2	69.0	▲ 0.8	▼ -6.9
Net LNG Exports	6.7	8.0	10.2	10.8	10.5	10.3	10.5	▲ 0.1	▲ 2.4
Total Mexican Exports	5.4	6.0	7.4	7.1	6.9	6.7	6.6	▼ -0.2	▲ 0.6
Implied Daily Storage Activity	11.1	2.7	7.8	4.6	4.5	12.2	11.7		
EIA Reported Daily Storage Activity									
Daily Model Error									

Source: Bloomberg, analytix.ai

Daily Average Generation Data

Nuclear Generation Daily Average - GWh (NRC)

	14-Oct	15-Oct	16-Oct	17-Oct	18-Oct	19-Oct	20-Oct	DoD	vs. 7D
NRC Nuclear Daily Output	76.2	76.5	74.8	74.0	72.9	72.2	72.3	0.1	-2.1
NRC Nuclear Max Capacity	104.9	104.9	104.9	104.9	104.9	104.9	104.9	0.0	0.0
NRC Nuclear Outage	28.6	28.4	30.1	30.9	31.9	32.7	32.6	-0.1	2.1
NRC % Nuclear Cap Utilization	77.5	77.8	76.1	75.3	74.2	73.4	73.5	0.1	-2.2

Wind Generation Daily Average - MWh (EIA)

	14-Oct	15-Oct	16-Oct	17-Oct	18-Oct	19-Oct	20-Oct	DoD	vs. 7D
CALI Wind	1127	1101	595	2072	3591	634	433	-202	-1087
TEXAS Wind	7415	12848	6423	8176	16053	17663	8536	-9127	-2893
US Wind	35572	45459	32133	27619	57421	62853	47019	-15834	3510

Generation Daily Average - MWh (EIA)

	14-Oct	15-Oct	16-Oct	17-Oct	18-Oct	19-Oct	20-Oct	DoD	vs. 7D
US Wind	35572	45459	32133	27619	57421	62853	47019	-15834	3510
US Solar	12097	11812	12795	12135	11164	11629	11502	-127	-437
US Petroleum	4133	3751	2841	2850	2744	2721	3224	503	51
US Other	12108	12387	10713	10813	11978	12050	11968	-82	293
US Coal	90800	86306	64885	62878	70083	69524	74625	5102	546
US Nuke	76915	76940	72769	73080	73626	73036	73384	348	-1011
US Hydro	23651	23812	20628	19712	22335	24522	24727	206	2284
US Gas	176554	167896	140834	124156	137233	141215	156981	15766	9000

See National Wind and Nuclear daily charts

Source: Bloomberg, analytix.ai

Storage Week Average Generation Data

Nuclear Generation Weekly Average - GWh (NRC)

	17-Sep	24-Sep	1-Oct	8-Oct	15-Oct	22-Oct	WoW	WoW Bcf/d Impact
NRC Nuclear Daily Output	86.7	85.9	85.1	82.1	76.5	73.6	-2.9	0.5
NRC Nuclear Max Capacity	104.9	104.9	104.9	104.9	104.9	104.9	0.0	
NRC Nuclear Outage	18.2	19.0	19.8	22.7	28.3	31.2	2.9	
NRC % Nuclear Cap Utilization	0.1	0.1	0.1	0.1	0.1	0.1	0.0	

Wind Generation Weekly Average - MWh (EIA)

	17-Sep	24-Sep	1-Oct	8-Oct	15-Oct	22-Oct	WoW	WoW Bcf/d Impact
CALI Wind	2083	1936	2467	1099	2400	1266	-1134	0.2
TEXAS Wind	9541	9780	10364	4890	15396	11176	-4220	0.8
US Wind	42378	43250	43478	20468	49917	45646	-4271	0.8
					29449.5			
					144%			

Generation Weekly Average - MWh (EIA)

	17-Sep	24-Sep	1-Oct	8-Oct	15-Oct	22-Oct	WoW	WoW Bcf/d Impact
US Wind	42378	43250	43478	20468	49917	45646	-4271	0.8
US Solar	14057	12185	12957	11295	10451	11791	1340	-0.2
US Petroleum	2470	2594	2712	3901	3224	3051	-174	0.0
US Other	9273	9121	8709	10972	12187	11697	-491	0.1
US Coal	115066	109062	94792	100713	89001	71847	-17154	3.1
US Nuke	89490	88789	88402	83696	77046	73746	-3300	0.6
US Hydro	24138	25340	25370	24518	24699	22923	-1776	0.3
US Gas	182116	175354	153813	176848	162345	146471	-15874	2.9

See National Wind and Nuclear daily charts

Source: Bloomberg, analytix.ai

Monthly Average Generation Data

Nuclear Generation Monthly Average - GWh (NRC)

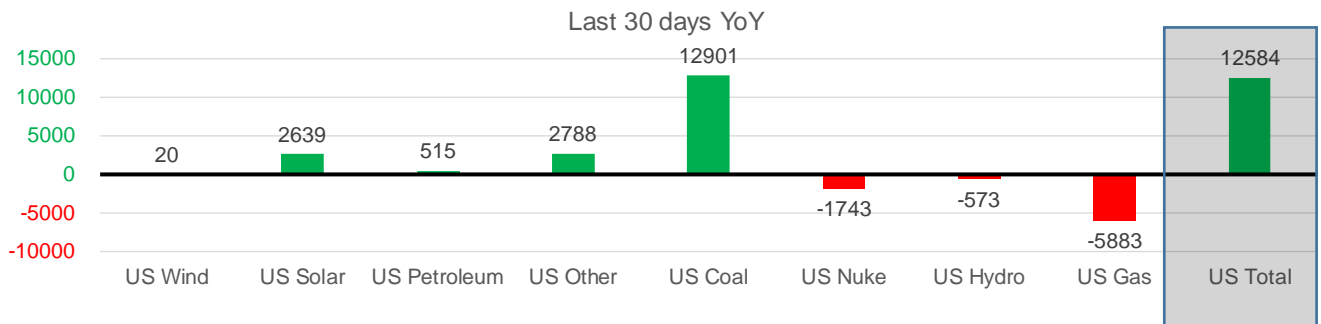
	2Yr Ago	LY	MTD				Last 30 days	MoM (MTD vs LY)	Last 30 days YoY
	Same 30 days	Same 30 days	Jul-21	Aug-21	Sep-21	Oct-21			
NRC Nuclear Daily Output	81.1	79.3	90.1	91.5	87.2	77.2	79.4	-10.0	0.1
NRC Nuclear Max Capacity	104.9	104.9	104.9	104.9	104.9	104.9	104.9	0.0	0.0
NRC Nuclear Outage	23.8	25.6	14.8	13.4	17.7	27.7	25.5	10.0	-0.1
NRC % Nuclear Cap Utilization	82.4	80.6	91.6	93.0	88.7	78.5	80.7	-10.1	0.1

Wind Generation Monthly Average - MWh (EIA)

	2Yr Ago	LY	MTD				Last 30 days	MoM (MTD vs LY)	Last 30 days YoY
	Same 30 days	Same 30 days	Jul-21	Aug-21	Sep-21	Oct-21			
CALI Wind	1673	1497	2338	2442	2020	1535	1754	-484	256
TEXAS Wind	9516	9856	7217	9901	9400	10399	10411	999	555
US Wind	39124	40265	29217	35830	40222	39056	40285	-1165	20

Generation Monthly Average - MWh (EIA)

	2Yr Ago	LY	MTD				Last 30 days	MoM (MTD vs LY)	Last 30 days YoY
	Same 30 days	Same 30 days	Jul-21	Aug-21	Sep-21	Oct-21			
US Wind	39124	40265	29217	35830	40222	39056	40285	▲ 1228.8	▲ 20
US Solar	8274	9010	14140	13787	13379	11194	11649	▲ 455.3	▲ 2639
US Petroleum	3924	2671	4233	4484	2452	3384	3187	▼ -197	▲ 515
US Other	8517	8065	9326	9928	9008	11634	10853	▼ -781	▲ 2788
US Coal	93175	75956	137228	137655	110037	86616	88858	▲ 2242	▲ 12901
US Nuke	87308	82525	92911	94062	90146	77945	80782	▲ 2837	▼ -1743
US Hydro	23209	25040	29941	28532	25661	24078	24467	▲ 390	▼ -573
US Gas	163980	165517	207823	210824	173536	161665	159634	▲ 6174	▼ -5883
US Total	427855	408959	524834	534937	464627	418039	421543	▲ 11118	▲ 12584



See National Wind and Nuclear daily charts

Source: Bloomberg, analytix.ai

Regional S/D Models Storage Projection

Week Ending 22-Oct

	Daily Raw Storage	Daily Adjustment Factor	Daily Average Storage Activity (Adjusted) *	Weekly Adjusted Storage Activity
L48	11.8	1.0	12.8	90
East	3.3	0.3	3.6	25
Midwest	3.3	-0.3	3.0	21
Mountain	3.4	-3.0	0.4	3
South Central	0.9	4.4	5.4	37
Pacific	0.9	-0.4	0.5	4

*Adjustment Factor is calculated based on historical regional deltas

U.S. underground natural gas storage facilities by type (July 2015)

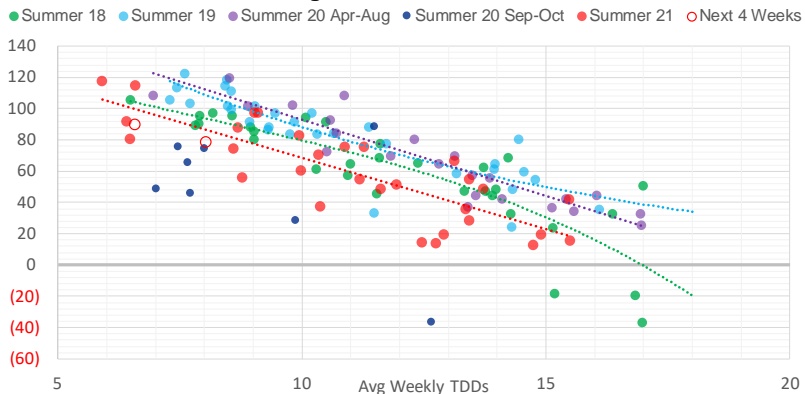


Weather Model Storage Projection

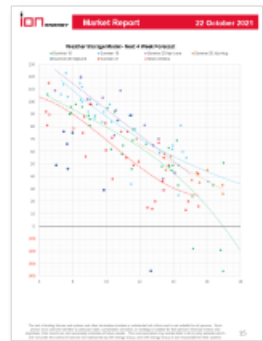
Next report
and beyond

Week Ending	GWDDs	Week Storage Projection
22-Oct	6.6	90
29-Oct	8.0	78
05-Nov	#N/A	#N/A
12-Nov	#N/A	#N/A

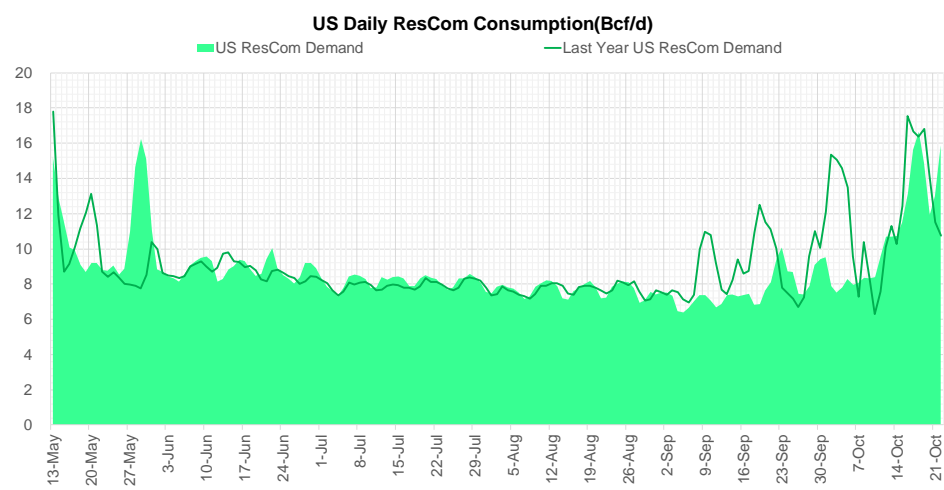
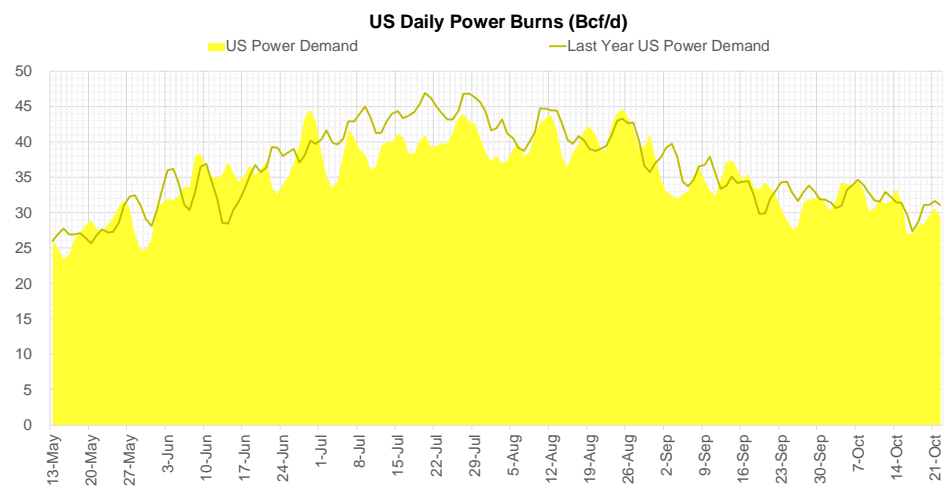
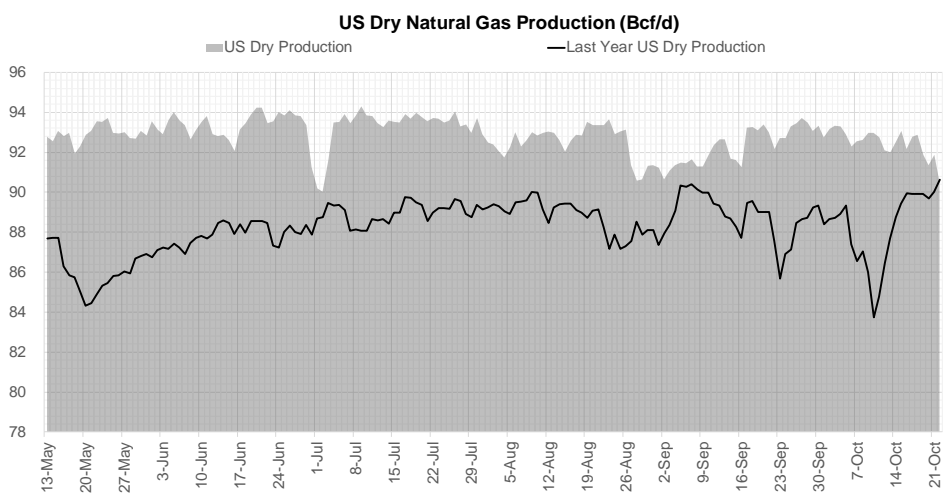
Weather Storage Model - Next 4 Week Forecast



Go to larger image



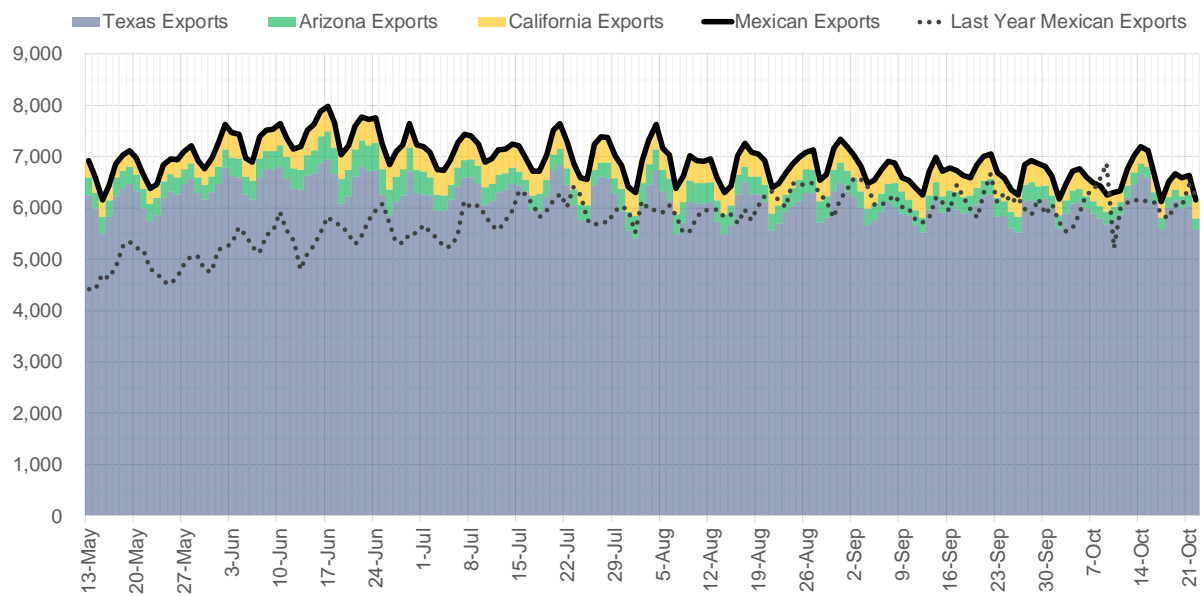
Supply – Demand Trends



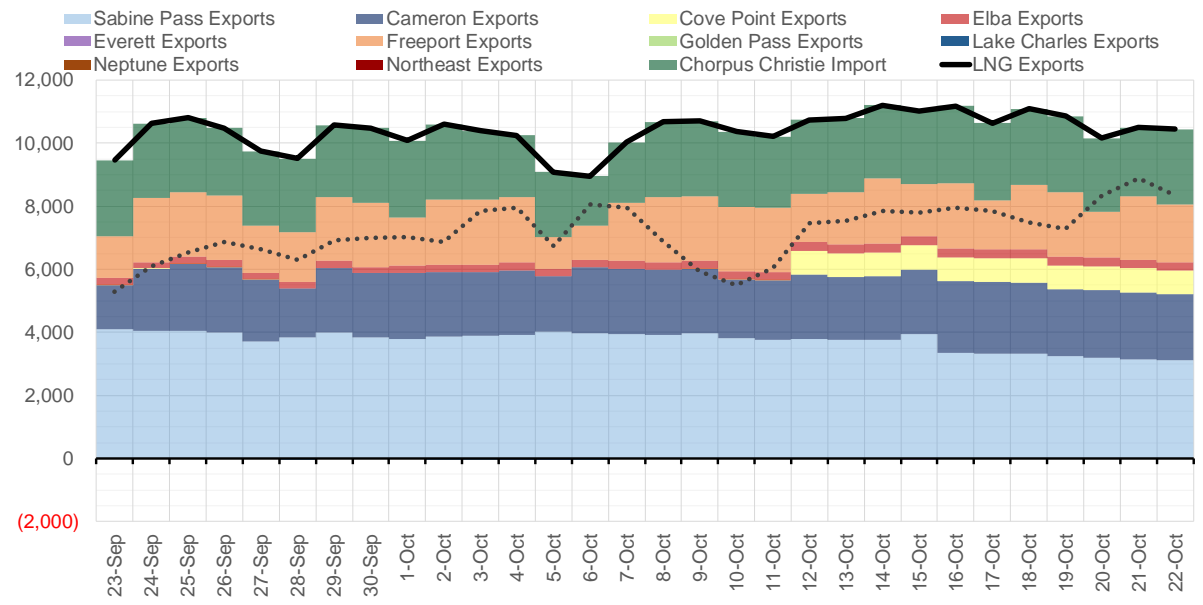
Source: Bloomberg

The risk of trading futures and options and other derivatives involves a substantial risk of loss and is not suitable for all persons. Each person must consider whether a particular trade, combination of trades, or strategy is suitable for that person's financial means and objectives. Past results are not necessarily indicative of future results. This communication may contain links to third party websites which are not under the control of and are not maintained by ION Energy Group, and ION Energy Group is not responsible for their content.

Mexican Exports (MMcf/d)



Net LNG Exports - Last 30 days (MMcf/d)



Source: Bloomberg

The risk of trading futures and options and other derivatives involves a substantial risk of loss and is not suitable for all persons. Each person must consider whether a particular trade, combination of trades, or strategy is suitable for that person's financial means and objectives. Past results are not necessarily indicative of future results. This communication may contain links to third party websites which are not under the control of and are not maintained by ION Energy Group, and ION Energy Group is not responsible for their content.

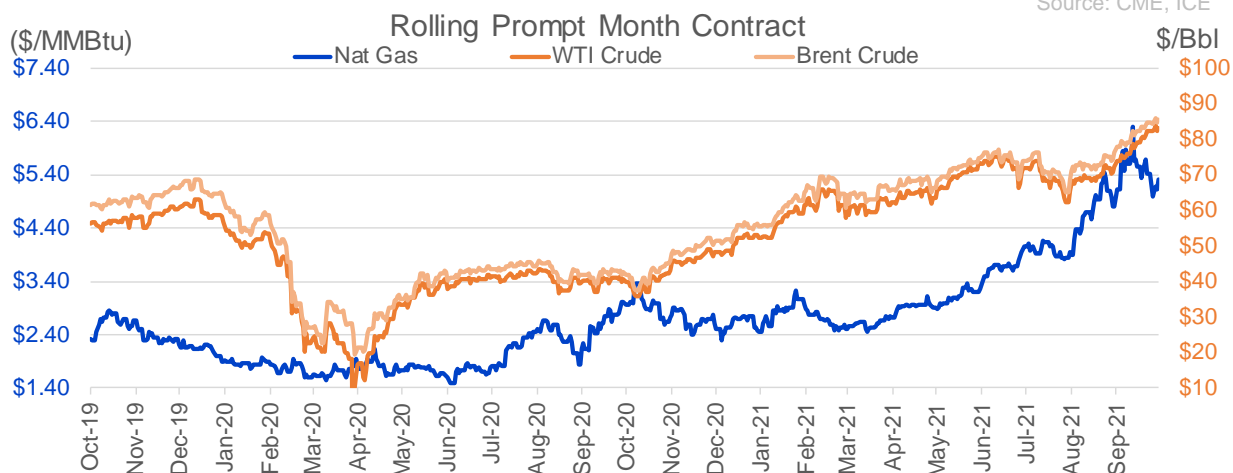
Nat Gas Options Volume and Open Interest CME, ICE and Nasdaq Combined

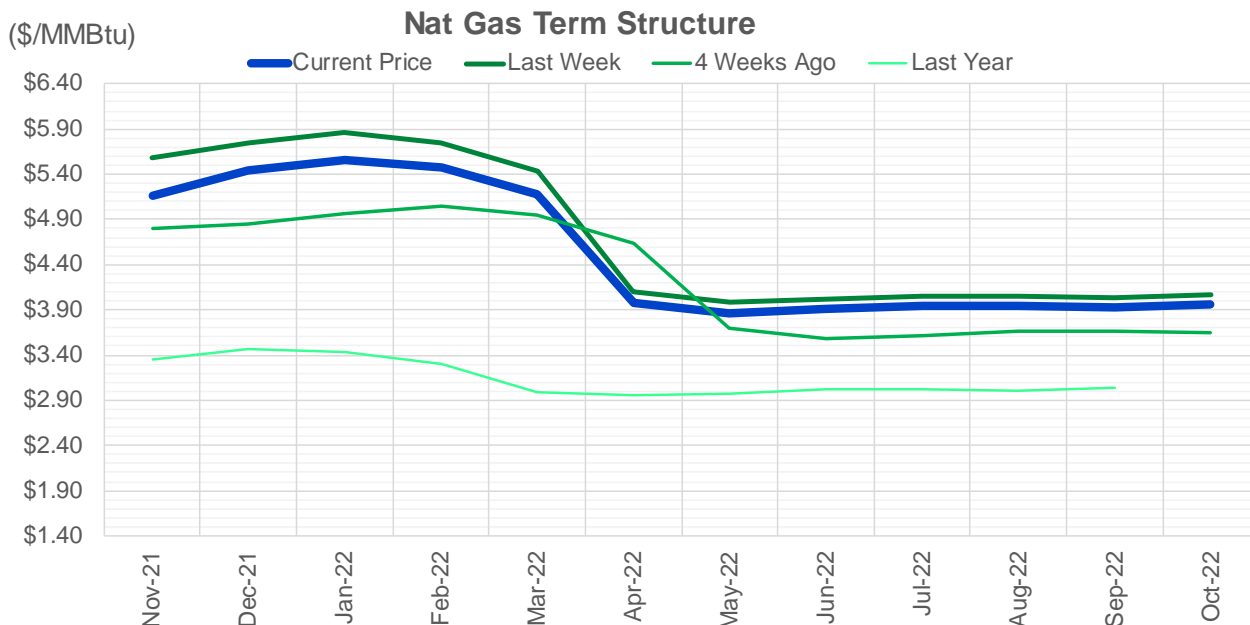
CONTRACT MONTH	CONTRACT YEAR	PUT/CALL	STRIKE	CUMULATIVE VOL	CONTRACT MONTH	CONTRACT YEAR	PUT/CALL	STRIKE	CUMULATIVE OI
11	2021	C	5.50	5262	12	2021	P	2.75	54042
11	2021	C	5.25	5009	12	2021	P	3.00	42318
11	2021	C	6.00	4928	12	2021	P	2.50	39421
11	2021	P	4.75	4835	12	2021	P	4.00	39230
11	2021	P	5.00	4201	12	2021	P	3.50	30492
12	2021	C	7.00	4058	11	2021	P	3.00	30166
2	2022	P	3.50	2950	3	2022	C	10.00	29132
12	2021	P	4.00	2843	11	2021	P	5.00	28641
1	2022	C	6.00	2378	11	2021	P	4.00	27654
1	2022	C	7.00	2351	11	2021	C	6.00	27253
2	2022	C	7.00	2002	11	2021	P	4.50	26958
11	2021	P	4.50	1920	11	2021	C	7.00	24995
12	2021	C	11.00	1856	3	2022	C	8.00	24785
1	2022	C	8.00	1751	12	2021	C	4.00	22527
11	2021	C	5.00	1734	3	2022	C	5.00	22350
12	2021	P	4.75	1733	11	2021	P	3.50	20150
12	2021	C	6.00	1699	11	2021	C	4.00	20144
1	2022	C	10.00	1604	1	2022	P	2.75	20007
6	2022	P	3.50	1600	4	2022	C	3.00	19760
12	2021	C	8.00	1572	1	2022	P	3.50	19466
2	2022	C	8.00	1550	1	2022	C	6.00	18688
4	2022	P	2.50	1355	3	2022	P	2.50	18386
1	2022	P	4.50	1351	1	2022	P	3.00	18154
5	2022	P	2.50	1350	12	2021	C	6.00	18149
12	2021	P	4.50	1343	3	2022	P	3.50	17825
11	2021	P	4.00	1327	1	2022	C	5.00	17820
11	2021	C	5.35	1256	11	2021	C	5.00	17264
10	2022	P	3.00	1251	2	2022	P	3.50	17225
7	2022	C	5.00	1200	3	2022	P	4.00	16887
11	2021	C	5.75	1150	12	2021	P	2.00	16879
2	2022	C	6.00	1150	2	2022	C	5.00	16764
3	2022	P	3.00	1150	11	2021	C	5.50	16634
4	2022	C	5.00	1125	12	2021	C	8.00	15743
5	2022	C	5.00	1100	3	2022	C	4.00	15631
6	2022	C	5.00	1100	4	2022	P	2.50	15486
8	2022	C	5.00	1100	11	2021	P	4.75	15393
9	2022	C	5.00	1100	1	2022	P	4.00	15279
10	2022	C	5.00	1100	12	2022	C	5.00	15232
1	2022	P	4.25	1059	11	2021	C	4.50	14922
1	2022	P	5.50	1020	12	2021	P	5.00	14668
1	2022	C	6.10	1003	4	2022	C	5.00	14654
6	2022	P	2.50	1000	12	2021	C	7.00	14592
7	2022	P	2.50	1000	11	2021	P	2.50	14488
8	2022	P	2.50	1000	11	2021	C	3.75	14478
9	2022	P	2.50	1000	1	2022	C	4.00	14463
10	2022	P	2.50	1000	11	2021	P	3.25	14311
4	2022	P	3.00	951	12	2021	P	4.50	14034
5	2022	P	3.00	951	2	2022	C	6.00	13605
6	2022	P	3.00	951	2	2022	P	4.00	13600
					3	2022	P	5	13402

Source: CME, ICE

Nat Gas Futures Open Interest CME, and ICE Combined

CME Henry Hub Futures (10,000 MMBtu)				ICE Henry Hub Futures Contract Equivalent (10,000 MM			
	Current	Prior	Daily Change		Current	Prior	Daily Change
NOV 21	34526	46379	-11853	NOV 21	85082	85656	-574
DEC 21	167185	164650	2535	DEC 21	89894	92140	-2246
JAN 22	232556	234435	-1879	JAN 22	92433	93129	-696
FEB 22	72553	70964	1589	FEB 22	69540	69511	29
MAR 22	152248	152693	-445	MAR 22	76275	76027	248
APR 22	113427	114307	-880	APR 22	75967	75880	87
MAY 22	113472	113577	-105	MAY 22	70784	70667	117
JUN 22	40983	40785	198	JUN 22	54043	54081	-38
JUL 22	38566	38492	74	JUL 22	56699	56547	152
AUG 22	29279	29345	-66	AUG 22	55325	55380	-55
SEP 22	32624	32599	25	SEP 22	56546	56554	-8
OCT 22	81695	80847	848	OCT 22	61963	61952	11
NOV 22	34402	34267	135	NOV 22	48748	48842	-95
DEC 22	25678	25330	348	DEC 22	52128	52160	-32
JAN 23	28960	28972	-12	JAN 23	39145	39023	123
FEB 23	10516	10528	-12	FEB 23	32160	32168	-8
MAR 23	15956	15771	185	MAR 23	33958	33843	115
APR 23	14894	14170	724	APR 23	35014	33056	1958
MAY 23	8747	8815	-68	MAY 23	33849	33443	406
JUN 23	7062	7080	-18	JUN 23	30085	30024	61
JUL 23	4881	4856	25	JUL 23	30267	30205	62
AUG 23	3898	3896	2	AUG 23	31268	30079	1189
SEP 23	4701	4445	256	SEP 23	29305	29229	76
OCT 23	5922	6169	-247	OCT 23	32984	32988	-5
NOV 23	3299	3329	-30	NOV 23	32250	31785	465
DEC 23	4135	4061	74	DEC 23	28232	28158	75
JAN 24	1386	1379	7	JAN 24	16421	16240	181
FEB 24	1166	1161	5	FEB 24	13788	13726	63
MAR 24	4631	4628	3	MAR 24	18489	18273	217
APR 24	3502	3502	0	APR 24	12901	12803	98





	Nov-21	Dec-21	Jan-22	Feb-22	Mar-22	Apr-22	May-22	Jun-22	Jul-22	Aug-22	Sep-22	Oct-22
Current Price	\$5.170	\$5.447	\$5.562	\$5.469	\$5.171	\$3.978	\$3.867	\$3.905	\$3.946	\$3.950	\$3.931	\$3.963
Last Week	\$5.590	\$5.753	\$5.854	\$5.750	\$5.429	\$4.098	\$3.977	\$4.011	\$4.052	\$4.058	\$4.042	\$4.072
vs. Last Week	-\$0.420	-\$0.306	-\$0.292	-\$0.281	-\$0.258	-\$0.120	-\$0.110	-\$0.106	-\$0.106	-\$0.108	-\$0.111	-\$0.109
4 Weeks Ago	\$4.805	\$4.855	\$4.969	\$5.042	\$4.952	\$4.628	\$3.696	\$3.578	\$3.612	\$3.657	\$3.663	\$3.643
vs. 4 Weeks Ago	\$0.365	\$0.592	\$0.593	\$0.427	\$0.219	-\$0.650	\$0.171	\$0.327	\$0.334	\$0.293	\$0.268	\$0.320
Last Year	\$3.023	\$3.348	\$3.471	\$3.427	\$3.304	\$2.996	\$2.953	\$2.980	\$3.016	\$3.024	\$3.011	\$3.046
vs. Last Year	\$2.147	\$2.099	\$2.091	\$2.042	\$1.867	\$0.982	\$0.914	\$0.925	\$0.930	\$0.926	\$0.920	\$0.917

	Units	Cash Settled	Prompt Settle	Cash to Prompt
AGT Citygate	\$/MMBtu	5.19	8.54	3.35
TETCO M3	\$/MMBtu	4.65	5.40	0.75
FGT Zone 3	\$/MMBtu	4.25	5.78	1.53
Zone 6 NY	\$/MMBtu	4.25	5.56	1.31
Chicago Citygate	\$/MMBtu	4.91	5.54	0.63
Michcon	\$/MMBtu	4.90	5.40	0.50
Columbia TCO Pool	\$/MMBtu	4.47	5.07	0.60
Ventura	\$/MMBtu	4.82	5.71	0.89
Rockies/Opal	\$/MMBtu	5.08	5.35	0.27
El Paso Permian Basin	\$/MMBtu	4.69	5.31	0.62
Socal Citygate	\$/MMBtu	6.00	6.13	0.13
Malin	\$/MMBtu	5.05	5.92	0.87
Houston Ship Channel	\$/MMBtu	4.90	5.51	0.61
Henry Hub Cash	\$/MMBtu	4.92	5.42	0.50
AECO Cash	C\$/GJ	4.11	4.40	0.29
Station2 Cash	C\$/GJ	0.84	6.50	5.66
Dawn Cash	C\$/GJ	4.85	5.46	0.61

Source: CME, Bloomberg

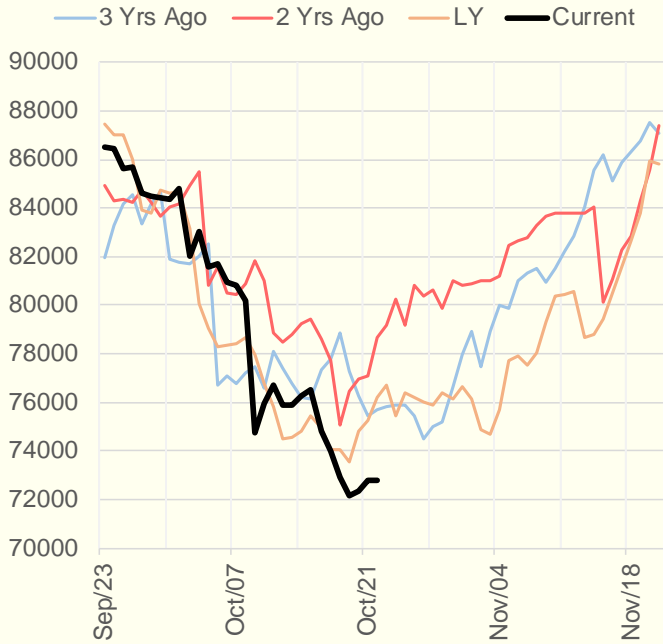
	Units	Current Price	vs. Last Week	vs. 4 Weeks Ago	vs. Last Year
NatGas Jul21/Oct21	\$/MMBtu	2.224	▲ 0.000	▲ 0.865	▲ 2.189
NatGas Oct21/Nov21	\$/MMBtu	-0.726	▼ -0.572	▼ -0.793	▼ -0.788
NatGas Oct21/Jan22	\$/MMBtu	-0.380	▼ -0.475	▼ -0.636	▼ -0.673
NatGas Apr22/Oct22	\$/MMBtu	-0.006	▲ 0.025	▲ 0.036	▼ -0.030
WTI Crude	\$/Bbl	82.50	▲ 1.190	▲ 9.200	▲ 41.860
Brent Crude	\$/Bbl	84.61	▲ 0.610	▲ 7.360	▲ 42.150
Fuel Oil, NY Harbour 1%	\$/Bbl	97.18	▲ 0.000	▲ 0.000	▲ 0.000
Heating Oil	cents/Gallon	254.91	▼ -1.230	▲ 30.000	▲ 138.840
Propane, Mt. Bel	cents/Gallon	1.46	▼ -0.007	▲ 0.181	▲ 0.935
Ethane, Mt. Bel	cents/Gallon	0.43	▼ -0.016	▲ 0.046	▲ 0.212
Coal, PRB	\$/MTon	12.30	▲ 0.000	▲ 0.000	▲ 0.000
Coal, PRB	\$/MMBtu	0.70			
Coal, ILB	\$/MTon	31.05	▲ 0.000	▲ 0.000	▲ 0.000
Coal, ILB	\$/MMBtu	1.32			

Weather Storage Model - Next 4 Week Forecast

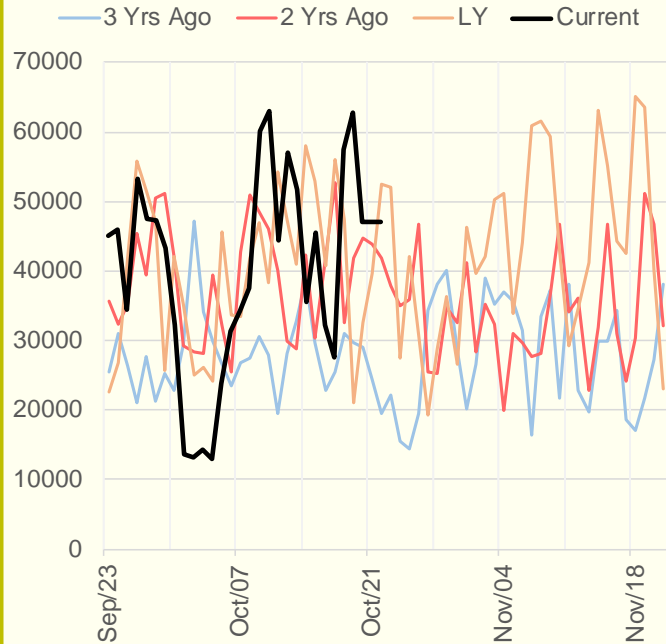


The risk of trading futures and options and other derivatives involves a substantial risk of loss and is not suitable for all persons. Each person must consider whether a particular trade, combination of trades, or strategy is suitable for that person's financial means and objectives. Past results are not necessarily indicative of future results. This communication may contain links to third party websites which are not under the control of and are not maintained by ION Energy Group, and ION Energy Group is not responsible for their content.

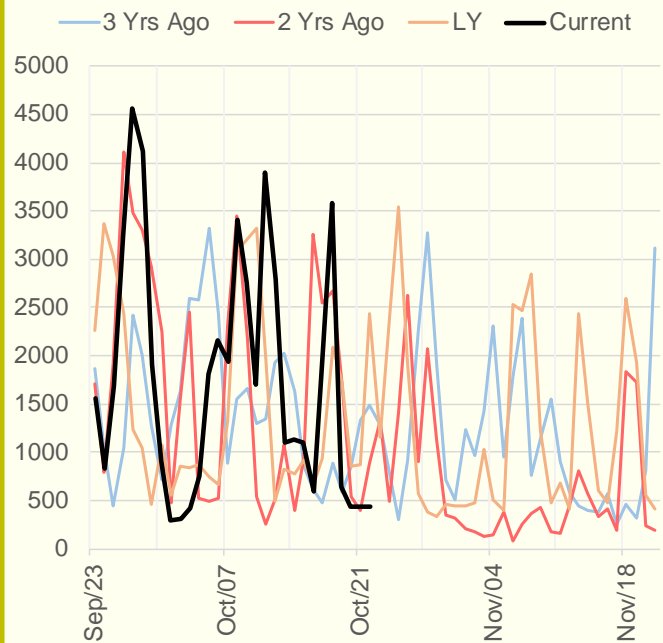
NRC Nuclear Daily Output



US Wind



CALI Wind



TEXAS Wind

