

	Current	Δ from YD	Δ from 7D Avg
Nat Gas Prompt	\$ 5.27	▼ \$ (0.14)	▼ \$ (0.21)

	Current	Δ from YD	Δ from 7D Avg
WTI Prompt	\$ 83.52	▲ \$ 1.24	▲ \$ 2.1

	Current	Δ from YD	Δ from 7D Avg
Brent Prompt	\$ 85.67	▲ \$ 0.81	▲ \$ 1.6

### Page Menu

[Short-term Weather Model Outlooks](#)

[Lower 48 Component Models](#)

[Regional S/D Models Storage Projection](#)

[Weather Model Storage Projection](#)

[Supply – Demand Trends](#)

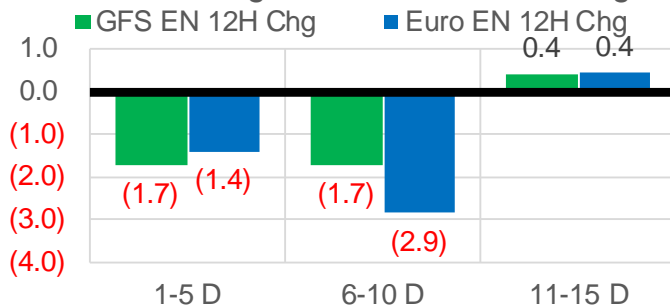
[Nat Gas Options Volume and Open Interest](#)

[Nat Gas Futures Open Interest](#)

[Price Summary](#)

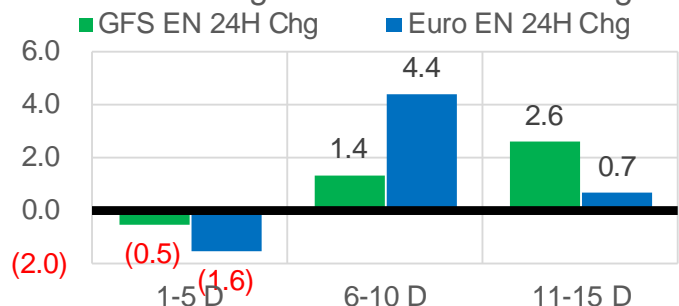
### Vs. 12H Ago

L48 Region - 00z TDD vs 12H Ago



### Vs. 24H Ago

L48 Region - 00z TDD vs 24H Ago



	Current	Δ from YD	Δ from 7D Avg
US Dry Production	92.3	▼ -0.10	▲ 0.13

	Current	Δ from YD	Δ from 7D Avg
US Power Burns	27.6	▲ 0.66	▼ -2.84

	Current	Δ from YD	Δ from 7D Avg
US ResComm	16.0	▲ 0.29	▲ 4.21

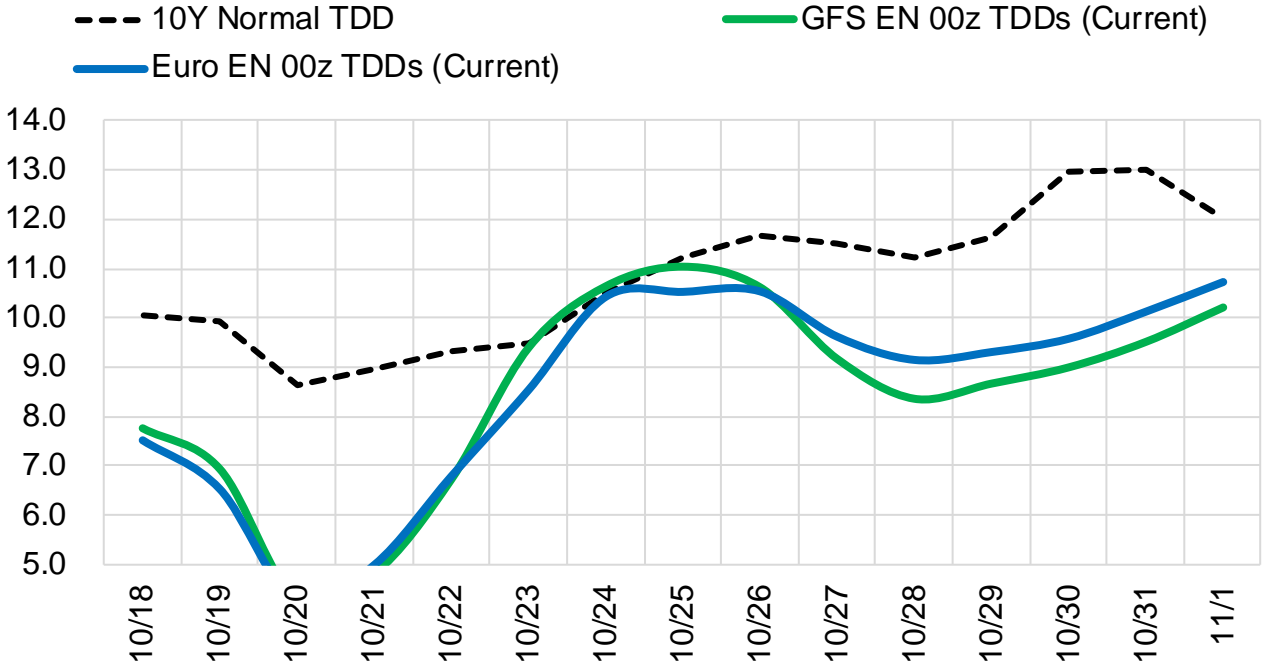
	Current	Δ from YD	Δ from 7D Avg
Canadian Imports	5.2	▼ -0.26	▲ 0.05

	Current	Δ from YD	Δ from 7D Avg
Net LNG Exports	11.1	▲ 0.38	▲ 0.23

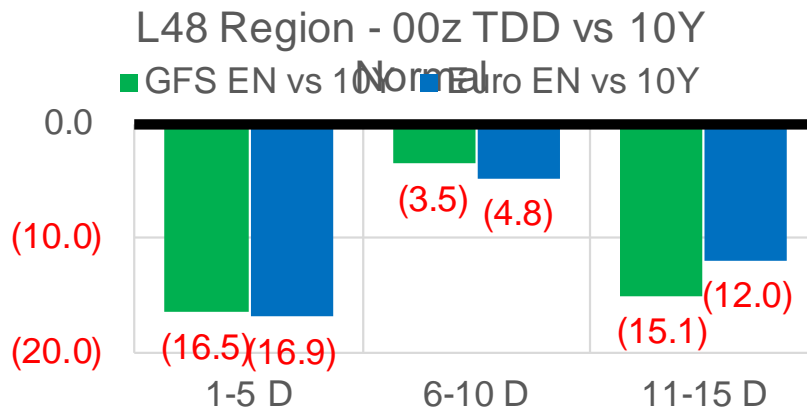
	Current	Δ from YD	Δ from 7D Avg
Mexican Exports	6.3	▲ 0.44	▼ -0.40

## Short-term Weather Model Outlooks (00z)

### L48 Region



### Vs. 10Y Normal



Source: WSI, Bloomberg

## Lower 48 Component Models

### Daily Balances

	12-Oct	13-Oct	14-Oct	15-Oct	16-Oct	17-Oct	18-Oct	DoD	vs. 7D
<b>Lower 48 Dry Production</b>	<b>91.9</b>	<b>91.8</b>	<b>92.3</b>	<b>92.7</b>	<b>91.7</b>	<b>92.4</b>	<b>92.3</b>	<b>-0.1</b>	<b>0.2</b>
<b>Canadian Imports</b>	<b>4.8</b>	<b>4.7</b>	<b>5.4</b>	<b>5.5</b>	<b>5.6</b>	<b>5.5</b>	<b>5.2</b>	<b>-0.3</b>	<b>0.0</b>
L48 Power	31.4	31.6	33.0	31.3	27.2	26.9	27.6	0.7	-2.6
L48 Residential & Commercial	10.8	10.8	10.8	11.6	13.3	15.7	16.0	0.3	3.8
L48 Industrial	19.8	19.6	19.4	19.2	19.1	18.9	18.6	-0.4	-0.8
L48 Lease and Plant Fuel	5.0	5.0	5.0	5.1	5.0	5.0	5.0	0.0	0.0
L48 Pipeline Distribution	2.2	2.3	2.3	2.3	2.2	2.3	2.3	0.1	0.1
<b>L48 Regional Gas Consumption</b>	<b>69.2</b>	<b>69.2</b>	<b>70.6</b>	<b>69.3</b>	<b>66.7</b>	<b>68.9</b>	<b>69.5</b>	<b>0.6</b>	<b>0.5</b>
<b>Net LNG Delivered</b>	<b>10.75</b>	<b>10.79</b>	<b>11.20</b>	<b>11.03</b>	<b>11.19</b>	<b>10.68</b>	<b>11.06</b>	<b>0.4</b>	<b>0.1</b>
<b>Total Mexican Exports</b>	<b>6.7</b>	<b>7.0</b>	<b>7.2</b>	<b>7.1</b>	<b>6.6</b>	<b>5.9</b>	<b>6.3</b>	<b>0.4</b>	<b>-0.5</b>
<b>Implied Daily Storage Activity</b>	<b>10.0</b>	<b>9.5</b>	<b>8.7</b>	<b>10.7</b>	<b>12.8</b>	<b>12.5</b>	<b>10.7</b>		
<b>EIA Reported Daily Storage Activity</b>									
<b>Daily Model Error</b>									

### EIA Storage Week Balances

	10-Sep	17-Sep	24-Sep	1-Oct	8-Oct	15-Oct	WoW	vs. 4W
<b>Lower 48 Dry Production</b>	<b>91.3</b>	<b>91.9</b>	<b>92.9</b>	<b>93.2</b>	<b>92.7</b>	<b>92.4</b>	<b>▼ -0.4</b>	<b>▼ -0.3</b>
<b>Canadian Imports</b>	<b>4.8</b>	<b>5.0</b>	<b>5.2</b>	<b>5.7</b>	<b>5.3</b>	<b>4.9</b>	<b>▼ -0.4</b>	<b>▼ -0.4</b>
L48 Power	33.8	35.0	33.2	30.3	32.8	31.6	▼ -1.2	▼ -1.2
L48 Residential & Commercial	6.9	7.1	8.1	8.4	12.4	9.6	-2.8	▲ 0.6
L48 Industrial	19.6	20.7	20.4	19.8	17.8	19.2	▲ 1.4	▼ -0.4
L48 Lease and Plant Fuel	5.0	5.0	5.1	5.1	5.1	5.0	▼ 0.0	▼ 0.0
L48 Pipeline Distribution	2.2	2.3	2.3	2.1	2.4	2.2	▼ -0.2	▼ -0.1
<b>L48 Regional Gas Consumption</b>	<b>67.5</b>	<b>70.2</b>	<b>69.0</b>	<b>65.6</b>	<b>70.4</b>	<b>67.7</b>	<b>▼ -2.7</b>	<b>▼ -1.1</b>
<b>Net LNG Exports</b>	<b>11.0</b>	<b>10.2</b>	<b>9.9</b>	<b>10.3</b>	<b>9.9</b>	<b>10.7</b>	<b>▲ 0.8</b>	<b>▲ 0.6</b>
<b>Total Mexican Exports</b>	<b>6.7</b>	<b>6.6</b>	<b>6.8</b>	<b>6.7</b>	<b>6.5</b>	<b>6.6</b>	<b>▲ 0.1</b>	<b>▼ 0.0</b>
<b>Implied Daily Storage Activity</b>	<b>10.9</b>	<b>9.8</b>	<b>12.3</b>	<b>16.2</b>	<b>11.1</b>	<b>12.3</b>	<b>1.1</b>	
<b>EIA Reported Daily Storage Activity</b>	<b>11.9</b>	<b>10.9</b>	<b>12.6</b>	<b>16.9</b>	<b>11.6</b>			
<b>Daily Model Error</b>	<b>-1.0</b>	<b>-1.0</b>	<b>-0.3</b>	<b>-0.6</b>	<b>-0.4</b>			

### Monthly Balances

	2Yr Ago Oct-19	LY Oct-20	Jun-21	Jul-21	Aug-21	Sep-21	MTD Oct-21	MoM	vs. LY
<b>Lower 48 Dry Production</b>	<b>95.1</b>	<b>88.3</b>	<b>93.3</b>	<b>93.3</b>	<b>92.4</b>	<b>92.2</b>	<b>92.4</b>	<b>▲ 0.3</b>	<b>▲ 4.1</b>
<b>Canadian Imports</b>	<b>4.6</b>	<b>4.3</b>	<b>4.9</b>	<b>5.2</b>	<b>5.1</b>	<b>5.1</b>	<b>5.2</b>	<b>▲ 0.1</b>	<b>▲ 0.9</b>
L48 Power	30.3	30.8	35.9	39.4	40.2	33.1	31.3	-1.8	▲ 0.6
L48 Residential & Commercial	15.3	15.3	8.8	8.1	7.7	7.6	11.7	▲ 4.1	▼ -3.6
L48 Industrial	23.5	22.6	20.5	20.9	20.2	20.0	18.6	-1.4	▼ -4.0
L48 Lease and Plant Fuel	5.1	4.8	5.0	5.1	5.0	5.0	5.0	▲ 0.0	▲ 0.2
L48 Pipeline Distribution	2.4	2.5	2.4	2.5	2.5	2.2	2.3	▲ 0.1	▼ -0.2
<b>L48 Regional Gas Consumption</b>	<b>76.6</b>	<b>75.9</b>	<b>72.7</b>	<b>76.0</b>	<b>75.7</b>	<b>68.0</b>	<b>69.0</b>	<b>▲ 0.9</b>	<b>-6.9</b>
<b>Net LNG Exports</b>	<b>6.7</b>	<b>8.0</b>	<b>10.2</b>	<b>10.8</b>	<b>10.5</b>	<b>10.3</b>	<b>10.4</b>	<b>▲ 0.1</b>	<b>▲ 2.4</b>
<b>Total Mexican Exports</b>	<b>5.4</b>	<b>6.0</b>	<b>7.4</b>	<b>7.1</b>	<b>6.9</b>	<b>6.7</b>	<b>6.6</b>	<b>▼ -0.2</b>	<b>▲ 0.6</b>
<b>Implied Daily Storage Activity</b>	<b>11.1</b>	<b>2.7</b>	<b>7.8</b>	<b>4.6</b>	<b>4.5</b>	<b>12.2</b>	<b>11.7</b>		
<b>EIA Reported Daily Storage Activity</b>									
<b>Daily Model Error</b>									

Source: Bloomberg, analytix.ai

## Daily Average Generation Data

### Nuclear Generation Daily Average - GWh (NRC)

	10-Oct	11-Oct	12-Oct	13-Oct	14-Oct	15-Oct	16-Oct	DoD	vs. 7D
NRC Nuclear Daily Output	76.0	76.7	75.9	75.9	76.2	76.5	76.5	0.0	0.3
NRC Nuclear Max Capacity	104.9	104.9	104.9	104.9	104.9	104.9	104.9	0.0	0.0
NRC Nuclear Outage	28.9	28.2	29.0	29.0	28.6	28.4	28.4	0.0	-0.3
NRC % Nuclear Cap Utilization	77.3	78.0	77.2	77.2	77.5	77.8	77.8	0.0	0.3

### Wind Generation Daily Average - MWh (EIA)

	10-Oct	11-Oct	12-Oct	13-Oct	14-Oct	15-Oct	16-Oct	DoD	vs. 7D
CALI Wind	1700	3903	2794	1106	1127	1101	595	-506	-1360
TEXAS Wind	20964	10073	21150	13680	7415	12848	6423	-6425	-7932
US Wind	63091	44491	56956	51697	35572	45319	37937	-7382	-11584

### Generation Daily Average - MWh (EIA)

	10-Oct	11-Oct	12-Oct	13-Oct	14-Oct	15-Oct	16-Oct	DoD	vs. 7D
US Wind	63091	44491	56956	51697	35572	45319	37937	-7382	-11584
US Solar	10479	10382	8638	10394	12096	11812	12829	1017	2196
US Petroleum	2684	3104	3191	3541	4133	3899	2867	-1032	-558
US Other	11837	12105	12018	11892	12096	12372	10773	-1599	-1281
US Coal	83087	92217	88611	86198	90800	86306	75450	-10856	-12420
US Nuke	76472	76799	76459	76904	76915	76940	74714	-2226	-2034
US Hydro	22870	25313	26069	24493	23638	20876	21540	664	-2336
<b>US Gas</b>	<b>143399</b>	<b>163580</b>	<b>159208</b>	<b>168864</b>	<b>176533</b>	<b>167604</b>	<b>145224</b>	<b>-22380</b>	<b>-17974</b>

See National Wind and Nuclear daily charts

Source: Bloomberg, analytix.ai

## Storage Week Average Generation Data

### Nuclear Generation Weekly Average - GWh (NRC)

	10-Sep	17-Sep	24-Sep	1-Oct	8-Oct	15-Oct	WoW	WoW Bcf/d Impact
NRC Nuclear Daily Output	90.3	86.7	85.9	85.1	82.1	76.5	-5.6	1.0
NRC Nuclear Max Capacity	104.9	104.9	104.9	104.9	104.9	104.9	0.0	
NRC Nuclear Outage	14.6	18.2	19.0	19.8	22.7	28.3	5.6	
NRC % Nuclear Cap Utilization	0.1	0.1	0.1	0.1	0.1	0.1	0.0	

### Wind Generation Weekly Average - MWh (EIA)

	10-Sep	17-Sep	24-Sep	1-Oct	8-Oct	15-Oct	WoW	WoW Bcf/d Impact
CALI Wind	1236	2083	1936	2467	1099	2400	1301	-0.2
TEXAS Wind	7327	9541	9780	10364	4890	15396	10506	-1.9
US Wind	30662	42378	43250	43451	20468	49917	29449	-5.3
					-22983.3			
					-53%			

### Generation Weekly Average - MWh (EIA)

	10-Sep	17-Sep	24-Sep	1-Oct	8-Oct	15-Oct	WoW	WoW Bcf/d Impact
US Wind	30662	42378	43250	43451	20468	49917	29449	<b>-5.3</b>
US Solar	14254	14057	12185	12957	11295	10168	-1127	<b>0.2</b>
US Petroleum	2072	2470	2594	2712	3901	3224	-677	<b>0.1</b>
US Other	8932	9273	9121	8709	10972	12027	1056	-0.2
US Coal	116993	115066	109062	94776	100713	89001	-11712	2.1
US Nuke	93162	89490	88789	88402	83696	77046	-6650	<b>1.2</b>
US Hydro	26944	24138	25340	25279	24518	24686	169	0.0
<b>US Gas</b>	<b>181094</b>	<b>182116</b>	<b>175354</b>	<b>153814</b>	<b>176848</b>	<b>162195</b>	<b>-14653</b>	2.6

See National Wind and Nuclear daily charts

Source: Bloomberg, analytix.ai

## Monthly Average Generation Data

### Nuclear Generation Monthly Average - GWh (NRC)

	2Yr Ago	LY	MTD						
	Same 30 days	Same 30 days	Jul-21	Aug-21	Sep-21	Oct-21	Last 30 days	MoM (MTD vs LY)	Last 30 days YoY
NRC Nuclear Daily Output	82.4	80.9	90.1	91.5	87.2	78.7	81.4	-8.5	0.5
NRC Nuclear Max Capacity	104.9	104.9	104.9	104.9	104.9	104.9	104.9	0.0	0.0
NRC Nuclear Outage	22.5	24.0	14.8	13.4	17.7	26.2	23.4	8.5	-0.5
NRC % Nuclear Cap Utilization	83.8	82.3	91.6	93.0	88.7	80.0	82.8	-8.6	0.5

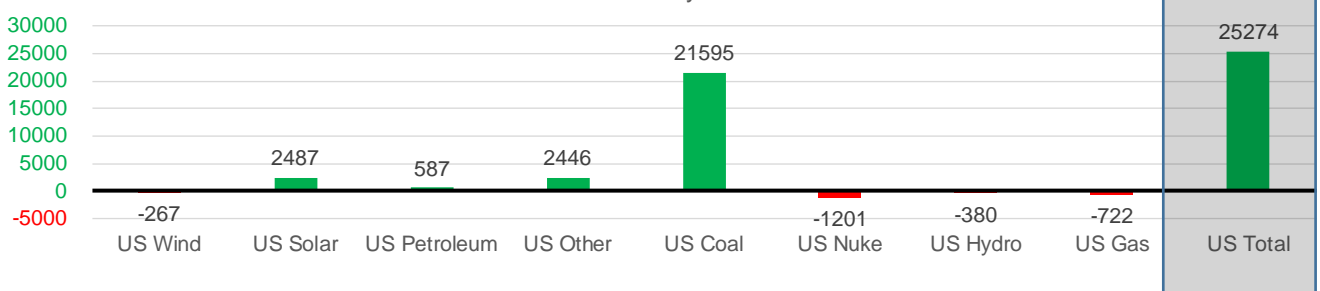
### Wind Generation Monthly Average - MWh (EIA)

	2Yr Ago	LY	MTD						
	Same 30 days	Same 30 days	Jul-21	Aug-21	Sep-21	Oct-21	Last 30 days	MoM (MTD vs LY)	Last 30 days YoY
CALI Wind	1723	1496	2338	2442	2020	1521	1796	-499	299
TEXAS Wind	9472	9048	7217	9901	9400	9673	10028	274	980
US Wind	37762	39894	29217	35830	40215	36213	39627	-4003	-267

### Generation Monthly Average - MWh (EIA)

	2Yr Ago	LY	MTD						
	Same 30 days	Same 30 days	Jul-21	Aug-21	Sep-21	Oct-21	Last 30 days	MoM (MTD vs LY)	Last 30 days YoY
US Wind	37762	39894	29217	35830	40215	36213	39627	▲ 3414.5	▼ -267
US Solar	8504	9268	14140	13787	13379	11141	11755	▲ 613.9	▲ 2487
US Petroleum	4018	2555	4233	4484	2452	3465	3142	▼ -323	▲ 587
US Other	8365	7945	9326	9928	9008	11427	10391	▼ -1036	▲ 2446
US Coal	97936	72863	137228	137655	110033	91148	94458	▲ 3310	▲ 21595
US Nuke	88625	84223	92911	94062	90146	79237	83022	▲ 3784	▼ -1201
US Hydro	23611	24885	29941	28532	25639	23885	24505	▲ 620	▼ -380
<b>US Gas</b>	<b>167329</b>	<b>164175</b>	<b>207823</b>	<b>210824</b>	<b>173536</b>	<b>165365</b>	<b>163453</b>	▲ 10383	▼ -722
<b>US Total</b>	<b>436552</b>	<b>405805</b>	<b>524834</b>	<b>534937</b>	<b>464619</b>	<b>423007</b>	<b>431079</b>	▲ 17352	▲ 25274

Last 30 days YoY



See National Wind and Nuclear daily charts

Source: Bloomberg, analytix.ai

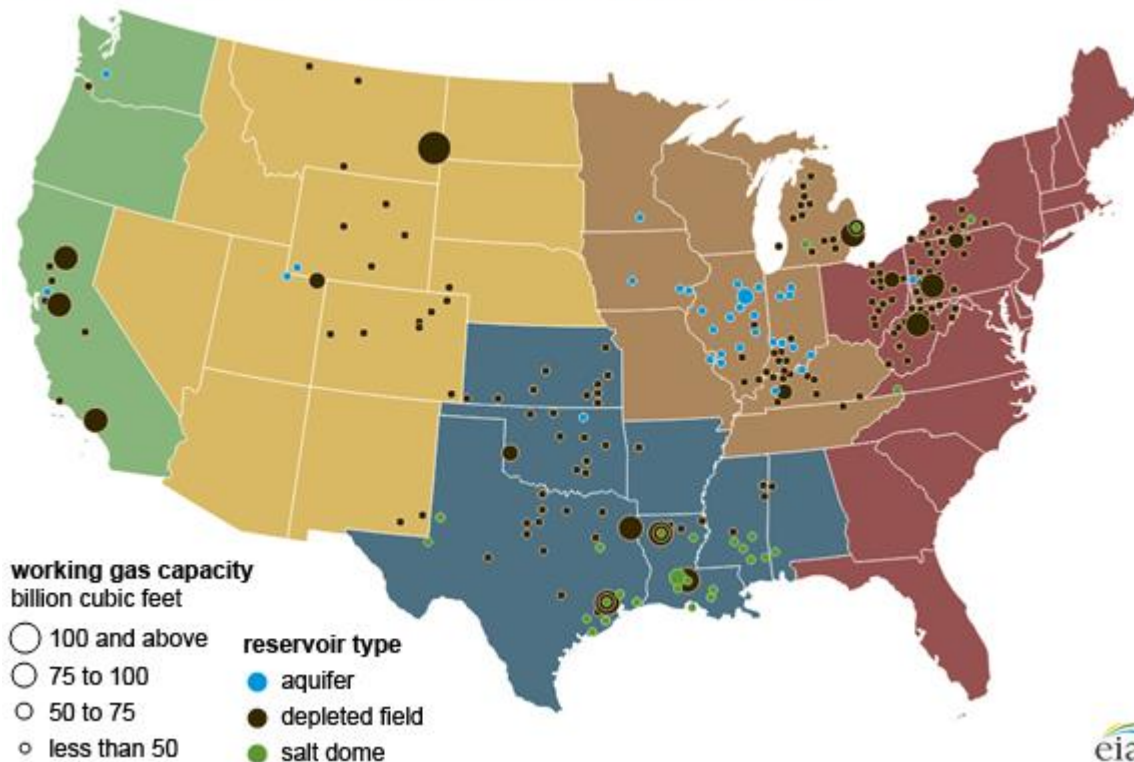
## Regional S/D Models Storage Projection

Week Ending 15-Oct

	Daily Raw Storage	Daily Adjustment Factor	Daily Average Storage Activity (Adjusted) *	Weekly Adjusted Storage Activity
L48	12.0	0.9	12.9	90
East	4.2	0.9	5.1	36
Midwest	4.4	-0.3	4.2	29
Mountain	3.1	-3.2	-0.1	0
South Central	-0.4	4.1	3.7	26
Pacific	0.6	-0.6	-0.1	-1

\*Adjustment Factor is calculated based on historical regional deltas

U.S. underground natural gas storage facilities by type (July 2015)

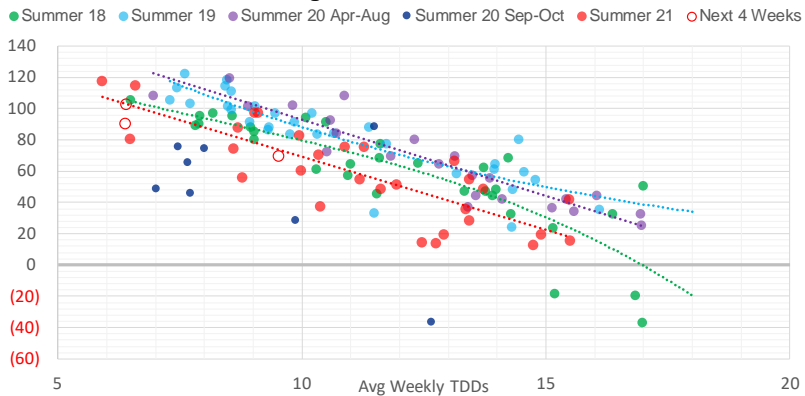


## Weather Model Storage Projection

Next report  
and beyond

Week Ending	GWDDs	Week Storage Projection
15-Oct	6.4	90
22-Oct	6.4	103
29-Oct	9.5	69
05-Nov	#N/A	#N/A

**Weather Storage Model - Next 4 Week Forecast**

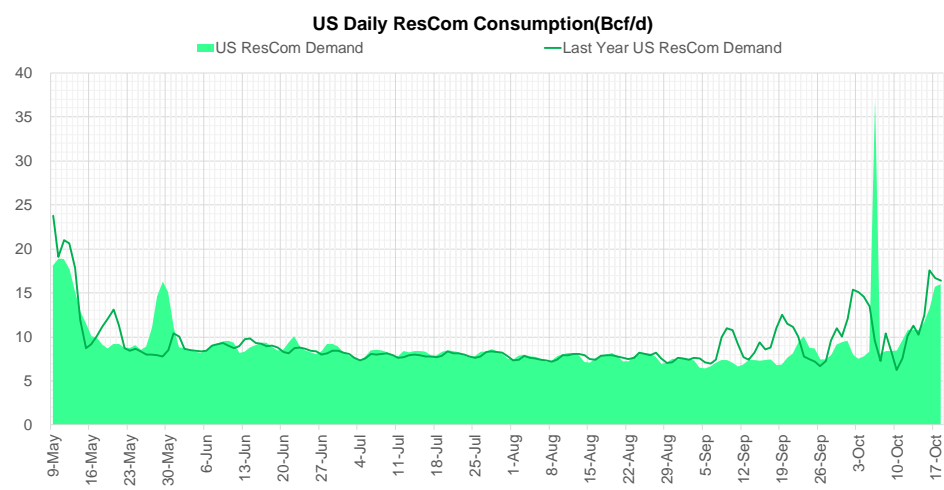
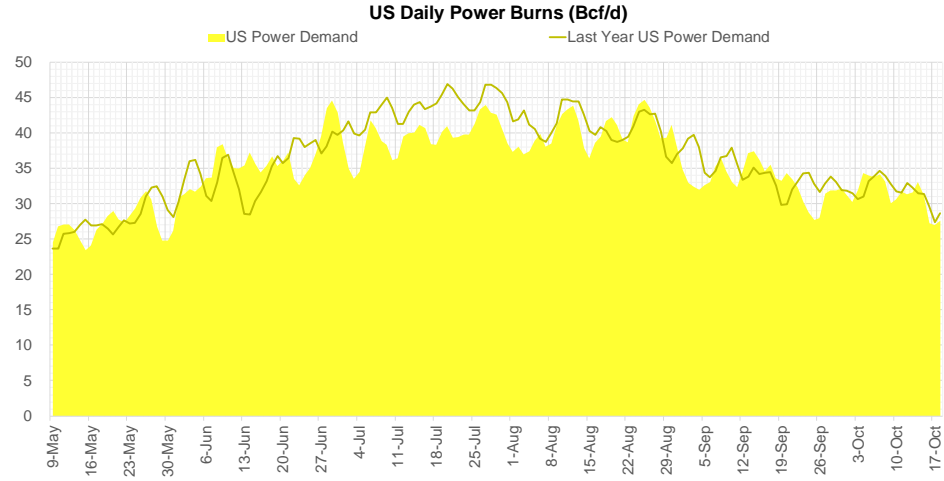
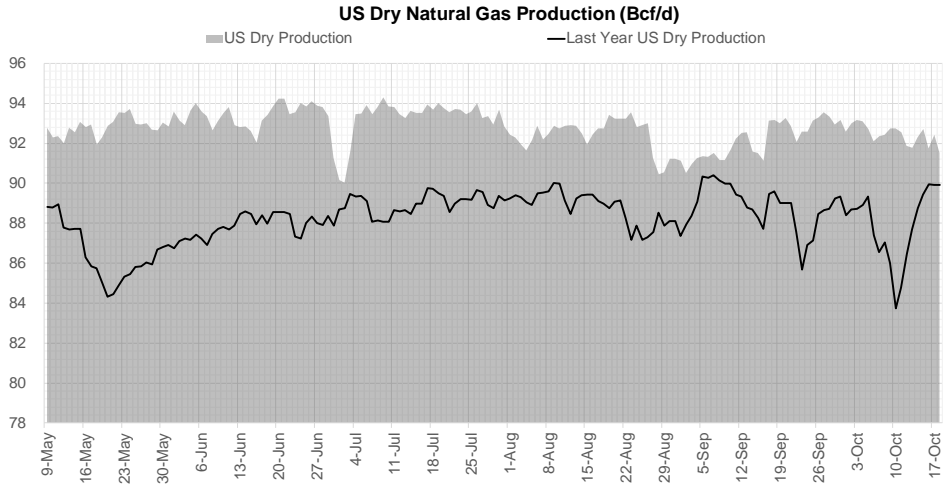


Go to larger image





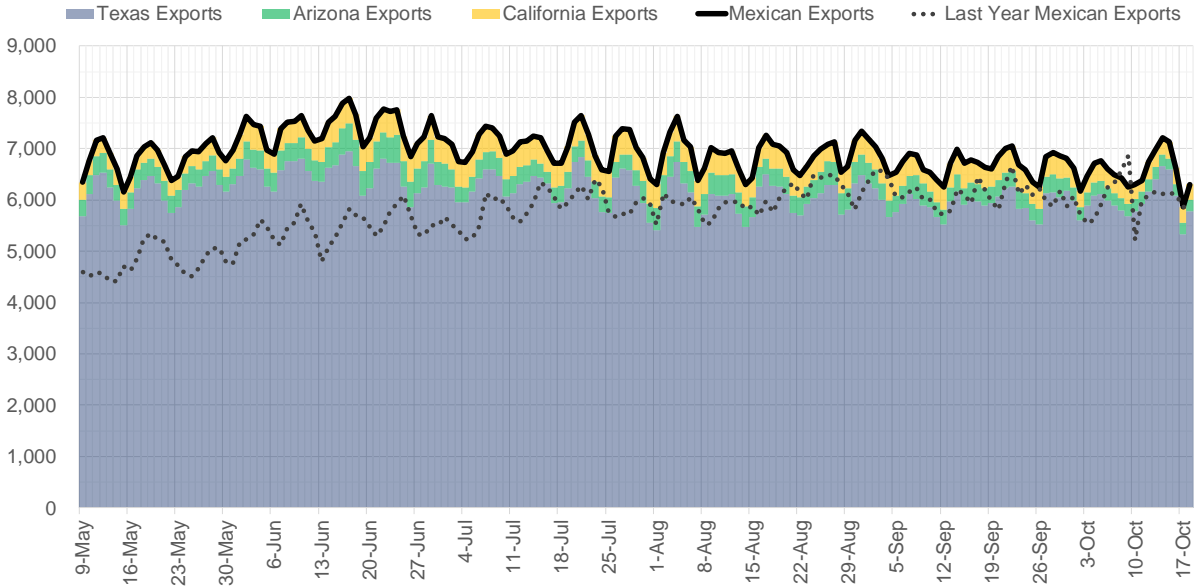
## Supply – Demand Trends



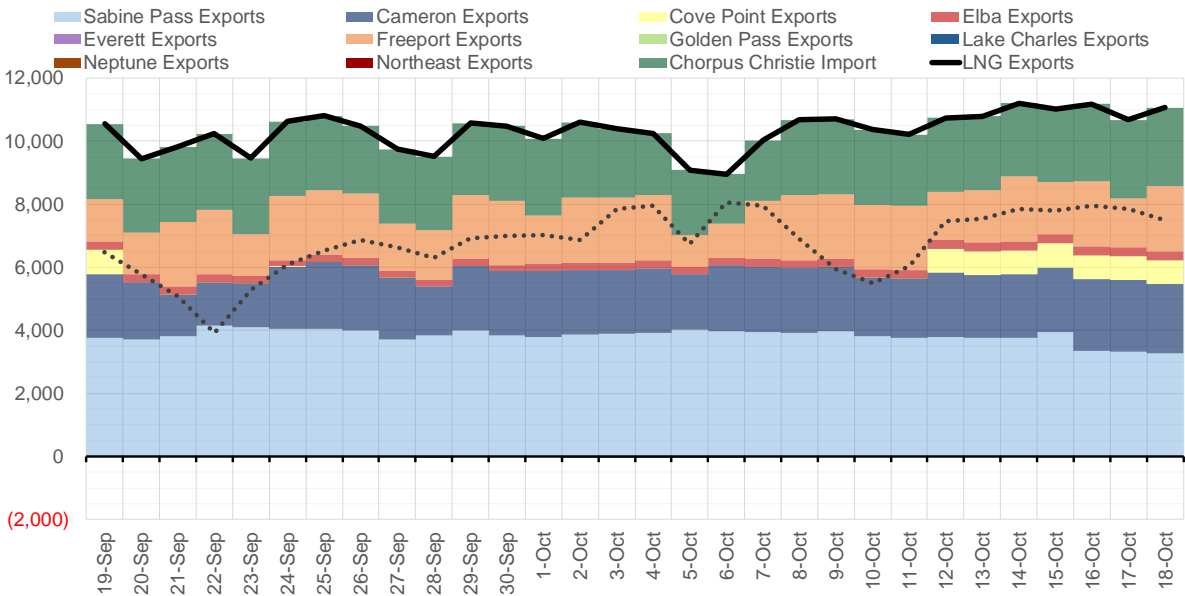
Source: Bloomberg

The risk of trading futures and options and other derivatives involves a substantial risk of loss and is not suitable for all persons. Each person must consider whether a particular trade, combination of trades, or strategy is suitable for that person's financial means and objectives. Past results are not necessarily indicative of future results. This communication may contain links to third party websites which are not under the control of and are not maintained by ION Energy Group, and ION Energy Group is not responsible for their content.

### Mexican Exports (MMcf/d)



### Net LNG Exports - Last 30 days (MMcf/d)



Source: Bloomberg

The risk of trading futures and options and other derivatives involves a substantial risk of loss and is not suitable for all persons. Each person must consider whether a particular trade, combination of trades, or strategy is suitable for that person's financial means and objectives. Past results are not necessarily indicative of future results. This communication may contain links to third party websites which are not under the control of and are not maintained by ION Energy Group, and ION Energy Group is not responsible for their content.

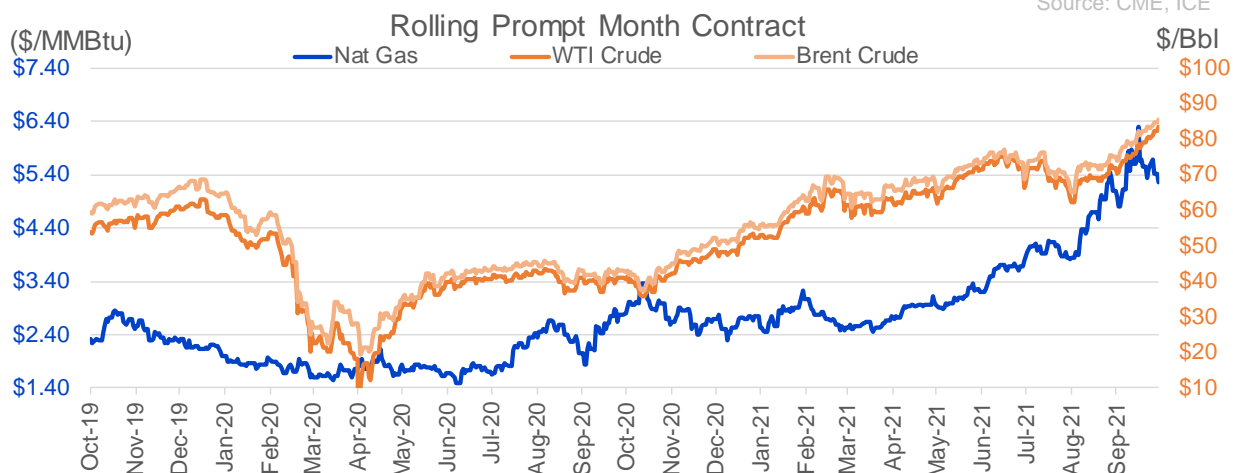
## Nat Gas Options Volume and Open Interest CME, ICE and Nasdaq Combined

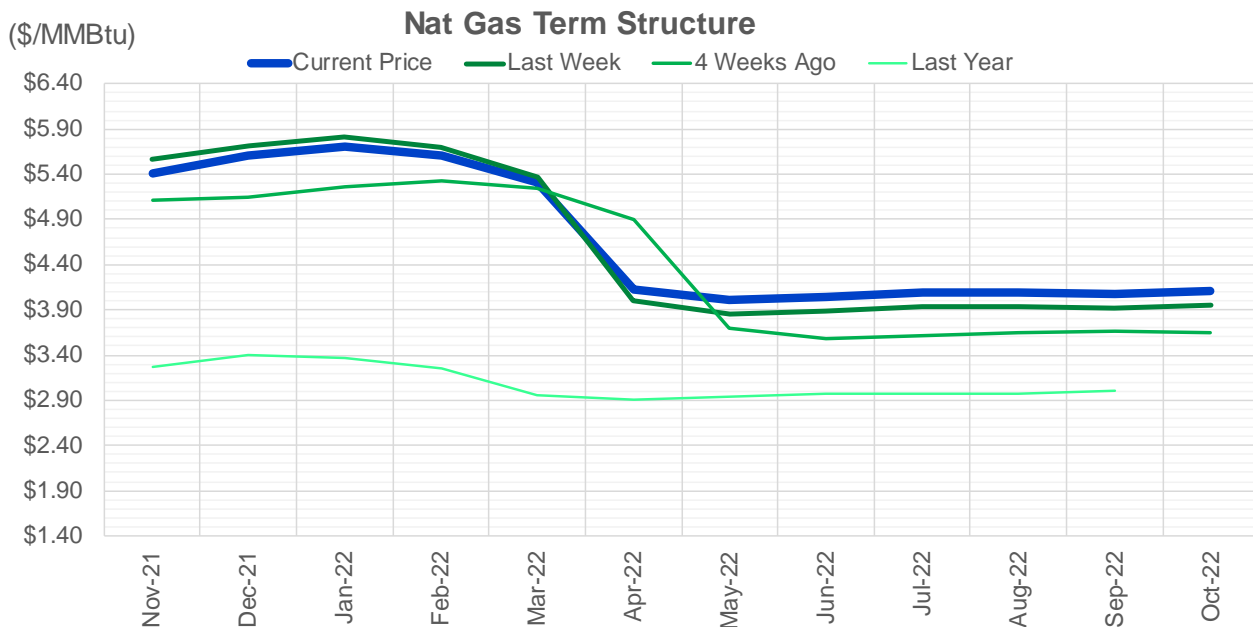
CONTRACT MONTH	CONTRACT YEAR	PUT/CALL	STRIKE	CUMULATIVE VOL	CONTRACT MONTH	CONTRACT YEAR	PUT/CALL	STRIKE	CUMULATIVE OI
11	2021	P	5.00	6758	12	2021	P	2.75	47042
11	2021	P	4.50	6330	12	2021	P	2.50	38604
11	2021	C	6.00	3391	12	2021	P	3.00	35344
12	2021	P	4.00	2965	12	2021	P	4.00	35074
11	2021	C	6.50	2680	11	2021	P	3.00	30167
11	2021	P	4.25	2448	3	2022	C	10.00	29757
11	2021	C	5.60	2429	11	2021	P	5.00	29747
1	2022	C	6.00	2377	12	2021	P	3.50	27105
11	2021	C	7.00	2317	11	2021	P	4.50	25100
11	2021	P	4.75	2191	11	2021	C	7.00	24649
1	2022	C	6.10	2014	11	2021	P	4.00	24116
12	2021	P	3.00	1959	3	2022	C	8.00	23224
11	2021	C	5.50	1869	12	2021	C	4.00	22526
1	2022	P	4.00	1730	3	2022	C	5.00	22300
1	2022	C	5.90	1694	11	2021	C	6.00	21179
11	2021	P	4.00	1683	11	2021	P	3.50	20152
12	2021	P	5.50	1623	11	2021	C	4.00	20144
11	2021	P	5.50	1613	4	2022	C	3.00	19760
4	2022	P	2.50	1550	1	2022	P	3.50	19464
12	2021	P	3.50	1546	12	2021	C	6.00	18691
1	2022	P	3.25	1442	3	2022	P	2.50	18304
1	2022	P	5.50	1350	3	2022	P	3.50	18245
12	2021	P	5.00	1300	2	2022	P	3.50	17966
5	2022	C	6.00	1125	1	2022	C	5.00	17937
12	2021	C	11.00	1110	3	2022	P	4.00	17124
11	2021	C	6.25	1047	1	2022	C	6.00	17018
3	2022	C	8.00	1023	12	2021	P	2.00	16877
11	2021	P	4.70	973	2	2022	C	5.00	16764
12	2021	P	4.50	888	11	2021	C	5.00	15759
12	2021	C	9.00	831	3	2022	C	4.00	15746
4	2022	P	2.25	800	12	2021	C	7.00	15721
4	2022	P	2.75	800	12	2022	C	5.00	14972
3	2022	P	4.00	779	11	2021	C	4.50	14898
2	2022	P	4.00	752	4	2022	P	2.50	14840
1	2022	P	3.00	700	1	2022	P	4.00	14802
3	2022	C	6.00	700	4	2022	C	5.00	14709
10	2022	P	3.00	700	11	2021	P	2.50	14488
12	2021	P	4.90	680	11	2021	C	3.75	14479
2	2022	C	10.00	677	1	2022	C	4.00	14478
12	2021	C	6.00	668	12	2021	P	5.00	14424
12	2021	C	8.00	663	12	2021	C	8.00	14275
11	2021	C	5.20	659	11	2021	P	3.25	14216
1	2022	C	9.00	631	11	2021	C	5.50	14159
1	2022	C	8.00	627	3	2022	C	7.00	13555
1	2022	C	15.00	601	11	2021	P	4.75	13434
2	2022	C	6.00	600	3	2022	C	9.00	13427
2	2022	C	15.00	600	1	2022	P	2.75	13307
3	2022	C	15.00	600	3	2022	P	5.00	13292
4	2022	C	8.00	600	11	2021	C	4.25	13281
					2	2022	C	6	13262.75

Source: CME, ICE

## Nat Gas Futures Open Interest CME, and ICE Combined

CME Henry Hub Futures (10,000 MMBtu)				ICE Henry Hub Futures Contract Equivalent (10,000 MM			
	Current	Prior	Daily Change		Current	Prior	Daily Change
NOV 21	85153	102494	-17341	NOV 21	88884	88102	783
DEC 21	153567	145509	8058	DEC 21	87474	86275	1199
JAN 22	231733	227451	4282	JAN 22	92310	91765	544
FEB 22	71519	68945	2574	FEB 22	68584	68974	-390
MAR 22	148149	146548	1601	MAR 22	75233	74675	558
APR 22	115224	116310	-1086	APR 22	75772	75394	378
MAY 22	112323	110545	1778	MAY 22	70248	70315	-67
JUN 22	40542	38957	1585	JUN 22	54005	54087	-82
JUL 22	38453	40456	-2003	JUL 22	56343	56494	-151
AUG 22	29697	29893	-196	AUG 22	55419	55423	-4
SEP 22	32851	33486	-635	SEP 22	56217	56257	-41
OCT 22	81964	82680	-716	OCT 22	62186	62310	-125
NOV 22	33883	33759	124	NOV 22	48727	48664	63
DEC 22	25982	25729	253	DEC 22	51980	51962	18
JAN 23	28485	28734	-249	JAN 23	38835	38888	-54
FEB 23	10785	10792	-7	FEB 23	32092	32125	-34
MAR 23	14501	14302	199	MAR 23	33699	33721	-22
APR 23	13324	13197	127	APR 23	33512	33503	9
MAY 23	8500	8553	-53	MAY 23	33367	33208	160
JUN 23	7085	7052	33	JUN 23	30026	29902	124
JUL 23	4759	4687	72	JUL 23	30221	30094	128
AUG 23	3900	4117	-217	AUG 23	30096	29968	128
SEP 23	4293	4291	2	SEP 23	29246	29122	124
OCT 23	6051	6008	43	OCT 23	32589	32431	158
NOV 23	3119	3018	101	NOV 23	30562	30444	118
DEC 23	3937	3939	-2	DEC 23	28079	27964	115
JAN 24	1374	1370	4	JAN 24	15957	15942	16
FEB 24	1121	1202	-81	FEB 24	13548	13509	40
MAR 24	4255	4233	22	MAR 24	18186	18147	40
APR 24	3411	3431	-20	APR 24	12616	12582	34





	Nov-21	Dec-21	Jan-22	Feb-22	Mar-22	Apr-22	May-22	Jun-22	Jul-22	Aug-22	Sep-22	Oct-22
<b>Current Price</b>	<b>\$5.410</b>	<b>\$5.600</b>	<b>\$5.708</b>	<b>\$5.613</b>	<b>\$5.317</b>	<b>\$4.121</b>	<b>\$4.008</b>	<b>\$4.046</b>	<b>\$4.087</b>	<b>\$4.091</b>	<b>\$4.073</b>	<b>\$4.104</b>
Last Week	\$5.565	\$5.710	\$5.806	\$5.701	\$5.370	\$3.996	\$3.854	\$3.891	\$3.931	\$3.936	\$3.916	\$3.948
vs. Last Week	-\$0.155	-\$0.110	-\$0.098	-\$0.088	-\$0.053	\$0.125	\$0.154	\$0.155	\$0.156	\$0.155	\$0.157	\$0.156
4 Weeks Ago	\$5.105	\$5.146	\$5.258	\$5.328	\$5.244	\$4.902	\$3.703	\$3.576	\$3.611	\$3.653	\$3.661	\$3.644
vs. 4 Weeks Ago	\$0.305	\$0.454	\$0.450	\$0.285	\$0.073	-\$0.781	\$0.305	\$0.470	\$0.476	\$0.438	\$0.412	\$0.460
Last Year	\$2.773	\$3.271	\$3.405	\$3.364	\$3.249	\$2.948	\$2.906	\$2.933	\$2.970	\$2.979	\$2.966	\$3.001
vs. Last Year	\$2.637	\$2.329	\$2.303	\$2.249	\$2.068	\$1.173	\$1.102	\$1.113	\$1.117	\$1.112	\$1.107	\$1.103

	Units	Cash Settled	Prompt Settle	Cash to Prompt
AGT Citygate	\$/MMBtu	5.45	8.39	2.94
TETCO M3	\$/MMBtu	4.56	5.19	0.63
FGT Zone 3	\$/MMBtu	4.60	5.75	1.15
Zone 6 NY	\$/MMBtu	4.60	5.55	0.95
Chicago Citygate	\$/MMBtu	5.01	5.47	0.46
Michcon	\$/MMBtu	5.08	5.32	0.24
Columbia TCO Pool	\$/MMBtu	4.70	5.01	0.31
Ventura	\$/MMBtu	5.06	5.70	0.64
Rockies/Opal	\$/MMBtu	5.62	5.45	-0.17
El Paso Permian Basin	\$/MMBtu	4.79	5.28	0.49
Socal Citygate	\$/MMBtu	5.66	6.12	0.46
Malin	\$/MMBtu	5.70	5.96	0.26
Houston Ship Channel	\$/MMBtu	5.19	5.49	0.30
Henry Hub Cash	\$/MMBtu	5.44	5.39	-0.05
AECO Cash	C\$/GJ	4.24	4.38	0.14
Station2 Cash	C\$/GJ	0.20	6.57	6.37
Dawn Cash	C\$/GJ	4.96	5.41	0.45

Source: CME, Bloomberg

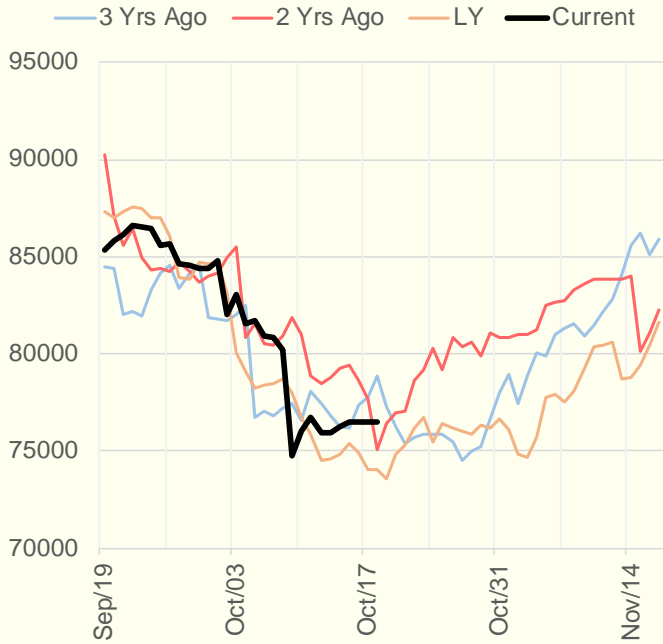
	Units	Current Price	vs. Last Week	vs. 4 Weeks Ago	vs. Last Year
NatGas Jul21/Oct21	\$/MMBtu	2.224	▲ 0.000	▲ 0.736	▲ 2.193
NatGas Oct21/Nov21	\$/MMBtu	-0.431	▼ -0.155	▼ -0.472	▼ -0.490
NatGas Oct21/Jan22	\$/MMBtu	-0.133	▼ -0.098	▼ -0.356	▼ -0.425
NatGas Apr22/Oct22	\$/MMBtu	-0.017	▲ 0.031	▲ 0.014	▼ -0.032
WTI Crude	\$/Bbl	82.28	▲ 2.930	▲ 10.310	▲ 41.400
Brent Crude	\$/Bbl	84.86	▲ 2.470	▲ 9.520	▲ 41.930
Fuel Oil, NY Harbour 1%	\$/Bbl	97.18	▲ 0.000	▲ 0.000	▲ 0.000
Heating Oil	cents/Gallon	257.37	▲ 10.000	▲ 36.460	▲ 139.460
Propane, Mt. Bel	cents/Gallon	1.48	▲ 0.015	▲ 0.203	▲ 0.955
Ethane, Mt. Bel	cents/Gallon	0.44	▲ 0.002	▲ 0.055	▲ 0.226
Coal, PRB	\$/MTon	12.30	▲ 0.000	▲ 0.000	▲ 0.000
Coal, PRB	\$/MMBtu	0.70			
Coal, ILB	\$/MTon	31.05	▲ 0.000	▲ 0.000	▲ 0.000
Coal, ILB	\$/MMBtu	1.32			

## Weather Storage Model - Next 4 Week Forecast

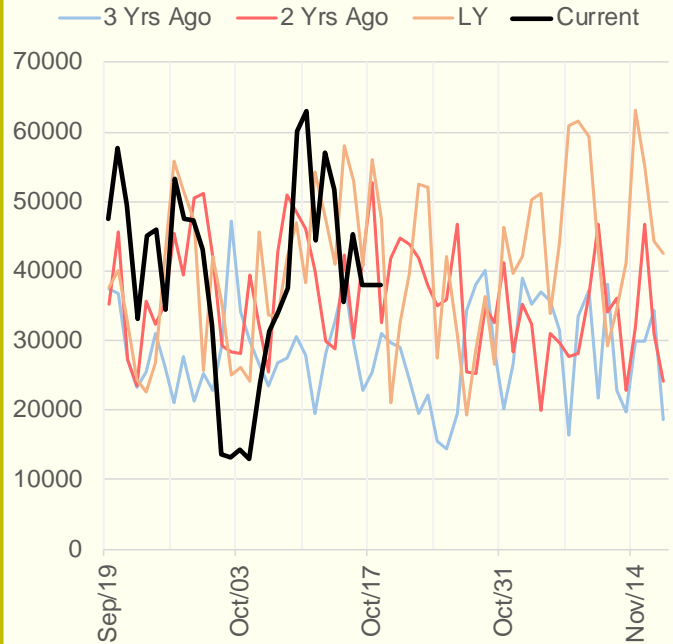


The risk of trading futures and options and other derivatives involves a substantial risk of loss and is not suitable for all persons. Each person must consider whether a particular trade, combination of trades, or strategy is suitable for that person's financial means and objectives. Past results are not necessarily indicative of future results. This communication may contain links to third party websites which are not under the control of and are not maintained by ION Energy Group, and ION Energy Group is not responsible for their content.

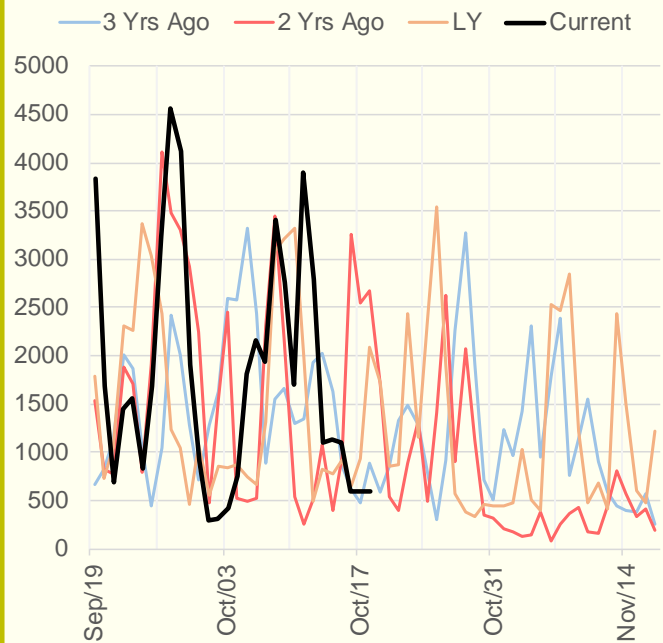
### NRC Nuclear Daily Output



### US Wind



### CALI Wind



### TEXAS Wind

