

	Current	Δ from YD	Δ from 7D Avg
Nat Gas Prompt	\$ 5.74 ▲	\$ 0.15 ▲	\$ 0.20

	Current	Δ from YD	Δ from 7D Avg
WTI Prompt	\$ 81.32 ▲	\$ 0.88 ▲	\$ 1.6

	Current	Δ from YD	Δ from 7D Avg
Brent Prompt	\$ 84.08 ▲	\$ 0.90 ▲	\$ 1.3

### Page Menu

[Short-term Weather Model Outlooks](#)

[Lower 48 Component Models](#)

[Regional S/D Models Storage Projection](#)

[Weather Model Storage Projection](#)

[Supply – Demand Trends](#)

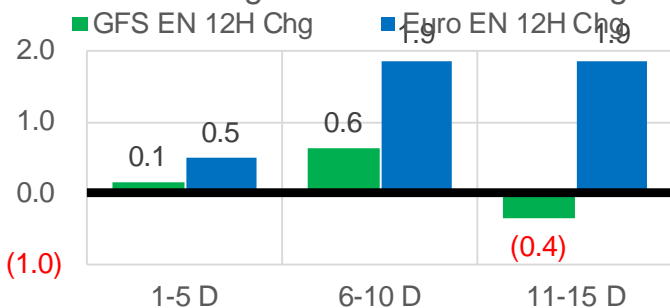
[Nat Gas Options Volume and Open Interest](#)

[Nat Gas Futures Open Interest](#)

[Price Summary](#)

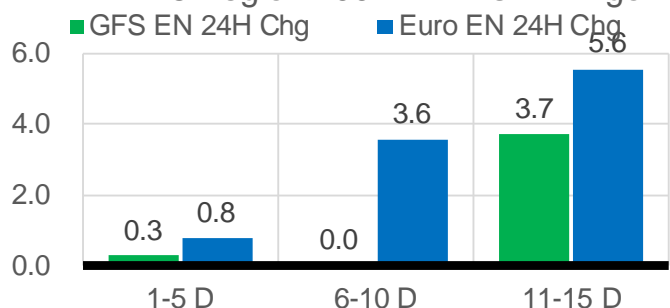
### Vs. 12H Ago

L48 Region - 00z TDD vs 12H Ago



### Vs. 24H Ago

L48 Region - 00z TDD vs 24H Ago



	Current	Δ from YD	Δ from 7D Avg
US Dry Production	91.9 ▲	0.16	-0.52 ▼

	Current	Δ from YD	Δ from 7D Avg
US Power Burns	32.1 ▲	0.67	0.48 ▲

	Current	Δ from YD	Δ from 7D Avg
US ResComm	10.3 ▼	-0.56	1.09 ▲

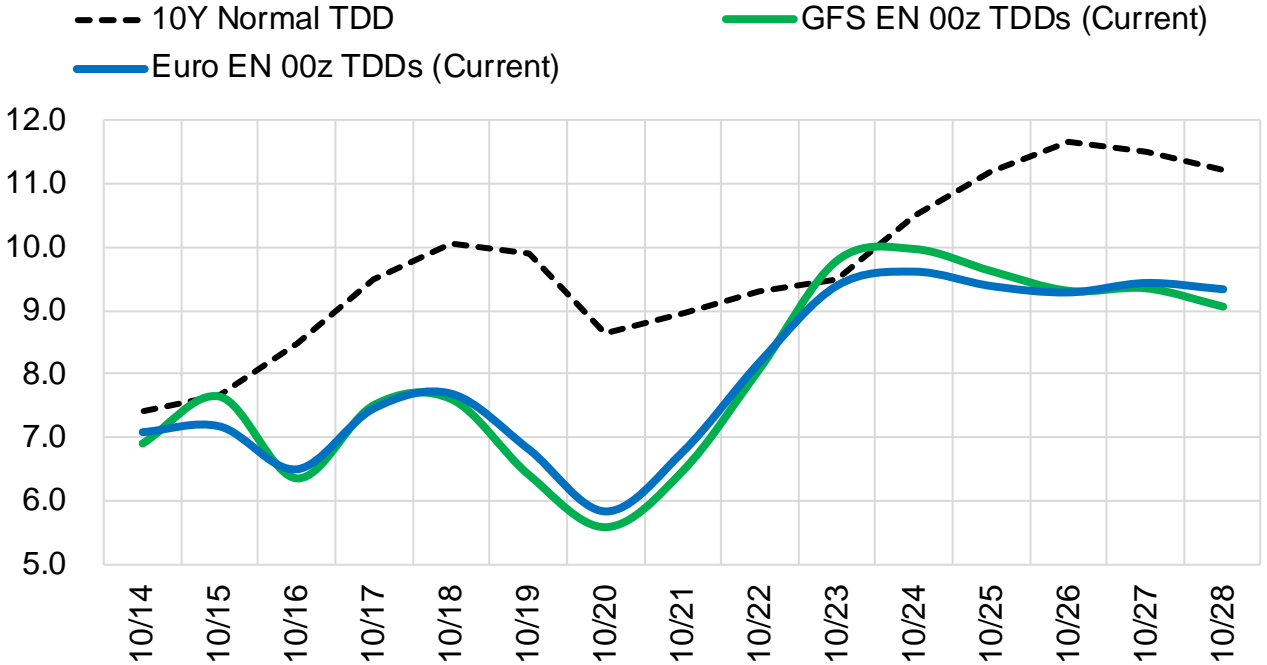
	Current	Δ from YD	Δ from 7D Avg
Canadian Imports	5.0 ▲	0.24	0.09 ▲

	Current	Δ from YD	Δ from 7D Avg
Net LNG Exports	11.2 ▲	0.40	0.68 ▲

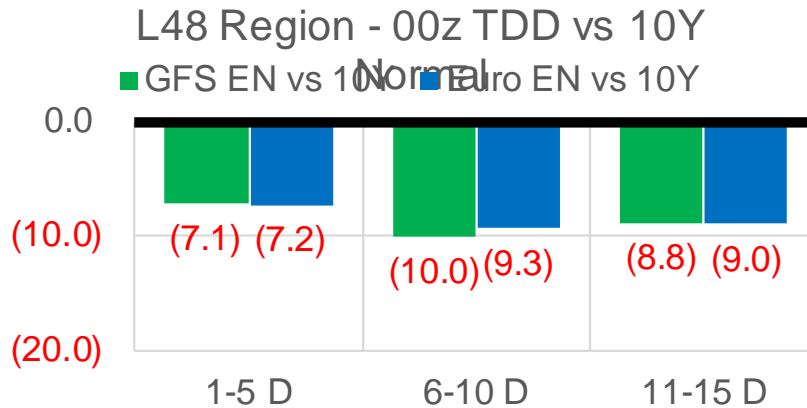
	Current	Δ from YD	Δ from 7D Avg
Mexican Exports	6.9 ▼	-0.05	0.42 ▲

## Short-term Weather Model Outlooks (00z)

### L48 Region



## Vs. 10Y Normal



Source: WSI , Bloomberg

## Lower 48 Component Models

### Daily Balances

	8-Oct	9-Oct	10-Oct	11-Oct	12-Oct	13-Oct	14-Oct	DoD	vs. 7D
<b>Lower 48 Dry Production</b>	<b>92.5</b>	<b>92.8</b>	<b>92.8</b>	<b>92.5</b>	<b>91.8</b>	<b>91.7</b>	<b>91.9</b>	▲ 0.2	▼ -0.5
<b>Canadian Imports</b>	<b>4.9</b>	<b>4.9</b>	<b>5.0</b>	<b>4.9</b>	<b>4.8</b>	<b>4.7</b>	<b>5.0</b>	▲ 0.2	▲ 0.1
L48 Power	33.1	30.0	30.4	31.3	30.9	31.4	32.1	▲ 0.7	▲ 0.9
L48 Residential & Commercial	8.4	8.4	8.4	9.5	10.7	10.8	10.3	▼ -0.6	▲ 0.9
L48 Industrial	20.3	19.7	19.5	19.5	19.7	19.9	20.1	▲ 0.2	▲ 0.4
L48 Lease and Plant Fuel	5.0	5.1	5.1	5.0	5.0	5.0	5.0	▼ 0.0	▼ -0.1
L48 Pipeline Distribution	2.2	2.0	2.1	2.2	2.2	2.3	2.3	▲ 0.0	▲ 0.1
<b>L48 Regional Gas Consumption</b>	<b>69.0</b>	<b>65.1</b>	<b>65.5</b>	<b>67.5</b>	<b>68.5</b>	<b>69.4</b>	<b>69.7</b>	▲ 0.3	▲ 2.2
<b>Net LNG Delivered</b>	<b>10.69</b>	<b>10.71</b>	<b>10.37</b>	<b>10.22</b>	<b>10.75</b>	<b>10.79</b>	<b>11.19</b>	▲ 0.4	▲ 0.6
<b>Total Mexican Exports</b>	<b>6.5</b>	<b>6.2</b>	<b>6.2</b>	<b>6.4</b>	<b>6.7</b>	<b>7.0</b>	<b>6.9</b>	▼ -0.1	▲ 0.4
<b>Implied Daily Storage Activity</b>	<b>11.2</b>	<b>15.8</b>	<b>15.7</b>	<b>13.3</b>	<b>10.7</b>	<b>9.3</b>	<b>9.0</b>		
<b>EIA Reported Daily Storage Activity</b>									
<b>Daily Model Error</b>									

### EIA Storage Week Balances

	3-Sep	10-Sep	17-Sep	24-Sep	1-Oct	8-Oct	WoW	vs. 4W
<b>Lower 48 Dry Production</b>	<b>90.9</b>	<b>91.3</b>	<b>91.9</b>	<b>92.9</b>	<b>93.2</b>	<b>92.8</b>	▼ -0.4	▲ 0.5
<b>Canadian Imports</b>	<b>5.0</b>	<b>4.8</b>	<b>5.0</b>	<b>5.2</b>	<b>5.7</b>	<b>5.3</b>	▼ -0.4	▲ 0.1
L48 Power	38.1	33.8	35.1	33.2	30.2	32.7	▲ 2.5	▼ -0.3
L48 Residential & Commercial	7.4	6.9	7.2	8.0	8.4	8.2	▼ -0.2	▲ 0.5
L48 Industrial	18.8	19.5	20.7	20.5	20.2	21.2	▲ 1.0	▲ 0.9
L48 Lease and Plant Fuel	5.0	5.0	5.0	5.1	5.1	5.1	▼ 0.0	▲ 0.0
L48 Pipeline Distribution	2.4	2.2	2.3	2.3	2.1	2.2	▲ 0.1	▼ 0.0
<b>L48 Regional Gas Consumption</b>	<b>71.7</b>	<b>67.5</b>	<b>70.2</b>	<b>69.1</b>	<b>65.9</b>	<b>69.2</b>	▲ 3.3	▲ 1.1
<b>Net LNG Exports</b>	<b>10.5</b>	<b>11.0</b>	<b>10.2</b>	<b>9.9</b>	<b>10.3</b>	<b>9.9</b>	▼ -0.4	▼ -0.4
<b>Total Mexican Exports</b>	<b>7.0</b>	<b>6.7</b>	<b>6.6</b>	<b>6.8</b>	<b>6.7</b>	<b>6.6</b>	▼ -0.1	▼ -0.1
<b>Implied Daily Storage Activity</b>	<b>6.7</b>	<b>10.9</b>	<b>9.8</b>	<b>12.2</b>	<b>16.0</b>	<b>12.4</b>	-3.6	
<b>EIA Reported Daily Storage Activity</b>	<b>7.4</b>	<b>11.9</b>	<b>10.9</b>	<b>12.6</b>	<b>16.9</b>			
<b>Daily Model Error</b>	<b>-0.7</b>	<b>-1.0</b>	<b>-1.0</b>	<b>-0.3</b>	<b>-0.9</b>			

### Monthly Balances

	2Yr Ago Oct-19	LY Oct-20	Jun-21	Jul-21	Aug-21	Sep-21	MTD Oct-21	MoM	vs. LY
<b>Lower 48 Dry Production</b>	<b>95.1</b>	<b>88.3</b>	<b>93.3</b>	<b>93.3</b>	<b>92.4</b>	<b>92.2</b>	<b>92.5</b>	▲ 0.3	▲ 4.2
<b>Canadian Imports</b>	<b>4.6</b>	<b>4.3</b>	<b>4.9</b>	<b>5.2</b>	<b>5.1</b>	<b>5.1</b>	<b>5.1</b>	▼ 0.0	▲ 0.8
L48 Power	30.3	30.8	35.9	39.4	40.2	33.1	32.0	▼ -1.1	▲ 1.3
L48 Residential & Commercial	15.3	15.3	8.8	8.1	7.7	7.6	8.8	▲ 1.2	▼ -6.5
L48 Industrial	23.5	22.6	20.5	20.8	20.2	20.1	20.5	▲ 0.4	▼ -2.1
L48 Lease and Plant Fuel	5.1	4.8	5.0	5.1	5.0	5.0	5.0	▲ 0.0	▲ 0.2
L48 Pipeline Distribution	2.4	2.5	2.4	2.5	2.5	2.2	2.2	▼ -0.1	▼ -0.3
<b>L48 Regional Gas Consumption</b>	<b>76.6</b>	<b>75.9</b>	<b>72.7</b>	<b>76.0</b>	<b>75.7</b>	<b>68.1</b>	<b>68.5</b>	▲ 0.4	▼ -7.4
<b>Net LNG Exports</b>	<b>6.7</b>	<b>8.0</b>	<b>10.2</b>	<b>10.8</b>	<b>10.5</b>	<b>10.3</b>	<b>10.3</b>	▼ 0.0	▲ 2.3
<b>Total Mexican Exports</b>	<b>5.4</b>	<b>6.0</b>	<b>7.4</b>	<b>7.1</b>	<b>6.9</b>	<b>6.7</b>	<b>6.6</b>	▼ -0.2	▲ 0.6
<b>Implied Daily Storage Activity</b>	<b>11.1</b>	<b>2.7</b>	<b>7.8</b>	<b>4.6</b>	<b>4.5</b>	<b>12.1</b>	<b>12.2</b>		
<b>EIA Reported Daily Storage Activity</b>									
<b>Daily Model Error</b>									

Source: Bloomberg, analytix.ai

## Daily Average Generation Data

### Nuclear Generation Daily Average - GWh (NRC)

	6-Oct	7-Oct	8-Oct	9-Oct	10-Oct	11-Oct	12-Oct	DoD	vs. 7D
NRC Nuclear Daily Output	81.0	80.9	80.2	74.8	76.0	76.7	75.9	-0.8	-2.3
NRC Nuclear Max Capacity	104.9	104.9	104.9	104.9	104.9	104.9	104.9	0.0	0.0
NRC Nuclear Outage	23.9	24.0	24.7	30.1	28.9	28.2	29.0	0.8	2.3
NRC % Nuclear Cap Utilization	82.3	82.2	81.5	76.0	77.3	78.0	77.2	-0.8	-2.4

### Wind Generation Daily Average - MWh (EIA)

	6-Oct	7-Oct	8-Oct	9-Oct	10-Oct	11-Oct	12-Oct	DoD	vs. 7D
CALI Wind	2162	1931	3402	2766	1700	3903	2794	-1108	150
TEXAS Wind	6824	12342	16198	18293	20964	10073	21150	11077	7035
US Wind	31367	34210	37562	60053	63036	44491	56956	12465	11836

### Generation Daily Average - MWh (EIA)

	6-Oct	7-Oct	8-Oct	9-Oct	10-Oct	11-Oct	12-Oct	DoD	vs. 7D
US Wind	31367	34210	37562	60053	63036	44491	56956	12465	11836
US Solar	10611	9179	8522	9837	10498	10382	8634	-1748	-1204
US Petroleum	3490	3541	3549	2368	2684	3104	3191	87	68
US Other	12117	12057	11981	11724	11830	12105	12020	-85	51
US Coal	98440	98959	97722	84373	83087	92217	88611	-3606	-3855
US Nuke	81560	81401	80235	75536	76471	76799	76459	-340	-2208
US Hydro	24918	26594	27309	23069	22244	25313	26069	756	1161
<b>US Gas</b>	<b>175206</b>	<b>176861</b>	<b>173667</b>	<b>148187</b>	<b>143720</b>	<b>163580</b>	<b>159208</b>	<b>-4372</b>	<b>-4329</b>

See National Wind and Nuclear daily charts

Source: Bloomberg, analytix.ai

## Storage Week Average Generation Data

### Nuclear Generation Weekly Average - GWh (NRC)

	3-Sep	10-Sep	17-Sep	24-Sep	1-Oct	8-Oct	WoW	WoW Bcf/d Impact
NRC Nuclear Daily Output	90.2	90.3	86.7	85.9	85.1	82.1	-3.0	0.5
NRC Nuclear Max Capacity	104.9	104.9	104.9	104.9	104.9	104.9	0.0	
NRC Nuclear Outage	14.7	14.6	18.2	19.0	19.8	22.7	3.0	
NRC % Nuclear Cap Utilization	0.1	0.1	0.1	0.1	0.1	0.1	0.0	

### Wind Generation Weekly Average - MWh (EIA)

	3-Sep	10-Sep	17-Sep	24-Sep	1-Oct	8-Oct	WoW	WoW Bcf/d Impact
CALI Wind	2247	1236	2083	1936	2467	1099	-1368	0.2
TEXAS Wind	7534	7327	9541	9780	10364	4890	-5473	1.0
US Wind	35459	30662	42378	43250	43452	20468	-22984	4.1
					201.4			
					0%			

### Generation Weekly Average - MWh (EIA)

	3-Sep	10-Sep	17-Sep	24-Sep	1-Oct	8-Oct	WoW	WoW Bcf/d Impact
US Wind	35459	30662	42378	43250	43452	20468	-22984	4.1
US Solar	13358	14254	14057	12185	12957	11237	-1720	0.3
US Petroleum	3135	2072	2470	2594	2712	3901	1189	-0.2
US Other	9764	8932	9273	9121	8709	10905	2196	-0.4
US Coal	136318	116993	115066	109063	94776	100713	5938	-1.1
US Nuke	92365	93162	89490	88789	88402	83696	-4706	0.8
US Hydro	28181	26944	24138	25340	25279	24516	-763	0.1
<b>US Gas</b>	<b>205503</b>	<b>181094</b>	<b>182116</b>	<b>175354</b>	<b>153814</b>	<b>176562</b>	<b>22748</b>	<b>-4.1</b>

See National Wind and Nuclear daily charts

Source: Bloomberg, analytix.ai

## Monthly Average Generation Data

### Nuclear Generation Monthly Average - GWh (NRC)

	2Yr Ago		LY		MTD			Last 30 days	MoM (MTD vs LY)	Last 30 days YoY
	Same 30 days	Same 30 days	Jul-21	Aug-21	Sep-21	Oct-21				
	NRC Nuclear Daily Output	84.0	83.0	90.1	91.5	87.2	68.5			
NRC Nuclear Max Capacity	104.9	104.9	104.9	104.9	104.9	104.9	104.9	0.0	0.0	
NRC Nuclear Outage	20.8	21.9	14.8	13.4	17.7	36.4	27.3	18.7	5.4	
NRC % Nuclear Cap Utilization	85.5	84.4	91.6	93.0	88.7	69.6	78.9	-19.1	-5.5	

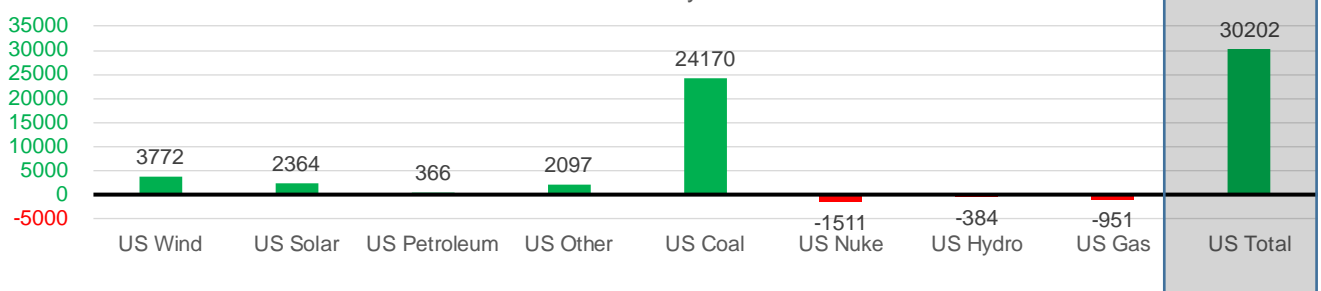
### Wind Generation Monthly Average - MWh (EIA)

	2Yr Ago		LY		MTD			Last 30 days	MoM (MTD vs LY)	Last 30 days YoY
	Same 30 days	Same 30 days	Jul-21	Aug-21	Sep-21	Oct-21				
	CALI Wind	1820	1503	2338	2442	2020	1989			
TEXAS Wind	9229	7744	7217	9901	9400	11658	10561	2258	2817	
US Wind	36839	36334	29217	35830	40216	37092	40106	-3124	3772	

### Generation Monthly Average - MWh (EIA)

	2Yr Ago		LY		MTD			Last 30 days	MoM (MTD vs LY)	Last 30 days YoY
	Same 30 days	Same 30 days	Jul-21	Aug-21	Sep-21	Oct-21				
	US Wind	36839	36334	29217	35830	40216	37092			
US Solar	8730	9170	14140	13787	13379	10272	11534	▲ 1262.7	▲ 2364	
US Petroleum	4191	2654	4233	4484	2452	3470	3021	▼ -449	▲ 366	
US Other	8273	8032	9326	9928	9008	11431	10129	▼ -1302	▲ 2097	
US Coal	104028	75670	137228	137655	110033	94873	99839	▲ 4966	▲ 24170	
US Nuke	90382	86250	92911	94062	90146	80306	84739	▲ 4432	▼ -1511	
US Hydro	24176	25290	29941	28532	25639	24840	24906	▲ 66	▼ -384	
US Gas	172313	168466	207823	210824	173536	167336	167515	▲ 11990	▼ -951	
US Total	449491	411883	524834	534937	464619	429839	442084	▲ 20966	▲ 30202	

Last 30 days YoY



See National Wind and Nuclear daily charts

Source: Bloomberg, analytix.ai

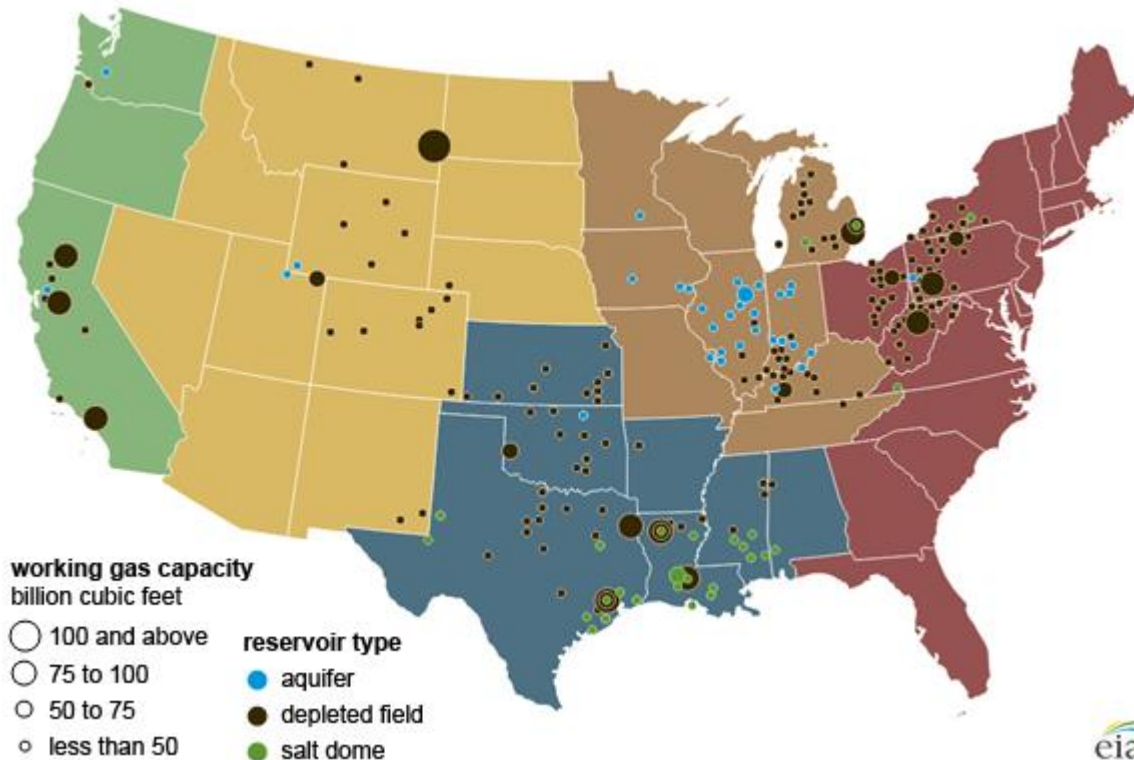
## Regional S/D Models Storage Projection

Week Ending 8-Oct

	Daily Raw Storage	Daily Adjustment Factor	Daily Average Storage Activity (Adjusted) *	Weekly Adjusted Storage Activity
L48	12.1	1.2	13.3	93
East	3.1	0.6	3.7	26
Midwest	4.4	-0.7	3.7	26
Mountain	3.8	-3.2	0.6	4
South Central	-0.2	5.1	4.9	35
Pacific	1.0	-0.5	0.4	3

\*Adjustment Factor is calculated based on historical regional deltas

U.S. underground natural gas storage facilities by type (July 2015)

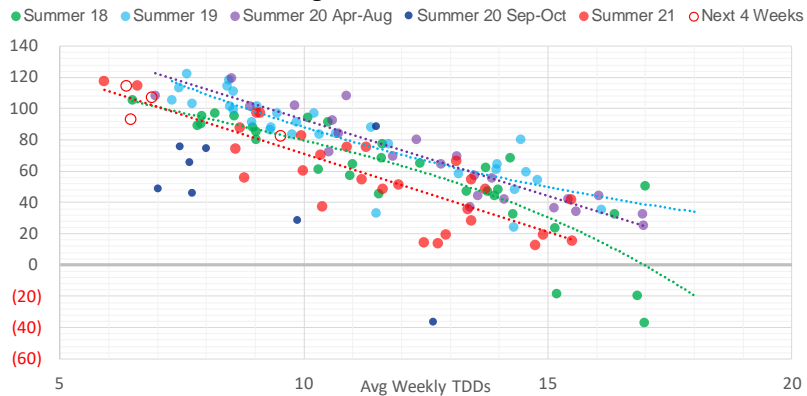


## Weather Model Storage Projection

Next report  
and beyond

Week Ending	GWDDs	Week Storage Projection
08-Oct	6.5	93
15-Oct	6.4	114
22-Oct	6.9	107
29-Oct	9.5	82

**Weather Storage Model - Next 4 Week Forecast**

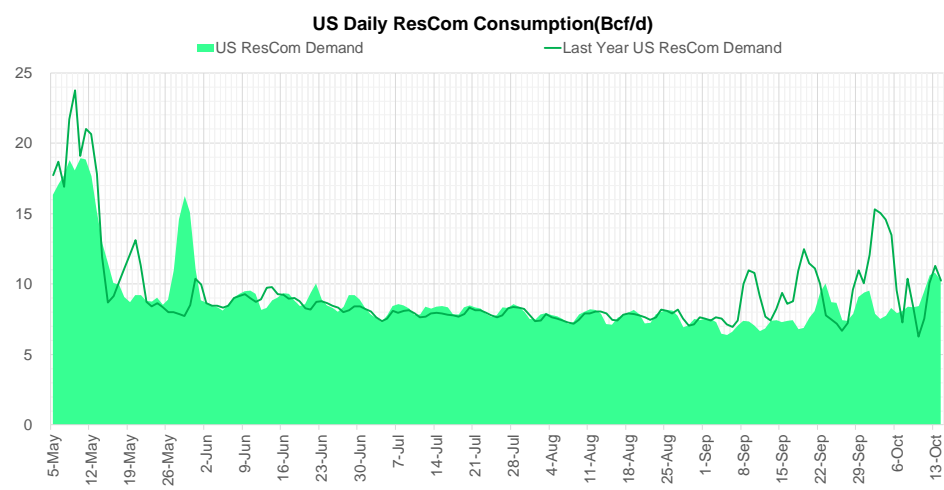
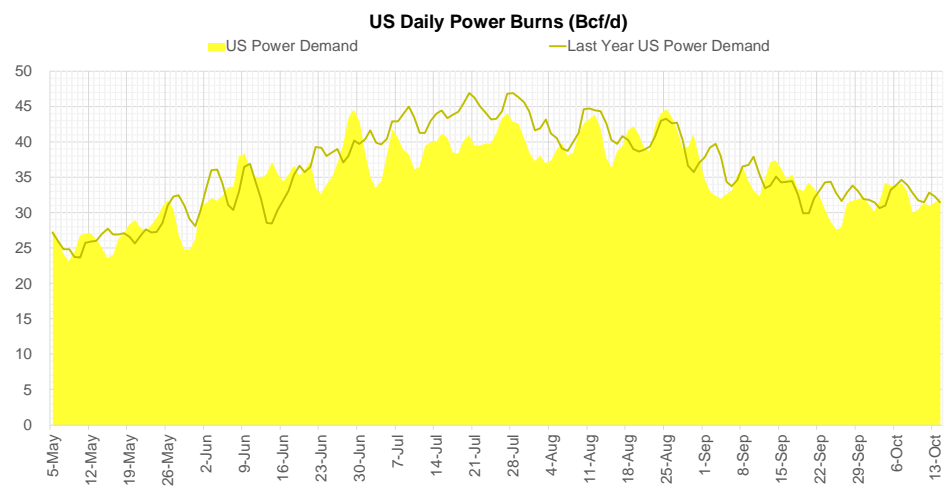
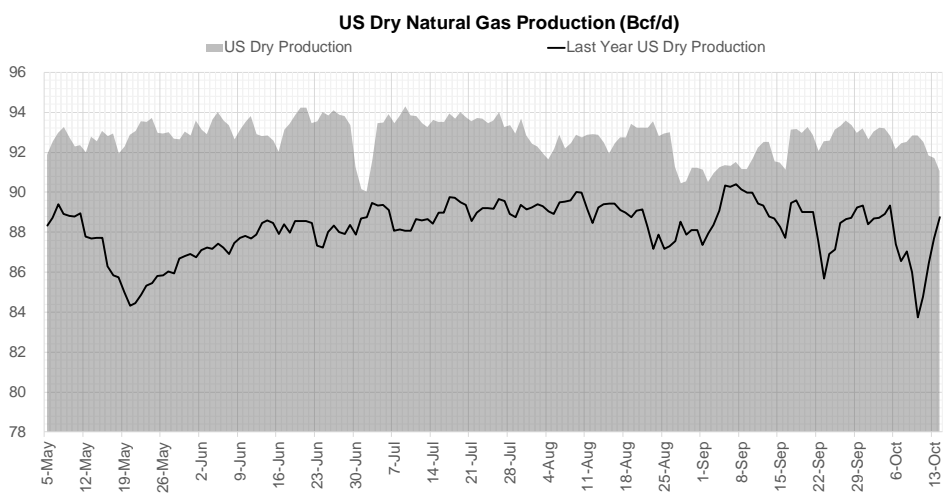


Go to larger image



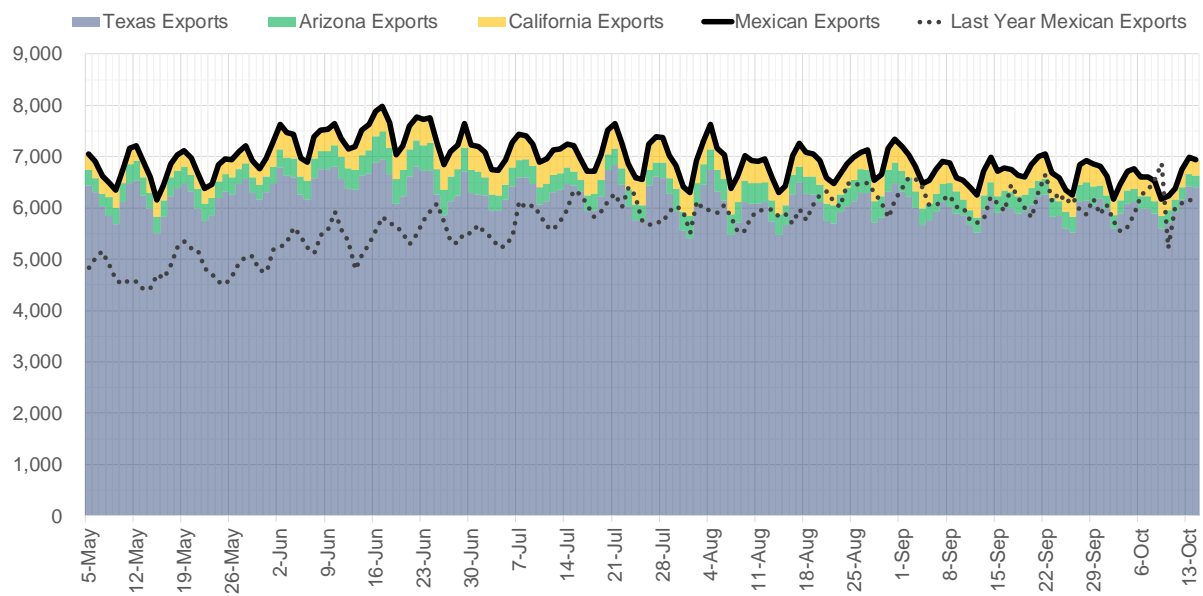


## Supply – Demand Trends

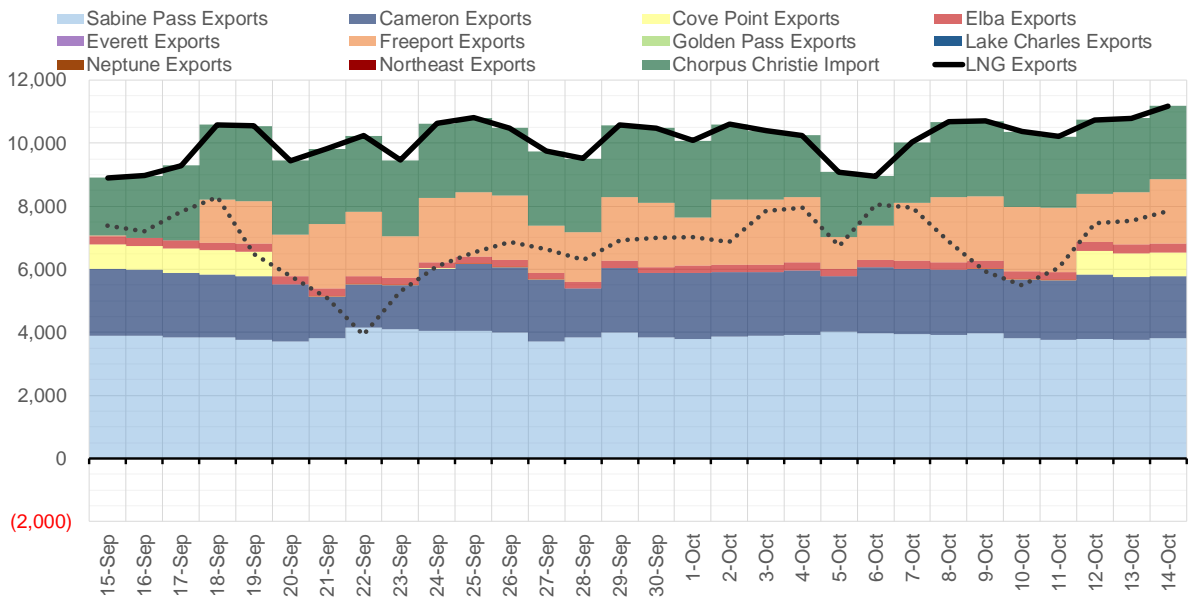


Source: Bloomberg

### Mexican Exports (MMcf/d)



### Net LNG Exports - Last 30 days (MMcf/d)



Source: Bloomberg

The risk of trading futures and options and other derivatives involves a substantial risk of loss and is not suitable for all persons. Each person must consider whether a particular trade, combination of trades, or strategy is suitable for that person's financial means and objectives. Past results are not necessarily indicative of future results. This communication may contain links to third party websites which are not under the control of and are not maintained by ION Energy Group, and ION Energy Group is not responsible for their content.

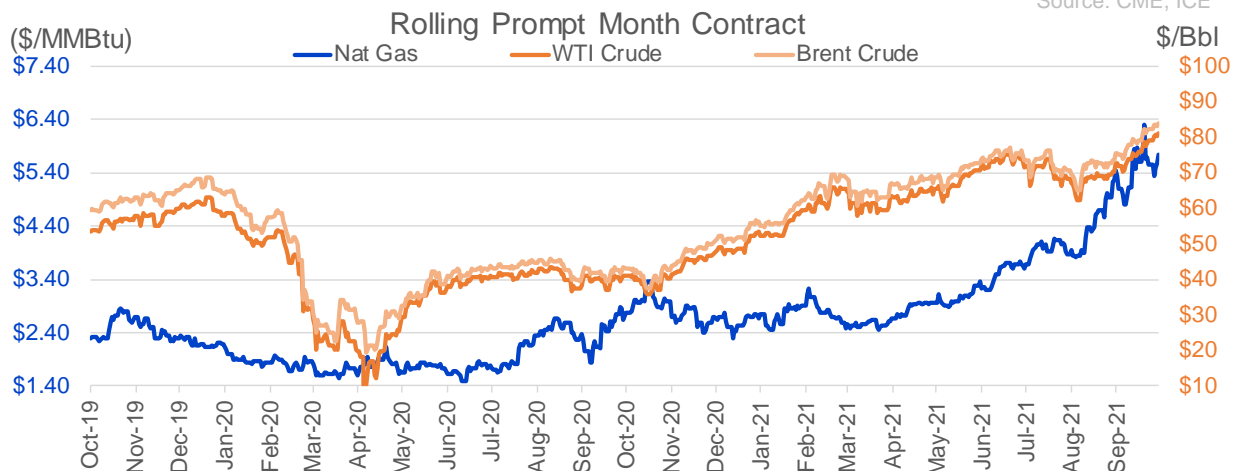
## Nat Gas Options Volume and Open Interest CME, ICE and Nasdaq Combined

CONTRACT MONTH	CONTRACT YEAR	PUT/CALL	STRIKE	CUMULATIVE VOL	CONTRACT MONTH	CONTRACT YEAR	PUT/CALL	STRIKE	CUMULATIVE OI
11	2021	C	6.00	4345	12	2021	P	2.75	48192
11	2021	C	7.00	3780	12	2021	P	2.50	38608
12	2021	C	10.00	3651	12	2021	P	3.00	34442
11	2021	C	5.25	3593	12	2021	P	4.00	32062
11	2021	P	4.75	3119	3	2022	C	10.00	30404
12	2021	P	5.00	2989	11	2021	P	3.00	30167
11	2021	P	4.50	2968	11	2021	P	5.00	27340
11	2021	P	5.00	2919	12	2021	P	3.50	26765
11	2021	C	5.50	2654	11	2021	P	4.00	26114
1	2022	P	3.00	2502	11	2021	C	7.00	24535
12	2021	C	15.00	2399	3	2022	C	8.00	24399
11	2021	C	6.50	2287	11	2021	P	4.50	23219
12	2021	C	7.00	2221	12	2021	C	4.00	22526
1	2022	C	10.00	1746	3	2022	C	5.00	22281
12	2021	C	6.00	1708	11	2021	C	6.00	21860
8	2022	C	4.00	1535	11	2021	P	3.50	20198
11	2021	C	7.50	1510	11	2021	C	4.00	20145
12	2021	P	3.00	1501	4	2022	C	3.00	19760
12	2021	P	2.75	1500	1	2022	P	3.50	18968
1	2022	P	2.75	1500	3	2022	P	2.50	18259
1	2022	P	3.50	1470	2	2022	P	3.50	17955
6	2022	C	4.00	1435	1	2022	C	5.00	17938
12	2021	P	4.25	1430	3	2022	P	3.50	17616
12	2021	C	9.00	1377	12	2021	C	6.00	17581
2	2022	C	8.00	1225	1	2022	C	6.00	16978
11	2021	C	4.95	1175	2	2022	C	5.00	16769
11	2021	P	5.25	1121	12	2021	C	7.00	16572
12	2021	P	3.75	1119	3	2022	P	4.00	16542
5	2022	C	4.00	1085	3	2022	C	4.00	15776
7	2022	C	4.00	1085	11	2021	C	5.00	15735
3	2022	P	3.50	1052	11	2021	C	4.50	14899
1	2022	C	15.00	1050	4	2022	C	5.00	14877
4	2022	C	4.00	1035	12	2022	C	5.00	14872
9	2022	C	4.00	1035	4	2022	P	2.50	14589
10	2022	C	4.00	1035	11	2021	P	2.50	14488
12	2021	C	12.00	1013	11	2021	C	3.75	14479
12	2021	P	3.50	1006	1	2022	C	4.00	14478
11	2021	C	6.25	1001	11	2021	P	3.25	14216
12	2021	C	2.00	1000	1	2022	P	4.00	14103
12	2021	P	2.00	1000	12	2021	C	8.00	14031
12	2021	P	12.00	1000	12	2021	P	2.00	13885
4	2022	C	3.25	1000	3	2022	P	5.00	13787
5	2022	C	3.25	1000	2	2022	C	6.00	13700
6	2022	C	3.25	1000	3	2022	C	7.00	13618
7	2022	C	3.25	1000	11	2021	C	5.50	13386
8	2022	C	3.25	1000	11	2021	C	4.25	13282
9	2022	C	3.25	1000	12	2022	C	5.25	13243
10	2022	C	3.25	1000	3	2022	C	9.00	13120
2	2022	C	10.00	999	12	2022	C	4.50	13115
					11	2021	P	4.75	13112.25

Source: CME, ICE

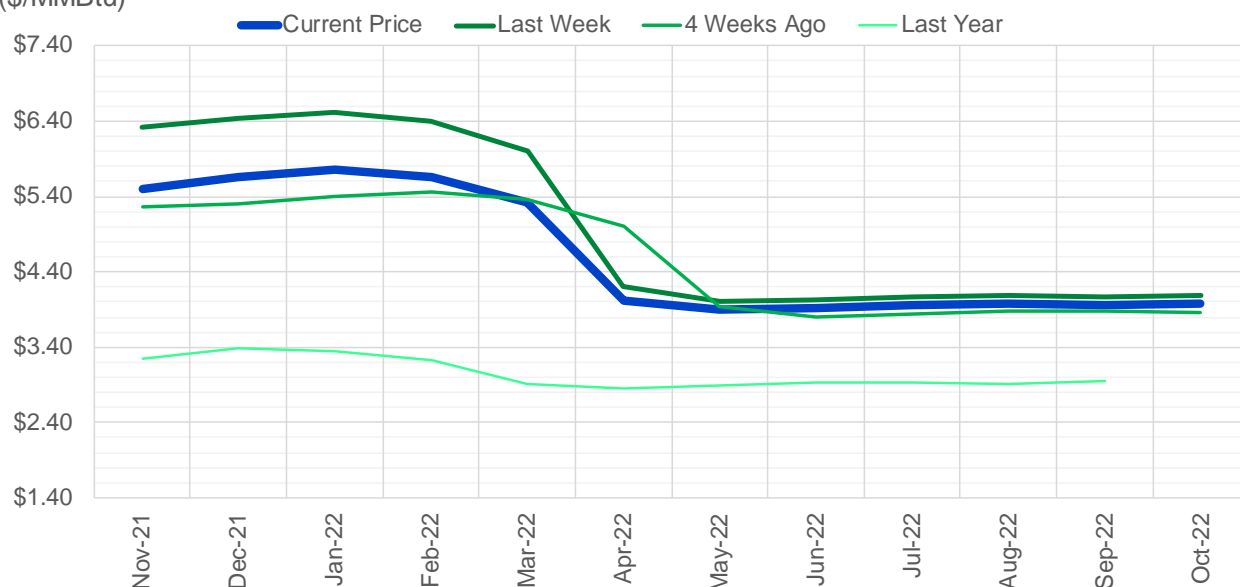
## Nat Gas Futures Open Interest CME, and ICE Combined

CME Henry Hub Futures (10,000 MMBtu)				ICE Henry Hub Futures Contract Equivalent (10,000 MM			
	Current	Prior	Daily Change		Current	Prior	Daily Change
NOV 21	112660	137931	-25271	NOV 21	87983	90558	-2575
DEC 21	138022	124746	13276	DEC 21	85312	86268	-956
JAN 22	225606	210381	15225	JAN 22	91511	92179	-668
FEB 22	67268	65219	2049	FEB 22	68881	69293	-412
MAR 22	144185	141549	2636	MAR 22	74535	74364	170
APR 22	117259	118754	-1495	APR 22	75279	74890	390
MAY 22	110169	112120	-1951	MAY 22	70851	70700	151
JUN 22	38564	38536	28	JUN 22	54499	54397	102
JUL 22	40368	38178	2190	JUL 22	56634	56680	-46
AUG 22	29816	30224	-408	AUG 22	55984	56038	-55
SEP 22	34599	35308	-709	SEP 22	56771	56559	212
OCT 22	82598	81220	1378	OCT 22	62729	62736	-7
NOV 22	33902	31002	2900	NOV 22	48495	48480	15
DEC 22	25475	25971	-496	DEC 22	51757	51702	55
JAN 23	28430	25952	2478	JAN 23	38801	38535	267
FEB 23	10735	10410	325	FEB 23	31996	31861	135
MAR 23	14428	13919	509	MAR 23	33635	33469	166
APR 23	13350	13243	107	APR 23	33696	33602	94
MAY 23	7320	7777	-457	MAY 23	32863	32095	768
JUN 23	6748	6646	102	JUN 23	29784	29823	-39
JUL 23	4655	4490	165	JUL 23	30002	30027	-25
AUG 23	4115	3880	235	AUG 23	29877	29872	6
SEP 23	4302	4450	-148	SEP 23	29027	29065	-38
OCT 23	5905	5689	216	OCT 23	32022	32054	-32
NOV 23	3000	2807	193	NOV 23	30318	30373	-55
DEC 23	3672	2687	985	DEC 23	27834	28257	-423
JAN 24	1370	1222	148	JAN 24	15765	15667	98
FEB 24	1200	1181	19	FEB 24	13444	13375	69
MAR 24	4025	3964	61	MAR 24	18170	18163	7
APR 24	3419	3573	-154	APR 24	12531	12491	40



(\$/MMBtu)

### Nat Gas Term Structure



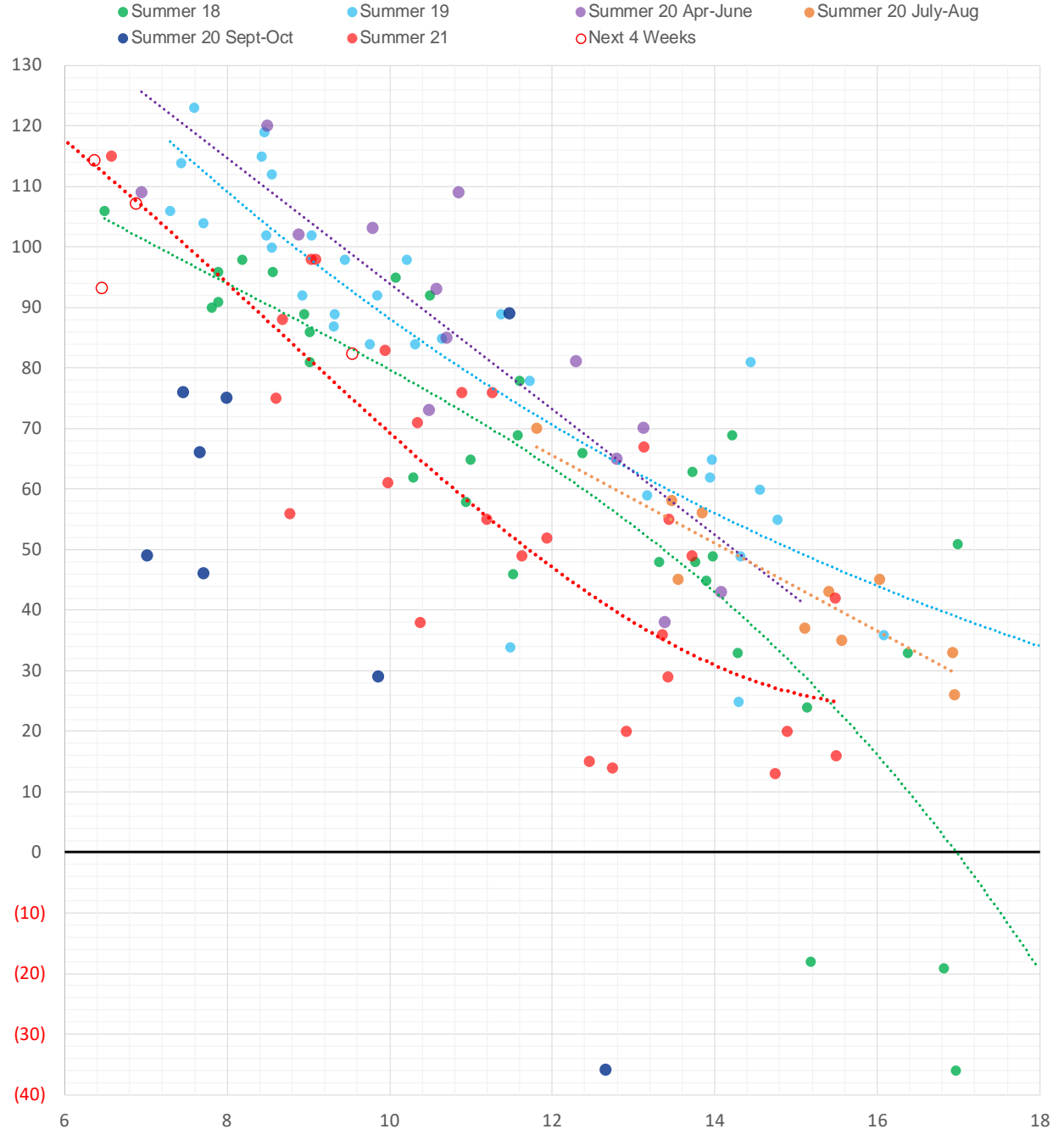
	Nov-21	Dec-21	Jan-22	Feb-22	Mar-22	Apr-22	May-22	Jun-22	Jul-22	Aug-22	Sep-22	Oct-22
<b>Current Price</b>	<b>\$5.505</b>	<b>\$5.663</b>	<b>\$5.761</b>	<b>\$5.656</b>	<b>\$5.324</b>	<b>\$4.015</b>	<b>\$3.891</b>	<b>\$3.925</b>	<b>\$3.965</b>	<b>\$3.972</b>	<b>\$3.955</b>	<b>\$3.986</b>
Last Week	\$6.312	\$6.432	\$6.522	\$6.407	\$5.996	\$4.196	\$4.006	\$4.035	\$4.074	\$4.078	\$4.058	\$4.088
vs. Last Week	-\$0.807	-\$0.769	-\$0.761	-\$0.751	-\$0.672	-\$0.181	-\$0.115	-\$0.110	-\$0.109	-\$0.106	-\$0.103	-\$0.102
4 Weeks Ago	\$5.260	\$5.305	\$5.398	\$5.465	\$5.370	\$5.013	\$3.939	\$3.810	\$3.839	\$3.871	\$3.879	\$3.863
vs. 4 Weeks Ago	\$0.245	\$0.358	\$0.363	\$0.191	-\$0.046	-\$0.998	-\$0.048	\$0.115	\$0.126	\$0.101	\$0.076	\$0.123
Last Year	\$2.855	\$3.247	\$3.379	\$3.341	\$3.224	\$2.905	\$2.855	\$2.884	\$2.925	\$2.934	\$2.920	\$2.946
vs. Last Year	\$2.650	\$2.416	\$2.382	\$2.315	\$2.100	\$1.110	\$1.036	\$1.041	\$1.040	\$1.038	\$1.035	\$1.040

	Units	Cash Settled	Prompt Settle	Cash to Prompt
AGT Citygate	\$/MMBtu	5.65	8.88	3.23
TETCO M3	\$/MMBtu	4.88	5.53	0.65
FGT Zone 3	\$/MMBtu	4.92	5.85	0.93
Zone 6 NY	\$/MMBtu	4.92	5.65	0.73
Chicago Citygate	\$/MMBtu	5.15	5.62	0.47
Michcon	\$/MMBtu	5.18	5.44	0.26
Columbia TCO Pool	\$/MMBtu	4.79	5.11	0.32
Ventura	\$/MMBtu	5.06	5.84	0.78
Rockies/Opal	\$/MMBtu	5.47	5.54	0.07
El Paso Permian Basin	\$/MMBtu	4.73	5.35	0.62
Socal Citygate	\$/MMBtu	6.00	6.10	0.10
Malin	\$/MMBtu	5.59	6.08	0.49
Houston Ship Channel	\$/MMBtu	5.22	5.61	0.39
Henry Hub Cash	\$/MMBtu	5.42	5.51	0.09
AECO Cash	C\$/GJ	3.88	3.95	0.06
Station2 Cash	C\$/GJ	0.25	6.81	6.56
Dawn Cash	C\$/GJ	5.14	5.55	0.41

Source: CME, Bloomberg

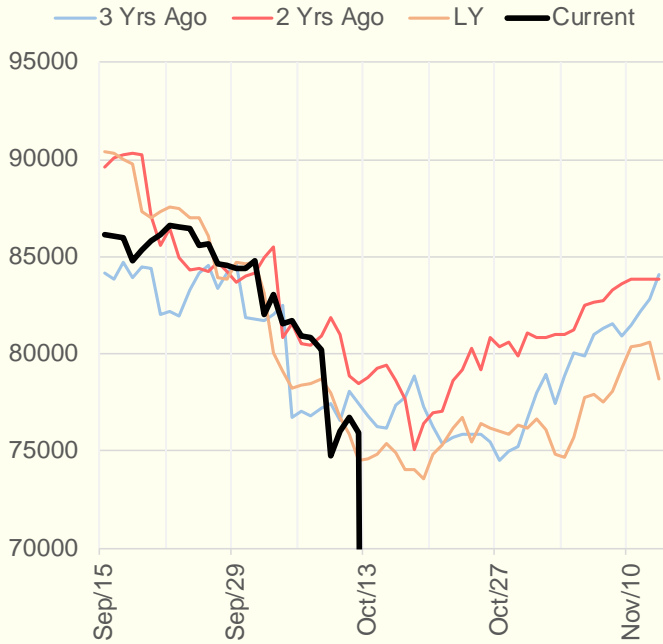
	Units	Current Price	vs. Last Week	vs. 4 Weeks Ago	vs. Last Year
NatGas Jul21/Oct21	\$/MMBtu	2.224	▲ 0.000	▲ 0.381	▲ 2.197
NatGas Oct21/Nov21	\$/MMBtu	-0.251	▼ -0.085	▼ -0.298	▼ -0.307
NatGas Oct21/Jan22	\$/MMBtu	0.013	▼ -0.034	▼ -0.203	▼ -0.268
NatGas Apr22/Oct22	\$/MMBtu	-0.026	▲ 0.040	▲ 0.034	▼ -0.033
WTI Crude	\$/Bbl	80.44	▲ 3.010	▲ 7.830	▲ 39.400
Brent Crude	\$/Bbl	83.18	▲ 2.100	▲ 7.720	▲ 39.860
Fuel Oil, NY Harbour 1%	\$/Bbl	97.18	▲ 0.000	▲ 0.000	▲ 0.000
Heating Oil	cents/Gallon	252.11	▲ 7.910	▲ 31.580	▲ 132.860
Propane, Mt. Bel	cents/Gallon	1.44	▼ -0.056	▲ 0.184	▲ 0.920
Ethane, Mt. Bel	cents/Gallon	0.44	▼ -0.001	▲ 0.042	▲ 0.230
Coal, PRB	\$/MTon	12.30	▲ 0.000	▲ 0.000	▲ 0.000
Coal, PRB	\$/MMBtu	0.70			
Coal, ILB	\$/MTon	31.05	▲ 0.000	▲ 0.000	▲ 0.000
Coal, ILB	\$/MMBtu	1.32			

## Weather Storage Model - Next 4 Week Forecast

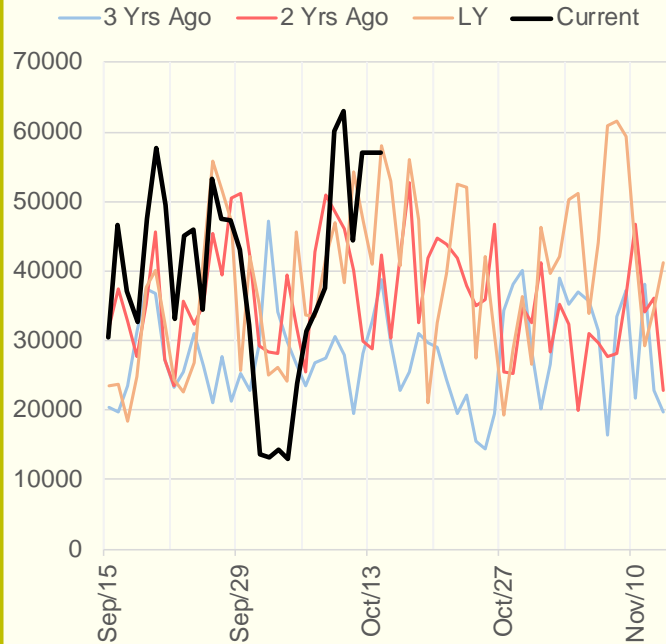


The risk of trading futures and options and other derivatives involves a substantial risk of loss and is not suitable for all persons. Each person must consider whether a particular trade, combination of trades, or strategy is suitable for that person's financial means and objectives. Past results are not necessarily indicative of future results. This communication may contain links to third party websites which are not under the control of and are not maintained by ION Energy Group, and ION Energy Group is not responsible for their content.

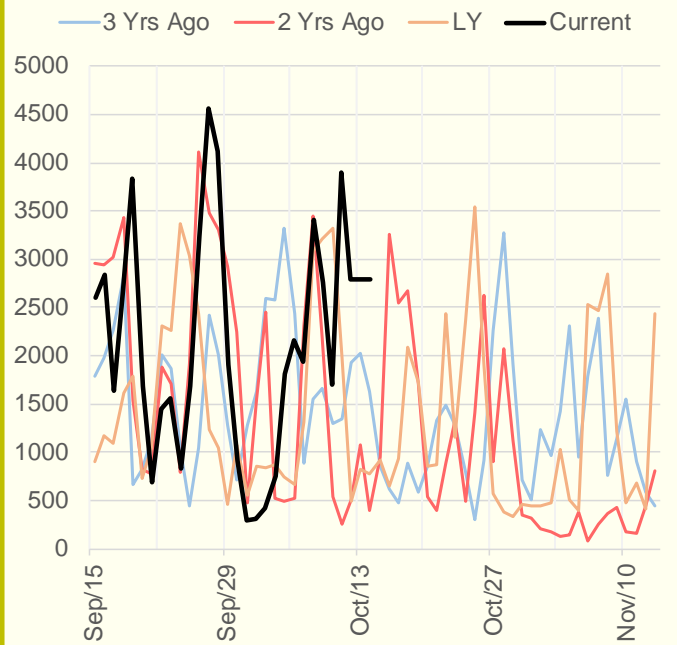
### NRC Nuclear Daily Output



### US Wind



### CALI Wind



### TEXAS Wind

