

	Current	Δ from YD	Δ from 7D Avg
Nat Gas Prompt	\$ 5.13 ▲	\$ 0.15 ▲	\$ 0.14

	Current	Δ from YD	Δ from 7D Avg
WTI Prompt	\$ 73.13 ▼	\$ (0.17) ▲	\$ 1.4

	Current	Δ from YD	Δ from 7D Avg
Brent Prompt	\$ 77.20 ▼	\$ (0.05) ▲	\$ 1.8

### Page Menu

[Short-term Weather Model Outlooks](#)

[Lower 48 Component Models](#)

[Regional S/D Models Storage Projection](#)

[Weather Model Storage Projection](#)

[Supply – Demand Trends](#)

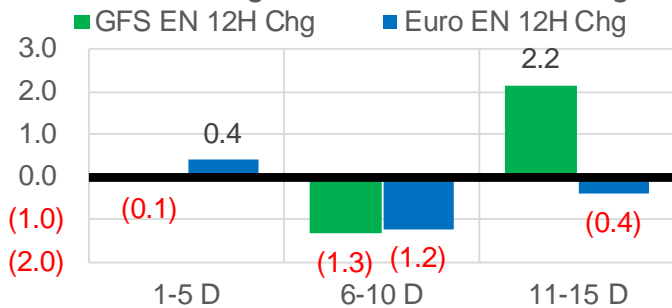
[Nat Gas Options Volume and Open Interest](#)

[Nat Gas Futures Open Interest](#)

[Price Summary](#)

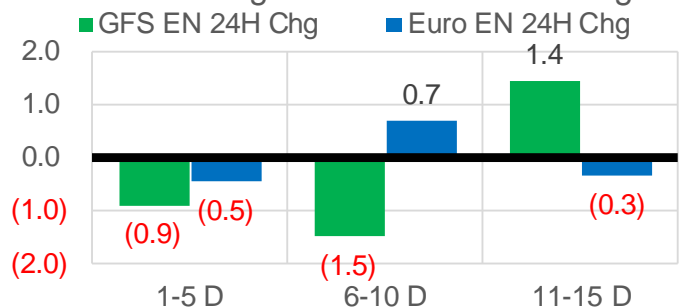
### Vs. 12H Ago

L48 Region - 00z TDD vs 12H Ago



### Vs. 24H Ago

L48 Region - 00z TDD vs 24H Ago



	Current	Δ from YD	Δ from 7D Avg
US Dry Production	91.3 ▼	-1.02 ▼	-1.40

	Current	Δ from YD	Δ from 7D Avg
US Power Burns	29.1 ▼	-1.57 ▼	-4.17

	Current	Δ from YD	Δ from 7D Avg
US ResComm	8.7 ▼	-1.49 ▲	0.53

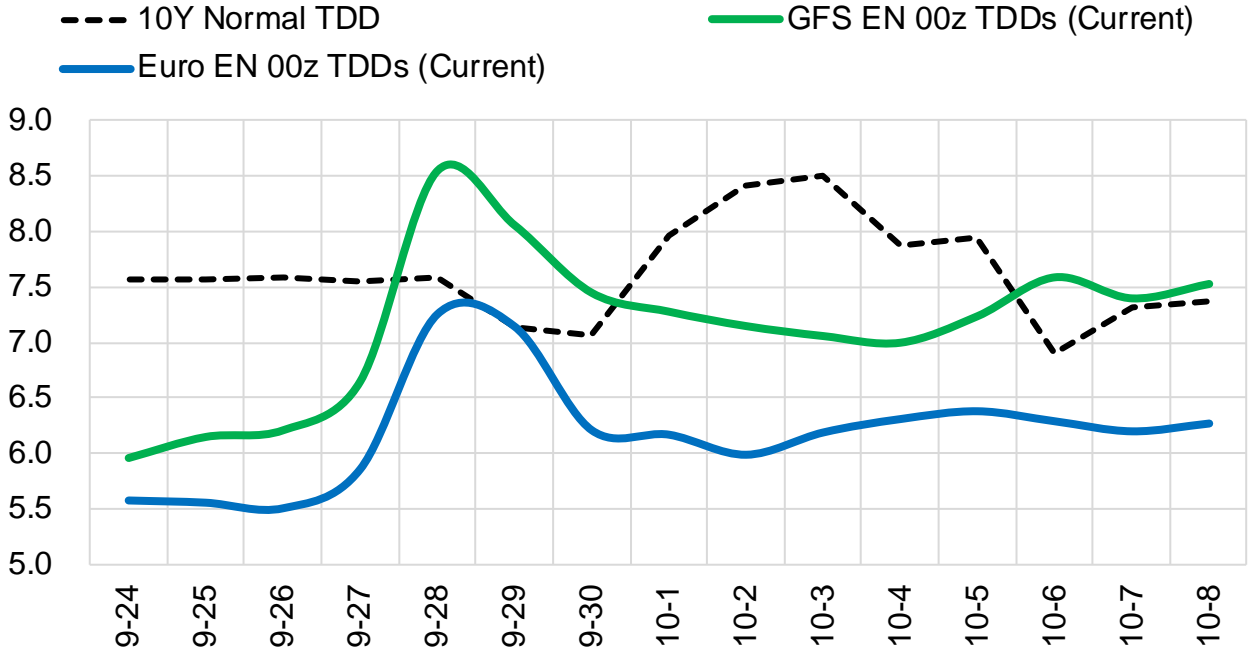
	Current	Δ from YD	Δ from 7D Avg
Canadian Imports	5.6 ▲	0.08 ▲	0.44

	Current	Δ from YD	Δ from 7D Avg
Net LNG Exports	10.5 ▲	0.93 ▲	0.54

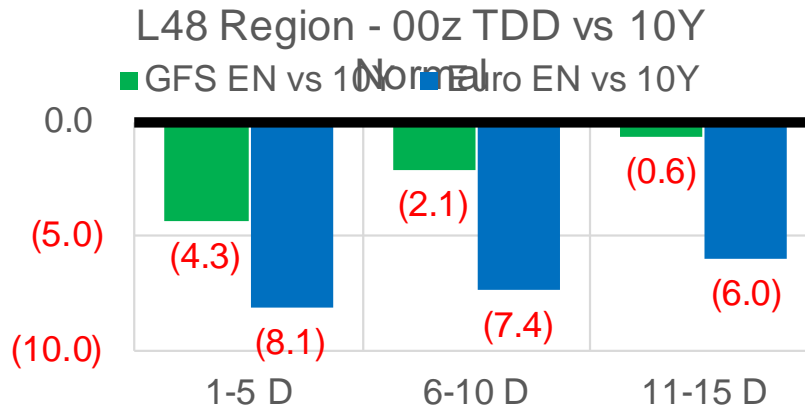
	Current	Δ from YD	Δ from 7D Avg
Mexican Exports	6.7 ▼	-0.22 ▼	-0.14

## Short-term Weather Model Outlooks (00z)

### L48 Region



## Vs. 10Y Normal



Source: WSI, Bloomberg

## Lower 48 Component Models

### Daily Balances

	18-Sep	19-Sep	20-Sep	21-Sep	22-Sep	23-Sep	24-Sep	DoD	vs. 7D
<b>Lower 48 Dry Production</b>	<b>93.1</b>	<b>92.9</b>	<b>93.1</b>	<b>92.6</b>	<b>91.9</b>	<b>92.3</b>	<b>91.3</b>	▼ -1.0	▼ -1.3
<b>Canadian Imports</b>	<b>5.0</b>	<b>4.9</b>	<b>4.8</b>	<b>5.2</b>	<b>5.5</b>	<b>5.5</b>	<b>5.6</b>	▲ 0.1	▲ 0.4
L48 Power	33.5	33.1	34.3	33.4	32.3	30.6	29.1	▼ -1.6	▼ -3.8
L48 Residential & Commercial	6.9	7.0	7.7	8.1	9.5	10.2	8.7	▼ -1.5	▲ 0.4
L48 Industrial	20.3	20.1	20.2	20.5	21.1	21.8	22.3	▲ 0.5	▲ 1.6
L48 Lease and Plant Fuel	5.1	5.1	5.1	5.1	5.1	5.1	5.0	▼ -0.1	▼ -0.1
L48 Pipeline Distribution	2.1	2.0	2.1	2.1	2.1	2.1	1.9	▼ -0.2	▼ -0.2
<b>L48 Regional Gas Consumption</b>	<b>67.9</b>	<b>67.3</b>	<b>69.4</b>	<b>69.2</b>	<b>70.1</b>	<b>69.7</b>	<b>66.9</b>	▼ -2.8	▼ -2.0
<b>Net LNG Delivered</b>	<b>10.59</b>	<b>10.54</b>	<b>9.45</b>	<b>9.82</b>	<b>10.24</b>	<b>9.54</b>	<b>10.47</b>	▲ 0.9	▲ 0.4
<b>Total Mexican Exports</b>	<b>6.6</b>	<b>6.5</b>	<b>6.8</b>	<b>7.0</b>	<b>7.1</b>	<b>6.9</b>	<b>6.7</b>	▼ -0.2	▼ -0.2
<b>Implied Daily Storage Activity</b>	<b>12.9</b>	<b>13.5</b>	<b>12.3</b>	<b>11.8</b>	<b>10.0</b>	<b>11.7</b>	<b>12.8</b>		
<b>EIA Reported Daily Storage Activity</b>									
<b>Daily Model Error</b>									

### EIA Storage Week Balances

	20-Aug	27-Aug	3-Sep	10-Sep	17-Sep	24-Sep	WoW	vs. 4W
<b>Lower 48 Dry Production</b>	<b>92.4</b>	<b>93.0</b>	<b>90.9</b>	<b>91.2</b>	<b>91.7</b>	<b>92.7</b>	▲ 1.0	▲ 1.0
<b>Canadian Imports</b>	<b>5.0</b>	<b>5.3</b>	<b>5.0</b>	<b>4.8</b>	<b>5.2</b>	<b>5.1</b>	▼ 0.0	▲ 0.1
L48 Power	39.7	41.9	38.1	33.7	35.0	33.2	▼ -1.8	▼ -4.0
L48 Residential & Commercial	7.6	7.8	7.5	7.0	7.3	8.1	▲ 0.9	▲ 0.7
L48 Industrial	20.9	20.9	18.9	19.6	21.0	20.7	▼ -0.4	▲ 0.6
L48 Lease and Plant Fuel	5.1	5.1	5.0	5.0	5.1	5.1	▲ 0.1	▲ 0.0
L48 Pipeline Distribution	2.3	2.4	2.2	2.1	2.2	2.1	▼ 0.0	▼ -0.1
<b>L48 Regional Gas Consumption</b>	<b>75.6</b>	<b>78.2</b>	<b>71.7</b>	<b>67.5</b>	<b>70.5</b>	<b>69.3</b>	▼ -1.2	▼ -2.7
<b>Net LNG Exports</b>	<b>10.9</b>	<b>10.6</b>	<b>10.5</b>	<b>11.0</b>	<b>10.2</b>	<b>9.9</b>	▼ -0.3	▼ -0.6
<b>Total Mexican Exports</b>	<b>6.8</b>	<b>6.8</b>	<b>7.0</b>	<b>6.7</b>	<b>6.6</b>	<b>6.8</b>	▲ 0.2	▲ 0.0
<b>Implied Daily Storage Activity</b>	<b>4.2</b>	<b>2.8</b>	<b>6.7</b>	<b>10.9</b>	<b>9.5</b>	<b>11.9</b>	<b>2.4</b>	
<b>EIA Reported Daily Storage Activity</b>	<b>4.1</b>	<b>2.9</b>	<b>7.4</b>	<b>11.9</b>	<b>10.9</b>			
<b>Daily Model Error</b>	<b>0.1</b>	<b>-0.1</b>	<b>-0.7</b>	<b>-1.0</b>	<b>-1.4</b>			

### Monthly Balances

	2Yr Ago Sep-19	LY Sep-20	May-21	Jun-21	Jul-21	Aug-21	MTD Sep-21	MoM	vs. LY
<b>Lower 48 Dry Production</b>	<b>94.4</b>	<b>89.1</b>	<b>93.1</b>	<b>93.4</b>	<b>92.4</b>	<b>92.2</b>	<b>91.8</b>	▼ -0.4	▲ 2.6
<b>Canadian Imports</b>	<b>4.7</b>	<b>3.8</b>	<b>4.5</b>	<b>4.8</b>	<b>5.2</b>	<b>5.1</b>	<b>5.0</b>	▼ -0.1	▲ 1.2
L48 Power	36.3	34.4	26.8	35.9	39.6	40.2	33.8	▼ -6.4	▼ -0.6
L48 Residential & Commercial	8.2	8.8	12.8	8.9	8.6	7.7	7.5	▼ -0.2	▼ -1.2
L48 Industrial	22.5	20.3	20.8	20.6	19.6	20.1	20.4	▲ 0.3	▲ 0.0
L48 Lease and Plant Fuel	5.1	4.9	5.1	5.1	5.1	5.1	5.1	▼ 0.0	▲ 0.1
L48 Pipeline Distribution	2.2	2.2	2.1	2.2	2.3	2.3	2.1	▼ -0.2	▼ -0.1
<b>L48 Regional Gas Consumption</b>	<b>74.5</b>	<b>70.6</b>	<b>67.6</b>	<b>72.7</b>	<b>75.1</b>	<b>75.4</b>	<b>68.8</b>	▼ -6.6	▼ -1.8
<b>Net LNG Exports</b>	<b>6.2</b>	<b>5.9</b>	<b>10.8</b>	<b>10.2</b>	<b>10.8</b>	<b>10.5</b>	<b>10.4</b>	▼ -0.1	▲ 4.4
<b>Total Mexican Exports</b>	<b>5.3</b>	<b>6.1</b>	<b>6.8</b>	<b>7.4</b>	<b>7.1</b>	<b>6.9</b>	<b>6.7</b>	▼ -0.1	▲ 0.6
<b>Implied Daily Storage Activity</b>	<b>13.2</b>	<b>10.2</b>	<b>12.4</b>	<b>8.0</b>	<b>4.6</b>	<b>4.5</b>	<b>10.9</b>		
<b>EIA Reported Daily Storage Activity</b>									
<b>Daily Model Error</b>									

Source: Bloomberg, analytix.ai

## Daily Average Generation Data

### Nuclear Generation Daily Average - GWh (NRC)

	16-Sep	17-Sep	18-Sep	19-Sep	20-Sep	21-Sep	22-Sep	DoD	vs. 7D
NRC Nuclear Daily Output	86.1	86.0	84.8	85.4	85.8	86.2	86.6	0.5	0.9
NRC Nuclear Max Capacity	104.9	104.9	104.9	104.9	104.9	104.9	104.9	0.0	0.0
NRC Nuclear Outage	18.8	18.9	20.1	19.5	19.0	18.7	18.3	-0.5	-0.9
NRC % Nuclear Cap Utilization	87.5	87.4	86.2	86.8	87.3	87.6	88.1	0.5	0.9

### Wind Generation Daily Average - MWh (EIA)

	16-Sep	17-Sep	18-Sep	19-Sep	20-Sep	21-Sep	22-Sep	DoD	vs. 7D
CALI Wind	2839	1645	2681	3843	1687	681	1454	773	-775
TEXAS Wind	8035	9546	4741	6921	14461	15903	5860	-10044	-4075
US Wind	46466	37154	32631	47333	57480	49488	33230	-16258	-11862

### Generation Daily Average - MWh (EIA)

	16-Sep	17-Sep	18-Sep	19-Sep	20-Sep	21-Sep	22-Sep	DoD	vs. 7D
US Wind	46466	37154	32631	47333	57480	49488	33230	-16258	-11862
US Solar	12757	11260	12150	12798	12291	10385	12566	2181	626
US Petroleum	2257	2897	2356	2542	3067	2632	2491	-141	-134
US Other	9030	9153	9164	9122	8907	8636	8882	246	-120
US Coal	115063	118603	115190	106176	109686	109937	107259	-2678	-5183
US Nuke	88175	88162	86756	87697	88563	89207	89642	435	1549
US Hydro	24428	25702	23362	22499	25572	26638	26672	34	1972
<b>US Gas</b>	<b>182813</b>	<b>191964</b>	<b>183511</b>	<b>168609</b>	<b>176790</b>	<b>173161</b>	<b>171984</b>	<b>-1177</b>	<b>-7491</b>

See National Wind and Nuclear daily charts

Source: Bloomberg, analytix.ai

## Storage Week Average Generation Data

### Nuclear Generation Weekly Average - GWh (NRC)

	20-Aug	27-Aug	3-Sep	10-Sep	17-Sep	24-Sep	WoW	WoW Bcf/d Impact
NRC Nuclear Daily Output	92.4	91.9	90.2	90.3	86.7	85.9	-0.8	0.1
NRC Nuclear Max Capacity	104.9	104.9	104.9	104.9	104.9	104.9	0.0	
NRC Nuclear Outage	12.5	12.9	14.7	14.6	18.2	19.0	0.8	
NRC % Nuclear Cap Utilization	0.1	0.1	0.1	0.1	0.1	0.1	0.0	

### Wind Generation Weekly Average - MWh (EIA)

	20-Aug	27-Aug	3-Sep	10-Sep	17-Sep	24-Sep	WoW	WoW Bcf/d Impact
CALI Wind	3210	2052	2247	1236	2083	1921	-163	0.0
TEXAS Wind	7171	12600	7534	7327	9541	9042	-499	0.1
US Wind	29243	41912	35441	30659	42355	41506	-848	0.2
					11695.5			
					38%			

### Generation Weekly Average - MWh (EIA)

	20-Aug	27-Aug	3-Sep	10-Sep	17-Sep	24-Sep	WoW	WoW Bcf/d Impact
US Wind	29243	41912	35441	30659	42355	41506	-848	<b>0.2</b>
US Solar	12828	14536	13410	14316	14094	12002	-2091	<b>0.4</b>
US Petroleum	4466	5323	3135	2072	2470	2639	170	<b>0.0</b>
US Other	10104	10131	9766	8934	9247	8964	-283	0.1
US Coal	138055	136177	136318	116993	115066	110587	-4479	0.8
US Nuke	95157	94358	92365	93162	89425	88524	-901	<b>0.2</b>
US Hydro	28988	30621	28181	26944	24139	25302	1163	-0.2
<b>US Gas</b>	<b>212121</b>	<b>216025</b>	<b>205503</b>	<b>181094</b>	<b>182007</b>	<b>176857</b>	<b>-5150</b>	0.9

See National Wind and Nuclear daily charts

Source: Bloomberg, analytix.ai

## Monthly Average Generation Data

### Nuclear Generation Monthly Average - GWh (NRC)

	2Yr Ago	LY					MTD		
	Same 30 days	Same 30 days	Jun-21	Jul-21	Aug-21	Sep-21	Last 30 days	MoM (MTD vs LY)	Last 30 days YoY
NRC Nuclear Daily Output	90.8	89.7	88.7	90.1	91.5	87.8	88.3	-3.7	-1.4
NRC Nuclear Max Capacity	104.9	104.9	104.9	104.9	104.9	104.9	104.9	0.0	0.0
NRC Nuclear Outage	14.1	15.2	16.2	14.8	13.4	17.1	16.5	3.7	1.4
NRC % Nuclear Cap Utilization	92.3	91.2	90.2	91.6	93.0	89.3	89.8	-3.8	-1.4

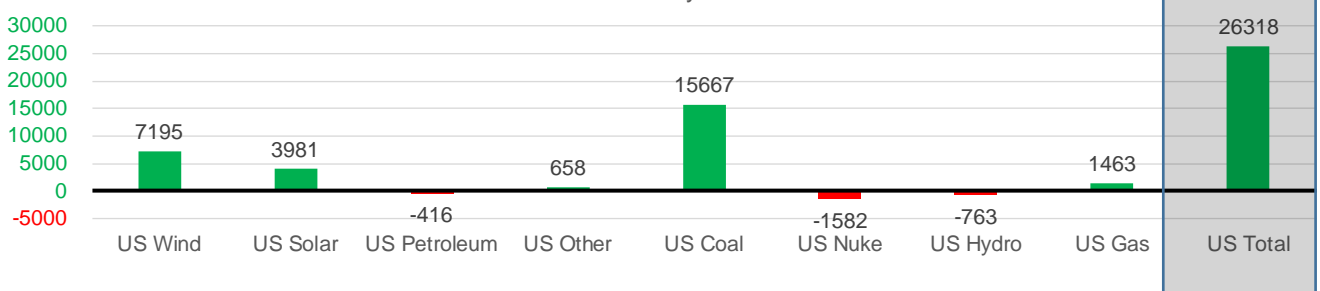
### Wind Generation Monthly Average - MWh (EIA)

	2Yr Ago	LY					MTD		
	Same 30 days	Same 30 days	Jun-21	Jul-21	Aug-21	Sep-21	Last 30 days	MoM (MTD vs LY)	Last 30 days YoY
CALI Wind	2135	1524	2881	2338	2442	1862	1878	-580	355
TEXAS Wind	7488	6570	9509	7217	9901	8756	8218	-1146	1648
US Wind	30568	30135	36864	29217	35830	38459	37330	2629	7195

### Generation Monthly Average - MWh (EIA)

	2Yr Ago	LY					MTD		
	Same 30 days	Same 30 days	Jun-21	Jul-21	Aug-21	Sep-21	Last 30 days	MoM (MTD vs LY)	Last 30 days YoY
US Wind	30568	30135	36864	29217	35830	38459	37330	▼-1129.1	▲ 7195
US Solar	8398	9497	14577	14195	13846	13448	13478	▲ 29.5	▲ 3981
US Petroleum	4397	3120	4155	4233	4484	2391	2704	▲ 313	▼ -416
US Other	8145	8598	8208	9327	9929	9037	9256	▲ 219	▲ 658
US Coal	115638	104479	122034	137228	137655	114813	120146	▲ 5333	▲ 15667
US Nuke	97432	92525	92180	92911	94062	90537	90943	▲ 406	▼ -1582
US Hydro	27827	27102	32566	29941	28532	25777	26340	▲ 563	▼ -763
<b>US Gas</b>	<b>195241</b>	<b>186172</b>	<b>189395</b>	<b>207823</b>	<b>210824</b>	<b>179631</b>	<b>187636</b>	<b>▲ 5734</b>	<b>▲ 1463</b>
<b>US Total</b>	<b>489441</b>	<b>461666</b>	<b>500271</b>	<b>524889</b>	<b>534996</b>	<b>474340</b>	<b>487984</b>	<b>▲ 12597</b>	<b>▲ 26318</b>

Last 30 days YoY



See National Wind and Nuclear daily charts

Source: Bloomberg, analytix.ai

## Regional S/D Models Storage Projection

Week Ending 24-Sep

	Daily Raw Storage	Daily Adjustment Factor	Daily Average Storage Activity (Adjusted) *	Weekly Adjusted Storage Activity
L48	11.6	1.3	12.8	90
East	3.0	0.7	3.6	25
Midwest	5.1	-0.7	4.5	31
Mountain	3.8	-3.6	0.3	2
South Central	-1.1	5.3	4.2	30
Pacific	0.7	-0.4	0.3	2

\*Adjustment Factor is calculated based on historical regional deltas

U.S. underground natural gas storage facilities by type (July 2015)

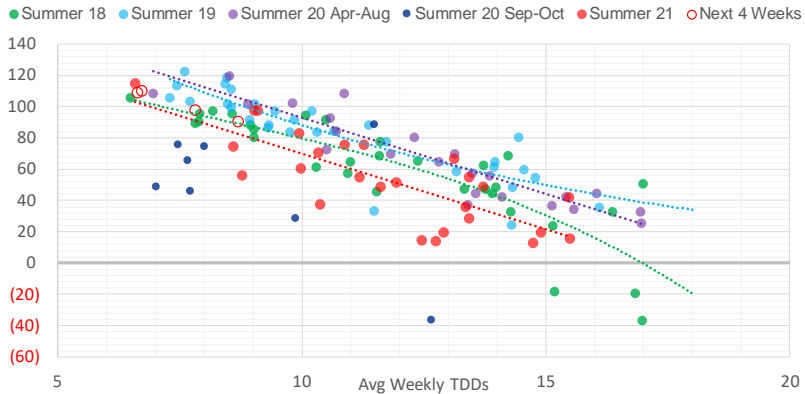


## Weather Model Storage Projection

Next report  
and beyond

Week Ending	GWDDs	Week Storage Projection
24-Sep	8.7	90
01-Oct	6.6	109
08-Oct	6.7	110
15-Oct	7.8	97

**Weather Storage Model - Next 4 Week Forecast**

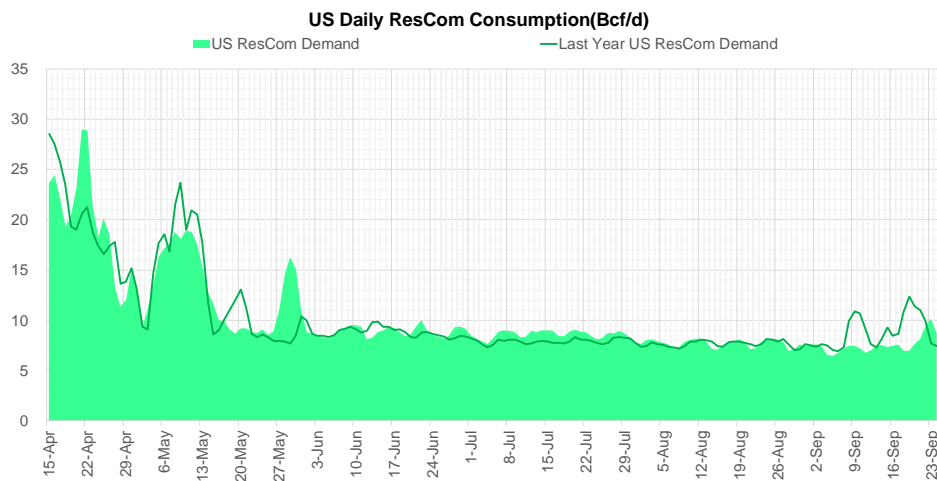
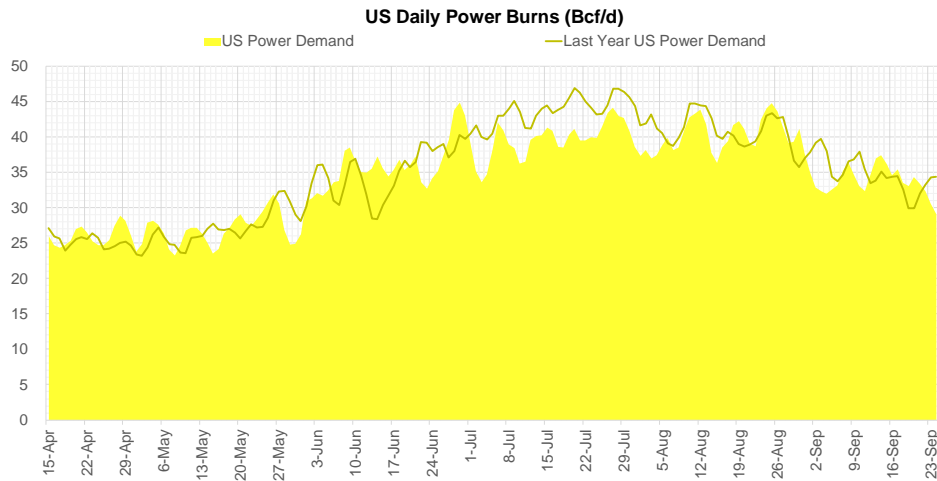
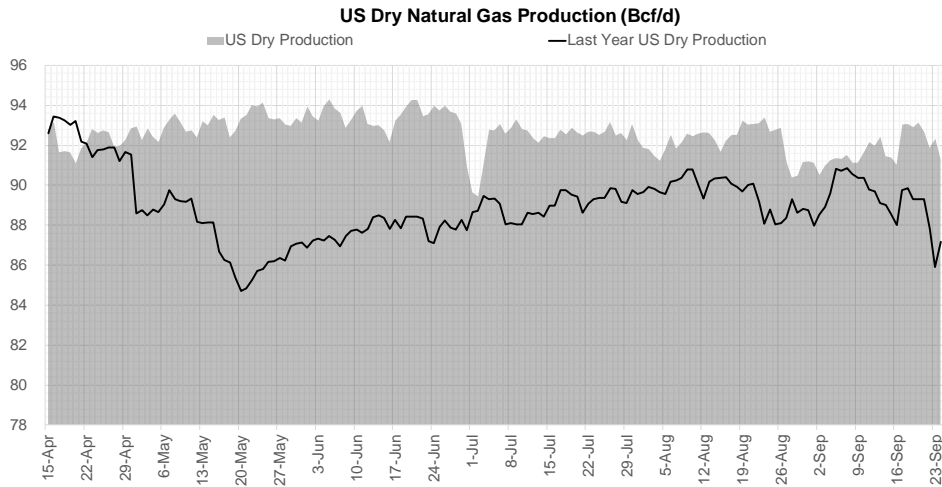


Go to larger image





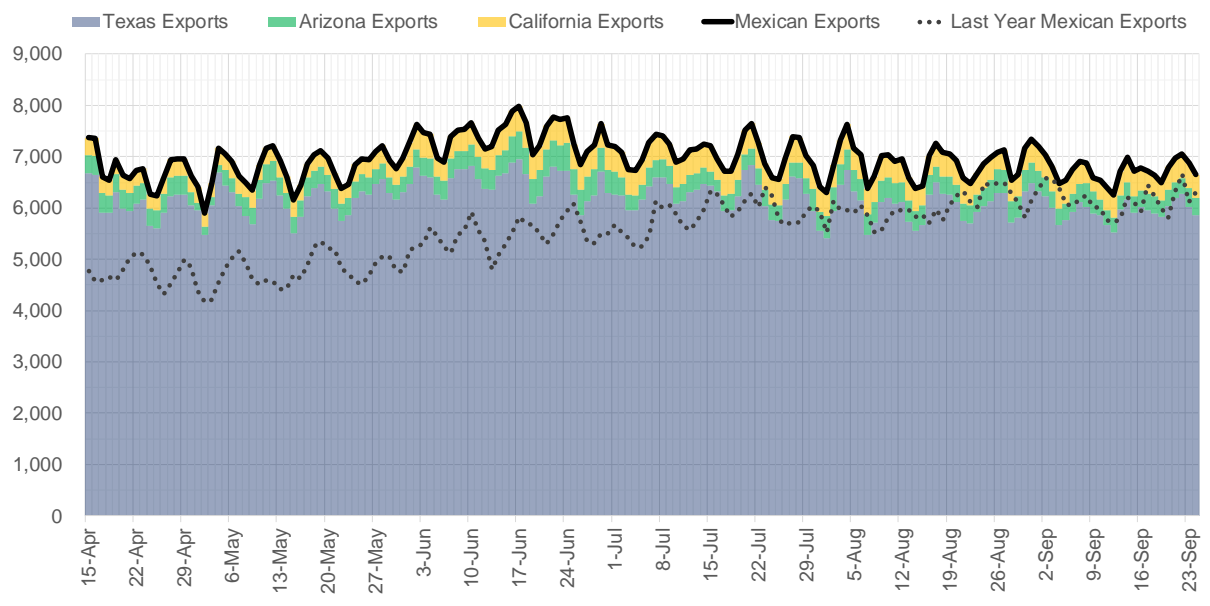
## Supply – Demand Trends



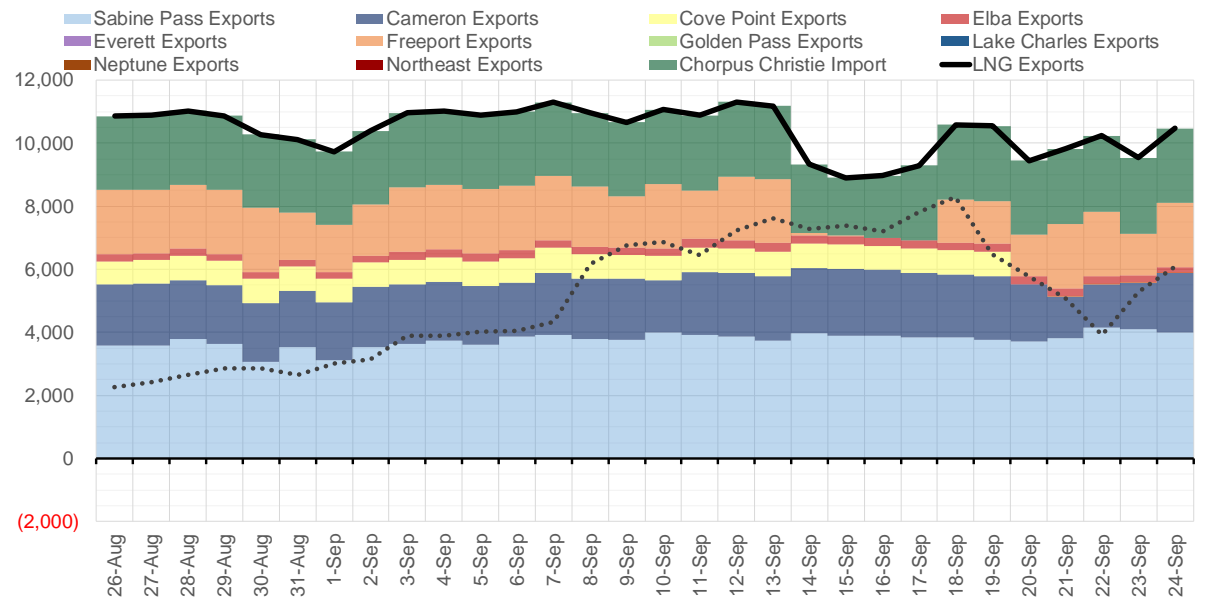
Source: Bloomberg

The risk of trading futures and options and other derivatives involves a substantial risk of loss and is not suitable for all persons. Each person must consider whether a particular trade, combination of trades, or strategy is suitable for that person's financial means and objectives. Past results are not necessarily indicative of future results. This communication may contain links to third party websites which are not under the control of and are not maintained by ION Energy Group, and ION Energy Group is not responsible for their content.

### Mexican Exports (MMcf/d)



### Net LNG Exports - Last 30 days (MMcf/d)



Source: Bloomberg

The risk of trading futures and options and other derivatives involves a substantial risk of loss and is not suitable for all persons. Each person must consider whether a particular trade, combination of trades, or strategy is suitable for that person's financial means and objectives. Past results are not necessarily indicative of future results. This communication may contain links to third party websites which are not under the control of and are not maintained by ION Energy Group, and ION Energy Group is not responsible for their content.

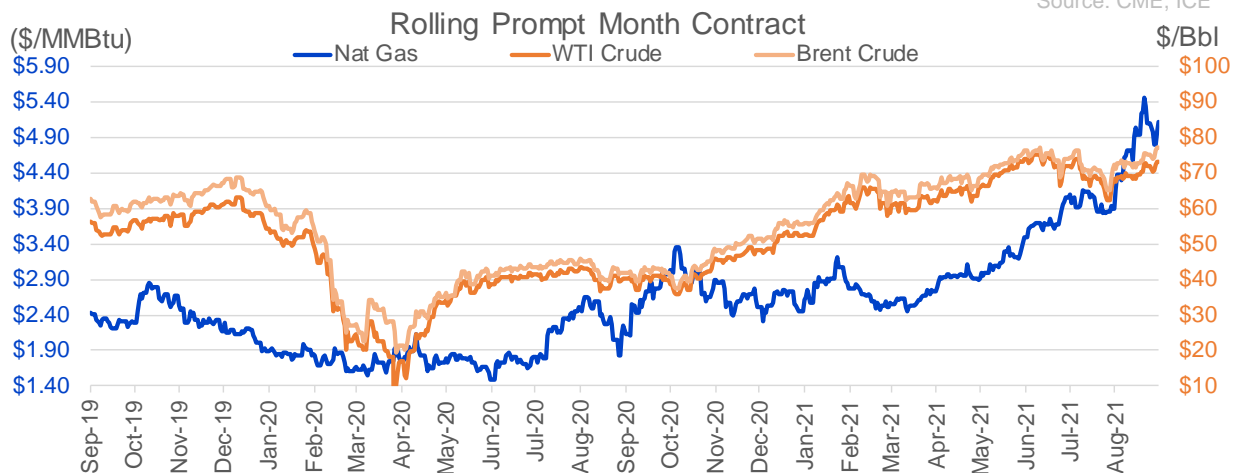
## Nat Gas Options Volume and Open Interest CME, ICE and Nasdaq Combined

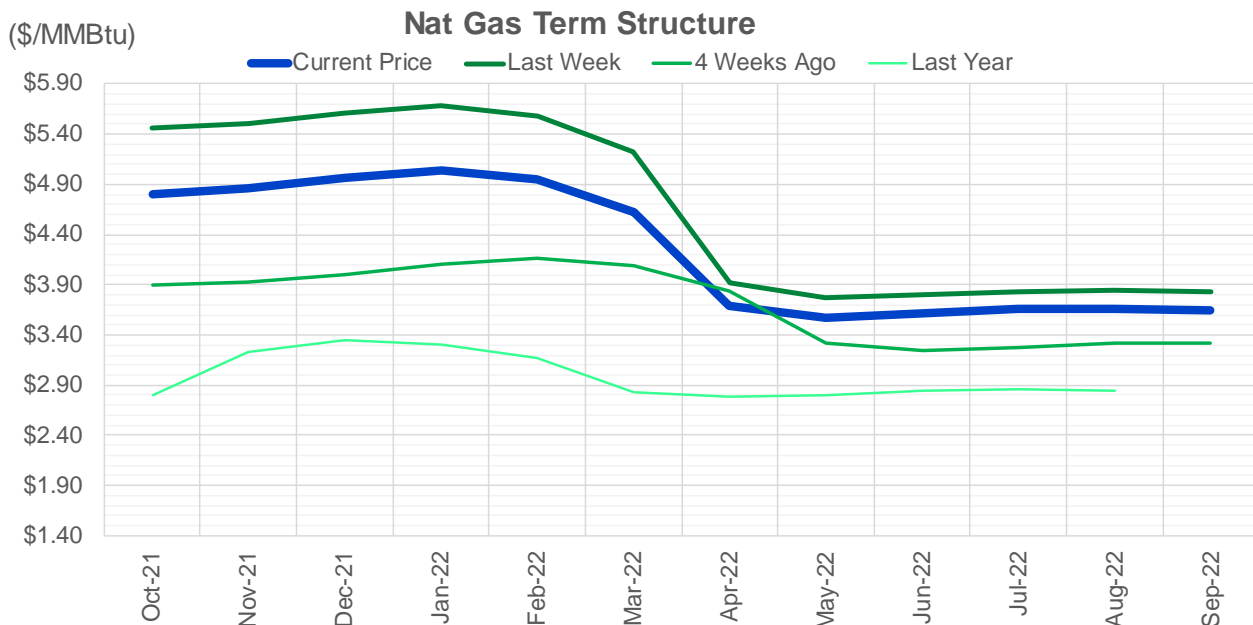
CONTRACT MONTH	CONTRACT YEAR	PUT/CALL	STRIKE	CUMULATIVE VOL	CONTRACT MONTH	CONTRACT YEAR	PUT/CALL	STRIKE	CUMULATIVE OI
10	2021	C	5.25	12460	10	2021	C	5.00	54206
10	2021	C	5.00	9674	10	2021	C	6.00	48831
10	2021	C	5.50	6594	12	2021	P	2.75	42009
10	2021	P	4.75	6096	10	2021	P	3.50	42002
10	2021	P	4.50	5017	10	2021	C	4.00	41741
12	2021	P	3.50	4539	10	2021	C	4.50	39060
3	2022	P	4.25	4240	12	2021	P	2.50	38548
10	2021	C	5.10	4145	10	2021	C	3.50	32999
3	2022	P	3.75	3750	10	2021	C	4.25	32763
11	2021	C	6.00	3214	10	2021	P	3.00	31755
10	2021	C	5.15	3093	11	2021	P	3.00	30655
10	2021	C	5.20	3071	10	2021	P	2.50	29993
11	2021	P	4.50	2850	10	2021	P	2.00	28650
3	2022	P	4.00	2800	10	2021	P	4.00	28479
10	2021	C	6.00	2797	10	2021	C	3.25	28188
12	2021	P	4.25	2650	10	2021	P	2.75	26887
3	2022	C	9.00	2630	3	2022	C	10.00	26843
3	2022	C	8.00	2588	12	2021	P	3.00	26020
12	2021	P	4.00	2553	11	2021	P	4.00	25591
3	2022	C	7.00	2551	10	2021	P	4.25	24893
11	2021	C	5.50	2511	3	2022	C	8.00	24476
2	2022	C	5.00	2394	11	2021	C	4.00	23311
10	2021	P	4.60	2315	11	2021	P	3.50	23055
10	2021	C	5.75	2156	10	2021	P	4.50	23018
3	2022	C	14.00	2000	12	2021	C	4.00	22596
2	2022	C	5.50	1954	12	2021	P	4.00	22188
3	2022	C	5.25	1850	10	2021	P	3.75	22037
10	2021	C	5.40	1820	11	2021	C	7.00	21437
11	2021	P	4.25	1771	11	2021	C	6.00	20806
4	2022	P	2.50	1753	3	2022	C	5.00	19976
10	2021	P	4.25	1708	10	2021	P	2.25	19784
2	2022	C	7.00	1695	4	2022	C	3.00	19760
2	2022	C	8.00	1600	3	2022	P	3.50	19093
3	2022	C	5.00	1597	12	2021	C	6.00	18590
12	2021	C	5.50	1524	10	2021	C	3.00	18486
11	2021	C	7.00	1469	2	2022	P	3.50	18245
11	2021	C	5.75	1467	10	2021	C	5.50	18083
10	2021	P	5.00	1427	1	2022	C	5.00	17986
1	2022	P	4.75	1426	10	2021	P	3.25	17940
1	2022	P	3.50	1398	1	2022	P	3.50	17669
12	2021	C	5.00	1292	2	2022	C	5.00	17028
2	2022	C	7.50	1290	3	2022	P	2.50	16845
11	2021	P	4.00	1279	10	2021	C	3.75	16780
2	2022	C	15.00	1260	3	2022	C	4.00	16485
4	2022	C	4.60	1250	11	2021	C	5.00	16436
8	2022	C	4.60	1250	10	2021	C	5.25	15801
11	2021	C	6.50	1238	2	2022	C	4.00	15800
1	2022	C	8.00	1206	11	2021	C	4.50	15135
12	2021	C	6.00	1137	4	2022	P	2.50	15070
					11	2021	P	3.25	14825.75

Source: CME, ICE

## Nat Gas Futures Open Interest CME, and ICE Combined

CME Henry Hub Futures (10,000 MMBtu)				ICE Henry Hub Futures Contract Equivalent (10,000 MM			
	Current	Prior	Daily Change		Current	Prior	Daily Change
OCT 21	27672	41097	-13425	OCT 21	91968	89489	2479
NOV 21	280003	275144	4859	NOV 21	82756	81142	1614
DEC 21	94343	91594	2749	DEC 21	75920	76607	-687
JAN 22	162094	157533	4561	JAN 22	95363	95050	313
FEB 22	58397	57577	820	FEB 22	69938	70037	-100
MAR 22	123834	122995	839	MAR 22	74627	74881	-254
APR 22	118970	118816	154	APR 22	72754	72859	-105
MAY 22	118204	117435	769	MAY 22	69881	69997	-117
JUN 22	40682	39055	1627	JUN 22	53824	53953	-129
JUL 22	37803	36300	1503	JUL 22	55915	55961	-46
AUG 22	32006	31994	12	AUG 22	54991	55176	-185
SEP 22	34381	34452	-71	SEP 22	55202	55344	-142
OCT 22	87667	87241	426	OCT 22	61764	62161	-396
NOV 22	32297	32302	-5	NOV 22	48033	47935	98
DEC 22	25911	25714	197	DEC 22	51298	51197	101
JAN 23	23025	22756	269	JAN 23	37294	37461	-167
FEB 23	9480	9250	230	FEB 23	30767	30641	127
MAR 23	12312	11869	443	MAR 23	32382	32271	112
APR 23	12265	12003	262	APR 23	30430	30130	300
MAY 23	6730	6694	36	MAY 23	30126	29973	153
JUN 23	6129	6125	4	JUN 23	27957	27809	148
JUL 23	4199	4206	-7	JUL 23	28125	27965	161
AUG 23	3218	3191	27	AUG 23	27908	27748	160
SEP 23	4599	4483	116	SEP 23	27218	27070	148
OCT 23	5685	5790	-105	OCT 23	29488	29312	176
NOV 23	2124	2158	-34	NOV 23	27981	28063	-82
DEC 23	2142	2142	0	DEC 23	27430	27507	-77
JAN 24	1430	1429	1	JAN 24	14987	14932	54
FEB 24	1089	1089	0	FEB 24	12501	12487	14
MAR 24	3342	3192	150	MAR 24	17197	17421	-225





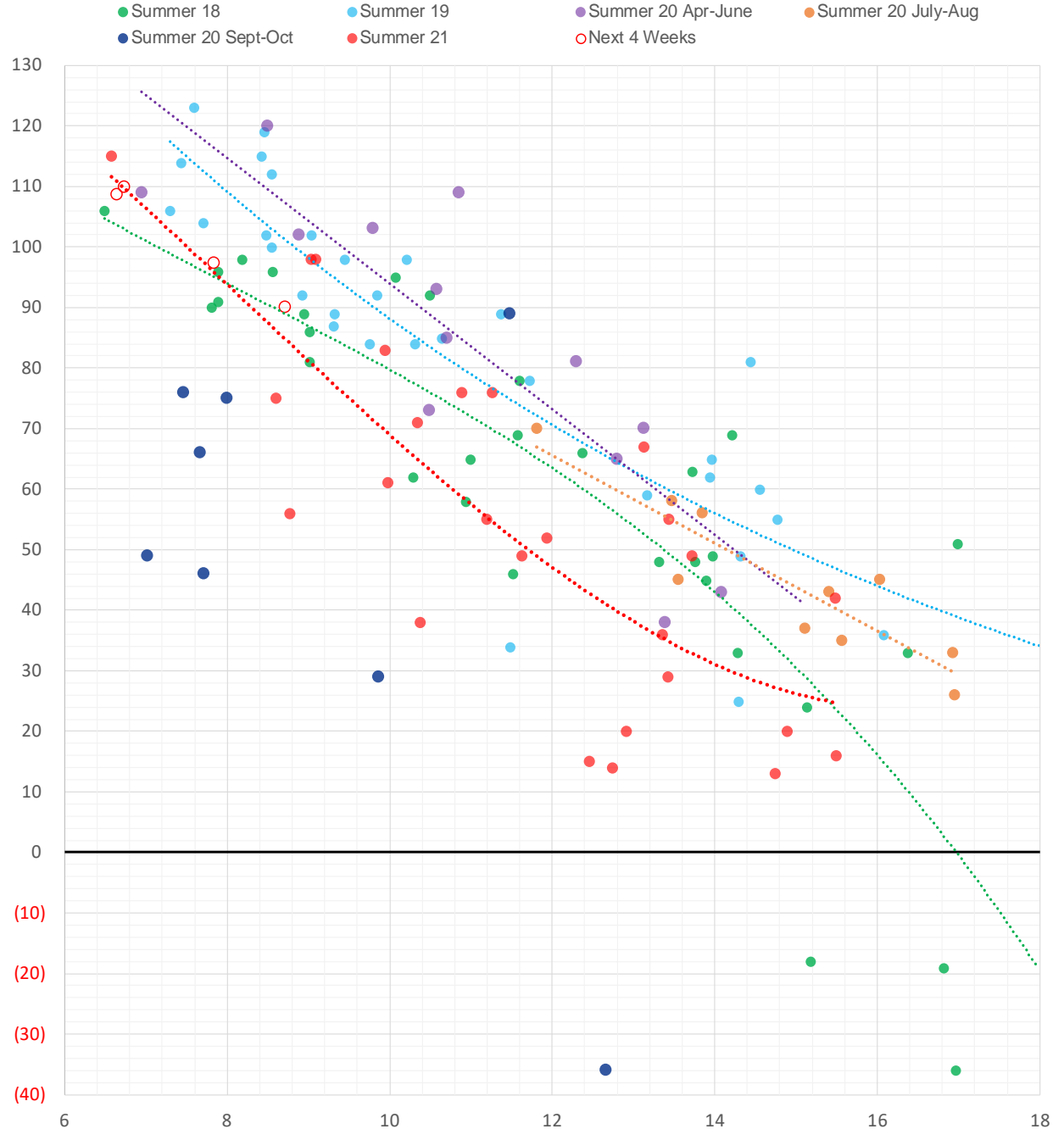
	Oct-21	Nov-21	Dec-21	Jan-22	Feb-22	Mar-22	Apr-22	May-22	Jun-22	Jul-22	Aug-22	Sep-22
<b>Current Price</b>	<b>\$4.805</b>	<b>\$4.855</b>	<b>\$4.969</b>	<b>\$5.042</b>	<b>\$4.952</b>	<b>\$4.628</b>	<b>\$3.696</b>	<b>\$3.578</b>	<b>\$3.612</b>	<b>\$3.657</b>	<b>\$3.663</b>	<b>\$3.643</b>
Last Week	\$5.460	\$5.507	\$5.604	\$5.676	\$5.585	\$5.221	\$3.914	\$3.768	\$3.797	\$3.831	\$3.839	\$3.825
vs. Last Week	-\$0.655	-\$0.652	-\$0.635	-\$0.634	-\$0.633	-\$0.593	-\$0.218	-\$0.190	-\$0.185	-\$0.174	-\$0.176	-\$0.182
4 Weeks Ago	\$3.897	\$3.925	\$3.995	\$4.105	\$4.166	\$4.089	\$3.836	\$3.320	\$3.251	\$3.281	\$3.315	\$3.323
vs. 4 Weeks Ago	\$0.908	\$0.930	\$0.974	\$0.937	\$0.786	\$0.539	-\$0.140	\$0.258	\$0.361	\$0.376	\$0.348	\$0.320
Last Year	\$2.125	\$2.794	\$3.229	\$3.348	\$3.303	\$3.165	\$2.834	\$2.783	\$2.807	\$2.843	\$2.856	\$2.844
vs. Last Year	\$2.680	\$2.061	\$1.740	\$1.694	\$1.649	\$1.463	\$0.862	\$0.795	\$0.805	\$0.814	\$0.807	\$0.799

	Units	Cash Settled	Prompt Settle	Cash to Prompt
AGT Citygate	\$/MMBtu	4.49	4.97	0.48
TETCO M3	\$/MMBtu	4.25	4.07	-0.18
FGT Zone 3	\$/MMBtu	4.22	5.40	1.18
Zone 6 NY	\$/MMBtu	4.22	3.89	-0.33
Chicago Citygate	\$/MMBtu	4.62	5.15	0.52
Michcon	\$/MMBtu	4.58	5.03	0.45
Columbia TCO Pool	\$/MMBtu	4.21	4.21	0.00
Ventura	\$/MMBtu	4.80	5.06	0.26
Rockies/Opal	\$/MMBtu	4.76	5.04	0.28
El Paso Permian Basin	\$/MMBtu	4.56	5.02	0.46
Socal Citygate	\$/MMBtu	6.26	6.11	-0.15
Malin	\$/MMBtu	5.24	5.53	0.29
Houston Ship Channel	\$/MMBtu	4.76	5.34	0.57
Henry Hub Cash	\$/MMBtu	4.91	5.09	0.18
AECO Cash	C\$/GJ	2.83	3.53	0.70
Station2 Cash	C\$/GJ	2.63	5.74	3.11
Dawn Cash	C\$/GJ	4.58	5.01	0.43

Source: CME, Bloomberg

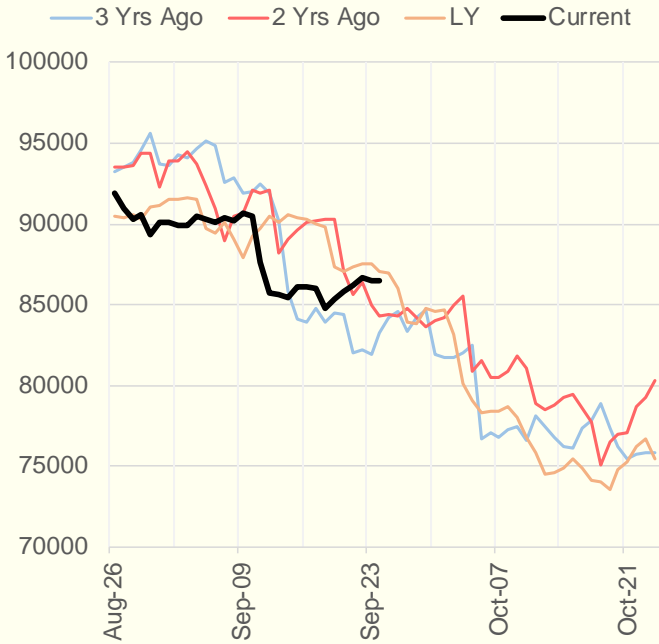
	Units	Current Price	vs. Last Week	vs. 4 Weeks Ago	vs. Last Year
NatGas Jul21/Oct21	\$/MMBtu	1.359	▼ -0.359	▲ 0.765	▲ 1.334
NatGas Oct21/Nov21	\$/MMBtu	0.067	▲ 0.020	▲ 0.017	▲ 0.013
NatGas Oct21/Jan22	\$/MMBtu	0.256	▲ 0.027	▲ 0.048	▼ -0.035
NatGas Apr22/Oct22	\$/MMBtu	-0.042	▲ 0.004	▼ -0.043	▼ -0.060
WTI Crude	\$/Bbl	73.30	▲ 0.690	▲ 5.880	▲ 32.990
Brent Crude	\$/Bbl	77.25	▲ 1.580	▲ 6.180	▲ 35.310
Fuel Oil, NY Harbour 1%	\$/Bbl	97.18	▲ 0.000	▲ 0.000	▲ 0.000
Heating Oil	cents/Gallon	224.91	▲ 3.810	▲ 16.590	▲ 113.240
Propane, Mt. Bel	cents/Gallon	1.28	▲ 0.005	▲ 0.167	▲ 0.785
Ethane, Mt. Bel	cents/Gallon	0.38	▼ -0.010	▲ 0.049	▲ 0.183
Coal, PRB	\$/MTon	12.30	▲ 0.000	▲ 0.000	▲ 0.000
Coal, PRB	\$/MMBtu	0.70			
Coal, ILB	\$/MTon	31.05	▲ 0.000	▲ 0.000	▲ 0.000
Coal, ILB	\$/MMBtu	1.32			

## Weather Storage Model - Next 4 Week Forecast

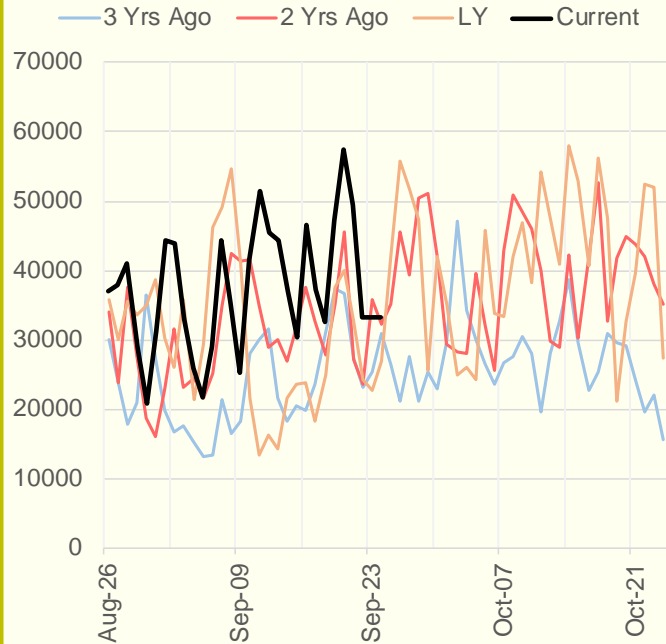


The risk of trading futures and options and other derivatives involves a substantial risk of loss and is not suitable for all persons. Each person must consider whether a particular trade, combination of trades, or strategy is suitable for that person's financial means and objectives. Past results are not necessarily indicative of future results. This communication may contain links to third party websites which are not under the control of and are not maintained by ION Energy Group, and ION Energy Group is not responsible for their content.

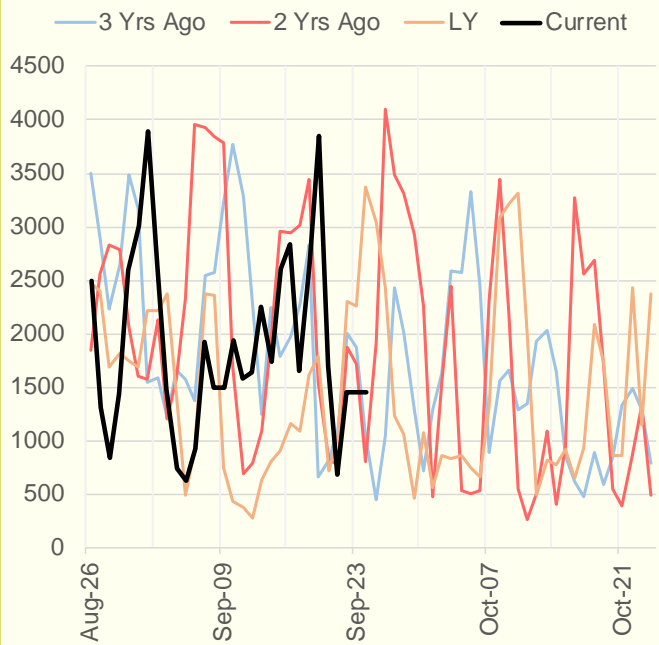
### NRC Nuclear Daily Output



### US Wind



### CALI Wind



### TEXAS Wind

