

	Current	Δ from YD	Δ from 7D Avg
Nat Gas Prompt	\$ 5.35 ▲	\$ 0.12 ▲	\$ 0.42

	Current	Δ from YD	Δ from 7D Avg
WTI Prompt	\$ 70.79 ▲	\$ 0.34 ▲	\$ 1.4

	Current	Δ from YD	Δ from 7D Avg
Brent Prompt	\$ 73.91 ▲	\$ 0.40 ▲	\$ 1.3

Page Menu

[Short-term Weather Model Outlooks](#)

[Lower 48 Component Models](#)

[Regional S/D Models Storage Projection](#)

[Weather Model Storage Projection](#)

[Supply – Demand Trends](#)

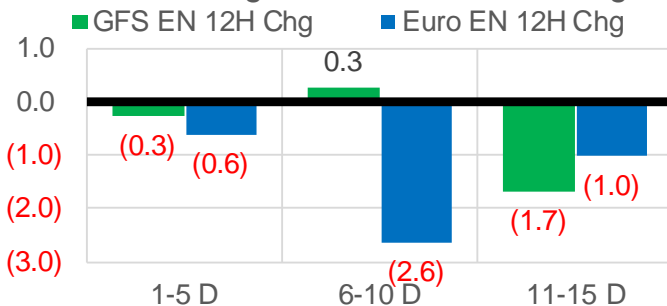
[Nat Gas Options Volume and Open Interest](#)

[Nat Gas Futures Open Interest](#)

[Price Summary](#)

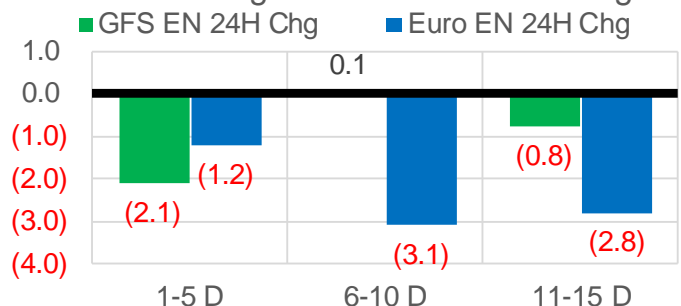
Vs. 12H Ago

L48 Region - 00z TDD vs 12H Ago



Vs. 24H Ago

L48 Region - 00z TDD vs 24H Ago



	Current	Δ from YD	Δ from 7D Avg
US Dry Production	89.8 ▼	-1.65 ▼	-1.43

	Current	Δ from YD	Δ from 7D Avg
US Power Burns	36.1 ▼	-0.67 ▼	▲ 1.41

	Current	Δ from YD	Δ from 7D Avg
US ResComm	7.2 ▼	-0.09 ▼	▲ 0.12

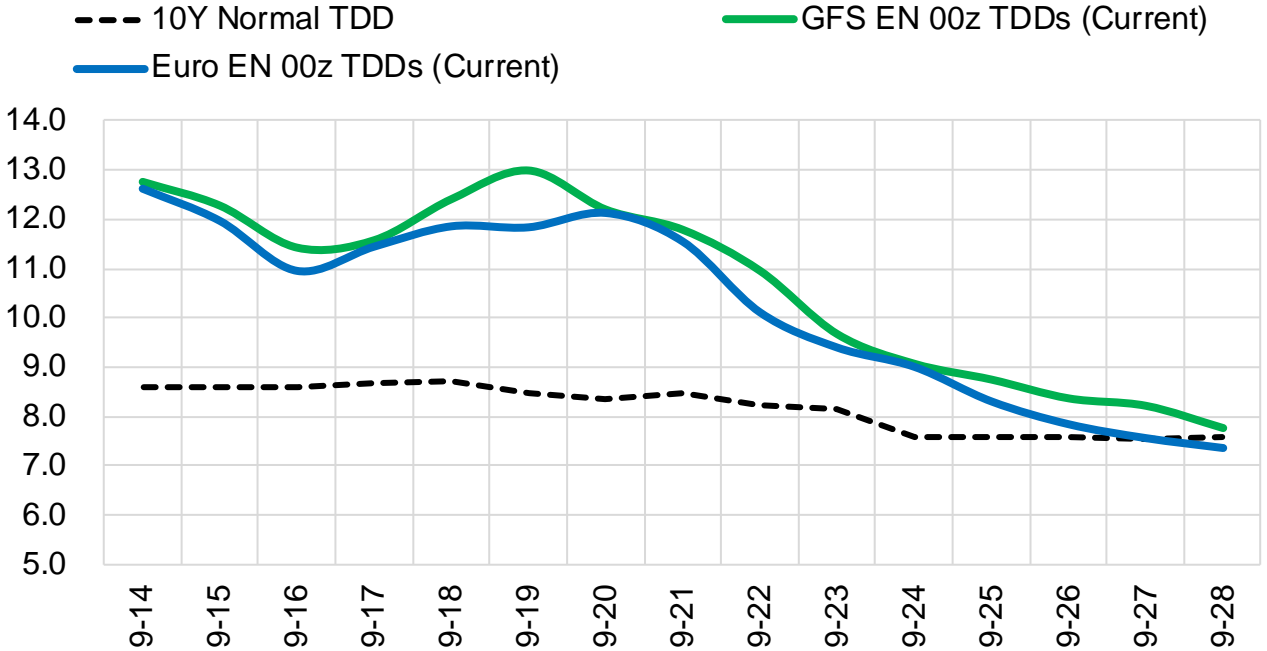
	Current	Δ from YD	Δ from 7D Avg
Canadian Imports	5.2 ▼	-0.05 ▼	▲ 0.09

	Current	Δ from YD	Δ from 7D Avg
Net LNG Exports	11.4 ▲	0.25 ▲	▲ 0.32

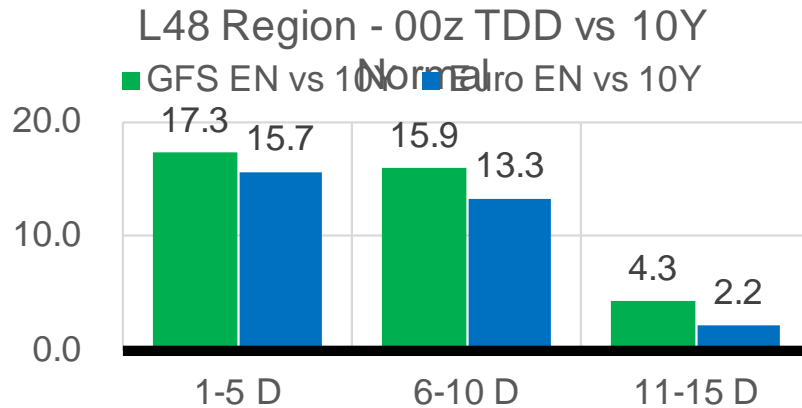
	Current	Δ from YD	Δ from 7D Avg
Mexican Exports	6.8 ▲	0.20 ▲	▲ 0.17

Short-term Weather Model Outlooks (00z)

L48 Region



Vs. 10Y Normal



Source: WSI , Bloomberg

Lower 48 Component Models

Daily Balances

	8-Sep	9-Sep	10-Sep	11-Sep	12-Sep	13-Sep	14-Sep	DoD	vs. 7D
Lower 48 Dry Production	91.2	90.3	90.8	91.2	91.6	91.4	89.8	▼ -1.7	▼ -1.4
Canadian Imports	5.0	5.2	5.1	5.1	5.3	5.2	5.2	▼ 0.0	▲ 0.0
L48 Power	36.3	34.5	33.1	32.4	34.5	36.7	36.1	▼ -0.7	▲ 1.5
L48 Residential & Commercial	7.5	7.4	7.1	6.6	6.8	7.3	7.2	▼ -0.1	▲ 0.1
L48 Industrial	19.8	19.9	19.9	20.0	20.1	20.5	20.5	▲ 0.0	▲ 0.4
L48 Lease and Plant Fuel	5.0	5.0	5.0	5.0	5.0	5.0	4.9	▼ -0.1	▼ -0.1
L48 Pipeline Distribution	2.2	2.1	2.0	2.0	2.1	2.2	2.2	▼ 0.0	▲ 0.1
L48 Regional Gas Consumption	70.8	68.8	67.1	66.0	68.6	71.8	70.9	▼ -0.9	▲ 2.1
Net LNG Delivered	10.96	10.66	11.07	10.88	11.31	11.11	11.36	▲ 0.3	▲ 0.4
Total Mexican Exports	6.9	6.6	6.7	6.4	6.3	6.6	6.8	▲ 0.2	▲ 0.2
Implied Daily Storage Activity	7.6	9.4	11.1	13.0	10.7	7.1	5.8		
EIA Reported Daily Storage Activity									
Daily Model Error									

EIA Storage Week Balances

	6-Aug	13-Aug	20-Aug	27-Aug	3-Sep	10-Sep	WoW	vs. 4W
Lower 48 Dry Production	91.9	92.4	92.4	93.0	90.9	91.2	▲ 0.3	▼ -1.0
Canadian Imports	5.0	5.2	5.0	5.3	5.0	4.8	▼ -0.2	▼ -0.3
L48 Power	38.3	41.1	39.7	41.9	38.0	33.6	▼ -4.3	▼ -6.5
L48 Residential & Commercial	8.0	7.8	7.6	7.8	7.5	7.0	▼ -0.4	▼ -0.6
L48 Industrial	20.2	19.2	20.9	20.9	18.6	19.4	▲ 0.8	▼ -0.5
L48 Lease and Plant Fuel	5.1	5.1	5.1	5.1	5.0	5.0	▲ 0.0	▼ -0.1
L48 Pipeline Distribution	2.2	2.4	2.3	2.4	2.2	2.1	▼ -0.2	▼ -0.3
L48 Regional Gas Consumption	73.8	75.6	75.6	78.2	71.3	67.2	▼ -4.1	▼ -8.0
Net LNG Exports	10.6	9.9	10.9	10.6	10.5	11.0	▲ 0.5	▲ 0.5
Total Mexican Exports	6.9	6.8	6.8	6.8	7.0	6.7	▼ -0.3	▼ -0.2
Implied Daily Storage Activity	5.7	5.2	4.2	2.8	7.1	11.2	4.0	
EIA Reported Daily Storage Activity	7.0	6.6	4.1	2.9	7.4			
Daily Model Error	-1.3	-1.4	0.1	-0.1	-0.3			

Monthly Balances

	2Yr Ago Sep-18	LY Sep-18	May-21	Jun-21	Jul-21	Aug-21	MTD Sep-21	MoM	vs. LY
Lower 48 Dry Production	86.6	86.6	93.1	93.4	92.4	92.2	91.1	▼ -1.1	▲ 4.5
Canadian Imports	4.5	4.5	4.5	4.8	5.2	5.1	4.9	▼ -0.2	▲ 0.4
L48 Power	34.3	34.3	26.8	35.9	39.6	40.2	34.0	▼ -6.2	▼ -0.3
L48 Residential & Commercial	8.5	8.5	12.8	8.9	8.6	7.7	7.1	▼ -0.6	▼ -1.4
L48 Industrial	22.6	22.6	20.8	20.6	19.6	20.1	19.5	▼ -0.5	▼ -3.1
L48 Lease and Plant Fuel	4.8	4.8	5.1	5.1	5.1	5.1	5.0	▼ -0.1	▲ 0.2
L48 Pipeline Distribution	2.1	2.1	2.1	2.2	2.3	2.3	2.1	▼ -0.2	▲ 0.0
L48 Regional Gas Consumption	72.3	72.3	67.6	72.7	75.1	75.4	67.7	▼ -7.7	▼ -4.6
Net LNG Exports	3.1	3.1	10.8	10.2	10.8	10.5	10.9	▲ 0.4	▲ 7.8
Total Mexican Exports	5.0	5.0	6.8	7.4	7.0	6.9	6.7	▼ -0.2	▲ 1.7
Implied Daily Storage Activity	10.7	10.7	12.4	8.0	4.6	4.6	10.7		
EIA Reported Daily Storage Activity									
Daily Model Error									

Source: Bloomberg, analytix.ai

Daily Average Generation Data

Nuclear Generation Daily Average - GWh (NRC)

	6-Sep	7-Sep	8-Sep	9-Sep	10-Sep	11-Sep	12-Sep	DoD	vs. 7D
NRC Nuclear Daily Output	90.1	90.4	90.2	90.7	90.4	87.6	85.7	-1.9	-4.2
NRC Nuclear Max Capacity	104.9	104.9	104.9	104.9	104.9	104.9	104.9	0.0	0.0
NRC Nuclear Outage	14.8	14.5	14.7	14.2	14.4	17.3	19.2	1.9	4.2
NRC % Nuclear Cap Utilization	91.6	91.9	91.7	92.2	92.0	89.1	87.2	-1.9	-4.3

Wind Generation Daily Average - MWh (EIA)

	6-Sep	7-Sep	8-Sep	9-Sep	10-Sep	11-Sep	12-Sep	DoD	vs. 7D
CALI Wind	917	1916	1499	1489	1933	1582	1639	57	83
TEXAS Wind	4445	6387	6438	6940	13204	12093	10433	-1661	2181
US Wind	29088	44321	35146	25275	41396	51240	45323	-5917	7578

Generation Daily Average - MWh (EIA)

	6-Sep	7-Sep	8-Sep	9-Sep	10-Sep	11-Sep	12-Sep	DoD	vs. 7D
US Wind	29088	44321	35146	25275	41396	51240	45323	-5917	7578
US Solar	13961	14119	12961	12184	13809	13934	14232	297	737
US Petroleum	2272	2068	2067	2705	2206	2189	2594	405	343
US Other	8613	9178	8953	8591	8259	8547	9059	512	369
US Coal	113656	112319	119951	119792	110954	102157	108214	6057	-4924
US Nuke	93181	92903	92842	93366	93090	90305	88978	-1327	-3637
US Hydro	25833	27671	27913	27947	25973	23680	22701	-980	-3802
US Gas	177495	194259	201605	194771	171141	155930	170340	14410	-12193

See National Wind and Nuclear daily charts

Source: Bloomberg, analytix.ai

Storage Week Average Generation Data

Nuclear Generation Weekly Average - GWh (NRC)

	6-Aug	13-Aug	20-Aug	27-Aug	3-Sep	10-Sep	WoW	WoW Bcf/d Impact
NRC Nuclear Daily Output	90.6	91.5	92.4	91.9	90.2	90.3	0.1	0.0
NRC Nuclear Max Capacity	104.9	104.9	104.9	104.9	104.9	104.9	0.0	
NRC Nuclear Outage	14.3	13.3	12.5	12.9	14.7	14.6	-0.1	
NRC % Nuclear Cap Utilization	0.1	0.1	0.1	0.1	0.1	0.1	0.0	

Wind Generation Weekly Average - MWh (EIA)

	6-Aug	13-Aug	20-Aug	27-Aug	3-Sep	10-Sep	WoW	WoW Bcf/d Impact
CALI Wind	2237	2507	3210	2052	2247	1236	-1010	0.2
TEXAS Wind	5180	16319	7171	12600	7534	7327	-206	0.0
US Wind	22379	49586	29141	41810	35348	30632	-4716	0.8
					-6462.0			
					-15%			

Generation Weekly Average - MWh (EIA)

	6-Aug	13-Aug	20-Aug	27-Aug	3-Sep	10-Sep	WoW	WoW Bcf/d Impact
US Wind	22379	49586	29141	41810	35348	30632	-4716	0.8
US Solar	14131	14383	12828	14536	13423	14092	669	-0.1
US Petroleum	4074	4712	4466	5323	3135	2072	-1063	0.2
US Other	9070	10070	10104	10131	9767	8782	-985	0.2
US Coal	134740	140524	138052	136168	136296	116912	-19384	3.5
US Nuke	93328	94302	95157	94358	92365	93162	797	-0.1
US Hydro	27752	27035	28988	30618	28159	26936	-1223	0.2
US Gas	204634	208281	212106	215990	205501	180664	-24836	4.5

See National Wind and Nuclear daily charts

Source: Bloomberg, analytix.ai

Monthly Average Generation Data

Nuclear Generation Monthly Average - GWh (NRC)

	2Yr Ago		LY		MTD		Last 30 days	MoM (MTD vs LY)	Last 30 days YoY
	Same 30 days	Same 30 days	Jun-21	Jul-21	Aug-21	Sep-21			
	NRC Nuclear Daily Output	93.0	90.1	88.7	90.1	91.5			
NRC Nuclear Max Capacity	104.9	104.9	104.9	104.9	104.9	104.9	104.9	0.0	0.0
NRC Nuclear Outage	11.8	14.7	16.2	14.8	13.4	15.8	14.5	2.4	-0.2
NRC % Nuclear Cap Utilization	94.6	91.7	90.2	91.6	93.0	90.6	91.9	-2.5	0.2

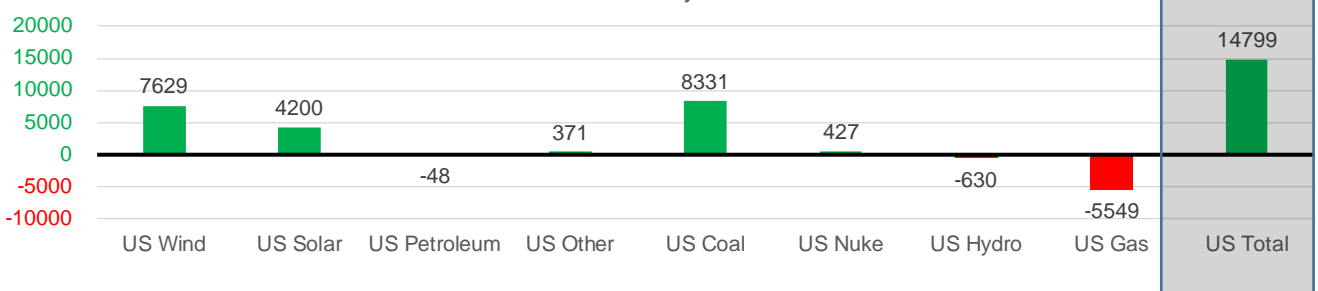
Wind Generation Monthly Average - MWh (EIA)

	2Yr Ago		LY		MTD		Last 30 days	MoM (MTD vs LY)	Last 30 days YoY
	Same 30 days	Same 30 days	Jun-21	Jul-21	Aug-21	Sep-21			
	CALI Wind	2286	1599	2881	2338	2442			
TEXAS Wind	7908	7189	9509	7217	9901	9342	9479	-559	2290
US Wind	29511	29397	36826	29106	35740	37927	37025	2187	7629

Generation Monthly Average - MWh (EIA)

	2Yr Ago		LY		MTD		Last 30 days	MoM (MTD vs LY)	Last 30 days YoY
	Same 30 days	Same 30 days	Jun-21	Jul-21	Aug-21	Sep-21			
	US Wind	29511	29397	36826	29106	35740			
US Solar	8609	9681	14578	14195	13849	14028	13880	▼ -147.7	▲ 4200
US Petroleum	4433	3538	4155	4233	4484	2237	3490	▲ 1254	▼ -48
US Other	8577	9161	8208	9327	9929	8819	9532	▲ 713	▲ 371
US Coal	117081	118600	122034	137228	137649	114699	126931	▲ 12232	▲ 8331
US Nuke	99602	92596	92180	92911	94062	91996	93022	▲ 1027	▲ 427
US Hydro	29289	28542	32565	29941	28528	25966	27911	▲ 1945	▼ -630
US Gas	204779	202692	189395	207814	210806	175871	197143	▲ 16121	▼ -5549
US Total	503737	494128	500271	524889	534991	471650	508927	▲ 33144	▲ 14799

Last 30 days YoY



See National Wind and Nuclear daily charts

Source: Bloomberg, analytix.ai

Regional S/D Models Storage Projection

Week Ending 10-Sep

	Daily Raw Storage	Daily Adjustment Factor	Daily Average Storage Activity (Adjusted) *	Weekly Adjusted Storage Activity
L48	10.9	0.5	11.4	80
East	3.1	1.0	4.1	29
Midwest	5.6	-0.2	5.5	38
Mountain	4.0	-3.3	0.7	5
South Central	-2.2	3.4	1.2	8
Pacific	0.4	-0.4	-0.1	0

*Adjustment Factor is calculated based on historical regional deltas

U.S. underground natural gas storage facilities by type (July 2015)

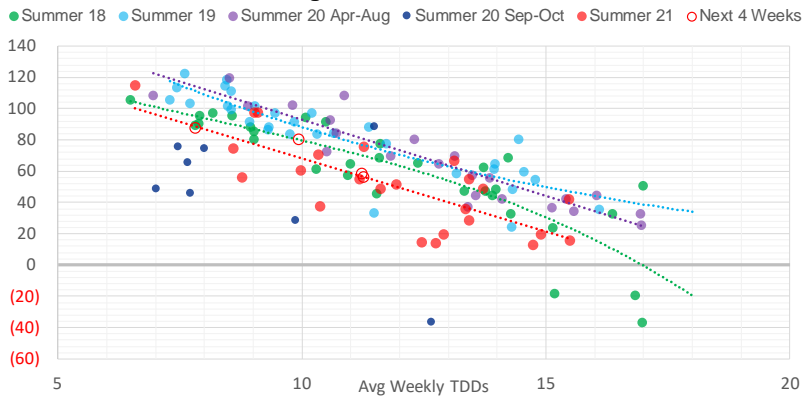


Weather Model Storage Projection

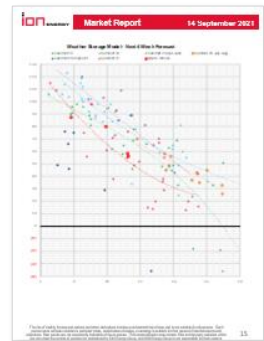
Next report
and beyond

Week Ending	GWDDs	Week Storage Projection
10-Sep	9.9	80
17-Sep	11.3	56
24-Sep	11.2	58
01-Oct	7.8	87

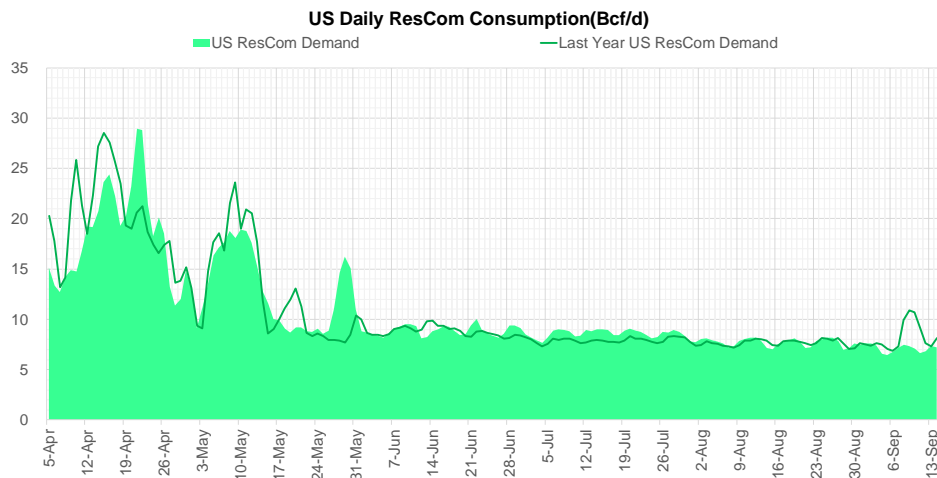
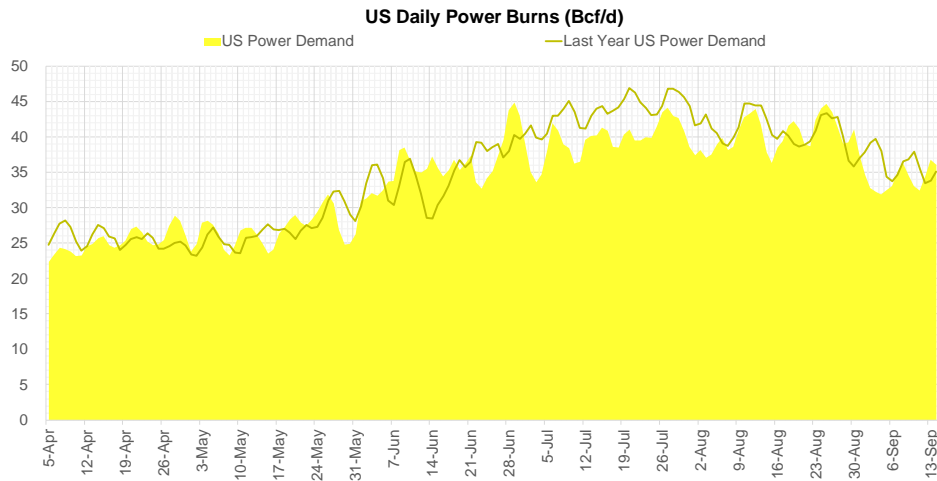
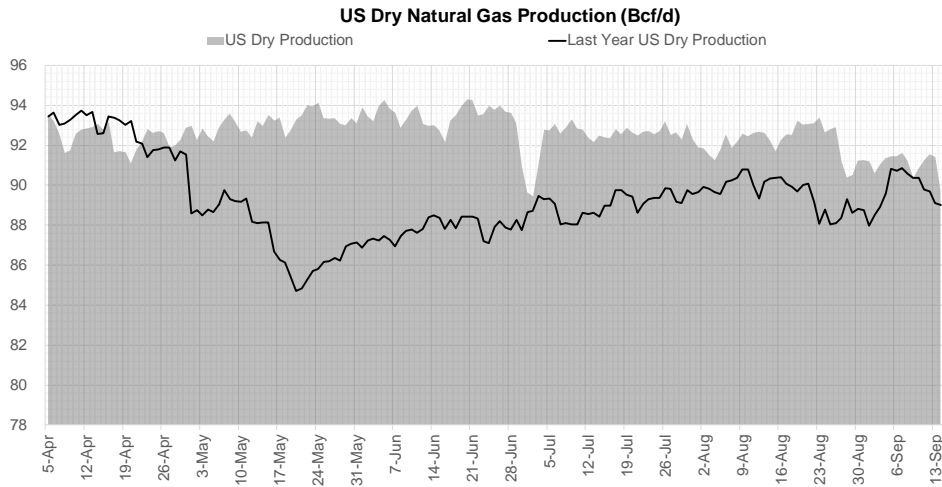
Weather Storage Model - Next 4 Week Forecast



Go to larger image



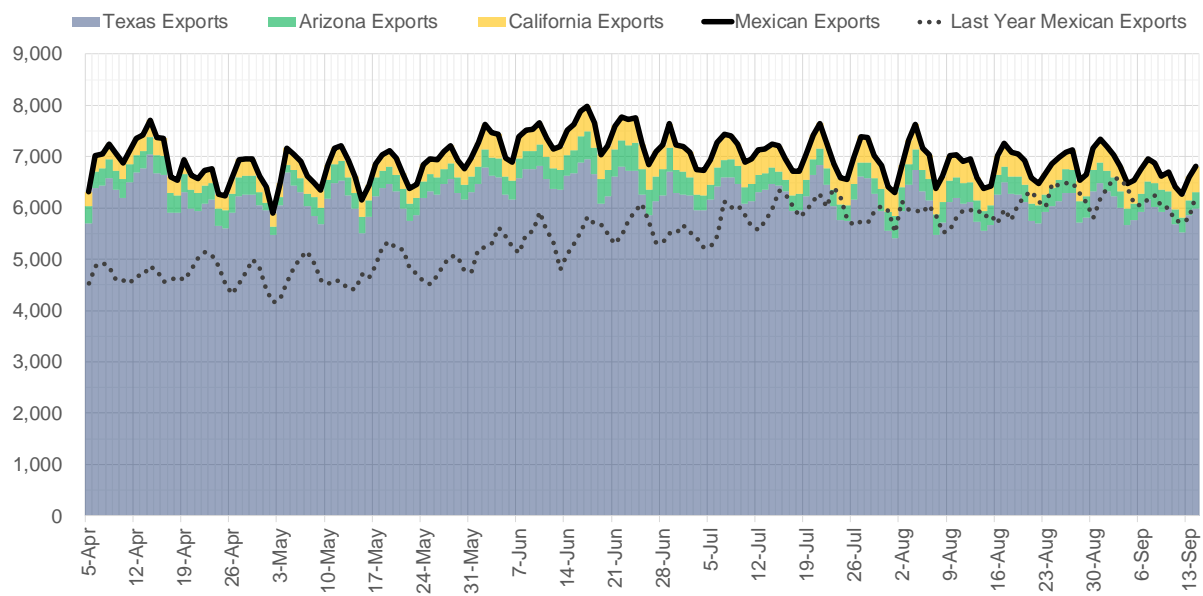
Supply – Demand Trends



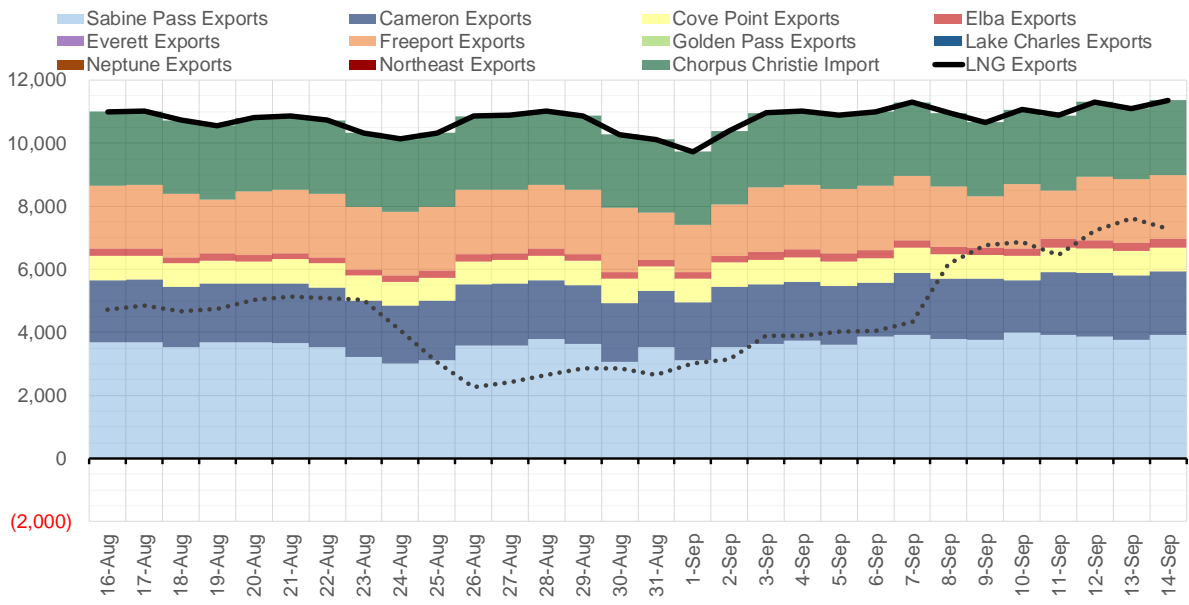
Source: Bloomberg

The risk of trading futures and options and other derivatives involves a substantial risk of loss and is not suitable for all persons. Each person must consider whether a particular trade, combination of trades, or strategy is suitable for that person's financial means and objectives. Past results are not necessarily indicative of future results. This communication may contain links to third party websites which are not under the control of and are not maintained by ION Energy Group, and ION Energy Group is not responsible for their content.

Mexican Exports (MMcf/d)



Net LNG Exports - Last 30 days (MMcf/d)



Source: Bloomberg

The risk of trading futures and options and other derivatives involves a substantial risk of loss and is not suitable for all persons. Each person must consider whether a particular trade, combination of trades, or strategy is suitable for that person's financial means and objectives. Past results are not necessarily indicative of future results. This communication may contain links to third party websites which are not under the control of and are not maintained by ION Energy Group, and ION Energy Group is not responsible for their content.

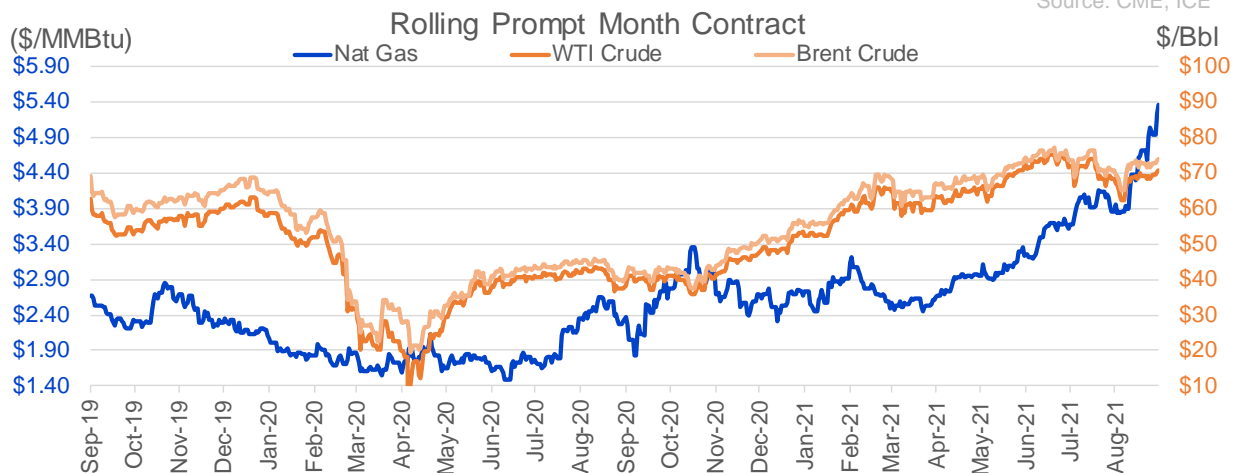
Nat Gas Options Volume and Open Interest CME, ICE and Nasdaq Combined

CONTRACT MONTH	CONTRACT YEAR	PUT/CALL	STRIKE	CUMULATIVE VOL	CONTRACT MONTH	CONTRACT YEAR	PUT/CALL	STRIKE	CUMULATIVE OI
10	2021	C	6.00	15163	10	2021	C	5.00	58438
10	2021	C	5.50	10968	10	2021	C	4.00	42329
11	2021	C	7.00	8193	12	2021	P	2.75	42059
10	2021	C	5.25	6933	10	2021	P	3.50	41987
12	2022	C	5.25	6260	10	2021	C	4.50	41142
12	2022	C	6.25	6260	10	2021	C	6.00	39305
10	2021	P	5.00	5074	12	2021	P	2.50	38542
11	2021	P	3.50	5029	10	2021	C	3.50	32999
11	2021	P	4.00	4908	10	2021	C	4.25	32432
10	2021	C	5.00	4859	10	2021	P	3.00	31758
10	2021	P	4.75	4840	10	2021	P	4.00	31230
11	2021	C	6.00	4495	11	2021	P	3.00	30721
10	2021	C	5.75	3629	10	2021	P	2.50	29994
12	2021	C	6.00	3404	10	2021	P	2.00	28650
2	2022	P	3.50	3401	10	2021	C	3.25	28193
10	2021	P	4.50	3242	10	2021	P	2.75	26887
12	2021	C	7.00	3049	12	2021	P	3.00	25878
3	2022	P	3.50	2917	11	2021	P	4.00	23643
10	2021	P	4.25	2810	11	2021	C	4.00	23312
12	2022	C	4.60	2800	12	2021	C	4.00	22648
12	2022	C	5.10	2800	10	2021	P	3.75	22580
1	2022	P	4.00	2443	3	2022	C	10.00	22270
11	2021	C	5.25	2437	12	2021	P	4.00	21505
1	2022	P	3.50	2403	11	2021	P	3.50	20694
11	2021	P	4.50	2383	10	2021	C	5.50	20679
3	2022	P	4.00	2247	10	2021	P	2.25	19784
10	2021	C	5.20	2174	4	2022	C	3.00	19760
2	2022	P	4.00	2125	3	2022	P	3.50	19105
11	2021	C	5.50	2012	3	2022	C	5.00	19075
3	2022	C	1.00	2000	11	2021	C	7.00	18756
3	2022	P	1.00	2000	10	2021	P	4.25	18745
10	2021	P	4.40	1922	10	2021	C	3.00	18494
10	2021	P	4.90	1890	3	2022	C	8.00	18228
11	2021	C	5.00	1757	10	2021	P	3.25	17940
10	2021	C	7.00	1617	10	2021	P	4.50	17532
3	2022	C	7.00	1603	1	2022	C	5.00	17186
10	2021	C	4.75	1580	3	2022	P	2.50	16805
10	2021	P	4.80	1577	10	2021	C	3.75	16780
3	2022	C	5.00	1576	11	2021	C	5.00	16612
3	2022	C	5.50	1522	2	2022	C	5.00	16590
11	2021	C	9.00	1520	3	2022	C	4.00	16024
10	2021	P	4.70	1516	11	2021	C	6.00	15905
11	2021	C	5.20	1310	11	2021	C	6.00	15838
10	2021	C	6.50	1309	2	2022	C	4.00	15821
11	2021	P	4.25	1296	11	2021	C	4.50	15220
11	2021	C	6.50	1291	1	2022	P	3.50	14835
11	2021	P	3.25	1290	12	2021	C	6.00	14516
10	2021	P	4.85	1224	1	2022	C	4.00	14503
12	2021	C	9.00	1160	11	2021	P	2.50	14486
					11	2021	C	3.75	14481

Source: CME, ICE

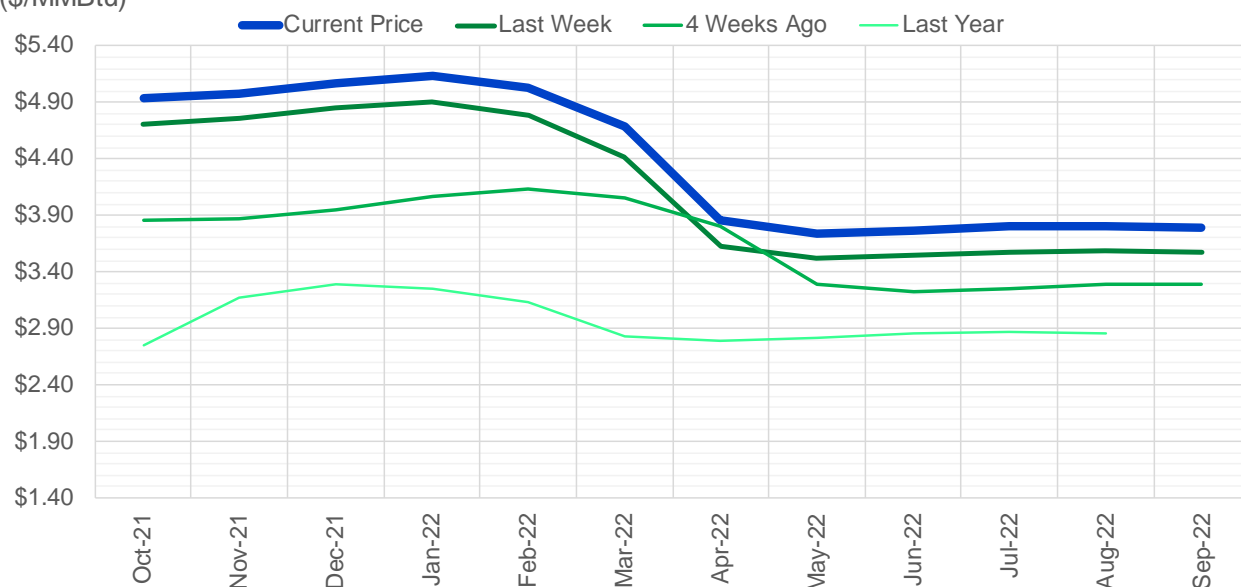
Nat Gas Futures Open Interest CME, and ICE Combined

CME Henry Hub Futures (10,000 MMBtu)				ICE Henry Hub Futures Contract Equivalent (10,000 MM			
	Current	Prior	Daily Change		Current	Prior	Daily Change
OCT 21	164007	177778	-13771	OCT 21	105896	105697	200
NOV 21	234614	223531	11083	NOV 21	79724	75286	4438
DEC 21	88905	88524	381	DEC 21	76373	77043	-670
JAN 22	159678	155850	3828	JAN 22	89901	89189	712
FEB 22	60013	60043	-30	FEB 22	68604	68474	131
MAR 22	115375	117008	-1633	MAR 22	73552	72191	1361
APR 22	116438	117668	-1230	APR 22	68814	68461	352
MAY 22	115851	115663	188	MAY 22	69233	68854	380
JUN 22	40891	40490	401	JUN 22	52276	52150	127
JUL 22	30242	30468	-226	JUL 22	53661	53383	278
AUG 22	32784	32759	25	AUG 22	54016	53754	263
SEP 22	35674	34997	677	SEP 22	54249	53980	269
OCT 22	87361	86489	872	OCT 22	60652	60996	-344
NOV 22	32612	32193	419	NOV 22	47442	47321	121
DEC 22	25605	25262	343	DEC 22	50377	50339	39
JAN 23	21994	22072	-78	JAN 23	37172	37076	97
FEB 23	8498	8252	246	FEB 23	30431	30323	108
MAR 23	11505	11414	91	MAR 23	32543	32615	-73
APR 23	11557	11709	-152	APR 23	29080	28831	249
MAY 23	7265	7296	-31	MAY 23	29479	29350	129
JUN 23	5507	5451	56	JUN 23	27443	27284	159
JUL 23	4062	4055	7	JUL 23	27556	27383	173
AUG 23	3219	3221	-2	AUG 23	27412	27227	185
SEP 23	4158	4150	8	SEP 23	26707	26585	122
OCT 23	6086	6009	77	OCT 23	28617	28452	165
NOV 23	1865	1979	-114	NOV 23	27941	27894	47
DEC 23	1954	1865	89	DEC 23	26592	26554	39
JAN 24	1202	1142	60	JAN 24	14696	14632	64
FEB 24	890	890	0	FEB 24	12237	12153	84
MAR 24	3219	3222	-3	MAR 24	16488	16329	159



(\$/MMBtu)

Nat Gas Term Structure



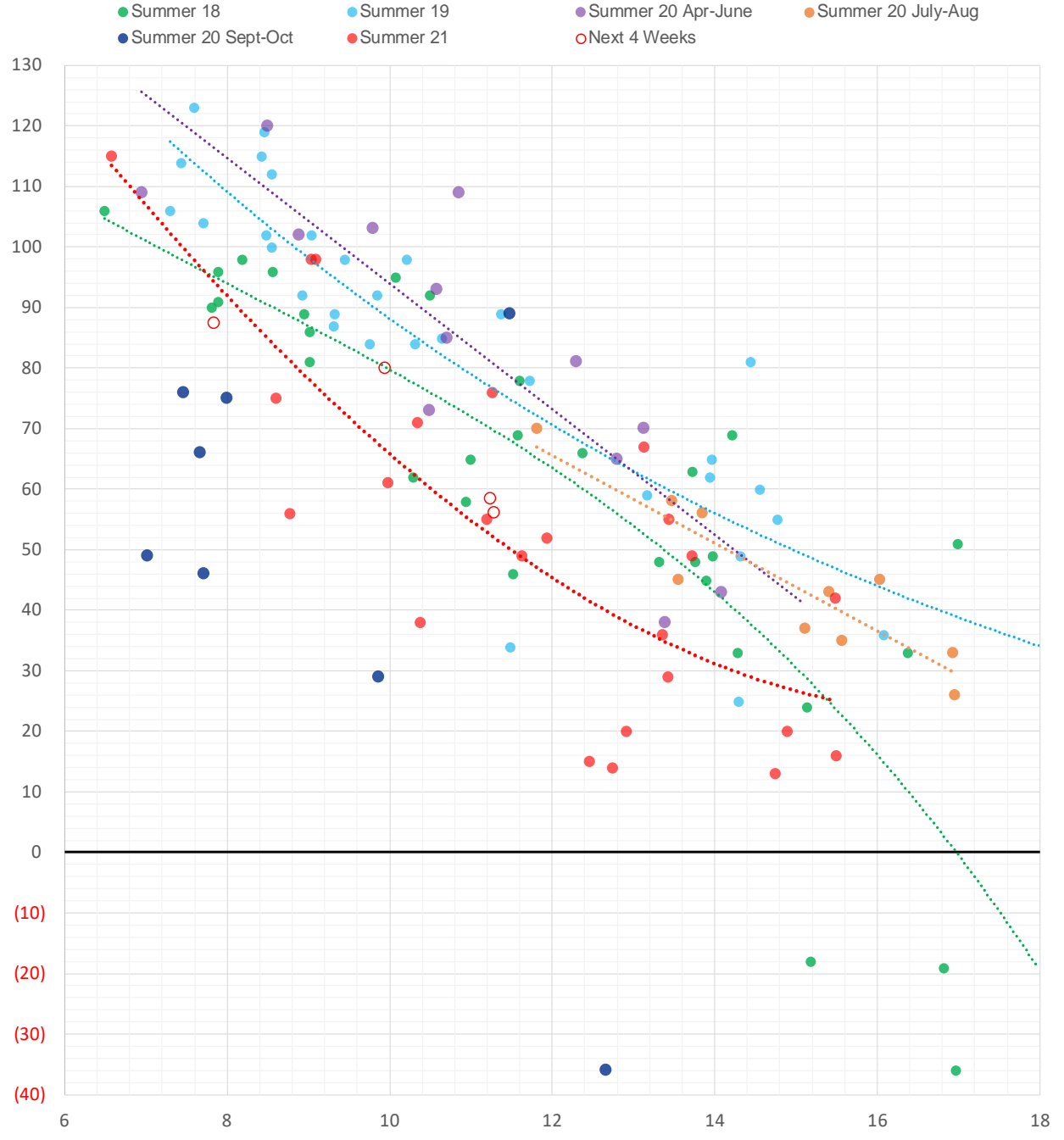
	Oct-21	Nov-21	Dec-21	Jan-22	Feb-22	Mar-22	Apr-22	May-22	Jun-22	Jul-22	Aug-22	Sep-22
Current Price	\$4.938	\$4.973	\$5.067	\$5.129	\$5.028	\$4.680	\$3.854	\$3.742	\$3.770	\$3.802	\$3.809	\$3.794
Last Week	\$4.712	\$4.762	\$4.850	\$4.905	\$4.791	\$4.420	\$3.628	\$3.521	\$3.549	\$3.579	\$3.587	\$3.568
vs. Last Week	\$0.226	\$0.211	\$0.217	\$0.224	\$0.237	\$0.260	\$0.226	\$0.221	\$0.221	\$0.223	\$0.222	\$0.226
4 Weeks Ago	\$3.861	\$3.875	\$3.949	\$4.070	\$4.135	\$4.058	\$3.808	\$3.289	\$3.222	\$3.251	\$3.285	\$3.293
vs. 4 Weeks Ago	\$1.077	\$1.098	\$1.118	\$1.059	\$0.893	\$0.622	\$0.046	\$0.453	\$0.548	\$0.551	\$0.524	\$0.501
Last Year	\$2.269	\$2.744	\$3.165	\$3.290	\$3.253	\$3.138	\$2.826	\$2.788	\$2.817	\$2.854	\$2.866	\$2.854
vs. Last Year	\$2.669	\$2.229	\$1.902	\$1.839	\$1.775	\$1.542	\$1.028	\$0.954	\$0.953	\$0.948	\$0.943	\$0.940

	Units	Cash Settled	Prompt Settle	Cash to Prompt
AGT Citygate	\$/MMBtu	5.05	4.35	-0.70
TETCO M3	\$/MMBtu	4.90	3.44	-1.46
FGT Zone 3	\$/MMBtu	4.94	4.79	-0.15
Zone 6 NY	\$/MMBtu	4.94	3.31	-1.63
Chicago Citygate	\$/MMBtu	5.08	4.58	-0.50
Michcon	\$/MMBtu	5.01	4.50	-0.51
Columbia TCO Pool	\$/MMBtu	4.86	3.63	-1.23
Ventura	\$/MMBtu	4.68	4.55	-0.13
Rockies/Opal	\$/MMBtu	5.04	4.48	-0.57
El Paso Permian Basin	\$/MMBtu	5.13	4.41	-0.72
Socal Citygate	\$/MMBtu	7.81	5.33	-2.48
Malin	\$/MMBtu	5.61	4.87	-0.74
Houston Ship Channel	\$/MMBtu	5.15	4.81	-0.34
Henry Hub Cash	\$/MMBtu	5.17	4.52	-0.65
AECO Cash	C\$/GJ	3.69	2.76	-0.93
Station2 Cash	C\$/GJ	3.25	4.98	1.73
Dawn Cash	C\$/GJ	5.03	4.48	-0.55

Source: CME, Bloomberg

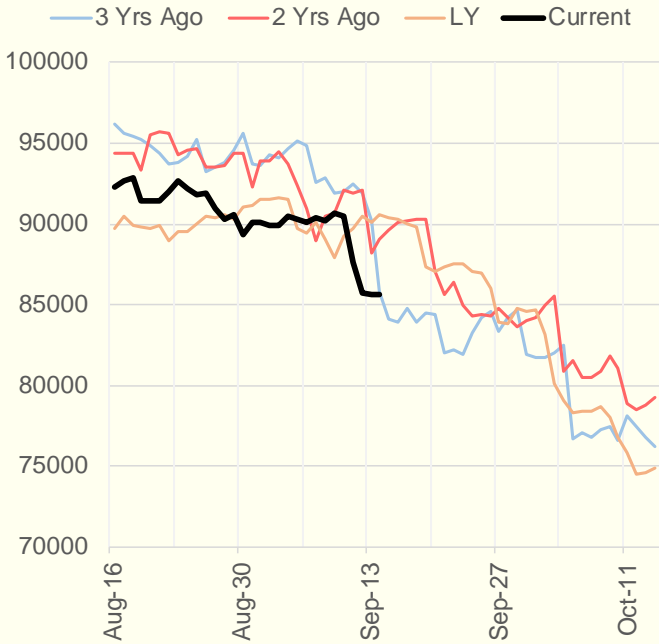
	Units	Current Price	vs. Last Week	vs. 4 Weeks Ago	vs. Last Year
NatGas Jul21/Oct21	\$/MMBtu	1.614	▲ 0.519	▲ 1.271	▲ 1.590
NatGas Oct21/Nov21	\$/MMBtu	0.042	▼ -0.008	▼ -0.031	▼ -0.009
NatGas Oct21/Jan22	\$/MMBtu	0.199	▲ 0.006	▼ -0.051	▼ -0.084
NatGas Apr22/Oct22	\$/MMBtu	-0.048	▼ -0.015	▼ -0.053	▼ -0.072
WTI Crude	\$/Bbl	70.45	▲ 1.160	▲ 3.160	▲ 33.190
Brent Crude	\$/Bbl	73.51	▲ 1.290	▲ 4.000	▲ 33.900
Fuel Oil, NY Harbour 1%	\$/Bbl	97.18	▲ 0.000	▲ 0.000	▲ 0.000
Heating Oil	cents/Gallon	215.83	▼ -0.110	▲ 11.000	▲ 106.490
Propane, Mt. Bel	cents/Gallon	1.22	▲ 0.028	▲ 0.097	▲ 0.738
Ethane, Mt. Bel	cents/Gallon	0.38	▲ 0.018	▲ 0.041	▲ 0.172
Coal, PRB	\$/MTon	12.30	▲ 0.000	▲ 0.000	▲ 0.000
Coal, PRB	\$/MMBtu	0.70			
Coal, ILB	\$/MTon	31.05	▲ 0.000	▲ 0.000	▲ 0.000
Coal, ILB	\$/MMBtu	1.32			

Weather Storage Model - Next 4 Week Forecast

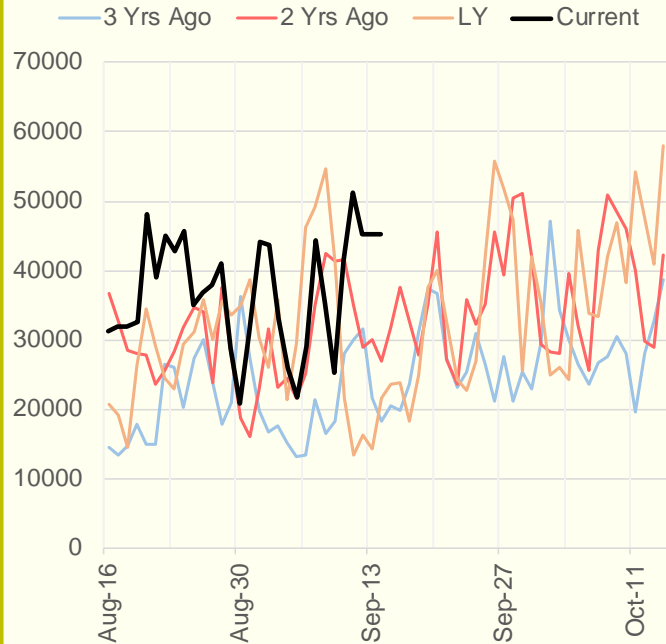


The risk of trading futures and options and other derivatives involves a substantial risk of loss and is not suitable for all persons. Each person must consider whether a particular trade, combination of trades, or strategy is suitable for that person's financial means and objectives. Past results are not necessarily indicative of future results. This communication may contain links to third party websites which are not under the control of and are not maintained by ION Energy Group, and ION Energy Group is not responsible for their content.

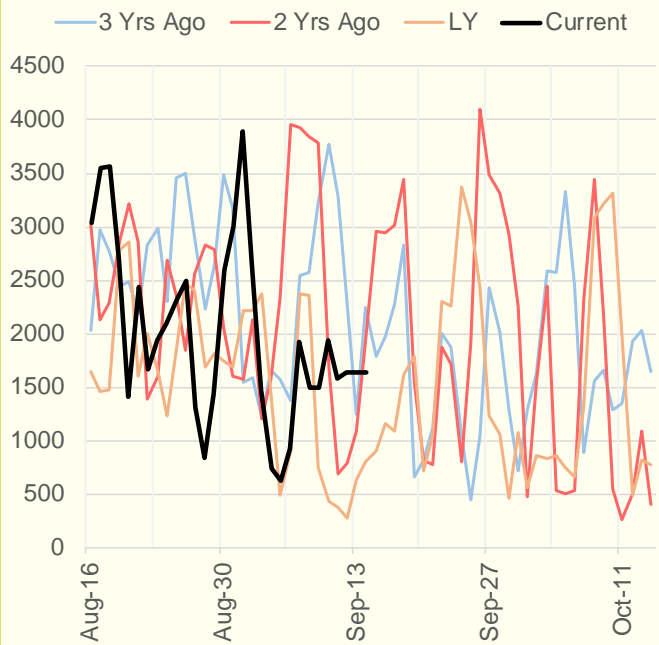
NRC Nuclear Daily Output



US Wind



CALI Wind



TEXAS Wind

