

	Current	Δ from YD	Δ from 7D Avg
Nat Gas Prompt	\$ 5.04 ▲	\$ 0.10 ▲	\$ 0.17 ▲

	Current	Δ from YD	Δ from 7D Avg
WTI Prompt	\$ 70.12 ▲	\$ 0.40 ▲	\$ 0.9 ▲

	Current	Δ from YD	Δ from 7D Avg
Brent Prompt	\$ 73.26 ▲	\$ 0.34 ▲	\$ 0.9 ▲

Page Menu

[Short-term Weather Model Outlooks](#)

[Lower 48 Component Models](#)

[Regional S/D Models Storage Projection](#)

[Weather Model Storage Projection](#)

[Supply – Demand Trends](#)

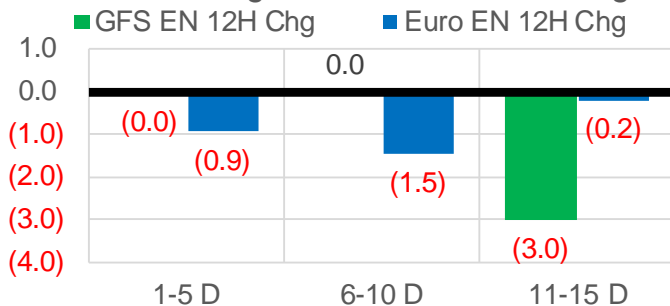
[Nat Gas Options Volume and Open Interest](#)

[Nat Gas Futures Open Interest](#)

[Price Summary](#)

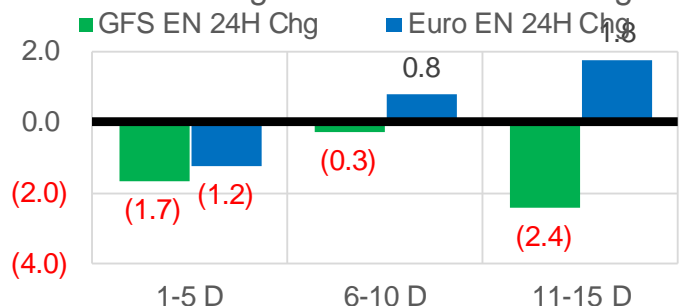
Vs. 12H Ago

L48 Region - 00z TDD vs 12H Ago



Vs. 24H Ago

L48 Region - 00z TDD vs 24H Ago



	Current	Δ from YD	Δ from 7D Avg
US Dry Production	90.6 ▼	-0.81 ▼	-0.53 ▼

	Current	Δ from YD	Δ from 7D Avg
US Power Burns	35.1 ▲	0.65 ▲	1.00 ▲

	Current	Δ from YD	Δ from 7D Avg
US ResComm	7.1 ▲	0.19 ▲	0.02 ▲

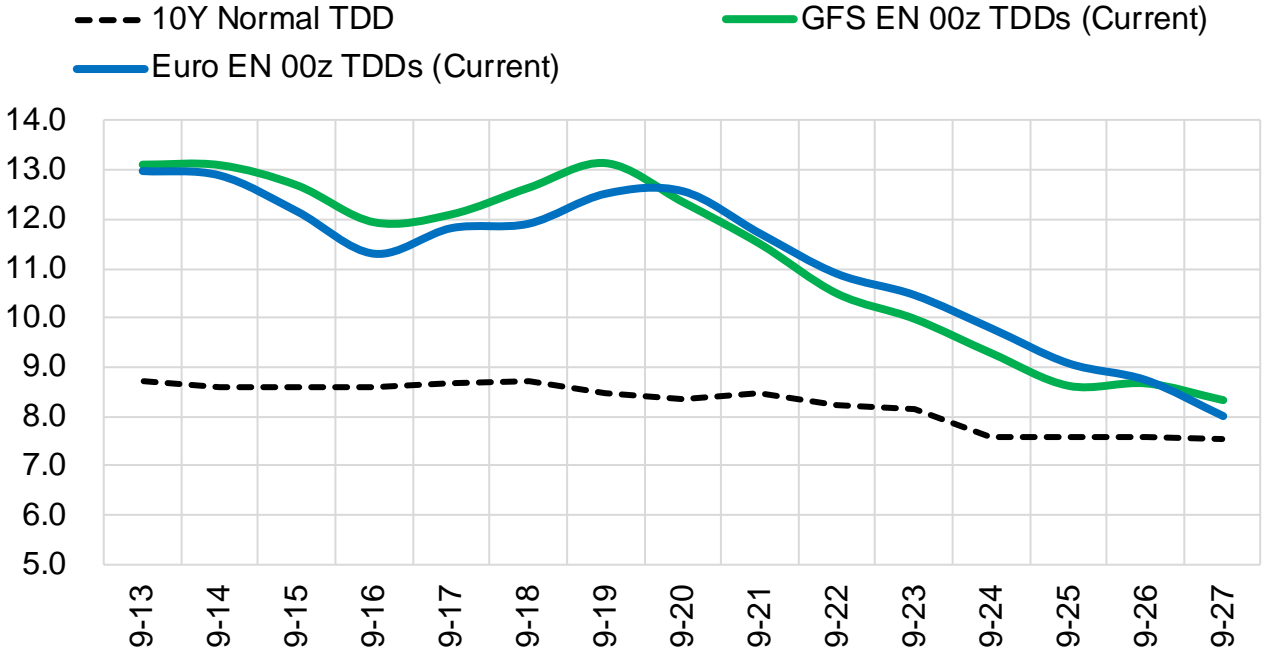
	Current	Δ from YD	Δ from 7D Avg
Canadian Imports	5.0 ▼	-0.12 ▼	0.00 ▼

	Current	Δ from YD	Δ from 7D Avg
Net LNG Exports	11.4 ▲	0.05 ▲	0.34 ▲

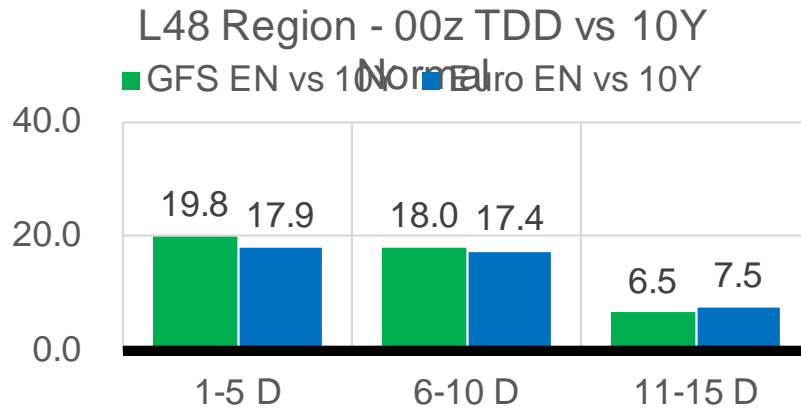
	Current	Δ from YD	Δ from 7D Avg
Mexican Exports	6.5 ▲	0.22 ▲	-0.18 ▼

Short-term Weather Model Outlooks (00z)

L48 Region



Vs. 10Y Normal



Source: WSI , Bloomberg

Lower 48 Component Models

Daily Balances

	7-Sep	8-Sep	9-Sep	10-Sep	11-Sep	12-Sep	13-Sep	DoD	vs. 7D
Lower 48 Dry Production	91.6	91.2	90.3	90.7	91.2	91.4	90.6	▼ -0.8	▼ -0.5
Canadian Imports	4.9	5.0	5.2	5.1	5.1	5.1	5.0	▼ -0.1	▼ 0.0
L48 Power	35.1	36.3	34.5	33.0	32.4	34.5	35.1	▲ 0.7	▲ 0.8
L48 Residential & Commercial	7.2	7.5	7.4	7.0	6.7	6.9	7.1	▲ 0.2	▼ 0.0
L48 Industrial	20.1	20.4	20.6	20.7	20.9	21.0	21.4	▲ 0.3	▲ 0.8
L48 Lease and Plant Fuel	5.0	5.0	5.0	5.0	5.0	5.0	5.0	▼ 0.0	▼ 0.0
L48 Pipeline Distribution	2.2	2.2	2.1	2.0	2.0	2.1	2.1	▲ 0.0	▲ 0.0
L48 Regional Gas Consumption	69.6	71.4	69.6	67.7	67.0	69.5	70.7	▲ 1.2	▲ 1.6
Net LNG Delivered	11.30	10.96	10.66	11.07	10.88	11.31	11.36	▲ 0.1	▲ 0.3
Total Mexican Exports	7.0	6.9	6.6	6.7	6.4	6.3	6.5	▲ 0.2	▼ -0.2
Implied Daily Storage Activity	8.6	7.0	8.6	10.3	11.9	9.4	7.1		
EIA Reported Daily Storage Activity									
Daily Model Error									

EIA Storage Week Balances

	6-Aug	13-Aug	20-Aug	27-Aug	3-Sep	10-Sep	WoW	vs. 4W
Lower 48 Dry Production	91.9	92.4	92.4	93.0	90.9	91.2	▲ 0.3	▼ -1.0
Canadian Imports	5.0	5.2	5.0	5.3	5.0	4.8	▼ -0.2	▼ -0.3
L48 Power	38.3	41.1	39.7	41.9	38.0	33.6	▼ -4.3	▼ -6.5
L48 Residential & Commercial	8.0	7.8	7.6	7.8	7.5	7.0	▼ -0.4	▼ -0.6
L48 Industrial	20.1	19.2	20.8	20.9	18.6	19.9	▲ 1.3	▼ 0.0
L48 Lease and Plant Fuel	5.1	5.1	5.1	5.1	5.0	5.0	▲ 0.0	▼ -0.1
L48 Pipeline Distribution	2.2	2.4	2.3	2.4	2.2	2.1	▼ -0.2	▼ -0.3
L48 Regional Gas Consumption	73.8	75.5	75.5	78.1	71.3	67.6	▼ -3.7	▼ -7.5
Net LNG Exports	10.6	9.9	10.9	10.6	10.5	11.0	▲ 0.5	▲ 0.5
Total Mexican Exports	6.9	6.8	6.8	6.8	7.0	6.7	▼ -0.3	▼ -0.2
Implied Daily Storage Activity	5.7	5.2	4.2	2.8	7.1	10.7	3.6	
EIA Reported Daily Storage Activity	7.0	6.6	4.1	2.9	7.4			
Daily Model Error	-1.3	-1.4	0.1	-0.1	-0.3			

Monthly Balances

	2Yr Ago Sep-18	LY Sep-18	May-21	Jun-21	Jul-21	Aug-21	MTD Sep-21	MoM	vs. LY
Lower 48 Dry Production	86.6	86.6	93.1	93.4	92.4	92.2	91.1	▼ -1.1	▲ 4.5
Canadian Imports	4.5	4.5	4.5	4.8	5.2	5.1	4.9	▼ -0.3	▲ 0.4
L48 Power	34.3	34.3	26.8	35.9	39.6	40.2	33.7	▼ -6.5	▼ -0.7
L48 Residential & Commercial	8.5	8.5	12.8	8.9	8.6	7.7	7.1	▼ -0.6	▼ -1.4
L48 Industrial	22.6	22.6	20.8	20.6	19.6	20.0	20.0	▼ -0.1	▼ -2.7
L48 Lease and Plant Fuel	4.8	4.8	5.1	5.1	5.1	5.1	5.0	▼ -0.1	▲ 0.2
L48 Pipeline Distribution	2.1	2.1	2.1	2.2	2.3	2.3	2.1	▼ -0.2	▲ 0.0
L48 Regional Gas Consumption	72.3	72.3	67.6	72.7	75.1	75.3	67.8	▼ -7.5	▼ -4.5
Net LNG Exports	3.1	3.1	10.8	10.2	10.8	10.5	10.9	▲ 0.4	▲ 7.8
Total Mexican Exports	5.0	5.0	6.8	7.4	7.0	6.9	6.7	▼ -0.2	▲ 1.7
Implied Daily Storage Activity	10.7	10.7	12.4	8.0	4.6	4.6	10.5		
EIA Reported Daily Storage Activity									
Daily Model Error									

Source: Bloomberg, analytix.ai

Daily Average Generation Data

Nuclear Generation Daily Average - GWh (NRC)

	5-Sep	6-Sep	7-Sep	8-Sep	9-Sep	10-Sep	11-Sep	DoD	vs. 7D
NRC Nuclear Daily Output	90.3	90.1	90.4	90.2	90.7	90.4	90.4	0.0	0.1
NRC Nuclear Max Capacity	104.9	104.9	104.9	104.9	104.9	104.9	104.9	0.0	0.0
NRC Nuclear Outage	14.5	14.8	14.5	14.7	14.2	14.4	14.4	0.0	-0.1
NRC % Nuclear Cap Utilization	91.8	91.6	91.9	91.7	92.2	92.0	92.0	0.0	0.1

Wind Generation Daily Average - MWh (EIA)

	5-Sep	6-Sep	7-Sep	8-Sep	9-Sep	10-Sep	11-Sep	DoD	vs. 7D
CALI Wind	624	917	1916	1499	1489	1933	1582	-351	186
TEXAS Wind	5319	4445	6387	6438	6940	13204	12093	-1110	4971
US Wind	21742	29088	44321	35146	25275	41396	51240	9844	18412

Generation Daily Average - MWh (EIA)

	5-Sep	6-Sep	7-Sep	8-Sep	9-Sep	10-Sep	11-Sep	DoD	vs. 7D
US Wind	21742	29088	44321	35146	25275	41396	51240	9844	18412
US Solar	13982	13961	14119	12961	12184	13809	13917	108	414
US Petroleum	1492	2272	2068	2067	2705	2206	2189	-17	54
US Other	8394	8601	9178	8953	8591	8259	8549	290	-114
US Coal	115401	113657	112319	119951	119792	110954	102157	-8797	-13189
US Nuke	93303	93181	92903	92842	93366	93090	90305	-2785	-2809
US Hydro	24557	25833	27671	27913	27947	25973	23680	-2293	-2969
US Gas	168105	177477	194259	201605	194771	171141	155924	-15217	-28636

See National Wind and Nuclear daily charts

Source: Bloomberg, analytix.ai

Storage Week Average Generation Data

Nuclear Generation Weekly Average - GWh (NRC)

	3-Sep	10-Sep	WoW	WoW Bcf/d Impact
NRC Nuclear Daily Output	90.2	90.3	0.1	0.0
NRC Nuclear Max Capacity	104.9	104.9	0.0	
NRC Nuclear Outage	14.7	14.6	-0.1	
NRC % Nuclear Cap Utilization	0.1	0.1	0.0	

Wind Generation Weekly Average - MWh (EIA)

	3-Sep	10-Sep	WoW	WoW Bcf/d Impact
CALI Wind	2247	1236	-1010	0.2
TEXAS Wind	7534	7327	-206	0.0
US Wind	35348	30632	-4716	0.8
	-6462.0			
	-15%			

Generation Weekly Average - MWh (EIA)

	3-Sep	10-Sep	WoW	WoW Bcf/d Impact
US Wind	35348	30632	-4716	0.8
US Solar	13423	14014	591	-0.1
US Petroleum	3135	2072	-1063	0.2
US Other	9767	8745	-1022	0.2
US Coal	136296	116869	-19427	3.5
US Nuke	92365	93162	797	-0.1
US Hydro	28159	26934	-1225	0.2
US Gas	205501	180587	-24913	4.5

See National Wind and Nuclear daily charts

Source: Bloomberg, analytix.ai

Monthly Average Generation Data

Nuclear Generation Monthly Average - GWh (NRC)

	2Yr Ago	LY					MTD		
	Same 30 days	Same 30 days	Jun-21	Jul-21	Aug-21	Sep-21	Last 30 days	MoM (MTD vs LY)	Last 30 days YoY
	NRC Nuclear Daily Output	93.3	90.1	88.7	90.1	91.5	90.3	91.0	-1.2
NRC Nuclear Max Capacity	104.9	104.9	104.9	104.9	104.9	104.9	104.9	0.0	0.0
NRC Nuclear Outage	11.6	14.8	16.2	14.8	13.4	14.6	13.9	1.2	-0.9
NRC % Nuclear Cap Utilization	94.8	91.6	90.2	91.6	93.0	91.8	92.5	-1.2	0.9

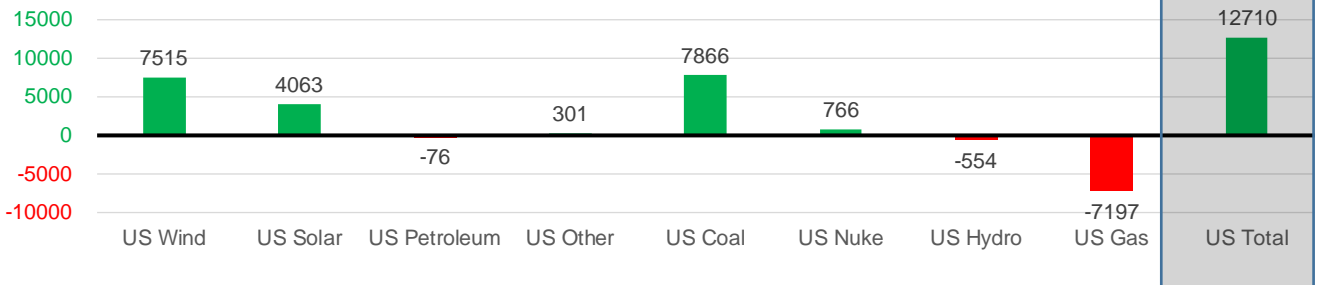
Wind Generation Monthly Average - MWh (EIA)

	2Yr Ago	LY					MTD		
	Same 30 days	Same 30 days	Jun-21	Jul-21	Aug-21	Sep-21	Last 30 days	MoM (MTD vs LY)	Last 30 days YoY
	CALI Wind	2317	1605	2881	2338	2442	1683	2029	-759
TEXAS Wind	8041	7251	9509	7217	9901	9514	9326	-387	2075
US Wind	29636	29296	36827	29106	35740	38268	36811	2529	7515

Generation Monthly Average - MWh (EIA)

	2Yr Ago	LY					MTD		
	Same 30 days	Same 30 days	Jun-21	Jul-21	Aug-21	Sep-21	Last 30 days	MoM (MTD vs LY)	Last 30 days YoY
	US Wind	29636	29296	36827	29106	35740	38268	36811	▼-1457.1
US Solar	8668	9715	14578	14195	13849	13920	13777	▼-143.0	▲ 4063
US Petroleum	4456	3562	4155	4233	4484	2147	3486	▲ 1339	▼ -76
US Other	8622	9194	8208	9327	9929	8702	9496	▲ 794	▲ 301
US Coal	117599	119325	122034	137228	137649	114243	127191	▲ 12947	▲ 7866
US Nuke	99748	92544	92180	92911	94062	92432	93310	▲ 878	▲ 766
US Hydro	29469	28601	32565	29941	28528	26367	28047	▲ 1680	▼ -554
US Gas	205981	203833	189395	207814	210806	174036	196636	▲ 16037	▼ -7197
US Total	506006	496024	500272	524889	534991	470225	508734	▲ 33532	▲ 12710

Last 30 days YoY



See National Wind and Nuclear daily charts

Source: Bloomberg, analytix.ai

Regional S/D Models Storage Projection

Week Ending 10-Sep

	Daily Raw Storage	Daily Adjustment Factor	Daily Average Storage Activity (Adjusted) *	Weekly Adjusted Storage Activity
L48	10.4	0.6	10.9	77
East	3.0	1.0	4.1	28
Midwest	5.6	-0.2	5.4	38
Mountain	4.0	-3.3	0.6	4
South Central	-2.5	3.5	1.0	7
Pacific	0.3	-0.4	-0.1	-1

*Adjustment Factor is calculated based on historical regional deltas

U.S. underground natural gas storage facilities by type (July 2015)

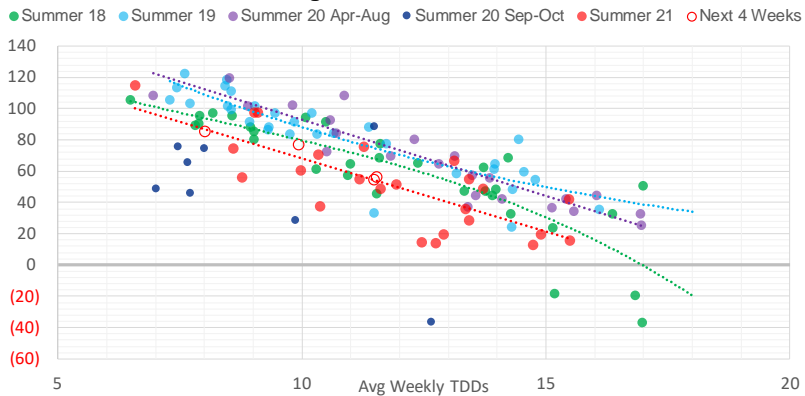


Weather Model Storage Projection

Next report
and beyond

Week Ending	GWDDs	Week Storage Projection
10-Sep	9.9	77
17-Sep	11.5	54
24-Sep	11.5	56
01-Oct	8.0	85

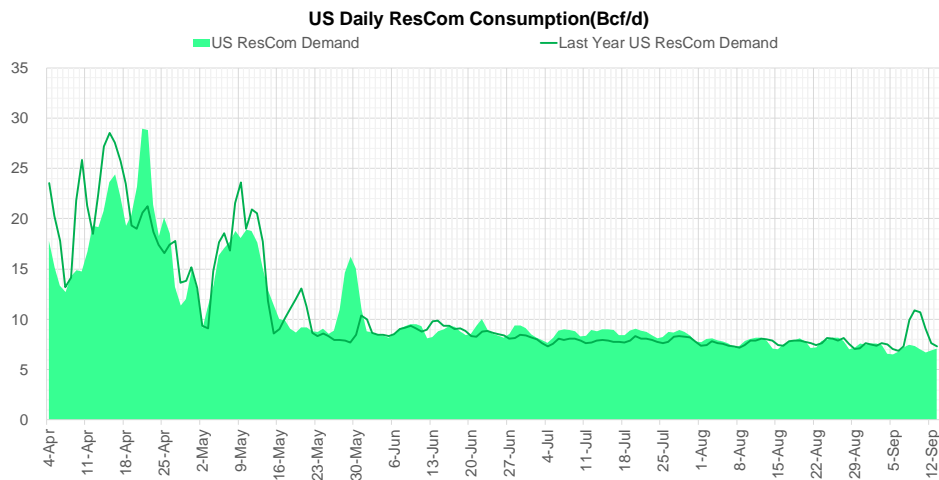
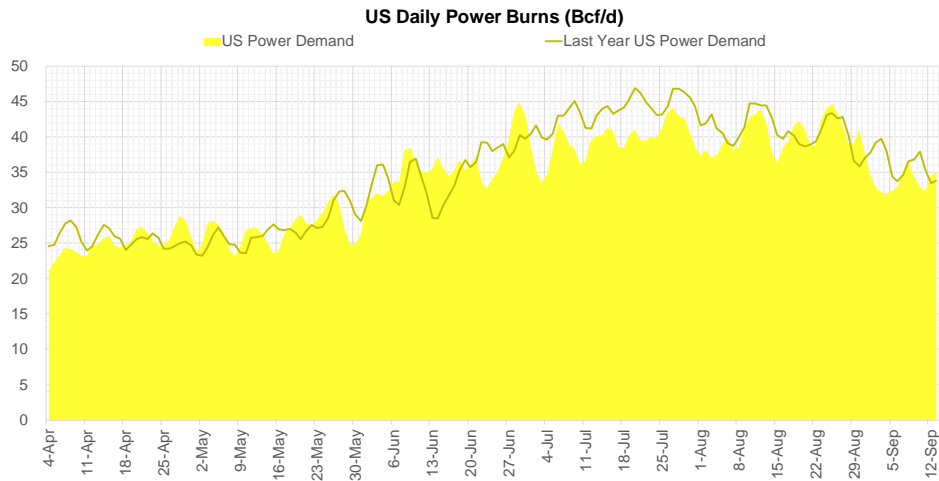
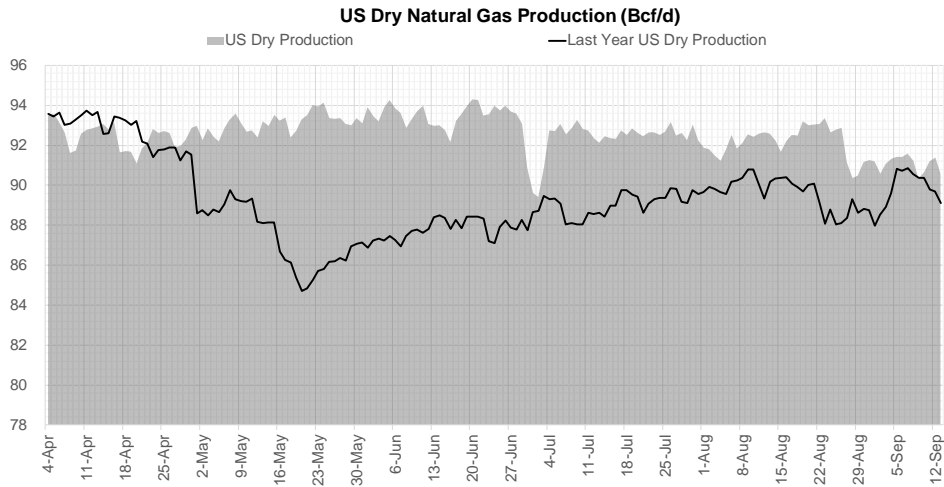
Weather Storage Model - Next 4 Week Forecast



Go to larger image



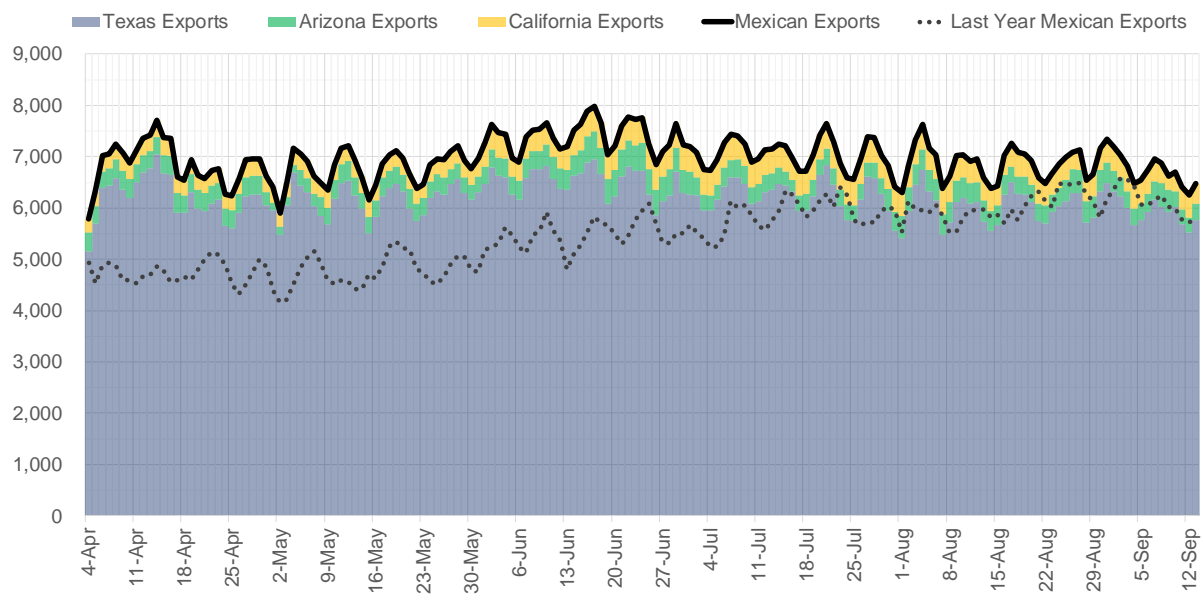
Supply – Demand Trends



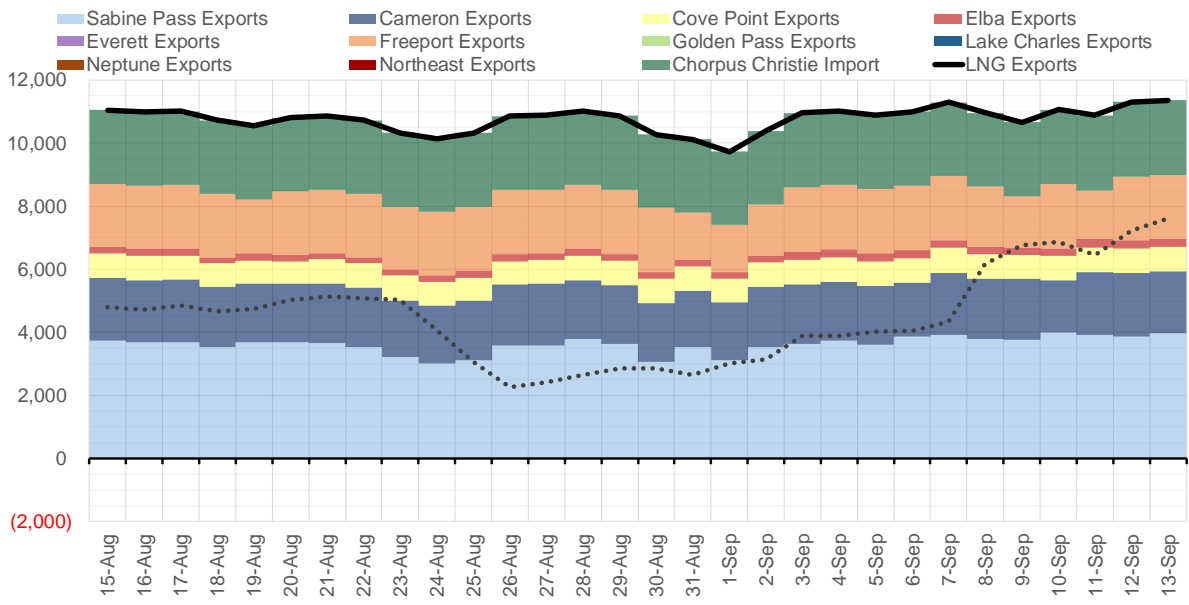
Source: Bloomberg

The risk of trading futures and options and other derivatives involves a substantial risk of loss and is not suitable for all persons. Each person must consider whether a particular trade, combination of trades, or strategy is suitable for that person's financial means and objectives. Past results are not necessarily indicative of future results. This communication may contain links to third party websites which are not under the control of and are not maintained by ION Energy Group, and ION Energy Group is not responsible for their content.

Mexican Exports (MMcf/d)



Net LNG Exports - Last 30 days (MMcf/d)



Source: Bloomberg

The risk of trading futures and options and other derivatives involves a substantial risk of loss and is not suitable for all persons. Each person must consider whether a particular trade, combination of trades, or strategy is suitable for that person's financial means and objectives. Past results are not necessarily indicative of future results. This communication may contain links to third party websites which are not under the control of and are not maintained by ION Energy Group, and ION Energy Group is not responsible for their content.

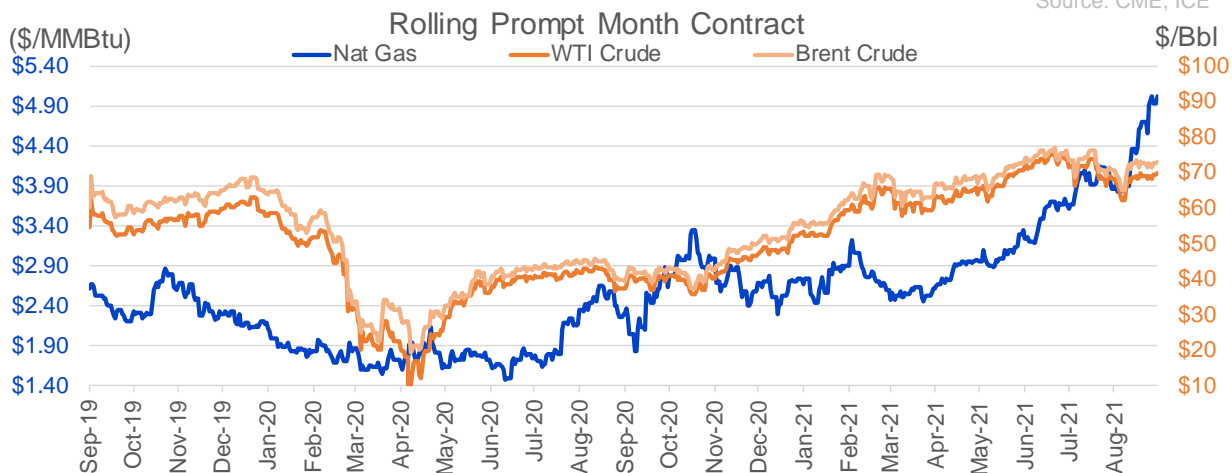
Nat Gas Options Volume and Open Interest CME, ICE and Nasdaq Combined

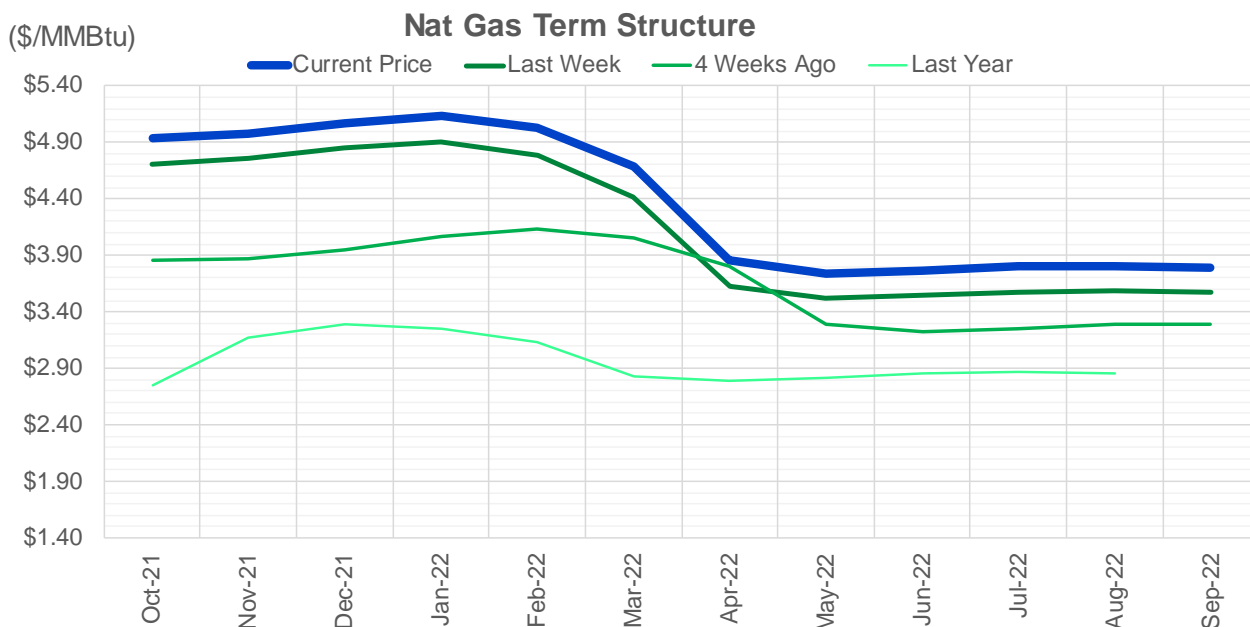
CONTRACT MONTH	CONTRACT YEAR	PUT/CALL	STRIKE	CUMULATIVE VOL	CONTRACT MONTH	CONTRACT YEAR	PUT/CALL	STRIKE	CUMULATIVE OI
10	2021	C	6.00	7343	10	2021	C	5.00	58438
11	2021	C	6.00	6405	10	2021	C	4.00	42329
12	2022	C	5.00	6350	12	2021	P	2.75	42059
10	2021	C	5.25	6306	10	2021	P	3.50	41987
10	2021	P	4.50	5985	10	2021	C	4.50	41142
11	2021	P	4.50	5079	10	2021	C	6.00	39200
10	2021	C	5.00	4715	12	2021	P	2.50	38542
10	2021	P	4.25	4451	10	2021	C	3.50	32999
12	2022	C	4.50	4400	10	2021	C	4.25	32432
10	2021	C	5.50	4027	10	2021	P	3.00	31758
10	2021	P	4.75	3832	10	2021	P	4.00	31230
12	2021	C	7.00	3628	11	2021	P	3.00	30721
4	2022	P	2.50	3250	10	2021	P	2.50	29994
5	2022	P	2.50	3250	10	2021	P	2.00	28650
6	2022	P	2.50	3250	10	2021	C	3.25	28193
7	2022	P	2.50	3250	10	2021	P	2.75	26887
8	2022	P	2.50	3250	12	2021	P	3.00	25878
9	2022	P	2.50	3250	11	2021	C	4.00	23312
10	2022	P	2.50	3250	12	2021	C	4.00	22648
10	2021	C	5.75	3038	10	2021	P	3.75	22580
3	2022	C	5.00	2933	3	2022	C	10.00	22020
11	2021	C	5.50	2751	11	2021	P	4.00	21668
1	2022	P	3.50	2743	12	2021	P	4.00	21511
10	2021	P	5.00	2660	10	2021	P	2.25	19784
10	2021	P	4.40	2570	4	2022	C	3.00	19760
11	2021	P	4.25	2525	11	2021	P	3.50	19588
4	2022	C	5.00	2428	10	2021	C	5.50	19427
10	2021	C	5.10	2400	3	2022	C	5.00	18750
11	2021	P	4.00	2388	10	2021	P	4.25	18745
10	2022	C	5.00	2275	10	2021	C	3.00	18494
7	2022	C	5.00	2225	3	2022	C	8.00	18228
8	2022	C	5.00	2225	3	2022	P	3.50	18080
9	2022	C	5.00	2225	10	2021	P	3.25	17940
3	2022	C	7.00	2201	10	2021	P	4.50	17507
4	2022	P	2.25	2200	11	2021	C	7.00	17434
5	2022	P	2.25	2200	1	2022	C	5.00	17186
6	2022	P	2.25	2200	3	2022	P	2.50	16805
7	2022	P	2.25	2200	10	2021	C	3.75	16780
8	2022	P	2.25	2200	11	2021	C	5.00	16612
9	2022	P	2.25	2200	2	2022	C	5.00	16590
10	2022	P	2.25	2200	10	2021	C	5.75	16269
12	2021	P	4.00	2180	3	2022	C	4.00	16024
5	2022	C	5.00	2175	2	2022	C	4.00	15821
6	2022	C	5.00	2175	11	2021	C	6.00	15608
12	2021	C	10.00	2139	11	2021	C	4.50	15220
11	2021	C	7.00	2135	2	2022	P	3.50	14638
11	2022	P	2.25	2100	1	2022	C	4.00	14503
11	2022	P	2.50	2100	11	2021	P	2.50	14486
11	2022	P	2.50	2100	11	2021	C	3.75	14481
12	2022	P	2.25	2100	4	2022	P	2.5	14309

Source: CME, ICE

Nat Gas Futures Open Interest CME, and ICE Combined

CME Henry Hub Futures (10,000 MMBtu)				ICE Henry Hub Futures Contract Equivalent (10,000 MM			
	Current	Prior	Daily Change		Current	Prior	Daily Change
OCT 21	177779	196825	-19046	OCT 21	105697	105123	573
NOV 21	223599	224230	-631	NOV 21	75286	76765	-1479
DEC 21	88524	91390	-2866	DEC 21	77043	77523	-480
JAN 22	155953	154346	1607	JAN 22	89189	88155	1034
FEB 22	60043	58640	1403	FEB 22	68474	68872	-399
MAR 22	117008	117776	-768	MAR 22	72191	71196	994
APR 22	117668	117166	502	APR 22	68461	68660	-199
MAY 22	115663	114069	1594	MAY 22	68854	68706	148
JUN 22	40490	38876	1614	JUN 22	52150	51931	219
JUL 22	30468	29394	1074	JUL 22	53383	53287	97
AUG 22	32759	32309	450	AUG 22	53754	53594	160
SEP 22	34997	35029	-32	SEP 22	53980	53701	279
OCT 22	86489	86344	145	OCT 22	60996	60964	32
NOV 22	32193	31884	309	NOV 22	47321	47181	139
DEC 22	25262	25023	239	DEC 22	50339	50356	-17
JAN 23	22072	22110	-38	JAN 23	37076	36848	228
FEB 23	8252	8251	1	FEB 23	30323	30349	-26
MAR 23	11414	10646	768	MAR 23	32615	32615	1
APR 23	11709	11462	247	APR 23	28831	28848	-17
MAY 23	7296	7220	76	MAY 23	29350	29360	-10
JUN 23	5451	5447	4	JUN 23	27284	27301	-17
JUL 23	4055	4053	2	JUL 23	27383	27432	-49
AUG 23	3221	3241	-20	AUG 23	27227	27275	-48
SEP 23	4150	4151	-1	SEP 23	26585	26567	18
OCT 23	6009	5605	404	OCT 23	28452	28501	-49
NOV 23	1979	2011	-32	NOV 23	27894	28091	-197
DEC 23	1865	1832	33	DEC 23	26554	25958	596
JAN 24	1142	1142	0	JAN 24	14632	14638	-6
FEB 24	890	890	0	FEB 24	12153	12146	7
MAR 24	3222	3268	-46	MAR 24	16329	16322	8





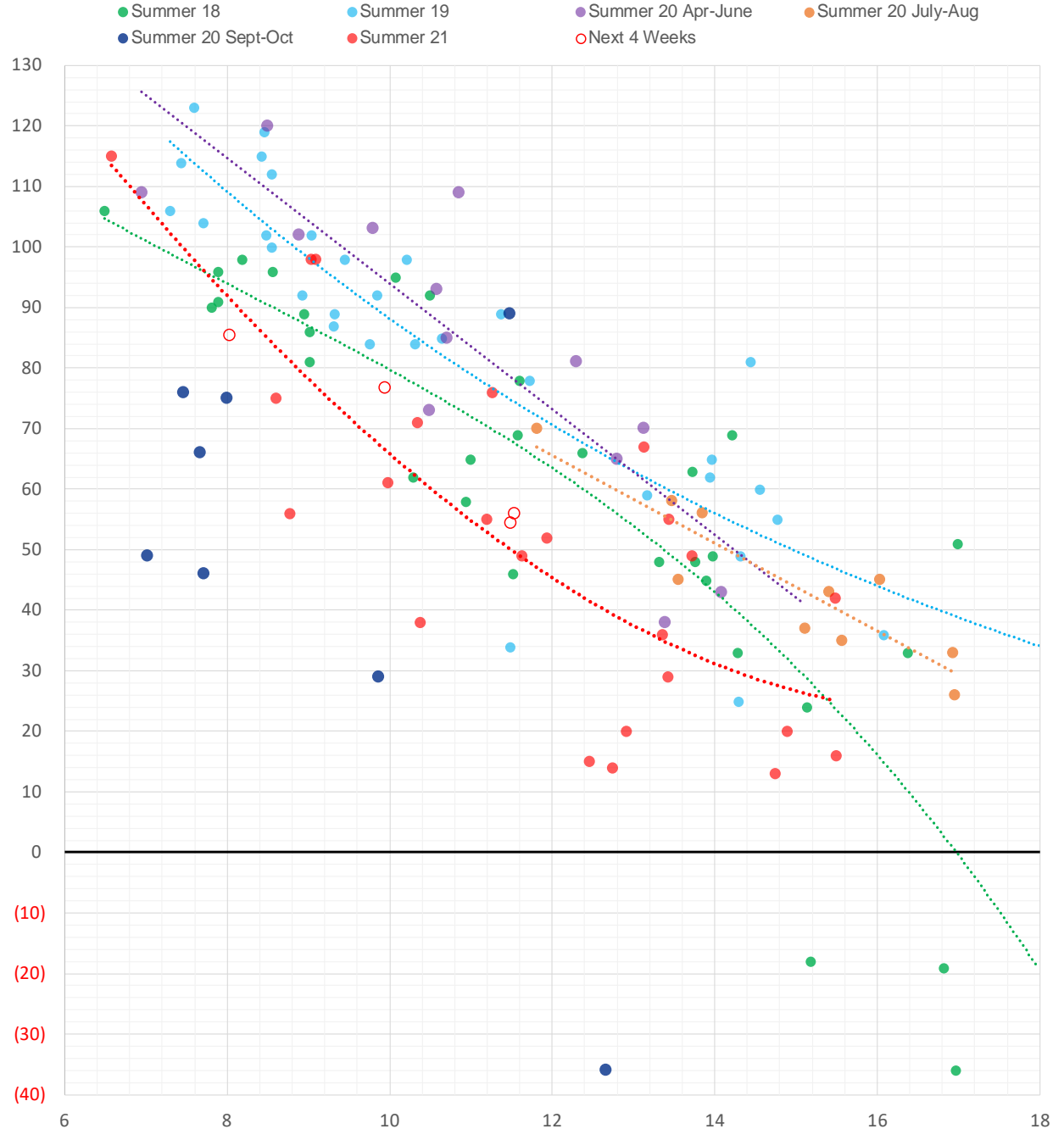
	Oct-21	Nov-21	Dec-21	Jan-22	Feb-22	Mar-22	Apr-22	May-22	Jun-22	Jul-22	Aug-22	Sep-22
Current Price	\$4.938	\$4.973	\$5.067	\$5.129	\$5.028	\$4.680	\$3.854	\$3.742	\$3.770	\$3.802	\$3.809	\$3.794
Last Week	\$4.712	\$4.762	\$4.850	\$4.905	\$4.791	\$4.420	\$3.628	\$3.521	\$3.549	\$3.579	\$3.587	\$3.568
vs. Last Week	\$0.226	\$0.211	\$0.217	\$0.224	\$0.237	\$0.260	\$0.226	\$0.221	\$0.221	\$0.223	\$0.222	\$0.226
4 Weeks Ago	\$3.861	\$3.875	\$3.949	\$4.070	\$4.135	\$4.058	\$3.808	\$3.289	\$3.222	\$3.251	\$3.285	\$3.293
vs. 4 Weeks Ago	\$1.077	\$1.098	\$1.118	\$1.059	\$0.893	\$0.622	\$0.046	\$0.453	\$0.548	\$0.551	\$0.524	\$0.501
Last Year	\$2.269	\$2.744	\$3.165	\$3.290	\$3.253	\$3.138	\$2.826	\$2.788	\$2.817	\$2.854	\$2.866	\$2.854
vs. Last Year	\$2.669	\$2.229	\$1.902	\$1.839	\$1.775	\$1.542	\$1.028	\$0.954	\$0.953	\$0.948	\$0.943	\$0.940

	Units	Cash Settled	Prompt Settle	Cash to Prompt
AGT Citygate	\$/MMBtu	4.45	4.34	-0.11
TETCO M3	\$/MMBtu	4.29	3.44	-0.85
FGT Zone 3	\$/MMBtu	4.34	4.80	0.46
Zone 6 NY	\$/MMBtu	4.34	3.30	-1.04
Chicago Citygate	\$/MMBtu	4.81	4.59	-0.22
Michcon	\$/MMBtu	4.78	4.51	-0.28
Columbia TCO Pool	\$/MMBtu	4.32	3.63	-0.69
Ventura	\$/MMBtu	4.68	4.56	-0.13
Rockies/Opal	\$/MMBtu	5.06	4.49	-0.57
El Paso Permian Basin	\$/MMBtu	4.71	4.42	-0.29
Socal Citygate	\$/MMBtu	7.54	5.34	-2.20
Malin	\$/MMBtu	5.07	4.88	-0.20
Houston Ship Channel	\$/MMBtu	4.89	4.81	-0.08
Henry Hub Cash	\$/MMBtu	5.05	4.52	-0.53
AECO Cash	C\$/GJ	3.29	3.03	-0.26
Station2 Cash	C\$/GJ	3.18	4.98	1.80
Dawn Cash	C\$/GJ	4.75	4.48	-0.27

Source: CME, Bloomberg

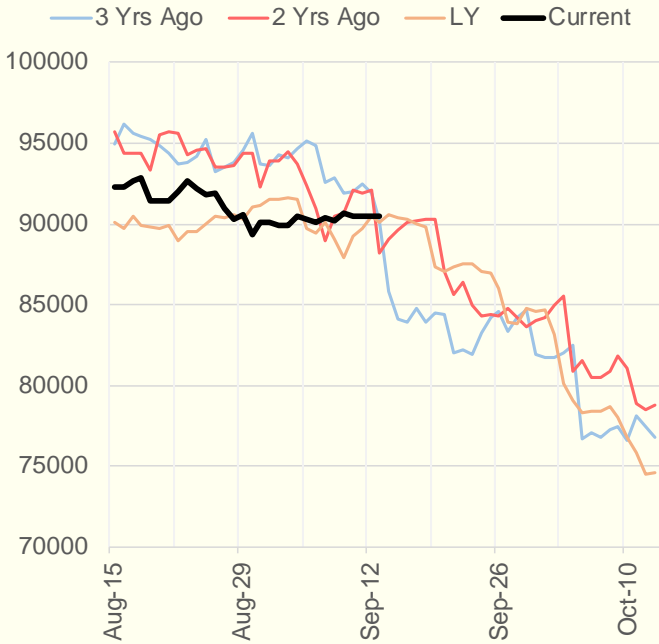
	Units	Current Price	vs. Last Week	vs. 4 Weeks Ago	vs. Last Year
NatGas Jul21/Oct21	\$/MMBtu	1.321	▲ 0.226	▲ 1.063	▲ 1.298
NatGas Oct21/Nov21	\$/MMBtu	0.035	▼ -0.015	▼ -0.039	▼ -0.016
NatGas Oct21/Jan22	\$/MMBtu	0.191	▼ -0.002	▼ -0.069	▼ -0.088
NatGas Apr22/Oct22	\$/MMBtu	-0.032	▲ 0.001	▼ -0.044	▼ -0.056
WTI Crude	\$/Bbl	69.72	▲ 0.430	▲ 1.280	▲ 32.390
Brent Crude	\$/Bbl	72.92	▲ 0.310	▲ 2.330	▲ 33.090
Fuel Oil, NY Harbour 1%	\$/Bbl	97.18	▲ 0.000	▲ 0.000	▲ 0.000
Heating Oil	cents/Gallon	214.60	▼ -1.340	▲ 6.810	▲ 105.640
Propane, Mt. Bel	cents/Gallon	1.21	▲ 0.021	▲ 0.088	▲ 0.739
Ethane, Mt. Bel	cents/Gallon	0.37	▲ 0.009	▲ 0.035	▲ 0.163
Coal, PRB	\$/MTon	12.30	▲ 0.000	▲ 0.000	▲ 0.000
Coal, PRB	\$/MMBtu	0.70			
Coal, ILB	\$/MTon	31.05	▲ 0.000	▲ 0.000	▲ 0.000
Coal, ILB	\$/MMBtu	1.32			

Weather Storage Model - Next 4 Week Forecast

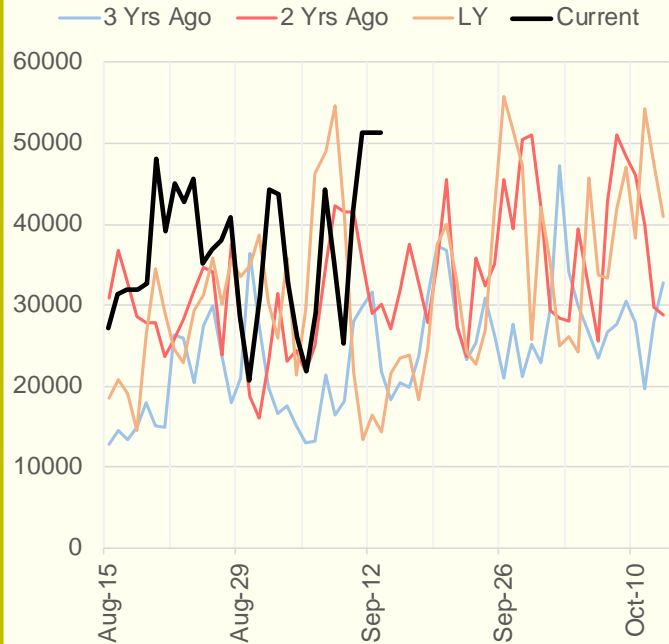


The risk of trading futures and options and other derivatives involves a substantial risk of loss and is not suitable for all persons. Each person must consider whether a particular trade, combination of trades, or strategy is suitable for that person's financial means and objectives. Past results are not necessarily indicative of future results. This communication may contain links to third party websites which are not under the control of and are not maintained by ION Energy Group, and ION Energy Group is not responsible for their content.

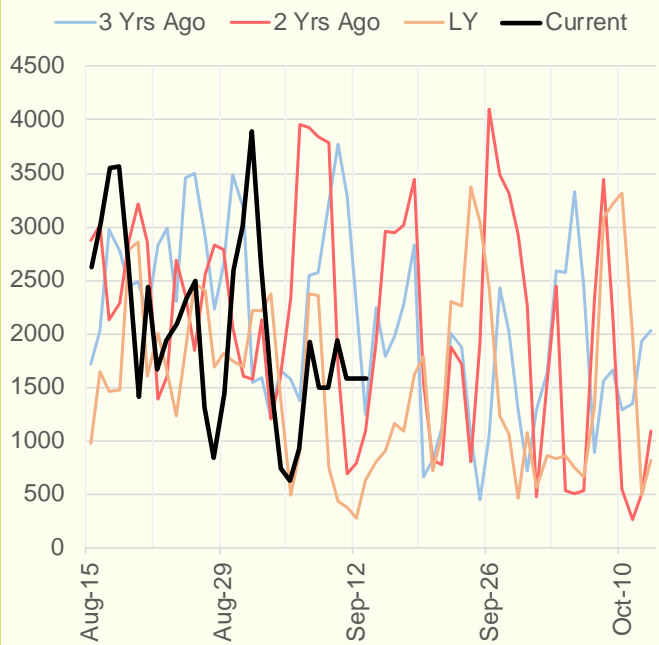
NRC Nuclear Daily Output



US Wind



CALI Wind



TEXAS Wind

