

# CFTC COMMITMENT OF TRADERS REPORT

As of 8/24/2021

## TRADITIONAL FUNDS net position changes

Wed to Tue, in 000 contracts

	Corn	Bean	Meal	Oil	Chi. Wheat	KC Wheat	Min Wheat
Futures Only	(14.9)	(14.8)	(5.2)	0.5	(11.7)	0.3	1.4
Futures & Options Combined	(13.7)	(15.1)	(7.8)	(1.6)	(13.7)	(1.2)	1.0

## TRADITIONAL COMMERCIAL net position changes

	Corn	Bean	Meal	Oil	Chi. Wheat	KC Wheat	Min Wheat
Futures Only	14.3	20.2	10.4	(1.1)	10.9	(0.7)	(0.7)
Futures & Options Combined	18.1	22.6	12.9	1.2	12.5	0.7	(0.2)

## MANAGED MONEY net position changes

	Corn	Bean	Meal	Oil	Chi. Wheat	KC Wheat	Min Wheat
Futures Only	(11.2)	(15.1)	(6.9)	(2.3)	(13.8)	1.2	0.8
Futures & Options Combined	(7.9)	(14.0)	(7.0)	(2.1)	(12.2)	0.8	0.9

## SWAP DEALERS net position changes

	Corn	Bean	Meal	Oil	Chi. Wheat	KC Wheat	Min Wheat
Futures Only	(3.0)	6.2	0.1	(0.2)	5.3	(0.9)	(0.1)
Futures & Options Combined	1.3	6.9	0.6	(0.5)	5.3	(0.4)	0.1

## PRODUCERS/END USERS net position changes

	Corn	Bean	Meal	Oil	Chi. Wheat	KC Wheat	Min Wheat
Futures Only	17.3	14.0	10.3	(0.9)	5.6	0.2	(0.6)
Futures & Options Combined	16.8	15.7	12.3	1.7	7.2	1.1	(0.4)

## INDEX net position changes

	Corn	Bean	Meal	Oil	Chi. Wheat	KC Wheat	Min Wheat
Futures & Options Combined	(5.0)	0.6	0.2	(0.2)	0.1	(0.4)	NA

## SUPPLEMENTAL NON-COMMERCIAL net position changes

	Corn	Bean	Meal	Oil	Chi. Wheat	KC Wheat	Min Wheat
Futures & Options Combined	(8.7)	(9.7)	(8.1)	(0.8)	(12.9)	(0.8)	NA

## OPEN INTEREST net position changes

Wed to Tue, in 000 contracts

	Corn	Bean	Meal	Oil	Chi. Wheat	KC Wheat	Min Wheat
Futures Only	8.4	18.8	(3.5)	(11.1)	6.7	2.9	(4.3)
Futures & Options Combined	(4.2)	21.5	(3.1)	(6.5)	4.4	2.3	(4.5)

Source: CFTC and FI

Wed to Tue, in 000 contracts

8/27/2021

**COMMITMENT OF TRADERS  
FUTURES ONLY NET POSITIONS  
AS OF 08/24/2021  
(IN THOUSAND CONTRACTS)**

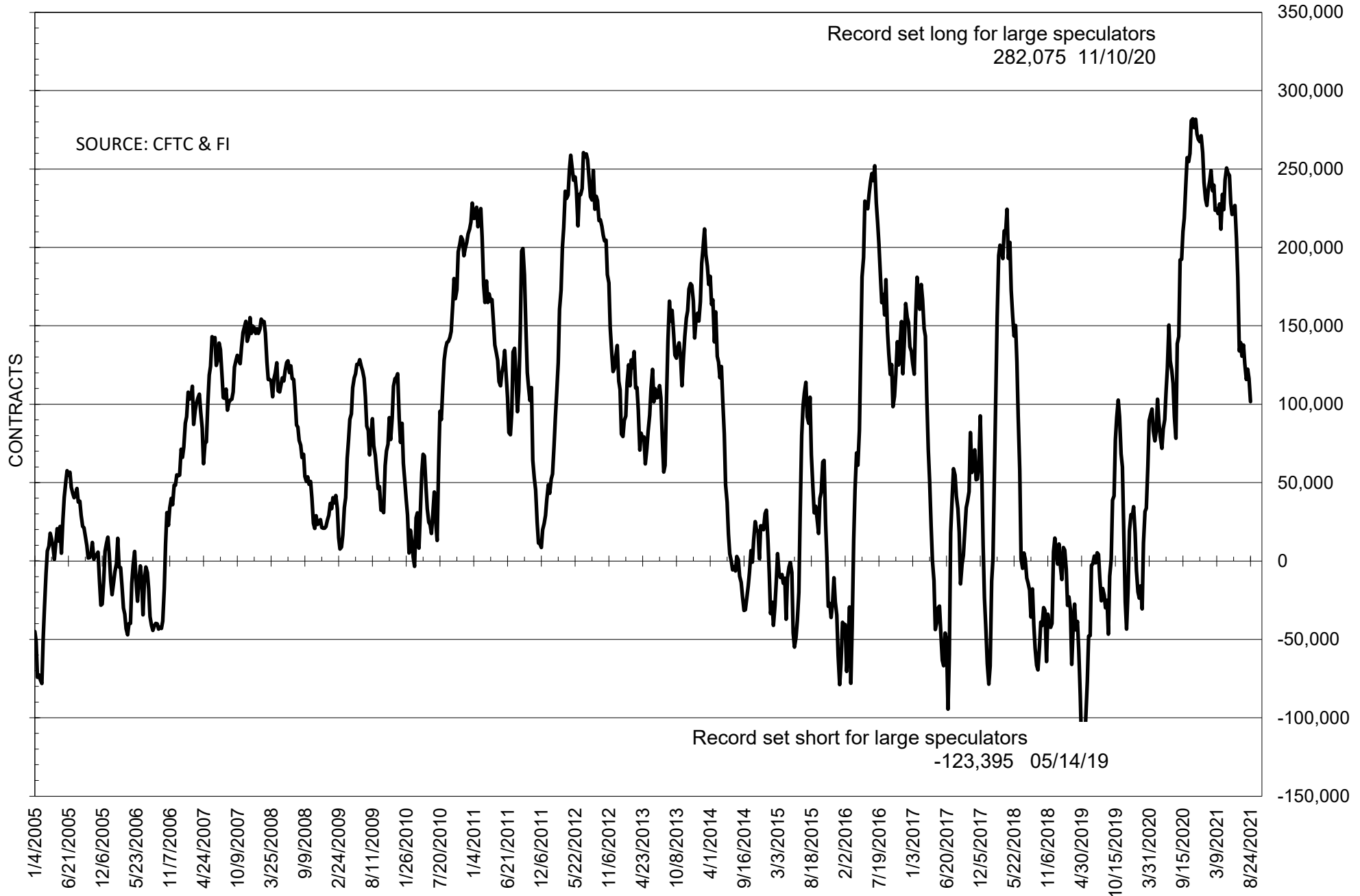
	COMMERCIAL				(FUND) NON COMMERCIAL				(SPEC) NON-REPORTABLE			
	24-Aug	17-Aug	10-Aug	3-Aug	24-Aug	17-Aug	10-Aug	3-Aug	24-Aug	17-Aug	10-Aug	3-Aug
	<b>WHEAT</b>											
Chicago	-25.2	-36.1	-31.5	-28.2	35.0	46.8	43.6	41.0	-9.8	-10.7	-12.2	-12.8
Kansas City	-44.2	-43.5	-39.9	-34.7	41.9	41.6	40.7	36.6	2.3	1.9	-0.8	-1.9
Minneapolis	-29.0	-28.2	-25.6	-24.6	19.6	18.2	15.1	13.7	9.3	10.0	10.5	10.9
All Wheat	-98.4	-107.9	-97.0	-87.5	96.6	106.7	99.5	91.3	1.8	1.2	-2.4	-3.8
<b>CORN</b>	-256.7	-271.0	-250.3	-251.9	331.0	345.8	321.6	318.0	-74.3	-74.9	-71.3	-66.1
<b>OATS</b>	-1.7	-1.9	-1.9	-1.8	0.8	0.8	0.7	0.6	1.0	1.0	1.3	1.1
<b>SOYBEANS</b>	-80.4	-100.6	-106.5	-101.9	101.6	116.4	122.4	115.8	-21.2	-15.8	-15.9	-13.9
<b>SOY OIL</b>	-72.0	-70.9	-69.6	-66.9	65.0	64.6	63.4	62.8	7.0	6.3	6.2	4.1
<b>SOY MEAL</b>	-67.4	-77.8	-72.9	-65.4	49.7	54.9	52.9	47.0	17.7	22.9	20.1	18.4

Oats positions thin to be reported

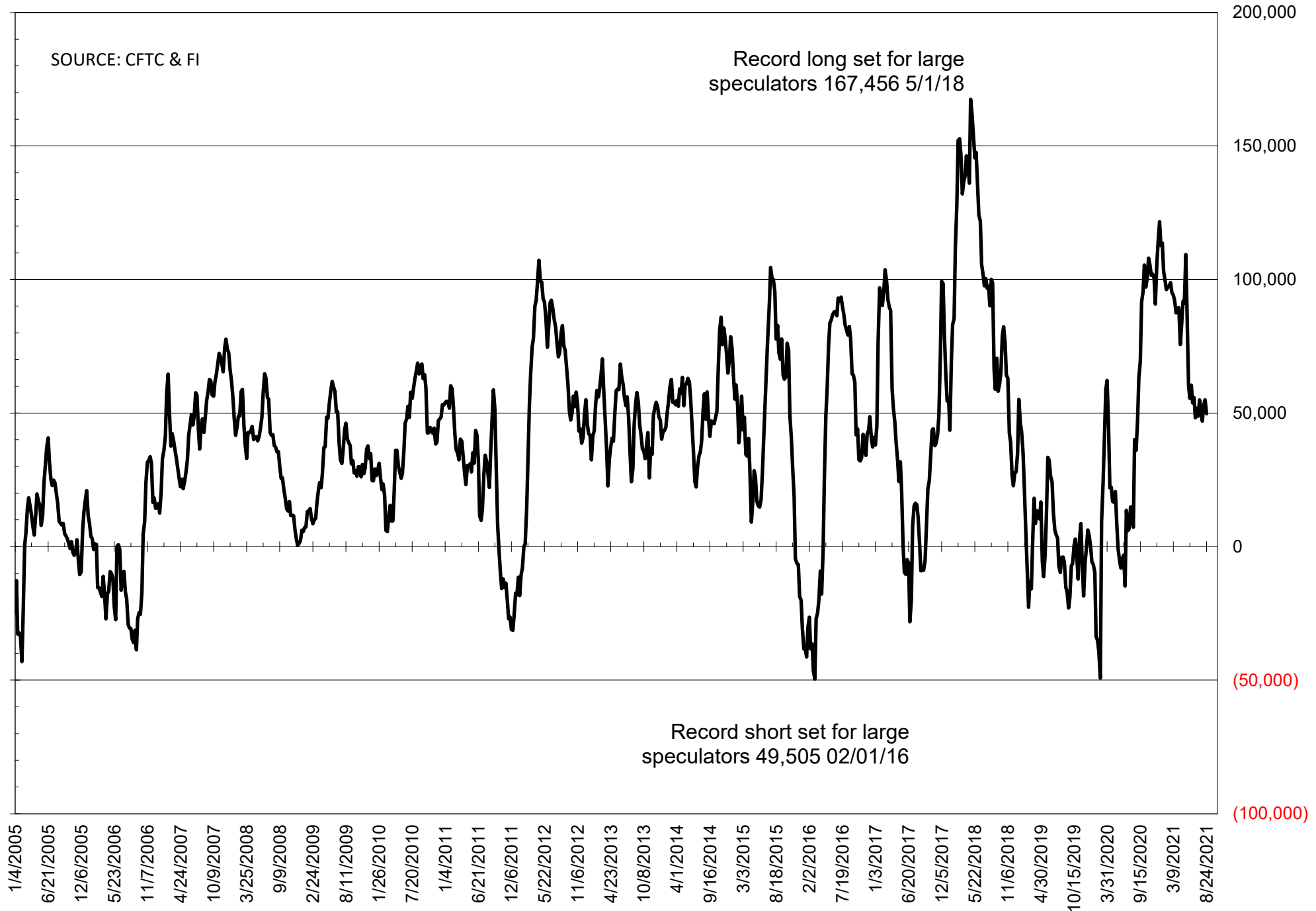
	TOTAL OPEN INTEREST				NEARBY FUTURES PRICE					24-Aug-21 LAST REPORTED % HELD BY TRADERS			
	24-Aug	17-Aug	10-Aug	3-Aug	U Latest	U 24-Aug	U 17-Aug	U 10-Aug	U 3-Aug	LARGE FUND		SMALL	
										LONG	SHORT	LONG	SHORT
<b>WHEAT</b>													
Chicago	396979	390322	382959	373529		718.00	734.50	727.00	724.50	0%	25%	0%	10%
Kansas City	232626	229763	230837	225807		704.25	716.75	714.25	707.50	0%	20%	0%	9%
Minneapolis	73041	77366	78501	81057		930.75	921.00	916.50	919.75	0%	3%	0%	14%
<b>CORN</b>	1443764	1435341	1424121	1471063		544.50	558.25	549.25	550.50	0%	6%	0%	13%
<b>OATS</b>	4832	4660	4485	4473		509.00	507.50	467.25	445.00	0%	6%	0%	32%
<b>SOYBEANS</b>	684606	665803	660007	655874		1337.00	1369.00	1248.25	1328.75	26%	11%	6%	10%
<b>SOY OIL</b>	425628	436726	435486	438467		61.09	62.54	61.19	62.45	0%	9%	0%	6%
<b>SOY MEAL</b>	364085	367632	362641	358871		354.90	360.10	357.50	347.50	0%	9%	0%	8%

SOURCE: CFTC & FI

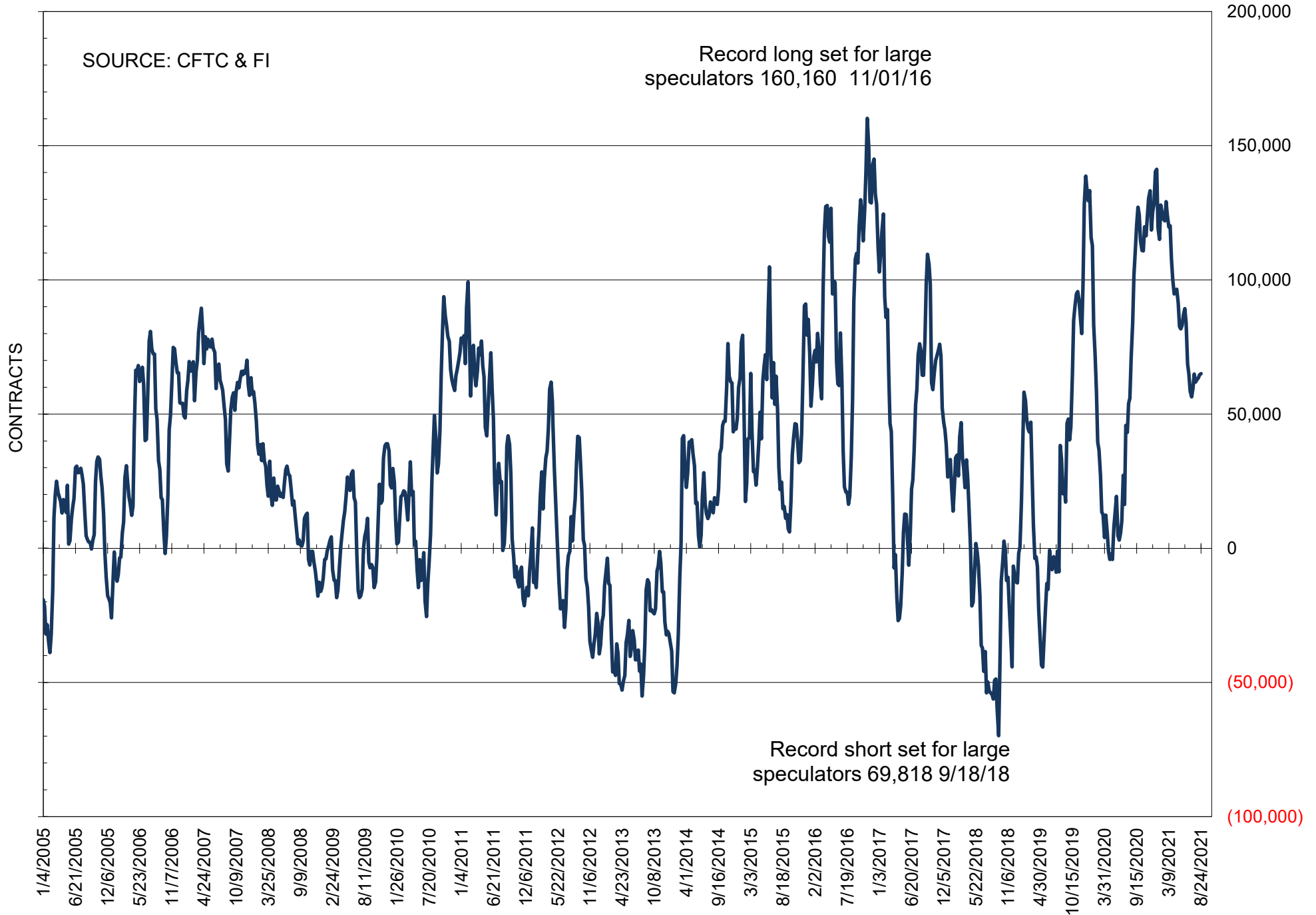
# NET POSITION OF FUTURES ONLY LARGE SPECS IN SOYBEANS



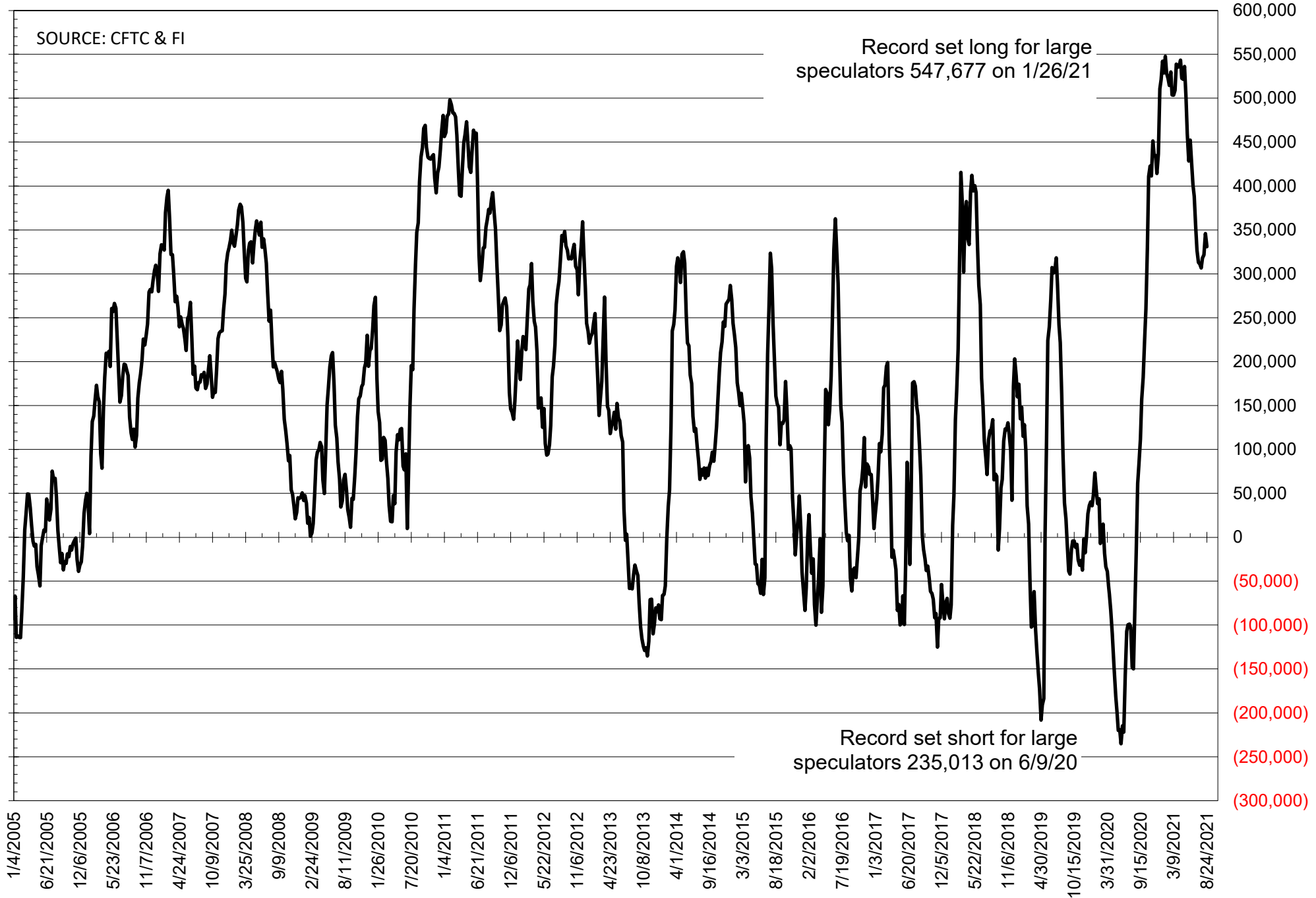
# NET POSITION OF FUTURES ONLY LARGE SPECS IN SOYMEAL



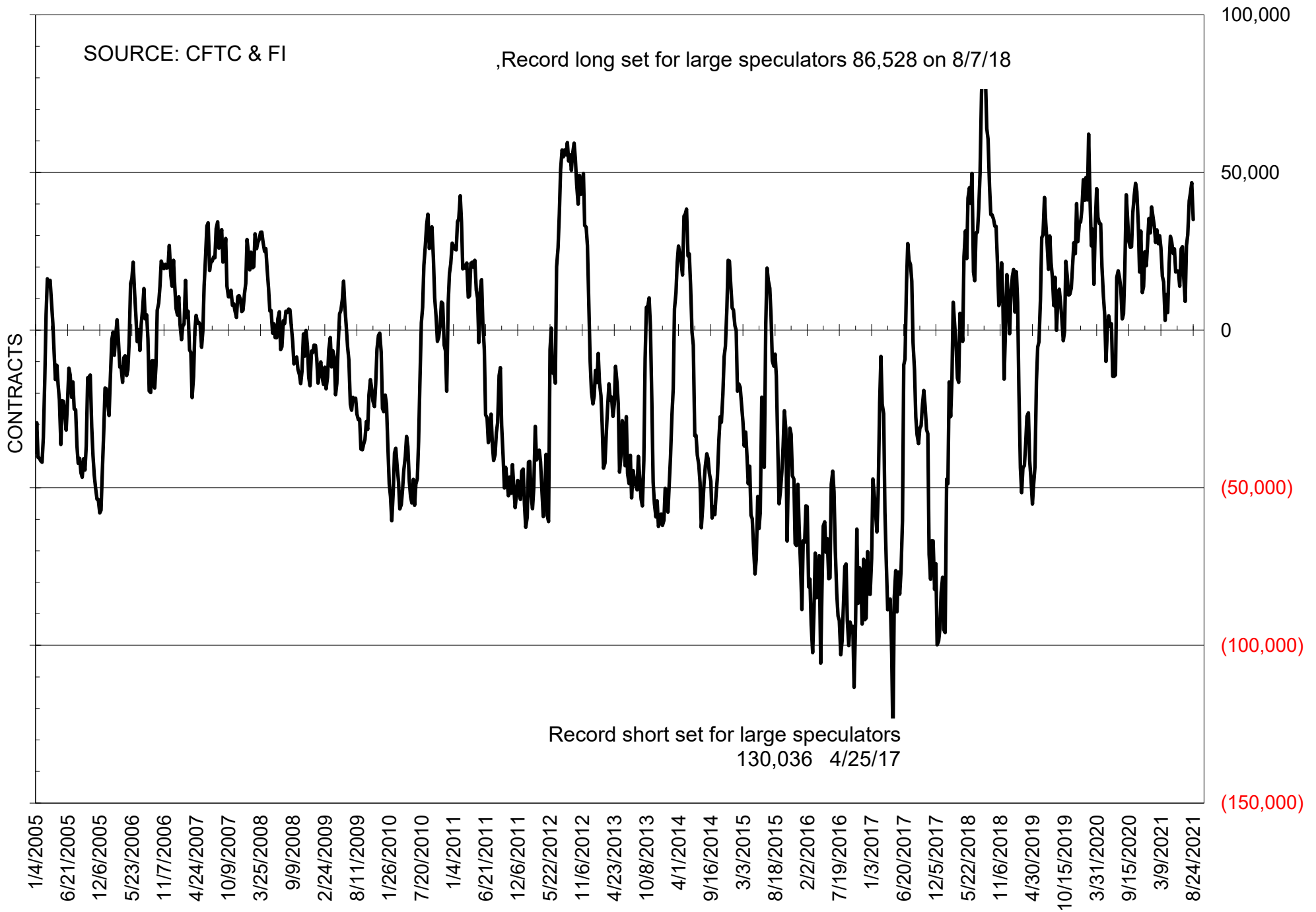
# NET POSITION OF FUTURES ONLY LARGE SPECS IN SOYOIL



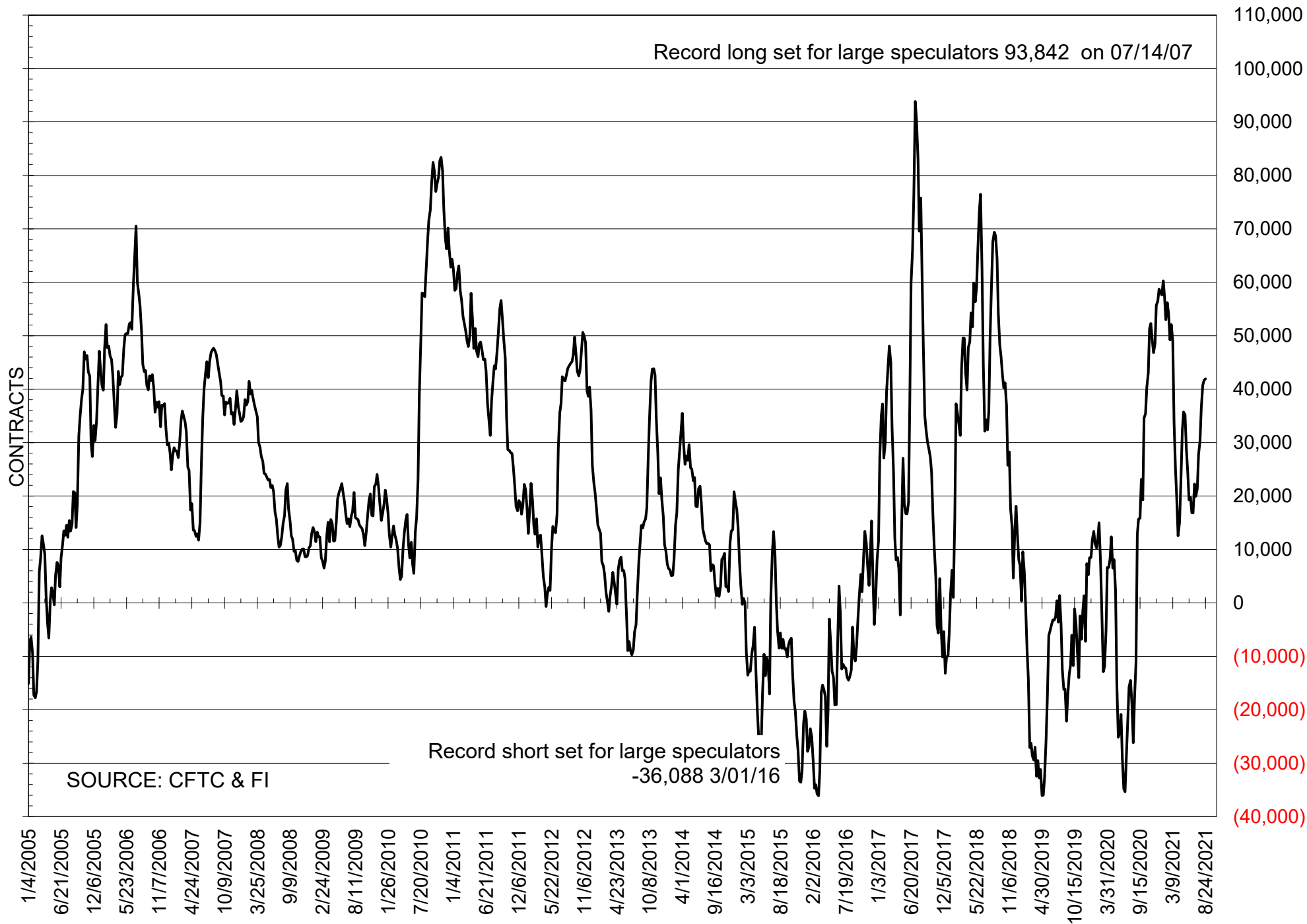
# NET POSITION OF LARGE SPECULATORS IN CORN



# NET POSITION OF FUTURES ONLY LARGE SPECS IN CHICAGO WHEAT

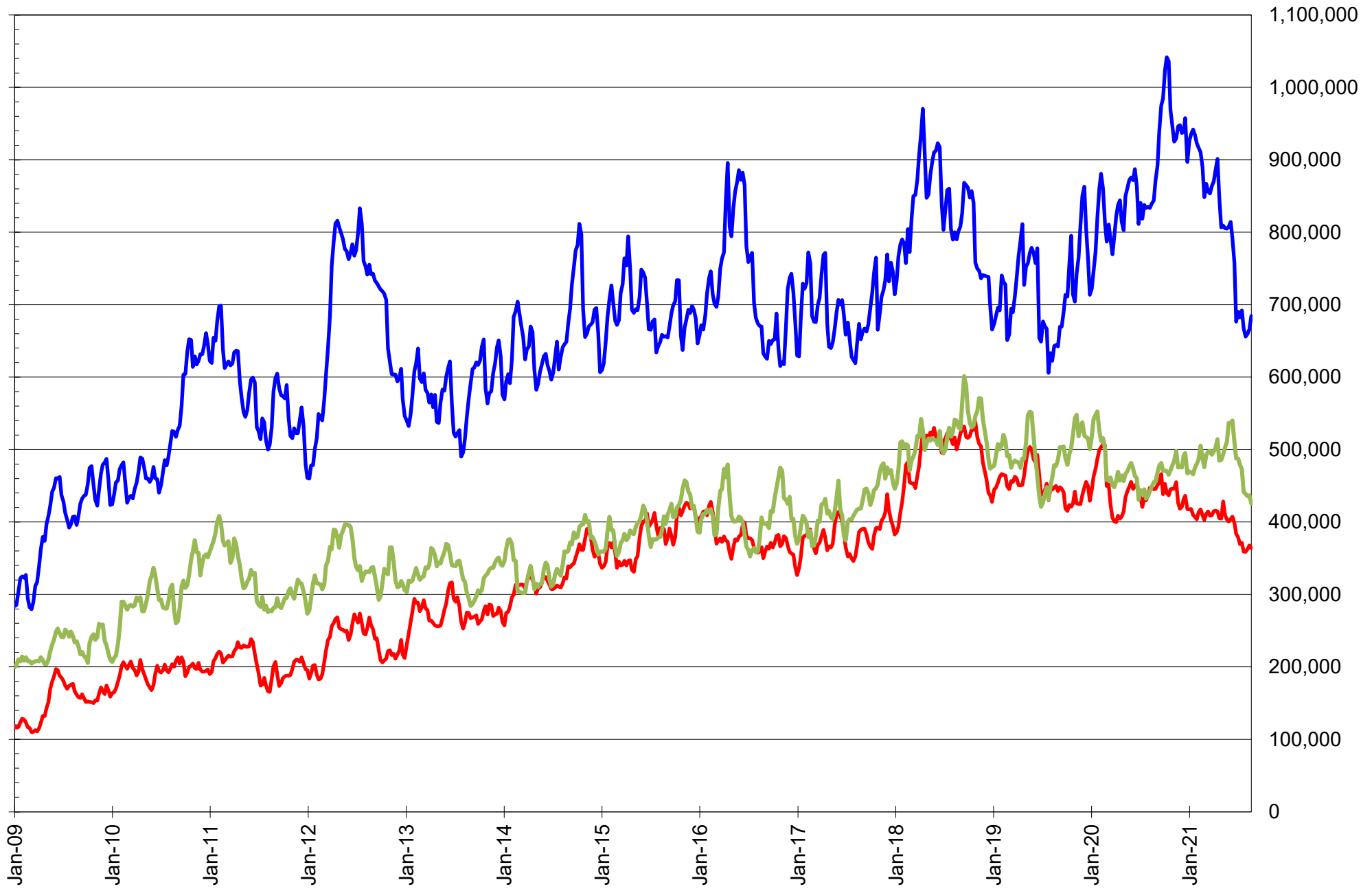


# NET POSITION OF LARGE SPECULATORS IN KANSAS CITY WHEAT





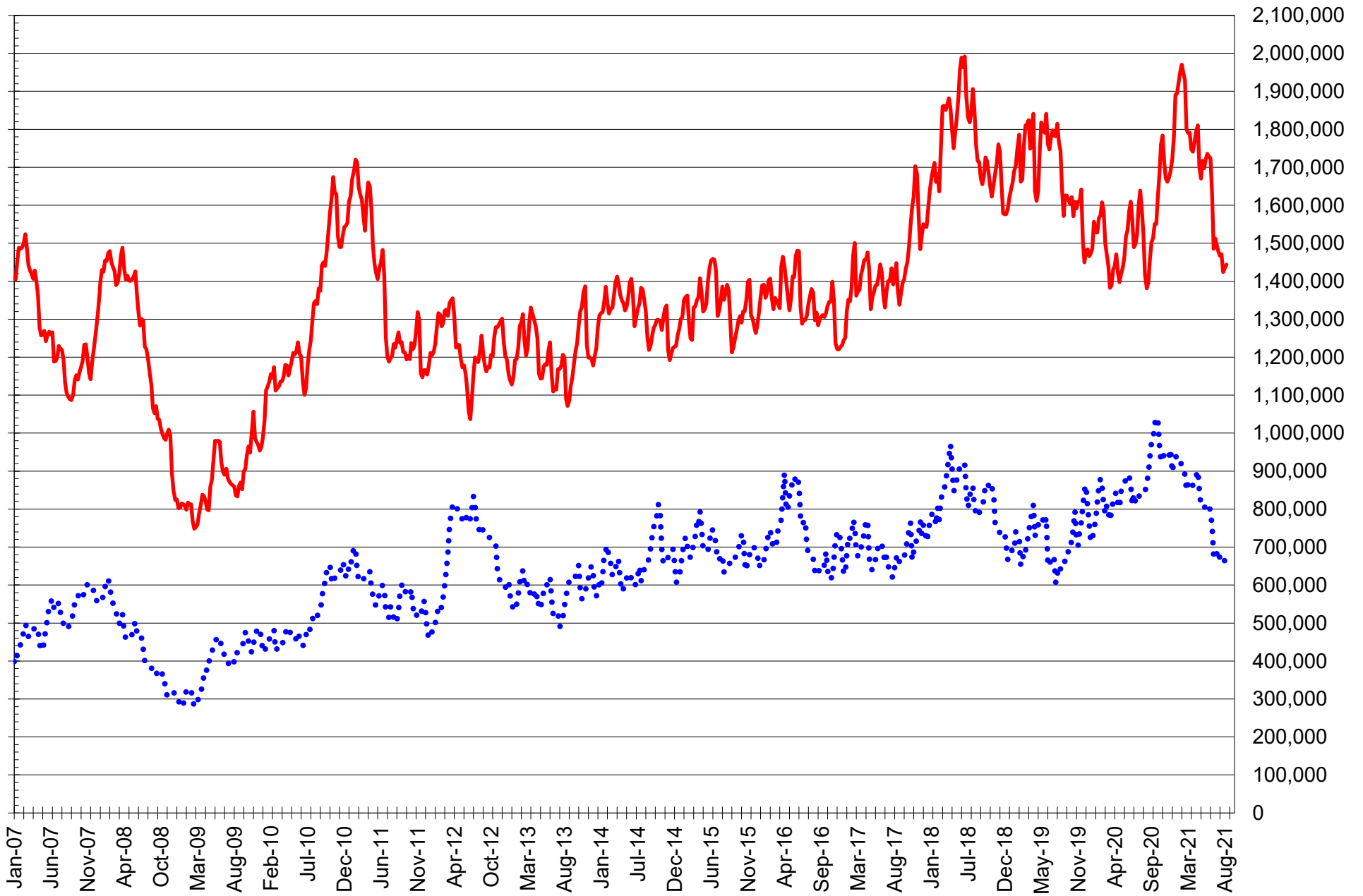
# TOTAL OPEN INTEREST IN SOYBEANS, MEAL AND OIL, FUTURES ONLY



SOURCE: CFTC & FI

— SOYBEANS — SOYBEAN MEAL — SOYBEAN OIL

# TOTAL OPEN INTEREST IN CORN AND SOYBEANS, FUTURES ONLY



SOURCE: CFTC & FI

— CORN

..... SOYBEANS

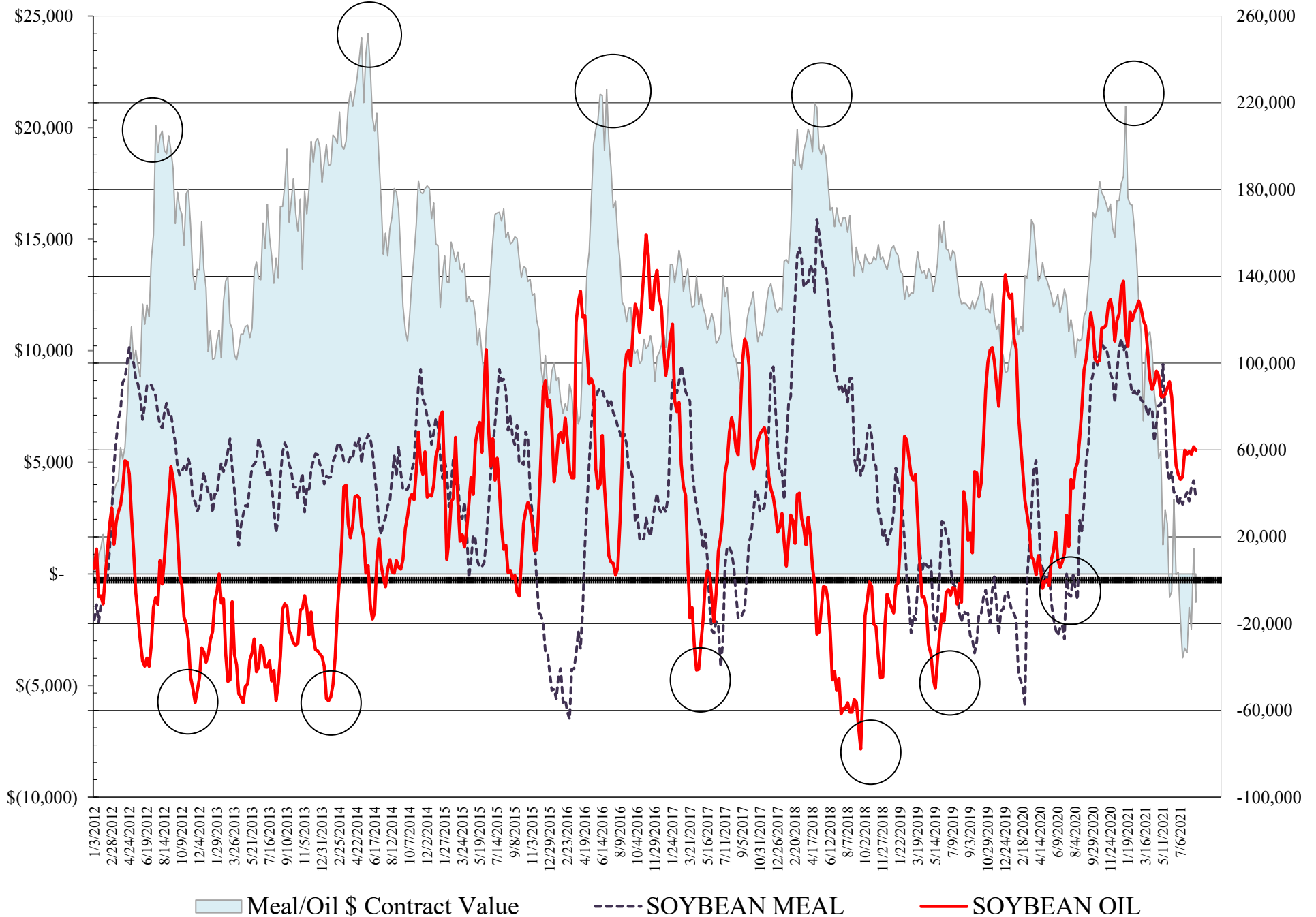
**COMMITMENT OF TRADERS  
FUTURES & OPTIONS NET POSITIONS  
AS OF 08/24/2021  
(IN THOUSAND CONTRACTS)**

	COMMERCIAL				(FUND) NON COMMERCIAL				(SPEC) NON-REPORTABLE			
	24-Aug	17-Aug	10-Aug	3-Aug	24-Aug	17-Aug	10-Aug	3-Aug	24-Aug	17-Aug	10-Aug	3-Aug
	<b>WHEAT</b>											
Chicago	-17.4	-29.9	-26.3	-24.6	26.8	40.5	38.5	37.4	-9.4	-10.6	-12.2	-12.8
Kansas City	-43.7	-44.4	-40.5	-35.3	41.2	42.4	40.9	36.6	2.5	2.0	-0.3	-1.3
Minneapolis	-28.5	-28.3	-25.9	-25.0	18.8	17.7	14.8	13.2	9.7	10.5	11.1	11.7
All Wheat	-89.6	-102.6	-92.8	-84.8	86.8	100.6	94.1	87.2	2.8	2.0	-1.4	-2.4
<b>CORN</b>	-257.5	-275.6	-254.4	-256.9	338.9	352.6	327.6	323.7	-81.4	-77.0	-73.2	-66.8
OATS	-1.8	-1.9	-2.0	-1.8	0.8	0.9	0.7	0.7	0.9	1.0	1.2	1.1
<b>SOYBEANS</b>	-57.9	-80.5	-79.3	-70.2	80.5	95.7	94.9	84.2	-22.7	-15.2	-15.6	-14.0
SOY OIL	-67.1	-68.3	-64.2	-63.4	59.9	61.5	57.9	59.3	7.3	6.9	6.3	4.1
SOY MEAL	-59.9	-72.8	-66.8	-58.6	38.1	45.9	42.7	36.3	21.8	27.0	24.1	22.3

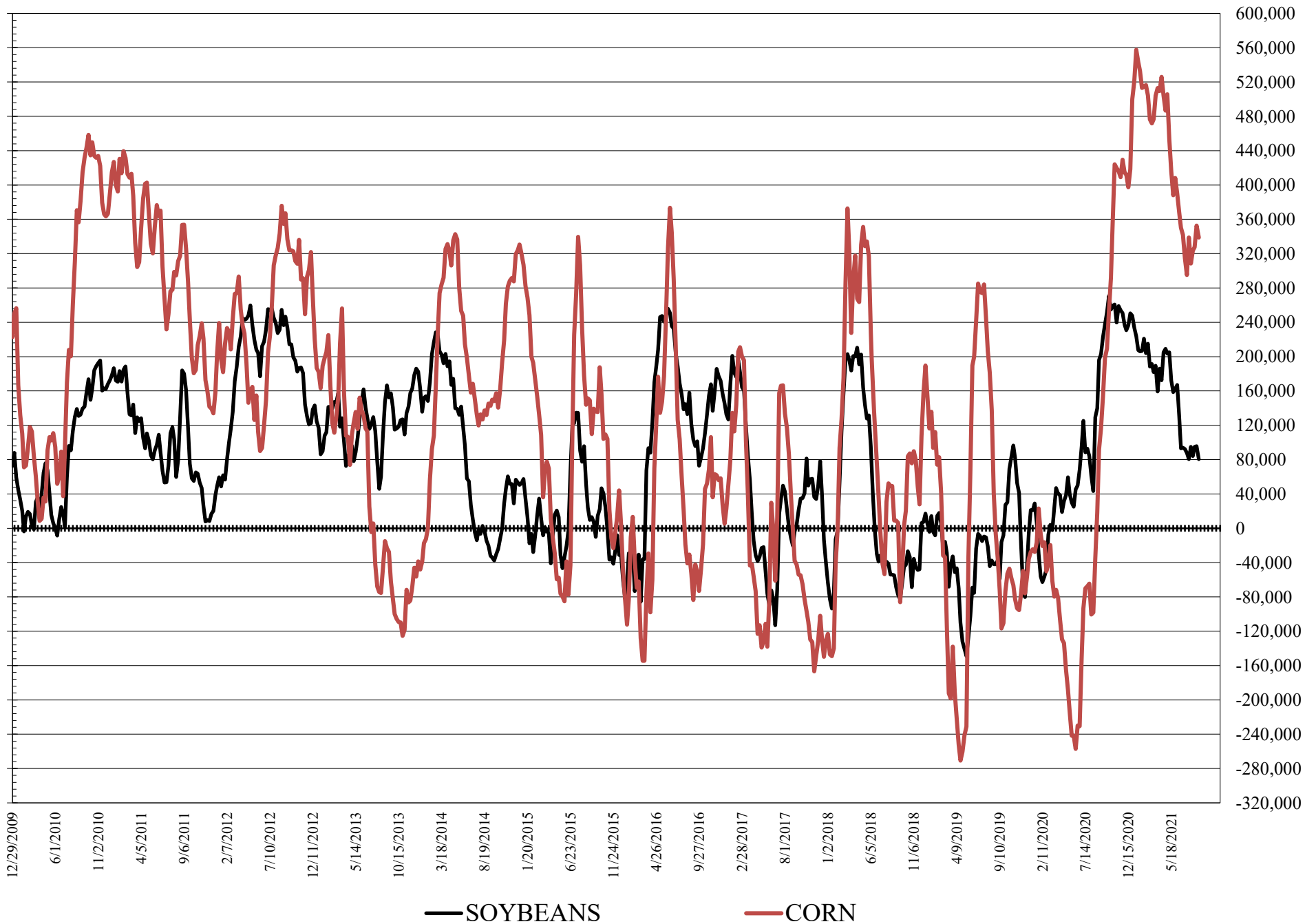
	TOTAL OPEN INTEREST				COMMERCIALS		% HELD BY TRADERS LARGE (FUNDS)		SMALL (NON-REP)	
	24-Aug	17-Aug	10-Aug	3-Aug	LONG	SHORT	LONG	SHORT	LONG	SHORT
	<b>WHEAT</b>									
Chicago	498,801	494,409	476,360	464,439	35%	39%	23%	18%	7%	9%
Kansas City	259,263	256,929	253,628	247,412	36%	52%	34%	18%	9%	8%
Minneapolis	80,280	84,752	85,925	88,863	37%	73%	26%	2%	26%	14%
<b>CORN</b>	1,985,043	1,989,268	1,973,657	1,992,118	42%	55%	20%	3%	8%	12%
OATS	5,082	4,902	4,699	4,687						
<b>SOYBEANS</b>	899,684	878,154	873,847	867,297	49%	56%	17%	8%	6%	9%
SOY OIL	495,595	502,103	501,924	504,327	46%	60%	19%	7%	7%	5%
SOY MEAL	404,589	407,639	402,359	399,064	50%	65%	18%	8%	13%	7%

SOURCE: CFTC & FI

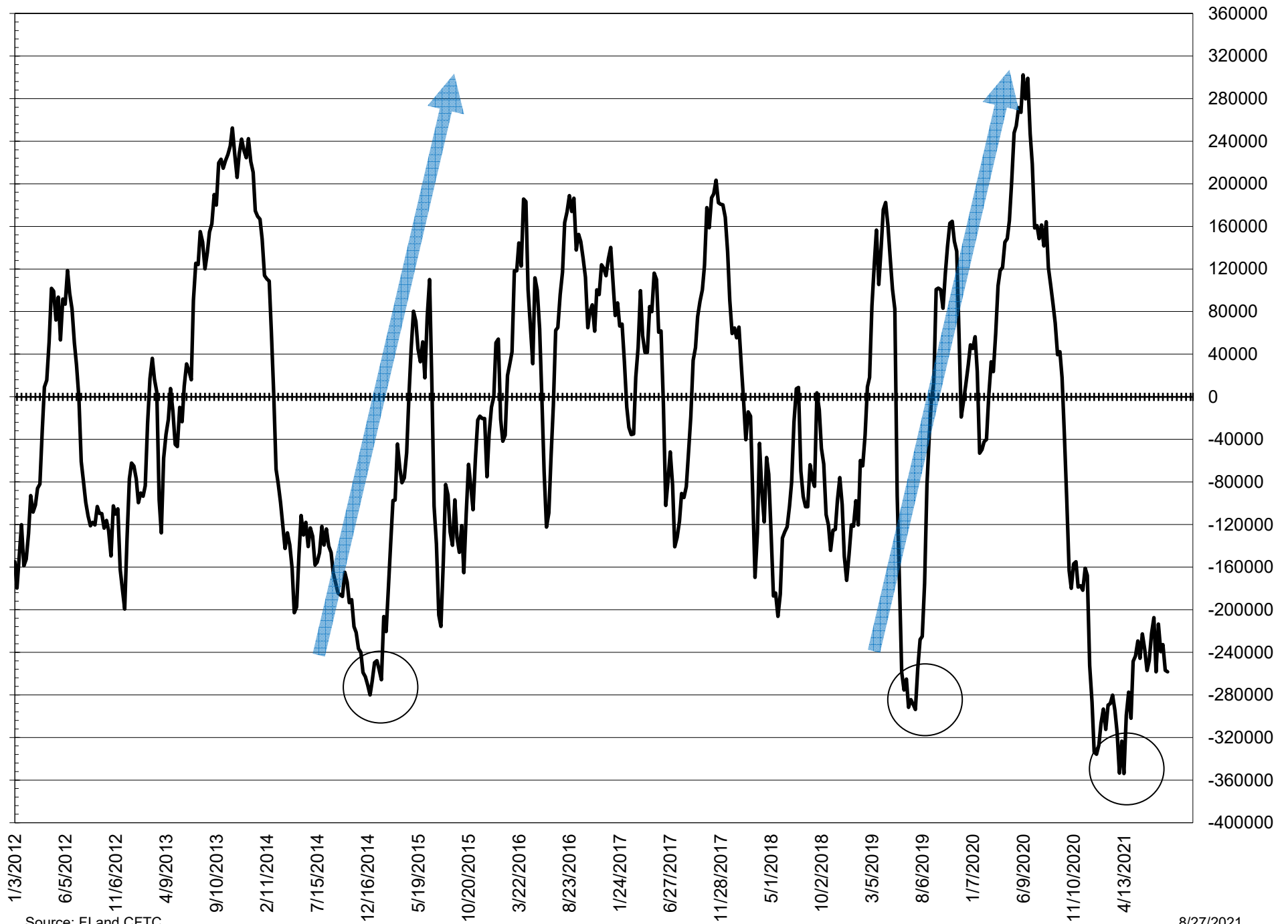
# NET POSITION FUTURES AND OPTIONS OF LARGE SPECULATORS IN SOYBEAN MEAL AND SOYBEAN OIL



# NET POSITION FUTURES AND OPTIONS OF LARGE SPECULATORS IN SOYBEANS AND CORN



# NET POSITION FUTURES AND OPTIONS SPREAD OF LARGE SPECULATORS IN SOYBEANS MINUS CORN



Source: FI and CFTC

8/27/2021

**DISAGGREGATED COMMITMENT OF TRADERS  
FUTURES ONLY NET POSITIONS  
AS OF 08/24/2021  
(IN THOUSAND CONTRACTS)**

	PRODUCER / MERCHANT / PROCESSOR / USER				(INDEX/ETF) SWAP DEALERS				(CTA/CPO/OTHER UNREGISTERED) MANAGED MONEY			
	24-Aug	17-Aug	10-Aug	3-Aug	24-Aug	17-Aug	10-Aug	3-Aug	24-Aug	17-Aug	10-Aug	3-Aug
	WHEAT											
Chicago	(87.5)	(93.1)	(87.2)	(81.2)	62.3	57.0	55.8	53.0	8.3	22.1	16.9	12.4
Kansas City	(85.8)	(86.0)	(85.4)	(81.4)	41.6	42.5	45.5	46.7	46.7	45.6	43.7	37.1
Minneapolis	(32.1)	(31.5)	(28.8)	(27.7)	3.1	3.3	3.2	3.1	15.8	15.0	11.9	10.2
All Wheat	(205.4)	(210.6)	(201.4)	(190.3)	107.0	102.7	104.4	102.8	70.9	82.7	72.6	59.7
CORN	(503.0)	(520.3)	(502.6)	(514.2)	246.3	249.3	252.3	262.3	257.9	269.1	246.5	242.7
OATS	(1.8)	(2.0)	(2.0)	(1.9)	0.1	0.1	0.1	0.1	0.4	0.4	0.3	0.2
SOYBEANS	(172.6)	(186.6)	(189.4)	(184.4)	92.2	86.0	83.0	82.5	78.6	93.7	86.9	73.0
SOY OIL	(176.8)	(175.8)	(172.5)	(167.7)	104.7	104.9	102.9	100.8	67.2	69.4	64.1	65.0
SOY MEAL	(153.0)	(163.3)	(158.9)	(151.9)	85.6	85.5	86.0	86.5	20.9	27.7	25.2	18.2

Managed % of OI				
Chicago W	2%	6%	4%	3%
Corn	18%	19%	17%	16%

	TOTAL OPEN INTEREST				OTHER REPORTABLE				NON REPORTABLE			
	24-Aug	17-Aug	10-Aug	3-Aug	24-Aug	17-Aug	10-Aug	3-Aug	24-Aug	17-Aug	10-Aug	3-Aug
	WHEAT											
Chicago	396,979	390,322	382,959	373,529	26.8	24.7	26.7	28.5	(9.8)	(10.7)	(12.2)	(12.8)
Kansas City	232,626	229,763	230,837	225,807	(4.8)	(3.9)	(3.0)	(0.5)	2.3	1.9	(0.8)	(1.9)
Minneapolis	73,041	77,366	78,501	81,057	3.8	3.2	3.2	3.6	9.3	10.0	10.5	10.9
All Wheat	702,646	697,451	692,297	680,393	25.7	24.0	26.9	31.5	1.8	1.2	(2.4)	(3.8)
CORN	1,443,764	1,435,341	1,424,121	1,471,063	73.1	76.8	75.1	75.4	(74.3)	(74.9)	(71.3)	(66.1)
OATS	4,832	4,660	4,485	4,473	0.4	0.4	0.4	0.4	1.0	1.0	1.3	1.1
SOYBEANS	684,606	665,803	660,007	655,874	23.1	22.7	35.5	42.8	(21.2)	(15.8)	(15.9)	(13.9)
SOY OIL	425,628	436,726	435,486	438,467	(2.1)	(4.9)	(0.7)	(2.2)	7.0	6.3	6.2	4.1
SOY MEAL	364,085	367,632	362,641	358,871	28.9	27.2	27.6	28.9	17.7	22.9	20.1	18.4

SOURCE: CFTC & FI

**DISAGGREGATED COMMITMENT OF TRADERS  
FUTURES & OPTIONS NET POSITIONS  
AS OF 08/24/2021  
(IN THOUSAND CONTRACTS)**

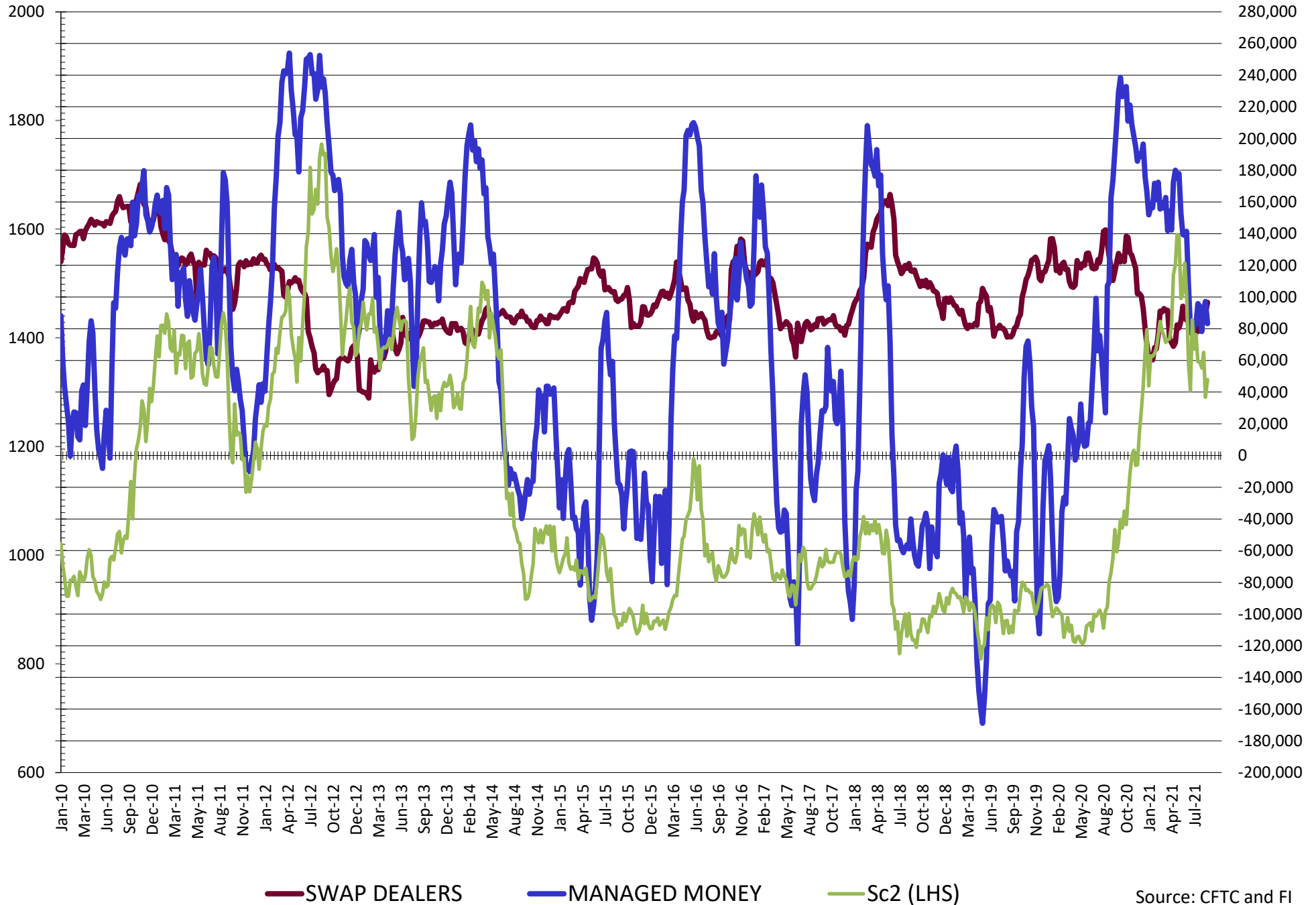
	PRODUCER / MERCHANT / PROCESSOR / USER				(INDEX/ETF) SWAP DEALERS				(CTA/CPO/OTHER UNREGISTERED) MANAGED MONEY			
	24-Aug	17-Aug	10-Aug	3-Aug	24-Aug	17-Aug	10-Aug	3-Aug	24-Aug	17-Aug	10-Aug	3-Aug
	WHEAT											
Chicago	(81.7)	(89.0)	(83.8)	(78.8)	64.4	59.1	57.4	54.2	12.0	24.2	19.1	15.3
Kansas City	(84.8)	(85.8)	(85.8)	(81.8)	41.1	41.4	45.3	46.5	47.4	46.5	44.8	38.2
Minneapolis	(31.7)	(31.4)	(29.0)	(28.0)	3.2	3.1	3.0	3.0	15.9	15.0	11.9	10.2
All Wheat	(198.3)	(206.2)	(198.5)	(188.5)	108.7	103.6	105.7	103.7	75.3	85.8	75.8	63.7
CORN	(486.0)	(502.9)	(486.5)	(497.5)	228.5	227.2	232.0	240.7	271.0	278.9	254.0	246.5
OATS	(1.9)	(2.0)	(2.1)	(1.9)	0.1	0.1	0.1	0.1	0.4	0.4	0.3	0.2
SOYBEANS	(154.5)	(170.2)	(165.8)	(156.8)	96.6	89.7	86.5	86.6	83.2	97.2	91.6	78.3
SOY OIL	(170.3)	(172.0)	(165.3)	(162.3)	103.1	103.7	101.1	98.9	67.0	69.1	63.5	64.7
SOY MEAL	(146.6)	(158.8)	(153.5)	(146.4)	86.6	86.0	86.8	87.8	20.7	27.7	25.2	17.9

	TOTAL OPEN INTEREST				OTHER REPORTABLE				NON REPORTABLE			
	24-Aug	17-Aug	10-Aug	3-Aug	24-Aug	17-Aug	10-Aug	3-Aug	24-Aug	17-Aug	10-Aug	3-Aug
	WHEAT											
Chicago	498,801	494,409	476,360	464,439	14.8	16.3	19.4	22.0	(9.4)	(10.6)	(12.2)	(12.8)
Kansas City	259,263	256,929	253,628	247,412	(6.2)	(4.2)	(3.9)	(1.6)	2.5	2.0	(0.3)	(1.3)
Minneapolis	80,280	84,752	85,925	88,863	2.9	2.7	2.9	3.1	9.7	10.5	11.1	11.7
All Wheat	838,344	836,090	815,913	800,714	11.5	14.8	18.3	23.5	2.8	2.0	(1.4)	(2.4)
CORN	1,985,043	1,989,268	1,973,657	1,992,118	67.9	73.7	73.6	77.2	(81.4)	(77.0)	(77.0)	(77.0)
OATS	5,082	4,902	4,699	4,687	0.4	0.5	0.4	0.5	0.9	1.0	1.2	1.1
SOYBEANS	899,684	878,154	873,847	867,297	(2.7)	(1.5)	3.3	5.9	(22.7)	(15.2)	(15.6)	(14.0)
SOY OIL	495,595	502,103	501,924	504,327	(7.1)	(7.6)	(5.7)	(5.4)	7.3	6.9	6.3	4.1
SOY MEAL	404,589	407,639	402,359	399,064	17.4	18.1	17.4	18.4	21.8	27.0	24.1	22.3

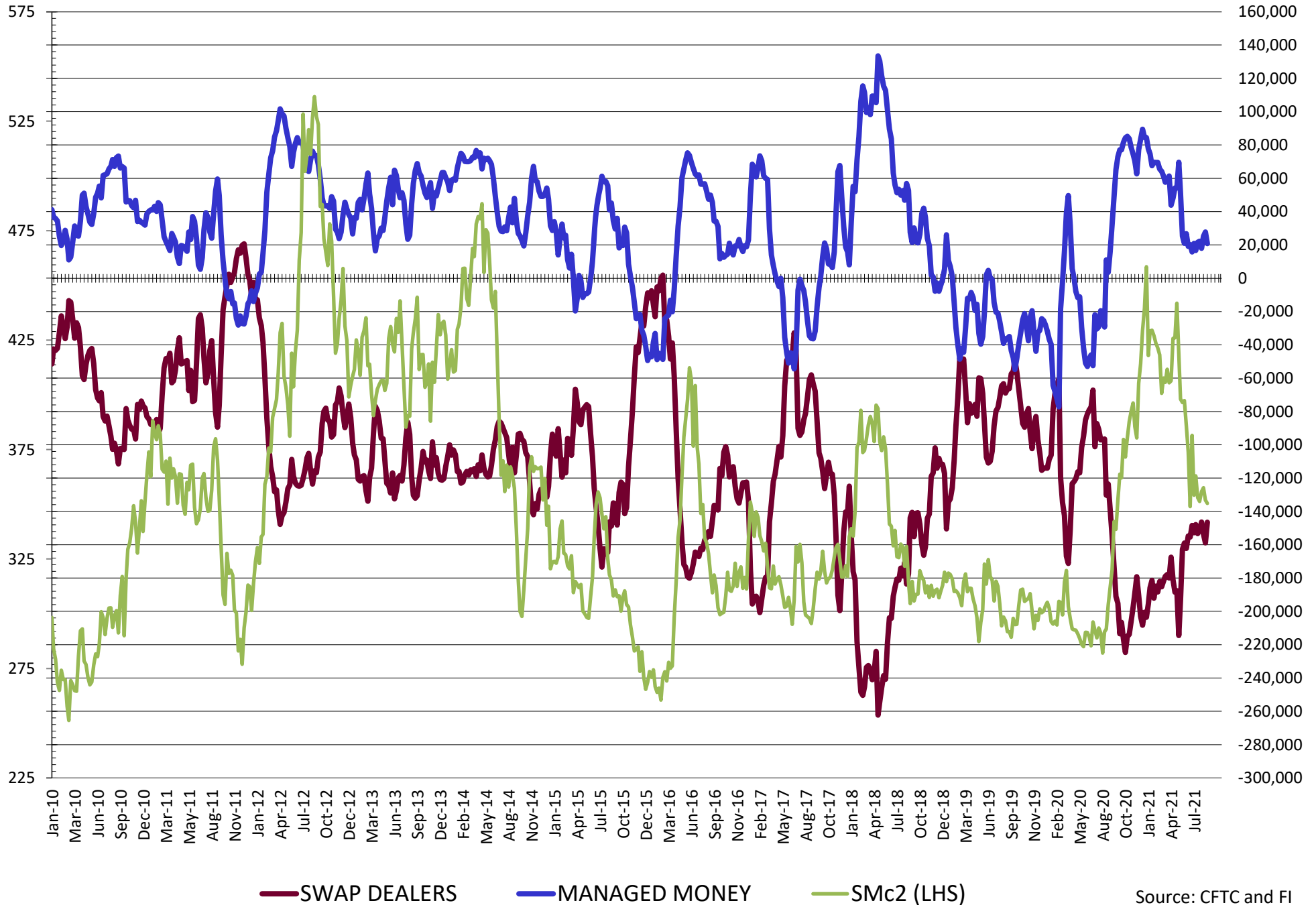
SOURCE: CFTC & FI



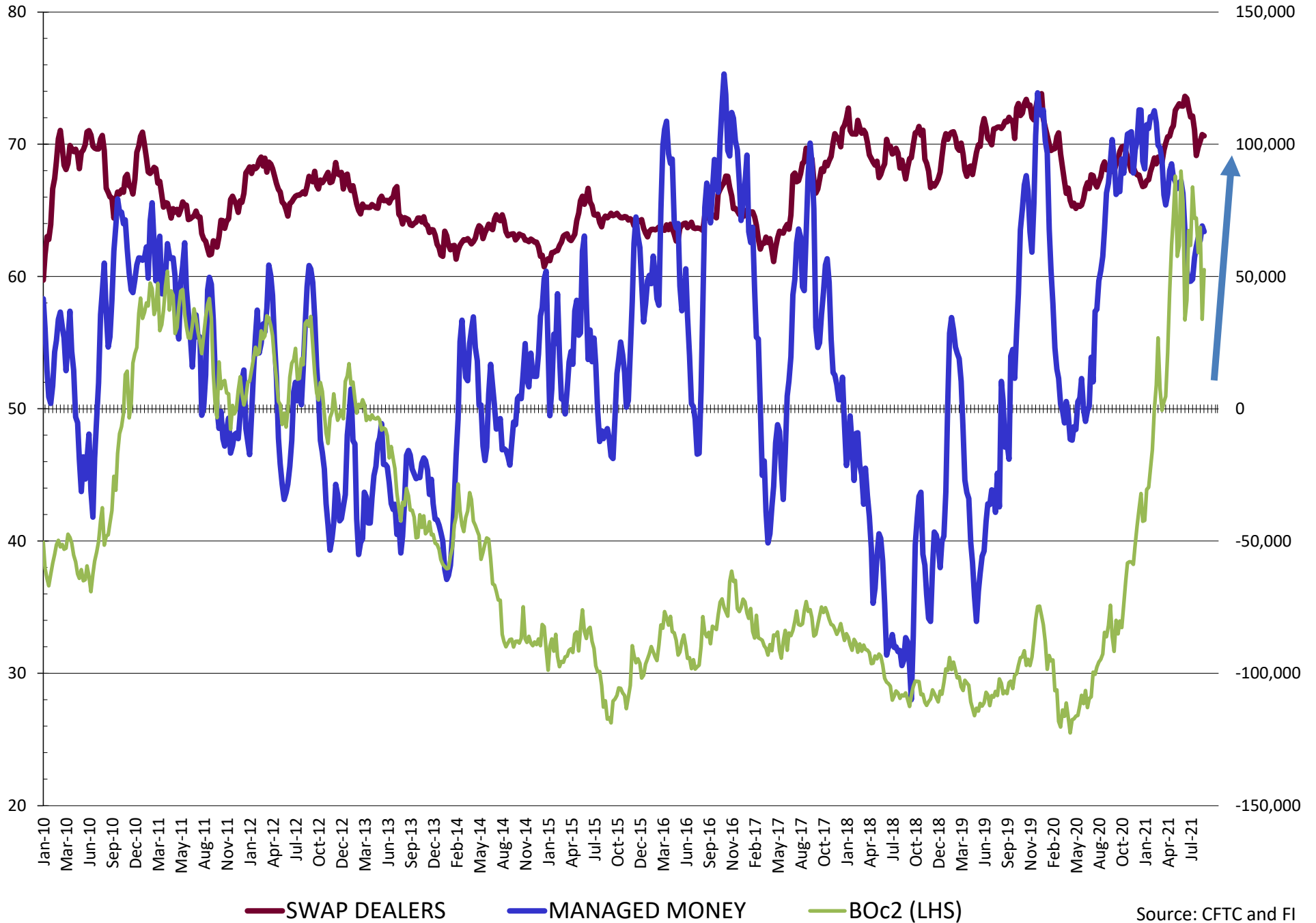
# NET POSITION FUTURES AND OPTIONS OF SWAP AND MANAGED FUNDS IN SOYBEANS



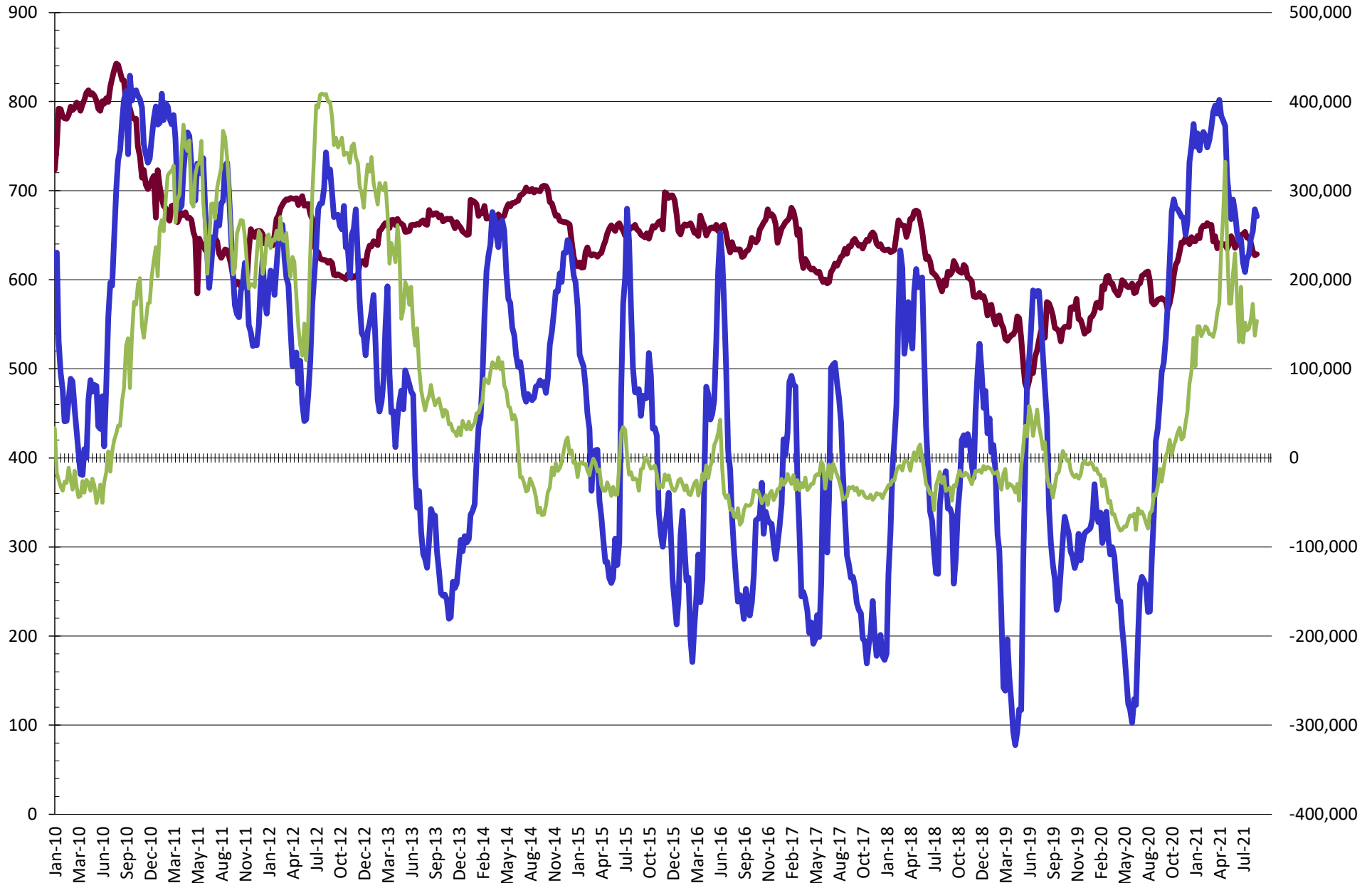
# NET POSITION FUTURES AND OPTIONS OF SWAP AND MANAGED FUNDS IN SOYBEAN MEAL



# NET POSITION FUTURES AND OPTIONS OF SWAP AND MANAGED FUNDS IN SOYBEAN OIL

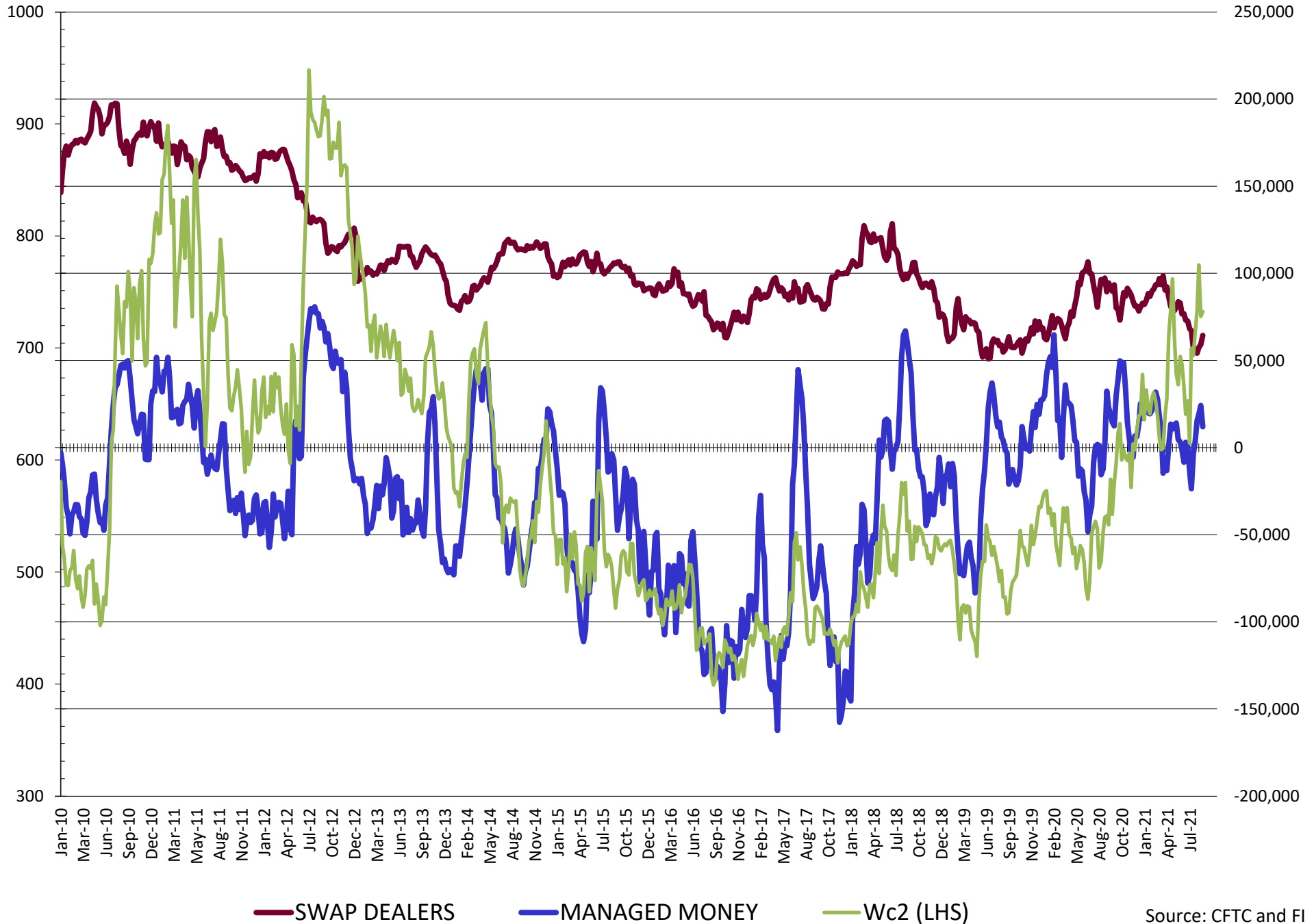


# NET POSITION FUTURES AND OPTIONS OF SWAP AND MANAGED FUNDS IN CORN

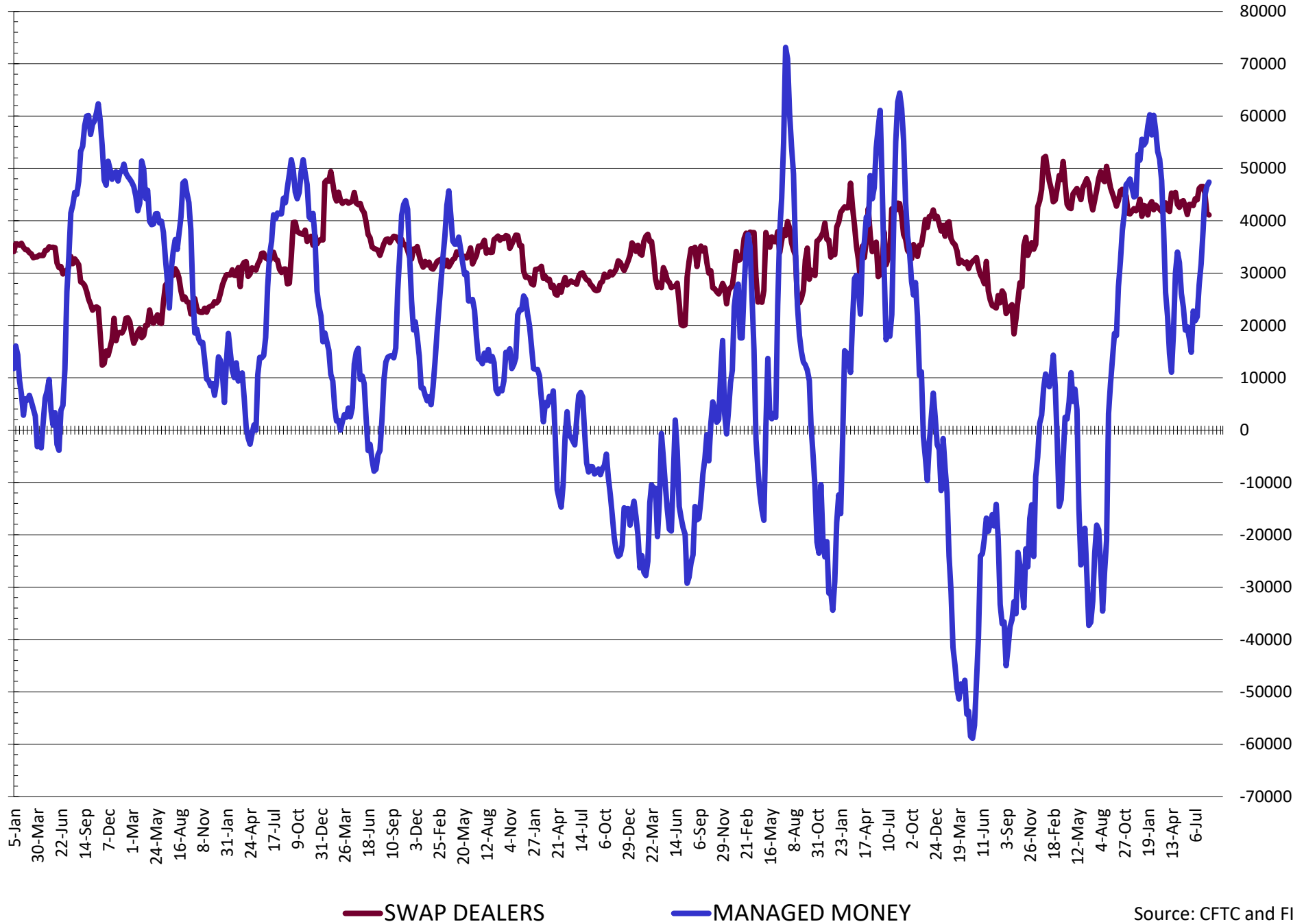


— SWAP DEALERS     
 — MANAGED MONEY     
 — Cc2 (LHS)

# NET POSITION FUTURES AND OPTIONS OF SWAP AND MANAGED FUNDS IN CHICAGO WHEAT

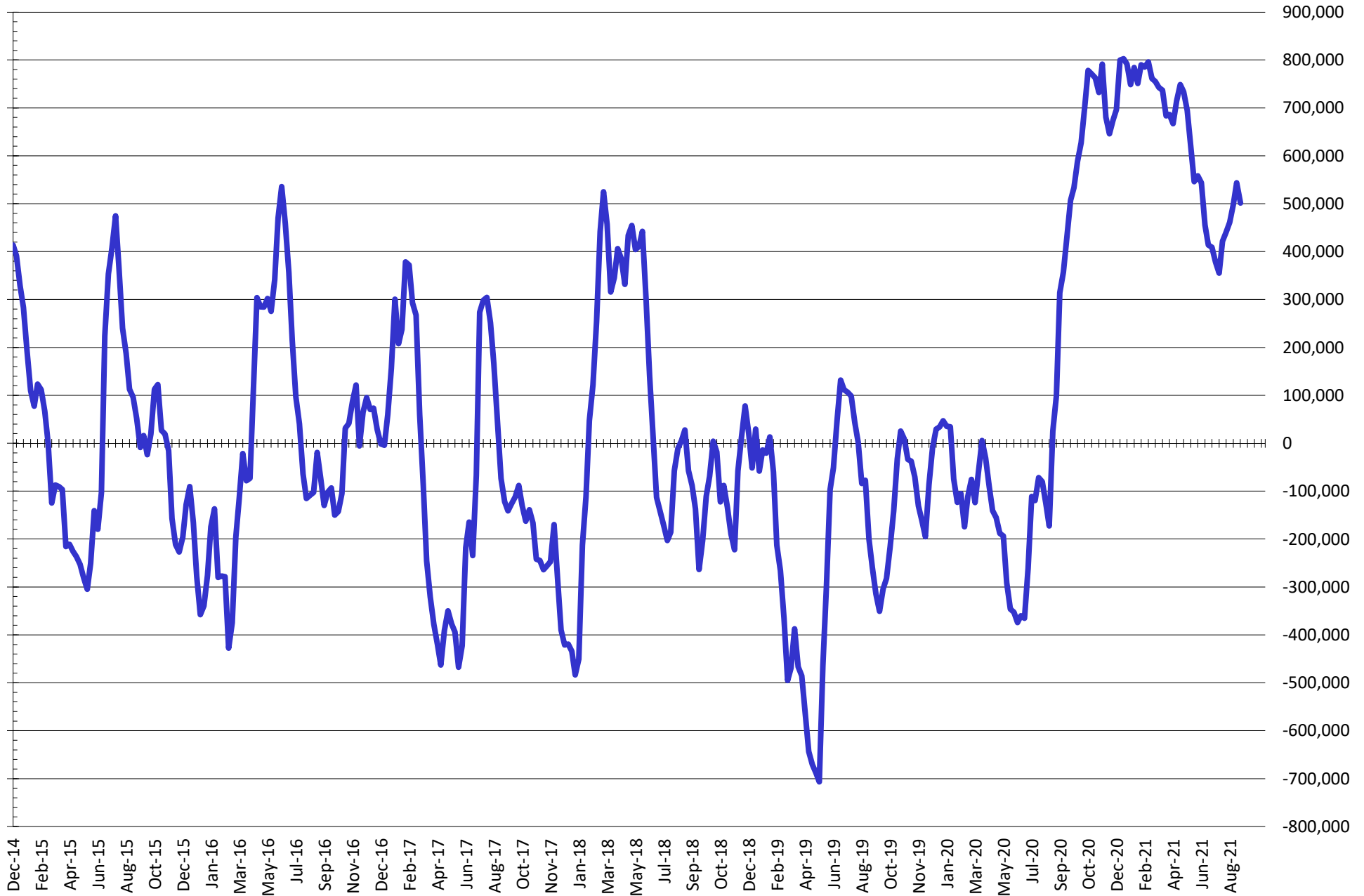


# NET POSITION FUTURES AND OPTIONS OF SWAP AND MANAGED FUNDS IN KANSAS WHEAT



Source: CFTC and FI  
8/27/2021

# NET POSITION FUTURES AND OPTIONS OF SWAP AND MANAGED FUNDS IN COMBINED SRW, HRW, CORN, SOYBEANS, SOYMEAL AND SOYOIL



— Net Managed Money

Source: CFTC and FI  
8/27/2021

**COMMITMENT OF TRADERS**  
**FUTURES & OPTIONS NET POSITIONS (INDEX BROKEN OUT)**  
**AS OF 08/24/2021**  
(IN THOUSAND CONTRACTS)

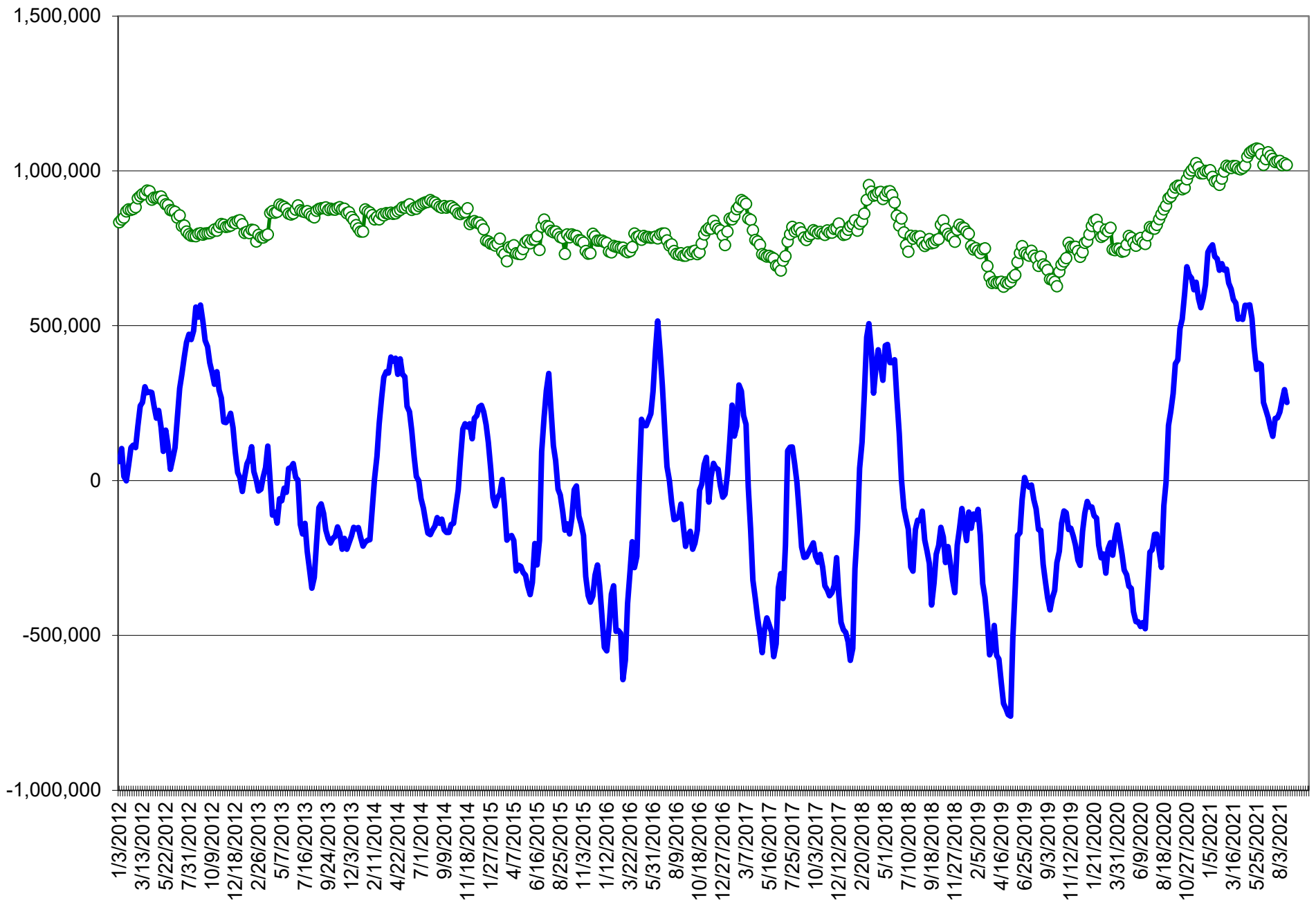
	COMMERCIAL				(FUND) NON COMMERCIAL				(SPEC) NON-REPORTABLE			
	24-Aug	17-Aug	10-Aug	3-Aug	24-Aug	17-Aug	10-Aug	3-Aug	24-Aug	17-Aug	10-Aug	3-Aug
	WHEAT											
Chicago	(111.5)	(123.2)	(116.2)	(111.2)	(19.2)	(6.3)	(10.9)	(15.3)	(9.4)	(10.6)	(12.2)	(12.8)
Kansas City	(90.9)	(91.7)	(89.2)	(85.9)	21.0	21.8	21.9	19.6	2.5	2.0	(0.3)	(1.3)
Minneapolis	-	-	-	-	-	-	-	-	-	-	-	-
All Wheat	(202.5)	(214.8)	(205.4)	(197.0)	1.8	15.5	11.0	4.2	(6.9)	(8.6)	(12.5)	(14.1)
CORN	(518.3)	(536.4)	(521.0)	(530.6)	190.3	199.0	173.7	166.8	(81.4)	(77.0)	(73.2)	(66.8)
OATS	-	-	-	-	-	-	-	-	-	-	-	-
SOYBEANS	(179.6)	(196.1)	(189.3)	(178.6)	22.3	32.0	33.1	20.1	(22.7)	(15.2)	(15.6)	(14.0)
SOY OIL	(157.9)	(158.5)	(152.7)	(150.2)	32.3	33.1	29.5	28.8	7.3	6.9	6.3	4.1
SOY MEAL	(131.5)	(144.6)	(137.0)	(128.9)	5.5	13.6	10.1	1.7	21.8	27.0	24.1	22.3

	TOTAL OPEN INTEREST				(INDEX) COMMERCIAL INDEX TRADERS				(INDEX) % NET OF TOTAL OPEN INTEREST			
	24-Aug	17-Aug	10-Aug	3-Aug	24-Aug	17-Aug	10-Aug	3-Aug	24-Aug	17-Aug	10-Aug	3-Aug
	WHEAT											
Chicago	498,801	494,409	476,360	464,439	140.2	140.1	139.3	139.3	28.1%	28.3%	29.2%	30.0%
Kansas City	259,263	256,929	253,628	247,412	67.4	67.8	67.7	67.6	26.0%	26.4%	26.7%	27.3%
Minneapolis	-	-	-	-	-	-	-	-	-	-	-	-
All Wheat	758,064	751,338	729,988	711,851	207.6	207.9	206.9	206.9	27.4%	27.7%	28.3%	29.1%
CORN	1,985,043	1,989,268	1,973,657	1,992,118	409.4	414.3	420.5	430.6	20.6%	20.8%	21.3%	21.6%
OATS	-	-	-	-	-	-	-	-	-	-	-	-
SOYBEANS	899,684	878,154	873,847	867,297	180.0	179.3	171.8	172.6	20.0%	20.4%	19.7%	19.9%
SOY OIL	495,595	502,103	501,924	504,327	118.3	118.5	116.9	117.3	23.9%	23.6%	23.3%	23.3%
SOY MEAL	404,589	407,639	402,359	399,064	104.2	104.0	102.7	104.9	25.8%	25.5%	25.5%	26.3%

SOURCE: CFTC & FI



# NET POSITION FUTURES AND OPTIONS OF SPECULATORS AND INDEX FUNDS IN COMBINED SRW, HRW, CORN, SOYBEANS, SOYMEAL AND SOYOIL



Source: CFTC and FI

○ Net Index     
 — Net Speculator

## Traditional Daily Estimate of Funds 8/24/21

	(Neg)-"Short"	Pos-"Long"			
Actual less Est.	9.2	4.2	4.2	(1.2)	9.4
	<b>Corn</b>	<b>Bean</b>	<b>Chi. Wheat</b>	<b>Meal</b>	<b>Oil</b>
<b>Actual</b>	331.0	101.6	35.0	49.7	65.0
25-Aug	5.0	1.0	(3.0)	(1.0)	3.0
26-Aug	0.0	(3.0)	7.0	2.0	(1.0)
27-Aug	3.0	(3.0)	(3.0)	(2.0)	2.0
30-Aug					
31-Aug					
<b>FI Est. of Futures Only 8/24/21</b>	<b>339.0</b>	<b>96.6</b>	<b>36.0</b>	<b>48.7</b>	<b>69.0</b>
<b>FI Est. Futures &amp; Options</b>	<b>346.9</b>	<b>75.5</b>	<b>27.7</b>	<b>37.1</b>	<b>63.8</b>
Futures only record long "Traditional Funds"	547.7 1/26/2021	280.9 11/10/2020	86.5 8/7/2018	167.5 5/1/2018	160.2 11/1/2016
Futures only record short	(235.0) 6/9/2020	(118.3) 4/30/2019	(130.0) 4/25/2017	(49.5) 3/1/2016	(69.8) 9/18/2018
Futures and options record net long	557.6 1/12/2021	270.9 10/6/2020	64.8 8/7/2012	132.1 5/1/2018	159.2 1/1/2016
Futures and options record net short	(270.6) 4/26/2019	(132.0) 4/30/2019	(143.3) 4/25/2017	(64.1) 3/1/2016	(77.8) 9/18/2018

## Managed Money Daily Estimate of Funds 8/24/21

	Corn	Bean	Chi. Wheat	Meal	Oil
Latest CFTC Fut. Only	257.9	78.6	8.3	20.9	67.2
Latest CFTC F&O	271.0	83.2	12.0	20.7	67.0
FI Est. Managed Fut. Only	266	74	9	20	71
FI Est. Managed Money F&O	279	78	13	20	71

## Index Funds Latest Positions (as of last Tuesday)

Index Futures & Options	409.4	180.0	140.2	NA	118.3
Change From Previous Week	(5.0)	0.6	0.1	NA	(0.2)

Source: Reuters, CFTC & FI (FI est. are noted with latest date)

# Disclaimer

TO CLIENTS/PROSPECTS OF FUTURES INTERNATIONAL, SEE RISK DISCLOSURE BELOW:

THIS COMMUNICATION IS CONVEYED AS A SOLICITATION FOR ENTERING INTO A DERIVATIVES TRANSACTION.

Any trading recommendations and market or other information to Customer by Futures International (FI), although based upon information obtained from sources believed by FI to be reliable may not be accurate and may be changed without notice to customer. FI makes no guarantee as to the accuracy or completeness of any of the information or recommendations furnished to Customer. Customer understands that FI, its managers, employees and/or affiliates may have a position in commodity futures, options or other derivatives which may not be consistent with the recommendations furnished by FI to Customer.

The risk of trading futures and options and other derivatives involves a substantial risk of loss and is not suitable for all persons. In purchasing an option, the risk is limited to the premium paid, and all commissions and fees involved with the trade. When an option is shorted or written, the writer of the option has unlimited risk with respect to the option written. The use of options strategies such as a straddles and strangles involve multiple option positions and may substantially increase the amount of commissions and fees paid to execute the strategy. Option prices do not necessarily move in tandem with cash or futures prices. Each person must consider whether a particular trade, combination of trades or strategy is suitable for that person's financial means and objectives.

This material may include discussions of seasonal patterns, however, futures prices have already factored in the seasonal aspects of supply and demand, and seasonal patterns are no indication of future market trends. Finally, past performance is not indicative of future results.

This communication may contain links to third party websites which are not under the control of FI and FI is not responsible for their content. Products and services are offered only in jurisdictions where solicitation and sale are lawful, and in accordance with applicable laws and regulations in each such jurisdiction.