

CFTC COMMITMENT OF TRADERS REPORT

As of 8/17/2021

TRADITIONAL FUNDS net position changes

Wed to Tue, in 000 contracts

	Corn	Bean	Meal	Oil	Chi. Wheat	KC Wheat	Min Wheat
Futures Only	24.3	(6.0)	2.1	1.2	3.2	0.9	3.1
Futures & Options Combined	25.0	0.8	3.2	3.6	2.0	1.5	3.0

TRADITIONAL COMMERCIAL net position changes

	Corn	Bean	Meal	Oil	Chi. Wheat	KC Wheat	Min Wheat
Futures Only	(20.7)	5.9	(4.9)	(1.3)	(4.6)	(3.6)	(2.6)
Futures & Options Combined	(21.2)	(1.2)	(6.0)	(4.1)	(3.6)	(3.9)	(2.3)

MANAGED MONEY net position changes

	Corn	Bean	Meal	Oil	Chi. Wheat	KC Wheat	Min Wheat
Futures Only	22.6	6.8	2.5	5.4	5.2	1.9	3.1
Futures & Options Combined	24.9	5.5	2.5	5.6	5.1	1.8	3.1

SWAP DEALERS net position changes

	Corn	Bean	Meal	Oil	Chi. Wheat	KC Wheat	Min Wheat
Futures Only	(3.0)	3.1	(0.5)	2.0	1.2	(3.0)	0.1
Futures & Options Combined	(4.8)	3.2	(0.7)	2.5	1.7	(3.9)	0.1

PRODUCERS/END USERS net position changes

	Corn	Bean	Meal	Oil	Chi. Wheat	KC Wheat	Min Wheat
Futures Only	(17.7)	2.8	(4.4)	(3.3)	(5.8)	(0.6)	(2.7)
Futures & Options Combined	(16.4)	(4.4)	(5.3)	(6.7)	(5.2)	(0.0)	(2.4)

INDEX net position changes

	Corn	Bean	Meal	Oil	Chi. Wheat	KC Wheat	Min Wheat
Futures & Options Combined	(6.2)	7.6	1.3	1.7	0.8	0.1	NA

SUPPLEMENTAL NON-COMMERCIAL net position changes

	Corn	Bean	Meal	Oil	Chi. Wheat	KC Wheat	Min Wheat
Futures & Options Combined	25.4	(1.2)	3.4	3.6	4.6	(0.1)	NA

OPEN INTEREST net position changes

Wed to Tue, in 000 contracts

	Corn	Bean	Meal	Oil	Chi. Wheat	KC Wheat	Min Wheat
Futures Only	11.2	5.8	5.0	1.2	7.4	(1.1)	(1.1)
Futures & Options Combined	15.6	4.3	5.3	0.2	18.0	3.3	(1.2)

Source: CFTC and FI

Wed to Tue, in 000 contracts

8/22/2021

**COMMITMENT OF TRADERS
FUTURES ONLY NET POSITIONS
AS OF 08/17/2021
(IN THOUSAND CONTRACTS)**

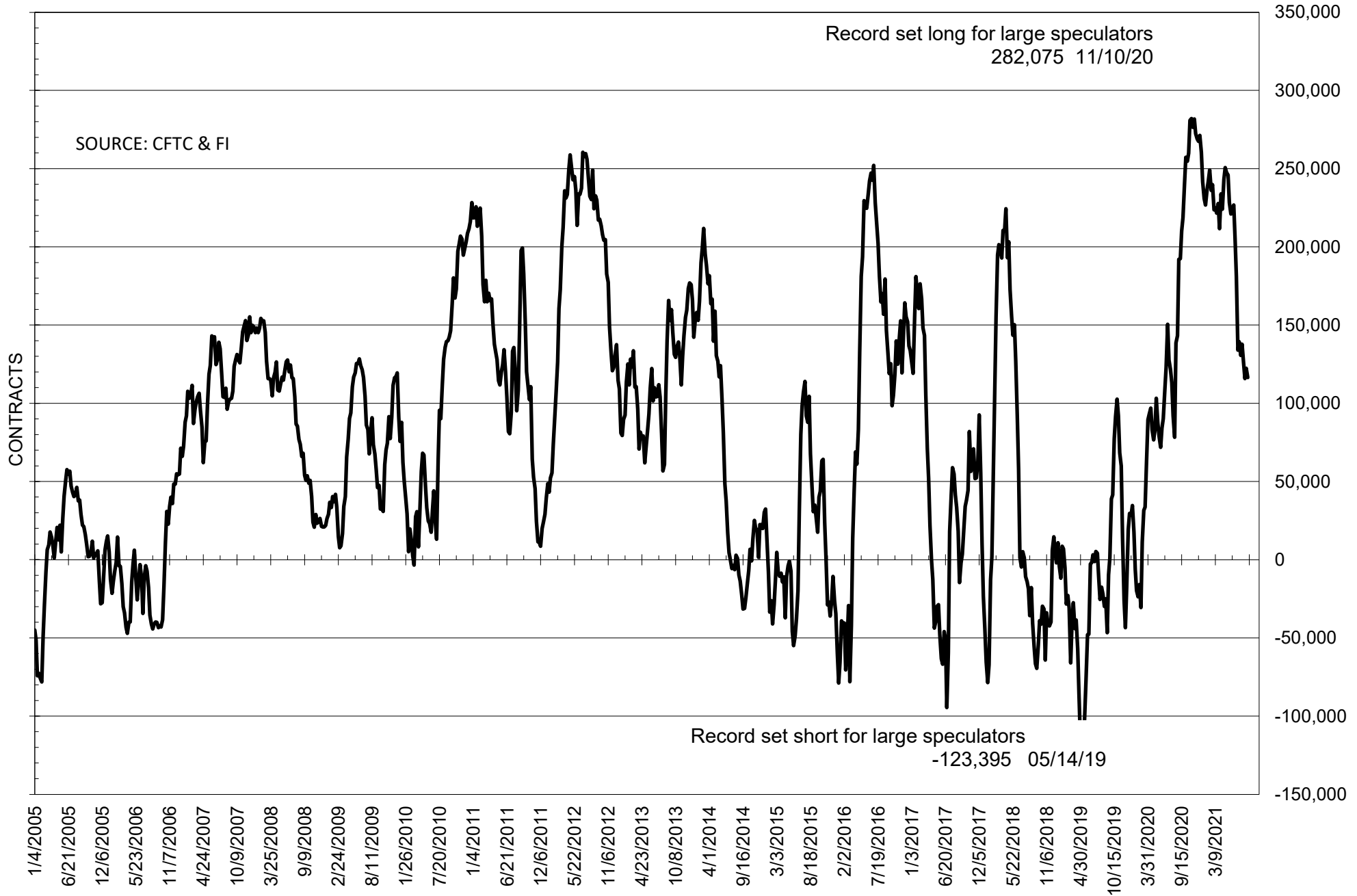
	COMMERCIAL				(FUND) NON COMMERCIAL				(SPEC) NON-REPORTABLE			
	17-Aug	10-Aug	3-Aug	27-Jul	17-Aug	10-Aug	3-Aug	27-Jul	17-Aug	10-Aug	3-Aug	27-Jul
	WHEAT											
Chicago	-36.1	-31.5	-28.2	-17.0	46.8	43.6	41.0	30.2	-10.7	-12.2	-12.8	-13.2
Kansas City	-43.5	-39.9	-34.7	-28.8	41.6	40.7	36.6	30.4	1.9	-0.8	-1.9	-1.6
Minneapolis	-28.2	-25.6	-24.6	-23.1	18.2	15.1	13.7	10.5	10.0	10.5	10.9	12.6
All Wheat	-107.9	-97.0	-87.5	-68.8	106.7	99.5	91.3	71.1	1.2	-2.4	-3.8	-2.2
CORN	-271.0	-250.3	-251.9	-246.3	345.8	321.6	318.0	306.7	-74.9	-71.3	-66.1	-60.4
OATS	-1.9	-1.9	-1.8	-2.1	0.8	0.7	0.6	0.6	1.0	1.3	1.1	1.5
SOYBEANS	-100.6	-106.5	-101.9	-112.3	116.4	122.4	115.8	125.7	-15.8	-15.9	-13.9	-13.3
SOY OIL	-70.9	-69.6	-66.9	-67.3	64.6	63.4	62.8	61.9	6.3	6.2	4.1	5.4
SOY MEAL	-77.8	-72.9	-65.4	-72.0	54.9	52.9	47.0	51.5	22.9	20.1	18.4	20.5

Oats positions thin to be reported

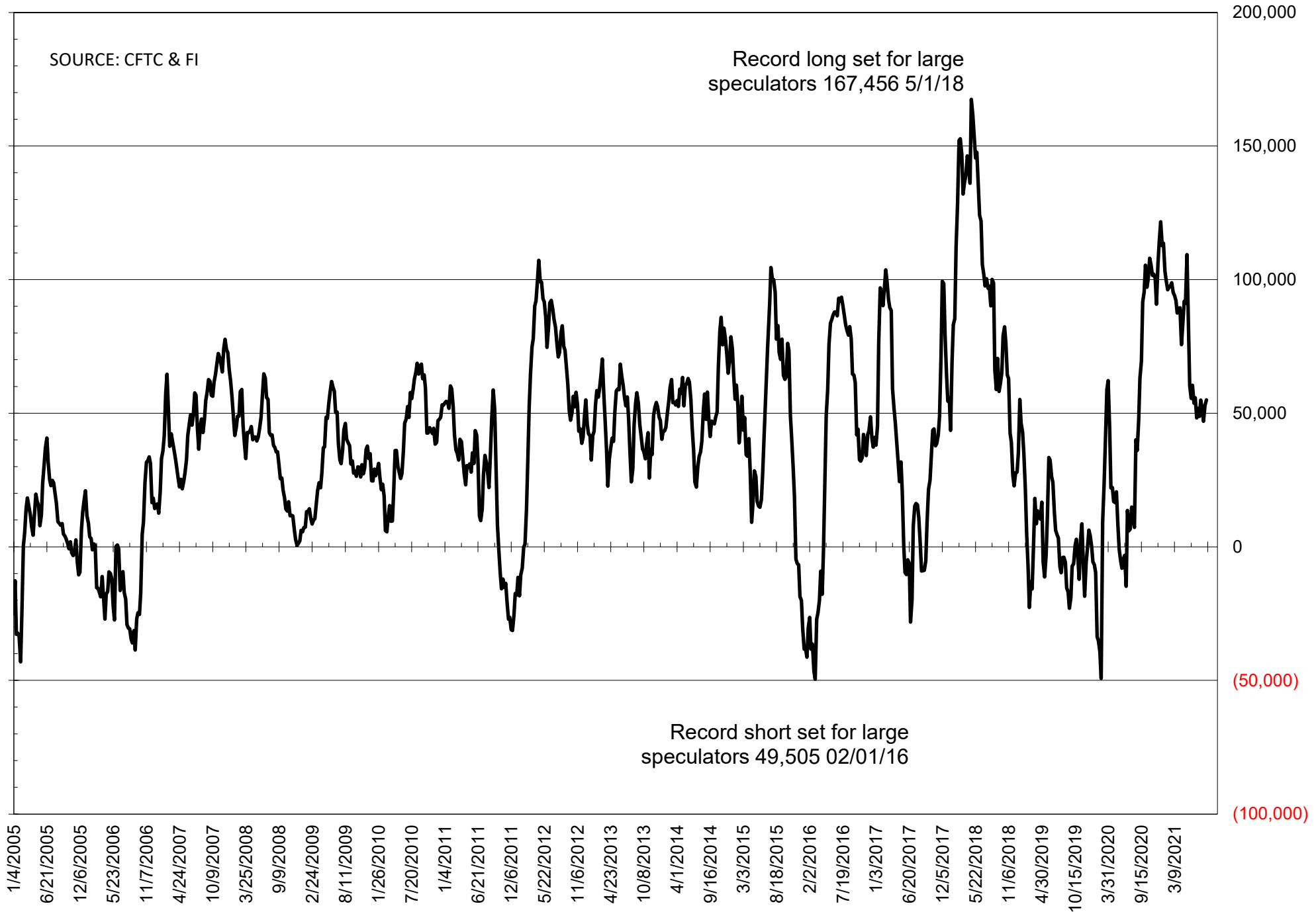
	TOTAL OPEN INTEREST				NEARBY FUTURES PRICE					17-Aug-21 LAST REPORTED % HELD BY TRADERS			
	17-Aug	10-Aug	3-Aug	27-Jul	U Latest	U 17-Aug	U 10-Aug	U 3-Aug	Q/U 27-Jul	LARGE FUND		SMALL	
										LONG	SHORT	LONG	SHORT
WHEAT													
Chicago	390322	382959	373529	348122	714.25	734.50	727.00	724.50	674.50	0%	23%	0%	10%
Kansas City	229763	230837	225807	213937	702.00	716.75	714.25	707.50	641.50	0%	18%	0%	9%
Minneapolis	77366	78501	81057	79620	918.50	921.00	916.50	919.75	878.25	0%	3%	0%	17%
CORN	1435341	1424121	1471063	1466666	538.75	558.25	549.25	550.50	548.75	0%	6%	0%	14%
OATS	4660	4485	4473	4667	495.00	507.50	467.25	445.00	465.75	0%	7%	0%	27%
SOYBEANS	665803	660007	655874	667567	1293.75	1369.00	1248.25	1328.75	1418.25	27%	10%	7%	9%
SOY OIL	436726	435486	438467	441669	57.49	62.54	61.19	62.45	66.26	0%	9%	0%	6%
SOY MEAL	367632	362641	358871	359223	353.30	360.10	357.50	347.50	358.80	0%	8%	0%	7%

SOURCE: CFTC & FI

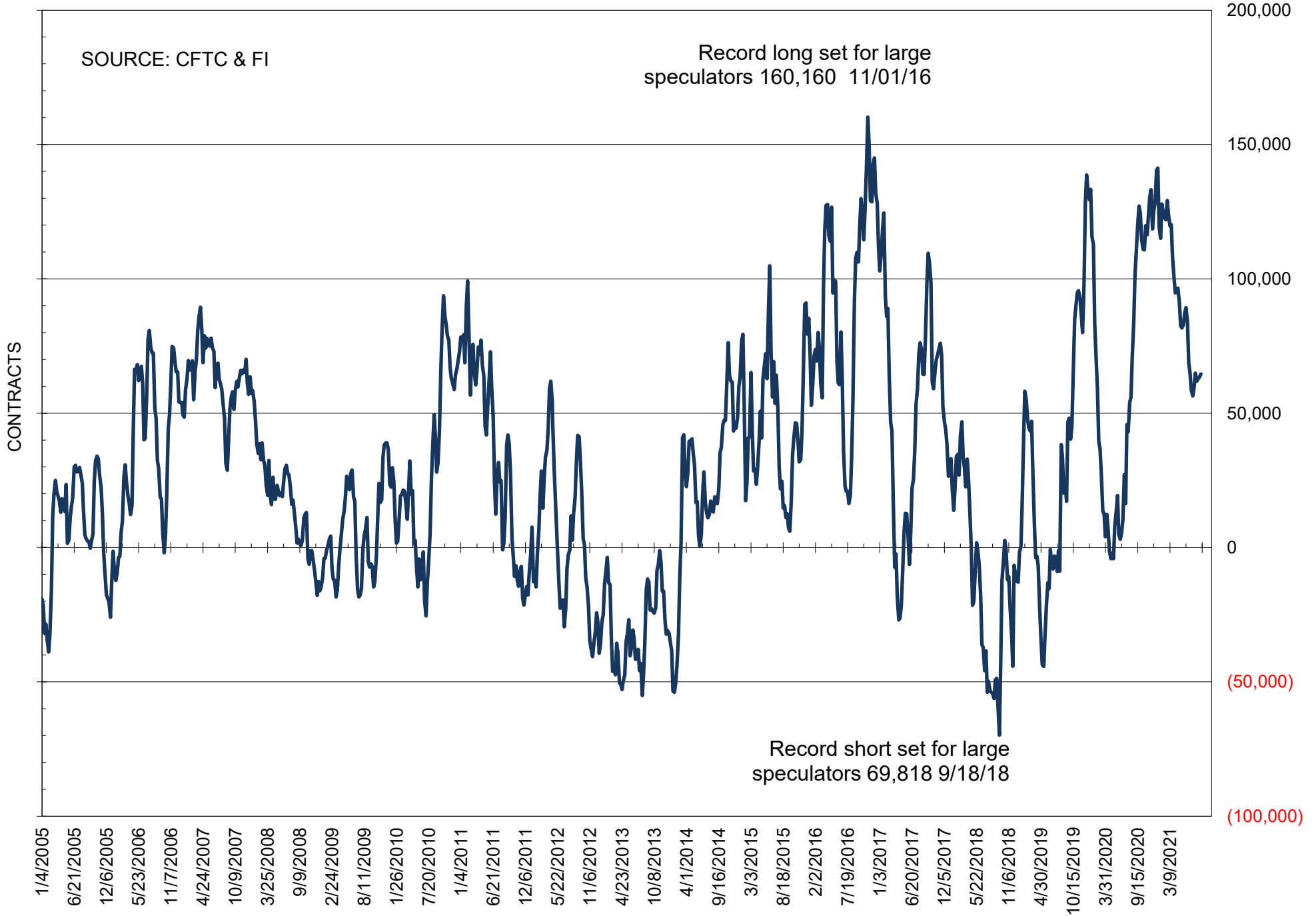
NET POSITION OF FUTURES ONLY LARGE SPECS IN SOYBEANS



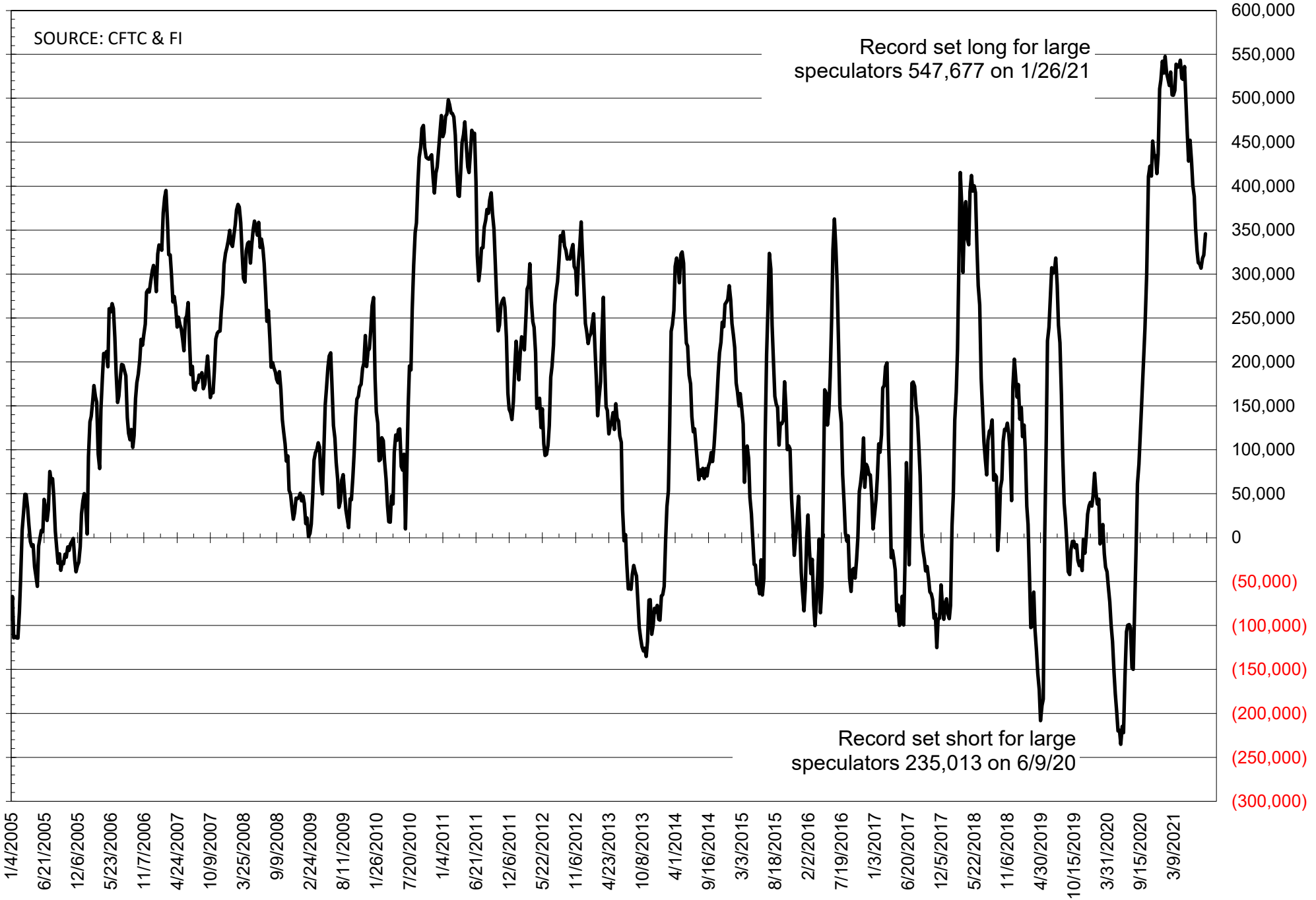
NET POSITION OF FUTURES ONLY LARGE SPECS IN SOYMEAL



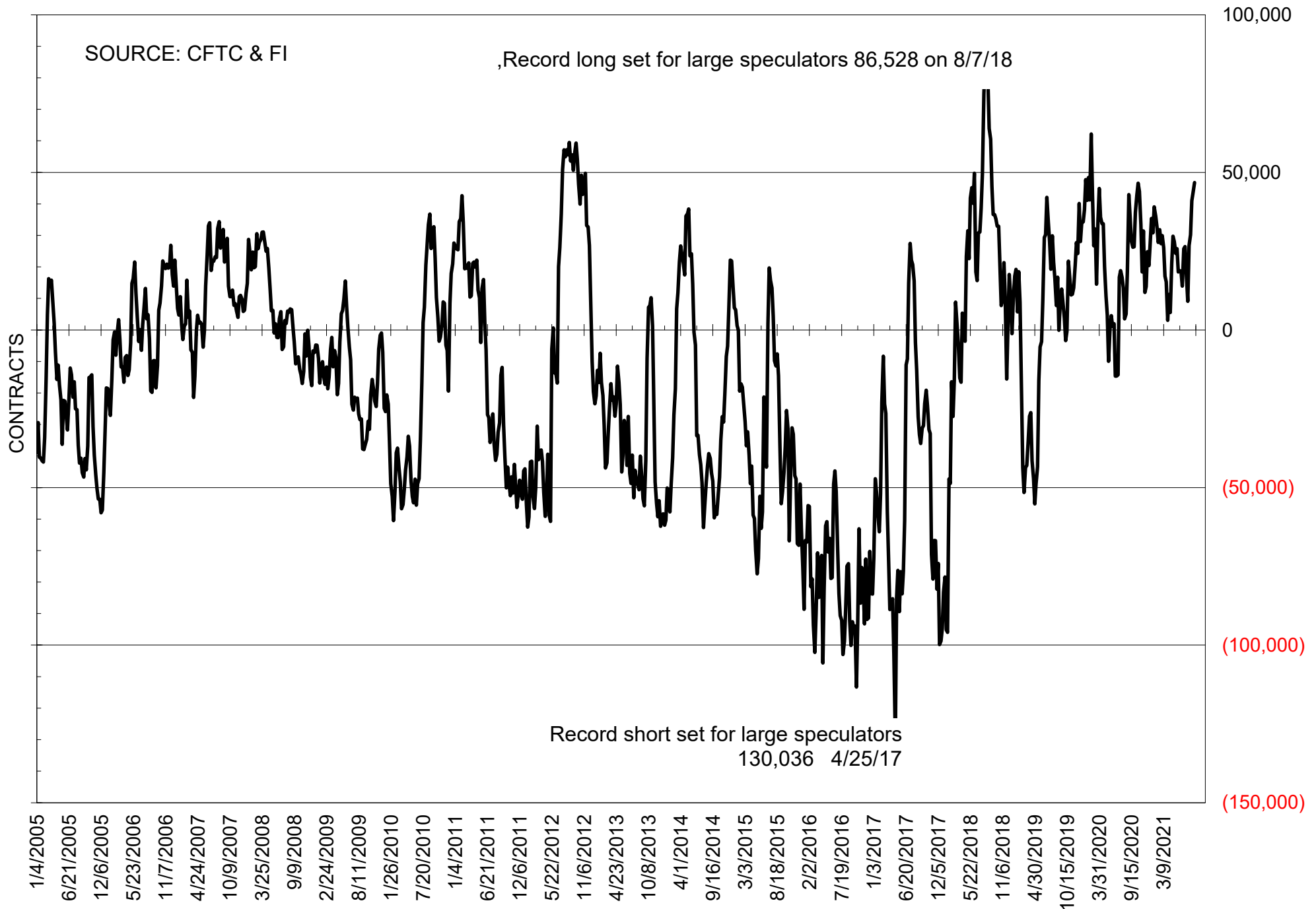
NET POSITION OF FUTURES ONLY LARGE SPECS IN SOYOIL



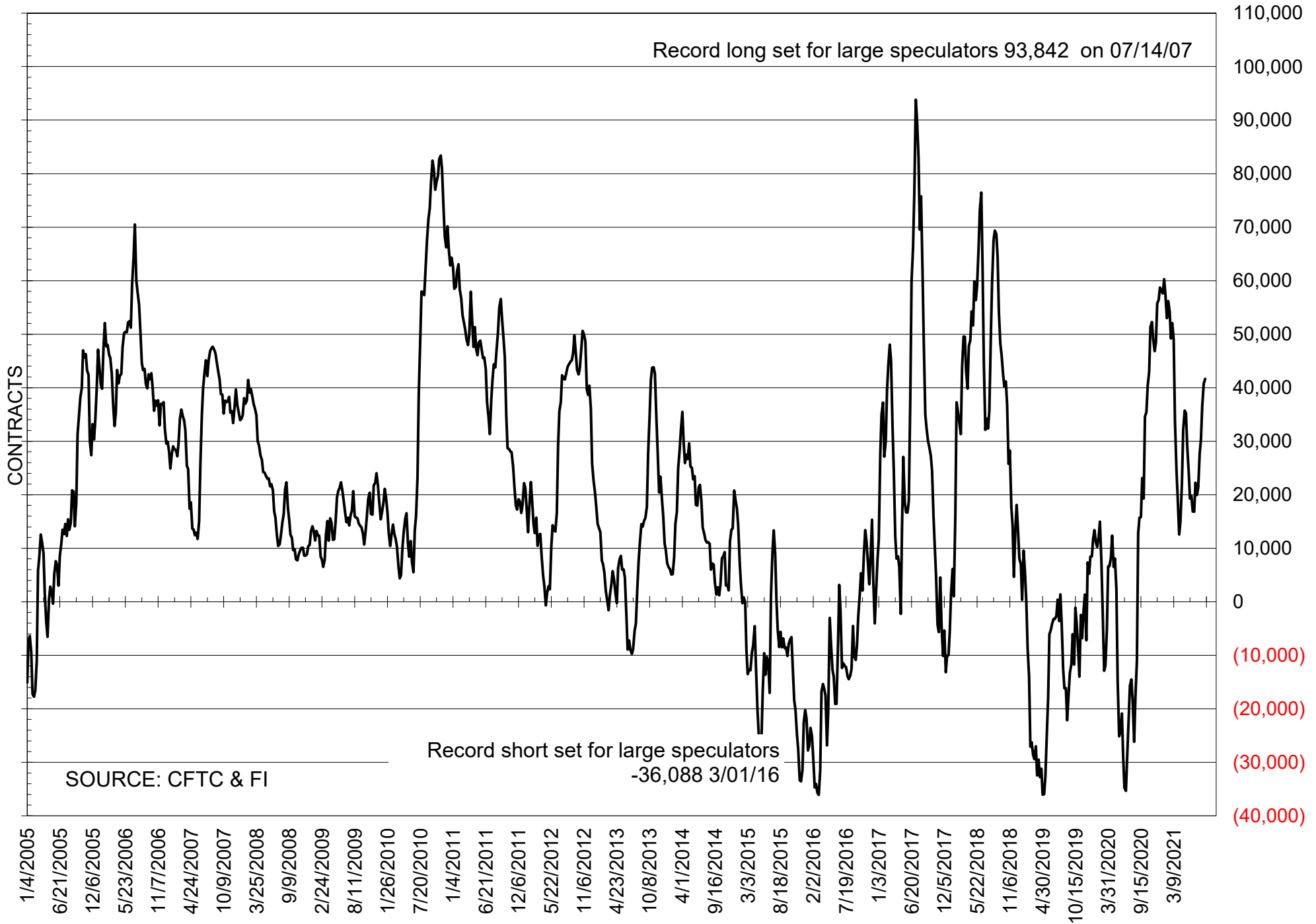
NET POSITION OF LARGE SPECULATORS IN CORN



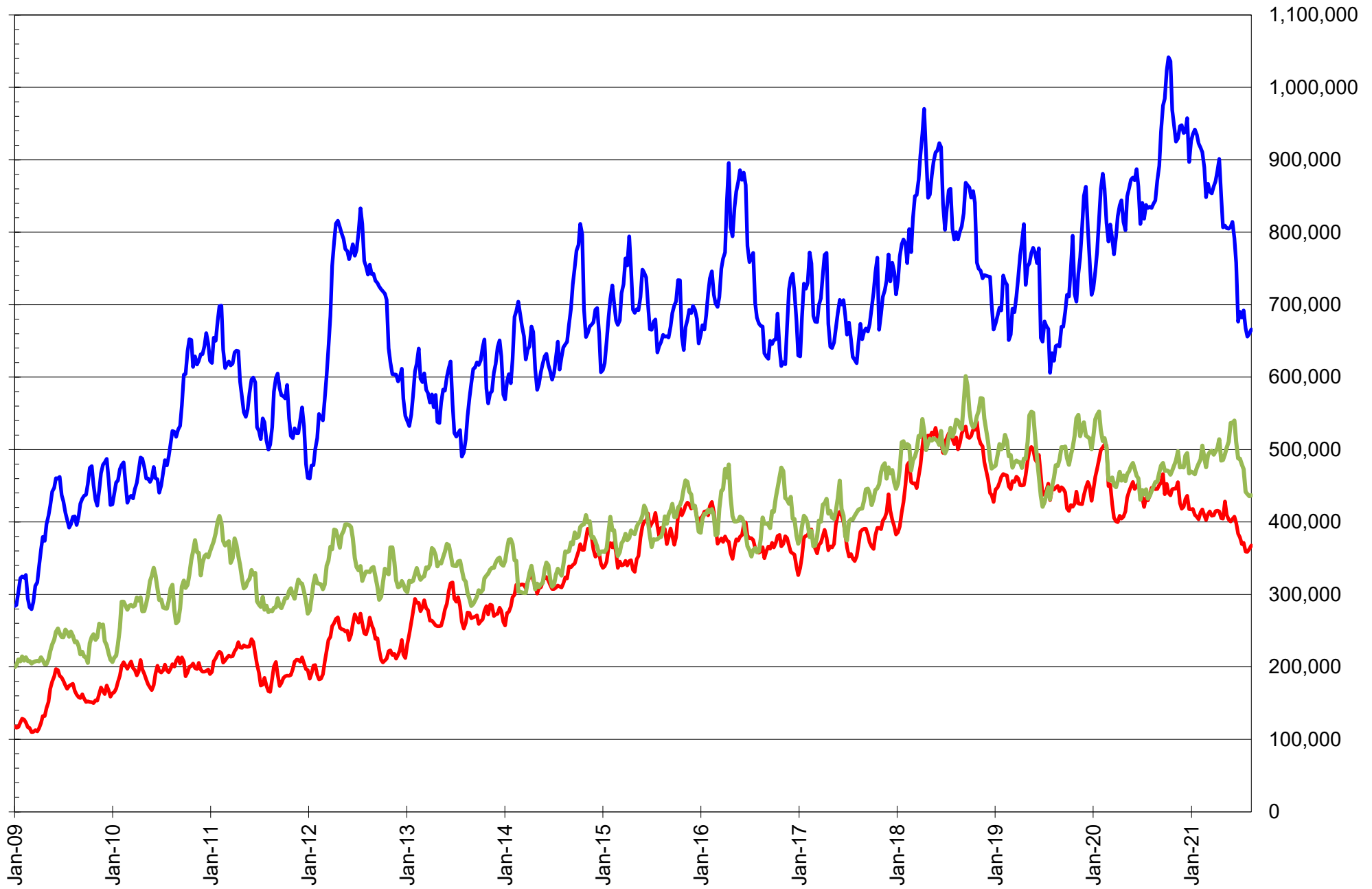
NET POSITION OF FUTURES ONLY LARGE SPECS IN CHICAGO WHEAT



NET POSITION OF LARGE SPECULATORS IN KANSAS CITY WHEAT



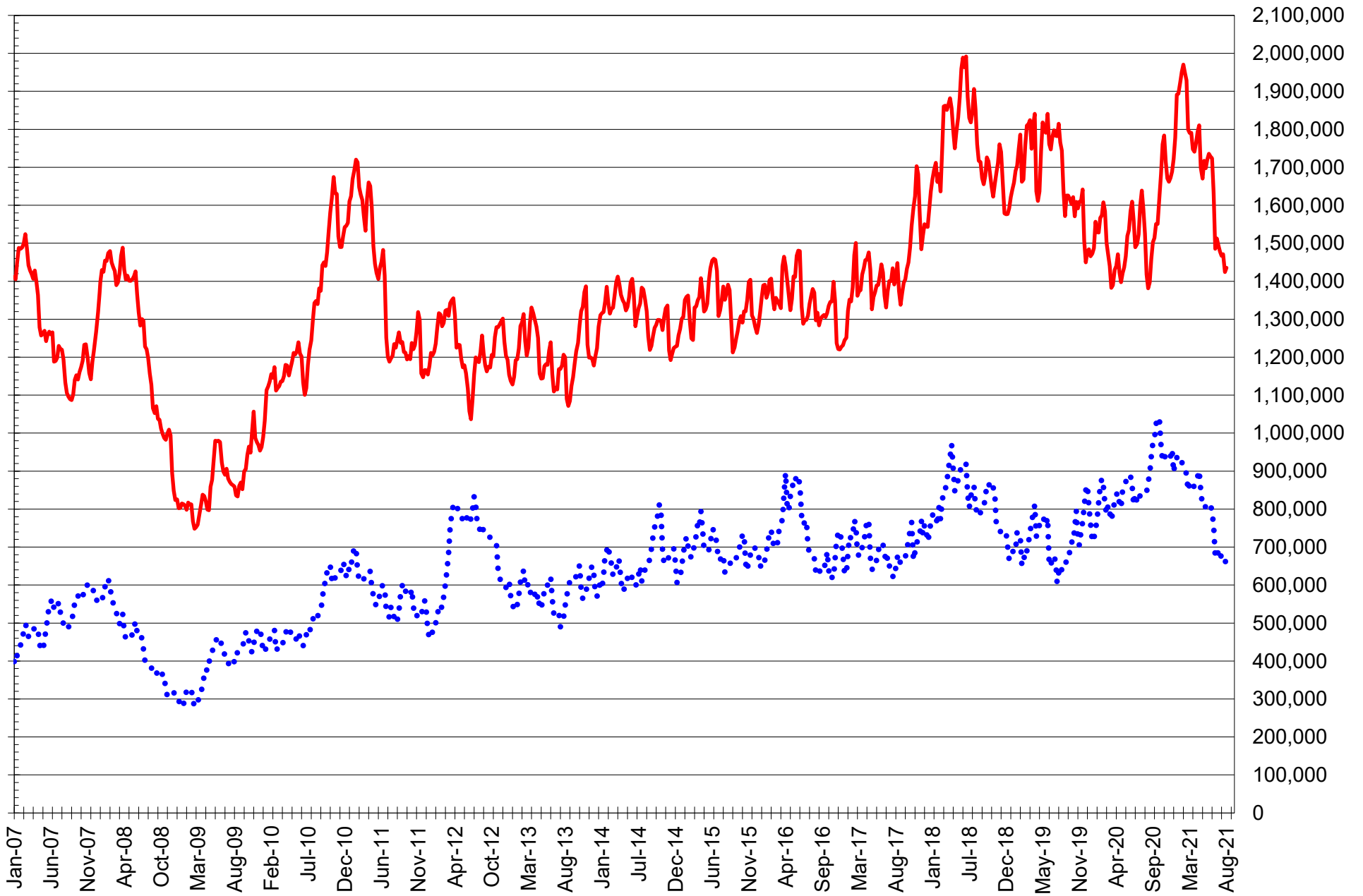
TOTAL OPEN INTEREST IN SOYBEANS, MEAL AND OIL, FUTURES ONLY



SOURCE: CFTC & FI

— SOYBEANS — SOYBEAN MEAL — SOYBEAN OIL

TOTAL OPEN INTEREST IN CORN AND SOYBEANS, FUTURES ONLY



SOURCE: CFTC & FI

— CORN

..... SOYBEANS

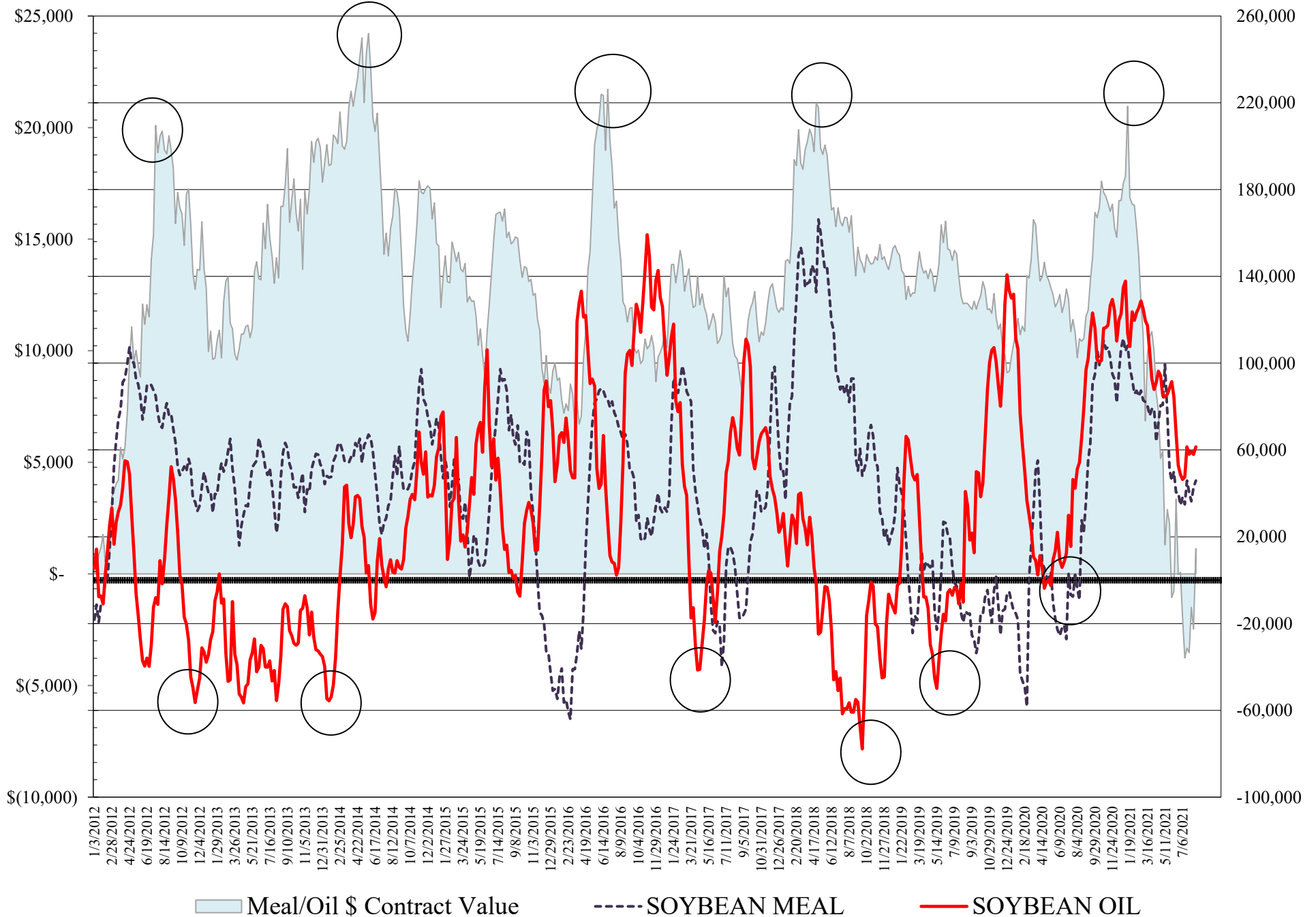
**COMMITMENT OF TRADERS
FUTURES & OPTIONS NET POSITIONS
AS OF 08/17/2021
(IN THOUSAND CONTRACTS)**

	COMMERCIAL				(FUND) NON COMMERCIAL				(SPEC) NON-REPORTABLE			
	17-Aug	10-Aug	3-Aug	27-Jul	17-Aug	10-Aug	3-Aug	27-Jul	17-Aug	10-Aug	3-Aug	27-Jul
WHEAT												
Chicago	-29.9	-26.3	-24.6	-12.1	40.5	38.5	37.4	25.1	-10.6	-12.2	-12.8	-13.0
Kansas City	-44.4	-40.5	-35.3	-28.0	42.4	40.9	36.6	29.3	2.0	-0.3	-1.3	-1.2
Minneapolis	-28.3	-25.9	-25.0	-23.5	17.7	14.8	13.2	10.1	10.5	11.1	11.7	13.4
All Wheat	-102.6	-92.8	-84.8	-63.7	100.6	94.1	87.2	64.5	2.0	-1.4	-2.4	-0.9
CORN	-275.6	-254.4	-256.9	-247.7	352.6	327.6	323.7	308.5	-77.0	-73.2	-66.8	-60.8
OATS	-1.9	-2.0	-1.8	-2.2	0.9	0.7	0.7	0.7	1.0	1.2	1.1	1.5
SOYBEANS	-80.5	-79.3	-70.2	-83.4	95.7	94.9	84.2	94.9	-15.2	-15.6	-14.0	-11.6
SOY OIL	-68.3	-64.2	-63.4	-63.5	61.5	57.9	59.3	58.0	6.9	6.3	4.1	5.4
SOY MEAL	-72.8	-66.8	-58.6	-65.0	45.9	42.7	36.3	40.5	27.0	24.1	22.3	24.5

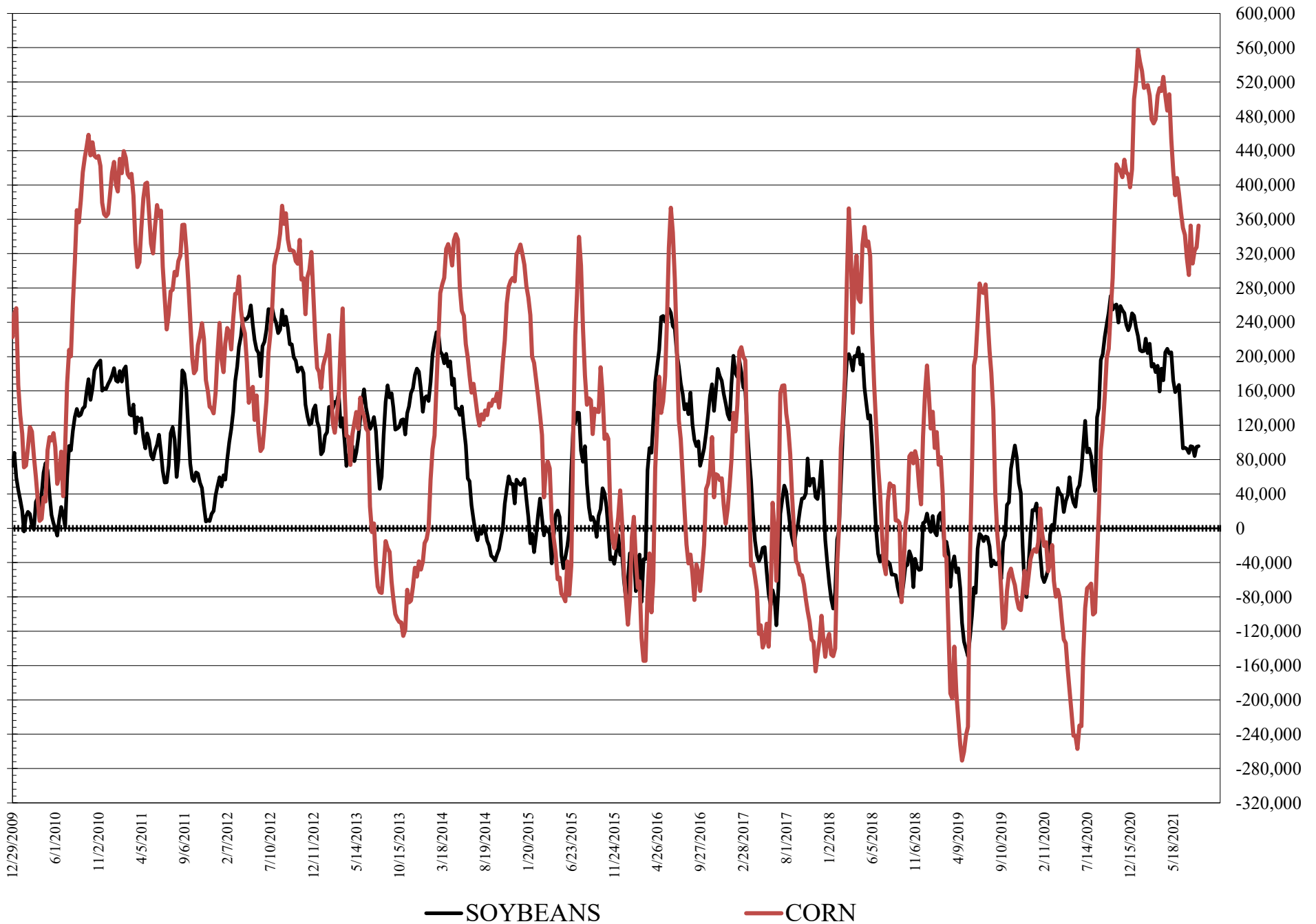
	TOTAL OPEN INTEREST				COMMERCIALS		% HELD BY TRADERS LARGE (FUNDS)		SMALL (NON-REP)	
	17-Aug	10-Aug	3-Aug	27-Jul	LONG	SHORT	LONG	SHORT	LONG	SHORT
WHEAT										
Chicago	494,409	476,360	464,439	424,737			25%	16%	7%	9%
Kansas City	256,929	253,628	247,412	229,649			33%	16%	9%	8%
Minneapolis	84,752	85,925	88,863	86,761			23%	2%	29%	16%
CORN	1,989,268	1,973,657	1,992,118	1,976,722			20%	3%	8%	12%
OATS	4,902	4,699	4,687	4,885						
SOYBEANS	878,154	873,847	867,297	885,088			18%	7%	6%	8%
SOY OIL	502,103	501,924	504,327	508,178			20%	7%	7%	6%
SOY MEAL	407,639	402,359	399,064	398,615			18%	7%	13%	6%

SOURCE: CFTC & FI

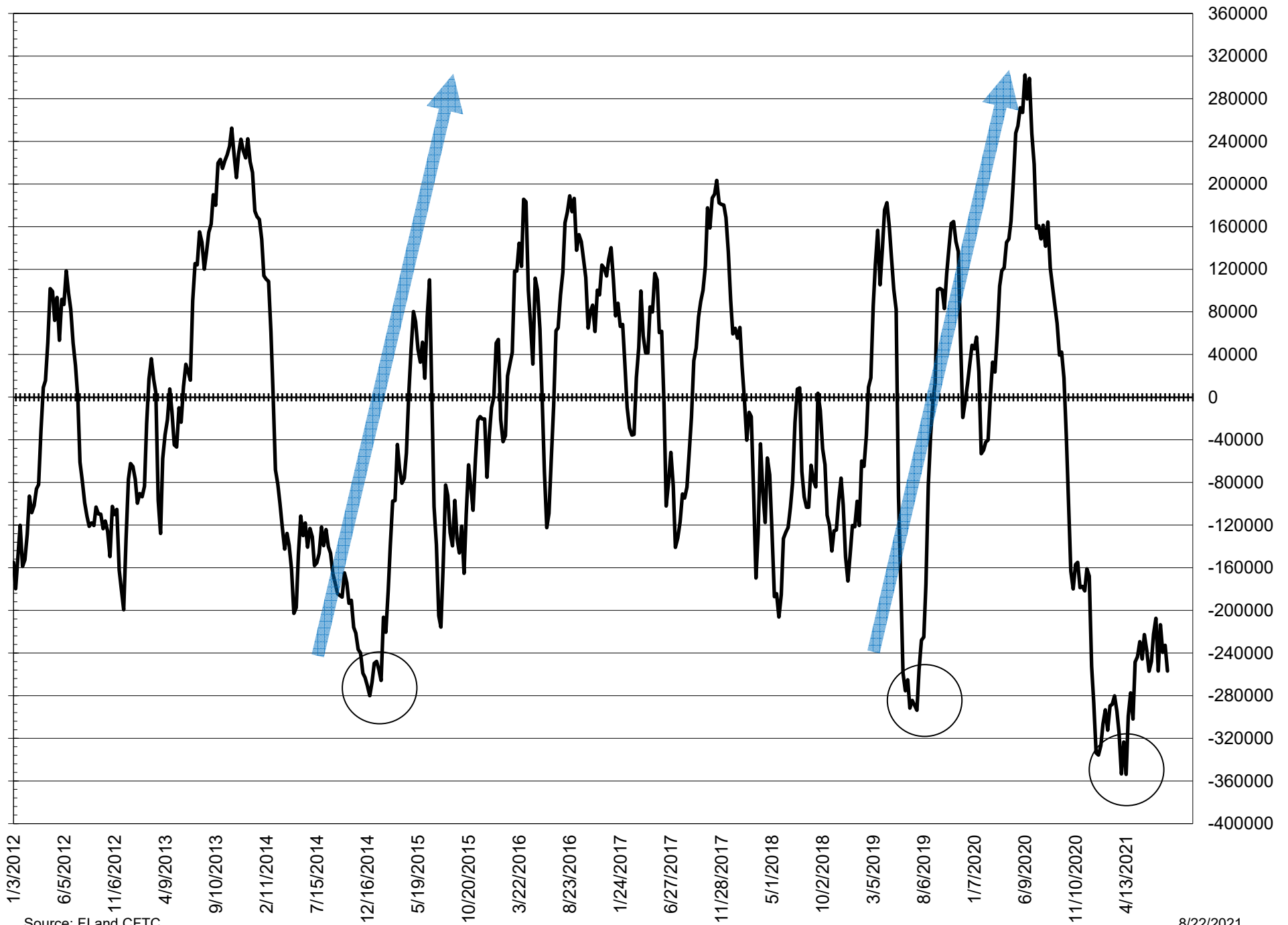
NET POSITION FUTURES AND OPTIONS OF LARGE SPECULATORS IN SOYBEAN MEAL AND SOYBEAN OIL



NET POSITION FUTURES AND OPTIONS OF LARGE SPECULATORS IN SOYBEANS AND CORN



NET POSITION FUTURES AND OPTIONS SPREAD OF LARGE SPECULATORS IN SOYBEANS MINUS CORN



Source: FI and CFTC

8/22/2021

**DISAGGREGATED COMMITMENT OF TRADERS
FUTURES ONLY NET POSITIONS
AS OF 08/17/2021
(IN THOUSAND CONTRACTS)**

	PRODUCER / MERCHANT / PROCESSOR / USER				(INDEX/ETF) SWAP DEALERS				(CTA/CPO/OTHER UNREGISTERED) MANAGED MONEY			
	17-Aug	10-Aug	3-Aug	27-Jul	17-Aug	10-Aug	3-Aug	27-Jul	17-Aug	10-Aug	3-Aug	27-Jul
	WHEAT											
Chicago	(93.1)	(87.2)	(81.2)	(71.9)	57.0	55.8	53.0	54.9	22.1	16.9	12.4	0.2
Kansas City	(86.0)	(85.4)	(81.4)	(75.4)	42.5	45.5	46.7	46.6	45.6	43.7	37.1	30.9
Minneapolis	(31.5)	(28.8)	(27.7)	(26.5)	3.3	3.2	3.1	3.4	15.0	11.9	10.2	8.3
All Wheat	(210.6)	(201.4)	(190.3)	(173.7)	102.7	104.4	102.8	104.9	82.7	72.6	59.7	39.4
CORN	(520.3)	(502.6)	(514.2)	(513.8)	249.3	252.3	262.3	267.5	269.1	246.5	242.7	225.9
OATS	(2.0)	(2.0)	(1.9)	(2.3)	0.1	0.1	0.1	0.1	0.4	0.3	0.2	0.2
SOYBEANS	(186.6)	(189.4)	(184.4)	(193.8)	86.0	83.0	82.5	81.5	93.7	86.9	73.0	87.9
SOY OIL	(175.8)	(172.5)	(167.7)	(164.9)	104.9	102.9	100.8	97.6	69.4	64.1	65.0	61.5
SOY MEAL	(163.3)	(158.9)	(151.9)	(157.3)	85.5	86.0	86.5	85.3	27.7	25.2	18.2	22.1

	Managed % of OI			
Chicago W	6%	4%	3%	0%
Corn	19%	17%	16%	15%

	TOTAL OPEN INTEREST				OTHER REPORTABLE				NON REPORTABLE			
	17-Aug	10-Aug	3-Aug	27-Jul	17-Aug	10-Aug	3-Aug	27-Jul	17-Aug	10-Aug	3-Aug	27-Jul
	WHEAT											
Chicago	390,322	382,959	373,529	348,122	24.7	26.7	28.5	30.0	(10.7)	(12.2)	(12.8)	(13.2)
Kansas City	229,763	230,837	225,807	213,937	(3.9)	(3.0)	(0.5)	(0.5)	1.9	(0.8)	(1.9)	(1.6)
Minneapolis	77,366	78,501	81,057	79,620	3.2	3.2	3.6	2.2	10.0	10.5	10.9	12.6
All Wheat	697,451	692,297	680,393	641,679	24.0	26.9	31.5	31.7	1.2	(2.4)	(3.8)	(2.2)
CORN	1,435,341	1,424,121	1,471,063	1,466,666	76.8	75.1	75.4	80.7	(74.9)	(71.3)	(66.1)	(60.4)
OATS	4,660	4,485	4,473	4,667	0.4	0.4	0.4	0.4	1.0	1.3	1.1	1.5
SOYBEANS	665,803	660,007	655,874	667,567	22.7	35.5	42.8	37.7	(15.8)	(15.9)	(13.9)	(13.3)
SOY OIL	436,726	435,486	438,467	441,669	(4.9)	(0.7)	(2.2)	0.4	6.3	6.2	4.1	5.4
SOY MEAL	367,632	362,641	358,871	359,223	27.2	27.6	28.9	29.4	22.9	20.1	18.4	20.5

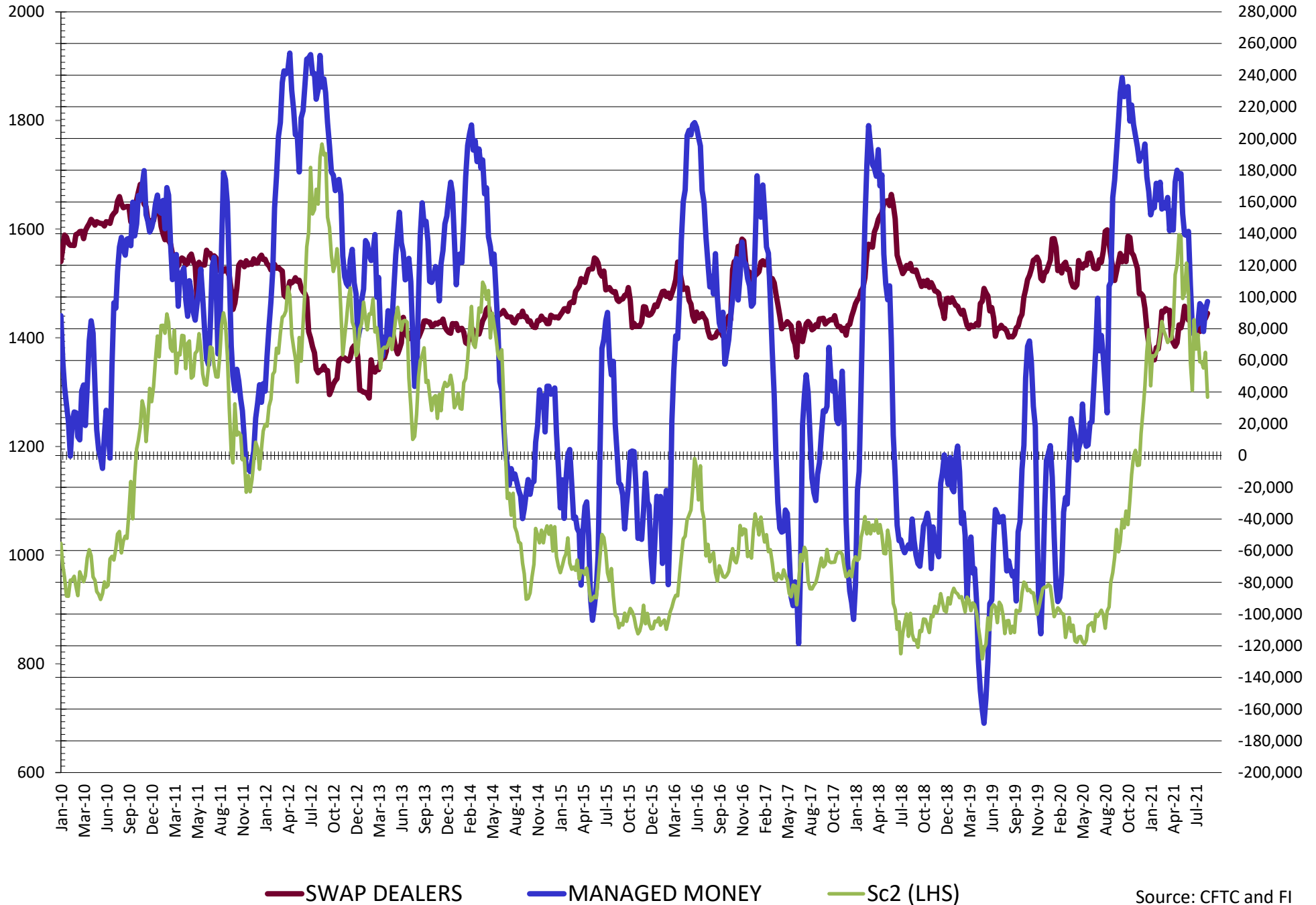
SOURCE: CFTC & FI

**DISAGGREGATED COMMITMENT OF TRADERS
FUTURES & OPTIONS NET POSITIONS
AS OF 08/17/2021
(IN THOUSAND CONTRACTS)**

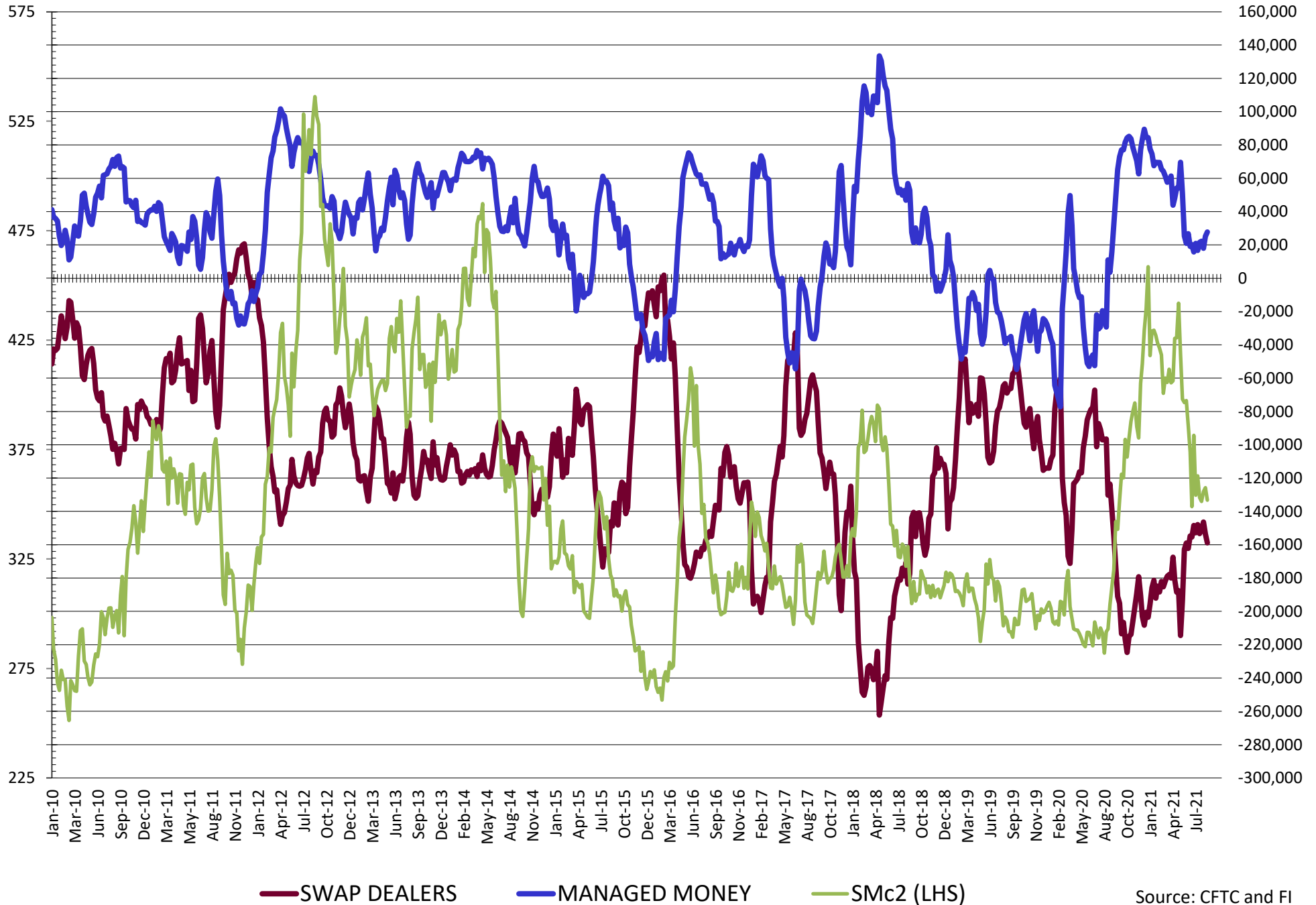
	PRODUCER / MERCHANT / PROCESSOR / USER				(INDEX/ETF) SWAP DEALERS				(CTA/CPO/OTHER UNREGISTERED) MANAGED MONEY			
	17-Aug	10-Aug	3-Aug	27-Jul	17-Aug	10-Aug	3-Aug	27-Jul	17-Aug	10-Aug	3-Aug	27-Jul
	WHEAT											
Chicago	(89.0)	(83.8)	(78.8)	(68.1)	59.1	57.4	54.2	56.0	24.2	19.1	15.3	3.1
Kansas City	(85.8)	(85.8)	(81.8)	(74.6)	41.4	45.3	46.5	46.5	46.5	44.8	38.2	31.8
Minneapolis	(31.4)	(29.0)	(28.0)	(26.8)	3.1	3.0	3.0	3.3	15.0	11.9	10.2	8.3
All Wheat	(206.2)	(198.5)	(188.5)	(169.4)	103.6	105.7	103.7	105.8	85.8	75.8	63.7	43.2
CORN	(502.9)	(486.5)	(497.5)	(495.1)	227.2	232.0	240.7	247.4	278.9	254.0	246.5	228.0
OATS	(2.0)	(2.1)	(1.9)	(2.3)	0.1	0.1	0.1	0.1	0.4	0.3	0.2	0.2
SOYBEANS	(170.2)	(165.8)	(156.8)	(167.7)	89.7	86.5	86.6	84.4	97.2	91.6	78.3	94.1
SOY OIL	(172.0)	(165.3)	(162.3)	(159.2)	103.7	101.1	98.9	95.7	69.1	63.5	64.7	61.3
SOY MEAL	(158.8)	(153.5)	(146.4)	(151.2)	86.0	86.8	87.8	86.1	27.7	25.2	17.9	22.2
	TOTAL				OTHER REPORTABLE				NON REPORTABLE			
	OPEN INTEREST				17-Aug				27-Jul			
	17-Aug	10-Aug	3-Aug	27-Jul	17-Aug	10-Aug	3-Aug	27-Jul	17-Aug	10-Aug	3-Aug	27-Jul
WHEAT												
Chicago	494,409	476,360	464,439	424,737	16.3	19.4	22.0	22.1	(10.6)	(12.2)	(12.8)	(13.0)
Kansas City	256,929	253,628	247,412	229,649	(4.2)	(3.9)	(1.6)	(2.5)	2.0	(0.3)	(1.3)	(1.2)
Minneapolis	84,752	85,925	88,863	86,761	2.7	2.9	3.1	1.8	10.5	11.1	11.7	13.4
All Wheat	836,090	815,913	800,714	741,147	14.8	18.3	23.5	21.4	2.0	(1.4)	(2.4)	(0.9)
CORN	1,989,268	1,973,657	1,992,118	1,976,722	73.7	73.6	77.2	80.5	(77.0)	(73.2)	(73.2)	(73.2)
OATS	4,902	4,699	4,687	4,885	0.5	0.4	0.5	0.5	1.0	1.2	1.1	1.5
SOYBEANS	878,154	873,847	867,297	885,088	(1.5)	3.3	5.9	0.9	(15.2)	(15.6)	(14.0)	(11.6)
SOY OIL	502,103	501,924	504,327	508,178	(7.6)	(5.7)	(5.4)	(3.2)	6.9	6.3	4.1	5.4
SOY MEAL	407,639	402,359	399,064	398,615	18.1	17.4	18.4	18.3	27.0	24.1	22.3	24.5

SOURCE: CFTC & FI

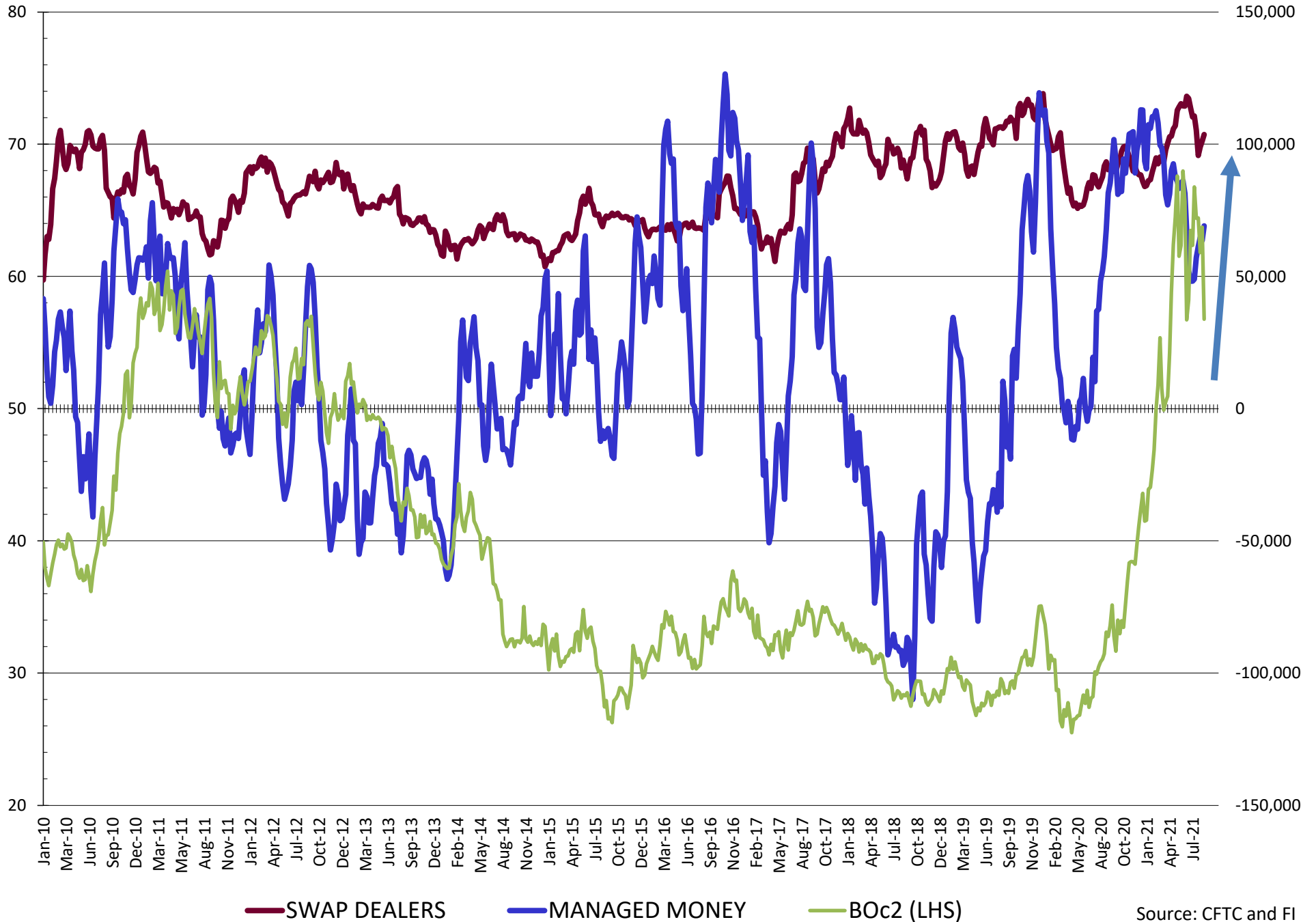
NET POSITION FUTURES AND OPTIONS OF SWAP AND MANAGED FUNDS IN SOYBEANS



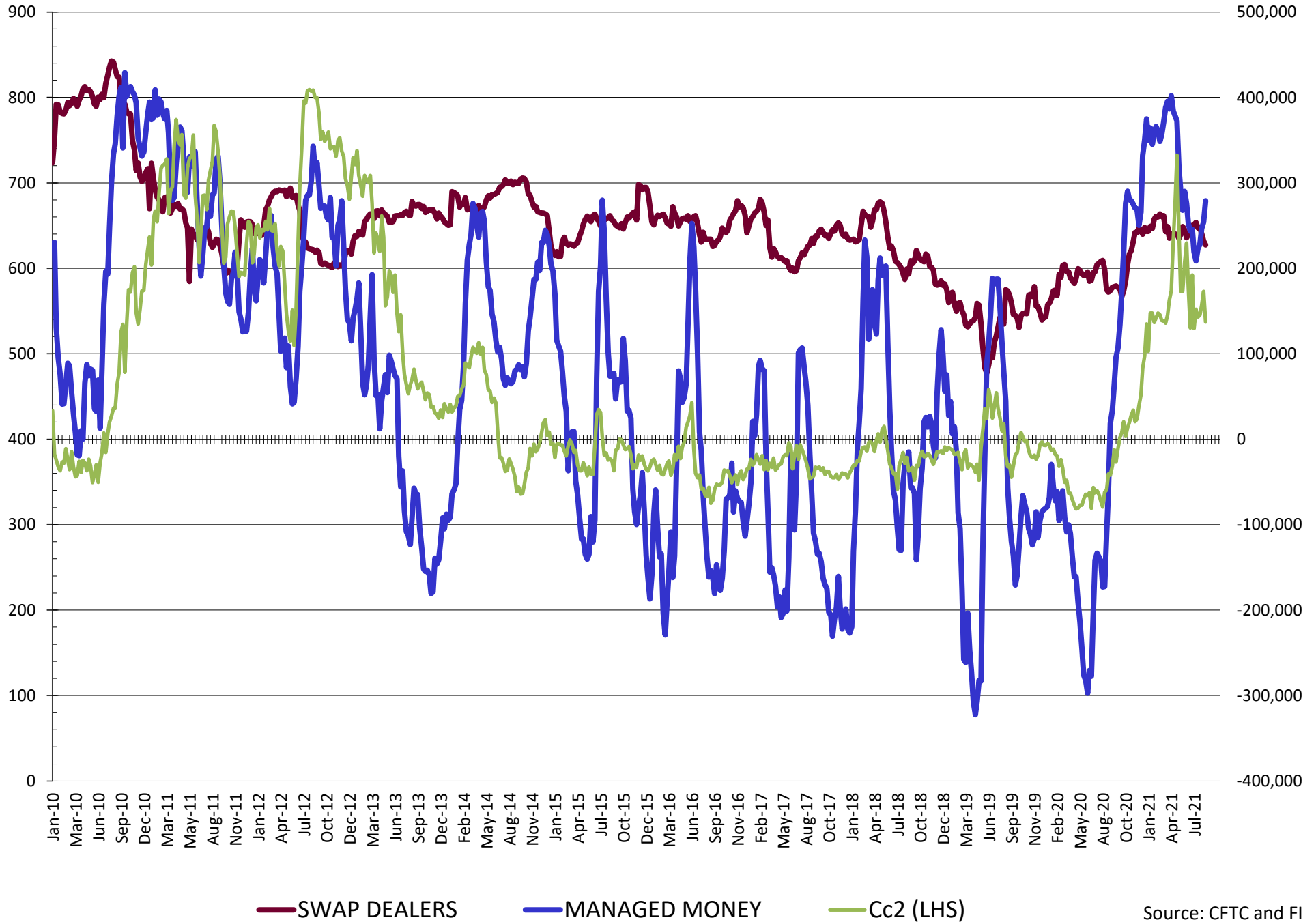
NET POSITION FUTURES AND OPTIONS OF SWAP AND MANAGED FUNDS IN SOYBEAN MEAL



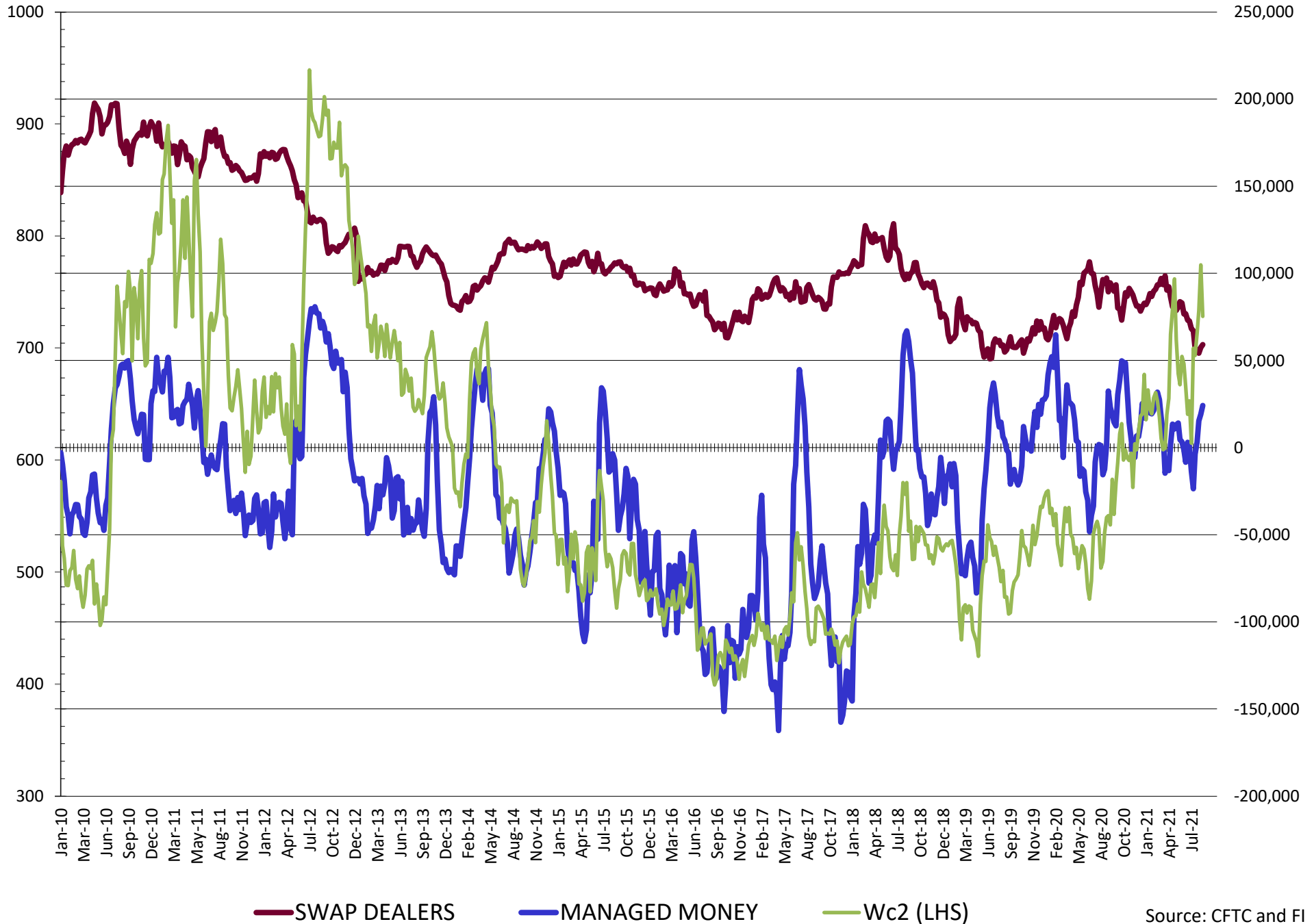
NET POSITION FUTURES AND OPTIONS OF SWAP AND MANAGED FUNDS IN SOYBEAN OIL



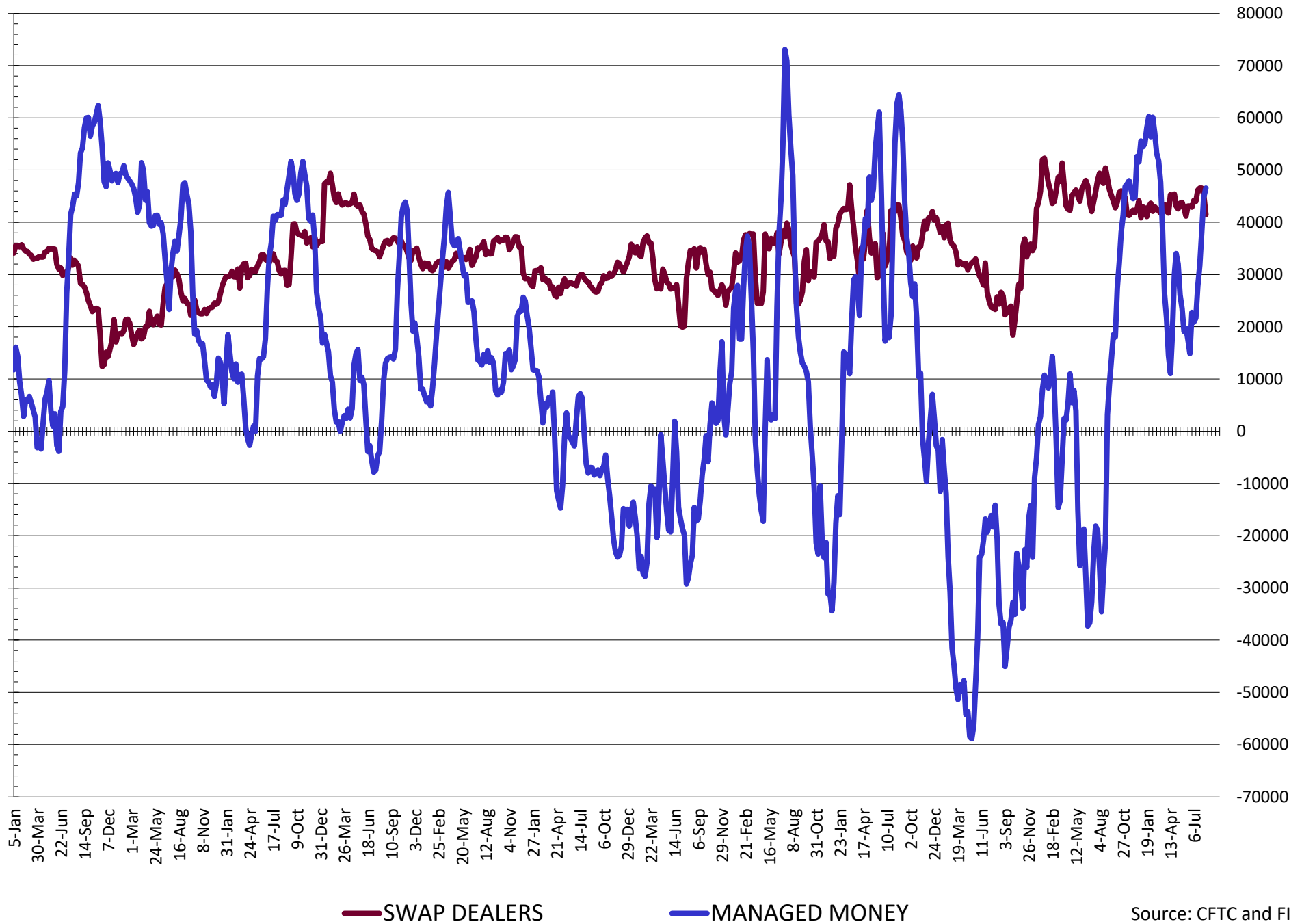
NET POSITION FUTURES AND OPTIONS OF SWAP AND MANAGED FUNDS IN CORN



NET POSITION FUTURES AND OPTIONS OF SWAP AND MANAGED FUNDS IN CHICAGO WHEAT

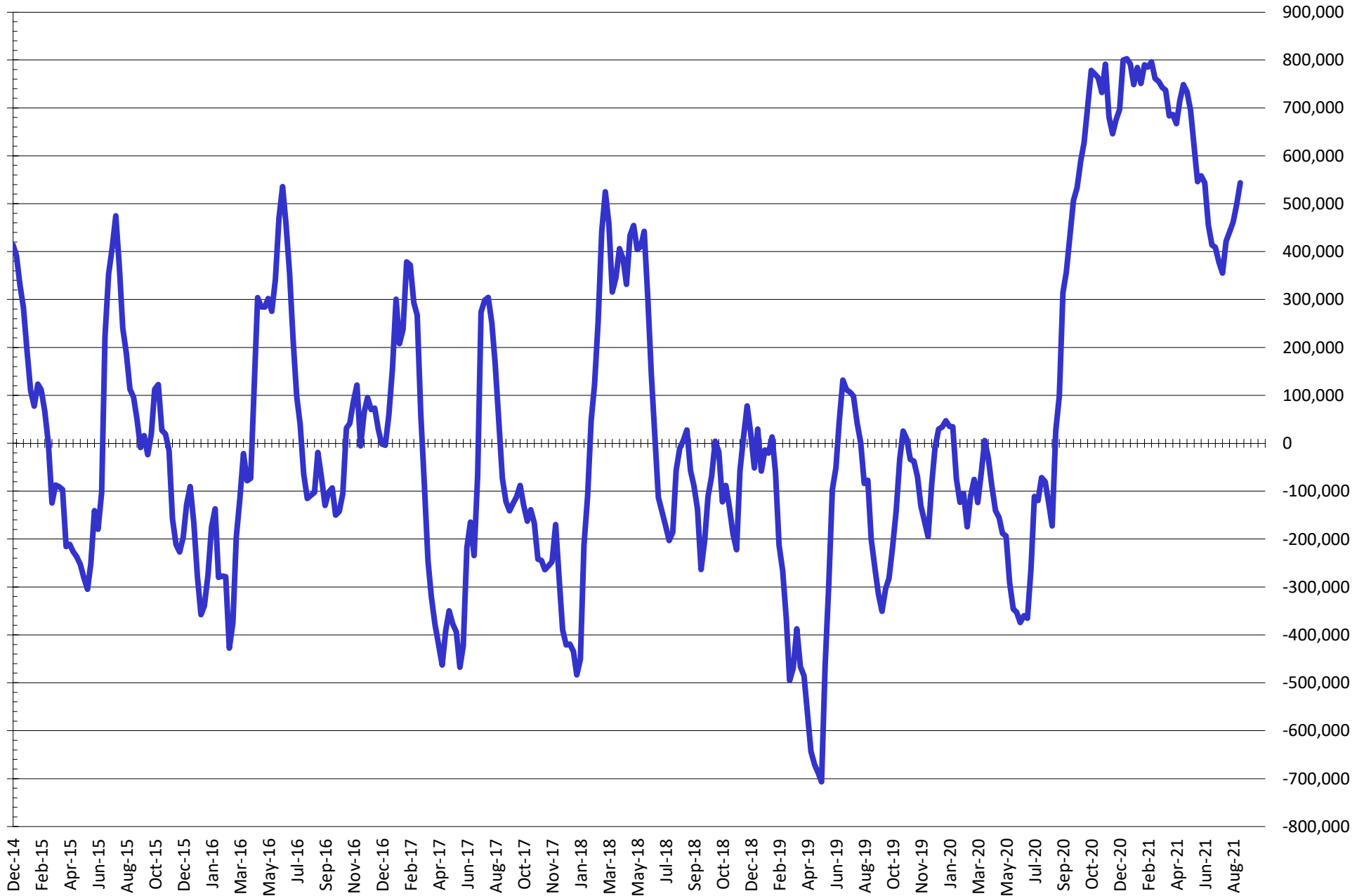


NET POSITION FUTURES AND OPTIONS OF SWAP AND MANAGED FUNDS IN KANSAS WHEAT



Source: CFTC and FI
8/22/2021

NET POSITION FUTURES AND OPTIONS OF SWAP AND MANAGED FUNDS IN COMBINED SRW, HRW, CORN, SOYBEANS, SOYMEAL AND SOYOIL



— Net Managed Money

Source: CFTC and FI
8/22/2021

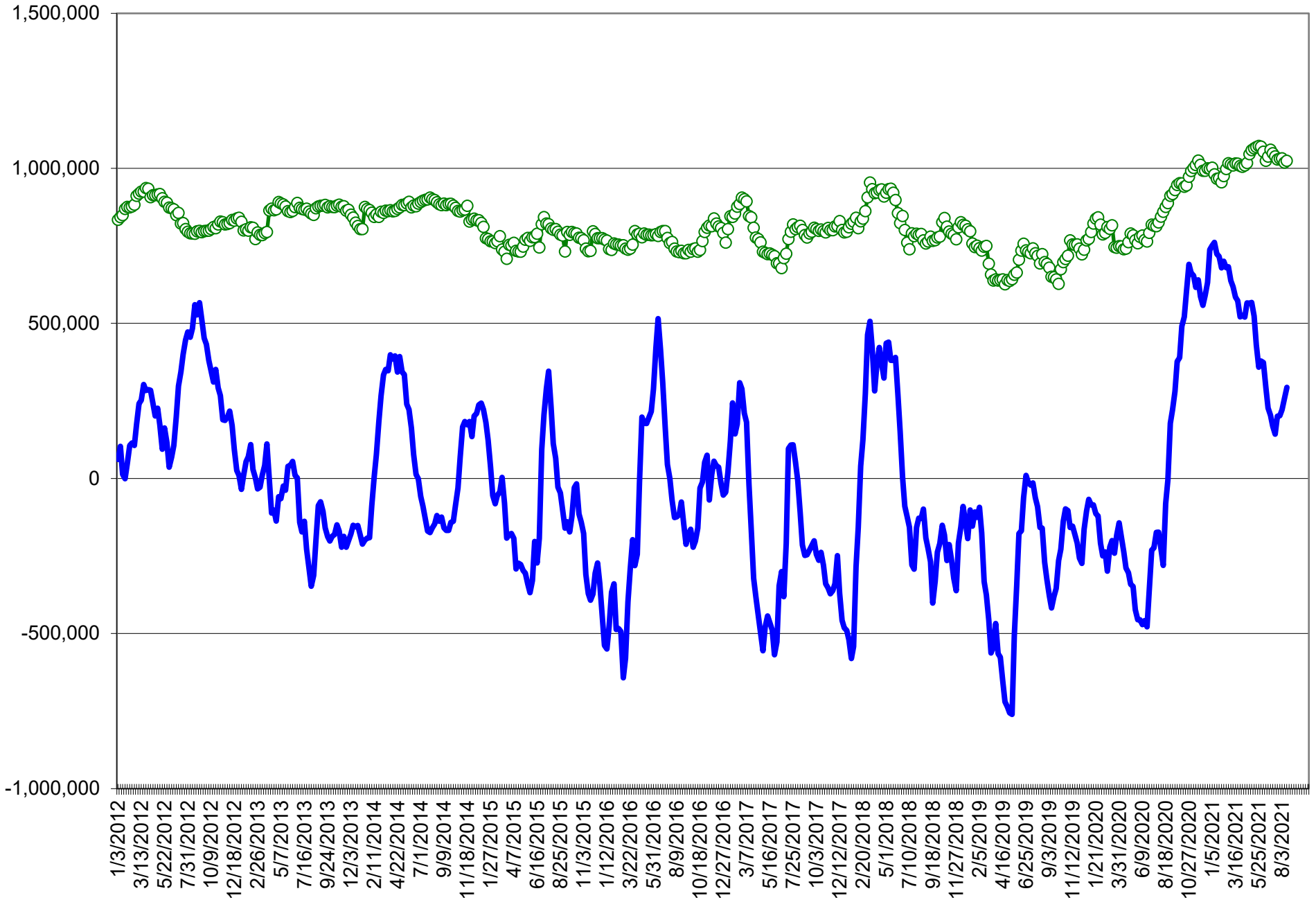
COMMITMENT OF TRADERS
FUTURES & OPTIONS NET POSITIONS (INDEX BROKEN OUT)
AS OF 08/17/2021
(IN THOUSAND CONTRACTS)

	COMMERCIAL				(FUND) NON COMMERCIAL				(SPEC) NON-REPORTABLE			
	17-Aug	10-Aug	3-Aug	27-Jul	17-Aug	10-Aug	3-Aug	27-Jul	17-Aug	10-Aug	3-Aug	27-Jul
	WHEAT											
Chicago	(123.2)	(116.2)	(111.2)	(99.9)	(6.3)	(10.9)	(15.3)	(29.3)	(10.6)	(12.2)	(12.8)	(13.0)
Kansas City	(91.7)	(89.2)	(85.9)	(77.6)	21.8	21.9	19.6	13.7	2.0	(0.3)	(1.3)	(1.2)
Minneapolis	-	-	-	-	-	-	-	-	-	-	-	-
All Wheat	(214.8)	(205.4)	(197.0)	(177.5)	15.5	11.0	4.2	(15.5)	(8.6)	(12.5)	(14.1)	(14.2)
CORN	(536.4)	(521.0)	(530.6)	(525.8)	199.0	173.7	166.8	154.4	(77.0)	(73.2)	(66.8)	(60.8)
OATS	-	-	-	-	-	-	-	-	-	-	-	-
SOYBEANS	(196.1)	(189.3)	(178.6)	(190.2)	32.0	33.1	20.1	29.3	(15.2)	(15.6)	(14.0)	(11.6)
SOY OIL	(158.5)	(152.7)	(150.2)	(149.0)	33.1	29.5	28.8	27.5	6.9	6.3	4.1	5.4
SOY MEAL	(144.6)	(137.0)	(128.9)	(134.5)	13.6	10.1	1.7	6.2	27.0	24.1	22.3	24.5

	TOTAL OPEN INTEREST				(INDEX) COMMERCIAL INDEX TRADERS				(INDEX) % NET OF TOTAL OPEN INTEREST			
	17-Aug	10-Aug	3-Aug	27-Jul	17-Aug	10-Aug	3-Aug	27-Jul	17-Aug	10-Aug	3-Aug	27-Jul
	WHEAT											
Chicago	494,409	476,360	464,439	424,737	140.1	139.3	139.3	142.1	28.3%	29.2%	30.0%	33.5%
Kansas City	256,929	253,628	247,412	229,649	67.8	67.7	67.6	65.1	26.4%	26.7%	27.3%	28.4%
Minneapolis	-	-	-	-	-	-	-	-	-	-	-	-
All Wheat	751,338	729,988	711,851	654,386	207.9	206.9	206.9	207.3	27.7%	28.3%	29.1%	31.7%
CORN	1,989,268	1,973,657	1,992,118	1,976,722	414.3	420.5	430.6	432.1	20.8%	21.3%	21.6%	21.9%
OATS	-	-	-	-	-	-	-	-	-	-	-	-
SOYBEANS	878,154	873,847	867,297	885,088	179.3	171.8	172.6	172.5	20.4%	19.7%	19.9%	19.5%
SOY OIL	502,103	501,924	504,327	508,178	118.5	116.9	117.3	116.1	23.6%	23.3%	23.3%	22.8%
SOY MEAL	407,639	402,359	399,064	398,615	104.0	102.7	104.9	103.7	25.5%	25.5%	26.3%	26.0%

SOURCE: CFTC & FI

NET POSITION FUTURES AND OPTIONS OF SPECULATORS AND INDEX FUNDS IN COMBINED SRW, HRW, CORN, SOYBEANS, SOYMEAL AND SOYOIL



Source: CFTC and FI

○ Net Index

— Net Speculator

Traditional Daily Estimate of Funds 8/17/21

	(Neg)-"Short"	Pos-"Long"			
Actual less Est.	19.2	(17.0)	0.2	0.0	(2.8)
	Corn	Bean	Chi. Wheat	Meal	Oil
Actual	345.8	116.4	46.8	54.9	64.6
18-Aug	1.0	(5.0)	1.0	(1.0)	(3.0)
19-Aug	(14.0)	(18.0)	(8.0)	(4.0)	(7.0)
20-Aug	(18.0)	(15.0)	(9.0)	1.0	(13.0)
23-Aug					
24-Aug					
FI Est. of Futures Only 8/17/21	314.8	78.4	30.8	50.9	41.6
FI Est. Futures & Options	321.6	57.7	24.5	41.8	38.5
Futures only record long "Traditional Funds"	547.7 1/26/2021	280.9 11/10/2020	86.5 8/7/2018	167.5 5/1/2018	160.2 11/1/2016
Futures only record short	(235.0) 6/9/2020	(118.3) 4/30/2019	(130.0) 4/25/2017	(49.5) 3/1/2016	(69.8) 9/18/2018
Futures and options record net long	557.6 1/12/2021	270.9 10/6/2020	64.8 8/7/2012	132.1 5/1/2018	159.2 1/1/2016
Futures and options record net short	(270.6) 4/26/2019	(132.0) 4/30/2019	(143.3) 4/25/2017	(64.1) 3/1/2016	(77.8) 9/18/2018

Managed Money Daily Estimate of Funds 8/17/21

	Corn	Bean	Chi. Wheat	Meal	Oil
Latest CFTC Fut. Only	269.1	93.7	22.1	27.7	69.4
Latest CFTC F&O	278.9	97.2	24.2	27.7	69.1
	Corn	Bean	Chi. Wheat	Meal	Oil
FI Est. Managed Fut. Only	238	56	6	24	46
FI Est. Managed Money F&O	248	59	8	24	46

Index Funds Latest Positions (as of last Tuesday)

Index Futures & Options	414.3	179.3	140.1	NA	118.5
Change From Previous Week	(6.2)	7.6	0.8	NA	1.7

Source: Reuters, CFTC & FI (FI est. are noted with latest date)

Disclaimer

TO CLIENTS/PROSPECTS OF FUTURES INTERNATIONAL, SEE RISK DISCLOSURE BELOW:

THIS COMMUNICATION IS CONVEYED AS A SOLICITATION FOR ENTERING INTO A DERIVATIVES TRANSACTION.

Any trading recommendations and market or other information to Customer by Futures International (FI), although based upon information obtained from sources believed by FI to be reliable may not be accurate and may be changed without notice to customer. FI makes no guarantee as to the accuracy or completeness of any of the information or recommendations furnished to Customer. Customer understands that FI, its managers, employees and/or affiliates may have a position in commodity futures, options or other derivatives which may not be consistent with the recommendations furnished by FI to Customer.

The risk of trading futures and options and other derivatives involves a substantial risk of loss and is not suitable for all persons. In purchasing an option, the risk is limited to the premium paid, and all commissions and fees involved with the trade. When an option is shorted or written, the writer of the option has unlimited risk with respect to the option written. The use of options strategies such as a straddles and strangles involve multiple option positions and may substantially increase the amount of commissions and fees paid to execute the strategy. Option prices do not necessarily move in tandem with cash or futures prices. Each person must consider whether a particular trade, combination of trades or strategy is suitable for that person's financial means and objectives.

This material may include discussions of seasonal patterns, however, futures prices have already factored in the seasonal aspects of supply and demand, and seasonal patterns are no indication of future market trends. Finally, past performance is not indicative of future results.

This communication may contain links to third party websites which are not under the control of FI and FI is not responsible for their content. Products and services are offered only in jurisdictions where solicitation and sale are lawful, and in accordance with applicable laws and regulations in each such jurisdiction.