

**COMMITMENT OF TRADERS
FUTURES ONLY NET POSITIONS
AS OF 08/10/2021
(IN THOUSAND CONTRACTS)**

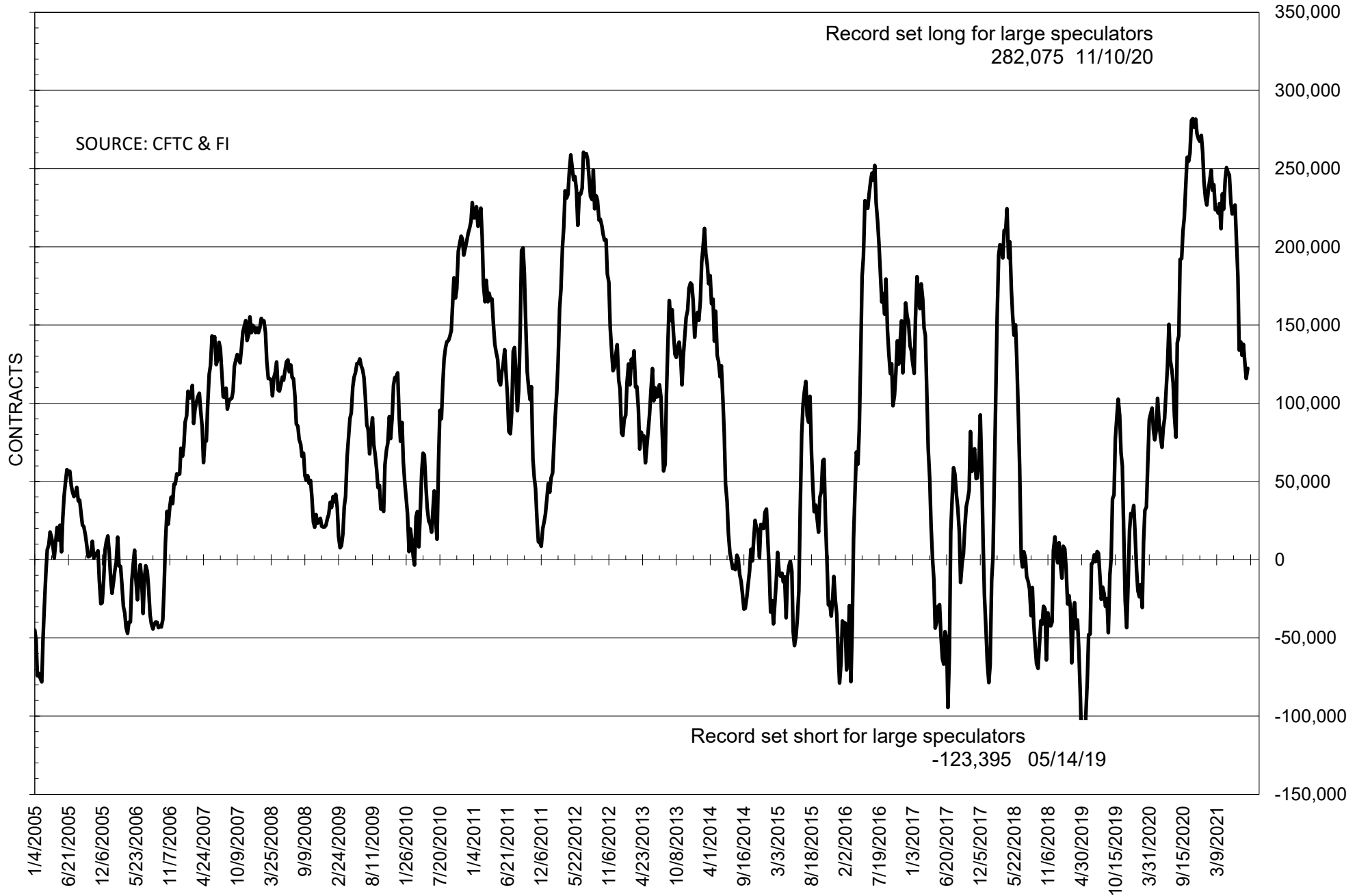
	COMMERCIAL				(FUND) NON COMMERCIAL				(SPEC) NON-REPORTABLE			
	10-Aug	3-Aug	27-Jul	20-Jul	10-Aug	3-Aug	27-Jul	20-Jul	10-Aug	3-Aug	27-Jul	20-Jul
	WHEAT											
Chicago	-31.5	-28.2	-17.0	-12.3	43.6	41.0	30.2	26.8	-12.2	-12.8	-13.2	-14.5
Kansas City	-39.9	-34.7	-28.8	-28.5	40.7	36.6	30.4	27.7	-0.8	-1.9	-1.6	0.7
Minneapolis	-25.6	-24.6	-23.1	-22.9	15.1	13.7	10.5	11.4	10.5	10.9	12.6	11.5
All Wheat	-97.0	-87.5	-68.8	-63.7	99.5	91.3	71.1	65.9	-2.4	-3.8	-2.2	-2.2
CORN	-250.3	-251.9	-246.3	-256.5	321.6	318.0	306.7	311.5	-71.3	-66.1	-60.4	-55.0
OATS	-1.9	-1.8	-2.1	-2.3	0.7	0.6	0.6	0.7	1.3	1.1	1.5	1.6
SOYBEANS	-106.5	-101.9	-112.3	-127.5	122.4	115.8	125.7	137.7	-15.9	-13.9	-13.3	-10.1
SOY OIL	-69.6	-66.9	-67.3	-75.1	63.4	62.8	61.9	64.9	6.2	4.1	5.4	10.2
SOY MEAL	-72.9	-65.4	-72.0	-74.8	52.9	47.0	51.5	54.9	20.1	18.4	20.5	20.0

Oats positions thin to be reported

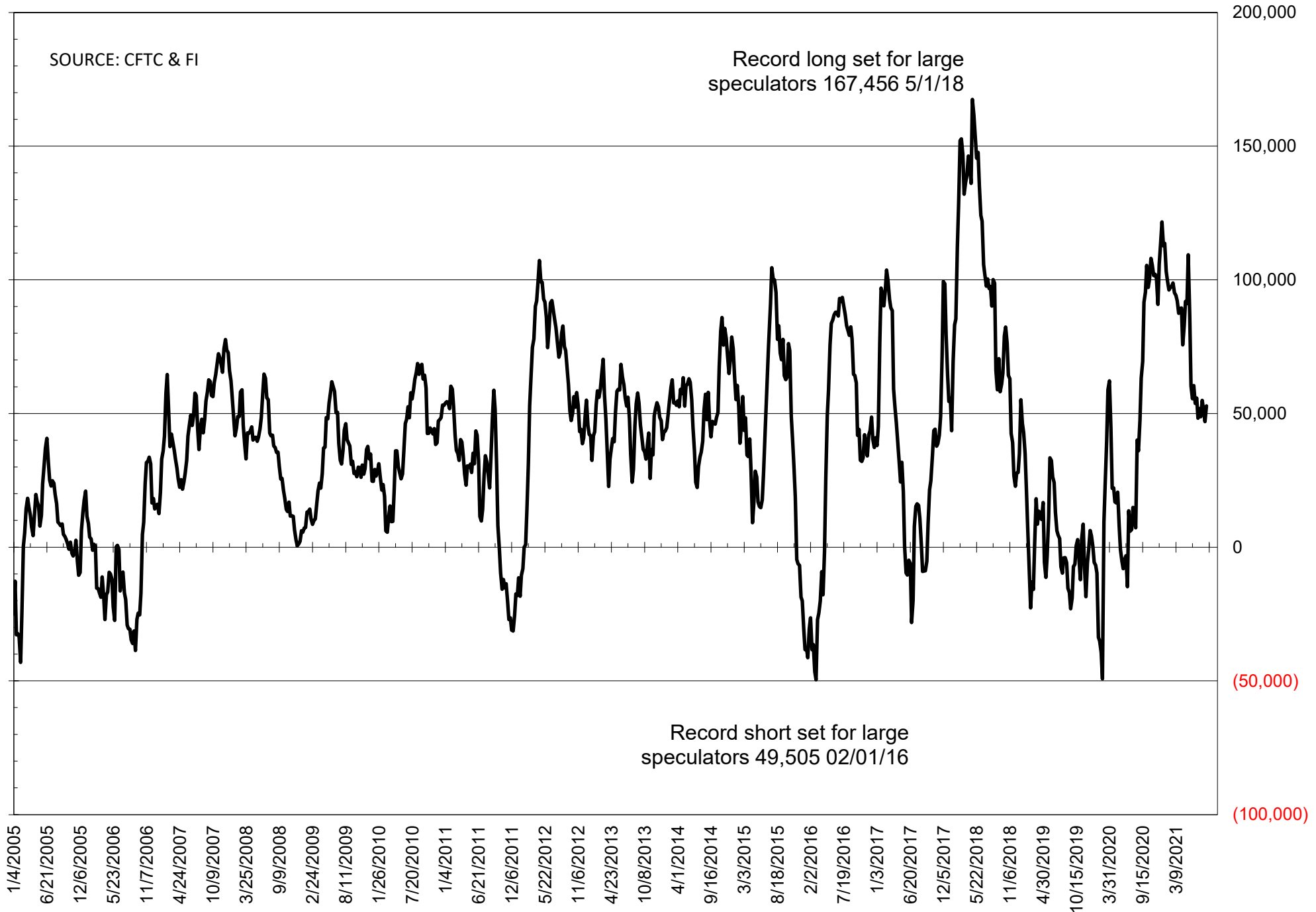
	TOTAL OPEN INTEREST				NEARBY FUTURES PRICE					10-Aug-21 LAST REPORTED % HELD BY TRADERS			
	10-Aug	3-Aug	27-Jul	20-Jul	U Latest	U 10-Aug	U 3-Aug	Q/U 27-Jul	Q/U 20-Jul	LARGE FUND		SMALL	
										LONG	SHORT	LONG	SHORT
WHEAT													
Chicago	382959	373529	348122	341070	762.25	727.00	724.50	674.50	700.50	0%	21%	0%	11%
Kansas City	230837	225807	213937	203364	742.25	714.25	707.50	641.50	660.25	0%	16%	0%	9%
Minneapolis	78501	81057	79620	80312	944.25	916.50	919.75	878.25	916.00	0%	3%	0%	15%
CORN	1424121	1471063	1466666	1478051	568.25	549.25	550.50	548.75	571.75	0%	6%	0%	14%
OATS	4485	4473	4667	4587	494.25	467.25	445.00	465.75	450.75	0%	6%	0%	25%
SOYBEANS	660007	655874	667567	692028	1373.00	1248.25	1328.75	1418.25	1443.50	28%	9%	7%	9%
SOY OIL	435486	438467	441669	473029	63.72	61.19	62.45	66.26	67.02	0%	9%	0%	6%
SOY MEAL	362641	358871	359223	371080	357.60	357.50	347.50	358.80	365.50	0%	10%	0%	7%

SOURCE: CFTC & FI

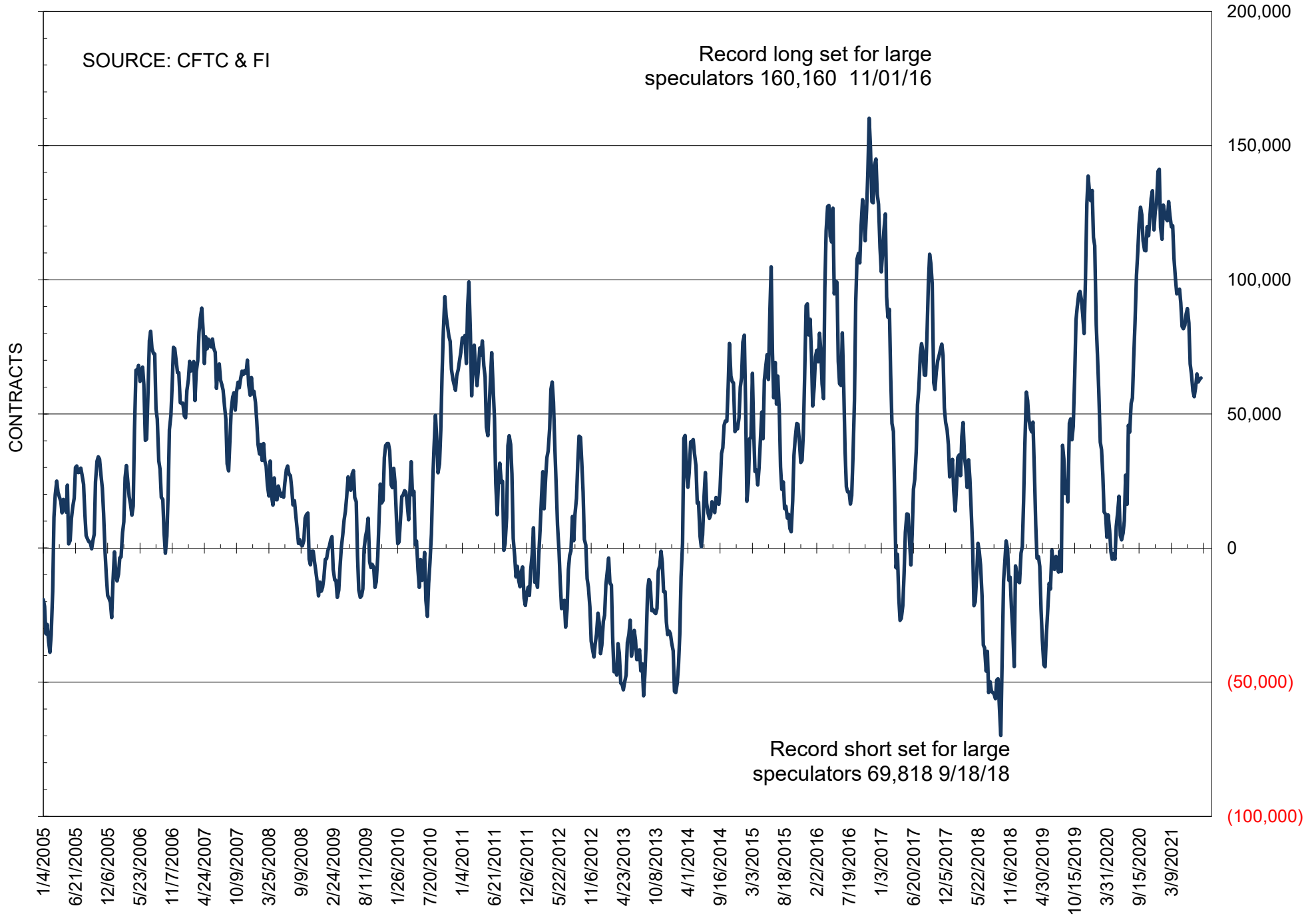
NET POSITION OF FUTURES ONLY LARGE SPECS IN SOYBEANS



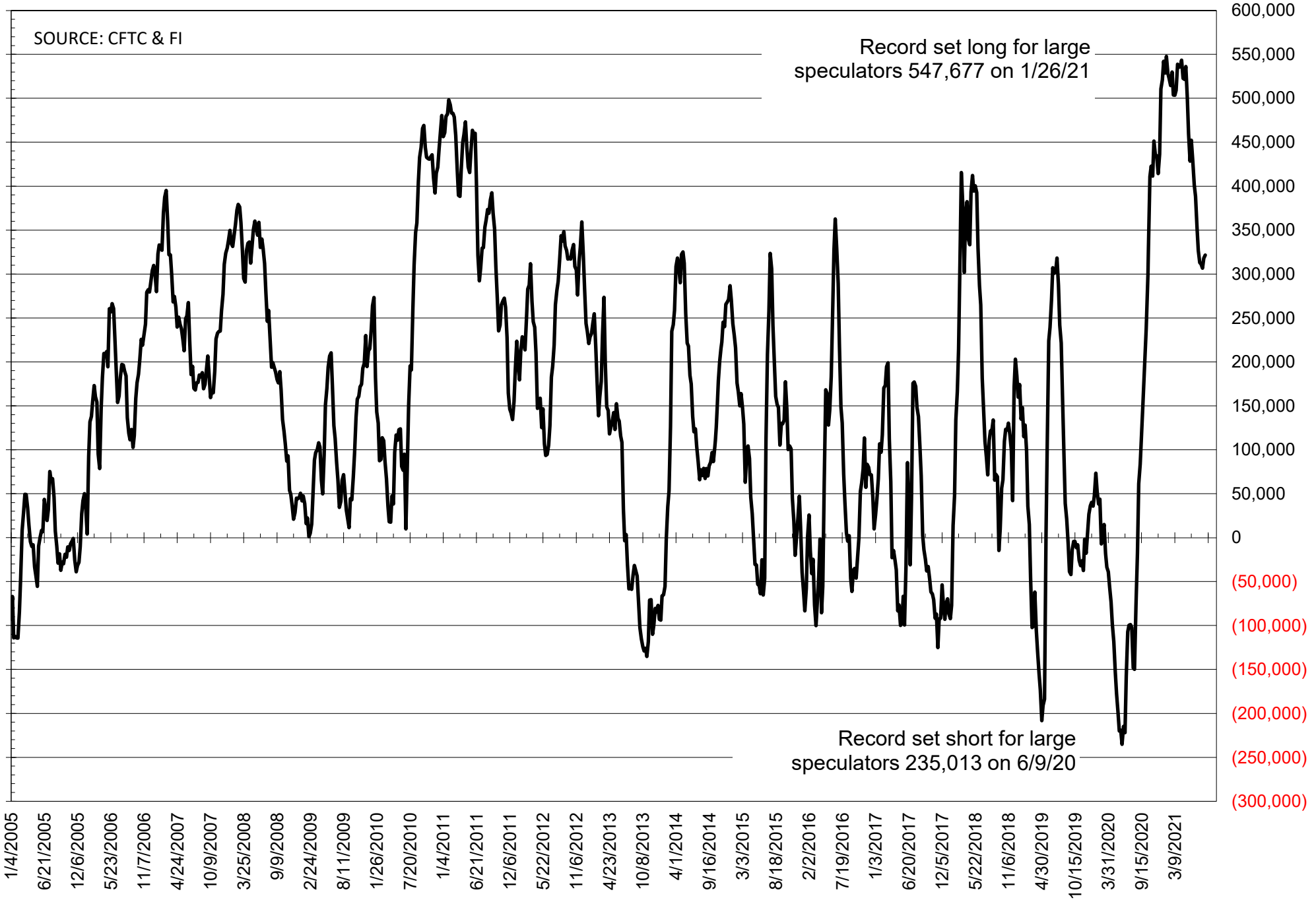
NET POSITION OF FUTURES ONLY LARGE SPECS IN SOYMEAL



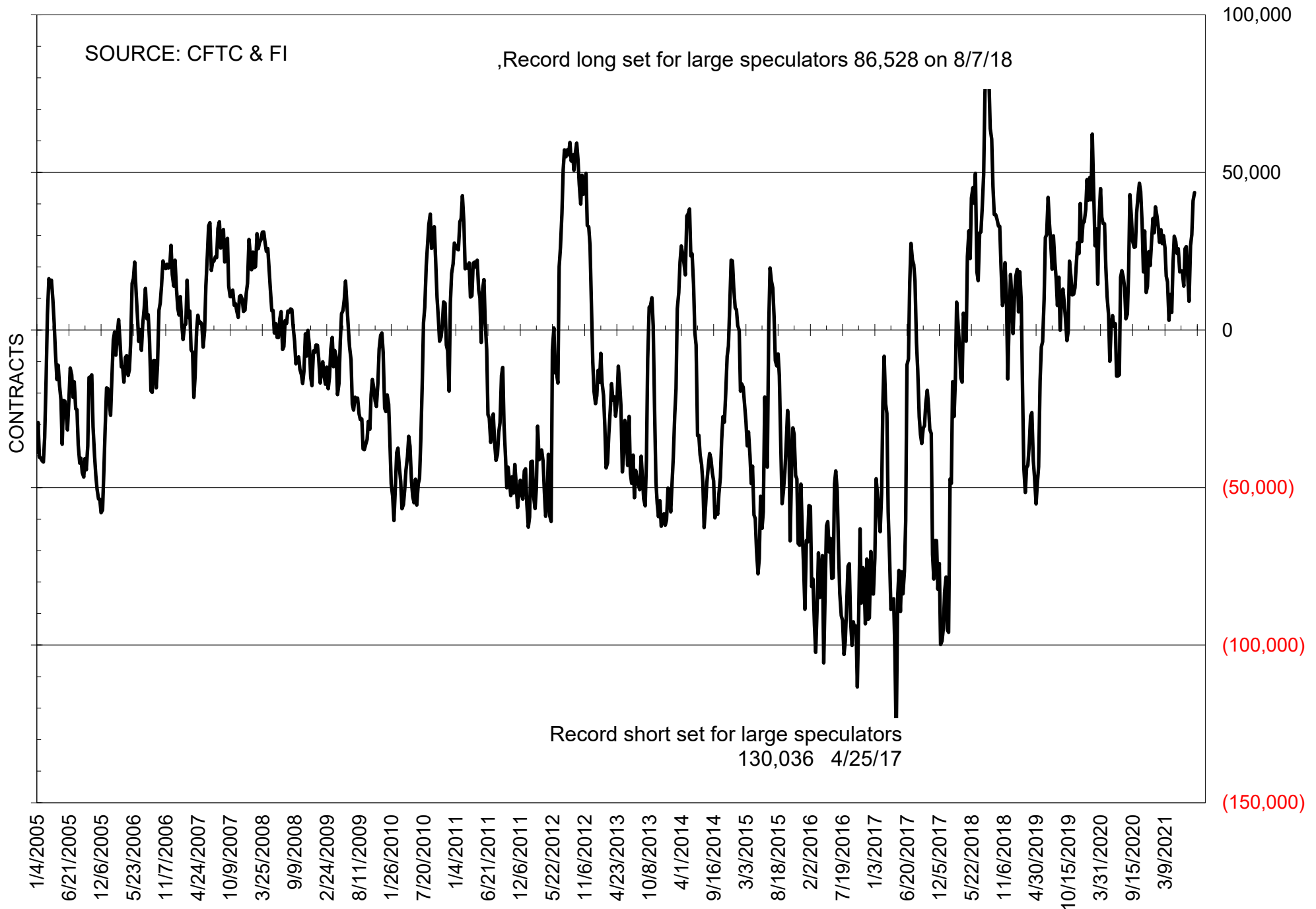
NET POSITION OF FUTURES ONLY LARGE SPECS IN SOYOIL



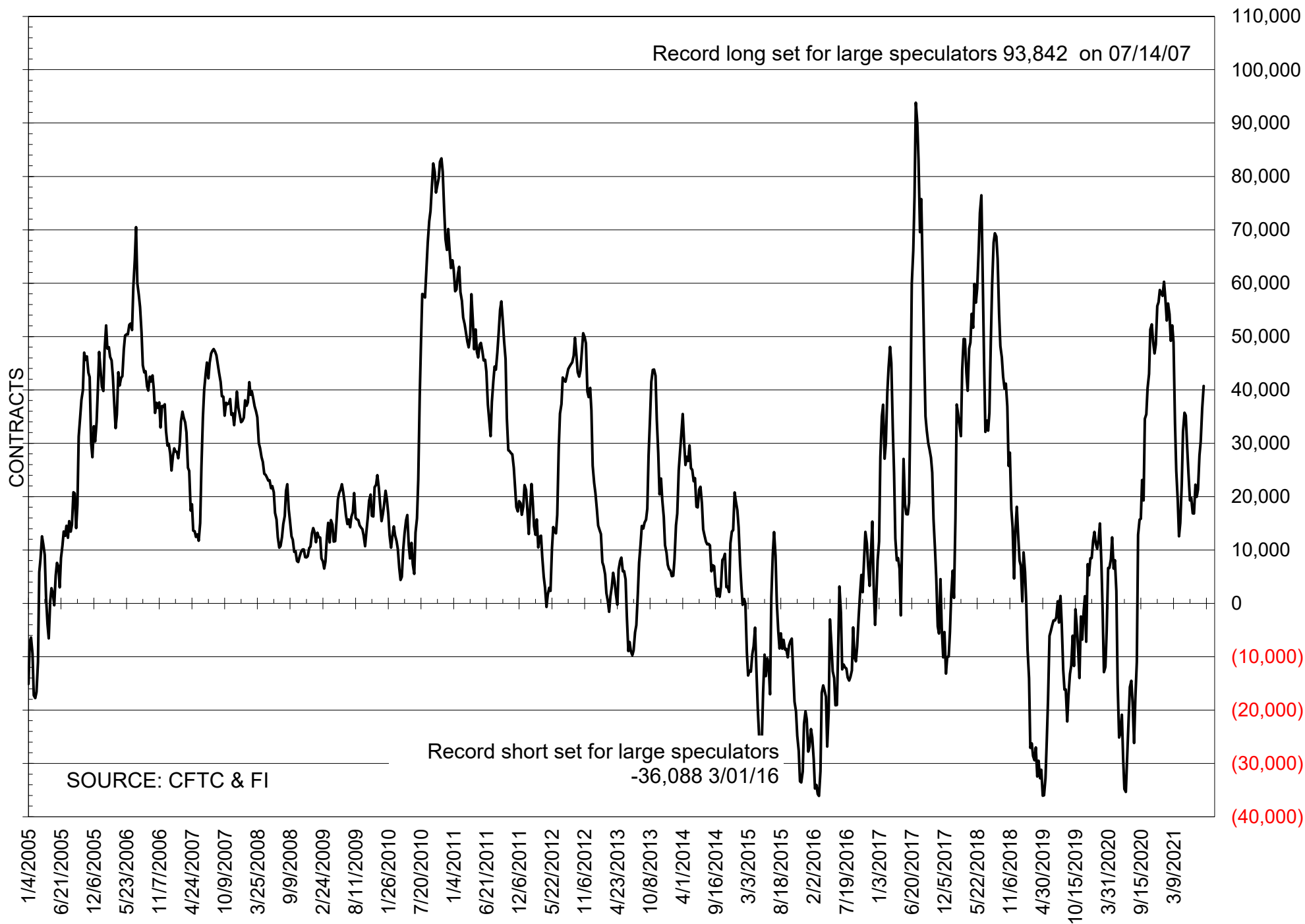
NET POSITION OF LARGE SPECULATORS IN CORN



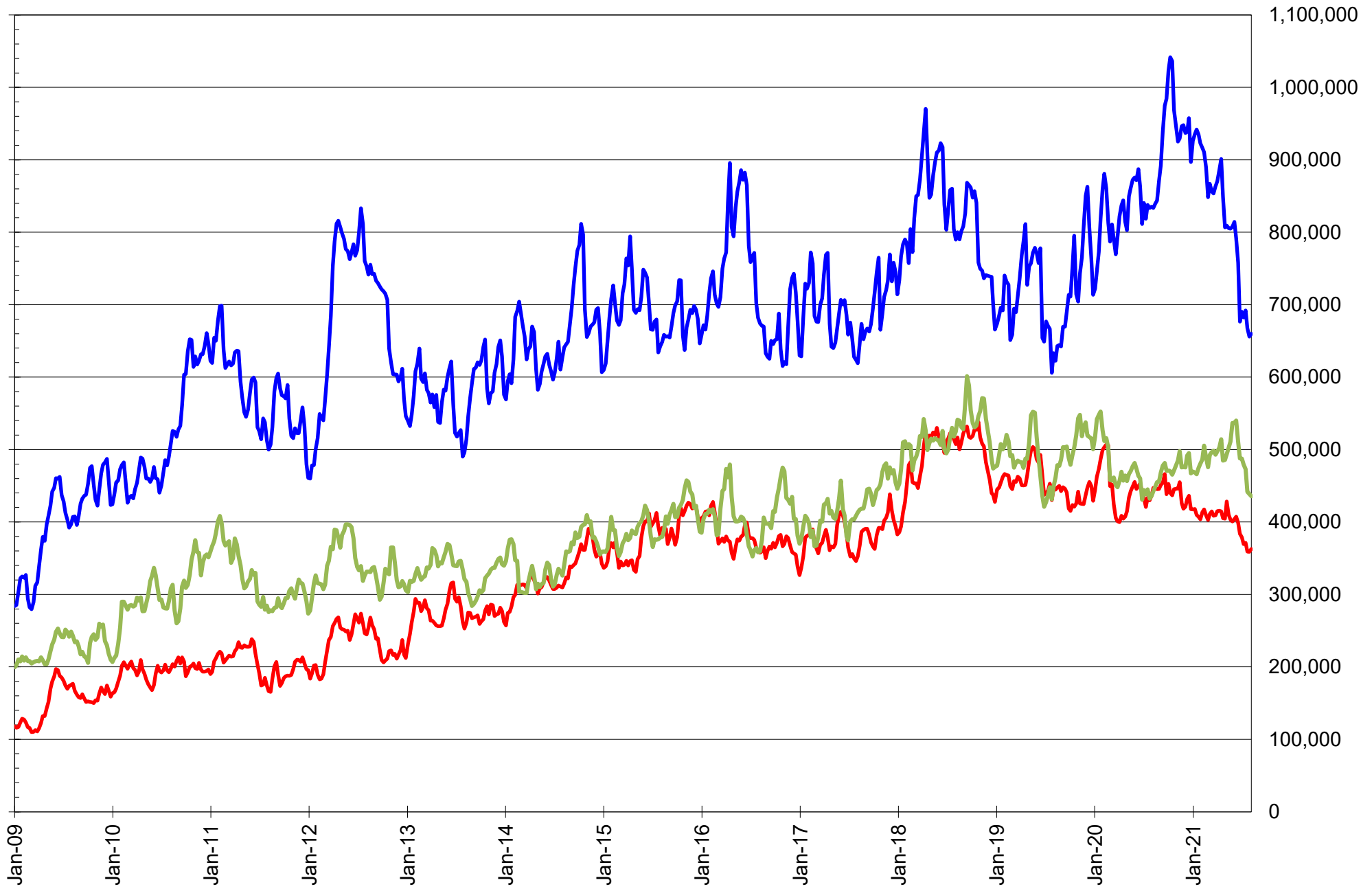
NET POSITION OF FUTURES ONLY LARGE SPECS IN CHICAGO WHEAT



NET POSITION OF LARGE SPECULATORS IN KANSAS CITY WHEAT



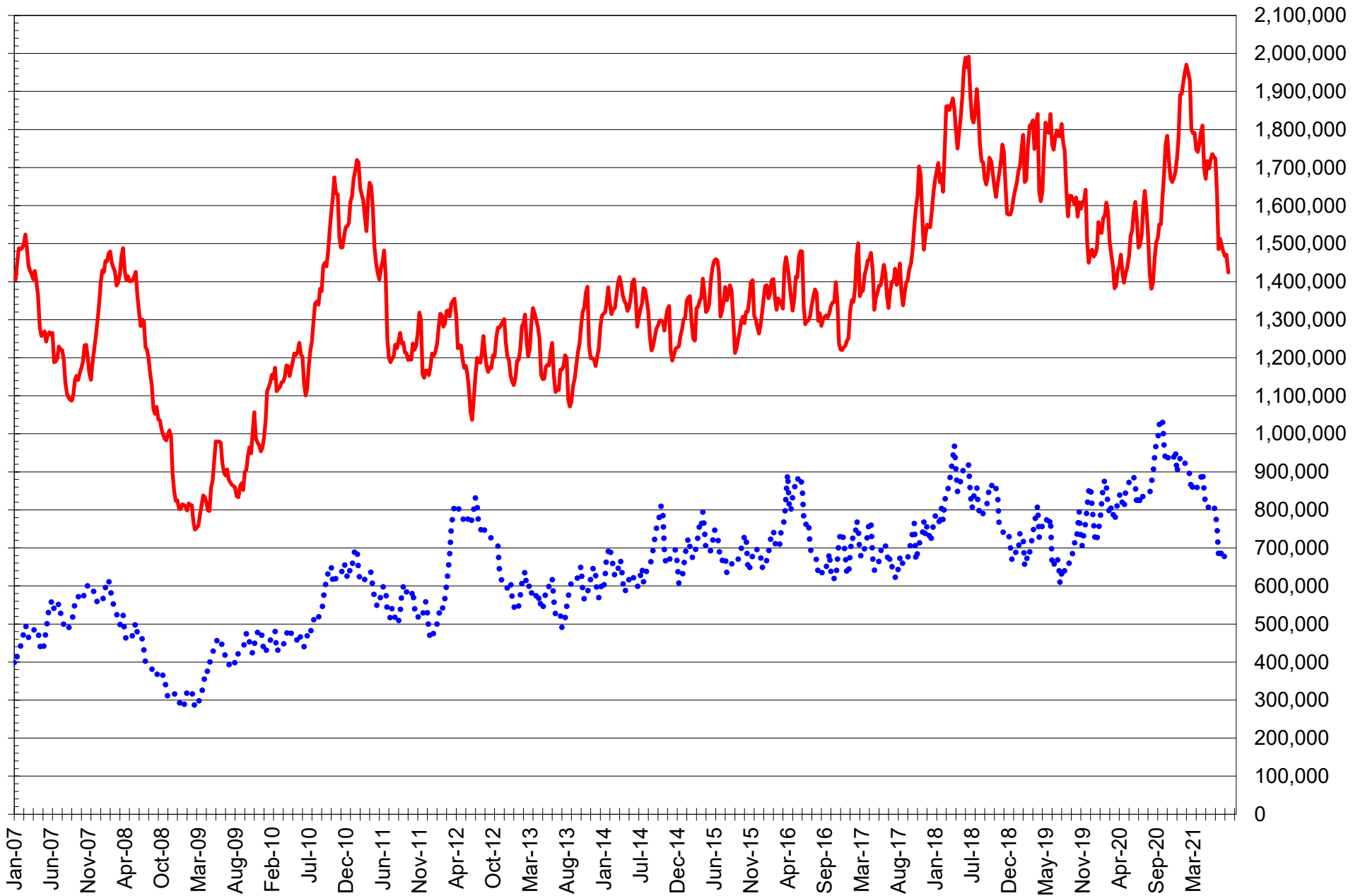
TOTAL OPEN INTEREST IN SOYBEANS, MEAL AND OIL, FUTURES ONLY



SOURCE: CFTC & FI

— SOYBEANS — SOYBEAN MEAL — SOYBEAN OIL

TOTAL OPEN INTEREST IN CORN AND SOYBEANS, FUTURES ONLY



SOURCE: CFTC & FI

— CORN

..... SOYBEANS

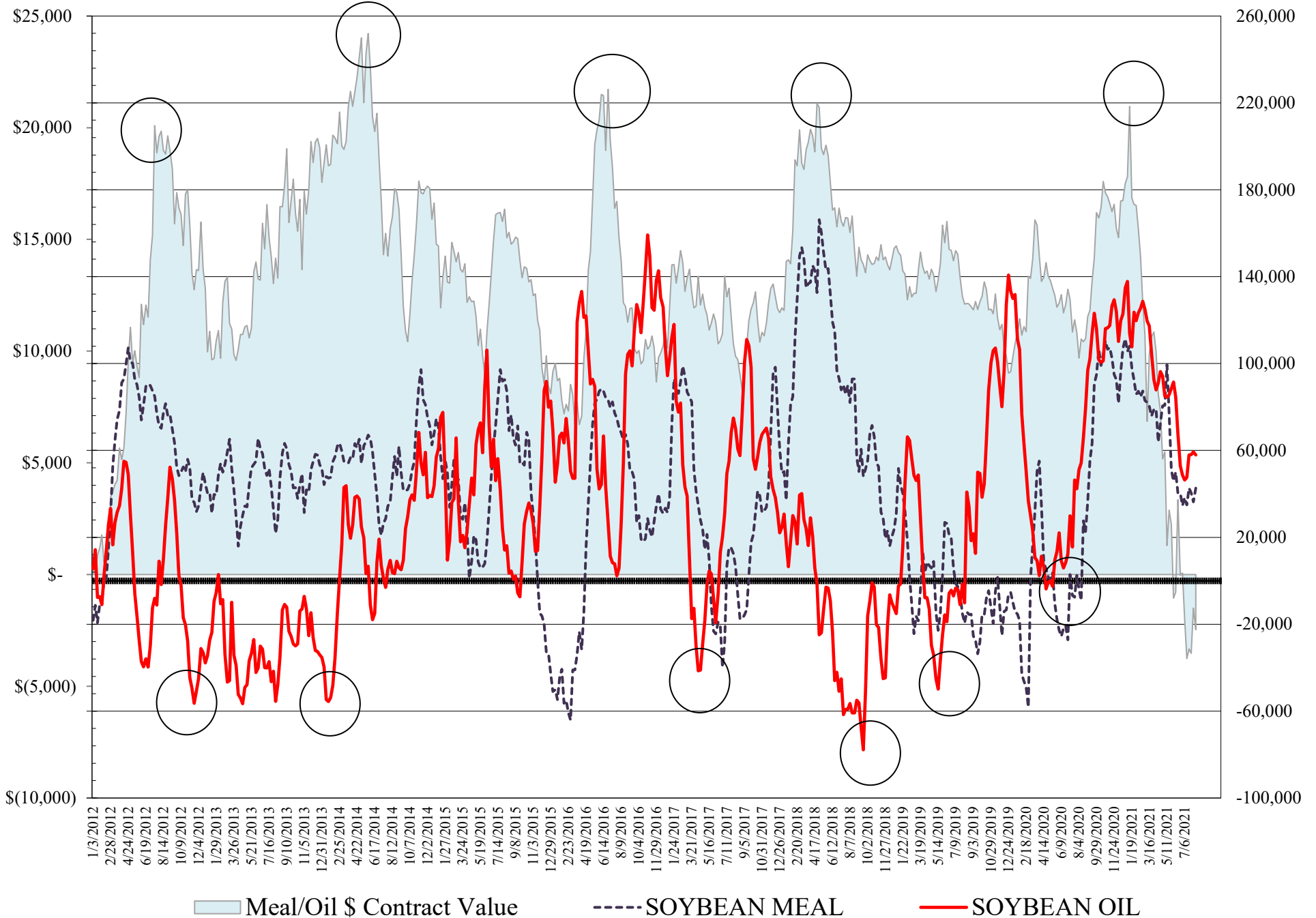
**COMMITMENT OF TRADERS
FUTURES & OPTIONS NET POSITIONS
AS OF 08/10/2021
(IN THOUSAND CONTRACTS)**

	COMMERCIAL				(FUND) NON COMMERCIAL				(SPEC) NON-REPORTABLE			
	10-Aug	3-Aug	27-Jul	20-Jul	10-Aug	3-Aug	27-Jul	20-Jul	10-Aug	3-Aug	27-Jul	20-Jul
	WHEAT											
Chicago	-26.3	-24.6	-12.1	-6.3	38.5	37.4	25.1	20.5	-12.2	-12.8	-13.0	-14.2
Kansas City	-40.5	-35.3	-28.0	-27.1	40.9	36.6	29.3	25.8	-0.3	-1.3	-1.2	1.3
Minneapolis	-25.9	-25.0	-23.5	-23.6	14.8	13.2	10.1	11.3	11.1	11.7	13.4	12.4
All Wheat	-92.8	-84.8	-63.7	-57.1	94.1	87.2	64.5	57.6	-1.4	-2.4	-0.9	-0.5
CORN	-254.4	-256.9	-247.7	-256.8	327.6	323.7	308.5	303.1	-73.2	-66.8	-60.8	-46.3
OATS	-2.0	-1.8	-2.2	-2.3	0.7	0.7	0.7	0.7	1.2	1.1	1.5	1.6
SOYBEANS	-79.3	-70.2	-83.4	-92.6	94.9	84.2	94.9	99.7	-15.6	-14.0	-11.6	-7.1
SOY OIL	-64.2	-63.4	-63.5	-64.9	57.9	59.3	58.0	54.6	6.3	4.1	5.4	10.3
SOY MEAL	-66.8	-58.6	-65.0	-66.0	42.7	36.3	40.5	41.7	24.1	22.3	24.5	24.3

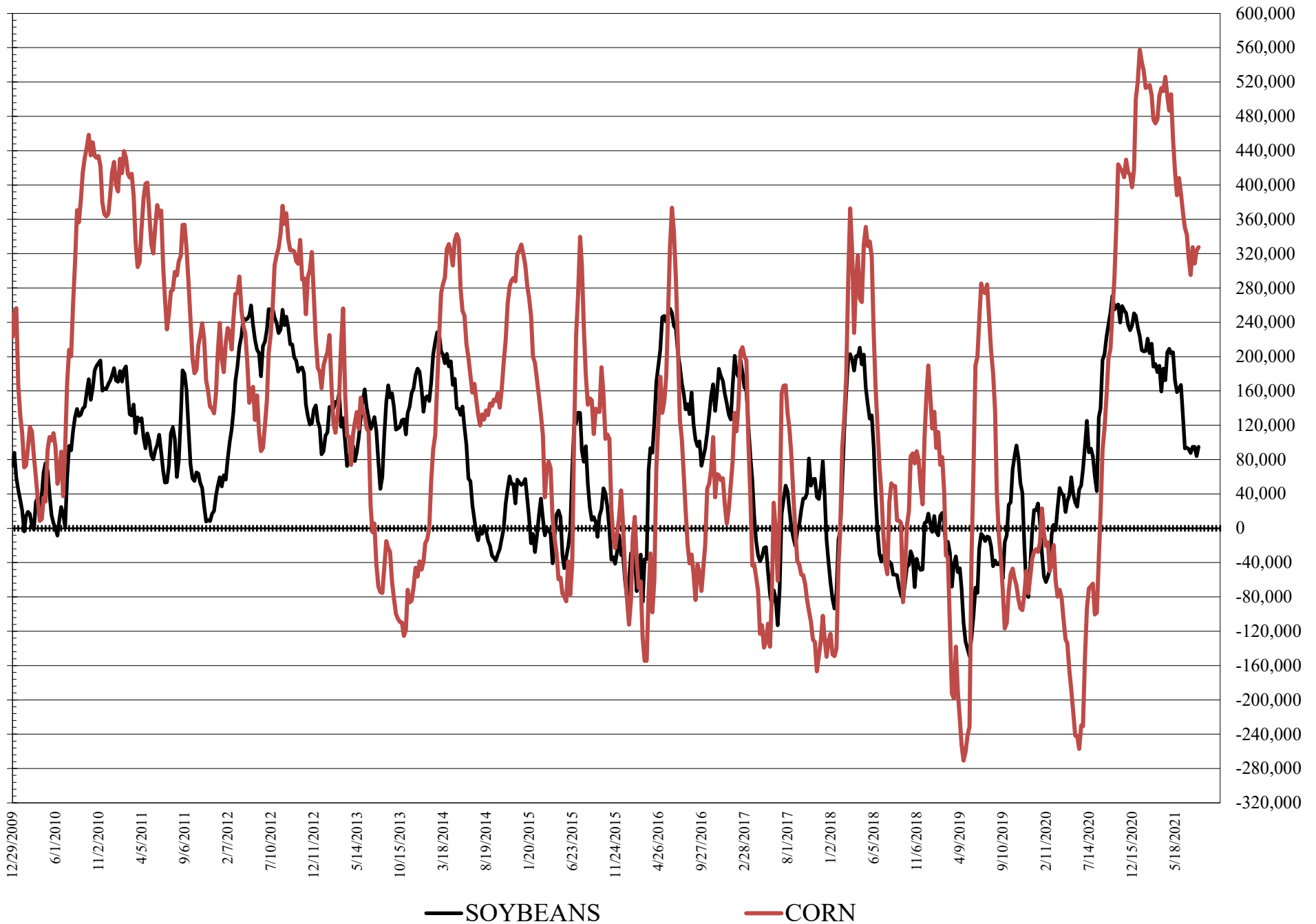
	TOTAL OPEN INTEREST				COMMERCIALS		% HELD BY TRADERS LARGE (FUNDS)		SMALL (NON-REP)	
	10-Aug	3-Aug	27-Jul	20-Jul	LONG	SHORT	LONG	SHORT	LONG	SHORT
	WHEAT									
Chicago	476,360	464,439	424,737	435,316	36%	42%	23%	15%	7%	10%
Kansas City	253,628	247,412	229,649	223,310	37%	53%	31%	15%	9%	9%
Minneapolis	85,925	88,863	86,761	89,546	41%	71%	19%	2%	28%	15%
CORN	1,973,657	1,992,118	1,976,722	2,063,723	43%	56%	20%	3%	9%	12%
OATS	4,699	4,687	4,885	4,813						
SOYBEANS	873,847	867,297	885,088	959,460	47%	56%	18%	7%	7%	8%
SOY OIL	501,924	504,327	508,178	567,643	47%	60%	19%	8%	7%	5%
SOY MEAL	402,359	399,064	398,615	420,801	51%	68%	19%	9%	12%	6%

SOURCE: CFTC & FI

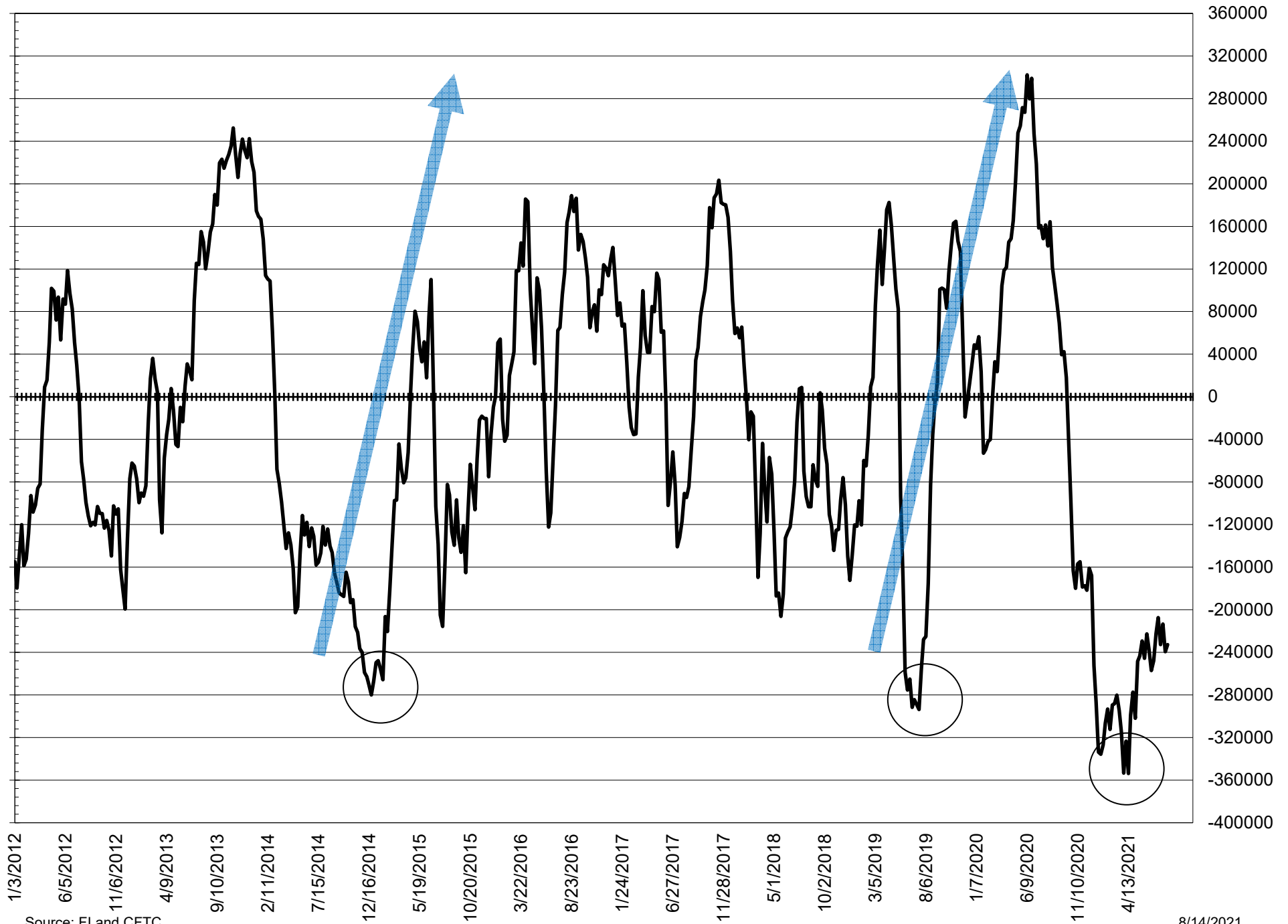
NET POSITION FUTURES AND OPTIONS OF LARGE SPECULATORS IN SOYBEAN MEAL AND SOYBEAN OIL



NET POSITION FUTURES AND OPTIONS OF LARGE SPECULATORS IN SOYBEANS AND CORN



NET POSITION FUTURES AND OPTIONS SPREAD OF LARGE SPECULATORS IN SOYBEANS MINUS CORN



Source: FI and CFTC

8/14/2021

DISAGGREGATED COMMITMENT OF TRADERS
FUTURES ONLY NET POSITIONS
AS OF 08/10/2021
(IN THOUSAND CONTRACTS)

	PRODUCER / MERCHANT / PROCESSOR / USER				(INDEX/ETF) SWAP DEALERS				(CTA/CPO/OTHER UNREGISTERED) MANAGED MONEY				
	10-Aug	3-Aug	27-Jul	20-Jul	10-Aug	3-Aug	27-Jul	20-Jul	10-Aug	3-Aug	27-Jul	20-Jul	
WHEAT													
Chicago	(87.2)	(81.2)	(71.9)	(68.5)	55.8	53.0	54.9	56.2	16.9	12.4	0.2	(5.6)	
Kansas City	(85.4)	(81.4)	(75.4)	(74.7)	45.5	46.7	46.6	46.3	43.7	37.1	30.9	26.6	
Minneapolis	(28.8)	(27.7)	(26.5)	(26.0)	3.2	3.1	3.4	3.1	11.9	10.2	8.3	8.9	
All Wheat	(201.4)	(190.3)	(173.7)	(169.3)	104.4	102.8	104.9	105.6	72.6	59.7	39.4	29.9	
CORN	(502.6)	(514.2)	(513.8)	(527.5)	252.3	262.3	267.5	271.0	246.5	242.7	225.9	218.6	
OATS	(2.0)	(1.9)	(2.3)	(2.4)	0.1	0.1	0.1	0.1	0.3	0.2	0.2	0.1	
SOYBEANS	(189.4)	(184.4)	(193.8)	(204.8)	83.0	82.5	81.5	77.2	86.9	73.0	87.9	88.6	
SOY OIL	(172.5)	(167.7)	(164.9)	(172.4)	102.9	100.8	97.6	97.4	64.1	65.0	61.5	57.1	
SOY MEAL	(158.9)	(151.9)	(157.3)	(161.3)	86.0	86.5	85.3	86.5	25.2	18.2	22.1	21.5	
								Managed % of OI					
								Chicago W		4%	3%	0%	-2%
								Corn		17%	16%	15%	15%
	TOTAL OPEN INTEREST				OTHER REPORTABLE				NON REPORTABLE				
	10-Aug	3-Aug	27-Jul	20-Jul	10-Aug	3-Aug	27-Jul	20-Jul	10-Aug	3-Aug	27-Jul	20-Jul	
WHEAT													
Chicago	382,959	373,529	348,122	341,070	26.7	28.5	30.0	32.3	(12.2)	(12.8)	(13.2)	(14.5)	
Kansas City	230,837	225,807	213,937	203,364	(3.0)	(0.5)	(0.5)	1.1	(0.8)	(1.9)	(1.6)	0.7	
Minneapolis	78,501	81,057	79,620	80,312	3.2	3.6	2.2	2.5	10.5	10.9	12.6	11.5	
All Wheat	692,297	680,393	641,679	624,746	26.9	31.5	31.7	36.0	(2.4)	(3.8)	(2.2)	(2.2)	
CORN	1,424,121	1,471,063	1,466,666	1,478,051	75.1	75.4	80.7	93.0	(71.3)	(66.1)	(60.4)	(55.0)	
OATS	4,485	4,473	4,667	4,587	0.4	0.4	0.4	0.5	1.3	1.1	1.5	1.6	
SOYBEANS	660,007	655,874	667,567	692,028	35.5	42.8	37.7	49.1	(15.9)	(13.9)	(13.3)	(10.1)	
SOY OIL	435,486	438,467	441,669	473,029	(0.7)	(2.2)	0.4	7.8	6.2	4.1	5.4	10.2	
SOY MEAL	362,641	358,871	359,223	371,080	27.6	28.9	29.4	33.4	20.1	18.4	20.5	20.0	

SOURCE: CFTC & FI

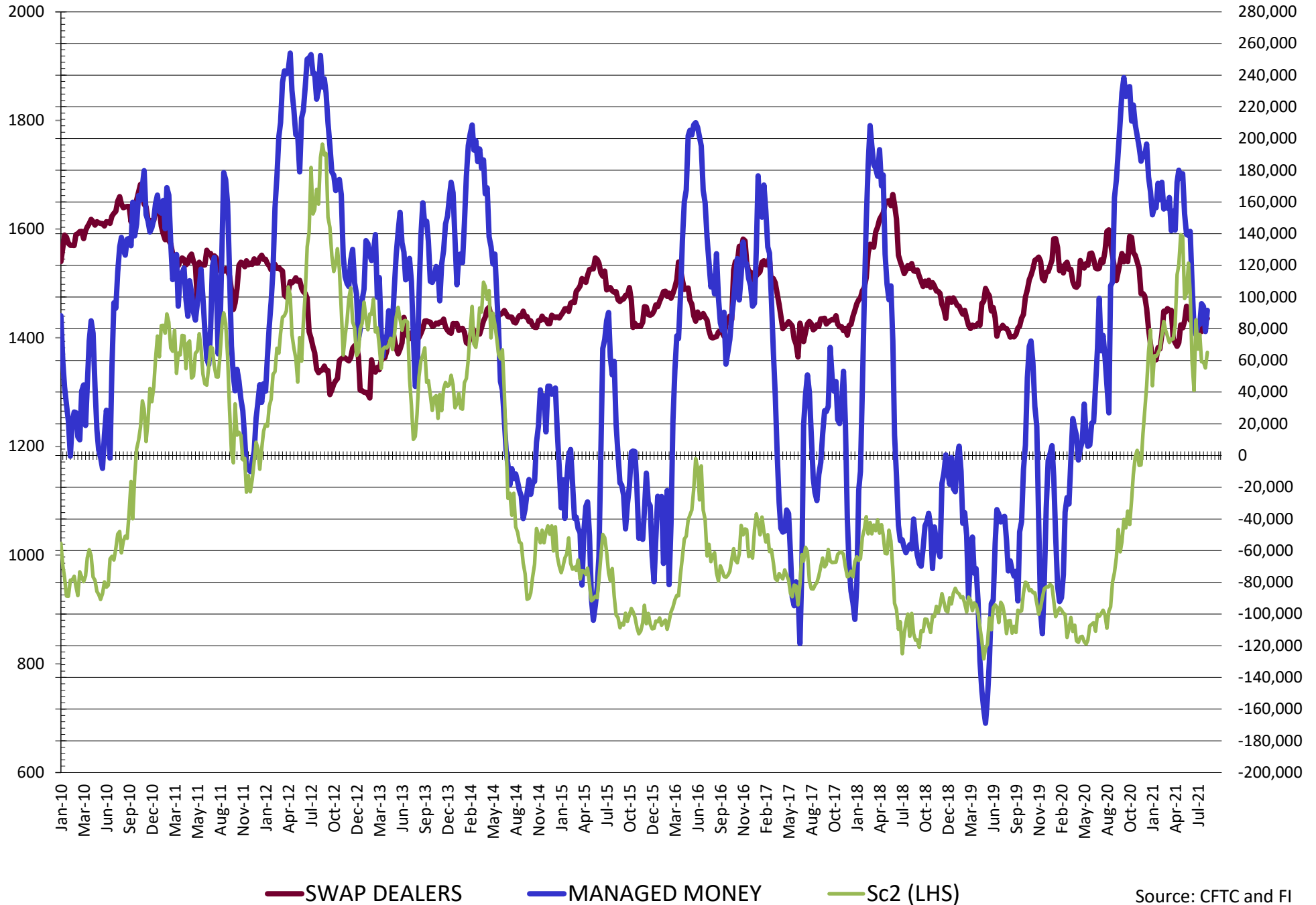
8/14/2021

**DISAGGREGATED COMMITMENT OF TRADERS
FUTURES & OPTIONS NET POSITIONS
AS OF 08/10/2021
(IN THOUSAND CONTRACTS)**

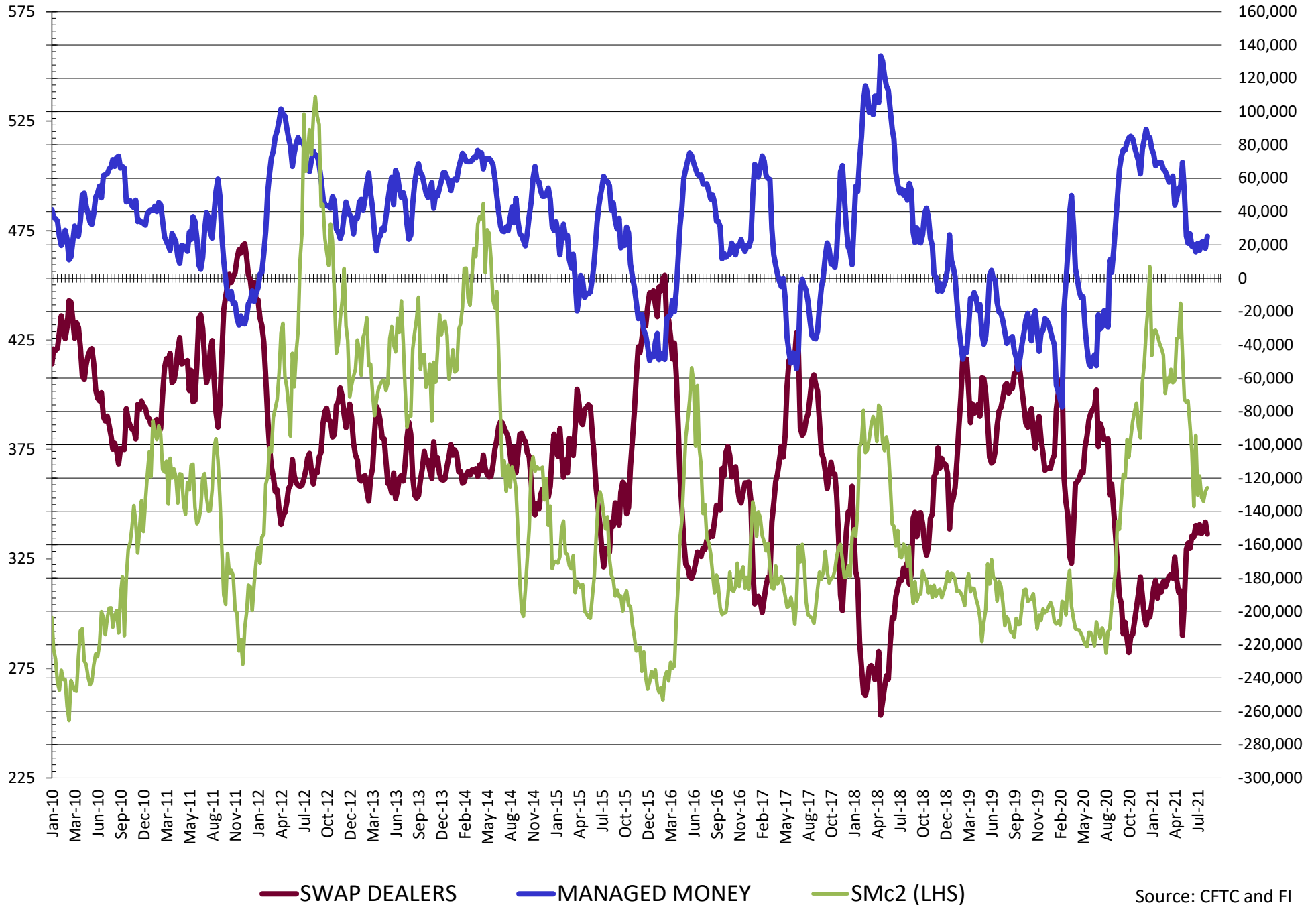
	PRODUCER / MERCHANT / PROCESSOR / USER				(INDEX/ETF) SWAP DEALERS				(CTA/CPO/OTHER UNREGISTERED) MANAGED MONEY			
	10-Aug	3-Aug	27-Jul	20-Jul	10-Aug	3-Aug	27-Jul	20-Jul	10-Aug	3-Aug	27-Jul	20-Jul
	WHEAT											
Chicago	(83.8)	(78.8)	(68.1)	(63.3)	57.4	54.2	56.0	57.0	19.1	15.3	3.1	(3.8)
Kansas City	(85.8)	(81.8)	(74.6)	(73.3)	45.3	46.5	46.5	46.2	44.8	38.2	31.8	27.7
Minneapolis	(29.0)	(28.0)	(26.8)	(26.0)	3.0	3.0	3.3	2.4	11.9	10.2	8.3	8.9
All Wheat	(198.5)	(188.5)	(169.4)	(162.6)	105.7	103.7	105.8	105.5	75.8	63.7	43.2	32.8
CORN	(486.5)	(497.5)	(495.1)	(504.2)	232.0	240.7	247.4	247.4	254.0	246.5	228.0	223.3
OATS	(2.1)	(1.9)	(2.3)	(2.4)	0.1	0.1	0.1	0.1	0.3	0.2	0.2	0.1
SOYBEANS	(165.8)	(156.8)	(167.7)	(170.8)	86.5	86.6	84.4	78.2	91.6	78.3	94.1	95.9
SOY OIL	(165.3)	(162.3)	(159.2)	(170.2)	101.1	98.9	95.7	105.3	63.5	64.7	61.3	57.1
SOY MEAL	(153.5)	(146.4)	(151.2)	(153.3)	86.8	87.8	86.1	87.3	25.2	17.9	22.2	21.5
	TOTAL				OTHER REPORTABLE				NON REPORTABLE			
	OPEN INTEREST				SWAP DEALERS				MANAGED MONEY			
	10-Aug	3-Aug	27-Jul	20-Jul	10-Aug	3-Aug	27-Jul	20-Jul	10-Aug	3-Aug	27-Jul	20-Jul
WHEAT												
Chicago	476,360	464,439	424,737	435,316	19.4	22.0	22.1	24.2	(12.2)	(12.8)	(13.0)	(14.2)
Kansas City	253,628	247,412	229,649	223,310	(3.9)	(1.6)	(2.5)	(1.9)	(0.3)	(1.3)	(1.2)	1.3
Minneapolis	85,925	88,863	86,761	89,546	2.9	3.1	1.8	2.4	11.1	11.7	13.4	12.4
All Wheat	815,913	800,714	741,147	748,172	18.3	23.5	21.4	24.8	(1.4)	(2.4)	(0.9)	(0.5)
CORN	1,973,657	1,992,118	1,976,722	2,063,723	73.6	77.2	80.5	79.8	(73.2)	(66.8)	(66.8)	(66.8)
OATS	4,699	4,687	4,885	4,813	0.4	0.5	0.5	0.5	1.2	1.1	1.5	1.6
SOYBEANS	873,847	867,297	885,088	959,460	3.3	5.9	0.9	3.8	(15.6)	(14.0)	(11.6)	(7.1)
SOY OIL	501,924	504,327	508,178	567,643	(5.7)	(5.4)	(3.2)	(2.6)	6.3	4.1	5.4	10.3
SOY MEAL	402,359	399,064	398,615	420,801	17.4	18.4	18.3	20.2	24.1	22.3	24.5	24.3

SOURCE: CFTC & FI

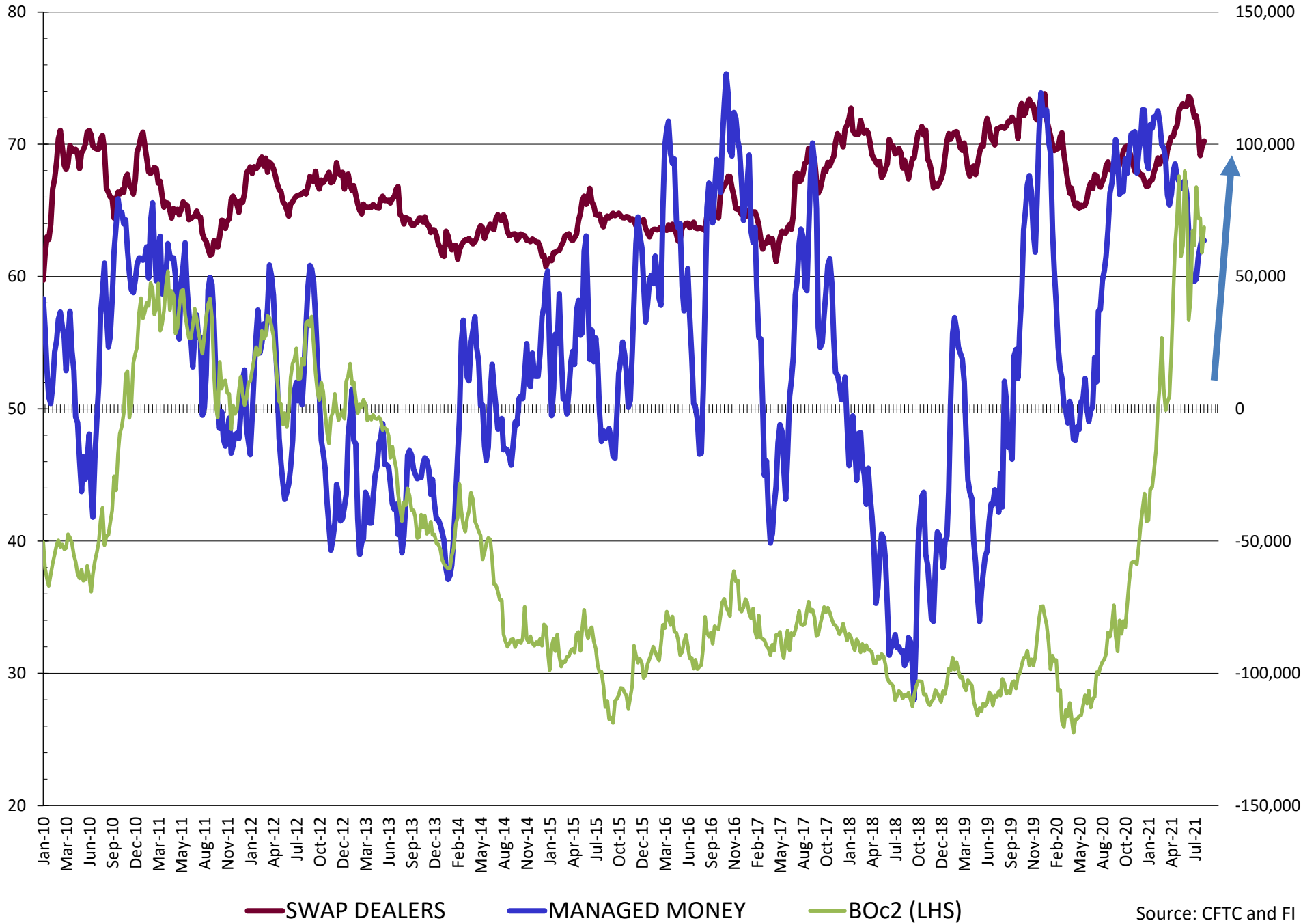
NET POSITION FUTURES AND OPTIONS OF SWAP AND MANAGED FUNDS IN SOYBEANS



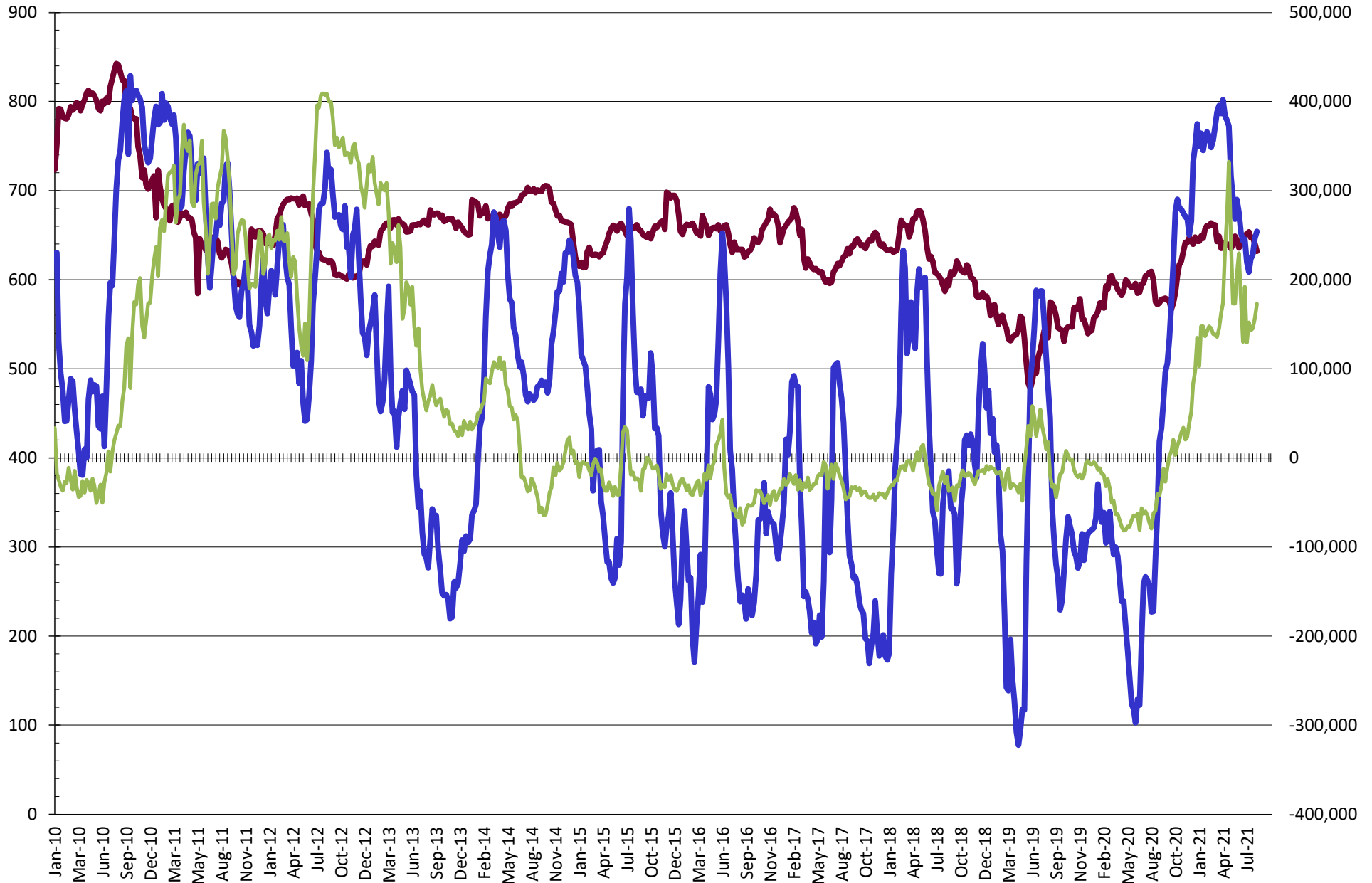
NET POSITION FUTURES AND OPTIONS OF SWAP AND MANAGED FUNDS IN SOYBEAN MEAL



NET POSITION FUTURES AND OPTIONS OF SWAP AND MANAGED FUNDS IN SOYBEAN OIL

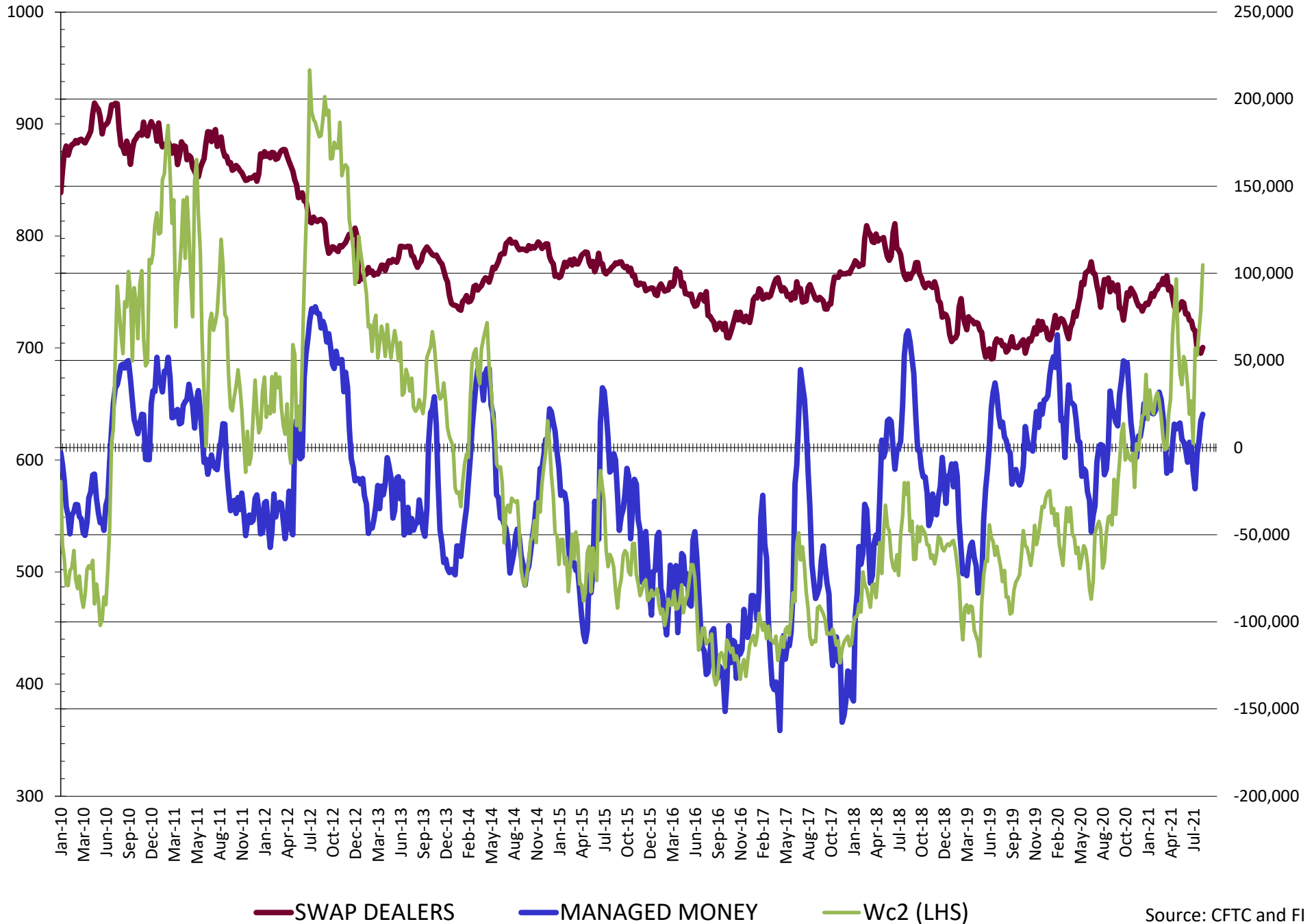


NET POSITION FUTURES AND OPTIONS OF SWAP AND MANAGED FUNDS IN CORN

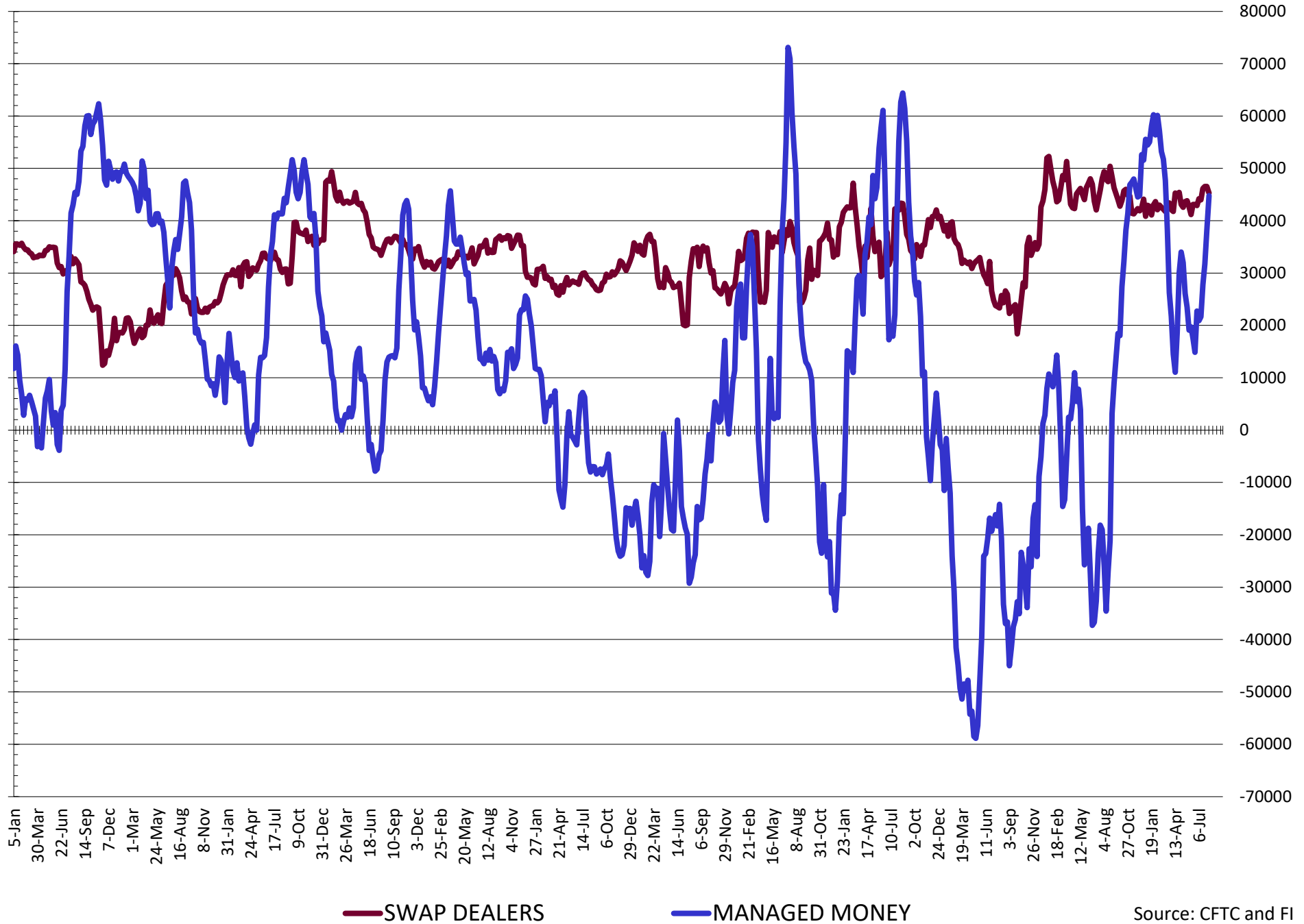


— SWAP DEALERS
 — MANAGED MONEY
 — Cc2 (LHS)

NET POSITION FUTURES AND OPTIONS OF SWAP AND MANAGED FUNDS IN CHICAGO WHEAT

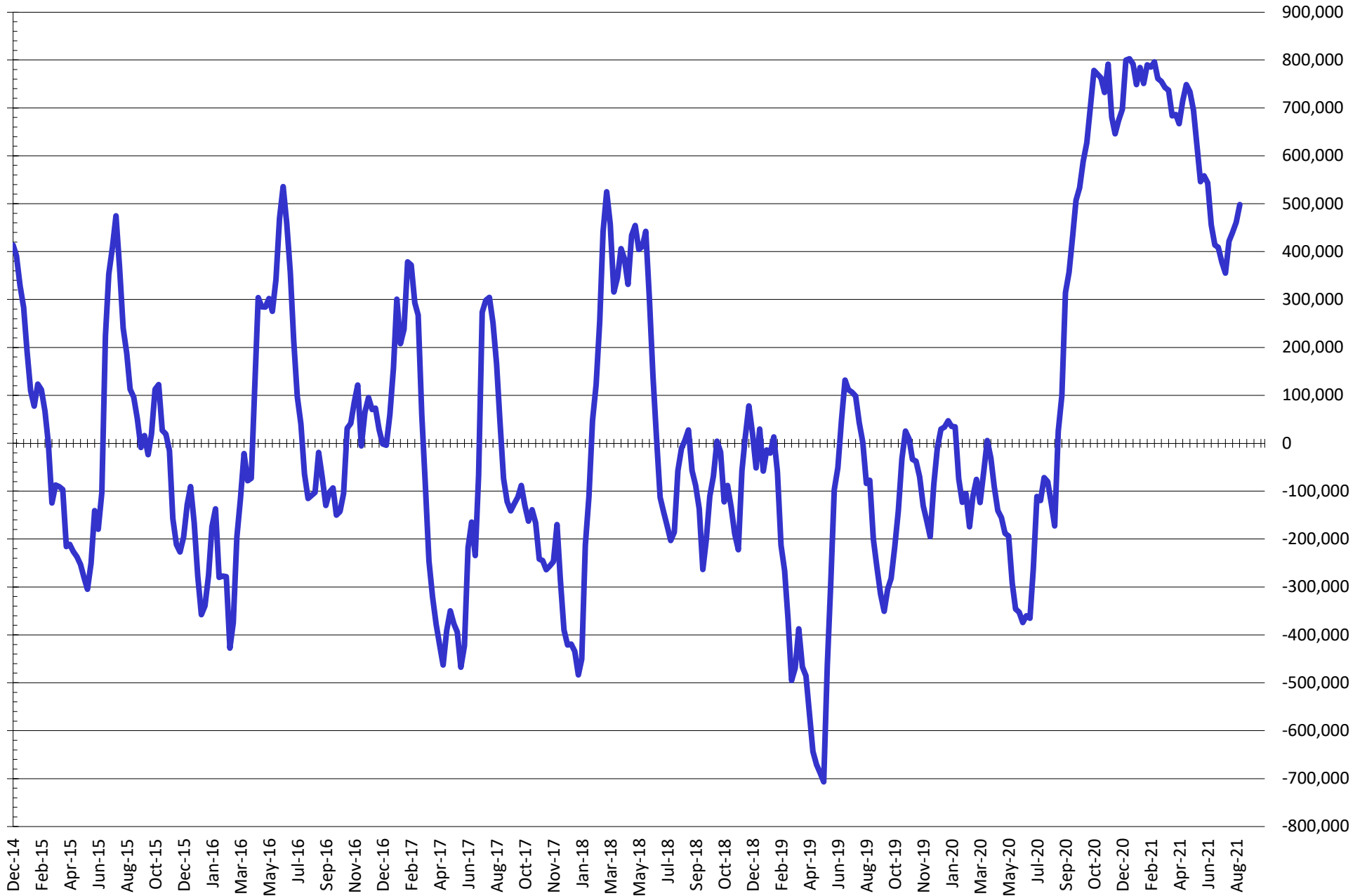


NET POSITION FUTURES AND OPTIONS OF SWAP AND MANAGED FUNDS IN KANSAS WHEAT



Source: CFTC and FI
8/14/2021

NET POSITION FUTURES AND OPTIONS OF SWAP AND MANAGED FUNDS IN COMBINED SRW, HRW, CORN, SOYBEANS, SOYMEAL AND SOYOIL



— Net Managed Money

Source: CFTC and FI
8/14/2021

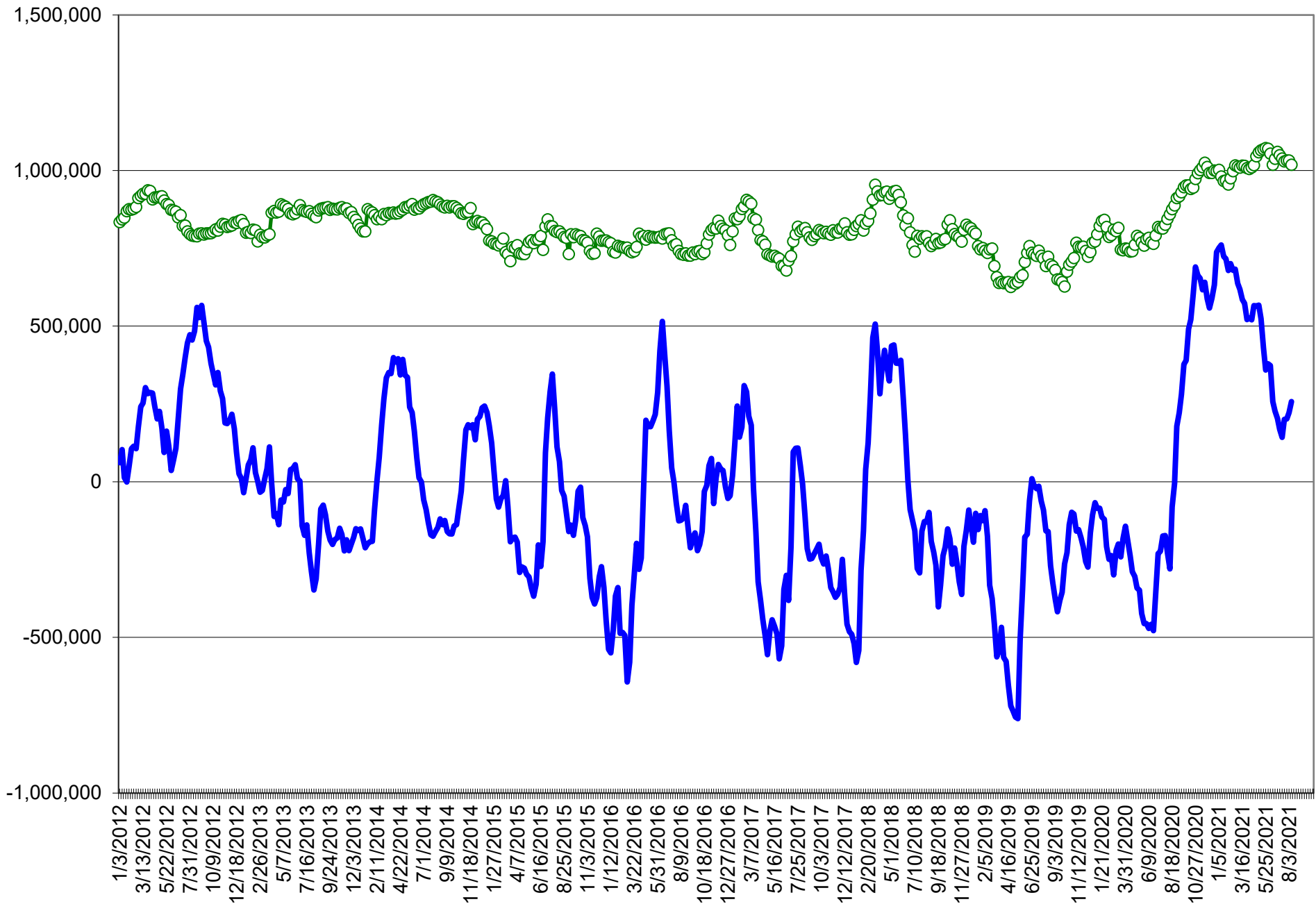
COMMITMENT OF TRADERS
FUTURES & OPTIONS NET POSITIONS (INDEX BROKEN OUT)
AS OF 08/10/2021
(IN THOUSAND CONTRACTS)

	COMMERCIAL				(FUND) NON COMMERCIAL				(SPEC) NON-REPORTABLE			
	10-Aug	3-Aug	27-Jul	20-Jul	10-Aug	3-Aug	27-Jul	20-Jul	10-Aug	3-Aug	27-Jul	20-Jul
	WHEAT											
Chicago	(116.2)	(111.2)	(99.9)	(96.0)	(10.9)	(15.3)	(29.3)	(32.7)	(12.2)	(12.8)	(13.0)	(14.2)
Kansas City	(89.2)	(85.9)	(77.6)	(77.1)	21.9	19.6	13.7	9.8	(0.3)	(1.3)	(1.2)	1.3
Minneapolis	-	-	-	-	-	-	-	-	-	-	-	-
All Wheat	(205.4)	(197.0)	(177.5)	(173.1)	11.0	4.2	(15.5)	(22.9)	(12.5)	(14.1)	(14.2)	(12.9)
CORN	(521.0)	(530.6)	(525.8)	(535.1)	173.7	166.8	154.4	151.6	(73.2)	(66.8)	(60.8)	(46.3)
OATS	-	-	-	-	-	-	-	-	-	-	-	-
SOYBEANS	(189.3)	(178.6)	(190.2)	(197.8)	33.1	20.1	29.3	35.4	(15.6)	(14.0)	(11.6)	(7.1)
SOY OIL	(152.7)	(150.2)	(149.0)	(156.1)	29.5	28.8	27.5	28.6	6.3	4.1	5.4	10.3
SOY MEAL	(137.0)	(128.9)	(134.5)	(135.6)	10.1	1.7	6.2	7.8	24.1	22.3	24.5	24.3

	TOTAL OPEN INTEREST				(INDEX) COMMERCIAL INDEX TRADERS				(INDEX) % NET OF TOTAL OPEN INTEREST			
	10-Aug	3-Aug	27-Jul	20-Jul	10-Aug	3-Aug	27-Jul	20-Jul	10-Aug	3-Aug	27-Jul	20-Jul
	WHEAT											
Chicago	476,360	464,439	424,737	435,316	139.3	139.3	142.1	142.9	29.2%	30.0%	33.5%	32.8%
Kansas City	253,628	247,412	229,649	223,310	67.7	67.6	65.1	66.0	26.7%	27.3%	28.4%	29.6%
Minneapolis	-	-	-	-	-	-	-	-	-	-	-	-
All Wheat	729,988	711,851	654,386	658,626	206.9	206.9	207.3	208.9	28.3%	29.1%	31.7%	31.7%
CORN	1,973,657	1,992,118	1,976,722	2,063,723	420.5	430.6	432.1	429.8	21.3%	21.6%	21.9%	20.8%
OATS	-	-	-	-	-	-	-	-	-	-	-	-
SOYBEANS	873,847	867,297	885,088	959,460	171.8	172.6	172.5	169.5	19.7%	19.9%	19.5%	17.7%
SOY OIL	501,924	504,327	508,178	567,643	116.9	117.3	116.1	117.2	23.3%	23.3%	22.8%	20.6%
SOY MEAL	402,359	399,064	398,615	420,801	102.7	104.9	103.7	103.4	25.5%	26.3%	26.0%	24.6%

SOURCE: CFTC & FI

NET POSITION FUTURES AND OPTIONS OF SPECULATORS AND INDEX FUNDS IN COMBINED SRW, HRW, CORN, SOYBEANS, SOYMEAL AND SOYOIL



Source: CFTC and FI

○ Net Index

— Net Speculator