



Good morning.

WASHINGTON, August 30, 2021- Private exporters reported to the U.S. Department of Agriculture export sales of 256,000 metric tons of soybeans for delivery to China during the 2021/2022 marketing year.

Hurricane Ida is disrupting Gulf grain operations, collapsing some of the nearby spreads. USDA export inspections were overall poor.

Statistics Canada Production - Aug 30 release

	Actual	Average estimate	Lowest estimate	Highest estimate	Aug-Ave.	Statscan 2020	YOY
All wheat	22.948	22.600	18.900	25.400	0.3	35.183	(12.2)
Spring wheat	16.102	15.900	12.800	17.900	0.2	25.842	(9.7)
Durum	3.998	4.100	3.300	5.400	(0.1)	6.571	(2.6)
Canola	14.749	14.100	11.400	16.200	0.6	19.485	(4.7)
Oats	3.070	3.000	2.400	3.300	0.1	4.576	(1.5)
Barley	7.836	7.400	6.200	10.100	0.4	10.741	(2.9)
Lentils	1.979	2.100	1.600	2.600	(0.1)	2.868	(0.9)
Flax	0.416	0.448	0.344	0.560	(0.0)	0.578	(0.2)
Peas	2.627	2.900	2.400	3.800	(0.3)	4.594	(2.0)

Source: StatsCan, Reuters, and FI

USDA Crop Progress Estimates

As of: 8/29/2021

Good/Excellent Conditions	FI Estimate	Last week	Year Ago	5-year Average*	Change
Corn Conditions	60	60	62	65	0
Soybean Conditions	57	56	66	64	1

	FI Estimate	Last Week	Year Ago	5-year Average*	
Spring Wheat Harvested	90	77	66	67	13

Source: FI, USDA, NASS *Conditions, Harvest and Planting progress for LY and 5-YR best guess

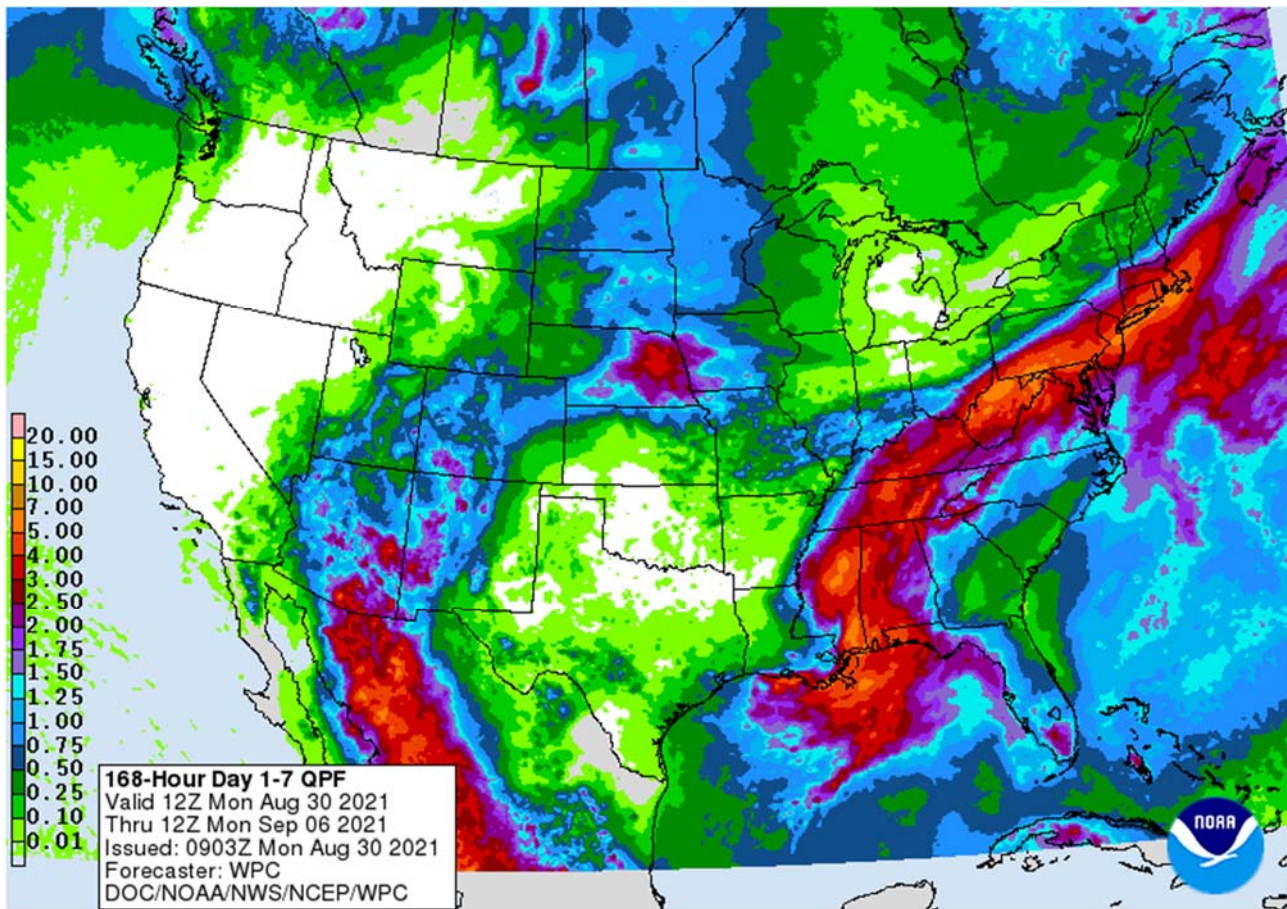
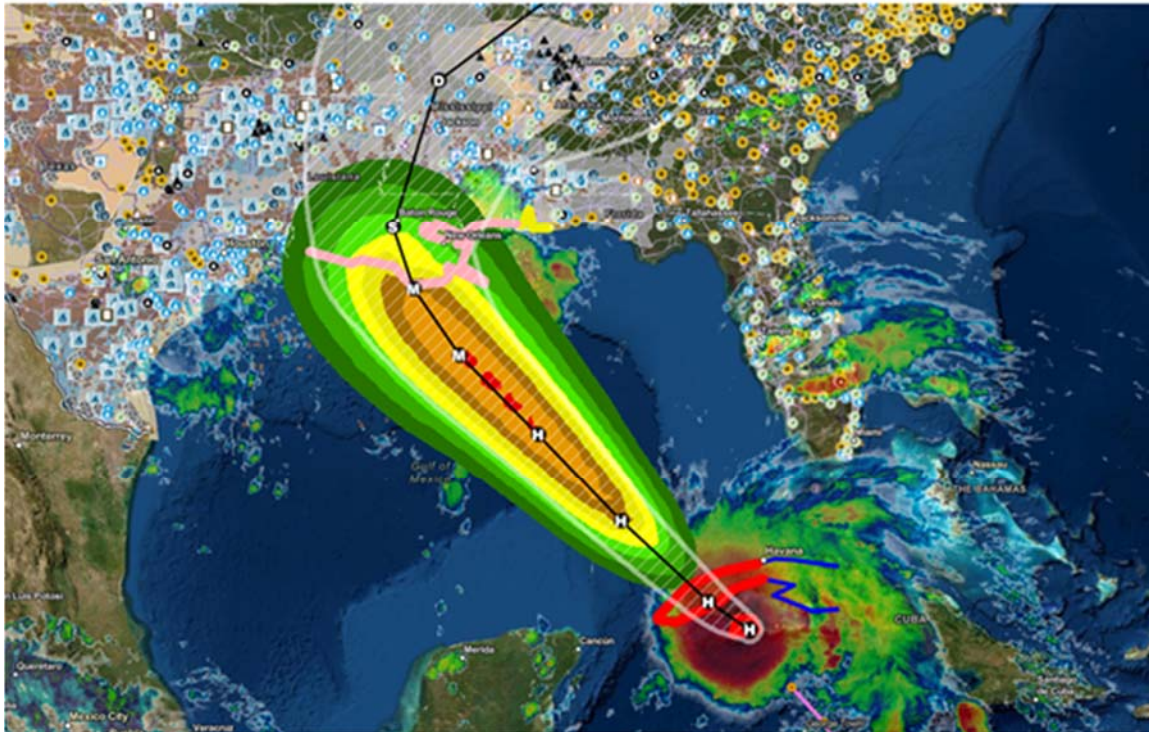
Weather

Terry Reilly Grain Research

Futures International | One Lincoln Center | 18 W 140 Butterfield Rd. | Oakbrook Terrace, IL 60181

W: 312.604.1366 | treilly@futures-int.com

Hurricane_Ide



Terry Reilly Grain Research

Futures International | One Lincoln Center | 18 W 140 Butterfield Rd. | Oakbrook Terrace, IL 60181

W: 312.604.1366 | treilly@futures-int.com

WORLD WEATHER INC.

WORLD WEATHER HIGHLIGHTS FOR MONDAY, AUGUST 30, 2021

- Frost and freezes occurred this morning in northern Russia, but the impact should have been low.
 - More of the same will occur over the next few days.
- Frost and freezes also occurred Saturday in eastern New South Wales, Australia.
- Argentina is expecting a few waves of rain this weekend into next week that will benefit future wheat development.
- Brazil will stay dry in this coming week north of central Parana while rain falls to the south.
- Eastern Australia wheat, barley and canola crop areas may get some needed rain Friday through the weekend benefiting Queensland crops most of all since they will be reproducing soon.
- Northwestern India will have opportunities for rain over the next ten days, especially in Gujarat where some crop improvement is expected.
 - The heart of India will remain plenty moist.
- China will continue to see periods of locally heavy rain between the Yellow and Yangtze Rivers
- There is a chance for rain in parts of eastern Ukraine and Russia's Volga Basin this week as areas to the east are still dry biased. Recent rain in southeastern Europe helped ease some dryness there.
- Hurricane Ida brought devastating wind and rain to southeastern Louisiana
 - Sugarcane was negatively impacted in eastern production areas
 - The bulk of cane produced in central and western parts of southern Louisiana was not seriously harmed
 - Flooding has been significant in the New Orleans area and from Baton Rouge to Houma
- Tropical Storm Ida will be downgraded further to depression status later today over southern Mississippi
 - Heavy rain and flooding will be the biggest impact from Mississippi to West Virginia
 - Crop damage is expected to be low, although flooding and property damage is still expected to be significant in southern and central Mississippi and a part of western Alabama
 - Flooding from the storm will also be significant in eastern Tennessee and from West Virginia into Pennsylvania and southern New England later this week
- Canada's southwestern Prairies will experience restricted rainfall over the coming week to ten days
- Southern U.S. Plains will be dry this week except for a part of interior southern Texas
- Rain in the northern Plains and a part of the western Corn Belt this week will maintain good or improving late season crop conditions
- Western and southern Mexico will stay wet this week
 - Tropical storm Nora produced excessive rain in several southwestern Mexico states during the weekend with one location in Colima reporting more than 11.00 inches through Sunday morning

Source: World Weather Inc.

Bloomberg Ag Calendar

Monday, Aug. 30:

- Canada's StatsCan releases production data for wheat, durum, canola, barley and soybeans
- USDA export inspections - corn, soybeans, wheat, 11am
- U.S. crop conditions - corn, cotton, soybeans; spring wheat harvest, 4pm
- Ivory Coast cocoa arrivals
- U.K. public holiday: agriculture futures contracts closed on ICE Futures Europe

Tuesday, Aug. 31:

- U.S. agricultural prices paid and received
- EU weekly grain, oilseed import and export data
- HOLIDAY: Malaysia

Wednesday, Sept. 1:

Terry Reilly Grain Research

Futures International | One Lincoln Center | 18 W 140 Butterfield Rd. | Oakbrook Terrace, IL 60181

W: 312.604.1366 | treilly@futures-int.com

- EIA weekly U.S. ethanol inventories, production
- Australia Commodity Index
- U.S. DDGS production, corn for ethanol, 3pm
- Malaysia August palm oil export data (tentative)
- USDA soybean crush, 3pm

Thursday, Sept. 2:

- FAO World Food Price Index
- USDA weekly crop net-export sales for corn, soybeans, wheat, cotton, pork, beef, 8:30am
- Port of Rouen data on French grain exports
- HOLIDAY: Vietnam

Friday, Sept. 3:

- ICE Futures Europe weekly commitments of traders report (6:30pm London)
- CFTC commitments of traders weekly report on positions for various U.S. futures and options, 3:30pm
- FranceAgriMer weekly update on crop conditions
- HOLIDAY: Vietnam

Source: Bloomberg and FI

FND delivery estimates:

CBOT Deliveries and Registrations				
	Deliveries	FI FND Est.	Reg.	Reg. Change
Soybeans	NA	0	0	0
Soybean Meal	NA	0	1	0
Soybean Oil	NA	0	249	0
Corn	NA	0	0	0
Oats	NA	0	0	0
Chi. Wheat	NA	0-75	0	0
KC Wheat	NA	50-150	1,288	0
Rice	NA	100-250	803	0
Ethanol	NA	0	0	0
MN Wheat	NA	50-200		

Chicago Wheat

CBOT Open Interest

CBOT Product			Prompt OI	Change	Total Open Interest*	Change
<i>Soybeans</i>	<i>Sv1</i>	<i>Nov 21</i>	372,994	433	671,420	(6,805)
<i>Soy Oil</i>	<i>BOv1</i>	<i>Dec 21</i>	171,291	(519)	413,192	(5,191)
<i>Soy Meal</i>	<i>SMv1</i>	<i>Dec 21</i>	166,449	1,389	350,839	(4,034)
<i>Corn</i>	<i>Cv1</i>	<i>Dec 21</i>	786,443	1,228	1,401,138	(31,309)
<i>Oats</i>	<i>Oc1</i>	<i>Sep 21</i>	91	(33)	4,972	31
<i>CHI Wheat</i>	<i>Wv1</i>	<i>Dec 21</i>	220,794	3,585	382,022	(13,820)
<i>KC Wheat</i>	<i>KWv1</i>	<i>Dec 21</i>	136,951	(725)	226,176	(3,891)
<i>Rice</i>	<i>RRc2</i>	<i>Nov 21</i>	6,294	183	7,941	220
					Total Open Interest*	Change
CME Product						
<i>Live Cattle</i>	<i>LCc2</i>	<i>Dec 17</i>	121,016	(1,631)	313,134	999
<i>Lean Hogs</i>	<i>LHc2</i>	<i>Dec 17</i>	77,192	1,518	272,411	3,546

*Previous day preliminary data as of 8/27/2021

Top 15 most active options

Option Strike	TL Globex/Pit Volume	Current Open Interest	Open Interest Change from previous day
<i>CZ 650C</i>	5,403	27,522	+ 2,196
<i>SX 1200P</i>	3,791	14,349	- 358
<i>CU 550C</i>	3,625	0	- 8,721
<i>CU 550P</i>	3,582	0	- 7,078
<i>CZ 780C</i>	3,301	2,166	- 2,041
<i>CZ 500P</i>	3,200	35,935	+ 1,517
<i>CZ 450P</i>	2,785	16,904	- 2,189
<i>CU 560C</i>	2,756	0	- 5,793
<i>BOU 620C</i>	2,407	0	- 1,818
<i>SX 1440C</i>	2,304	6,392	- 1,140
<i>WU 730C</i>	2,301	0	- 3,958
<i>WU 715P</i>	2,297	0	- 1,680
<i>SX 1500C</i>	2,071	23,872	+ 275
<i>SU 1360C</i>	1,923	0	- 1,765
<i>SU 1320P</i>	1,891	0	- 1,659

*Previous day preliminary data as of 8/29/2021

USDA inspections versus Reuters trade range

Wheat	316,844	versus 400000-675000	range
Corn	562,549	versus 600000-800000	range
Soybeans	377,341	versus 100000-300000	range

US EXPORT INSPECTIONS						Cumulative		USDA	Weekly Ave. to	Weekly rate	Shipments
Million Bushels	Actual	FI Estimates	Last Week	LW revised	5-Year Ave.	YTD	YOY %	Projection	To date	to Reach USDA	% of USDA
WHEAT	11.642	17 to 24	26.797	2.625	20.2	222	-10.6%	875	17.0	16.8	25.4%
CORN	22.147	26 to 33	29.341	3.586	34.3	2,589	56.9%	2775	49.7	-3,102.5	93.3%
SOYBEANS	13.865	6 to 9	8.817	0.952	33.3	2,178	37.1%	2260	41.8	-1,363.1	96.4%

Million Tons	Actual	Estimates	Last Week	LW revised	5-Year Ave.	YTD	YOY MT	Projection	To date	to Reach USDA	% of USDA
WHEAT	0.317	0.450 to 0.650	0.729	0.071	0.551	6.052	-0.716	23.81	0.463	0.456	25.4%
CORN	0.563	0.650 to 0.850	0.745	0.091	0.872	65.755	23.859	70.49	1.263	-78.806	93.3%
SOYBEANS	0.377	0.150 to 0.250	0.240	0.026	0.907	59.279	16.044	61.51	1.139	-37.098	96.4%

Source: USDA & FI

US EXPORT INSPECTIONS: TOP COUNTRIES, IN MILLION BUSHELS

Corn	22.147	Wheat	11.642	Beans	13.865
Mexico	11.201	Mexico	2.587	Mexico	4.481
China	5.460	Philippines	2.345	China	2.624
Japan	1.606	Malaysia	0.900	Japan	2.233
Costa Rica	1.166	Japan	0.766	Costa Rica	0.618
Colombia	0.390	Thailand	0.626	Indonesia	0.180
Taiwan	0.124	Rep S Africa	0.386	Malaysia	0.161

US EXPORT INSPECTIONS: TOP COUNTRIES, IN TONS

Corn	562,549	Wheat	316,844	Beans	377,341
MEXICO	284,506	MEXICO	70,397	MEXICO	121,952
CHINA	138,681	PHILIPPINES	63,813	CHINA	71,401
JAPAN	40,793	MALAYSIA	24,493	JAPAN	60,784
COSTA RICA	29,616	JAPAN	20,838	COSTA RICA	16,814
COLOMBIA	9,897	THAILAND	17,041	INDONESIA	4,899
TAIWAN	3,160	REP S AFRICA	10,500	MALAYSIA	4,384

Source: USDA & FI

GRAINS INSPECTED AND/OR WEIGHED FOR EXPORT

REPORTED IN WEEK ENDING AUG 26, 2021

-- METRIC TONS --

GRAIN	WEEK ENDING			CURRENT	PREVIOUS
	08/26/2021	08/19/2021	08/27/2020	MARKET YEAR TO DATE	MARKET YEAR TO DATE
BARLEY	0	173	1,270	6,550	3,731
CORN	562,549	745,303	423,765	65,755,115	41,895,751
FLAXSEED	0	0	0	24	317
MIXED	0	0	0	48	0
OATS	0	0	100	100	900
RYE	0	0	0	0	0

Terry Reilly Grain Research

Futures International | One Lincoln Center | 18 W 140 Butterfield Rd. | Oakbrook Terrace, IL 60181

W: 312.604.1366 | treilly@futures-int.com

SORGHUM	74,186	128,581	162,996	7,101,350	4,964,788
SOYBEANS	377,341	239,957	820,655	59,278,994	43,234,627
SUNFLOWER	0	0	0	240	0
WHEAT	316,844	729,288	535,415	6,051,848	6,768,081
Total	1,330,920	1,843,302	1,944,201	138,194,269	96,868,195

CROP MARKETING YEARS BEGIN JUNE 1 FOR WHEAT, RYE, OATS, BARLEY AND FLAXSEED; SEPTEMBER 1 FOR CORN, SORGHUM, SOYBEANS AND SUNFLOWER SEEDS. INCLUDES WATERWAY SHIPMENTS TO CANADA.

Commitment of Traders

Traditional Daily Estimate of Funds 8/24/21

	Corn	Bean	Chi. Wheat	Meal	Oil
Actual	331.0	101.6	35.0	49.7	65.0
Estimated*	321.8	97.4	30.8	50.9	55.6
Difference	9.2	4.2	4.2	(1.2)	9.4

*Estimated as of Tuesday

Source: Reuters, CFTC & FI (FI est. are noted with latest date)

TRADITIONAL FUNDS net position changes

Wed to Tue, in 000 contracts

	Corn	Bean	Meal	Oil	Chi. Wheat	KC Wheat	Min Wheat
Futures Only	(14.9)	(14.8)	(5.2)	0.5	(11.7)	0.3	1.4
Futures & Options Combined	(13.7)	(15.1)	(7.8)	(1.6)	(13.7)	(1.2)	1.0

MANAGED MONEY net position changes

	Corn	Bean	Meal	Oil	Chi. Wheat	KC Wheat	Min Wheat
Futures Only	(11.2)	(15.1)	(6.9)	(2.3)	(13.8)	1.2	0.8
Futures & Options Combined	(7.9)	(14.0)	(7.0)	(2.1)	(12.2)	0.8	0.9

INDEX net position changes

	Corn	Bean	Meal	Oil	Chi. Wheat	KC Wheat	Min Wheat
Futures & Options Combined	(5.0)	0.6	0.2	(0.2)	0.1	(0.4)	NA

OPEN INTEREST net position changes

Wed to Tue, in 000 contracts

	Corn	Bean	Meal	Oil	Chi. Wheat	KC Wheat	Min Wheat
Futures Only	8.4	18.8	(3.5)	(11.1)	6.7	2.9	(4.3)
Futures & Options Combined	(4.2)	21.5	(3.1)	(6.5)	4.4	2.3	(4.5)

	Corn	Bean	Chi. Wheat	Meal	Oil
FI Est. Managed Fut. Only	266	74	9	20	71
FI Est. Managed Money F&O	279	78	13	20	71

Terry Reilly Grain Research

Futures International | One Lincoln Center | 18 W 140 Butterfield Rd. | Oakbrook Terrace, IL 60181

W: 312.604.1366 | treilly@futures-int.com

Macros

Corn

- Corn is lower on favorable weekend weather and sharply lower soybeans along with poor export inspections.
- USDA US corn export inspections as of August 26, 2021 were 562,549 tons, below a range of trade expectations, below 745,303 tons previous week and compares to 423,765 tons year ago. Major countries included Mexico for 284,506 tons, China for 138,681 tons, and Japan for 40,793 tons.
- CBOT corn open interest was down 31,309 contracts on Friday to 1.4 million contracts.
- AgRural: Brazil is estimated to plant first crop corn at 2.973 million hectares (7.3 million acres) this season.
- South Africa sees the corn production for 2021 at 16.316 million tons, up 6.6% from the 15.300 million tons harvested last season. The crop is expected to consist of 8.765 million tons of white maize, used for human consumption, and 7.552 million tons of yellow maize, used mainly in animal feed (CEC).
- China plans to buy more pork for reserves this week. They have already secured 50,000 tons since July.

Export developments.

- Taiwan's MFIG seeks up to 65,000 tons of corn on Tuesday for Nov/early Dec shipment.
- South Korea's KFA bought 66,000 (138,000 sought) tons of optional origin corn at \$321.69/ton for arrival around November 25 and November 30. It was thought to be SA or SAf origin.

EIA Monthly US Ethanol Production

	Jun-20	Dec-20	Jan-21	Feb-21	Mar-21	Apr-21	May-21	FI Jun-21
Ethanol mil barrels	25.958	30.097	28.847	22.928	29.338	28.218	31.223	
FI Estimate	26.013	29.793	29.435	23.818	29.895	28.492	31.549	31.303

Source: EIA Monthly Petroleum & Other Liquids Report, & FI

USDA NASS Monthly US Corn for Ethanol Use (sorghum FI est.)

	Jul-20	Jan-21	Feb-21	Mar-21	Apr-21	May-21	Jun-21	FI Jul-21
Corn use (mil bu)	424	415	334	420	449	449	440	-
FI Estimate								456
Bloomberg Estimate								
Sorghum use (mil bu)	1.7	1.8	1.8	1.8	1.8	0.2	0.6	-
DDGS Output (000 short tons)	1,865	1,753	1,406	1,803	1,768	1,943	1,930	-

Source: USDA Monthly Grain Crushings and Co-Products Production Report, & FI

Terry Reilly Grain Research

Futures International | One Lincoln Center | 18 W 140 Butterfield Rd. | Oakbrook Terrace, IL 60181

W: 312.604.1366 | treilly@futures-int.com

US Weekly Petroleum Status Report - Ethanol

	Ethanol Production		Change		Ethanol Stocks		Change		Days of Ethanol
	FI Production Est.	Mbbl	Last Week	Last Year	FI Stocks Est.	Mbbl	Last Week	Last Year	
7/2/2021		1067	9	16.7%		21,149	-423	2.6%	20.2
7/9/2021		1041	-26	11.8%		21,134	-15	2.6%	20.3
7/16/2021		1028	-13	13.2%		22,518	1384	13.7%	20.6
7/23/2021		1014	-14	5.8%		22,733	215	12.1%	22.2
7/30/2021		1013	-1	8.8%		22,649	-84	11.3%	22.4
8/6/2021		986	-27	7.4%		22,276	-373	12.8%	23.0
8/13/2021		973	-13	5.1%		21,558	-718	6.4%	22.9
8/20/2021		933	-40	0.2%		21,223	-335	4.0%	23.1
8/27/2021	-10 to -15				-50 to -150				

Source: EIA and FI

Soybeans

- The CBOT soybeans complex is lower led by the collapsed in the nearby soybean September contract due to head into delivery on Tuesday. Slow US shipments are also weighing on the Sep contract as hurricane Ida, a slow moving storm, hit the Gulf coast over the past 24-hours. Soybean oil, down more than 140 points in the nearby, is also pressuring soybeans. Meal is lower despite a higher lead in offshore values overnight. Look for risk off early this week but that could change depending on what USDA shows for crop progress this afternoon.
- Stats Canada estimated the canola crop at a low 14.7 million tons, nearly 25 percent off of last year.
- USDA US soybean export inspections as of August 26, 2021 were 377,341 tons, above a range of trade expectations, above 239,957 tons previous week and compares to 820,655 tons year ago. Major countries included Mexico for 121,952 tons, China for 71,401 tons, and Japan for 60,784 tons.
- Ukraine sunflower oil exports are seen rising 18 percent to 6.35 million tons from 5.38 expected in 2020-21.
- Offshore values this morning were leading soybean oil 4 points lower and meal \$2.90 higher.

Malaysian palm oil

MALAYSIA PALM OIL

		30-Aug	27-Aug		
Futures MYR/MT	NOV1	4254	4333	-79	\$1,024
RBD Olien Cash USD/MT	Nov21	\$1,095.00	\$1,105.00	-\$10.00	-0.9%
US Gulf Crude SBO over RBD Palm	Spot	\$261	\$243	\$18	

- China cash crush margins were last positive 121 cents on our analysis versus 121 cents late last week and 80 cents around a year ago.
- China

China Futures (Set. - Prv. Settle)		30-Aug	27-Aug	
Soybeans #1 (DCE) CNY/MT	JAN2	5815	5887	-72 -1.2%
Soybean Meal	JAN2	3522	3504	+18 0.5%
Soybean Oil	JAN2	9092	9090	+2 0.0%
China Palm Oil	JAN2	8282	8260	+22 0.3%
China Futures Crush Margin				
USD/BU	JAN2	-2.43	-2.58	+0.15
CNY/MT	JAN2	-1378.45	-1465.12	+86.67
Corn (DCE) CNY/MT	JAN2	2481	2487	-6 -0.2%
Wheat (ZCE) CNY/MT	SEP1	2711	2702	+9 0.3%
Hogs (ZCE) CNY	JAN2	16670	17145	-475 -2.8%

Export Developments

- Under the USDA 24-hour announcement system, private exporters sold 256,000 tons of soybeans for delivery to China during the 2021-22 marketing year.

EIA Monthly US Feedstock Use for Biofuel/ Biodiesel Production - For working purposes

	Jun-20	Dec-20	Jan-21	Feb-21	Mar-21	Apr-21	May-21	FI Jun-21
Soybean Oil mil pounds	747	744	552	552	740	700	788	
FI Estimate								838
All Feedstock mil pounds	1,136	1,176	NA	NA	NA	NA	NA	NA
FI Estimate								1,311

Source: EIA Monthly Biodiesel Production Report, & FI

USDA Monthly Soybean Crush and Soybean Oil Stocks

							FI
	Jul-20	Feb-21	Mar-21	Apr-21	May-21	Jun-21	Jul-21
Soybeans crushed							
mil bushels	184.5	164.3	188.2	169.8	173.5	161.7	-
mil bushels per day	6.0	5.9	6.1	5.7	5.6	5.4	
Ave. Trade Estimate	183.0	166.4	188.3	170.9	173.4	162.0	
FI Estimate	183.7	164.3	188.3	170.5	173.6	161.6	165.1
Soybean oil Production million pounds	2,123	1,925	2,222	1,992	2,043	1,909	-
Soybean oil stocks							
mil pounds	2,123	2,306	2,245	2,178	2,147	2,100	-
Ave. Trade Estimate	2,131	2,260	2,323	2,178	2,143	1,992	
FI Estimate	2,139	2,225	2,300	2,200	2,125	1,970	2,115
Soybean oil yield pounds per bushel	11.51	11.71	11.81	11.73	11.78	11.80	
Soybean meal production 000 short tons	4,361	3,919	4,477	4,045	4,123	3,834	
Soybean meal stocks 000 short tons	451	584	448	452	641	439	
Soybean meal yield pounds per bushel	47.28	47.69	47.57	47.63	47.53	47.41	

Source: USDA NASS Fats and Oils, Bloomberg, & FI (Bloomberg range ; Reuters)

Wheat

- Wheat is mixed with nearby MN lower on harvest pressure and a Canadian all-wheat production estimate coming in near expectations. Chicago and KC are mixed on light fund buying and spreading against corn.
- Global import demand remains firm with several tenders on deck. Egypt bought Ukraine wheat and Algeria is in this Tuesday for milling wheat.
- USDA US all-wheat export inspections as of August 26, 2021 were 316,844 tons, below a range of trade expectations, below 729,288 tons previous week and compares to 535,415 tons year ago. Major countries included Mexico for 70,397 tons, Philippines for 63,813 tons, and Malaysia for 24,493 tons.
- Stats Canada estimated the all-wheat crop at a 14-year low of
- The USD was 3 points lower at the time this was written
- December Paris wheat was up 0.75 euros at 247.50.
- Russian wheat export prices were up \$4/ton at the end of last week to \$299/ton fob, according to IKAR.
- Ukraine's AgMin estimated the 80.6 million tons of grain in 2021, allowing for exports 60.68 million tons, including 32 million tons of wheat harvested and 37.1 million tons of corn produced.
- Ukraine exported 7 million tons of grain since July 1, up 10% from 6.4 million tons during the same period last season, including 3.4 million tons of wheat and 1.18 million tons of corn. 2.4 million tons of barley also had been exported.

Export Developments.

- Egypt bought 180,000 tons of Ukrainian wheat for October 15 through October 25 shipment.
 - - 60,000 tons Romanian wheat at \$308.50 a ton FOB plus \$29.60 freight (ocean shipping) totaling \$338.10 a ton c&f

Terry Reilly Grain Research

Futures International | One Lincoln Center | 18 W 140 Butterfield Rd. | Oakbrook Terrace, IL 60181

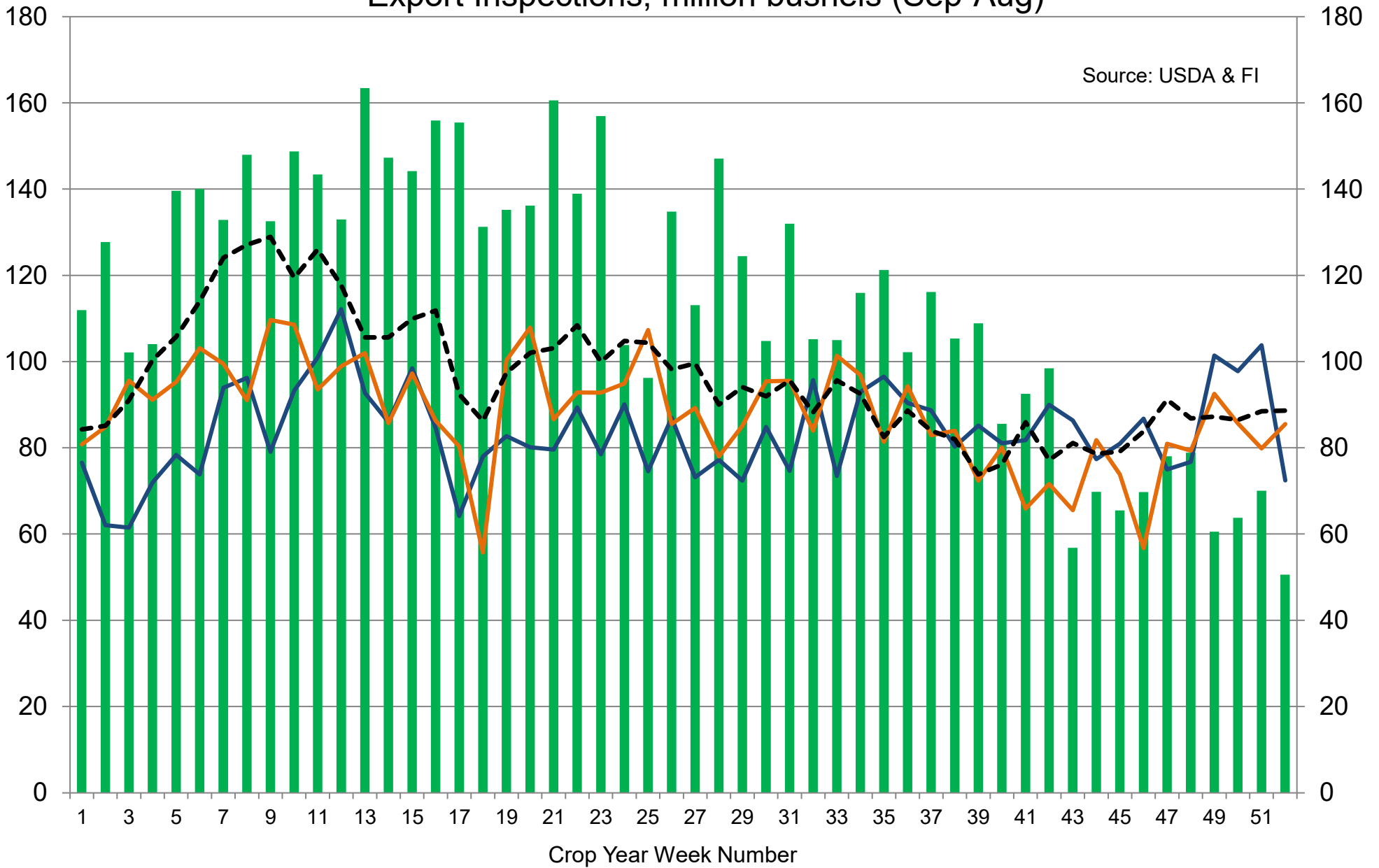
W: 312.604.1366 | treilly@futures-int.com

- - 60,000 tons Ukrainian wheat at \$304.25 plus \$36.08 freight totaling \$340.33 a ton c&f
- - 60,000 tons Romanian wheat at \$308.50 plus \$34.43 freight totaling \$342.93 a ton c&f
- Algeria seeks at least 50,000 tons of wheat on Tuesday for October shipment.
- Jordan seeks 120,000 tons of feed barley on September 2 for LH October through FH December shipment.
- Jordan seeks 120,000 tons of wheat on September 1.
- Bangladesh seeks 50,000 tons wheat on September 1.
- Turkey seeks 300,000 tons of milling wheat on September 2 for September 10 through October 10 shipment. They last bought 11.5% and 12.5% wheat on August 4 at \$297.40-\$308.90/ton c&f.
- Taiwan seeks 48,875 tons of US wheat on September 3 for October 15-November 1 shipment. They last bought US wheat on August 6, various classes at various prices.
- Pakistan seeks 550,000 tons of wheat on September 7 for October through November shipment.
- Mauritius seeks 47,000 tons of wheat flour, optional origin, on Sept. 21 for various 2022 shipment.

Rice/Other

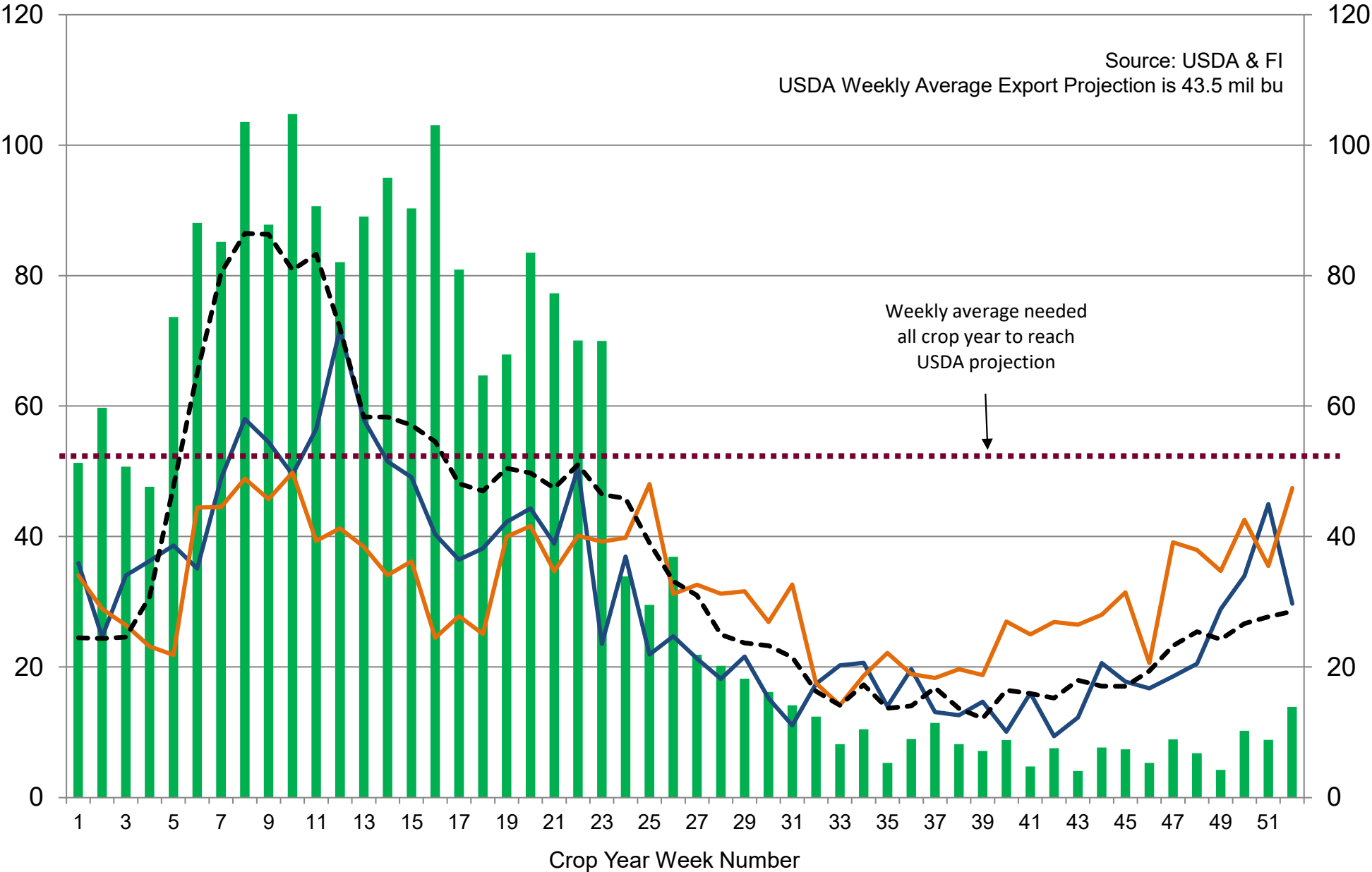
- Egypt bought 200,000 tons of raw sugar for Oct-Dec shipment.
- South Korea seeks 42,200 tons of rice for arrival in South Korea between February 28 and April 2022. 20,000 tons of that is of US origin, rest optional .

US Weekly USDA Combined Wheat, Soybeans, Corn, and Sorghum Export Inspections, million bushels (Sep-Aug)



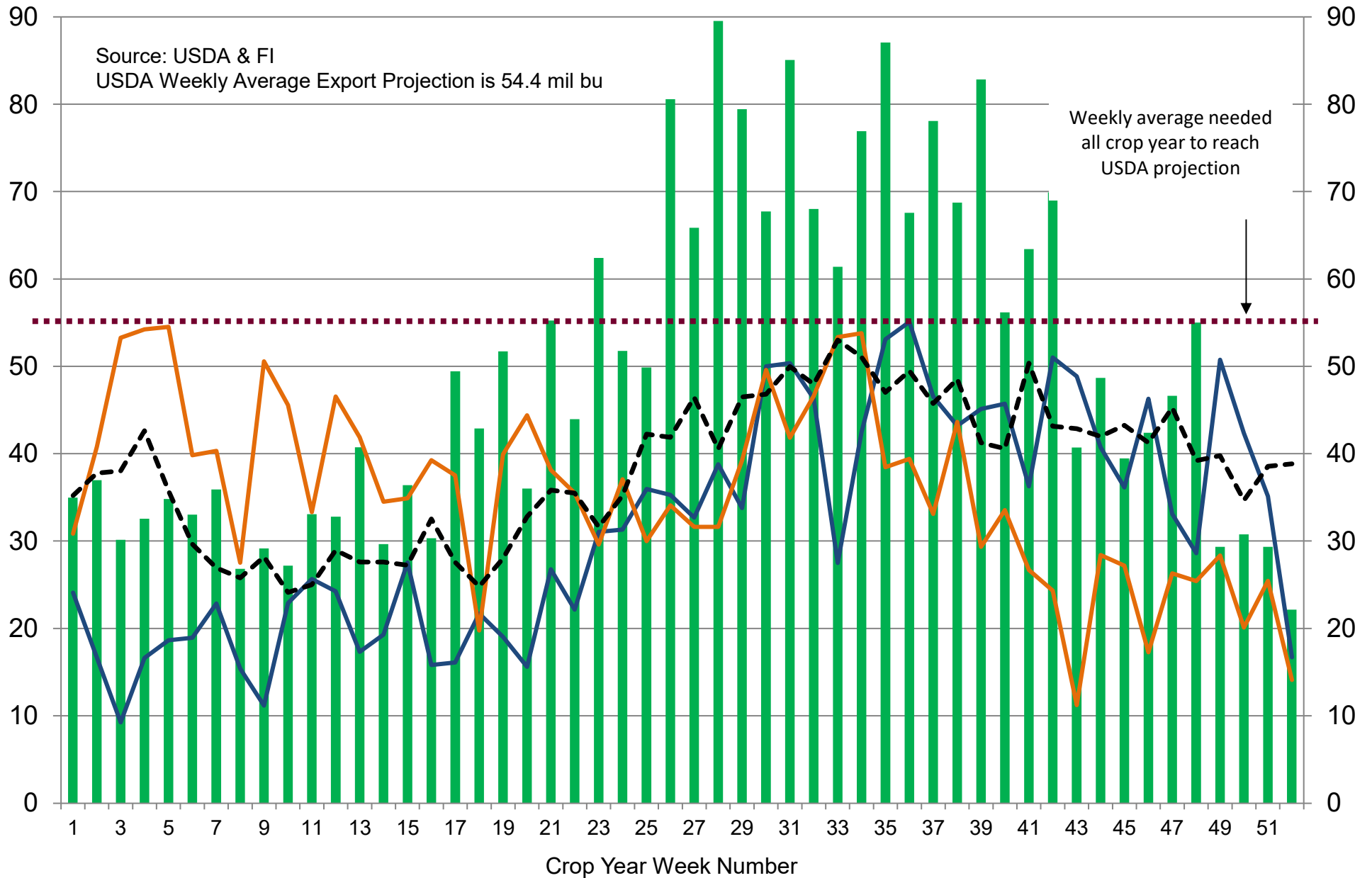
■ 2020-21
 — 2019-20
 — 2018-19
 --- 5-Year Average

US Weekly USDA Soybean Export Inspections, million bushels



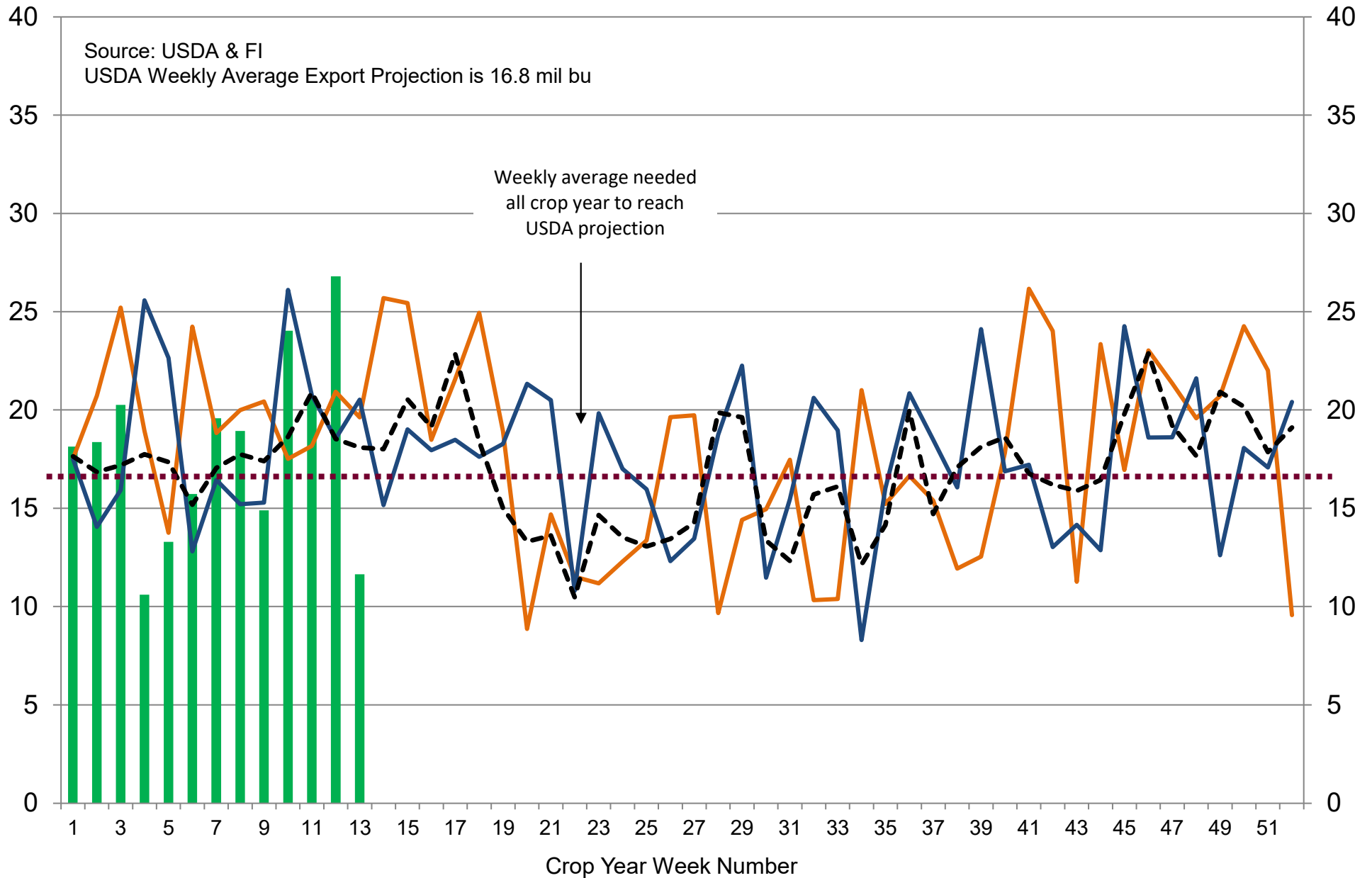
■ 2020-21
 — 2019-20
 — 2018-19
 - - - 5-Year Average

US Weekly USDA Corn Export Inspections, million bushels



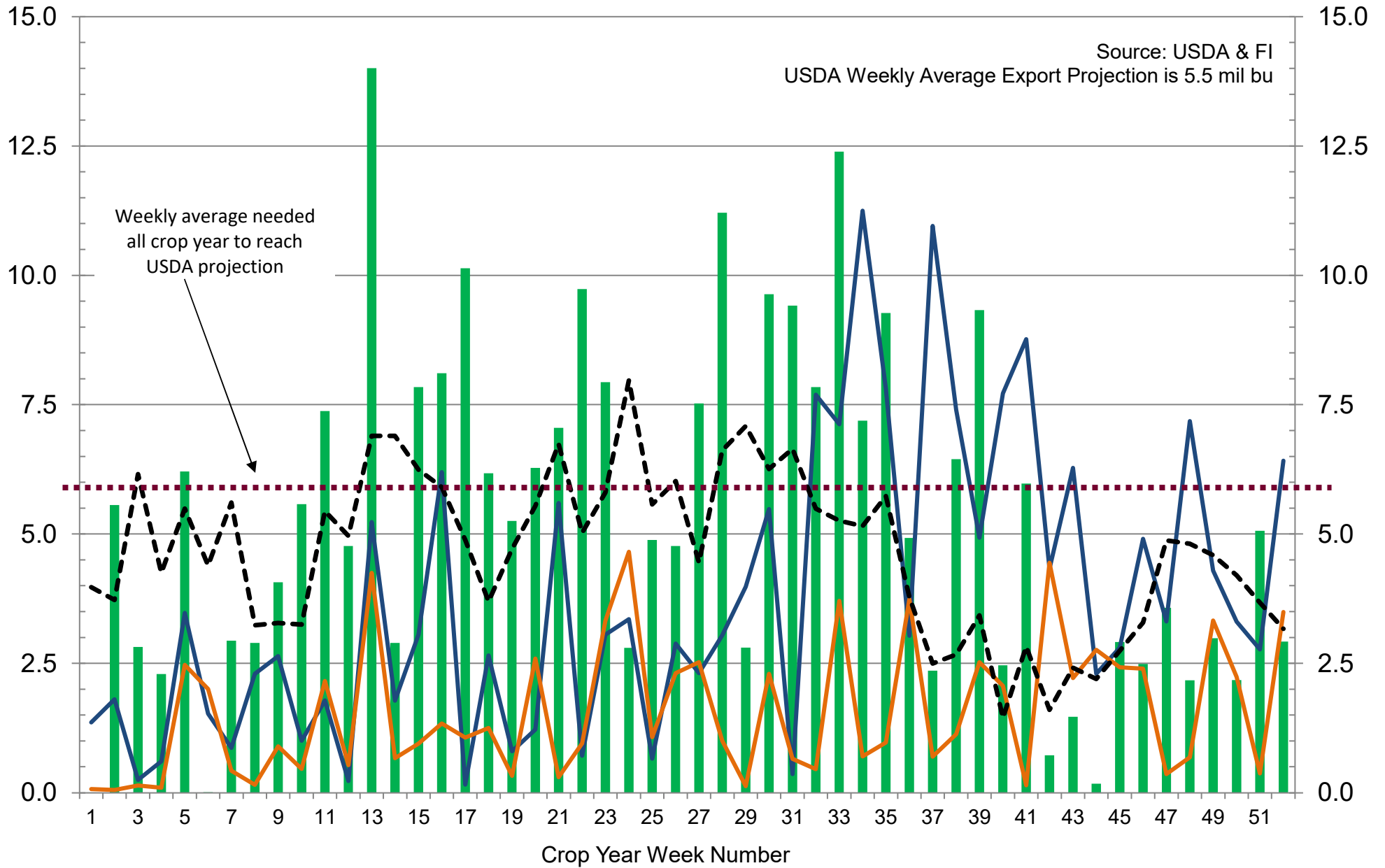
■ 2020-21
 — 2019-20
 — 2018-19
 - - - 5-Year Average

US Weekly USDA All-Wheat Export Inspections, million bushels



■ 2021-22
 — 2020-21
 — 2019-20
 - - - 5-Year Average

US Weekly USDA Sorghum Export Inspections, million bushels



■ 2020-21
 — 2019-20
 — 2018-19
 - - - 5-Year Average

Foreign Agriculture Market Guidance

As of 7:18 AM

Day on day change

		30-Aug	27-Aug	Change
Rotterdam Oils				
Soy oil EUR/MT	Sep/Oct	1,215.00	1,220.00	-5.00
Rape oil EUR/MT	Sep/Oct	1,330.00	1,312.00	+18.00
Rotterdam Soybean Meal				
Argentina USD/MT (high protien)	Sep	472.00	472.00	unchanged
Argentina USD/MT	Oct/Dec	461.50	461.50	unchanged
Brazil USD/MT (pellets)	Sep	472.50	472.50	unchanged
Brazil USD/MT	Oct/Dec	453.00	460.00	-7.00
MALAYSIA PALM OIL				
		30-Aug	27-Aug	
Futures MYR/MT	NOV1	4254	4333	-79 \$1,024
RBD Olien Cash USD/MT	Nov21	\$1,095.00	\$1,105.00	-\$10.00 -0.9%
US Gulf Crude SBO over RBD Palm	Spot	\$261	\$243	\$18
China Futures (Set. - Prv. Settle)				
		30-Aug	27-Aug	
Soybeans #1 (DCE) CNY/MT	JAN2	5815	5887	-72 -1.2%
Soybean Meal	JAN2	3522	3504	+18 0.5%
Soybean Oil	JAN2	9092	9090	+2 0.0%
China Palm Oil	JAN2	8282	8260	+22 0.3%
China Futures Crush Margin				
USD/BU	JAN2	-2.43	-2.58	+0.15
CNY/MT	JAN2	-1378.45	-1465.12	+86.67
Corn (DCE) CNY/MT	JAN2	2481	2487	-6 -0.2%
Wheat (ZCE) CNY/MT	SEP1	2711	2702	+9 0.3%
Hogs (ZCE) CNY	JAN2	16670	17145	-475 -2.8%
China Cash				
		30-Aug	27-Aug	
Cash Soybean Crush USD/BU	Spot	\$1.21	\$1.21	-0.00
Average Cash Wheat USD/BU		\$10.83	\$10.82	+0.01
Average Cash Corn USD/BU		\$10.85	\$10.85	+0.00
Corn North USD/BU	Spot	\$10.17	\$10.16	+0.01
Corn South USD/BU	Spot	\$11.35	\$11.36	-0.01
Reuters Imported Corn South USD/BU	Spot	\$8.53	\$8.43	+0.10
Matif Wheat (Liffe)				
		\$/ton	\$293.21	\$291.11
Matif EUR/MT morning over morning	DEC1	248.50	247.50	+1.00
Baltic Dry Index				
	Spot	4235	4195	+40
		27-Aug	26-Aug	
Exchange Rates				
EU	Euro/\$	1.1799	1.1762	+0.0037
MYR	Ringgit/\$	4.1550	4.1880	-0.0330
CNY	RMB/\$	6.4692	6.4743	-0.0051

Currency adjusted to the CME pit close

In cents/bu	30-Aug
oils in points and meal in USD/short ton	
Rot soy oil	-19
Rot rape oil	+105

Rot meal	
	\$2.30
Rot meal	
	\$0.18

Malaysian Fut	-79
Malaysian Cash	-75

China soy #1	-25
China meal	\$6.26
China oil	-24

Dalian corn	-6
Gluten Wheat	+11

Matif morning	+12.45
---------------	--------

ALL OILS
Average lead
-4
ALL MEAL
Average lead
\$2.91

CME electronic close change

SU21	-8.25	SMU21	-2.30	BOU21	-3	CU21	+5.25
SX21	-3.00	SMV21	-3.20	BOV21	+29	CZ21	+3.00
SF22	-3.00	SMZ21	-3.50	BOZ21	+31	CH22	+3.00
SH22	-3.00	SMF22	-3.40	BOF22	+33	WU21	-6.75
SK22	-2.50	SMH22	-2.80	BOH22	+35	WZ21	-6.75
SN22	-2.50	SMK22	-2.80	BOK22	+33	WH22	-6.00
						WK22	-5.50

#1 China SB is only designed for Non-GMO soybeans, but captures 96-98% of total bean open interest. #2 China soybeans are not heavily traded

Source: Reuters, Dow Jones Newswires and Futures International



Futures International, LLC

An OTC Global Holdings LP Company

CBOT Deliverable Commodities Under Registration

Source: CBOT and FI

Date	CHI Wheat	Change	Oats	Change	Corn	Change	Ethanol	Change	Soybeans	Change	Soy Oil	Change	Soy Meal	Change	Rough Rice	Change	KC Wheat	Change
8/27/2021	0	0	0	0	0	0	0	0	0	0	249	0	1	0	803	0	1,288	0
8/26/2021	0	0	0	0	0	0	0	0	0	0	249	(49)	1	(4)	803	0	1,288	0
8/25/2021	0	0	0	0	0	0	0	0	0	0	298	0	5	0	803	0	1,288	0
8/24/2021	0	0	0	0	0	0	0	0	0	0	298	0	5	(29)	803	(35)	1,288	0
8/23/2021	0	0	0	0	0	0	0	0	0	0	298	0	34	0	838	0	1,288	0
8/20/2021	0	0	0	0	0	0	0	0	0	0	298	0	34	(45)	838	(35)	1,288	0
8/19/2021	0	0	0	0	0	0	0	0	0	0	298	0	79	0	873	0	1,288	0
8/18/2021	0	0	0	0	0	0	0	0	0	0	298	0	79	0	873	0	1,288	0
8/17/2021	0	0	0	0	0	0	0	0	0	0	298	0	79	0	873	0	1,288	0
8/16/2021	0	0	0	0	0	0	0	0	0	0	298	0	79	0	873	0	1,288	0
8/13/2021	0	0	0	0	0	0	0	0	0	0	298	0	79	(76)	873	(36)	1,288	0
8/12/2021	0	0	0	0	0	0	0	0	0	0	298	0	155	0	909	0	1,288	0
8/11/2021	0	0	0	0	0	0	0	0	0	0	298	(37)	155	0	909	0	1,288	0
8/10/2021	0	0	0	0	0	0	0	0	0	0	335	(10)	155	0	909	(35)	1,288	0
8/9/2021	0	0	0	0	0	0	0	0	0	0	345	(43)	155	0	944	0	1,288	0
8/6/2021	0	0	0	0	0	0	0	0	0	0	388	0	155	0	944	0	1,288	0
8/5/2021	0	0	0	0	0	0	0	0	0	0	388	0	155	0	944	0	1,288	0
8/4/2021	0	0	0	0	0	0	0	0	0	0	388	0	155	(20)	944	(55)	1,288	0
8/3/2021	0	0	0	0	0	0	0	0	0	0	388	0	175	0	999	0	1,288	0
8/2/2021	0	0	0	0	0	0	0	0	0	0	388	0	175	0	999	(30)	1,288	0
7/30/2021	0	0	0	0	0	0	0	0	0	0	388	0	175	0	1,029	0	1,288	0
7/29/2021	0	0	0	0	0	0	0	0	0	0	388	0	175	0	1,029	(35)	1,288	0
7/28/2021	0	0	0	0	0	0	0	0	0	0	388	0	175	0	1,064	0	1,288	0
7/27/2021	0	0	0	0	0	0	0	0	0	0	388	0	175	0	1,064	(35)	1,288	0
7/26/2021	0	0	0	0	0	0	0	0	0	0	388	0	175	0	1,099	0	1,288	0
7/23/2021	0	0	0	0	0	0	0	0	0	(13)	388	0	175	0	1,099	0	1,288	0
7/22/2021	0	0	0	0	0	0	0	0	13	0	388	0	175	0	1,099	(191)	1,288	0
7/21/2021	0	0	0	0	0	0	0	0	13	0	388	0	175	0	1,290	0	1,288	0
7/20/2021	0	0	0	0	0	0	0	0	13	0	388	0	175	0	1,290	0	1,288	0
7/19/2021	0	0	0	0	0	0	0	0	13	0	388	0	175	(87)	1,290	(87)	1,288	0
7/16/2021	0	(1)	0	0	0	(77)	0	0	13	0	388	0	262	0	1,377	(91)	1,288	0
7/15/2021	1	(15)	0	0	77	0	0	0	13	0	388	0	262	(56)	1,468	(32)	1,288	0
7/14/2021	16	(4)	0	0	77	77	0	0	13	0	388	0	318	(84)	1,500	0	1,288	0
7/13/2021	20	0	0	0	0	0	0	0	13	0	388	0	402	(5)	1,500	0	1,288	0
7/12/2021	20	0	0	0	0	0	0	0	13	0	388	0	407	0	1,500	0	1,288	0
7/9/2021	20	0	0	0	0	0	0	0	13	0	388	0	407	0	1,500	0	1,288	39

Disclaimer

TO CLIENTS/PROSPECTS OF FUTURES INTERNATIONAL, SEE RISK DISCLOSURE BELOW:

THIS COMMUNICATION IS CONVEYED AS A SOLICITATION FOR ENTERING INTO A DERIVATIVES TRANSACTION.

Any trading recommendations and market or other information to Customer by Futures International (FI), although based upon information obtained from sources believed by FI to be reliable may not be accurate and may be changed without notice to customer. FI makes no guarantee as to the accuracy or completeness of any of the information or recommendations furnished to Customer. Customer understands that FI, its managers, employees and/or affiliates may have a position in commodity futures, options or other derivatives which may not be consistent with the recommendations furnished by FI to Customer.

The risk of trading futures and options and other derivatives involves a substantial risk of loss and is not suitable for all persons. In purchasing an option, the risk is limited to the premium paid, and all commissions and fees involved with the trade. When an option is shorted or written, the writer of the option has unlimited risk with respect to the option written. The use of options strategies such as a straddles and strangles involve multiple option positions and may substantially increase the amount of commissions and fees paid to execute the strategy. Option prices do not necessarily move in tandem with cash or futures prices. Each person must consider whether a particular trade, combination of trades or strategy is suitable for that person's financial means and objectives.

This material may include discussions of seasonal patterns, however, futures prices have already factored in the seasonal aspects of supply and demand, and seasonal patterns are no indication of future market trends. Finally, past performance is not indicative of future results.

This communication may contain links to third party websites which are not under the control of FI and FI is not responsible for their content. Products and services are offered only in jurisdictions where solicitation and sale are lawful, and in accordance with applicable laws and regulations in each such jurisdiction.