

# US Weekly Petroleum Status Report - Ethanol

	Ethanol Production		Change		Ethanol Stocks		Change		Days of Ethanol
	Mbbl	Last Week	Last Year	Mbbl	Last Week	Last Year			
5/21/2021	1011	(21)	39.6%	18,980	(453)	-18.1%	19.2		
5/28/2021	1034	23	35.2%	19,588	608	-12.8%	18.4		
6/4/2021	1067	33	27.5%	19,960	372	-8.4%	18.4		
6/11/2021	1025	(42)	21.9%	20,602	642	-3.5%	19.5		
6/18/2021	1048	23	17.4%	21,120	518	0.4%	19.7		
6/25/2021	1058	10	17.6%	21,572	452	7.0%	20.0		
7/2/2021	1067	9	16.7%	21,149	(423)	2.6%	20.2		
7/9/2021	1041	(26)	11.8%	21,134	(15)	2.6%	20.3		
7/16/2021	1028	(13)	13.2%	22,518	1,384	13.7%	20.6		

Source: EIA and FI

## US Weekly Ethanol By PADD

	16-Jul 2021	9-Jul 2021	Change	Weekly Percent	4-Week Percent	YOY Percent
<b>Ethanol Stocks</b>						
Total Stocks	22518	21134	1,384	6.5%	4.4%	13.7%
East Coast PADD 1	6909	6593	316	4.8%	0.5%	17.5%
Midwest PADD 2	8471	7740	731	9.4%	10.0%	27.8%
Gulf Coast PADD 3	4055	3841	214	5.6%	0.6%	-6.8%
Rocky Mt. PADD 4	340	314	26	8.3%	-0.9%	-8.8%
West Coast PADD 5	2743	2646	97	3.7%	4.6%	6.9%
<b>Plant Production</b>						
Total Production	1028	1041	(13)	-1.2%	-2.8%	13.2%
East Coast PADD 1	12	12	0	0.0%	9.1%	
Midwest PADD 2	980	993	(13)	-1.3%	-3.3%	14.0%
Gulf Coast PADD 3	18	17	1	5.9%	12.5%	
Rocky Mt. PADD 4	10	10	0	0.0%	11.1%	
West Coast PADD 5	9	9	0	0.0%	12.5%	

Source: EIA and FI

Source: EIA and FI

Page 1	Weekly Ethanol Snapshot	Page 12	Net Ethanol Blend
Page 2	Ethanol Table	Page 13	Selected Commodities Indexed vs. WTI \$
Page 3	Production Chart	Page 14	Ethanol-RBOB
Page 4	Production and Stocks	Page 15	Ethanol Crush with implied costs
Page 5	Ethanol Stocks	Page 16	Chicago Ethanol with straight corn crush
Page 6	PADD Ethanol Stocks	Page 17	CBOT corn crush with IL DDGS
Page 7	Gasoline Ethanol Stocks	Page 18	Disclaimer
Page 8	Gasoline Supplied		
Page 9	Ethanol Imports		
Page 10	US Annualized Implied Corn Use		
Page 11	Net Ethanol Consumption		

Source: Reuters, Bloomberg, EIA, CME and FI

Created by Terry Reilly

Futures International

[treilly@futures-int.com](mailto:treilly@futures-int.com)

# US Weekly Petroleum Status Report

	Ethanol Production 000 Barrels Per Day	Change from Last Week	Change from Last Month	Change from Last Year	Ethanol Stocks 000 Barrels	Change from Last Week	Change from Last Month	Change from Last Year	Days of Ethanol Inventory
7/17/2020	908	(23)	1.7%	-12.6%	19,801	(807)	-5.9%	-16.4%	22.7
7/24/2020	958	50	6.4%	-7.1%	20,272	471	0.5%	-17.1%	20.7
7/31/2020	931	(27)	1.9%	-10.5%	20,346	74	-1.3%	-12.0%	21.8
8/7/2020	918	(13)	-1.4%	-12.2%	19,750	(596)	-4.2%	-17.3%	22.2
8/14/2020	926	8	2.0%	-9.5%	20,270	520	2.4%	-13.3%	21.3
8/21/2020	931	5	-2.8%	-10.3%	20,409	139	0.7%	-11.2%	21.8
8/28/2020	922	(9)	-1.0%	-9.0%	20,882	473	2.6%	-12.3%	22.1
9/4/2020	941	19	2.5%	-8.0%	19,993	(889)	1.2%	-11.1%	22.2
9/11/2020	926	(15)	0.0%	-7.7%	19,798	(195)	-2.3%	-14.8%	21.6
9/18/2020	906	(20)	-2.7%	-3.9%	19,997	199	-2.0%	-11.1%	21.9
9/25/2020	881	(25)	-4.4%	-8.0%	19,691	(306)	-5.7%	-15.2%	22.7
10/2/2020	923	42	-1.9%	-4.2%	19,672	(19)	-1.6%	-7.3%	21.3
10/9/2020	937	14	1.2%	-3.5%	20,008	336	1.1%	-9.3%	21.0
10/16/2020	913	(24)	0.8%	-8.3%	19,721	(287)	-1.4%	-7.7%	21.9
10/23/2020	941	28	6.8%	-6.3%	19,601	(120)	-0.5%	-7.1%	21.0
10/30/2020	961	20	4.1%	-5.2%	19,675	74	0.0%	-10.1%	20.4
11/6/2020	977	16	4.3%	-5.1%	20,159	484	0.8%	-3.9%	20.1
11/13/2020	962	(15)	5.4%	-6.9%	20,203	44	2.4%	-1.5%	21.0
11/20/2020	990	28	5.2%	-6.5%	20,866	663	6.5%	2.9%	20.4
11/27/2020	974	(16)	1.4%	-8.1%	21,240	374	8.0%	2.9%	21.4
12/4/2020	991	17	1.4%	-7.6%	22,083	843	9.5%	1.2%	21.4
12/11/2020	957	(34)	-0.5%	-10.1%	22,950	867	13.6%	5.3%	23.1
12/18/2020	976	19	-1.4%	-9.9%	23,169	219	11.0%	7.9%	23.5
12/25/2020	934	(42)	-4.1%	-12.4%	23,504	335	10.7%	11.7%	24.8
1/1/2021	935	1	-5.7%	-12.0%	23,284	(220)	5.4%	3.7%	25.1
1/8/2021	941	6	-1.7%	-14.1%	23,692	408	3.2%	3.0%	24.7
1/15/2021	945	4	-3.2%	-9.9%	23,628	(64)	2.0%	-1.7%	25.1
1/22/2021	933	(12)	-0.1%	-9.3%	23,602	(26)	0.4%	-2.6%	25.3
1/29/2021	936	3	0.1%	-13.4%	24,316	714	4.4%	3.6%	25.2
2/5/2021	937	1	-0.4%	-9.3%	23,796	(520)	0.4%	-2.3%	26.0
2/12/2021	911	(26)	-3.6%	-12.4%	24,297	501	2.8%	-2.0%	26.1
2/19/2021	658	(253)	-29.5%	-37.6%	22,785	(1512)	-3.5%	-7.8%	36.9
2/26/2021	849	191	-9.3%	-21.3%	22,425	(360)	-7.8%	-10.2%	26.8
3/5/2021	938	89	0.1%	-10.2%	22,070	(355)	-7.3%	-9.3%	23.9
3/12/2021	971	33	6.6%	-6.2%	21,340	(730)	-12.2%	-13.2%	22.7
3/19/2021	922	(49)	40.1%	-8.3%	21,809	469	-4.3%	-9.7%	23.1
3/26/2021	965	43	13.7%	14.9%	21,114	(695)	-5.8%	-17.9%	22.6
4/2/2021	975	10	3.9%	45.1%	20,642	(472)	-6.5%	-23.8%	21.7
4/9/2021	941	(34)	-3.1%	65.1%	20,518	(124)	-3.9%	-25.3%	21.9
4/16/2021	941	0	2.1%	67.1%	20,447	(71)	-6.2%	-26.2%	21.8
4/23/2021	945	4	-2.1%	76.0%	19,736	(711)	-6.5%	-25.1%	21.6
4/30/2021	952	7	-2.4%	59.2%	20,440	704	-1.0%	-20.2%	20.7
5/7/2021	979	27	4.0%	58.7%	19,393	(1047)	-5.5%	-19.8%	20.9
5/14/2021	1032	53	9.7%	55.7%	19,433	40	-5.0%	-17.7%	18.8
5/21/2021	1011	(21)	7.0%	39.6%	18,980	(453)	-3.8%	-18.1%	19.2
5/28/2021	1034	23	8.6%	35.2%	19,588	608	-4.2%	-12.8%	18.4
6/4/2021	1067	33	9.0%	27.5%	19,960	372	2.9%	-8.4%	18.4
6/11/2021	1025	(42)	-0.7%	21.9%	20,602	642	6.0%	-3.5%	19.5
6/18/2021	1048	23	3.7%	17.4%	21,120	518	11.3%	0.4%	19.7
6/25/2021	1058	10	2.3%	17.6%	21,572	452	10.1%	7.0%	20.0
7/2/2021	1067	9	0.0%	16.7%	21,149	(423)	6.0%	2.6%	20.2
7/9/2021	1041	(26)	1.6%	11.8%	21,134	(15)	2.6%	2.6%	20.3
7/16/2021	1028	(13)	-1.9%	13.2%	22,518	1384	6.6%	13.7%	20.6

4-week average change: -5

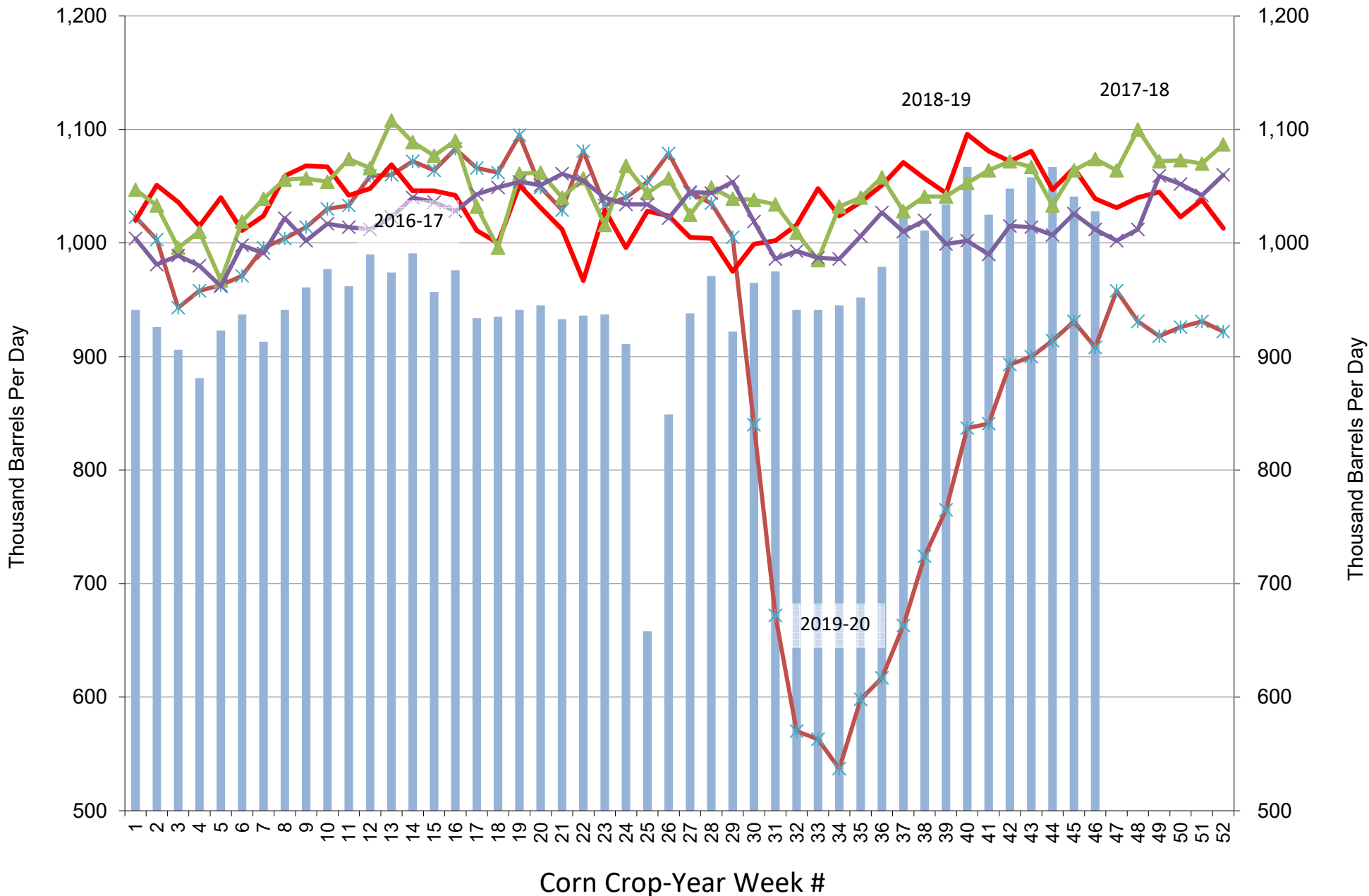
4-week average change: 350

CY to Date: 929 2019-20 season average  
CY to Date: 959 2020-21 season average

YOY Δ  
-10.3%  
3.2%

Source: Reuters, EIA, FI

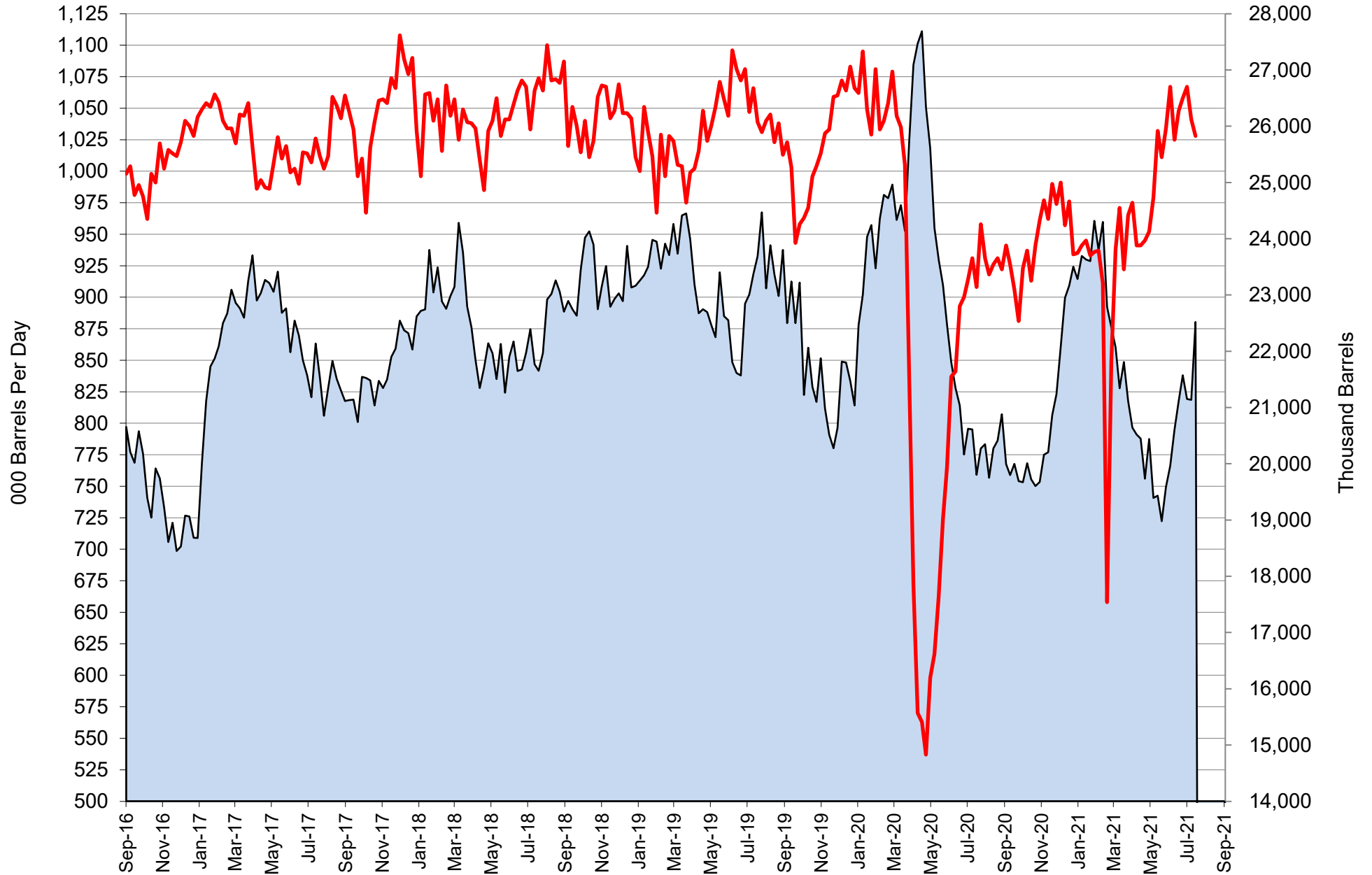
# US Weekly Ethanol Production



Source: EIA & FI

■ 2020-21   
 —x— 2019-20   
 — 2018-19   
 —▲— 2017-18   
 —x— 2016-17

# US Weekly Ethanol Production and Stocks

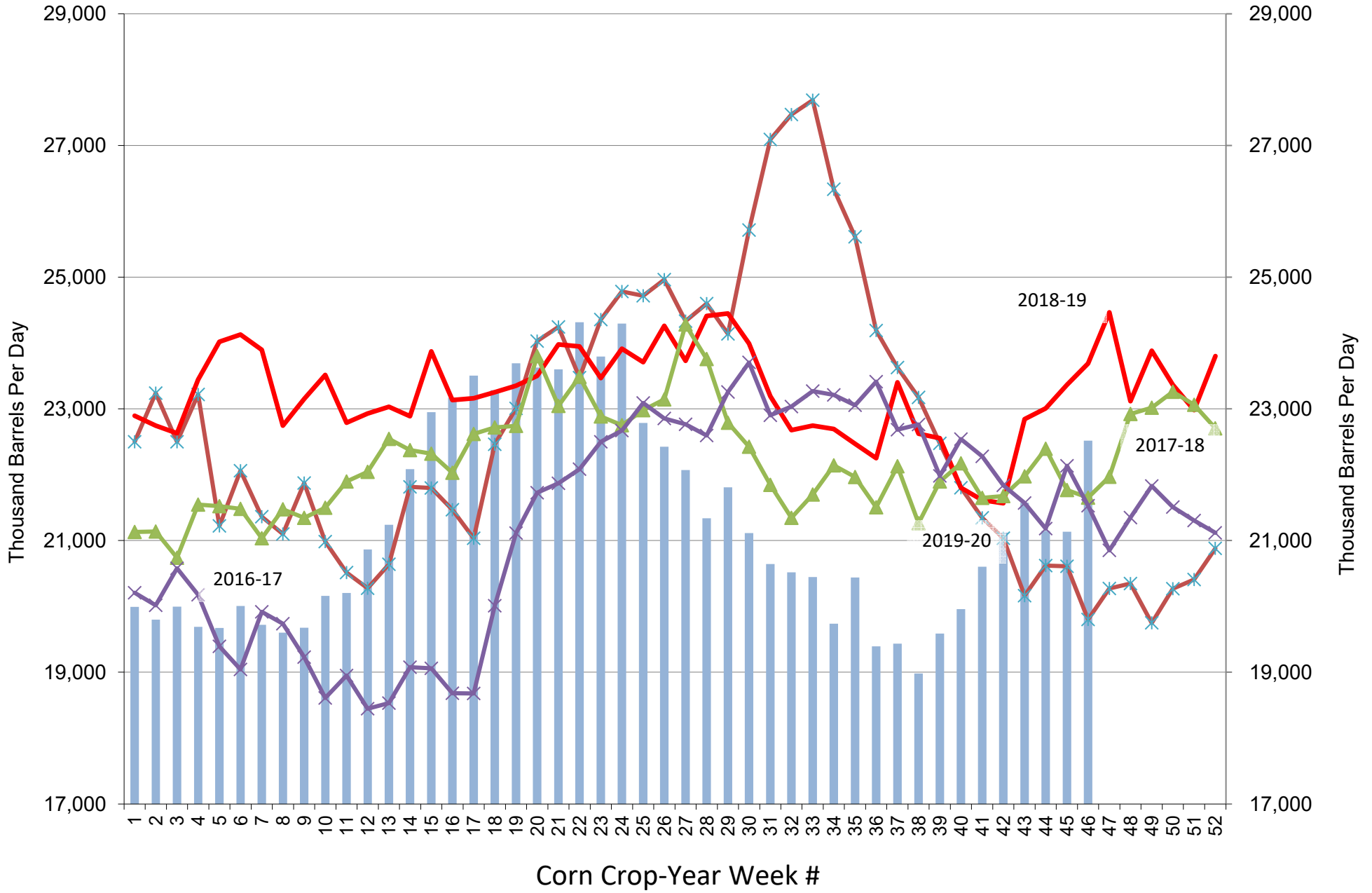


Source: EIA & FI

Stocks (1000bd)

Production (1000bd)

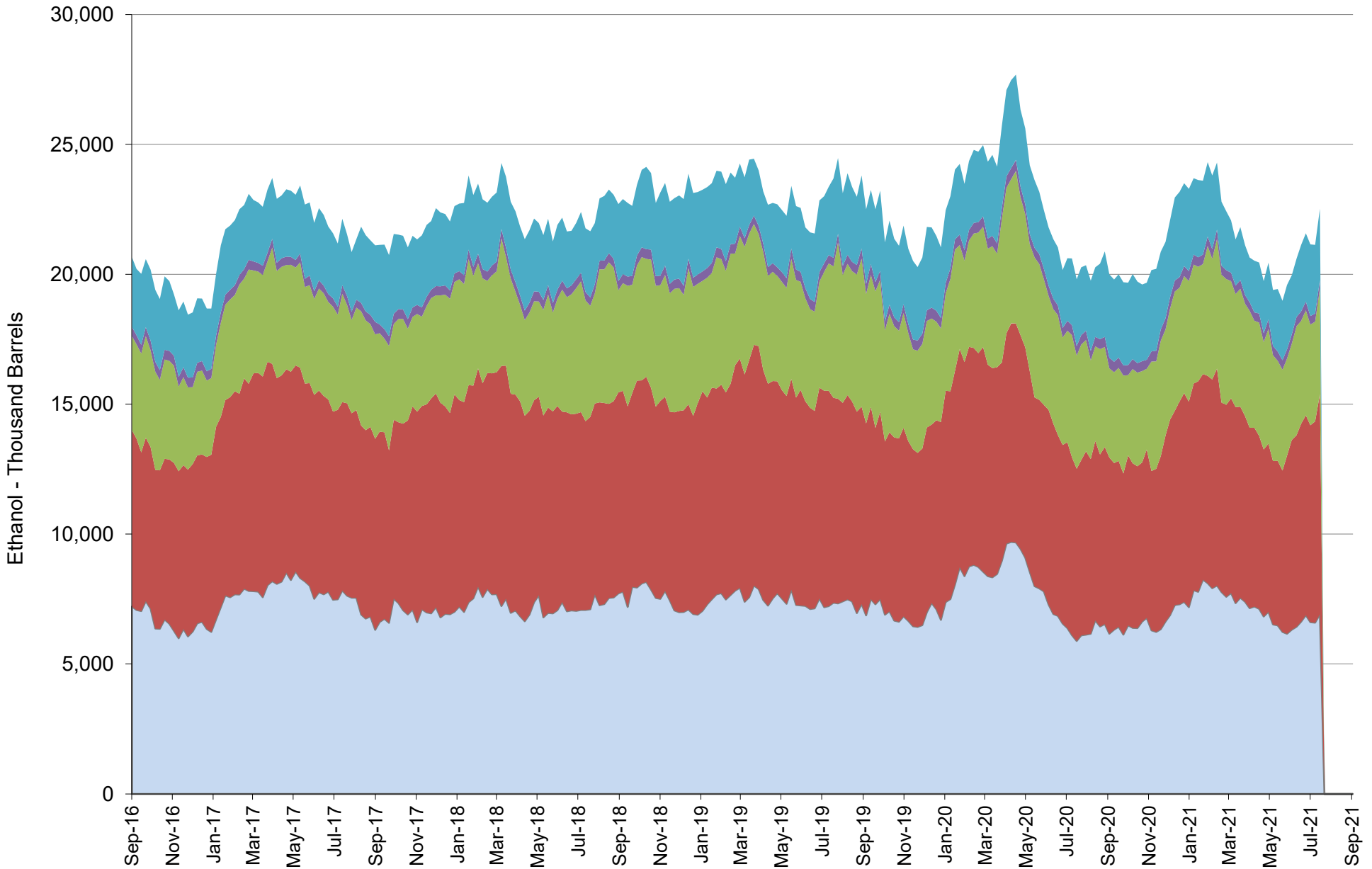
# US Weekly Ethanol Stocks (corn crop year)



Source: EIA & FI

■ 2020-21   
 —\* 2019-20   
 — 2018-19   
 —▲ 2017-18   
 —× 2016-17

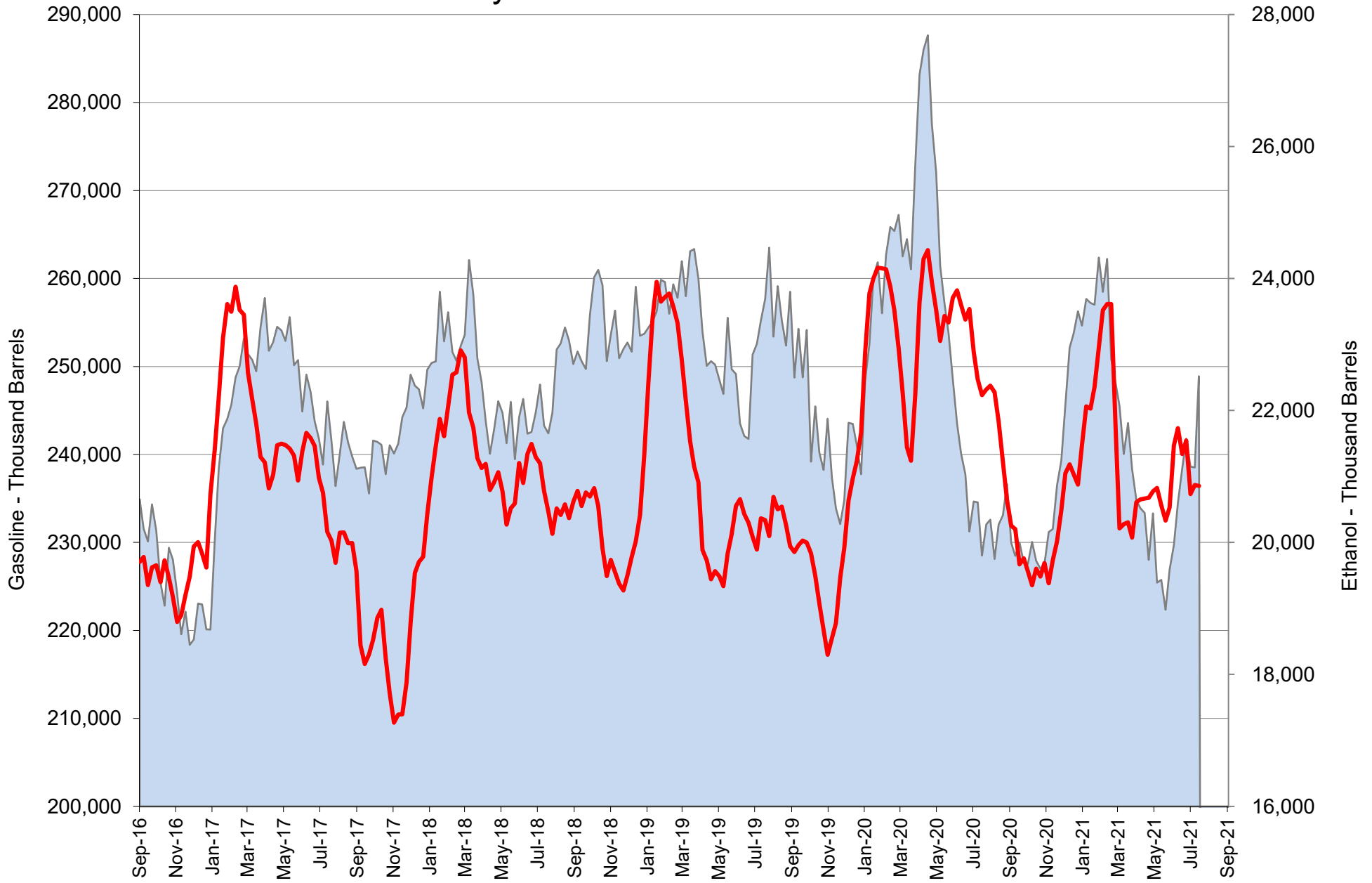
# US Weekly Ethanol Stocks by PADD



Source: EIA & FI

■ PADD1 ■ PADD2 ■ PADD3 ■ PADD4 ■ PADD5

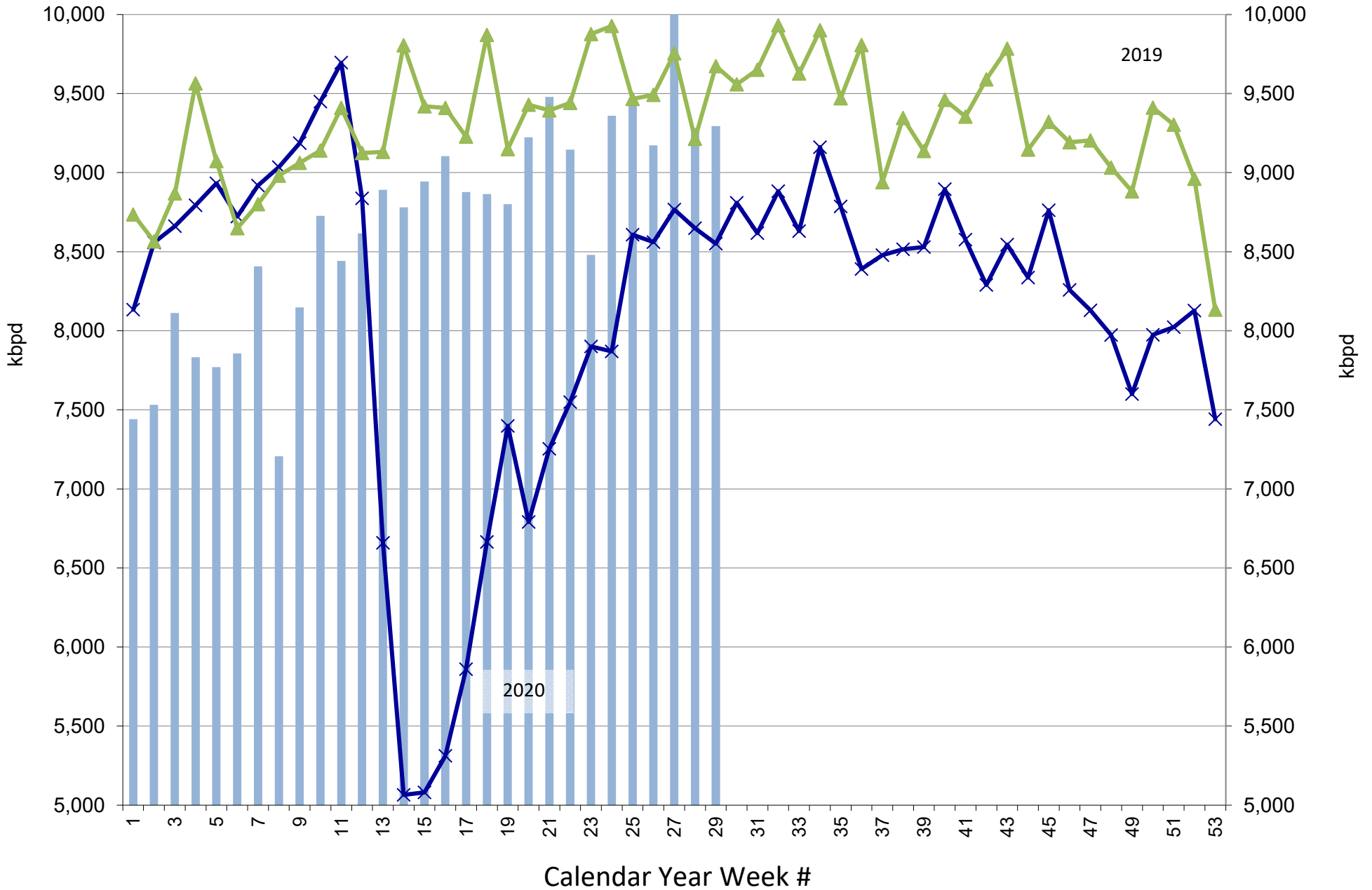
# US Weekly Gasoline and Ethanol Stocks



Source: EIA & FI

Stocks (1000bd) US Gasoline Ending Stocks (thousand barrels)

# US Weekly Gasoline Product Supplied



Source: EIA & FI

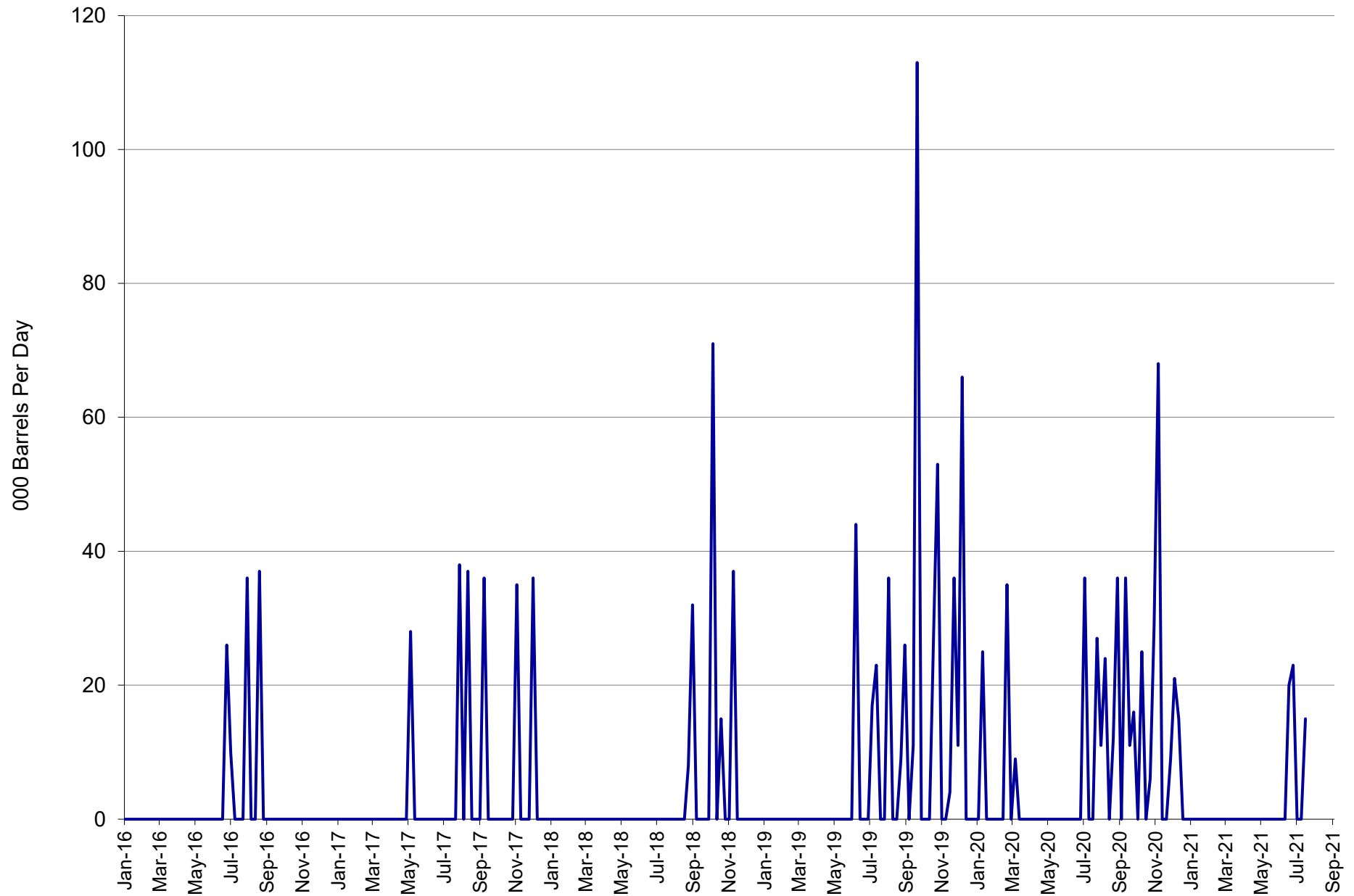
Gasoline Product Supplied (kbpd)

2020

2019



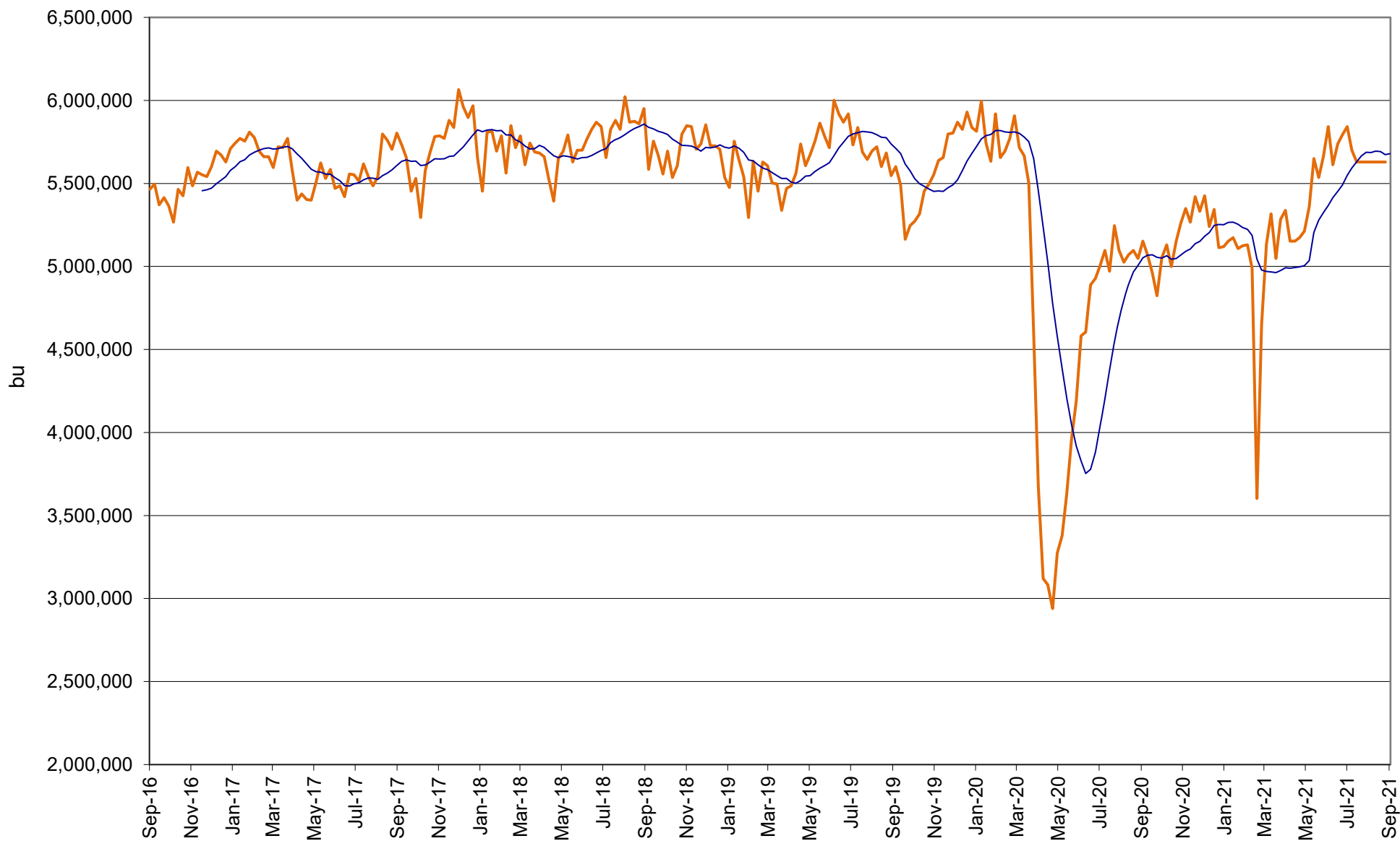
# US Weekly Ethanol Imports



Source: EIA & FI

— Imports (BPD)

# US Annualized Implied Corn Use

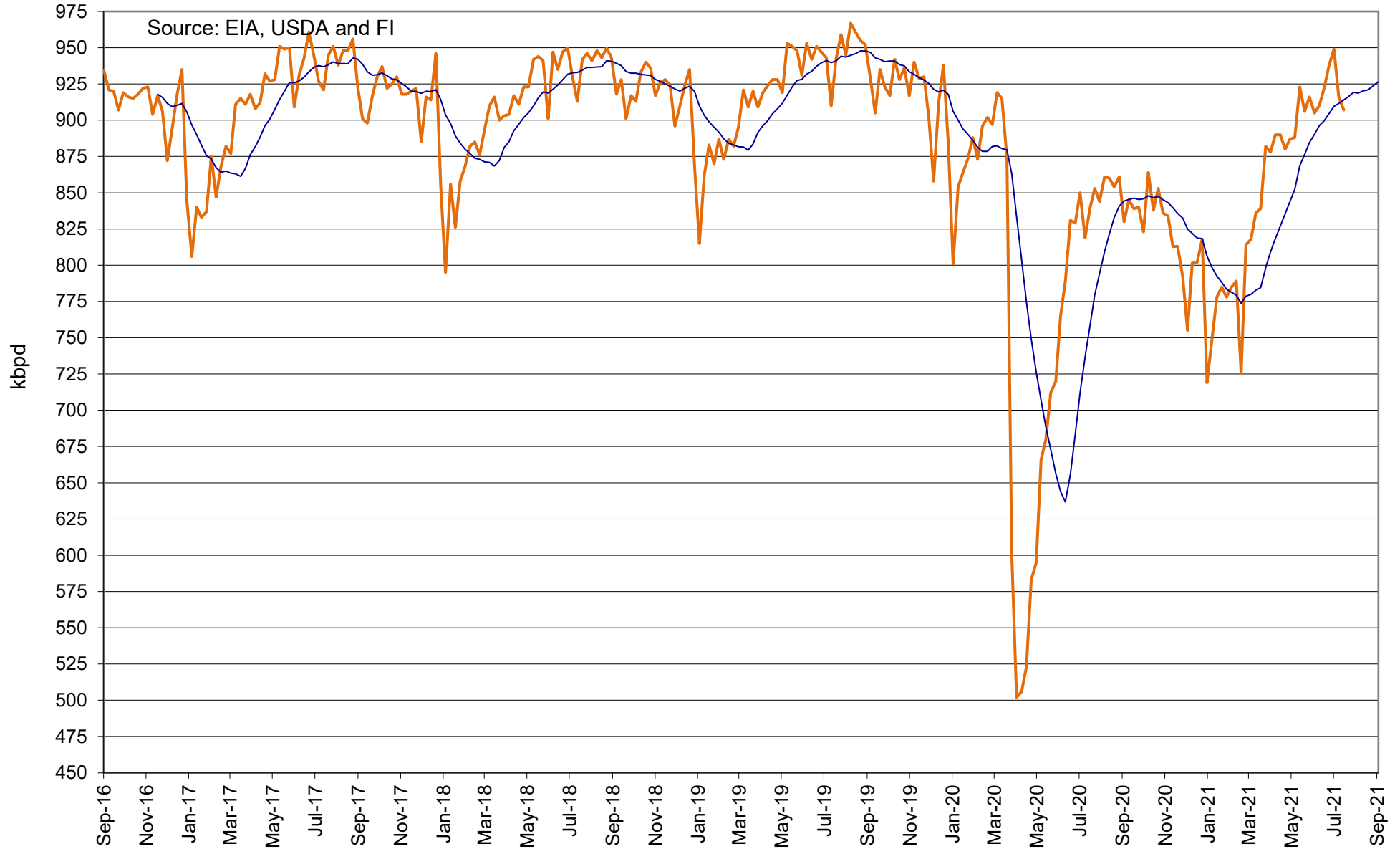


Source: EIA, USDA and FI

— US

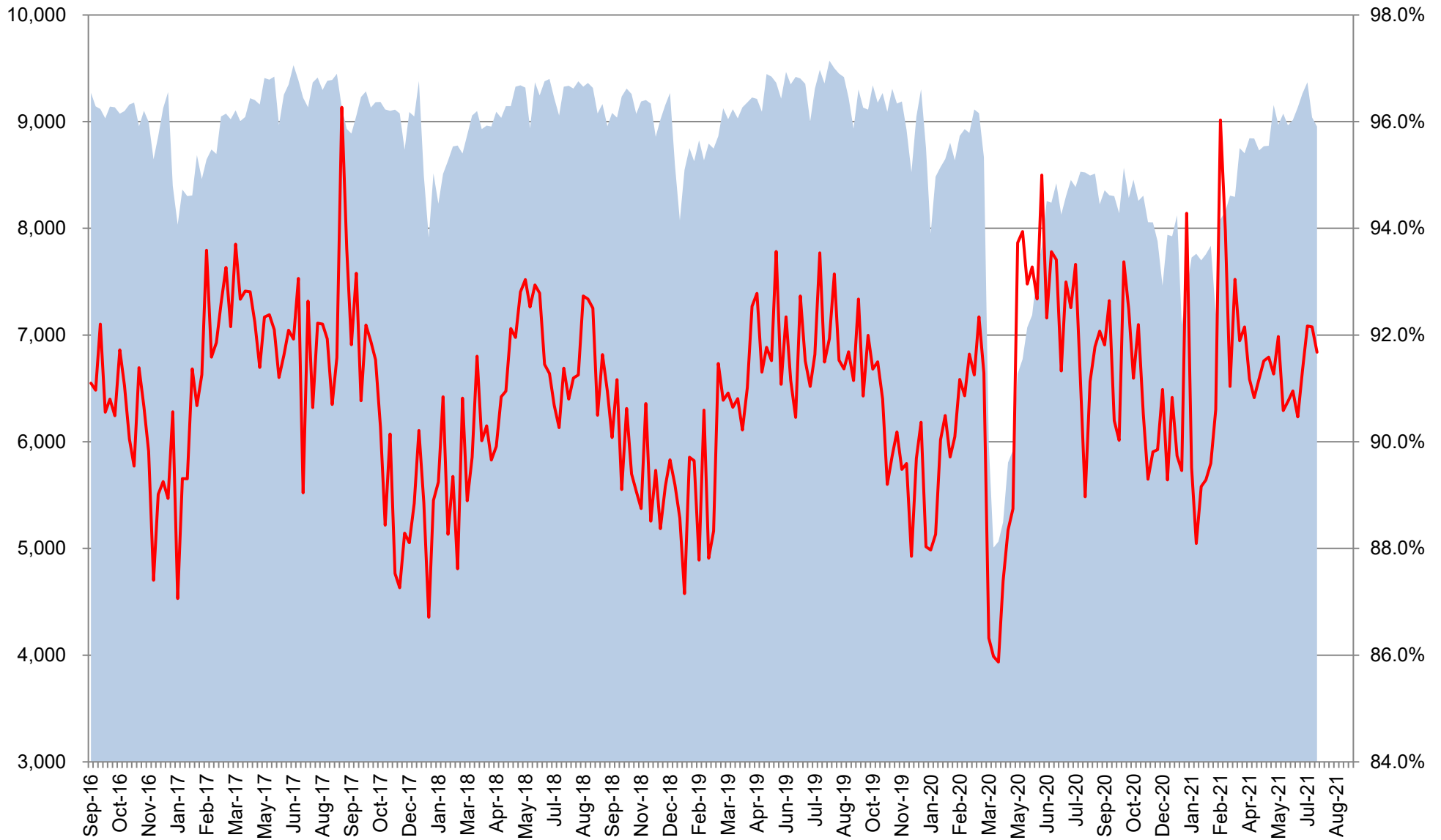
— 12 per. Mov. Avg. (US)

# Refinery and Blender Net Input of Oxygenates Fuel Ethanol



— Refinery and Blender Net Input of Oxygenates Fuel Ethanol — 12 per. Mov. Avg.

# US Net Blender Input of Fuel Ethanol and % Blend of Net Production of Finished Motor Gasoline

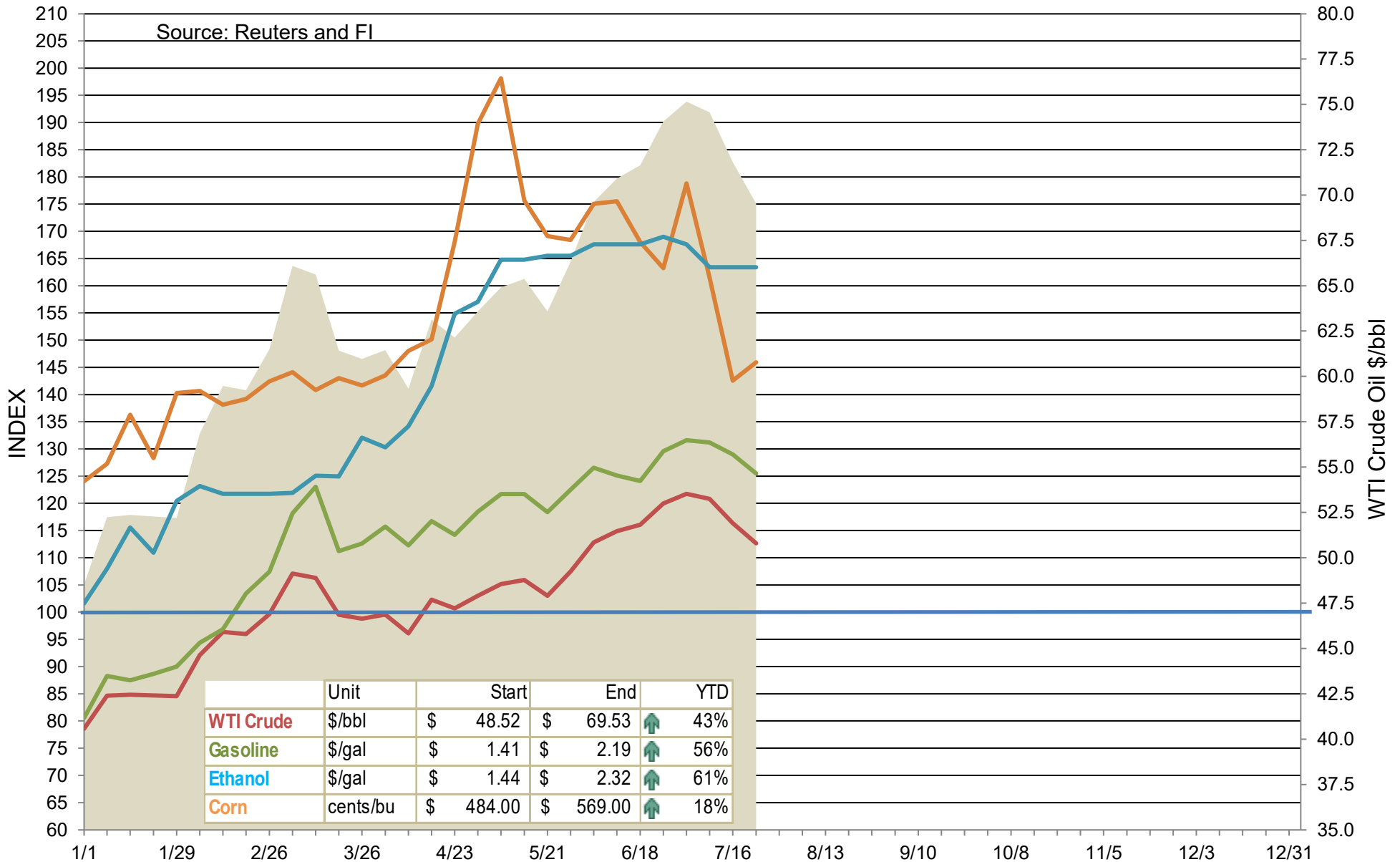


Source: EIA, USDA and FI

■ Total Blend Etoh

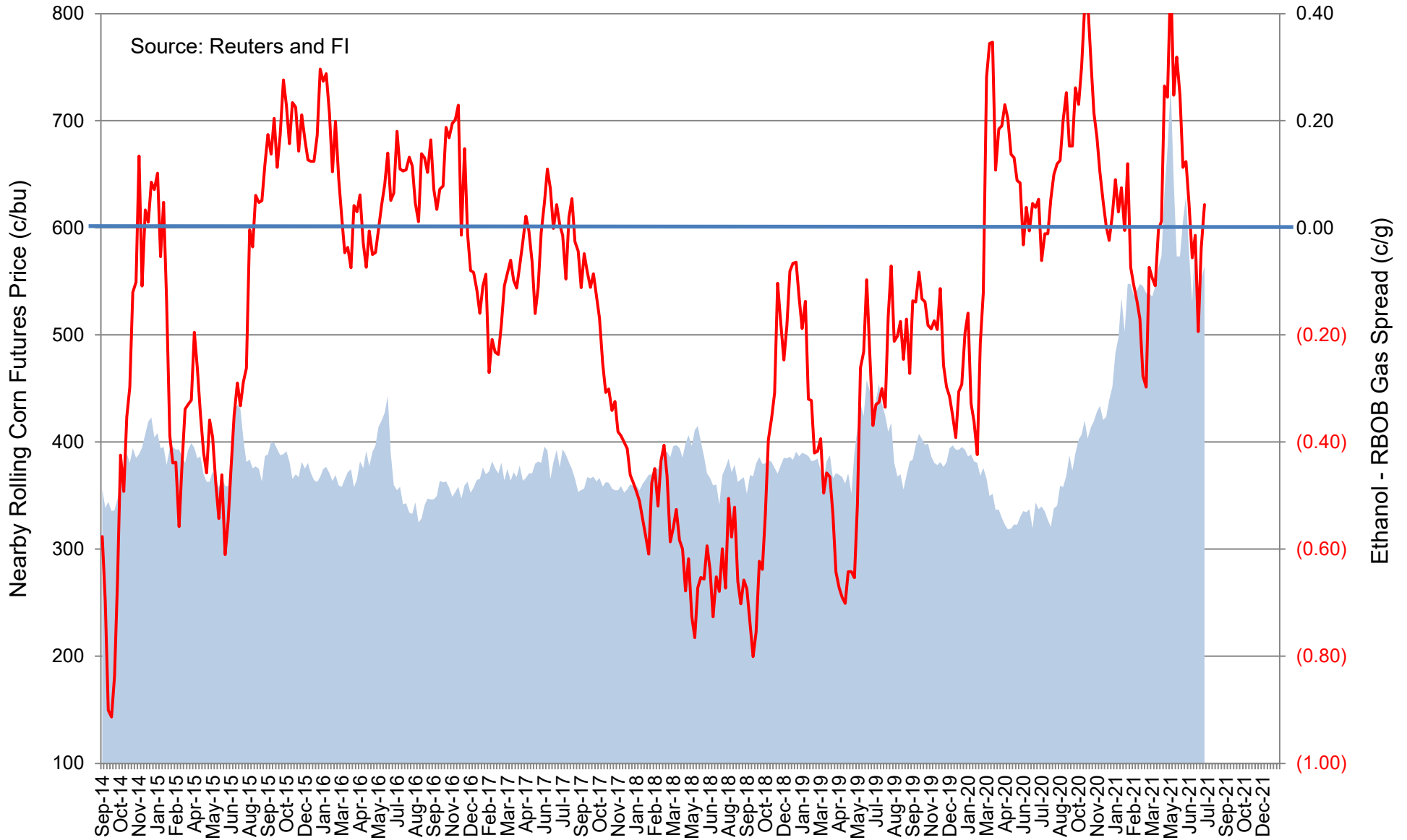
— Etoh Blend %

# Indexed Commodity Prices Starting January 2021 versus WTI Crude Nearby Futures



■ WTI Crude \$/bbl   
 — WTI Crude Index   
 — Gasoline Index   
 — Corn Index   
 — Ethanol Index

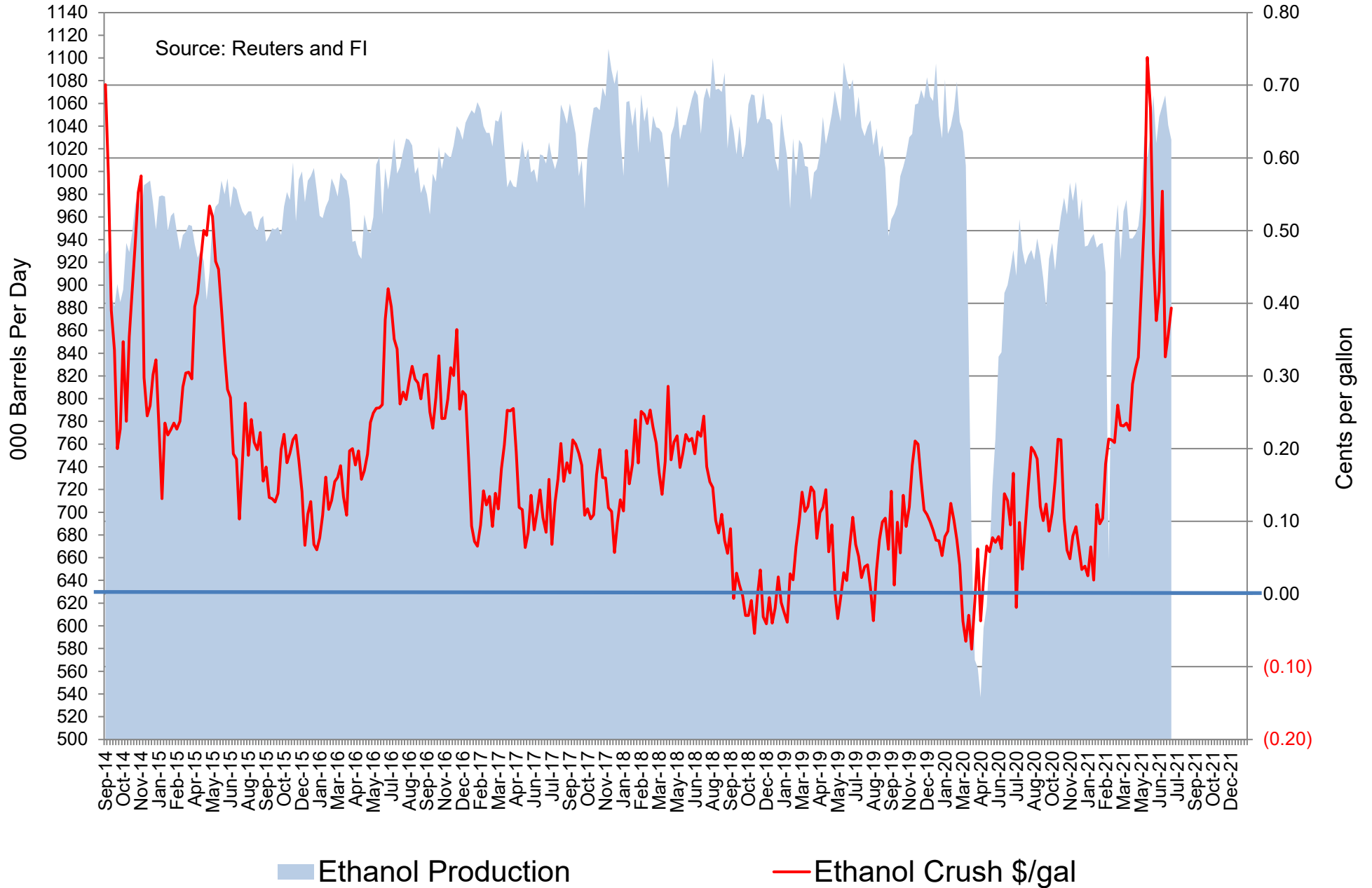
# CBOT Second Month Corn Futures versus Second Month Ethanol - RBOB Futures Spread



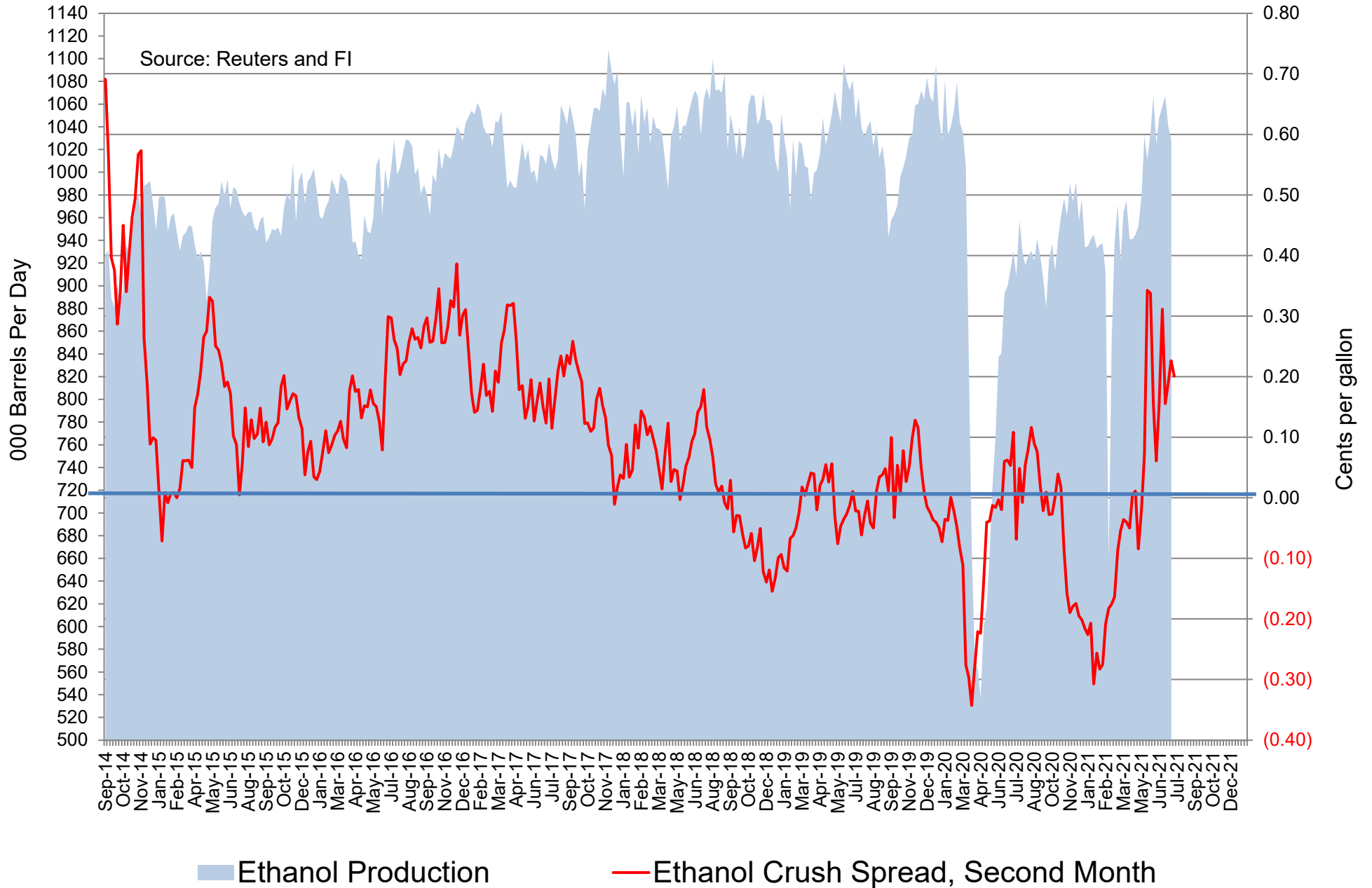
■ Nearby CBOT corn

— Rolling 2nd Month Ethanol-RBOB Spread

# CBOT Second Month Corn Crush Spread versus Weekly Ethanol Production (uses Chicago ethanol and IL DDGS w/ implied costs)

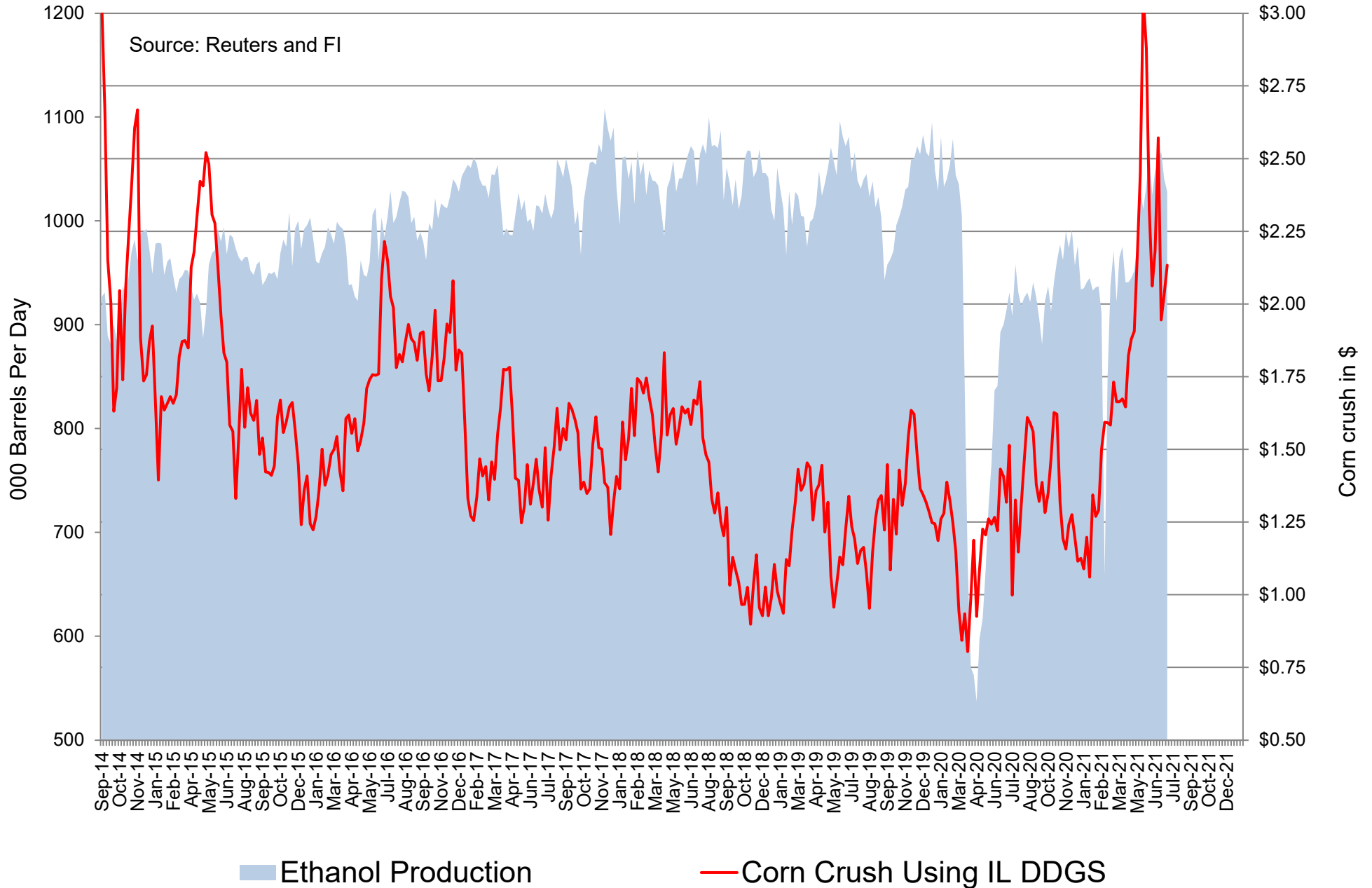


# Chicago Platts Second Month Corn Crush Spread versus Weekly Ethanol Production (Straight Calculation)





# CBOT Second Month Corn Crush Spread with IL DDGS versus Weekly Ethanol Production (straight 3-commodity calculation)



# Disclaimer

TO CLIENTS/PROSPECTS OF FUTURES INTERNATIONAL, SEE RISK DISCLOSURE BELOW:

THIS COMMUNICATION IS CONVEYED AS A SOLICITATION FOR ENTERING INTO A DERIVATIVES TRANSACTION.

Any trading recommendations and market or other information to Customer by Futures International (FI), although based upon information obtained from sources believed by FI to be reliable may not be accurate and may be changed without notice to customer. FI makes no guarantee as to the accuracy or completeness of any of the information or recommendations furnished to Customer. Customer understands that FI, its managers, employees and/or affiliates may have a position in commodity futures, options or other derivatives which may not be consistent with the recommendations furnished by FI to Customer.

The risk of trading futures and options and other derivatives involves a substantial risk of loss and is not suitable for all persons. In purchasing an option, the risk is limited to the premium paid, and all commissions and fees involved with the trade. When an option is shorted or written, the writer of the option has unlimited risk with respect to the option written. The use of options strategies such as a straddles and strangles involve multiple option positions and may substantially increase the amount of commissions and fees paid to execute the strategy. Option prices do not necessarily move in tandem with cash or futures prices. Each person must consider whether a particular trade, combination of trades or strategy is suitable for that person's financial means and objectives.

This material may include discussions of seasonal patterns, however, futures prices have already factored in the seasonal aspects of supply and demand, and seasonal patterns are no indication of future market trends. Finally, past performance is not indicative of future results.

This communication may contain links to third party websites which are not under the control of FI and FI is not responsible for their content. Products and services are offered only in jurisdictions where solicitation and sale are lawful, and in accordance with applicable laws and regulations in each such jurisdiction.