

	Current	Δ from YD	Δ from 7D Avg
Nat Gas Prompt	\$ 3.95	▲ \$ 0.07	▲ \$ 0.24

	Current	Δ from YD	Δ from 7D Avg
WTI Prompt	\$ 68.02	▲ \$ 0.60	▼ \$ (2.6)

	Current	Δ from YD	Δ from 7D Avg
Brent Prompt	\$ 70.28	▲ \$ 0.93	▼ \$ (2.1)

Page Menu

[Short-term Weather Model Outlooks](#)

[Lower 48 Component Models](#)

[Regional S/D Models Storage Projection](#)

[Weather Model Storage Projection](#)

[Supply – Demand Trends](#)

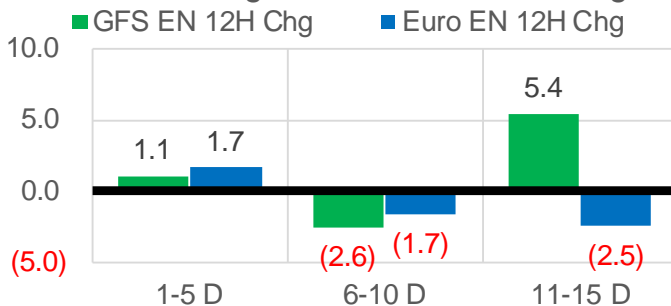
[Nat Gas Options Volume and Open Interest](#)

[Nat Gas Futures Open Interest](#)

[Price Summary](#)

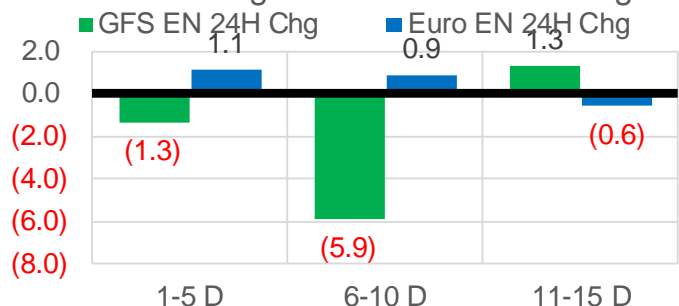
Vs. 12H Ago

L48 Region - 00z TDD vs 12H Ago



Vs. 24H Ago

L48 Region - 00z TDD vs 24H Ago



	Current	Δ from YD	Δ from 7D Avg
US Dry Production	90.3	▼ -1.91	▼ -1.87

	Current	Δ from YD	Δ from 7D Avg
US Power Burns	39.4	▼ -1.53	▼ -0.57

	Current	Δ from YD	Δ from 7D Avg
US ResComm	8.4	▼ -0.05	▲ 0.17

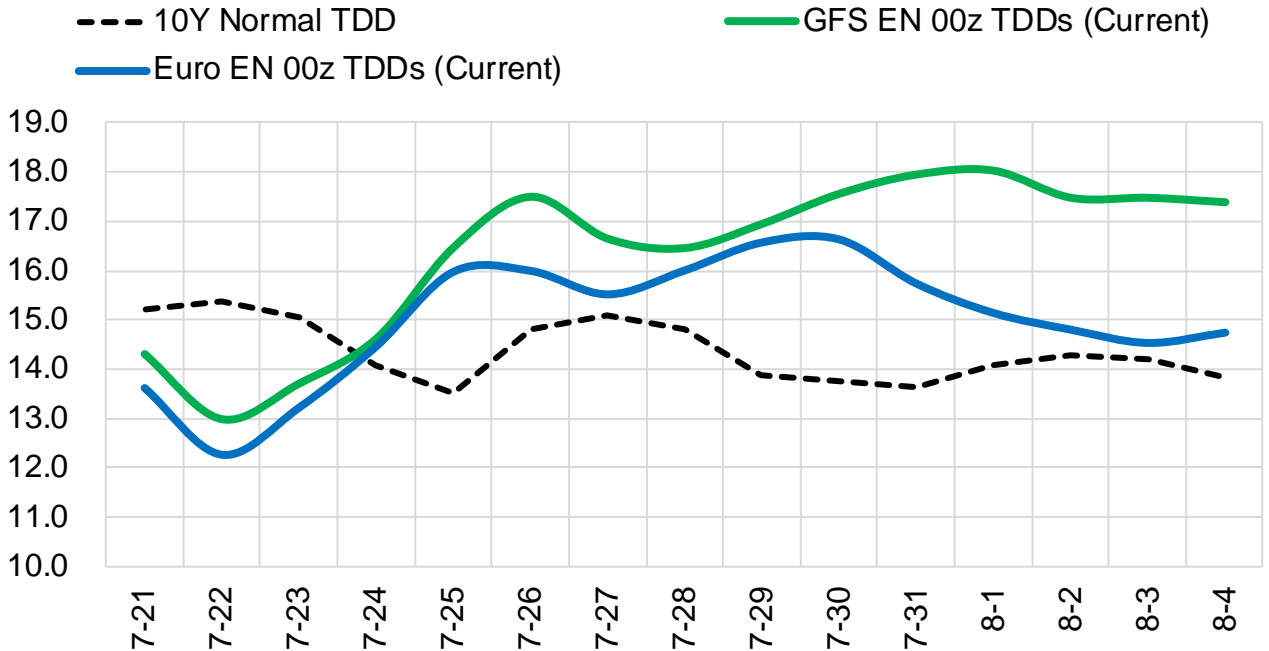
	Current	Δ from YD	Δ from 7D Avg
Canadian Imports	5.1	▼ -0.34	▼ -0.05

	Current	Δ from YD	Δ from 7D Avg
Net LNG Exports	9.6	▼ -0.73	▼ -1.12

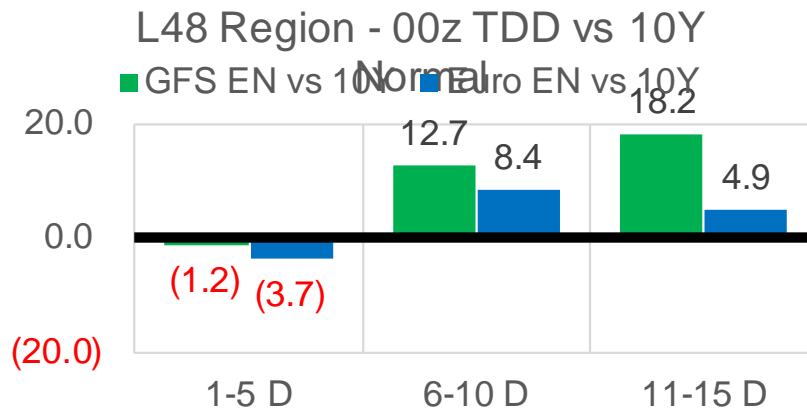
	Current	Δ from YD	Δ from 7D Avg
Mexican Exports	7.3	▼ -0.15	▲ 0.20

Short-term Weather Model Outlooks (00z)

L48 Region



Vs. 10Y Normal



Source: WSI , Bloomberg

Lower 48 Component Models

Daily Balances

	15-Jul	16-Jul	17-Jul	18-Jul	19-Jul	20-Jul	21-Jul	DoD	vs. 7D
Lower 48 Dry Production	92.1	92.0	92.4	92.1	92.4	92.2	90.3	▼ -1.9	▼ -1.9
Canadian Imports	5.3	4.9	4.7	4.8	5.0	5.4	5.1	▼ -0.3	▲ 0.0
L48 Power	41.2	40.7	38.5	38.3	40.3	41.0	39.4	▼ -1.5	▼ -0.6
L48 Residential & Commercial	8.5	8.4	7.9	7.9	8.3	8.5	8.4	▼ 0.0	▲ 0.2
L48 Industrial	20.0	20.1	20.2	20.2	20.3	20.0	19.8	▼ -0.2	▼ -0.3
L48 Lease and Plant Fuel	5.1	5.1	5.1	5.1	5.1	5.1	5.0	▼ -0.1	▼ -0.1
L48 Pipeline Distribution	2.3	2.3	2.2	2.2	2.3	2.3	2.3	▼ -0.1	▼ 0.0
L48 Regional Gas Consumption	77.1	76.6	73.9	73.7	76.2	76.9	75.0	▼ -1.9	▼ -0.7
Net LNG Delivered	11.02	11.03	10.67	10.52	10.21	10.30	9.57	▼ -0.7	▼ -1.1
Total Mexican Exports	7.2	7.1	6.8	6.6	7.0	7.4	7.3	▼ -0.2	▲ 0.2
Implied Daily Storage Activity	2.0	2.2	5.7	6.1	4.0	3.0	3.6		
EIA Reported Daily Storage Activity									
Daily Model Error									

EIA Storage Week Balances

	11-Jun	18-Jun	25-Jun	2-Jul	9-Jul	16-Jul	WoW	vs. 4W
Lower 48 Dry Production	92.9	92.3	93.2	92.2	91.8	92.3	▲ 0.5	▼ -0.1
Canadian Imports	4.8	5.1	4.7	5.2	5.1	5.2	▲ 0.1	▲ 0.2
L48 Power	34.6	34.8	34.4	39.7	37.1	38.7	▲ 1.6	▲ 2.2
L48 Residential & Commercial	8.5	8.3	8.4	8.3	8.0	8.2	▲ 0.3	▲ 0.0
L48 Industrial	21.4	22.4	20.0	21.5	20.0	20.1	▲ 0.1	▼ -0.9
L48 Lease and Plant Fuel	5.1	5.1	5.2	5.1	5.1	5.1	▲ 0.0	▲ 0.0
L48 Pipeline Distribution	2.1	2.1	2.1	2.4	2.1	2.2	▲ 0.1	▲ 0.0
L48 Regional Gas Consumption	71.8	72.7	70.1	77.0	72.3	74.3	▲ 2.0	▲ 1.3
Net LNG Exports	9.4	9.6	10.3	11.2	11.0	10.8	▼ -0.2	▲ 0.3
Total Mexican Exports	7.3	7.5	7.6	7.2	7.1	7.1	▲ 0.0	▼ -0.2
Implied Daily Storage Activity	9.1	7.6	10.0	2.0	6.5	5.2	-1.2	
EIA Reported Daily Storage Activity	2.3	7.9	10.9	2.3	7.9			
Daily Model Error	6.8	-0.2	-0.9	-0.3	-1.4			

Monthly Balances

	2Yr Ago Jul-19	LY Jul-20	Mar-21	Apr-21	May-21	Jun-21	MTD Jul-21	MoM	vs. LY
Lower 48 Dry Production	91.9	89.1	91.5	92.3	92.2	92.7	91.9	▼ -0.9	▲ 2.8
Canadian Imports	5.0	4.4	4.8	4.7	4.5	4.9	5.1	▲ 0.3	▲ 0.7
L48 Power	40.8	43.7	24.3	25.0	27.1	35.3	38.4	▲ 3.1	▼ -5.3
L48 Residential & Commercial	8.0	7.9	29.3	19.7	13.4	8.4	8.1	▼ -0.3	▲ 0.2
L48 Industrial	21.6	20.4	19.3	21.2	19.2	21.0	20.1	▼ -1.0	▼ -0.3
L48 Lease and Plant Fuel	5.0	4.9	5.0	5.1	5.1	5.1	5.1	▼ 0.0	▲ 0.2
L48 Pipeline Distribution	2.3	2.4	2.5	2.3	2.1	2.2	2.2	▲ 0.0	▼ -0.2
L48 Regional Gas Consumption	77.8	79.4	80.6	73.3	66.7	72.0	73.9	▲ 1.9	▼ -5.4
Net LNG Exports	6.0	3.3	11.1	11.5	10.8	10.2	10.8	▲ 0.6	▲ 7.5
Total Mexican Exports	5.3	5.9	6.5	6.7	6.8	7.4	7.1	▼ -0.3	▲ 1.2
Implied Daily Storage Activity	7.8	5.0	-2.0	5.5	12.4	8.0	5.2		
EIA Reported Daily Storage Activity									
Daily Model Error									

Source: Bloomberg, analytix.ai

Daily Average Generation Data

Nuclear Generation Daily Average - GWh (NRC)

	15-Jul	16-Jul	17-Jul	18-Jul	19-Jul	20-Jul	21-Jul	DoD	vs. 7D
NRC Nuclear Daily Output	91.8	90.9	90.9	91.2	91.7	91.8	91.8	0.0	0.4
NRC Nuclear Max Capacity	104.9	104.9	104.9	104.9	104.9	104.9	104.9	0.0	0.0
NRC Nuclear Outage	13.1	13.9	14.0	13.7	13.2	13.1	13.1	0.0	-0.4
NRC % Nuclear Cap Utilization	93.3	92.5	92.4	92.7	93.3	93.3	93.3	0.0	0.4

Wind Generation Daily Average - MWh (Genscape)

	15-Jul	16-Jul	17-Jul	18-Jul	19-Jul	20-Jul	21-Jul	DoD	vs. 7D
CAISO Wind	4583	4583	4583	4583	4583	4583	4583	0	0
ERCOT	19042	16685	11149	7936	6045	5997	1836	-4161	-9306
Genscape US Wind	42372	32921	29310	16924	15127	15127	15127	0	-10170

Generation Daily Average - MWh (Genscape)

	15-Jul	16-Jul	17-Jul	18-Jul	19-Jul	20-Jul	21-Jul	DoD	vs. 7D
Genscape US Wind	42372	32921	29310	16924	15127	15127	15127	0	-10170
Genscape US Solar	24390	30812	25902	16136	18472	18472	18472	0	-3892
Genscape US Other	5447	5808	5101	4893	4842	4842	4842	0	-314
Genscape US Coal	136413	138617	130998	127904	133411	133411	133411	0	-48
Genscape US Nuke	95660	94882	94804	95153	95642	95642	95642	0	345
Genscape US Hydro	22947	23439	23676	23882	23987	23987	23987	0	334
Genscape US Gas	244181	244961	228724	225334	229350	229350	229350	0	-4300

See National Wind and Nuclear daily charts

Source: Bloomberg, analytix.ai

Storage Week Average Generation Data

Nuclear Generation Weekly Average - GWh (NRC)

	11-Jun	18-Jun	25-Jun	2-Jul	9-Jul	16-Jul	WoW	WoW Bcf/d Impact
NRC Nuclear Daily Output	88.6	86.7	89.9	89.1	89.5	90.6	1.1	-0.2
NRC Nuclear Max Capacity	104.9	104.9	104.9	104.9	104.9	104.9	0.0	
NRC Nuclear Outage	16.3	18.1	15.0	15.7	15.4	14.3	-1.1	
NRC % Nuclear Cap Utilization	0.1	0.1	0.1	0.1	0.1	0.1	0.0	

Wind Generation Weekly Average - MWh (Genscape)

	11-Jun	18-Jun	25-Jun	2-Jul	9-Jul	16-Jul	WoW	WoW Bcf/d Impact
CAISO Wind	4607	3723	3254	4655	4583	4583	0	0.0
ERCOT	17072	10749	16549	10225	6583	13940	7357	-1.2
Genscape US Wind	43337	32707	50972	25398	24364	36668	12304	-2.1

Generation Weekly Average - MWh (Genscape)

	11-Jun	18-Jun	25-Jun	2-Jul	9-Jul	16-Jul	WoW	WoW Bcf/d Impact
Genscape US Wind	43337	32707	50972	25398	24364	36668	12304	-2.1
Genscape US Solar	15643	7817	12070	24039	15619	21148	5528	-0.9
Genscape US Other	5942	5201	4746	4728	4754	5151	397	-0.1
Genscape US Coal	118938	120230	118888	132762	121436	126462	5026	-0.8
Genscape US Nuke	92667	90822	93987	93205	93419	94570	1151	-0.2
Genscape US Hydro	32469	29459	30022	24181	23145	22869	-277	0.0
Genscape US Gas	212241	210769	202074	238370	218250	227817	9568	

See National Wind and Nuclear daily charts

Source: Bloomberg, analytix.ai

Monthly Average Generation Data

Nuclear Generation Monthly Average - GWh (NRC)

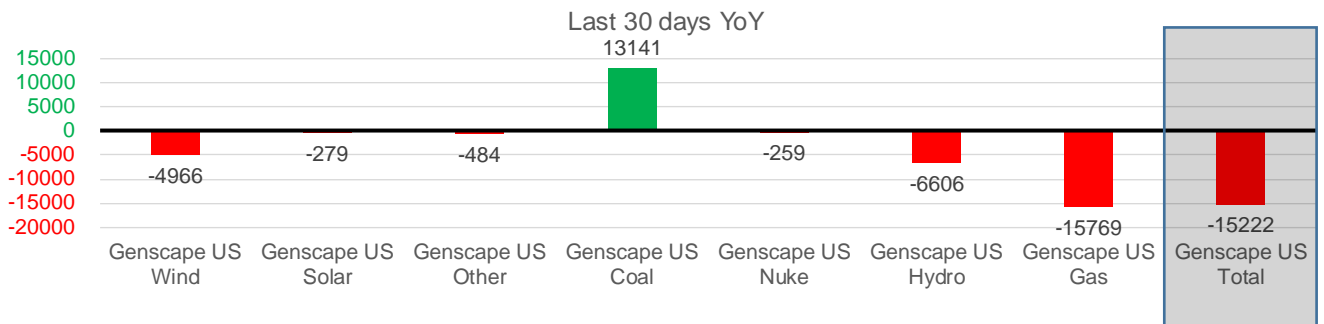
	2Yr Ago	LY					MTD	Last 30 days	MoM (MTD vs LY)	Last 30 days YoY
	Same 30 days	Same 30 days	Apr-21	May-21	Jun-21	Jul-21				
NRC Nuclear Daily Output	95.0	91.9	75.9	81.8	88.7	90.4	90.1	1.6	-1.8	
NRC Nuclear Max Capacity	104.9	104.9	104.9	104.9	104.9	104.9	104.9	0.0	0.0	
NRC Nuclear Outage	9.9	13.0	29.0	23.1	16.2	14.5	14.8	-1.6	1.8	
NRC % Nuclear Cap Utilization	96.6	93.4	77.1	83.2	90.2	91.9	91.6	1.7	-1.8	

Wind Generation Monthly Average - MWh (Genscape)

	2Yr Ago	LY					MTD	Last 30 days	MoM (MTD vs LY)	Last 30 days YoY
	Same 30 days	Same 30 days	Apr-21	May-21	Jun-21	Jul-21				
CAISO Wind	3516	3388	4009	3984	3994	4583	4442	589	1053	
ERCOT	10456	13994	13820	15379	12995	9497	10592	-3498	-3402	
Genscape US Wind	30425	34768	50942	46211	36758	27254	29802	-9504	-4966	

Generation Monthly Average - MWh (Genscape)

	2Yr Ago	LY					MTD	Last 30 days	MoM (MTD vs LY)	Last 30 days YoY
	Same 30 days	Same 30 days	Apr-21	May-21	Jun-21	Jul-21				
Genscape US Wind	30425	34768	50942	46211	36758	27254	29802	▲ 2547.6	▼ -4966	
Genscape US Solar	21555	19920	11261	15499	14357	19428	19641	▲ 213	▼ -279	
Genscape US Other	4964	5355	4512	5256	5178	4960	4871	▼ -89	▼ -484	
Genscape US Coal	138264	113826	73683	87336	119945	127146	126967	▼ -178	▲ 13141	
Genscape US Nuke	97116	94343	79842	85659	92805	94317	94084	▼ -233	▼ -259	
Genscape US Hydro	32551	30676	27386	27514	29334	23267	24070	▲ 803	▼ -6606	
Genscape US Gas	226721	240522	152976	160888	212447	225886	224753	▲ 6627	▼ -15769	
Genscape US Total	551596	539409	400602	428362	510825	522258	524187	▲ 10705	▼ -15222	



See National Wind and Nuclear daily charts

Source: Bloomberg, analytix.ai

Regional S/D Models Storage Projection

Week Ending 16-Jul

	Daily Raw Storage	Daily Adjustment Factor	Daily Average Storage Activity (Adjusted) *	Weekly Adjusted Storage Activity
L48	4.9	1.4	6.3	44
East	1.5	1.6	3.0	21
Midwest	3.5	-0.2	3.3	23
Mountain	4.6	-4.1	0.5	4
South Central	-4.4	3.9	-0.5	-3
Pacific	-0.3	0.1	-0.1	-1

*Adjustment Factor is calculated based on historical regional deltas

U.S. underground natural gas storage facilities by type (July 2015)

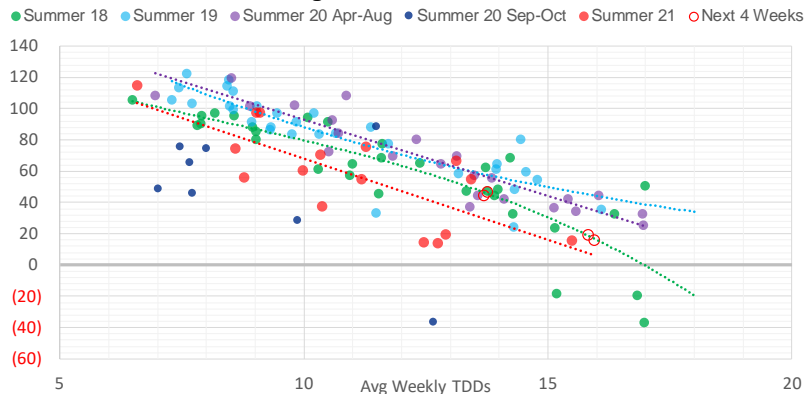


Weather Model Storage Projection

Next report
and beyond

Week Ending	GWDDs	Week Storage Projection
16-Jul	13.7	44
23-Jul	13.8	46
30-Jul	16.0	15
06-Aug	15.8	19

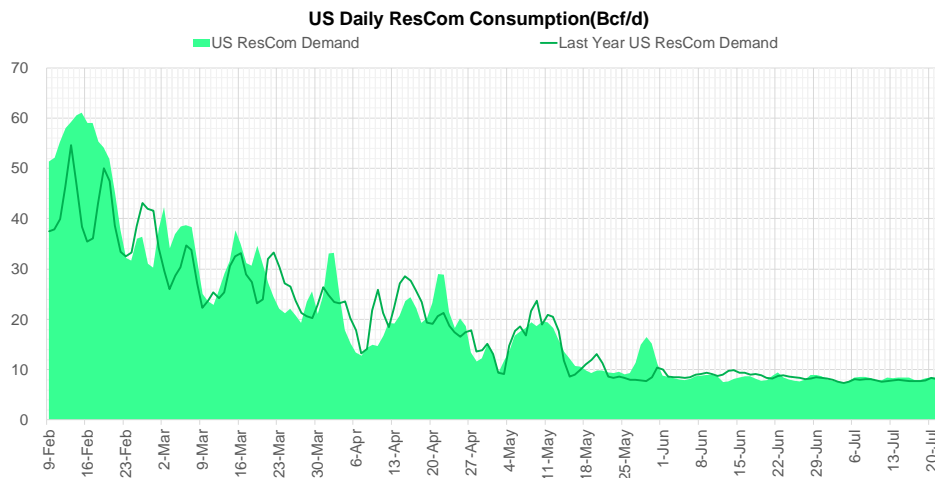
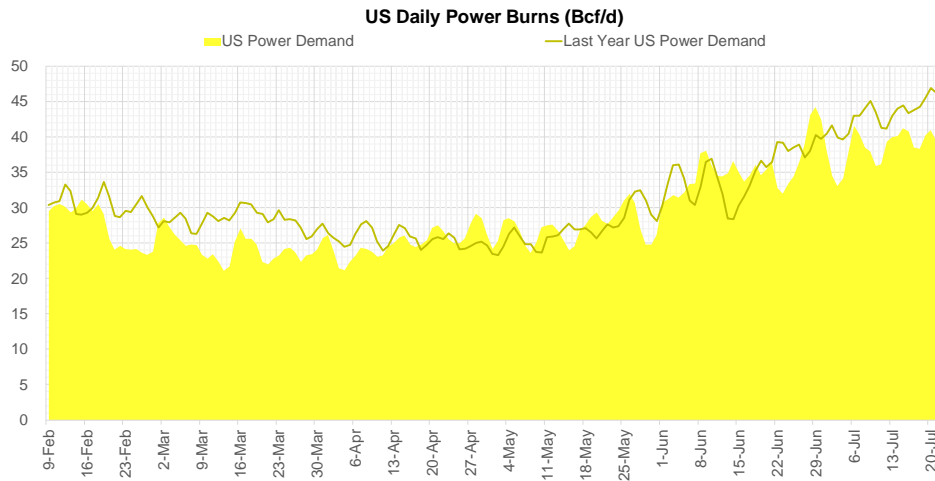
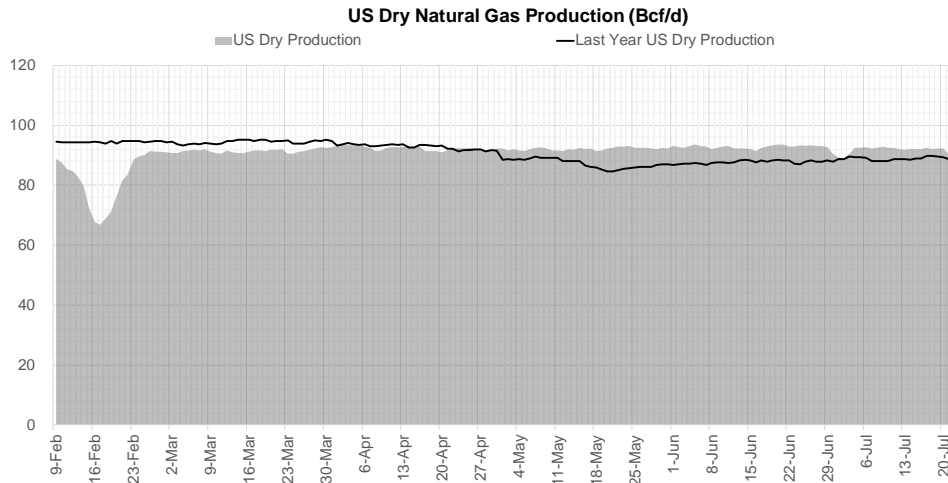
Weather Storage Model - Next 4 Week Forecast



Go to larger image



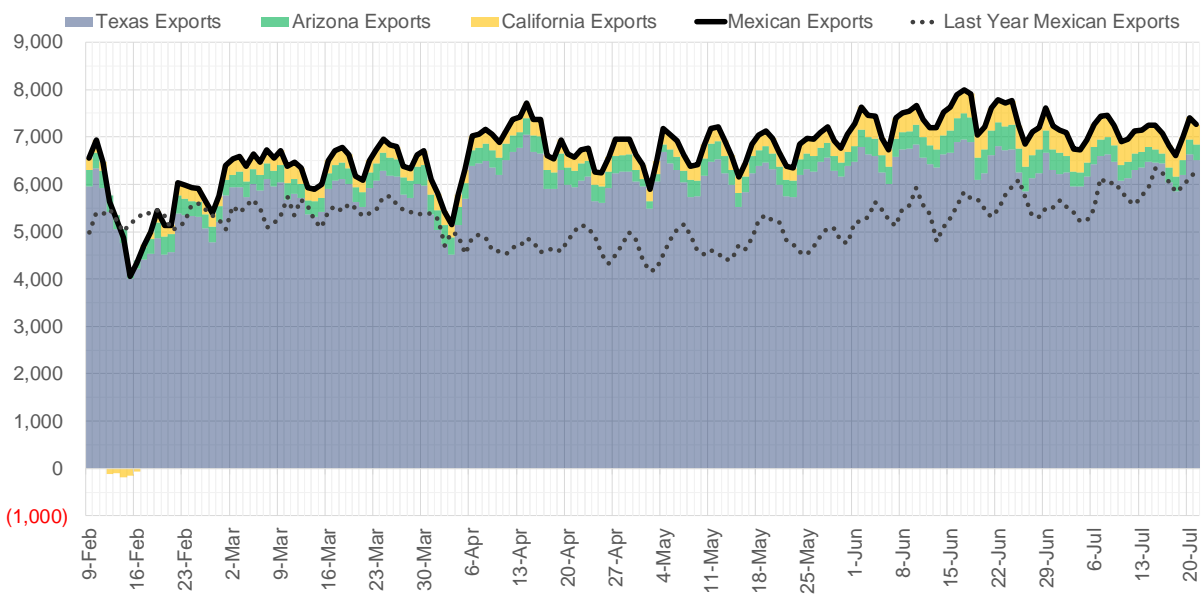
Supply – Demand Trends



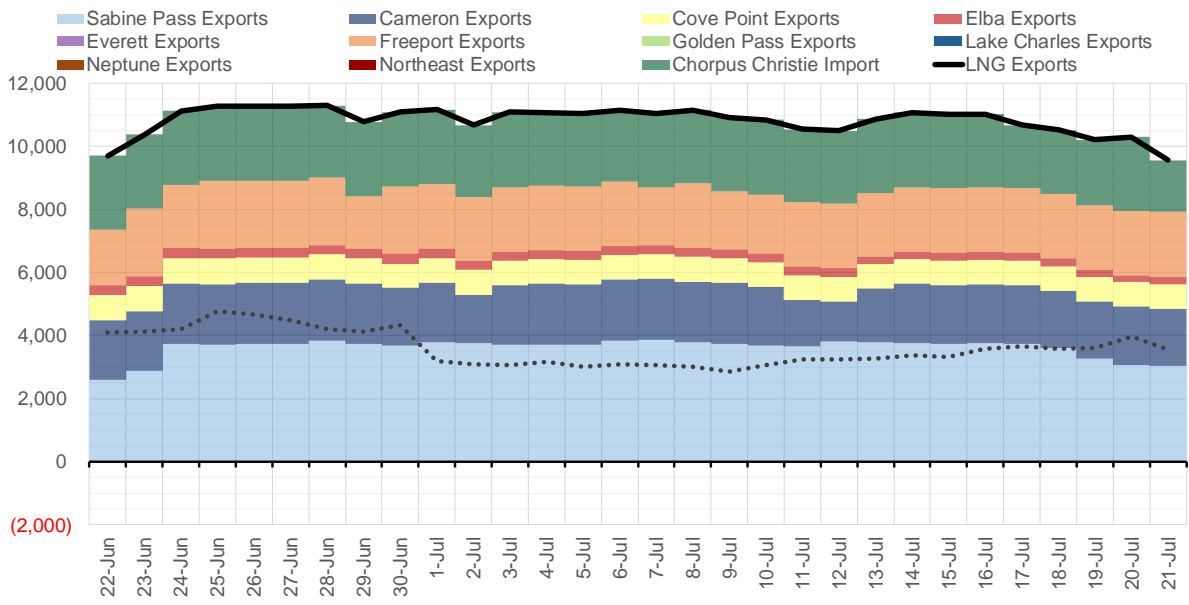
Source: Bloomberg

The risk of trading futures and options and other derivatives involves a substantial risk of loss and is not suitable for all persons. Each person must consider whether a particular trade, combination of trades, or strategy is suitable for that person's financial means and objectives. Past results are not necessarily indicative of future results. This communication may contain links to third party websites which are not under the control of and are not maintained by ION Energy Group, and ION Energy Group is not responsible for their content.

Mexican Exports (MMcf/d)



Net LNG Exports - Last 30 days (MMcf/d)



Source: Bloomberg

The risk of trading futures and options and other derivatives involves a substantial risk of loss and is not suitable for all persons. Each person must consider whether a particular trade, combination of trades, or strategy is suitable for that person's financial means and objectives. Past results are not necessarily indicative of future results. This communication may contain links to third party websites which are not under the control of and are not maintained by ION Energy Group, and ION Energy Group is not responsible for their content.

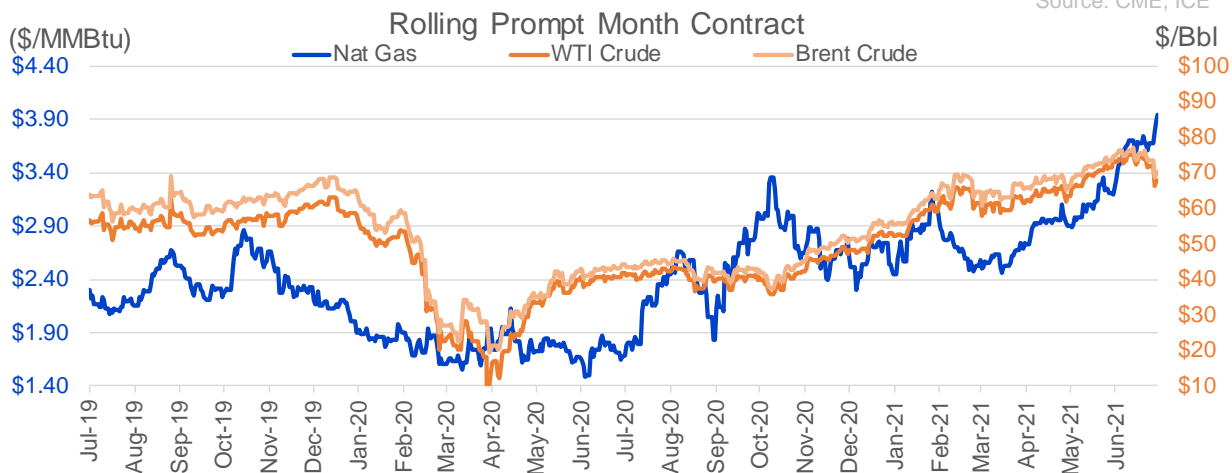
Nat Gas Options Volume and Open Interest CME, ICE and Nasdaq Combined

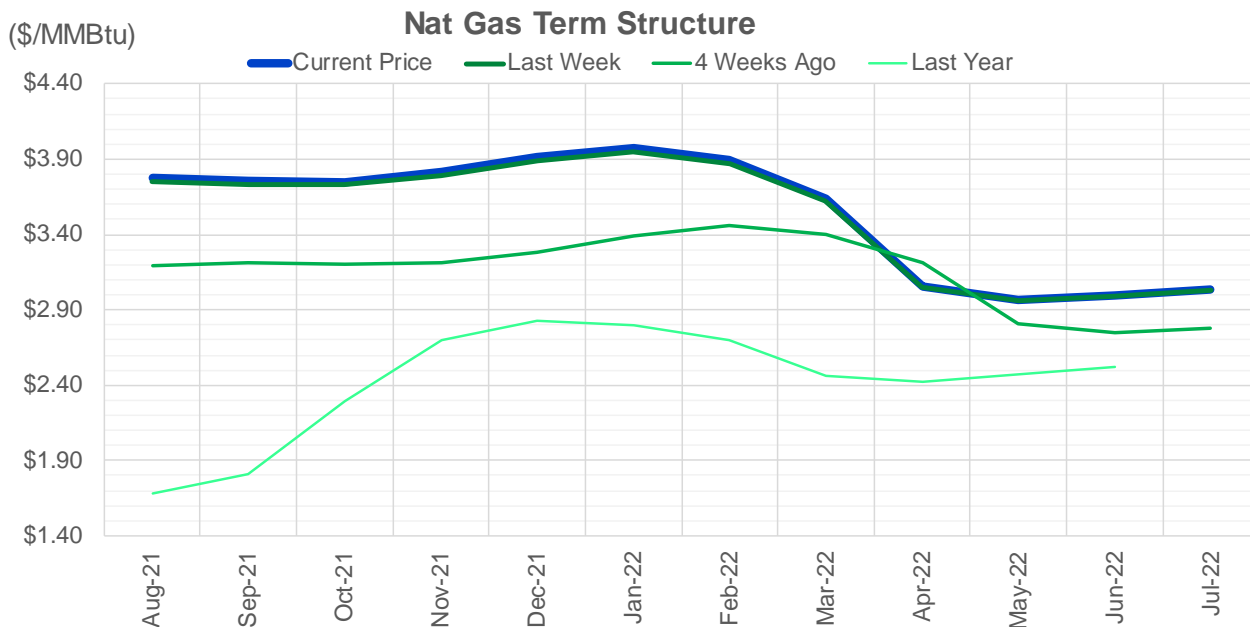
CONTRACT MONTH	CONTRACT YEAR	PUT/CALL	STRIKE	CUMULATIVE VOL	CONTRACT MONTH	CONTRACT YEAR	PUT/CALL	STRIKE	CUMULATIVE OI
8	2021	C	4.00	10402	8	2021	C	4.00	48767
8	2021	C	4.25	8069	10	2021	C	4.00	43241
10	2021	P	3.50	5822	8	2021	C	3.50	40947
8	2021	C	5.00	5609	9	2021	C	4.00	35177
8	2021	C	4.50	5315	10	2021	C	5.00	34299
8	2021	P	3.60	5020	10	2021	C	3.50	34019
8	2021	P	3.50	4164	10	2021	P	2.50	31774
9	2021	C	4.00	3899	8	2021	P	2.50	29351
9	2021	C	4.50	3896	10	2021	C	3.25	28363
8	2021	C	4.75	3810	8	2021	P	3.00	27650
10	2021	P	3.25	3309	10	2021	P	2.75	26798
8	2021	C	3.90	3233	10	2021	P	2.00	26294
10	2021	C	4.50	3141	10	2021	C	4.50	25435
10	2021	C	4.00	3078	8	2021	P	3.25	24828
8	2021	C	3.85	2965	8	2021	C	3.75	24746
8	2021	C	3.95	2932	9	2021	P	2.50	23377
8	2021	C	3.75	2907	9	2021	C	3.50	23349
8	2021	P	3.75	2816	11	2021	C	4.00	23157
9	2021	C	4.25	2594	8	2021	C	3.25	23036
8	2021	P	3.65	2557	8	2021	C	4.50	22864
9	2021	P	3.25	2550	10	2021	P	3.00	22719
8	2021	P	3.80	2505	12	2021	C	4.00	21943
8	2021	C	4.40	2438	8	2021	P	3.50	21068
8	2021	C	4.10	2433	9	2021	P	3.00	21026
9	2021	P	3.60	2097	9	2021	P	2.00	20427
8	2021	P	3.70	2087	10	2021	P	2.25	19875
9	2021	C	3.85	2058	4	2022	C	3.00	19785
12	2021	P	3.50	1800	8	2021	P	2.00	19668
9	2021	P	3.50	1790	8	2021	P	2.90	19603
9	2021	C	4.75	1602	8	2021	P	2.25	19478
1	2023	C	5.00	1600	9	2021	C	3.25	18993
1	2023	C	6.00	1600	10	2021	C	3.00	18500
2	2023	C	5.00	1600	8	2021	P	2.75	18483
2	2023	C	6.00	1600	8	2021	P	3.40	17577
3	2023	C	5.00	1600	10	2021	P	3.50	16989
3	2023	C	6.00	1600	9	2021	C	4.50	16981
4	2023	C	5.00	1600	10	2021	C	3.75	16824
4	2023	C	6.00	1600	11	2021	P	3.00	16615
5	2023	C	5.00	1600	9	2021	C	4.25	16499
5	2023	C	6.00	1600	3	2022	C	5.00	15937
6	2023	C	5.00	1600	10	2021	C	6.00	15903
6	2023	C	6.00	1600	8	2021	C	3.00	15835
7	2023	C	5.00	1600	9	2021	P	2.75	15821
7	2023	C	6.00	1600	8	2021	C	3.30	15351
8	2023	C	5.00	1600	11	2021	C	3.75	15342
8	2023	C	6.00	1600	1	2022	C	4.00	14948
9	2023	C	5.00	1600	3	2022	C	3.00	14448
9	2023	C	6.00	1600	9	2021	C	5.00	13935
9	2023	C	6.00	1600	12	2021	P	2.00	13884
10	2023	C	5.00	1600	1	2022	C	5	13866

Source: CME, ICE

Nat Gas Futures Open Interest CME, and ICE Combined

CME Henry Hub Futures (10,000 MMBtu)				ICE Henry Hub Futures Contract Equivalent (10,000 MM			
	Current	Prior	Daily Change		Current	Prior	Daily Change
AUG 21	74027	85355	-11328	AUG 21	85177	90123	-4946
SEP 21	316462	311648	4814	SEP 21	88304	87872	432
OCT 21	157726	156040	1686	OCT 21	101766	100098	1668
NOV 21	107896	106752	1144	NOV 21	72145	73394	-1249
DEC 21	70435	70407	28	DEC 21	70907	70624	284
JAN 22	118467	119029	-562	JAN 22	77570	78363	-793
FEB 22	47889	47777	112	FEB 22	66796	67067	-271
MAR 22	98174	98885	-711	MAR 22	67866	68389	-523
APR 22	98941	98156	785	APR 22	64884	64922	-38
MAY 22	86773	85178	1595	MAY 22	67760	67459	300
JUN 22	27148	27471	-323	JUN 22	55546	55609	-63
JUL 22	21845	21738	107	JUL 22	54019	54161	-142
AUG 22	23631	23781	-150	AUG 22	55452	55407	45
SEP 22	23692	22911	781	SEP 22	55132	55107	25
OCT 22	60937	61347	-410	OCT 22	58707	59228	-521
NOV 22	25096	25119	-23	NOV 22	47708	47505	204
DEC 22	20998	20527	471	DEC 22	50210	50120	90
JAN 23	14254	13861	393	JAN 23	30207	29850	356
FEB 23	5463	5089	374	FEB 23	25494	25258	236
MAR 23	7573	7774	-201	MAR 23	28273	27863	411
APR 23	8926	8753	173	APR 23	22036	21689	347
MAY 23	5862	5796	66	MAY 23	23183	22761	423
JUN 23	2314	2285	29	JUN 23	21462	21046	417
JUL 23	2593	2460	133	JUL 23	21563	21139	425
AUG 23	1760	1585	175	AUG 23	21502	21056	446
SEP 23	1992	1940	52	SEP 23	21142	20703	439
OCT 23	2510	2412	98	OCT 23	22451	22013	438
NOV 23	1109	1109	0	NOV 23	20342	19913	429
DEC 23	1758	1758	0	DEC 23	21705	21325	380
JAN 24	793	793	0	JAN 24	12693	12506	187





	Aug-21	Sep-21	Oct-21	Nov-21	Dec-21	Jan-22	Feb-22	Mar-22	Apr-22	May-22	Jun-22	Jul-22
Current Price	\$3.779	\$3.754	\$3.751	\$3.812	\$3.916	\$3.975	\$3.892	\$3.642	\$3.058	\$2.966	\$2.996	\$3.032
Last Week	\$3.749	\$3.732	\$3.732	\$3.790	\$3.887	\$3.950	\$3.868	\$3.622	\$3.050	\$2.959	\$2.989	\$3.025
vs. Last Week	\$0.030	\$0.022	\$0.019	\$0.022	\$0.029	\$0.025	\$0.024	\$0.020	\$0.008	\$0.007	\$0.007	\$0.007
4 Weeks Ago	\$3.191	\$3.215	\$3.201	\$3.217	\$3.277	\$3.386	\$3.463	\$3.396	\$3.217	\$2.809	\$2.750	\$2.780
vs. 4 Weeks Ago	\$0.588	\$0.539	\$0.550	\$0.595	\$0.639	\$0.589	\$0.429	\$0.246	-\$0.159	\$0.157	\$0.246	\$0.252
Last Year	\$1.641	\$1.684	\$1.808	\$2.291	\$2.699	\$2.827	\$2.795	\$2.696	\$2.457	\$2.427	\$2.470	\$2.520
vs. Last Year	\$2.138	\$2.070	\$1.943	\$1.521	\$1.217	\$1.148	\$1.097	\$0.946	\$0.601	\$0.539	\$0.526	\$0.512

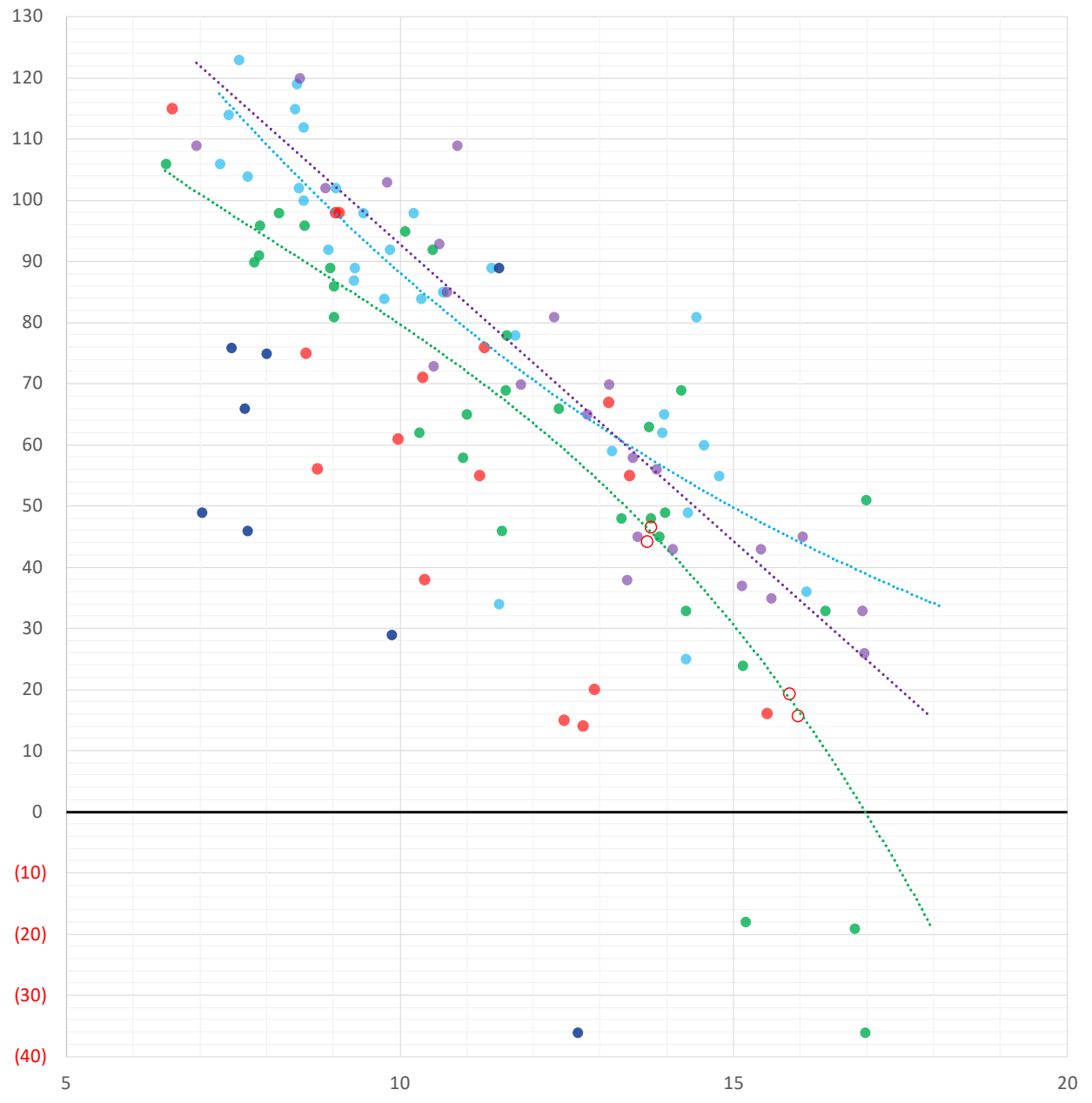
	Units	Cash Settled	Prompt Settle	Cash to Prompt
AGT Citygate	\$/MMBtu	3.43	3.40	-0.03
TETCO M3	\$/MMBtu	3.40	3.29	-0.11
FGT Zone 3	\$/MMBtu	3.30	3.77	0.47
Zone 6 NY	\$/MMBtu	3.30	3.25	-0.05
Chicago Citygate	\$/MMBtu	3.66	3.52	-0.14
Michcon	\$/MMBtu	3.66	3.47	-0.19
Columbia TCO Pool	\$/MMBtu	3.30	3.05	-0.25
Ventura	\$/MMBtu	3.62	3.46	-0.16
Rockies/Opal	\$/MMBtu	3.75	3.44	-0.31
El Paso Permian Basin	\$/MMBtu	3.60	3.56	-0.04
Socal Citygate	\$/MMBtu	7.11	5.02	-2.09
Malin	\$/MMBtu	3.90	4.04	0.14
Houston Ship Channel	\$/MMBtu	3.79	3.68	-0.11
Henry Hub Cash	\$/MMBtu	3.82	3.47	-0.35
AECO Cash	C\$/GJ	3.19	2.81	-0.38
Station2 Cash	C\$/GJ	3.08	3.86	0.78
Dawn Cash	C\$/GJ	3.69	3.50	-0.19

Source: CME, Bloomberg

	Units	Current Price	vs. Last Week	vs. 4 Weeks Ago	vs. Last Year
NatGas Jul21/Oct21	\$/MMBtu	0.232	▲ 0.165	▲ 0.214	▲ 0.214
NatGas Oct21/Nov21	\$/MMBtu	0.055	▼ -0.009	▼ -0.001	▲ 0.003
NatGas Oct21/Jan22	\$/MMBtu	0.207	▼ -0.028	▼ -0.029	▼ -0.077
NatGas Apr22/Oct22	\$/MMBtu	-0.016	▼ -0.009	▼ -0.042	▼ -0.083
WTI Crude	\$/Bbl	67.42	▼ -7.830	▼ -5.640	▲ 25.460
Brent Crude	\$/Bbl	69.35	▼ -7.140	▼ -5.460	▲ 25.030
Fuel Oil, NY Harbour 1%	\$/Bbl	97.18	▲ 0.000	▲ 0.000	▲ 0.000
Heating Oil	cents/Gallon	201.27	▼ -17.170	▼ -13.830	▲ 73.270
Propane, Mt. Bel	cents/Gallon	1.08	▼ -0.022	▲ 0.120	▲ 0.584
Ethane, Mt. Bel	cents/Gallon	0.31	▲ 0.006	▲ 0.036	▲ 0.100
Coal, PRB	\$/MTon	12.30	▲ 0.000	▲ 0.000	▲ 0.000
Coal, PRB	\$/MMBtu	0.70			
Coal, ILB	\$/MTon	31.05	▲ 0.000	▲ 0.000	▲ 0.000
Coal, ILB	\$/MMBtu	1.32			

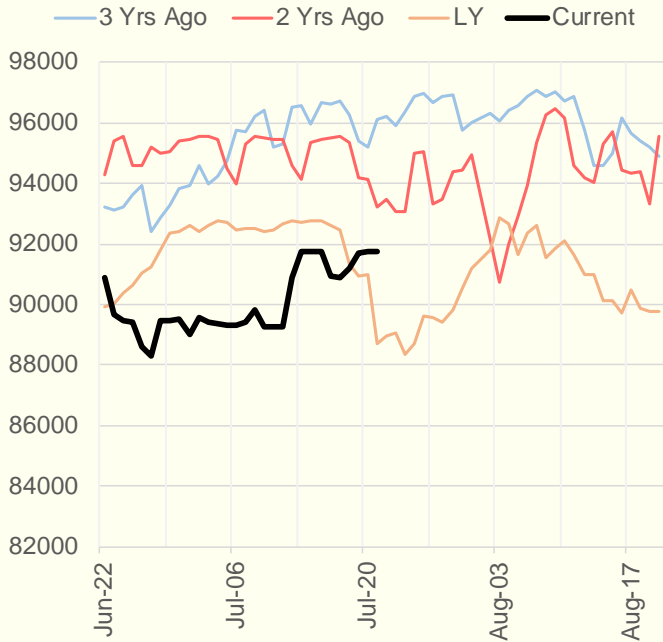
Weather Storage Model - Next 4 Week Forecast

● Summer 18
 ● Summer 19
 ● Summer 20 Apr-Aug
 ● Summer 20 Sept-Oct
 ● Summer 21
 ○ Next 4 Weeks

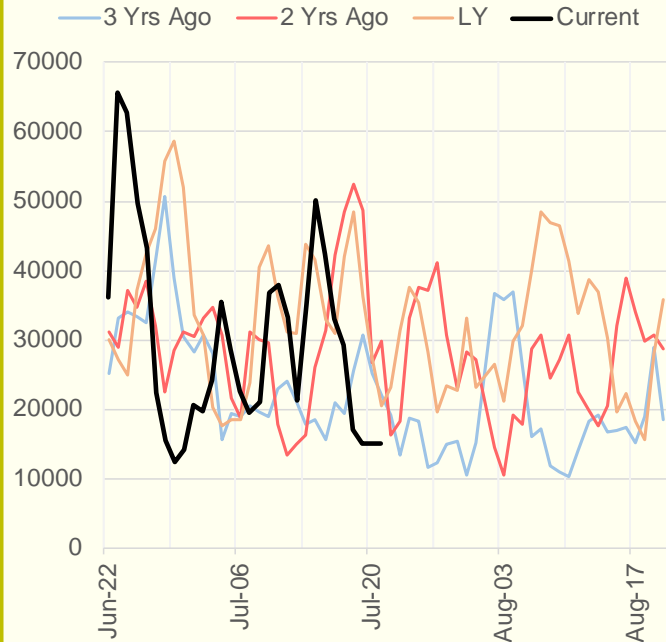


The risk of trading futures and options and other derivatives involves a substantial risk of loss and is not suitable for all persons. Each person must consider whether a particular trade, combination of trades, or strategy is suitable for that person's financial means and objectives. Past results are not necessarily indicative of future results. This communication may contain links to third party websites which are not under the control of and are not maintained by ION Energy Group, and ION Energy Group is not responsible for their content.

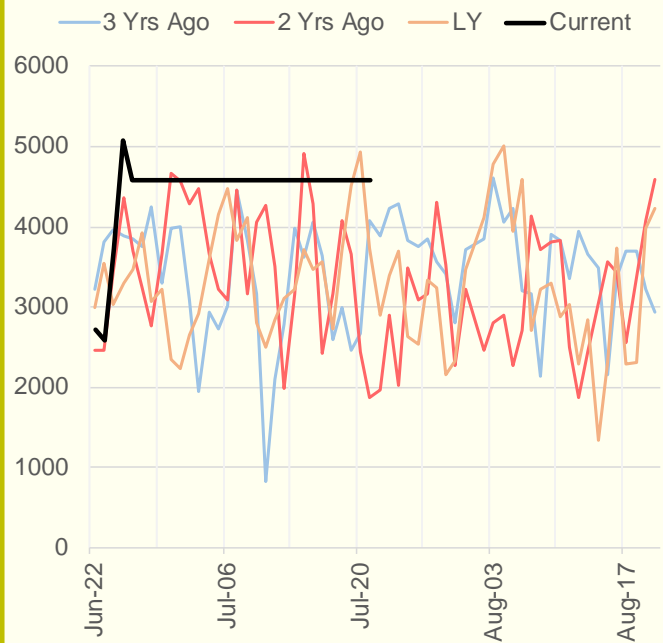
NRC Nuclear Daily Output



Genscape US Wind



CAISO Wind



ERCOT

