



Good morning.

Other than rice, CBOT agriculture commodities are taking a big step back from short term highs as weather models indicate a sliver of improvement for the US WCB and north of the US border. Northern and western Alberta will see rain fall periodically. Northern Saskatchewan and parts of Manitoba will also get some showers. For the US, models suggest a cooler than expected August. Following the hot temperatures over the next week, rain will develop across the WCB and upper Great Plains around the end of this month. There are still issues across other parts of the world. Ukraine will dry down and Europe will see a pickup in rain this weekend, slowing winter crop harvest. China saw another day of torrential rain from central and eastern Henan into Hebei. Some areas saw 40-45 inches over the past six days.

Profit taking is also in focus. USDA export sales were poor, IMO, except for all-wheat. Global export developments were light. South Korea bought 4,000 tons of non-GMO soybeans, as expected, at \$948.72/ton for arrival between Sep 10 and Oct 20. There were no changes in CBOT registrations.

	Corn	Bean	Chi. Wheat	Meal	Oil
FI Est. Managed Money F&O	236	96	17	27	49

Prices as 7/22/21 9:11 AM

CBOT Soybeans			Change	Volume	Soybean Meal			Change	Volume	Soybean Oil			Change	Volume
AUG1	1411.75	(27.50)	7119	AUG1	365.20	(4.60)	7384	AUG1	63.96	(1.50)	6864			
SEP1	1369.50	(28.25)	5848	SEP1	364.30	(5.30)	5522	SEP1	62.53	(1.69)	7320			
NOV1	1361.00	(28.75)	51044	OCT1	363.80	(6.20)	2341	OCT1	61.61	(1.67)	4233			
JAN2	1365.25	(27.75)	4879	DEC1	367.60	(6.40)	14502	DEC1	61.20	(1.58)	30720			
MAR2	1348.75	(27.50)	2097	JAN2	367.70	(6.60)	1943	JAN2	60.54	(1.52)	2206			
MAY2	1343.25	(26.50)	1225	MAR2	365.60	(5.80)	1182	MAR2	59.42	(1.48)	1518			
CBOT Corn			Change	Volume	Oats			Change	Volume	Chicago Wheat			Change	Volume
SEP1	564.50	(7.25)	31097	SEP1	445.25	(9.50)	78	SEP1	695.25	(15.50)	24767			
DEC1	560.25	(8.25)	60907	DEC1	440.75	(9.25)	240	DEC1	704.50	(15.25)	14301			
MAR2	567.75	(7.75)	8845	MAR2	438.00	(9.00)	34	MAR2	710.75	(15.50)	4470			
MAY2	571.75	(7.50)	4937	MAY2	434.50	(12.25)	23	MAY2	710.75	(16.00)	2031			
JUL2	571.50	(7.50)	2677	JUL2	445.25	0.00	0	JUL2	693.75	(14.50)	1784			
SEP2	515.50	(4.25)	215	SEP2	445.25	0.00	0	SEP2	695.50	(14.50)	118			
KC Wheat			Change	Volume	Mat Wheat			Change	Volume	ICE CANOLA			Change	Volume
SEP1	654.50	(14.25)	11856	SEP1	210.25	(3.50)	14495	NOV1	852.10	(27.80)	182			
DEC1	665.25	(14.50)	6943	DEC1	212.75	(3.75)	18973	JAN2	841.90	(25.20)	182			
MAR2	672.00	(15.00)	4112	MAR2	215.00	(3.75)	2691	MAR2	822.20	(29.80)	182			
MAY2	673.00	(15.75)	355	MAY2	216.00	(3.75)	731	MAY2	804.30	(28.40)	182			
Soy/Corn Ratio X/Z 2021 2.4293											Source: FI and Reuters			

Soy/Corn Ratio X/Z 2021 2.4293

Source: FI and Reuters

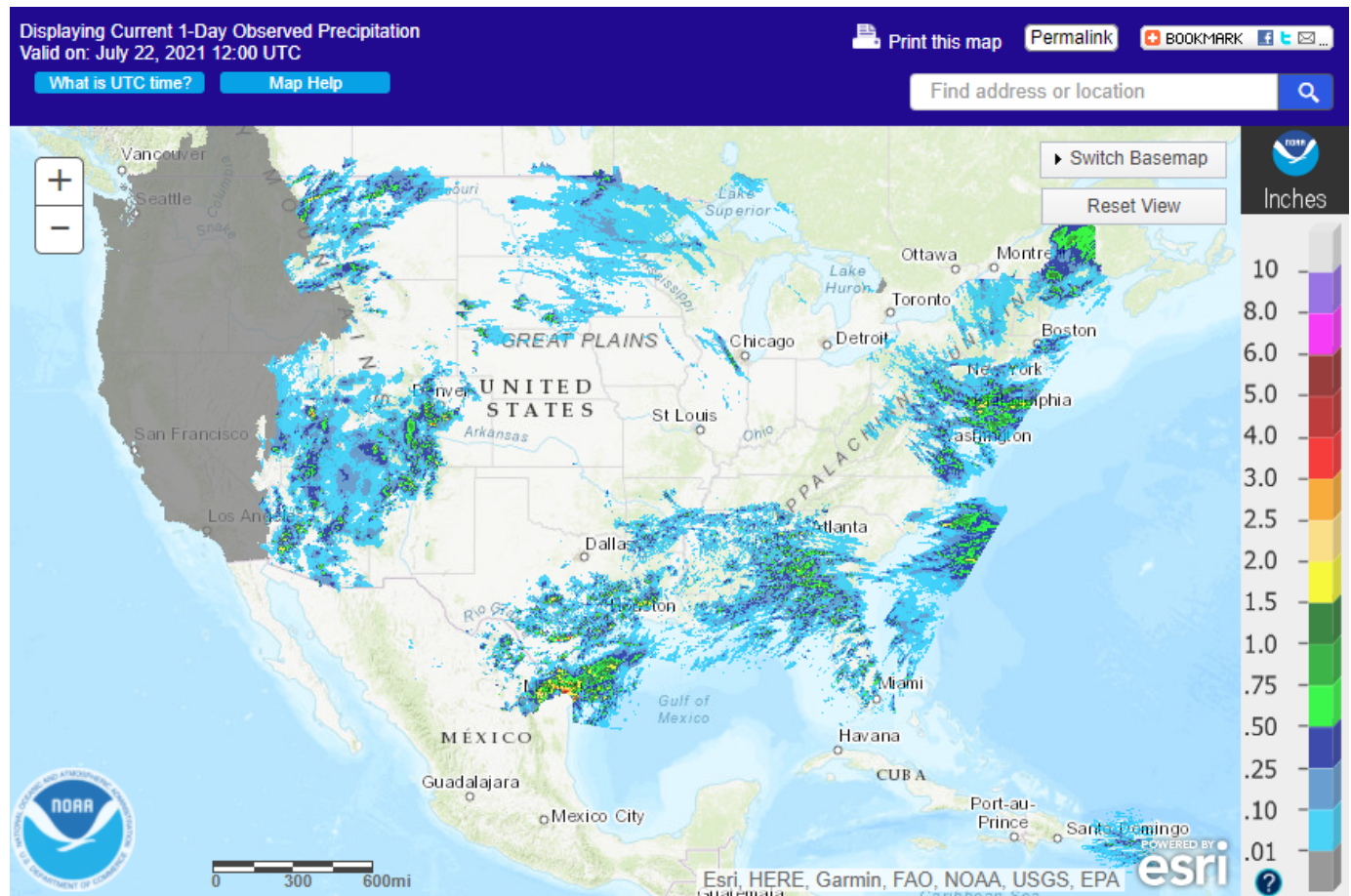
Terry Reilly Grain Research

Futures International | One Lincoln Center | 18 W 140 Butterfield Rd. | Oakbrook

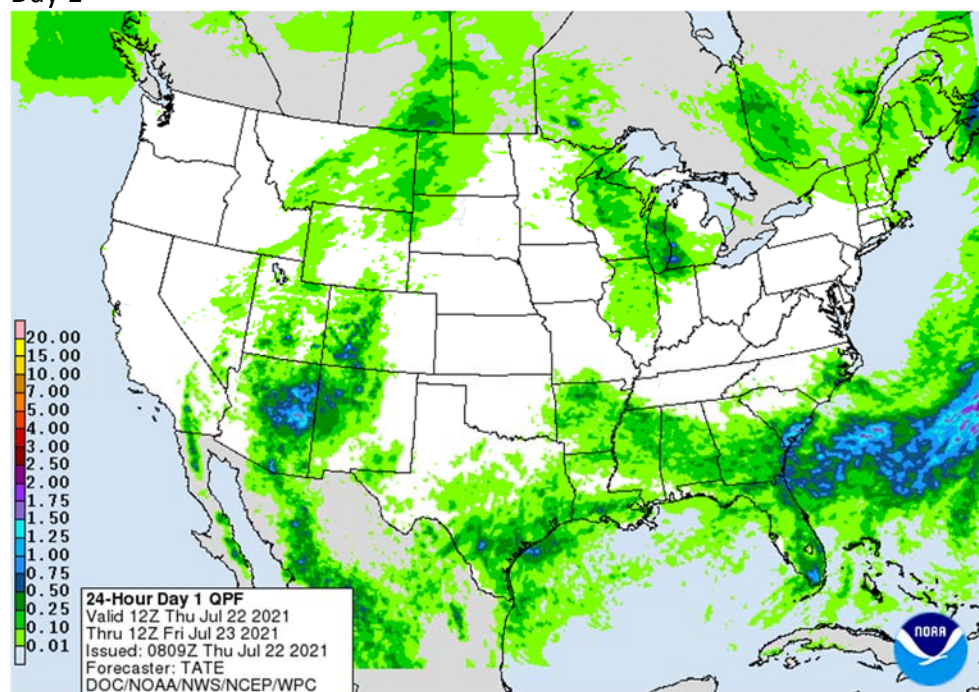
Terrace, IL 60181

W: 312.604.1366 | treilly@futures-int.com

Weather



Day 1

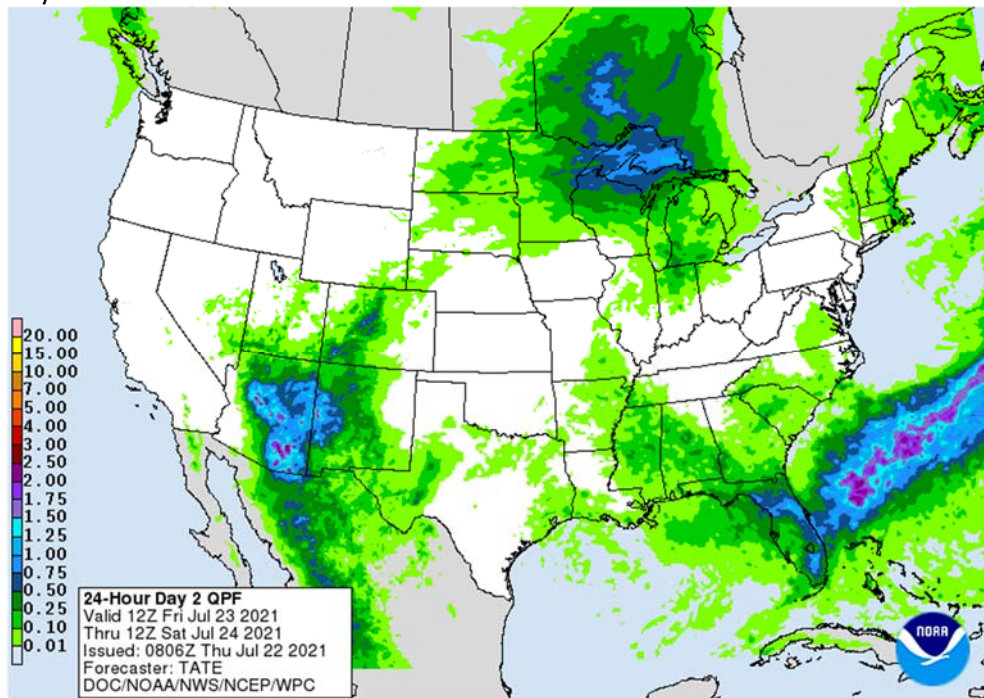


Terry Reilly Grain Research

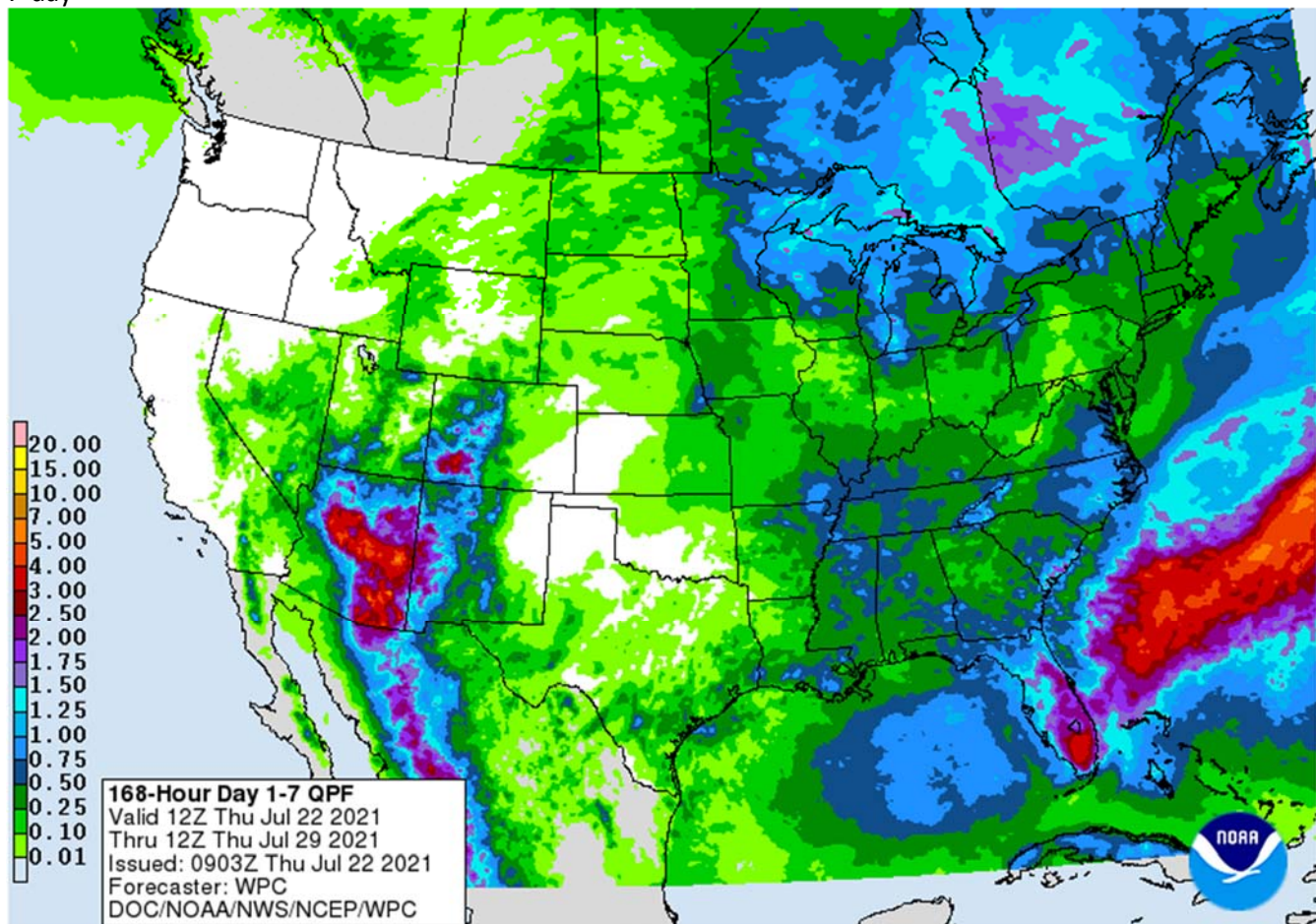
Futures International | One Lincoln Center | 18 W 140 Butterfield Rd. | Oakbrook Terrace, IL 60181

W: 312.604.1366 | treilly@futures-int.com

Day 2



7-day



Terry Reilly Grain Research

Futures International | One Lincoln Center | 18 W 140 Butterfield Rd. | Oakbrook Terrace, IL 60181

W: 312.604.1366 | treilly@futures-int.com

WORLD WEATHER INC.

WORLDWEATHER HIGHLIGHTS FOR JULY 22, 2021

- Torrential rain continued for a second day in Henan, China while spreading northeast into Hebei.
 - Over the past six days rainfall of 16.00 to 22.00 inches and local totals of 40-45 inches has impacted 91,000 square miles of crop land in central China.
 - Crop damage is likely to be extensive.
- no new frost damage occurred in Brazil overnight, but another bout of cooling may occur at the end of next week.
- Ukraine is drying down along with parts of western Russia and rain is expected to be sporadic for a while.
- Another round of frequent rain will begin this weekend in Europe delaying small grain harvesting from eastern France into Poland and returning concern over the quality of unharvested crops.
- India's monsoon should increase over the coming week to ten days with greater rain in the central, east and north.
- Typhoon In-Fa will reach Zhejiang, China this weekend producing 10.00 to 20.00 inches of rain and resulting in a new area of significant damage threatening crops and property
 - Rice will be the key crop at risk of damage
- Australia weather will remain favorably mixed over the next two weeks, although greater rain will soon be needed in Queensland and northern New South Wales
- South Africa winter crops are continuing to establish well in the west, but rain is needed in unirrigated areas of the east
- Argentina winter crops are semi-dormant, but there is need for rain in western production areas
 - This year's wheat is better established than last year
- Canada's Prairies will continue struggling with drought for the next couple of weeks except in northern and western Alberta where rain will fall periodically
 - Northern Saskatchewan and parts of Manitoba will also get some showers, but greater rain is desired
- Very warm to hot temperatures will impact the U.S. Plains for the next week
- Cooling is likely in U.S. crop areas in August with some rain possible as the initial bout of cooling begins early in the month
- West Texas will be drying down and heating up for a while
- U.S. Delta weather is expected to remain a little wet at times over the next ten days
- Rain in the U.S. Plains and western Corn Belt will be restricted in the first week of the two week outlook and then scattered showers and thunderstorms are expected
 - Today's GFS model run is too wet in early August for parts of the western Corn Belt

Source: World Weather Inc.

Bloomberg Ag Calendar

Thursday, July 22:

- USDA weekly crop net-export sales for corn, soybeans, wheat, cotton, pork, beef, 8:30am
- USDA to release world supply-demand outlook for orange and its juice
- Port of Rouen data on French grain exports
- USDA total milk, red meat production
- U.S. cold storage data - pork, beef, poultry
- HOLIDAY: Japan

Friday, July 23:

- ICE Futures Europe weekly commitments of traders report (6:30pm London)
- CFTC commitments of traders weekly report on positions for various U.S. futures and options, 3:30pm
- FranceAgriMer weekly update on crop conditions

Terry Reilly Grain Research

Futures International | One Lincoln Center | 18 W 140 Butterfield Rd. | Oakbrook Terrace, IL 60181

W: 312.604.1366 | treilly@futures-int.com

- U.S. cattle on feed, poultry slaughter, cattle inventory
- HOLIDAY: Japan

Source: Bloomberg and FI

CBOT Registration Changes

	Reg. Change	Now
Soybeans	0	13
Soybean Meal	0	175
Soybean Oil	0	388
Corn	0	0
Oats	0	0
Chi. Wheat	0	0
KC Wheat	0	1,288
Rice	0	1,290
Ethanol	0	0

Source: CBOT, Reuters and FI

*Previous day data as of

7/21/2021

CBOT Open Interest

CBOT Product			Prompt OI	Change	Total Open Interest*	Change
<i>Soybeans</i>	<i>Sv1</i>	<i>Nov 21</i>	373,473	(321)	690,316	(1,743)
<i>Soy Oil</i>	<i>BOv1</i>	<i>Dec 21</i>	183,848	(298)	468,313	(4,721)
<i>Soy Meal</i>	<i>SMv1</i>	<i>Dec 21</i>	151,129	790	371,974	893
<i>Corn</i>	<i>Cv1</i>	<i>Dec 21</i>	631,007	6,694	1,479,385	431
<i>Oats</i>	<i>Oc1</i>	<i>Sep 21</i>	789	7	4,646	59
<i>CHI Wheat</i>	<i>Wv1</i>	<i>Sep 21</i>	156,565	(2,402)	342,643	1,573
<i>KC Wheat</i>	<i>KWv1</i>	<i>Sep 21</i>	103,412	(154)	207,651	4,287
<i>Rice</i>	<i>RRc2</i>	<i>Nov 21</i>	344	22	6,943	45
CME Product					Total Open Interest*	Change
<i>Live Cattle</i>	<i>LCc2</i>	<i>Dec 17</i>	124,500	3,100	304,026	1,514
<i>Lean Hogs</i>	<i>LHc2</i>	<i>Dec 17</i>	100,767	2,028	266,283	2,853
*Previous day preliminary data as of			7/21/2021			

Terry Reilly Grain Research

Futures International | One Lincoln Center | 18 W 140 Butterfield Rd. | Oakbrook Terrace, IL 60181

W: 312.604.1366 | treilly@futures-int.com

Top 15 most active options

Option Strike	TL Globex/Pit Volume	Current Open Interest	Open Interest Change from previous day
<i>BOQ 590C</i>	5,620	9,256	+ 2
<i>SU 1550C</i>	4,559	8,494	+ 2,907
<i>SX 1500C</i>	2,508	30,846	+ 1,374
<i>CZ 520P</i>	2,170	9,613	+ 274
<i>CZ 450P</i>	2,068	20,087	+ 357
<i>CU 570C</i>	1,895	7,742	- 52
<i>WU 750C</i>	1,865	2,190	- 464
<i>CZ 700C</i>	1,781	33,197	- 645
<i>CZ 600C</i>	1,767	38,224	- 250
<i>CZ 500P</i>	1,759	33,752	+ 159
<i>CU 540P</i>	1,694	10,578	+ 498
<i>SX 1400C</i>	1,603	13,899	- 69
<i>CU 580C</i>	1,599	10,071	+ 777
<i>CZ 440P</i>	1,565	12,374	+ 534
<i>SX 1700C</i>	1,520	8,927	+ 78

*Previous day preliminary data as of 7/21/2021

USDA Export Sales

USDA export sales were poor for corn, soybean meal (marketing year low) and soybean oil. Soybeans were on the low side of expectations and wheat was within. The report is viewed negative for the soybean complex and corn. Pork sales were ok at 24,500 tons and included 10k for Mexico. There were 52,200 tons of sorghum sales, for Japan and Mexico.

USDA US Export Sales Results in 000 Metric Tons

		Actual 7/15/2021	Trade Estimates* 7/15/2021	Last Week Last Week		Year Ago 7/16/2020	
Beans	2020-21	62.0	-50 to +200	2020-21	21.7		365.2
	NC	176.3	100-450	NC	290.8		2300.5
Meal	2020-21	68.3	75-300	Sales	70.7	Sales	45.3
	NC	19.1	100-200				
	Shipments	145.8	NA	Shipments	253.4	Shipments	204.7
Oil	2020-21	0.7	-20 to +20	Sales	-0.8	Sales	20.2
	NC	0.0	0				
	Shipments	2.9	NA	Shipments	1.1	Shipments	37.8
Corn	2020-21	(88.4)	-100 to 300	2020-21	138.8		220.6
	NC	47.7	100-400	NC	133.2		2327.2
Wheat	2021-22	473.2	350-600	2021-22	424.7		616.7

Source: FI & USDA *Reuters estimates

n/c= New Crop

US crop-year to date export sales

		Current	Last Year	YOY	YOY	% sold from USDA's export projection			
						2021-22	2020-21	2019-20	2018-19
2020-21	Soybeans mil bu	2278	1705	573	33.6%		100.3%	101.5%	101.6%
2020-21	SoyOil MT	677	1244	-567	-45.6%		127.1%	96.7%	94.2%
2020-21	SoyMeal MT	11590	11410	179	1.6%		89.7%	90.9%	94.0%
2020-21	Corn mil bu	2747	1721	1026	59.6%		96.4%	96.8%	94.8%
2021-22	Wheat mil bu	325	312	13	4.1%	31.9%	32.7%	32.2%	26.5%

Source: Futures International and USDA

Macros

US Initial Jobless Claims Jul 17: 419K (est 350K; prevR 368K; prev 360K)

US Continuing Claims Jul 10: 3236K (est 3100K; prevR 3265K; prev 3241K)

US Existing Home Sales Change Jun: 5.86M (est 5.90M; prev 5.80M)

- Existing Home Sales (M/M) Jun: 1.4% (est 1.7%; prev -0.9%)

- Inventory Of Homes For Sale Jun: 1.25 Mln Units, 2.6 Month's Worth (prev 1.23 Mln Units, 2.5 Months)

- National Median Home Price For Existing Homes Jun: 363.3K, +23.4% (prev \$350,300, +23.6%From May 2020)

Terry Reilly Grain Research

Futures International | One Lincoln Center | 18 W 140 Butterfield Rd. | Oakbrook Terrace, IL 60181

W: 312.604.1366 | treilly@futures-int.com

Prices as 7/22/21 9:12 AM

	Month	Price	Change
USD	Index	92.809	0.055
EUR/USD	Spot	1.1782	(0.001)
USD/BRL	Bid	5.2141	0.027
BITCOIN	BTCc1	\$32,055	\$435
WTI Crude	SEP1	70.54	0.240
Brent	SEP1	72.47	0.240
Nat Gas	AUG1	3.937	(0.022)
DJ Mini	SEP1	34659	(30)
US 10-Yr	SEP1	134 7/32	3/32
Gold	AUG1	1799.5	(3.900)

Source: FI and Reuters

Corn

- Corn is sharply lower on weather models turning slightly wetter for the WCB.
- For the upside, the \$5.88 September corn gap is still not out of reach.
- Weekly ethanol production fell for the second consecutive week to 1.028 million barrels, down 13,000 barrels (PADD2 down 13k), and stocks shot up 1.384 million barrels to 22.518 million, highest since mid-February 2021.
- The USDA Broiler Report showed eggs set in the US up 2 percent and chicks placed down 2 percent. Cumulative placements from the week ending January 9, 2021 through July 17, 2021 for the United States were 5.24 billion. Cumulative placements were up 1 percent from the same period a year earlier.
- Via ICE chat...Argentina: Agriculture adds new tools to monitor sorghum and corn crops. A platform that grows in benefits providing more information for decision making

Export developments.

- Jordan seeks 120,000 tons of feed barley on July 28 for Nov/Dec shipment.

CATTLE ON FEED ESTIMATES (1,000 HEAD, PERCENT OF A YEAR AGO)

Item	Actual	Estimates	Average of Estimates	Range of Estimates
	2020	2021		
June 1 On Feed (Ending Inventory)	11,671	11,699	NA	NA
Placed on Feed during June	1,798	1,724	95.9%	90.4-105.0%
Fed Cattle Marketed during June	1,969	2,010	102.1%	99.4-105.0%
July 1 On Feed (Ending Inventory)	11,438	11,324	99.0%	96.8-102%

Source: Reuters, USDA and FI Placements and Sales estimates in million head are derived using Reuters average %

Soybeans

- Soybean complex is lower on widespread agriculture related selling despite a lower trade in the USD. Soybean meal is seeing limited losses from the 125-160 point decline in soybean oil. Weather is the main feature for the surprise selloff. Fundamental news is light. It seems until we get the August *Crop Production* report, we will see prices influenced by changes in the US weather models. Note private US crop production estimates will start to trickle out next week which could impact prices over the short term.
- There were no changes in CBOT registrations.

Terry Reilly Grain Research

Futures International | One Lincoln Center | 18 W 140 Butterfield Rd. | Oakbrook Terrace, IL 60181

W: 312.604.1366 | treilly@futures-int.com

- Brazil's 2021-22 soybean production was estimated at 144.7 million tons, up 6% from this year, according to Pátria Agronegócios. The soybean area is seen up 6.7% to 40.85 million hectares.
- November Canadian canola was down 27.80 at 852.10/ton as of 8:57 am CT.
- Offshore values are leading SBO 78 points higher and meal \$5.30 lower.
- Rotterdam oils were 15-25 euros lower and meal unchanged to 2 euros higher.
- China cash crush margins were last negative 5 cents on our analysis (+6 yesterday), versus from negative 4 cents late last week.
- Malaysian palm oil:

MALAYSIA PALM OIL

		22-Jul	21-Jul	
Futures MYR/MT	OCT1	4121	4149	-28 \$976
RBD Olien Cash USD/MT	Oct21	\$1,012.50	\$1,015.00	-2.50 -0.2%
US Gulf Crude SBO over RBD Palm	Spot	\$327	\$380	-\$53

- China

China Futures (Set. - Prv. Settle)

		22-Jul	21-Jul	
Soybeans #1 (DCE) CNY/MT	SEP1	5650	5683	-33 -0.6%
Soybean Meal	SEP1	3653	3692	-39 -1.1%
Soybean Oil	SEP1	8904	8976	-72 -0.8%
China Palm Oil	SEP1	8076	8132	-56 -0.7%
China Futures Crush Margin				
USD/BU	SEP1	-2.01	-1.99	-0.02
CNY/MT	SEP1	-1143.15	-1132.18	-10.96
Corn (DCE) CNY/MT	SEP1	2520	2525	-5 -0.2%
Wheat (ZCE) CNY/MT	SEP1	2769	2753	+16 0.6%

Export Developments

- South Korea's Agro-Fisheries & Food Trade Corp. bought 4,000 tons of non-GMO soybeans, as expected, at \$948.72/ton for arrival between Sep 10 and Oct 20.

Wheat

- US wheat is lower following corn and soybeans. The USD turned higher by 9:15 am CT.
- Russia's Southern Region and parts of the dry areas of Kazakhstan will see rain through Friday evening. This is welcome.
- December Paris wheat was up 3.75 at 212.75 euros as of 9:06 am CT.

Export Developments.

- Results awaited: Ethiopia seeks 400,000 tons of wheat on July 19.
- Pakistan's TCP seeks 500,000 tons of wheat on July 27. 200,000 tons are for August shipment, and 300,000 tons are for September shipment.

Rice/Other

- Mauritius seeks 6,000 tons of white rice on July 27 for October through December shipment.

USDA Export Sales

USDA export sales were poor for corn, soybean meal (marketing year low) and soybean oil. Soybeans were on the low side of expectations and wheat was within. The report is viewed negative for the soybean complex and corn. Pork sales were ok at 24,500 tons and included 10k for Mexico. There were 52,200 tons of sorghum sales, for Japan and Mexico.

U.S. EXPORT SALES FOR WEEK ENDING 07/15/2021

COMMODITY	CURRENT MARKETING YEAR						NEXT MARKETING YEAR	
	NET SALES	OUTSTANDING SALES		WEEKLY EXPORTS	ACCUMULATED		NET SALES	OUTSTANDING SALES
		CURRENT YEAR	YEAR AGO		CURRENT YEAR	YEAR AGO		
	THOUSAND METRIC TONS							
WHEAT								
HRW	137.0	1,631.1	1,695.6	119.5	858.9	1,618.0	0.0	0.0
SRW	184.6	967.4	675.6	101.7	332.6	213.6	5.0	5.0
HRS	113.5	1,533.0	1,770.1	165.3	742.3	838.3	0.0	0.0
WHITE	38.0	1,065.1	1,172.2	84.5	408.2	496.2	0.0	0.0
DURUM	0.0	8.4	203.0	0.0	41.7	158.8	0.0	0.0
TOTAL	473.2	5,205.1	5,516.5	471.0	2,383.7	3,324.8	5.0	5.0
BARLEY	0.0	23.5	36.6	0.2	1.6	2.1	0.0	0.0
CORN	-88.5	9,019.4	6,678.2	1,003.5	60,751.2	37,032.1	47.7	16,127.4
SORGHUM	-52.2	710.9	802.2	59.0	6,467.4	3,558.1	0.0	1,594.9
SOYBEANS	62.0	3,132.2	7,865.4	164.1	58,855.8	38,529.1	176.3	9,864.9
SOY MEAL	68.3	2,069.7	1,719.0	145.8	9,519.9	9,691.2	19.1	1,057.3
SOY OIL	0.7	16.9	225.2	2.9	660.3	1,018.9	0.0	0.6
RICE								
L G RGH	40.5	189.8	93.3	35.5	1,611.3	1,329.4	5.0	5.0
M S RGH	0.0	8.0	23.6	0.3	25.9	72.9	0.0	7.0
L G BRN	0.1	11.5	10.1	0.4	40.0	58.8	0.0	0.7
M&S BR	0.1	0.7	31.7	22.3	156.2	86.5	0.0	0.0
L G MLD	29.7	46.8	52.4	18.0	645.5	859.5	0.3	0.3
M S MLD	2.8	113.0	83.9	3.8	579.8	661.3	0.1	12.3

TOTAL	73.2	369.7	294.9	80.3	3,058.6	3,068.5	5.4	25.3
COTTON	THOUSAND RUNNING BALES							
UPLAND	40.0	1,825.3	3,542.8	246.1	14,365.5	13,463.4	251.9	2,972.4
PIMA	3.4	103.3	135.6	10.4	733.8	458.8	0.9	5.4

This summary is based on reports from exporters for the period July 9-15, 2021.

Wheat: Net sales of 473,200 metric tons (MT) for 2021/2022 were up 11 percent from the previous week and 44 percent from the prior 4-week average. Increases primarily for China (135,300 MT, including decreases of 3,300 MT), the Philippines (122,800 MT, including decreases of 1,000 MT), Mexico (118,400 MT, including decreases of 2,800 MT), Nigeria (43,700 MT), and Ecuador (41,800 MT, including 41,300 MT switched from unknown destinations), were offset by reductions primarily for Vietnam (53,000 MT). Total net sales for 2022/2023, of 5,000 MT were for unknown destinations. Exports of 471,000 MT were up 29 percent from the previous week and 28 percent from the prior 4-week average. The destinations were primarily to the Philippines (118,800 MT), Mexico (67,700 MT), China (63,500 MT), Nigeria (48,700 MT), and Ecuador (41,800 MT).

Corn: Net sales reductions of 88,500 MT for 2020/2021 were down noticeably from the previous week and from the prior 4-week average. Increases primarily for Japan (57,300 MT, including 43,700 MT switched from unknown destinations and 12,000 MT - late), Panama (20,700 MT), Colombia (10,800 MT, including decreases of 200 MT), Nicaragua (7,500 MT, switched from Honduras), and Canada (6,700 MT), were more than offset by reductions primarily for China (160,000 MT). For 2021/2022, net sales of 47,700 MT were primarily for Japan (18,000 MT), Honduras (9,100 MT), Mexico (9,000 MT), Nicaragua (7,500 MT), and El Salvador (1,300 MT). Exports of 1,003,500 MT were down 6 percent from the previous week and 22 percent from the prior 4-week average. The destinations were primarily to China (526,000 MT), Mexico (235,900 MT), Japan (95,400 MT, including 12,000 MT - late), Venezuela (47,100 MT), and Nicaragua (27,400 MT).

Optional Origin Sales: For 2020/2021, the current outstanding balance of 30,500 MT is for unknown destinations. For 2021/2022, the current outstanding balance of 60,000 MT is for unknown destinations.

Late Reporting: For 2020/2021, net sales and exports totaling 12,000 MT of corn were reported late to Japan.

Barley: No net sales were reported for the week. Exports of 200 MT for 2021/2022 were unchanged from the previous week, but down 25 percent from the prior 4-week average. The destination was to Canada.

Sorghum: Net sales reductions of 52,200 MT for 2020/2021 resulting in increases for Mexico (900 MT) and Japan (100 MT), were more than offset by reductions for China (53,200 MT). Exports of 59,000 MT were down 17 percent from the previous week, but up noticeably from the prior 4-week average. The destinations were to China (58,800 MT) and Mexico (200 MT).

Rice: Net sales of 73,200 MT for 2020/2021 were up noticeably from the previous week and from the prior 4-week average. Increases primarily for Haiti (27,500 MT), Venezuela (25,100 MT), Mexico (16,100 MT), Canada (2,000 MT), and Jordan (1,400 MT), were offset by reductions for Guatemala (1,000 MT). For 2021/2022, net sales of 5,400 MT were primarily for Guatemala (5,000 MT), Costa Rica (200 MT), and Leeward Windward Islands (100 MT). Exports of 80,300 MT were up 24 percent from the previous week and 53 percent from the prior 4-week average. The

Terry Reilly Grain Research

Futures International | One Lincoln Center | 18 W 140 Butterfield Rd. | Oakbrook Terrace, IL 60181

W: 312.604.1366 | treilly@futures-int.com

destinations were primarily to Venezuela (26,300 MT), South Korea (22,200 MT), Haiti (15,300 MT), Honduras (5,500 MT), and Mexico (4,400 MT).

Exports for Own Account: For 2020/2021, the current exports for own account outstanding balance is 100 MT, all Canada.

Soybeans: Net sales of 62,000 MT for 2020/2021 were up noticeably from the previous week, but down 22 percent from the prior 4-week average. Increases primarily for Japan (85,300 MT, including 53,200 MT switched from unknown destinations and decreases of 4,400 MT), Mexico (13,100 MT, including decreases of 11,300 MT), Colombia (9,100 MT, including 8,500 MT switched from unknown destinations), Malaysia (5,600 MT), and Taiwan (5,000 MT), were offset by reductions primarily for unknown destinations (58,200 MT). For 2021/2022, net sales of 176,300 MT were reported for unknown destinations (97,000 MT), Mexico (67,400 MT), China 6,000 MT), Taiwan (5,000 MT), and Vietnam (900 MT). Exports of 164,100 MT were down 17 percent from the previous week and 19 percent from the prior 4-week average. The destinations were primarily to Mexico (60,300 MT), Japan (57,300 MT), Indonesia (22,000 MT), Colombia (9,100 MT), and Vietnam (4,400 MT).

Exports for Own Account: For 2020/2021, the current exports for own account outstanding balance is 5,800 MT, all Canada.

Soybean Cake and Meal: Net sales of 68,300 MT for 2020/2021--a marketing-year low--were down 3 percent from the previous week and 70 percent from the prior 4-week average. Increases primarily for Ireland (28,500 MT, including 30,000 MT switched from Poland and decreases of 1,500 MT), Colombia (25,000 MT), unknown destinations (12,500 MT), Panama (7,100 MT), and Canada (6,700 MT, including decreases of 900 MT), were offset by reductions primarily for Poland (30,000 MT), the French West Indies (6,500 MT), and Nicaragua (5,500 MT). For 2021/2022, net sales of 19,100 MT were primarily for Canada (15,500 MT), Mexico (2,800 MT), and Guatemala (500 MT). Exports of 145,800 MT were down 43 percent from the previous week and 19 percent from the prior 4-week average. The destinations were primarily to the Philippines (49,400 MT), Ireland (28,500 MT), Canada (21,300 MT), Mexico (17,100 MT), and Honduras (7,500 MT).

Soybean Oil: Net sales of 700 MT for 2020/2021 were down noticeably from the previous week and down 16 percent from the prior 4-week average. Increases were reported for Mexico (400 MT) and Canada (300 MT). Exports of 2,900 MT were up noticeably from the previous week, but down 13 percent from the prior 4-week average. The destinations were to Mexico (2,400 MT) and Canada (500 MT).

Cotton: Net sales of 40,000 RB for 2020/2021 were up 16 percent from the previous week, but down 22 percent from the prior 4-week average. Increases primarily for Turkey (15,700 RB, including 500 RB switched from Vietnam and decreases of 600 RB), China (13,200 RB, including 4,100 RB switched from Hong Kong), Pakistan (4,600 RB, including 600 RB switched from Vietnam and 5,100 RB - late), Indonesia (3,700 RB, including 1,100 RB switched from Thailand, 1,000 RB from Vietnam, 900 RB from Pakistan, 700 RB from Japan, and decreases of 1,300 RB), and Vietnam (2,600 RB), were offset by reductions primarily for Hong Kong (4,100 RB) and Mexico (1,000 RB). For 2021/2022, net sales of 251,900 RB primarily for Turkey (100,500 RB), Pakistan (73,500 RB), Vietnam (36,300 RB), Mexico (24,500 RB), and China (13,900 RB), were offset by reductions primarily for the Philippines (2,600 RB) and Japan (2,100 RB). Exports of 246,100 RB were up 32 percent from the previous week and 2 percent from the prior 4-week average. Exports were primarily to Vietnam (55,700 RB), Turkey (42,300 RB), Mexico (29,700 RB), Pakistan (24,300 RB, including 5,100 RB - late), and China (22,200 RB). Net sales of Pima totaling 3,400 RB were down 42 percent from the previous week and 39 percent from the prior 4-week average. Increases were reported for China (1,300 RB), Italy (1,100 RB), and India (1,000 RB, including decreases of 100 RB). For 2021/2022, net sales of 900 RB were reported for Taiwan (400 RB), Bangladesh (400 RB), and Japan (100 RB). Exports of 10,400 RB were up noticeably from the

previous week, but down 13 percent from the prior 4-week average. The destinations were primarily to India (4,500 RB), China (2,700 RB), Egypt (900 RB), Thailand (900 RB), and Honduras (900 RB).

Exports for Own Account: For 2020/2021, the current exports for own account outstanding balance of 5,700 RB is for China (4,700 RB) and Vietnam (1,000 RB).

Late Reporting: For 2020/2021, net sales and exports totaling 5,100 RB of upland cotton were reported late for Pakistan.

Hides and Skins: Net sales of 355,800 pieces for 2021 were up 6 percent from the previous week, but down 32 percent from the prior 4-week average. Increases were primarily for China (192,300 whole cattle hides, including decreases of 6,600 pieces), South Korea (71,200 whole cattle hides, including decreases of 1,100 pieces), Mexico (41,000 whole cattle hides, including decreases of 1,400 pieces), Taiwan (26,500 whole cattle hides), and Brazil (14,900 whole cattle hides). Exports of 525,500 pieces were up 85 percent from the previous week and 54 percent from the prior 4-week average. Whole cattle hides exports were primarily to China (364,000 pieces), South Korea (83,000 pieces), Mexico (36,800 pieces), Thailand (27,600 pieces), and Brazil (8,100 pieces).

Net sales of 278,300 wet blues for 2021 were up 7 percent from the previous week and 58 percent from the prior 4-week average. Increases were primarily for China (73,400 unsplit, 14,700 grain splits, and decreases of 100 unsplit), Vietnam (80,400 unsplit, including decreases of 200 unsplit), Italy (52,400 unsplit, 100 grain splits, and decreases of 100 unsplit), Thailand (24,400 unsplit, including decreases of 400 unsplit), and Taiwan (23,600 unsplit). For 2022, net sales of 29,200 unsplit were reported for Italy (21,600 unsplit), Vietnam (4,000 unsplit), and China (3,600 unsplit). Exports of 185,600 wet blues were up 50 percent from the previous week and 41 percent from the prior 4-week average. The destinations were to China (40,800 unsplit and 18,000 grain splits), Italy (37,500 unsplit and 3,200 grain splits), Vietnam (28,700 unsplit), Taiwan (15,000 unsplit), and Thailand (14,400 unsplit). Net sales of 157,500 splits resulting in increases for China (159,400 pounds), were offset by reductions for Vietnam (1,800 pounds). Exports of 204,000 pounds were to Vietnam (160,000 pounds) and China (44,000 pounds).

Beef: Net sales of 25,100 MT reported for 2021 were up noticeably from the previous week and up 63 percent from the prior 4-week average. Increases primarily for South Korea (8,600 MT, including decreases of 500 MT), Japan (5,200 MT, including decreases of 600 MT), China (4,100 MT, including decreases of 100 MT), Canada (2,400 MT, including decreases of 100 MT), and Mexico (1,500 MT, including decreases of 100 MT), were offset by reductions for Belgium (100 MT). Total net sales for 2022, of 300 MT were for Japan. Exports of 21,400 MT--a marketing-year high--were up 38 percent from the previous week and 22 percent from the prior 4-week average. The destinations were primarily to South Korea (5,900 MT), Japan (5,500 MT), China (4,000 MT), Taiwan (1,500 MT), and Mexico (1,400 MT).

Pork: Net sales of 24,500 MT reported for 2021 were up noticeably from the previous week, but down 12 percent from the prior 4-week average. Increases primarily for Mexico (10,000 MT, including decreases of 900 MT), Japan (5,200 MT, including decreases of 200 MT), Canada (4,000 MT, including decreases of 500 MT), Colombia (1,900 MT, including decreases of 100 MT), and Chile (900 MT, including decreases of 100 MT), were offset by reductions for China (100 MT) and Peru (100 MT). Exports of 30,800 MT were up 22 percent from the previous week and 1 percent from the prior 4-week average. The destinations were primarily to Mexico (12,000 MT), China (5,400 MT), Japan (4,400 MT), South Korea (1,900 MT), and Canada (1,700 MT).

USDA US Export Sales Results in 000 Metric Tons

		Actual 7/15/2021	Trade Estimates* 7/15/2021		Last Week Last Week		Year Ago 7/16/2020
Beans	2020-21	62.0	-50 to +200	2020-21	21.7		365.2
	NC	176.3	100-450	NC	290.8		2300.5
Meal	2020-21	68.3	75-300	Sales	70.7	Sales	45.3
	NC	19.1	100-200				
	Shipments	145.8	NA	Shipments	253.4	Shipments	204.7
Oil	2020-21	0.7	-20 to +20	Sales	-0.8	Sales	20.2
	NC	0.0	0				
	Shipments	2.9	NA	Shipments	1.1	Shipments	37.8
Corn	2020-21	(88.4)	-100 to 300	2020-21	138.8		220.6
	NC	47.7	100-400	NC	133.2		2327.2
Wheat	2021-22	473.2	350-600	2021-22	424.7		616.7

Source: FI & USDA *Reuters estimates

n/c= New Crop

USDA Export Sales Estimates/Results in 000 tons

	ESTIMATED 7/15/2021			ACTUAL This Week			7/8/2021 Last Week			7/16/2020 Year Ago		
Beans	20/21	25-100		20/21	62.0		20/21	21.7		19/20	365.2	
	21/22	200-400		21/22	176.3		21/22	290.8		n/c	2,300.5	
				Sales to China (0.6)			Sales to China 0.0			Sales to China 209.9		
Meal	Shipped					Shipped	Shipped			Shipped		
	20/21	75-175	150-250	20/21	68.3		20/21	70.7	253.4	19/20	45.3	204.7
	21/22	100-200		21/22	19.1		21/22	126.4		n/c	54.2	
Oil	Shipped					Shipped	Shipped			Shipped		
	20/21	0-5	0-10	20/21	0.7		20/21	(0.8)	1.1	19/20	20.2	37.8
	21/22	0.0		21/22	0.0		21/22	0.0		n/c	0.0	
			Sales to China 0.0			Sales to China 0.0			Sales to China 0.0			
Corn	20/21	100-250		20/21	(88.4)		20/21	138.8		19/20	220.6	
	21/22	150-350		21/22	47.7		21/22	133.2		n/c	2,327.2	
				Sales to China (160.0)			Sales to China (68.4)			Sales to China 7.1		
Wheat	21/22	350-550		21/22	473.2		21/22	424.7		20/21	616.7	

o/c=Old Crop, n/c= New Crop Source: Futures International and USDA

US crop-year to date export sales						% sold from USDA's export projection			
		Current	Last Year	YOY	YOY	2021-22	2020-21	2019-20	2018-19
2020-21	Soybeans mil bu	2278	1705	573	33.6%		100.3%	101.5%	101.6%
2020-21	SoyOil MT	677	1244	-567	-45.6%		127.1%	96.7%	94.2%
2020-21	SoyMeal MT	11590	11410	179	1.6%		89.7%	90.9%	94.0%
2020-21	Corn mil bu	2747	1721	1026	59.6%		96.4%	96.8%	94.8%
2021-22	Wheat mil bu	325	312	13	4.1%	31.9%	32.7%	32.2%	26.5%

Source: Futures International and USDA

EXPORT SALES SITUATION

SOYBEANS

(million bushels)

	2020-21	2019-20	2018-19	2017-18	2016-17	2015-16	2014-15	2013-14	2012-13	2011-12	2010-11	2009-10	2008-09	2007-08	2006-07	2005-06	2004-05	2003-04	2002-03	2001-02
Weekly Sales Total																				
New Crop Sales	943.7	267.7	542.3	562.9	762.3	452.1	800.8	789.1	738.3	522.9	623.8	583.1	309.4	284.6	237.7	145.7	219.3	296.3	213.2	206.2
Weeks remaining																				
7																				
3-Sep	116.2	43.1	25.5	59.2	65.3	62.3	36.2	17.6	23.1	16.3	31.2	30.5	16.9	12.7	27.2	0.5	2.7	1.5	4.0	2.5
10-Sep	90.3	63.5	33.7	85.9	37.4	33.5	53.9	33.9	23.8	14.9	24.6	18.0	15.1	18.9	28.0	21.9	23.3	21.7	23.1	20.9
17-Sep	117.4	38.1	32.0	109.6	32.2	48.4	94.3	103.5	29.4	38.0	39.8	42.3	22.5	27.4	31.8	27.6	36.9	27.7	25.9	15.3
24-Sep	95.2	76.3	55.9	37.3	62.2	92.1	31.9	31.6	47.6	25.8	63.8	50.9	17.3	24.5	43.9	24.8	27.8	25.8	9.8	35.4
1-Oct	95.2	76.9	16.2	64.2	80.1	47.2	33.9	34.2	18.4	24.7	34.8	16.6	22.1	20.2	39.9	19.9	35.3	17.4	19.0	40.0
8-Oct	96.7	58.8	10.8	46.9	52.1	54.3	34.4	0.0	19.2	21.9	39.6	24.0	37.8	27.6	31.9	25.2	36.0	42.2	20.6	48.5
15-Oct	81.8	17.5	7.8	78.2	71.0	74.6	79.6	0.0	19.2	8.4	74.1	36.3	28.8	17.0	23.0	32.7	36.3	36.3	44.4	39.1
22-Oct	59.5	34.7	14.5	72.3	72.4	76.7	48.7	174.2	27.2	7.7	74.4	25.4	53.5	27.2	23.5	30.9	34.0	59.7	60.0	32.5
29-Oct	56.2	66.4	14.3	42.6	92.4	24.1	59.2	36.6	6.8	22.2	58.3	19.2	32.9	22.6	28.2	28.0	17.6	68.8	29.1	55.2
5-Nov	54.0	46.0	17.3	40.6	34.5	47.7	39.5	28.6	20.6	27.4	29.7	46.8	17.6	47.6	28.2	21.3	24.2	33.7	29.3	27.3
12-Nov	51.0	55.7	25.0	31.9	51.7	66.0	17.7	47.8	16.2	33.9	37.0	49.6	29.1	66.4	29.5	22.0	35.3	26.0	43.0	51.6
19-Nov	28.2	61.1	23.1	34.6	69.8	43.1	54.6	51.7	11.7	18.0	24.8	41.7	28.7	41.1	26.8	7.7	49.1	31.7	36.0	36.8
26-Nov	15.0	25.1	32.7	74.1	48.8	32.3	43.3	29.6	42.0	28.3	49.3	26.6	13.2	29.5	24.5	12.2	15.0	9.1	25.5	31.4
3-Dec	20.9	38.6	29.1	53.4	51.1	53.4	29.8	40.7	48.5	17.2	23.4	34.1	29.8	35.7	33.2	35.0	16.4	13.2	48.8	29.6
10-Dec	33.9	52.6	104.2	64.0	73.8	32.6	25.6	12.4	22.8	24.0	3.1	34.3	32.8	32.1	27.3	15.2	31.4	7.5	38.4	36.4
17-Dec	13.0	27.1	87.9	35.8	66.6	76.0	23.4	26.5	-0.3	24.3	28.1	43.9	21.5	25.1	38.1	30.5	42.5	53.5	41.3	20.9
24-Dec	25.6	12.1	38.6	20.4	35.8	17.6	22.4	33.5	16.0	10.3	24.3	29.4	18.8	5.2	12.5	32.7	32.0	20.0	9.3	12.7
31-Dec	1.4	13.1	-22.5	22.3	3.2	23.5	33.5	5.7	11.8	15.9	18.0	26.7	19.5	4.4	21.7	17.0	23.9	5.7	14.0	19.1
7-Jan	33.4	26.1	NA	45.6	12.8	41.4	41.6	25.5	56.7	36.4	15.4	27.7	50.0	35.5	40.3	16.5	39.2	17.1	50.3	41.6
14-Jan	66.8	29.0	NA	19.8	36.0	36.2	0.5	23.4	11.3	17.1	26.9	34.2	48.7	24.4	22.6	47.0	31.6	0.5	21.0	27.7
21-Jan	17.1	17.3	NA	10.4	19.8	23.8	32.6	13.3	14.2	9.0	28.7	24.7	19.3	17.9	24.9	19.2	19.1	-4.8	25.3	26.5
28-Jan	30.3	25.9	NA	24.5	20.1	-1.6	18.0	16.0	29.9	22.2	37.9	14.0	12.4	38.1	29.5	16.4	20.2	13.5	20.2	11.2
4-Feb	29.6	23.7	NA	20.7	16.9	24.5	27.4	6.4	-4.0	13.5	0.8	11.5	39.3	12.1	14.0	19.0	20.2	5.9	16.1	4.3
11-Feb	16.8	18.2	240.0	-6.8	32.7	20.8	18.6	0.4	-4.4	39.8	18.9	7.5	40.2	23.2	24.8	19.5	13.9	7.3	14.6	14.5
18-Feb	6.2	12.5	80.7	28.7	12.4	12.1	16.9	12.0	22.5	20.2	4.9	8.8	12.5	21.4	15.3	18.5	15.7	-0.2	11.1	12.9
25-Feb	12.3	12.7	11.4	89.4	15.7	16.2	18.4	28.4	9.6	37.3	13.3	6.7	5.7	7.4	20.8	13.5	23.4	-1.0	12.3	24.9
4-Mar	12.9	11.1	70.2	43.8	15.4	17.5	6.2	2.4	23.0	22.4	15.1	-4.3	30.8	9.5	16.6	18.5	25.1	9.7	23.5	-11.9
11-Mar	7.4	23.2	14.7	25.1	17.3	22.9	12.6	7.4	4.0	13.1	5.4	7.9	5.3	16.1	19.2	14.0	23.0	1.6	12.4	8.1
18-Mar	3.7	33.2	6.7	8.9	21.9	15.1	18.6	0.4	2.4	17.3	9.7	10.0	15.8	13.6	9.9	8.6	12.3	7.9	12.0	9.1
25-Mar	3.9	35.2	72.4	38.8	25.0	10.0	1.0	2.4	14.4	15.0	5.3	6.6	22.0	6.8	9.5	8.1	11.0	6.4	7.6	2.7
1-Apr	-3.4	19.2	9.9	52.7	15.3	15.4	-6.5	2.9	11.7	16.9	2.8	7.6	15.9	21.5	5.0	13.0	12.3	3.8	22.3	14.8
8-Apr	3.3	9.0	14.0	35.4	14.8	16.8	11.5	0.7	11.3	11.5	4.8	5.8	29.7	17.5	10.4	12.6	4.4	6.6	9.6	11.5
15-Apr	2.4	12.7	21.9	10.8	5.0	15.0	3.8	0.0	-7.6	34.0	12.8	11.3	22.7	13.8	15.5	7.1	5.8	4.6	6.3	8.0
22-Apr	10.7	39.6	11.5	12.5	26.9	8.3	15.9	-0.6	-4.0	22.0	5.3	3.7	30.7	11.4	-2.6	4.1	9.1	1.8	7.9	13.1
29-Apr	6.1	24.0	-5.5	10.2	11.7	30.0	12.5	1.5	7.1	17.1	0.8	10.4	24.0	1.5	7.5	6.7	12.0	4.7	1.4	9.5
6-May	3.5	24.1	13.6	10.4	11.9	7.8	5.0	2.7	0.6	22.6	2.2	9.7	14.8	7.4	8.2	14.3	6.1	-1.2	5.2	12.9
13-May	3.1	44.3	19.7	-5.1	13.1	20.4	6.1	6.0	6.7	29.4	6.1	17.6	25.7	14.1	3.1	12.2	13.9	0.7	4.0	12.2
20-May	2.1	23.7	16.7	10.0	17.4	16.8	11.8	2.2	-4.0	8.8	6.0	6.4	8.7	9.0	12.7	8.6	9.7	-0.5	9.6	12.7
27-May	0.7	18.2	18.7	6.1	22.4	11.4	4.8	1.5	1.8	8.1	3.0	5.0	-0.9	11.0	7.4	12.7	7.2	0.8	4.1	9.7
3-Jun	0.6	36.9	9.4	19.1	5.8	27.9	6.0	3.2	1.2	15.6	4.4	15.5	-2.2	10.0	8.1	6.6	3.2	0.2	14.1	17.5
10-Jun	2.4	19.8	21.0	11.1	12.5	30.0	4.9	3.6	1.9	5.2	6.6	-5.0	5.4	6.3	13.2	14.1	6.7	3.6	-1.7	8.8
17-Jun	2.3	22.1	6.2	13.2	4.1	24.3	4.4	11.7	0.5	14.8	-1.2	11.3	1.0	-9.9	8.8	7.4	5.4	3.5	8.5	10.1
24-Jun	3.4	8.9	31.9	20.6	11.5	26.8	-0.4	1.5	4.4	11.0	-12.3	9.7	7.1	17.1	7.1	13.2	6.3	0.6	7.2	9.6
1-Jul	2.3	35.0	4.9	5.8	13.4	23.4	1.5	2.1	-2.6	12.2	11.2	9.6	10.5	2.4	5.3	7.9	6.0	0.1	8.5	3.2
8-Jul	0.8	11.5	4.7	9.3	8.4	13.4	1.7	1.4	4.1	5.0	0.2	24.5	4.9	2.3	6.7	11.6	4.4	-0.2	8.3	7.7
15-Jul	2.3	13.4	-2.9	19.8	15.0	11.9	3.0	8.3	4.7	7.1	9.4	4.1	11.8	6.7	10.6	8.7	2.4	4.1	6.8	4.0
22-Jul																				
29-Jul																				
5-Aug																				
12-Aug																				
19-Aug																				
26-Aug																				
2-Sep																				
Crop year to date sales	2278	1705	1780	2127	2218	1896	1861	1684	1360	1407	1547	1482	1279	1138	1131	930	1108	895	1083	1098
Average weekly sales																				
rate to reach proj total	-1.1	-3.8	-4.1	1.0	-7.6	6.7	-2.7	-6.7	-6.2	-6.1	-6.7	2.5	0.0	3.1	-2.2	1.4	-1.6	-1.1	-5.7	-5.0
Proj./Actual export total	2270	1679	1752	2134	2166	1942	1842	1638	1317	1365	1501	1499	1279	1159	1116	940	1097	887	1044	1064
YTD sales as % of total	100.3	101.5	101.6	99.7	102.4	97.6	101.0	102.8	103.2	103.1	103.0	98.9	100.0	98.2	101.3	99.0	101.0	100.9	103.7	103.2
Sold as of around Sep 1 %	41.6	15.9	31.0	26.4	35.2	23.3	43.5	48.2	56.1	38.3	41.6	38.9	24.2	24.6	21.3	15.5	20.0	33.4	20.4	19.4

Source: Futures International and USDA

EXPORT SALES SITUATION

SOYMEAL

(000 metric tons)

Weekly Sales Total	2020-21	2019-20	2018-19	2017-18	2016-17	2015-16	2014-15	2013-14	2012-13	2011-12	2010-11	2009-10	2008-09	2007-08	2006-07	2005-06	2004-05	2003-04	2002-03	2001-02
New Crop Sales	3,195.4	3,043.4	3,586.7	3,206.0	2,943.3	3,686.7	5,318.9	2,679.3	3,203.3	1,431.4	2,079.9	3,014.9	1,673.6	1,648.7	1,117.6	1,051.0	1,586.8	1,677.7	1,398.4	1,612.1
Weeks remaining	1-Oct	271.8	364.7	348.2	106.0	398.0	225.8	707.6	1,189.2	143.5	558.6	423.1	466.1	29.2	266.0	611.2	59.9	177.6	456.0	269.1
10	8-Oct	152.2	152.9	104.1	296.0	146.2	264.4	195.9	0.0	173.1	348.9	245.7	115.7	242.3	100.4	151.4	119.8	230.5	291.2	112.8
	15-Oct	321.9	110.4	203.0	142.8	301.0	218.7	23.0	0.0	73.2	74.1	153.9	176.2	263.5	244.4	101.0	194.2	182.9	96.0	103.1
	22-Oct	199.3	179.1	317.4	225.0	149.9	246.2	147.8	805.2	194.5	120.8	165.6	116.7	130.2	203.9	57.7	304.7	24.4	65.4	218.5
	29-Oct	331.4	262.4	255.1	212.9	437.4	208.2	-123.7	287.8	234.6	291.4	365.3	224.1	107.4	211.0	265.9	79.8	145.8	589.6	228.7
	5-Nov	145.3	345.3	432.3	163.1	224.5	224.1	21.3	283.2	197.9	201.5	198.0	357.5	124.4	153.2	132.7	204.7	97.2	-131.5	87.7
	12-Nov	182.1	196.4	229.7	379.8	150.4	254.9	265.7	116.0	365.1	150.2	292.7	225.2	92.3	133.1	245.9	143.2	125.2	74.8	222.2
	19-Nov	138.1	93.2	189.5	176.6	222.5	77.5	-22.3	307.9	429.9	135.5	133.8	107.4	59.7	145.2	214.1	76.1	110.6	102.1	210.6
	26-Nov	163.9	181.1	287.3	166.4	200.0	228.7	226.8	120.4	238.2	170.0	193.4	232.3	106.0	163.4	116.5	272.4	82.8	-4.7	130.5
	3-Dec	163.6	238.6	50.5	455.4	139.2	108.6	88.9	82.7	390.8	103.7	171.8	191.4	18.5	96.0	205.5	120.7	167.2	46.3	110.8
	10-Dec	261.2	83.5	300.0	184.1	251.9	252.5	146.8	77.1	124.7	142.0	113.5	254.2	62.2	111.8	115.4	84.1	113.4	129.5	84.7
	17-Dec	223.7	138.0	427.4	288.3	83.3	78.9	206.7	83.3	53.8	51.1	219.3	286.9	145.7	73.3	108.7	81.8	29.7	86.2	145.5
	24-Dec	76.2	94.7	40.7	109.0	119.1	46.5	157.9	123.9	118.2	144.4	24.5	61.8	43.3	49.1	71.8	46.2	113.7	17.6	89.5
	31-Dec	124.1	74.2	124.8	209.3	269.8	64.7	37.3	62.8	236.1	48.0	26.2	356.7	19.7	77.9	101.5	68.9	70.7	-30.0	12.1
	7-Jan	337.4	375.2	NA	281.8	276.8	280.6	72.1	234.7	218.0	181.2	232.2	416.2	74.4	93.8	221.2	158.0	104.8	55.6	192.1
	14-Jan	468.5	641.9	NA	223.1	365.0	200.8	284.5	241.4	141.7	124.2	-30.0	254.1	210.8	162.4	34.4	189.1	47.1	79.1	214.7
	21-Jan	142.2	438.8	NA	474.8	347.7	186.3	296.5	68.3	196.3	74.7	177.9	134.9	201.7	225.8	160.5	196.6	94.4	-4.1	203.3
	28-Jan	301.1	212.7	NA	160.8	71.8	189.4	296.3	283.7	132.4	161.9	182.7	102.7	184.0	365.8	135.3	133.3	44.0	21.8	-50.1
	4-Feb	263.5	234.3	NA	210.0	223.0	111.4	189.4	18.7	236.1	80.1	107.7	242.1	196.7	106.6	170.3	152.9	173.5	-93.7	75.1
	11-Feb	322.2	169.4	1,468.8	131.9	139.5	171.7	316.6	227.5	250.3	216.0	108.3	81.9	142.6	48.6	201.6	77.3	52.8	80.8	76.0
	18-Feb	160.2	157.5	113.6	139.0	301.9	132.1	-6.4	115.9	119.3	40.0	148.1	85.7	145.6	102.8	0.8	89.6	52.4	-127.7	44.6
	25-Feb	187.4	316.7	230.5	200.6	389.5	46.6	130.2	232.8	51.7	111.0	156.7	1.9	117.1	75.6	66.1	78.0	121.7	-3.4	28.9
	4-Mar	261.7	171.8	226.0	173.3	127.0	83.4	101.3	160.0	143.4	156.1	51.4	92.5	147.4	147.8	277.0	93.5	90.4	95.6	93.9
	11-Mar	234.6	129.1	97.5	194.6	65.9	468.7	204.0	242.9	137.2	87.4	210.9	189.5	33.4	175.8	17.5	115.2	149.9	33.0	152.7
	18-Mar	167.9	251.2	84.3	184.1	228.6	211.6	224.3	158.5	92.6	132.9	79.7	68.1	140.8	156.8	105.2	179.0	195.5	42.8	127.3
	25-Mar	139.7	125.2	190.3	414.3	158.7	23.3	214.1	307.8	227.1	174.0	46.2	211.9	106.9	90.0	121.7	37.1	33.5	39.4	87.9
	1-Apr	127.7	193.3	152.1	317.4	135.0	196.8	46.0	179.6	266.0	33.2	171.6	85.0	85.8	129.6	172.5	85.3	77.9	37.6	25.4
	8-Apr	71.5	158.8	295.3	164.9	112.0	131.6	130.4	36.6	193.3	300.7	130.1	94.3	167.2	176.1	103.9	142.6	95.6	13.7	154.3
	15-Apr	124.3	103.0	329.1	223.7	103.6	209.3	107.4	186.3	93.2	221.1	121.1	57.4	108.3	140.4	151.3	18.4	58.5	48.5	21.6
	22-Apr	163.5	163.6	79.2	246.0	137.1	152.7	134.7	140.9	34.4	59.0	78.7	137.8	293.0	59.0	119.1	124.0	110.3	70.2	104.9
	29-Apr	202.0	131.4	150.8	90.9	113.6	115.3	136.8	75.0	82.8	138.4	61.0	68.3	135.4	122.2	68.6	61.8	51.1	22.5	-11.9
	6-May	74.6	101.4	196.1	376.0	125.0	73.0	45.2	84.5	123.6	114.3	10.0	32.5	260.1	115.6	86.9	157.3	66.1	15.6	72.2
	13-May	189.4	198.8	188.0	239.5	123.6	169.5	103.0	186.3	149.2	144.6	137.5	47.4	210.8	151.4	117.7	87.3	78.2	43.6	24.3
	20-May	197.5	127.2	183.9	140.7	84.9	68.6	123.7	83.7	134.2	33.2	34.9	115.4	193.9	110.0	83.6	133.4	54.6	49.6	58.6
	27-May	217.7	558.9	110.8	131.2	166.8	44.3	53.2	65.8	97.7	75.0	60.5	49.7	142.4	264.1	127.3	72.8	84.8	26.4	94.0
	3-Jun	136.3	207.9	112.5	74.6	86.6	84.4	129.7	59.5	26.6	116.8	80.1	84.1	70.2	153.6	68.7	182.7	53.7	50.8	57.9
	10-Jun	177.3	124.0	109.6	115.1	38.0	162.5	96.1	54.7	9.2	258.7	9.5	35.1	93.2	94.4	57.7	84.0	109.7	19.8	64.3
	17-Jun	387.6	70.2	28.7	146.3	45.1	115.5	106.3	66.3	116.3	229.6	108.3	71.6	79.6	34.6	55.6	109.5	175.9	27.3	74.1
	24-Jun	232.8	143.0	16.8	132.8	3.7	77.4	87.1	82.8	33.7	155.9	-43.5	109.5	-23.0	158.1	99.8	90.8	39.0	4.4	53.6
	1-Jul	211.8	124.4	44.9	37.5	41.4	136.1	101.7	48.8	41.6	95.2	14.7	61.0	18.4	62.6	41.1	54.9	79.5	24.7	97.2
	8-Jul	70.7	177.2	65.3	131.0	6.7	150.4	33.0	83.8	184.0	166.1	116.8	100.4	62.6	60.6	101.7	152.0	44.3	3.5	34.6
	15-Jul	68.3	45.3	87.3	166.4	87.1	79.2	65.8	93.9	11.1	150.9	83.5	23.8	157.6	80.3	87.0	145.3	88.8	25.1	54.4
	22-Jul																			
	29-Jul																			
	5-Aug																			
	12-Aug																			
	19-Aug																			
	26-Aug																			
	2-Sep																			
	9-Sep																			
	16-Sep																			
	23-Sep																			
	30-Sep																			
Crop year to date sales		11589.6	11410.1	11458.1	11842.9	10142.1	10259.1	11221.8	10039.9	9719.9	7803.4	7453.3	9241.9	6874.9	7341.8	6671.0	6109.4	5686.4	4168.4	5650.2
Average weekly sales																				
***rate to reach proj total		135.7	115.7	74.3	88.5	36.8	59.4	67.9	44.1	42.5	105.0	79.6	89.5	84.6	105.8	133.5	120.9	98.6	52.9	-19.3
Proj./Actual export total***		12928	12550	12191	12715	10505	10845	11891	10474	10139	8839	8238	10124	7708	8384	7987	7301	6659	4690	5460
YTD sales as % of total		89.7	90.9	94.0	93.1	96.5	94.6	94.4	95.9	95.9	88.3	90.5	91.3	89.2	87.6	83.5	83.7	85.4	88.9	103.5
***Does not include USDA's Forecast on Flour Meal (MT)																				

Source: Futures International and USDA

EXPORT SALES SITUATION

SOYOL

(000 metric tons)

Weekly Sales Total		2020-21	2019-20	2018-19	2017-18	2016-17	2015-16	2014-15	2013-14	2012-13	2011-12	2010-11	2009-10	2008-09	2007-08	2006-07	2005-06	2004-05	2003-04	2002-03	2001-02
	New Crop Sales	175.7	194.1	138.2	74.7	259.5	137.4	95.4	26.6	144.7	38.9	633.7	388.3	67.1	14.3	92.8	79.7	121.3	118.0	149.9	46.8
Weeks remaining	1-Oct	0.7	1.2	11.4	10.9	16.8	79.8	69.8	38.1	57.8	36.6	26.7	195.9	79.8	58.2	6.0	3.8	17.5	42.4	67.5	36.4
	8-Oct	1.4	4.0	26.6	27.4	0.3	53.2	46.4	0.0	24.5	6.1	13.7	24.0	16.1	26.4	6.2	-1.3	8.2	2.4	2.5	36.0
	15-Oct	37.0	3.4	26.3	27.9	24.5	14.8	10.6	0.0	12.0	4.1	5.5	23.3	3.3	24.3	2.1	6.3	12.3	5.9	9.0	11.2
	22-Oct	6.0	30.0	22.2	27.0	21.2	82.1	15.8	14.5	28.5	0.7	-32.6	9.2	5.2	14.8	5.8	4.7	4.1	9.5	9.1	28.4
	29-Oct	6.8	3.8	22.4	15.9	16.3	36.2	13.9	65.9	36.7	21.7	6.0	6.9	1.0	7.2	-0.1	41.2	0.3	-19.2	26.3	36.4
	5-Nov	88.0	30.6	15.1	2.7	14.4	28.9	15.6	7.2	21.0	2.1	60.0	5.8	6.3	29.7	18.0	0.9	13.6	8.1	1.6	-8.2
	12-Nov	45.1	39.1	40.0	4.2	26.1	37.7	19.6	95.8	124.1	2.7	-0.7	12.4	7.9	65.1	0.3	11.6	11.9	13.0	11.6	2.2
	19-Nov	26.3	14.9	9.2	11.6	54.5	12.8	35.6	18.8	121.5	8.9	32.1	19.2	17.1	31.8	31.5	3.4	9.4	6.9	11.3	6.5
	26-Nov	2.5	10.8	21.1	21.0	13.4	5.3	25.1	1.4	19.0	18.5	51.3	19.0	2.7	40.9	48.4	14.5	2.3	-0.8	8.1	22.0
	3-Dec	8.4	30.0	5.9	14.5	40.3	13.8	14.7	2.3	30.5	5.5	128.2	12.3	0.4	42.1	15.6	0.3	11.3	1.7	14.3	10.8
	10-Dec	7.6	28.0	35.7	24.2	15.1	10.2	38.8	27.0	-5.8	14.8	21.1	20.7	1.5	8.5	6.3	0.4	18.2	-3.5	4.0	20.8
	17-Dec	20.9	37.4	13.7	44.2	18.9	39.8	3.9	83.9	17.2	2.3	1.6	46.7	5.4	13.2	61.0	7.5	17.3	18.1	23.1	34.4
	24-Dec	60.7	-1.9	16.0	17.9	30.9	-5.7	24.7	-18.9	31.3	7.3	13.0	1.5	-6.7	5.7	4.5	0.6	6.9	1.7	10.3	16.4
	31-Dec	3.5	2.6	2.2	-1.6	7.3	3.6	30.2	33.6	10.9	1.1	7.5	3.5	3.5	28.2	-1.3	0.3	10.0	3.3	3.5	14.9
	7-Jan	11.1	36.2	NA	27.9	41.5	17.7	29.4	16.9	12.9	18.7	60.1	50.0	17.0	35.7	15.5	1.1	43.0	3.6	-1.2	35.7
	14-Jan	52.3	55.6	NA	11.8	49.5	19.3	17.1	20.2	26.3	2.5	13.1	10.4	7.5	58.8	2.3	4.4	16.7	0.7	72.9	60.4
	21-Jan	19.1	29.4	NA	58.8	12.2	9.1	10.6	6.7	20.1	6.7	5.0	46.0	21.5	97.5	37.3	20.8	-5.1	2.6	35.9	27.5
	28-Jan	10.5	52.9	NA	7.8	35.3	12.8	15.1	26.0	25.5	22.2	38.4	58.8	10.1	40.9	2.9	0.6	6.5	2.5	27.3	38.9
	4-Feb	-0.4	39.1	NA	24.4	9.9	3.8	16.1	53.3	6.6	21.1	14.8	44.8	45.9	24.0	2.3	-3.3	4.4	3.2	16.8	13.1
	11-Feb	4.4	42.0	92.1	42.9	12.7	12.7	10.9	11.7	28.9	25.2	1.0	46.7	46.1	26.9	1.8	4.3	7.2	2.7	23.4	26.6
	18-Feb	4.4	5.6	10.6	16.6	28.7	3.2	14.2	1.6	4.8	4.8	16.0	40.2	8.5	25.7	-8.9	0.2	7.4	-4.1	46.1	26.1
	25-Feb	5.5	43.5	8.1	34.0	8.4	0.9	5.6	16.9	-19.7	15.5	2.1	15.9	13.6	6.8	8.0	22.5	1.5	-2.1	32.8	23.8
	4-Mar	4.9	24.7	14.0	31.6	-35.8	35.1	4.6	7.1	6.0	5.1	14.2	-9.4	24.8	29.1	2.2	17.5	-3.0	4.8	-7.0	12.2
	11-Mar	19.1	18.9	5.6	36.5	15.3	17.5	8.1	2.0	19.6	38.1	-9.8	18.4	-8.0	23.8	10.1	4.0	1.7	2.1	14.7	8.0
	18-Mar	13.2	55.9	11.7	34.6	12.5	24.4	22.4	4.0	12.6	3.5	14.1	13.0	48.6	42.0	-7.8	9.4	6.9	6.3	17.4	21.6
	25-Mar	4.1	67.0	36.7	43.5	22.4	18.2	20.5	6.2	-4.6	-3.5	-1.1	14.0	62.0	55.8	13.8	-0.9	7.5	-2.9	17.3	-1.7
	1-Apr	15.7	25.1	33.8	22.0	18.6	-7.6	11.9	3.4	7.7	2.1	8.8	6.8	6.9	17.1	3.4	0.7	1.8	-3.2	19.5	0.2
	8-Apr	-1.4	21.2	24.2	28.0	33.2	2.1	4.5	5.5	8.2	23.9	0.6	13.5	14.7	7.3	0.9	2.8	7.0	2.9	1.9	0.0
	15-Apr	5.7	21.4	19.6	11.2	-2.0	10.7	4.4	5.7	1.7	0.7	24.0	-1.9	57.8	25.1	16.6	8.5	6.4	1.0	-15.3	3.7
	22-Apr	3.6	29.8	7.3	44.5	10.6	9.6	7.3	0.5	1.1	14.9	3.9	2.0	31.1	8.9	3.5	1.2	3.3	0.3	8.5	3.0
	29-Apr	6.1	18.9	16.4	45.4	29.0	10.0	15.6	7.7	0.9	30.1	2.0	10.3	34.6	11.9	-5.9	1.9	5.2	0.1	9.1	19.4
	6-May	0.8	6.7	10.8	10.2	14.9	16.7	7.3	1.8	-5.3	8.1	2.6	3.2	20.2	10.8	3.5	-1.4	2.0	0.2	8.6	50.0
	13-May	-4.5	62.1	9.1	17.7	10.0	89.5	9.9	41.3	9.6	9.4	0.5	3.5	3.5	46.4	2.6	9.5	-0.5	0.5	9.6	6.8
	20-May	1.7	56.7	35.1	3.0	22.8	32.9	9.2	15.0	2.9	12.7	29.2	12.9	5.3	-0.3	7.6	1.1	2.0	2.5	9.7	33.4
	27-May	1.0	9.4	15.4	10.0	17.6	44.7	32.7	5.1	30.5	13.1	10.1	3.7	3.9	9.1	2.5	0.5	5.6	5.7	2.9	17.5
	3-Jun	3.2	9.5	5.1	-0.2	30.3	14.5	3.4	71.8	13.2	6.8	10.7	12.2	6.8	15.1	21.3	3.0	-0.1	10.1	2.0	9.8
	10-Jun	2.3	6.4	4.4	16.0	13.3	13.8	-0.1	10.3	0.7	20.4	6.0	87.1	21.6	0.9	20.6	19.0	6.1	4.5	7.9	36.7
	17-Jun	2.4	20.5	19.2	30.5	12.6	14.0	9.5	1.9	2.9	8.3	23.6	45.5	6.9	20.3	29.1	-3.2	5.9	0.2	20.7	2.3
	24-Jun	2.3	2.8	19.7	36.6	6.6	62.4	5.3	19.4	1.6	6.8	-11.3	10.8	69.4	6.0	13.6	3.3	2.2	0.2	17.4	-1.4
	1-Jul	-0.4	28.9	8.5	27.5	16.2	18.1	1.4	12.8	-2.3	34.4	1.3	0.9	-60.2	15.6	9.3	0.3	0.0	2.4	5.2	1.5
	8-Jul	-0.8	5.7	12.2	10.9	25.4	48.7	3.6	8.3	10.6	14.3	16.0	13.0	48.1	5.8	3.2	0.5	7.1	-4.5	8.1	5.8
	15-Jul	0.7	20.2	3.6	-4.4	10.9	17.1	18.1	2.9	3.3	7.2	9.6	0.9	17.5	11.2	33.7	0.5	1.0	0.5	-0.7	17.7
	22-Jul																				
	29-Jul																				
	5-Aug																				
	12-Aug																				
	19-Aug																				
	26-Aug																				
	2-Sep																				
	9-Sep																				
	16-Sep																				
	23-Sep																				
	30-Sep																				
Crop year to date sales		677	1244	829	1002	1042	1122	779	782	900	544	1273	1362	797	1089	542	302	414	250	764	814
Average weekly sales																					
rate to reach proj total		-14.6	4.3	5.2	10.8	11.9	-10.6	13.7	7.0	8.2	12.1	19.6	16.4	20.1	23.5	31.4	22.4	18.9	17.7	26.7	33.4
Proj./Actual export total (MT)		533	1287	880	1108	1159	1017	914	851	982	664	1466	1524	995	1320	851	523	601	425	1026	1143
YTD sales as % of total		127.1	96.7	94.2	90.4	89.9	110.3	85.2	91.9	91.7	82.0	86.8	89.4	80.1	82.4	63.7	57.8	69.0	58.9	74.4	71.2

Source: Futures International and USDA

EXPORT SALES SITUATION

CORN

(million bushels)

Weekly Sales Total	2020-21	2019-20	2018-19	2017-18	2016-17	2015-16	2014-15	2013-14	2012-13	2011-12	2010-11	2009-10	2008-09	2007-08	2006-07	2005-06	2004-05	2003-04	2002-03	2001-02
New Crop Sales	667.9	244.8	565.7	353.8	597.1	323.5	458.7	490.2	385.1	535.9	579.0	455.4	455.8	608.3	458.8	309.6	273.1	300.2	244.3	279.1
3-Sep	71.8	19.6	30.5	41.2	43.0	16.2	22.2	13.1	9.8	32.3	26.8	43.4	19.9	40.9	26.4	0.4	9.1	18.1	17.3	22.3
10-Sep	63.4	57.7	54.5	20.7	27.7	21.0	26.0	17.2	2.7	23.5	23.0	38.0	12.8	80.0	40.5	21.6	47.5	36.0	41.0	27.3
17-Sep	84.2	19.4	67.4	12.6	36.3	16.8	32.9	25.2	0.0	31.0	22.1	26.5	21.6	66.8	32.7	29.4	45.5	54.2	29.1	47.0
24-Sep	79.8	22.1	56.3	32.0	22.6	29.5	25.1	30.5	12.9	50.8	36.4	48.1	22.3	45.3	45.6	27.7	35.6	36.1	37.6	49.4
1-Oct	48.3	11.2	39.6	62.7	81.1	20.5	30.9	52.8	0.2	49.6	23.9	20.5	37.7	91.3	50.7	37.5	30.7	37.7	27.3	24.4
8-Oct	25.8	14.5	15.1	49.4	34.4	23.6	75.7	0.0	6.6	69.4	35.7	24.9	36.4	72.9	32.3	36.5	58.1	64.5	25.6	32.0
15-Oct	72.1	19.3	13.8	50.7	40.3	9.8	40.6	0.0	5.6	13.2	7.6	9.2	31.1	60.8	41.2	37.9	51.5	29.4	20.4	35.6
22-Oct	88.3	21.6	15.5	31.9	31.5	27.9	19.3	172.3	6.6	24.5	21.7	14.5	16.3	25.0	40.4	28.3	42.9	58.0	40.5	22.2
29-Oct	102.8	19.2	27.6	93.1	58.0	21.9	18.8	63.0	6.2	9.9	18.2	22.2	18.6	59.3	75.9	48.0	57.2	56.8	42.8	35.4
5-Nov	38.5	22.9	35.1	37.4	48.6	24.4	19.9	47.4	4.1	8.0	22.6	19.2	14.0	53.7	54.9	34.8	32.7	29.5	45.2	31.8
12-Nov	42.9	31.0	34.5	42.6	65.4	30.7	35.8	30.3	30.3	12.3	21.0	13.9	17.1	72.7	41.0	58.8	28.5	36.1	36.8	26.8
19-Nov	65.6	31.8	49.9	23.6	66.5	80.2	37.2	39.6	9.3	11.0	32.4	48.2	18.3	72.5	40.2	40.7	51.2	63.1	45.4	25.6
26-Nov	54.0	21.5	46.4	34.5	30.0	19.7	46.1	11.1	2.0	27.4	29.8	25.9	13.5	41.7	32.0	24.1	23.0	33.4	26.5	59.8
3-Dec	53.6	34.4	35.6	34.1	58.9	43.1	37.9	18.1	10.2	19.9	26.4	33.4	36.6	45.5	55.1	27.3	36.0	40.9	21.5	34.8
10-Dec	75.8	67.3	77.7	61.3	59.7	22.8	27.3	32.5	4.5	28.1	31.9	48.3	24.1	46.0	49.8	36.1	25.1	36.3	28.0	23.7
17-Dec	25.6	24.6	66.9	49.0	49.3	31.6	67.1	55.7	4.1	12.6	35.7	62.7	21.7	56.0	45.4	34.8	28.6	37.5	26.7	35.1
24-Dec	38.0	20.9	19.8	4.0	37.7	27.8	35.2	6.1	1.9	11.8	27.5	30.4	10.6	27.6	22.6	13.5	27.4	29.7	14.6	21.4
31-Dec	29.5	6.4	18.1	17.2	16.9	10.0	15.3	3.6	0.5	12.7	14.5	14.4	10.3	26.4	46.3	18.1	16.9	16.5	11.2	4.5
7-Jan	56.6	30.9	NA	74.3	23.8	26.3	32.2	32.3	15.5	29.9	17.3	12.9	8.5	93.3	56.1	24.8	25.9	33.0	24.3	36.1
14-Jan	56.6	39.6	NA	56.9	53.8	45.6	86.0	27.3	5.5	37.7	35.6	62.4	42.8	62.8	39.1	48.1	35.8	39.3	25.5	49.1
21-Jan	72.8	48.6	NA	72.9	53.9	32.2	42.1	72.4	7.4	35.9	16.3	35.5	43.6	74.3	31.4	84.9	30.0	30.5	13.3	29.2
28-Jan	292.8	49.1	NA	69.7	45.0	44.5	33.3	66.9	6.6	27.3	45.9	36.3	45.8	40.5	36.1	54.2	11.6	38.6	29.3	54.7
4-Feb	57.0	38.1	NA	77.7	38.3	15.9	39.5	50.0	8.9	39.6	43.6	29.3	60.8	36.7	54.6	63.5	39.2	45.4	24.3	41.5
11-Feb	39.3	49.2	238.4	61.2	30.8	41.4	36.7	27.2	14.2	33.1	40.6	38.4	52.5	44.9	33.0	47.1	30.9	37.5	17.6	45.4
18-Feb	17.8	34.0	48.8	69.0	29.3	36.8	28.2	33.1	11.9	27.2	59.1	15.8	17.7	23.7	12.5	58.4	35.8	38.9	27.1	31.7
25-Feb	4.6	30.3	38.2	73.1	27.3	43.2	32.6	59.8	-2.0	17.5	42.5	30.0	31.2	25.5	46.8	23.9	32.0	14.7	55.6	15.7
4-Mar	15.6	57.9	14.6	98.6	29.2	46.2	16.5	25.0	11.1	32.9	18.8	13.3	43.0	30.3	29.5	53.7	28.9	22.6	27.8	41.2
11-Mar	38.8	35.6	33.7	57.9	49.4	48.3	19.8	29.4	3.6	33.9	40.8	29.4	17.3	29.5	25.2	40.5	39.7	51.7	46.0	42.9
18-Mar	176.4	71.4	35.6	53.3	53.0	31.6	17.1	54.4	11.6	5.1	35.2	23.9	46.9	24.9	44.2	35.5	36.5	46.8	27.6	31.0
25-Mar	31.4	42.3	21.2	35.4	28.2	31.1	16.0	37.8	13.9	36.9	75.4	31.8	49.3	27.7	21.6	40.9	44.9	27.3	14.1	37.7
1-Apr	29.8	72.8	21.6	33.1	44.8	37.2	25.2	25.9	7.3	37.8	24.4	53.5	41.8	18.7	52.2	26.0	26.0	51.9	33.9	17.4
8-Apr	12.9	35.7	37.3	43.0	29.1	44.7	23.2	21.2	15.8	11.8	33.4	39.6	34.2	34.2	31.6	32.1	36.0	48.1	27.0	34.9
15-Apr	15.3	28.6	30.7	27.4	29.8	47.4	34.2	24.4	12.4	25.4	24.1	58.3	47.8	30.5	43.5	43.4	26.3	45.2	23.0	36.0
22-Apr	20.5	53.4	23.1	40.2	38.9	85.1	32.8	36.9	13.0	52.4	13.7	48.4	48.2	21.7	24.2	30.8	19.4	36.4	35.4	45.1
29-Apr	5.4	30.5	11.3	27.4	30.4	30.3	33.1	6.3	4.6	8.8	11.2	72.9	23.2	13.3	20.6	50.5	24.5	43.1	23.3	29.1
6-May	-4.5	42.2	21.8	38.8	10.9	43.5	14.6	13.5	8.7	13.4	17.1	32.2	36.9	21.5	59.6	43.5	54.7	19.9	41.1	57.7
13-May	10.9	34.8	17.4	33.6	27.8	58.0	32.0	20.0	4.1	6.1	33.2	53.3	26.9	20.0	25.9	60.6	33.6	28.9	29.8	37.8
20-May	21.9	16.8	35.7	39.1	18.0	54.4	25.8	22.7	3.4	7.4	28.6	40.6	29.8	18.8	26.6	44.7	21.7	49.7	25.0	44.5
27-May	20.9	25.1	-0.3	33.0	16.2	51.9	18.3	21.7	4.2	9.9	18.6	7.8	23.8	20.9	14.8	45.5	29.3	16.2	21.0	16.5
3-Jun	7.5	26.0	6.6	36.9	13.7	61.4	19.5	16.1	3.2	3.6	12.6	40.1	28.1	20.7	20.9	34.1	22.1	2.1	28.7	51.5
10-Jun	0.7	14.1	1.5	6.5	23.6	35.8	24.7	4.3	5.3	6.7	11.6	42.9	30.2	13.5	32.6	57.7	25.0	23.4	29.2	41.1
17-Jun	8.5	18.2	11.6	33.5	20.8	34.3	19.6	10.1	13.3	7.6	16.2	44.2	27.0	9.1	30.0	62.0	20.0	6.3	32.0	36.4
24-Jun	0.6	14.2	6.9	17.4	12.4	18.4	23.4	14.4	9.2	0.8	27.2	25.6	45.5	12.8	42.0	53.3	47.9	31.9	30.3	38.8
1-Jul	6.8	23.6	19.9	15.8	5.5	14.6	21.1	14.3	15.4	6.8	24.5	19.7	29.5	13.3	39.7	31.1	37.1	20.5	28.4	14.1
8-Jul	5.5	38.6	7.9	25.2	6.3	26.3	13.0	22.6	6.0	1.3	18.9	26.7	27.5	14.5	26.4	23.2	12.7	25.9	18.8	28.2
15-Jul	-3.5	8.7	4.8	13.3	18.4	13.6	8.8	11.5	-1.1	-0.4	16.9	24.2	29.8	12.7	16.2	13.3	23.5	14.1	18.5	29.6
22-Jul																				
29-Jul																				
5-Aug																				
12-Aug																				
19-Aug																				
26-Aug																				
2-Sep																				
Crop year to date sales	2746.7	1720.8	1958.3	2316.2	2213.7	1900.4	1841.0	1907.0	735.6	1540.6	1839.8	1988.1	1828.2	2403.0	2168.7	2092.4	1771.9	1903.9	1559.8	1853.0
Average weekly sales																				
rate to reach proj total	15.1	8.2	15.7	17.8	11.7	0.1	3.8	1.9	-0.8	0.3	-0.8	-1.2	3.0	5.0	-6.4	6.1	6.7	-0.6	4.1	7.6
Proj./Actual export total	2850	1777	2066	2438	2294	1901	1867	1920	730	1543	1834	1980	1849	2437	2125	2134	1818	1900	1588	1905
YTD sales as % of total	96.4	96.8	94.8	95.0	96.5	100.0	98.6	99.3	100.8	99.8	100.3	100.4	98.9	98.6	102.1	98.1	97.5	100.2	98.2	97.3
Sold as of around Sep 1 %	23.4	13.8	27.4	14.5	26.0	17.0	24.6	25.5	52.8	34.7	31.6	23.0	24.7	25.0	21.6	14.5	15.0	15.8	15.4	14.7

Source: Futures International and USDA

EXPORT SALES SITUATION

ALL-WHEAT

(million bushels)

Weekly Sales Total		2021-22	2020-21	2019-20	2018-19	2017-18	2016-17	2015-16	2014-15	2013-14	2012-13	2011-12	2010-11	2009-10	2008-09	2007-08	2006-07	2005-06	2004-05	2003-04	2002-03	2001-02
New Crop Sales		190.5	234.3	213.1	152.7	225.5	200.6	160.1	219.3	256.5	185.8	243.2	148.6	115.7	263.9	159.2	134.1	134.1	208.4	125.1	112.6	111.0
4-Jun		12.0	9.9	12.0	11.1	16.9	8.2	13.8	20.9	15.7	15.9	16.7	4.8	12.4	12.3	15.2	16.9	12.1	10.7	10.2	11.0	7.5
11-Jun		10.5	10.9	6.9	17.0	13.7	28.0	11.6	13.7	15.9	30.9	24.3	35.3	9.9	19.8	19.9	11.6	18.8	21.7	21.7	7.6	13.0
18-Jun		13.7	11.9	22.5	20.7	19.9	17.0	16.0	13.2	26.9	11.9	20.0	26.5	13.5	18.3	22.9	19.9	21.6	15.9	19.0	16.4	19.9
25-Jun		8.3	12.9	10.2	16.2	18.1	23.7	13.4	20.9	21.8	15.4	15.6	15.4	8.9	24.5	19.1	11.0	23.1	17.2	24.2	20.5	22.6
2-Jul		10.7	13.9	10.4	5.0	13.8	30.3	12.7	12.4	54.1	11.5	19.1	18.9	21.5	22.7	43.5	7.4	11.3	20.2	20.6	6.2	10.8
9-Jul		15.6	14.9	12.8	11.0	13.1	11.7	10.7	11.6	36.6	21.6	12.7	11.4	15.5	27.5	28.1	12.1	21.6	11.5	24.2	31.2	20.0
16-Jul		17.4	15.9	24.2	14.2	24.6	17.6	18.5	16.3	24.3	13.5	17.4	14.0	12.6	22.4	76.3	17.1	19.2	15.7	13.8	20.6	26.0
23-Jul																						
Crop year to date sales		278.8	324.9	312.1	247.9	345.7	337.2	256.7	328.3	451.8	306.5	369.0	274.7	210.0	411.5	384.1	230.2	261.9	321.4	259.0	226.3	230.8
Average weekly sales																						
rate to reach proj total		11.5	12.8	12.6	13.3	10.8	13.7	10.0	10.3	13.9	13.6	13.1	19.5	12.9	11.6	16.9	13.0	14.3	14.3	17.3	12.0	14.1
Proj./Actual export total		875	992	969	937	906	1051	778	864	1176	1012	1051	1289	879	1015	1263	908	1003	1066	1158	850	962
YTD sales as % of total		31.9	32.7	32.2	26.5	38.2	32.1	33.0	38.0	38.4	30.3	35.1	21.3	23.9	40.5	30.4	25.3	26.1	30.1	22.4	26.6	24.0

Source: Futures International and USDA



Futures International, LLC

An OTC Global Holdings LP Company

CBOT Deliverable Commodities Under Registration

Source: CBOT and FI

Date	CHI Wheat	Change	Oats	Change	Corn	Change	Ethanol	Change	Soybeans	Change	Soy Oil	Change	Soy Meal	Change	Rough Rice	Change	KC Wheat	Change
7/21/2021	0	0	0	0	0	0	0	0	13	0	388	0	175	0	1,290	0	1,288	0
7/20/2021	0	0	0	0	0	0	0	0	13	0	388	0	175	0	1,290	0	1,288	0
7/19/2021	0	0	0	0	0	0	0	0	13	0	388	0	175	(87)	1,290	(87)	1,288	0
7/16/2021	0	(1)	0	0	0	(77)	0	0	13	0	388	0	262	0	1,377	(91)	1,288	0
7/15/2021	1	(15)	0	0	77	0	0	0	13	0	388	0	262	(56)	1,468	(32)	1,288	0
7/14/2021	16	(4)	0	0	77	77	0	0	13	0	388	0	318	(84)	1,500	0	1,288	0
7/13/2021	20	0	0	0	0	0	0	0	13	0	388	0	402	(5)	1,500	0	1,288	0
7/12/2021	20	0	0	0	0	0	0	0	13	0	388	0	407	0	1,500	0	1,288	0
7/9/2021	20	0	0	0	0	0	0	0	13	0	388	0	407	0	1,500	0	1,288	39
7/8/2021	20	0	0	0	0	0	0	0	13	0	388	0	407	0	1,500	34	1,249	0
7/7/2021	20	0	0	(1)	0	0	0	0	13	0	388	0	407	0	1,466	0	1,249	0
7/6/2021	20	0	1	(3)	0	0	0	0	13	0	388	0	407	0	1,466	0	1,249	0
7/2/2021	20	0	4	(5)	0	0	0	0	13	0	388	(227)	407	0	1,466	0	1,249	0
7/1/2021	20	0	9	(7)	0	0	0	0	13	0	615	(53)	407	(17)	1,466	55	1,249	0
6/30/2021	20	0	16	0	0	0	0	0	13	0	668	0	424	0	1,411	6	1,249	0
6/29/2021	20	0	16	0	0	0	0	0	13	0	668	0	424	(18)	1,405	119	1,249	0
6/28/2021	20	0	16	0	0	0	0	0	13	0	668	(50)	442	0	1,286	0	1,249	0
6/25/2021	20	0	16	0	0	0	0	0	13	0	718	0	442	0	1,286	0	1,249	0
6/24/2021	20	0	16	0	0	0	0	0	13	0	718	(50)	442	0	1,286	(192)	1,249	0
6/23/2021	20	0	16	0	0	0	0	0	13	0	768	0	442	0	1,478	0	1,249	0
6/22/2021	20	0	16	0	0	0	0	0	13	0	768	0	442	0	1,478	0	1,249	0
6/21/2021	20	0	16	0	0	0	0	0	13	0	768	0	442	0	1,478	(100)	1,249	0
6/18/2021	20	0	16	0	0	0	0	0	13	0	768	(100)	442	0	1,578	0	1,249	0
6/17/2021	20	0	16	0	0	0	0	0	13	0	868	0	442	0	1,578	0	1,249	0
6/16/2021	20	0	16	0	0	0	0	0	13	0	868	0	442	0	1,578	0	1,249	0
6/15/2021	20	0	16	0	0	0	0	0	13	0	868	0	442	0	1,578	0	1,249	0
6/14/2021	20	0	16	0	0	0	0	0	13	0	868	0	442	0	1,578	0	1,249	0
6/11/2021	20	0	16	0	0	0	0	0	13	0	868	0	442	0	1,578	0	1,249	0
6/10/2021	20	0	16	0	0	0	0	0	13	0	868	0	442	0	1,578	0	1,249	0
6/9/2021	20	0	16	0	0	0	0	0	13	0	868	0	442	0	1,578	0	1,249	0
6/8/2021	20	0	16	0	0	0	0	0	13	0	868	0	442	0	1,578	0	1,249	0
6/7/2021	20	0	16	0	0	0	0	0	13	0	868	0	442	0	1,578	0	1,249	0
6/4/2021	20	0	16	0	0	0	0	0	13	0	868	(100)	442	0	1,578	0	1,249	0
6/3/2021	20	0	16	0	0	0	0	0	13	0	968	0	442	0	1,578	0	1,249	0
6/2/2021	20	0	16	0	0	0	0	0	13	0	968	0	442	0	1,578	0	1,249	0
6/1/2021	20	0	16	0	0	0	0	0	13	0	968	(35)	442	0	1,578	0	1,249	0

Foreign Agriculture Market Guidance

As of 8:22 AM

Day on day change

		22-Jul	21-Jul	Change
Rotterdam Oils				
Soy oil EUR/MT	Aug/Oct	1,233.33	1,251.67	-18.33
Rape oil EUR/MT	Aug/Oct	1,150.00	1,175.00	-25.00
		1125		
Rotterdam Soybean Meal				
Argentina USD/MT (high protien)	Aug/Sep	470.00	469.00	+1.00
Argentina USD/MT	Oct/Dec	469.00	469.00	unchanged
Brazil USD/MT (pellets)	Aug/Sep	469.00	467.00	+2.00
Brazil USD/MT	Oct/Dec	467.00	467.00	unchanged
MALAYSIA PALM OIL				
Futures MYR/MT	OCT1	4121	4149	-28 \$976
RBD Olien Cash USD/MT	Oct21	\$1,012.50	\$1,015.00	-2.50 -0.2%
US Gulf Crude SBO over RBD Palm	Spot	\$322	\$380	-\$58
China Futures (Set. - Prv. Settle)				
Soybeans #1 (DCE) CNY/MT	SEP1	5650	5683	-33 -0.6%
Soybean Meal	SEP1	3653	3692	-39 -1.1%
Soybean Oil	SEP1	8904	8976	-72 -0.8%
China Palm Oil	SEP1	8076	8132	-56 -0.7%
China Futures Crush Margin				
USD/BU	SEP1	-2.01	-1.99	-0.02
CNY/MT	SEP1	-1143.15	-1132.18	-10.96
Corn (DCE) CNY/MT	SEP1	2520	2525	-5 -0.2%
Wheat (ZCE) CNY/MT	SEP1	2769	2753	+16 0.6%
China Cash				
Cash Soybean Crush USD/BU	Spot	-\$0.05	\$0.06	-0.11
Average Cash Wheat USD/BU		\$10.70	\$10.69	+0.01
Average Cash Corn USD/BU		\$10.81	\$10.80	+0.01
Corn North USD/BU	Spot	\$10.26	\$10.25	+0.01
Corn South USD/BU	Spot	\$11.11	\$11.10	+0.01
Reuters Imported Corn South USD/BU	Spot	\$8.83	\$8.83	unchanged
Matif Wheat (Liffe)				
		\$/ton	\$251.56	\$256.81
Matif EUR/MT morning over morning	DEC1		212.75	218.25
Matif wheat from prev. settle day before	DEC1		216.50	218.00
				-5.50
				-1.50
Baltic Dry Index				
	Spot	3058	3053	+5
		21-Jul	20-Jul	
Exchange Rates				
EU	Euro/\$	1.1824	1.1767	+0.0057
MYR	Ringgit/\$	4.2215	4.2300	-0.0085
CNY	RMB/\$	6.4654	6.4724	-0.0070

Currency adjusted to the CME pit close

In cents/bu	22-Jul
oils in points and meal in USD/short ton	
Rot soy oil	+74
Rot rape oil	+36

Rot meal	
	-\$2.79
Rot meal	
	-\$4.25

Malaysian Fut	+105
Malaysian Cash	+115

China soy #1	-10
China meal	-\$8.91
China oil	+93

Dalian corn	-1
Gluten Wheat	-2

ALL OILS
Average lead
78
ALL MEAL
Average lead
-\$5.32

CME electronic close change

SQ21	-4.25	SMQ21	+4.30	BOQ21	-156	CU21	unchanged
SU21	-1.25	SMU21	+4.00	BOU21	-137	CZ21	+2.75
SX21	+1.25	SMV21	+4.20	BOV21	-126	CH22	+2.50
SF22	+2.00	SMZ21	+4.30	BOZ21	-115	WU21	+10.25
SH22	+5.75	SMF22	+4.90	BOF22	-104	WZ21	+11.00
SK22	+6.50	SMH22	+5.80	BOF22	-95	WH22	+11.25
						WK22	+11.00

#1 China SB is only designed for Non-GMO soybeans, but captures 96-98% of total bean open interest. #2 China soybeans are not heavily traded

Source: Reuters, Dow Jones Newswires and Futures International

Disclaimer

TO CLIENTS/PROSPECTS OF FUTURES INTERNATIONAL, SEE RISK DISCLOSURE BELOW:

THIS COMMUNICATION IS CONVEYED AS A SOLICITATION FOR ENTERING INTO A DERIVATIVES TRANSACTION.

Any trading recommendations and market or other information to Customer by Futures International (FI), although based upon information obtained from sources believed by FI to be reliable may not be accurate and may be changed without notice to customer. FI makes no guarantee as to the accuracy or completeness of any of the information or recommendations furnished to Customer. Customer understands that FI, its managers, employees and/or affiliates may have a position in commodity futures, options or other derivatives which may not be consistent with the recommendations furnished by FI to Customer.

The risk of trading futures and options and other derivatives involves a substantial risk of loss and is not suitable for all persons. In purchasing an option, the risk is limited to the premium paid, and all commissions and fees involved with the trade. When an option is shorted or written, the writer of the option has unlimited risk with respect to the option written. The use of options strategies such as a straddles and strangles involve multiple option positions and may substantially increase the amount of commissions and fees paid to execute the strategy. Option prices do not necessarily move in tandem with cash or futures prices. Each person must consider whether a particular trade, combination of trades or strategy is suitable for that person's financial means and objectives.

This material may include discussions of seasonal patterns, however, futures prices have already factored in the seasonal aspects of supply and demand, and seasonal patterns are no indication of future market trends. Finally, past performance is not indicative of future results.

This communication may contain links to third party websites which are not under the control of FI and FI is not responsible for their content. Products and services are offered only in jurisdictions where solicitation and sale are lawful, and in accordance with applicable laws and regulations in each such jurisdiction.