

CFTC COMMITMENT OF TRADERS REPORT

As of 4/27/2021

TRADITIONAL FUNDS net position changes

Wed to Tue, in 000 contracts

	Corn	Bean	Meal	Oil	Chi. Wheat	KC Wheat	Min Wheat
Futures Only	(1.2)	7.5	9.0	(5.2)	8.7	9.9	3.6
Futures & Options Combined	(17.5)	4.2	7.9	(2.2)	9.5	10.6	3.9

TRADITIONAL COMMERCIAL net position changes

	Corn	Bean	Meal	Oil	Chi. Wheat	KC Wheat	Min Wheat
Futures Only	0.1	(9.1)	(8.9)	5.4	(10.8)	(8.2)	(3.0)
Futures & Options Combined	16.7	(4.6)	(8.0)	2.6	(11.6)	(8.7)	(3.2)

MANAGED MONEY net position changes

	Corn	Bean	Meal	Oil	Chi. Wheat	KC Wheat	Min Wheat
Futures Only	(17.8)	8.8	5.7	1.7	10.9	11.5	2.0
Futures & Options Combined	(5.3)	7.5	6.0	2.6	11.8	11.3	2.0

SWAP DEALERS net position changes

	Corn	Bean	Meal	Oil	Chi. Wheat	KC Wheat	Min Wheat
Futures Only	0.1	0.3	0.0	1.2	(6.9)	0.9	0.0
Futures & Options Combined	(1.3)	2.3	(0.5)	2.8	(5.5)	0.6	(0.2)

PRODUCERS/END USERS net position changes

	Corn	Bean	Meal	Oil	Chi. Wheat	KC Wheat	Min Wheat
Futures Only	0.1	(9.4)	(8.9)	4.2	(3.8)	(9.2)	(3.0)
Futures & Options Combined	18.0	(6.8)	(7.5)	(0.1)	(6.0)	(9.4)	(3.0)

INDEX net position changes

	Corn	Bean	Meal	Oil	Chi. Wheat	KC Wheat	Min Wheat
Futures & Options Combined	(2.9)	10.0	8.8	5.8	1.7	5.1	NA

SUPPLEMENTAL NON-COMMERCIAL net position changes

	Corn	Bean	Meal	Oil	Chi. Wheat	KC Wheat	Min Wheat
Futures & Options Combined	(19.3)	0.9	7.1	(3.8)	6.8	6.7	NA

OPEN INTEREST net position changes

Wed to Tue, in 000 contracts

	Corn	Bean	Meal	Oil	Chi. Wheat	KC Wheat	Min Wheat
Futures Only	(111.7)	(52.3)	(9.3)	(29.6)	(16.2)	4.8	1.9
Futures & Options Combined	(148.5)	(82.4)	(17.8)	(49.9)	(0.2)	3.5	2.9

Source: CFTC and FI

Wed to Tue, in 000 contracts

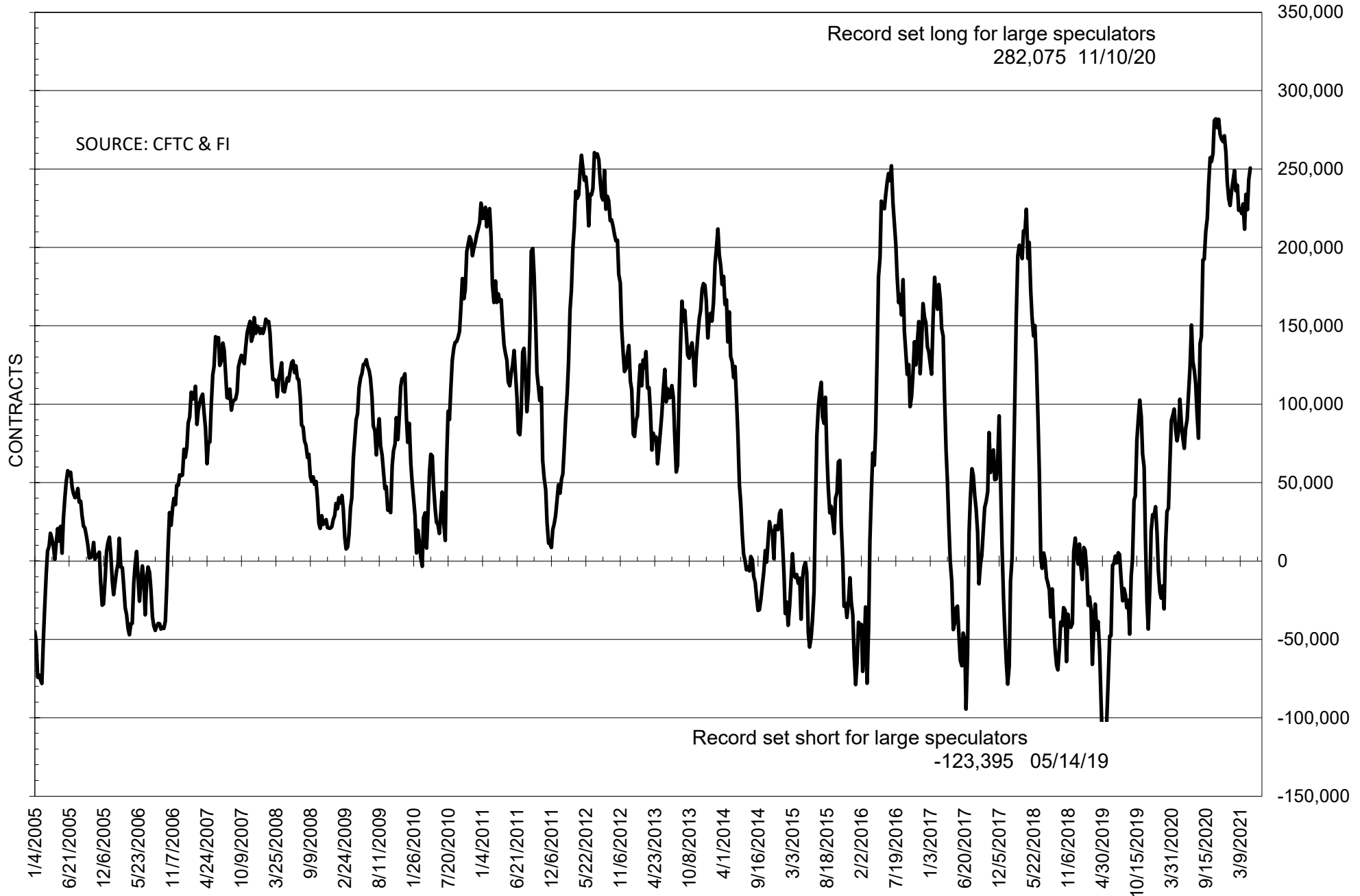
**COMMITMENT OF TRADERS
FUTURES ONLY NET POSITIONS
AS OF 04/27/2021
(IN THOUSAND CONTRACTS)**

	COMMERCIAL				(FUND) NON COMMERCIAL				(SPEC) NON-REPORTABLE			
	27-Apr	20-Apr	13-Apr	6-Apr	27-Apr	20-Apr	13-Apr	6-Apr	27-Apr	20-Apr	13-Apr	6-Apr
	WHEAT											
Chicago	-19.9	-9.1	6.0	0.8	29.7	21.0	5.5	11.2	-9.8	-11.9	-11.5	-12.0
Kansas City	-31.3	-23.1	-15.2	-11.6	32.2	22.2	15.1	12.6	-0.8	0.9	0.1	-1.0
Minneapolis	-25.4	-22.5	-16.6	-11.1	18.6	15.0	11.1	6.0	6.9	7.5	5.5	5.1
All Wheat	-76.6	-54.7	-25.7	-21.8	80.4	58.2	31.7	29.7	-3.8	-3.6	-6.0	-7.9
CORN	-488.4	-488.5	-494.7	-492.0	521.6	522.7	543.3	536.2	-33.2	-34.2	-48.6	-44.2
OATS	-2.9	-2.4	-2.2	-2.1	1.5	1.3	1.2	1.2	1.4	1.1	1.0	0.9
SOYBEANS	-248.5	-239.4	-216.0	-224.0	250.6	243.2	224.0	233.8	-2.2	-3.8	-8.0	-9.8
SOY OIL	-109.8	-115.2	-112.1	-112.9	91.3	96.5	95.1	94.7	18.5	18.7	17.0	18.2
SOY MEAL	-119.8	-110.9	-99.7	-115.2	91.9	82.9	75.7	89.5	27.9	28.0	24.1	25.7

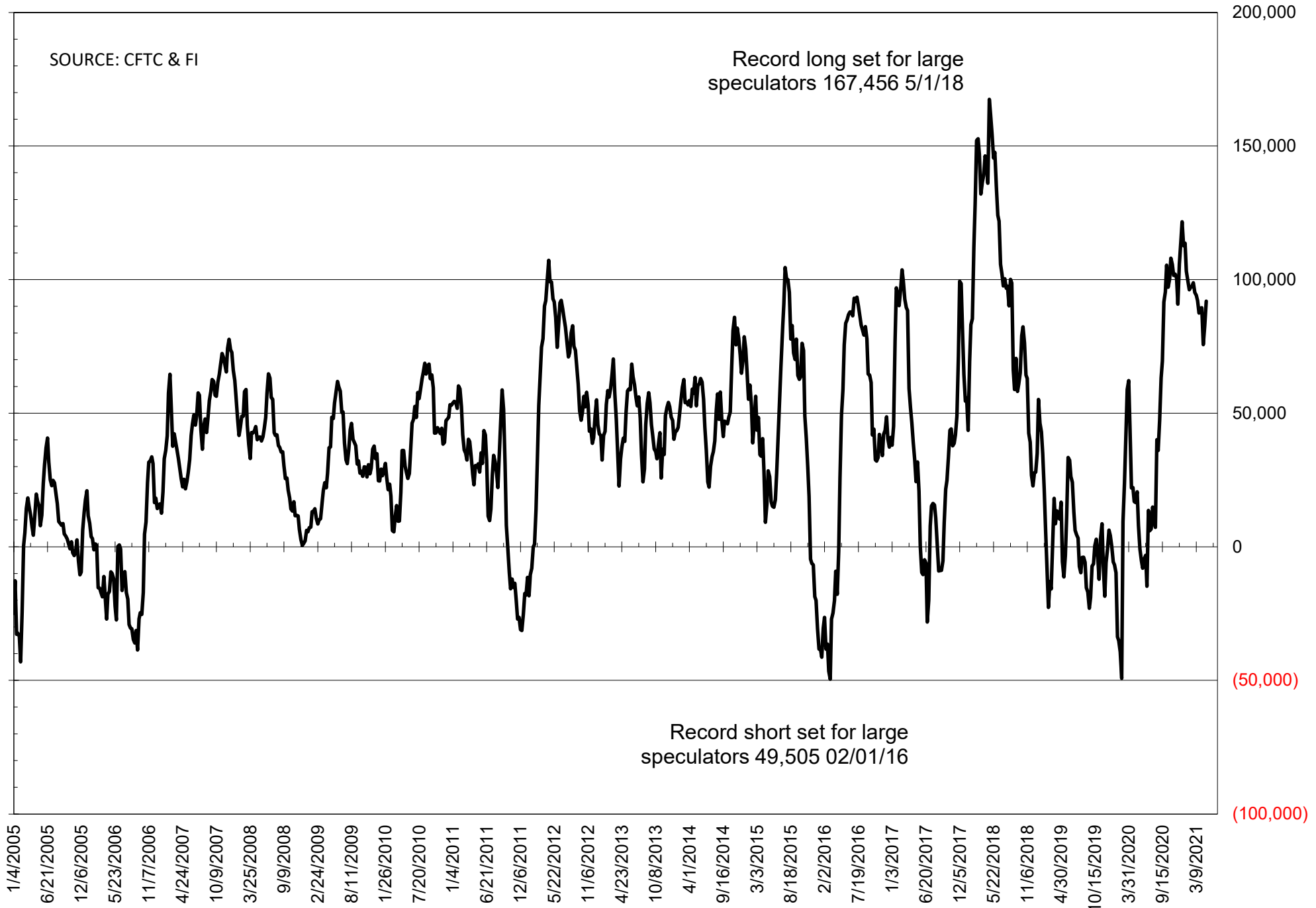
	TOTAL OPEN INTEREST				NEARBY FUTURES PRICE					27-Apr-21 LAST REPORTED % HELD BY TRADERS			
	27-Apr	20-Apr	13-Apr	6-Apr	K Latest	K 27-Apr	K 20-Apr	K 13-Apr	K 6-Apr	LARGE FUND		SMALL	
										LONG	SHORT	LONG	SHORT
WHEAT													
Chicago	425045	441233	436431	412959		733.75	659.75	629.75	615.50	0%	26%	0%	10%
Kansas City	219918	215075	221216	232449		704.25	620.75	584.75	555.50	0%	17%	0%	10%
Minneapolis	77765	75866	78379	77035		739.00	669.00	649.00	555.50	0%	3%	0%	14%
CORN	1698687	1810407	1793078	1763485		695.50	606.50	580.00	554.25	0%	4%	0%	11%
OATS	4888	4429	4201	4329		403.50	385.25	375.50	374.00	0%	2%	0%	14%
SOYBEANS	849061	901330	885436	870313		15.50	1472.00	1389.50	1418.75	36%	6%	8%	8%
SOY OIL	484659	514255	502302	497159		66.45	58.32	53.03	53.92	0%	8%	0%	5%
SOY MEAL	405359	414656	415455	414875		425.50	410.40	395.00	406.40	0%	3%	0%	6%

SOURCE: CFTC & FI

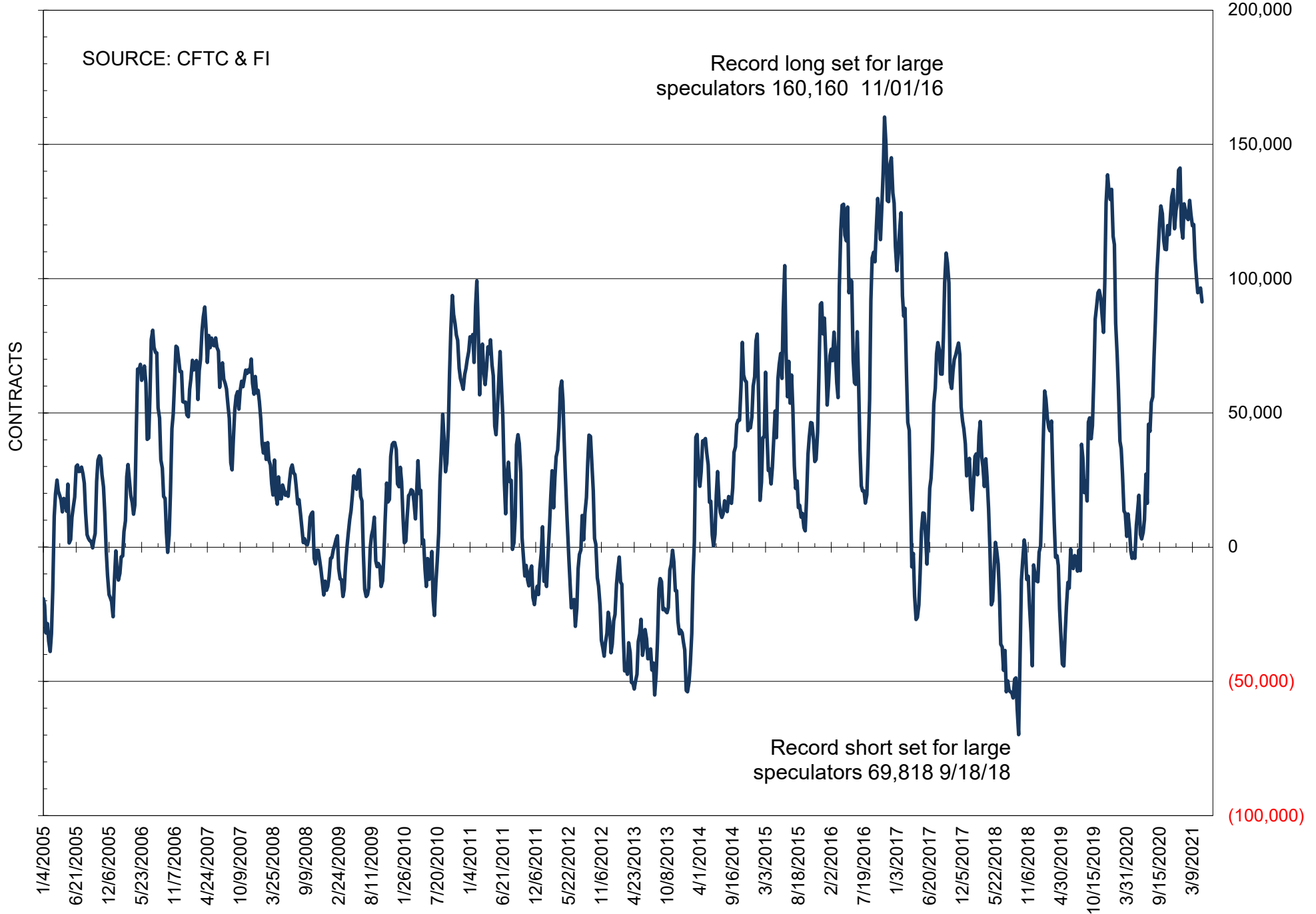
NET POSITION OF FUTURES ONLY LARGE SPECS IN SOYBEANS



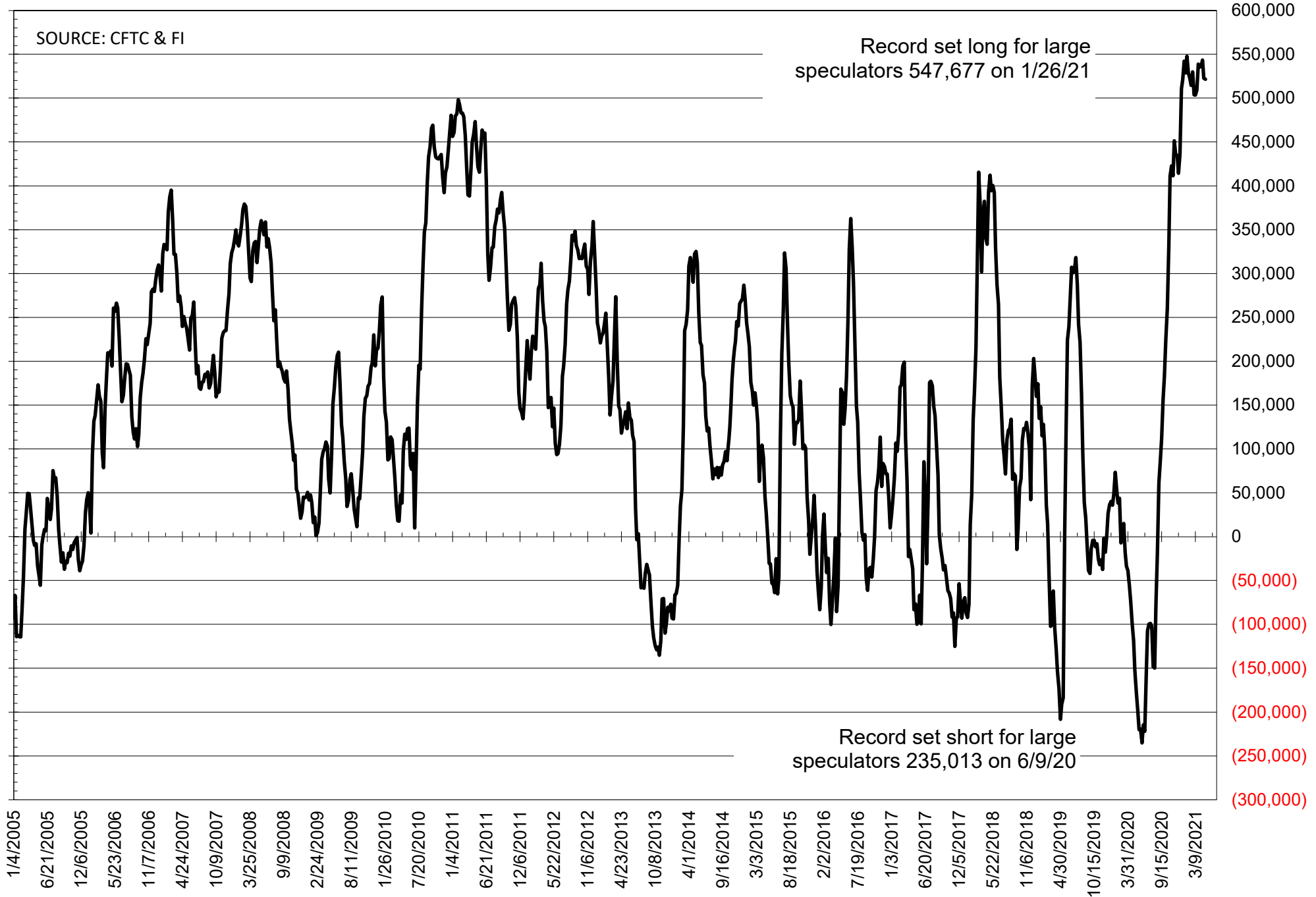
NET POSITION OF FUTURES ONLY LARGE SPECS IN SOYMEAL



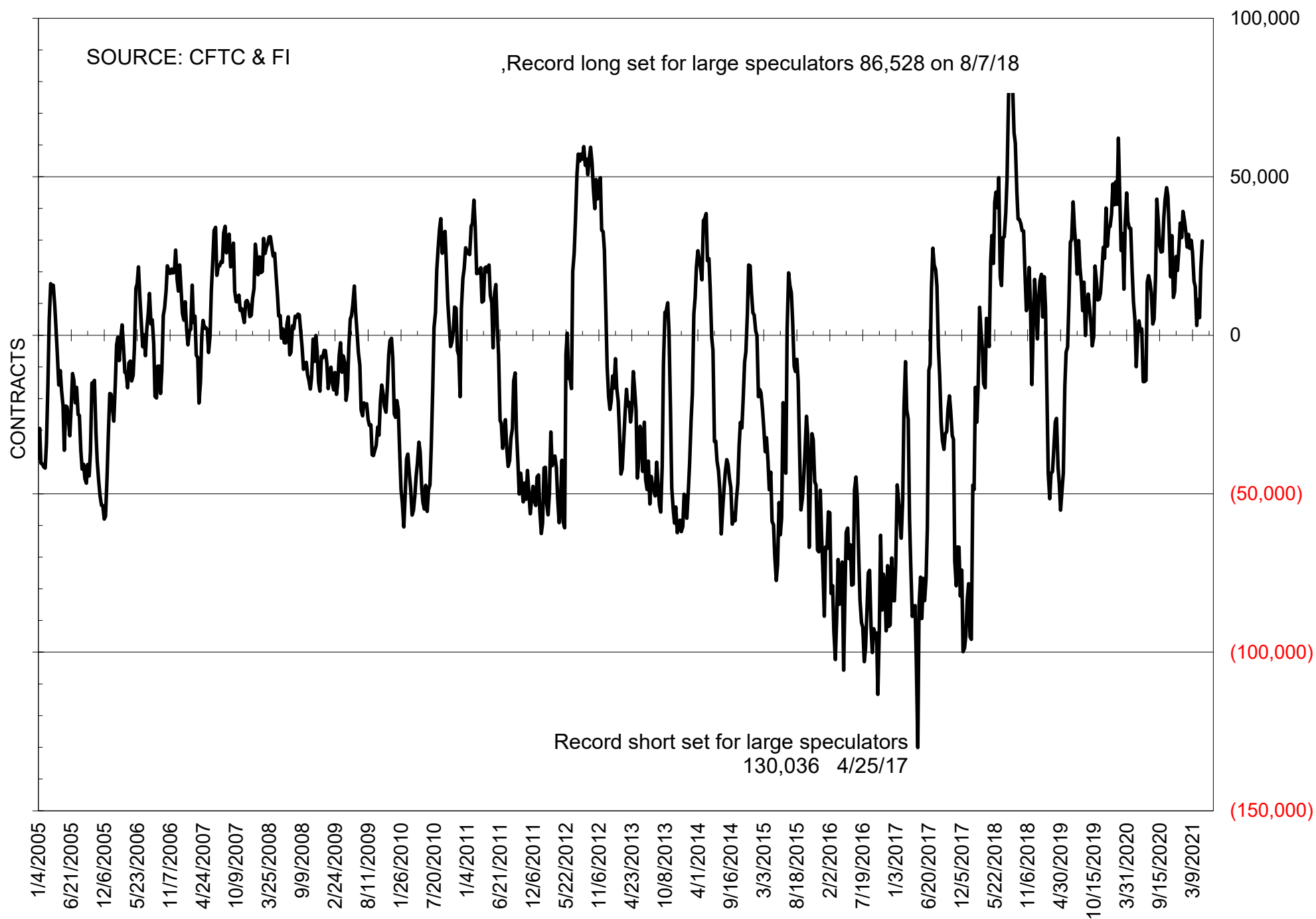
NET POSITION OF FUTURES ONLY LARGE SPECS IN SOYOIL



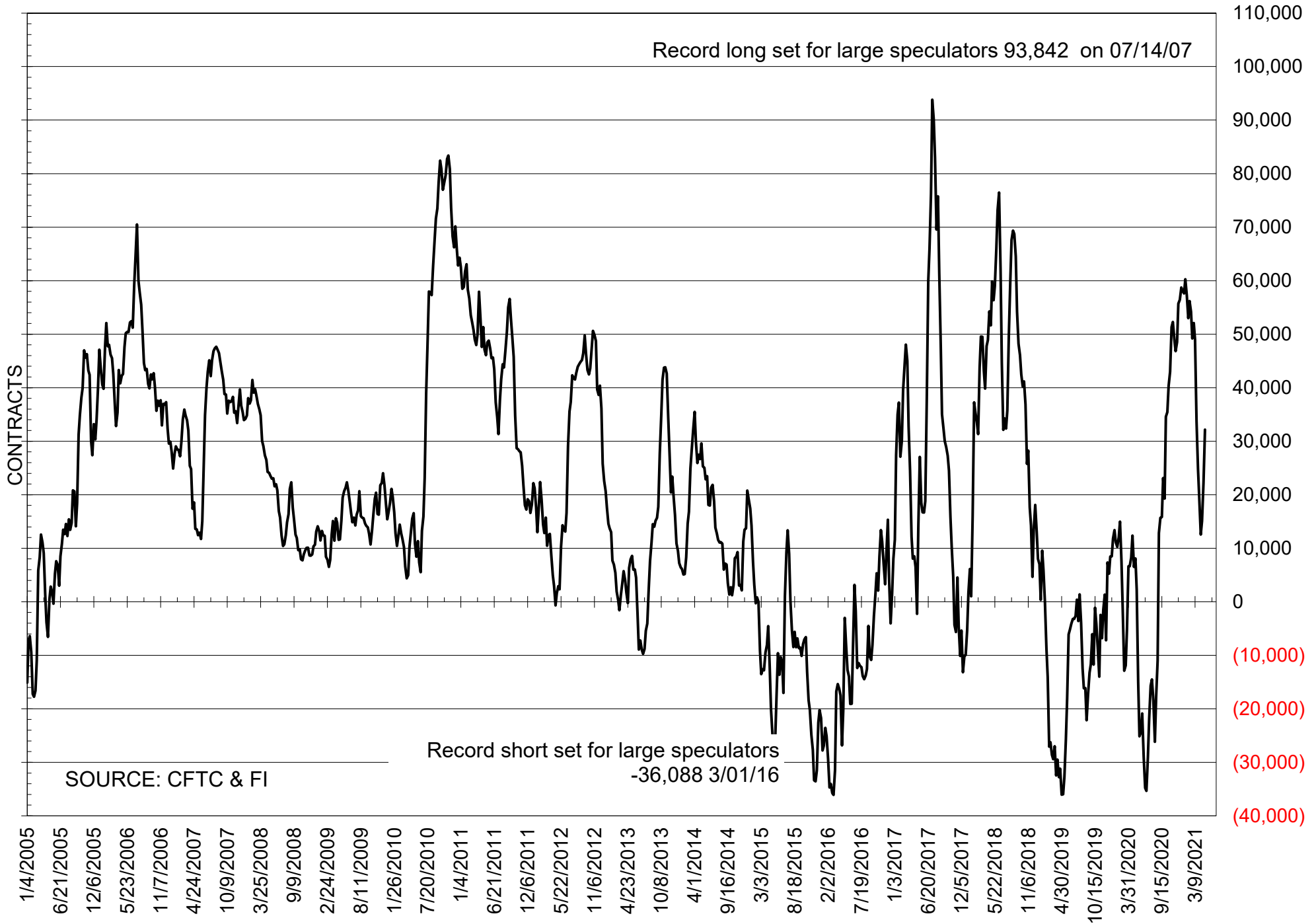
NET POSITION OF LARGE SPECULATORS IN CORN



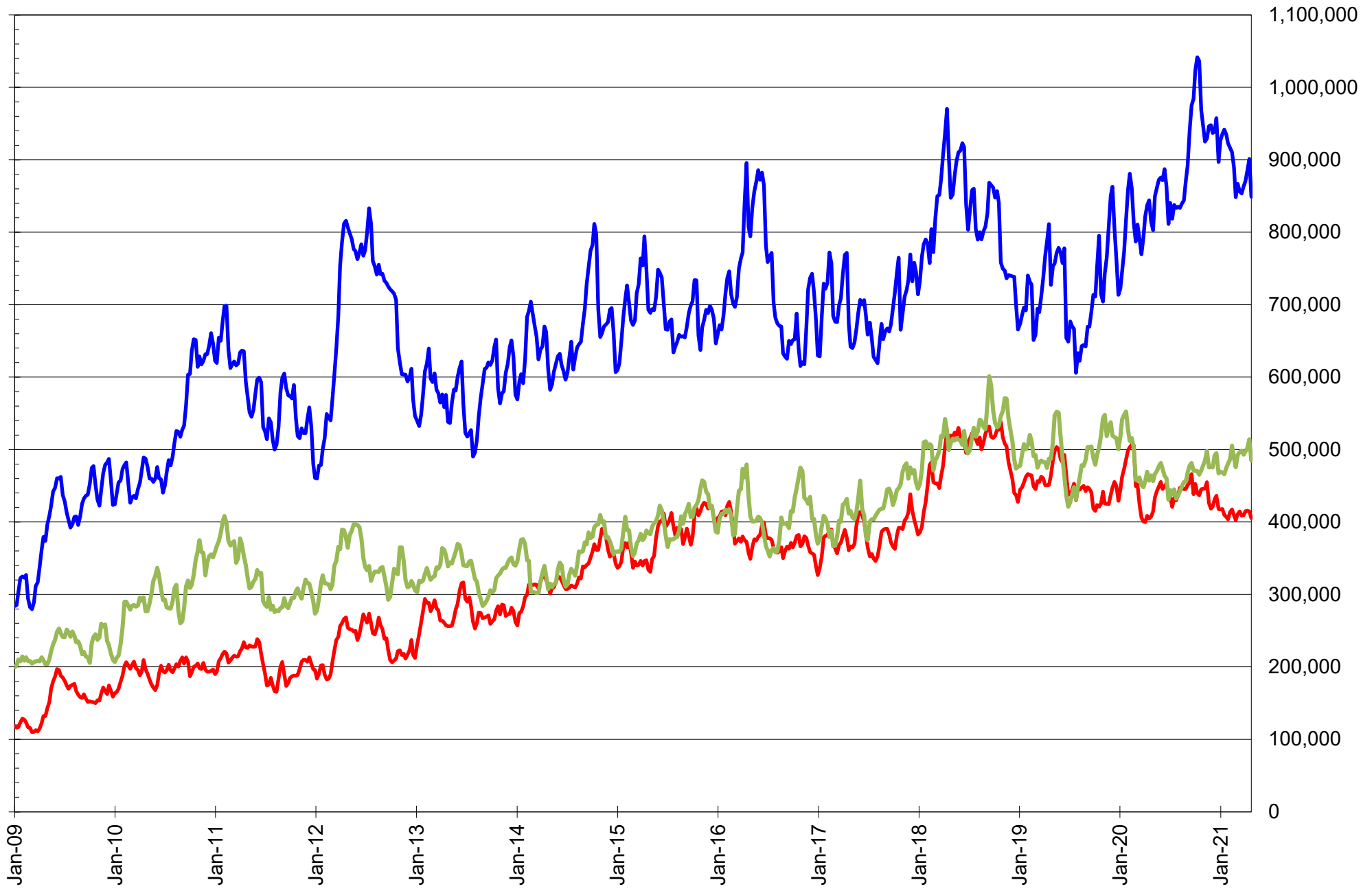
NET POSITION OF FUTURES ONLY LARGE SPECS IN CHICAGO WHEAT



NET POSITION OF LARGE SPECULATORS IN KANSAS CITY WHEAT



TOTAL OPEN INTEREST IN SOYBEANS, MEAL AND OIL, FUTURES ONLY



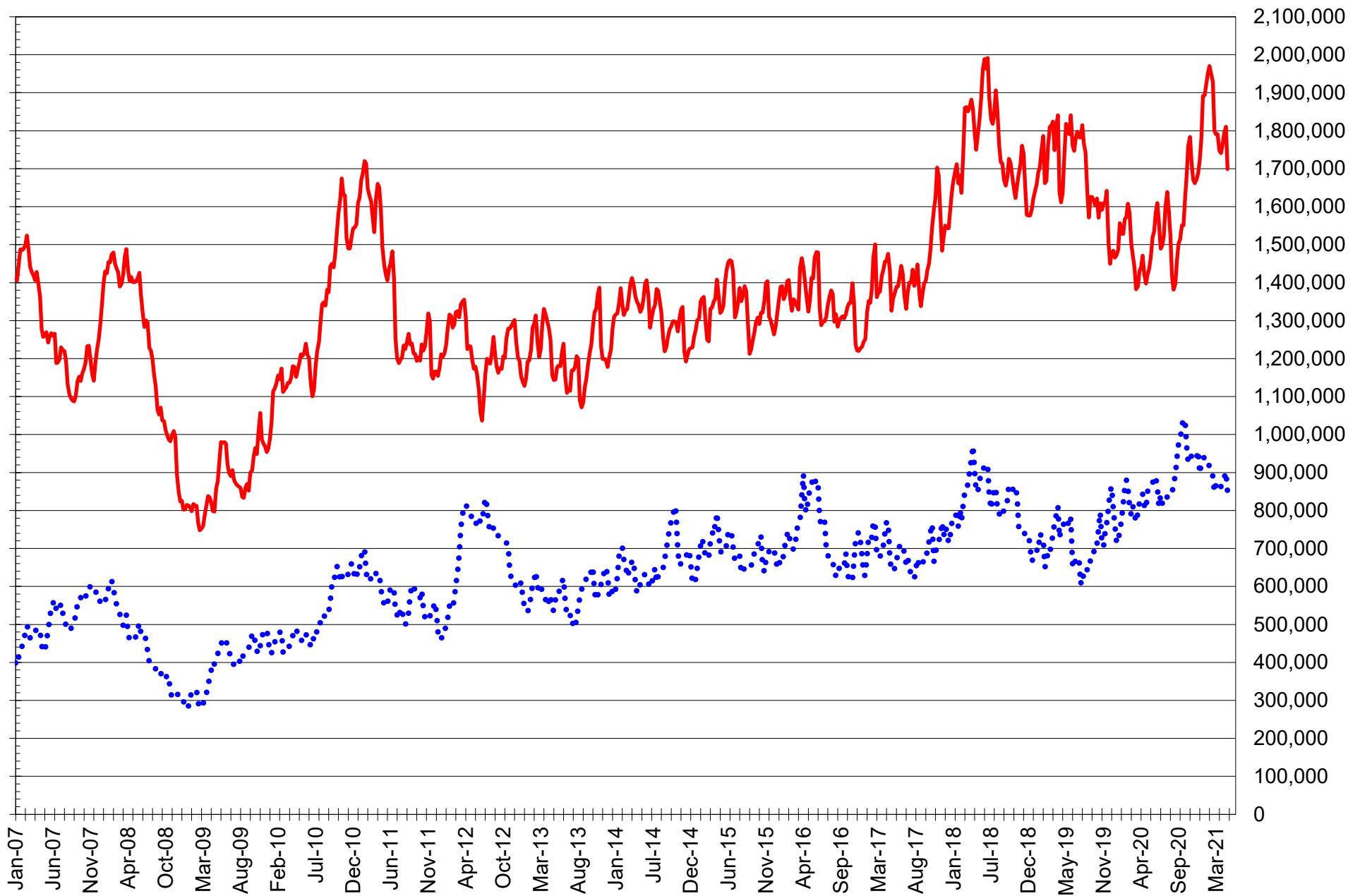
SOURCE: CFTC & FI

— SOYBEANS

— SOYBEAN MEAL

— SOYBEAN OIL

TOTAL OPEN INTEREST IN CORN AND SOYBEANS, FUTURES ONLY



SOURCE: CFTC & FI

— CORN

•••• SOYBEANS

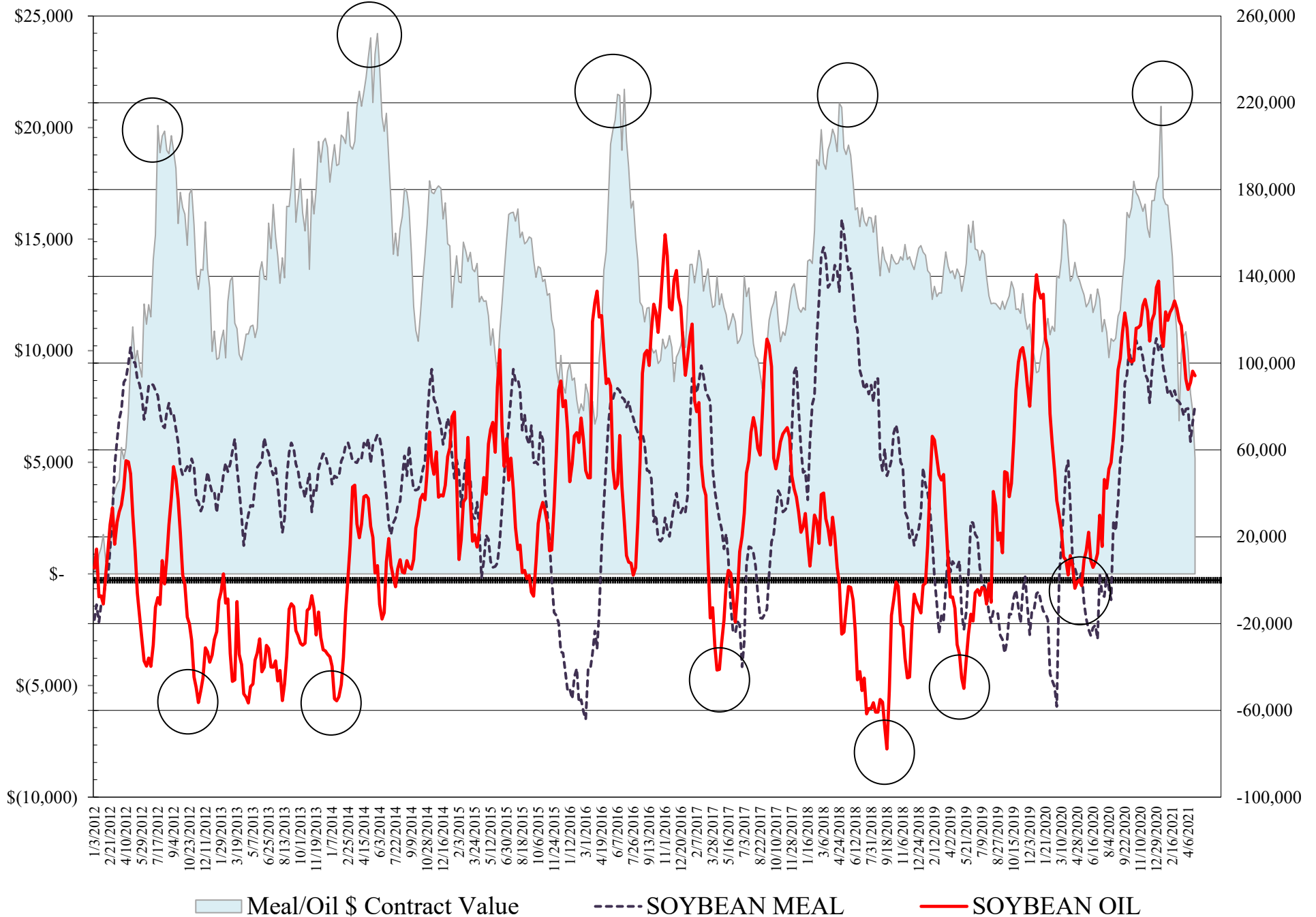
**COMMITMENT OF TRADERS
FUTURES & OPTIONS NET POSITIONS
AS OF 04/27/2021
(IN THOUSAND CONTRACTS)**

	COMMERCIAL				(FUND) NON COMMERCIAL				(SPEC) NON-REPORTABLE			
	27-Apr	20-Apr	13-Apr	6-Apr	27-Apr	20-Apr	13-Apr	6-Apr	27-Apr	20-Apr	13-Apr	6-Apr
	WHEAT											
Chicago	-25.1	-13.5	2.8	-0.8	35.6	26.1	9.4	13.8	-10.5	-12.5	-12.2	-13.0
Kansas City	-29.3	-20.6	-11.4	-7.1	30.4	19.7	11.2	8.3	-1.0	0.9	0.1	-1.2
Minneapolis	-25.0	-21.8	-15.8	-10.0	17.4	13.5	9.7	4.4	7.6	8.3	6.1	5.5
All Wheat	-79.4	-55.9	-24.3	-17.9	83.3	59.3	30.3	26.5	-4.0	-3.3	-6.0	-8.6
CORN	-470.8	-487.6	-495.0	-478.6	486.6	504.1	526.1	509.4	-15.8	-16.6	-31.1	-30.8
OATS	-2.9	-2.4	-2.2	-2.1	1.5	1.3	1.1	1.2	1.4	1.1	1.0	0.9
SOYBEANS	-212.5	-207.9	-169.1	-182.8	209.2	204.9	172.3	186.0	3.3	3.0	-3.2	-3.2
SOY OIL	-113.1	-115.7	-108.7	-106.8	94.2	96.3	91.0	87.8	18.9	19.4	17.7	19.0
SOY MEAL	-113.9	-105.8	-92.6	-109.8	80.5	72.6	63.8	79.1	33.4	33.2	28.8	30.6

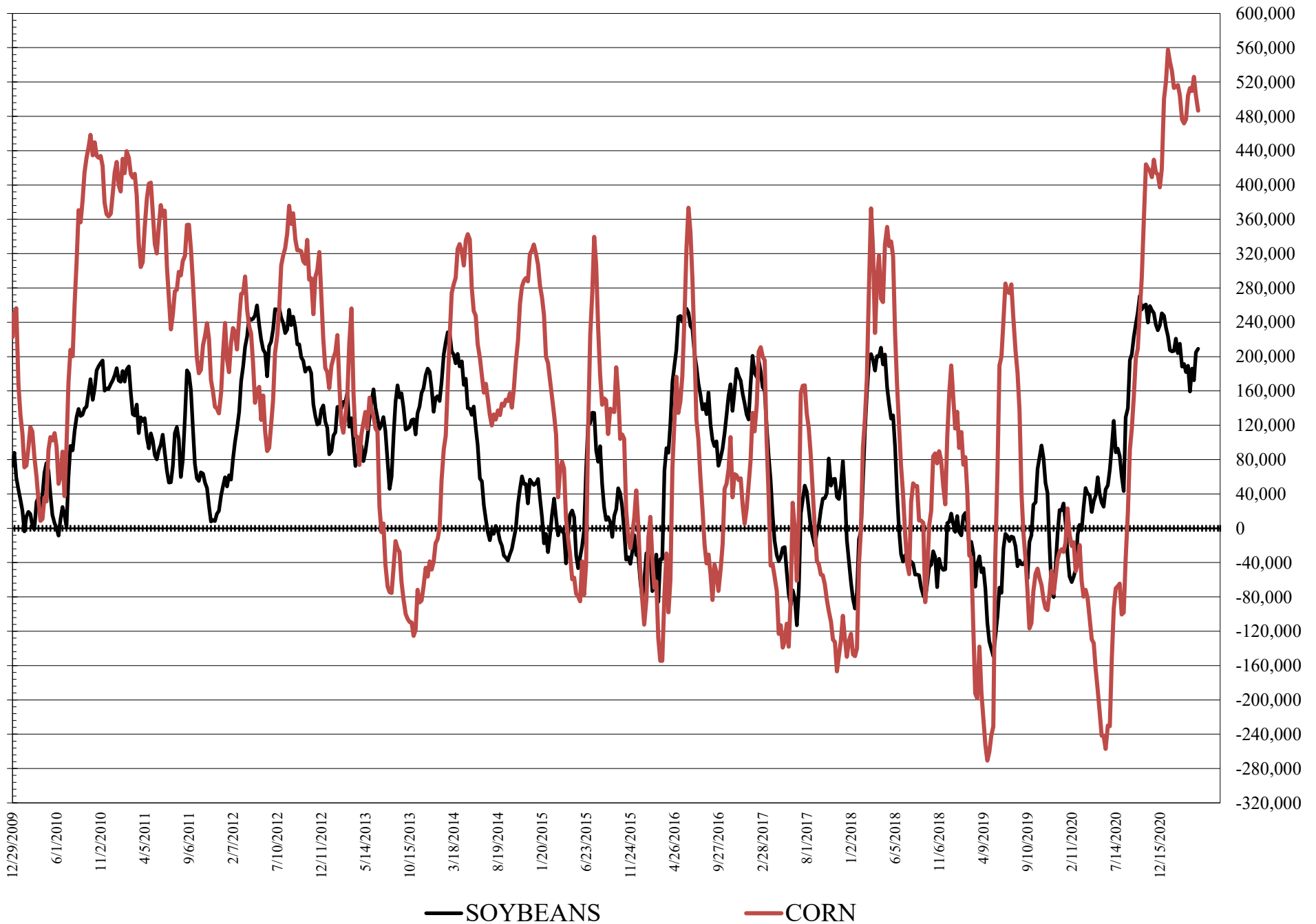
	TOTAL OPEN INTEREST				COMMERCIALS		% HELD BY TRADERS LARGE (FUNDS)		SMALL (NON-REP)	
	27-Apr	20-Apr	13-Apr	6-Apr	LONG	SHORT	LONG	SHORT	LONG	SHORT
	WHEAT									
Chicago	548,366	548,563	528,463	500,331	33%	38%	24%	17%	6%	8%
Kansas City	237,214	233,678	238,080	249,263	40%	53%	29%	16%	9%	10%
Minneapolis	84,487	81,610	83,605	81,757	43%	73%	23%	3%	23%	14%
CORN	2,399,229	2,547,704	2,448,675	2,364,959	41%	60%	23%	3%	9%	10%
OATS	4,953	4,488	4,267	4,400						
SOYBEANS	1,167,102	1,249,501	1,208,328	1,193,107	40%	58%	22%	4%	7%	7%
SOY OIL	572,191	622,088	598,089	603,836	46%	66%	23%	6%	8%	4%
SOY MEAL	459,296	477,120	477,525	476,527	47%	71%	20%	3%	13%	6%

SOURCE: CFTC & FI

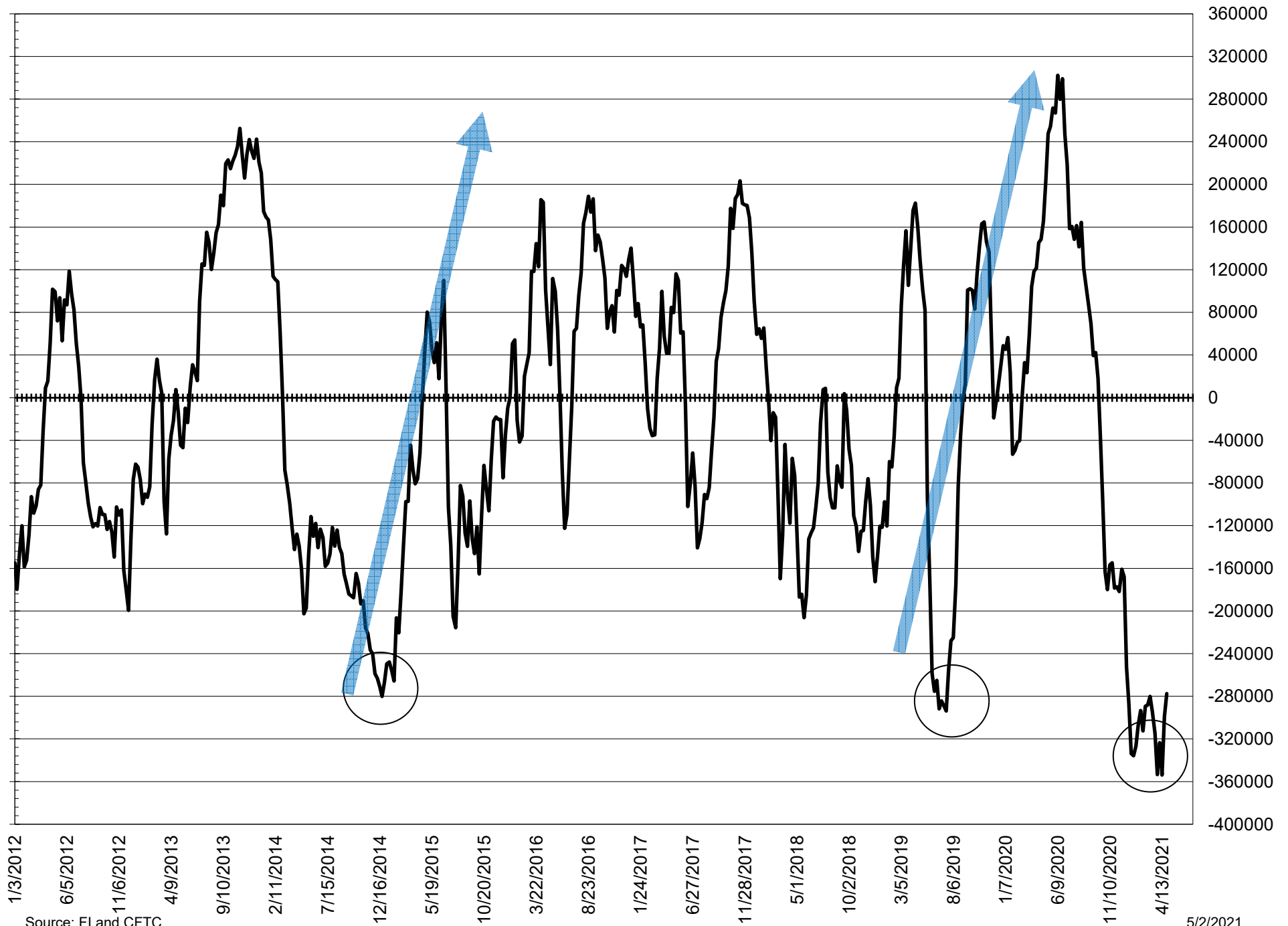
NET POSITION FUTURES AND OPTIONS OF LARGE SPECULATORS IN SOYBEAN MEAL AND SOYBEAN OIL



NET POSITION FUTURES AND OPTIONS OF LARGE SPECULATORS IN SOYBEANS AND CORN



NET POSITION FUTURES AND OPTIONS SPREAD OF LARGE SPECULATORS IN SOYBEANS MINUS CORN



Source: FI and CFTC

5/2/2021

**DISAGGREGATED COMMITMENT OF TRADERS
FUTURES ONLY NET POSITIONS
AS OF 04/27/2021
(IN THOUSAND CONTRACTS)**

	PRODUCER / MERCHANT / PROCESSOR / USER				(INDEX/ETF) SWAP DEALERS				(CTA/CPO/OTHER UNREGISTERED) MANAGED MONEY			
	27-Apr	20-Apr	13-Apr	6-Apr	27-Apr	20-Apr	13-Apr	6-Apr	27-Apr	20-Apr	13-Apr	6-Apr
	WHEAT											
Chicago	(103.3)	(99.5)	(88.1)	(89.3)	83.5	90.4	94.1	90.2	7.2	(3.7)	(19.2)	(12.0)
Kansas City	(77.3)	(68.2)	(60.5)	(53.2)	46.0	45.1	45.4	41.6	30.1	18.6	10.8	13.9
Minneapolis	(29.1)	(26.1)	(20.8)	(15.5)	3.7	3.6	4.2	4.5	14.0	12.1	9.6	5.5
All Wheat	(209.8)	(193.8)	(169.4)	(158.0)	133.2	139.1	143.7	136.2	51.4	27.0	1.3	7.4
CORN	(754.3)	(754.4)	(757.9)	(747.6)	266.0	265.9	263.2	255.7	362.2	380.1	397.2	379.6
OATS	(3.0)	(2.5)	(2.3)	(2.2)	0.1	0.1	0.1	0.1	1.0	0.8	0.6	0.7
SOYBEANS	(314.0)	(304.7)	(284.9)	(295.9)	65.6	65.3	68.8	71.9	168.9	160.1	130.3	141.1
SOY OIL	(212.3)	(216.5)	(213.2)	(211.2)	102.6	101.3	101.2	98.3	88.9	87.2	79.2	74.8
SOY MEAL	(195.4)	(186.4)	(174.6)	(185.4)	75.6	75.5	74.8	70.3	52.9	47.2	42.8	60.4

	Managed % of OI			
Chicago W	2%	-1%	-4%	-3%
Corn	21%	21%	22%	22%

	TOTAL OPEN INTEREST				OTHER REPORTABLE				NON REPORTABLE			
	27-Apr	20-Apr	13-Apr	6-Apr	27-Apr	20-Apr	13-Apr	6-Apr	27-Apr	20-Apr	13-Apr	6-Apr
	WHEAT											
Chicago	425,045	441,233	436,431	412,959	22.5	24.7	24.7	23.2	(9.8)	(11.9)	(11.5)	(12.0)
Kansas City	219,918	215,075	221,216	232,449	2.0	3.6	4.3	(1.4)	(0.8)	0.9	0.1	(1.0)
Minneapolis	77,765	75,866	78,379	77,035	4.5	2.9	1.4	0.5	6.9	7.5	5.5	5.1
All Wheat	722,728	732,174	736,026	722,443	29.1	31.3	30.4	22.3	(3.8)	(3.6)	(6.0)	(7.9)
CORN	1,698,687	1,810,407	1,793,078	1,763,485	159.3	142.7	146.1	156.5	(33.2)	(34.2)	(48.6)	(44.2)
OATS	4,888	4,429	4,201	4,329	0.6	0.5	0.6	0.6	1.4	1.1	1.0	0.9
SOYBEANS	849,061	901,330	885,436	870,313	81.8	83.1	93.7	92.7	(2.2)	(3.8)	(8.0)	(9.8)
SOY OIL	484,659	514,255	502,302	497,159	2.4	9.2	15.9	19.9	18.5	18.7	17.0	18.2
SOY MEAL	405,359	414,656	415,455	414,875	39.1	35.7	32.8	29.0	27.9	28.0	24.1	25.7

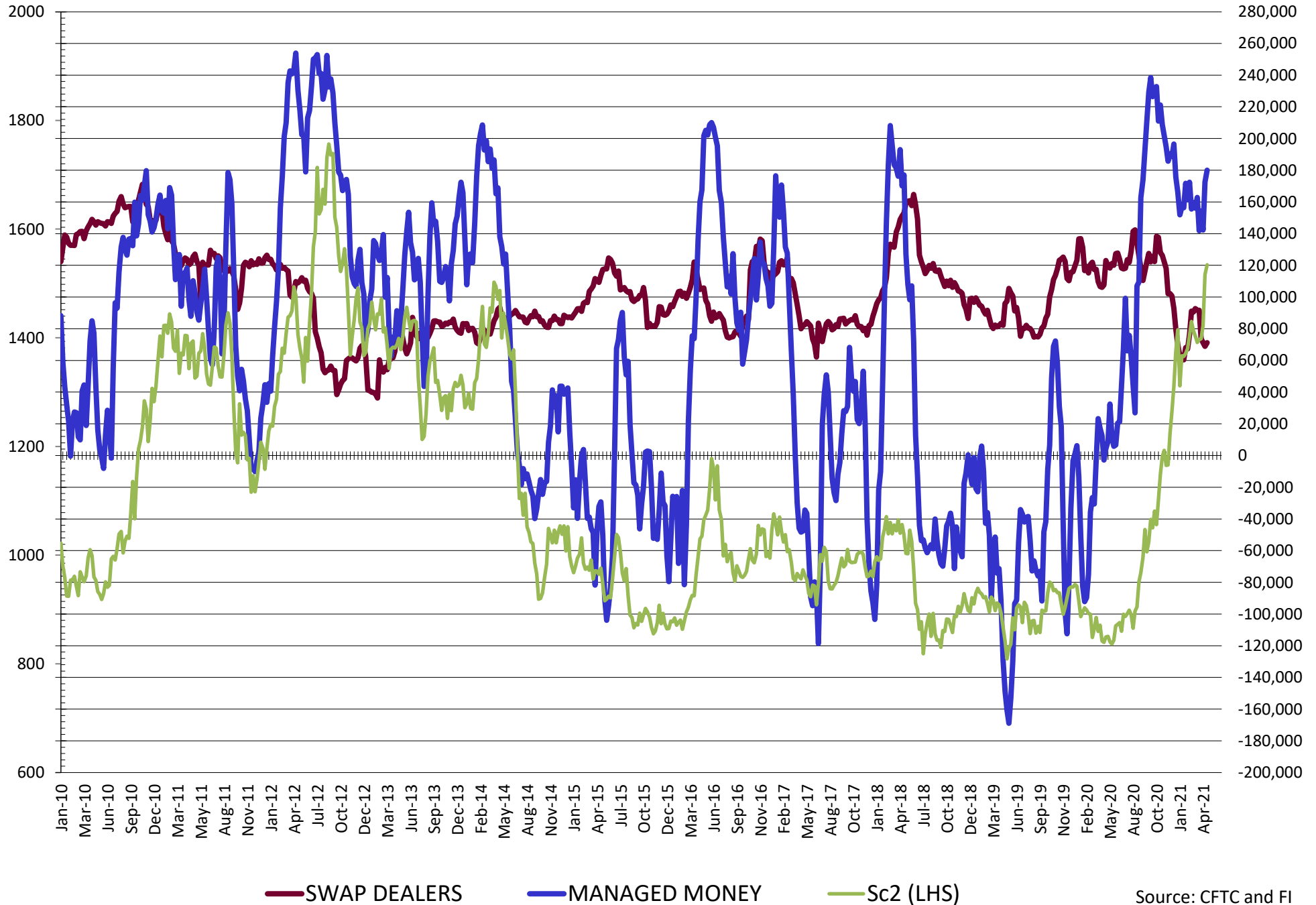
SOURCE: CFTC & FI

**DISAGGREGATED COMMITMENT OF TRADERS
FUTURES & OPTIONS NET POSITIONS
AS OF 04/27/2021
(IN THOUSAND CONTRACTS)**

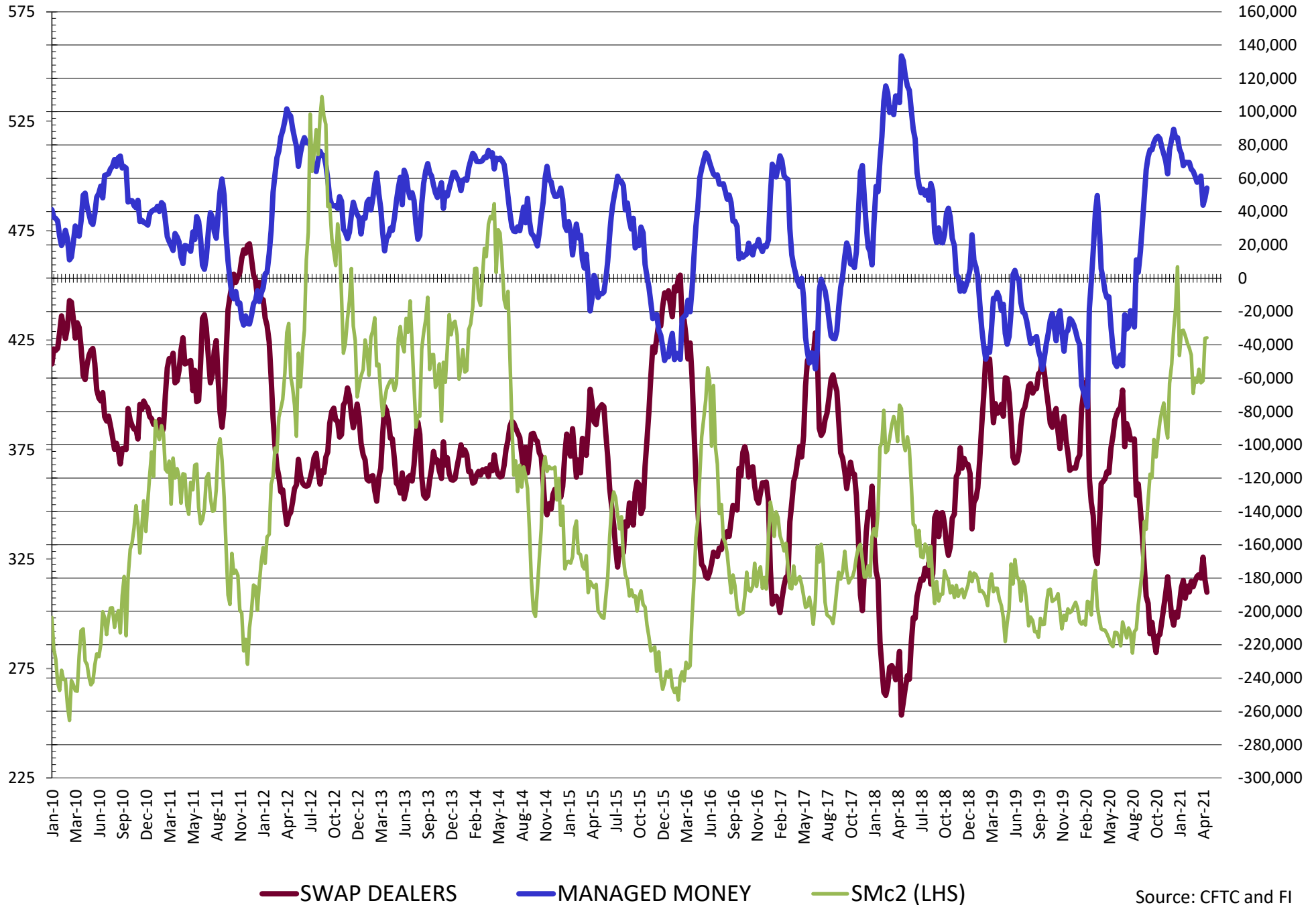
	PRODUCER / MERCHANT / PROCESSOR / USER				(INDEX/ETF) SWAP DEALERS				(CTA/CPO/OTHER UNREGISTERED) MANAGED MONEY			
	27-Apr	20-Apr	13-Apr	6-Apr	27-Apr	20-Apr	13-Apr	6-Apr	27-Apr	20-Apr	13-Apr	6-Apr
	WHEAT											
Chicago	(105.9)	(99.9)	(89.5)	(91.1)	80.8	86.4	92.3	90.3	13.4	1.6	(13.2)	(7.6)
Kansas City	(74.7)	(65.3)	(56.6)	(48.8)	45.4	44.8	45.3	41.8	30.0	18.7	11.0	14.5
Minneapolis	(28.4)	(25.4)	(20.0)	(14.4)	3.5	3.7	4.2	4.4	14.1	12.1	9.7	5.5
All Wheat	(209.1)	(190.7)	(166.1)	(154.4)	129.7	134.8	141.8	136.5	57.5	32.4	7.5	12.4
CORN	(710.6)	(728.6)	(735.6)	(713.9)	239.8	241.1	240.6	235.3	378.7	384.0	402.0	386.6
OATS	(3.0)	(2.6)	(2.3)	(2.2)	0.1	0.1	0.1	0.1	1.0	0.8	0.6	0.7
SOYBEANS	(283.6)	(276.8)	(240.2)	(256.5)	71.1	68.9	71.1	73.7	180.0	172.5	142.3	154.3
SOY OIL	(218.8)	(218.7)	(211.5)	(207.2)	105.8	103.0	102.8	100.4	92.6	90.0	81.2	77.0
SOY MEAL	(188.5)	(181.0)	(167.5)	(180.0)	74.7	75.2	74.8	70.2	54.1	48.0	43.8	61.3
	TOTAL				OTHER REPORTABLE				NON REPORTABLE			
	OPEN INTEREST				SWAP DEALERS				MANAGED MONEY			
	27-Apr	20-Apr	13-Apr	6-Apr	27-Apr	20-Apr	13-Apr	6-Apr	27-Apr	20-Apr	13-Apr	6-Apr
WHEAT												
Chicago	548,366	548,563	528,463	500,331	22.2	24.5	22.7	21.4	(10.5)	(12.5)	(12.2)	(13.0)
Kansas City	237,214	233,678	238,080	249,263	0.3	1.0	0.2	(6.2)	(1.0)	0.9	0.1	(1.2)
Minneapolis	84,487	81,610	83,605	81,757	3.3	1.3	(0.0)	(1.0)	7.6	8.3	6.1	5.5
All Wheat	870,067	863,851	850,148	831,351	25.8	26.8	22.8	14.1	(4.0)	(3.3)	(6.0)	(8.6)
CORN	2,399,229	2,547,704	2,448,675	2,364,959	108.0	120.2	124.1	122.8	(15.8)	(16.6)	(16.6)	(16.6)
OATS	4,953	4,488	4,267	4,400	0.6	0.5	0.5	0.5	1.4	1.1	1.0	0.9
SOYBEANS	1,167,102	1,249,501	1,208,328	1,193,107	29.2	32.4	30.1	31.7	3.3	3.0	(3.2)	(3.2)
SOY OIL	572,191	622,088	598,089	603,836	1.6	6.3	9.9	10.8	18.9	19.4	17.7	19.0
SOY MEAL	459,296	477,120	477,525	476,527	26.4	24.6	20.0	17.8	33.4	33.2	28.8	30.6

SOURCE: CFTC & FI

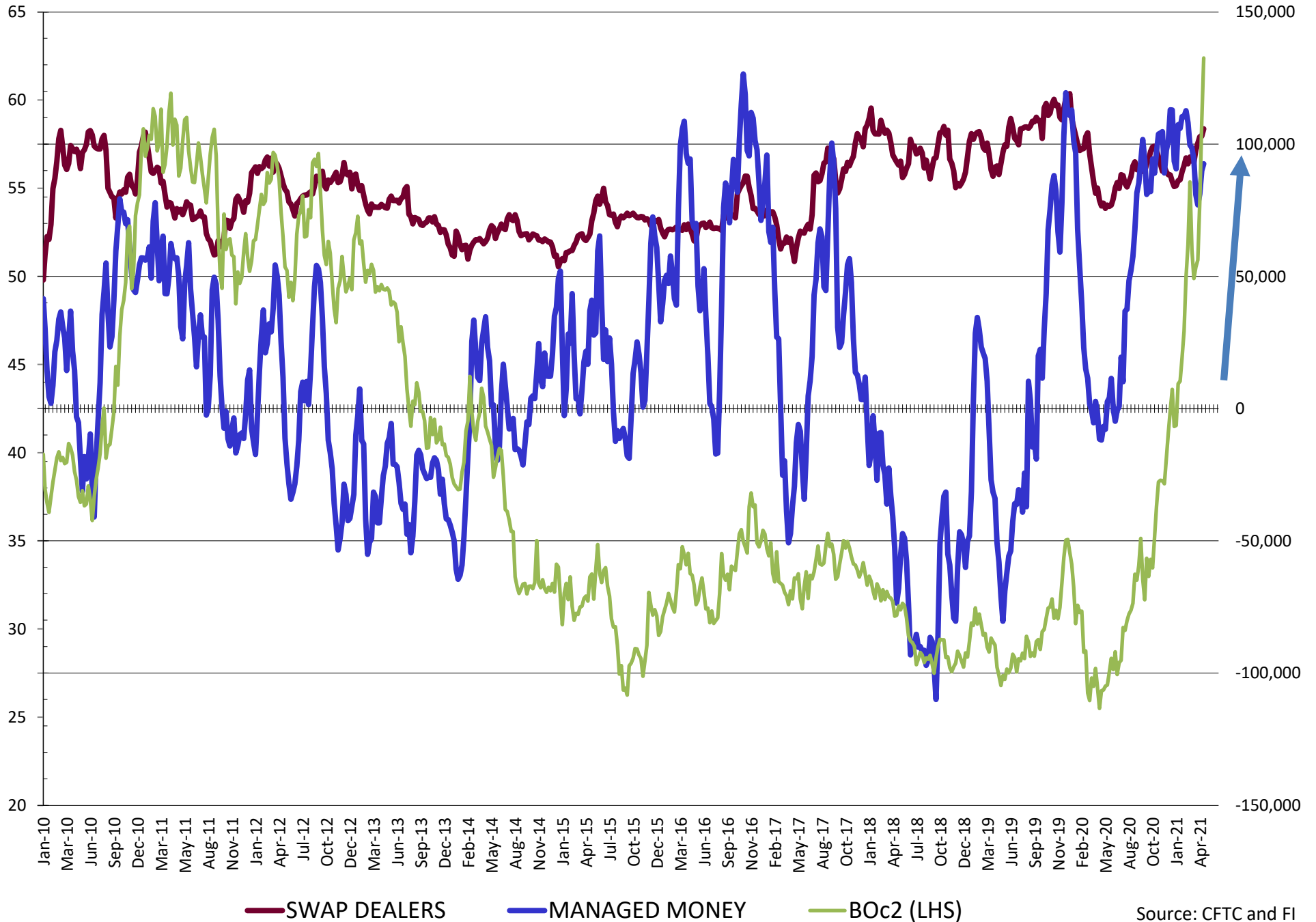
NET POSITION FUTURES AND OPTIONS OF SWAP AND MANAGED FUNDS IN SOYBEANS



NET POSITION FUTURES AND OPTIONS OF SWAP AND MANAGED FUNDS IN SOYBEAN MEAL

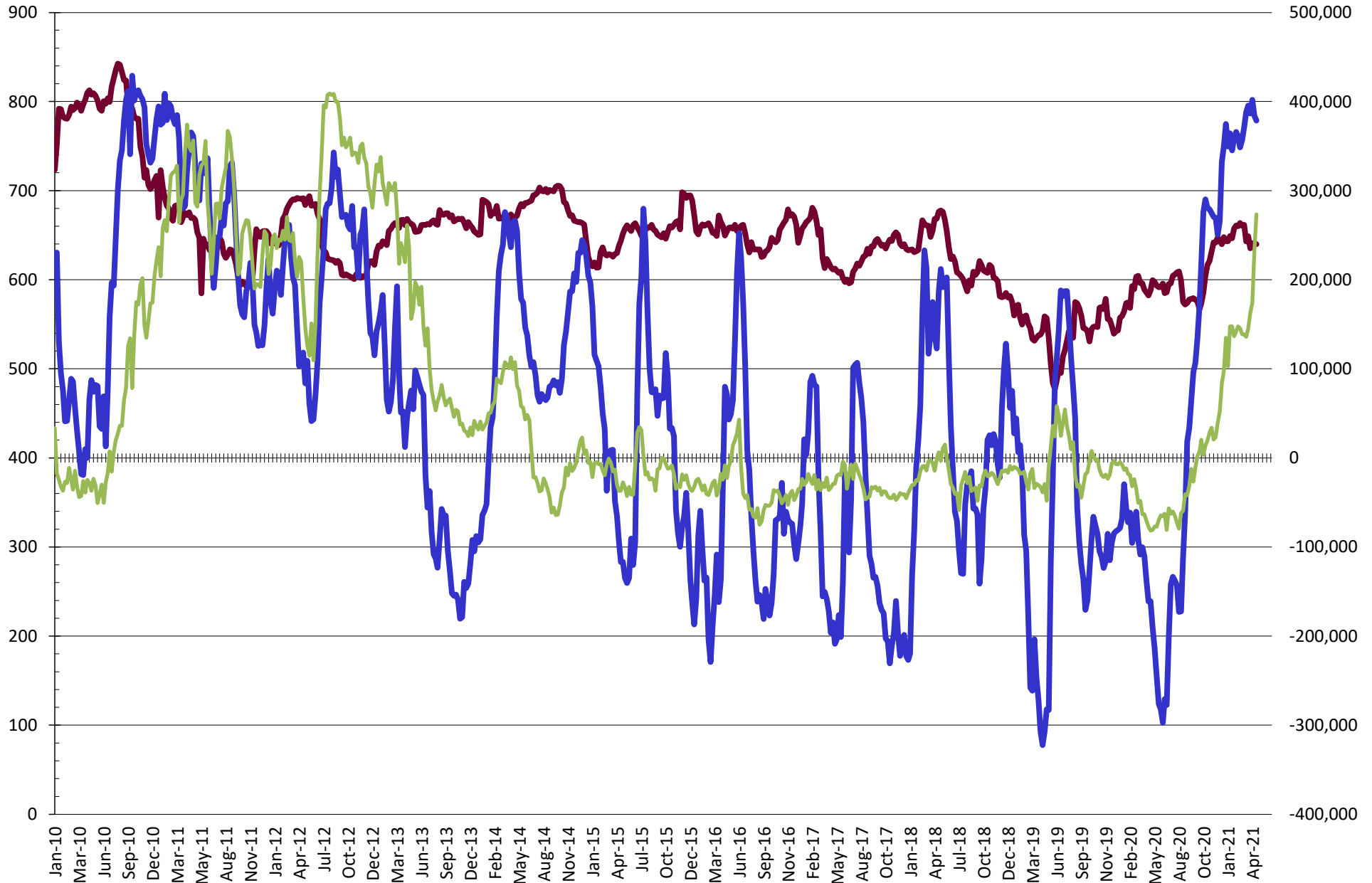


NET POSITION FUTURES AND OPTIONS OF SWAP AND MANAGED FUNDS IN SOYBEAN OIL



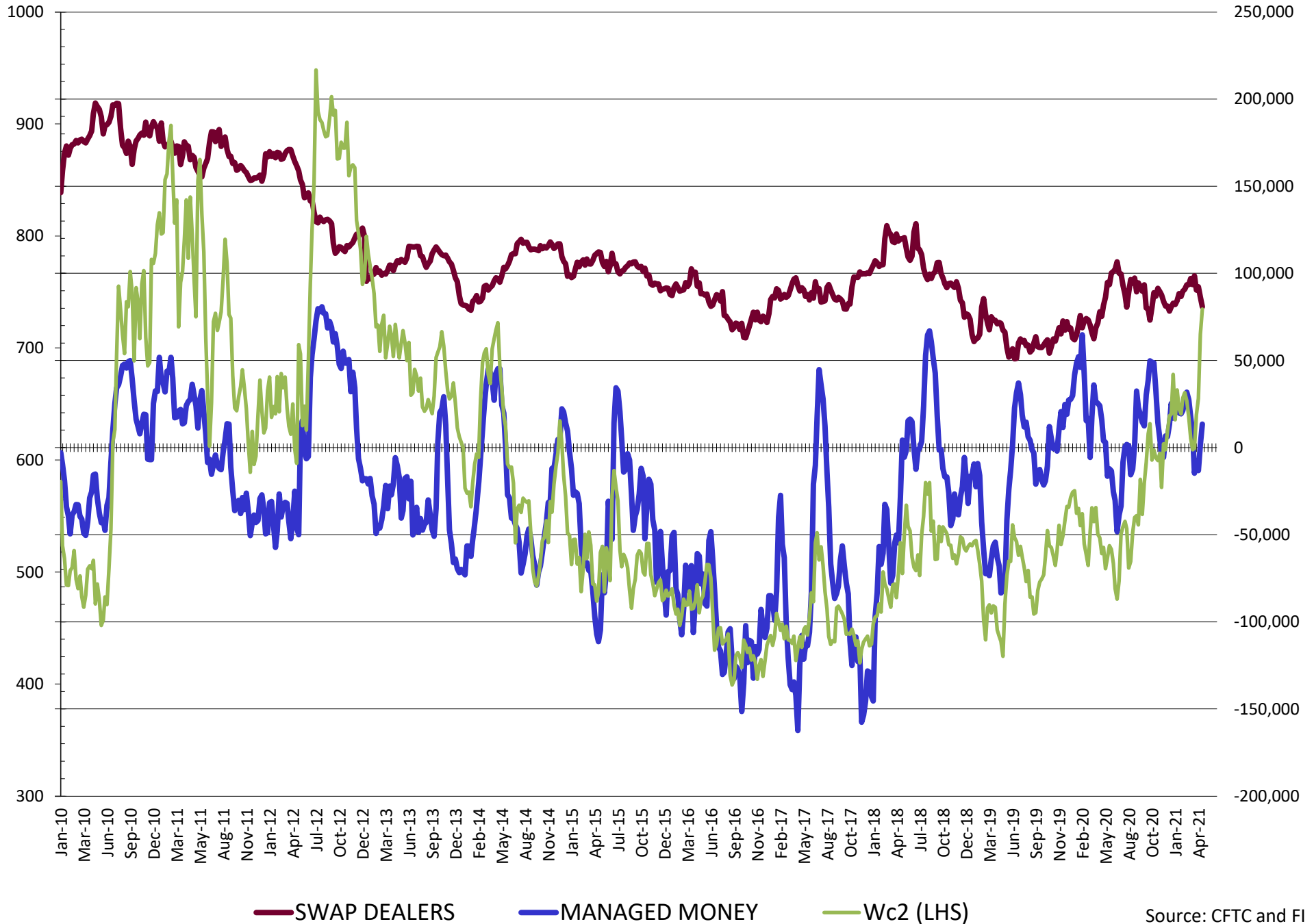
Source: CFTC and FI
5/2/2021

NET POSITION FUTURES AND OPTIONS OF SWAP AND MANAGED FUNDS IN CORN

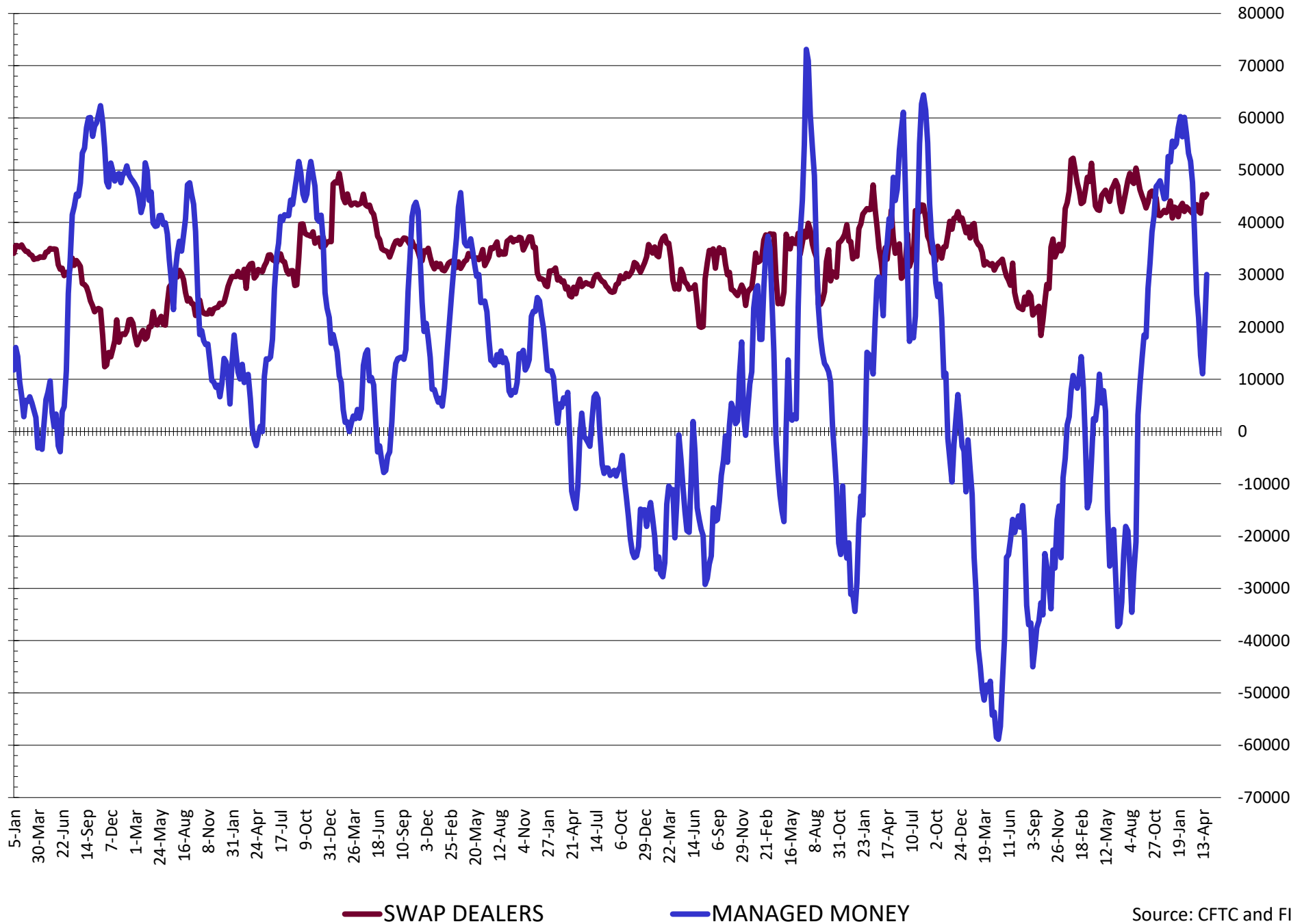


— SWAP DEALERS
 — MANAGED MONEY
 — Cc2 (LHS)

NET POSITION FUTURES AND OPTIONS OF SWAP AND MANAGED FUNDS IN CHICAGO WHEAT

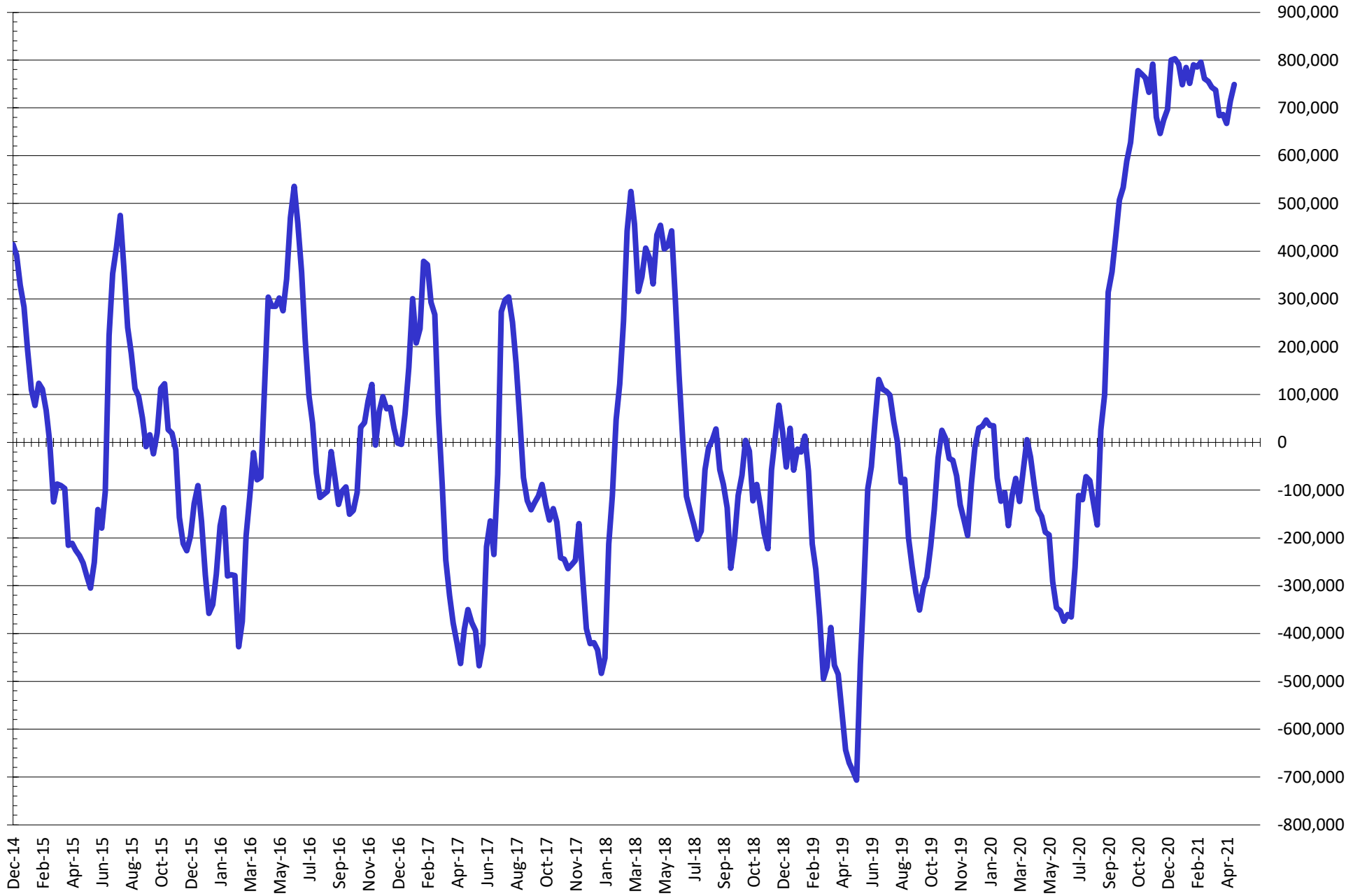


NET POSITION FUTURES AND OPTIONS OF SWAP AND MANAGED FUNDS IN KANSAS WHEAT



Source: CFTC and FI
5/2/2021

NET POSITION FUTURES AND OPTIONS OF SWAP AND MANAGED FUNDS IN COMBINED SRW, HRW, CORN, SOYBEANS, SOYMEAL AND SOYOIL



— Net Managed Money

Source: CFTC and FI
5/2/2021

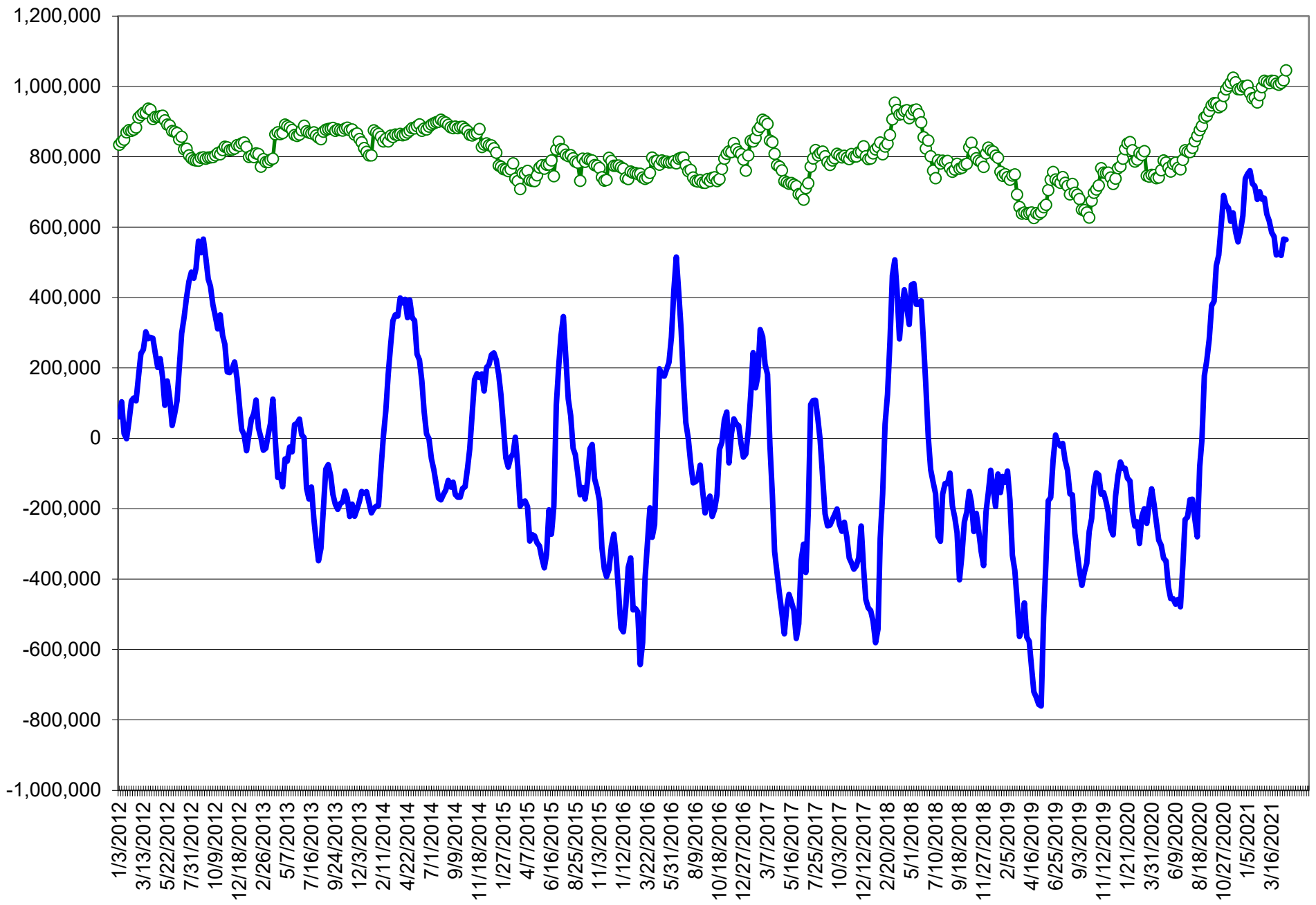
COMMITMENT OF TRADERS
FUTURES & OPTIONS NET POSITIONS (INDEX BROKEN OUT)
AS OF 04/27/2021
(IN THOUSAND CONTRACTS)

	COMMERCIAL				(FUND) NON COMMERCIAL				(SPEC) NON-REPORTABLE			
	27-Apr	20-Apr	13-Apr	6-Apr	27-Apr	20-Apr	13-Apr	6-Apr	27-Apr	20-Apr	13-Apr	6-Apr
	WHEAT											
Chicago	(131.3)	(120.8)	(107.7)	(107.0)	(18.5)	(25.3)	(40.5)	(35.5)	(10.5)	(12.5)	(12.2)	(13.0)
Kansas City	(81.2)	(71.3)	(62.5)	(56.8)	13.5	6.8	(0.4)	(3.1)	(1.0)	0.9	0.1	(1.2)
Minneapolis	-	-	-	-	-	-	-	-	-	-	-	-
All Wheat	(212.5)	(192.1)	(170.2)	(163.7)	(5.0)	(18.5)	(40.8)	(38.5)	(11.5)	(11.7)	(12.1)	(14.2)
CORN	(733.7)	(755.1)	(758.1)	(739.3)	335.6	354.9	375.8	355.7	(15.8)	(16.6)	(31.1)	(30.8)
OATS	-	-	-	-	-	-	-	-	-	-	-	-
SOYBEANS	(320.3)	(309.0)	(270.2)	(283.4)	133.9	133.0	102.0	114.5	3.3	3.0	(3.2)	(3.2)
SOY OIL	(197.0)	(195.5)	(186.2)	(186.1)	57.3	61.2	53.3	46.6	18.9	19.4	17.7	19.0
SOY MEAL	(175.1)	(158.9)	(144.8)	(159.4)	42.6	35.5	29.7	47.2	33.4	33.2	28.8	30.6

	TOTAL OPEN INTEREST				(INDEX) COMMERCIAL INDEX TRADERS				(INDEX) % NET OF TOTAL OPEN INTEREST			
	27-Apr	20-Apr	13-Apr	6-Apr	27-Apr	20-Apr	13-Apr	6-Apr	27-Apr	20-Apr	13-Apr	6-Apr
	WHEAT											
Chicago	548,366	548,563	528,463	500,331	160.3	158.7	160.4	155.4	29.2%	28.9%	30.3%	31.1%
Kansas City	237,214	233,678	238,080	249,263	68.7	63.6	62.7	61.1	28.9%	27.2%	26.3%	24.5%
Minneapolis	-	-	-	-	-	-	-	-	-	-	-	-
All Wheat	785,580	782,241	766,543	749,594	229.0	222.3	223.1	216.4	29.2%	28.4%	29.1%	28.9%
CORN	2,399,229	2,547,704	2,448,675	2,364,959	413.8	416.8	413.4	414.4	17.2%	16.4%	16.9%	17.5%
OATS	-	-	-	-	-	-	-	-	-	-	-	-
SOYBEANS	1,167,102	1,249,501	1,208,328	1,193,107	183.1	173.1	171.4	172.1	15.7%	13.9%	14.2%	14.4%
SOY OIL	572,191	622,088	598,089	603,836	120.8	114.9	115.3	120.5	21.1%	18.5%	19.3%	20.0%
SOY MEAL	459,296	477,120	477,525	476,527	99.1	90.3	86.4	81.5	21.6%	18.9%	18.1%	17.1%

SOURCE: CFTC & FI

NET POSITION FUTURES AND OPTIONS OF SPECULATORS AND INDEX FUNDS IN COMBINED SRW, HRW, CORN, SOYBEANS, SOYMEAL AND SOYOIL



Source: CFTC and FI

○ Net Index — Net Speculator

Traditional Daily Estimate of Funds 4/27/21

	(Neg)-"Short"		Pos-"Long"		
Actual less Est.	(151.1)	(29.6)	(35.3)	2.0	(33.2)
	Corn	Bean	Chi. Wheat	Meal	Oil
Act.	521.6	250.6	29.7	91.9	91.3
21-Apr	(40.0)	(8.0)	(10.0)	(4.0)	(1.0)
22-Apr	(3.0)	(9.0)	4.0	1.0	(6.0)
23-Apr	55.0	18.0	5.0	3.0	11.0
26-Apr					
27-Apr					
FI Est. of Futures Only 4/27/21	533.6	251.6	28.7	91.9	95.3
FI Est. Futures & Options	498.7	210.1	34.6	80.5	98.2
Futures only record long "Traditional Funds"	547.7 1/26/2021	280.9 11/10/2020	86.5 8/7/2018	167.5 5/1/2018	160.2 11/1/2016
Futures only record short	(235.0) 6/9/2020	(118.3) 4/30/2019	(130.0) 4/25/2017	(49.5) 3/1/2016	(69.8) 9/18/2018
Futures and options record net long	557.6 1/12/2021	270.9 10/6/2020	64.8 8/7/2012	132.1 5/1/2018	159.2 1/1/2016
Futures and options record net short	(270.6) 4/26/2019	(132.0) 4/30/2019	(143.3) 4/25/2017	(64.1) 3/1/2016	(77.8) 9/18/2018

Managed Money Daily Estimate of Funds 4/27/21

	Corn	Bean	Chi. Wheat	Meal	Oil
Latest CFTC Fut. Only	362.2	168.9	7.2	52.9	88.9
Latest CFTC F&O	378.7	180.0	13.4	54.1	92.6
FI Est. Managed Fut. Only	374	170	6	53	93
FI Est. Managed Money F&O	391	181	12	54	97

Index Funds Latest Positions (as of last Tuesday)

Index Futures & Options	413.8	183.1	160.3	NA	120.8
Change From Previous Week	(2.9)	10.0	1.7	NA	5.8

Source: Reuters, CFTC & FI (FI est. are noted with latest date)

Disclaimer

TO CLIENTS/PROSPECTS OF FUTURES INTERNATIONAL, SEE RISK DISCLOSURE BELOW:

THIS COMMUNICATION IS CONVEYED AS A SOLICITATION FOR ENTERING INTO A DERIVATIVES TRANSACTION.

Any trading recommendations and market or other information to Customer by Futures International (FI), although based upon information obtained from sources believed by FI to be reliable may not be accurate and may be changed without notice to customer. FI makes no guarantee as to the accuracy or completeness of any of the information or recommendations furnished to Customer. Customer understands that FI, its managers, employees and/or affiliates may have a position in commodity futures, options or other derivatives which may not be consistent with the recommendations furnished by FI to Customer.

The risk of trading futures and options and other derivatives involves a substantial risk of loss and is not suitable for all persons. In purchasing an option, the risk is limited to the premium paid, and all commissions and fees involved with the trade. When an option is shorted or written, the writer of the option has unlimited risk with respect to the option written. The use of options strategies such as a straddles and strangles involve multiple option positions and may substantially increase the amount of commissions and fees paid to execute the strategy. Option prices do not necessarily move in tandem with cash or futures prices. Each person must consider whether a particular trade, combination of trades or strategy is suitable for that person's financial means and objectives.

This material may include discussions of seasonal patterns, however, futures prices have already factored in the seasonal aspects of supply and demand, and seasonal patterns are no indication of future market trends. Finally, past performance is not indicative of future results.

This communication may contain links to third party websites which are not under the control of FI and FI is not responsible for their content. Products and services are offered only in jurisdictions where solicitation and sale are lawful, and in accordance with applicable laws and regulations in each such jurisdiction.