

CFTC COMMITMENT OF TRADERS REPORT

As of 4/20/2021

TRADITIONAL FUNDS net position changes

Wed to Tue, in 000 contracts

	Corn	Bean	Meal	Oil	Chi. Wheat	KC Wheat	Min Wheat
Futures Only	(20.5)	19.1	7.2	1.4	15.5	7.1	3.9
Futures & Options Combined	(21.9)	32.6	8.8	5.3	16.6	8.5	3.8

TRADITIONAL COMMERCIAL net position changes

	Corn	Bean	Meal	Oil	Chi. Wheat	KC Wheat	Min Wheat
Futures Only	6.2	(23.3)	(11.2)	(3.1)	(15.1)	(7.9)	(5.9)
Futures & Options Combined	7.4	(38.8)	(13.2)	(7.0)	(16.3)	(9.2)	(6.0)

MANAGED MONEY net position changes

	Corn	Bean	Meal	Oil	Chi. Wheat	KC Wheat	Min Wheat
Futures Only	(17.1)	29.8	4.3	8.0	15.5	7.8	2.4
Futures & Options Combined	(18.0)	30.3	4.2	8.8	14.8	7.7	2.4

SWAP DEALERS net position changes

	Corn	Bean	Meal	Oil	Chi. Wheat	KC Wheat	Min Wheat
Futures Only	2.7	(3.5)	0.7	0.2	(3.7)	(0.3)	(0.6)
Futures & Options Combined	0.5	(2.3)	0.3	0.2	(6.0)	(0.5)	(0.6)

PRODUCERS/END USERS net position changes

	Corn	Bean	Meal	Oil	Chi. Wheat	KC Wheat	Min Wheat
Futures Only	3.5	(19.8)	(11.8)	(3.3)	(11.4)	(7.7)	(5.3)
Futures & Options Combined	7.0	(36.5)	(13.6)	(7.2)	(10.4)	(8.7)	(5.5)

INDEX net position changes

	Corn	Bean	Meal	Oil	Chi. Wheat	KC Wheat	Min Wheat
Futures & Options Combined	3.4	1.6	3.9	(0.3)	(1.7)	0.9	NA

SUPPLEMENTAL NON-COMMERCIAL net position changes

	Corn	Bean	Meal	Oil	Chi. Wheat	KC Wheat	Min Wheat
Futures & Options Combined	(20.9)	31.0	5.8	7.9	15.1	7.2	NA

OPEN INTEREST net position changes

Wed to Tue, in 000 contracts

	Corn	Bean	Meal	Oil	Chi. Wheat	KC Wheat	Min Wheat
Futures Only	17.3	15.9	(0.8)	12.0	4.8	(6.1)	(2.5)
Futures & Options Combined	99.0	41.2	(0.4)	24.0	20.1	(4.4)	(2.0)

Source: CFTC and FI

Wed to Tue, in 000 contracts

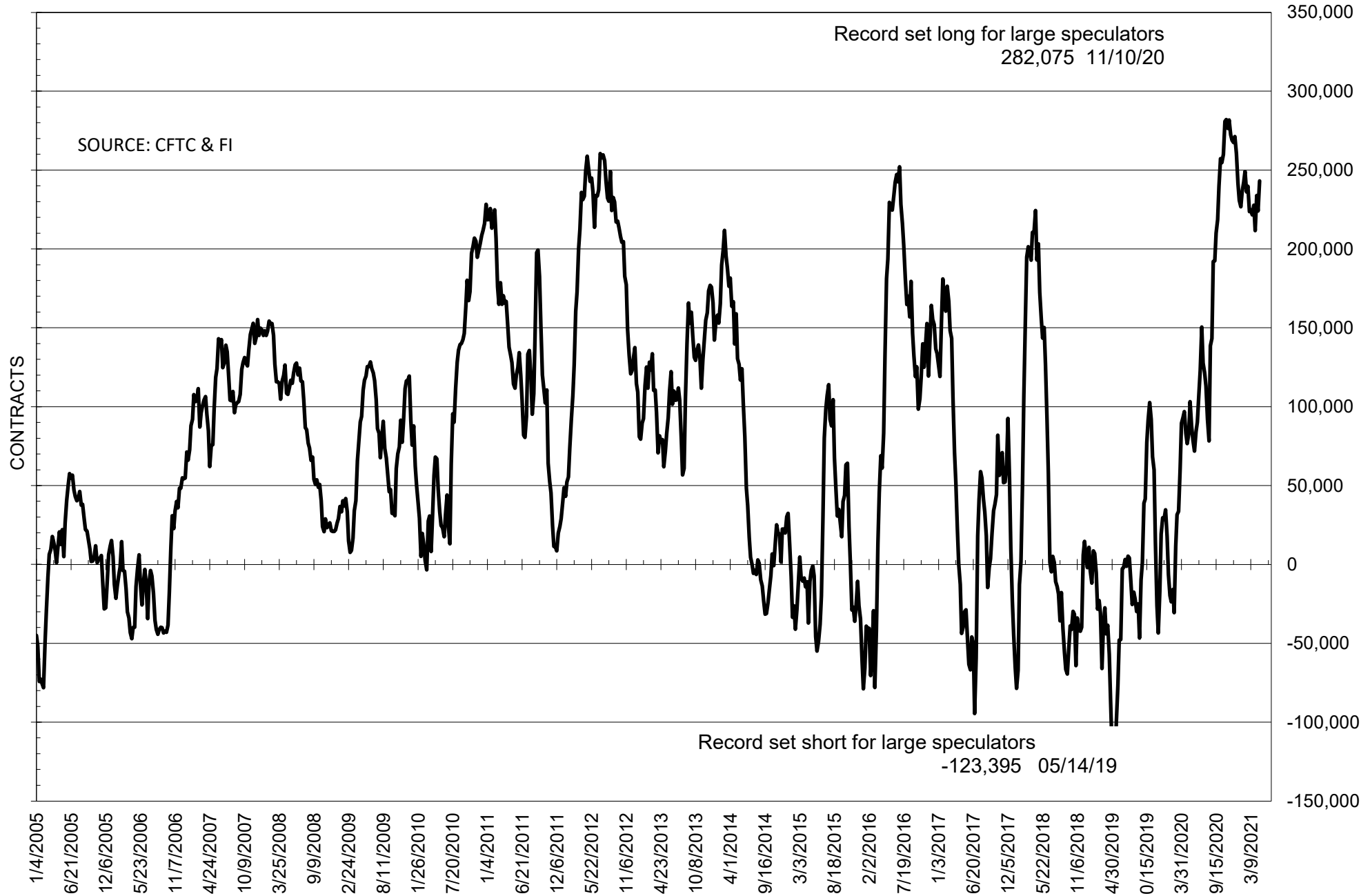
**COMMITMENT OF TRADERS
FUTURES ONLY NET POSITIONS
AS OF 04/20/2021
(IN THOUSAND CONTRACTS)**

	COMMERCIAL				(FUND) NON COMMERCIAL				(SPEC) NON-REPORTABLE			
	20-Apr	13-Apr	6-Apr	30-Mar	20-Apr	13-Apr	6-Apr	30-Mar	20-Apr	13-Apr	6-Apr	30-Mar
	WHEAT											
Chicago	-9.1	6.0	0.8	8.4	21.0	5.5	11.2	3.1	-11.9	-11.5	-12.0	-11.5
Kansas City	-23.1	-15.2	-11.6	-17.3	22.2	15.1	12.6	19.3	0.9	0.1	-1.0	-1.9
Minneapolis	-22.5	-16.6	-11.1	-13.2	15.0	11.1	6.0	11.5	7.5	5.5	5.1	1.7
All Wheat	-54.7	-25.7	-21.8	-22.1	58.2	31.7	29.7	33.8	-3.6	-6.0	-7.9	-11.7
CORN	-488.5	-494.7	-492.0	-496.0	522.7	543.3	536.2	535.3	-34.2	-48.6	-44.2	-39.4
OATS	-2.4	-2.2	-2.1	-2.0	1.3	1.2	1.2	1.2	1.1	1.0	0.9	0.8
SOYBEANS	-239.4	-216.0	-224.0	-196.0	243.2	224.0	233.8	211.7	-3.8	-8.0	-9.8	-15.7
SOY OIL	-115.2	-112.1	-112.9	-114.5	96.5	95.1	94.7	100.4	18.7	17.0	18.2	14.1
SOY MEAL	-110.9	-99.7	-115.2	-113.3	82.9	75.7	89.5	89.3	28.0	24.1	25.7	23.9

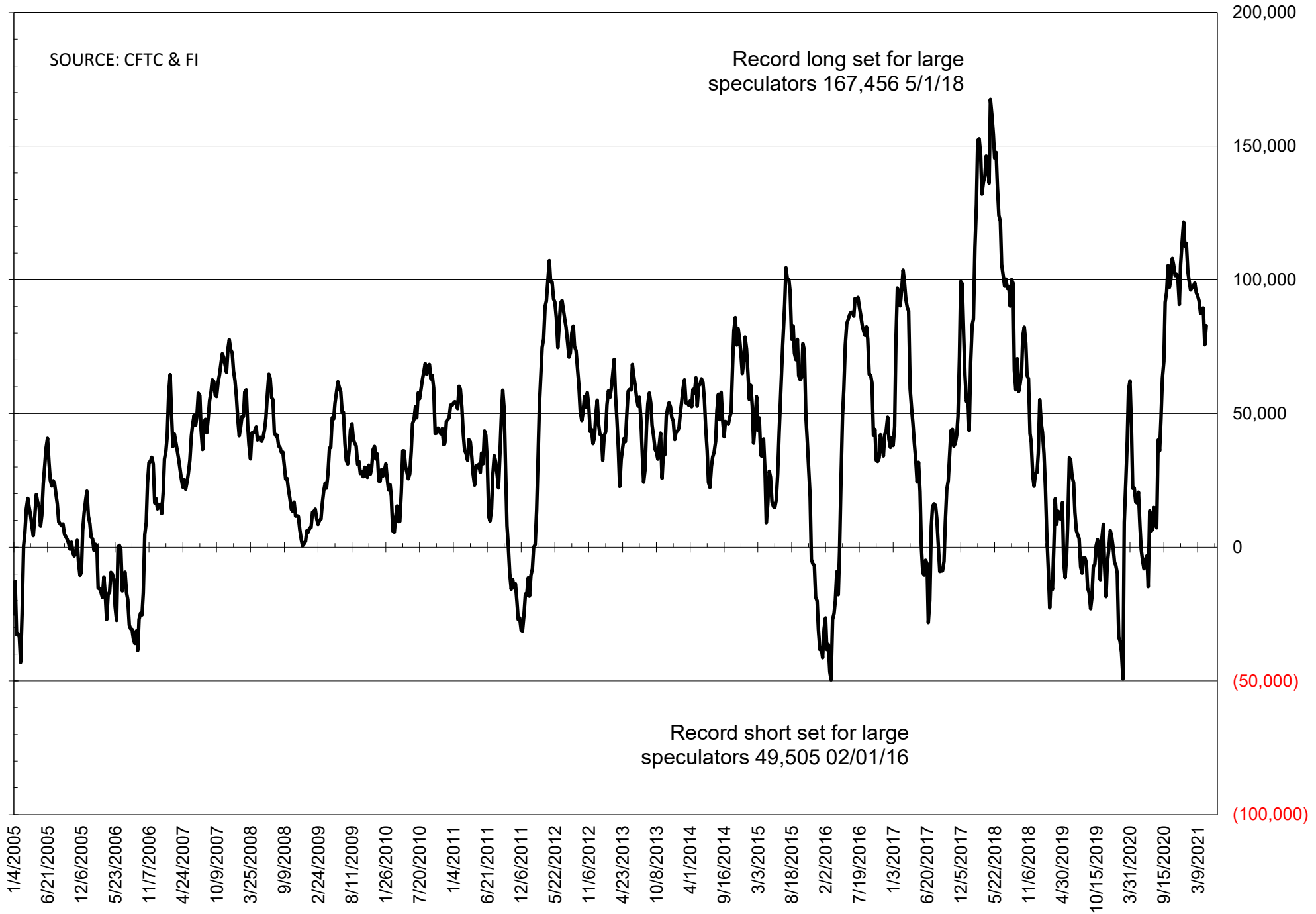
	TOTAL OPEN INTEREST				NEARBY FUTURES PRICE					20-Apr-21 LAST REPORTED % HELD BY TRADERS			
	20-Apr	13-Apr	6-Apr	30-Mar	K Latest	K 20-Apr	K 13-Apr	K 6-Apr	K 30-Mar	LARGE FUND		SMALL	
										LONG	SHORT	LONG	SHORT
WHEAT													
Chicago	441233	436431	412959	422256	710.25	659.75	629.75	615.50	601.75	0%	25%	0%	10%
Kansas City	215075	221216	232449	225545	673.25	620.75	584.75	555.50	558.50	0%	19%	0%	10%
Minneapolis	75866	78379	77035	80752	718.50	669.00	649.00	555.50	601.75	0%	5%	0%	15%
CORN	1810407	1793078	1763485	1740902	655.50	606.50	580.00	554.25	539.25	0%	5%	0%	11%
OATS	4429	4201	4329	4299	399.00	385.25	375.50	374.00	368.50	0%	3%	0%	16%
SOYBEANS	901330	885436	870313	863609	1539.75	1472.00	1389.50	1418.75	1366.75	32%	5%	8%	8%
SOY OIL	514255	502302	497159	493057	62.71	58.32	53.03	53.92	50.46	0%	8%	0%	5%
SOY MEAL	414656	415455	414875	409312	422.40	410.40	395.00	406.40	398.25	0%	4%	0%	6%

SOURCE: CFTC & FI

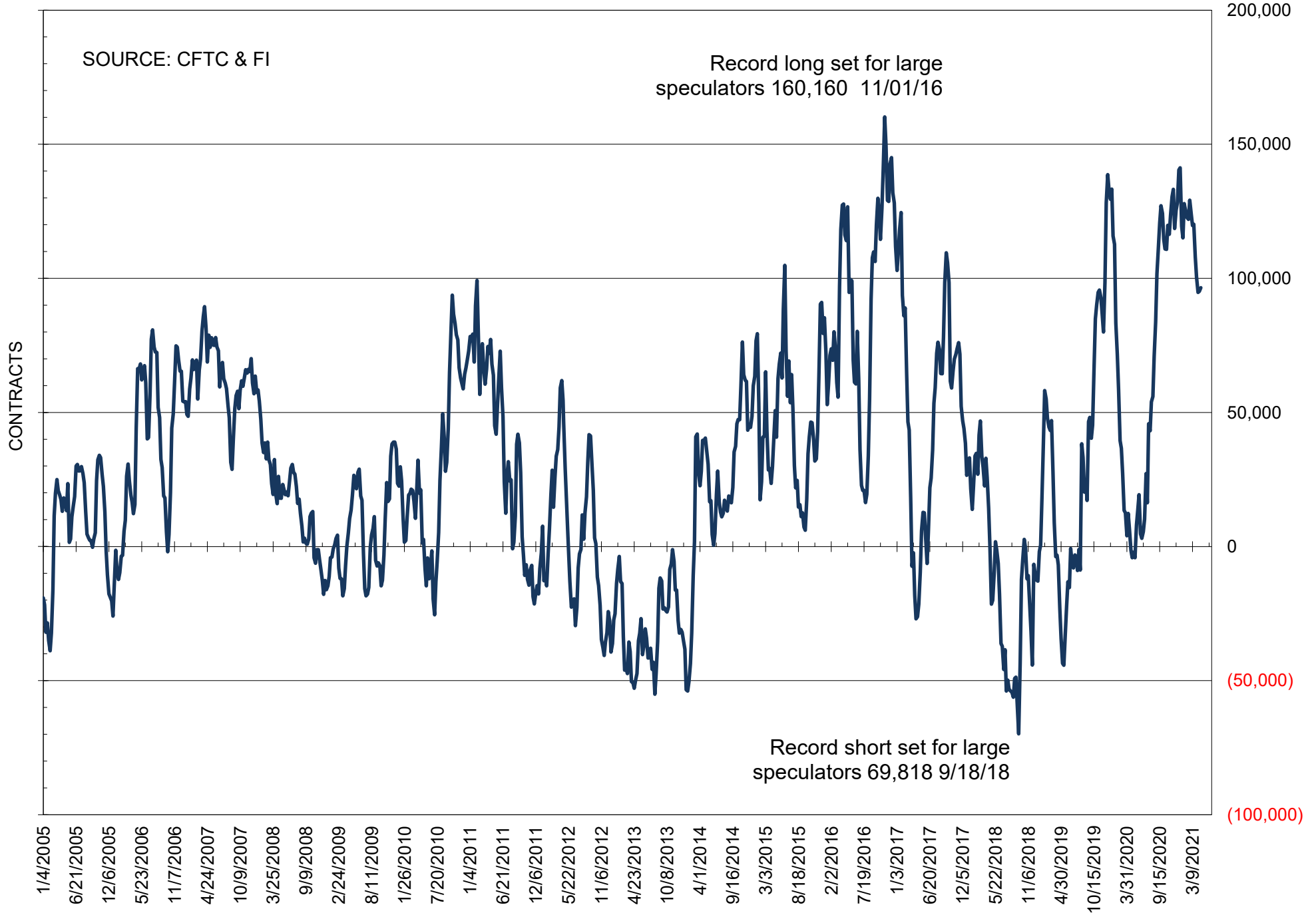
NET POSITION OF FUTURES ONLY LARGE SPECS IN SOYBEANS



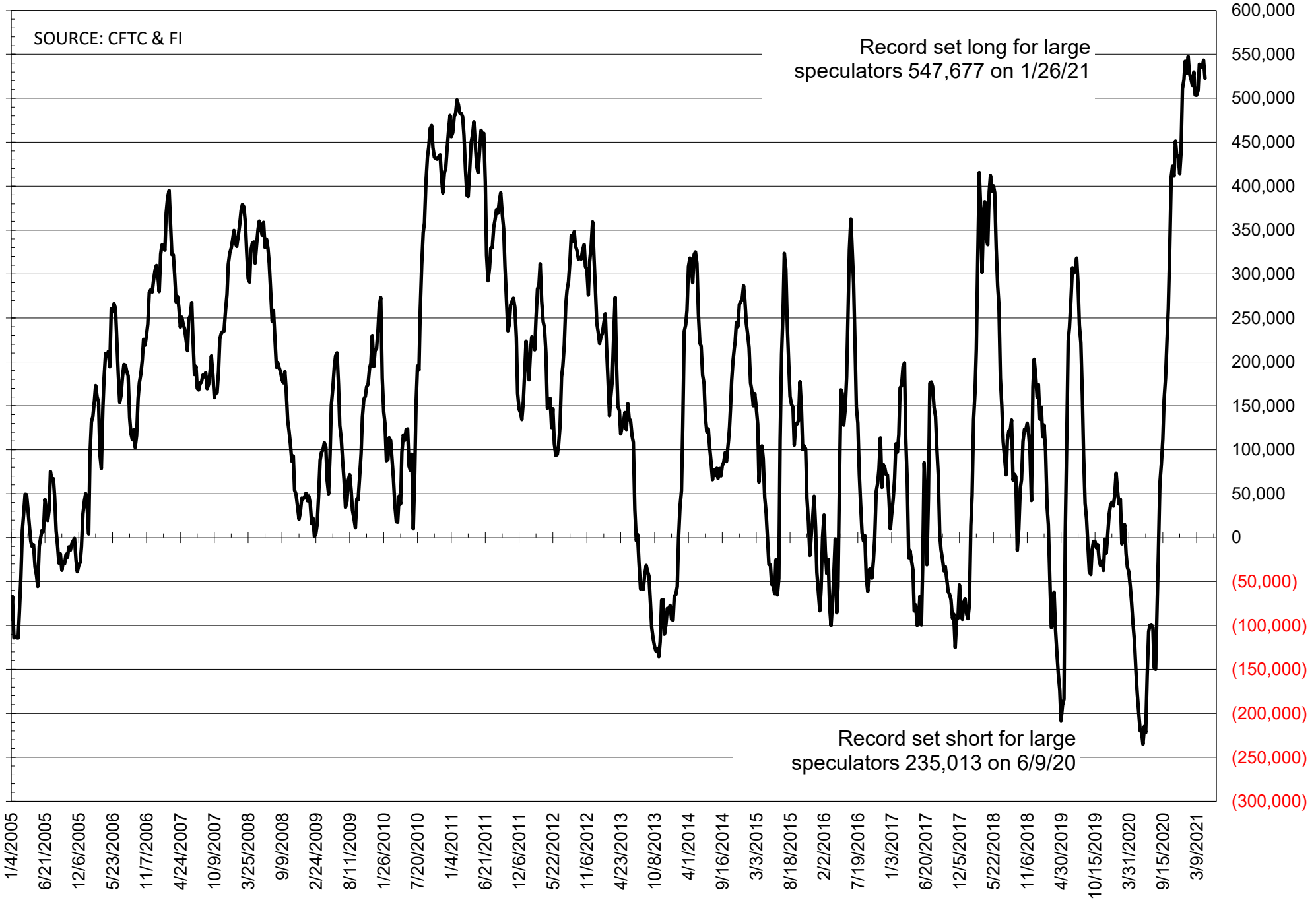
NET POSITION OF FUTURES ONLY LARGE SPECS IN SOYMEAL



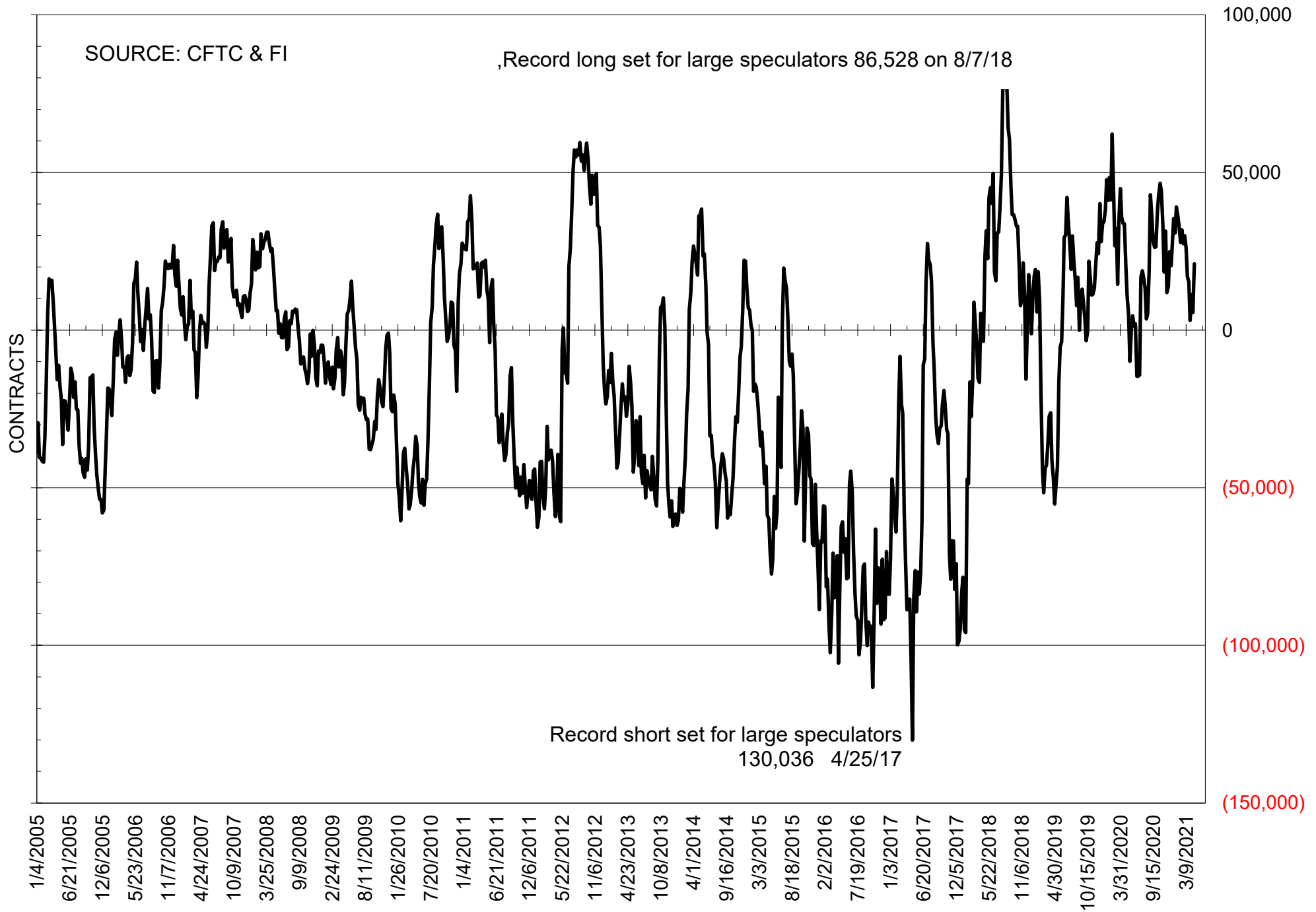
NET POSITION OF FUTURES ONLY LARGE SPECS IN SOYOIL



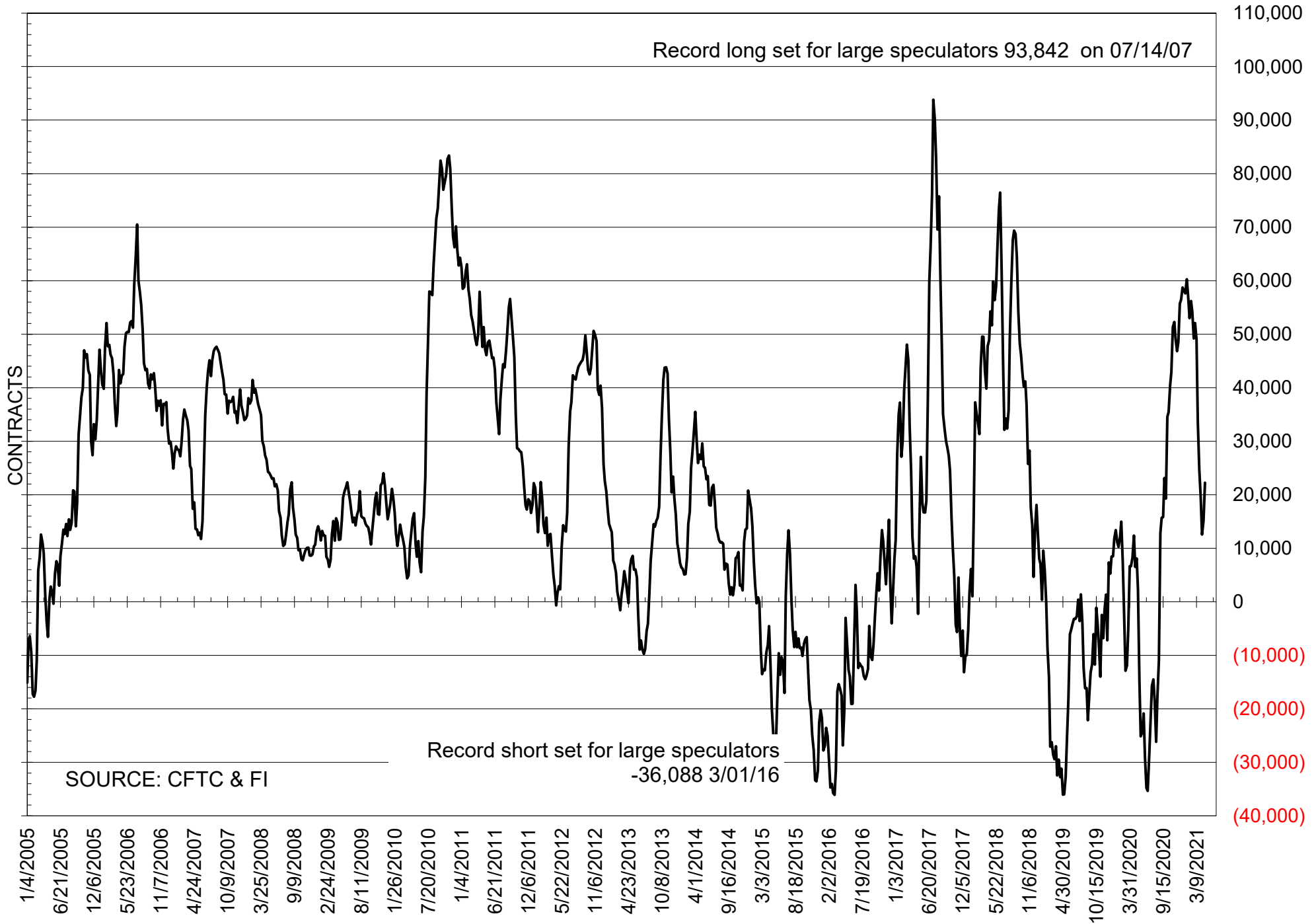
NET POSITION OF LARGE SPECULATORS IN CORN



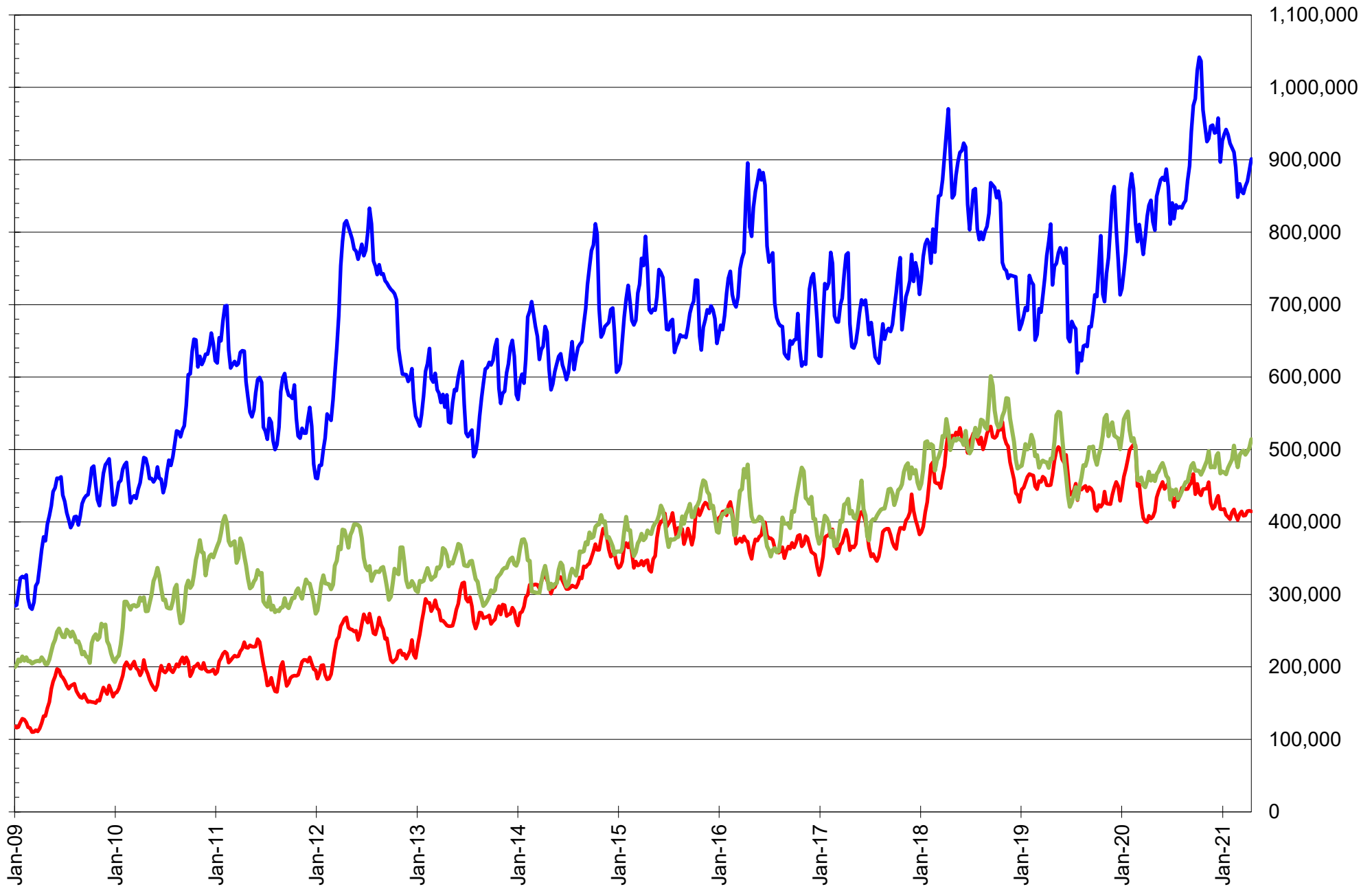
NET POSITION OF FUTURES ONLY LARGE SPECS IN CHICAGO WHEAT



NET POSITION OF LARGE SPECULATORS IN KANSAS CITY WHEAT



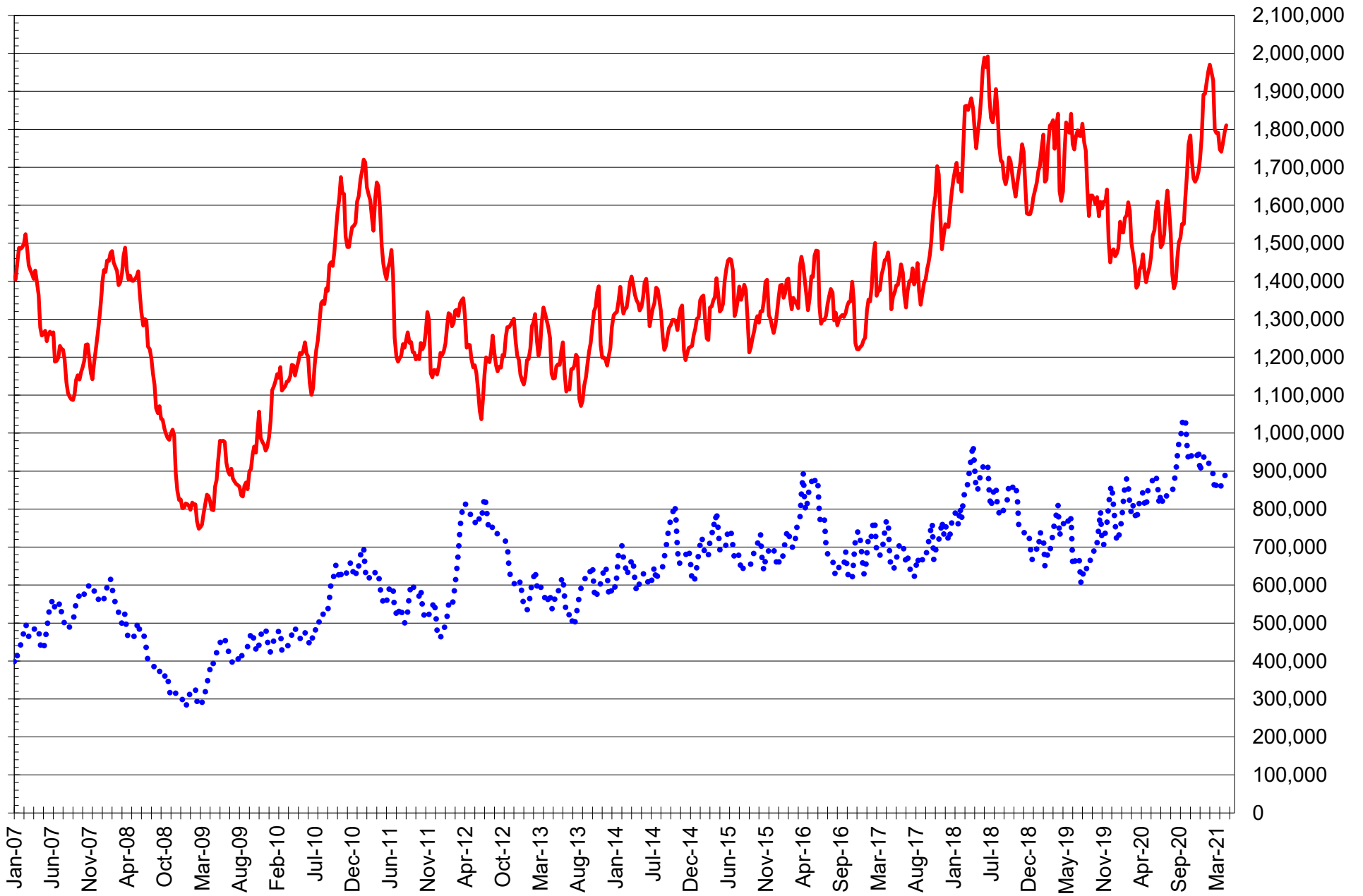
TOTAL OPEN INTEREST IN SOYBEANS, MEAL AND OIL, FUTURES ONLY



SOURCE: CFTC & FI

— SOYBEANS — SOYBEAN MEAL — SOYBEAN OIL

TOTAL OPEN INTEREST IN CORN AND SOYBEANS, FUTURES ONLY



SOURCE: CFTC & FI

— CORN

•••• SOYBEANS

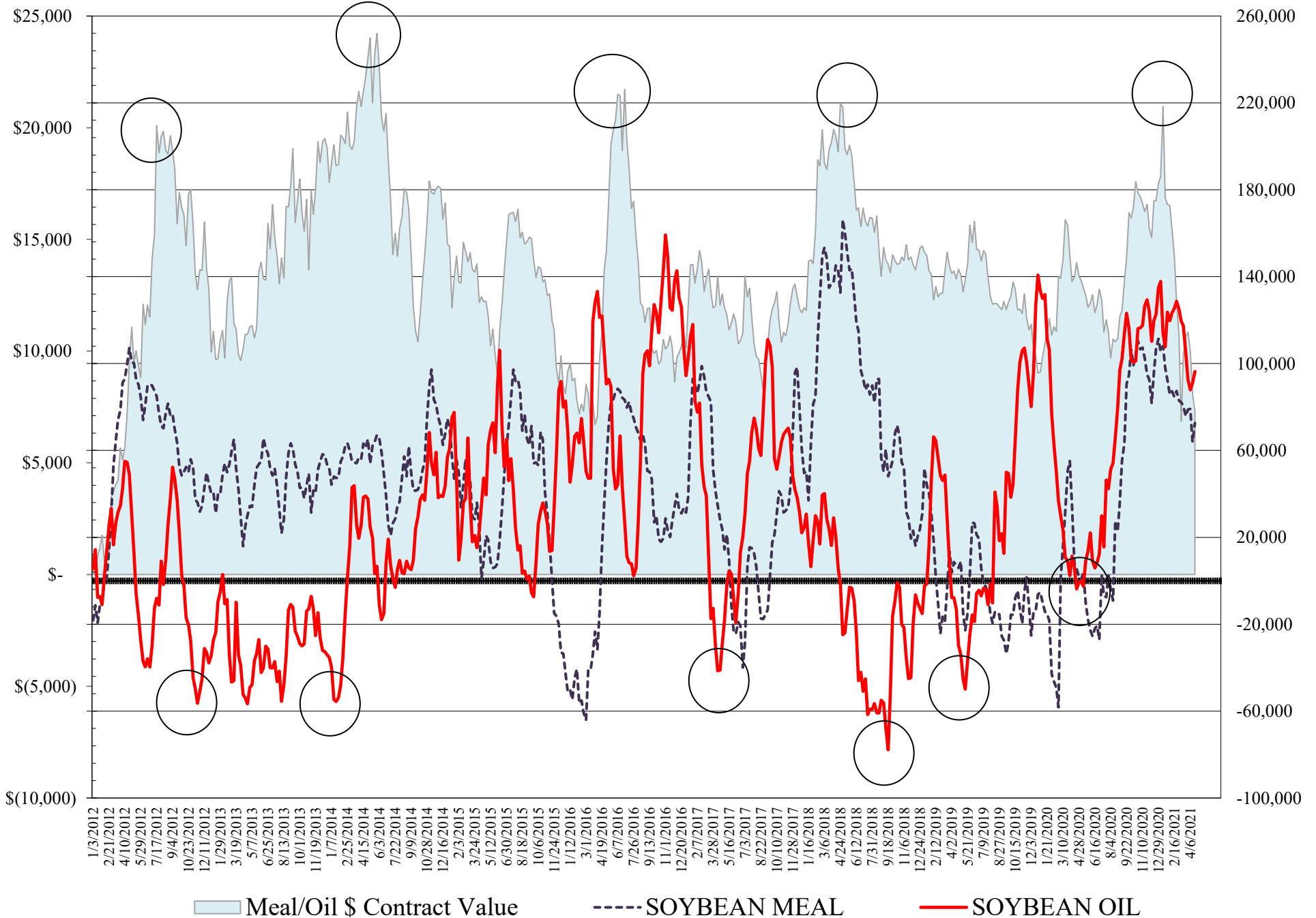
**COMMITMENT OF TRADERS
FUTURES & OPTIONS NET POSITIONS
AS OF 04/20/2021
(IN THOUSAND CONTRACTS)**

	COMMERCIAL				(FUND) NON COMMERCIAL				(SPEC) NON-REPORTABLE			
	20-Apr	13-Apr	6-Apr	30-Mar	20-Apr	13-Apr	6-Apr	30-Mar	20-Apr	13-Apr	6-Apr	30-Mar
WHEAT												
Chicago	-13.5	2.8	-0.8	6.5	26.1	9.4	13.8	5.8	-12.5	-12.2	-13.0	-12.3
Kansas City	-20.6	-11.4	-7.1	-12.9	19.7	11.2	8.3	15.3	0.9	0.1	-1.2	-2.4
Minneapolis	-21.8	-15.8	-10.0	-12.1	13.5	9.7	4.4	10.1	8.3	6.1	5.5	2.0
All Wheat	-55.9	-24.3	-17.9	-18.5	59.3	30.3	26.5	31.2	-3.3	-6.0	-8.6	-12.6
CORN	-487.6	-495.0	-478.6	-477.8	504.1	526.1	509.4	512.8	-16.6	-31.1	-30.8	-35.0
OATS	-2.4	-2.2	-2.1	-2.0	1.3	1.1	1.2	1.2	1.1	1.0	0.9	0.8
SOYBEANS	-207.9	-169.1	-182.8	-145.3	204.9	172.3	186.0	159.4	3.0	-3.2	-3.2	-14.2
SOY OIL	-115.7	-108.7	-106.8	-107.6	96.3	91.0	87.8	92.7	19.4	17.7	19.0	14.9
SOY MEAL	-105.8	-92.6	-109.8	-107.4	72.6	63.8	79.1	78.9	33.2	28.8	30.6	28.5

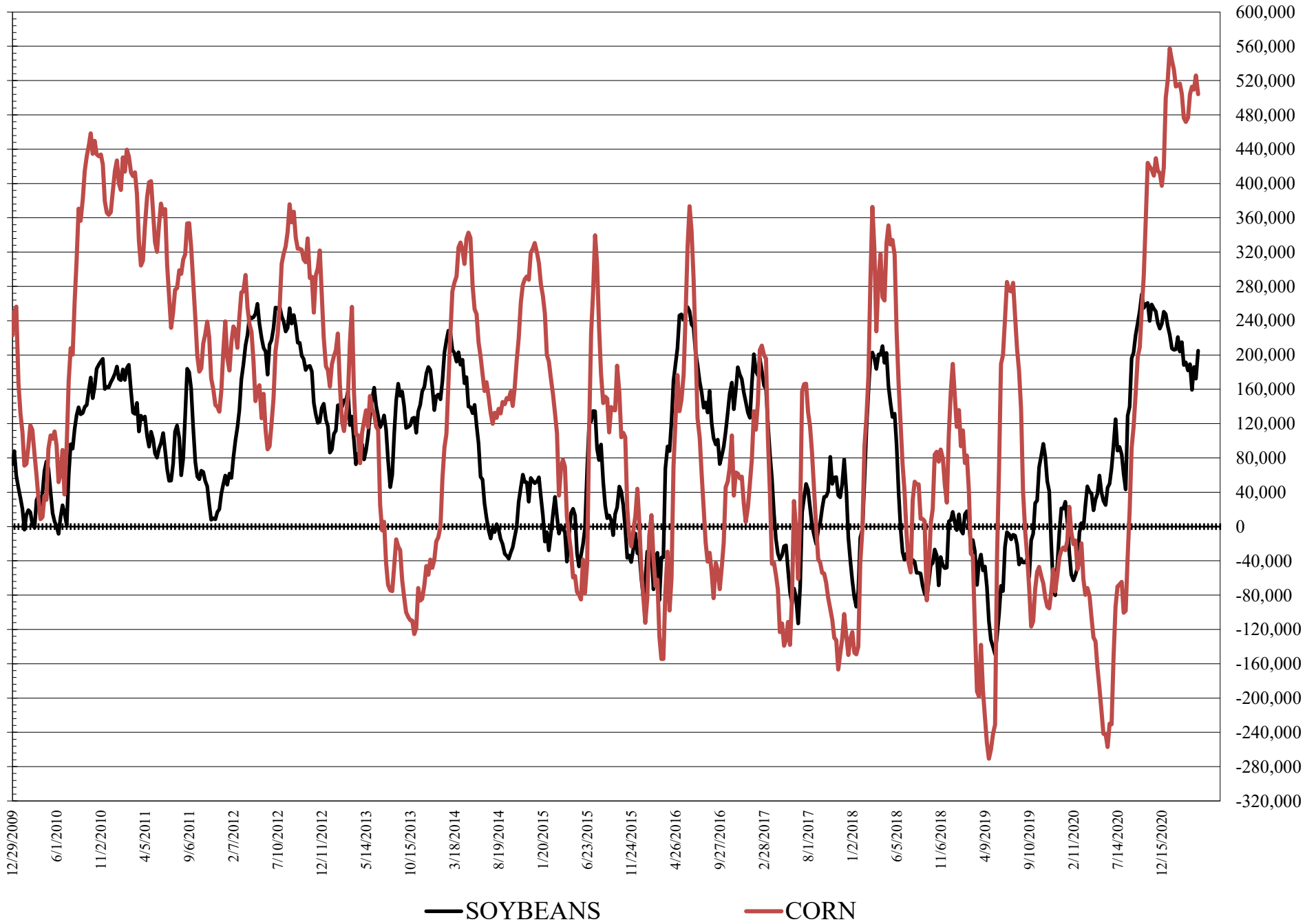
	TOTAL OPEN INTEREST				COMMERCIALS		% HELD BY TRADERS LARGE (FUNDS)		SMALL (NON-REP)	
	20-Apr	13-Apr	6-Apr	30-Mar	LONG	SHORT	LONG	SHORT	LONG	SHORT
WHEAT										
Chicago	548,563	528,463	500,331	511,903	33%	36%	23%	18%	6%	8%
Kansas City	233,678	238,080	249,263	242,246	42%	50%	26%	17%	10%	10%
Minneapolis	81,610	83,605	81,757	85,271	45%	72%	21%	5%	24%	14%
CORN	2,547,704	2,448,675	2,364,959	2,320,111	40%	60%	23%	3%	9%	10%
OATS	4,488	4,267	4,400	4,377						
SOYBEANS	1,249,501	1,208,328	1,193,107	1,175,658	41%	57%	20%	4%	7%	7%
SOY OIL	622,088	598,089	603,836	589,479	45%	63%	22%	6%	8%	5%
SOY MEAL	477,120	477,525	476,527	470,594	46%	68%	19%	4%	13%	6%

SOURCE: CFTC & FI

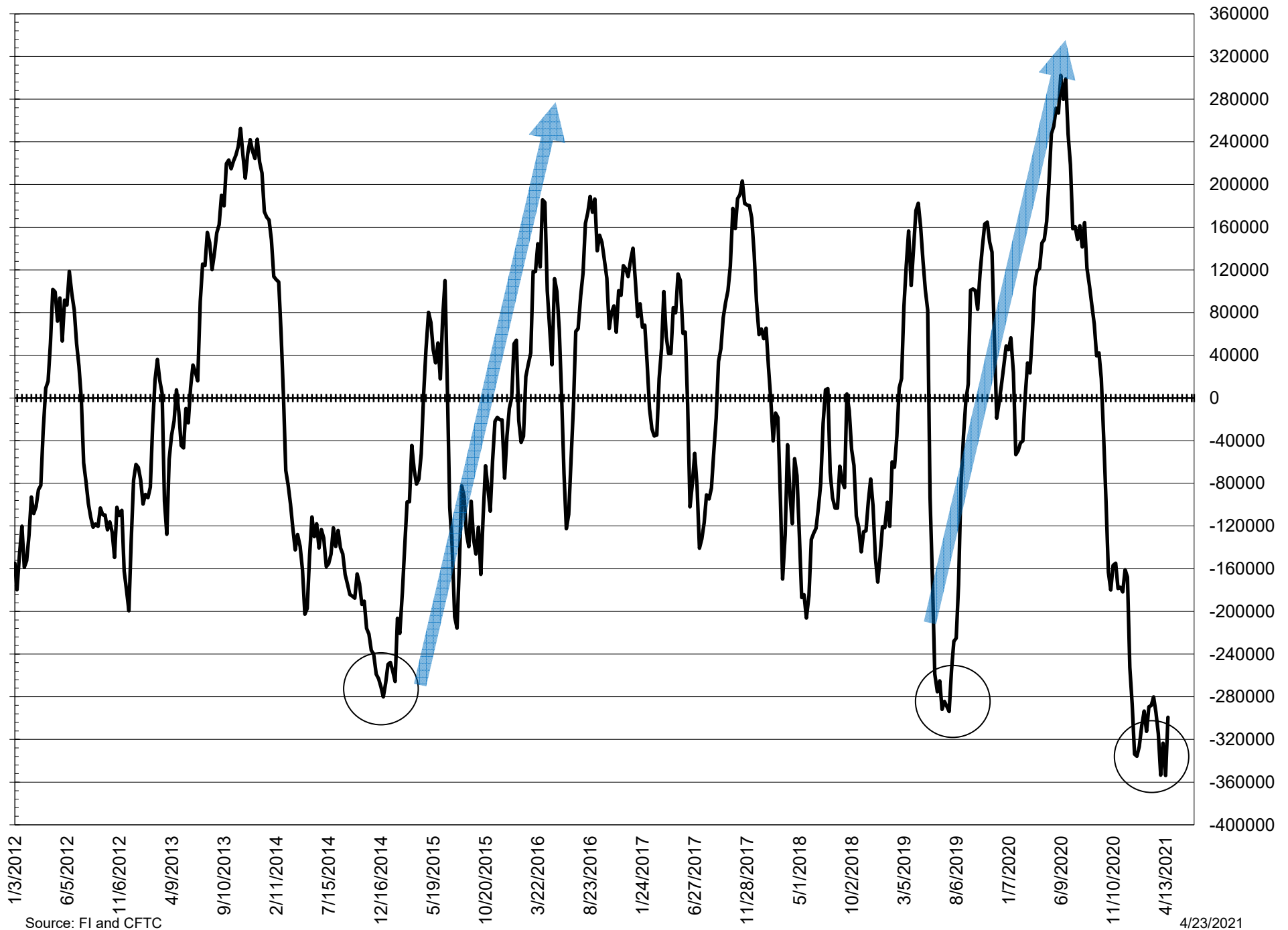
NET POSITION FUTURES AND OPTIONS OF LARGE SPECULATORS IN SOYBEAN MEAL AND SOYBEAN OIL



NET POSITION FUTURES AND OPTIONS OF LARGE SPECULATORS IN SOYBEANS AND CORN



NET POSITION FUTURES AND OPTIONS SPREAD OF LARGE SPECULATORS IN SOYBEANS MINUS CORN



Source: FI and CFTC

4/23/2021

**DISAGGREGATED COMMITMENT OF TRADERS
FUTURES ONLY NET POSITIONS
AS OF 04/20/2021
(IN THOUSAND CONTRACTS)**

	PRODUCER / MERCHANT / PROCESSOR / USER				(INDEX/ETF) SWAP DEALERS				(CTA/CPO/OTHER UNREGISTERED) MANAGED MONEY			
	20-Apr	13-Apr	6-Apr	30-Mar	20-Apr	13-Apr	6-Apr	30-Mar	20-Apr	13-Apr	6-Apr	30-Mar
	WHEAT											
Chicago	(99.5)	(88.1)	(89.3)	(88.6)	90.4	94.1	90.2	97.1	(3.7)	(19.2)	(12.0)	(19.1)
Kansas City	(68.2)	(60.5)	(53.2)	(59.3)	45.1	45.4	41.6	42.0	18.6	10.8	13.9	21.2
Minneapolis	(26.1)	(20.8)	(15.5)	(18.5)	3.6	4.2	4.5	5.3	12.1	9.6	5.5	10.4
All Wheat	(193.8)	(169.4)	(158.0)	(166.5)	139.1	143.7	136.2	144.3	27.0	1.3	7.4	12.5
CORN	(754.4)	(757.9)	(747.6)	(761.1)	265.9	263.2	255.7	265.1	380.1	397.2	379.6	387.7
OATS	(2.5)	(2.3)	(2.2)	(2.2)	0.1	0.1	0.1	0.1	0.8	0.6	0.7	0.6
SOYBEANS	(304.7)	(284.9)	(295.9)	(285.2)	65.3	68.8	71.9	89.2	160.1	130.3	141.1	133.8
SOY OIL	(216.5)	(213.2)	(211.2)	(210.1)	101.3	101.2	98.3	95.6	87.2	79.2	74.8	79.4
SOY MEAL	(186.4)	(174.6)	(185.4)	(183.6)	75.5	74.8	70.3	70.3	47.2	42.8	60.4	57.4

Managed % of OI				
Chicago W	-1%	-4%	-3%	-5%
Corn	21%	22%	22%	22%

	TOTAL OPEN INTEREST				OTHER REPORTABLE				NON REPORTABLE			
	20-Apr	13-Apr	6-Apr	30-Mar	20-Apr	13-Apr	6-Apr	30-Mar	20-Apr	13-Apr	6-Apr	30-Mar
WHEAT												
Chicago	441,233	436,431	412,959	422,256	24.7	24.7	23.2	22.2	(11.9)	(11.5)	(12.0)	(11.5)
Kansas City	215,075	221,216	232,449	225,545	3.6	4.3	(1.4)	(1.9)	0.9	0.1	(1.0)	(1.9)
Minneapolis	75,866	78,379	77,035	80,752	2.9	1.4	0.5	1.1	7.5	5.5	5.1	1.7
All Wheat	732,174	736,026	722,443	728,553	31.3	30.4	22.3	21.3	(3.6)	(6.0)	(7.9)	(11.7)
CORN	1,810,407	1,793,078	1,763,485	1,740,902	142.7	146.1	156.5	147.6	(34.2)	(48.6)	(44.2)	(39.4)
OATS	4,429	4,201	4,329	4,299	0.5	0.6	0.6	0.6	1.1	1.0	0.9	0.8
SOYBEANS	901,330	885,436	870,313	863,609	83.1	93.7	92.7	77.9	(3.8)	(8.0)	(9.8)	(15.7)
SOY OIL	514,255	502,302	497,159	493,057	9.2	15.9	19.9	21.0	18.7	17.0	18.2	14.1
SOY MEAL	414,656	415,455	414,875	409,312	35.7	32.8	29.0	31.9	28.0	24.1	25.7	23.9

SOURCE: CFTC & FI

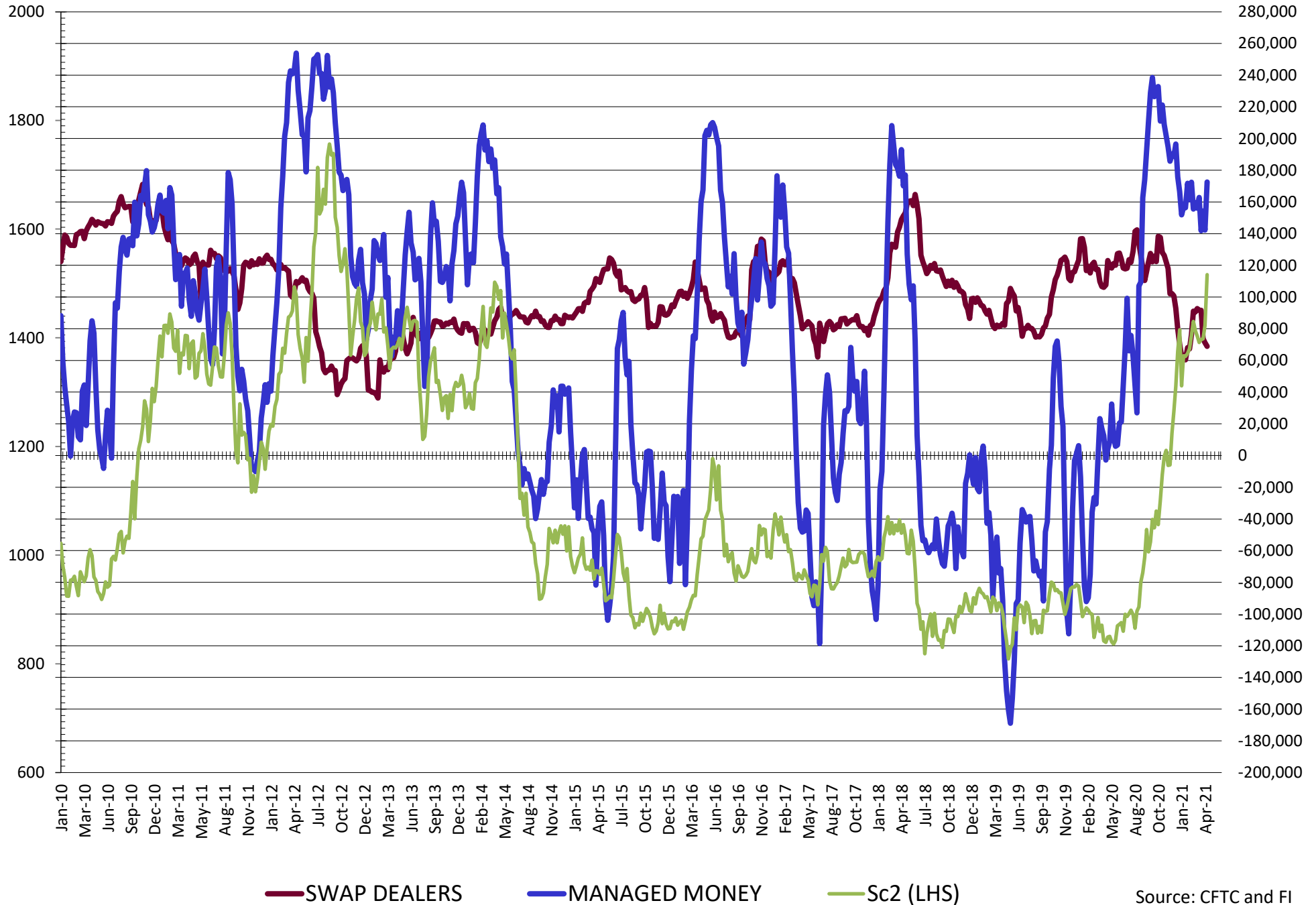
**DISAGGREGATED COMMITMENT OF TRADERS
FUTURES & OPTIONS NET POSITIONS
AS OF 04/20/2021
(IN THOUSAND CONTRACTS)**

	PRODUCER / MERCHANT / PROCESSOR / USER				(INDEX/ETF) SWAP DEALERS				(CTA/CPO/OTHER UNREGISTERED) MANAGED MONEY			
	20-Apr	13-Apr	6-Apr	30-Mar	20-Apr	13-Apr	6-Apr	30-Mar	20-Apr	13-Apr	6-Apr	30-Mar
	WHEAT											
Chicago	(99.9)	(89.5)	(91.1)	(92.0)	86.4	92.3	90.3	98.5	1.6	(13.2)	(7.6)	(14.7)
Kansas City	(65.3)	(56.6)	(48.8)	(55.1)	44.8	45.3	41.8	42.1	18.7	11.0	14.5	21.7
Minneapolis	(25.4)	(20.0)	(14.4)	(17.4)	3.7	4.2	4.4	5.3	12.1	9.7	5.5	10.4
All Wheat	(190.7)	(166.1)	(154.4)	(164.4)	134.8	141.8	136.5	145.9	32.4	7.5	12.4	17.4
CORN	(728.6)	(735.6)	(713.9)	(726.6)	241.1	240.6	235.3	248.8	384.0	402.0	386.6	395.6
OATS	(2.6)	(2.3)	(2.2)	(2.1)	0.1	0.1	0.1	0.1	0.8	0.6	0.7	0.6
SOYBEANS	(276.8)	(240.2)	(256.5)	(236.9)	68.9	71.1	73.7	91.6	172.5	142.3	154.3	141.9
SOY OIL	(218.7)	(211.5)	(207.2)	(205.3)	103.0	102.8	100.4	97.7	90.0	81.2	77.0	80.8
SOY MEAL	(181.0)	(167.5)	(180.0)	(178.0)	75.2	74.8	70.2	70.6	48.0	43.8	61.3	58.2

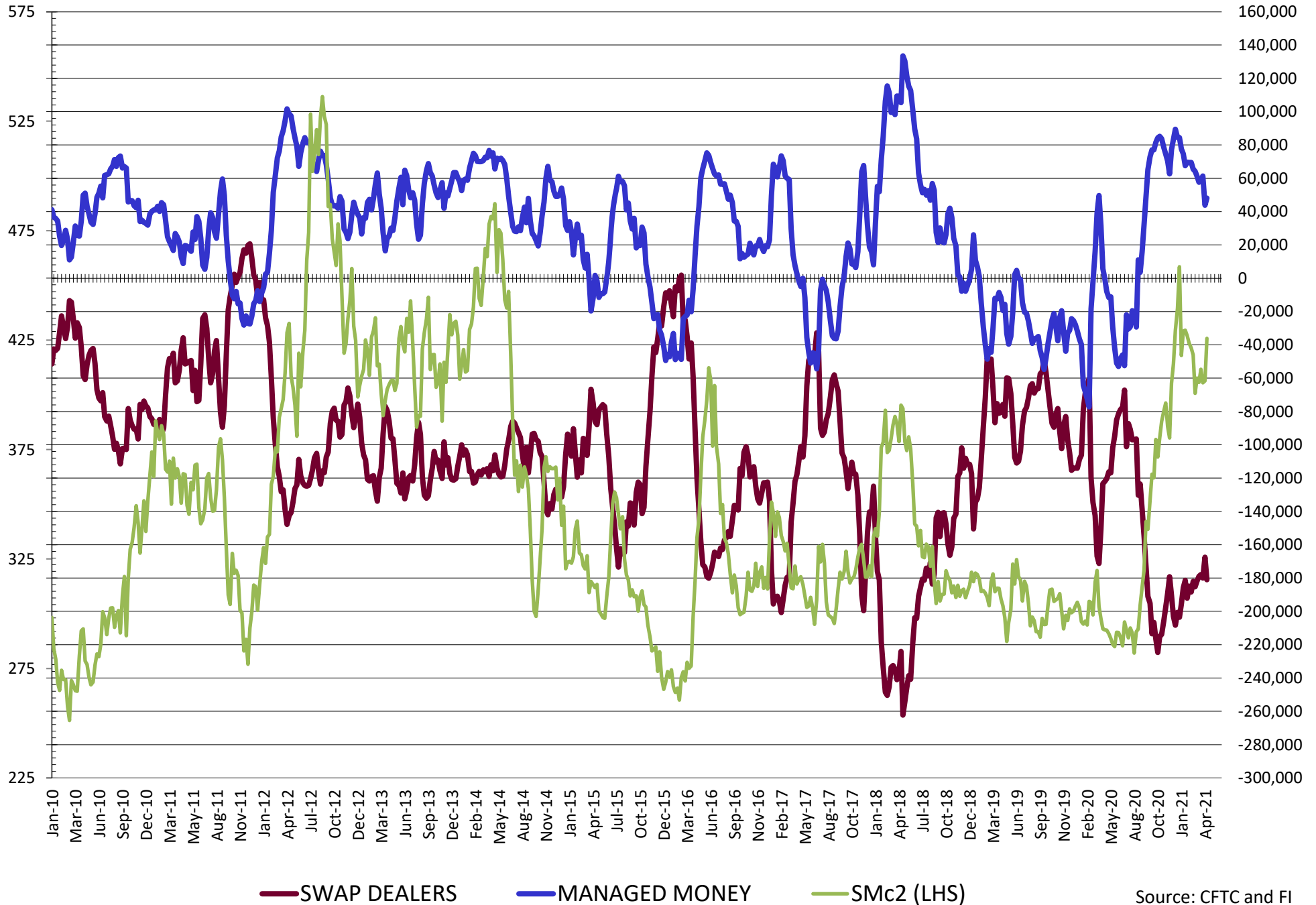
	TOTAL OPEN INTEREST				OTHER REPORTABLE				NON REPORTABLE			
	20-Apr	13-Apr	6-Apr	30-Mar	20-Apr	13-Apr	6-Apr	30-Mar	20-Apr	13-Apr	6-Apr	30-Mar
	WHEAT											
Chicago	548,563	528,463	500,331	511,903	24.5	22.7	21.4	20.5	(12.5)	(12.2)	(13.0)	(12.3)
Kansas City	233,678	238,080	249,263	242,246	1.0	0.2	(6.2)	(6.4)	0.9	0.1	(1.2)	(2.4)
Minneapolis	81,610	83,605	81,757	85,271	1.3	(0.0)	(1.0)	(0.3)	8.3	6.1	5.5	2.0
All Wheat	863,851	850,148	831,351	839,420	26.8	22.8	14.1	13.8	(3.3)	(6.0)	(8.6)	(12.6)
CORN	2,547,704	2,448,675	2,364,959	2,320,111	120.2	124.1	122.8	117.2	(16.6)	(31.1)	(31.1)	(31.1)
OATS	4,488	4,267	4,400	4,377	0.5	0.5	0.5	0.6	1.1	1.0	0.9	0.8
SOYBEANS	1,249,501	1,208,328	1,193,107	1,175,658	32.4	30.1	31.7	17.5	3.0	(3.2)	(3.2)	(14.2)
SOY OIL	622,088	598,089	603,836	589,479	6.3	9.9	10.8	11.9	19.4	17.7	19.0	14.9
SOY MEAL	477,120	477,525	476,527	470,594	24.6	20.0	17.8	20.6	33.2	28.8	30.6	28.5

SOURCE: CFTC & FI

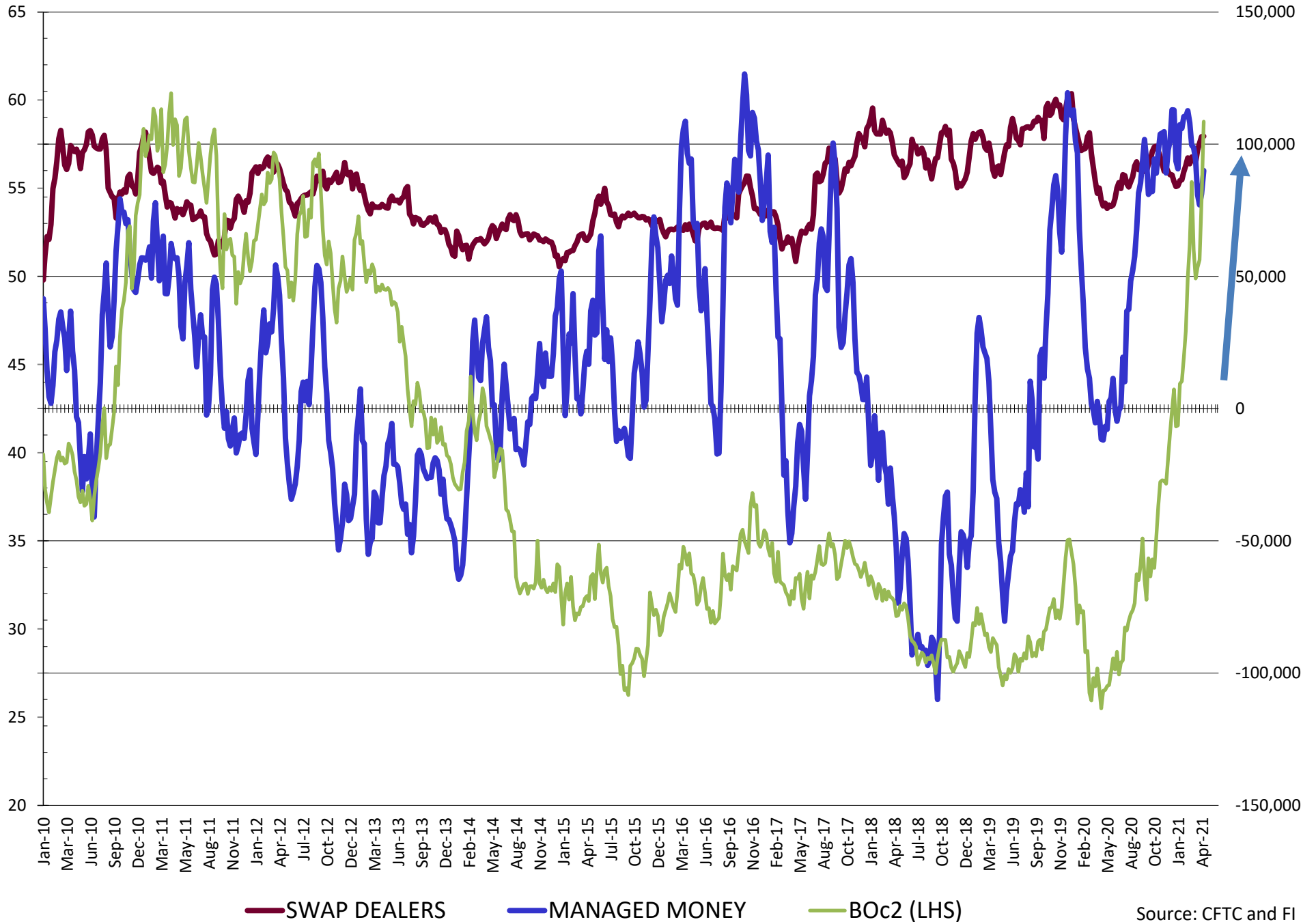
NET POSITION FUTURES AND OPTIONS OF SWAP AND MANAGED FUNDS IN SOYBEANS



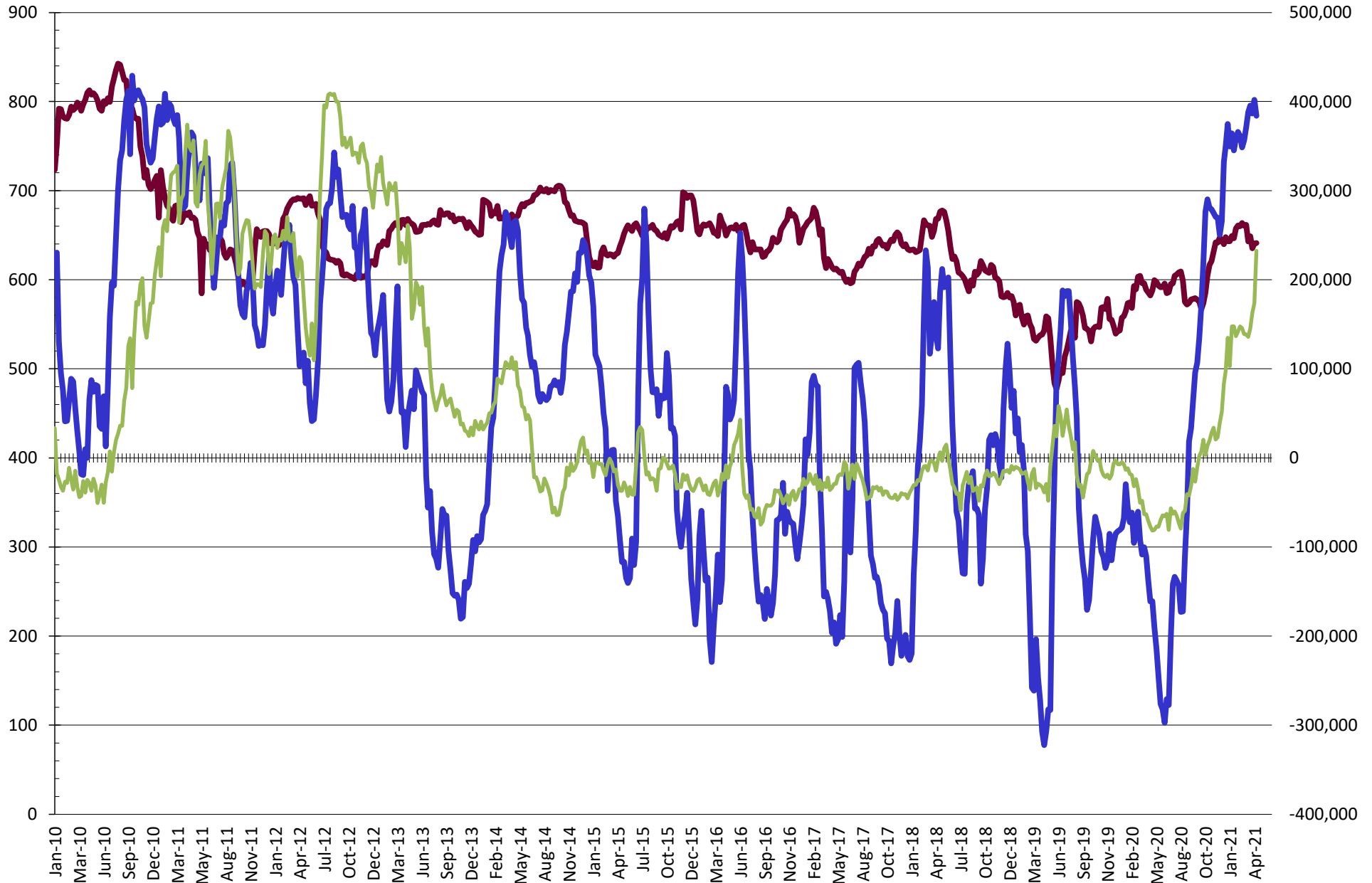
NET POSITION FUTURES AND OPTIONS OF SWAP AND MANAGED FUNDS IN SOYBEAN MEAL



NET POSITION FUTURES AND OPTIONS OF SWAP AND MANAGED FUNDS IN SOYBEAN OIL

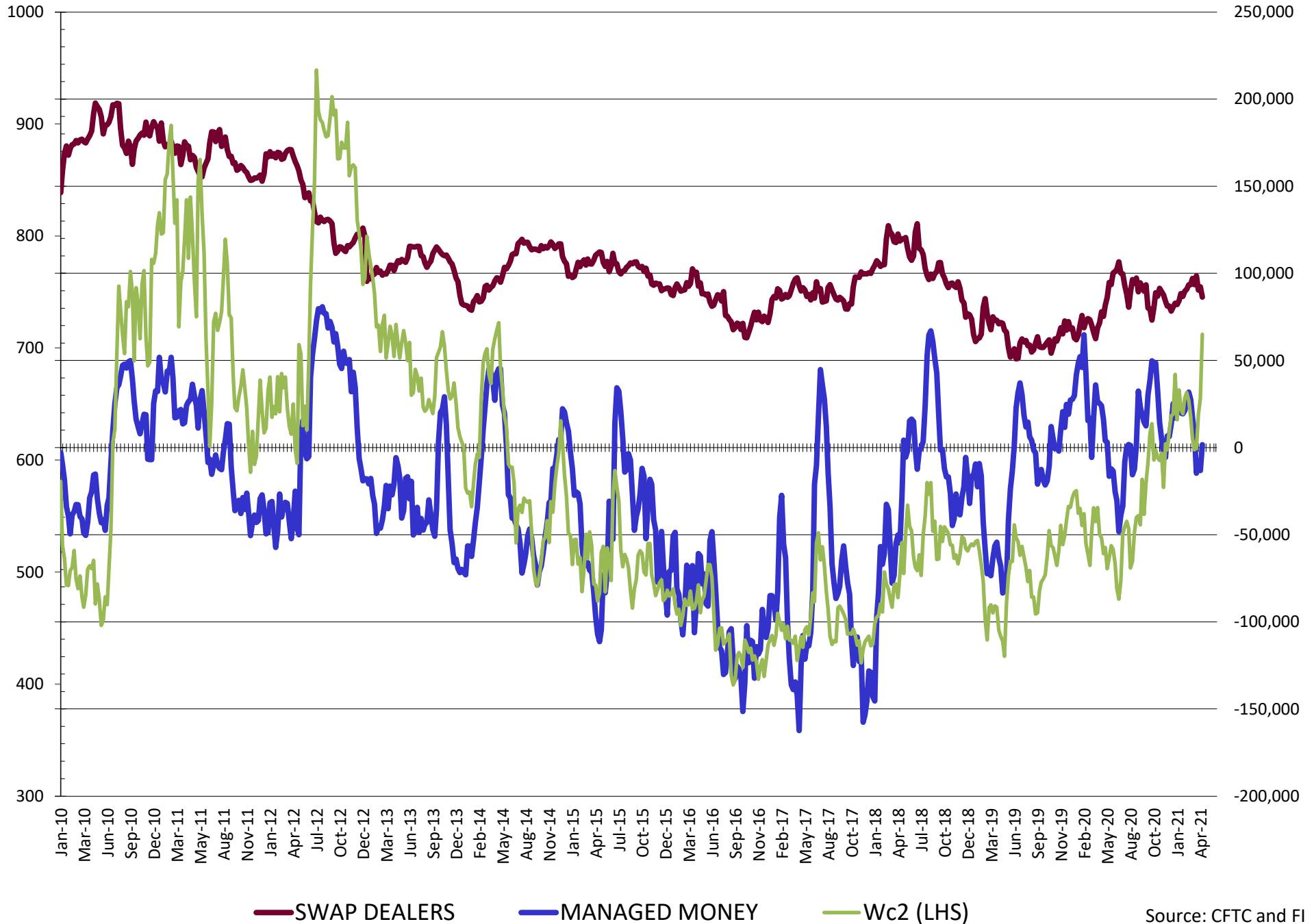


NET POSITION FUTURES AND OPTIONS OF SWAP AND MANAGED FUNDS IN CORN

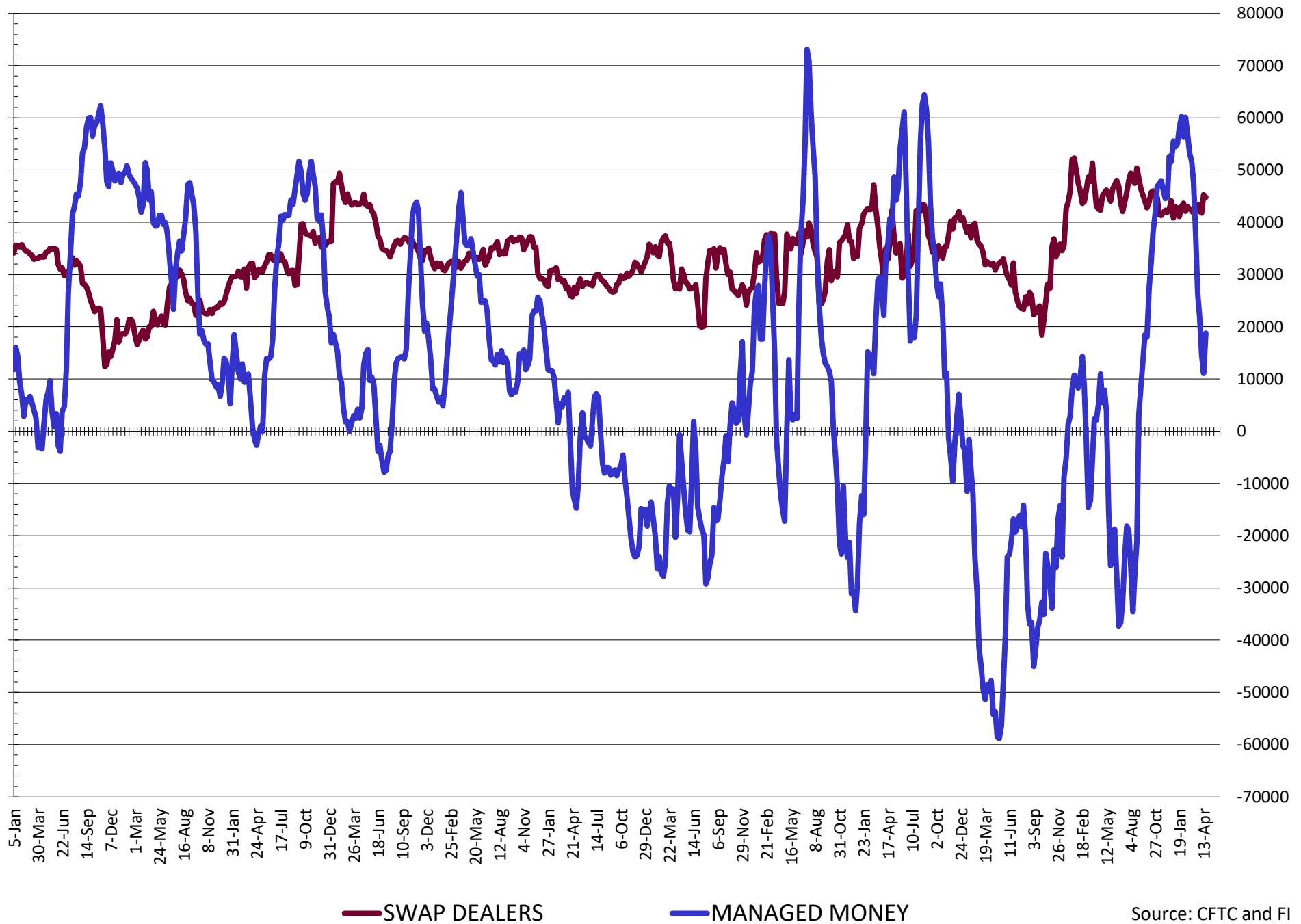


— SWAP DEALERS
 — MANAGED MONEY
 — Cc2 (LHS)

NET POSITION FUTURES AND OPTIONS OF SWAP AND MANAGED FUNDS IN CHICAGO WHEAT

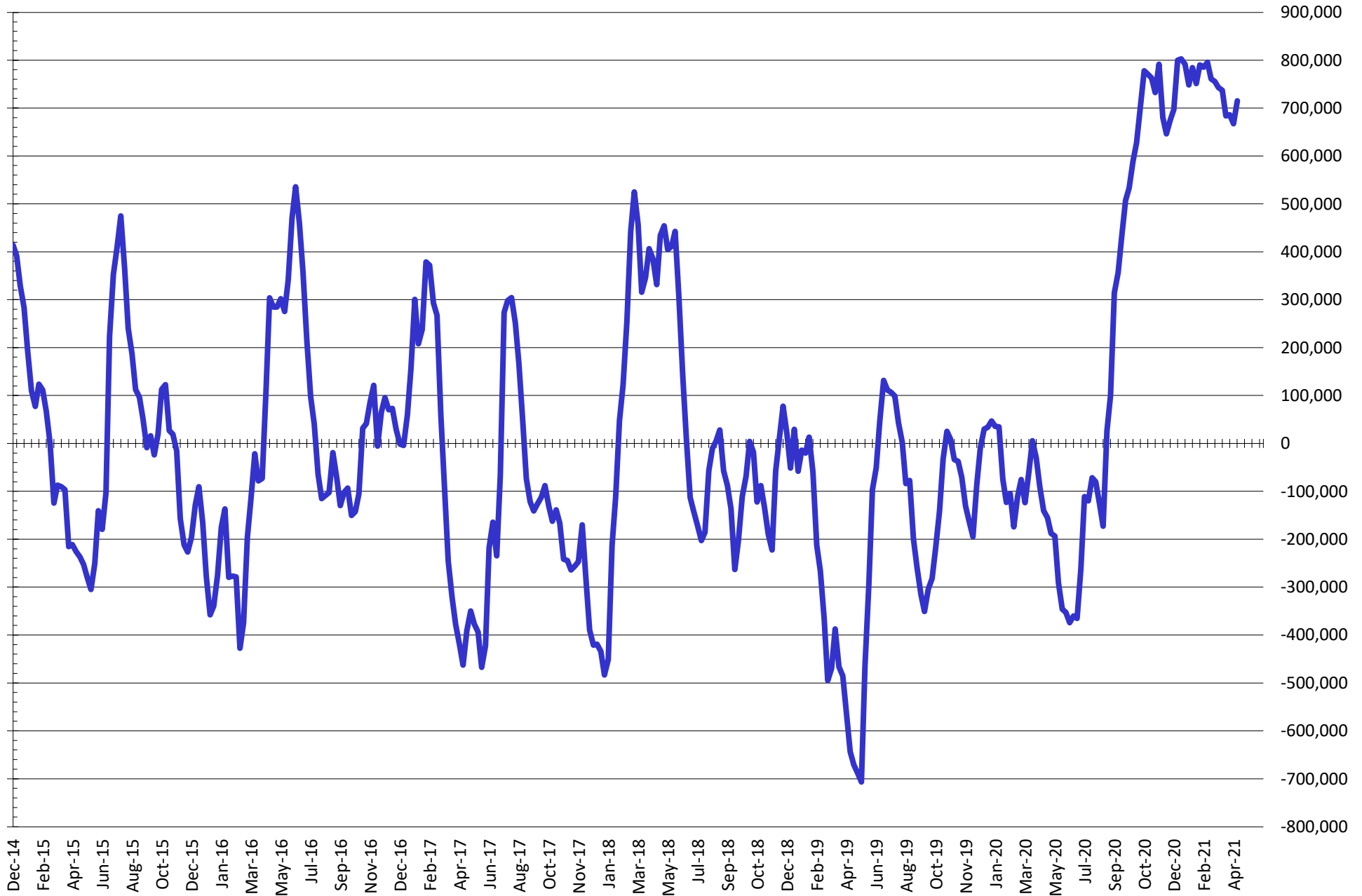


NET POSITION FUTURES AND OPTIONS OF SWAP AND MANAGED FUNDS IN KANSAS WHEAT



Source: CFTC and FI
4/23/2021

NET POSITION FUTURES AND OPTIONS OF SWAP AND MANAGED FUNDS IN COMBINED SRW, HRW, CORN, SOYBEANS, SOYMEAL AND SOYOIL



— Net Managed Money

Source: CFTC and FI
4/23/2021

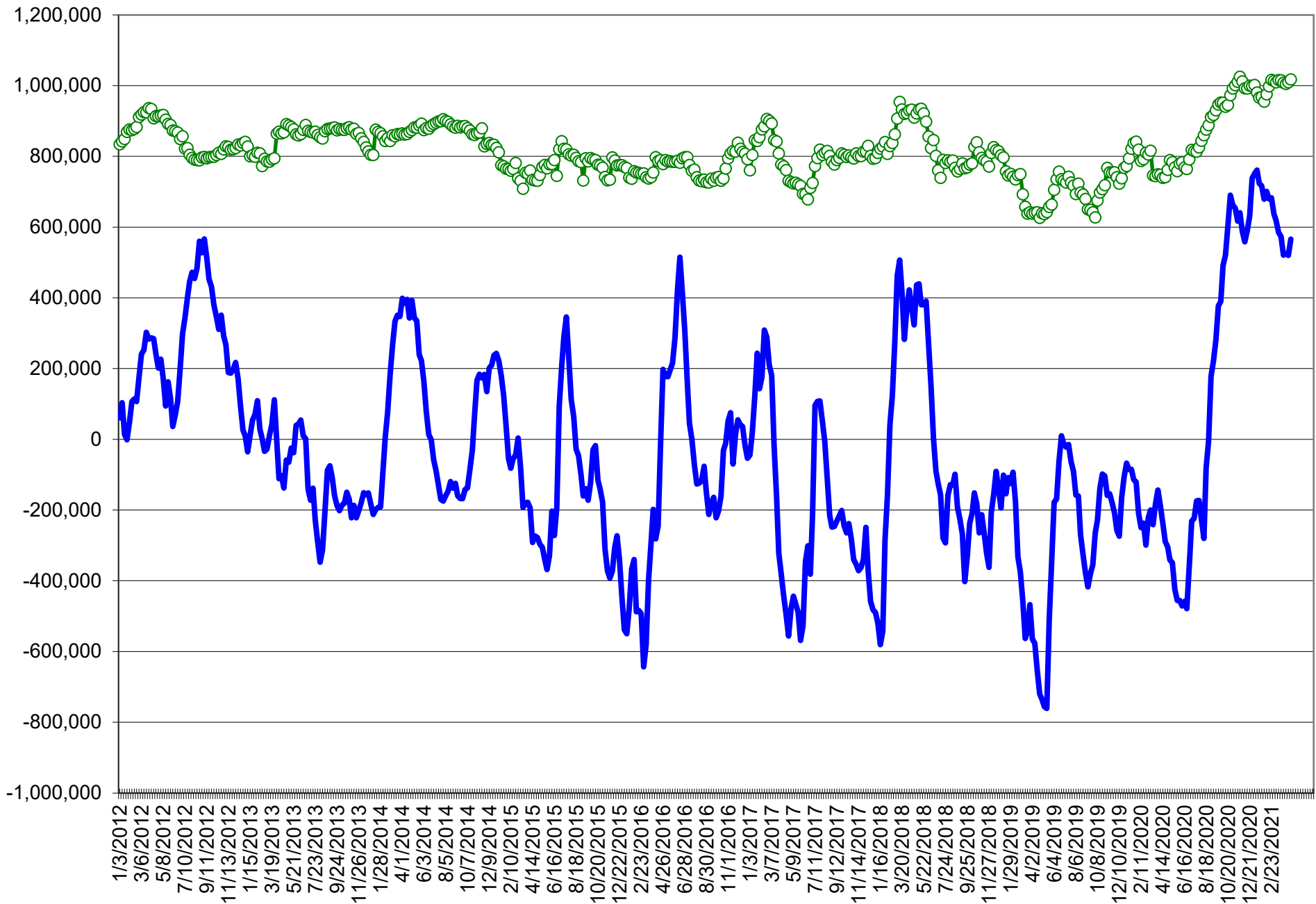
COMMITMENT OF TRADERS
FUTURES & OPTIONS NET POSITIONS (INDEX BROKEN OUT)
AS OF 04/20/2021
(IN THOUSAND CONTRACTS)

	COMMERCIAL				(FUND) NON COMMERCIAL				(SPEC) NON-REPORTABLE			
	20-Apr	13-Apr	6-Apr	30-Mar	20-Apr	13-Apr	6-Apr	30-Mar	20-Apr	13-Apr	6-Apr	30-Mar
	WHEAT											
Chicago	(120.8)	(107.7)	(107.0)	(105.2)	(25.3)	(40.5)	(35.5)	(39.9)	(12.5)	(12.2)	(13.0)	(12.3)
Kansas City	(71.3)	(62.5)	(56.8)	(63.5)	6.8	(0.4)	(3.1)	1.7	0.9	0.1	(1.2)	(2.4)
Minneapolis	-	-	-	-	-	-	-	-	-	-	-	-
All Wheat	(192.1)	(170.2)	(163.7)	(168.7)	(18.5)	(40.8)	(38.5)	(38.3)	(11.7)	(12.1)	(14.2)	(14.7)
CORN	(755.1)	(758.1)	(739.3)	(746.1)	354.9	375.8	355.7	362.1	(16.6)	(31.1)	(30.8)	(35.0)
OATS	-	-	-	-	-	-	-	-	-	-	-	-
SOYBEANS	(309.0)	(270.2)	(283.4)	(249.4)	133.0	102.0	114.5	98.7	3.0	(3.2)	(3.2)	(14.2)
SOY OIL	(195.5)	(186.2)	(186.1)	(184.8)	61.2	53.3	46.6	48.8	19.4	17.7	19.0	14.9
SOY MEAL	(158.9)	(144.8)	(159.4)	(159.3)	35.5	29.7	47.2	49.4	33.2	28.8	30.6	28.5

	TOTAL OPEN INTEREST				(INDEX) COMMERCIAL INDEX TRADERS				(INDEX) % NET OF TOTAL OPEN INTEREST			
	20-Apr	13-Apr	6-Apr	30-Mar	20-Apr	13-Apr	6-Apr	30-Mar	20-Apr	13-Apr	6-Apr	30-Mar
	WHEAT											
Chicago	548,563	528,463	500,331	511,903	158.7	160.4	155.4	157.4	28.9%	30.3%	31.1%	30.7%
Kansas City	233,678	238,080	249,263	242,246	63.6	62.7	61.1	64.3	27.2%	26.3%	24.5%	26.5%
Minneapolis	-	-	-	-	-	-	-	-	-	-	-	-
All Wheat	782,241	766,543	749,594	754,149	222.3	223.1	216.4	221.7	28.4%	29.1%	28.9%	29.4%
CORN	2,547,704	2,448,675	2,364,959	2,320,111	416.8	413.4	414.4	419.0	16.4%	16.9%	17.5%	18.1%
OATS	-	-	-	-	-	-	-	-	-	-	-	-
SOYBEANS	1,249,501	1,208,328	1,193,107	1,175,658	173.1	171.4	172.1	164.9	13.9%	14.2%	14.4%	14.0%
SOY OIL	622,088	598,089	603,836	589,479	114.9	115.3	120.5	121.1	18.5%	19.3%	20.0%	20.6%
SOY MEAL	477,120	477,525	476,527	470,594	90.3	86.4	81.5	81.5	18.9%	18.1%	17.1%	17.3%

SOURCE: CFTC & FI

NET POSITION FUTURES AND OPTIONS OF SPECULATORS AND INDEX FUNDS IN COMBINED SRW, HRW, CORN, SOYBEANS, SOYMEAL AND SOYOIL



Source: CFTC and FI

○ Net Index

— Net Speculator

4/23/2021

Disclaimer

TO CLIENTS/PROSPECTS OF FUTURES INTERNATIONAL, SEE RISK DISCLOSURE BELOW:

THIS COMMUNICATION IS CONVEYED AS A SOLICITATION FOR ENTERING INTO A DERIVATIVES TRANSACTION.

Any trading recommendations and market or other information to Customer by Futures International (FI), although based upon information obtained from sources believed by FI to be reliable may not be accurate and may be changed without notice to customer. FI makes no guarantee as to the accuracy or completeness of any of the information or recommendations furnished to Customer. Customer understands that FI, its managers, employees and/or affiliates may have a position in commodity futures, options or other derivatives which may not be consistent with the recommendations furnished by FI to Customer.

The risk of trading futures and options and other derivatives involves a substantial risk of loss and is not suitable for all persons. In purchasing an option, the risk is limited to the premium paid, and all commissions and fees involved with the trade. When an option is shorted or written, the writer of the option has unlimited risk with respect to the option written. The use of options strategies such as a straddles and strangles involve multiple option positions and may substantially increase the amount of commissions and fees paid to execute the strategy. Option prices do not necessarily move in tandem with cash or futures prices. Each person must consider whether a particular trade, combination of trades or strategy is suitable for that person's financial means and objectives.

This material may include discussions of seasonal patterns, however, futures prices have already factored in the seasonal aspects of supply and demand, and seasonal patterns are no indication of future market trends. Finally, past performance is not indicative of future results.

This communication may contain links to third party websites which are not under the control of FI and FI is not responsible for their content. Products and services are offered only in jurisdictions where solicitation and sale are lawful, and in accordance with applicable laws and regulations in each such jurisdiction.