

# CFTC COMMITMENT OF TRADERS REPORT

As of 3/2/2021

## TRADITIONAL FUNDS net position changes

Wed to Tue, in 000 contracts

	Corn	Bean	Meal	Oil	Chi. Wheat	KC Wheat	Min Wheat
Futures Only	(26.1)	(16.1)	(3.6)	(5.2)	2.5	2.9	1.9
Futures & Options Combined	(27.9)	(26.6)	(4.4)	(3.6)	2.5	2.9	1.8

## TRADITIONAL COMMERCIAL net position changes

	Corn	Bean	Meal	Oil	Chi. Wheat	KC Wheat	Min Wheat
Futures Only	21.6	13.1	4.8	4.9	(1.4)	4.8	(2.9)
Futures & Options Combined	22.3	23.8	5.2	3.4	(1.4)	4.8	(2.8)

## MANAGED MONEY net position changes

	Corn	Bean	Meal	Oil	Chi. Wheat	KC Wheat	Min Wheat
Futures Only	(14.2)	(16.6)	(4.4)	(4.3)	4.9	(1.5)	1.9
Futures & Options Combined	(12.6)	(16.8)	(4.1)	(4.6)	4.9	(1.5)	1.9

## SWAP DEALERS net position changes

	Corn	Bean	Meal	Oil	Chi. Wheat	KC Wheat	Min Wheat
Futures Only	1.6	10.2	(0.9)	(2.6)	1.9	(0.4)	0.8
Futures & Options Combined	3.7	14.8	(1.1)	(2.2)	2.5	(0.4)	0.7

## PRODUCERS/END USERS net position changes

	Corn	Bean	Meal	Oil	Chi. Wheat	KC Wheat	Min Wheat
Futures Only	20.0	2.9	5.7	7.5	(3.2)	5.2	(3.7)
Futures & Options Combined	18.7	9.1	6.2	5.6	(3.9)	5.2	(3.6)

## INDEX net position changes

	Corn	Bean	Meal	Oil	Chi. Wheat	KC Wheat	Min Wheat
Futures & Options Combined	0.8	3.0	(2.9)	(3.1)	(0.3)	(1.0)	NA

## SUPPLEMENTAL NON-COMMERCIAL net position changes

	Corn	Bean	Meal	Oil	Chi. Wheat	KC Wheat	Min Wheat
Futures & Options Combined	(24.2)	(25.3)	(2.7)	(2.1)	5.3	3.7	NA

## OPEN INTEREST net position changes

Wed to Tue, in 000 contracts

	Corn	Bean	Meal	Oil	Chi. Wheat	KC Wheat	Min Wheat
Futures Only	(129.5)	(41.3)	(6.5)	(13.0)	(11.8)	(5.6)	(1.9)
Futures & Options Combined	(104.1)	(16.6)	(4.0)	(2.5)	(5.7)	(5.3)	(1.7)

Source: CFTC and FI

Wed to Tue, in 000 contracts

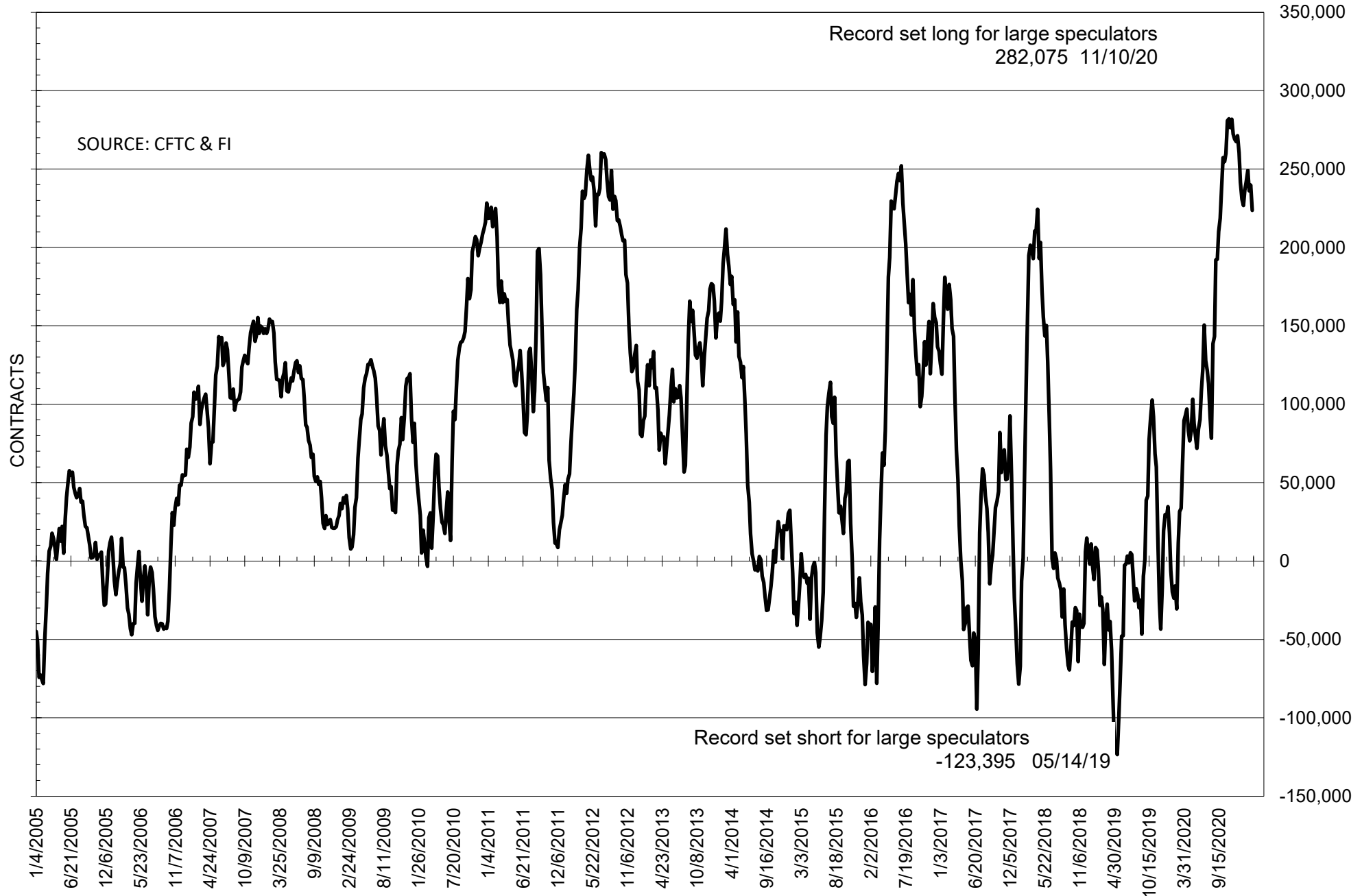
**COMMITMENT OF TRADERS  
FUTURES ONLY NET POSITIONS  
AS OF 03/02/2021  
(IN THOUSAND CONTRACTS)**

	COMMERCIAL				(FUND) NON COMMERCIAL				(SPEC) NON-REPORTABLE			
	2-Mar	23-Feb	16-Feb	9-Feb	2-Mar	23-Feb	16-Feb	9-Feb	2-Mar	23-Feb	16-Feb	9-Feb
	<b>WHEAT</b>											
<b>Chicago</b>	-16.8	-15.5	-21.0	-17.9	29.9	27.4	31.8	27.8	-13.1	-11.9	-10.8	-9.9
<b>Kansas City</b>	-47.2	-52.0	-56.4	-58.7	52.1	49.2	54.2	56.2	-4.9	2.8	2.3	2.5
<b>Minneapolis</b>	-21.4	-18.5	-16.3	-17.4	16.6	14.7	12.7	14.7	4.8	3.8	3.6	2.7
<b>All Wheat</b>	-85.4	-85.9	-93.7	-94.0	98.6	91.3	98.7	98.7	-13.2	-5.4	-4.9	-4.7
<b>CORN</b>	-476.2	-497.8	-481.3	-495.0	503.8	529.8	514.5	522.4	-27.6	-32.0	-33.1	-27.4
<b>OATS</b>	-2.3	-2.3	-2.4	-2.6	1.4	1.4	1.6	1.4	0.9	0.9	0.8	1.1
<b>SOYBEANS</b>	-213.7	-226.7	-229.0	-246.9	223.7	239.8	236.1	249.2	-10.0	-13.1	-7.1	-2.3
<b>SOY OIL</b>	-144.9	-149.7	-144.4	-144.6	124.0	129.1	122.0	122.7	20.9	20.6	22.4	21.9
<b>SOY MEAL</b>	-119.7	-124.5	-123.6	-129.4	95.2	98.8	97.6	97.1	24.5	25.7	26.0	32.3

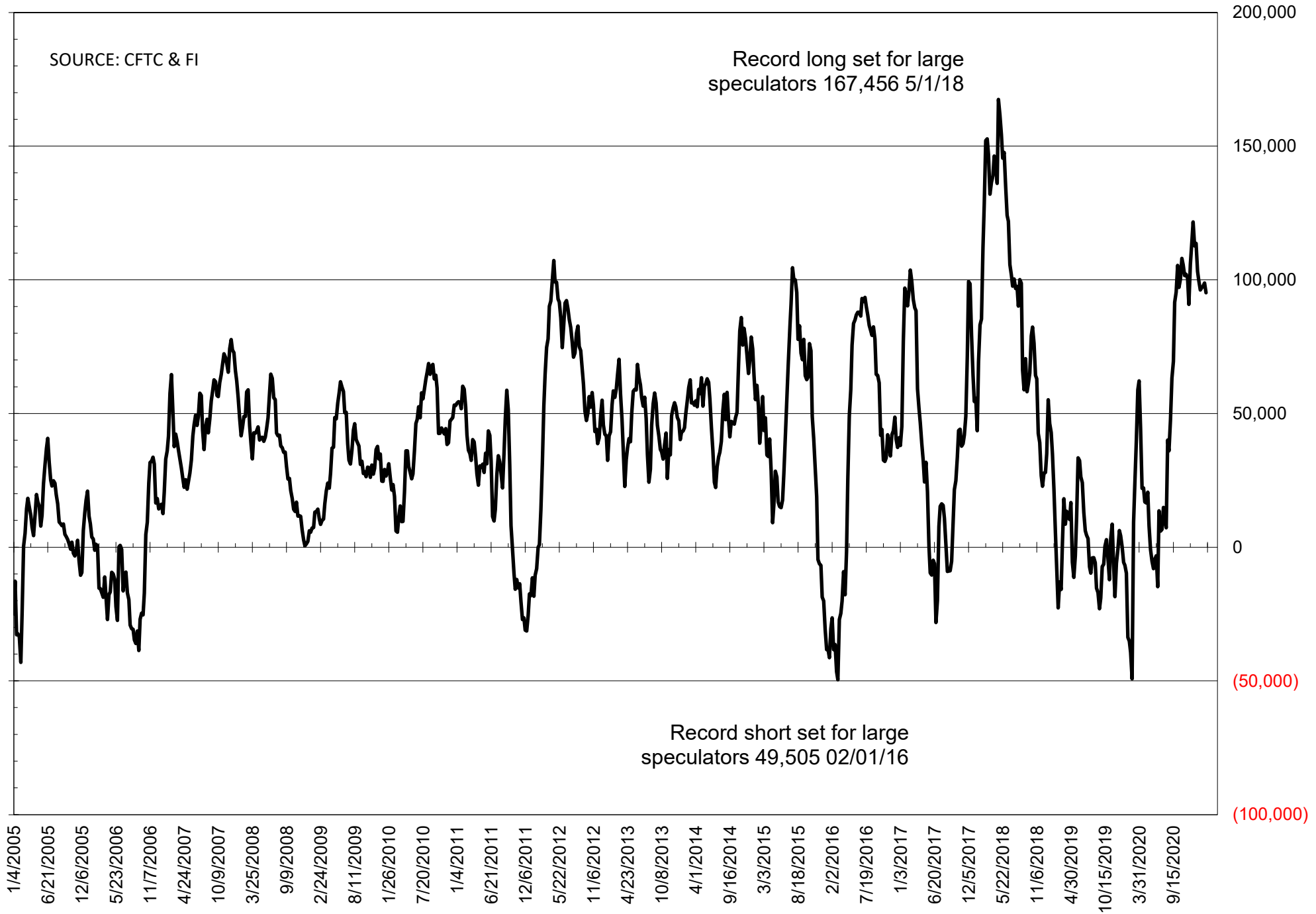
	TOTAL OPEN INTEREST				NEARBY FUTURES PRICE					2-Mar-21 LAST REPORTED % HELD BY TRADERS			
	2-Mar	23-Feb	16-Feb	9-Feb	K Latest	K 2-Mar	H 23-Feb	H 16-Feb	H 9-Feb	LARGE FUND		SMALL	
										LONG	SHORT	LONG	SHORT
<b>WHEAT</b>													
<b>Chicago</b>	418842	430668	439815	438015	653.00	666.75	665.75	657.50	649.50	0%	24%	0%	11%
<b>Kansas City</b>	223072	228710	229412	227114	626.25	635.25	641.00	637.50	633.50	0%	10%	0%	11%
<b>Minneapolis</b>	81568	83490	89654	90793	645.25	645.25	636.00	631.25	626.50	0%	7%	0%	13%
<b>CORN</b>	1799033	1928495	1948459	1970144	545.50	545.00	553.75	552.25	556.25	0%	4%	0%	10%
<b>OATS</b>	4169	4327	4459	4636	384.00	368.25	363.00	353.25	354.00	0%	0%	0%	18%
<b>SOYBEANS</b>	848466	889784	910575	916791	1430.00	1412.50	14066.00	1384.75	1401.75	31%	5%	8%	9%
<b>SOY OIL</b>	475547	488560	505477	486372	51.80	49.66	49.26	47.27	46.30	0%	5%	0%	5%
<b>SOY MEAL</b>	402730	409199	417288	413275	418.20	496.60	426.50	428.40	438.70	0%	4%	0%	7%

SOURCE: CFTC & FI

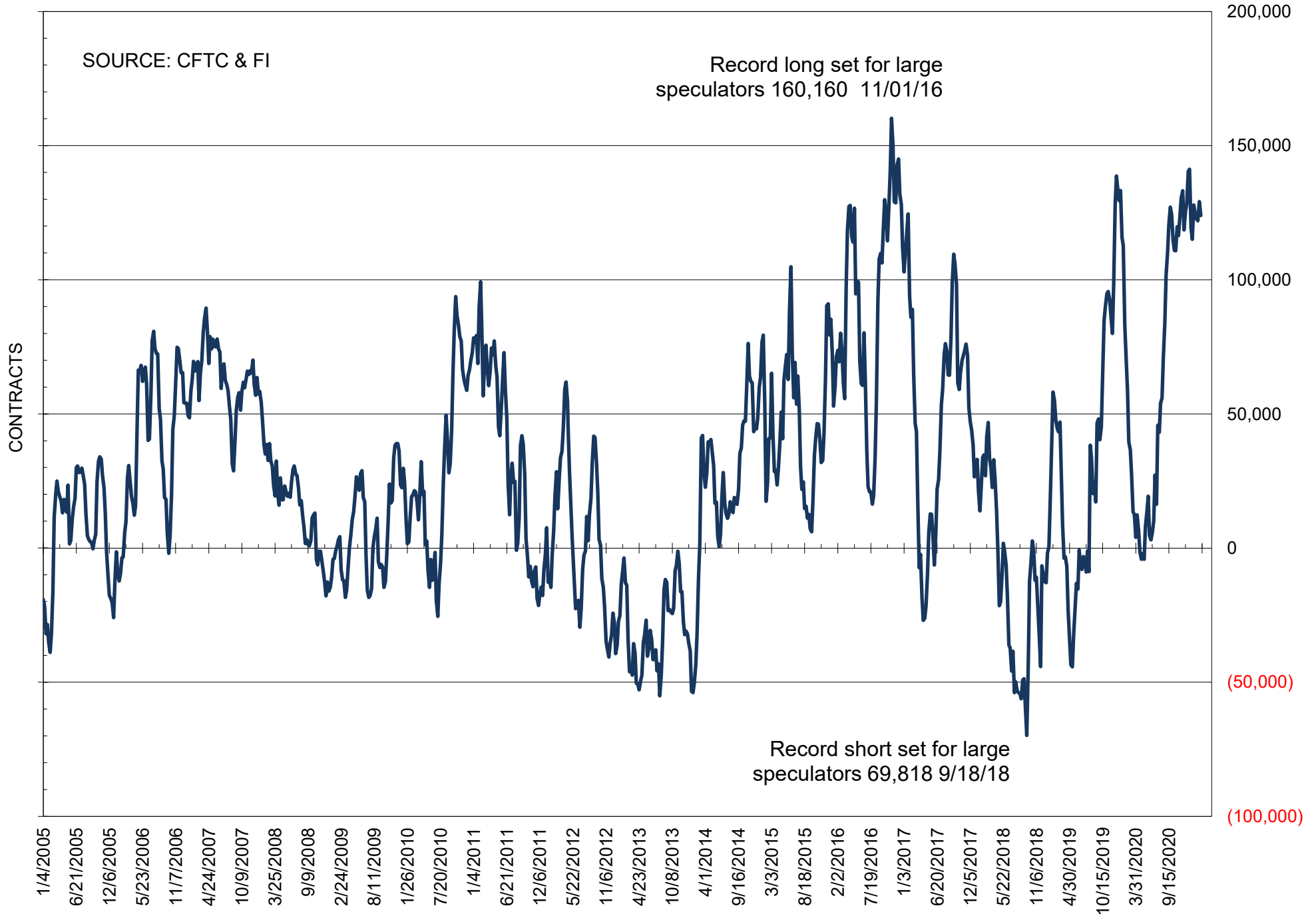
# NET POSITION OF FUTURES ONLY LARGE SPECS IN SOYBEANS



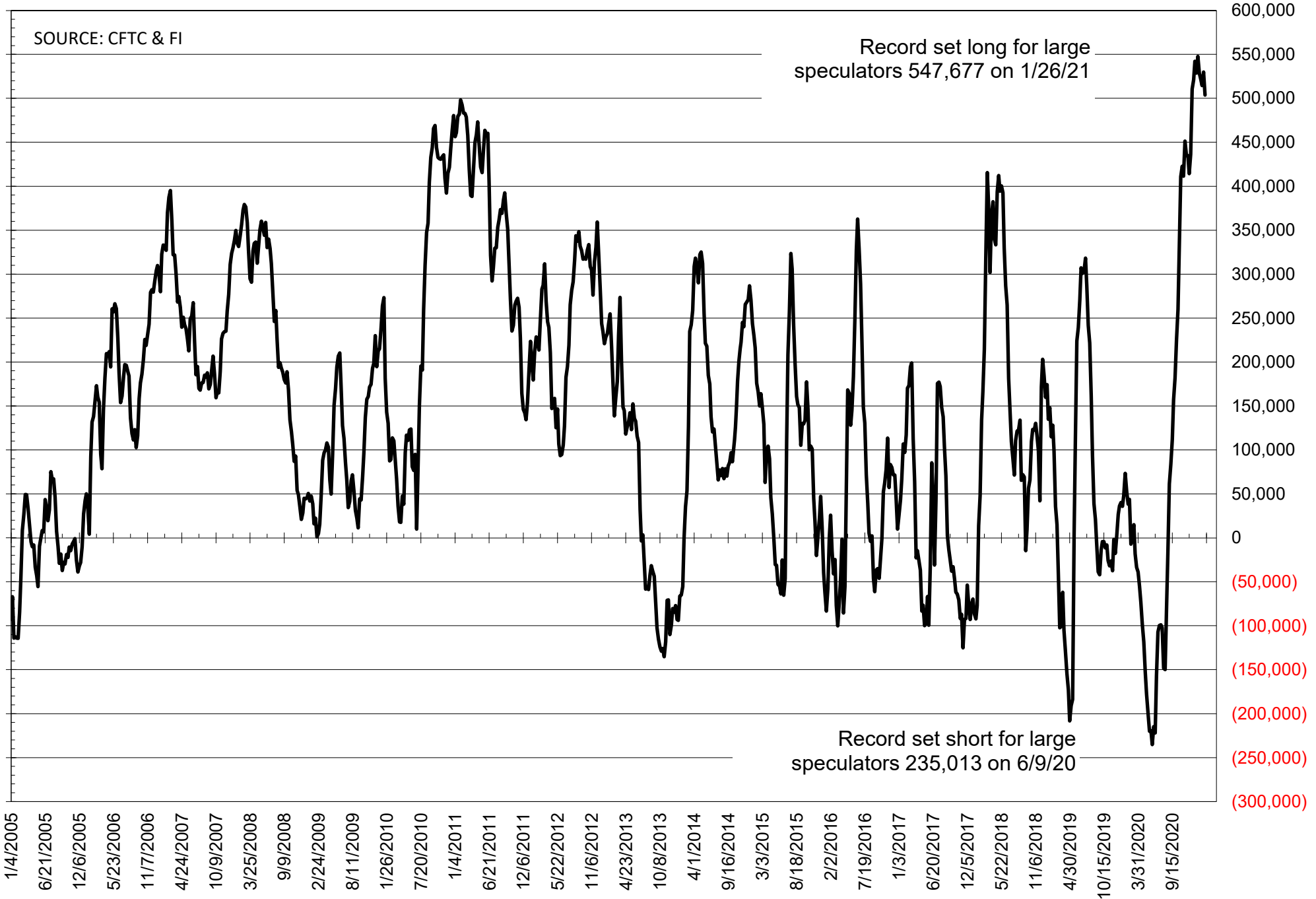
# NET POSITION OF FUTURES ONLY LARGE SPECS IN SOYMEAL



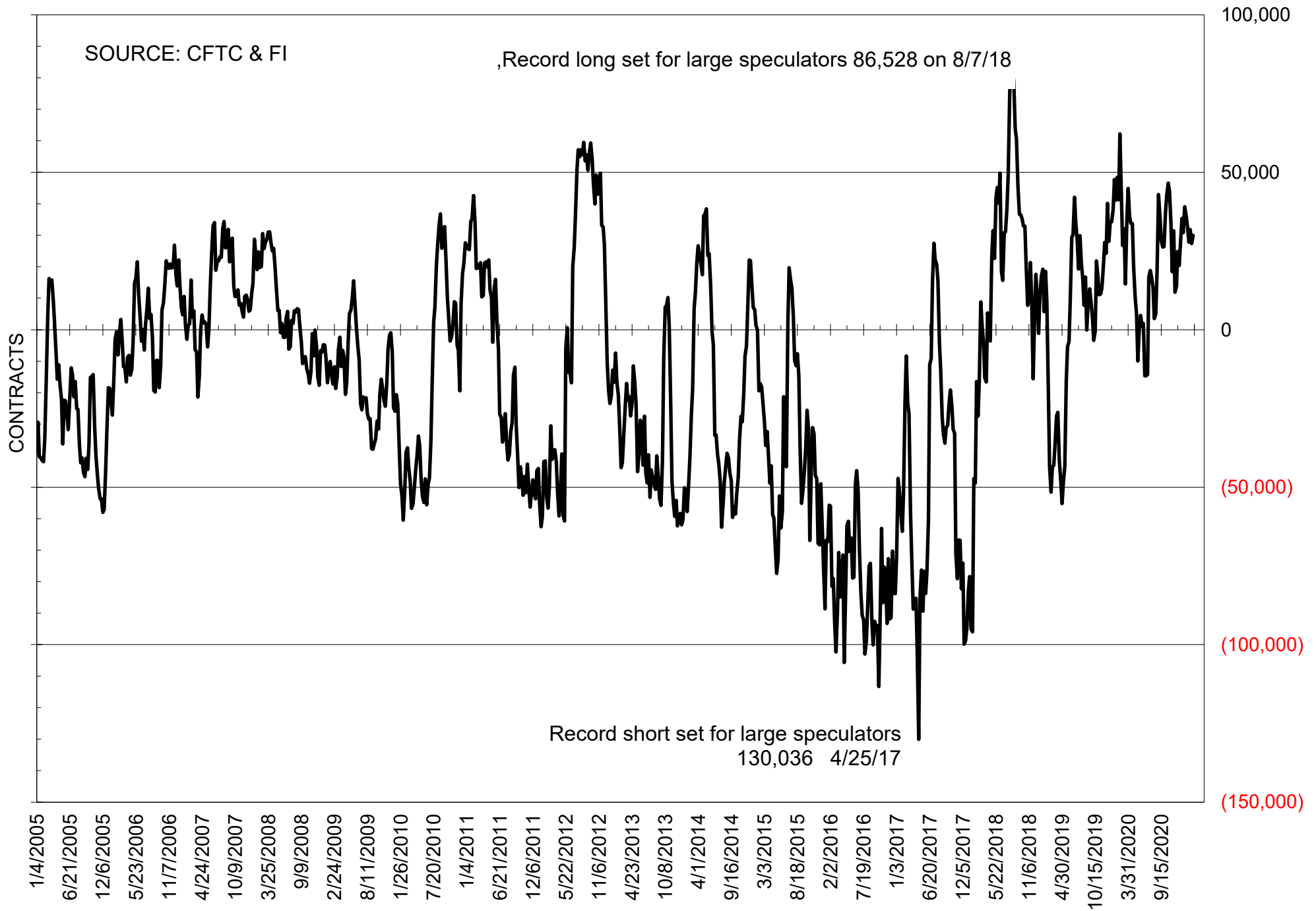
# NET POSITION OF FUTURES ONLY LARGE SPECS IN SOYOIL



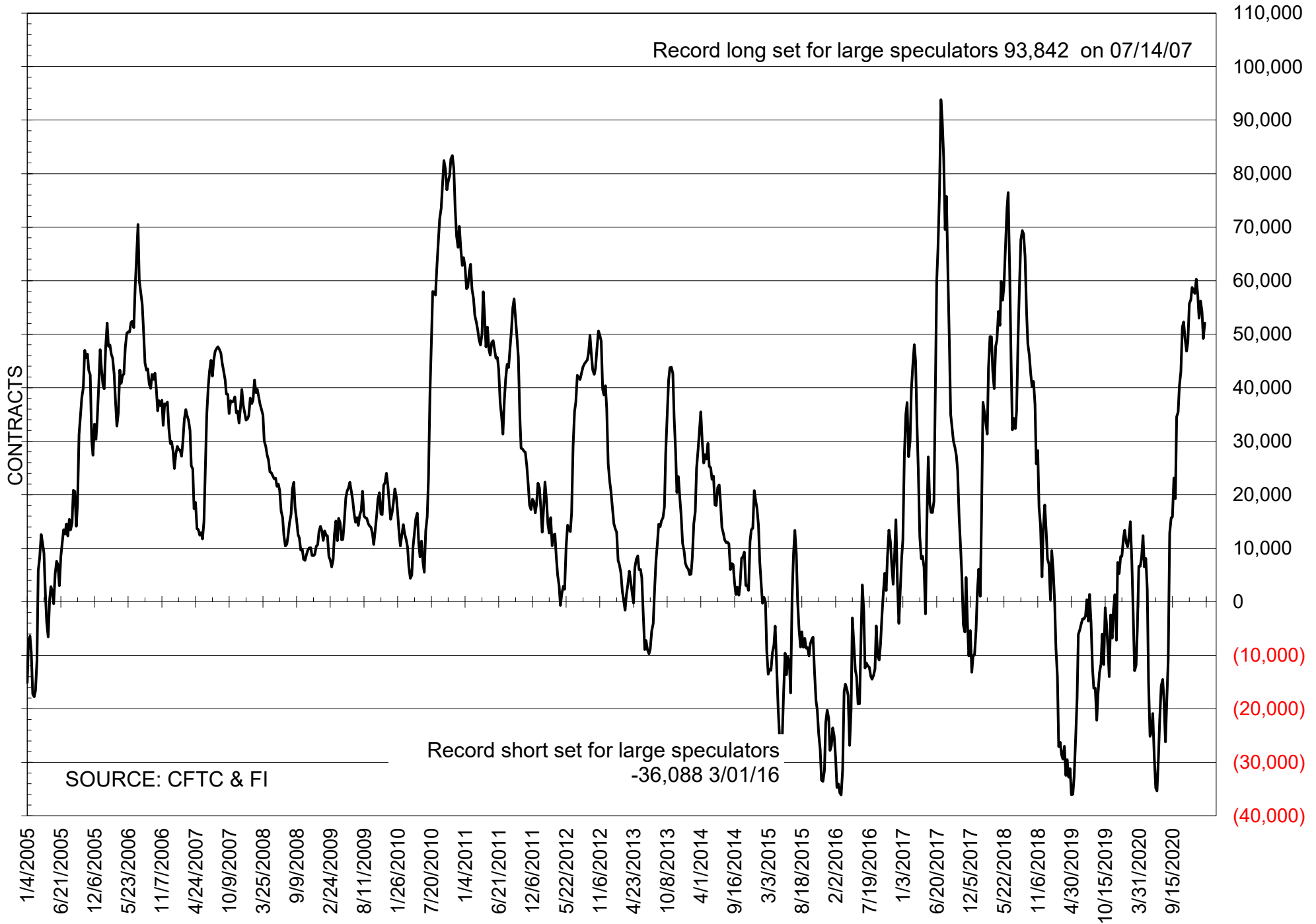
# NET POSITION OF LARGE SPECULATORS IN CORN



# NET POSITION OF FUTURES ONLY LARGE SPECS IN CHICAGO WHEAT

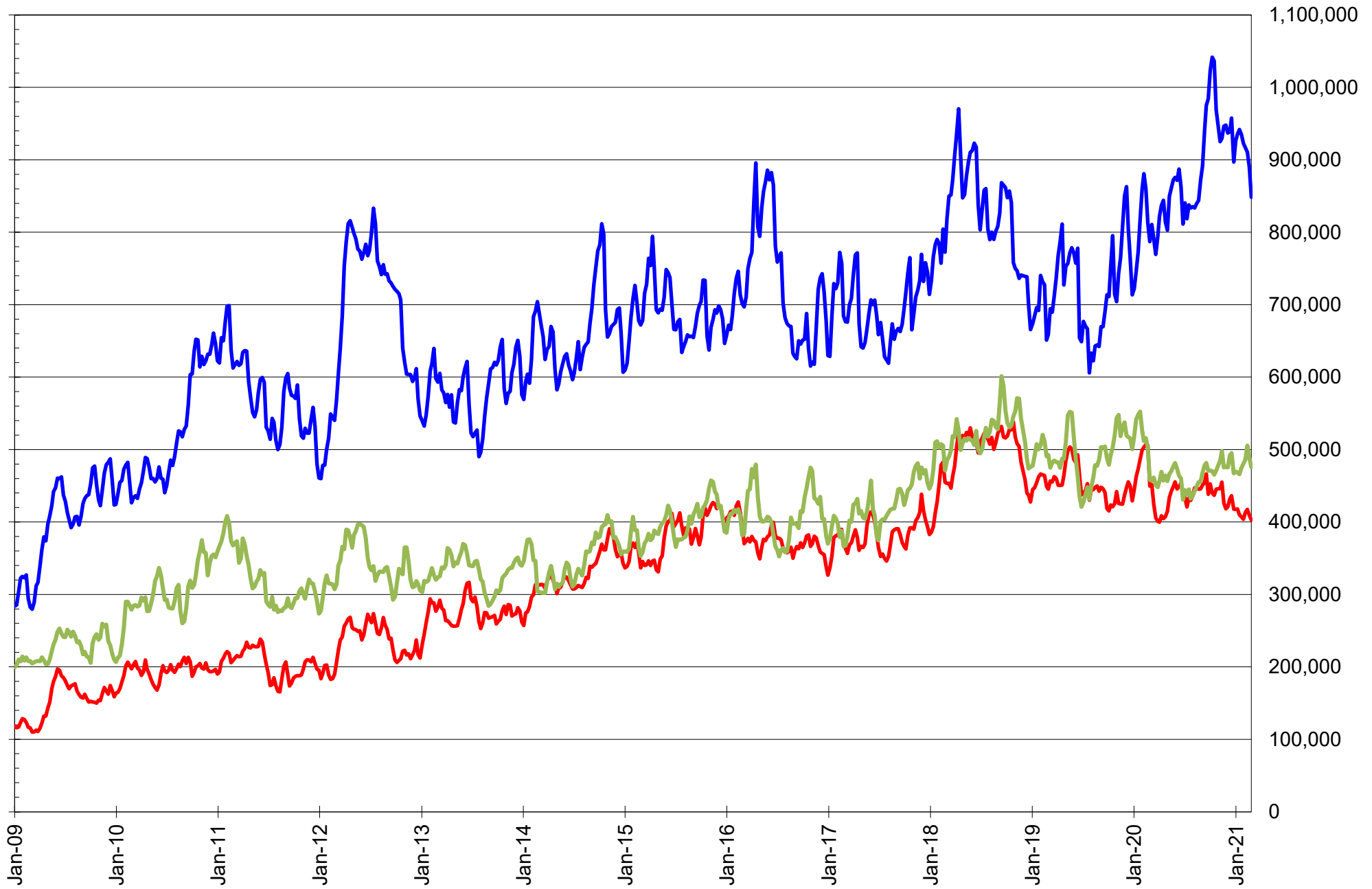


# NET POSITION OF LARGE SPECULATORS IN KANSAS CITY WHEAT





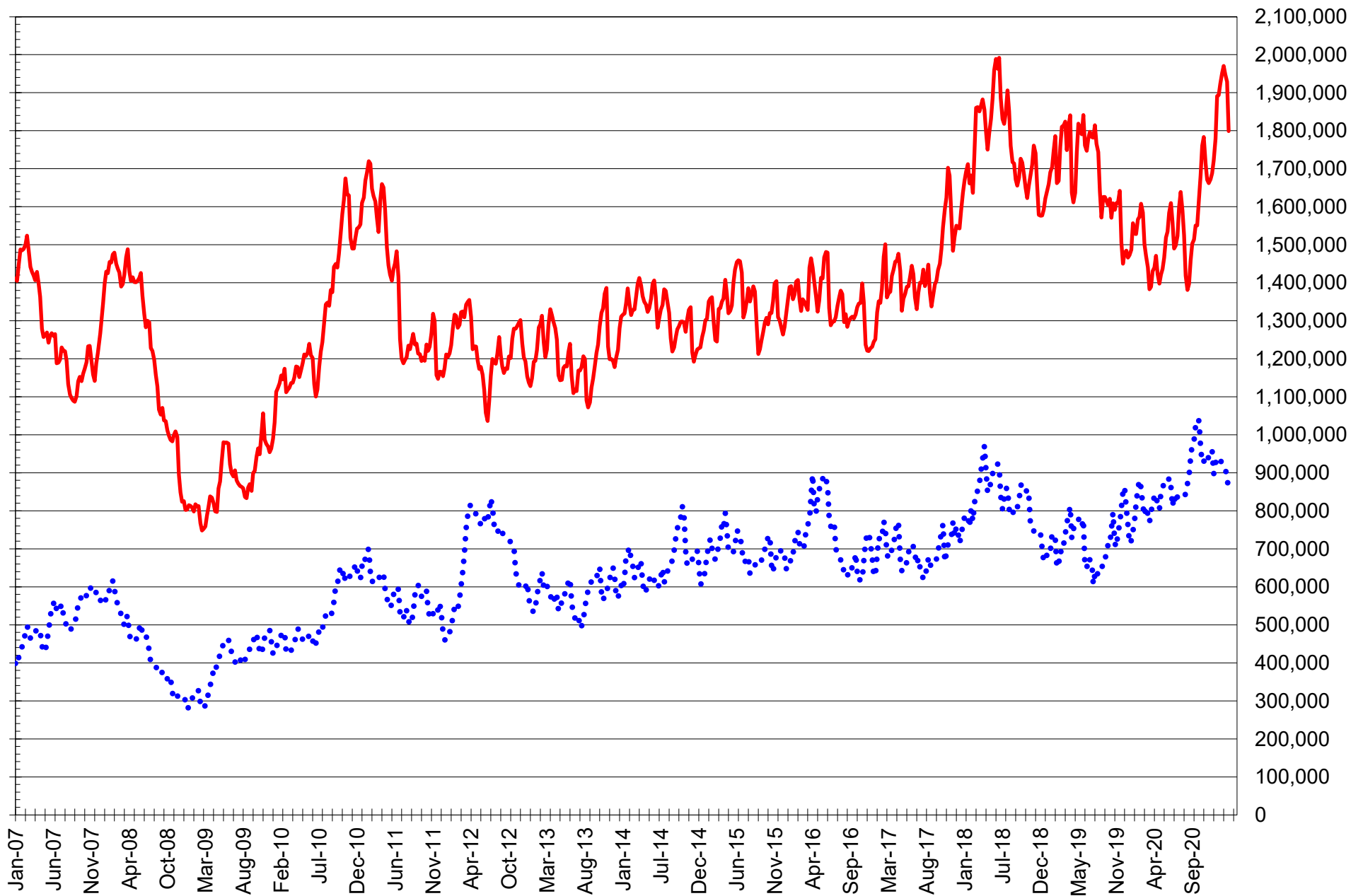
# TOTAL OPEN INTEREST IN SOYBEANS, MEAL AND OIL, FUTURES ONLY



SOURCE: CFTC & FI

— SOYBEANS — SOYBEAN MEAL — SOYBEAN OIL

# TOTAL OPEN INTEREST IN CORN AND SOYBEANS, FUTURES ONLY



SOURCE: CFTC & FI

— CORN

..... SOYBEANS

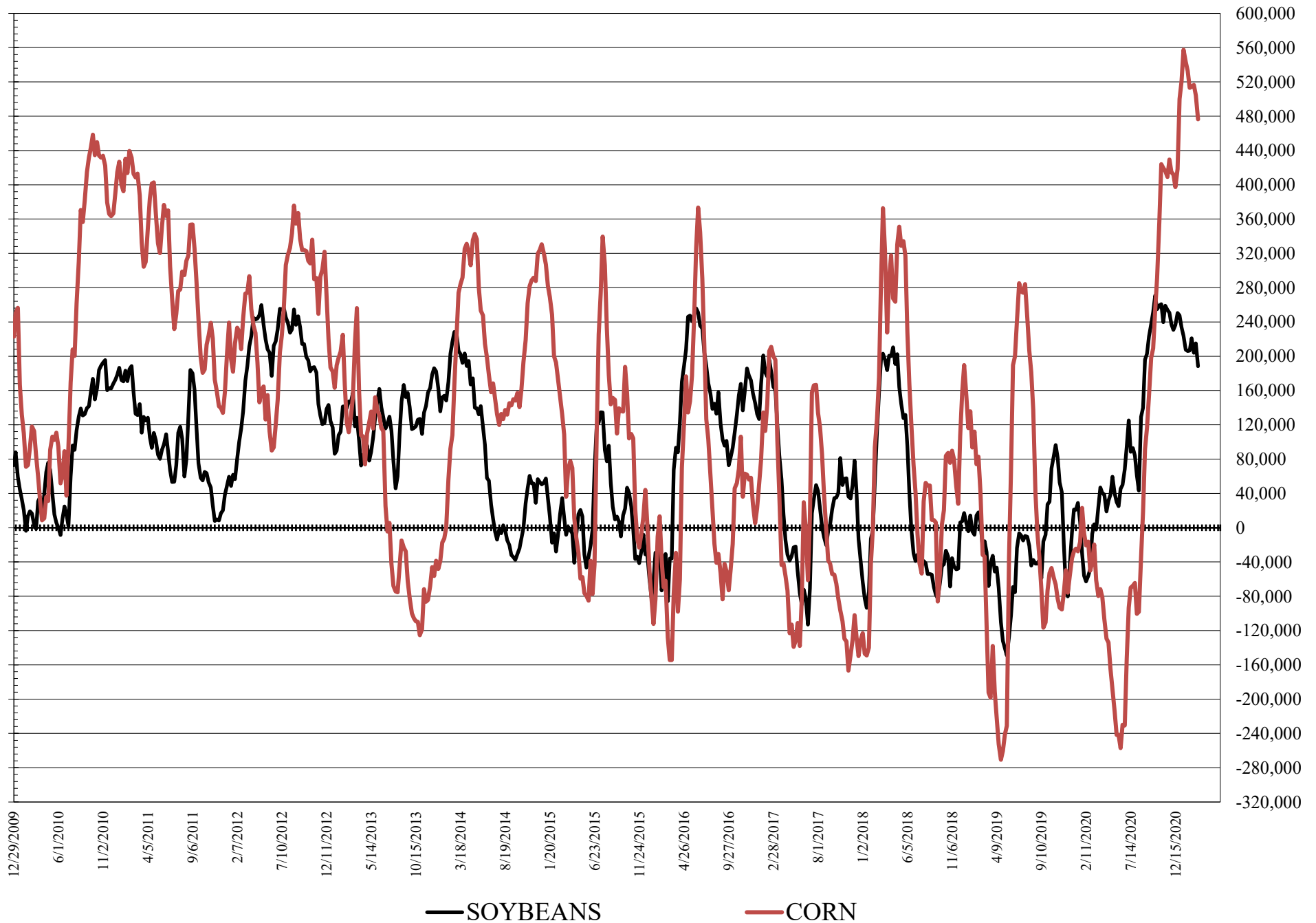
**COMMITMENT OF TRADERS  
FUTURES & OPTIONS NET POSITIONS  
AS OF 03/02/2021  
(IN THOUSAND CONTRACTS)**

	COMMERCIAL				(FUND) NON COMMERCIAL				(SPEC) NON-REPORTABLE			
	2-Mar	23-Feb	16-Feb	9-Feb	2-Mar	23-Feb	16-Feb	9-Feb	2-Mar	23-Feb	16-Feb	9-Feb
<b>WHEAT</b>												
Chicago	-28.2	-26.8	-24.5	-22.0	42.2	39.7	36.3	32.5	-14.0	-13.0	-11.8	-10.6
Kansas City	-46.8	-51.6	-54.4	-56.4	51.9	49.1	52.2	54.2	-5.1	2.5	2.2	2.3
Minneapolis	-21.3	-18.5	-16.9	-18.0	16.2	14.4	12.9	14.7	5.1	4.1	4.0	3.3
All Wheat	-96.3	-96.8	-95.8	-96.4	110.3	103.2	101.4	101.4	-14.0	-6.4	-5.6	-5.0
<b>CORN</b>	-466.0	-488.3	-499.7	-504.0	476.5	504.4	516.6	514.3	-10.6	-16.1	-16.9	-10.3
OATS	-2.3	-2.3	-2.3	-2.5	1.4	1.4	1.6	1.4	0.9	0.9	0.8	1.1
<b>SOYBEANS</b>	-182.3	-206.1	-201.5	-225.1	188.3	215.0	204.1	221.0	-6.1	-8.9	-2.6	4.1
SOY OIL	-146.5	-149.9	-148.4	-145.9	125.0	128.7	125.4	123.3	21.5	21.2	23.0	22.6
SOY MEAL	-112.4	-117.6	-115.3	-124.3	82.9	87.3	84.6	87.3	29.5	30.2	30.7	37.1

	TOTAL OPEN INTEREST				COMMERCIALS		% HELD BY TRADERS LARGE (FUNDS)		SMALL (NON-REP)	
	2-Mar	23-Feb	16-Feb	9-Feb	LONG	SHORT	LONG	SHORT	LONG	SHORT
<b>WHEAT</b>										
Chicago	510,549	516,298	561,553	557,908	34%	40%	25%	17%	7%	10%
Kansas City	238,498	243,842	251,963	248,840	35%	55%	30%	9%	9%	11%
Minneapolis	84,944	86,624	93,707	94,819	47%	72%	25%	6%	19%	13%
<b>CORN</b>	2,358,552	2,462,699	2,664,969	2,693,387	43%	63%	23%	3%	9%	10%
OATS	4,193	4,352	4,525	4,707						
<b>SOYBEANS</b>	1,156,624	1,173,245	1,294,632	1,321,924	43%	59%	20%	3%	7%	7%
SOY OIL	548,774	551,290	626,841	601,413	41%	67%	27%	4%	9%	5%
SOY MEAL	461,010	464,978	497,653	497,713	46%	70%	21%	3%	13%	6%

SOURCE: CFTC & FI

# NET POSITION FUTURES AND OPTIONS OF LARGE SPECULATORS IN SOYBEANS AND CORN



**DISAGGREGATED COMMITMENT OF TRADERS  
FUTURES ONLY NET POSITIONS  
AS OF 03/02/2021  
(IN THOUSAND CONTRACTS)**

	PRODUCER / MERCHANT / PROCESSOR / USER				(INDEX/ETF) SWAP DEALERS				(CTA/CPO/OTHER UNREGISTERED) MANAGED MONEY			
	2-Mar	23-Feb	16-Feb	9-Feb	2-Mar	23-Feb	16-Feb	9-Feb	2-Mar	23-Feb	16-Feb	9-Feb
	WHEAT											
Chicago	(112.7)	(109.5)	(107.9)	(101.6)	95.9	94.0	86.9	83.7	25.4	20.5	15.4	13.2
Kansas City	(89.6)	(94.7)	(99.4)	(100.8)	42.4	42.8	43.0	42.1	51.7	53.2	56.7	59.5
Minneapolis	(25.8)	(22.1)	(20.5)	(21.8)	4.4	3.6	4.2	4.3	14.1	12.2	12.2	12.9
All Wheat	(228.1)	(226.4)	(227.8)	(224.1)	142.7	140.4	134.0	130.1	91.1	85.8	84.3	85.6
CORN	(763.4)	(783.4)	(767.4)	(779.6)	287.2	285.6	286.0	284.5	330.8	345.1	348.5	340.4
OATS	(2.5)	(2.4)	(2.5)	(2.7)	0.1	0.1	0.1	0.1	0.8	0.8	1.0	0.9
SOYBEANS	(308.6)	(311.5)	(312.1)	(333.8)	95.0	84.8	83.1	86.9	143.3	159.9	149.6	159.5
SOY OIL	(235.8)	(243.3)	(236.9)	(235.7)	91.0	93.6	92.4	91.1	106.1	110.4	106.2	105.2
SOY MEAL	(189.8)	(195.6)	(193.3)	(197.6)	70.1	71.0	69.7	68.2	64.5	68.9	68.8	69.1
									Managed % of OI			
									Chicago W			
									Corn			
									6%	5%	3%	3%
									18%	18%	18%	17%
TOTAL												
	OPEN INTEREST				OTHER REPORTABLE				NON REPORTABLE			
	2-Mar	23-Feb	16-Feb	9-Feb	2-Mar	23-Feb	16-Feb	9-Feb	2-Mar	23-Feb	16-Feb	9-Feb
WHEAT												
Chicago	418,842	430,668	439,815	438,015	4.6	6.9	16.4	14.5	(13.1)	(11.9)	(10.8)	(9.9)
Kansas City	223,072	228,710	229,412	227,114	0.4	(4.0)	(2.5)	(3.3)	(4.9)	2.8	2.3	2.5
Minneapolis	81,568	83,490	89,654	90,793	2.5	2.6	0.5	1.8	4.8	3.8	3.6	2.7
All Wheat	723,482	742,868	758,881	755,922	7.5	5.5	14.4	13.1	(13.2)	(5.4)	(4.9)	(4.7)
CORN	1,799,033	1,928,495	1,948,459	1,970,144	172.9	184.8	166.0	182.1	(27.6)	(32.0)	(33.1)	(27.4)
OATS	4,169	4,327	4,459	4,636	0.6	0.6	0.6	0.6	0.9	0.9	0.8	1.1
SOYBEANS	848,466	889,784	910,575	916,791	80.3	79.9	86.5	89.6	(10.0)	(13.1)	(7.1)	(2.3)
SOY OIL	475,547	488,560	505,477	486,372	17.9	18.8	15.8	17.5	20.9	20.6	22.4	21.9
SOY MEAL	402,730	409,199	417,288	413,275	30.7	29.9	28.8	28.0	24.5	25.7	26.0	32.3

SOURCE: CFTC & FI

3/5/2021

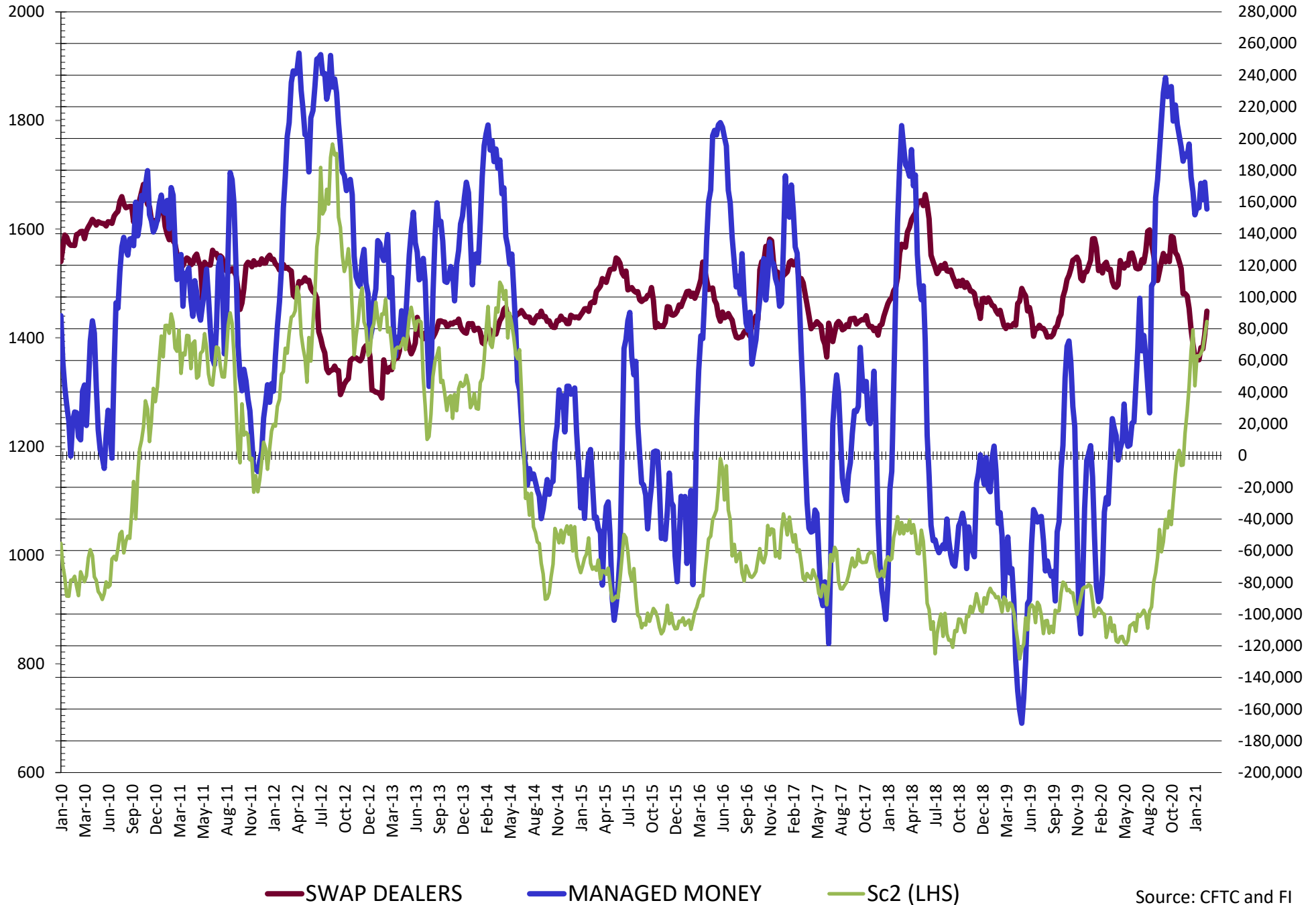
**DISAGGREGATED COMMITMENT OF TRADERS  
FUTURES & OPTIONS NET POSITIONS  
AS OF 03/02/2021  
(IN THOUSAND CONTRACTS)**

	PRODUCER / MERCHANT / PROCESSOR / USER				(INDEX/ETF) SWAP DEALERS				(CTA/CPO/OTHER UNREGISTERED) MANAGED MONEY			
	2-Mar	23-Feb	16-Feb	9-Feb	2-Mar	23-Feb	16-Feb	9-Feb	2-Mar	23-Feb	16-Feb	9-Feb
	WHEAT											
Chicago	(121.6)	(117.6)	(114.2)	(108.7)	93.4	90.9	89.8	86.7	31.8	26.9	21.3	19.3
Kansas City	(89.0)	(94.1)	(97.4)	(98.5)	42.2	42.6	43.0	42.1	51.7	53.2	57.1	60.1
Minneapolis	(25.5)	(22.0)	(20.6)	(21.8)	4.2	3.5	3.7	3.8	14.1	12.2	12.2	12.9
All Wheat	(236.1)	(233.8)	(232.2)	(229.0)	139.8	136.9	136.4	132.6	97.6	92.3	90.6	92.3
CORN	(729.6)	(748.2)	(760.4)	(761.4)	263.6	259.9	260.8	257.4	348.5	361.2	365.8	358.8
OATS	(2.4)	(2.4)	(2.5)	(2.6)	0.1	0.1	0.1	0.1	0.8	0.8	1.0	0.9
SOYBEANS	(273.4)	(282.5)	(268.7)	(293.2)	91.1	76.3	67.2	68.1	155.6	172.4	161.4	171.8
SOY OIL	(239.1)	(244.7)	(240.2)	(235.5)	92.5	94.8	91.9	89.6	108.1	112.6	110.4	110.4
SOY MEAL	(182.1)	(188.3)	(184.9)	(192.0)	69.7	70.7	69.6	67.7	65.4	69.5	69.4	69.6

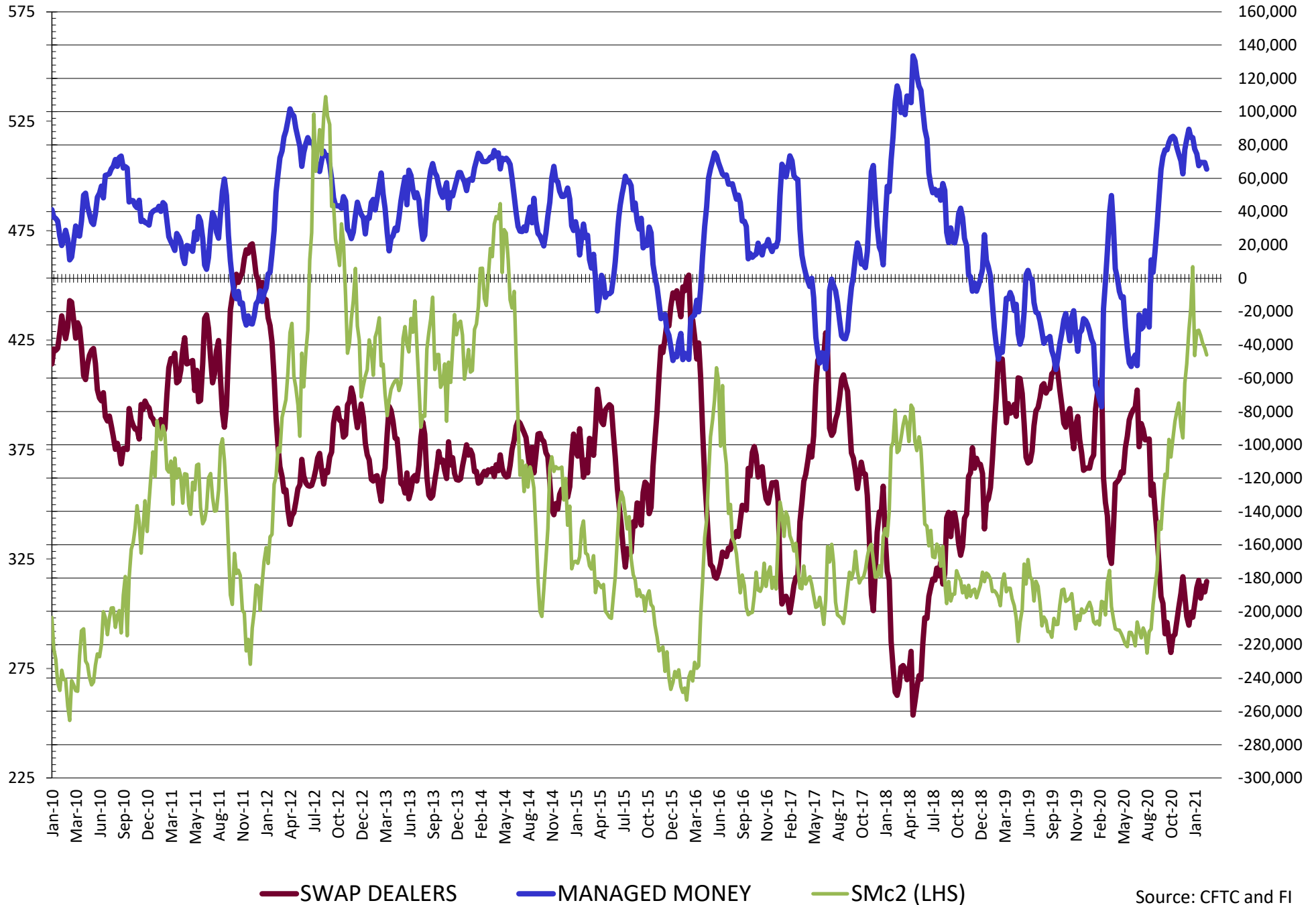
	TOTAL OPEN INTEREST				OTHER REPORTABLE				NON REPORTABLE			
	2-Mar	23-Feb	16-Feb	9-Feb	2-Mar	23-Feb	16-Feb	9-Feb	2-Mar	23-Feb	16-Feb	9-Feb
	WHEAT											
Chicago	510,549	516,298	561,553	557,908	10.4	12.8	15.0	13.2	(14.0)	(13.0)	(11.8)	(10.6)
Kansas City	238,498	243,842	251,963	248,840	0.2	(4.2)	(4.9)	(5.9)	(5.1)	2.5	2.2	2.3
Minneapolis	84,944	86,624	93,707	94,819	2.1	2.3	0.7	1.8	5.1	4.1	4.0	3.3
All Wheat	833,991	846,764	907,223	901,567	12.7	10.9	10.8	9.1	(14.0)	(6.4)	(5.6)	(5.0)
CORN	2,358,552	2,462,699	2,664,969	2,693,387	128.0	143.2	150.8	155.5	(10.6)	(16.1)	(16.1)	(16.1)
OATS	4,193	4,352	4,525	4,707	0.6	0.6	0.6	0.6	0.9	0.9	0.8	1.1
SOYBEANS	1,156,624	1,173,245	1,294,632	1,321,924	32.8	42.6	42.7	49.2	(6.1)	(8.9)	(2.6)	4.1
SOY OIL	548,774	551,290	626,841	601,413	16.9	16.0	15.0	12.9	21.5	21.2	23.0	22.6
SOY MEAL	461,010	464,978	497,653	497,713	17.5	17.9	15.2	17.7	29.5	30.2	30.7	37.1

SOURCE: CFTC & FI

# NET POSITION FUTURES AND OPTIONS OF SWAP AND MANAGED FUNDS IN SOYBEANS

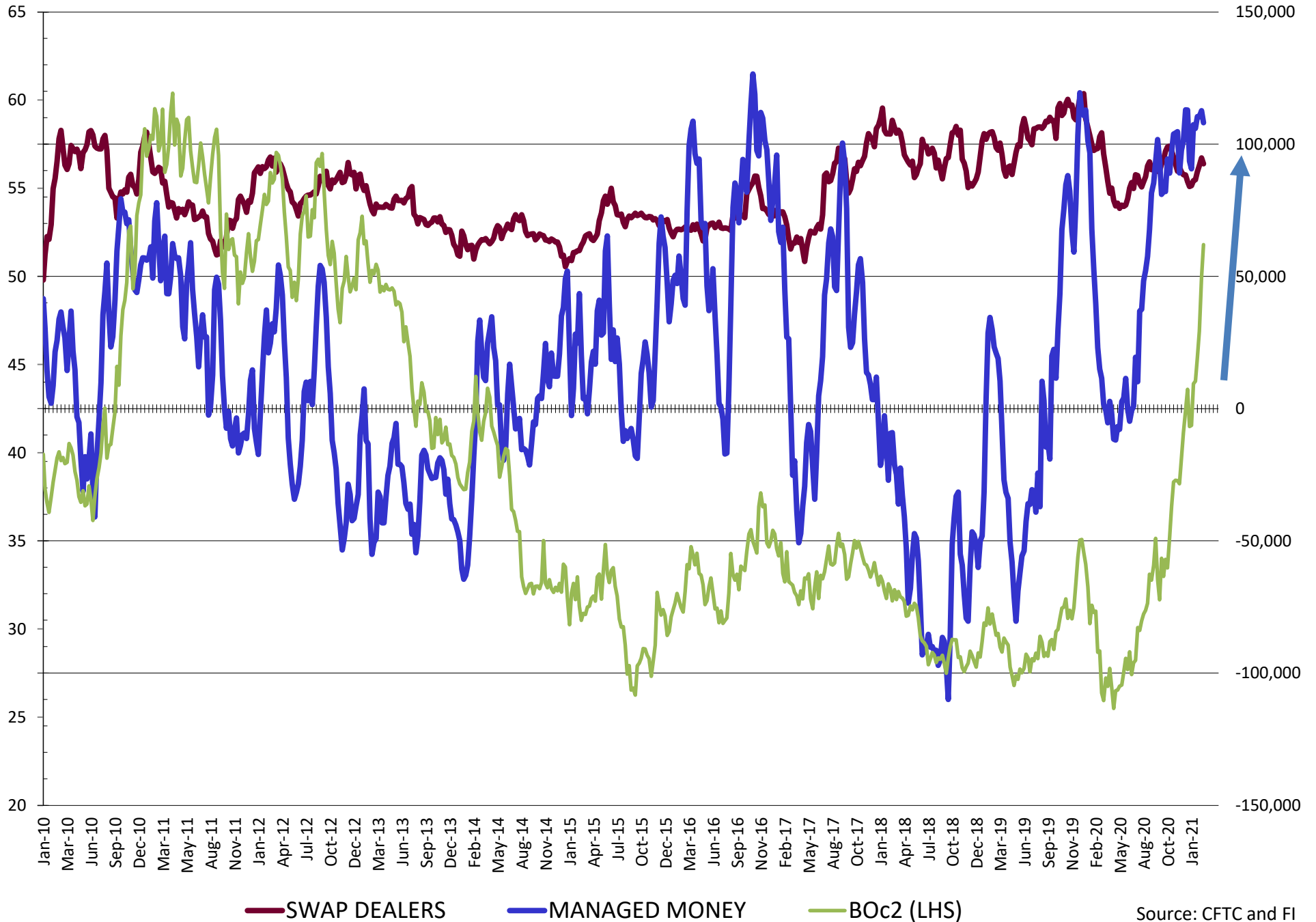


# NET POSITION FUTURES AND OPTIONS OF SWAP AND MANAGED FUNDS IN SOYBEAN MEAL

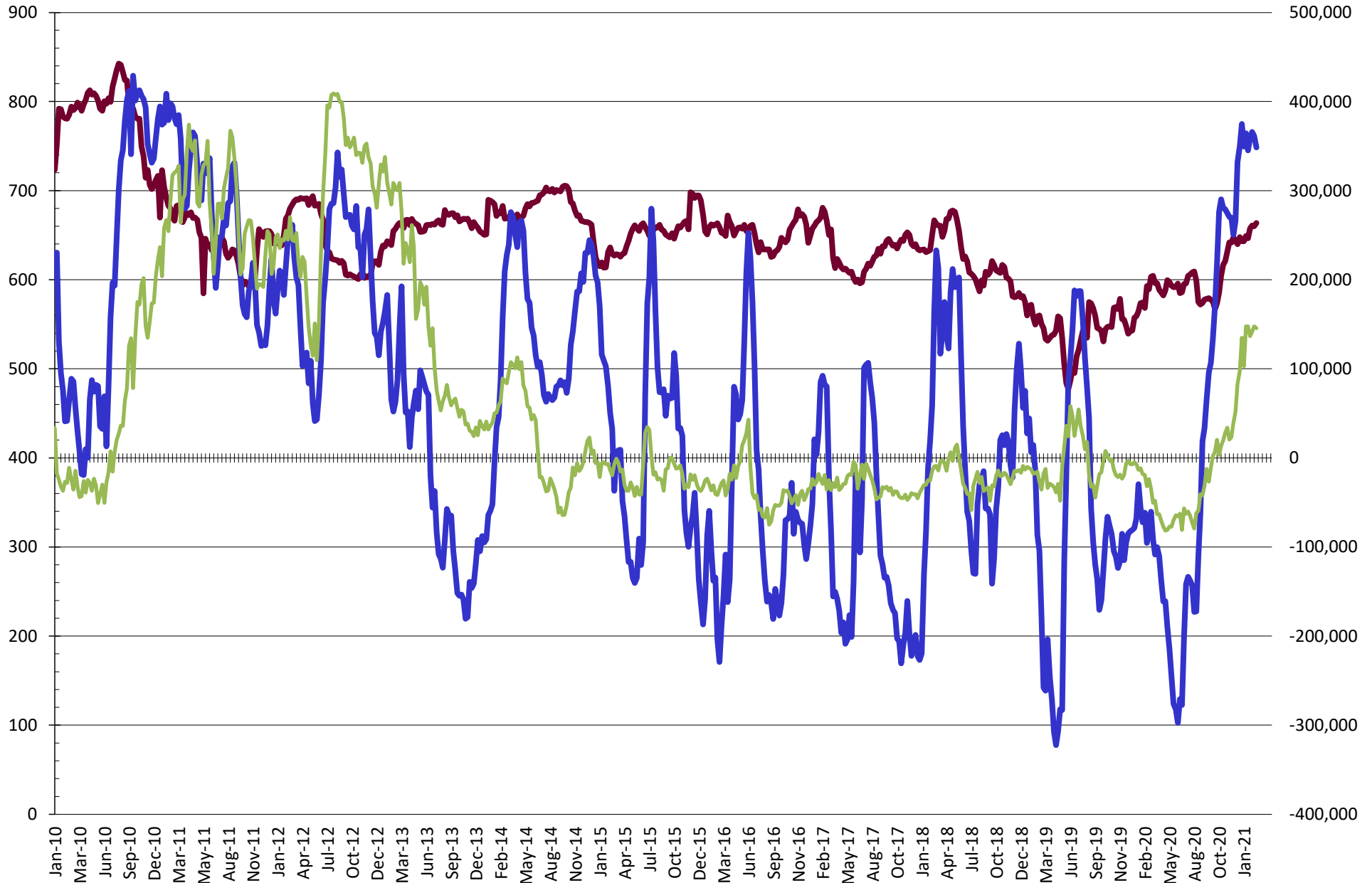




# NET POSITION FUTURES AND OPTIONS OF SWAP AND MANAGED FUNDS IN SOYBEAN OIL

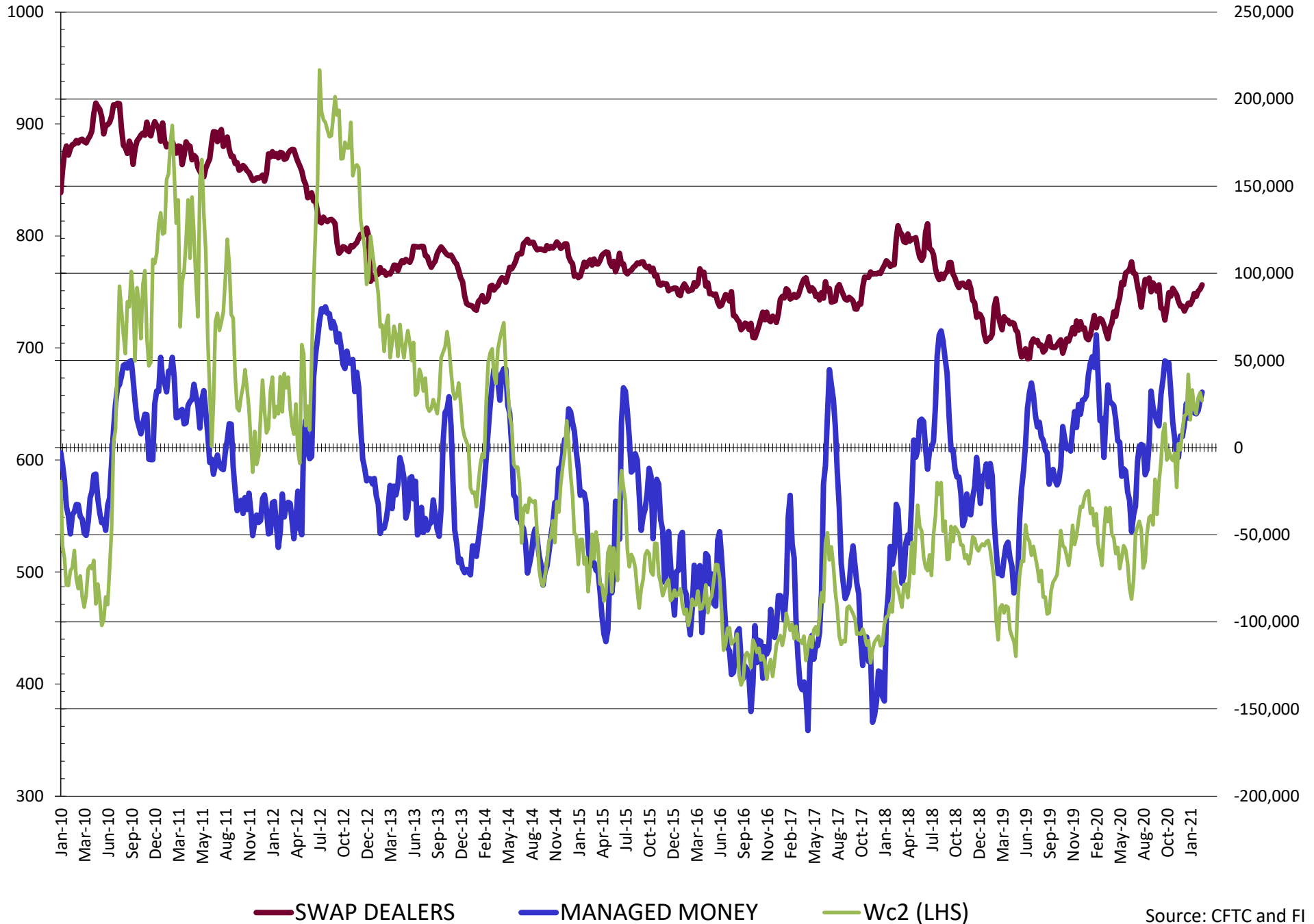


# NET POSITION FUTURES AND OPTIONS OF SWAP AND MANAGED FUNDS IN CORN

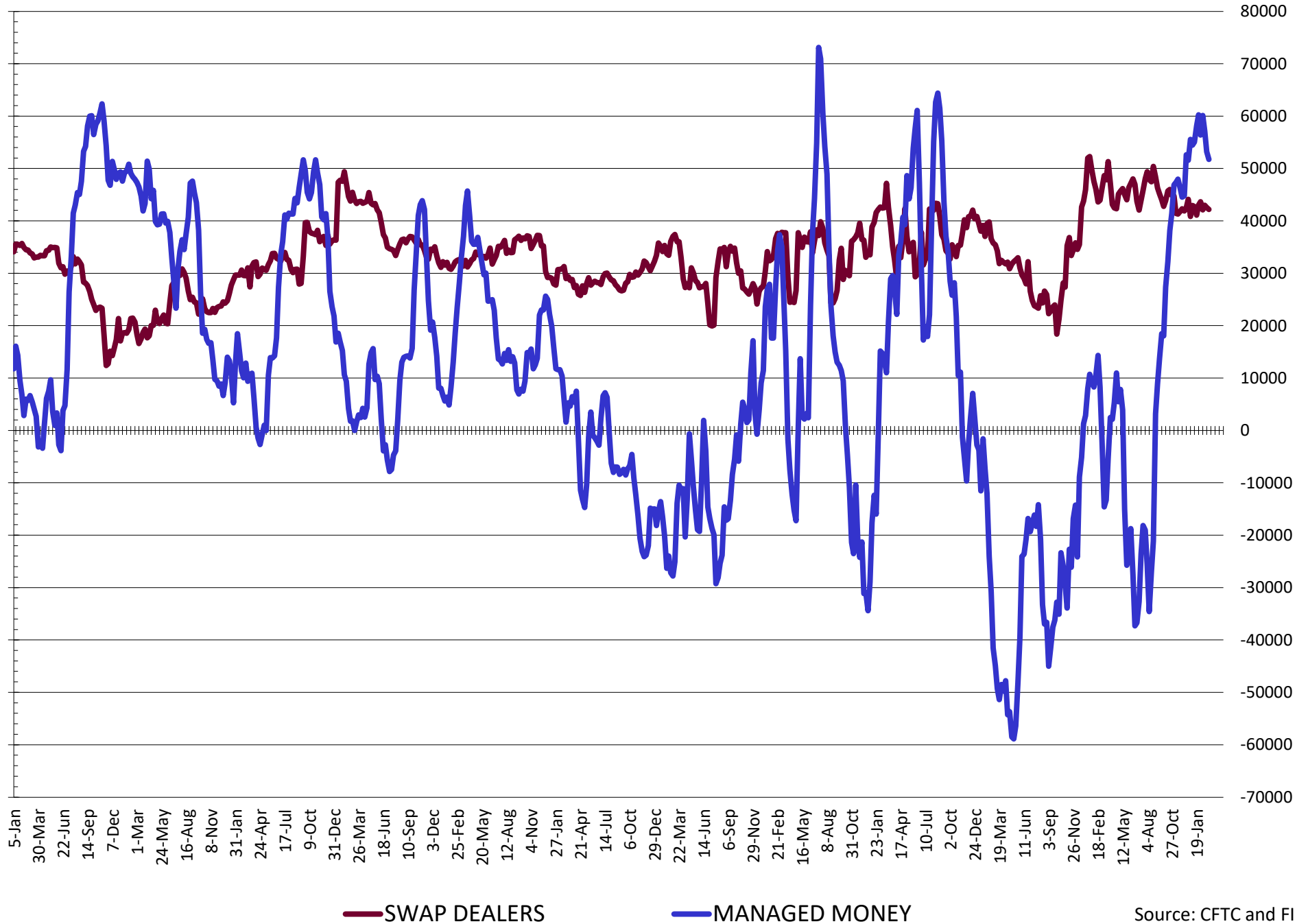


— SWAP DEALERS     
 — MANAGED MONEY     
 — Cc2 (LHS)

# NET POSITION FUTURES AND OPTIONS OF SWAP AND MANAGED FUNDS IN CHICAGO WHEAT

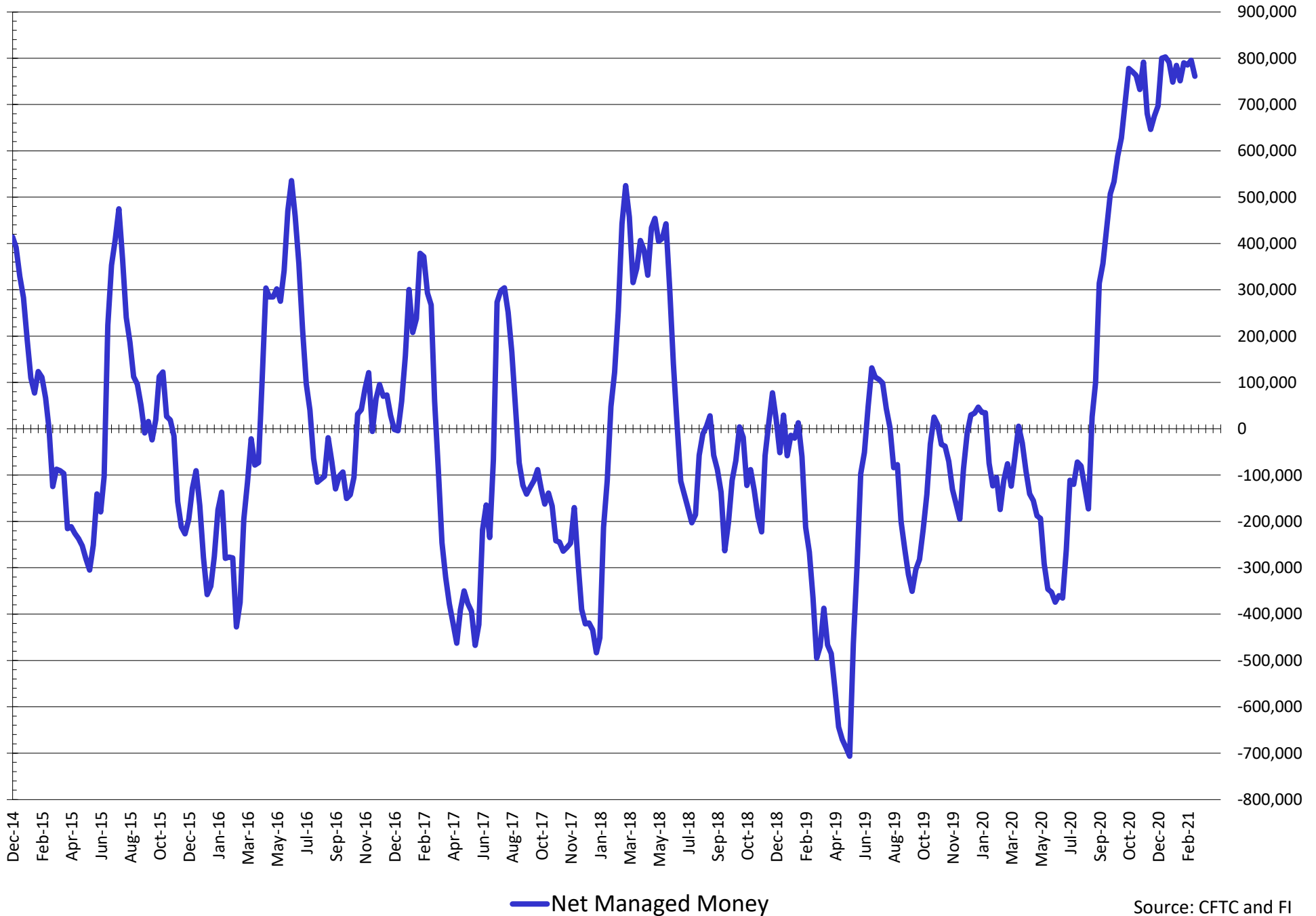


# NET POSITION FUTURES AND OPTIONS OF SWAP AND MANAGED FUNDS IN KANSAS WHEAT



Source: CFTC and FI  
3/5/2021

# NET POSITION FUTURES AND OPTIONS OF SWAP AND MANAGED FUNDS IN COMBINED SRW, HRW, CORN, SOYBEANS, SOYMEAL AND SOYOIL



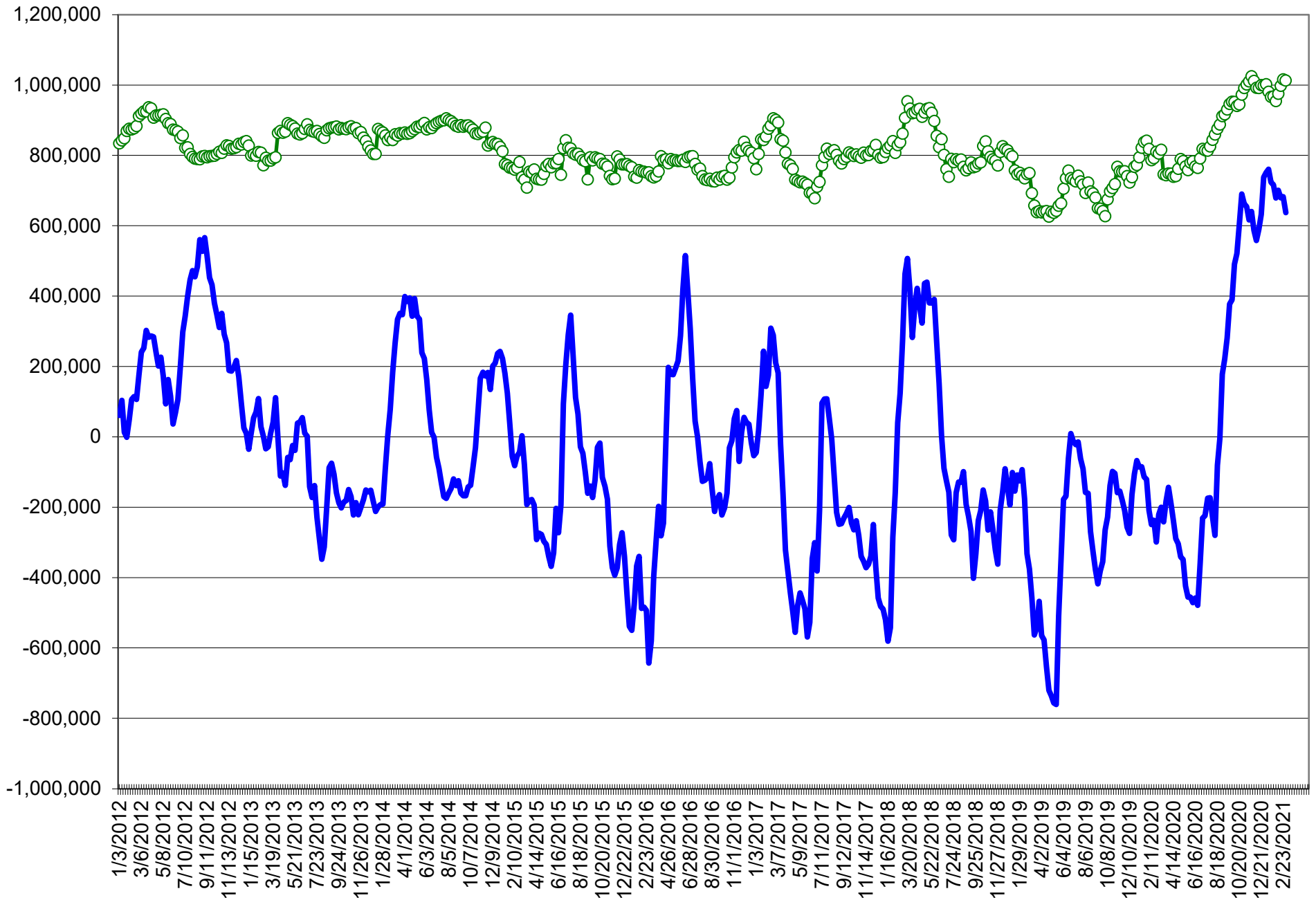
**COMMITMENT OF TRADERS**  
**FUTURES & OPTIONS NET POSITIONS (INDEX BROKEN OUT)**  
**AS OF 03/02/2021**  
(IN THOUSAND CONTRACTS)

	COMMERCIAL				(FUND) NON COMMERCIAL				(SPEC) NON-REPORTABLE			
	2-Mar	23-Feb	16-Feb	9-Feb	2-Mar	23-Feb	16-Feb	9-Feb	2-Mar	23-Feb	16-Feb	9-Feb
	WHEAT											
Chicago	(142.7)	(138.7)	(132.6)	(124.8)	0.4	(4.9)	(5.2)	(7.6)	(14.0)	(13.0)	(11.8)	(10.6)
Kansas City	(96.8)	(101.7)	(102.6)	(103.9)	32.7	29.0	32.2	34.9	(5.1)	2.5	2.2	2.3
Minneapolis	-	-	-	-	-	-	-	-	-	-	-	-
All Wheat	(239.4)	(240.4)	(235.2)	(228.7)	33.1	24.1	27.0	27.3	(19.2)	(10.4)	(9.6)	(8.3)
CORN	(745.0)	(762.8)	(771.2)	(771.4)	348.6	372.8	386.0	386.6	(10.6)	(16.1)	(16.9)	(10.3)
OATS	-	-	-	-	-	-	-	-	-	-	-	-
SOYBEANS	(288.1)	(307.6)	(301.2)	(316.8)	126.5	151.8	141.9	158.4	(6.1)	(8.9)	(2.6)	4.1
SOY OIL	(226.4)	(231.3)	(228.6)	(229.1)	78.7	80.8	75.7	73.8	21.5	21.2	23.0	22.6
SOY MEAL	(166.6)	(172.9)	(166.1)	(174.8)	50.4	53.1	49.0	54.5	29.5	30.2	30.7	37.1

	TOTAL OPEN INTEREST				(INDEX) COMMERCIAL INDEX TRADERS				(INDEX) % NET OF TOTAL OPEN INTEREST			
	2-Mar	23-Feb	16-Feb	9-Feb	2-Mar	23-Feb	16-Feb	9-Feb	2-Mar	23-Feb	16-Feb	9-Feb
	WHEAT											
Chicago	510,549	516,298	561,553	557,908	156.3	156.6	149.6	143.0	30.6%	30.3%	26.6%	25.6%
Kansas City	238,498	243,842	251,963	248,840	69.2	70.2	68.2	66.7	29.0%	28.8%	27.1%	26.8%
Minneapolis	-	-	-	-	-	-	-	-	-	-	-	-
All Wheat	749,047	760,140	813,516	806,748	225.5	226.8	217.8	209.7	30.1%	29.8%	26.8%	26.0%
CORN	2,358,552	2,462,699	2,664,969	2,693,387	406.9	406.1	402.1	395.1	17.3%	16.5%	15.1%	14.7%
OATS	-	-	-	-	-	-	-	-	-	-	-	-
SOYBEANS	1,156,624	1,173,245	1,294,632	1,321,924	167.6	164.7	161.8	154.3	14.5%	14.0%	12.5%	11.7%
SOY OIL	548,774	551,290	626,841	601,413	126.1	129.2	129.9	132.7	23.0%	23.4%	20.7%	22.1%
SOY MEAL	461,010	464,978	497,653	497,713	86.7	89.6	86.4	83.3	18.8%	19.3%	17.4%	16.7%

SOURCE: CFTC & FI

# NET POSITION FUTURES AND OPTIONS OF SPECULATORS AND INDEX FUNDS IN COMBINED SRW, HRW, CORN, SOYBEANS, SOYMEAL AND SOYOIL



Source: CFTC and FI

○ Net Index

— Net Speculator

## Traditional Daily Estimate of Funds 3/2/21

(Neg)-"Short" Pos-"Long"

	Corn	Bean	Chi. Wheat	Meal	Oil
<b>Act.</b>	<b>503.8</b>	<b>223.7</b>	<b>29.9</b>	<b>95.2</b>	<b>124.0</b>
3-Mar	(23.0)	(5.0)	(8.0)	(3.0)	1.0
4-Mar	(3.0)	2.0	(5.0)	(2.0)	5.0
5-Mar	33.0	15.0	4.0	2.0	6.0
8-Mar					
9-Mar					
<b>FI Est. of Futures Only 3/2/21</b>	<b>510.8</b>	<b>235.7</b>	<b>20.9</b>	<b>92.2</b>	<b>136.0</b>
<b>FI Est. Futures &amp; Options</b>	<b>483.5</b>	<b>200.4</b>	<b>33.2</b>	<b>79.9</b>	<b>137.0</b>
Futures only record long "Traditional Funds"	547.7 1/26/2021	280.9 11/10/2020	86.5 8/7/2018	167.5 5/1/2018	160.2 11/1/2016
Futures only record short	(235.0) 6/9/2020	(118.3) 4/30/2019	(130.0) 4/25/2017	(49.5) 3/1/2016	(69.8) 9/18/2018
Futures and options record net long	557.6 1/12/2021	270.9 10/6/2020	64.8 8/7/2012	132.1 5/1/2018	159.2 1/1/2016
Futures and options record net short	(270.6) 4/26/2019	(132.0) 4/30/2019	(143.3) 4/25/2017	(64.1) 3/1/2016	(77.8) 9/18/2018

## Managed Money Daily Estimate of Funds 3/2/21

	Corn	Bean	Chi. Wheat	Meal	Oil
Latest CFTC Fut. Only	330.8	143.3	25.4	64.5	106.1
Latest CFTC F&O	348.5	155.6	31.8	65.4	108.1
	Corn	Bean	Chi. Wheat	Meal	Oil
FI Est. Managed Money F&O	356	168	23	62	120
FI Est. Managed Money F&O	360	181	18	62	129

## Index Funds Latest Positions (as of last Tuesday)

Index Futures & Options	406.9	167.6	156.3	NA	126.1
Change From Previous Week	0.8	3.0	(0.3)	NA	(3.1)

Source: Reuters, CFTC & FI (FI est. are noted with latest date)



# Disclaimer

TO CLIENTS/PROSPECTS OF FUTURES INTERNATIONAL, SEE RISK DISCLOSURE BELOW:

THIS COMMUNICATION IS CONVEYED AS A SOLICITATION FOR ENTERING INTO A DERIVATIVES TRANSACTION.

Any trading recommendations and market or other information to Customer by Futures International (FI), although based upon information obtained from sources believed by FI to be reliable may not be accurate and may be changed without notice to customer. FI makes no guarantee as to the accuracy or completeness of any of the information or recommendations furnished to Customer. Customer understands that FI, its managers, employees and/or affiliates may have a position in commodity futures, options or other derivatives which may not be consistent with the recommendations furnished by FI to Customer.

The risk of trading futures and options and other derivatives involves a substantial risk of loss and is not suitable for all persons. In purchasing an option, the risk is limited to the premium paid, and all commissions and fees involved with the trade. When an option is shorted or written, the writer of the option has unlimited risk with respect to the option written. The use of options strategies such as a straddles and strangles involve multiple option positions and may substantially increase the amount of commissions and fees paid to execute the strategy. Option prices do not necessarily move in tandem with cash or futures prices. Each person must consider whether a particular trade, combination of trades or strategy is suitable for that person's financial means and objectives.

This material may include discussions of seasonal patterns, however, futures prices have already factored in the seasonal aspects of supply and demand, and seasonal patterns are no indication of future market trends. Finally, past performance is not indicative of future results.

This communication may contain links to third party websites which are not under the control of FI and FI is not responsible for their content. Products and services are offered only in jurisdictions where solicitation and sale are lawful, and in accordance with applicable laws and regulations in each such jurisdiction.