

NATIONAL OILSEED PROCESSORS ASSOCIATION

	CRUSH		OIL STOCKS	
		000 BU.		000 LBS.
ILLINOIS		22298		246574
	*	22554		219630
	**	19388		259541
INDIANA, KENTUCKY,		43120		342901
OHIO, MICHIGAN	*	44379		340958
PENNSYLVANIA	**	37728		403841
SOUTHEAST		22210		133802
	*	22814		133377
	**	20684		157949
SOUTHWEST		36726		345558
	*	37577		302008
	**	35158		271329
IOWA		36369		405886
	*	37014		406332
	**	32766		283611
MINNESOTA, NORTH		20294		83110
DAKOTA, SOUTH	*	20907		85028
DAKOTA, MONTANA	**	19186		71822
TOTALS		181018		1557830
	*	185245		1487332
	**	164909		1448093

MEAL:	PRODUCED		YIELD	EXPORTS
	(TONS)			
	4281854		47.31	1081653
*	4348710		46.95	945835
**	3893274		47.22	868769
OIL:	PRODUCED			
	2104975		11.63	
*	2161851		11.67	
**	1901493		11.53	

CAPACITY FIGURES ARE UPDATED QUARTERLY

* Figures for previous month.

** Figures for comparable month a year ago.

Source: Reuters and FI

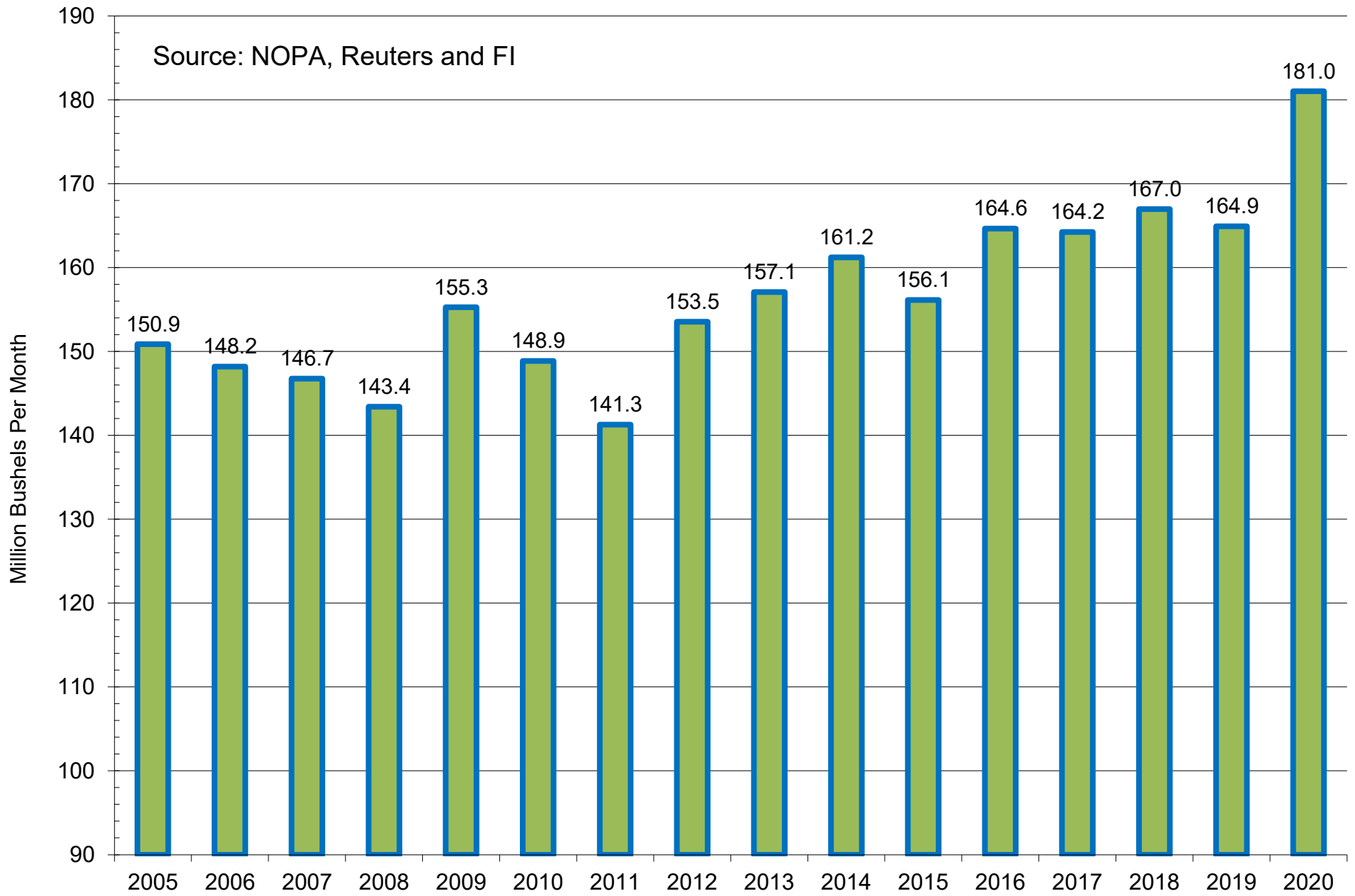
NOPA CRUSH REPORT

	Actual	Trade	Actual	Sep-20	Aug-20	Oct-19
	Oct-20	Est*	less Trade			
Crush- mil bu	181.0	177.1	3.9	161.5	165.1	175.4
Oil Stocks-mil lbs	1558	1448	110	1433	1519	1423
Oil Yield -lbs/bu	11.63	na	na	11.60	11.60	11.57
Meal Exports -000 tons	1082	na	na	991	755	895
Meal Yield -lbs/bu	47.31	na	na	46.92	47.06	46.92

Source: Reuters and FI

NOPA US Monthly Crush

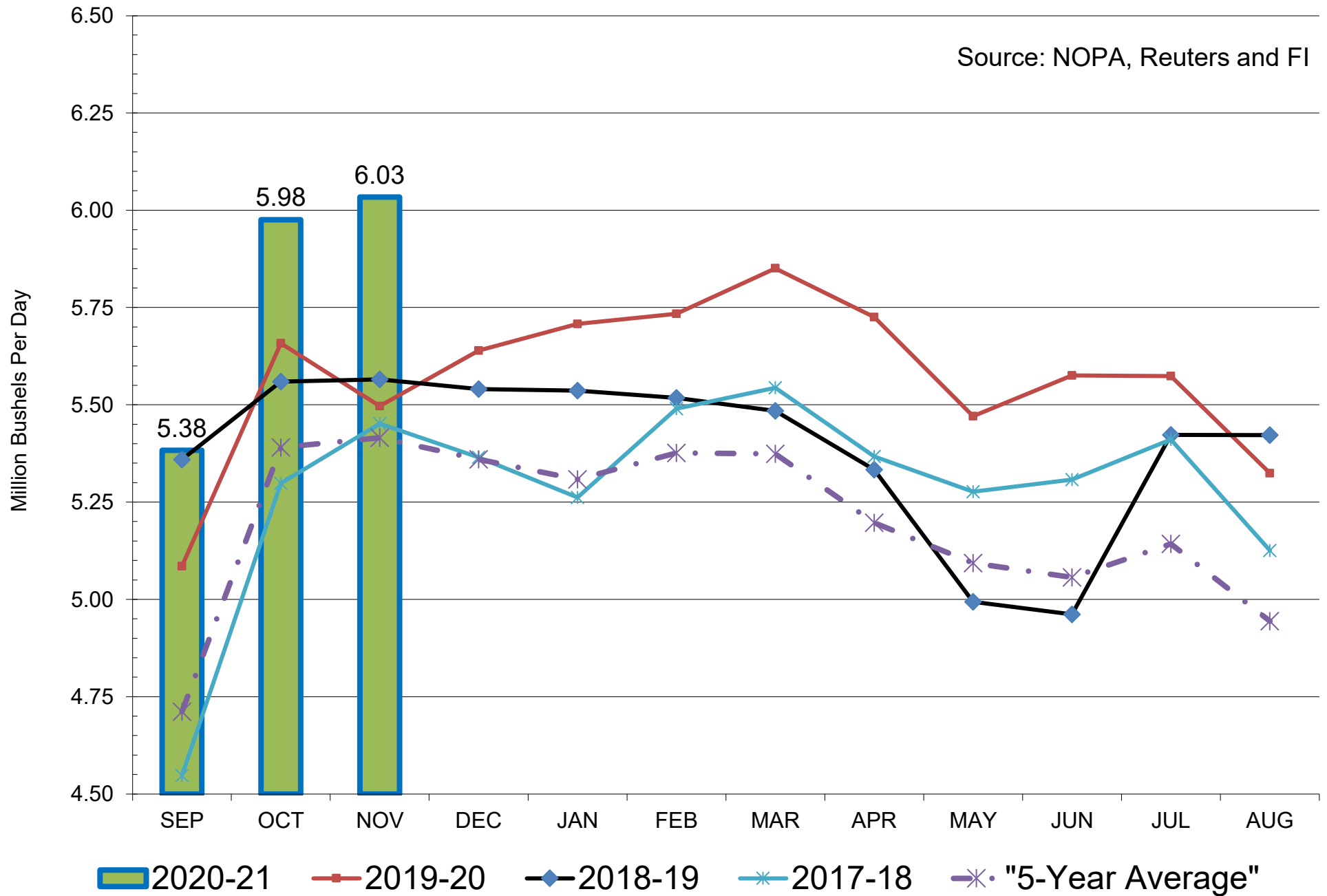
Source: NOPA, Reuters and FI



■ NOPA US Monthly Crush as of November

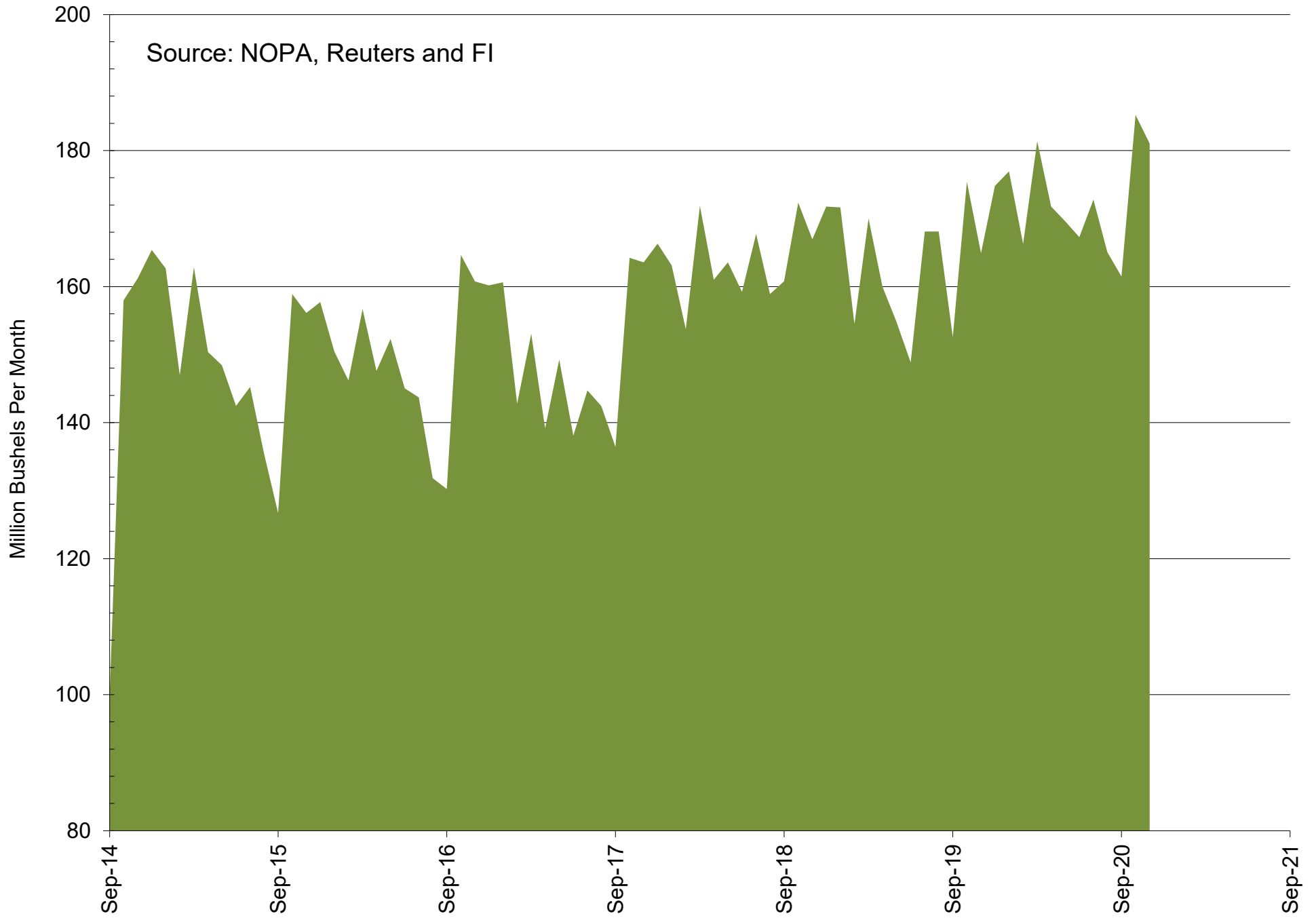
NOPA US Monthly Crush, Daily Adjusted

Source: NOPA, Reuters and FI



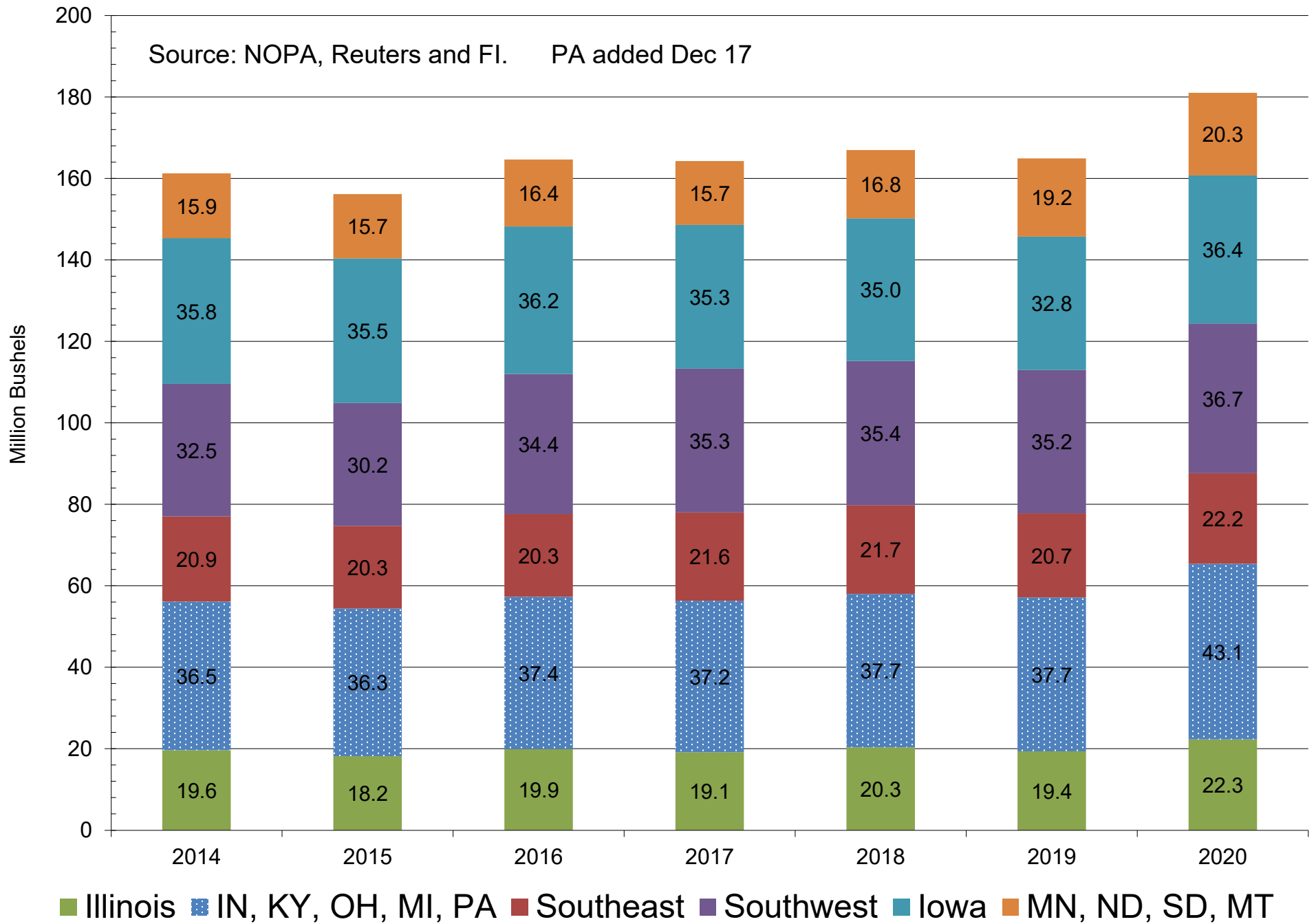
NOPA US Monthly Crush

Source: NOPA, Reuters and FI



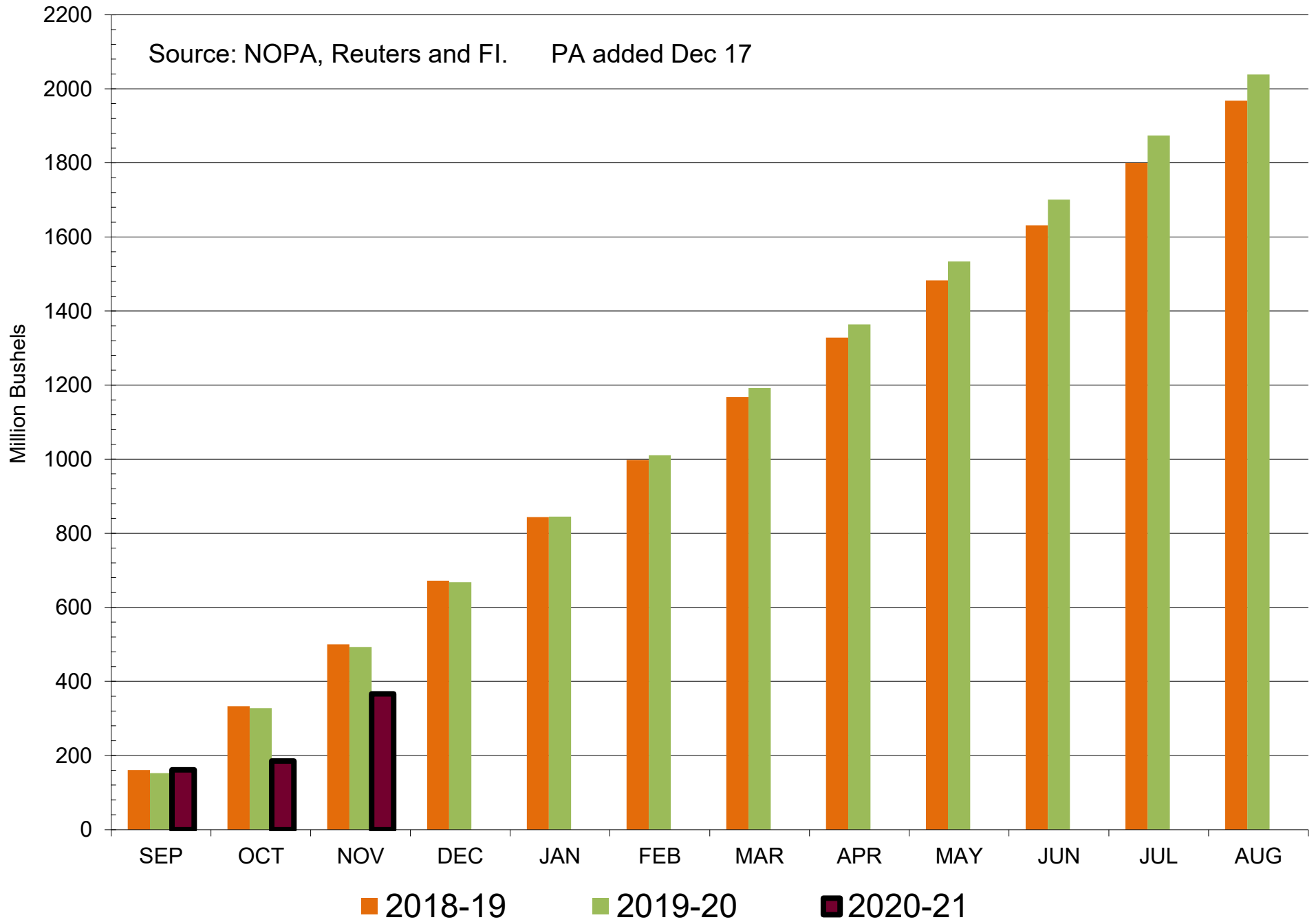
NOPA US Crush By Region - Latest Month

Source: NOPA, Reuters and FI. PA added Dec 17

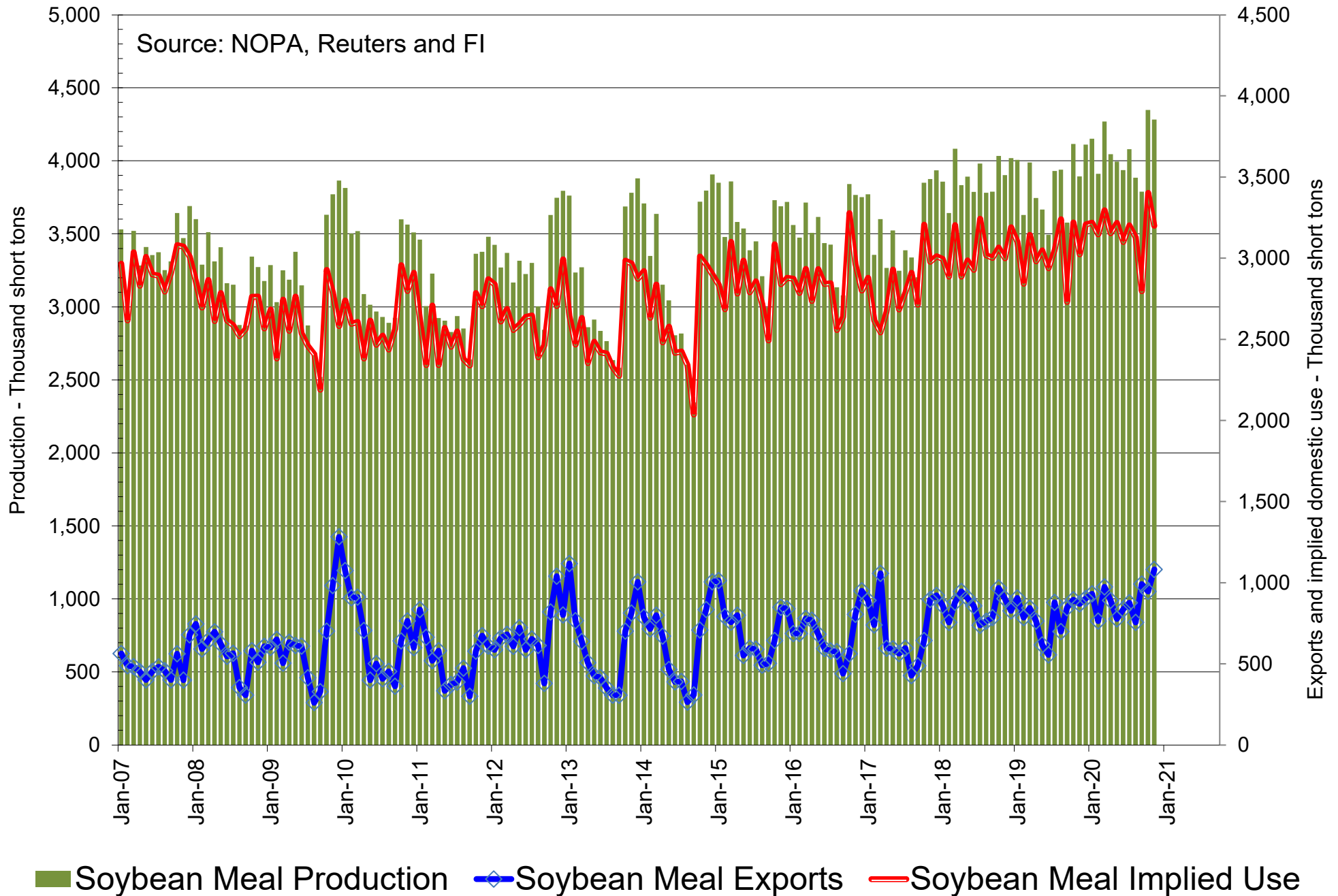


Cumulative NOPA US Crush

Source: NOPA, Reuters and FI. PA added Dec 17

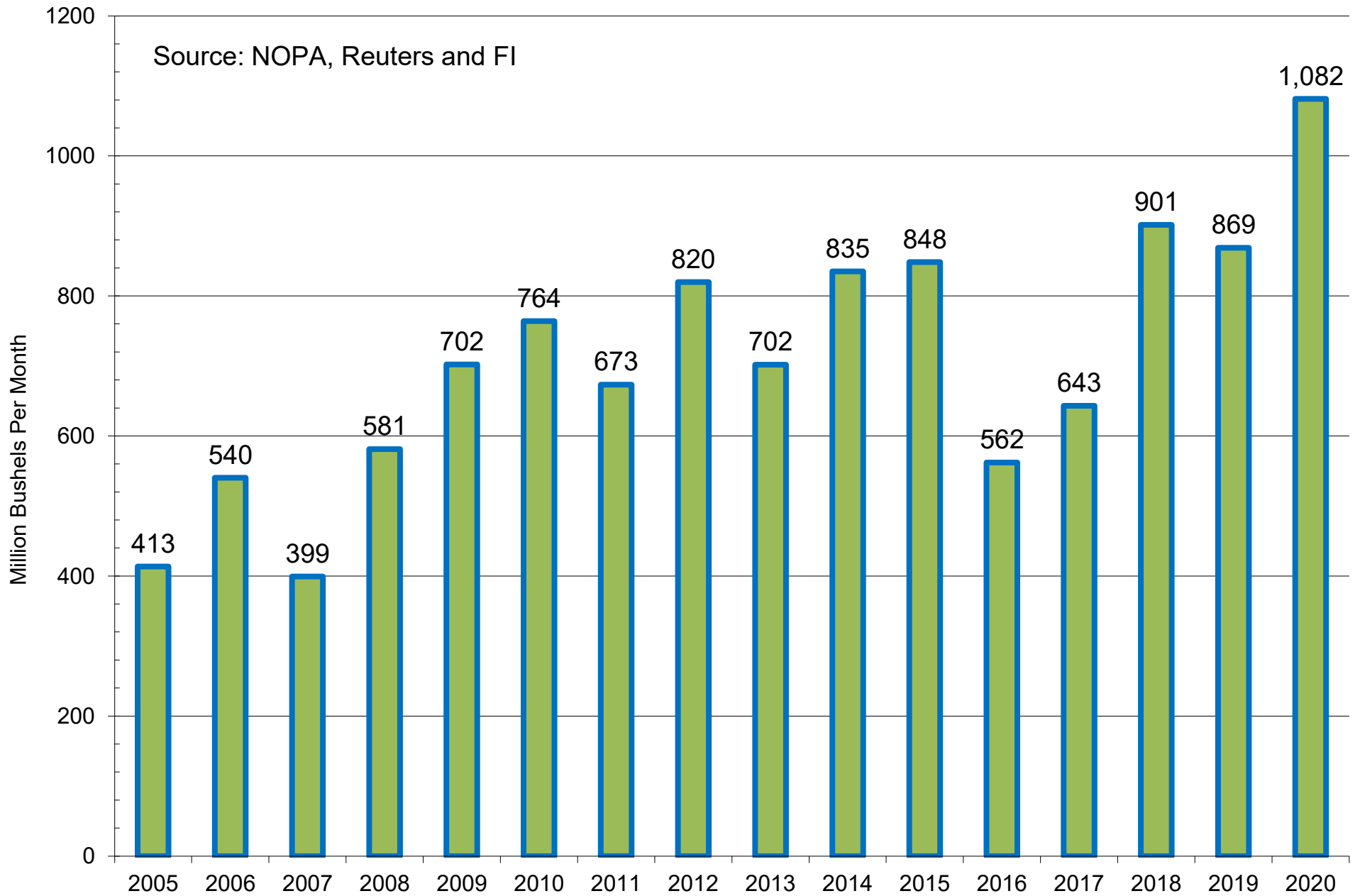


NOPA US Monthly Soybean Meal Production and Exports



NOPA US Monthly Soybean Meal Exports

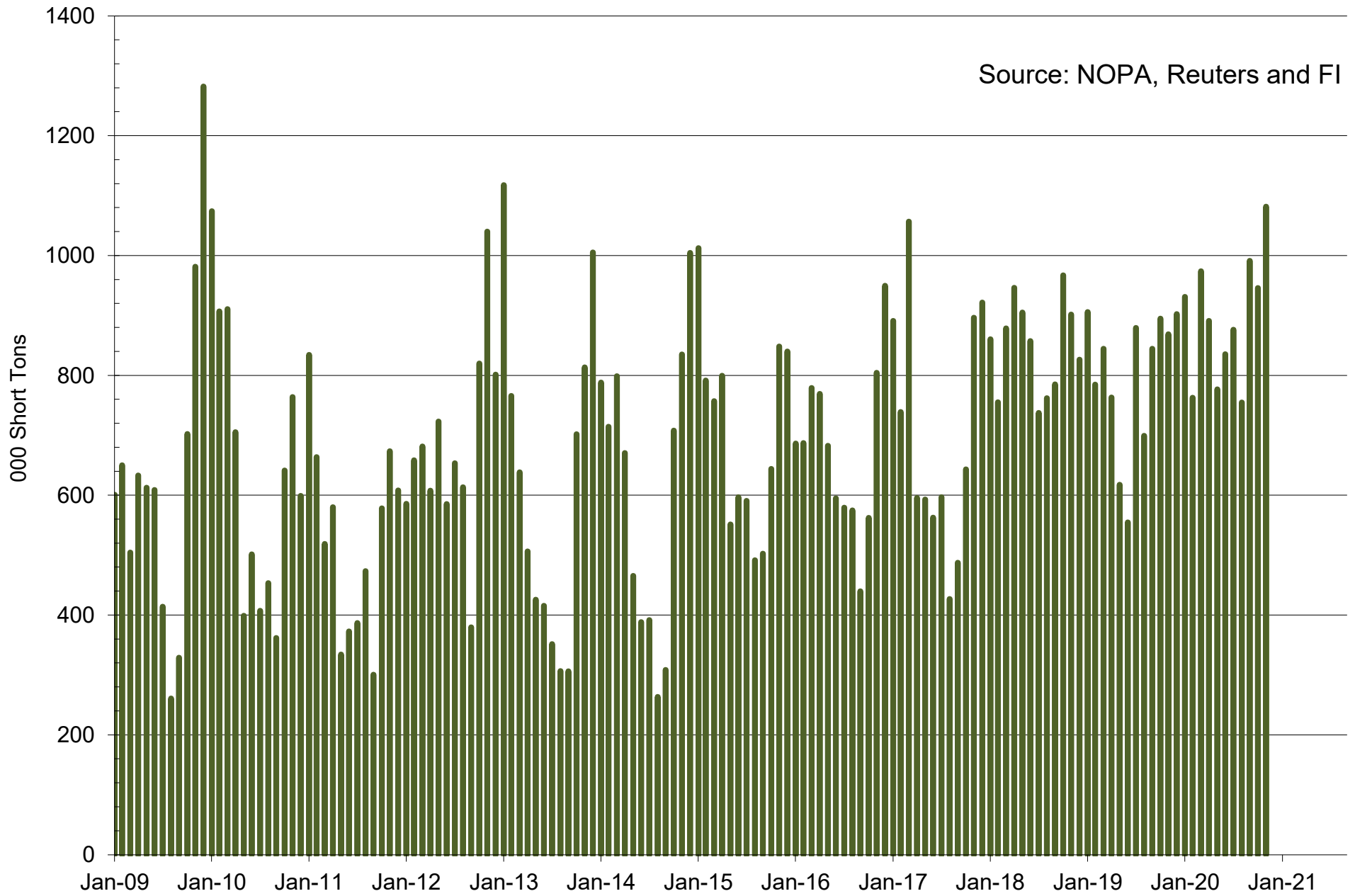
Source: NOPA, Reuters and FI



■ NOPA US Monthly Soybean Meal Exports as of November

NOPA US Monthly Soybean Meal Exports

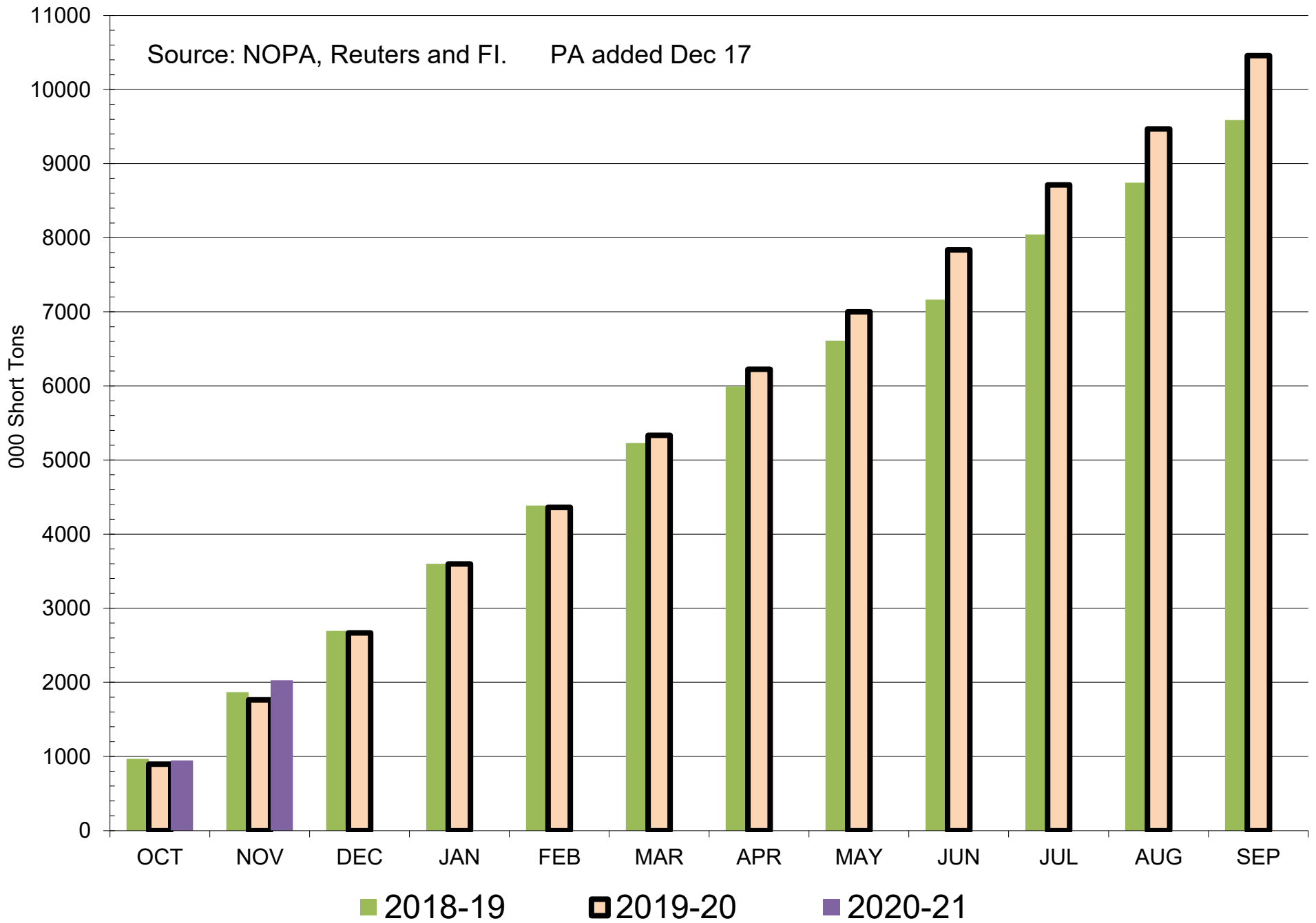
Source: NOPA, Reuters and FI



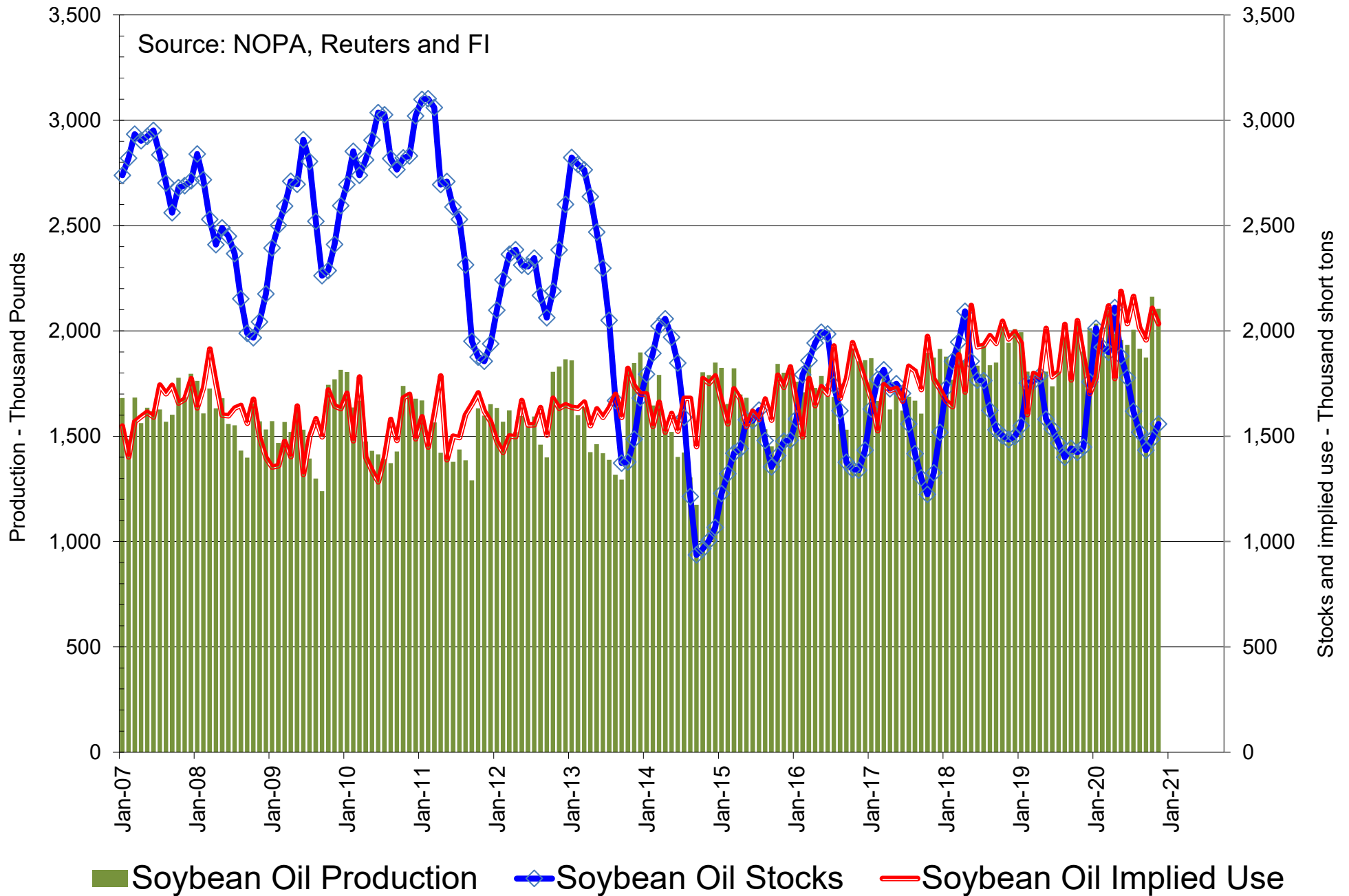
■ NOPA US Monthly Soybean Meal Exports as of November Exports

Cumulative NOPA US Soybean Meal Exports

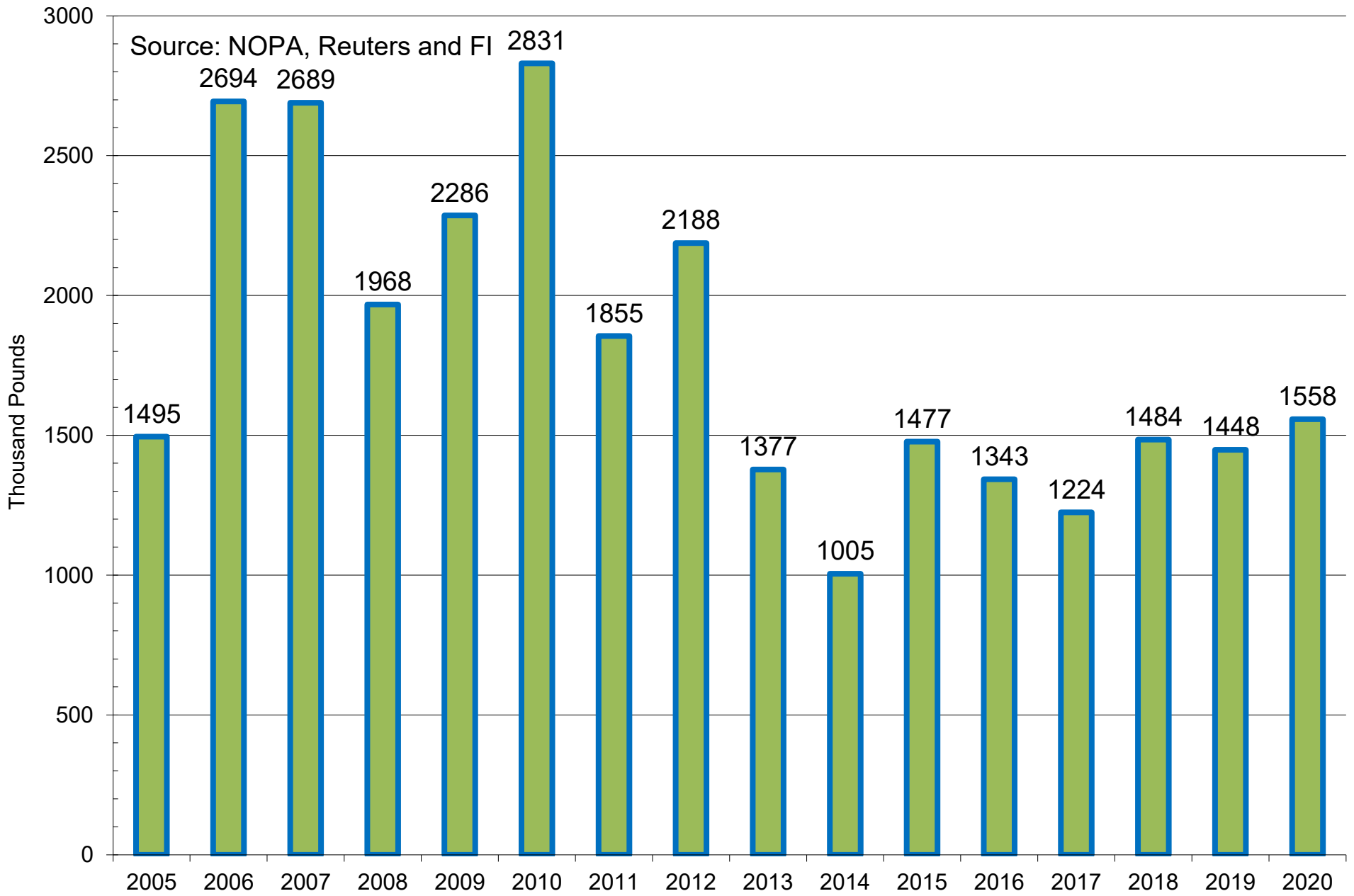
Source: NOPA, Reuters and FI. PA added Dec 17



NOPA US Monthly Soybean Oil Production, Stocks and Implied Use



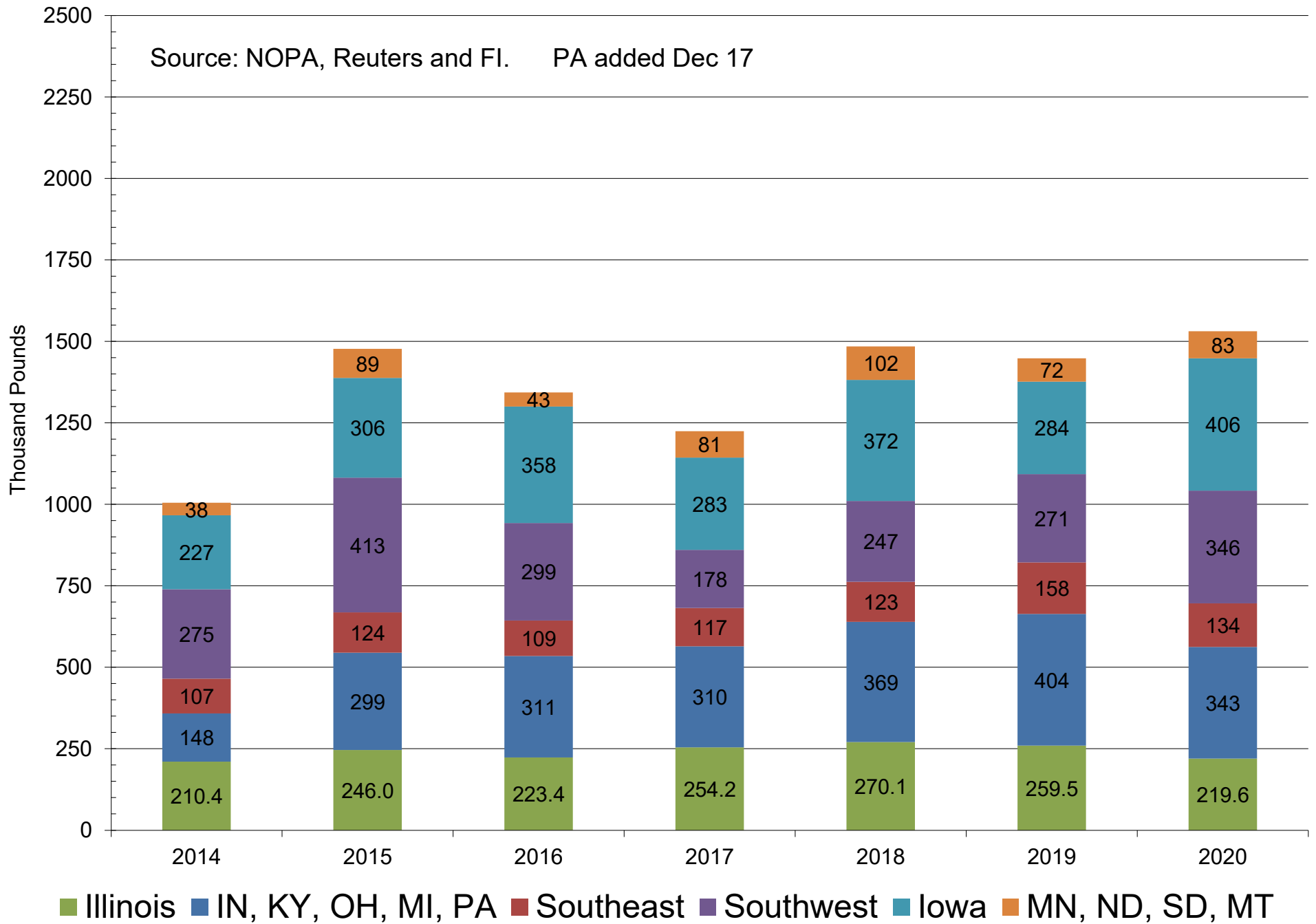
NOPA US Monthly Soybean Oil Stocks



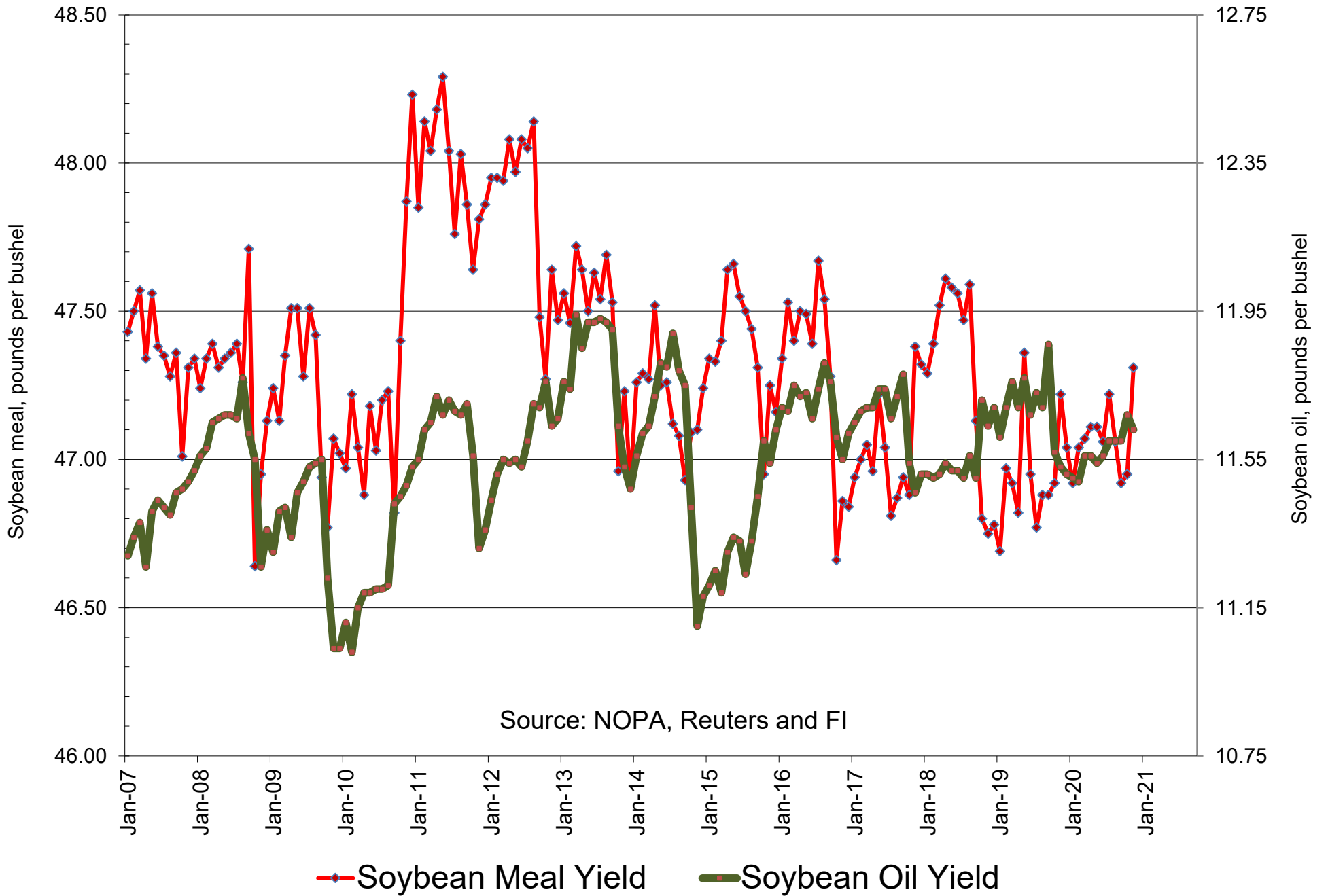
■ NOPA US Monthly Soybean Oil Stocks as of November 1

NOPA US Soybean Oil Stocks By Region - Latest Month

Source: NOPA, Reuters and FI. PA added Dec 17

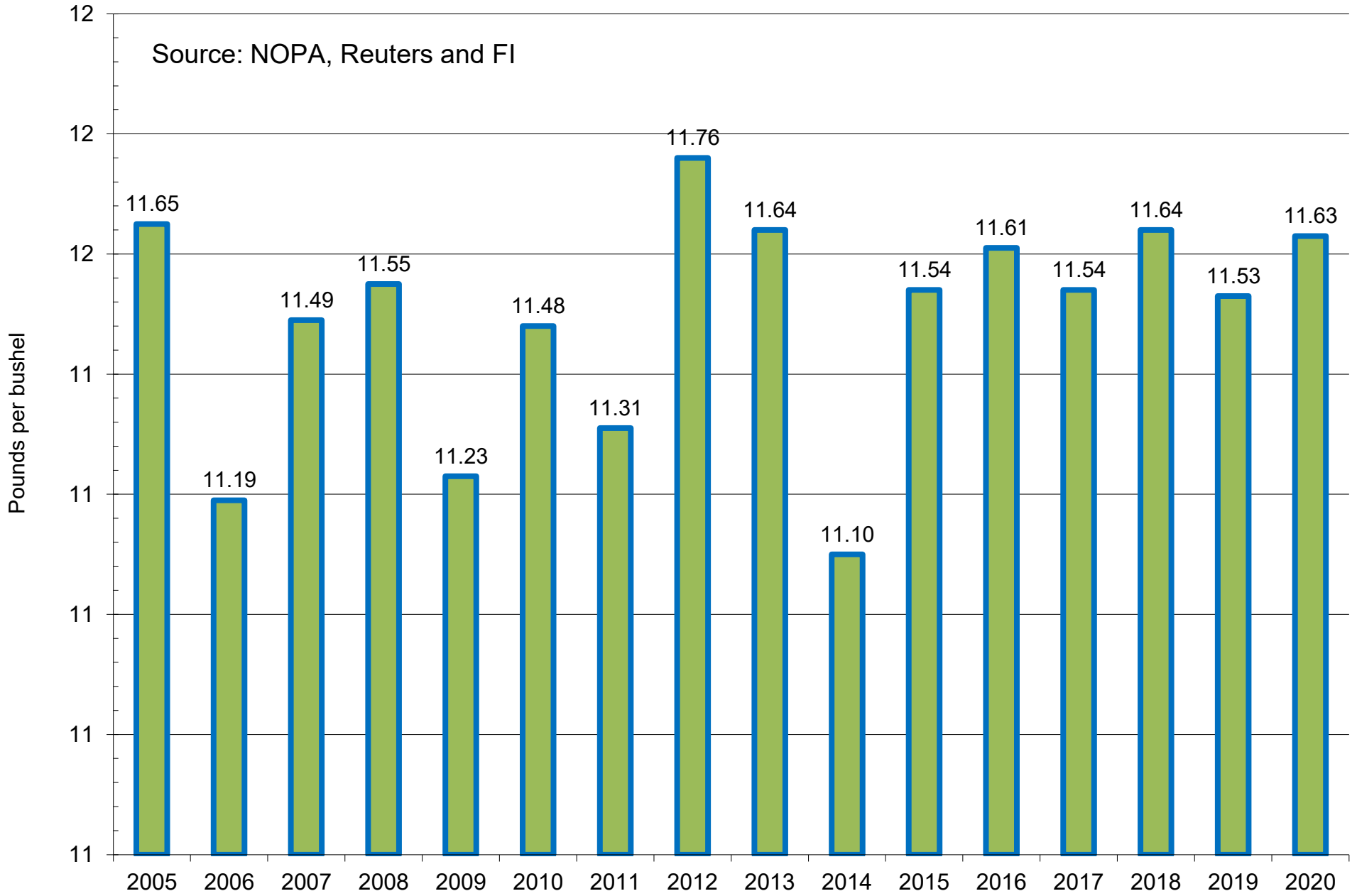


NOPA US Product Yields



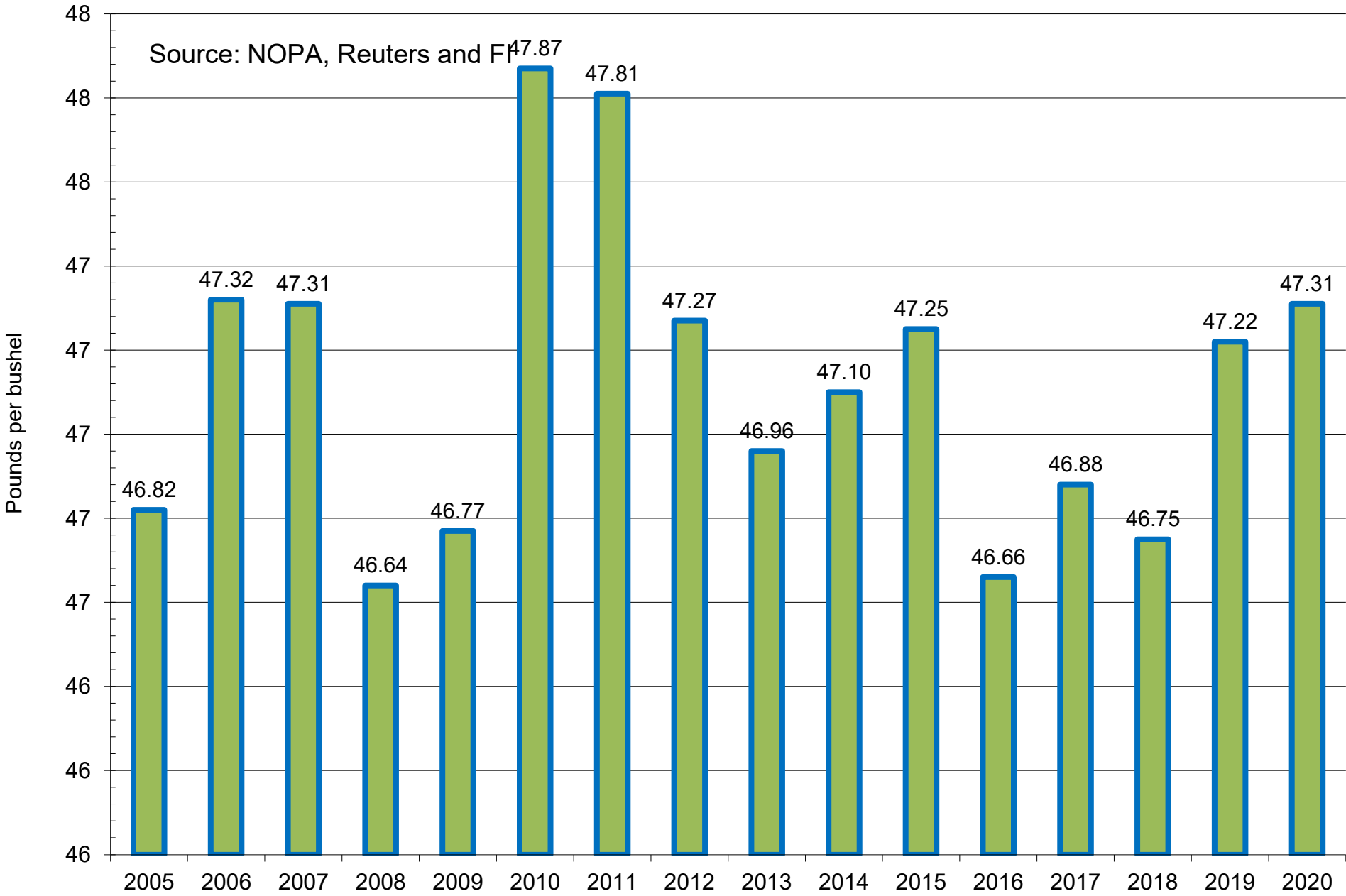
NOPA US Monthly Soybean Oil Yield

Source: NOPA, Reuters and FI



■ NOPA US Monthly Soybean Oil Yield for November

NOPA US Monthly Soybean Meal Yield



■ NOPA US Monthly Soybean Meal Yield for November

Disclaimer

TO CLIENTS/PROSPECTS OF FUTURES INTERNATIONAL, SEE RISK DISCLOSURE BELOW:

THIS COMMUNICATION IS CONVEYED AS A SOLICITATION FOR ENTERING INTO A DERIVATIVES TRANSACTION.

Any trading recommendations and market or other information to Customer by Futures International (FI), although based upon information obtained from sources believed by FI to be reliable may not be accurate and may be changed without notice to customer. FI makes no guarantee as to the accuracy or completeness of any of the information or recommendations furnished to Customer. Customer understands that FI, its managers, employees and/or affiliates may have a position in commodity futures, options or other derivatives which may not be consistent with the recommendations furnished by FI to Customer.

The risk of trading futures and options and other derivatives involves a substantial risk of loss and is not suitable for all persons. In purchasing an option, the risk is limited to the premium paid, and all commissions and fees involved with the trade. When an option is shorted or written, the writer of the option has unlimited risk with respect to the option written. The use of options strategies such as a straddles and strangles involve multiple option positions and may substantially increase the amount of commissions and fees paid to execute the strategy. Option prices do not necessarily move in tandem with cash or futures prices. Each person must consider whether a particular trade, combination of trades or strategy is suitable for that person's financial means and objectives.

This material may include discussions of seasonal patterns, however, futures prices have already factored in the seasonal aspects of supply and demand, and seasonal patterns are no indication of future market trends. Finally, past performance is not indicative of future results.

This communication may contain links to third party websites which are not under the control of FI and FI is not responsible for their content. Products and services are offered only in jurisdictions where solicitation and sale are lawful, and in accordance with applicable laws and regulations in each such jurisdiction.