

US Weekly Petroleum Status Report - Ethanol

	Ethanol Production		Change		Ethanol Stocks		Change		Days of Ethanol
	Mbbl	Last Week	Last Year	Mbbl	Last Week	Last Year			
9/4/2020	941	19	-8.0%	19,993	(889)	-11.1%	22.2		
9/11/2020	926	(15)	-7.7%	19,798	(195)	-14.8%	21.6		
9/18/2020	906	(20)	-3.9%	19,997	199	-11.1%	21.9		
9/25/2020	881	(25)	-8.0%	19,691	(306)	-15.2%	22.7		
10/2/2020	923	42	-4.2%	19,672	(19)	-7.3%	21.3		
10/9/2020	937	14	-3.5%	20,008	336	-9.3%	21.0		
10/16/2020	913	(24)	-8.3%	19,721	(287)	-7.7%	21.9		
10/23/2020	941	28	-6.3%	19,601	(120)	-7.1%	21.0		

Source: EIA and FI

US Weekly Ethanol By PADD

	23-Oct	16-Oct		Weekly	4-Week	YOY
Ethanol Stocks	2020	2020	Change	Percent	Percent	Percent
Total Stocks	19601	19721	(120)	-0.6%	-0.4%	-7.1%
East Coast PADD 1	6632	6384	248	3.9%	2.2%	0.1%
Midwest PADD 2	6122	6221	(99)	-1.6%	-6.4%	-13.2%
Gulf Coast PADD 3	3522	3607	(85)	-2.4%	14.0%	-15.0%
Rocky Mt. PADD 4	376	368	8	2.2%	-3.6%	12.9%
West Coast PADD 5	2949	3141	(192)	-6.1%	-6.9%	0.2%
Plant Production	23-Oct	16-Oct		Weekly	4-Week	YOY
	2020	2020	Change	Percent	Percent	Percent
Total Production	941	913	28	3.1%	2.0%	-6.3%
East Coast PADD 1	10	13	(3)	-23.1%	66.7%	
Midwest PADD 2	896	871	25	2.9%	1.7%	-3.0%
Gulf Coast PADD 3	16	9	7	77.8%	-5.9%	
Rocky Mt. PADD 4	10	10	0	0.0%	0.0%	
West Coast PADD 5	9	10	(1)	-10.0%	0.0%	

Source: EIA and FI

Source: EIA and FI

Page 1	Weekly Ethanol Snapshot	Page 12	Net Ethanol Blend
Page 2	Ethanol Table	Page 13	Selected Commodities Indexed vs. WTI \$
Page 3	Production Chart	Page 14	Ethanol-RBOB
Page 4	Production and Stocks	Page 15	Ethanol Crush with implied costs
Page 5	Ethanol Stocks	Page 16	Chicago Ethanol with straight corn crush
Page 6	PADD Ethanol Stocks	Page 17	CBOT corn crush with IL DDGS
Page 7	Gasoline Ethanol Stocks	Page 18	Disclaimer
Page 8	Gasoline Supplied		
Page 9	Ethanol Imports		
Page 10	US Annualized Implied Corn Use		
Page 11	Net Ethanol Consumption		

Source: Reuters, Bloomberg, EIA, CME and FI

Created by Terry Reilly

Futures International

treilly@futures-int.com

US Weekly Petroleum Status Report

	Ethanol Production 000 Barrels Per Day	Change from Last Week	Change from Last Month	Change from Last Year	Ethanol Stocks 000 Barrels	Change from Last Week	Change from Last Month	Change from Last Year	Days of Ethanol Inventory
10/4/2019	963	5	-5.9%	-7.4%	21,224	(1995)	-5.7%	-11.6%	24.1
10/11/2019	971	8	-3.2%	-4.0%	22,061	837	-5.1%	-8.6%	21.9
10/18/2019	996	25	5.6%	-2.7%	21,364	(697)	-5.0%	-10.6%	22.1
10/25/2019	1004	8	4.8%	-5.2%	21,099	(265)	-9.1%	-7.2%	21.3
11/1/2019	1014	10	5.3%	-5.1%	21,874	775	3.1%	-5.5%	20.8
11/8/2019	1030	16	6.1%	-3.5%	20,985	(889)	-4.9%	-10.8%	21.2
11/15/2019	1033	3	3.7%	-0.9%	20,514	(471)	-4.0%	-10.0%	20.3
11/22/2019	1059	26	5.5%	1.0%	20,277	(237)	-3.9%	-11.6%	19.4
11/29/2019	1060	1	4.5%	-0.8%	20,639	362	-5.6%	-10.4%	19.1
12/6/2019	1072	12	4.1%	2.5%	21,815	1176	4.0%	-4.7%	19.3
12/13/2019	1064	(8)	3.0%	1.7%	21,798	(17)	6.3%	-8.7%	20.5
12/20/2019	1083	19	2.3%	3.9%	21,469	(329)	5.9%	-7.2%	20.1
12/27/2019	1066	(17)	0.6%	5.4%	21,034	(435)	1.9%	-9.2%	20.1
1/3/2020	1062	(4)	-0.9%	6.2%	22,462	1428	3.0%	-3.4%	19.8
1/10/2020	1095	33	2.9%	4.2%	23,006	544	5.5%	-1.5%	20.5
1/17/2020	1049	(46)	-3.1%	1.7%	24,031	1025	11.9%	2.3%	21.9
1/24/2020	1029	(20)	-3.5%	1.7%	24,244	213	15.3%	1.1%	23.4
1/31/2020	1081	52	1.8%	11.8%	23,474	(770)	4.5%	-2.0%	22.4
2/7/2020	1033	(48)	-5.7%	0.4%	24,358	884	5.9%	3.8%	22.7
2/14/2020	1040	7	-0.9%	4.4%	24,781	423	3.1%	3.6%	23.4
2/21/2020	1054	14	2.4%	2.5%	24,718	(63)	2.0%	4.3%	23.5
2/28/2020	1079	25	-0.2%	5.4%	24,964	246	6.3%	2.9%	22.9
3/6/2020	1044	(35)	1.1%	3.9%	24,334	(630)	-0.1%	2.5%	23.9
3/13/2020	1035	(9)	-0.5%	3.1%	24,598	264	-0.7%	0.8%	23.5
3/20/2020	1005	(30)	-4.6%	3.1%	24,140	(458)	-2.3%	-1.3%	24.5
3/27/2020	840	(165)	-22.2%	-15.9%	25,717	1577	3.0%	7.2%	28.7
4/3/2020	672	(168)	-35.6%	-32.9%	27,091	1374	11.3%	16.8%	38.3
4/10/2020	570	(102)	-44.9%	-43.9%	27,469	378	11.7%	21.1%	47.5
4/17/2020	563	(7)	-44.0%	-46.3%	27,689	220	14.7%	21.7%	48.8
4/24/2020	537	(26)	-36.1%	-47.6%	26,337	(1352)	2.4%	16.0%	51.6
5/1/2020	598	61	-11.0%	-42.3%	25,612	(725)	-5.5%	14.0%	44.0
5/8/2020	617	19	8.2%	-41.3%	24,190	(1422)	-11.9%	8.7%	41.5
5/15/2020	663	46	17.8%	-38.1%	23,626	(564)	-14.7%	0.9%	36.5
5/22/2020	724	61	34.8%	-31.5%	23,176	(450)	-12.0%	2.4%	32.6
5/29/2020	765	41	27.9%	-26.7%	22,476	(700)	-12.2%	-0.3%	30.3
6/5/2020	837	72	35.7%	-23.6%	21,802	(674)	-9.9%	0.0%	26.9
6/12/2020	841	4	26.8%	-22.2%	21,346	(456)	-9.7%	-1.2%	25.9
6/19/2020	893	52	23.3%	-16.7%	21,034	(312)	-9.2%	-2.5%	23.9
6/26/2020	900	7	17.6%	-16.7%	20,164	(870)	-10.3%	-11.7%	23.4
7/3/2020	914	14	9.2%	-12.7%	20,620	456	-5.4%	-10.4%	22.1
7/10/2020	931	17	10.7%	-12.7%	20,608	(12)	-3.5%	-11.8%	22.1
7/17/2020	908	(23)	1.7%	-12.6%	19,801	(807)	-5.9%	-16.4%	22.7
7/24/2020	958	50	6.4%	-7.1%	20,272	471	0.5%	-17.1%	20.7
7/31/2020	931	(27)	1.9%	-10.5%	20,346	74	-1.3%	-12.0%	21.8
8/7/2020	918	(13)	-1.4%	-12.2%	19,750	(596)	-4.2%	-17.3%	22.2
8/14/2020	926	8	2.0%	-9.5%	20,270	520	2.4%	-13.3%	21.3
8/21/2020	931	5	-2.8%	-10.3%	20,409	139	0.7%	-11.2%	21.8
8/28/2020	922	(9)	-1.0%	-9.0%	20,882	473	2.6%	-12.3%	22.1
9/4/2020	941	19	2.5%	-8.0%	19,993	(889)	1.2%	-11.1%	22.2
9/11/2020	926	(15)	0.0%	-7.7%	19,798	(195)	-2.3%	-14.8%	21.6
9/18/2020	906	(20)	-2.7%	-3.9%	19,997	199	-2.0%	-11.1%	21.9
9/25/2020	881	(25)	-4.4%	-8.0%	19,691	(306)	-5.7%	-15.2%	22.7
10/2/2020	923	42	-1.9%	-4.2%	19,672	(19)	-1.6%	-7.3%	21.3
10/9/2020	937	14	1.2%	-3.5%	20,008	336	1.1%	-9.3%	21.0
10/16/2020	913	(24)	0.8%	-8.3%	19,721	(287)	-1.4%	-7.7%	21.9
10/23/2020	941	28	6.8%	-6.3%	19,601	(120)	-0.5%	-7.1%	21.0

4-week average change:

15

4-week average change:

-23

YOY Δ

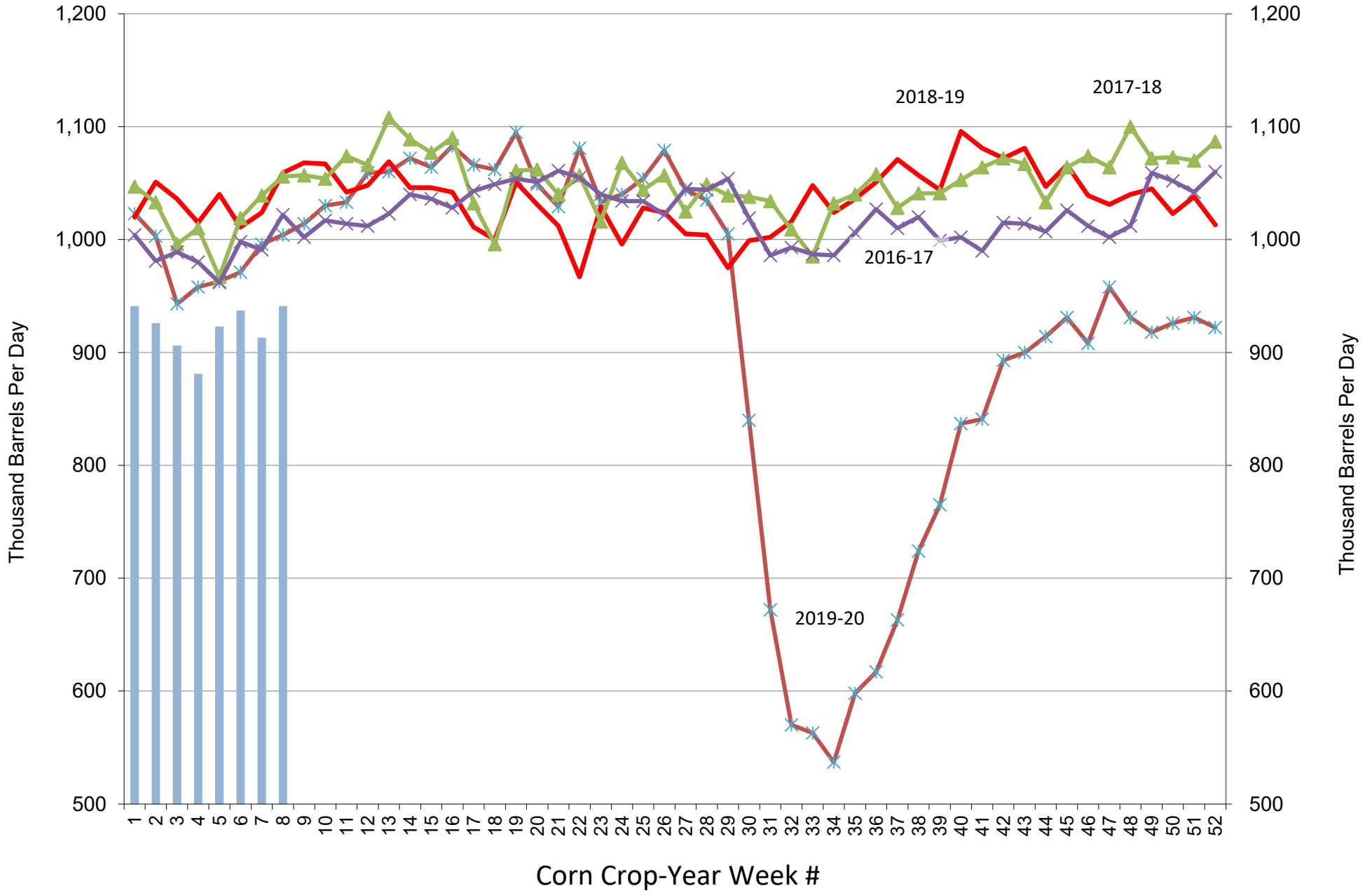
-10.3%

CY to Date:

929 2019-20 season average

Source: Reuters, EIA, FI

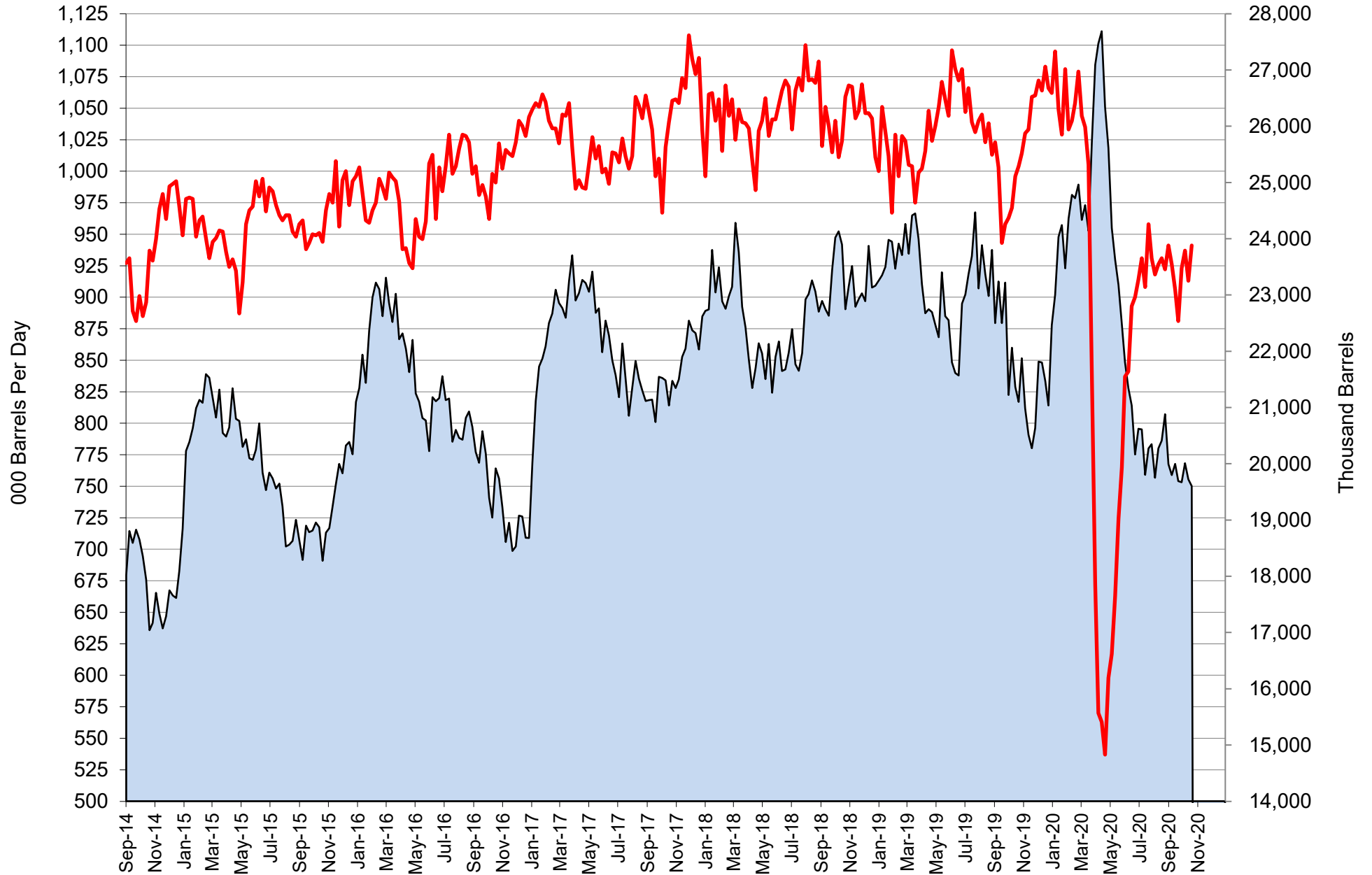
US Weekly Ethanol Production



Source: EIA & FI

■ 2020-21
 ✕ 2019-20
 — 2018-19
 ▲ 2017-18
 ✕ 2016-17

US Weekly Ethanol Production and Stocks

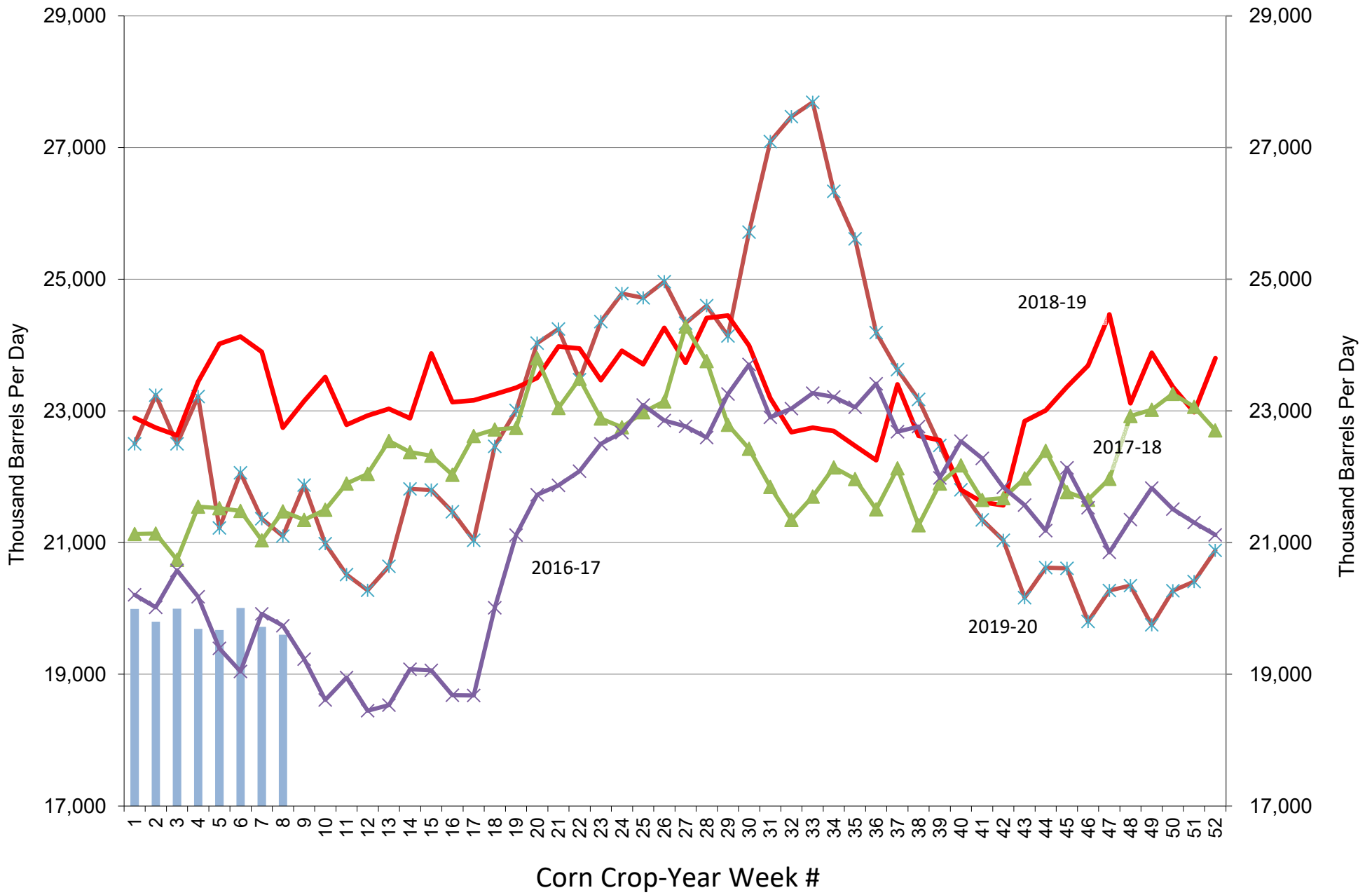


Source: EIA & FI

Stocks (1000bd)

Production (1000bd)

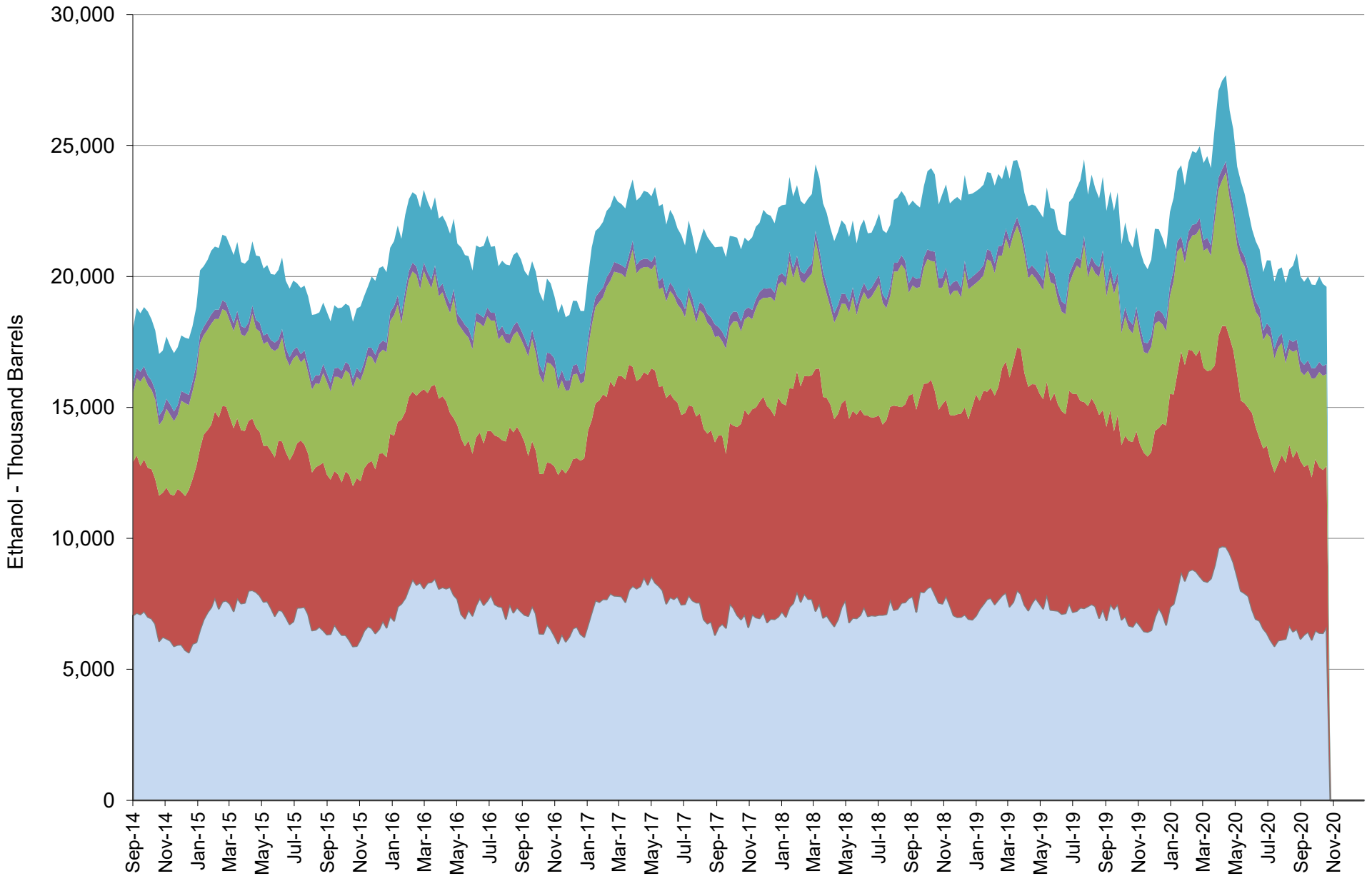
US Weekly Ethanol Stocks (corn crop year)



Source: EIA & FI

■ 2020-21
 ✱ 2019-20
 — 2018-19
 ▲ 2017-18
 ✕ 2016-17

US Weekly Ethanol Stocks by PADD

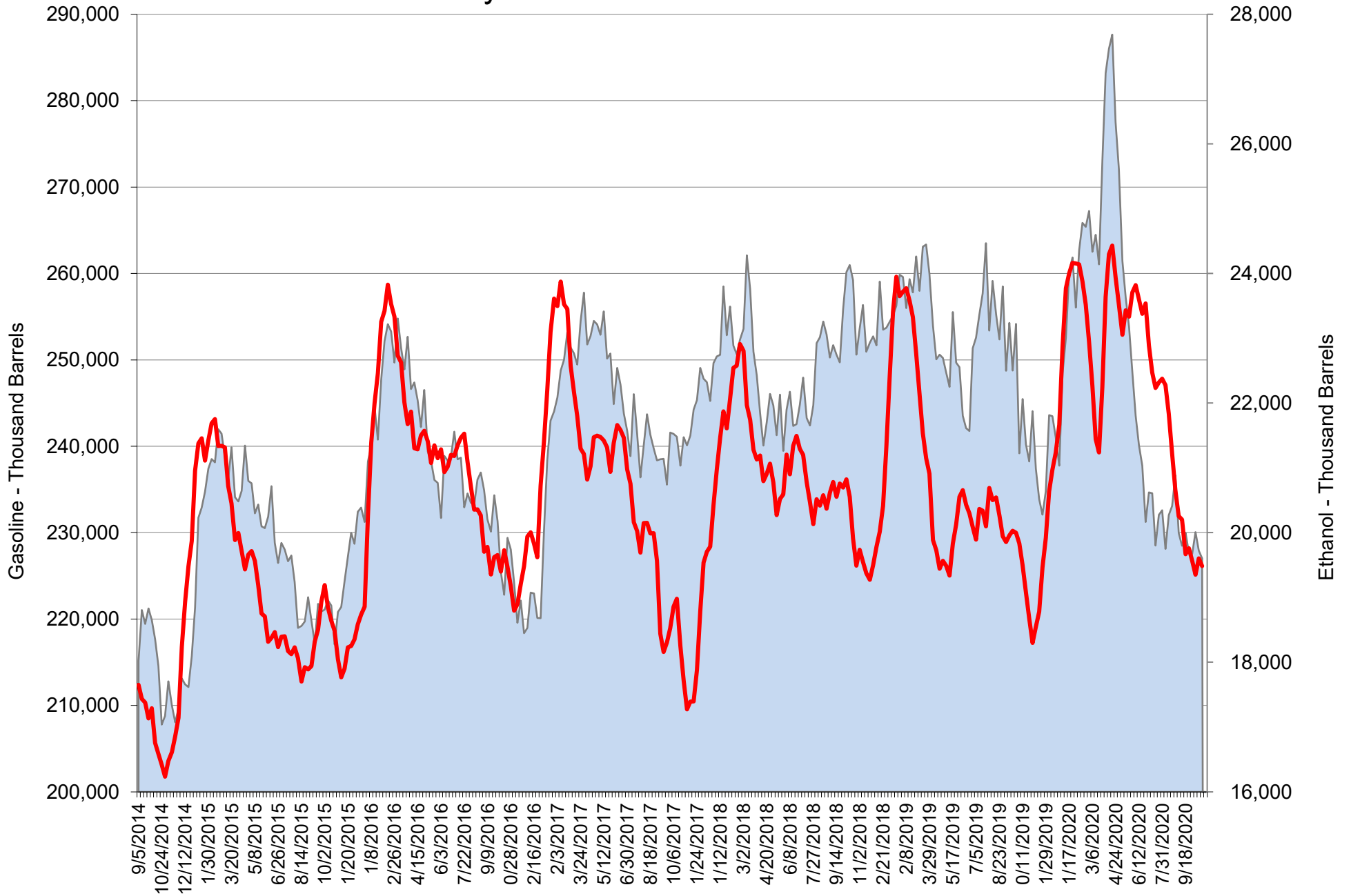


Source: EIA & FI

■ PADD1 ■ PADD2 ■ PADD3 ■ PADD4 ■ PADD5

10/28/2020

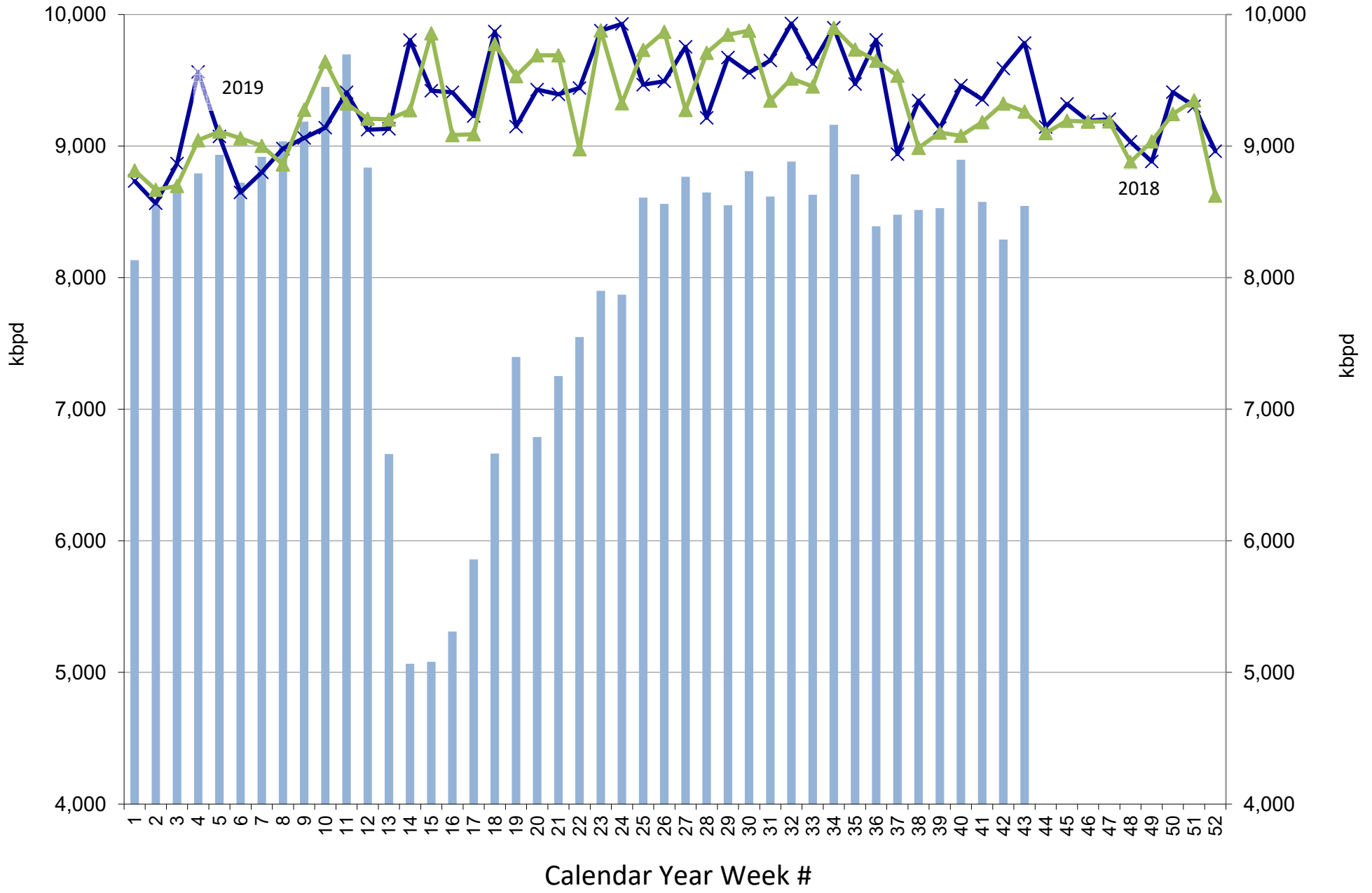
US Weekly Gasoline and Ethanol Stocks



Source: EIA & FI

Stocks (1000bd) US Gasoline Ending Stocks (thousand barrels)

US Weekly Gasoline Product Supplied



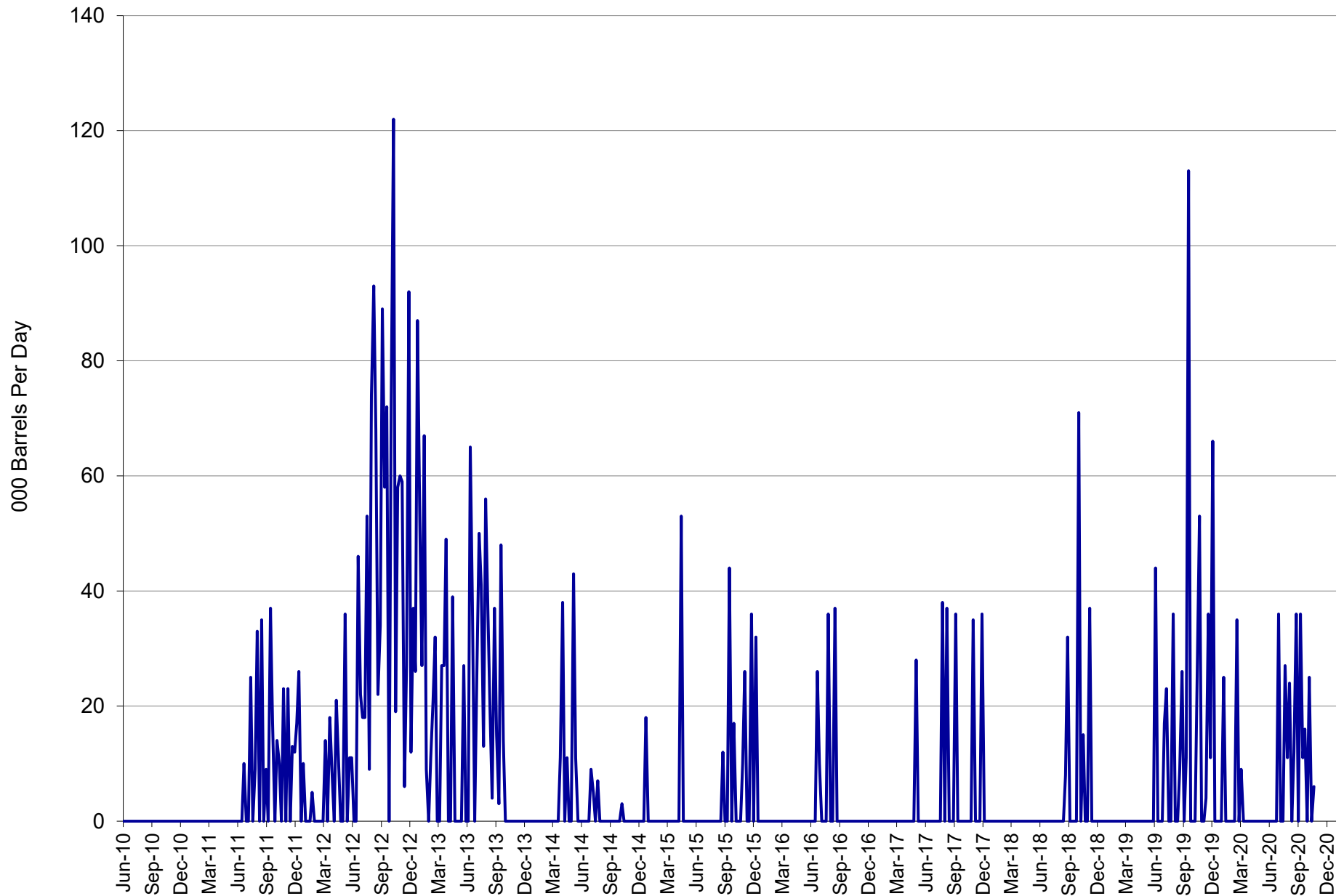
Source: EIA & FI

Gasoline Product Supplied (kbpd)

2019

2018

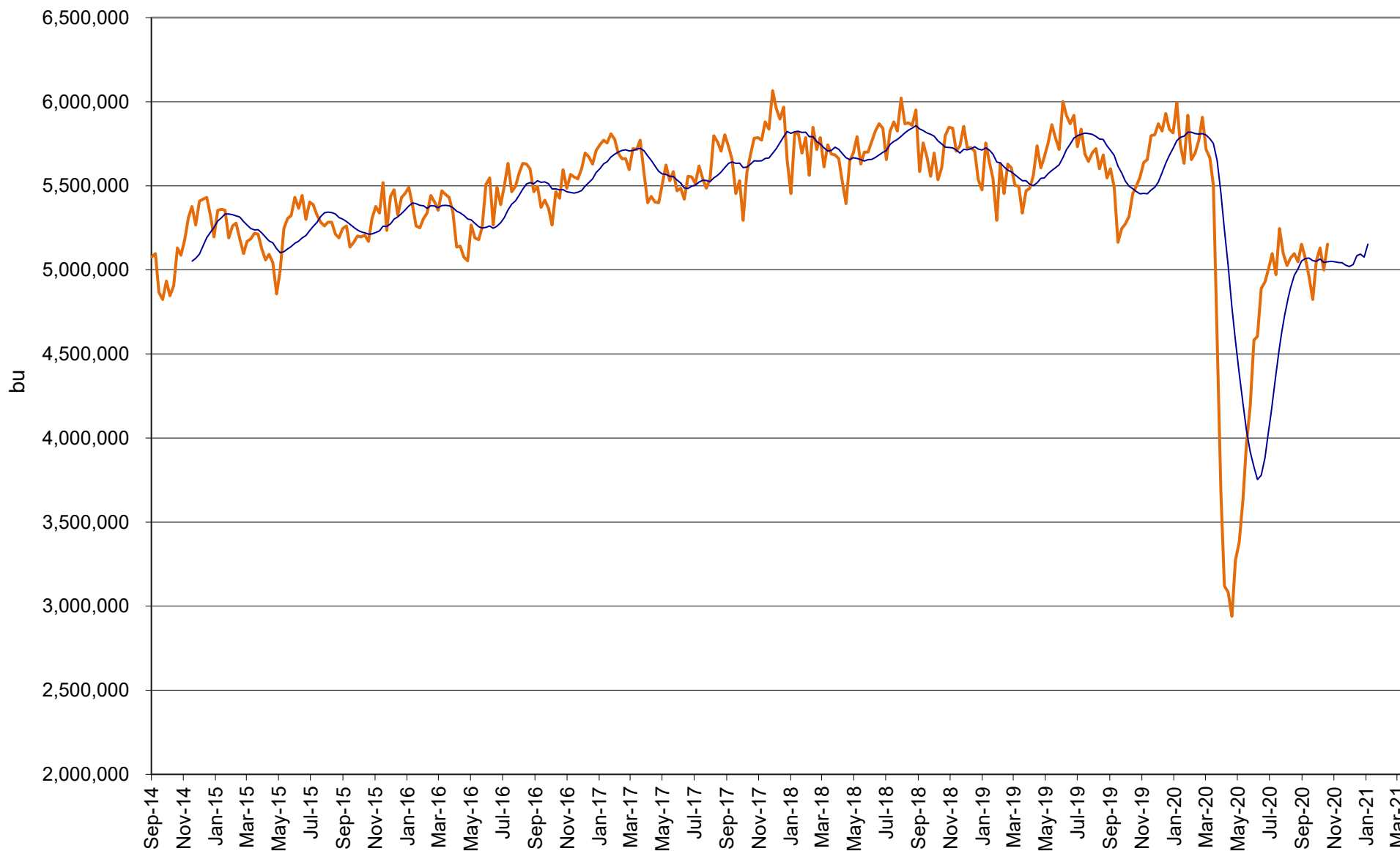
US Weekly Ethanol Imports



Source: EIA & FI

— Imports (BPD)

US Annualized Implied Corn Use

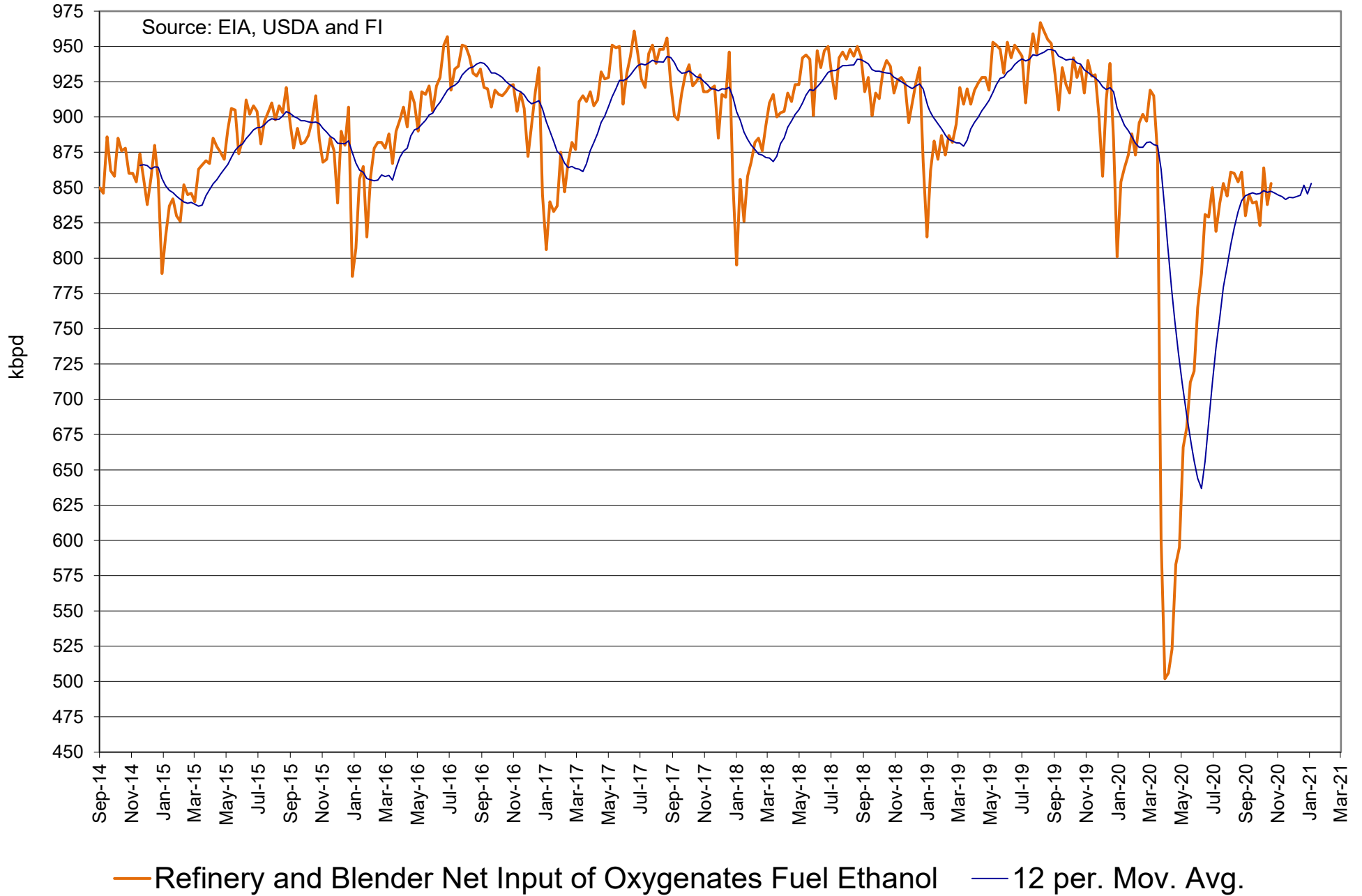


Source: EIA, USDA and FI

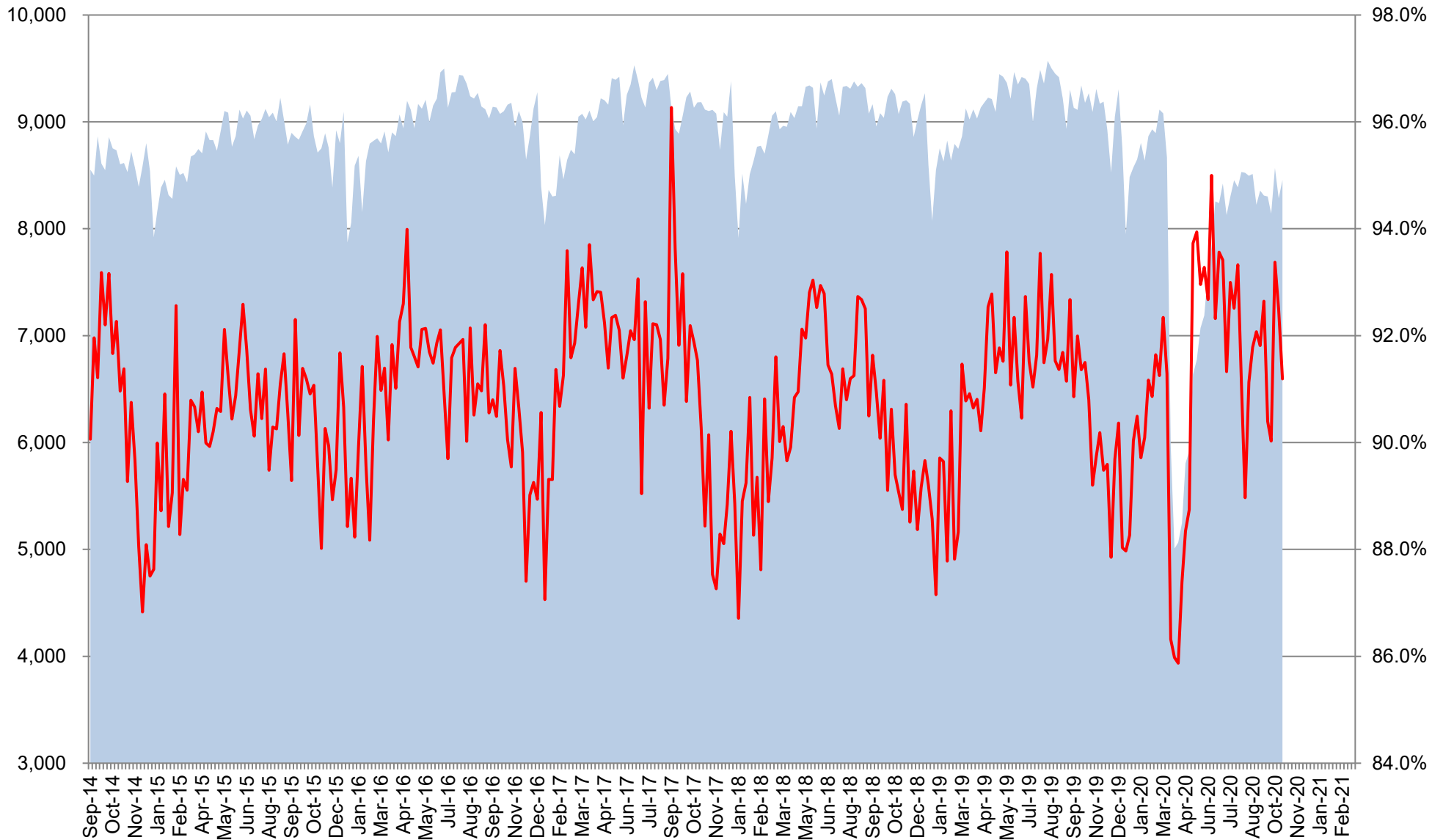
— US

— 12 per. Mov. Avg. (US)

Refinery and Blender Net Input of Oxygenates Fuel Ethanol



US Net Blender Input of Fuel Ethanol and % Blend of Net Production of Finished Motor Gasoline

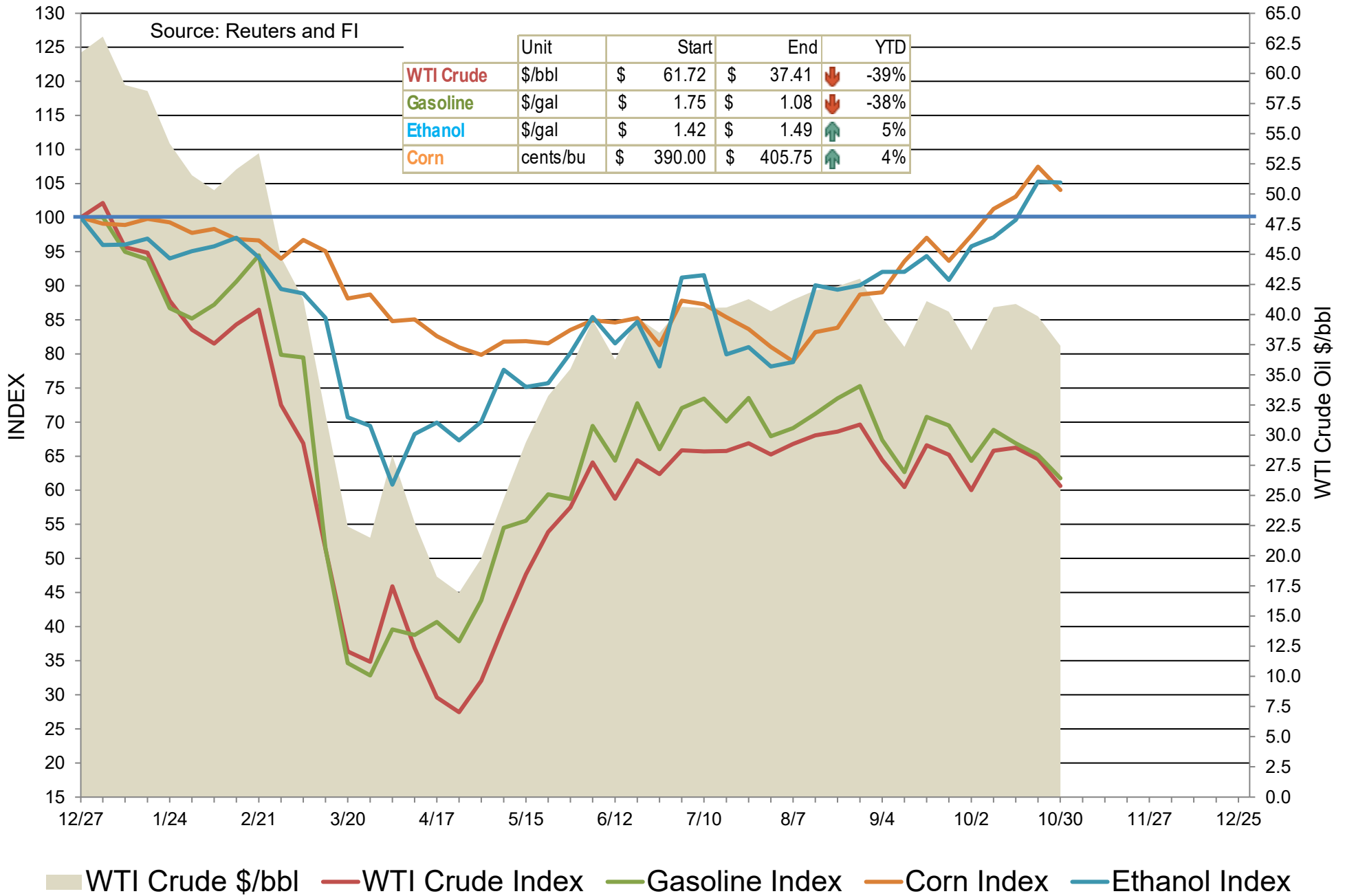


Source: EIA, USDA and FI

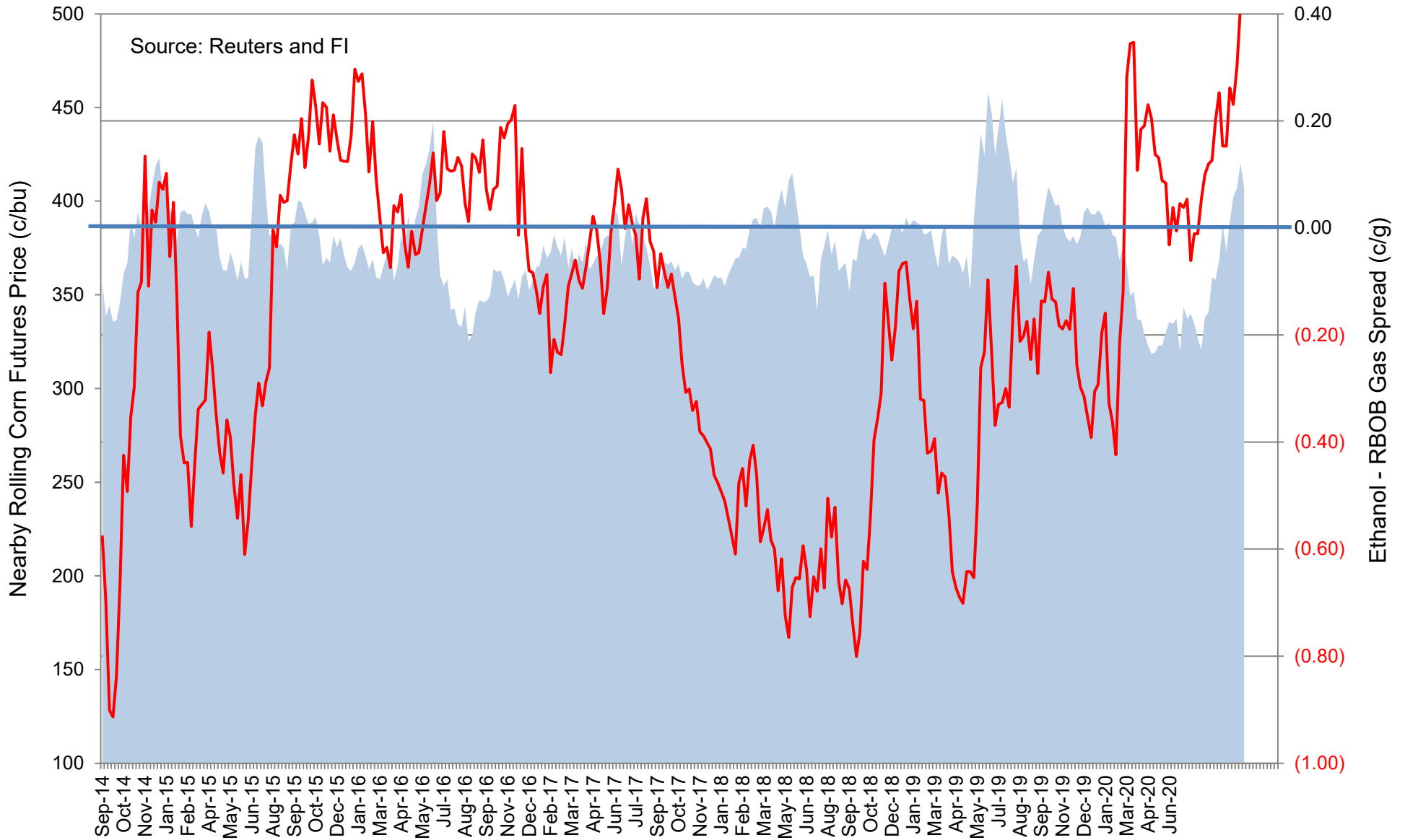
■ Total Blend Etoh

— Etoh Blend %

Indexed Commodity Prices Starting January 2020 versus WTI Crude Nearby Futures



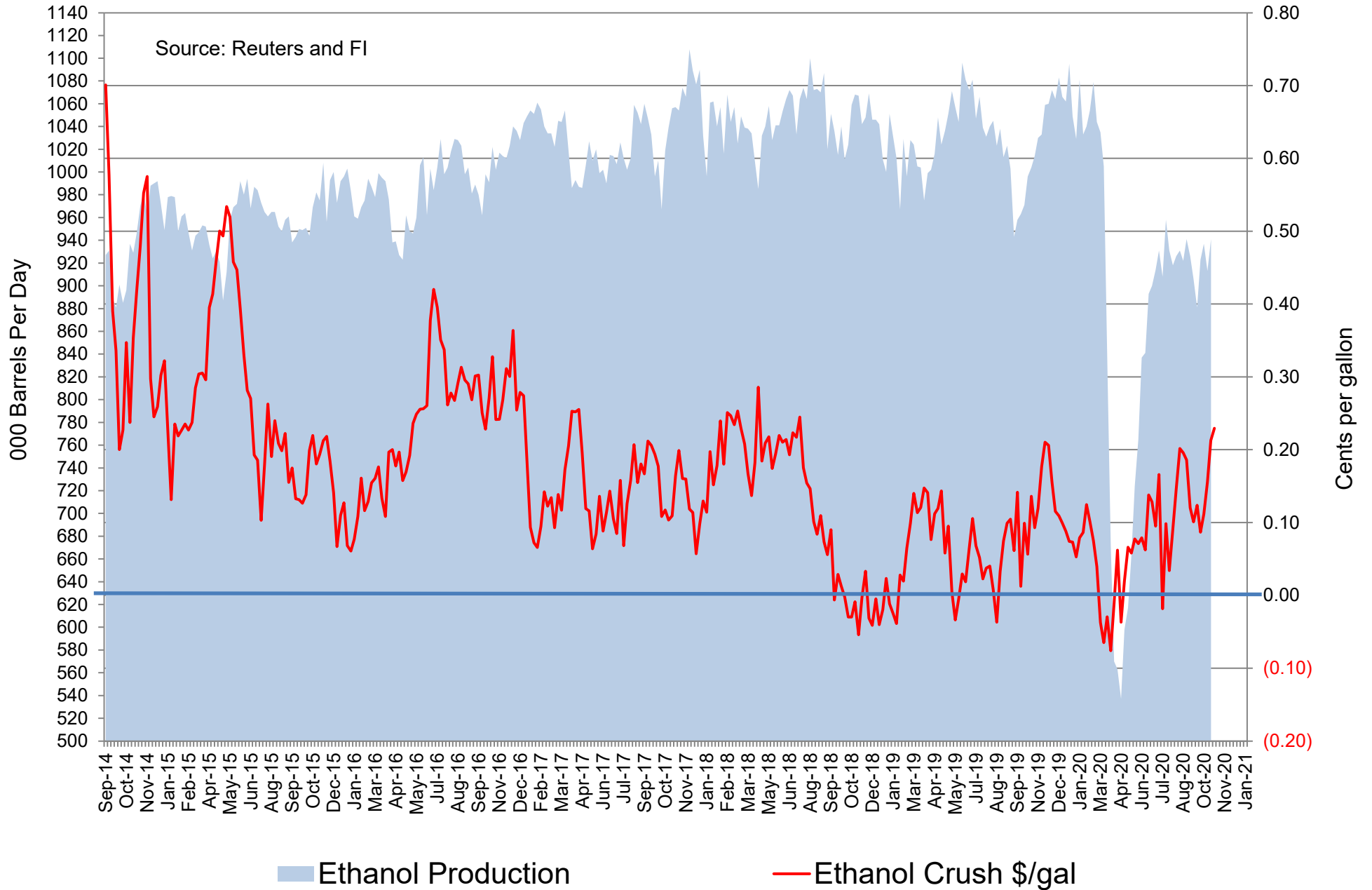
CBOT Second Month Corn Futures versus Second Month Ethanol - RBOB Futures Spread



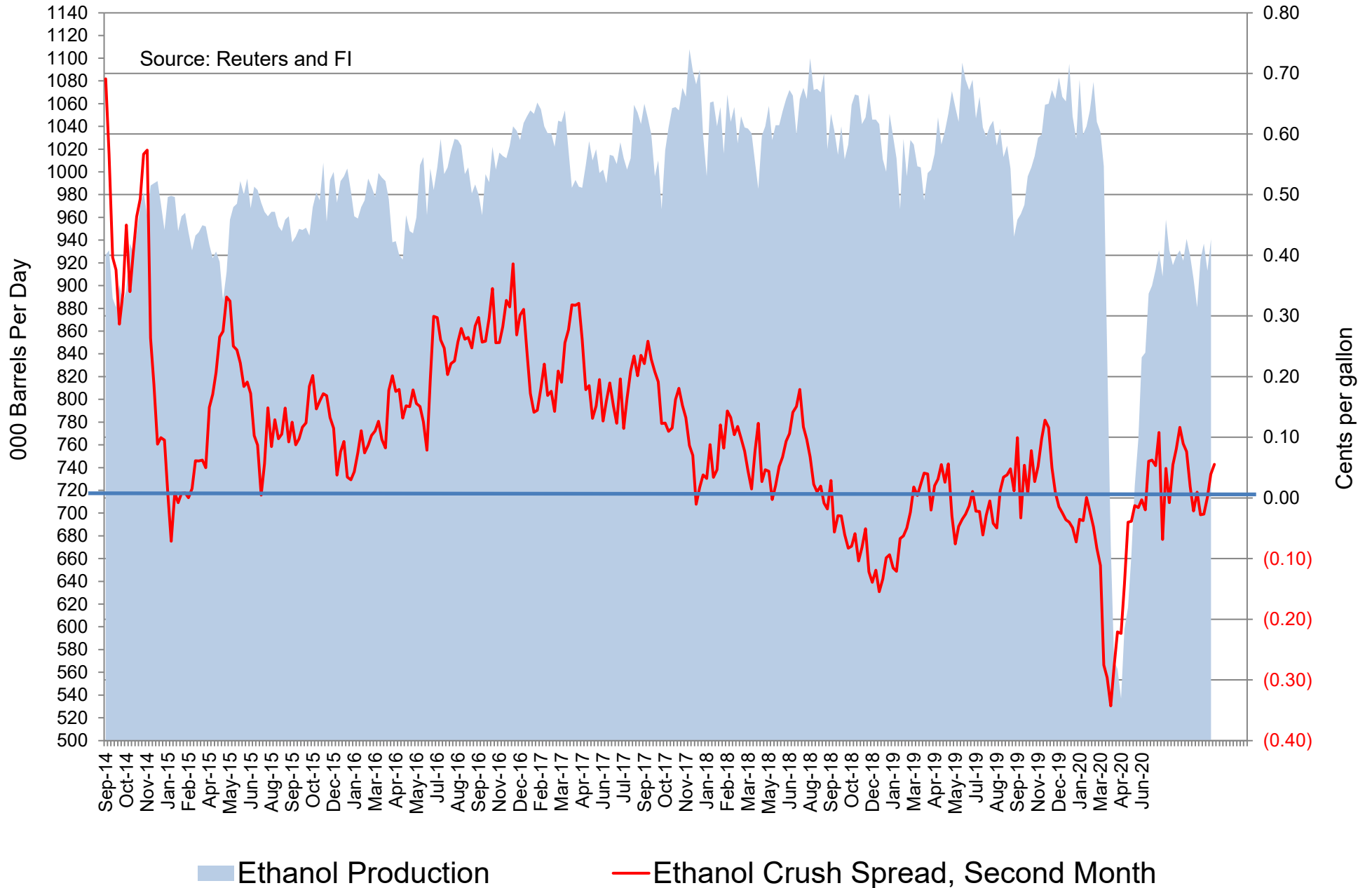
■ Nearby CBOT corn

— Rolling 2nd Month Ethanol-RBOB Spread

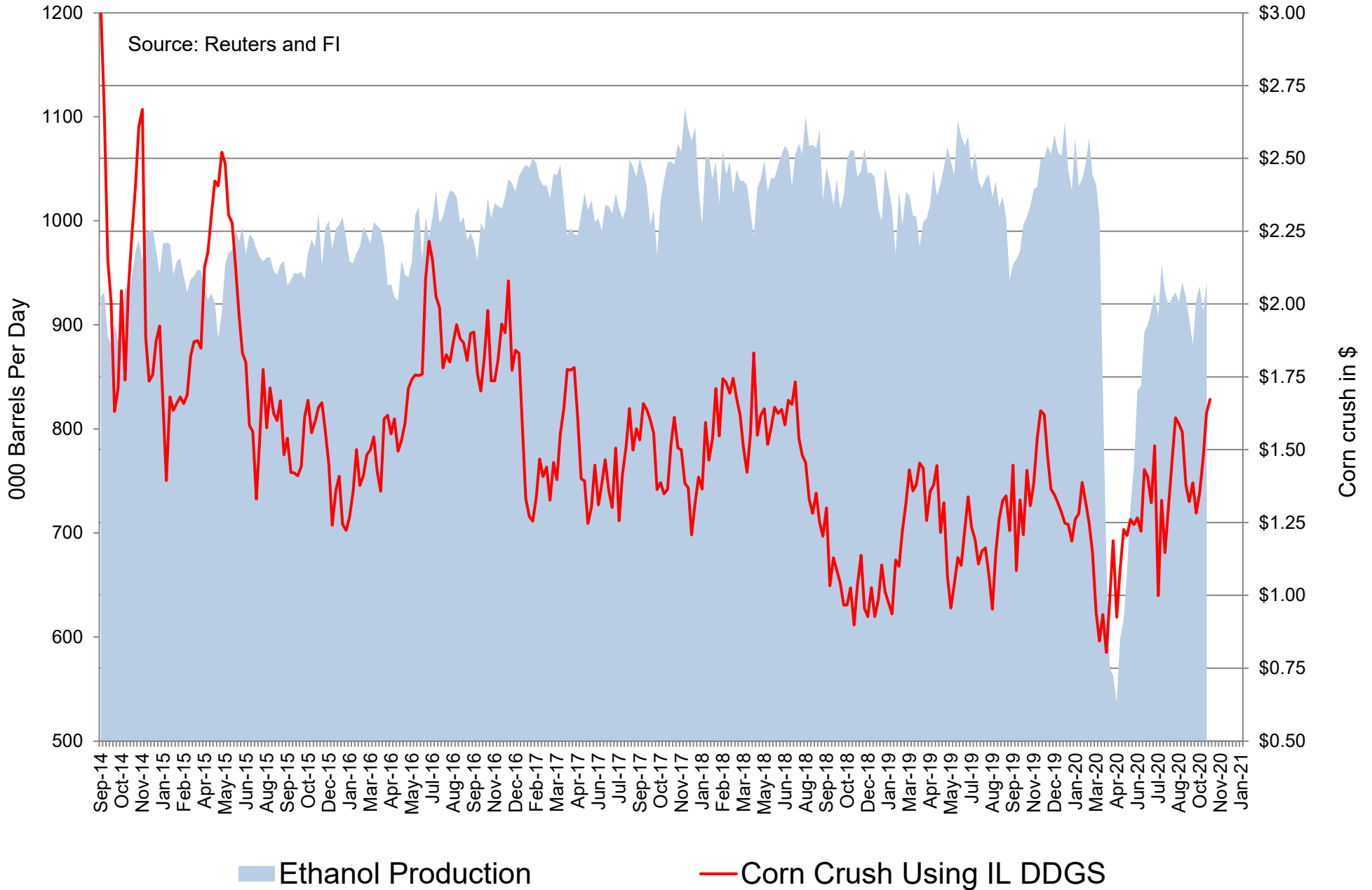
CBOT Second Month Corn Crush Spread versus Weekly Ethanol Production (uses Chicago ethanol and IL DDGS w/ implied costs)



Chicago Platts Second Month Corn Crush Spread versus Weekly Ethanol Production (Straight Calculation)



CBOT Second Month Corn Crush Spread with IL DDGS versus Weekly Ethanol Production (straight 3-commodity calculation)



Disclaimer

TO CLIENTS/PROSPECTS OF FUTURES INTERNATIONAL, SEE RISK DISCLOSURE BELOW:

THIS COMMUNICATION IS CONVEYED AS A SOLICITATION FOR ENTERING INTO A DERIVATIVES TRANSACTION.

Any trading recommendations and market or other information to Customer by Futures International (FI), although based upon information obtained from sources believed by FI to be reliable may not be accurate and may be changed without notice to customer. FI makes no guarantee as to the accuracy or completeness of any of the information or recommendations furnished to Customer. Customer understands that FI, its managers, employees and/or affiliates may have a position in commodity futures, options or other derivatives which may not be consistent with the recommendations furnished by FI to Customer.

The risk of trading futures and options and other derivatives involves a substantial risk of loss and is not suitable for all persons. In purchasing an option, the risk is limited to the premium paid, and all commissions and fees involved with the trade. When an option is shorted or written, the writer of the option has unlimited risk with respect to the option written. The use of options strategies such as a straddles and strangles involve multiple option positions and may substantially increase the amount of commissions and fees paid to execute the strategy. Option prices do not necessarily move in tandem with cash or futures prices. Each person must consider whether a particular trade, combination of trades or strategy is suitable for that person's financial means and objectives.

This material may include discussions of seasonal patterns, however, futures prices have already factored in the seasonal aspects of supply and demand, and seasonal patterns are no indication of future market trends. Finally, past performance is not indicative of future results.

This communication may contain links to third party websites which are not under the control of FI and FI is not responsible for their content. Products and services are offered only in jurisdictions where solicitation and sale are lawful, and in accordance with applicable laws and regulations in each such jurisdiction.