

CFTC COMMITMENT OF TRADERS REPORT

As of 10/6/2020

TRADITIONAL FUNDS net position changes

Wed to Tue, in 000 contracts

	Corn	Bean	Meal	Oil	Chi. Wheat	KC Wheat	Min Wheat
Futures Only	43.8	17.4	10.0	(9.7)	10.9	15.3	(0.2)
Futures & Options Combined	43.7	19.4	11.6	(14.6)	22.6	13.0	(0.0)

TRADITIONAL COMMERCIAL net position changes

	Corn	Bean	Meal	Oil	Chi. Wheat	KC Wheat	Min Wheat
Futures Only	(49.5)	(27.9)	(12.8)	11.4	(10.6)	(17.0)	(1.3)
Futures & Options Combined	(58.4)	(34.5)	(14.5)	16.3	(21.4)	(14.9)	(1.3)

MANAGED MONEY net position changes

	Corn	Bean	Meal	Oil	Chi. Wheat	KC Wheat	Min Wheat
Futures Only	32.5	5.8	4.5	(12.9)	17.9	8.7	(0.3)
Futures & Options Combined	27.6	9.4	4.1	(13.1)	17.9	9.4	(0.3)

SWAP DEALERS net position changes

	Corn	Bean	Meal	Oil	Chi. Wheat	KC Wheat	Min Wheat
Futures Only	6.4	0.6	4.7	2.9	(3.4)	1.0	(0.6)
Futures & Options Combined	(1.6)	(5.3)	3.8	2.7	(13.3)	1.1	(0.6)

PRODUCERS/END USERS net position changes

	Corn	Bean	Meal	Oil	Chi. Wheat	KC Wheat	Min Wheat
Futures Only	(55.9)	(28.5)	(17.4)	8.5	(7.2)	(18.0)	(0.7)
Futures & Options Combined	(56.8)	(29.3)	(18.3)	13.6	(8.2)	(15.9)	(0.7)

INDEX net position changes

	Corn	Bean	Meal	Oil	Chi. Wheat	KC Wheat	Min Wheat
Futures & Options Combined	(3.3)	(3.2)	7.1	2.5	(6.4)	2.7	NA

SUPPLEMENTAL NON-COMMERCIAL net position changes

	Corn	Bean	Meal	Oil	Chi. Wheat	KC Wheat	Min Wheat
Futures & Options Combined	49.5	20.4	9.6	(13.5)	23.9	11.4	NA

OPEN INTEREST net position changes

Wed to Tue, in 000 contracts

	Corn	Bean	Meal	Oil	Chi. Wheat	KC Wheat	Min Wheat
Futures Only	36.5	39.1	14.3	0.4	28.8	11.4	0.6
Futures & Options Combined	94.2	83.3	27.3	8.0	56.0	24.3	0.8

Source: CFTC and FI

Wed to Tue, in 000 contracts

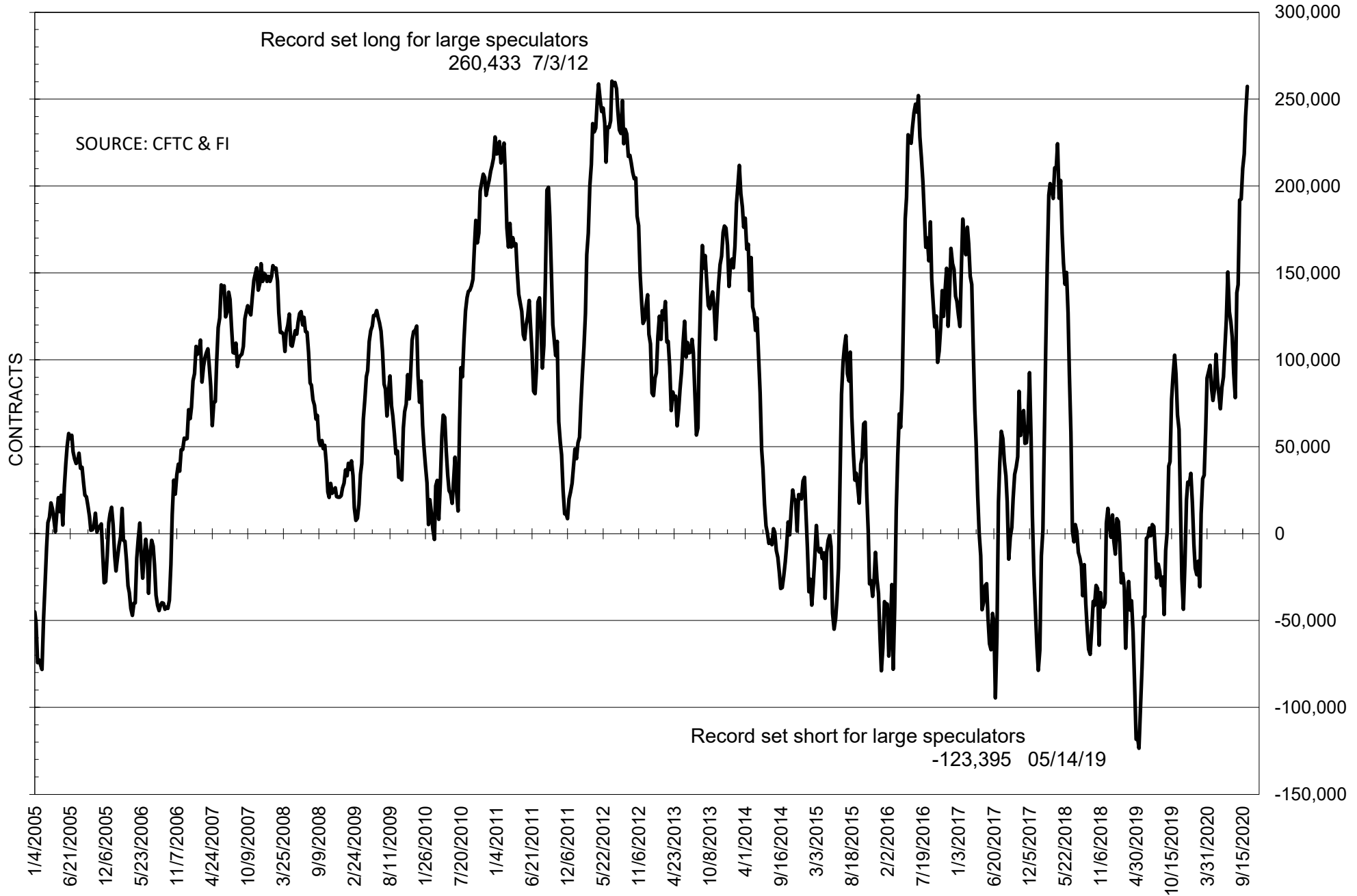
**COMMITMENT OF TRADERS
FUTURES ONLY NET POSITIONS
AS OF 10/06/2020
(IN THOUSAND CONTRACTS)**

	COMMERCIAL				(FUND) NON COMMERCIAL				(SPEC) NON-REPORTABLE			
	6-Oct	29-Sep	22-Sep	15-Sep	6-Oct	29-Sep	22-Sep	15-Sep	6-Oct	29-Sep	22-Sep	15-Sep
	WHEAT											
Chicago	-21.2	-10.7	-12.0	-10.7	37.3	26.4	26.2	28.2	-16.0	-15.7	-14.3	-17.5
Kansas City	-34.5	-17.5	-22.5	-16.3	34.6	19.3	23.1	15.8	-0.1	-1.8	-0.6	0.5
Minneapolis	1.6	2.9	0.7	1.8	-3.0	-2.8	-0.5	-1.5	1.4	-0.1	-0.2	-0.3
All Wheat	-54.1	-25.2	-33.8	-25.1	68.9	42.8	48.8	42.5	-14.8	-17.6	-15.0	-17.4
CORN	-168.6	-119.2	-94.2	-63.5	225.7	181.9	156.9	111.8	-57.0	-62.7	-62.7	-48.4
OATS	-3.3	-3.1	-3.4	-3.1	2.0	1.9	1.9	1.6	1.2	1.2	1.6	1.5
SOYBEANS	-246.3	-218.4	-201.7	-195.8	257.3	239.9	218.6	210.1	-10.9	-21.4	-16.8	-14.3
SOY OIL	-127.3	-138.7	-146.2	-138.6	114.5	124.2	127.1	120.6	12.8	14.5	19.1	18.0
SOY MEAL	-127.6	-114.9	-112.5	-92.5	105.4	95.4	91.6	69.5	22.2	19.5	20.9	23.0

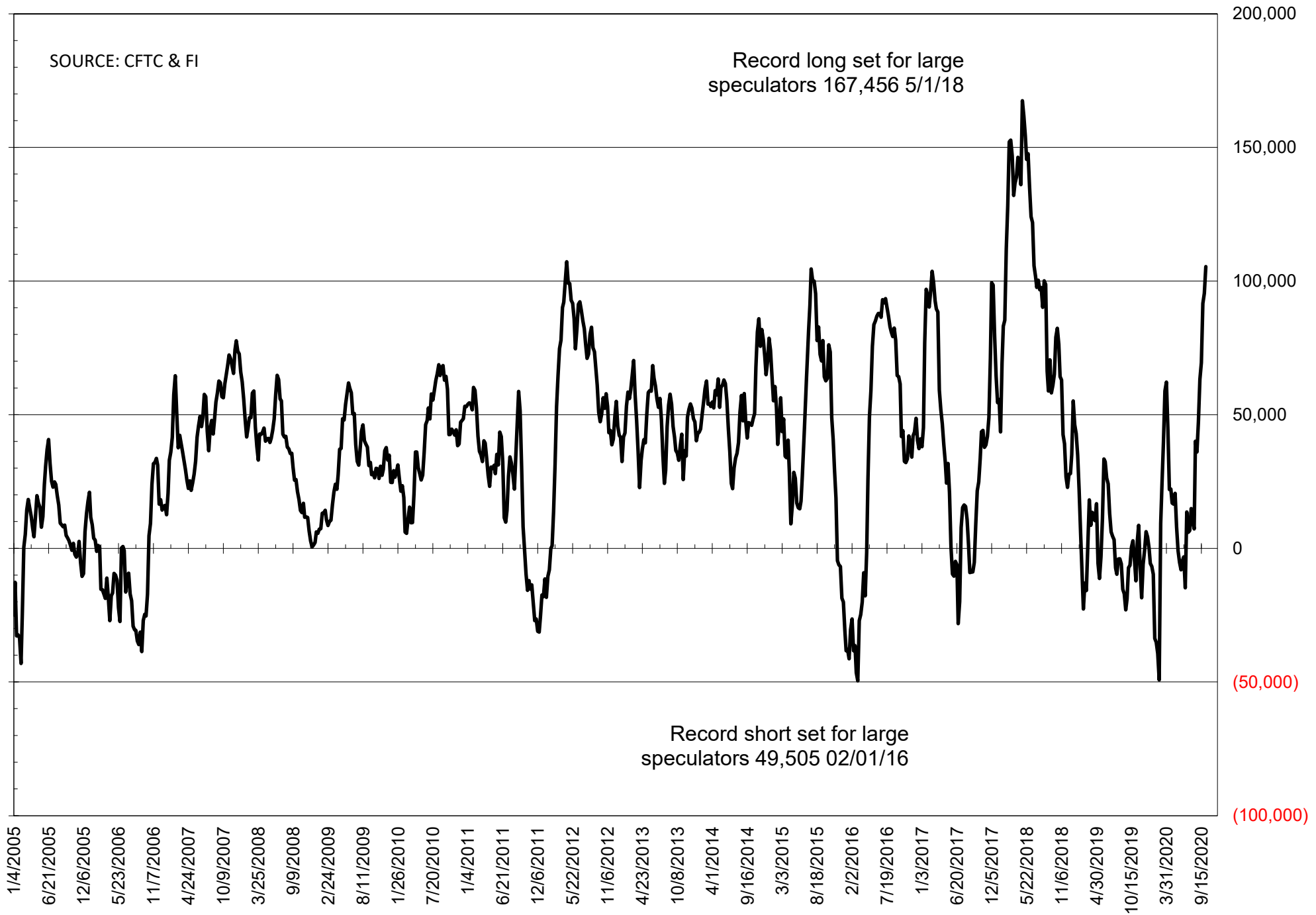
	TOTAL OPEN INTEREST				NEARBY FUTURES PRICE					6-Oct-20 LAST REPORTED % HELD BY TRADERS			
	6-Oct	29-Sep	22-Sep	15-Sep	X/Z Latest	X/Z 6-Oct	X/Z 29-Sep	V/X/Z 22-Sep	V/X/Z 15-Sep	LARGE FUND		SMALL	
										LONG	SHORT	LONG	SHORT
WHEAT													
Chicago	409883	381100	390992	371763	592.25	590.25	549.00	542.50	544.75	0%	23%	0%	11%
Kansas City	234349	222930	228069	229376	534.75	534.25	475.50	472.00	469.75	0%	18%	0%	8%
Minneapolis	62588	61976	59463	56330	543.75	538.25	529.50	532.25	536.25	0%	31%	0%	18%
CORN	1550416	1513913	1502375	1458330	394.50	385.00	364.50	369.50	361.50	0%	11%	0%	12%
OATS	5351	5381	5442	5202	292.75	290.75	278.50	271.00	269.25	0%	1%	0%	16%
SOYBEANS	1023352	984246	974805	939247	1065.50	1044.00	991.75	997.50	974.00	30%	5%	7%	8%
SOY OIL	470998	470634	481507	477751	34.05	33.09	32.76	33.66	33.34	0%	4%	0%	5%
SOY MEAL	452711	438397	466221	454013	364.00	355.50	327.60	320.20	309.50	0%	4%	0%	6%

SOURCE: CFTC & FI

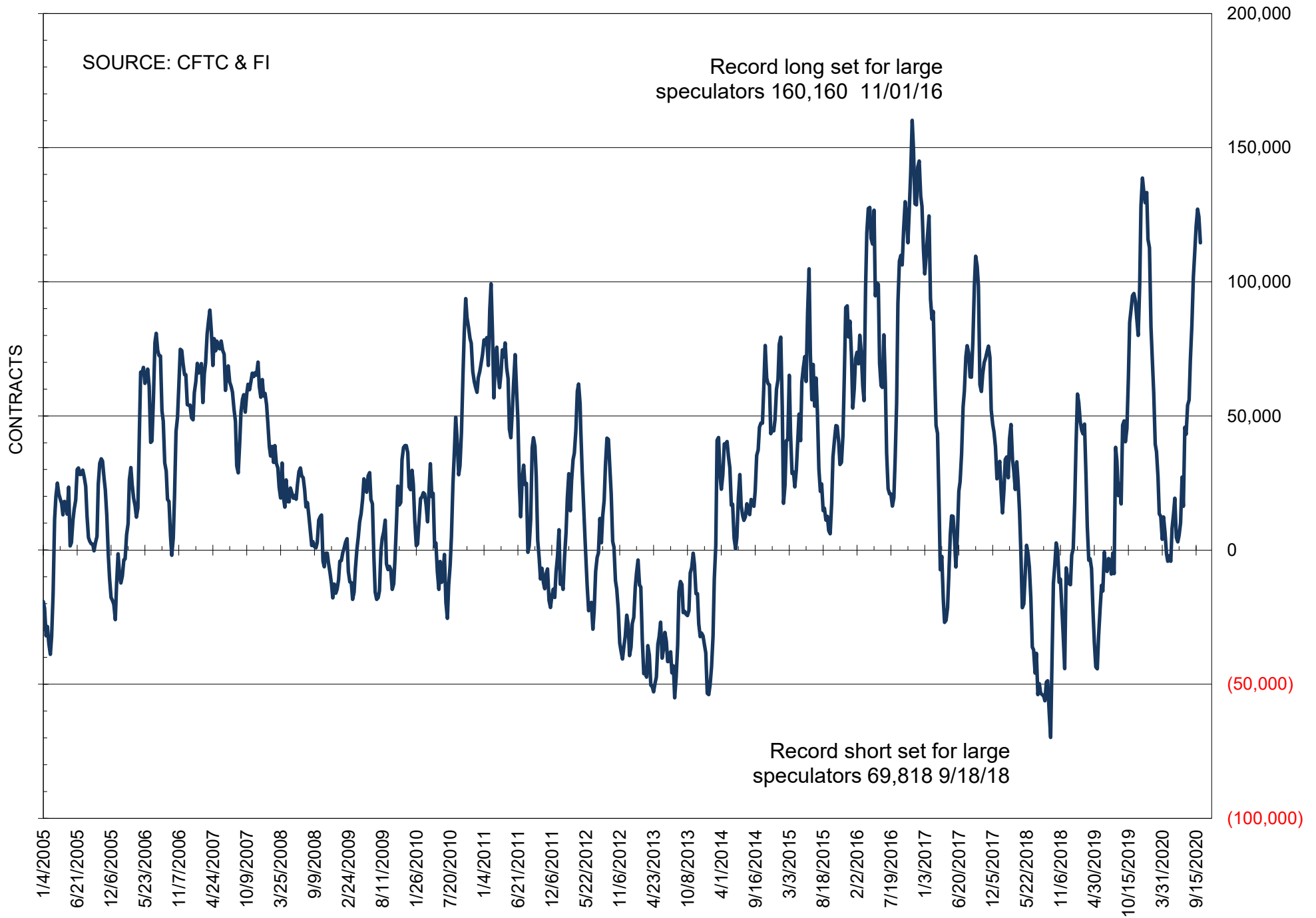
NET POSITION OF FUTURES ONLY LARGE SPECS IN SOYBEANS



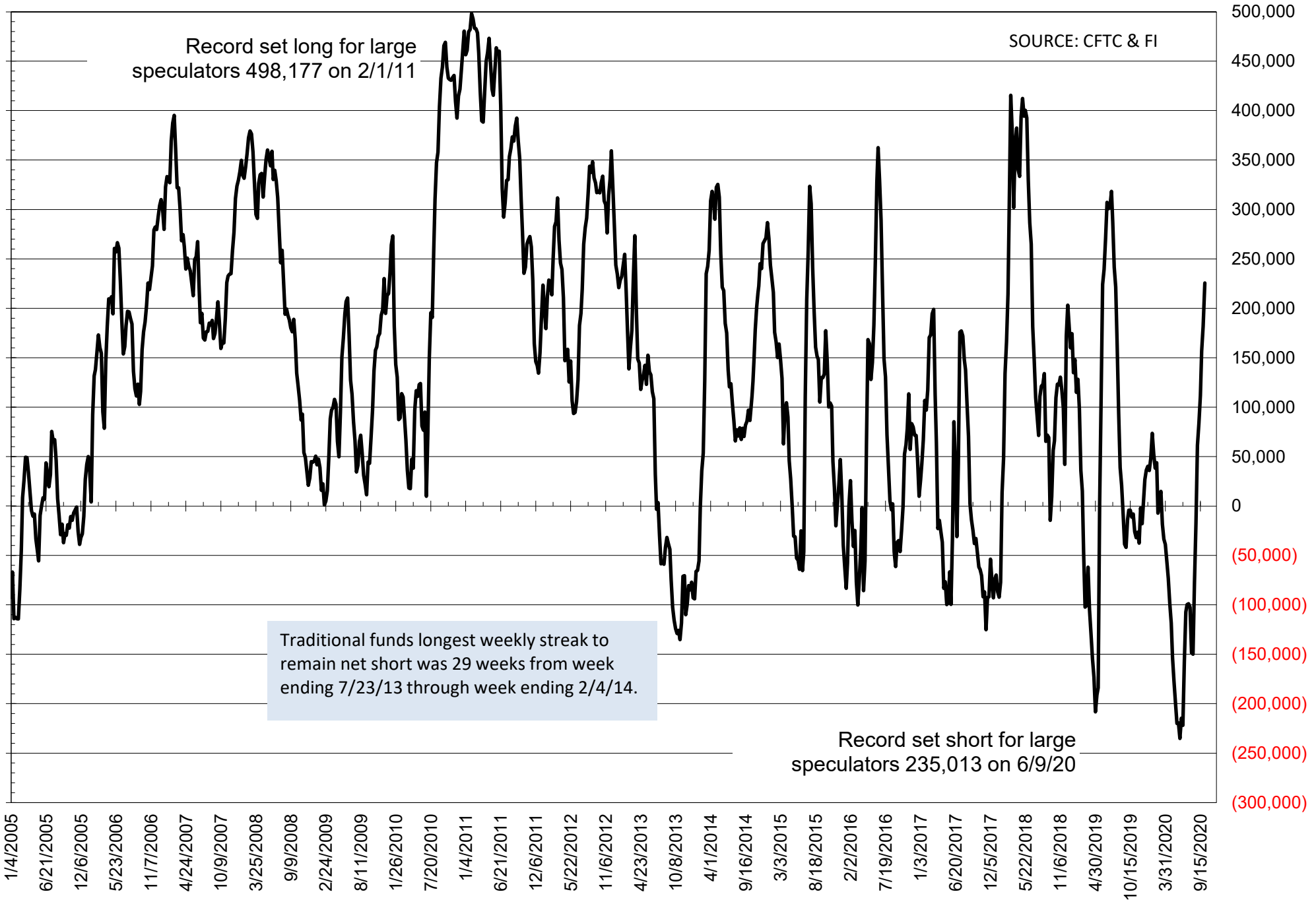
NET POSITION OF FUTURES ONLY LARGE SPECS IN SOYMEAL



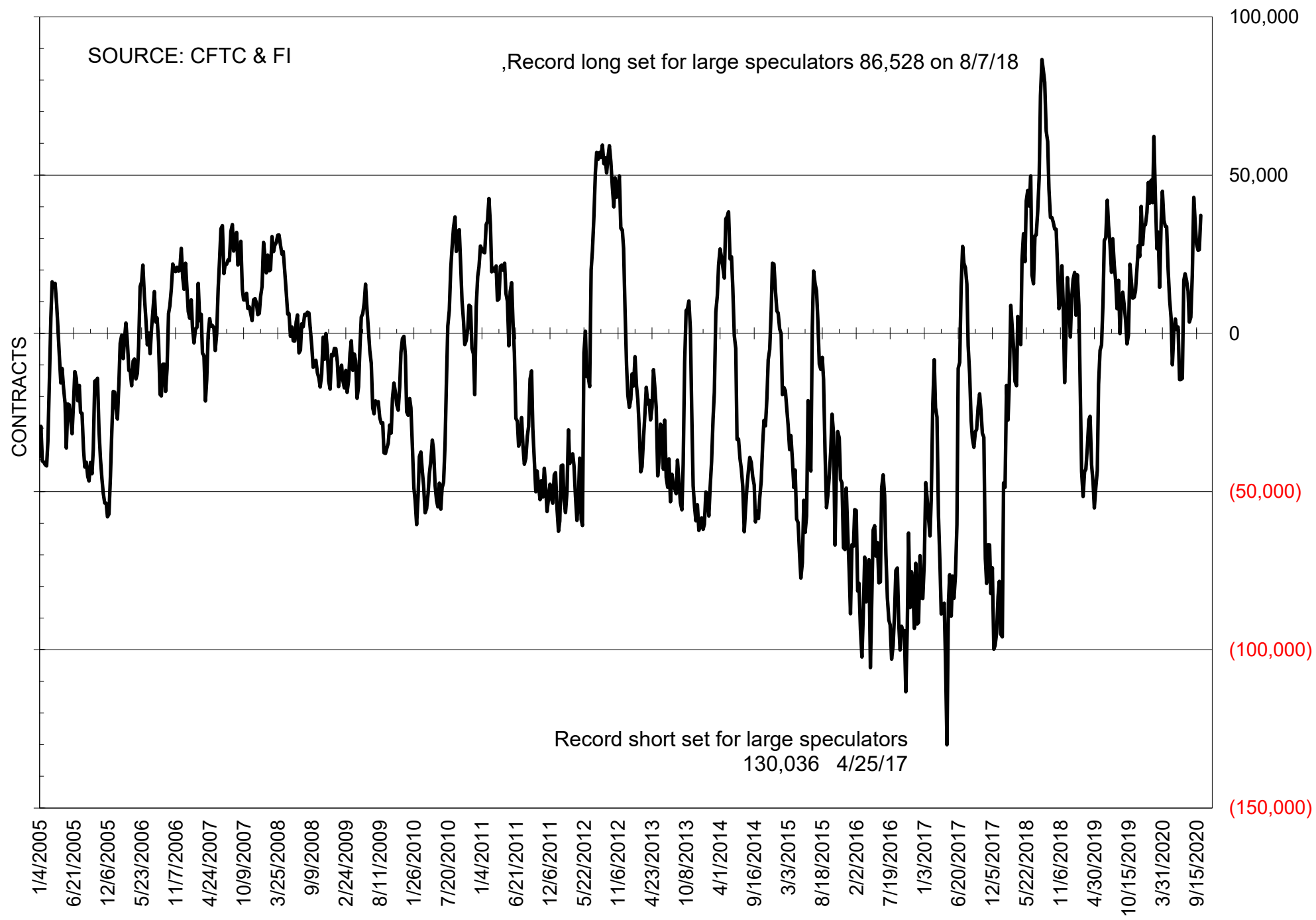
NET POSITION OF FUTURES ONLY LARGE SPECS IN SOYOIL



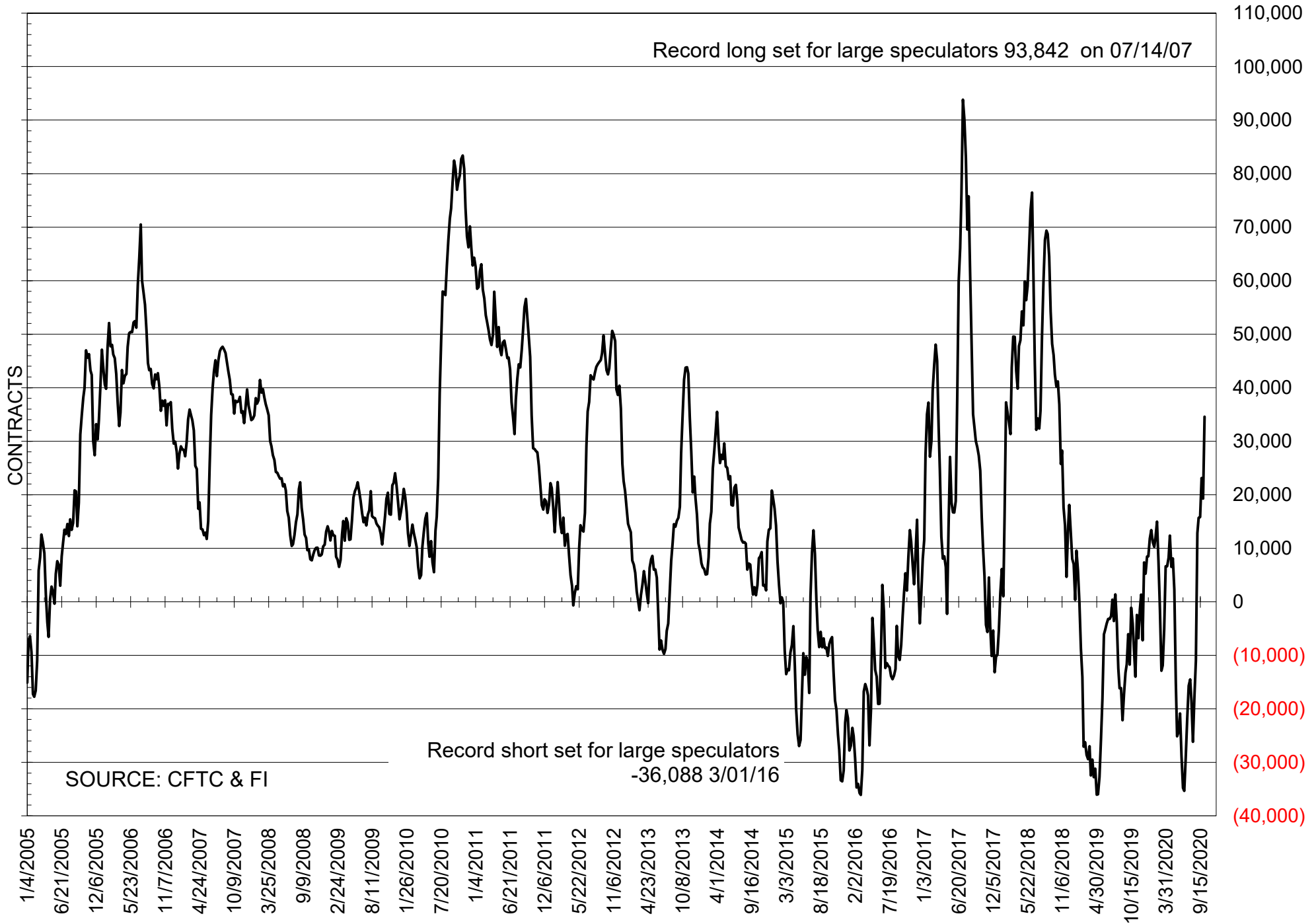
NET POSITION OF LARGE SPECULATORS IN CORN



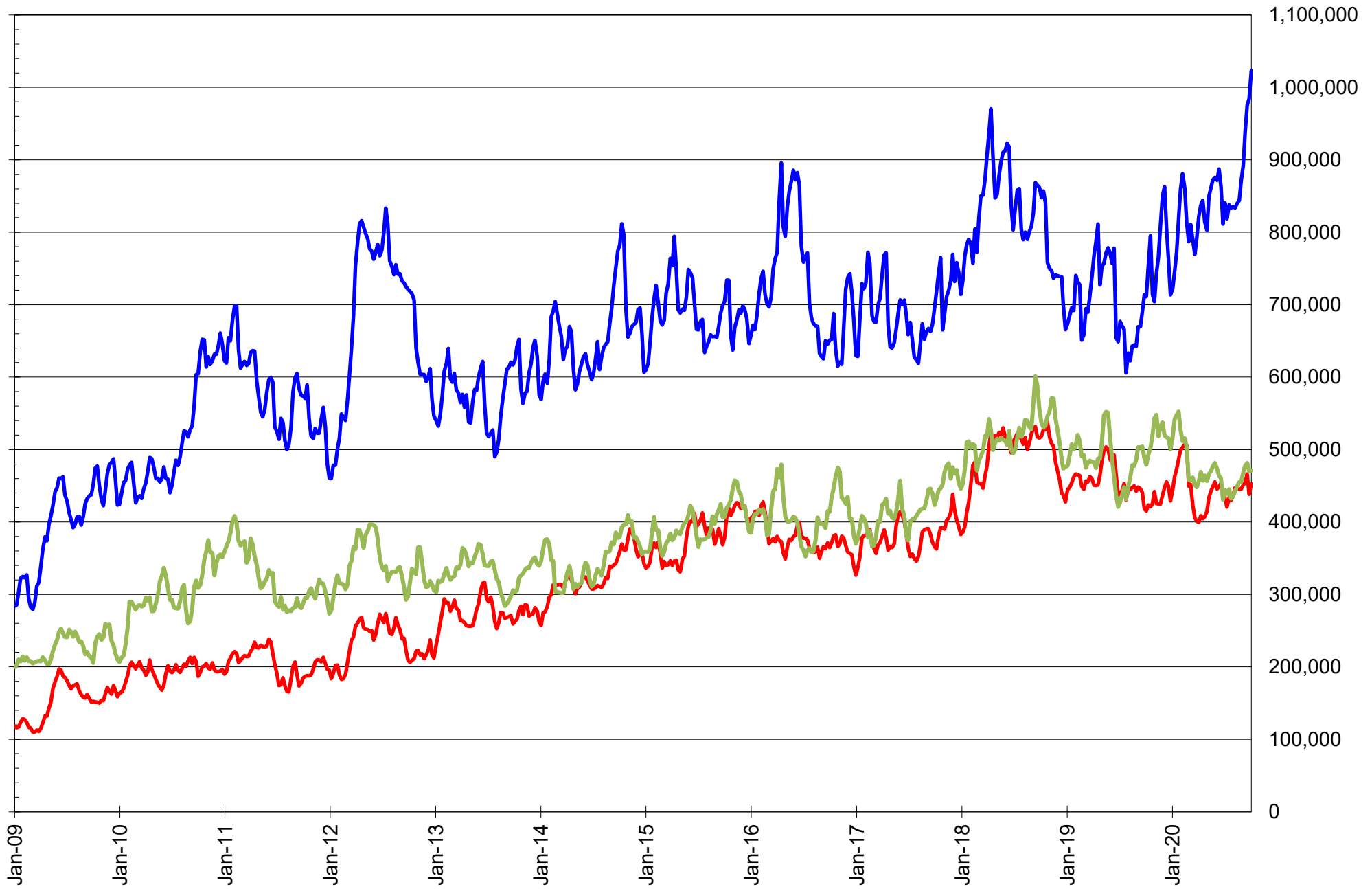
NET POSITION OF FUTURES ONLY LARGE SPECS IN CHICAGO WHEAT



NET POSITION OF LARGE SPECULATORS IN KANSAS CITY WHEAT



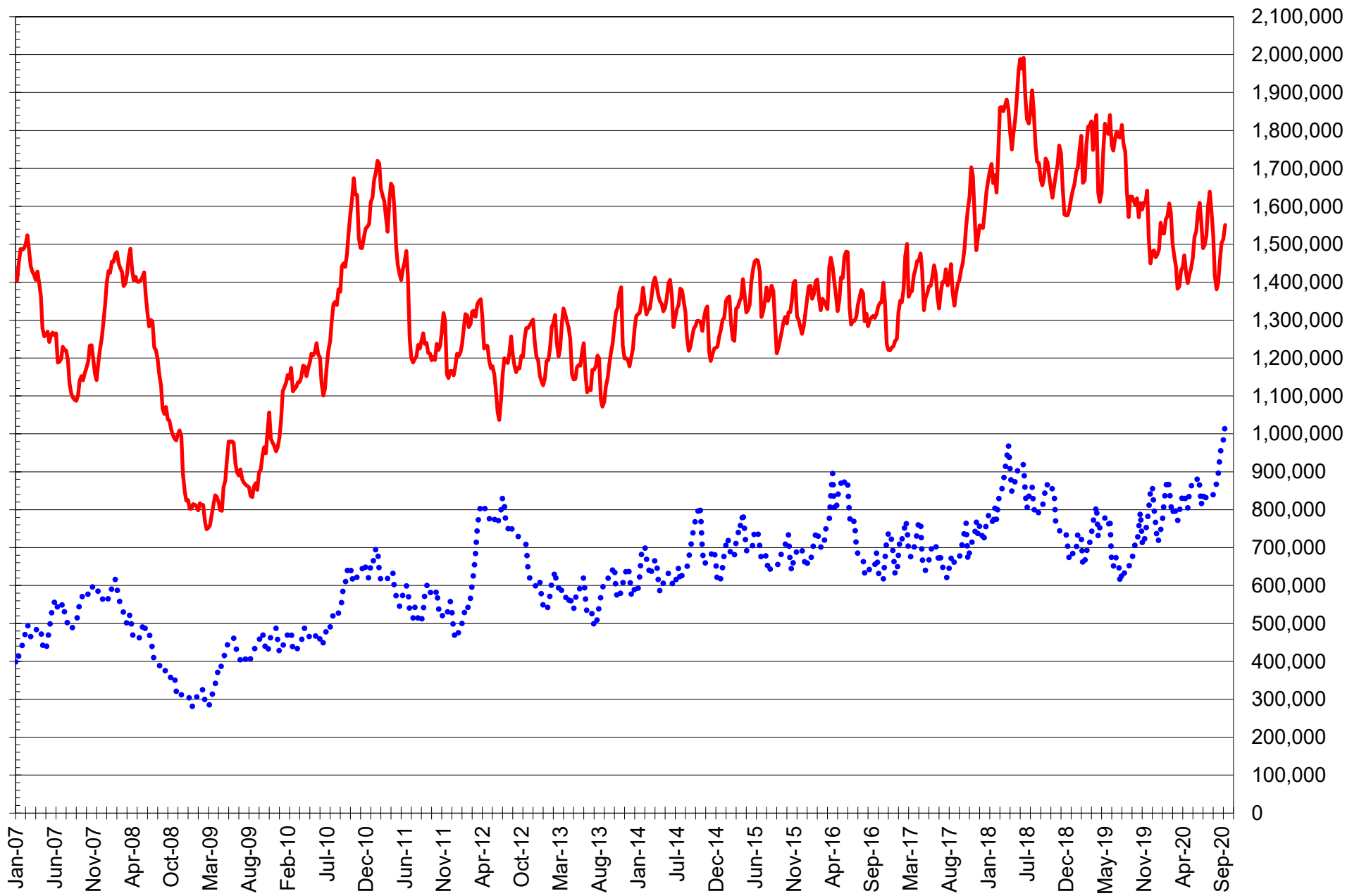
TOTAL OPEN INTEREST IN SOYBEANS, MEAL AND OIL, FUTURES ONLY



SOURCE: CFTC & FI

— SOYBEANS — SOYBEAN MEAL — SOYBEAN OIL

TOTAL OPEN INTEREST IN CORN AND SOYBEANS, FUTURES ONLY

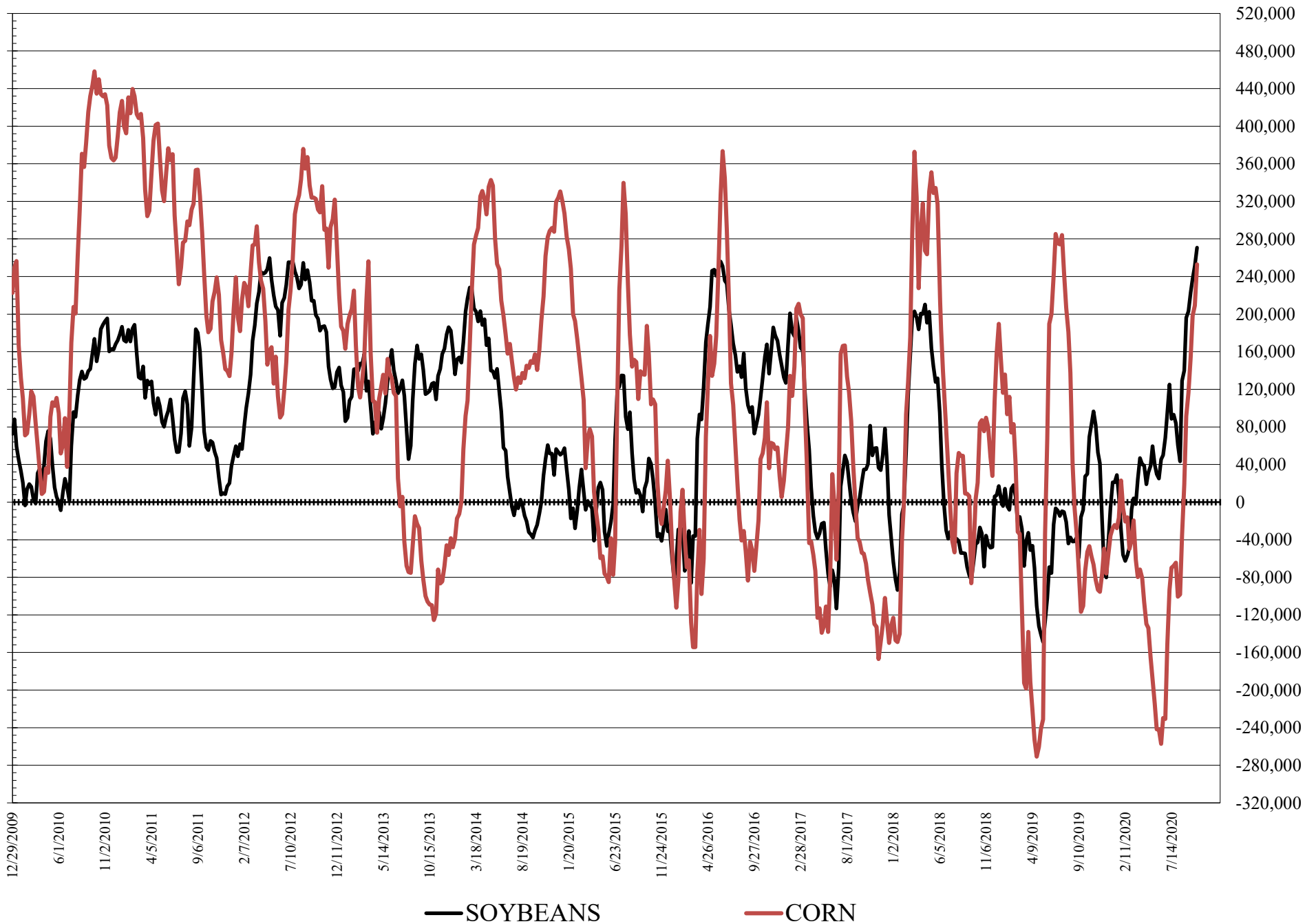


SOURCE: CFTC & FI

— CORN

..... SOYBEANS

NET POSITION FUTURES AND OPTIONS OF LARGE SPECULATORS IN SOYBEANS AND CORN



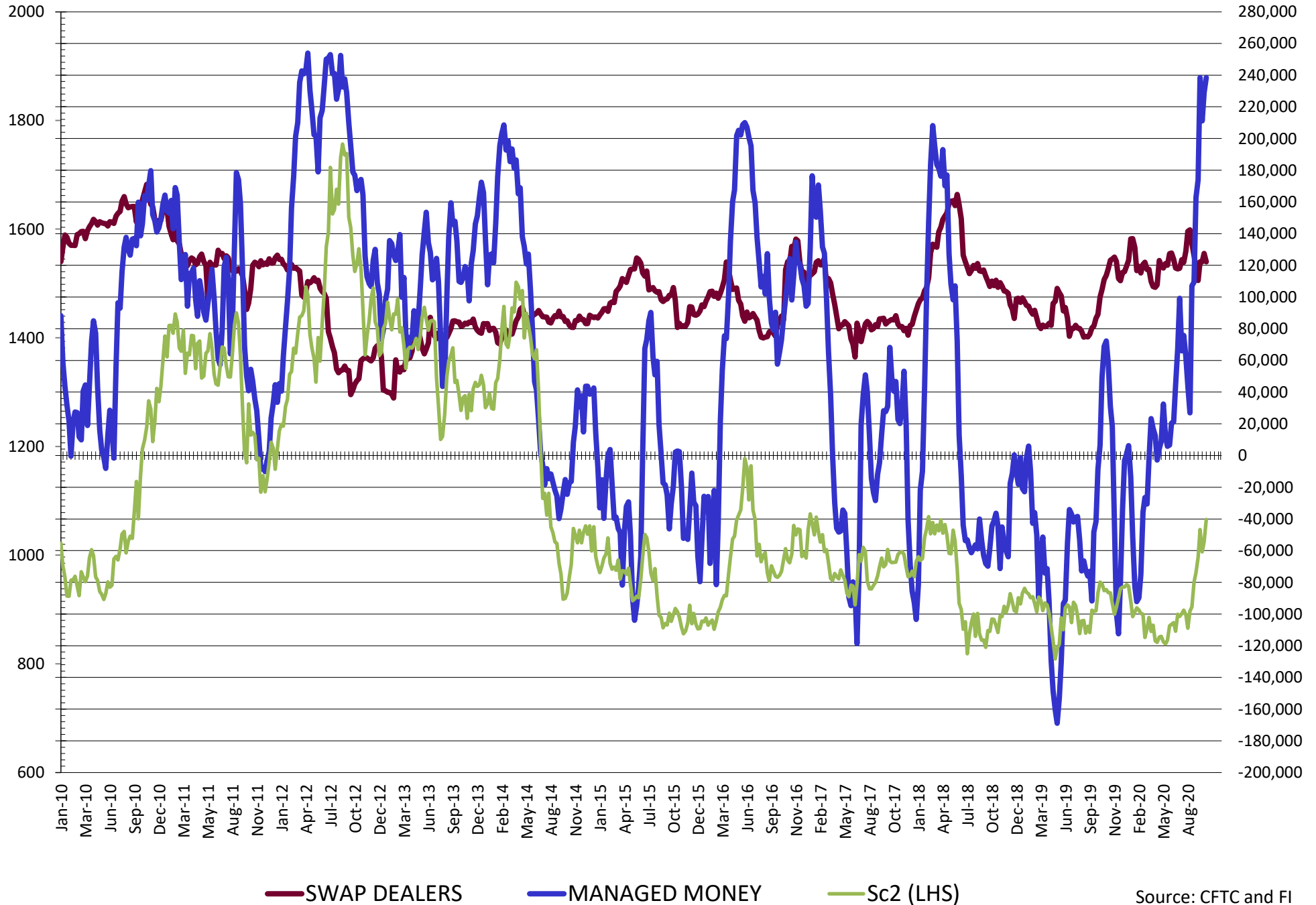
**DISAGGREGATED COMMITMENT OF TRADERS
FUTURES & OPTIONS NET POSITIONS
AS OF 10/06/2020
(IN THOUSAND CONTRACTS)**

	PRODUCER / MERCHANT / PROCESSOR / USER				(INDEX/ETF) SWAP DEALERS				(CTA/CPO/OTHER UNREGISTERED) MANAGED MONEY			
	6-Oct	29-Sep	22-Sep	15-Sep	6-Oct	29-Sep	22-Sep	15-Sep	6-Oct	29-Sep	22-Sep	15-Sep
	WHEAT											
Chicago	(108.4)	(100.2)	(100.8)	(105.5)	80.1	93.4	89.7	97.8	30.3	12.4	14.5	15.1
Kansas City	(74.6)	(58.7)	(64.6)	(59.1)	43.9	42.8	44.0	45.3	27.4	18.0	18.5	10.2
Minneapolis	(0.2)	0.5	(1.3)	0.1	2.2	2.8	2.3	2.2	(5.1)	(4.8)	(2.3)	(3.0)
All Wheat	(183.2)	(158.4)	(166.7)	(164.5)	126.2	139.0	136.0	145.2	52.6	25.6	30.7	22.3
CORN	(364.1)	(307.2)	(299.3)	(263.8)	175.8	177.4	179.2	173.2	134.5	106.8	95.9	58.6
OATS	(3.3)	(3.2)	(3.5)	(3.1)	0.1	0.1	0.1	0.1	1.4	1.2	1.2	0.8
SOYBEANS	(381.1)	(351.9)	(338.5)	(324.8)	122.2	127.5	122.2	119.0	238.4	229.0	211.1	191.8
SOY OIL	(207.3)	(220.9)	(232.4)	(224.4)	92.5	89.8	89.7	92.0	81.0	94.1	101.7	94.6
SOY MEAL	(213.5)	(195.2)	(191.1)	(165.2)	82.2	78.4	77.2	76.6	77.1	73.0	65.2	43.7

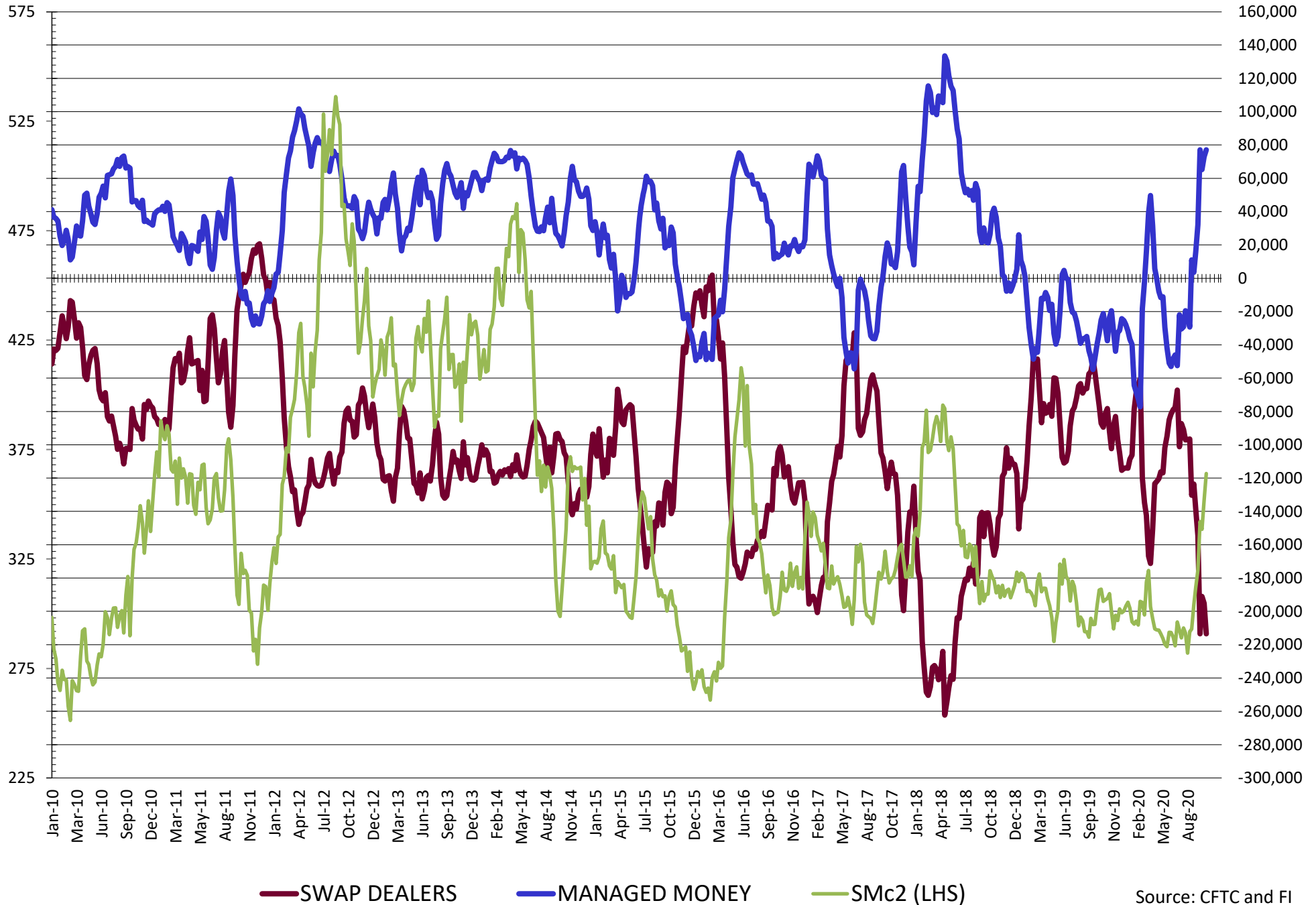
	TOTAL OPEN INTEREST				OTHER REPORTABLE				NON REPORTABLE			
	6-Oct	29-Sep	22-Sep	15-Sep	6-Oct	29-Sep	22-Sep	15-Sep	6-Oct	29-Sep	22-Sep	15-Sep
	WHEAT											
Chicago	520,547	464,516	493,573	462,819	16.1	11.4	12.9	11.7	(18.1)	(16.9)	(16.3)	(19.1)
Kansas City	263,344	239,008	249,295	246,071	3.1	(0.5)	2.3	2.7	0.3	(1.6)	(0.2)	0.9
Minneapolis	64,401	63,612	61,138	57,961	1.8	1.6	1.5	1.1	1.3	(0.1)	(0.2)	(0.3)
All Wheat	848,292	767,136	804,006	766,851	21.0	12.4	16.7	15.4	(16.5)	(18.6)	(16.7)	(18.5)
CORN	1,974,057	1,879,842	1,912,306	1,837,646	118.4	102.4	102.4	95.1	(64.6)	(79.3)	(79.3)	(79.3)
OATS	5,683	5,693	5,753	5,491	0.6	0.6	0.6	0.7	1.2	1.2	1.6	1.5
SOYBEANS	1,273,728	1,190,425	1,218,442	1,147,625	32.5	22.5	26.6	31.2	(12.0)	(27.1)	(21.5)	(17.2)
SOY OIL	525,540	517,491	528,194	523,398	20.6	22.2	21.4	19.3	13.2	14.8	19.5	18.5
SOY MEAL	526,287	499,034	539,843	510,033	29.4	21.8	25.3	19.6	24.8	22.0	23.3	25.3

SOURCE: CFTC & FI

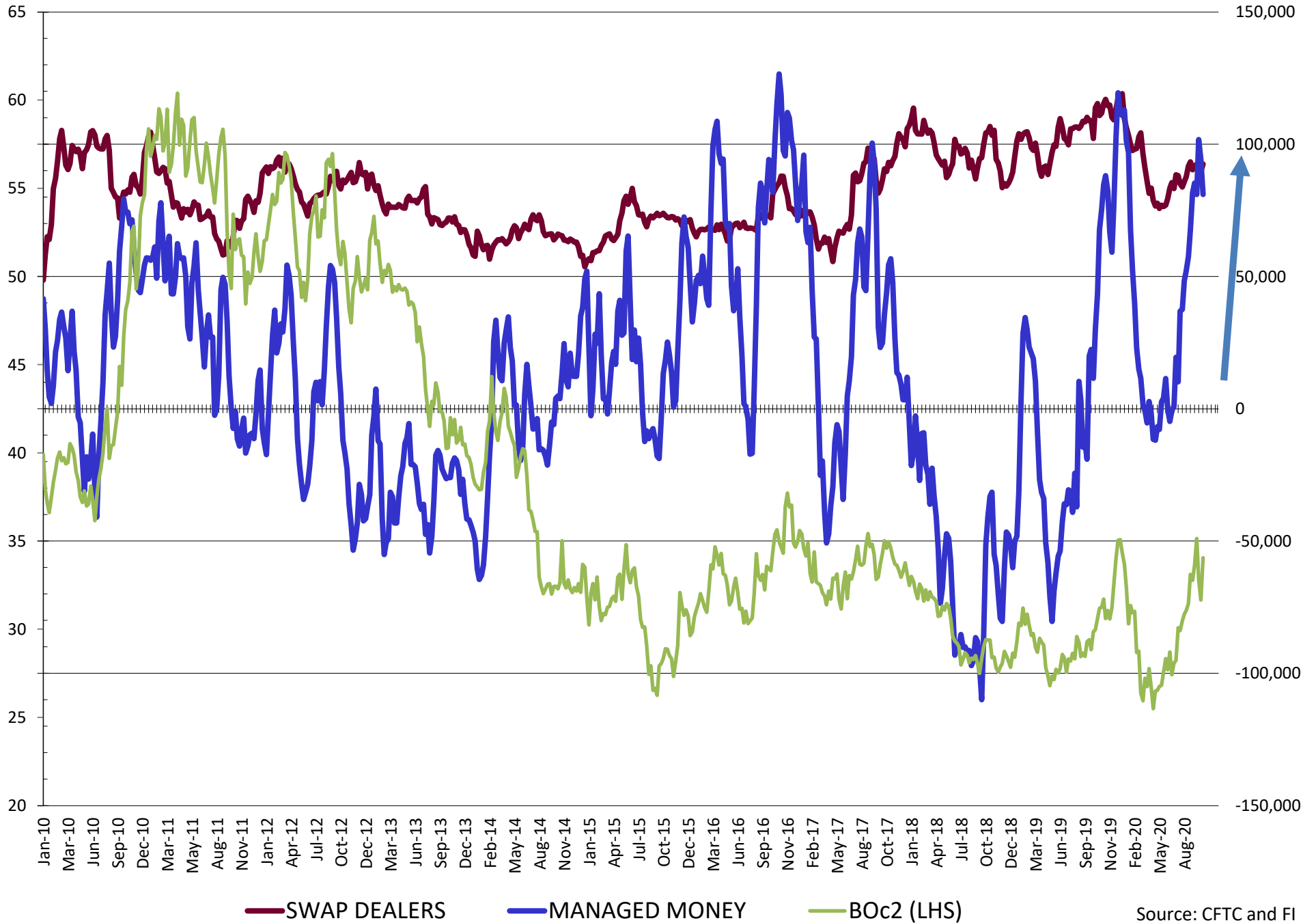
NET POSITION FUTURES AND OPTIONS OF SWAP AND MANAGED FUNDS IN SOYBEANS



NET POSITION FUTURES AND OPTIONS OF SWAP AND MANAGED FUNDS IN SOYBEAN MEAL

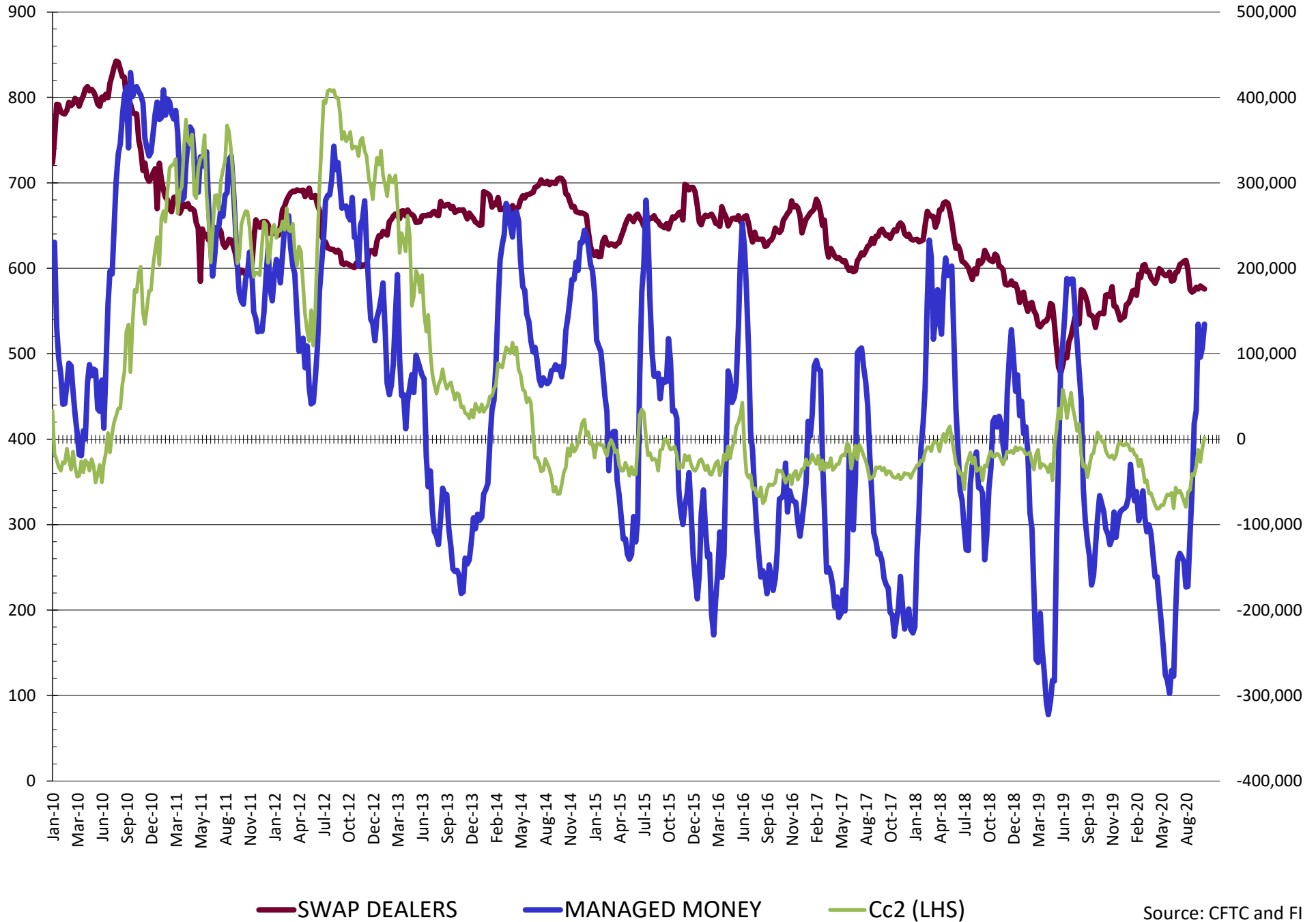


NET POSITION FUTURES AND OPTIONS OF SWAP AND MANAGED FUNDS IN SOYBEAN OIL

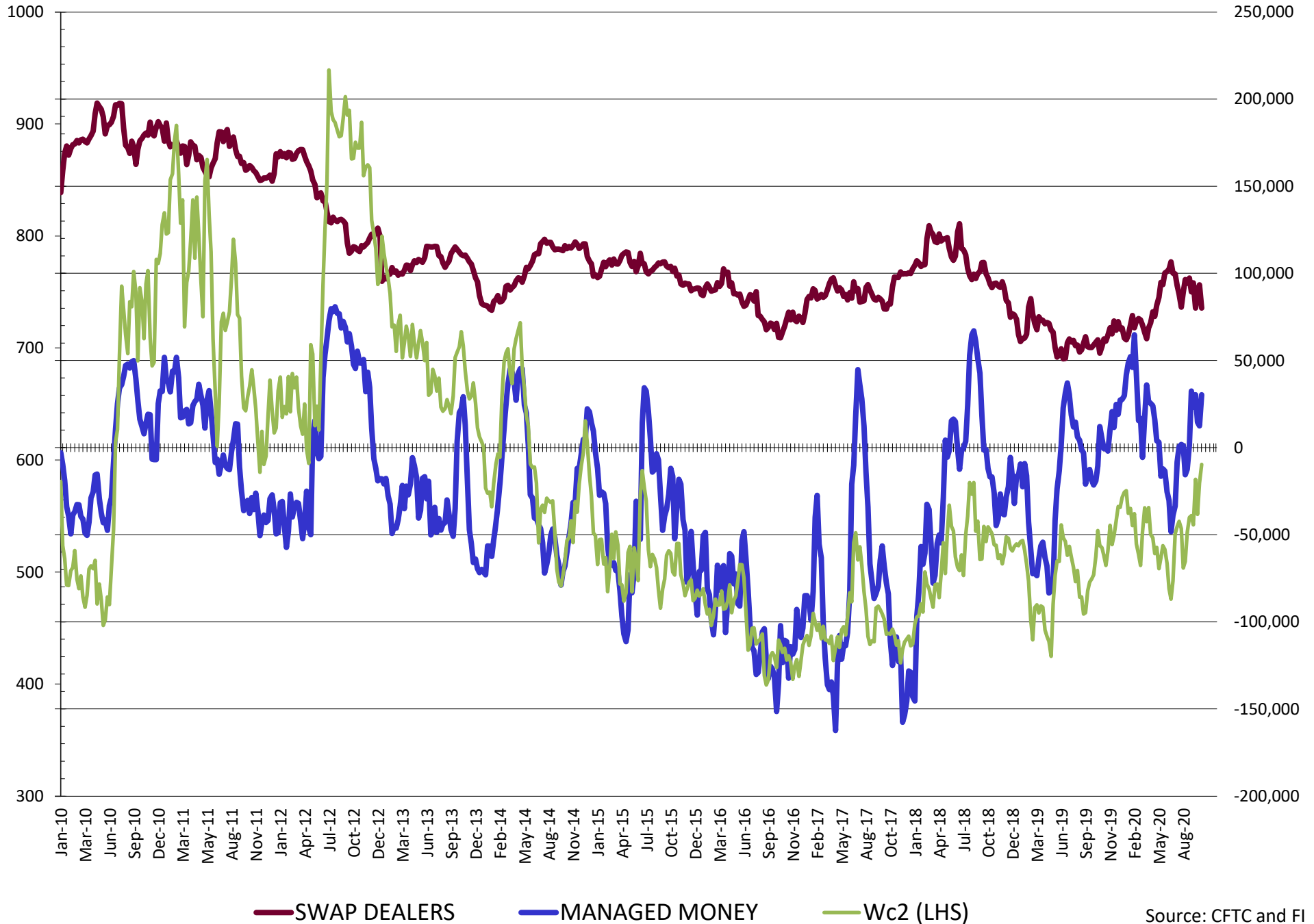


Source: CFTC and FI
10/9/2020

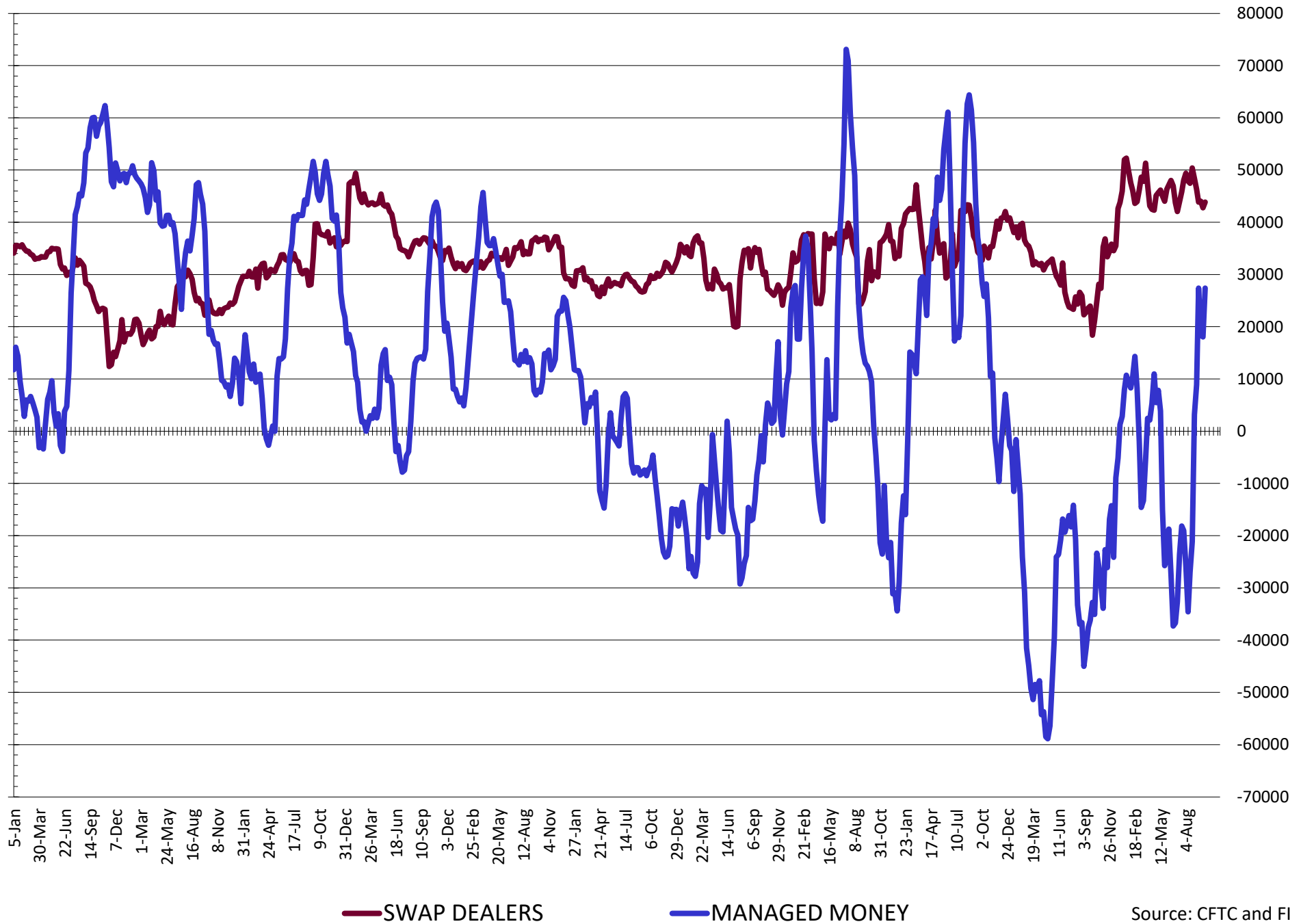
NET POSITION FUTURES AND OPTIONS OF SWAP AND MANAGED FUNDS IN CORN



NET POSITION FUTURES AND OPTIONS OF SWAP AND MANAGED FUNDS IN CHICAGO WHEAT

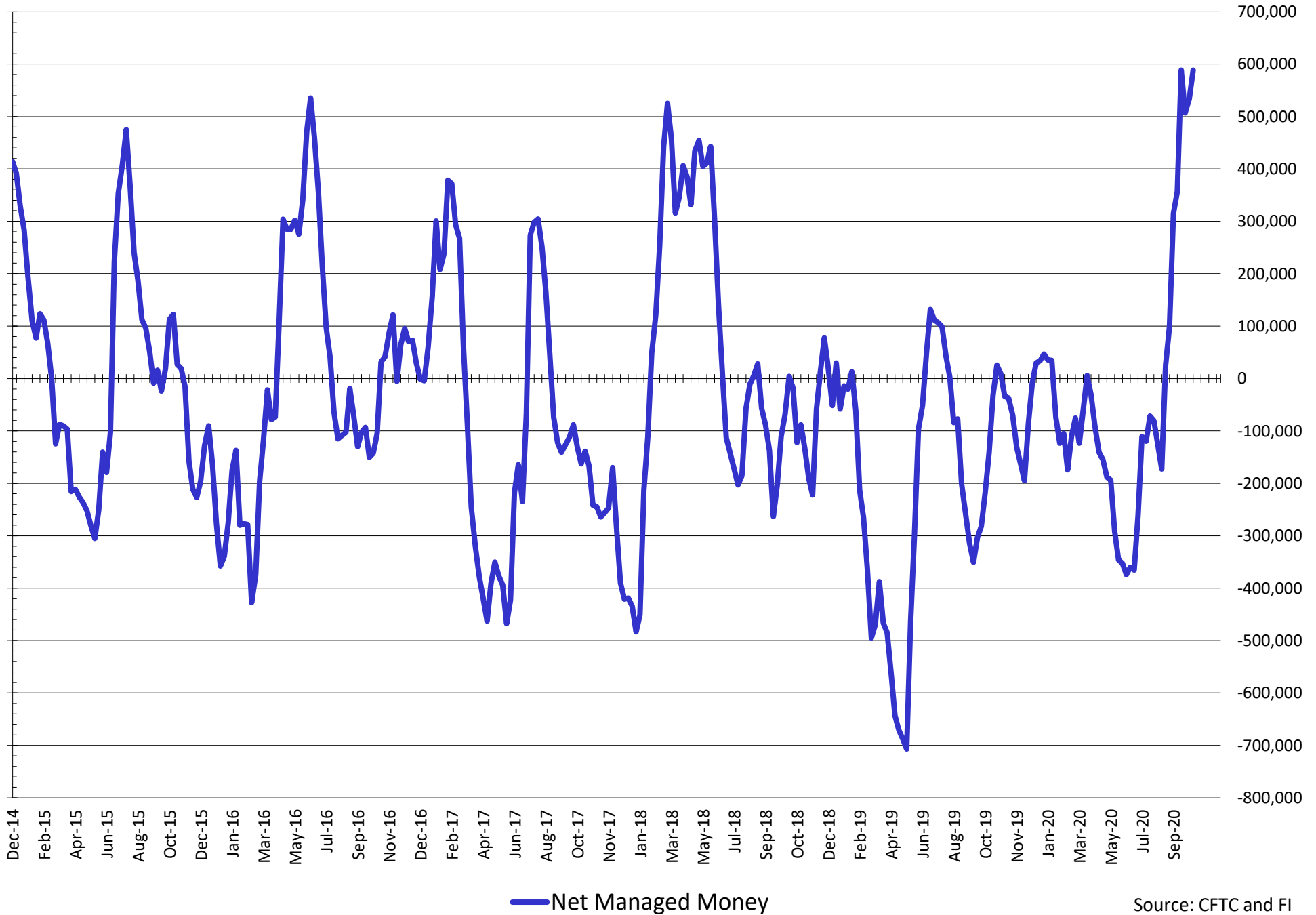


NET POSITION FUTURES AND OPTIONS OF SWAP AND MANAGED FUNDS IN KANSAS WHEAT



Source: CFTC and FI
10/9/2020

NET POSITION FUTURES AND OPTIONS OF SWAP AND MANAGED FUNDS IN COMBINED SRW, HRW, CORN, SOYBEANS, SOYMEAL AND SOYOIL



Source: CFTC and FI
10/9/2020

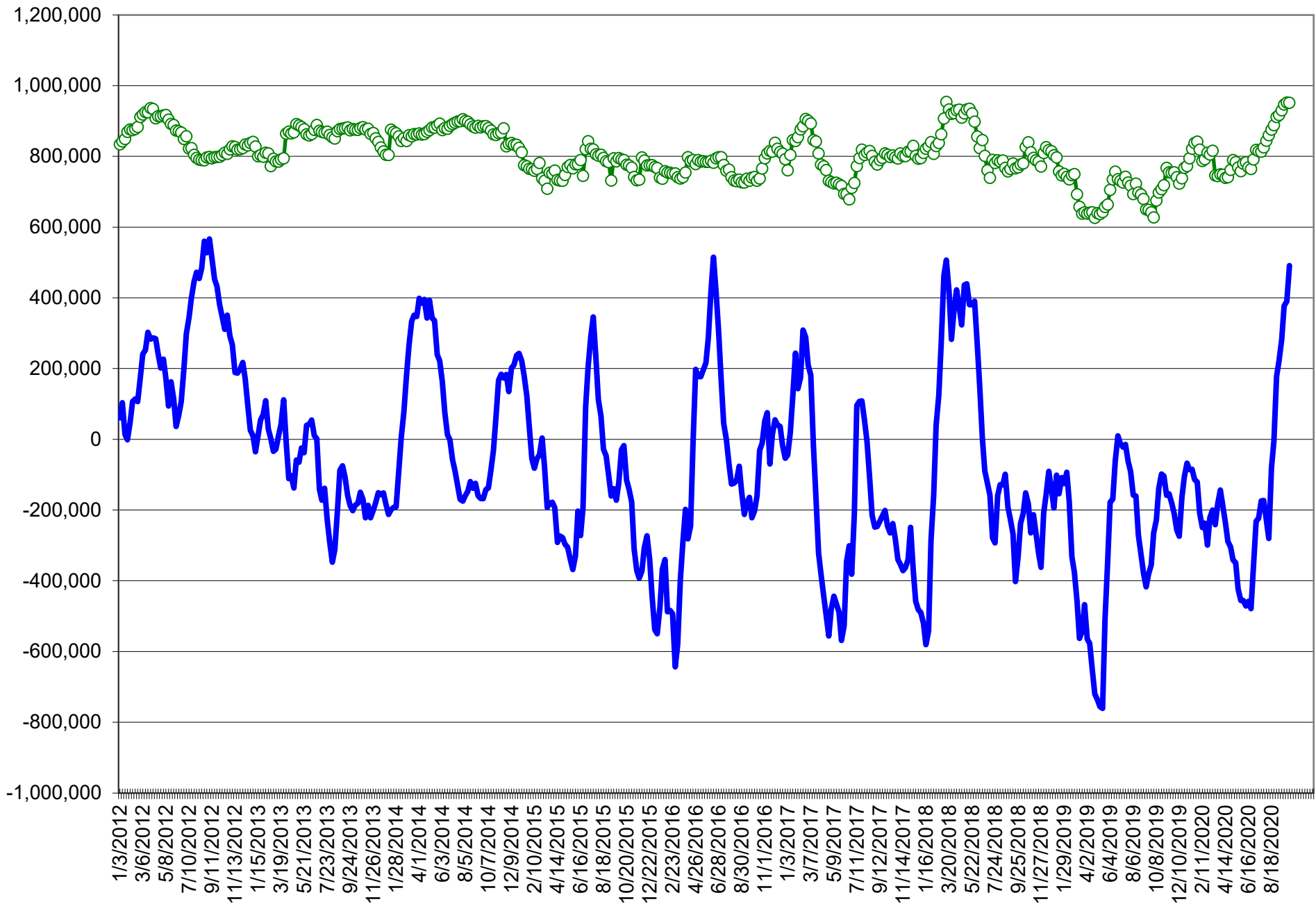
COMMITMENT OF TRADERS
FUTURES & OPTIONS NET POSITIONS (INDEX BROKEN OUT)
AS OF 10/06/2020
(IN THOUSAND CONTRACTS)

	COMMERCIAL				(FUND) NON COMMERCIAL				(SPEC) NON-REPORTABLE			
	6-Oct	29-Sep	22-Sep	15-Sep	6-Oct	29-Sep	22-Sep	15-Sep	6-Oct	29-Sep	22-Sep	15-Sep
	WHEAT											
Chicago	(121.7)	(105.4)	(107.1)	(106.9)	7.7	(16.2)	(13.4)	(13.5)	(18.1)	(16.9)	(16.3)	(19.1)
Kansas City	(76.8)	(60.8)	(66.6)	(60.6)	12.4	1.0	6.0	0.4	0.3	(1.6)	(0.2)	0.9
Minneapolis	-	-	-	-	-	-	-	-	-	-	-	-
All Wheat	(198.5)	(166.2)	(173.7)	(167.5)	20.1	(15.2)	(7.5)	(13.1)	(17.9)	(18.5)	(16.5)	(18.2)
CORN	(405.5)	(344.7)	(342.2)	(306.0)	137.5	88.1	75.6	29.9	(64.6)	(79.3)	(78.2)	(63.1)
OATS	-	-	-	-	-	-	-	-	-	-	-	-
SOYBEANS	(388.8)	(356.5)	(344.7)	(329.1)	200.9	180.4	167.6	153.2	(12.0)	(27.1)	(21.5)	(17.2)
SOY OIL	(195.8)	(208.4)	(219.1)	(208.9)	62.9	76.4	84.0	76.0	13.2	14.8	19.5	18.5
SOY MEAL	(197.5)	(177.9)	(170.6)	(145.1)	69.4	59.9	57.4	34.9	24.8	22.0	23.3	25.3

	TOTAL OPEN INTEREST				(INDEX) COMMERCIAL INDEX TRADERS				(INDEX) % NET OF TOTAL OPEN INTEREST			
	6-Oct	29-Sep	22-Sep	15-Sep	6-Oct	29-Sep	22-Sep	15-Sep	6-Oct	29-Sep	22-Sep	15-Sep
	WHEAT											
Chicago	520,547	464,516	493,573	462,819	132.1	138.5	136.9	139.4	25.4%	29.8%	27.7%	30.1%
Kansas City	263,344	239,008	249,295	246,071	64.1	61.4	60.8	59.3	24.4%	25.7%	24.4%	24.1%
Minneapolis	-	-	-	-	-	-	-	-	-	-	-	-
All Wheat	783,891	703,524	742,868	708,890	196.2	199.9	197.7	198.7	25.0%	28.4%	26.6%	28.0%
CORN	1,974,057	1,879,842	1,912,306	1,837,646	332.6	336.0	344.8	339.2	16.8%	17.9%	18.0%	18.5%
OATS	-	-	-	-	-	-	-	-	-	-	-	-
SOYBEANS	1,273,728	1,190,425	1,218,442	1,147,625	200.0	203.2	198.6	193.0	15.7%	17.1%	16.3%	16.8%
SOY OIL	525,540	517,491	528,194	523,398	119.7	117.2	115.5	114.4	22.8%	22.6%	21.9%	21.9%
SOY MEAL	526,287	499,034	539,843	510,033	103.2	96.1	89.9	85.0	19.6%	19.2%	16.7%	16.7%

SOURCE: CFTC & FI

NET POSITION FUTURES AND OPTIONS OF SPECULATORS AND INDEX FUNDS IN COMBINED SRW, HRW, CORN, SOYBEANS, SOYMEAL AND SOYOIL



Source: CFTC and FI

○ Net Index

— Net Speculator

Traditional Daily Estimate of Funds 10/6/20

	(Neg)-"Short"	Pos-"Long"			
Actual less Est.	(39.2)	(29.6)	(28.1)	(13.0)	(13.7)
	Corn	Bean	Chi. Wheat	Meal	Oil
Act.	225.7	257.3	37.3	105.4	114.5
7-Oct	15.0	6.0	12.0	6.0	(1.0)
8-Oct	(5.0)	(1.0)	(11.0)	(1.0)	(1.0)
9-Oct	40.0	16.0	(2.0)	4.0	9.0
12-Oct					
13-Oct					
FI Est. of Futures Only 10/6/20	275.7	278.3	36.3	114.4	121.5
FI Est. Futures & Options	302.9	292.0	45.5	115.4	108.6
Futures only record long	498.2	260.4	86.5	167.5	160.2
	2/1/2011	6/27/2017	8/7/2018	5/1/2018	11/1/2016
Futures only record short	(235.0)	(118.3)	(130.0)	(49.5)	(69.8)
	6/9/2020	4/30/2019	4/25/2017	3/1/2016	9/18/2018
Futures and options record net long	458.5	259.8	64.8	132.1	159.2
	9/28/2010	5/1/2012	8/7/2012	5/1/2018	1/1/2016
Futures and options record net short	(270.6)	(132.0)	(143.3)	(64.1)	(77.8)
	4/26/2019	4/30/2019	4/25/2017	3/1/2016	9/18/2018

Managed Money Daily Estimate of Funds 10/6/20

	Corn	Bean	Chi. Wheat	Meal	Oil
Latest CFTC Fut. Only	117.3	230.7	28.1	75.7	81.0
Latest CFTC F&O	134.5	238.4	30.3	77.1	81.0
FI Est. Managed Fut. Only	167	252	27	85	88
FI Est. Managed Money F&O	184	259	29	86	88

Index Funds Latest Positions (as of last Tuesday)

Index Futures & Options	332.6	200.0	132.1	NA	119.7
Change From Previous Week	(3.3)	(3.2)	(6.4)	NA	2.5

Source: Reuters, CFTC & FI (FI est. are noted with latest date)

Disclaimer

TO CLIENTS/PROSPECTS OF FUTURES INTERNATIONAL, SEE RISK DISCLOSURE BELOW:

THIS COMMUNICATION IS CONVEYED AS A SOLICITATION FOR ENTERING INTO A DERIVATIVES TRANSACTION.

Any trading recommendations and market or other information to Customer by Futures International (FI), although based upon information obtained from sources believed by FI to be reliable may not be accurate and may be changed without notice to customer. FI makes no guarantee as to the accuracy or completeness of any of the information or recommendations furnished to Customer. Customer understands that FI, its managers, employees and/or affiliates may have a position in commodity futures, options or other derivatives which may not be consistent with the recommendations furnished by FI to Customer.

The risk of trading futures and options and other derivatives involves a substantial risk of loss and is not suitable for all persons. In purchasing an option, the risk is limited to the premium paid, and all commissions and fees involved with the trade. When an option is shorted or written, the writer of the option has unlimited risk with respect to the option written. The use of options strategies such as a straddles and strangles involve multiple option positions and may substantially increase the amount of commissions and fees paid to execute the strategy. Option prices do not necessarily move in tandem with cash or futures prices. Each person must consider whether a particular trade, combination of trades or strategy is suitable for that person's financial means and objectives.

This material may include discussions of seasonal patterns, however, futures prices have already factored in the seasonal aspects of supply and demand, and seasonal patterns are no indication of future market trends. Finally, past performance is not indicative of future results.

This communication may contain links to third party websites which are not under the control of FI and FI is not responsible for their content. Products and services are offered only in jurisdictions where solicitation and sale are lawful, and in accordance with applicable laws and regulations in each such jurisdiction.