

# CFTC COMMITMENT OF TRADERS REPORT

As of 8/11/2020

## TRADITIONAL FUNDS net position changes

Wed to Tue, in 000 contracts

	Corn	Bean	Meal	Oil	Chi. Wheat	KC Wheat	Min Wheat
Futures Only	(1.5)	(13.7)	(3.4)	2.0	(9.8)	(7.6)	(2.8)
Futures & Options Combined	2.3	(17.4)	(5.3)	3.0	(16.6)	(7.7)	(3.0)

## TRADITIONAL COMMERCIAL net position changes

	Corn	Bean	Meal	Oil	Chi. Wheat	KC Wheat	Min Wheat
Futures Only	(1.1)	14.8	(1.5)	0.4	10.5	7.7	3.0
Futures & Options Combined	(6.4)	20.4	0.5	(0.7)	16.8	7.5	3.1

## MANAGED MONEY net position changes

	Corn	Bean	Meal	Oil	Chi. Wheat	KC Wheat	Min Wheat
Futures Only	1.3	(15.4)	(8.2)	3.9	(17.7)	(8.7)	(2.5)
Futures & Options Combined	0.5	(17.4)	(8.3)	3.8	(16.7)	(8.8)	(2.5)

## SWAP DEALERS net position changes

	Corn	Bean	Meal	Oil	Chi. Wheat	KC Wheat	Min Wheat
Futures Only	(2.3)	0.8	(0.1)	1.8	6.8	(1.5)	(0.1)
Futures & Options Combined	(10.2)	0.9	0.1	1.9	7.4	(1.5)	(0.2)

## PRODUCERS/END USERS net position changes

	Corn	Bean	Meal	Oil	Chi. Wheat	KC Wheat	Min Wheat
Futures Only	1.2	14.0	(1.3)	(1.4)	3.7	9.2	3.1
Futures & Options Combined	3.8	19.6	0.4	(2.6)	9.4	9.0	3.3

## INDEX net position changes

	Corn	Bean	Meal	Oil	Chi. Wheat	KC Wheat	Min Wheat
Futures & Options Combined	(1.7)	6.1	0.7	5.1	5.7	(0.2)	NA

## SUPPLEMENTAL NON-COMMERCIAL net position changes

	Corn	Bean	Meal	Oil	Chi. Wheat	KC Wheat	Min Wheat
Futures & Options Combined	6.6	(24.0)	(7.0)	(0.1)	(20.6)	(6.8)	NA

## OPEN INTEREST net position changes

Wed to Tue, in 000 contracts

	Corn	Bean	Meal	Oil	Chi. Wheat	KC Wheat	Min Wheat
Futures Only	(49.9)	(1.9)	10.6	6.7	9.1	(8.2)	7.0
Futures & Options Combined	(40.4)	8.4	14.9	6.6	26.0	(7.3)	7.2

Source: CFTC and FI

Wed to Tue, in 000 contracts

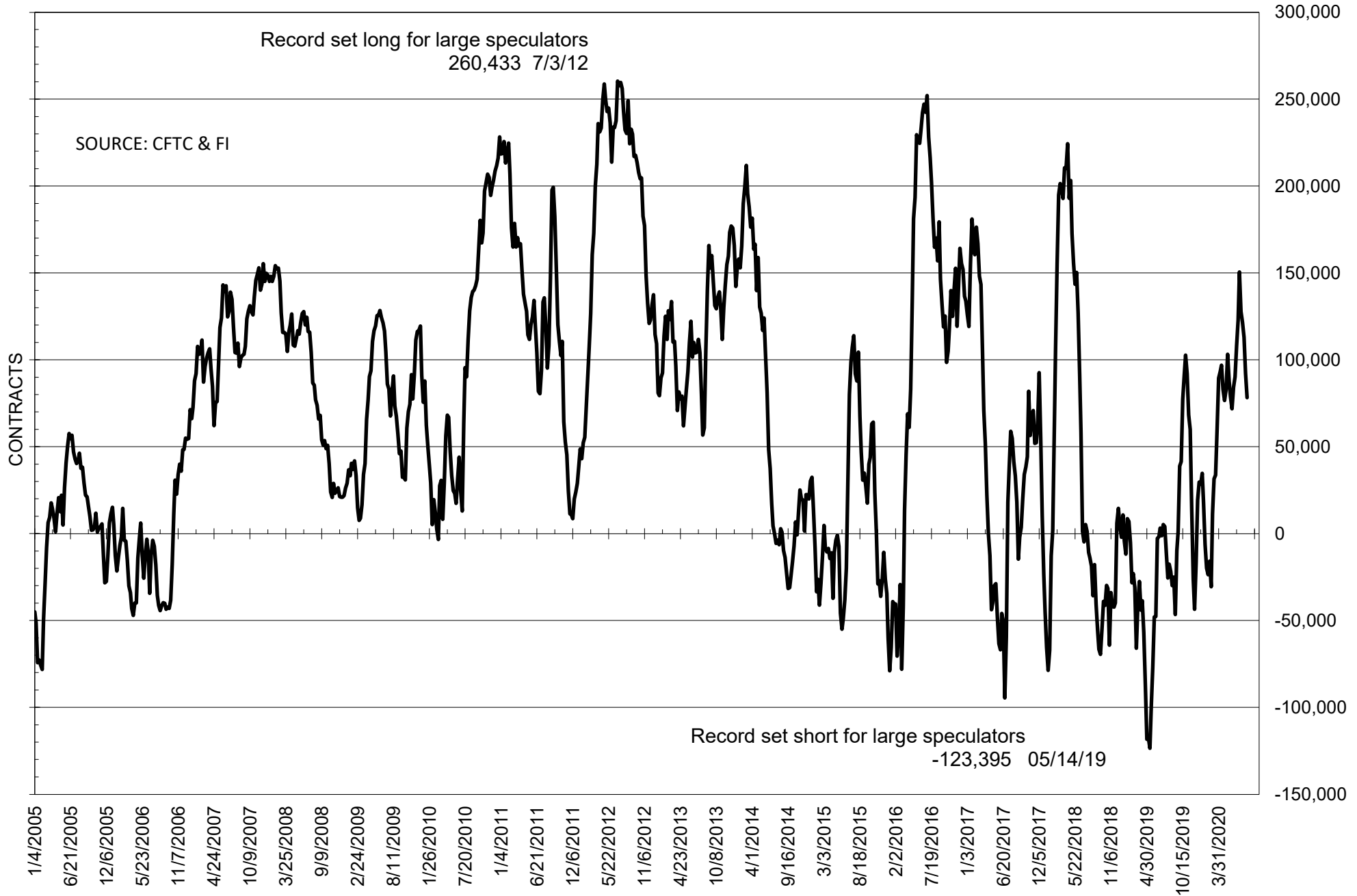
**COMMITMENT OF TRADERS  
FUTURES ONLY NET POSITIONS  
AS OF 08/11/2020  
(IN THOUSAND CONTRACTS)**

	COMMERCIAL				(FUND) NON COMMERCIAL				(SPEC) NON-REPORTABLE			
	11-Aug	4-Aug	28-Jul	21-Jul	11-Aug	4-Aug	28-Jul	21-Jul	11-Aug	4-Aug	28-Jul	21-Jul
	<b>WHEAT</b>											
<b>Chicago</b>	17.7	7.2	2.5	1.7	3.6	13.4	16.7	18.8	-21.3	-20.6	-19.2	-20.5
<b>Kansas City</b>	23.2	15.5	11.3	12.7	-26.2	-18.6	-14.5	-15.7	3.0	3.0	3.2	3.0
<b>Minneapolis</b>	18.9	15.9	14.5	13.8	-21.7	-18.9	-18.0	-17.7	2.9	3.0	3.6	3.9
<b>All Wheat</b>	59.8	38.7	28.3	28.1	-44.4	-24.1	-15.9	-14.6	-15.4	-14.6	-12.4	-13.6
<b>CORN</b>	157.5	158.6	117.4	112.2	-149.9	-148.4	-102.4	-98.9	-7.6	-10.1	-15.0	-13.4
<b>OATS</b>	-2.5	-2.8	-2.9	-2.7	2.0	2.3	2.2	2.0	0.5	0.5	0.6	0.7
<b>SOYBEANS</b>	-66.8	-81.7	-107.4	-118.3	78.3	92.0	113.0	121.5	-11.4	-10.3	-5.6	-3.2
<b>SOY OIL</b>	-70.0	-70.4	-54.1	-56.2	56.0	53.9	43.2	45.8	14.1	16.5	10.9	10.5
<b>SOY MEAL</b>	-25.3	-23.8	-30.6	-26.2	7.3	10.7	14.9	6.6	18.0	13.2	15.7	19.6

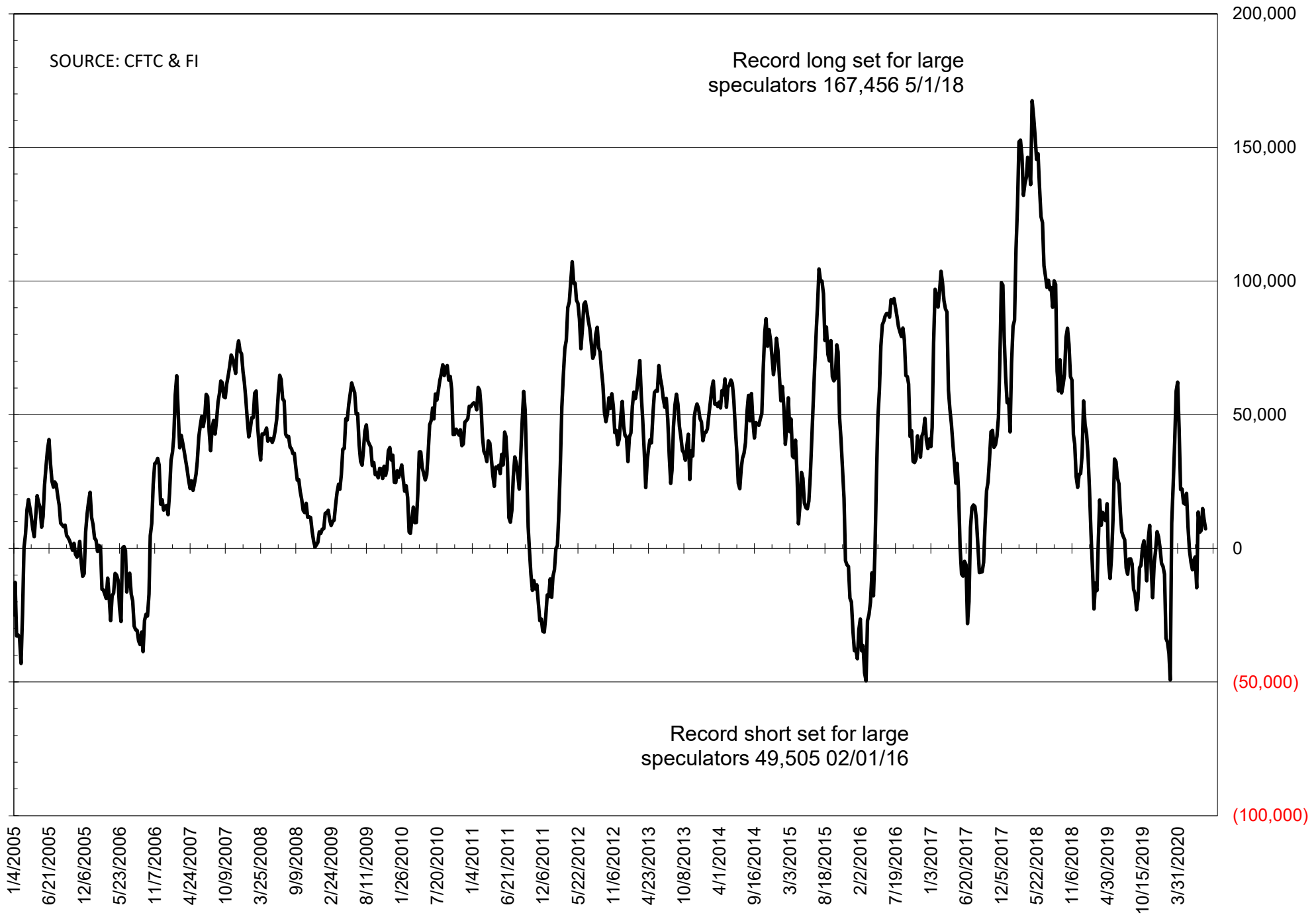
	TOTAL OPEN INTEREST				NEARBY FUTURES PRICE					11-Aug-20 LAST REPORTED % HELD BY TRADERS			
	11-Aug	4-Aug	28-Jul	21-Jul	U Latest	U 11-Aug	U 4-Aug	Q/U 28-Jul	Q/U 21-Jul	LARGE FUND		SMALL	
										LONG	SHORT	LONG	SHORT
<b>WHEAT</b>													
<b>Chicago</b>	389649	380509	372308	373461	495.00	508.50	508.50	523.50	527.75	0%	29%	0%	12%
<b>Kansas City</b>	263114	271336	267660	261941	417.25	422.25	422.25	436.75	442.25	0%	34%	0%	8%
<b>Minneapolis</b>	79627	72629	70408	68550	490.75	501.75	501.75	506.25	510.50	0%	42%	0%	14%
<b>CORN</b>	1589059	1638917	1599450	1523220	311.75	308.50	308.50	320.25	322.75	0%	28%	0%	11%
<b>OATS</b>	4495	4593	4548	4271	264.00	272.25	272.25	286.00	279.00	0%	0%	0%	20%
<b>SOYBEANS</b>	833360	835308	833537	837841	870.75	879.75	879.75	897.00	896.50	21%	12%	6%	7%
<b>SOY OIL</b>	442474	435763	432099	444915	30.65	31.05	31.05	29.40	30.04	0%	10%	0%	6%
<b>SOY MEAL</b>	447208	436579	429852	433462	284.30	285.50	285.50	288.90	286.00	0%	17%	0%	6%

SOURCE: CFTC & FI

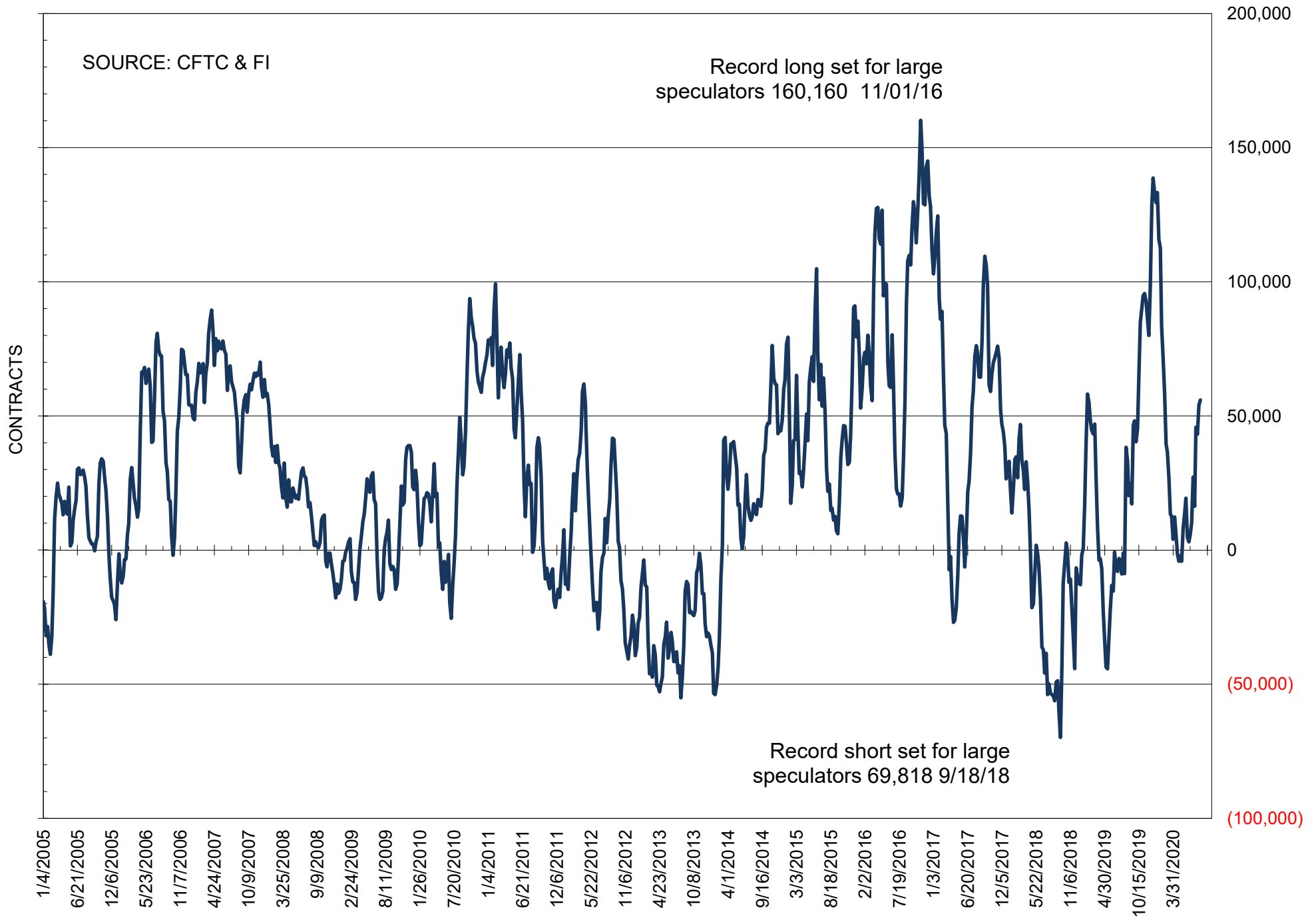
# NET POSITION OF FUTURES ONLY LARGE SPECS IN SOYBEANS



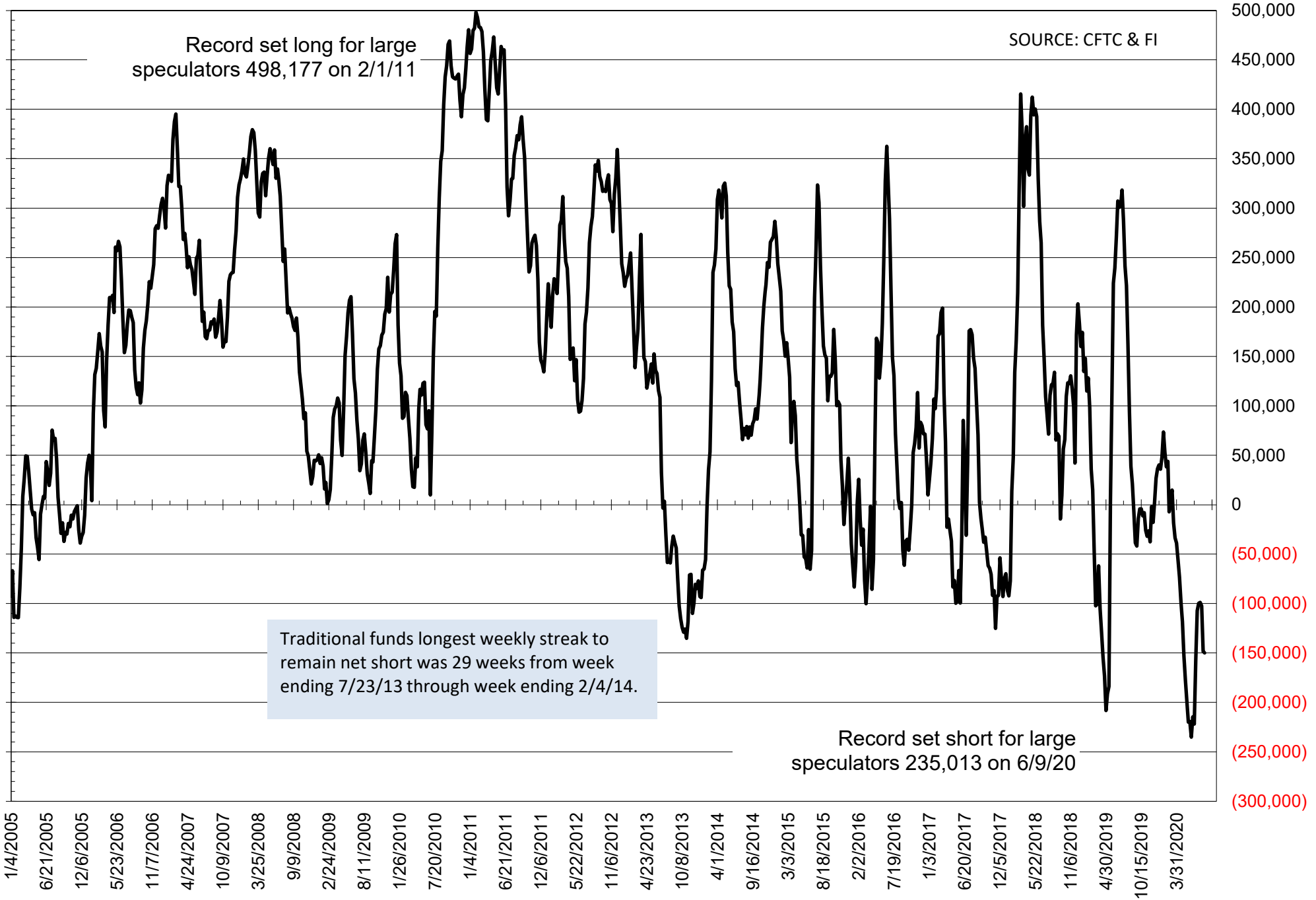
# NET POSITION OF FUTURES ONLY LARGE SPECS IN SOYMEAL



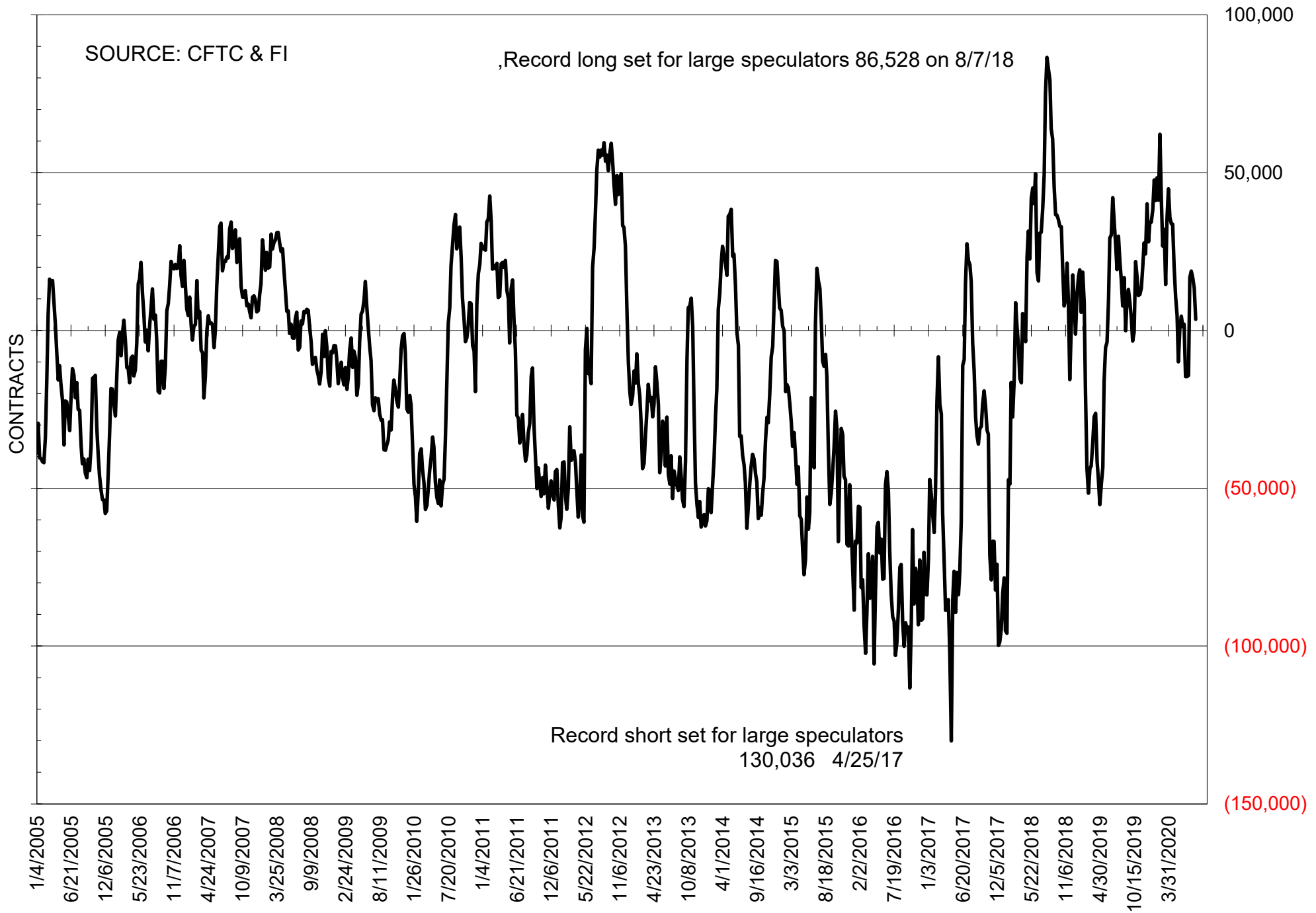
# NET POSITION OF FUTURES ONLY LARGE SPECS IN SOYOIL



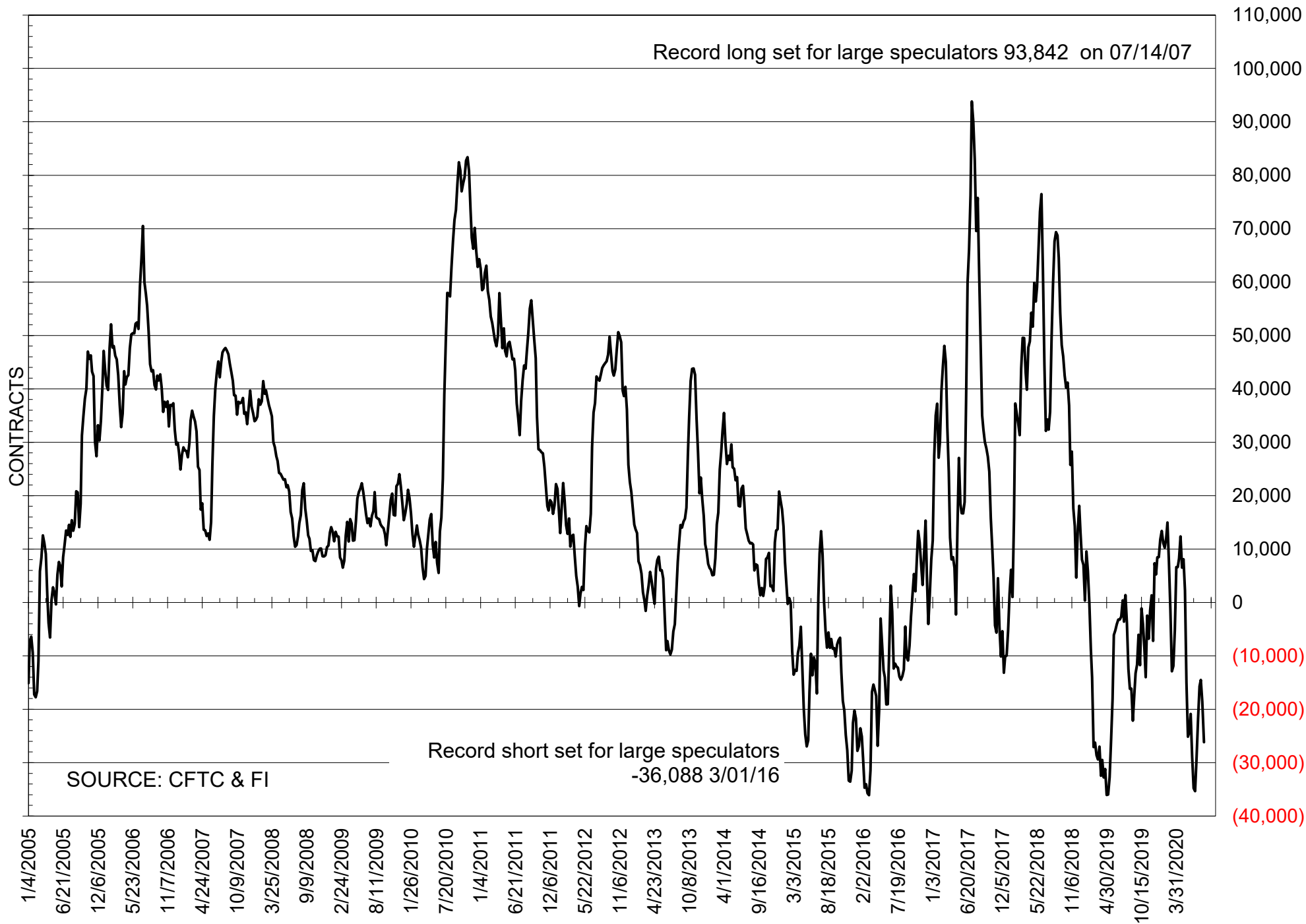
# NET POSITION OF LARGE SPECULATORS IN CORN



# NET POSITION OF FUTURES ONLY LARGE SPECS IN CHICAGO WHEAT

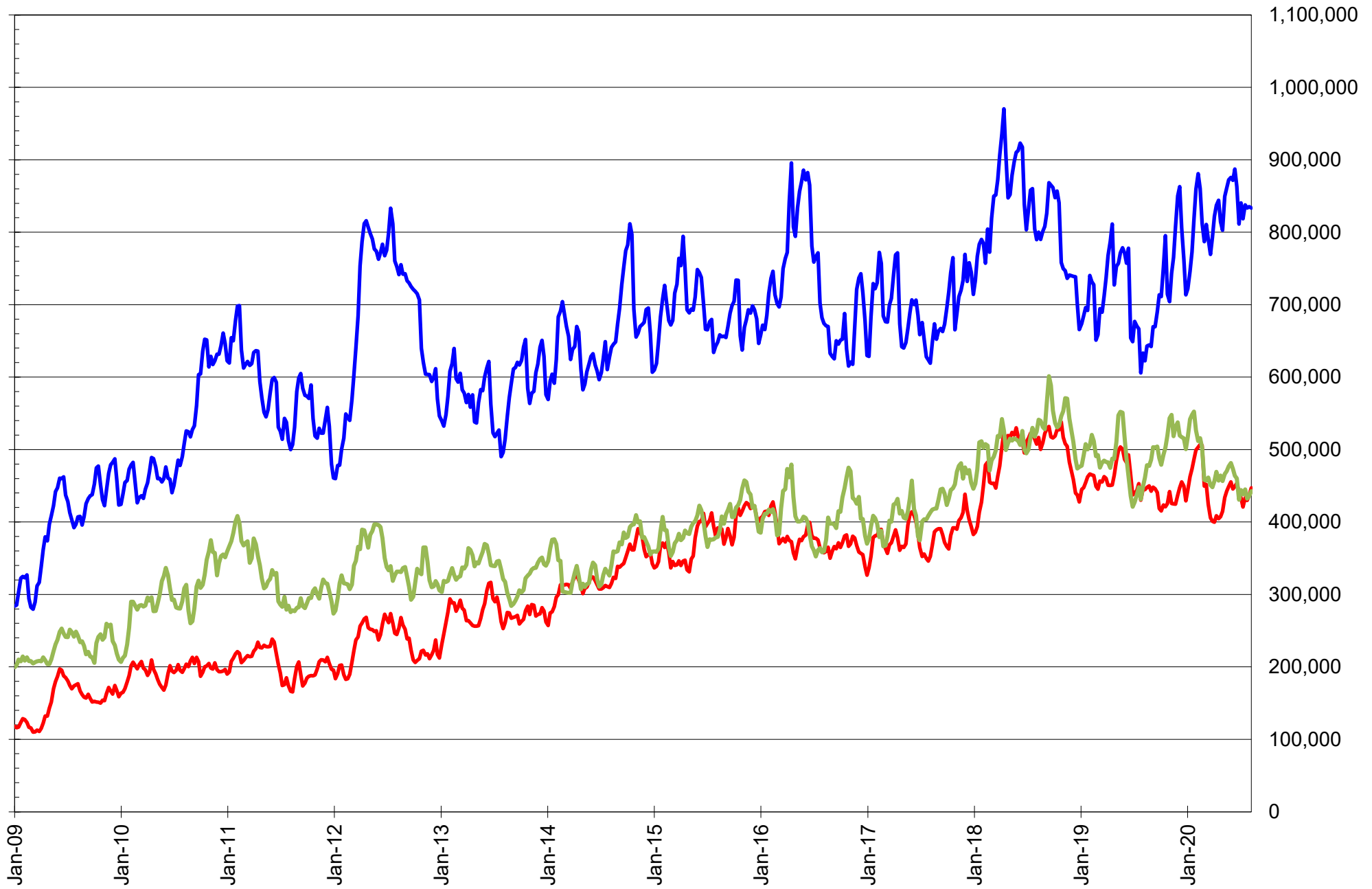


# NET POSITION OF LARGE SPECULATORS IN KANSAS CITY WHEAT





# TOTAL OPEN INTEREST IN SOYBEANS, MEAL AND OIL, FUTURES ONLY



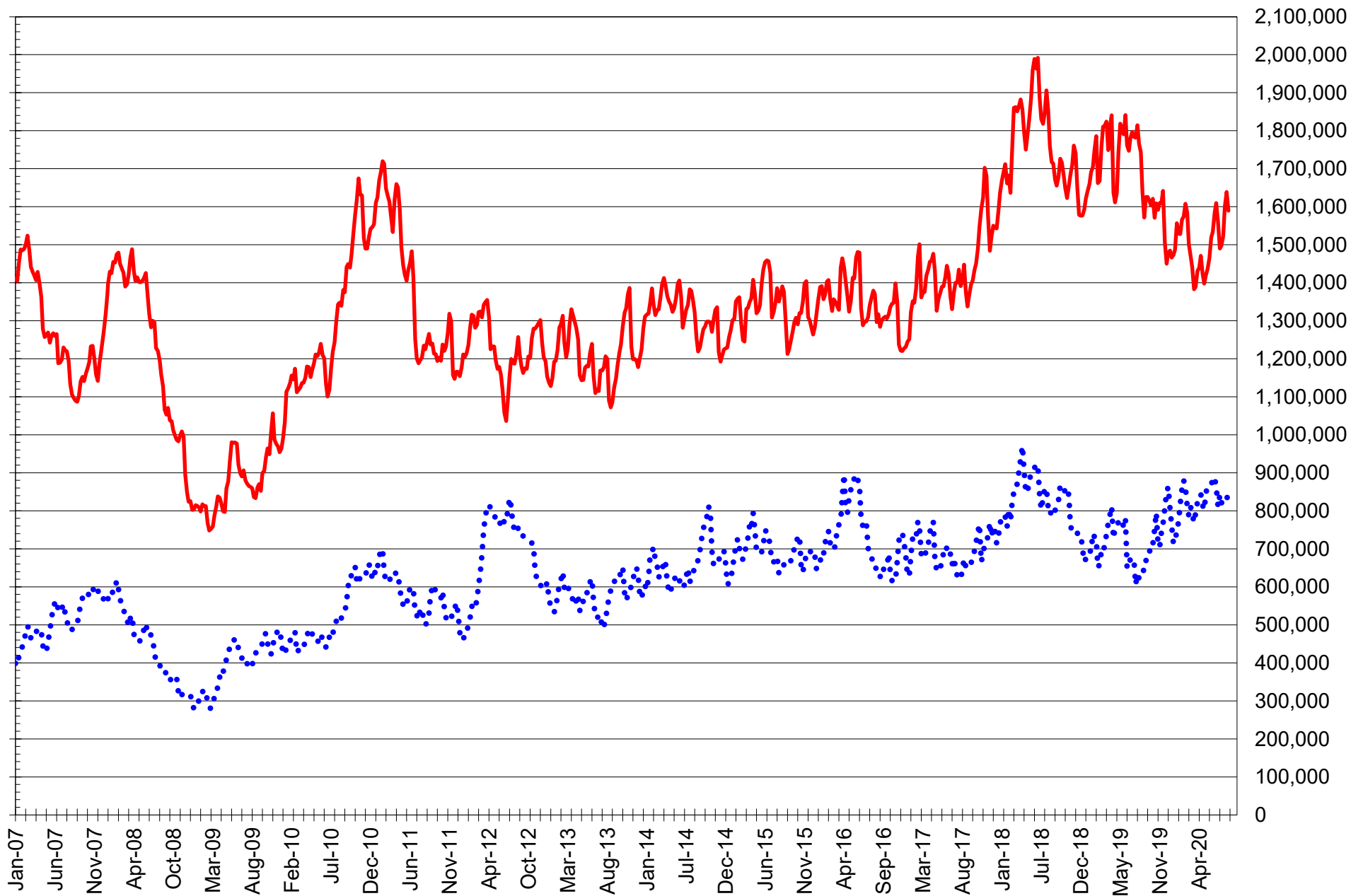
SOURCE: CFTC & FI

— SOYBEANS

— SOYBEAN MEAL

— SOYBEAN OIL

# TOTAL OPEN INTEREST IN CORN AND SOYBEANS, FUTURES ONLY



SOURCE: CFTC & FI

— CORN

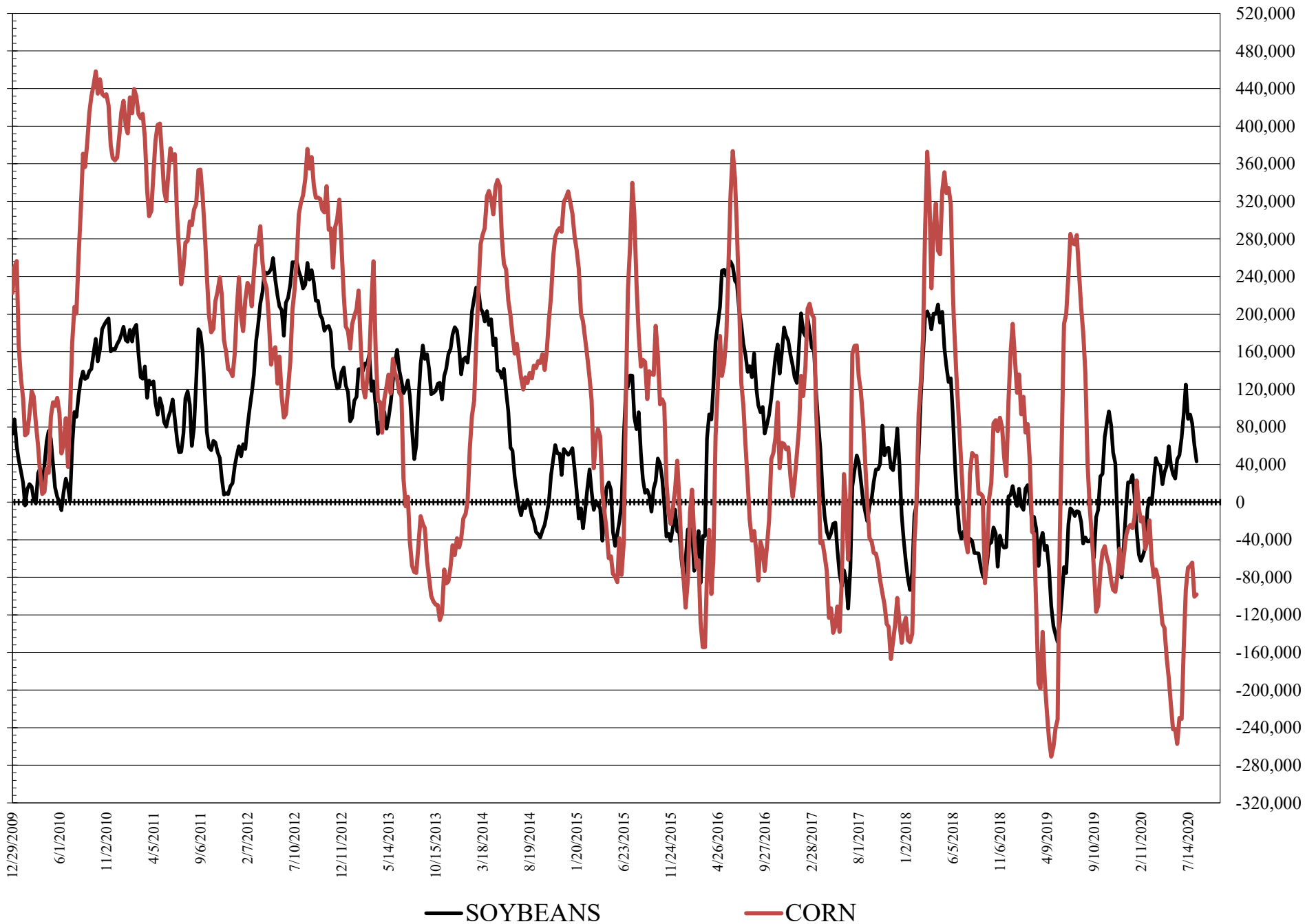
..... SOYBEANS

**COMMITMENT OF TRADERS  
FUTURES & OPTIONS NET POSITIONS  
AS OF 08/11/2020  
(IN THOUSAND CONTRACTS)**

	COMMERCIAL				(FUND) NON COMMERCIAL				(SPEC) NON-REPORTABLE			
	11-Aug	4-Aug	28-Jul	21-Jul	11-Aug	4-Aug	28-Jul	21-Jul	11-Aug	4-Aug	28-Jul	21-Jul
	11-Aug				11-Aug				11-Aug			
<b>WHEAT</b>												
Chicago	22.6	5.7	3.0	7.1	-0.4	16.1	17.4	14.9	-22.2	-21.9	-20.4	-22.0
Kansas City	31.7	24.2	17.9	17.7	-35.5	-27.8	-21.7	-21.3	3.8	3.6	3.8	3.6
Minneapolis	19.6	16.5	15.0	14.3	-22.6	-19.6	-18.7	-18.4	3.0	3.1	3.6	4.1
All Wheat	73.8	46.4	36.0	39.1	-58.5	-31.3	-22.9	-24.8	-15.3	-15.1	-13.0	-14.3
<b>CORN</b>	140.5	146.8	109.8	110.7	-98.2	-100.6	-64.5	-67.7	-42.2	-46.3	-45.3	-43.0
<b>OATS</b>	-2.3	-2.6	-2.8	-2.6	1.8	2.2	2.1	1.9	0.5	0.5	0.6	0.7
<b>SOYBEANS</b>	-26.1	-46.5	-76.9	-89.2	43.4	60.8	84.0	93.0	-17.2	-14.3	-7.1	-3.8
<b>SOY OIL</b>	-69.1	-68.3	-54.1	-57.5	54.3	51.2	42.4	46.3	14.8	17.1	11.7	11.1
<b>SOY MEAL</b>	-10.6	-11.1	-20.0	-14.1	-9.1	-3.7	2.5	-7.5	19.7	14.8	17.5	21.6
	TOTAL OPEN INTEREST				COMMERCIALS		% HELD BY TRADERS LARGE (FUNDS)		SMALL (NON-REP)			
	11-Aug	4-Aug	28-Jul	21-Jul	LONG	SHORT	LONG	SHORT	LONG	SHORT		
	11-Aug				11-Aug		11-Aug		11-Aug			
<b>WHEAT</b>												
Chicago	505,974	479,929	462,888	483,480	36%	31%	21%	22%	6%	10%		
Kansas City	286,378	293,675	288,210	285,181	47%	36%	19%	31%	9%	7%		
Minneapolis	81,313	74,156	71,924	69,996	60%	36%	14%	42%	18%	14%		
<b>CORN</b>	1,990,550	2,030,923	1,950,332	1,905,548	47%	40%	15%	19%	10%	13%		
<b>OATS</b>	4,834	4,910	4,858	4,585								
<b>SOYBEANS</b>	984,159	975,735	967,977	994,119	53%	56%	14%	10%	6%	8%		
<b>SOY OIL</b>	476,630	470,078	460,732	481,302	50%	65%	20%	9%	9%	6%		
<b>SOY MEAL</b>	491,275	476,417	466,434	473,404	56%	58%	14%	16%	10%	6%		

SOURCE: CFTC & FI

# NET POSITION FUTURES AND OPTIONS OF LARGE SPECULATORS IN SOYBEANS AND CORN



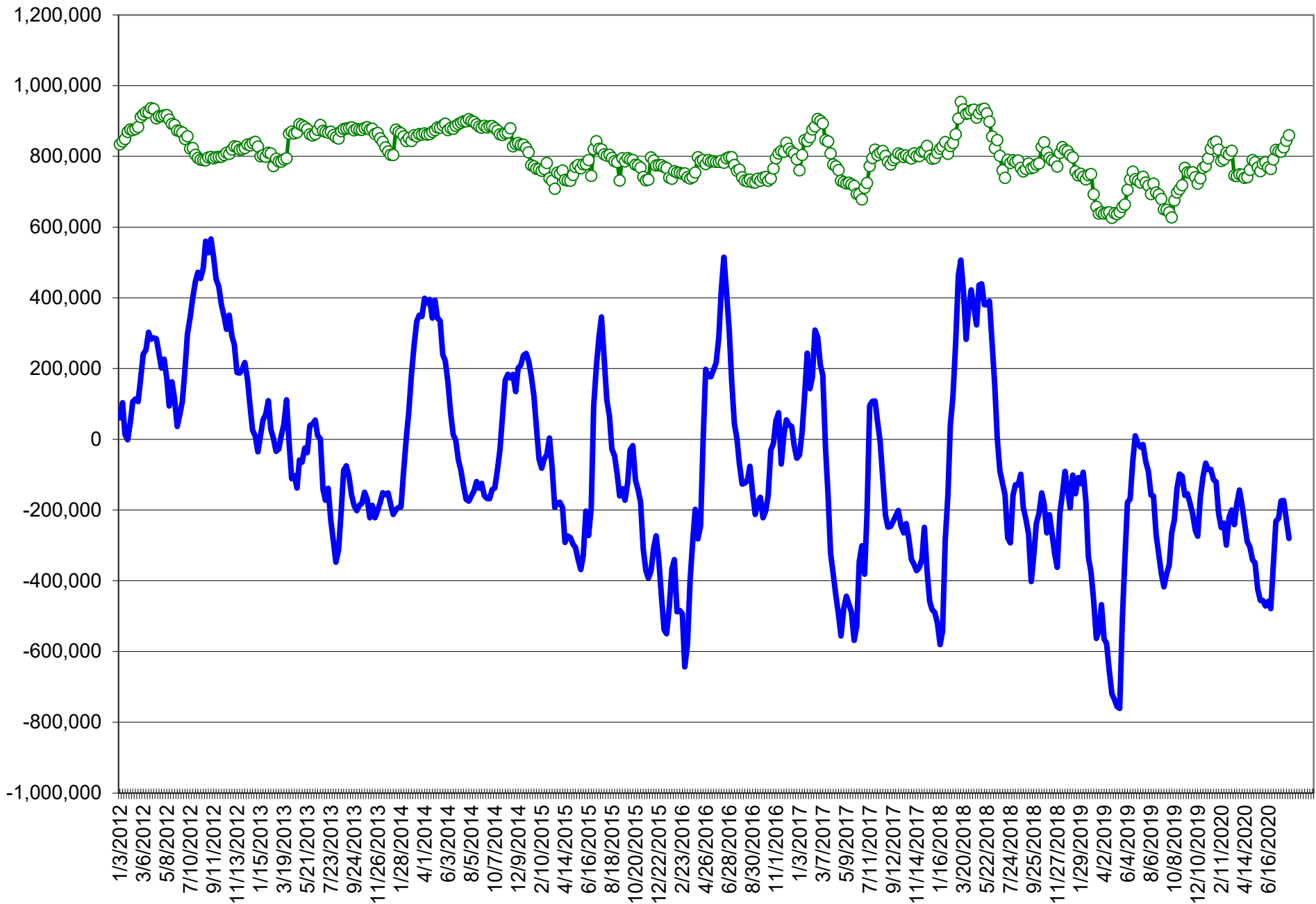
**COMMITMENT OF TRADERS**  
**FUTURES & OPTIONS NET POSITIONS (INDEX BROKEN OUT)**  
**AS OF 08/11/2020**  
(IN THOUSAND CONTRACTS)

	COMMERCIAL				(FUND) NON COMMERCIAL				(SPEC) NON-REPORTABLE			
	11-Aug	4-Aug	28-Jul	21-Jul	11-Aug	4-Aug	28-Jul	21-Jul	11-Aug	4-Aug	28-Jul	21-Jul
	WHEAT											
Chicago	(78.1)	(93.3)	(86.7)	(84.8)	(33.4)	(12.8)	(16.9)	(19.6)	(22.2)	(21.9)	(20.4)	(22.0)
Kansas City	(18.6)	(25.4)	(32.1)	(30.1)	(39.9)	(33.2)	(27.6)	(27.4)	3.8	3.6	3.8	3.6
Minneapolis	-	-	-	-	-	-	-	-	-	-	-	-
All Wheat	(96.8)	(118.7)	(118.9)	(114.9)	(73.3)	(46.0)	(44.4)	(47.0)	(18.3)	(18.3)	(16.6)	(18.4)
CORN	(72.9)	(64.0)	(103.5)	(100.5)	(194.3)	(200.8)	(161.5)	(165.0)	(42.2)	(46.3)	(45.3)	(43.0)
OATS	-	-	-	-	-	-	-	-	-	-	-	-
SOYBEANS	(158.1)	(179.1)	(198.2)	(205.8)	(8.1)	15.9	29.6	39.1	(17.2)	(14.3)	(7.1)	(3.8)
SOY OIL	(138.9)	(136.2)	(118.9)	(121.3)	26.0	26.1	17.7	23.0	14.8	17.1	11.7	11.1
SOY MEAL	(69.2)	(70.7)	(73.0)	(64.0)	(30.7)	(23.7)	(14.5)	(24.5)	19.7	14.8	17.5	21.6

	TOTAL OPEN INTEREST				(INDEX) COMMERCIAL INDEX TRADERS				(INDEX) % NET OF TOTAL OPEN INTEREST			
	11-Aug	4-Aug	28-Jul	21-Jul	11-Aug	4-Aug	28-Jul	21-Jul	11-Aug	4-Aug	28-Jul	21-Jul
	WHEAT											
Chicago	505,974	479,929	462,888	483,480	133.7	128.0	124.1	126.3	26.4%	26.7%	26.8%	26.1%
Kansas City	286,378	293,675	288,210	285,181	54.7	55.0	55.9	54.0	19.1%	18.7%	19.4%	18.9%
Minneapolis	-	-	-	-	-	-	-	-	-	-	-	-
All Wheat	792,352	773,604	751,098	768,661	188.4	183.0	179.9	180.3	23.8%	23.7%	24.0%	23.5%
CORN	1,990,550	2,030,923	1,950,332	1,905,548	309.4	311.1	310.3	308.5	15.5%	15.3%	15.9%	16.2%
OATS	-	-	-	-	-	-	-	-	-	-	-	-
SOYBEANS	984,159	975,735	967,977	994,119	183.5	177.4	175.7	170.5	18.6%	18.2%	18.1%	17.2%
SOY OIL	476,630	470,078	460,732	481,302	98.1	93.0	89.5	87.1	20.6%	19.8%	19.4%	18.1%
SOY MEAL	491,275	476,417	466,434	473,404	80.2	79.5	70.1	66.8	16.3%	16.7%	15.0%	14.1%

SOURCE: CFTC & FI

# NET POSITION FUTURES AND OPTIONS OF SPECULATORS AND INDEX FUNDS IN COMBINED SRW, HRW, CORN, SOYBEANS, SOYMEAL AND SOYOIL



Source: CFTC and FI

○ Net Index

— Net Speculator

**DISAGGREGATED COMMITMENT OF TRADERS  
FUTURES ONLY NET POSITIONS  
AS OF 08/11/2020  
(IN THOUSAND CONTRACTS)**

	PRODUCER / MERCHANT / PROCESSOR / USER				(INDEX/ETF) SWAP DEALERS				(CTA/CPO/OTHER UNREGISTERED) MANAGED MONEY				
	11-Aug	4-Aug	28-Jul	21-Jul	11-Aug	4-Aug	28-Jul	21-Jul	11-Aug	4-Aug	28-Jul	21-Jul	
	WHEAT												
Chicago	(71.9)	(75.6)	(71.9)	(80.4)	89.7	82.8	74.4	82.1	(18.7)	(1.0)	0.8	2.6	
Kansas City	(24.3)	(33.5)	(36.4)	(33.0)	47.5	49.0	47.7	45.7	(35.2)	(26.5)	(20.5)	(19.7)	
Minneapolis	16.7	13.6	12.2	11.8	2.2	2.3	2.3	2.0	(24.5)	(22.0)	(21.1)	(20.7)	
All Wheat	(79.6)	(95.5)	(96.1)	(101.7)	139.4	134.2	124.4	129.8	(78.4)	(49.4)	(40.8)	(37.8)	
CORN	(26.4)	(27.6)	(66.5)	(68.9)	183.9	186.2	184.0	181.1	(192.8)	(194.1)	(158.3)	(155.7)	
OATS	(2.5)	(2.9)	(3.0)	(2.8)	0.1	0.1	0.1	0.1	0.9	1.3	1.3	1.1	
SOYBEANS	(209.1)	(223.1)	(237.1)	(241.2)	142.2	141.4	129.7	122.9	28.3	43.7	59.2	73.1	
SOY OIL	(157.9)	(156.5)	(138.1)	(141.4)	87.9	86.1	84.0	85.1	53.0	49.1	37.8	38.0	
SOY MEAL	(104.8)	(103.5)	(102.4)	(96.6)	79.5	79.6	71.8	70.4	(28.0)	(19.9)	(18.8)	(28.3)	
									Managed % of OI				
									Chicago W	-5%	0%	0%	1%
									Corn	-12%	-12%	-10%	-10%
	TOTAL				OTHER REPORTABLE				NON REPORTABLE				
WHEAT													
Chicago	389,649	380,509	372,308	373,461	22.3	14.4	15.8	16.2	(21.3)	(20.6)	(19.2)	(20.5)	
Kansas City	263,114	271,336	267,660	261,941	9.0	7.9	5.9	4.0	3.0	3.0	3.2	3.0	
Minneapolis	79,627	72,629	70,408	68,550	2.8	3.1	3.1	3.0	2.9	3.0	3.6	3.9	
All Wheat	732,390	724,474	710,376	703,952	34.0	25.3	24.9	23.2	(15.4)	(14.6)	(12.4)	(13.6)	
CORN	1,589,059	1,638,917	1,599,450	1,523,220	42.9	45.7	55.9	56.8	(7.6)	(10.1)	(15.0)	(13.4)	
OATS	4,495	4,593	4,548	4,271	1.0	1.0	1.0	0.9	0.5	0.5	0.6	0.7	
SOYBEANS	833,360	835,308	833,537	837,841	50.0	48.3	53.9	48.4	(11.4)	(10.3)	(5.6)	(3.2)	
SOY OIL	442,474	435,763	432,099	444,915	3.0	4.8	5.3	7.7	14.1	16.5	10.9	10.5	
SOY MEAL	447,208	436,579	429,852	433,462	35.3	30.5	33.7	34.9	18.0	13.2	15.7	19.6	

SOURCE: CFTC & FI

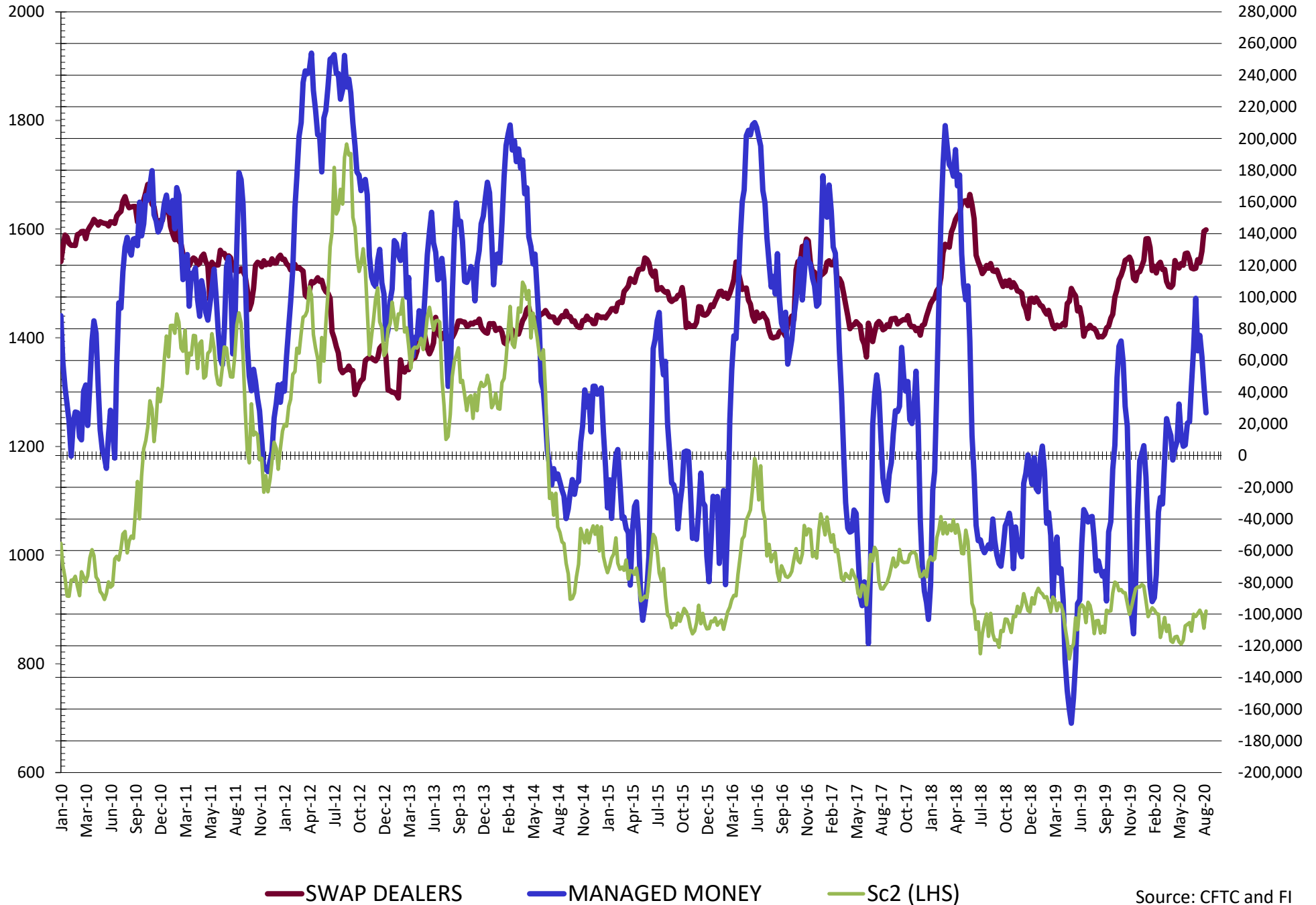
**DISAGGREGATED COMMITMENT OF TRADERS  
FUTURES & OPTIONS NET POSITIONS  
AS OF 08/11/2020  
(IN THOUSAND CONTRACTS)**

	PRODUCER / MERCHANT / PROCESSOR / USER				(INDEX/ETF) SWAP DEALERS				(CTA/CPO/OTHER UNREGISTERED) MANAGED MONEY			
	11-Aug	4-Aug	28-Jul	21-Jul	11-Aug	4-Aug	28-Jul	21-Jul	11-Aug	4-Aug	28-Jul	21-Jul
	WHEAT											
Chicago	(73.9)	(83.3)	(77.5)	(80.8)	96.4	89.1	80.5	87.9	(15.5)	1.2	1.7	0.5
Kansas City	(16.2)	(25.2)	(30.2)	(28.1)	47.9	49.4	48.1	45.8	(34.6)	(25.8)	(19.0)	(18.2)
Minneapolis	17.4	14.1	12.7	12.2	2.2	2.4	2.3	2.1	(24.5)	(22.0)	(21.1)	(20.7)
All Wheat	(72.7)	(94.4)	(95.0)	(96.7)	146.5	140.8	130.9	135.8	(74.6)	(46.6)	(38.5)	(38.3)
CORN	(58.5)	(62.3)	(98.3)	(95.3)	198.9	209.1	208.1	206.0	(172.4)	(172.8)	(143.3)	(137.8)
OATS	(2.4)	(2.7)	(2.9)	(2.7)	0.1	0.1	0.1	0.1	0.9	1.3	1.3	1.1
SOYBEANS	(168.4)	(188.0)	(205.9)	(211.1)	142.3	141.4	129.0	121.9	26.9	44.2	62.2	75.8
SOY OIL	(156.8)	(154.2)	(138.0)	(142.5)	87.7	85.8	83.8	85.1	52.1	48.3	37.5	36.9
SOY MEAL	(96.5)	(96.9)	(97.1)	(90.9)	85.9	85.8	77.1	76.8	(29.3)	(21.0)	(19.5)	(29.2)
	TOTAL				OTHER REPORTABLE				NON REPORTABLE			
	OPEN INTEREST				NON REPORTABLE				NON REPORTABLE			
	11-Aug	4-Aug	28-Jul	21-Jul	11-Aug	4-Aug	28-Jul	21-Jul	11-Aug	4-Aug	28-Jul	21-Jul
WHEAT												
Chicago	505,974	479,929	462,888	483,480	15.1	15.0	15.7	14.4	(22.2)	(21.9)	(20.4)	(22.0)
Kansas City	286,378	293,675	288,210	285,181	(0.9)	(2.0)	(2.7)	(3.1)	3.8	3.6	3.8	3.6
Minneapolis	81,313	74,156	71,924	69,996	1.9	2.4	2.5	2.3	3.0	3.1	3.6	4.1
All Wheat	873,665	847,760	823,022	838,657	16.2	15.4	15.5	13.6	(15.3)	(15.1)	(13.0)	(14.3)
CORN	1,990,550	2,030,923	1,950,332	1,905,548	74.2	72.3	78.7	70.1	(42.2)	(46.3)	(46.3)	(46.3)
OATS	4,834	4,910	4,858	4,585	0.9	0.9	0.9	0.8	0.5	0.5	0.6	0.7
SOYBEANS	984,159	975,735	967,977	994,119	16.5	16.6	21.8	17.1	(17.2)	(14.3)	(7.1)	(3.8)
SOY OIL	476,630	470,078	460,732	481,302	2.1	2.9	4.8	9.4	14.8	17.1	11.7	11.1
SOY MEAL	491,275	476,417	466,434	473,404	20.2	17.2	22.0	21.6	19.7	14.8	17.5	21.6

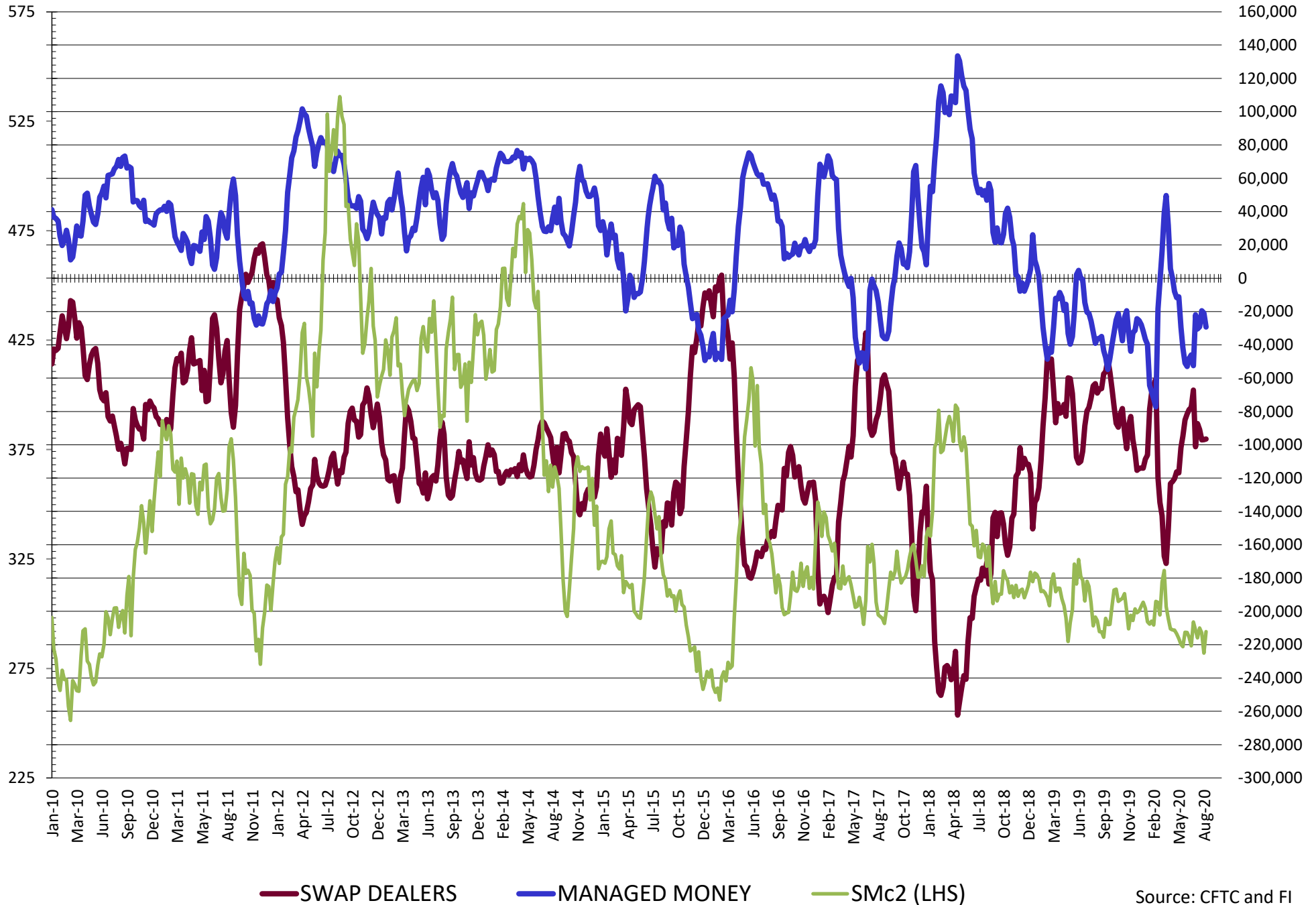
SOURCE: CFTC & FI



# NET POSITION FUTURES AND OPTIONS OF SWAP AND MANAGED FUNDS IN SOYBEANS

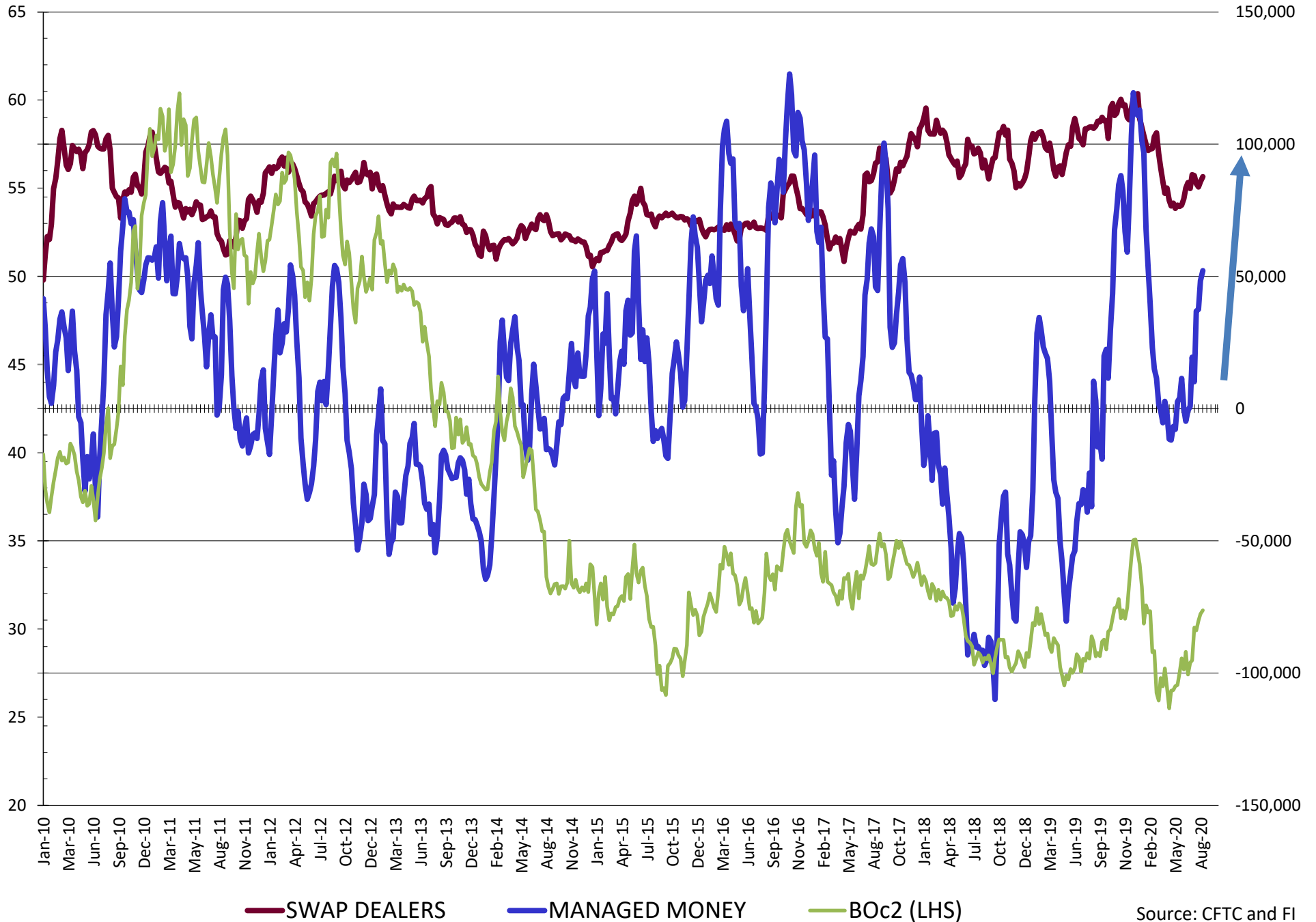


# NET POSITION FUTURES AND OPTIONS OF SWAP AND MANAGED FUNDS IN SOYBEAN MEAL

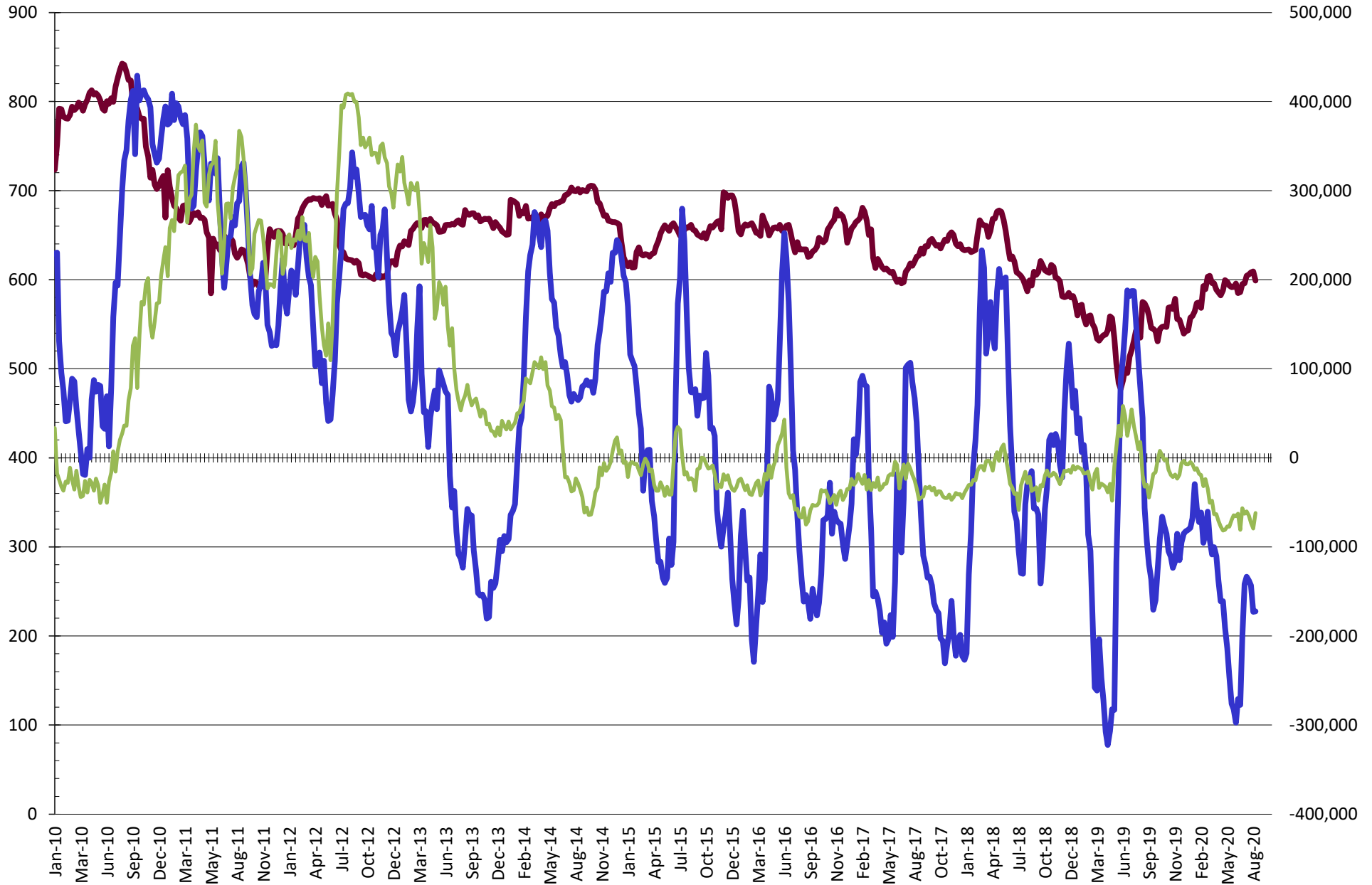


Source: CFTC and FI  
8/15/2020

# NET POSITION FUTURES AND OPTIONS OF SWAP AND MANAGED FUNDS IN SOYBEAN OIL

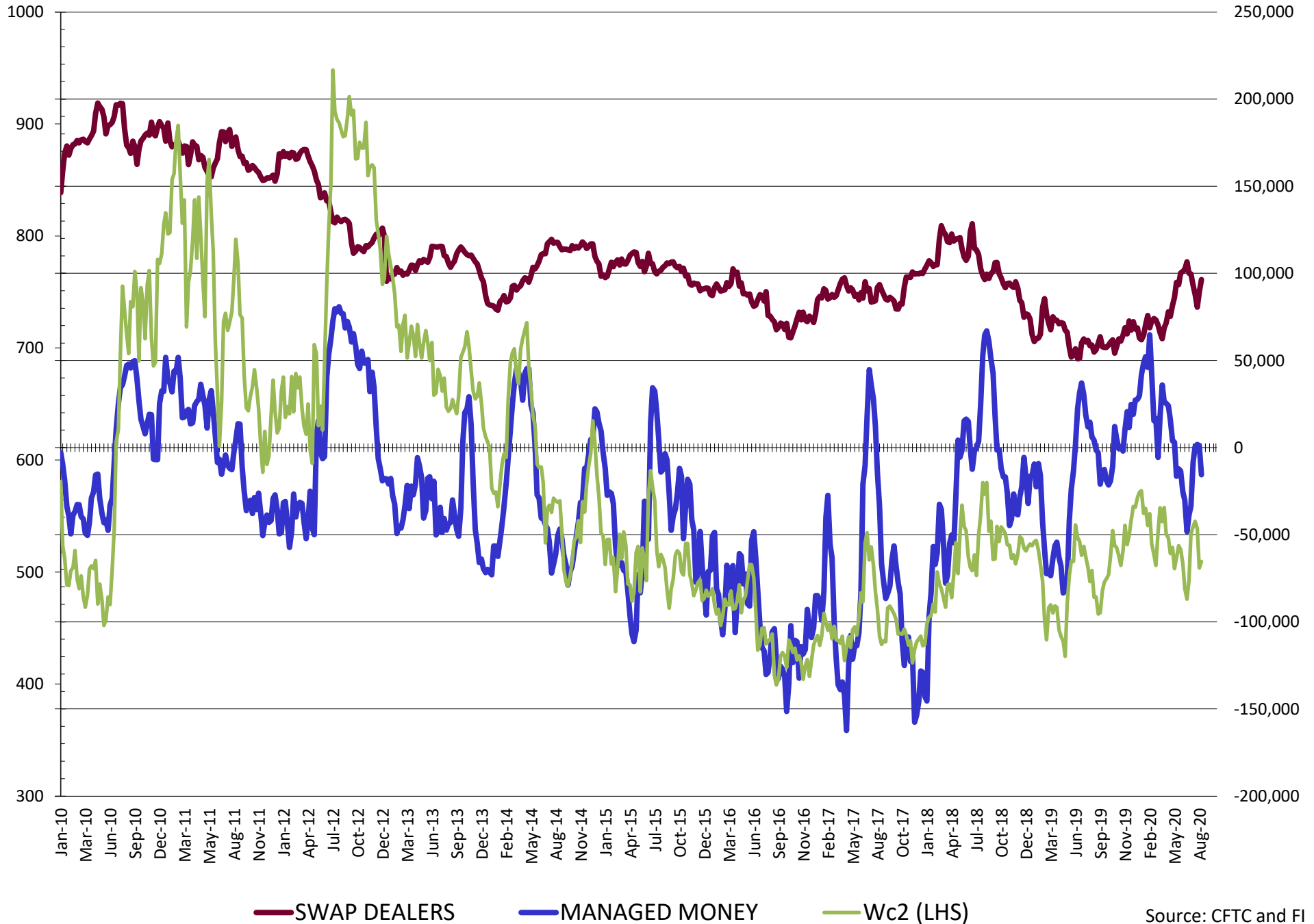


# NET POSITION FUTURES AND OPTIONS OF SWAP AND MANAGED FUNDS IN CORN

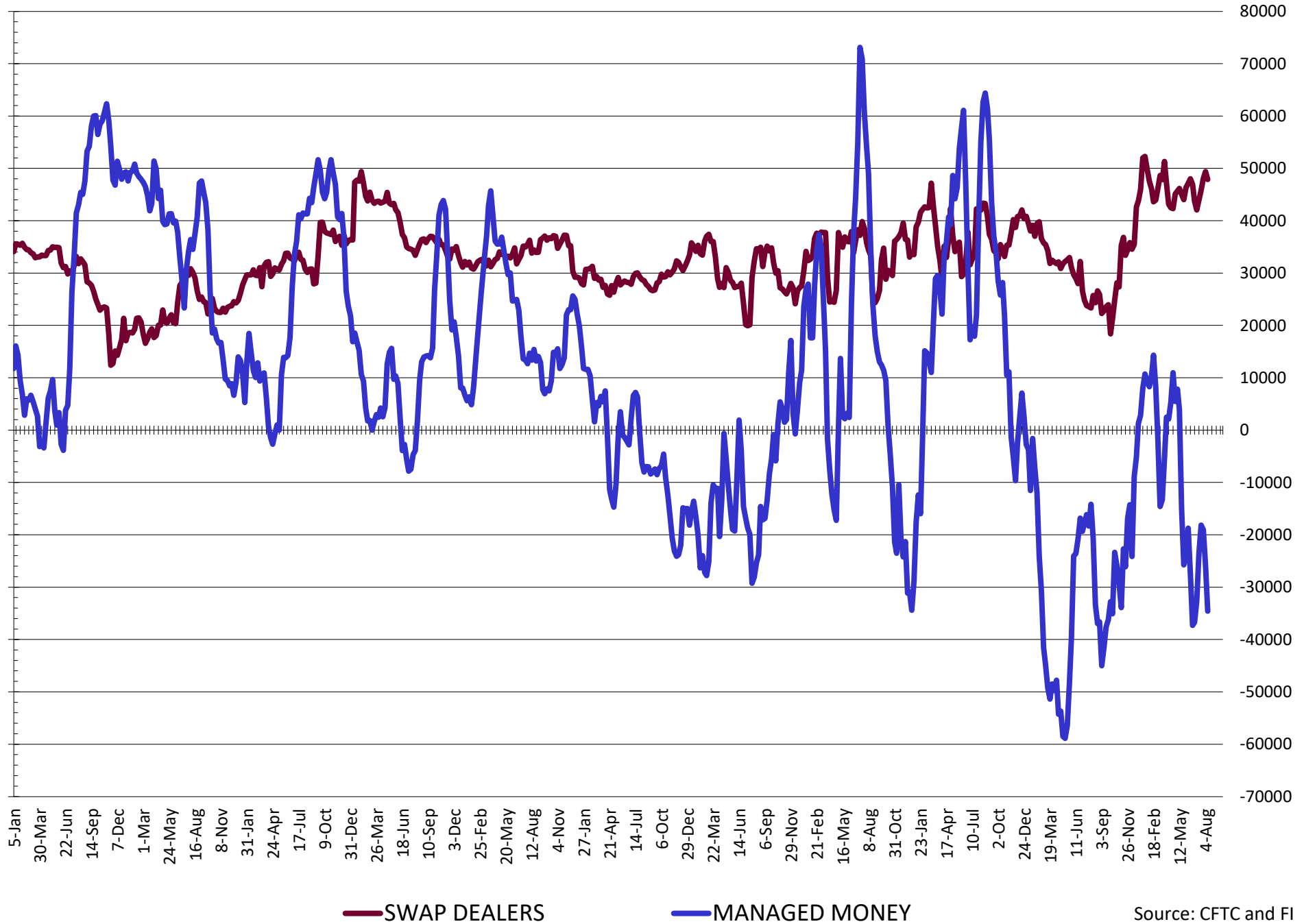


— SWAP DEALERS     
 — MANAGED MONEY     
 — Cc2 (LHS)

# NET POSITION FUTURES AND OPTIONS OF SWAP AND MANAGED FUNDS IN CHICAGO WHEAT

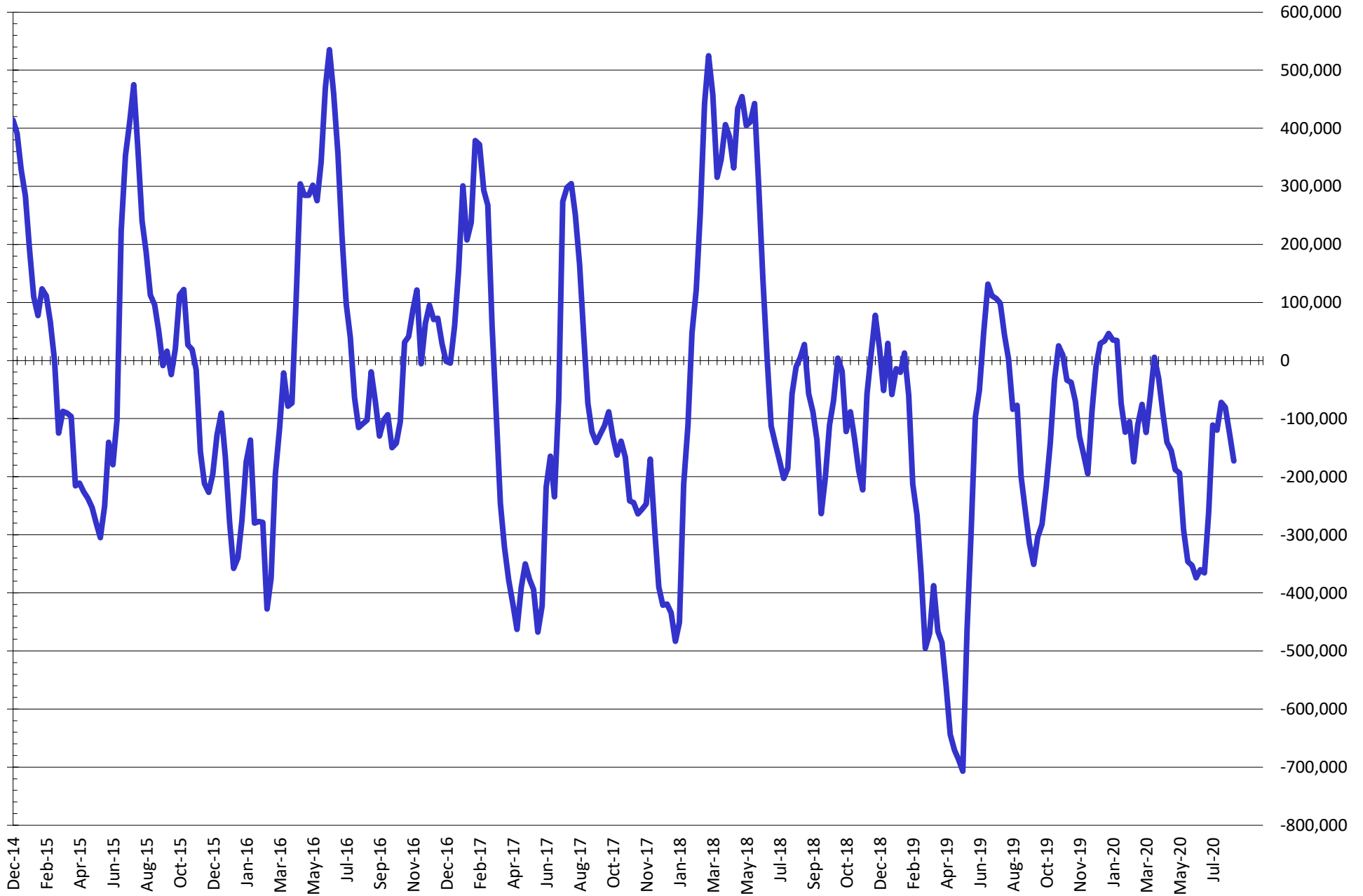


# NET POSITION FUTURES AND OPTIONS OF SWAP AND MANAGED FUNDS IN KANSAS WHEAT



Source: CFTC and FI  
8/15/2020

# NET POSITION FUTURES AND OPTIONS OF SWAP AND MANAGED FUNDS IN COMBINED SRW, HRW, CORN, SOYBEANS, SOYMEAL AND SOYOIL



— Net Managed Money

Source: CFTC and FI  
8/15/2020

## Traditional Daily Estimate of Funds 8/11/20

	(Neg)-"Short"	Pos-"Long"			
Actual less Est.	(8.5)	(9.7)	0.2	(1.4)	5.1
	<b>Corn</b>	<b>Bean</b>	<b>Chi. Wheat</b>	<b>Meal</b>	<b>Oil</b>
Act.	(149.9)	78.3	3.6	7.3	56.0
12-Aug	10.0	8.0	(4.0)	1.0	9.0
13-Aug	48.0	13.0	5.0	8.0	(4.0)
14-Aug	(1.0)	(3.0)	4.0	(1.0)	(1.0)
17-Aug					
18-Aug					
<b>FI Est. of Futures Only 8/11/20</b>	<b>(92.9)</b>	<b>96.3</b>	<b>8.6</b>	<b>15.3</b>	<b>60.0</b>
<b>FI Est. Futures &amp; Options</b>	<b>(41.2)</b>	<b>61.4</b>	<b>4.6</b>	<b>(1.1)</b>	<b>58.3</b>
Futures only record long	498.2 2/1/2011	260.4 6/27/2017	86.5 8/7/2018	167.5 5/1/2018	160.2 11/1/2016
Futures only record short	(235.0) 6/9/2020	(118.3) 4/30/2019	(130.0) 4/25/2017	(49.5) 3/1/2016	(69.8) 9/18/2018
Futures and options record net long	458.5 9/28/2010	259.8 5/1/2012	64.8 8/7/2012	132.1 5/1/2018	159.2 1/1/2016
Futures and options record net short	(270.6) 4/26/2019	(132.0) 4/30/2019	(143.3) 4/25/2017	(64.1) 3/1/2016	(77.8) 9/18/2018

## Managed Money Daily Estimate of Funds 8/11/20

	Corn	Bean	Chi. Wheat	Meal	Oil
Latest CFTC Fut. Only	(192.8)	28.3	(18.7)	(28.0)	53.0
Latest CFTC F&O	(172.4)	26.9	(15.5)	(29.3)	52.1
FI Est. Managed Fut. Only	(136)	46	(14)	(20)	57
FI Est. Managed Money F&O	(115)	45	(11)	(21)	56

## Index Funds Latest Positions (as of last Tuesday)

Index Futures & Options	309.4	183.5	133.7	NA	98.1
Change From Previous Week	(1.7)	6.1	5.7	NA	5.1

Source: Reuters, CFTC & FI (FI est. are noted with latest date)



# Disclaimer

TO CLIENTS/PROSPECTS OF FUTURES INTERNATIONAL, SEE RISK DISCLOSURE BELOW:

THIS COMMUNICATION IS CONVEYED AS A SOLICITATION FOR ENTERING INTO A DERIVATIVES TRANSACTION.

Any trading recommendations and market or other information to Customer by Futures International (FI), although based upon information obtained from sources believed by FI to be reliable may not be accurate and may be changed without notice to customer. FI makes no guarantee as to the accuracy or completeness of any of the information or recommendations furnished to Customer. Customer understands that FI, its managers, employees and/or affiliates may have a position in commodity futures, options or other derivatives which may not be consistent with the recommendations furnished by FI to Customer.

The risk of trading futures and options and other derivatives involves a substantial risk of loss and is not suitable for all persons. In purchasing an option, the risk is limited to the premium paid, and all commissions and fees involved with the trade. When an option is shorted or written, the writer of the option has unlimited risk with respect to the option written. The use of options strategies such as a straddles and strangles involve multiple option positions and may substantially increase the amount of commissions and fees paid to execute the strategy. Option prices do not necessarily move in tandem with cash or futures prices. Each person must consider whether a particular trade, combination of trades or strategy is suitable for that person's financial means and objectives.

This material may include discussions of seasonal patterns, however, futures prices have already factored in the seasonal aspects of supply and demand, and seasonal patterns are no indication of future market trends. Finally, past performance is not indicative of future results.

This communication may contain links to third party websites which are not under the control of FI and FI is not responsible for their content. Products and services are offered only in jurisdictions where solicitation and sale are lawful, and in accordance with applicable laws and regulations in each such jurisdiction.