

# CFTC COMMITMENT OF TRADERS REPORT

As of 8/4/2020

## TRADITIONAL FUNDS net position changes

Wed to Tue, in 000 contracts

	Corn	Bean	Meal	Oil	Chi. Wheat	KC Wheat	Min Wheat
Futures Only	(46.0)	(21.1)	(4.2)	10.8	(3.3)	(4.0)	(0.9)
Futures & Options Combined	(36.0)	(23.2)	(6.3)	8.8	(1.3)	(6.1)	(1.0)

## TRADITIONAL COMMERCIAL net position changes

	Corn	Bean	Meal	Oil	Chi. Wheat	KC Wheat	Min Wheat
Futures Only	41.2	25.7	6.7	(16.4)	4.7	4.2	1.4
Futures & Options Combined	37.0	30.4	8.9	(14.2)	2.7	6.3	1.4

## MANAGED MONEY net position changes

	Corn	Bean	Meal	Oil	Chi. Wheat	KC Wheat	Min Wheat
Futures Only	(35.8)	(15.5)	(1.0)	11.3	(1.8)	(6.0)	(0.9)
Futures & Options Combined	(29.5)	(17.9)	(1.5)	10.8	(0.5)	(6.8)	(0.9)

## SWAP DEALERS net position changes

	Corn	Bean	Meal	Oil	Chi. Wheat	KC Wheat	Min Wheat
Futures Only	2.2	11.7	7.8	2.0	8.4	1.3	0.1
Futures & Options Combined	1.0	12.4	8.7	2.0	8.5	1.3	0.1

## PRODUCERS/END USERS net position changes

	Corn	Bean	Meal	Oil	Chi. Wheat	KC Wheat	Min Wheat
Futures Only	39.0	14.0	(1.0)	(18.4)	(3.7)	2.9	1.4
Futures & Options Combined	36.0	18.0	0.2	(16.2)	(5.8)	5.0	1.4

## INDEX net position changes

	Corn	Bean	Meal	Oil	Chi. Wheat	KC Wheat	Min Wheat
Futures & Options Combined	0.8	1.7	9.4	3.5	4.0	(0.9)	NA

## SUPPLEMENTAL NON-COMMERCIAL net position changes

	Corn	Bean	Meal	Oil	Chi. Wheat	KC Wheat	Min Wheat
Futures & Options Combined	(39.3)	(13.6)	(9.1)	8.4	4.0	(5.6)	NA

## OPEN INTEREST net position changes

Wed to Tue, in 000 contracts

	Corn	Bean	Meal	Oil	Chi. Wheat	KC Wheat	Min Wheat
Futures Only	39.5	1.8	6.7	3.7	8.2	3.7	2.2
Futures & Options Combined	80.6	7.8	10.0	9.3	17.0	5.5	2.2

Source: CFTC and FI

Wed to Tue, in 000 contracts

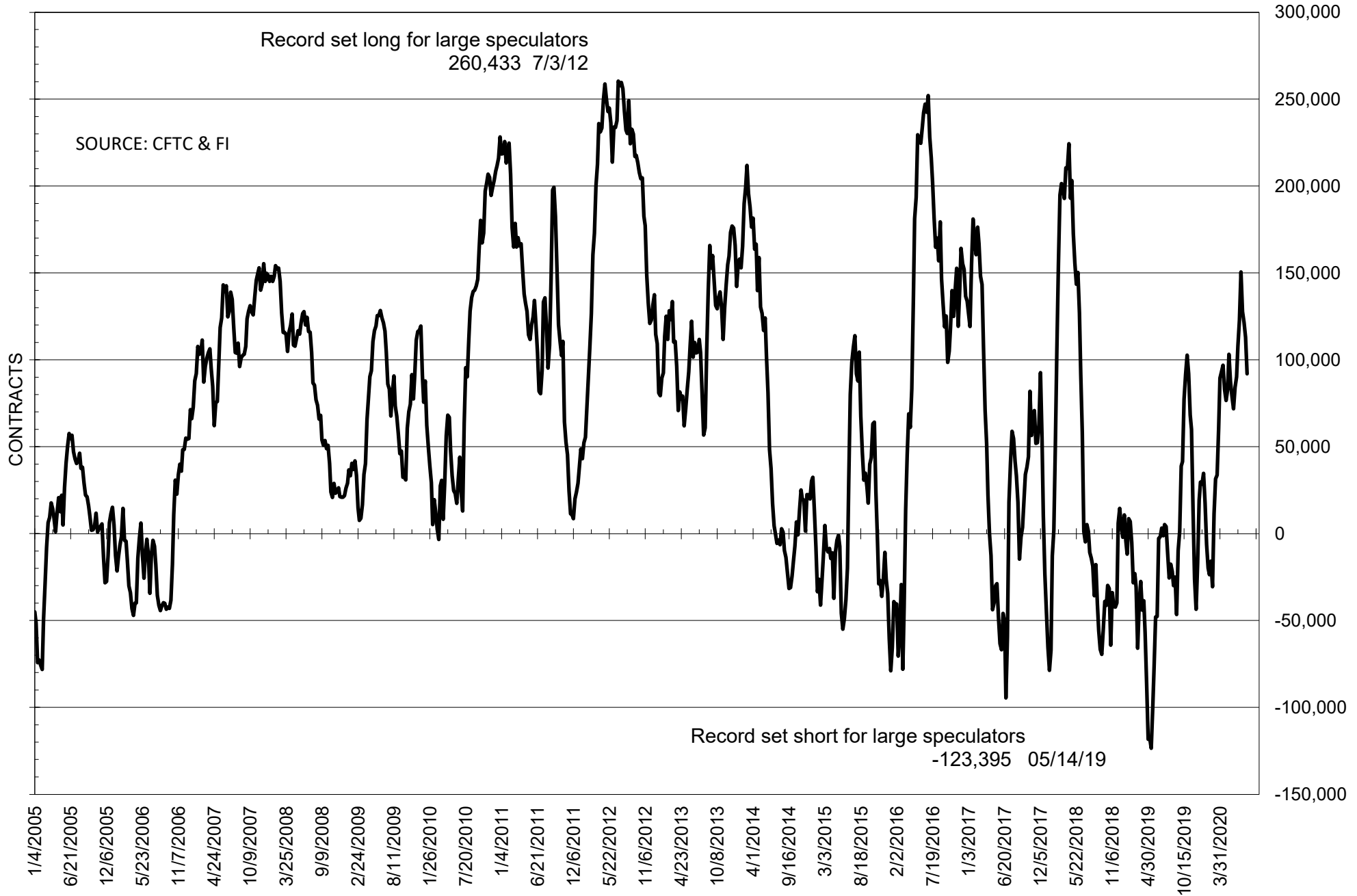
**COMMITMENT OF TRADERS  
FUTURES ONLY NET POSITIONS  
AS OF 08/04/2020  
(IN THOUSAND CONTRACTS)**

	COMMERCIAL				(FUND) NON COMMERCIAL				(SPEC) NON-REPORTABLE			
	4-Aug	28-Jul	21-Jul	14-Jul	4-Aug	28-Jul	21-Jul	14-Jul	4-Aug	28-Jul	21-Jul	14-Jul
	<b>WHEAT</b>											
Chicago	7.2	2.5	1.7	0.6	13.4	16.7	18.8	16.7	-20.6	-19.2	-20.5	-17.4
Kansas City	15.5	11.3	12.7	19.4	-18.6	-14.5	-15.7	-21.8	3.0	3.2	3.0	2.4
Minneapolis	15.9	14.5	13.8	12.9	-18.9	-18.0	-17.7	-15.4	3.0	3.6	3.9	2.5
All Wheat	38.7	28.3	28.1	32.9	-24.1	-15.9	-14.6	-20.5	-14.6	-12.4	-13.6	-12.4
<b>CORN</b>	158.6	117.4	112.2	113.6	-148.4	-102.4	-98.9	-99.7	-10.1	-15.0	-13.4	-13.9
<b>OATS</b>	-2.8	-2.9	-2.7	-2.6	2.3	2.2	2.0	2.2	0.5	0.6	0.7	0.4
<b>SOYBEANS</b>	-81.7	-107.4	-118.3	-127.3	92.0	113.0	121.5	127.7	-10.3	-5.6	-3.2	-0.4
<b>SOY OIL</b>	-70.4	-54.1	-56.2	-22.6	53.9	43.2	45.8	16.3	16.5	10.9	10.5	6.4
<b>SOY MEAL</b>	-23.8	-30.6	-26.2	-24.8	10.7	14.9	6.6	6.0	13.2	15.7	19.6	18.9

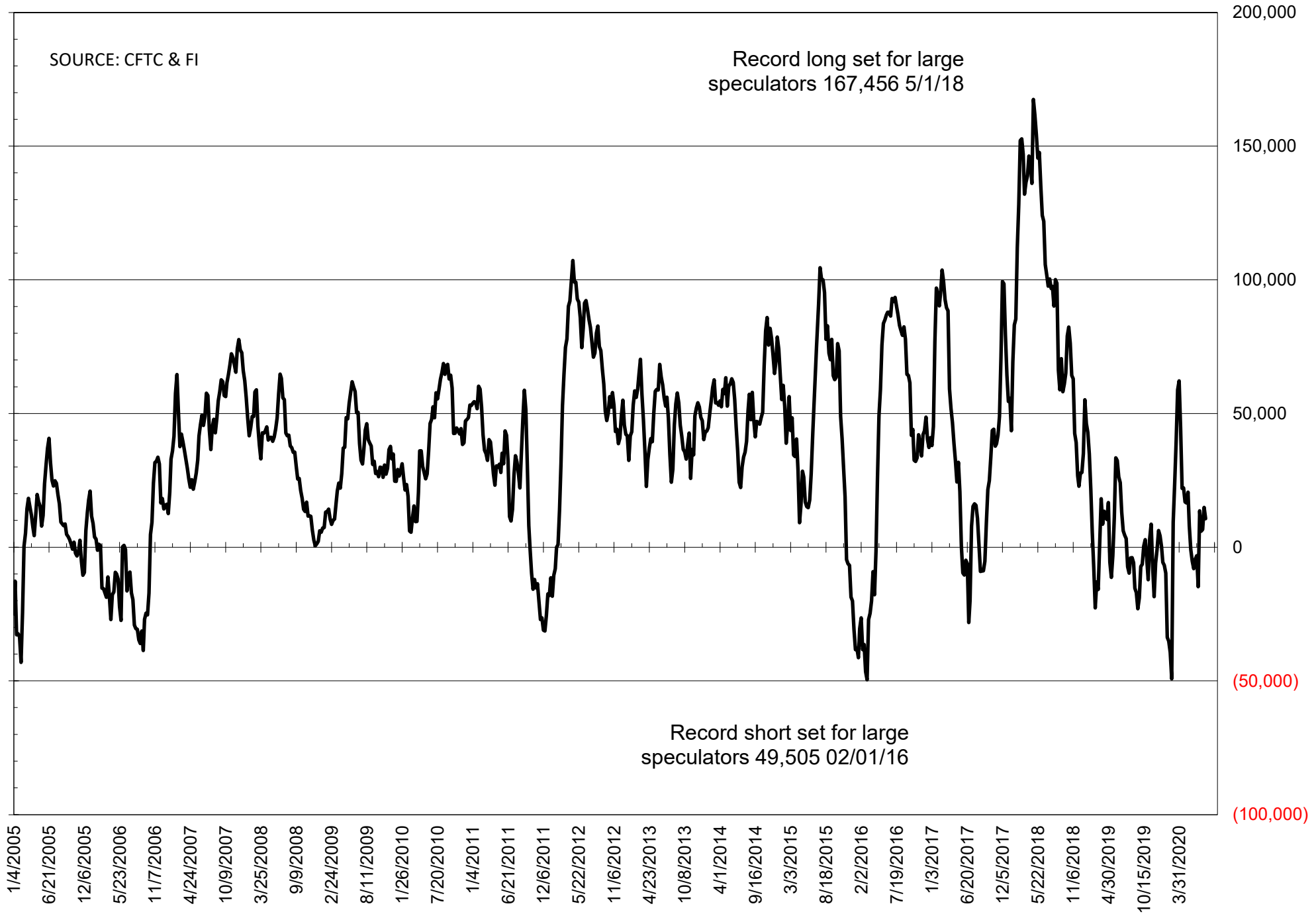
	TOTAL OPEN INTEREST				NEARBY FUTURES PRICE					4-Aug-20 LAST REPORTED % HELD BY TRADERS			
	4-Aug	28-Jul	21-Jul	14-Jul	U Latest	U 4-Aug	Q/U 28-Jul	Q/U 21-Jul	Q/U 14-Jul	LARGE FUND		SMALL	
										LONG	SHORT	LONG	SHORT
<b>WHEAT</b>													
Chicago	380509	372308	373461	389500	496.00	508.50	523.50	527.75	495.75	0%	29%	0%	12%
Kansas City	271336	267660	261941	248761	415.75	422.25	436.75	442.25	441.50	0%	32%	0%	7%
Minneapolis	72629	70408	68550	62788	494.50	501.75	506.25	510.50	513.00	0%	44%	0%	15%
<b>CORN</b>	1638917	1599450	1523220	1497743	307.75	308.50	320.25	322.75	343.25	0%	27%	0%	11%
<b>OATS</b>	4593	4548	4271	4324	274.25	272.25	286.00	279.00	281.50	0%	0%	0%	19%
<b>SOYBEANS</b>	835308	833537	837841	818767	867.50	879.75	897.00	896.50	896.00	22%	11%	6%	7%
<b>SOY OIL</b>	435763	432099	444915	438301	30.89	31.05	29.40	30.04	28.86	0%	10%	0%	6%
<b>SOY MEAL</b>	436579	429852	433462	420582	282.30	285.50	288.90	286.00	295.10	0%	16%	0%	6%

SOURCE: CFTC & FI

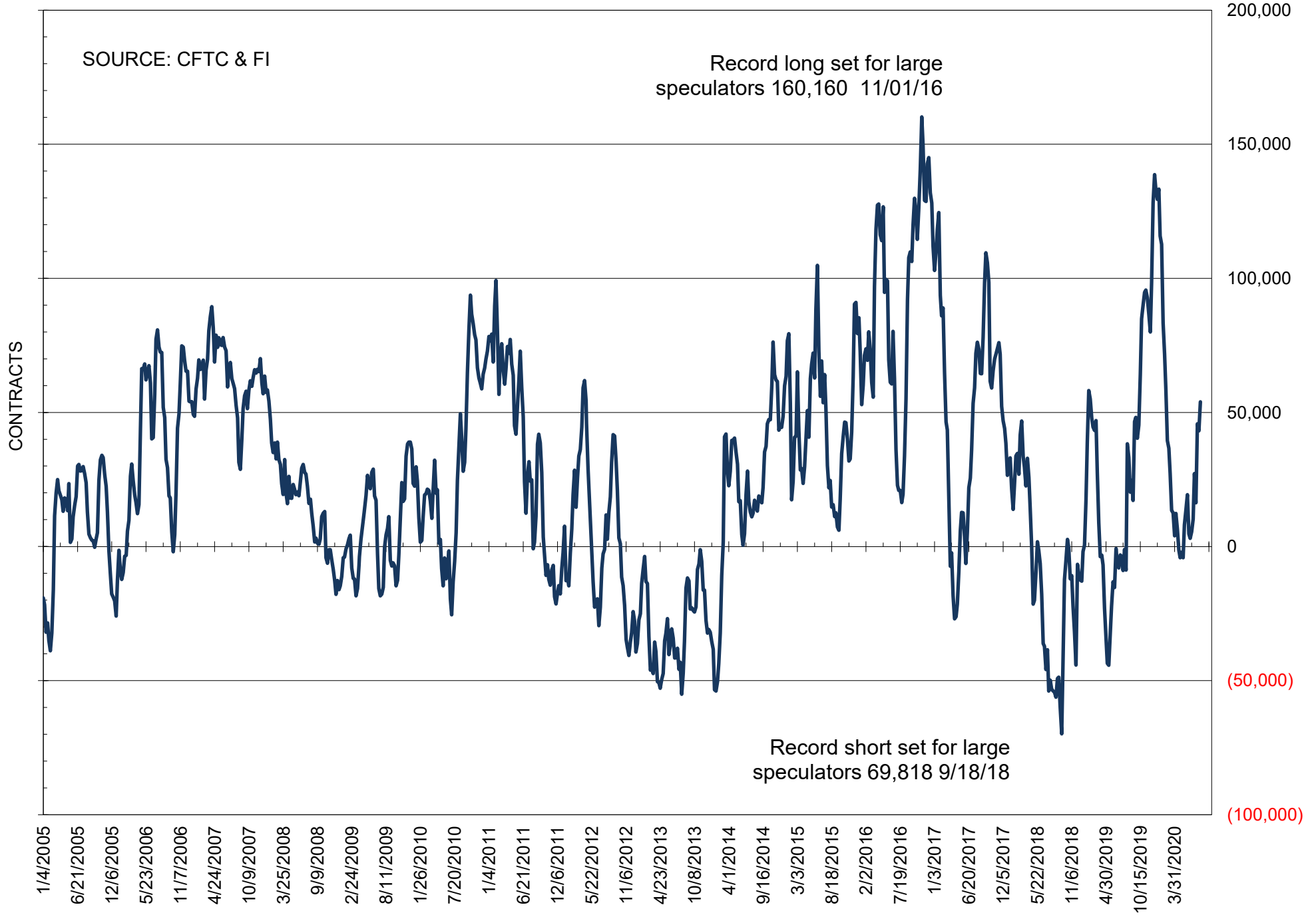
# NET POSITION OF FUTURES ONLY LARGE SPECS IN SOYBEANS



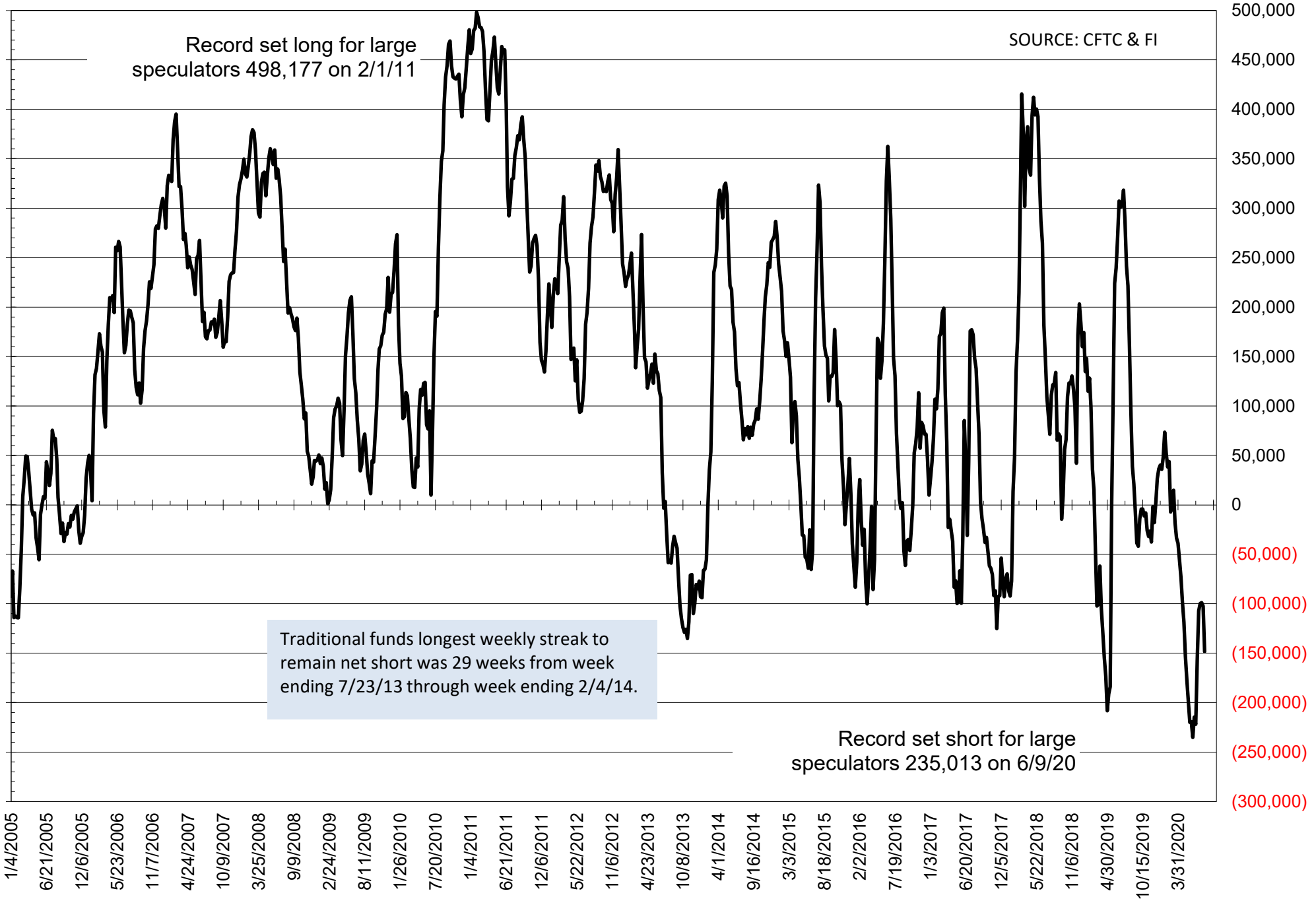
# NET POSITION OF FUTURES ONLY LARGE SPECS IN SOYMEAL



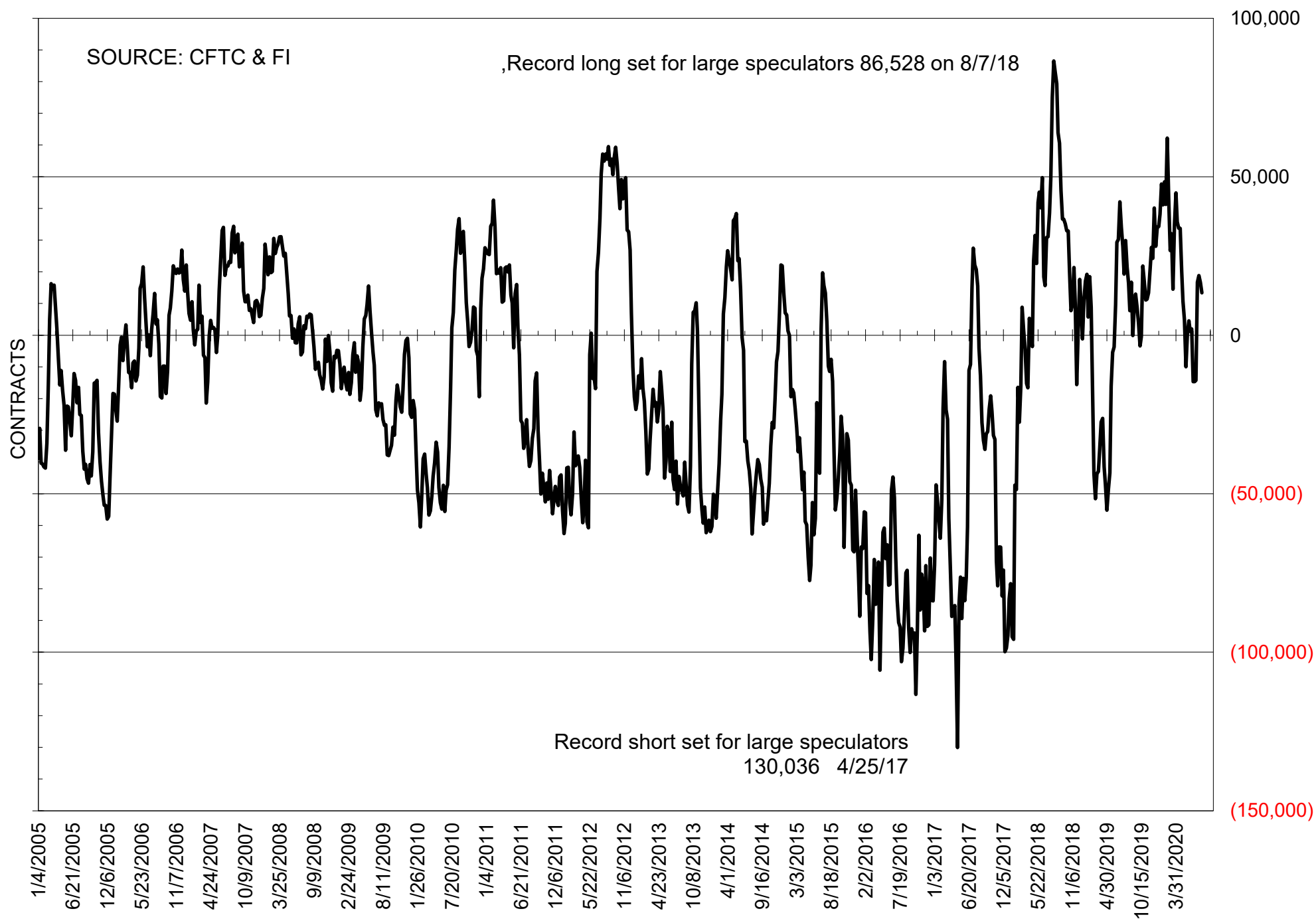
# NET POSITION OF FUTURES ONLY LARGE SPECS IN SOYOIL



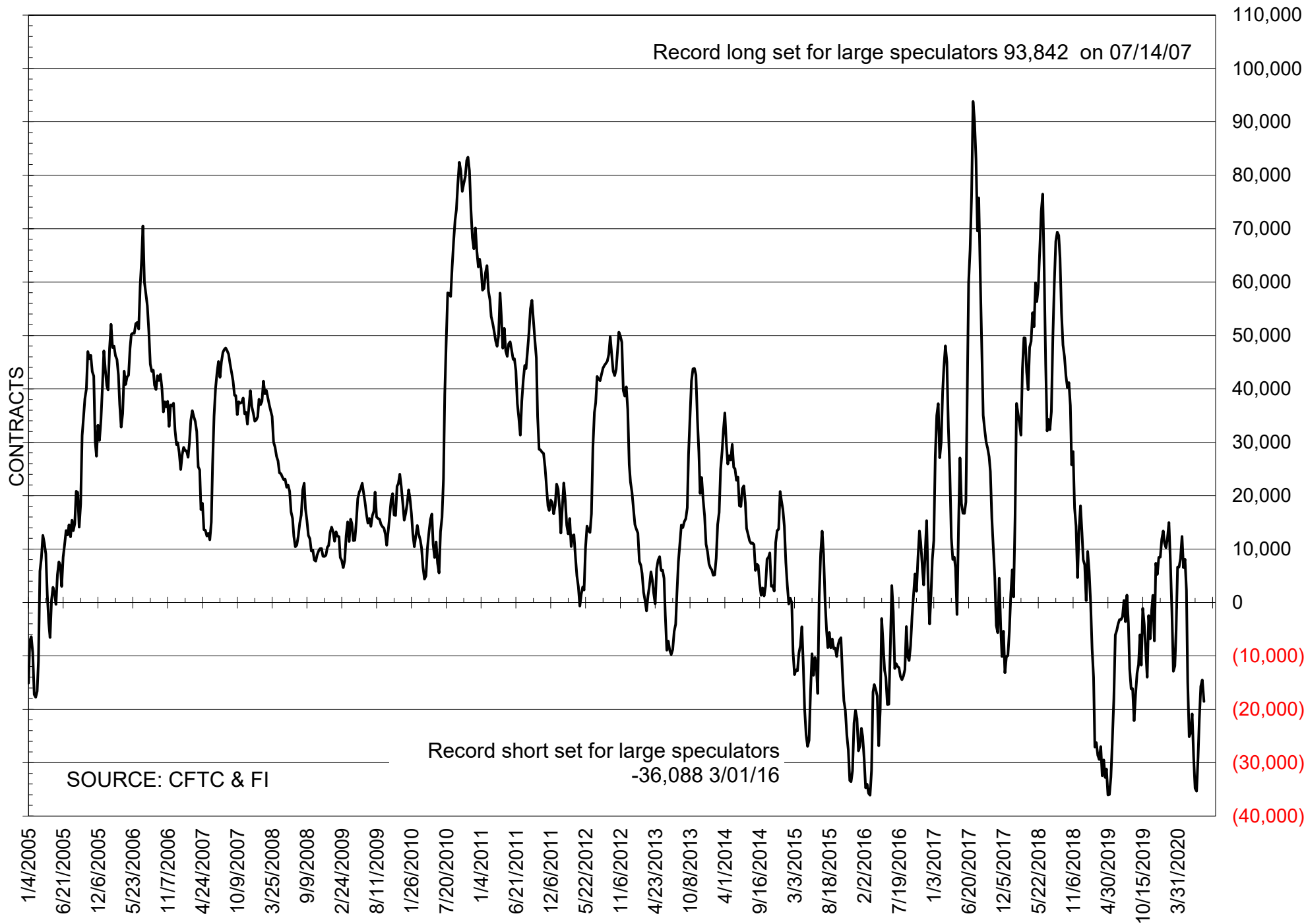
# NET POSITION OF LARGE SPECULATORS IN CORN



# NET POSITION OF FUTURES ONLY LARGE SPECS IN CHICAGO WHEAT

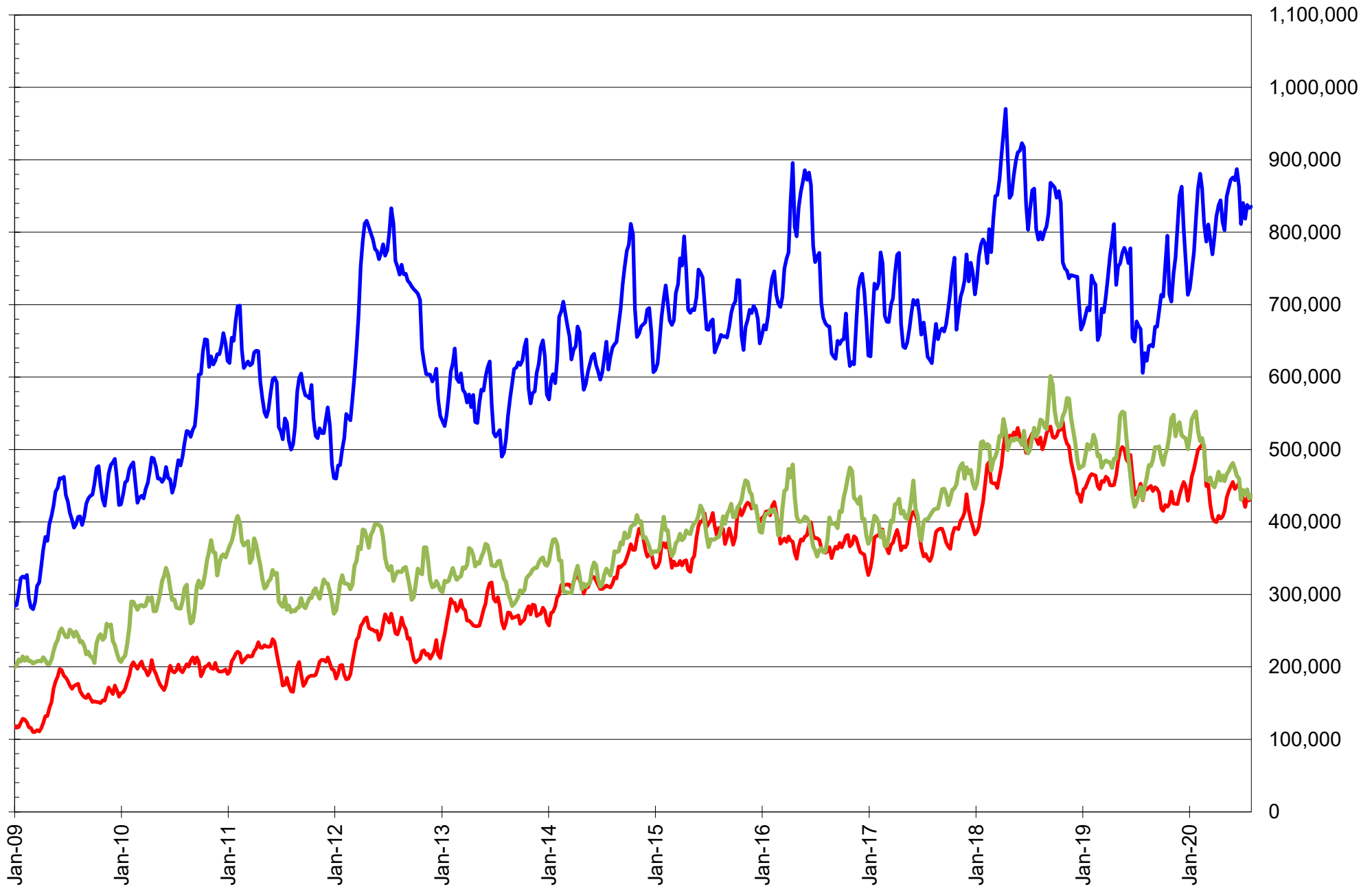


# NET POSITION OF LARGE SPECULATORS IN KANSAS CITY WHEAT





# TOTAL OPEN INTEREST IN SOYBEANS, MEAL AND OIL, FUTURES ONLY



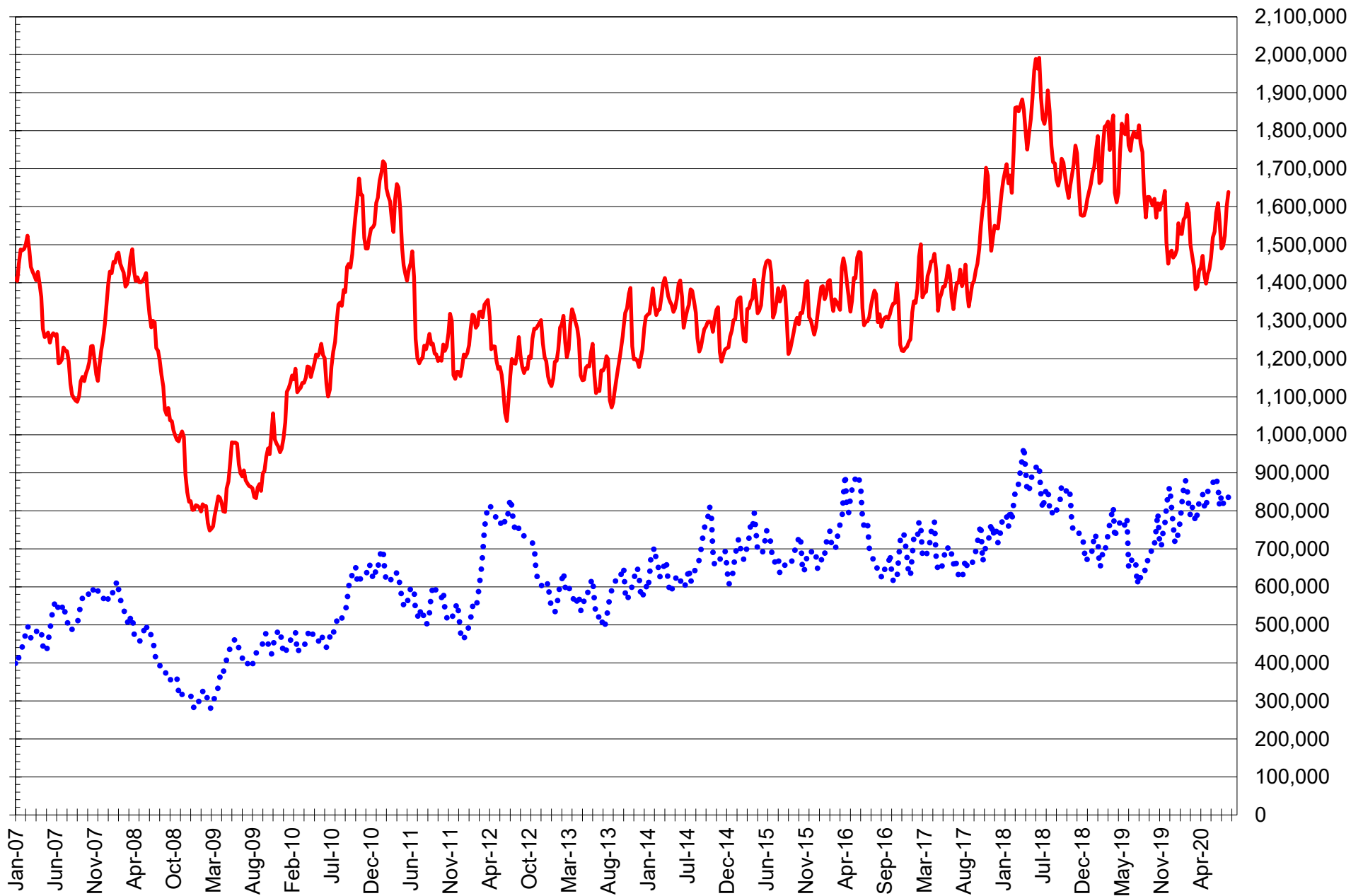
SOURCE: CFTC & FI

— SOYBEANS

— SOYBEAN MEAL

— SOYBEAN OIL

# TOTAL OPEN INTEREST IN CORN AND SOYBEANS, FUTURES ONLY



SOURCE: CFTC & FI

— CORN

•••• SOYBEANS

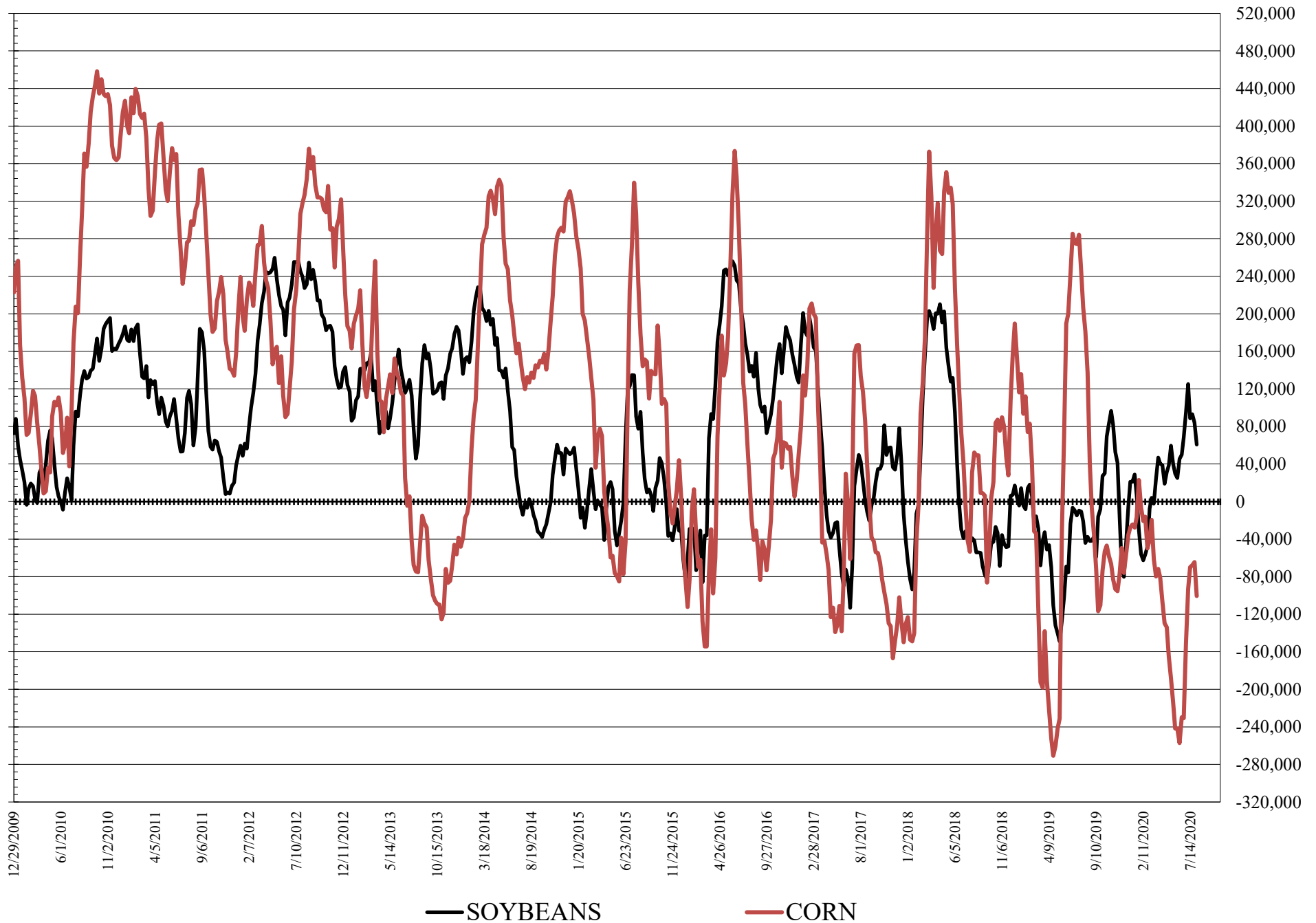
**COMMITMENT OF TRADERS  
FUTURES & OPTIONS NET POSITIONS  
AS OF 08/04/2020  
(IN THOUSAND CONTRACTS)**

	COMMERCIAL				(FUND) NON COMMERCIAL				(SPEC) NON-REPORTABLE			
	4-Aug	28-Jul	21-Jul	14-Jul	4-Aug	28-Jul	21-Jul	14-Jul	4-Aug	28-Jul	21-Jul	14-Jul
<b>WHEAT</b>												
Chicago	5.7	3.0	7.1	7.4	16.1	17.4	14.9	11.1	-21.9	-20.4	-22.0	-18.5
Kansas City	24.2	17.9	17.7	23.0	-27.8	-21.7	-21.3	-25.9	3.6	3.8	3.6	2.9
Minneapolis	16.5	15.0	14.3	13.4	-19.6	-18.7	-18.4	-16.0	3.1	3.6	4.1	2.6
All Wheat	46.4	36.0	39.1	43.7	-31.3	-22.9	-24.8	-30.8	-15.1	-13.0	-14.3	-12.9
<b>CORN</b>	146.8	109.8	110.7	108.6	-100.6	-64.5	-67.7	-69.9	-46.3	-45.3	-43.0	-38.7
OATS	-2.6	-2.8	-2.6	-2.5	2.2	2.1	1.9	2.1	0.5	0.6	0.7	0.4
<b>SOYBEANS</b>	-46.5	-76.9	-89.2	-88.4	60.8	84.0	93.0	88.6	-14.3	-7.1	-3.8	-0.2
SOY OIL	-68.3	-54.1	-57.5	-22.7	51.2	42.4	46.3	15.6	17.1	11.7	11.1	7.1
SOY MEAL	-11.1	-20.0	-14.1	-14.1	-3.7	2.5	-7.5	-6.7	14.8	17.5	21.6	20.9

	TOTAL OPEN INTEREST				COMMERCIALS		% HELD BY TRADERS LARGE (FUNDS)		SMALL (NON-REP)	
	4-Aug	28-Jul	21-Jul	14-Jul	LONG	SHORT	LONG	SHORT	LONG	SHORT
<b>WHEAT</b>										
Chicago	479,929	462,888	483,480	490,448	36%	34%	26%	22%	6%	10%
Kansas City	293,675	288,210	285,181	269,513	46%	38%	20%	29%	8%	7%
Minneapolis	74,156	71,924	69,996	64,311	60%	38%	16%	43%	19%	15%
<b>CORN</b>	2,030,923	1,950,332	1,905,548	1,876,486	46%	39%	15%	20%	10%	13%
OATS	4,910	4,858	4,585	4,645						
<b>SOYBEANS</b>	975,735	967,977	994,119	975,293	51%	55%	15%	9%	6%	7%
SOY OIL	470,078	460,732	481,302	467,484	51%	66%	20%	10%	9%	5%
SOY MEAL	476,417	466,434	473,404	463,141	57%	59%	14%	15%	9%	6%

SOURCE: CFTC & FI

# NET POSITION FUTURES AND OPTIONS OF LARGE SPECULATORS IN SOYBEANS AND CORN



**DISAGGREGATED COMMITMENT OF TRADERS  
FUTURES ONLY NET POSITIONS  
AS OF 08/04/2020  
(IN THOUSAND CONTRACTS)**

	PRODUCER / MERCHANT / PROCESSOR / USER				(INDEX/ETF) SWAP DEALERS				(CTA/CPO/OTHER UNREGISTERED) MANAGED MONEY				
	4-Aug	28-Jul	21-Jul	14-Jul	4-Aug	28-Jul	21-Jul	14-Jul	4-Aug	28-Jul	21-Jul	14-Jul	
	WHEAT												
Chicago	(75.6)	(71.9)	(80.4)	(86.4)	82.8	74.4	82.1	87.0	(1.0)	0.8	2.6	(6.5)	
Kansas City	(33.5)	(36.4)	(33.0)	(24.4)	49.0	47.7	45.7	43.8	(26.5)	(20.5)	(19.7)	(25.3)	
Minneapolis	13.6	12.2	11.8	10.7	2.3	2.3	2.0	2.2	(22.0)	(21.1)	(20.7)	(18.5)	
All Wheat	(95.5)	(96.1)	(101.7)	(100.1)	134.2	124.4	129.8	133.0	(49.4)	(40.8)	(37.8)	(50.3)	
CORN	(27.6)	(66.5)	(68.9)	(67.6)	186.2	184.0	181.1	181.2	(194.1)	(158.3)	(155.7)	(148.8)	
OATS	(2.9)	(3.0)	(2.8)	(2.7)	0.1	0.1	0.1	0.1	1.3	1.3	1.1	1.3	
SOYBEANS	(223.1)	(237.1)	(241.2)	(248.7)	141.4	129.7	122.9	121.4	43.7	59.2	73.1	63.7	
SOY OIL	(156.5)	(138.1)	(141.4)	(110.8)	86.1	84.0	85.1	88.2	49.1	37.8	38.0	10.4	
SOY MEAL	(103.5)	(102.4)	(96.6)	(91.4)	79.6	71.8	70.4	66.6	(19.9)	(18.8)	(28.3)	(29.7)	
									Managed % of OI				
									Chicago W	0%	0%	1%	-2%
									Corn	-12%	-10%	-10%	-10%
	TOTAL OPEN INTEREST				OTHER REPORTABLE				NON REPORTABLE				
	4-Aug	28-Jul	21-Jul	14-Jul	4-Aug	28-Jul	21-Jul	14-Jul	4-Aug	28-Jul	21-Jul	14-Jul	
WHEAT													
Chicago	380,509	372,308	373,461	389,500	14.4	15.8	16.2	23.2	(20.6)	(19.2)	(20.5)	(17.4)	
Kansas City	271,336	267,660	261,941	248,761	7.9	5.9	4.0	3.5	3.0	3.2	3.0	2.4	
Minneapolis	72,629	70,408	68,550	62,788	3.1	3.1	3.0	3.1	3.0	3.6	3.9	2.5	
All Wheat	724,474	710,376	703,952	701,049	25.3	24.9	23.2	29.8	(14.6)	(12.4)	(13.6)	(12.4)	
CORN	1,638,917	1,599,450	1,523,220	1,497,743	45.7	55.9	56.8	49.1	(10.1)	(15.0)	(13.4)	(13.9)	
OATS	4,593	4,548	4,271	4,324	1.0	1.0	0.9	0.9	0.5	0.6	0.7	0.4	
SOYBEANS	835,308	833,537	837,841	818,767	48.3	53.9	48.4	64.0	(10.3)	(5.6)	(3.2)	(0.4)	
SOY OIL	435,763	432,099	444,915	438,301	4.8	5.3	7.7	5.9	16.5	10.9	10.5	6.4	
SOY MEAL	436,579	429,852	433,462	420,582	30.5	33.7	34.9	35.7	13.2	15.7	19.6	18.9	

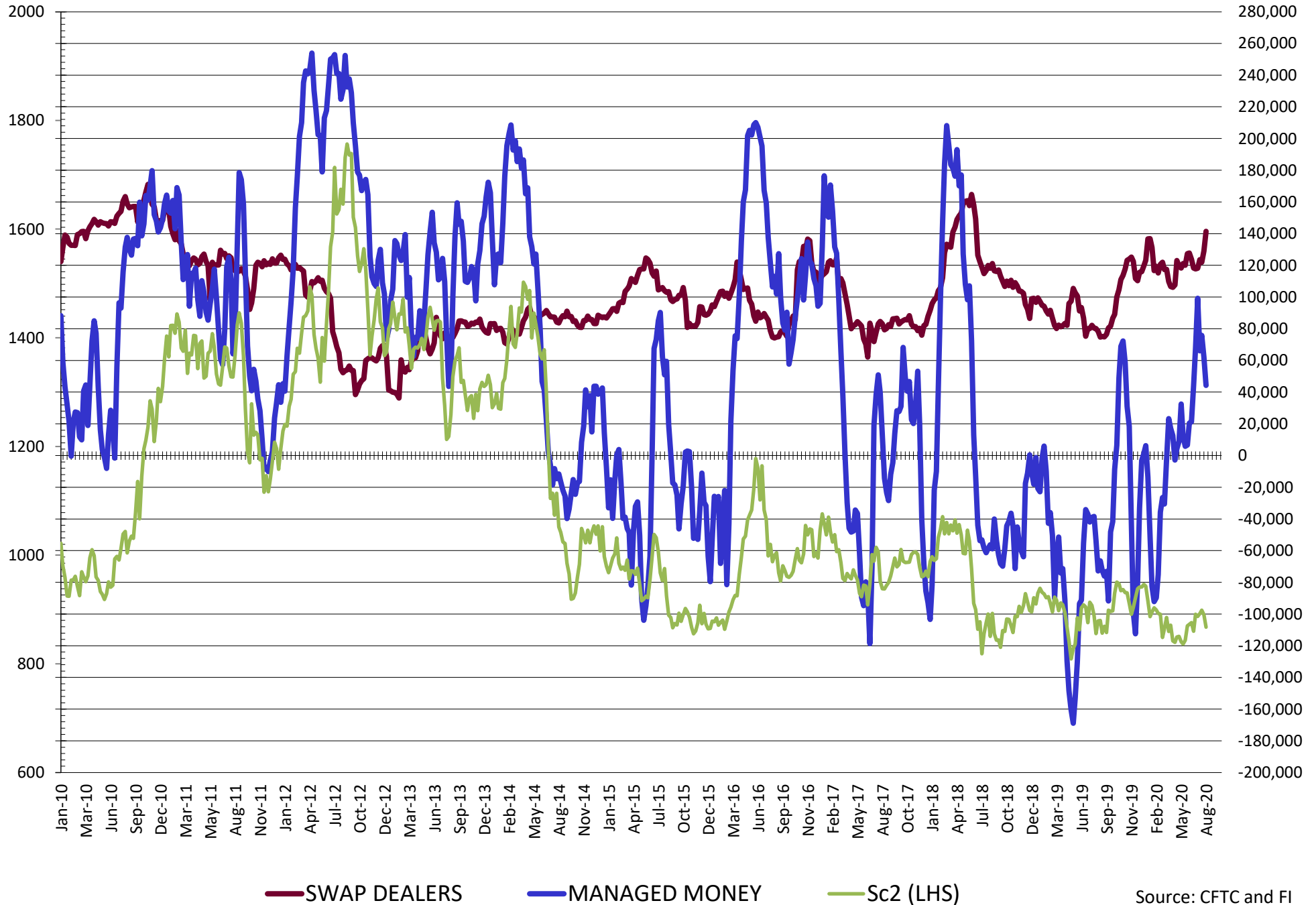
SOURCE: CFTC & FI

**DISAGGREGATED COMMITMENT OF TRADERS  
FUTURES & OPTIONS NET POSITIONS  
AS OF 08/04/2020  
(IN THOUSAND CONTRACTS)**

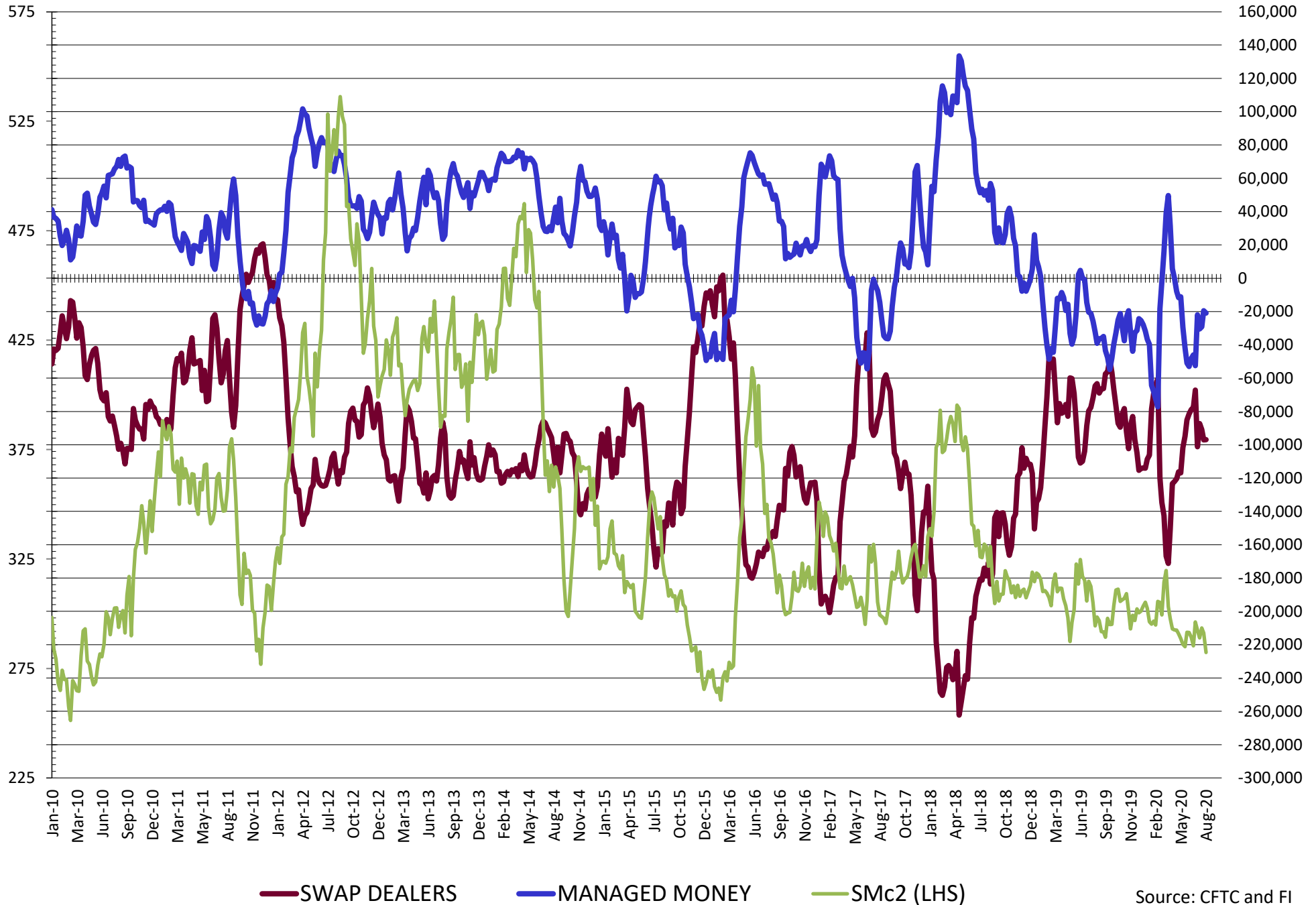
	PRODUCER / MERCHANT / PROCESSOR / USER				(INDEX/ETF) SWAP DEALERS				(CTA/CPO/OTHER UNREGISTERED) MANAGED MONEY			
	4-Aug	28-Jul	21-Jul	14-Jul	4-Aug	28-Jul	21-Jul	14-Jul	4-Aug	28-Jul	21-Jul	14-Jul
	WHEAT											
Chicago	(83.3)	(77.5)	(80.8)	(85.7)	89.1	80.5	87.9	93.1	1.2	1.7	0.5	(8.3)
Kansas City	(25.2)	(30.2)	(28.1)	(21.0)	49.4	48.1	45.8	43.9	(25.8)	(19.0)	(18.2)	(23.6)
Minneapolis	14.1	12.7	12.2	11.1	2.4	2.3	2.1	2.3	(22.0)	(21.1)	(20.7)	(18.5)
All Wheat	(94.4)	(95.0)	(96.7)	(95.6)	140.8	130.9	135.8	139.3	(46.6)	(38.5)	(38.3)	(50.4)
CORN	(62.3)	(98.3)	(95.3)	(95.7)	209.1	208.1	206.0	204.3	(172.8)	(143.3)	(137.8)	(133.6)
OATS	(2.7)	(2.9)	(2.7)	(2.6)	0.1	0.1	0.1	0.1	1.3	1.3	1.1	1.3
SOYBEANS	(188.0)	(205.9)	(211.1)	(211.9)	141.4	129.0	121.9	123.5	44.2	62.2	75.8	66.0
SOY OIL	(154.2)	(138.0)	(142.5)	(110.8)	85.8	83.8	85.1	88.1	48.3	37.5	36.9	10.2
SOY MEAL	(96.9)	(97.1)	(90.9)	(87.2)	85.8	77.1	76.8	73.1	(21.0)	(19.5)	(29.2)	(30.5)
	TOTAL				OTHER REPORTABLE				NON REPORTABLE			
	OPEN INTEREST				OTHER REPORTABLE				NON REPORTABLE			
	4-Aug	28-Jul	21-Jul	14-Jul	4-Aug	28-Jul	21-Jul	14-Jul	4-Aug	28-Jul	21-Jul	14-Jul
WHEAT												
Chicago	479,929	462,888	483,480	490,448	15.0	15.7	14.4	19.5	(21.9)	(20.4)	(22.0)	(18.5)
Kansas City	293,675	288,210	285,181	269,513	(2.0)	(2.7)	(3.1)	(2.3)	3.6	3.8	3.6	2.9
Minneapolis	74,156	71,924	69,996	64,311	2.4	2.5	2.3	2.5	3.1	3.6	4.1	2.6
All Wheat	847,760	823,022	838,657	824,272	15.4	15.5	13.6	19.7	(15.1)	(13.0)	(14.3)	(12.9)
CORN	2,030,923	1,950,332	1,905,548	1,876,486	72.3	78.7	70.1	63.7	(46.3)	(45.3)	(45.3)	(45.3)
OATS	4,910	4,858	4,585	4,645	0.9	0.9	0.8	0.8	0.5	0.6	0.7	0.4
SOYBEANS	975,735	967,977	994,119	975,293	16.6	21.8	17.1	22.6	(14.3)	(7.1)	(3.8)	(0.2)
SOY OIL	470,078	460,732	481,302	467,484	2.9	4.8	9.4	5.4	17.1	11.7	11.1	7.1
SOY MEAL	476,417	466,434	473,404	463,141	17.2	22.0	21.6	23.7	14.8	17.5	21.6	20.9

SOURCE: CFTC & FI

# NET POSITION FUTURES AND OPTIONS OF SWAP AND MANAGED FUNDS IN SOYBEANS

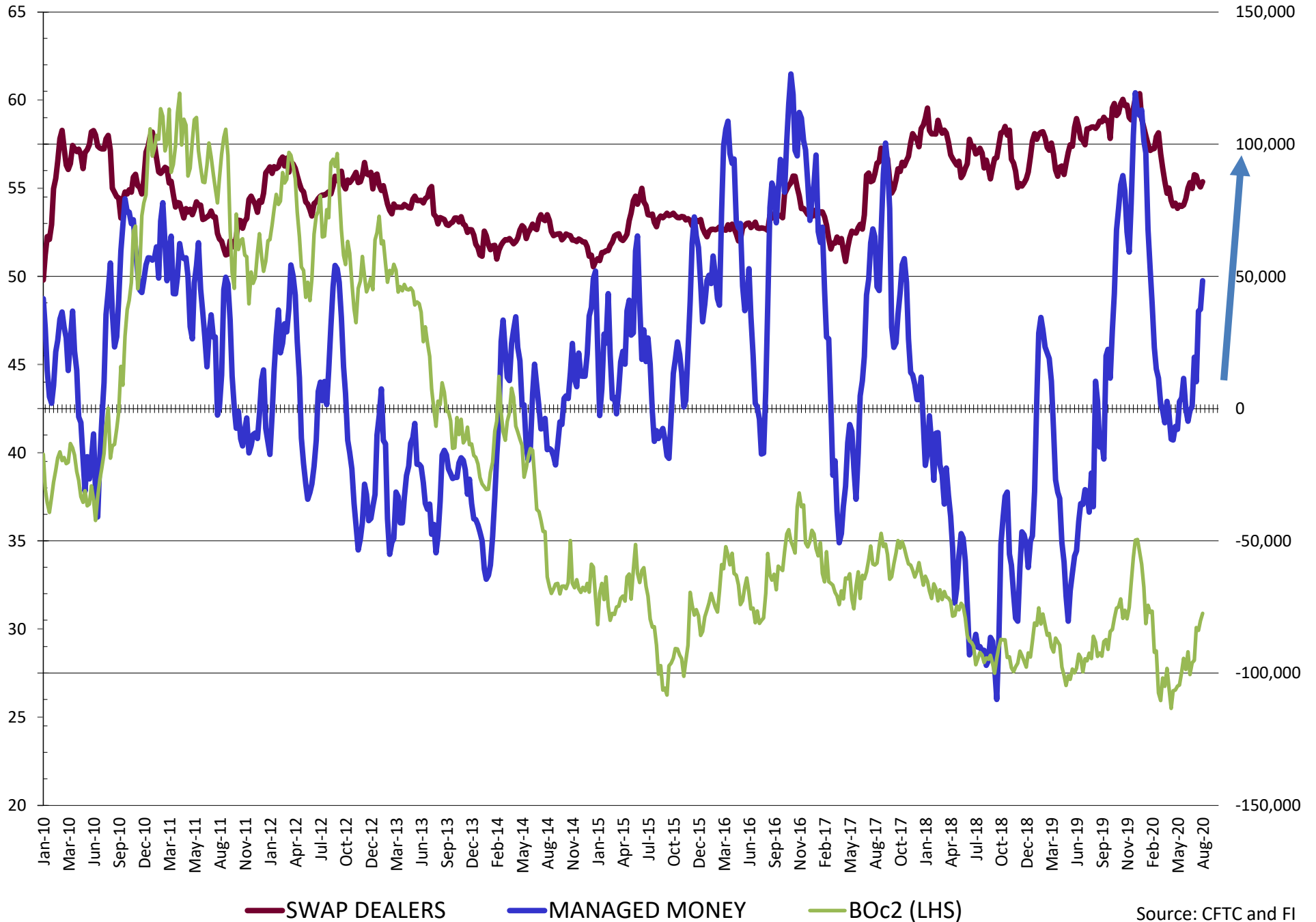


# NET POSITION FUTURES AND OPTIONS OF SWAP AND MANAGED FUNDS IN SOYBEAN MEAL



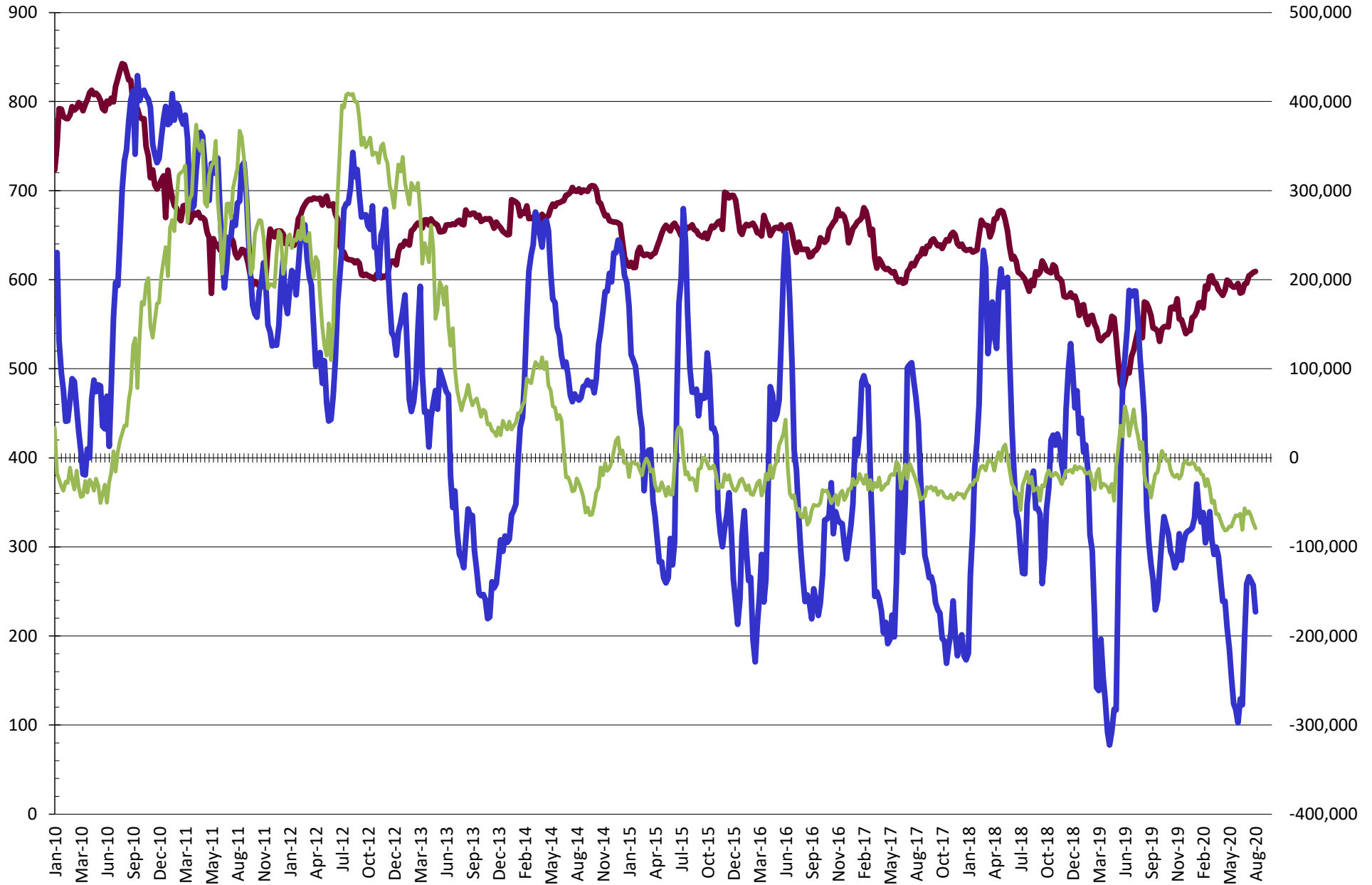


# NET POSITION FUTURES AND OPTIONS OF SWAP AND MANAGED FUNDS IN SOYBEAN OIL



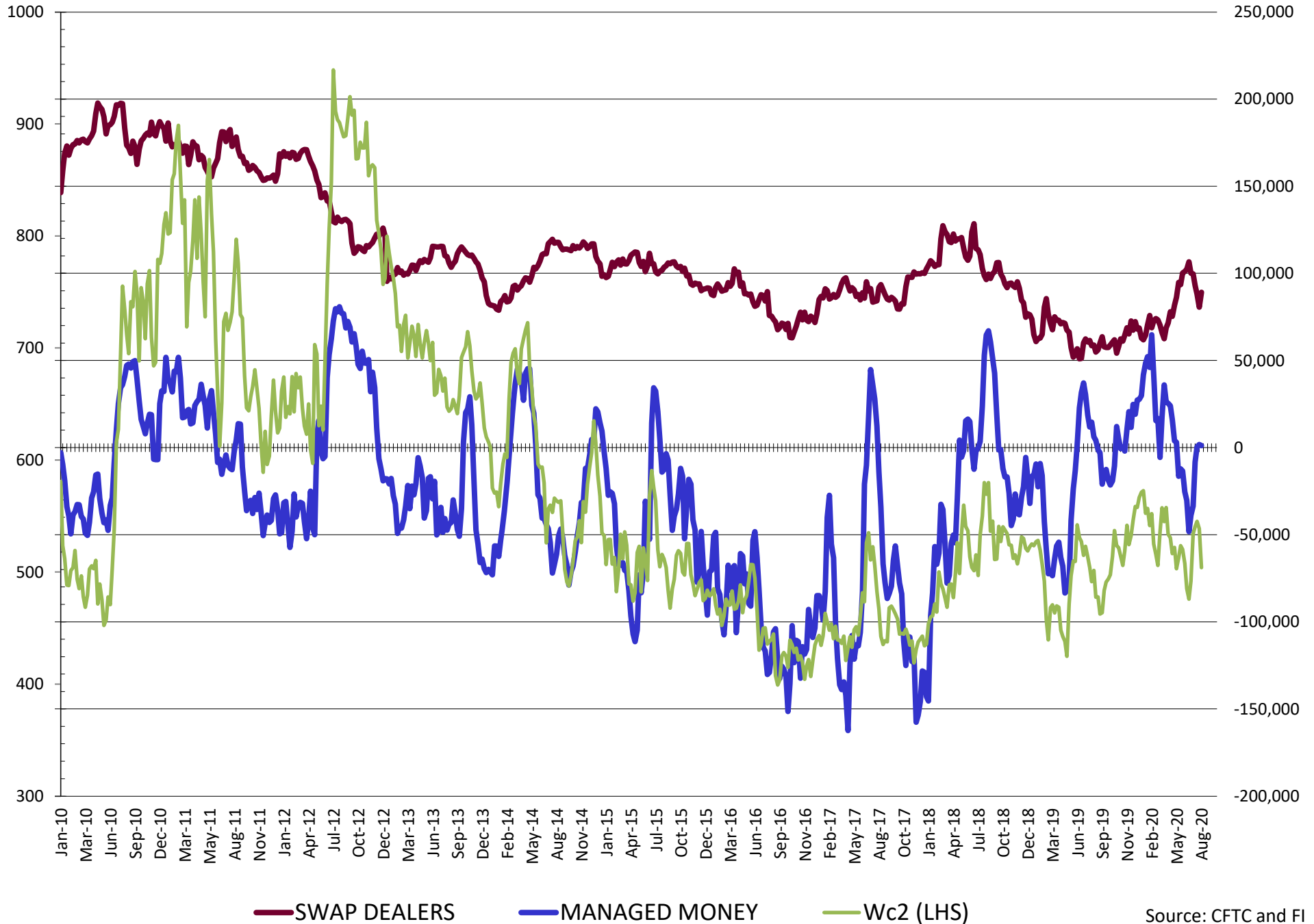
Source: CFTC and FI  
8/7/2020

# NET POSITION FUTURES AND OPTIONS OF SWAP AND MANAGED FUNDS IN CORN

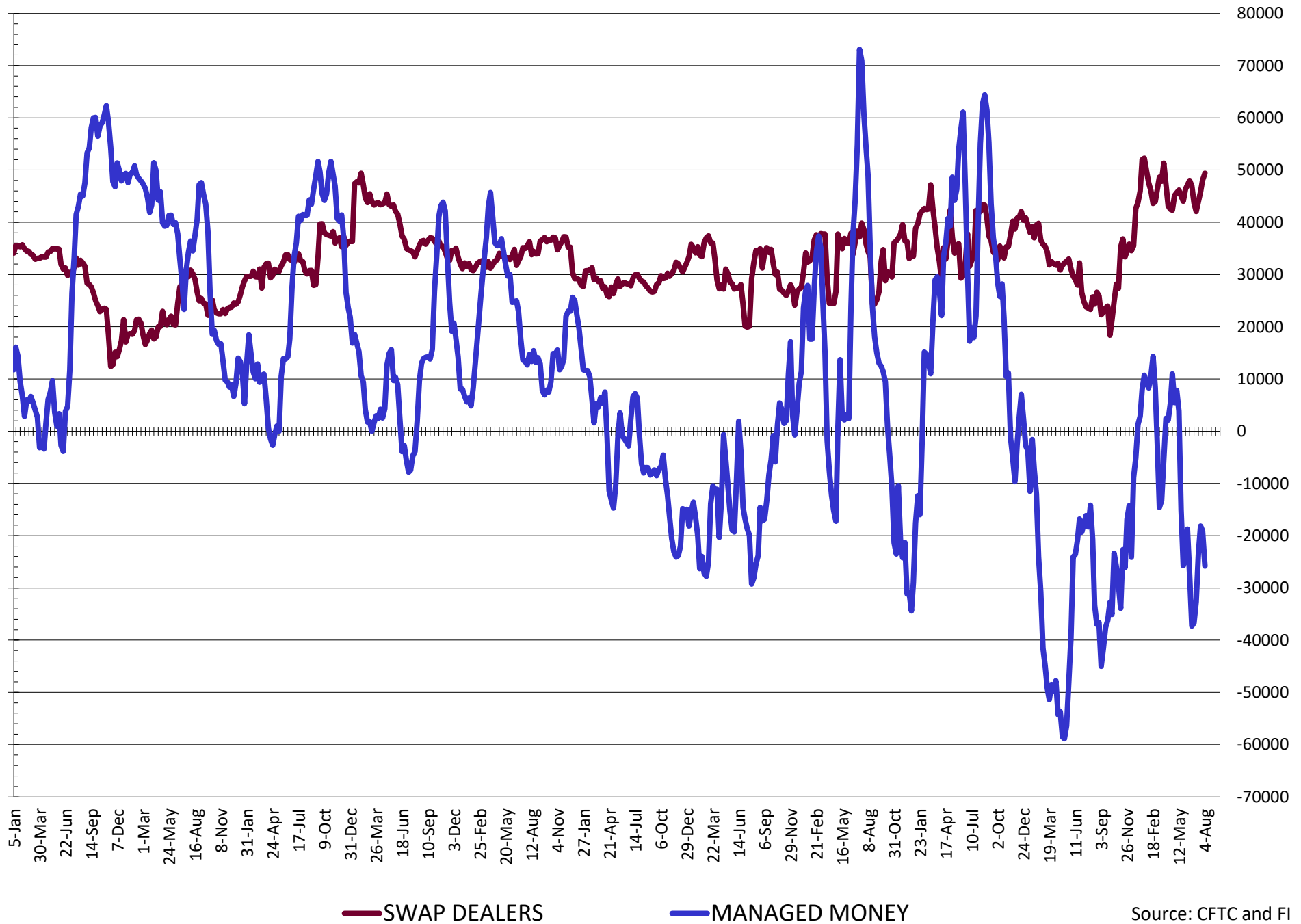


— SWAP DEALERS     
 — MANAGED MONEY     
 — Cc2 (LHS)

# NET POSITION FUTURES AND OPTIONS OF SWAP AND MANAGED FUNDS IN CHICAGO WHEAT

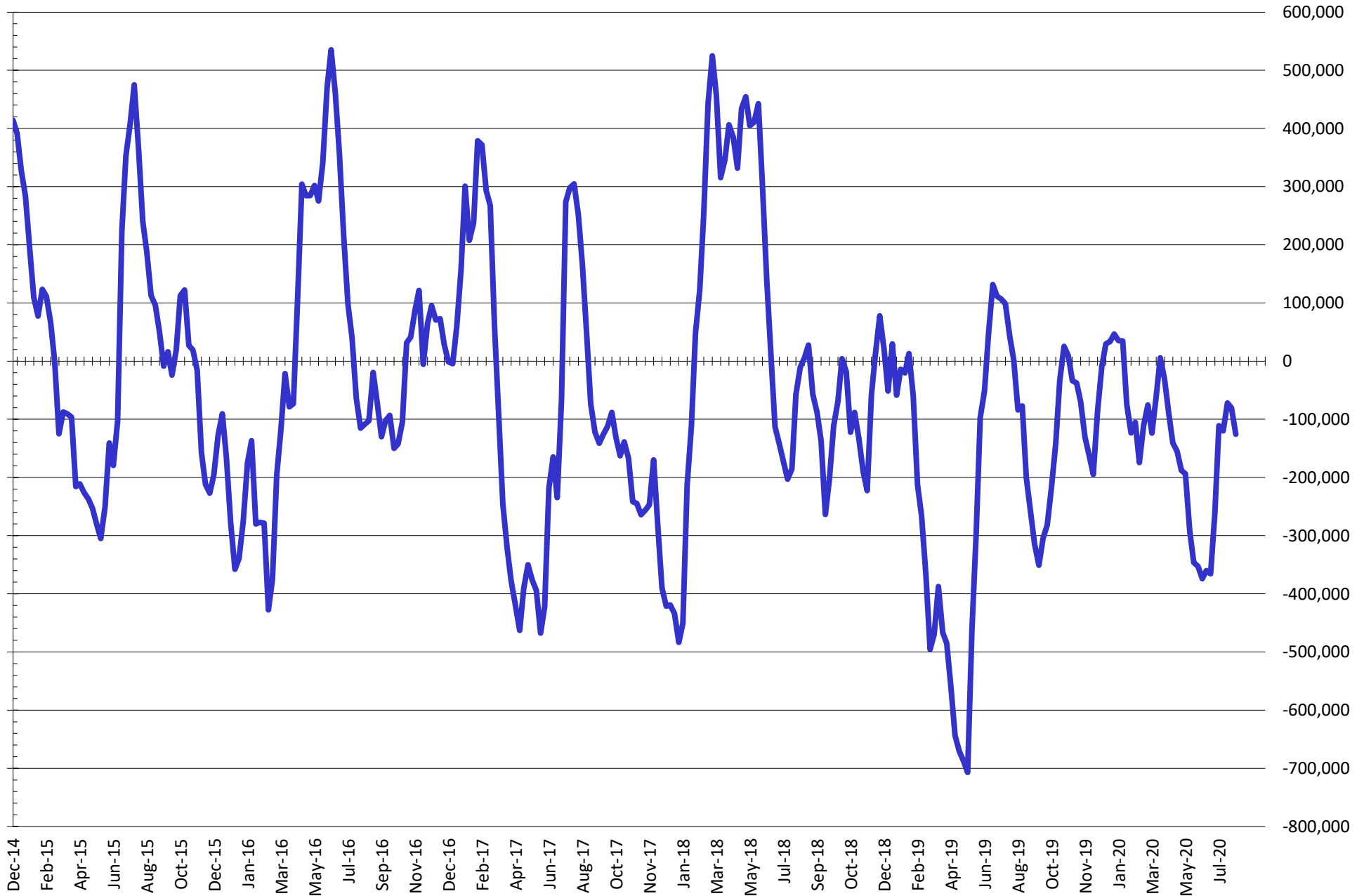


# NET POSITION FUTURES AND OPTIONS OF SWAP AND MANAGED FUNDS IN KANSAS WHEAT



Source: CFTC and FI  
8/7/2020

# NET POSITION FUTURES AND OPTIONS OF SWAP AND MANAGED FUNDS IN COMBINED SRW, HRW, CORN, SOYBEANS, SOYMEAL AND SOYOIL



— Net Managed Money

Source: CFTC and FI  
8/7/2020

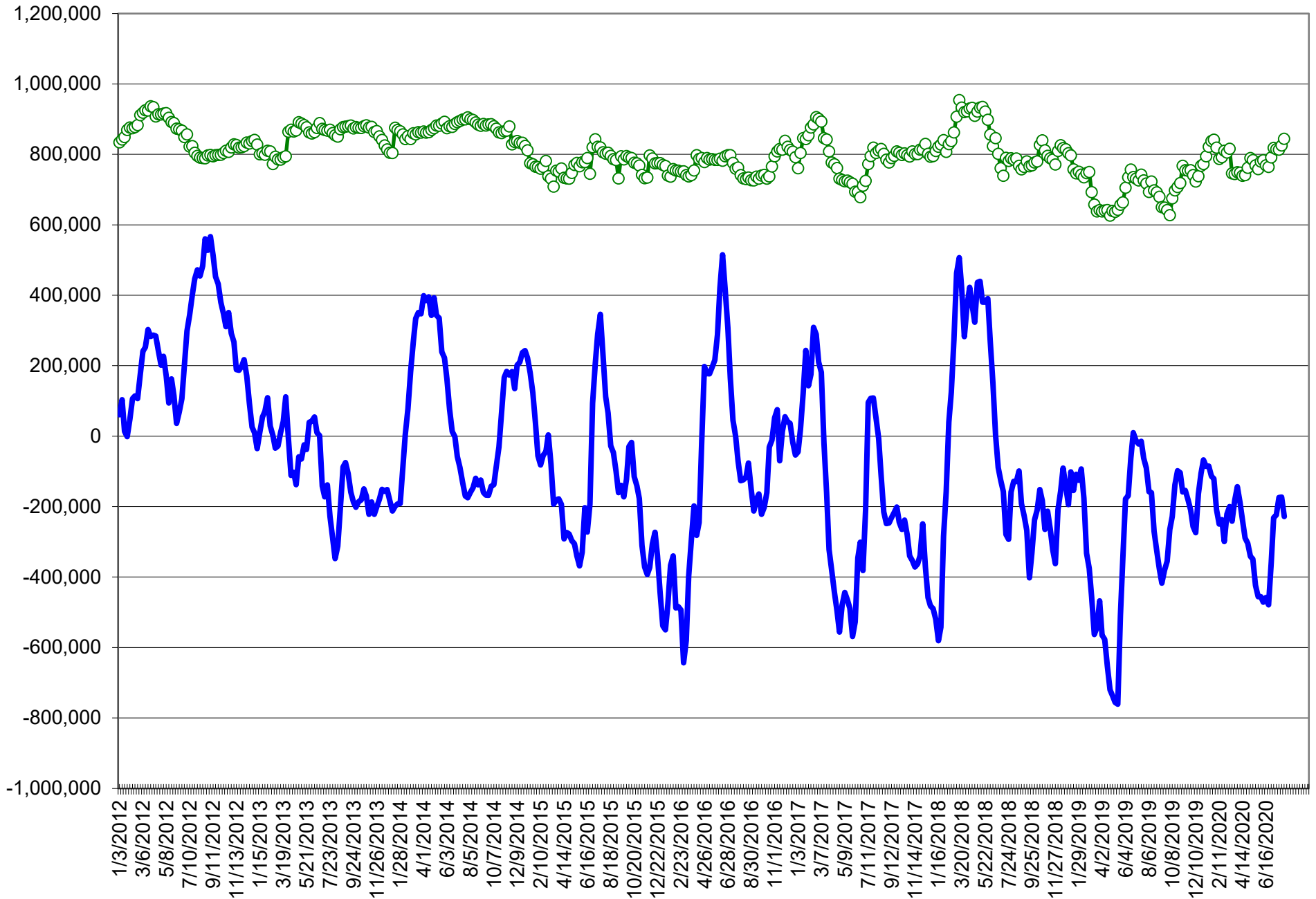
**COMMITMENT OF TRADERS**  
**FUTURES & OPTIONS NET POSITIONS (INDEX BROKEN OUT)**  
**AS OF 08/04/2020**  
(IN THOUSAND CONTRACTS)

	COMMERCIAL				(FUND) NON COMMERCIAL				(SPEC) NON-REPORTABLE			
	4-Aug	28-Jul	21-Jul	14-Jul	4-Aug	28-Jul	21-Jul	14-Jul	4-Aug	28-Jul	21-Jul	14-Jul
	WHEAT											
Chicago	(93.3)	(86.7)	(84.8)	(84.9)	(12.8)	(16.9)	(19.6)	(20.7)	(21.9)	(20.4)	(22.0)	(18.5)
Kansas City	(25.4)	(32.1)	(30.1)	(24.4)	(33.2)	(27.6)	(27.4)	(31.8)	3.6	3.8	3.6	2.9
Minneapolis	-	-	-	-	-	-	-	-	-	-	-	-
All Wheat	(118.7)	(118.9)	(114.9)	(109.4)	(46.0)	(44.4)	(47.0)	(52.5)	(18.3)	(16.6)	(18.4)	(15.6)
CORN	(64.0)	(103.5)	(100.5)	(101.5)	(200.8)	(161.5)	(165.0)	(171.6)	(46.3)	(45.3)	(43.0)	(38.7)
OATS	-	-	-	-	-	-	-	-	-	-	-	-
SOYBEANS	(179.1)	(198.2)	(205.8)	(203.7)	15.9	29.6	39.1	35.4	(14.3)	(7.1)	(3.8)	(0.2)
SOY OIL	(136.2)	(118.9)	(121.3)	(86.5)	26.1	17.7	23.0	(9.7)	17.1	11.7	11.1	7.1
SOY MEAL	(70.7)	(73.0)	(64.0)	(63.1)	(23.7)	(14.5)	(24.5)	(25.4)	14.8	17.5	21.6	20.9

	TOTAL OPEN INTEREST				(INDEX) COMMERCIAL INDEX TRADERS				(INDEX) % NET OF TOTAL OPEN INTEREST			
	4-Aug	28-Jul	21-Jul	14-Jul	4-Aug	28-Jul	21-Jul	14-Jul	4-Aug	28-Jul	21-Jul	14-Jul
	WHEAT											
Chicago	479,929	462,888	483,480	490,448	128.0	124.1	126.3	124.2	26.7%	26.8%	26.1%	25.3%
Kansas City	293,675	288,210	285,181	269,513	55.0	55.9	54.0	53.3	18.7%	19.4%	18.9%	19.8%
Minneapolis	-	-	-	-	-	-	-	-	-	-	-	-
All Wheat	773,604	751,098	768,661	759,961	183.0	179.9	180.3	177.5	23.7%	24.0%	23.5%	23.4%
CORN	2,030,923	1,950,332	1,905,548	1,876,486	311.1	310.3	308.5	311.8	15.3%	15.9%	16.2%	16.6%
OATS	-	-	-	-	-	-	-	-	-	-	-	-
SOYBEANS	975,735	967,977	994,119	975,293	177.4	175.7	170.5	168.6	18.2%	18.1%	17.2%	17.3%
SOY OIL	470,078	460,732	481,302	467,484	93.0	89.5	87.1	89.1	19.8%	19.4%	18.1%	19.1%
SOY MEAL	476,417	466,434	473,404	463,141	79.5	70.1	66.8	67.6	16.7%	15.0%	14.1%	14.6%

SOURCE: CFTC & FI

# NET POSITION FUTURES AND OPTIONS OF SPECULATORS AND INDEX FUNDS IN COMBINED SRW, HRW, CORN, SOYBEANS, SOYMEAL AND SOYOIL



Source: CFTC and FI

○ Net Index

— Net Speculator

## Traditional Daily Estimate of Funds 8/4/20

	(Neg)-"Short"	Pos-"Long"			
Actual less Est.	8.8	(28.2)	2.1	(0.4)	12.5
	<b>Corn</b>	<b>Bean</b>	<b>Chi. Wheat</b>	<b>Meal</b>	<b>Oil</b>
Act.	(148.4)	92.0	13.4	10.7	53.9
5-Aug	8.0	(4.0)	2.0	(2.0)	1.0
6-Aug	1.0	(2.0)	(7.0)	(2.0)	2.0
7-Aug	(15.0)	(9.0)	(5.0)	(1.0)	(4.0)
10-Aug					
11-Aug					
<b>FI Est. of Futures Only 8/4/20</b>	<b>(154.4)</b>	<b>77.0</b>	<b>3.4</b>	<b>5.7</b>	<b>52.9</b>
<b>FI Est. Futures &amp; Options</b>	<b>(106.5)</b>	<b>45.8</b>	<b>6.2</b>	<b>(8.7)</b>	<b>50.2</b>
Futures only record long	498.2	260.4	86.5	167.5	160.2
	2/1/2011	6/27/2017	8/7/2018	5/1/2018	11/1/2016
Futures only record short	(235.0)	(118.3)	(130.0)	(49.5)	(69.8)
	6/9/2020	4/30/2019	4/25/2017	3/1/2016	9/18/2018
Futures and options record net long	458.5	259.8	64.8	132.1	159.2
	9/28/2010	5/1/2012	8/7/2012	5/1/2018	1/1/2016
Futures and options record net short	(270.6)	(132.0)	(143.3)	(64.1)	(77.8)
	4/26/2019	4/30/2019	4/25/2017	3/1/2016	9/18/2018

## Managed Money Daily Estimate of Funds 8/4/20

	Corn	Bean	Chi. Wheat	Meal	Oil
Latest CFTC Fut. Only	(194.1)	43.7	(1.0)	(19.9)	49.1
Latest CFTC F&O	(172.8)	44.2	1.2	(21.0)	48.3
FI Est. Managed Fut. Only	(200)	29	(11)	(25)	48
FI Est. Managed Money F&O	(179)	29	(9)	(26)	47

## Index Funds Latest Positions (as of last Tuesday)

Index Futures & Options	311.1	177.4	128.0	NA	93.0
Change From Previous Week	0.8	1.7	4.0	NA	3.5

Source: Reuters, CFTC & FI (FI est. are noted with latest date)



# Disclaimer

TO CLIENTS/PROSPECTS OF FUTURES INTERNATIONAL, SEE RISK DISCLOSURE BELOW:

THIS COMMUNICATION IS CONVEYED AS A SOLICITATION FOR ENTERING INTO A DERIVATIVES TRANSACTION.

Any trading recommendations and market or other information to Customer by Futures International (FI), although based upon information obtained from sources believed by FI to be reliable may not be accurate and may be changed without notice to customer. FI makes no guarantee as to the accuracy or completeness of any of the information or recommendations furnished to Customer. Customer understands that FI, its managers, employees and/or affiliates may have a position in commodity futures, options or other derivatives which may not be consistent with the recommendations furnished by FI to Customer.

The risk of trading futures and options and other derivatives involves a substantial risk of loss and is not suitable for all persons. In purchasing an option, the risk is limited to the premium paid, and all commissions and fees involved with the trade. When an option is shorted or written, the writer of the option has unlimited risk with respect to the option written. The use of options strategies such as a straddles and strangles involve multiple option positions and may substantially increase the amount of commissions and fees paid to execute the strategy. Option prices do not necessarily move in tandem with cash or futures prices. Each person must consider whether a particular trade, combination of trades or strategy is suitable for that person's financial means and objectives.

This material may include discussions of seasonal patterns, however, futures prices have already factored in the seasonal aspects of supply and demand, and seasonal patterns are no indication of future market trends. Finally, past performance is not indicative of future results.

This communication may contain links to third party websites which are not under the control of FI and FI is not responsible for their content. Products and services are offered only in jurisdictions where solicitation and sale are lawful, and in accordance with applicable laws and regulations in each such jurisdiction.