

# CFTC COMMITMENT OF TRADERS REPORT

As of 7/21/2020

## TRADITIONAL FUNDS net position changes

Wed to Tue, in 000 contracts

	Corn	Bean	Meal	Oil	Chi. Wheat	KC Wheat	Min Wheat
Futures Only	0.8	(6.2)	0.6	29.5	2.1	6.1	(2.3)
Futures & Options Combined	2.2	4.4	(0.8)	30.8	3.7	4.6	(2.3)

## TRADITIONAL COMMERCIAL net position changes

	Corn	Bean	Meal	Oil	Chi. Wheat	KC Wheat	Min Wheat
Futures Only	(1.4)	9.0	(1.3)	(33.6)	1.0	(6.7)	0.9
Futures & Options Combined	2.0	(0.8)	0.0	(34.8)	(0.3)	(5.3)	0.9

## MANAGED MONEY net position changes

	Corn	Bean	Meal	Oil	Chi. Wheat	KC Wheat	Min Wheat
Futures Only	(6.9)	9.4	1.4	27.6	9.1	5.5	(2.1)
Futures & Options Combined	(4.1)	9.8	1.3	26.7	8.8	5.4	(2.1)

## SWAP DEALERS net position changes

	Corn	Bean	Meal	Oil	Chi. Wheat	KC Wheat	Min Wheat
Futures Only	(0.1)	1.6	3.8	(3.1)	(4.9)	1.9	(0.2)
Futures & Options Combined	1.7	(1.7)	3.7	(3.0)	(5.1)	1.9	(0.2)

## PRODUCERS/END USERS net position changes

	Corn	Bean	Meal	Oil	Chi. Wheat	KC Wheat	Min Wheat
Futures Only	(1.2)	7.4	(5.1)	(30.5)	5.9	(8.5)	1.1
Futures & Options Combined	0.3	0.8	(3.6)	(31.7)	4.9	(7.2)	1.1

## INDEX net position changes

	Corn	Bean	Meal	Oil	Chi. Wheat	KC Wheat	Min Wheat
Futures & Options Combined	(3.3)	2.0	(0.8)	(1.9)	2.2	0.6	NA

## SUPPLEMENTAL NON-COMMERCIAL net position changes

	Corn	Bean	Meal	Oil	Chi. Wheat	KC Wheat	Min Wheat
Futures & Options Combined	6.6	3.7	0.9	32.7	1.2	4.4	NA

## OPEN INTEREST net position changes

Wed to Tue, in 000 contracts

	Corn	Bean	Meal	Oil	Chi. Wheat	KC Wheat	Min Wheat
Futures Only	25.5	19.1	12.9	6.6	(16.0)	13.2	5.8
Futures & Options Combined	29.1	18.8	10.3	13.8	(7.0)	15.7	5.7

Source: CFTC and FI

Wed to Tue, in 000 contracts

7/24/2020

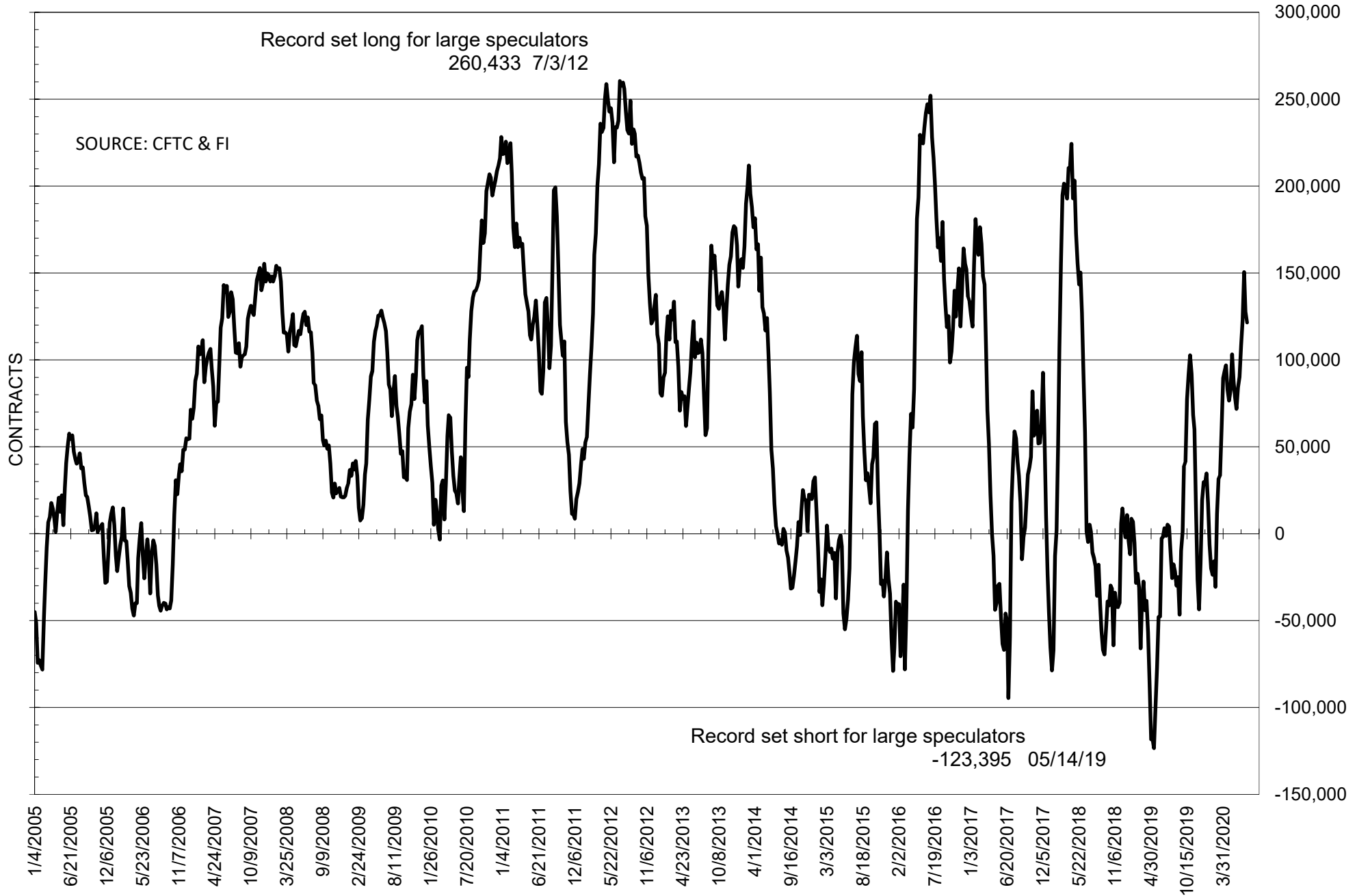
**COMMITMENT OF TRADERS  
FUTURES ONLY NET POSITIONS  
AS OF 07/21/2020  
(IN THOUSAND CONTRACTS)**

	COMMERCIAL				(FUND) NON COMMERCIAL				(SPEC) NON-REPORTABLE			
	21-Jul	14-Jul	7-Jul	30-Jun	21-Jul	14-Jul	7-Jul	30-Jun	21-Jul	14-Jul	7-Jul	30-Jun
	<b>WHEAT</b>											
Chicago	1.7	0.6	26.2	28.4	18.8	16.7	-14.3	-14.6	-20.5	-17.4	-12.0	-13.7
Kansas City	12.7	19.4	28.9	34.6	-15.7	-21.8	-29.0	-35.3	3.0	2.4	0.1	0.7
Minneapolis	13.8	12.9	13.4	12.7	-17.7	-15.4	-15.0	-14.8	3.9	2.5	1.6	2.1
All Wheat	28.1	32.9	68.6	75.7	-14.6	-20.5	-58.3	-64.8	-13.6	-12.4	-10.3	-10.9
<b>CORN</b>	112.2	113.6	120.3	166.4	-98.9	-99.7	-107.2	-157.4	-13.4	-13.9	-13.1	-8.9
OATS	-2.7	-2.6	-2.8	-2.8	2.0	2.2	2.4	2.3	0.7	0.4	0.4	0.5
<b>SOYBEANS</b>	-118.3	-127.3	-152.4	-127.3	121.5	127.7	150.5	122.9	-3.2	-0.4	1.9	4.4
SOY OIL	-56.2	-22.6	-35.0	-18.0	45.8	16.3	27.2	10.2	10.5	6.4	7.9	7.8
SOY MEAL	-26.2	-24.8	-35.7	-5.7	6.6	6.0	13.6	-14.8	19.6	18.9	22.1	20.5

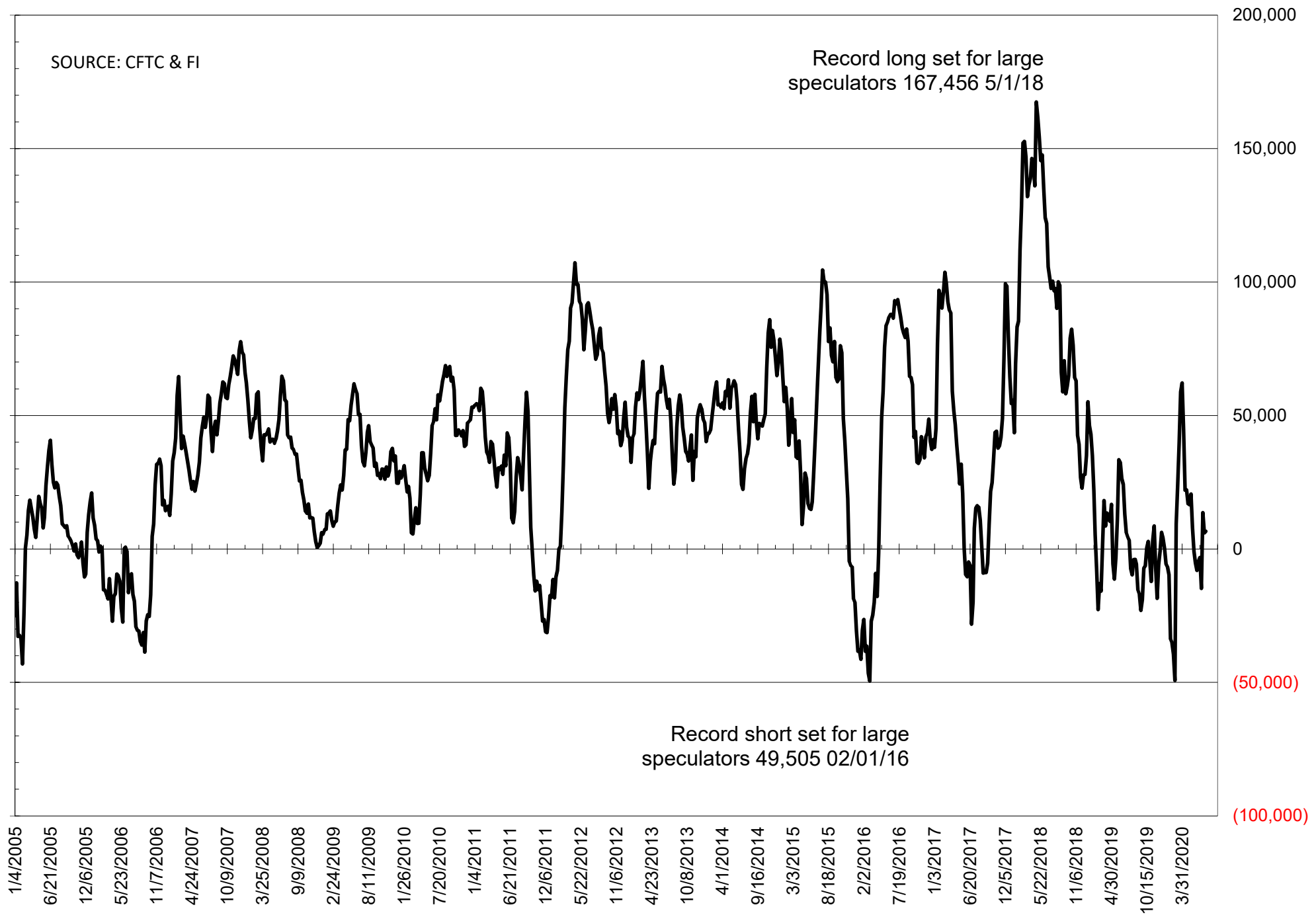
	TOTAL OPEN INTEREST				NEARBY FUTURES PRICE					21-Jul-20 LAST REPORTED % HELD BY TRADERS			
	21-Jul	14-Jul	7-Jul	30-Jun	Q/U Latest	Q/U 21-Jul	Q/U 14-Jul	Q/U 7-Jul	N 30-Jun	LARGE FUND		SMALL	
										LONG	SHORT	LONG	SHORT
<b>WHEAT</b>													
Chicago	373461	389500	410198	403108	540.25	527.75	495.75	492.25	486.00	0%	28%	0%	12%
Kansas City	261941	248761	240418	235012	449.75	442.25	441.50	440.50	435.00	0%	31%	0%	7%
Minneapolis	68550	62788	62977	61738	515.25	510.50	513.00	520.25	514.75	0%	42%	0%	14%
<b>CORN</b>	1523220	1497743	1489681	1559526	327.00	322.75	343.25	340.75	325.00	0%	24%	0%	12%
OATS	4271	4324	4439	4292	285.50	279.00	281.50	290.25	304.25	0%	0%	0%	17%
<b>SOYBEANS</b>	837841	818767	840495	811476	905.25	896.50	896.00	878.50	875.00	24%	9%	7%	7%
SOY OIL	444915	438301	444042	430592	29.74	30.04	28.86	28.05	28.17	0%	10%	0%	6%
SOY MEAL	433462	420582	433050	441205	291.10	286.00	295.10	289.30	286.30	0%	17%	0%	6%

SOURCE: CFTC & FI

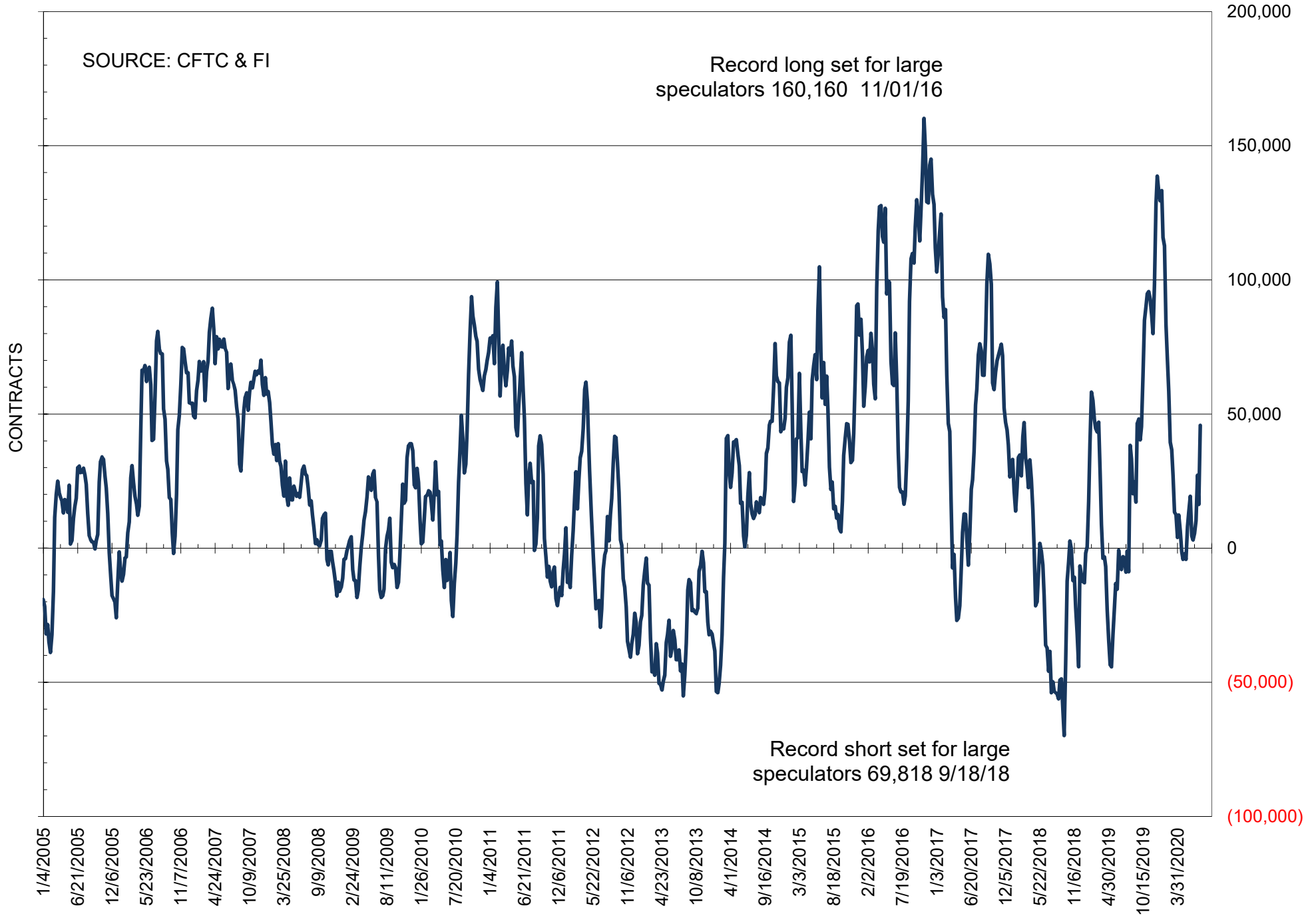
# NET POSITION OF FUTURES ONLY LARGE SPECS IN SOYBEANS



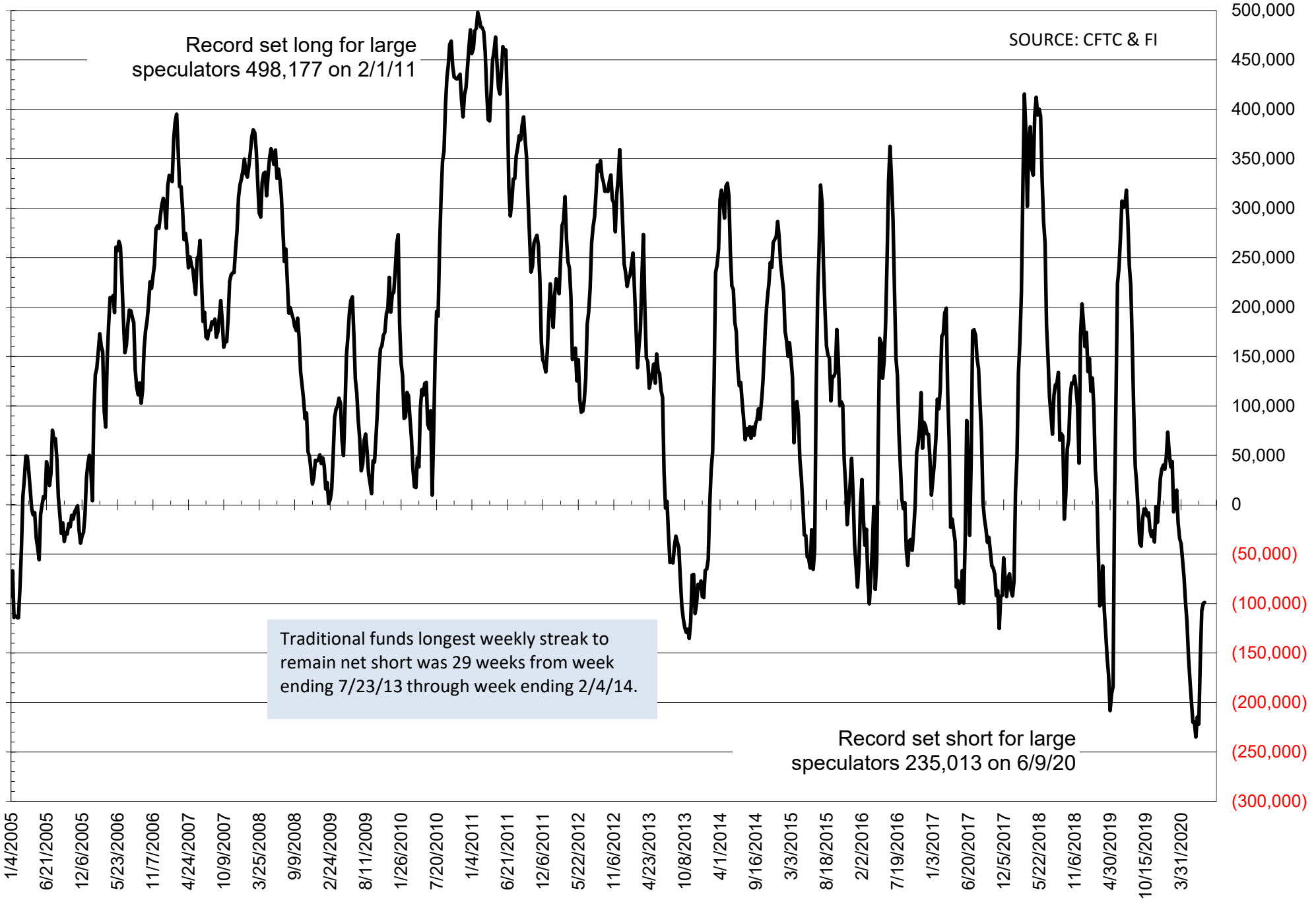
# NET POSITION OF FUTURES ONLY LARGE SPECS IN SOYMEAL



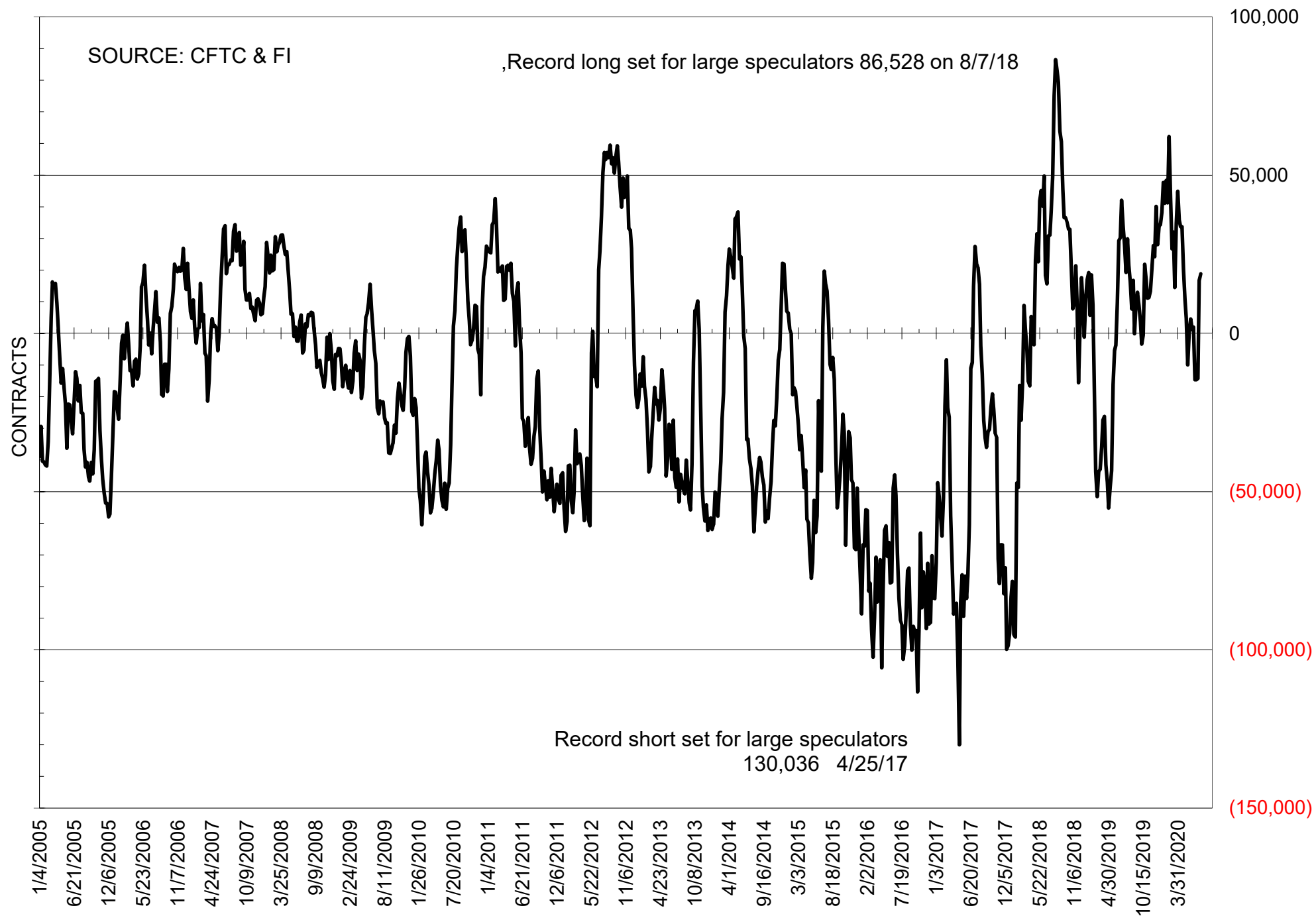
# NET POSITION OF FUTURES ONLY LARGE SPECS IN SOYOIL



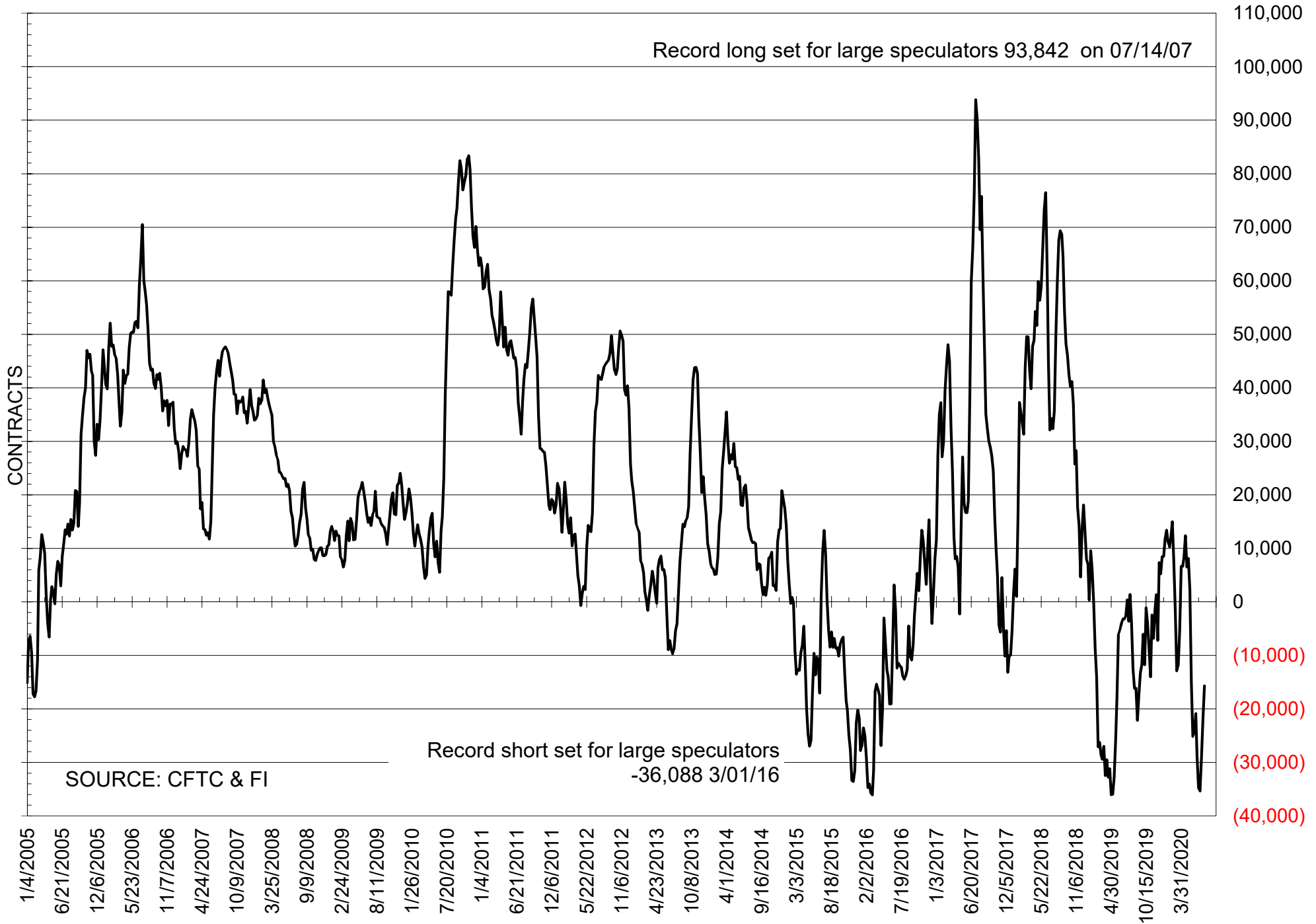
# NET POSITION OF LARGE SPECULATORS IN CORN



# NET POSITION OF FUTURES ONLY LARGE SPECS IN CHICAGO WHEAT

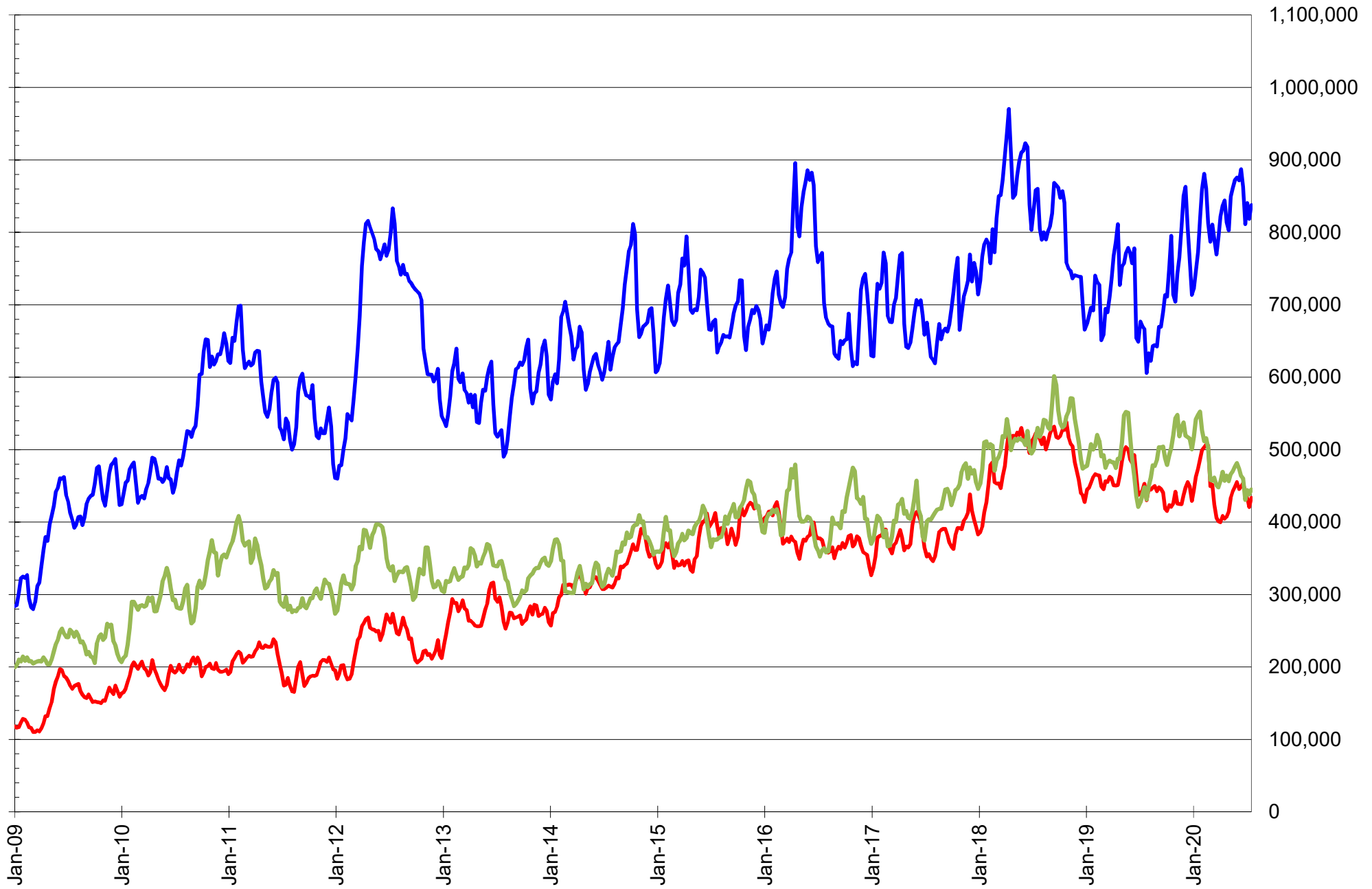


# NET POSITION OF LARGE SPECULATORS IN KANSAS CITY WHEAT





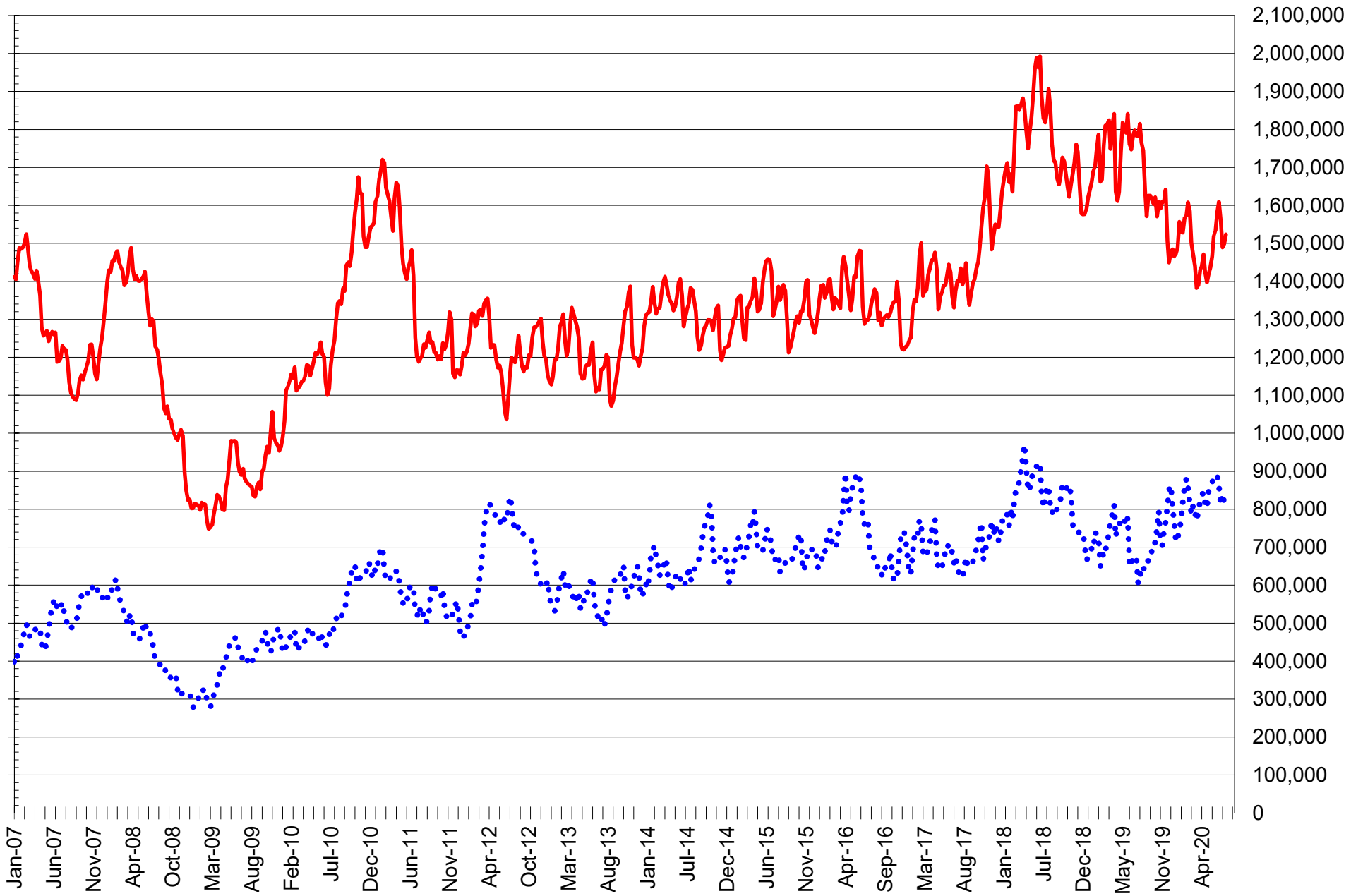
# TOTAL OPEN INTEREST IN SOYBEANS, MEAL AND OIL, FUTURES ONLY



SOURCE: CFTC & FI

— SOYBEANS — SOYBEAN MEAL — SOYBEAN OIL

# TOTAL OPEN INTEREST IN CORN AND SOYBEANS, FUTURES ONLY



SOURCE: CFTC & FI

— CORN

•••• SOYBEANS

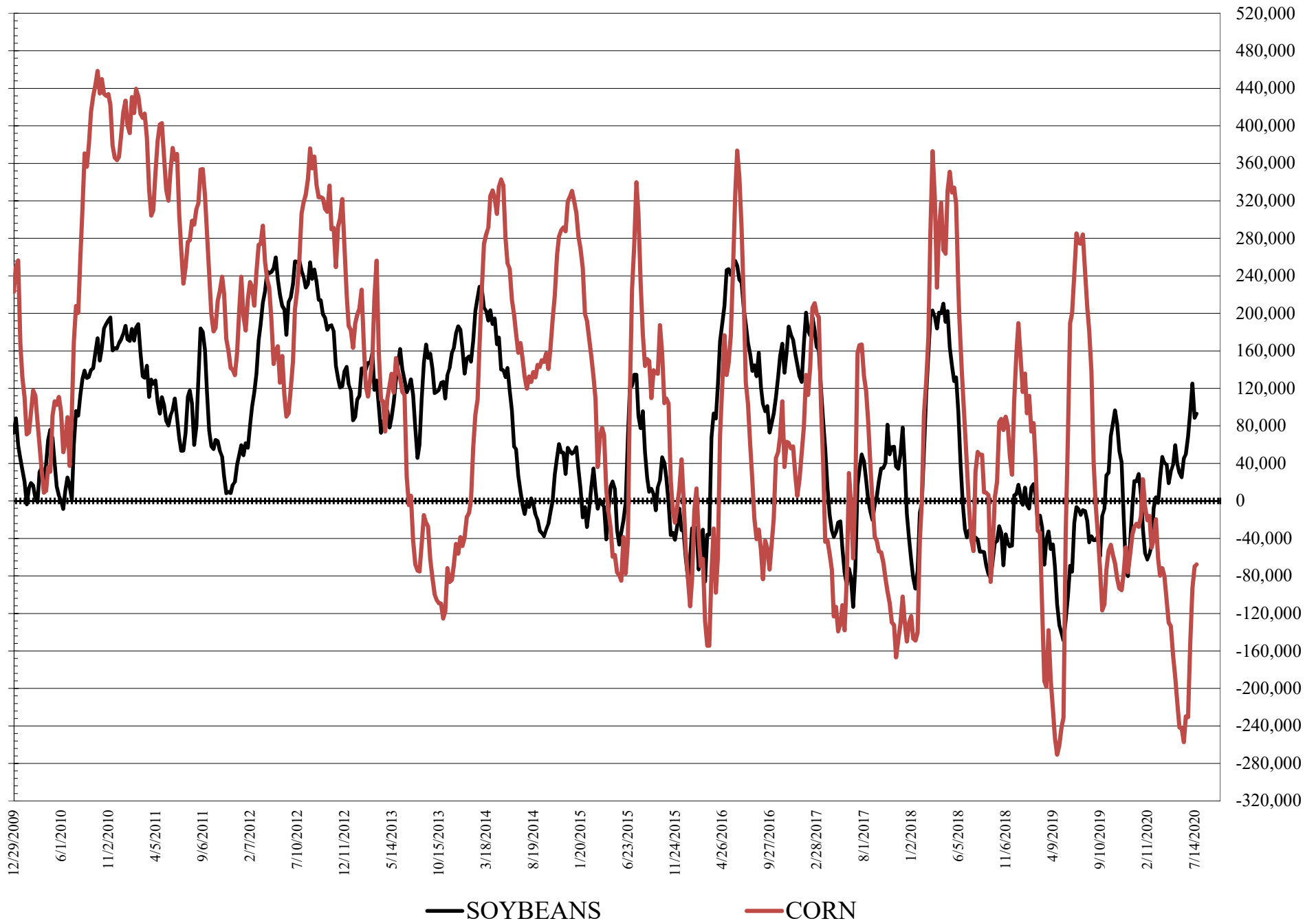
**COMMITMENT OF TRADERS  
FUTURES & OPTIONS NET POSITIONS  
AS OF 07/21/2020  
(IN THOUSAND CONTRACTS)**

	COMMERCIAL				(FUND) NON COMMERCIAL				(SPEC) NON-REPORTABLE			
	21-Jul	14-Jul	7-Jul	30-Jun	21-Jul	14-Jul	7-Jul	30-Jun	21-Jul	14-Jul	7-Jul	30-Jun
	<b>WHEAT</b>											
Chicago	7.1	7.4	40.0	43.5	14.9	11.1	-28.0	-29.8	-22.0	-18.5	-12.0	-13.7
Kansas City	17.7	23.0	31.6	37.4	-21.3	-25.9	-32.2	-38.3	3.6	2.9	0.6	0.9
Minneapolis	14.3	13.4	13.9	13.0	-18.4	-16.0	-15.6	-15.3	4.1	2.6	1.7	2.2
All Wheat	39.1	43.7	85.5	94.0	-24.8	-30.8	-75.8	-83.4	-14.3	-12.9	-9.7	-10.6
<b>CORN</b>	110.7	108.6	115.2	169.1	-67.7	-69.9	-93.2	-152.2	-43.0	-38.7	-22.0	-16.9
OATS	-2.6	-2.5	-2.7	-2.7	1.9	2.1	2.3	2.2	0.7	0.4	0.4	0.5
<b>SOYBEANS</b>	-89.2	-88.4	-130.2	-101.7	93.0	88.6	125.2	95.0	-3.8	-0.2	5.0	6.6
SOY OIL	-57.5	-22.7	-38.2	-20.7	46.3	15.6	29.9	12.3	11.1	7.1	8.3	8.4
SOY MEAL	-14.1	-14.1	-27.1	4.9	-7.5	-6.7	2.9	-27.2	21.6	20.9	24.2	22.3

	TOTAL OPEN INTEREST				% HELD BY TRADERS					
	21-Jul	14-Jul	7-Jul	30-Jun	COMMERCIALS		LARGE (FUNDS)		SMALL (NON-REP)	
					LONG	SHORT	LONG	SHORT	LONG	SHORT
<b>WHEAT</b>										
Chicago	483,480	490,448	496,820	484,999	35%	34%	24%	21%	5%	10%
Kansas City	285,181	269,513	257,653	249,999	45%	39%	21%	28%	8%	7%
Minneapolis	69,996	64,311	64,417	63,073	61%	41%	14%	41%	20%	14%
<b>CORN</b>	1,905,548	1,876,486	1,872,744	1,926,269	47%	42%	14%	17%	11%	13%
OATS	4,585	4,645	4,764	4,623						
<b>SOYBEANS</b>	994,119	975,293	1,001,034	949,644	47%	56%	17%	7%	7%	7%
SOY OIL	481,302	467,484	471,406	457,565	51%	63%	18%	9%	8%	6%
SOY MEAL	473,404	463,141	475,449	480,264	56%	59%	14%	16%	10%	6%

SOURCE: CFTC & FI

# NET POSITION FUTURES AND OPTIONS OF LARGE SPECULATORS IN SOYBEANS AND CORN



**DISAGGREGATED COMMITMENT OF TRADERS**  
**FUTURES ONLY NET POSITIONS**  
**AS OF 07/21/2020**  
(IN THOUSAND CONTRACTS)

	PRODUCER / MERCHANT / PROCESSOR / USER				(INDEX/ETF) SWAP DEALERS				(CTA/CPO/OTHER UNREGISTERED) MANAGED MONEY				
	21-Jul	14-Jul	7-Jul	30-Jun	21-Jul	14-Jul	7-Jul	30-Jun	21-Jul	14-Jul	7-Jul	30-Jun	
	WHEAT												
Chicago	(80.4)	(86.4)	(62.5)	(60.0)	82.1	87.0	88.7	88.4	2.6	(6.5)	(32.4)	(37.6)	
Kansas City	(33.0)	(24.4)	(13.1)	(9.1)	45.7	43.8	42.0	43.7	(19.7)	(25.3)	(34.0)	(36.7)	
Minneapolis	11.8	10.7	11.4	10.8	2.0	2.2	2.0	2.0	(20.7)	(18.5)	(18.1)	(17.7)	
All Wheat	(101.7)	(100.1)	(64.1)	(58.3)	129.8	133.0	132.7	134.0	(37.8)	(50.3)	(84.5)	(92.1)	
CORN	(68.9)	(67.6)	(59.2)	(10.5)	181.1	181.2	179.5	176.9	(155.7)	(148.8)	(150.3)	(211.7)	
OATS	(2.8)	(2.7)	(2.9)	(2.8)	0.1	0.1	0.1	0.1	1.1	1.3	1.6	1.5	
SOYBEANS	(241.2)	(248.7)	(271.7)	(242.3)	122.9	121.4	119.3	115.1	73.1	63.7	90.6	63.4	
SOY OIL	(141.4)	(110.8)	(123.7)	(101.3)	85.1	88.2	88.6	83.4	38.0	10.4	19.1	0.8	
SOY MEAL	(96.6)	(91.4)	(104.1)	(71.3)	70.4	66.6	68.5	65.6	(28.3)	(29.7)	(21.8)	(51.9)	
									Managed % of OI				
									Chicago W	1%	-2%	-8%	-9%
									Corn	-10%	-10%	-10%	-14%
	TOTAL				OTHER REPORTABLE				NON REPORTABLE				
	OPEN INTEREST												
	21-Jul	14-Jul	7-Jul	30-Jun	21-Jul	14-Jul	7-Jul	30-Jun	21-Jul	14-Jul	7-Jul	30-Jun	
WHEAT													
Chicago	373,461	389,500	410,198	403,108	16.2	23.2	18.1	23.0	(20.5)	(17.4)	(12.0)	(13.7)	
Kansas City	261,941	248,761	240,418	235,012	4.0	3.5	5.0	1.4	3.0	2.4	0.1	0.7	
Minneapolis	68,550	62,788	62,977	61,738	3.0	3.1	3.1	2.9	3.9	2.5	1.6	2.1	
All Wheat	703,952	701,049	713,593	699,858	23.2	29.8	26.2	27.3	(13.6)	(12.4)	(10.3)	(10.9)	
CORN	1,523,220	1,497,743	1,489,681	1,559,526	56.8	49.1	43.1	54.2	(13.4)	(13.9)	(13.1)	(8.9)	
OATS	4,271	4,324	4,439	4,292	0.9	0.9	0.8	0.8	0.7	0.4	0.4	0.5	
SOYBEANS	837,841	818,767	840,495	811,476	48.4	64.0	59.9	59.5	(3.2)	(0.4)	1.9	4.4	
SOY OIL	444,915	438,301	444,042	430,592	7.7	5.9	8.1	9.4	10.5	6.4	7.9	7.8	
SOY MEAL	433,462	420,582	433,050	441,205	34.9	35.7	35.4	37.1	19.6	18.9	22.1	20.5	

SOURCE: CFTC & FI

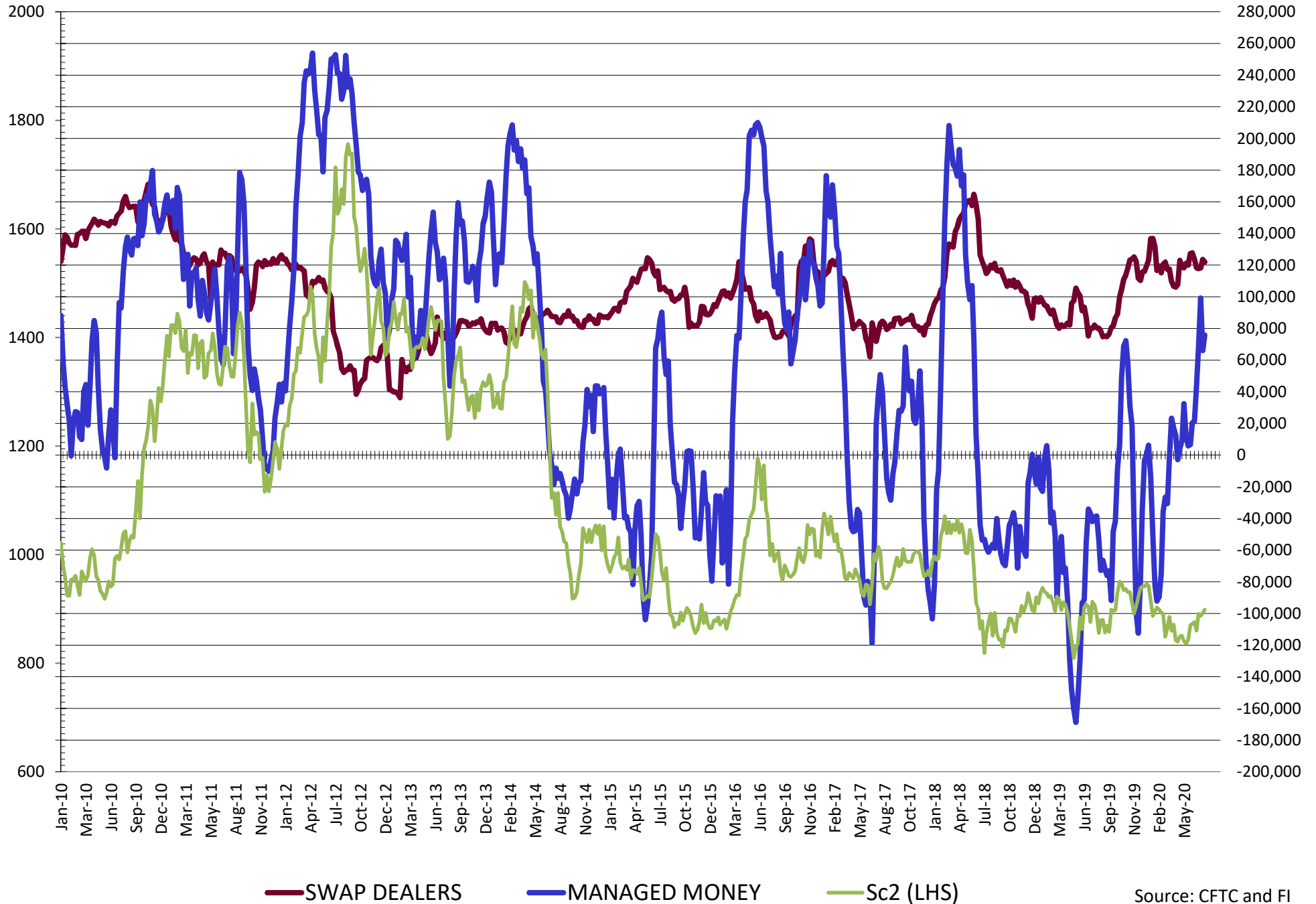
**DISAGGREGATED COMMITMENT OF TRADERS**  
**FUTURES & OPTIONS NET POSITIONS**  
**AS OF 07/21/2020**  
(IN THOUSAND CONTRACTS)

	PRODUCER / MERCHANT / PROCESSOR / USER				(INDEX/ETF) SWAP DEALERS				(CTA/CPO/OTHER UNREGISTERED) MANAGED MONEY			
	21-Jul	14-Jul	7-Jul	30-Jun	21-Jul	14-Jul	7-Jul	30-Jun	21-Jul	14-Jul	7-Jul	30-Jun
	WHEAT											
Chicago	(80.8)	(85.7)	(59.7)	(56.6)	87.9	93.1	99.7	100.1	0.5	(8.3)	(33.5)	(38.8)
Kansas City	(28.1)	(21.0)	(10.4)	(6.3)	45.8	43.9	42.1	43.7	(18.2)	(23.6)	(32.7)	(36.7)
Minneapolis	12.2	11.1	11.8	10.9	2.1	2.3	2.1	2.1	(20.7)	(18.5)	(18.1)	(17.7)
All Wheat	(96.7)	(95.6)	(58.3)	(52.0)	135.8	139.3	143.8	145.9	(38.3)	(50.4)	(84.3)	(93.3)
CORN	(95.3)	(95.7)	(80.6)	(26.1)	206.0	204.3	195.8	195.1	(137.8)	(133.6)	(141.7)	(201.6)
OATS	(2.7)	(2.6)	(2.8)	(2.8)	0.1	0.1	0.1	0.1	1.1	1.3	1.6	1.5
SOYBEANS	(211.1)	(211.9)	(248.3)	(219.4)	121.9	123.5	118.1	117.7	75.8	66.0	99.2	67.8
SOY OIL	(142.5)	(110.8)	(126.7)	(104.0)	85.1	88.1	88.5	83.2	36.9	10.2	19.4	0.8
SOY MEAL	(90.9)	(87.2)	(101.2)	(67.1)	76.8	73.1	74.1	72.0	(29.2)	(30.5)	(21.9)	(52.5)

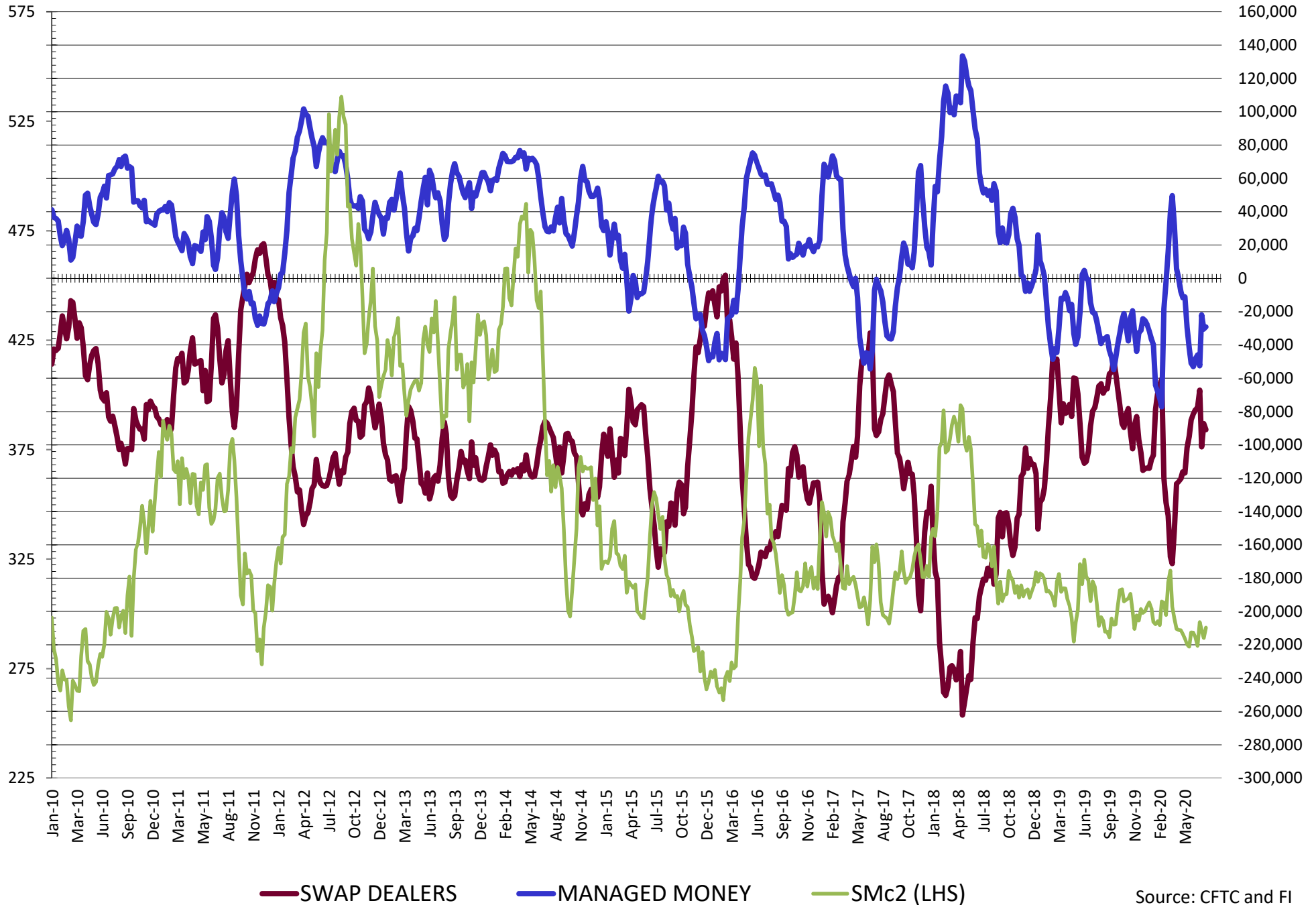
	TOTAL OPEN INTEREST				OTHER REPORTABLE				NON REPORTABLE			
	21-Jul	14-Jul	7-Jul	30-Jun	21-Jul	14-Jul	7-Jul	30-Jun	21-Jul	14-Jul	7-Jul	30-Jun
	WHEAT											
Chicago	483,480	490,448	496,820	484,999	14.4	19.5	5.5	9.0	(22.0)	(18.5)	(12.0)	(13.7)
Kansas City	285,181	269,513	257,653	249,999	(3.1)	(2.3)	0.5	(1.6)	3.6	2.9	0.6	0.9
Minneapolis	69,996	64,311	64,417	63,073	2.3	2.5	2.5	2.5	4.1	2.6	1.7	2.2
All Wheat	838,657	824,272	818,890	798,071	13.6	19.7	8.5	9.9	(14.3)	(12.9)	(9.7)	(10.6)
CORN	1,905,548	1,876,486	1,872,744	1,926,269	70.1	63.7	48.5	49.5	(43.0)	(38.7)	(38.7)	(38.7)
OATS	4,585	4,645	4,764	4,623	0.8	0.8	0.7	0.7	0.7	0.4	0.4	0.5
SOYBEANS	994,119	975,293	1,001,034	949,644	17.1	22.6	26.0	27.2	(3.8)	(0.2)	5.0	6.6
SOY OIL	481,302	467,484	471,406	457,565	9.4	5.4	10.5	11.5	11.1	7.1	8.3	8.4
SOY MEAL	473,404	463,141	475,449	480,264	21.6	23.7	24.8	25.3	21.6	20.9	24.2	22.3

SOURCE: CFTC & FI

# NET POSITION FUTURES AND OPTIONS OF SWAP AND MANAGED FUNDS IN SOYBEANS

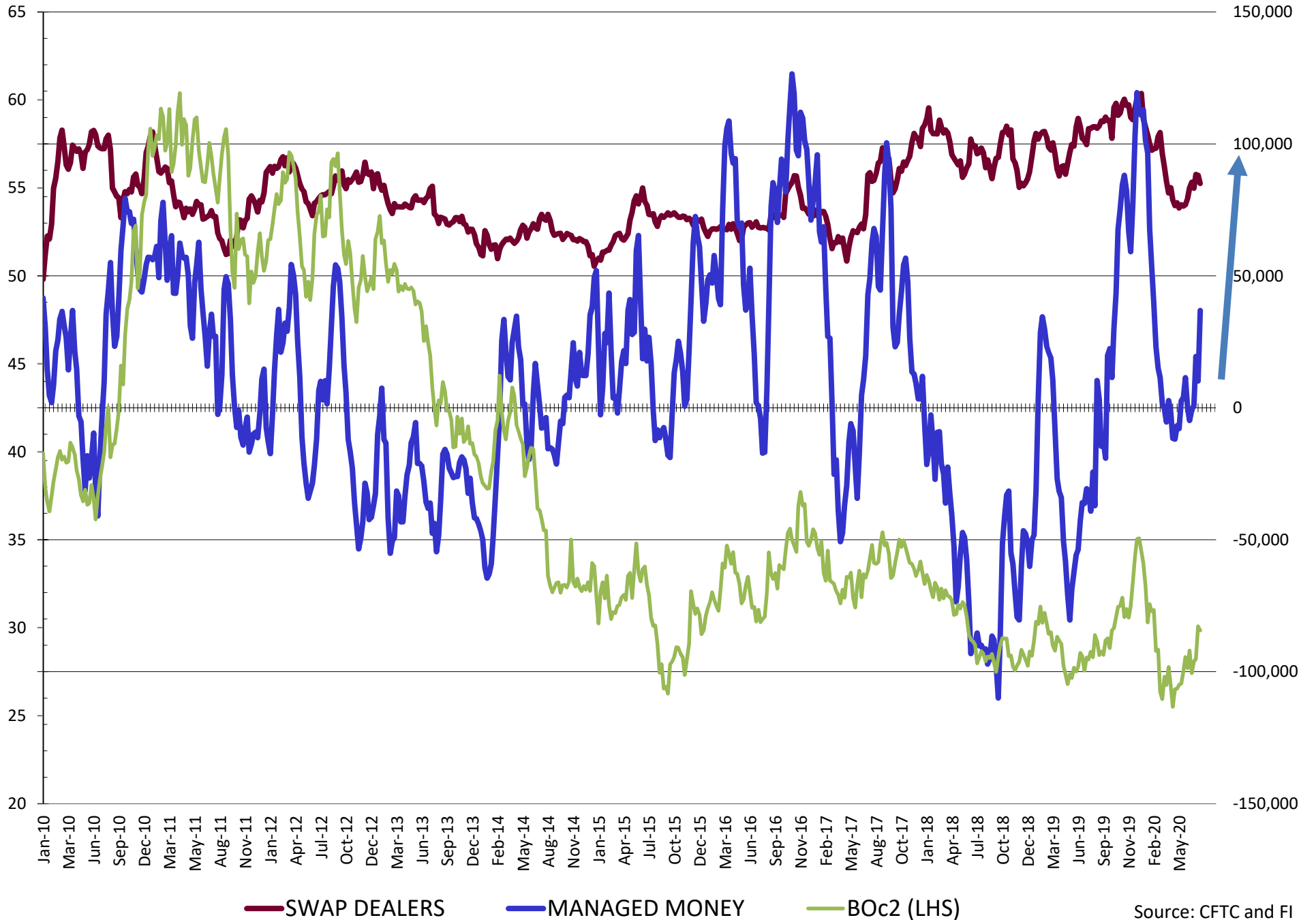


# NET POSITION FUTURES AND OPTIONS OF SWAP AND MANAGED FUNDS IN SOYBEAN MEAL



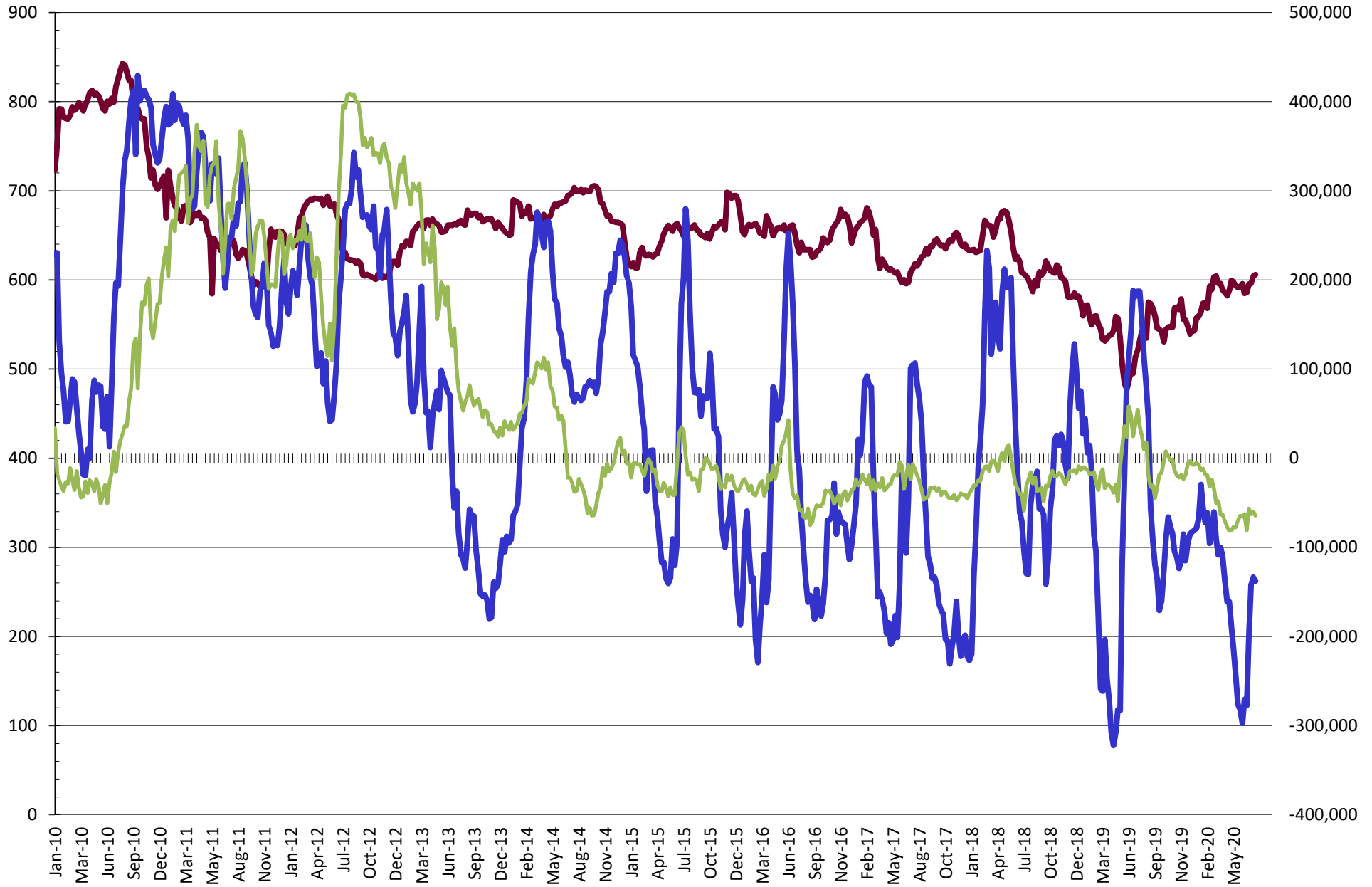


# NET POSITION FUTURES AND OPTIONS OF SWAP AND MANAGED FUNDS IN SOYBEAN OIL



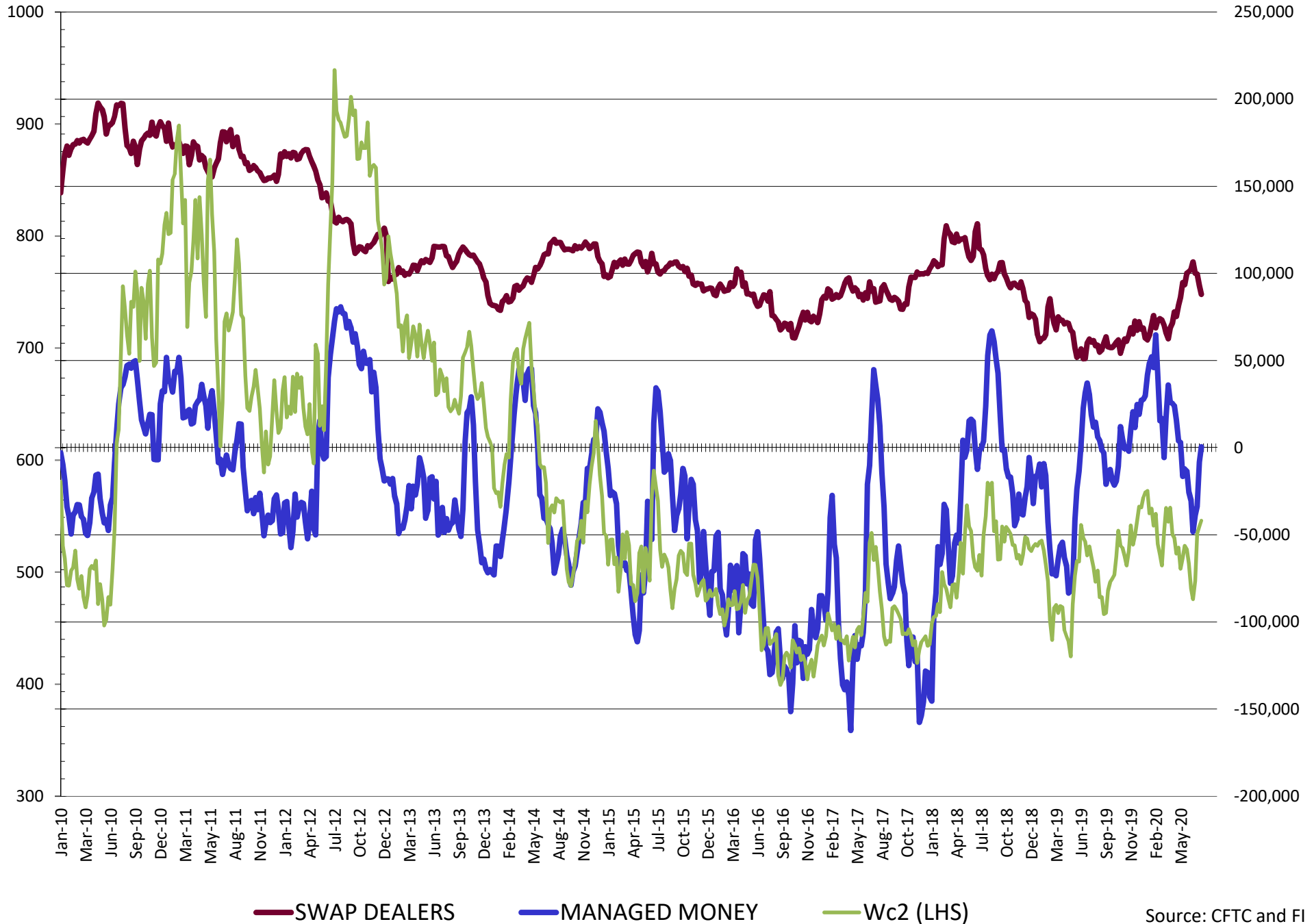
Source: CFTC and FI  
7/24/2020

# NET POSITION FUTURES AND OPTIONS OF SWAP AND MANAGED FUNDS IN CORN

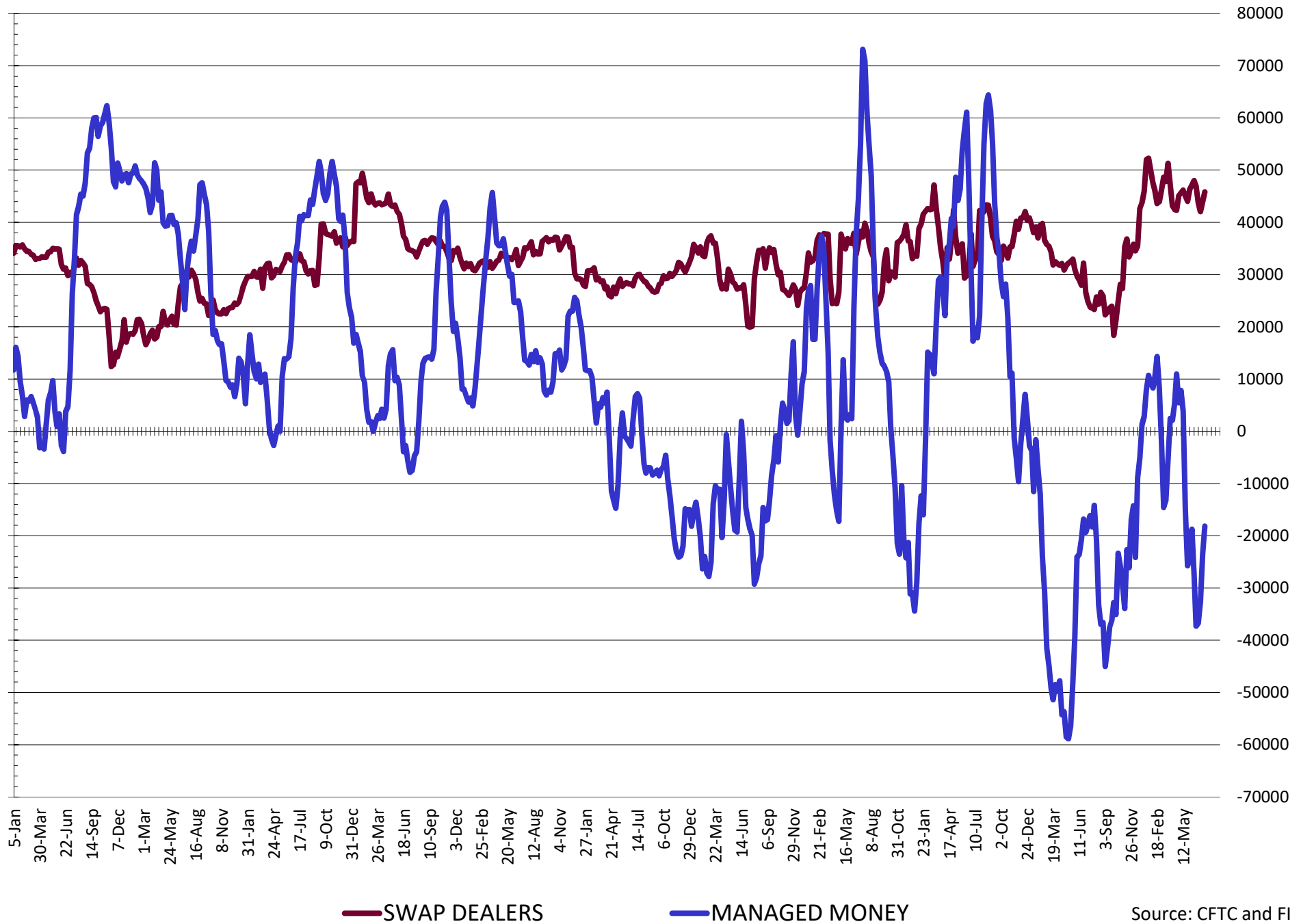


— SWAP DEALERS      — MANAGED MONEY      — Cc2 (LHS)

# NET POSITION FUTURES AND OPTIONS OF SWAP AND MANAGED FUNDS IN CHICAGO WHEAT

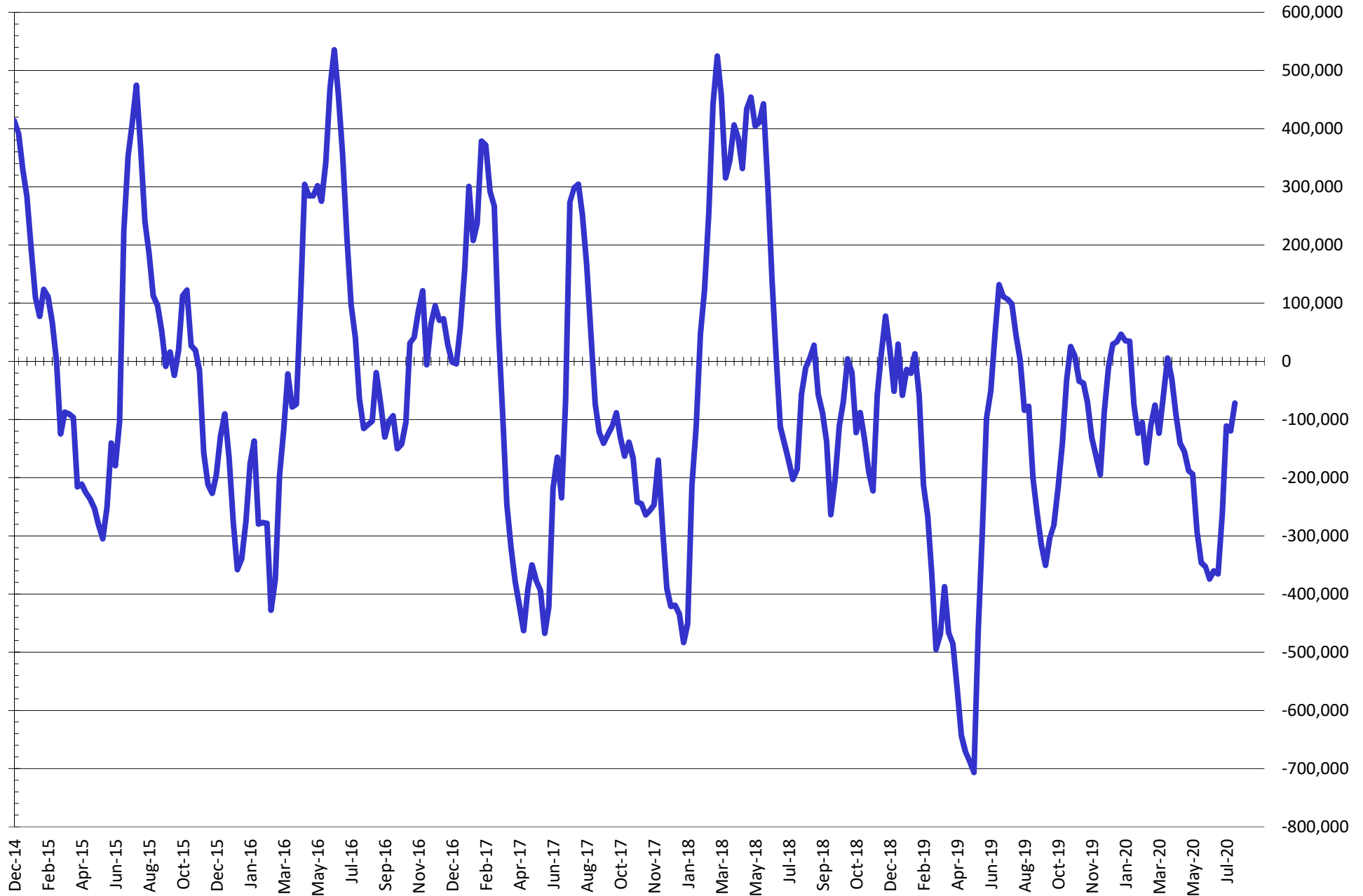


# NET POSITION FUTURES AND OPTIONS OF SWAP DEALERS AND MANAGED FUNDS IN KANSAS WHEAT



Source: CFTC and FI  
7/24/2020

# NET POSITION FUTURES AND OPTIONS OF SWAP AND MANAGED FUNDS IN COMBINED SRW, HRW, CORN, SOYBEANS, SOYMEAL AND SOYOIL



— Net Managed Money

Source: CFTC and FI  
7/24/2020

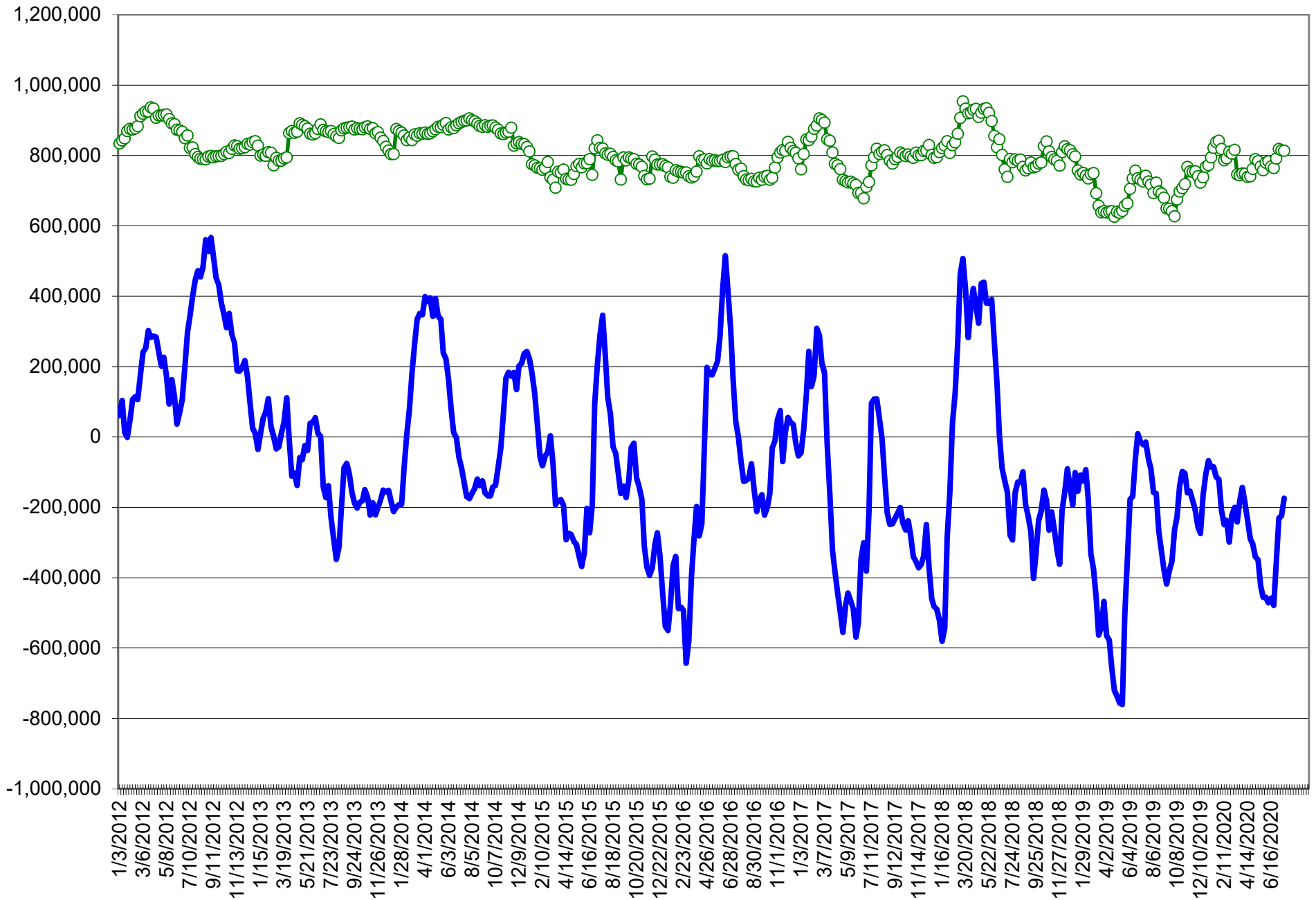
**COMMITMENT OF TRADERS**  
**FUTURES & OPTIONS NET POSITIONS (INDEX BROKEN OUT)**  
**AS OF 07/21/2020**  
(IN THOUSAND CONTRACTS)

	COMMERCIAL				(FUND) NON COMMERCIAL				(SPEC) NON-REPORTABLE			
	21-Jul	14-Jul	7-Jul	30-Jun	21-Jul	14-Jul	7-Jul	30-Jun	21-Jul	14-Jul	7-Jul	30-Jun
	WHEAT											
Chicago	(84.8)	(84.9)	(55.9)	(53.4)	(19.6)	(20.7)	(60.6)	(59.7)	(22.0)	(18.5)	(12.0)	(13.7)
Kansas City	(30.1)	(24.4)	(16.2)	(11.1)	(27.4)	(31.8)	(37.2)	(43.7)	3.6	2.9	0.6	0.9
Minneapolis	-	-	-	-	-	-	-	-	-	-	-	-
All Wheat	(114.9)	(109.4)	(72.1)	(64.5)	(47.0)	(52.5)	(97.8)	(103.3)	(18.4)	(15.6)	(11.4)	(12.8)
CORN	(100.5)	(101.5)	(94.8)	(39.2)	(165.0)	(171.6)	(190.9)	(242.9)	(43.0)	(38.7)	(22.0)	(16.9)
OATS	-	-	-	-	-	-	-	-	-	-	-	-
SOYBEANS	(205.8)	(203.7)	(244.2)	(212.7)	39.1	35.4	70.7	44.4	(3.8)	(0.2)	5.0	6.6
SOY OIL	(121.3)	(86.5)	(102.8)	(81.3)	23.0	(9.7)	4.3	(11.0)	11.1	7.1	8.3	8.4
SOY MEAL	(64.0)	(63.1)	(77.6)	(41.6)	(24.5)	(25.4)	(17.6)	(47.0)	21.6	20.9	24.2	22.3

	TOTAL OPEN INTEREST				(INDEX) COMMERCIAL INDEX TRADERS				(INDEX) % NET OF TOTAL OPEN INTEREST			
	21-Jul	14-Jul	7-Jul	30-Jun	21-Jul	14-Jul	7-Jul	30-Jun	21-Jul	14-Jul	7-Jul	30-Jun
	WHEAT											
Chicago	483,480	490,448	496,820	484,999	126.3	124.2	128.5	126.8	26.1%	25.3%	25.9%	26.1%
Kansas City	285,181	269,513	257,653	249,999	54.0	53.3	52.9	53.9	18.9%	19.8%	20.5%	21.6%
Minneapolis	-	-	-	-	-	-	-	-	-	-	-	-
All Wheat	768,661	759,961	754,473	734,998	180.3	177.5	181.3	180.7	23.5%	23.4%	24.0%	24.6%
CORN	1,905,548	1,876,486	1,872,744	1,926,269	308.5	311.8	307.7	299.0	16.2%	16.6%	16.4%	15.5%
OATS	-	-	-	-	-	-	-	-	-	-	-	-
SOYBEANS	994,119	975,293	1,001,034	949,644	170.5	168.6	168.5	161.7	17.2%	17.3%	16.8%	17.0%
SOY OIL	481,302	467,484	471,406	457,565	87.1	89.1	90.2	83.9	18.1%	19.1%	19.1%	18.3%
SOY MEAL	473,404	463,141	475,449	480,264	66.8	67.6	70.9	66.3	14.1%	14.6%	14.9%	13.8%

SOURCE: CFTC & FI

# NET POSITION FUTURES AND OPTIONS OF SPECULATORS AND INDEX FUNDS IN COMBINED SRW, HRW, CORN, SOYBEANS, SOYMEAL AND SOYOIL



Source: CFTC and FI

○ Net Index

— Net Speculator

7/24/2020

## Traditional Daily Estimate of Funds 7/21/20

	(Neg)-"Short"	Pos-"Long"			
Actual less Est.	8.8	(28.2)	2.1	(0.4)	12.5
	<b>Corn</b>	<b>Bean</b>	<b>Chi. Wheat</b>	<b>Meal</b>	<b>Oil</b>
Act.	(98.9)	121.5	18.8	6.6	45.8
22-Jul	15.0	4.0	6.0	1.0	(1.0)
23-Jul	3.0	7.0	(4.0)	4.0	(3.0)
24-Jul	(6.0)	3.0	2.0	3.0	2.0
27-Jul					
28-Jul					
<b>FI Est. of Futures Only 7/21/20</b>	<b>(86.9)</b>	<b>135.5</b>	<b>22.8</b>	<b>14.6</b>	<b>43.8</b>
<b>FI Est. Futures &amp; Options</b>	<b>(55.7)</b>	<b>107.0</b>	<b>18.9</b>	<b>0.5</b>	<b>44.4</b>
Futures only record long	498.2	260.4	86.5	167.5	160.2
	2/1/2011	6/27/2017	8/7/2018	5/1/2018	11/1/2016
Futures only record short	(235.0)	(118.3)	(130.0)	(49.5)	(69.8)
	6/9/2020	4/30/2019	4/25/2017	3/1/2016	9/18/2018
Futures and options record net long	458.5	259.8	64.8	132.1	159.2
	9/28/2010	5/1/2012	8/7/2012	5/1/2018	1/1/2016
Futures and options record net short	(270.6)	(132.0)	(143.3)	(64.1)	(77.8)
	4/26/2019	4/30/2019	4/25/2017	3/1/2016	9/18/2018

## Managed Money Daily Estimate of Funds 7/21/20

	Corn	Bean	Chi. Wheat	Meal	Oil
Latest CFTC Fut. Only	(155.7)	73.1	2.6	(28.3)	38.0
Latest CFTC F&O	(137.8)	75.8	0.5	(29.2)	36.9
FI Est. Managed Fut. Only	(144)	87	7	(20)	36
FI Est. Managed Money F&O	(126)	90	4	(21)	35

## Index Funds Latest Positions (as of last Tuesday)

Index Futures & Options	308.5	170.5	126.3	NA	87.1
Change From Previous Week	(3.3)	2.0	2.2	NA	(1.9)

Source: Reuters, CFTC & FI (FI est. are noted with latest date)



# Disclaimer

TO CLIENTS/PROSPECTS OF FUTURES INTERNATIONAL, SEE RISK DISCLOSURE BELOW:

THIS COMMUNICATION IS CONVEYED AS A SOLICITATION FOR ENTERING INTO A DERIVATIVES TRANSACTION.

Any trading recommendations and market or other information to Customer by Futures International (FI), although based upon information obtained from sources believed by FI to be reliable may not be accurate and may be changed without notice to customer. FI makes no guarantee as to the accuracy or completeness of any of the information or recommendations furnished to Customer. Customer understands that FI, its managers, employees and/or affiliates may have a position in commodity futures, options or other derivatives which may not be consistent with the recommendations furnished by FI to Customer.

The risk of trading futures and options and other derivatives involves a substantial risk of loss and is not suitable for all persons. In purchasing an option, the risk is limited to the premium paid, and all commissions and fees involved with the trade. When an option is shorted or written, the writer of the option has unlimited risk with respect to the option written. The use of options strategies such as a straddles and strangles involve multiple option positions and may substantially increase the amount of commissions and fees paid to execute the strategy. Option prices do not necessarily move in tandem with cash or futures prices. Each person must consider whether a particular trade, combination of trades or strategy is suitable for that person's financial means and objectives.

This material may include discussions of seasonal patterns, however, futures prices have already factored in the seasonal aspects of supply and demand, and seasonal patterns are no indication of future market trends. Finally, past performance is not indicative of future results.

This communication may contain links to third party websites which are not under the control of FI and FI is not responsible for their content. Products and services are offered only in jurisdictions where solicitation and sale are lawful, and in accordance with applicable laws and regulations in each such jurisdiction.