

CFTC COMMITMENT OF TRADERS REPORT

As of 7/14/2020

TRADITIONAL FUNDS net position changes

Wed to Tue, in 000 contracts

	Corn	Bean	Meal	Oil	Chi. Wheat	KC Wheat	Min Wheat
Futures Only	7.6	(22.8)	(7.6)	(10.9)	31.0	7.2	(0.3)
Futures & Options Combined	23.3	(36.6)	(9.6)	(14.3)	39.1	6.3	(0.4)

TRADITIONAL COMMERCIAL net position changes

	Corn	Bean	Meal	Oil	Chi. Wheat	KC Wheat	Min Wheat
Futures Only	(6.7)	25.1	10.8	12.4	(25.6)	(9.6)	(0.5)
Futures & Options Combined	(6.6)	41.9	13.0	15.5	(32.6)	(8.7)	(0.5)

MANAGED MONEY net position changes

	Corn	Bean	Meal	Oil	Chi. Wheat	KC Wheat	Min Wheat
Futures Only	1.6	(26.9)	(7.9)	(8.7)	25.9	8.7	(0.4)
Futures & Options Combined	8.1	(33.3)	(8.5)	(9.2)	25.2	9.1	(0.4)

SWAP DEALERS net position changes

	Corn	Bean	Meal	Oil	Chi. Wheat	KC Wheat	Min Wheat
Futures Only	1.7	2.1	(1.9)	(0.4)	(1.7)	1.8	0.2
Futures & Options Combined	8.5	5.4	(1.0)	(0.4)	(6.6)	1.9	0.2

PRODUCERS/END USERS net position changes

	Corn	Bean	Meal	Oil	Chi. Wheat	KC Wheat	Min Wheat
Futures Only	(8.4)	23.0	12.7	12.8	(23.9)	(11.4)	(0.7)
Futures & Options Combined	(15.1)	36.4	14.0	15.9	(26.0)	(10.5)	(0.7)

INDEX net position changes

	Corn	Bean	Meal	Oil	Chi. Wheat	KC Wheat	Min Wheat
Futures & Options Combined	4.2	0.1	(3.3)	(1.1)	(4.3)	0.5	NA

SUPPLEMENTAL NON-COMMERCIAL net position changes

	Corn	Bean	Meal	Oil	Chi. Wheat	KC Wheat	Min Wheat
Futures & Options Combined	19.3	(35.4)	(7.9)	(14.0)	39.8	5.4	NA

OPEN INTEREST net position changes

Wed to Tue, in 000 contracts

	Corn	Bean	Meal	Oil	Chi. Wheat	KC Wheat	Min Wheat
Futures Only	8.1	(21.7)	(12.5)	(5.7)	(20.7)	8.3	(0.2)
Futures & Options Combined	3.7	(25.7)	(12.3)	(3.9)	(6.4)	11.9	(0.1)

Source: CFTC and FI

Wed to Tue, in 000 contracts

7/18/2020

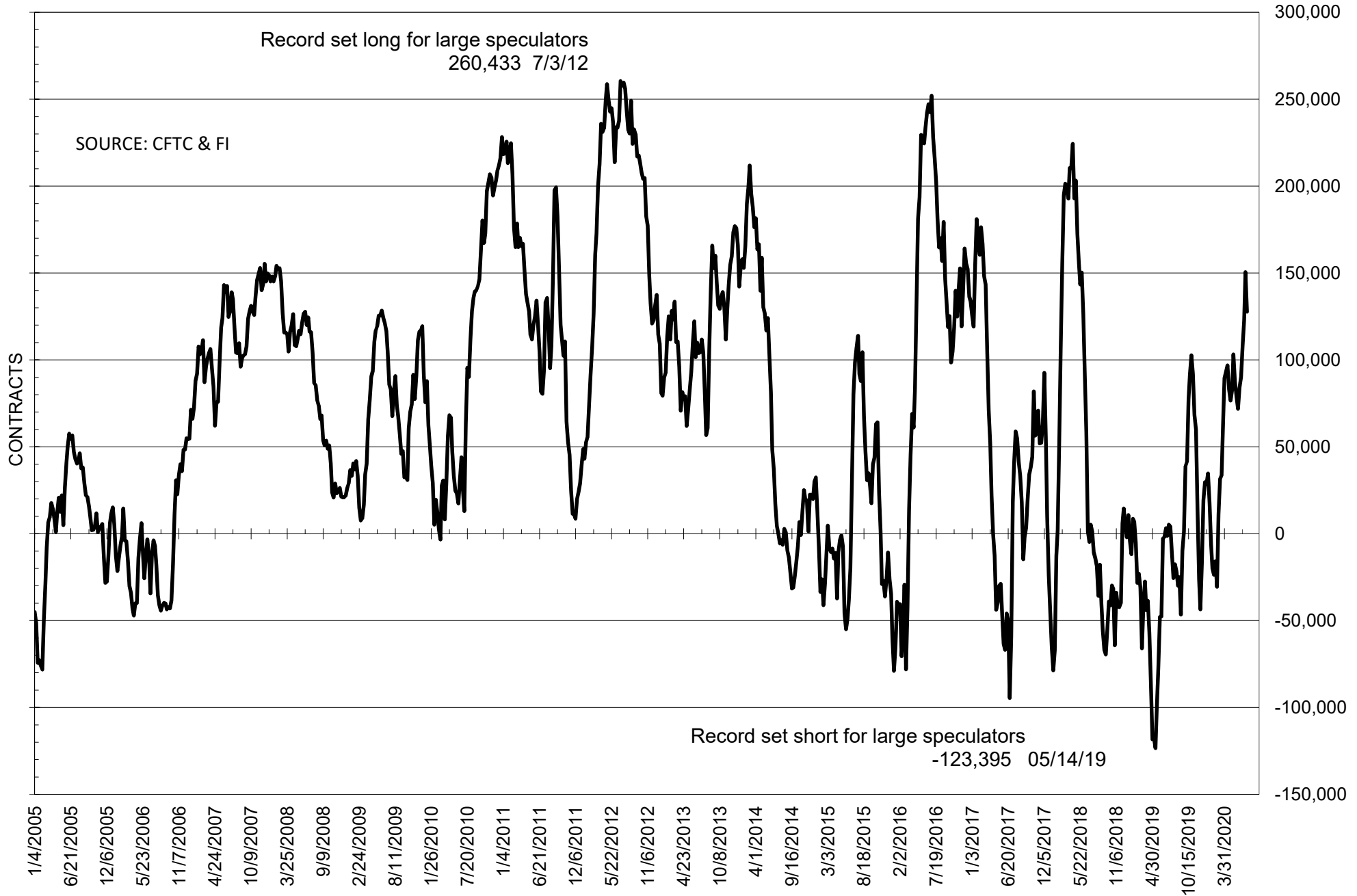
**COMMITMENT OF TRADERS
FUTURES ONLY NET POSITIONS
AS OF 07/14/2020
(IN THOUSAND CONTRACTS)**

	COMMERCIAL				(FUND) NON COMMERCIAL				(SPEC) NON-REPORTABLE			
	14-Jul	7-Jul	30-Jun	23-Jun	14-Jul	7-Jul	30-Jun	23-Jun	14-Jul	7-Jul	30-Jun	23-Jun
	WHEAT											
Chicago	0.6	26.2	28.4	28.1	16.7	-14.3	-14.6	-14.6	-17.4	-12.0	-13.7	-13.4
Kansas City	19.4	28.9	34.6	36.1	-21.8	-29.0	-35.3	-34.8	2.4	0.1	0.7	-1.3
Minneapolis	12.9	13.4	12.7	7.2	-15.4	-15.0	-14.8	-10.2	2.5	1.6	2.1	3.0
All Wheat	32.9	68.6	75.7	71.4	-20.5	-58.3	-64.8	-59.7	-12.4	-10.3	-10.9	-11.7
CORN	113.6	120.3	166.4	193.7	-99.7	-107.2	-157.4	-222.0	-13.9	-13.1	-8.9	28.3
OATS	-2.6	-2.8	-2.8	-2.4	2.2	2.4	2.3	2.0	0.4	0.4	0.5	0.4
SOYBEANS	-127.3	-152.4	-127.3	-117.2	127.7	150.5	122.9	108.0	-0.4	1.9	4.4	9.2
SOY OIL	-22.6	-35.0	-18.0	-13.0	16.3	27.2	10.2	5.5	6.4	7.9	7.8	7.4
SOY MEAL	-24.8	-35.7	-5.7	-18.4	6.0	13.6	-14.8	-3.2	18.9	22.1	20.5	21.6

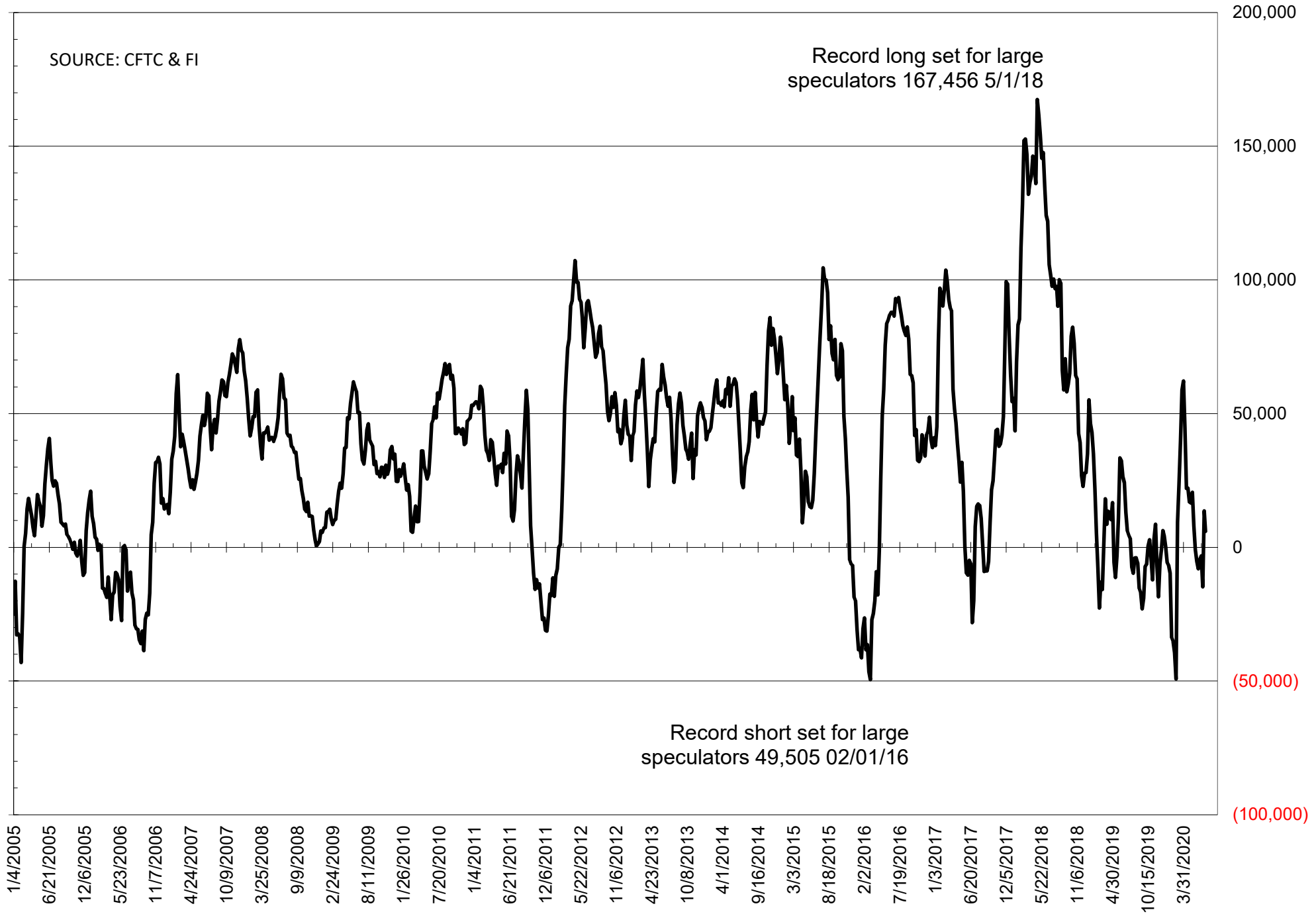
	TOTAL OPEN INTEREST				NEARBY FUTURES PRICE					14-Jul-20 LAST REPORTED % HELD BY TRADERS			
	14-Jul	7-Jul	30-Jun	23-Jun	Q/U Latest	Q/U 14-Jul	Q/U 7-Jul	Q/U 30-Jun	N 23-Jun	LARGE FUND		SMALL	
										LONG	SHORT	LONG	SHORT
WHEAT													
Chicago	389500	410198	403108	432871	541.25	527.50	495.75	492.25	486.00	0%	26%	0%	10%
Kansas City	248761	240418	235012	242093	460.00	442.25	441.50	440.50	435.00	0%	32%	0%	7%
Minneapolis	62788	62977	61738	60243	527.00	518.75	513.00	520.25	514.75	0%	39%	0%	13%
CORN	1497743	1489681	1559526	1609523	340.25	326.00	343.25	340.75	325.00	0%	24%	0%	12%
OATS	4324	4439	4292	4479	271.50	271.00	281.50	290.25	304.25	0%	0%	0%	19%
SOYBEANS	818767	840495	811476	862796	892.75	878.00	896.00	878.50	875.00	24%	9%	7%	7%
SOY OIL	438301	444042	430592	460250	30.13	28.46	28.86	28.05	28.17	0%	13%	0%	7%
SOY MEAL	420582	433050	441205	453600	289.30	285.20	295.10	289.30	286.30	0%	17%	0%	6%

SOURCE: CFTC & FI

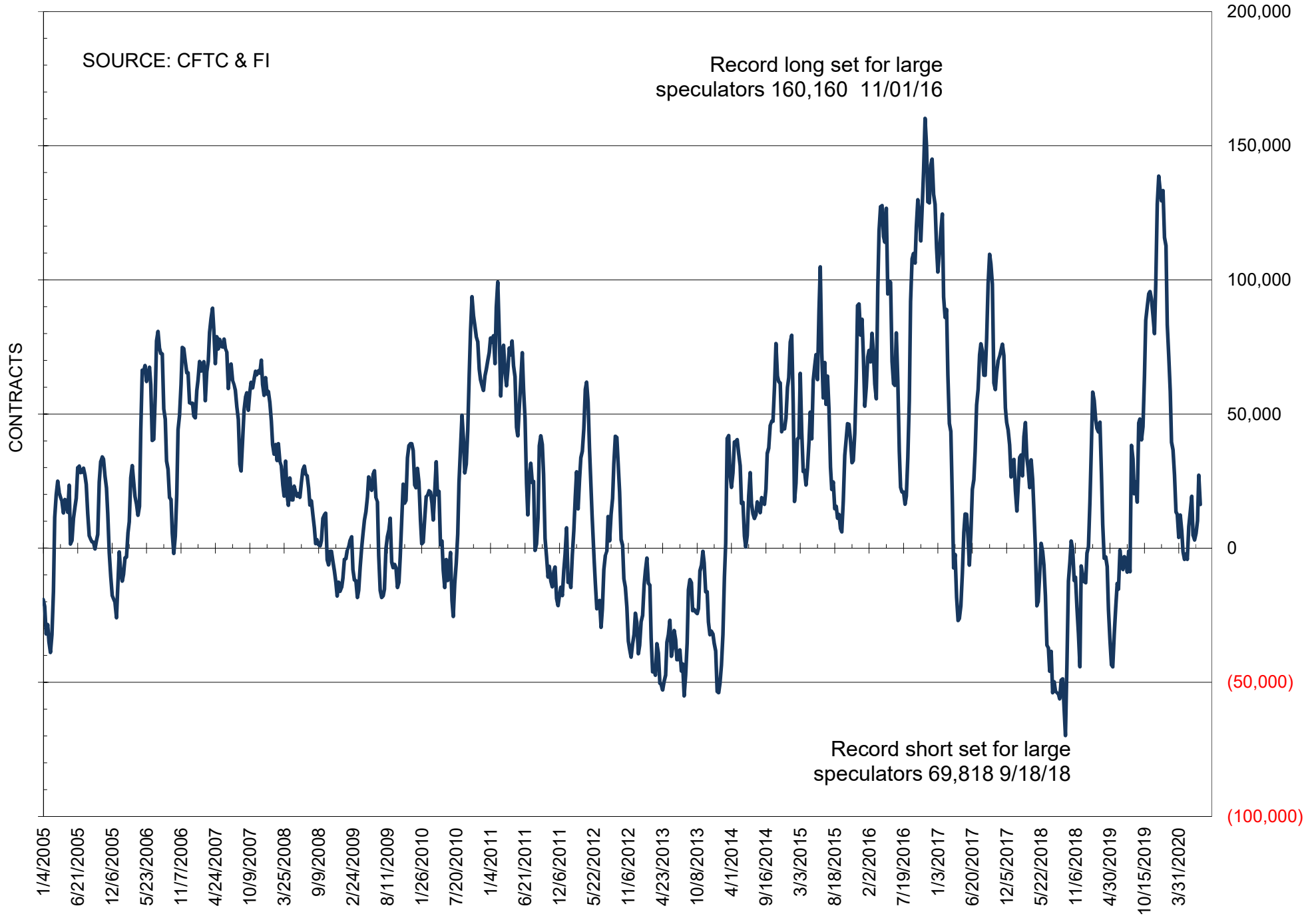
NET POSITION OF FUTURES ONLY LARGE SPECS IN SOYBEANS



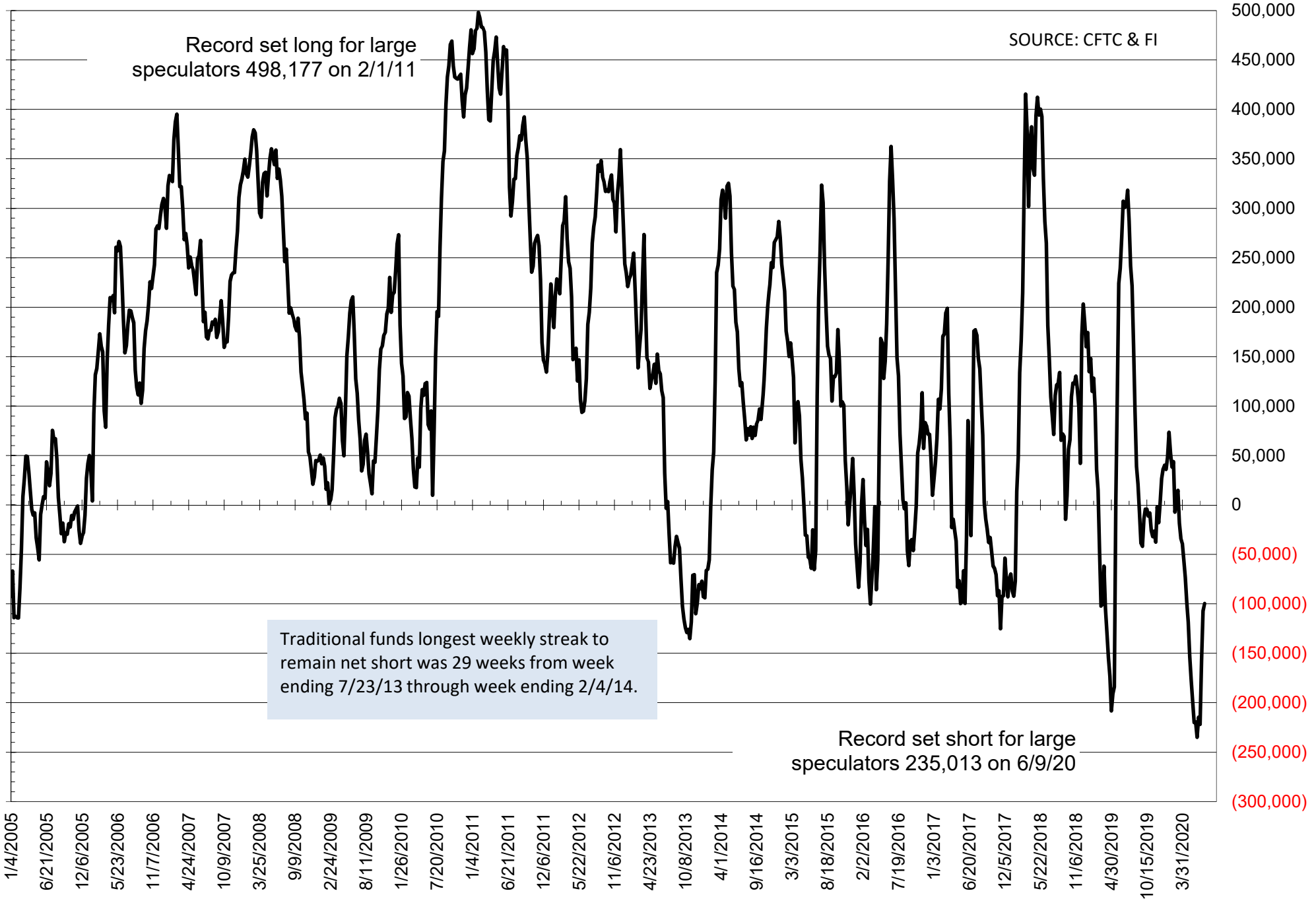
NET POSITION OF FUTURES ONLY LARGE SPECS IN SOYMEAL



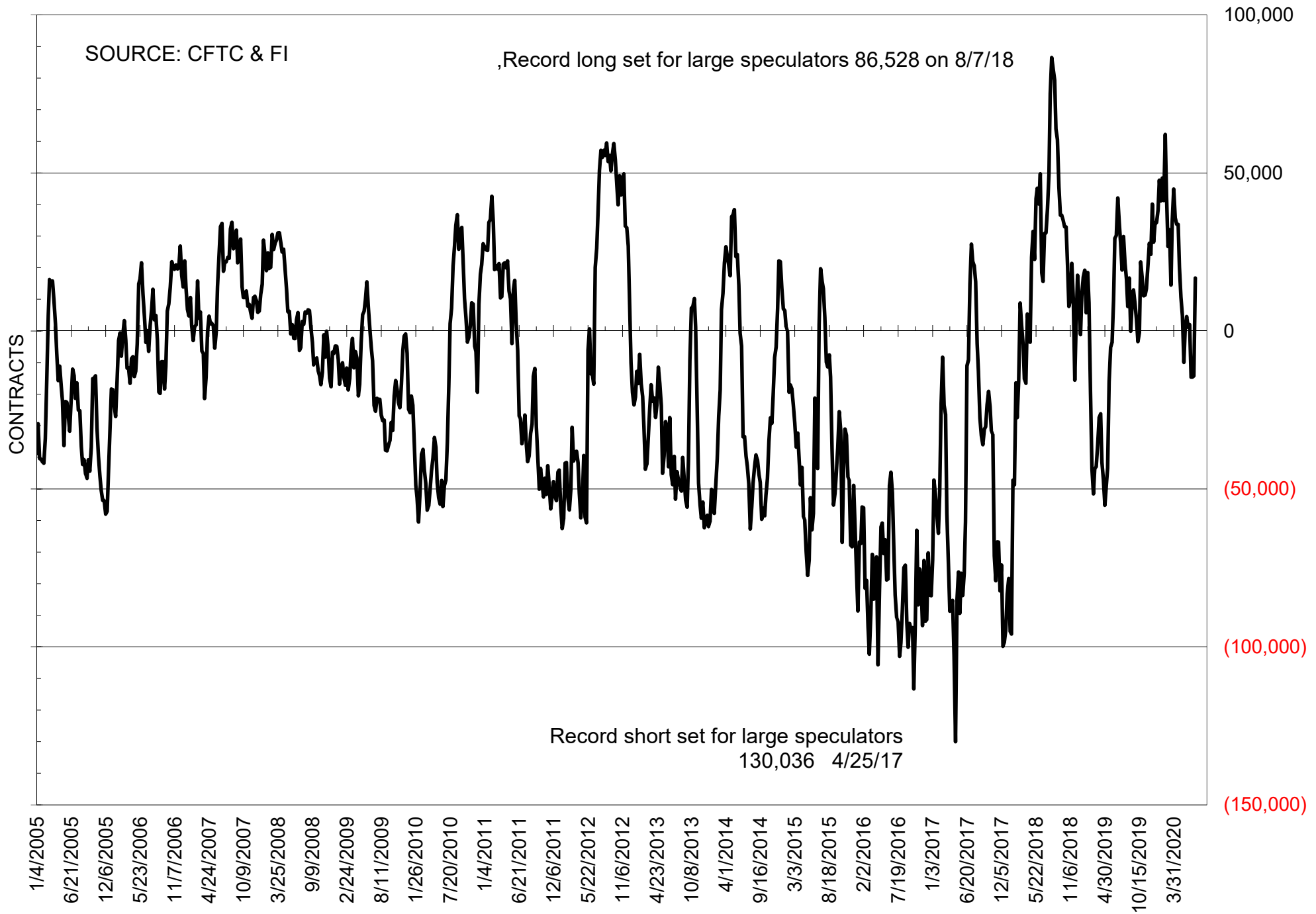
NET POSITION OF FUTURES ONLY LARGE SPECS IN SOYOIL



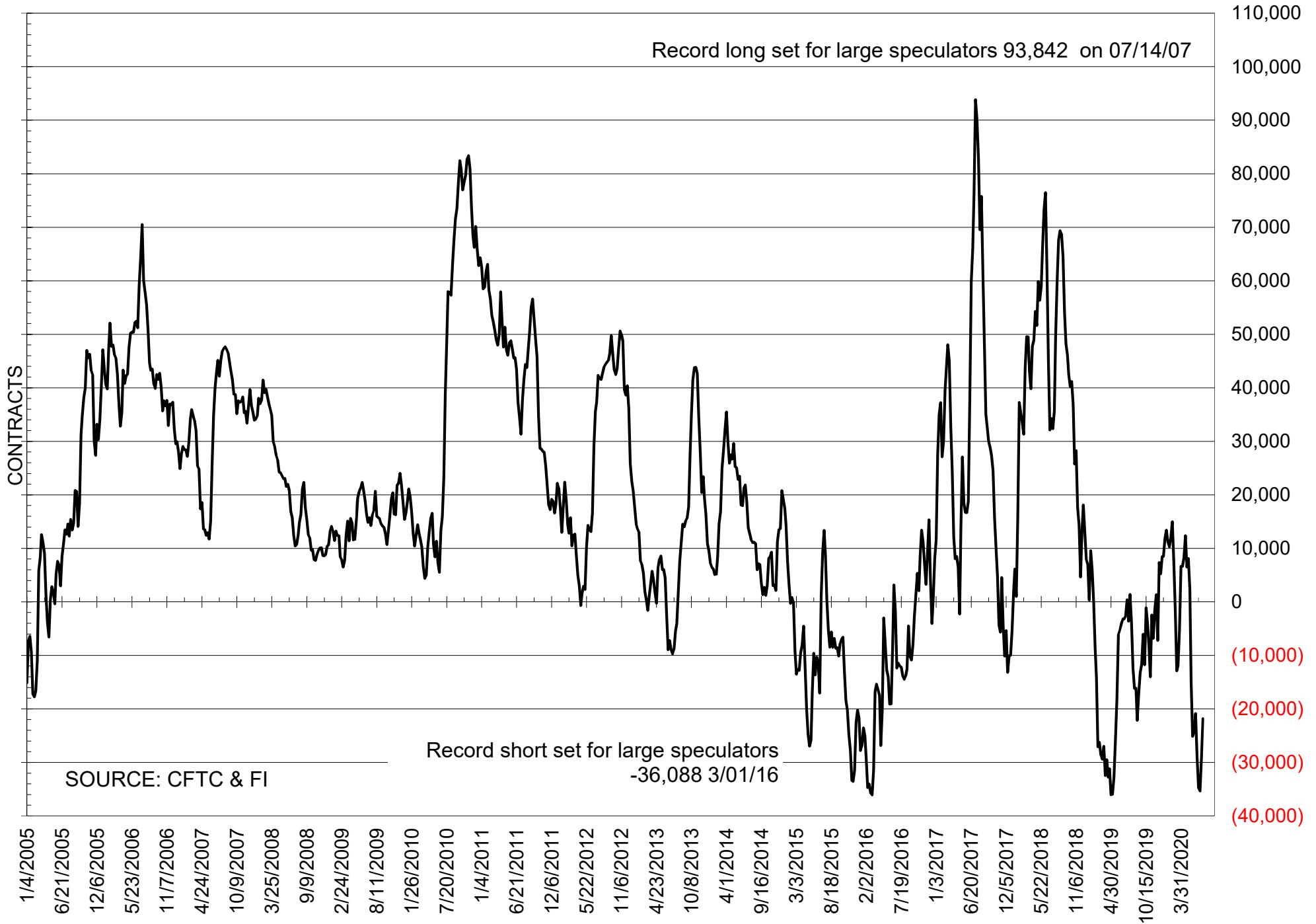
NET POSITION OF LARGE SPECULATORS IN CORN



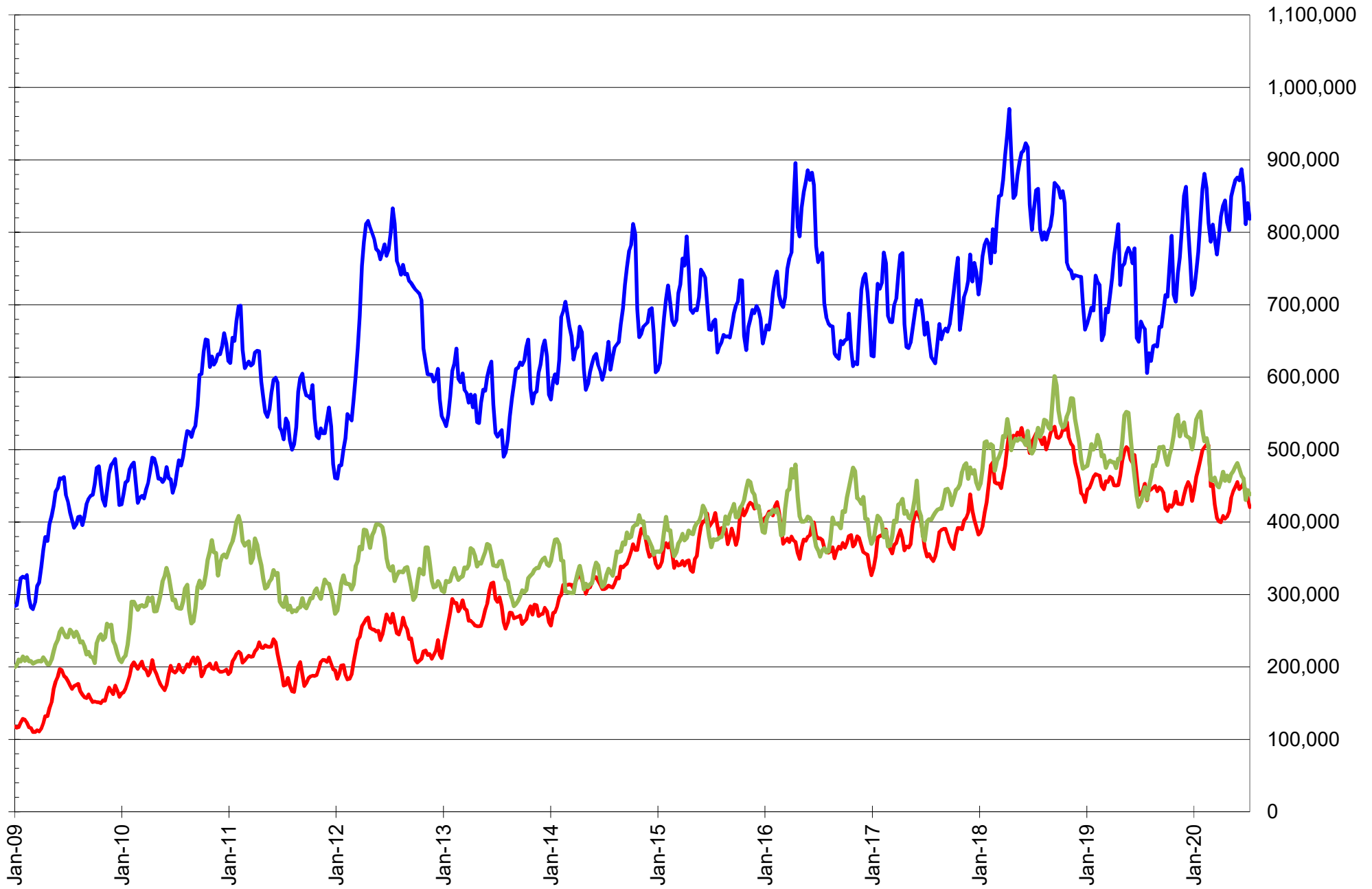
NET POSITION OF FUTURES ONLY LARGE SPECS IN CHICAGO WHEAT



NET POSITION OF LARGE SPECULATORS IN KANSAS CITY WHEAT



TOTAL OPEN INTEREST IN SOYBEANS, MEAL AND OIL, FUTURES ONLY



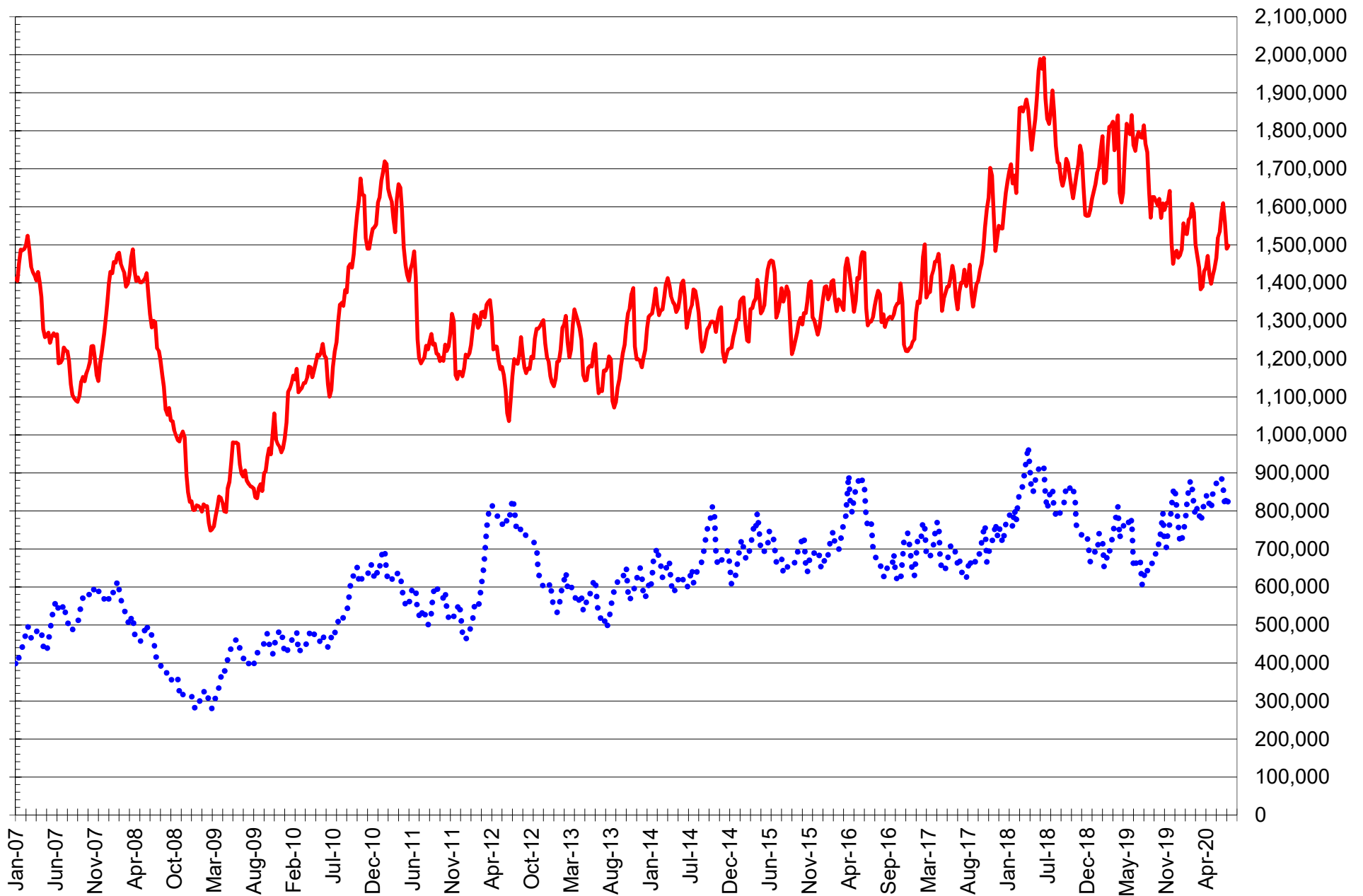
SOURCE: CFTC & FI

— SOYBEANS

— SOYBEAN MEAL

— SOYBEAN OIL

TOTAL OPEN INTEREST IN CORN AND SOYBEANS, FUTURES ONLY



SOURCE: CFTC & FI

— CORN

..... SOYBEANS

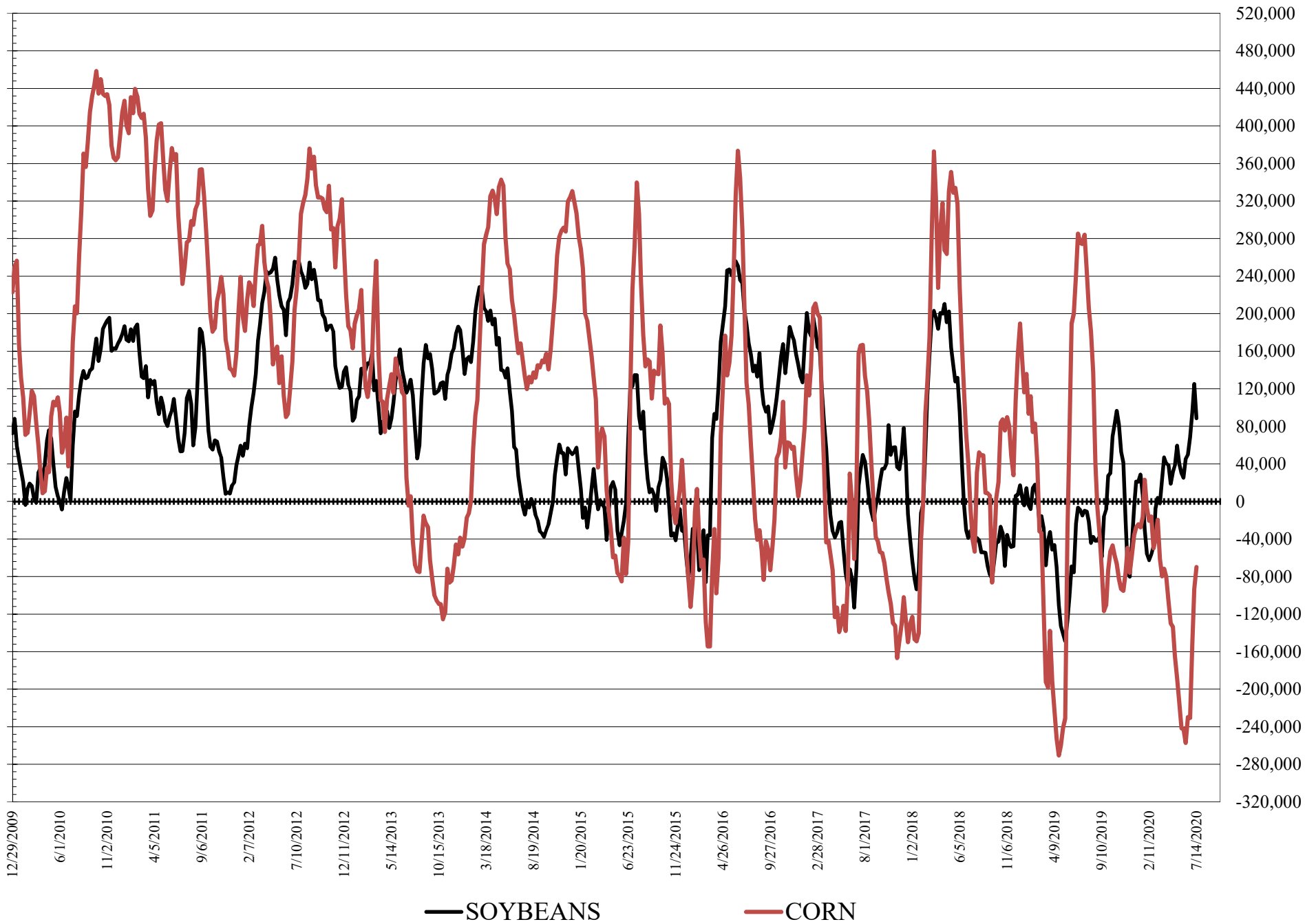
**COMMITMENT OF TRADERS
FUTURES & OPTIONS NET POSITIONS
AS OF 07/14/2020
(IN THOUSAND CONTRACTS)**

	COMMERCIAL				(FUND) NON COMMERCIAL				(SPEC) NON-REPORTABLE			
	14-Jul	7-Jul	30-Jun	23-Jun	14-Jul	7-Jul	30-Jun	23-Jun	14-Jul	7-Jul	30-Jun	23-Jun
WHEAT												
Chicago	7.4	40.0	43.5	58.5	11.1	-28.0	-29.8	-44.9	-18.5	-12.0	-13.7	-13.6
Kansas City	23.0	31.6	37.4	42.7	-25.9	-32.2	-38.3	-41.3	2.9	0.6	0.9	-1.3
Minneapolis	13.4	13.9	13.0	7.7	-16.0	-15.6	-15.3	-11.0	2.6	1.7	2.2	3.2
All Wheat	43.7	85.5	94.0	109.0	-30.8	-75.8	-83.4	-97.2	-12.9	-9.7	-10.6	-11.7
CORN	108.6	115.2	169.1	209.4	-69.9	-93.2	-152.2	-230.8	-38.7	-22.0	-16.9	21.4
OATS	-2.5	-2.7	-2.7	-2.4	2.1	2.3	2.2	2.0	0.4	0.4	0.5	0.4
SOYBEANS	-88.4	-130.2	-101.7	-80.0	88.6	125.2	95.0	68.3	-0.2	5.0	6.6	11.7
SOY OIL	-22.7	-38.2	-20.7	-16.2	15.6	29.9	12.3	8.4	7.1	8.3	8.4	7.8
SOY MEAL	-14.1	-27.1	4.9	-3.6	-6.7	2.9	-27.2	-20.7	20.9	24.2	22.3	24.3

	TOTAL OPEN INTEREST				COMMERCIALS		% HELD BY TRADERS LARGE (FUNDS)		SMALL (NON-REP)	
	14-Jul	7-Jul	30-Jun	23-Jun	LONG	SHORT	LONG	SHORT	LONG	SHORT
WHEAT										
Chicago	490,448	496,820	484,999	570,036						
Kansas City	269,513	257,653	249,999	265,741	36%	34%	23%	21%	5%	9%
Minneapolis	64,311	64,417	63,073	61,943	48%	40%	20%	30%	8%	7%
					66%	45%	13%	38%	17%	13%
CORN	1,876,486	1,872,744	1,926,269	2,034,732	49%	43%	14%	17%	11%	13%
OATS	4,645	4,764	4,623	4,852						
SOYBEANS	975,293	1,001,034	949,644	1,045,355	47%	56%	16%	7%	7%	7%
SOY OIL	467,484	471,406	457,565	506,222	53%	58%	15%	12%	8%	6%
SOY MEAL	463,141	475,449	480,264	502,157	56%	59%	14%	16%	10%	6%

SOURCE: CFTC & FI

NET POSITION FUTURES AND OPTIONS OF LARGE SPECULATORS IN SOYBEANS AND CORN



**DISAGGREGATED COMMITMENT OF TRADERS
FUTURES ONLY NET POSITIONS
AS OF 07/14/2020
(IN THOUSAND CONTRACTS)**

	PRODUCER / MERCHANT / PROCESSOR / USER				(INDEX/ETF) SWAP DEALERS				(CTA/CPO/OTHER UNREGISTERED) MANAGED MONEY					
	14-Jul	7-Jul	30-Jun	23-Jun	14-Jul	7-Jul	30-Jun	23-Jun	14-Jul	7-Jul	30-Jun	23-Jun		
	WHEAT													
Chicago	(86.4)	(62.5)	(60.0)	(59.6)	87.0	88.7	88.4	87.6	(6.5)	(32.4)	(37.6)	(45.2)		
Kansas City	(24.4)	(13.1)	(9.1)	(10.0)	43.8	42.0	43.7	46.1	(25.3)	(34.0)	(36.7)	(37.5)		
Minneapolis	10.7	11.4	10.8	5.4	2.2	2.0	2.0	1.9	(18.5)	(18.1)	(17.7)	(13.9)		
All Wheat	(100.1)	(64.1)	(58.3)	(64.2)	133.0	132.7	134.0	135.6	(50.3)	(84.5)	(92.1)	(96.6)		
CORN	(67.6)	(59.2)	(10.5)	35.1	181.2	179.5	176.9	158.6	(148.8)	(150.3)	(211.7)	(285.9)		
OATS	(2.7)	(2.9)	(2.8)	(2.5)	0.1	0.1	0.1	0.1	1.3	1.6	1.5	1.3		
SOYBEANS	(248.7)	(271.7)	(242.3)	(228.4)	121.4	119.3	115.1	111.2	63.7	90.6	63.4	43.0		
SOY OIL	(110.8)	(123.7)	(101.3)	(98.4)	88.2	88.6	83.4	85.4	10.4	19.1	0.8	(0.5)		
SOY MEAL	(91.4)	(104.1)	(71.3)	(85.7)	66.6	68.5	65.6	67.2	(29.7)	(21.8)	(51.9)	(45.2)		
										Managed % of OI				
										Chicago W	-2%	-8%	-9%	-10%
										Corn	-10%	-10%	-14%	-18%
	TOTAL OPEN INTEREST				OTHER REPORTABLE				NON REPORTABLE					
	14-Jul	7-Jul	30-Jun	23-Jun	14-Jul	7-Jul	30-Jun	23-Jun	14-Jul	7-Jul	30-Jun	23-Jun		
WHEAT														
Chicago	389,500	410,198	403,108	432,871	23.2	18.1	23.0	30.5	(17.4)	(12.0)	(13.7)	(13.4)		
Kansas City	248,761	240,418	235,012	242,093	3.5	5.0	1.4	2.7	2.4	0.1	0.7	(1.3)		
Minneapolis	62,788	62,977	61,738	60,243	3.1	3.1	2.9	3.7	2.5	1.6	2.1	3.0		
All Wheat	701,049	713,593	699,858	735,207	29.8	26.2	27.3	37.0	(12.4)	(10.3)	(10.9)	(11.7)		
CORN	1,497,743	1,489,681	1,559,526	1,609,523	49.1	43.1	54.2	64.0	(13.9)	(13.1)	(8.9)	28.3		
OATS	4,324	4,439	4,292	4,479	0.9	0.8	0.8	0.7	0.4	0.4	0.5	0.4		
SOYBEANS	818,767	840,495	811,476	862,796	64.0	59.9	59.5	65.0	(0.4)	1.9	4.4	9.2		
SOY OIL	438,301	444,042	430,592	460,250	5.9	8.1	9.4	6.1	6.4	7.9	7.8	7.4		
SOY MEAL	420,582	433,050	441,205	453,600	35.7	35.4	37.1	42.0	18.9	22.1	20.5	21.6		

SOURCE: CFTC & FI

7/18/2020

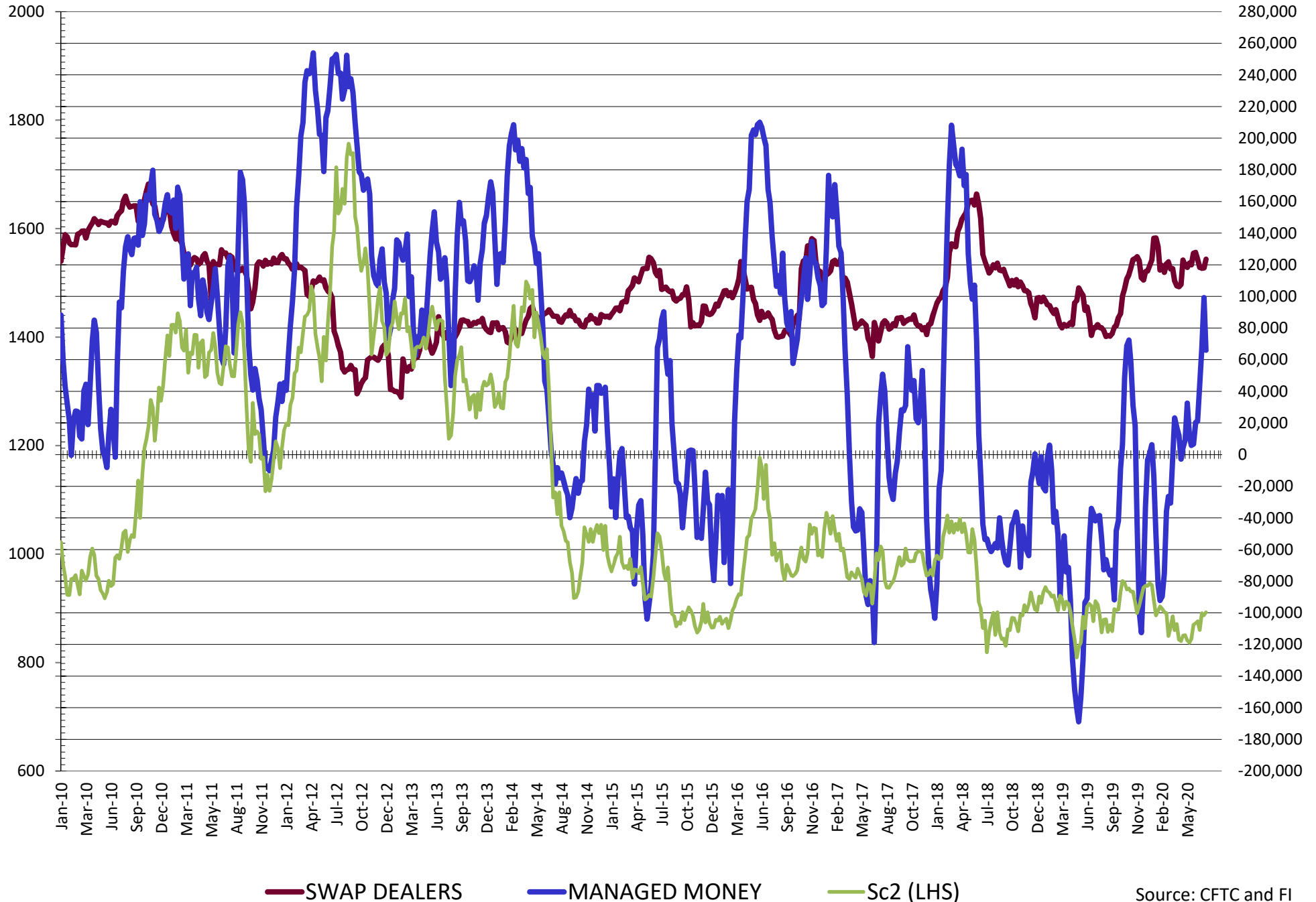
**DISAGGREGATED COMMITMENT OF TRADERS
FUTURES & OPTIONS NET POSITIONS
AS OF 07/14/2020
(IN THOUSAND CONTRACTS)**

	PRODUCER / MERCHANT / PROCESSOR / USER				(INDEX/ETF) SWAP DEALERS				(CTA/CPO/OTHER UNREGISTERED) MANAGED MONEY			
	14-Jul	7-Jul	30-Jun	23-Jun	14-Jul	7-Jul	30-Jun	23-Jun	14-Jul	7-Jul	30-Jun	23-Jun
	WHEAT											
Chicago	(85.7)	(59.7)	(56.6)	(48.0)	93.1	99.7	100.1	106.5	(8.3)	(33.5)	(38.8)	(48.2)
Kansas City	(21.0)	(10.4)	(6.3)	(4.3)	43.9	42.1	43.7	47.0	(23.6)	(32.7)	(36.7)	(37.3)
Minneapolis	11.1	11.8	10.9	5.8	2.3	2.1	2.1	1.9	(18.5)	(18.1)	(17.7)	(13.9)
All Wheat	(95.6)	(58.3)	(52.0)	(46.4)	139.3	143.8	145.9	155.4	(50.4)	(84.3)	(93.3)	(99.4)
CORN	(95.7)	(80.6)	(26.1)	23.5	204.3	195.8	195.1	185.8	(133.6)	(141.7)	(201.6)	(277.5)
OATS	(2.6)	(2.8)	(2.8)	(2.5)	0.1	0.1	0.1	0.1	1.3	1.6	1.5	1.3
SOYBEANS	(211.9)	(248.3)	(219.4)	(198.3)	123.5	118.1	117.7	118.3	66.0	99.2	67.8	44.3
SOY OIL	(110.8)	(126.7)	(104.0)	(101.6)	88.1	88.5	83.2	85.4	10.2	19.4	0.8	(0.7)
SOY MEAL	(87.2)	(101.2)	(67.1)	(77.7)	73.1	74.1	72.0	74.1	(30.5)	(21.9)	(52.5)	(46.0)

	TOTAL OPEN INTEREST				OTHER REPORTABLE				NON REPORTABLE			
	14-Jul	7-Jul	30-Jun	23-Jun	14-Jul	7-Jul	30-Jun	23-Jun	14-Jul	7-Jul	30-Jun	23-Jun
	WHEAT											
Chicago	490,448	496,820	484,999	570,036	19.5	5.5	9.0	3.3	(18.5)	(12.0)	(13.7)	(13.6)
Kansas City	269,513	257,653	249,999	265,741	(2.3)	0.5	(1.6)	(4.0)	2.9	0.6	0.9	(1.3)
Minneapolis	64,311	64,417	63,073	61,943	2.5	2.5	2.5	3.0	2.6	1.7	2.2	3.2
All Wheat	824,272	818,890	798,071	897,720	19.7	8.5	9.9	2.2	(12.9)	(9.7)	(10.6)	(11.7)
CORN	1,876,486	1,872,744	1,926,269	2,034,732	63.7	48.5	49.5	46.7	(38.7)	(22.0)	(22.0)	(22.0)
OATS	4,645	4,764	4,623	4,852	0.8	0.7	0.7	0.7	0.4	0.4	0.5	0.4
SOYBEANS	975,293	1,001,034	949,644	1,045,355	22.6	26.0	27.2	24.0	(0.2)	5.0	6.6	11.7
SOY OIL	467,484	471,406	457,565	506,222	5.4	10.5	11.5	9.1	7.1	8.3	8.4	7.8
SOY MEAL	463,141	475,449	480,264	502,157	23.7	24.8	25.3	25.3	20.9	24.2	22.3	24.3

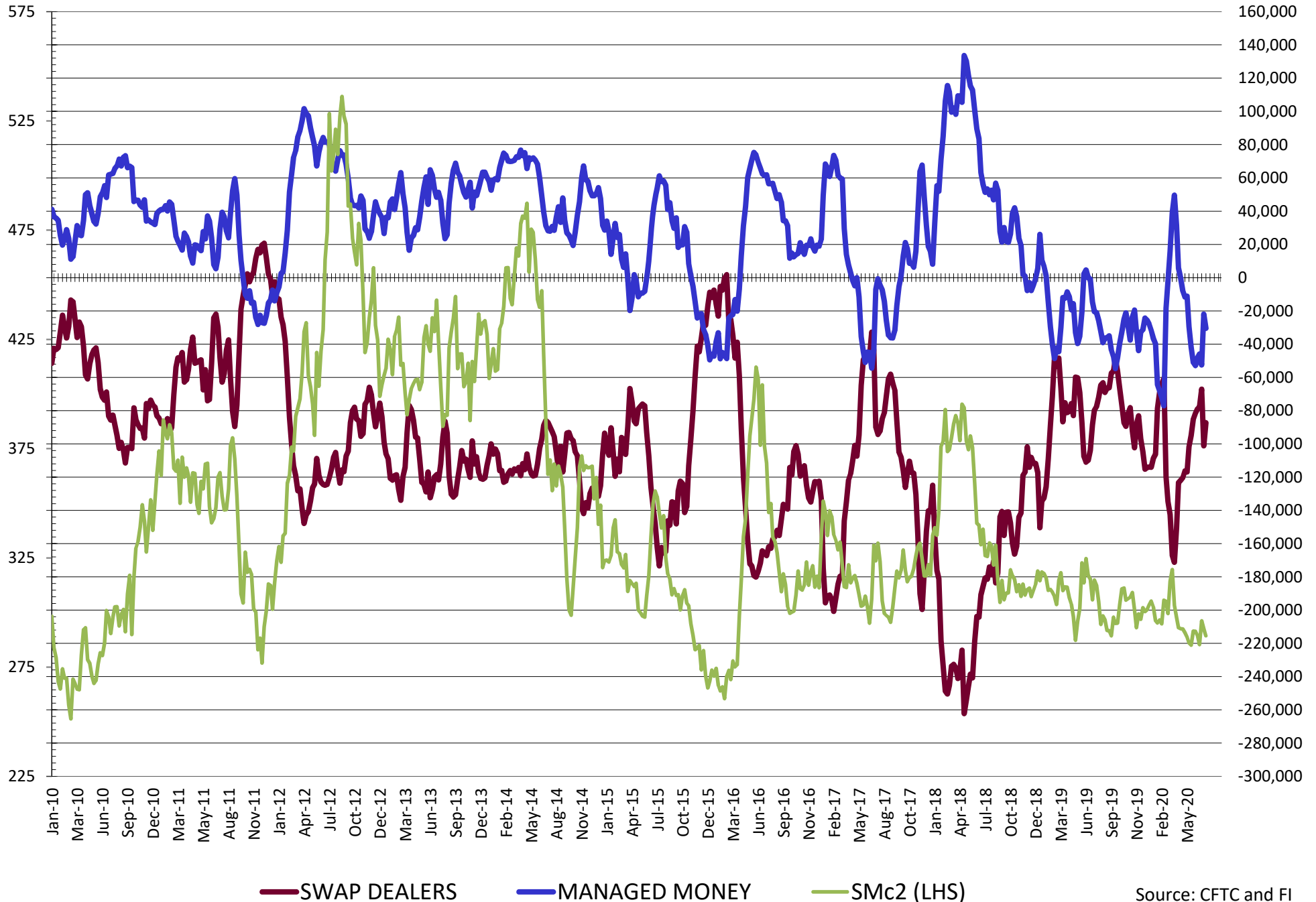
SOURCE: CFTC & FI

NET POSITION FUTURES AND OPTIONS OF SWAP AND MANAGED FUNDS IN SOYBEANS

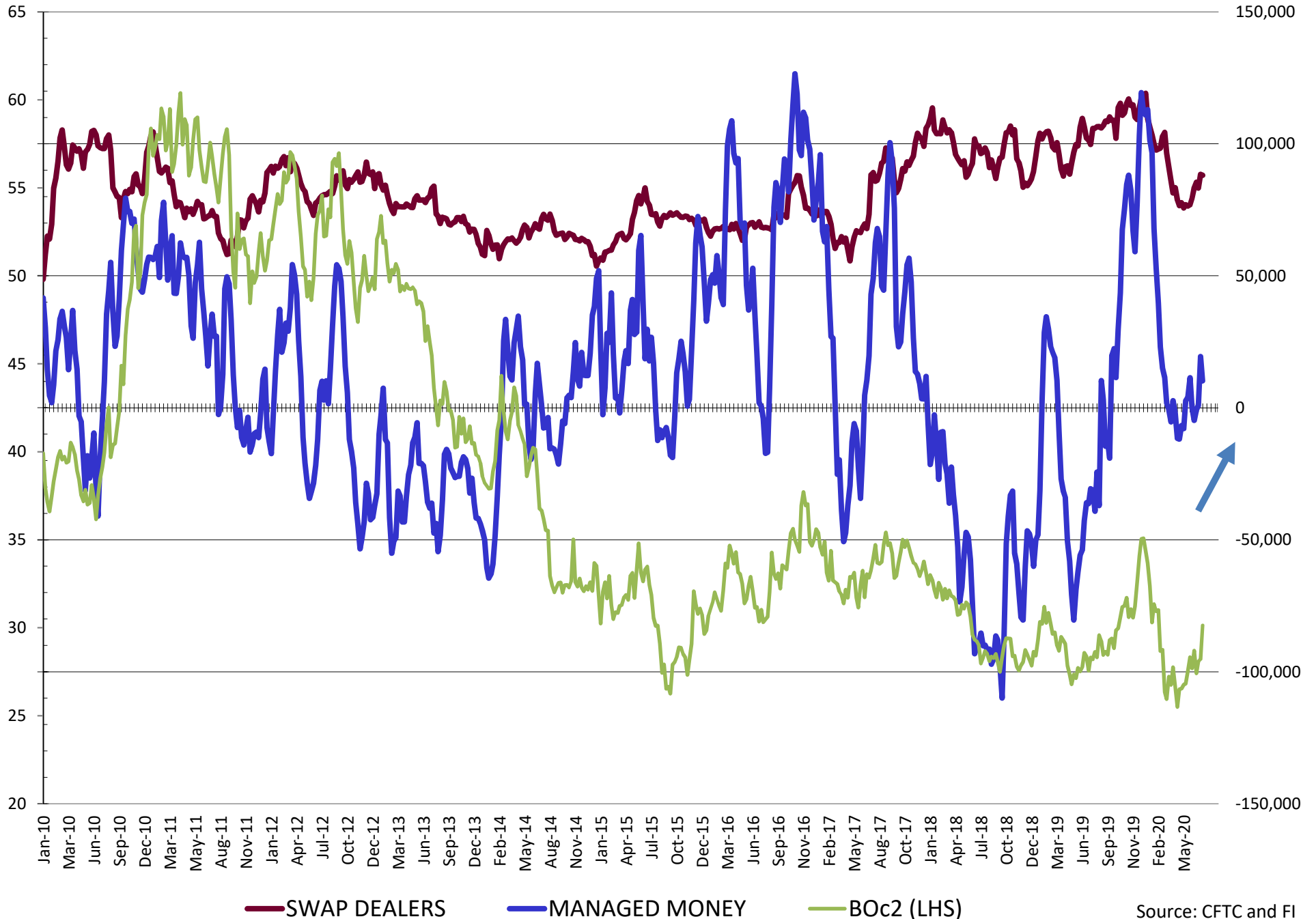


Source: CFTC and FI
7/18/2020

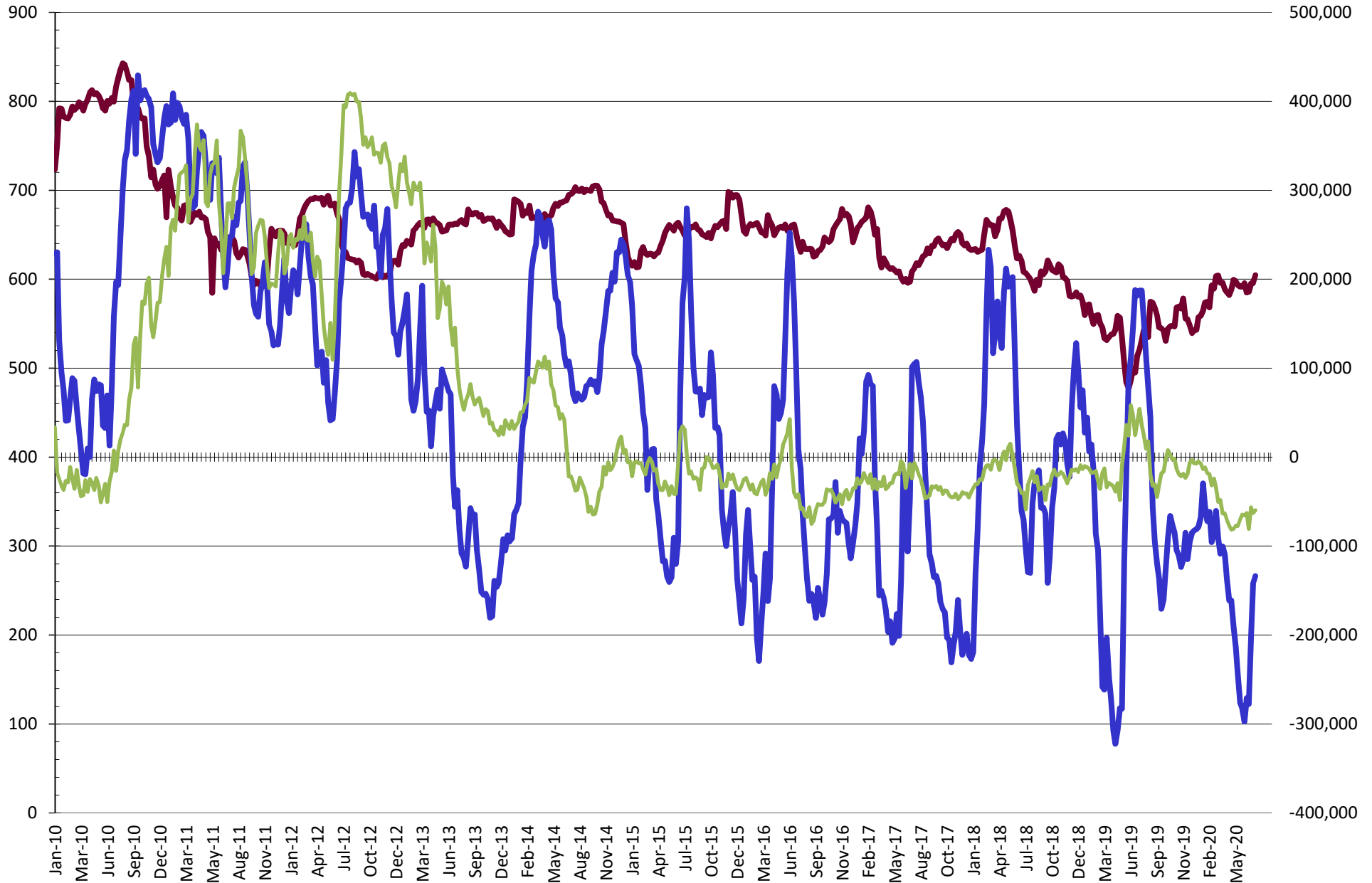
NET POSITION FUTURES AND OPTIONS OF SWAP AND MANAGED FUNDS IN SOYBEAN MEAL



NET POSITION FUTURES AND OPTIONS OF SWAP AND MANAGED FUNDS IN SOYBEAN OIL



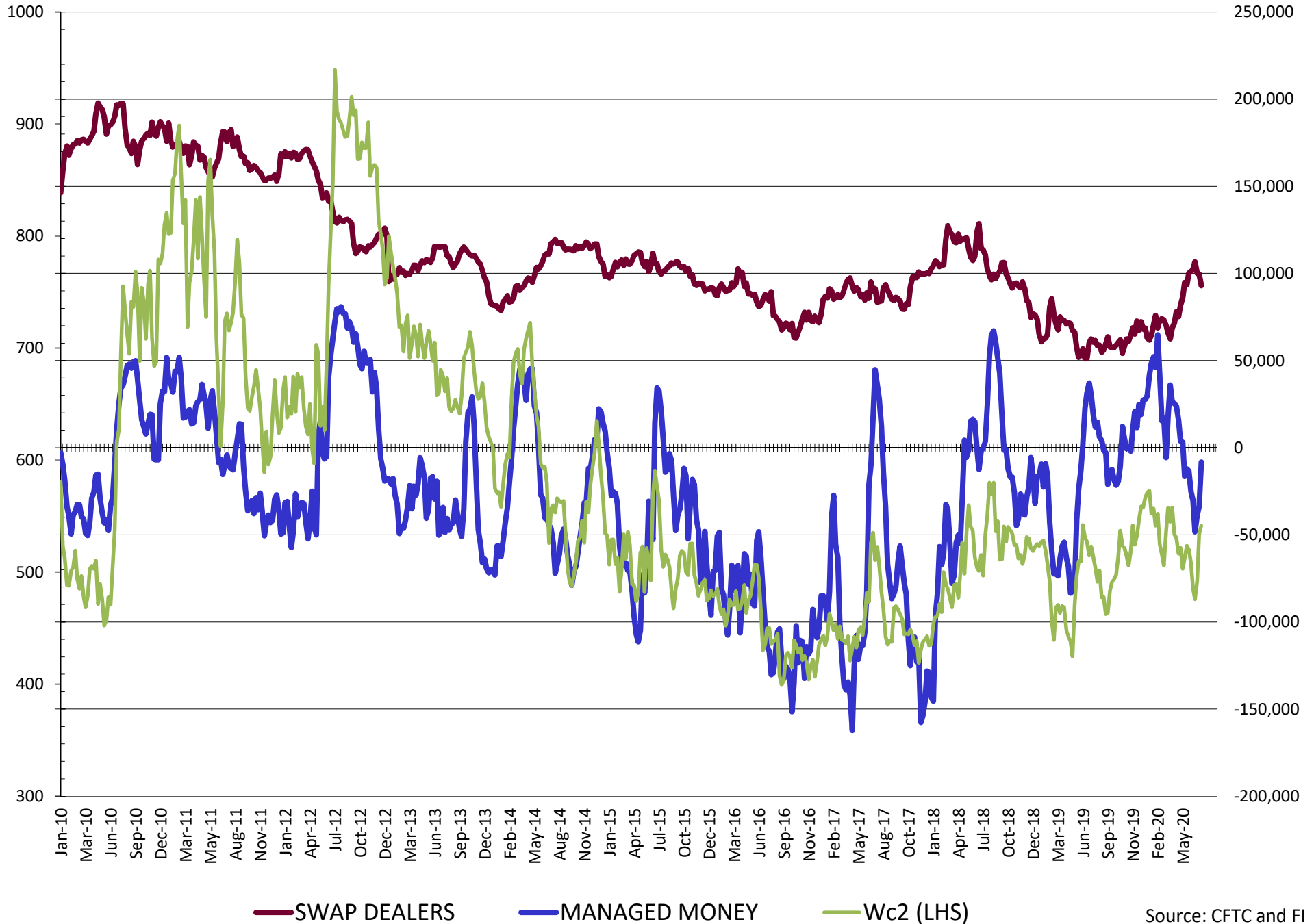
NET POSITION FUTURES AND OPTIONS OF SWAP AND MANAGED FUNDS IN CORN



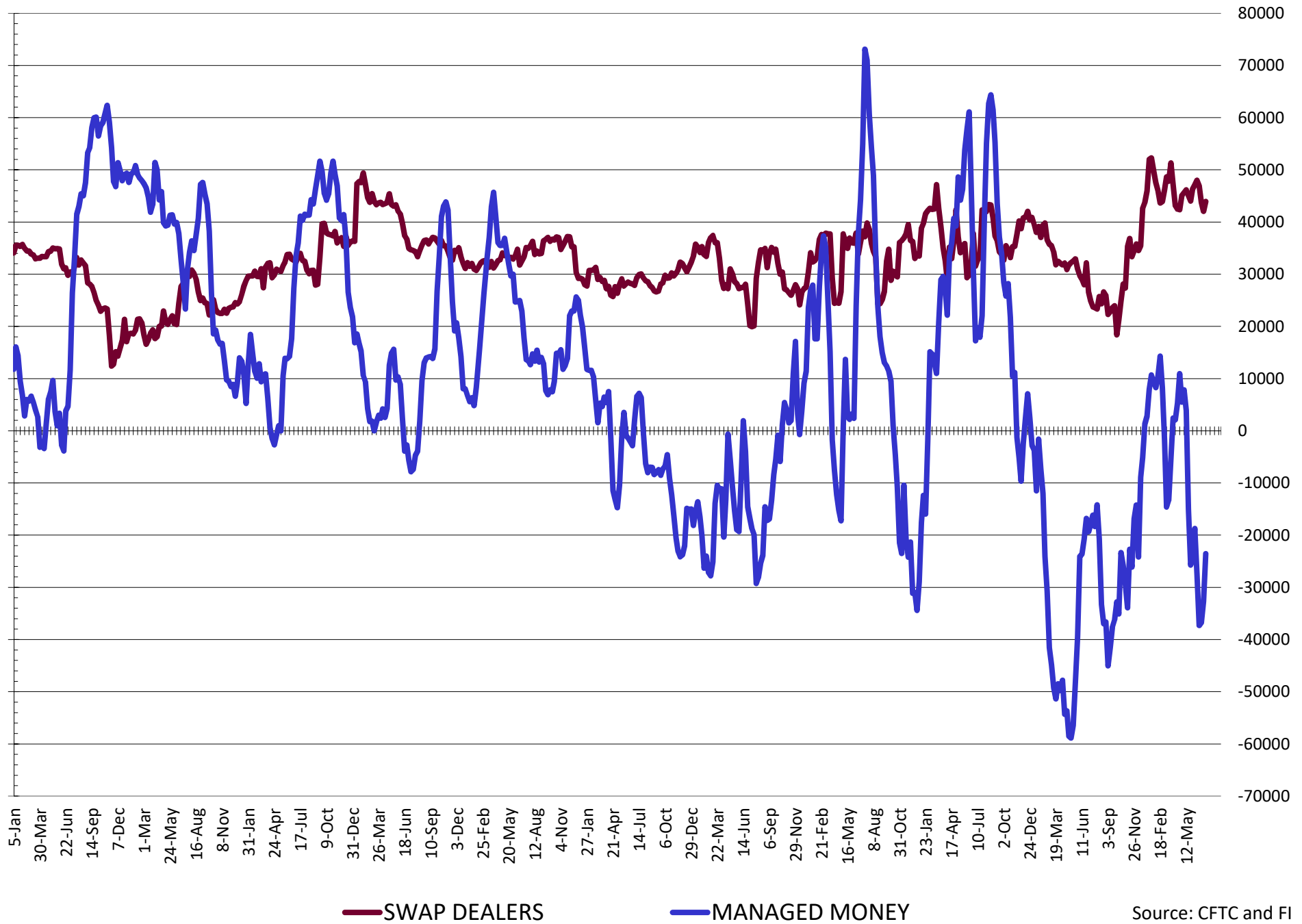
— SWAP DEALERS
 — MANAGED MONEY
 — Cc2 (LHS)

Source: CFTC and FI
7/18/2020

NET POSITION FUTURES AND OPTIONS OF SWAP AND MANAGED FUNDS IN CHICAGO WHEAT

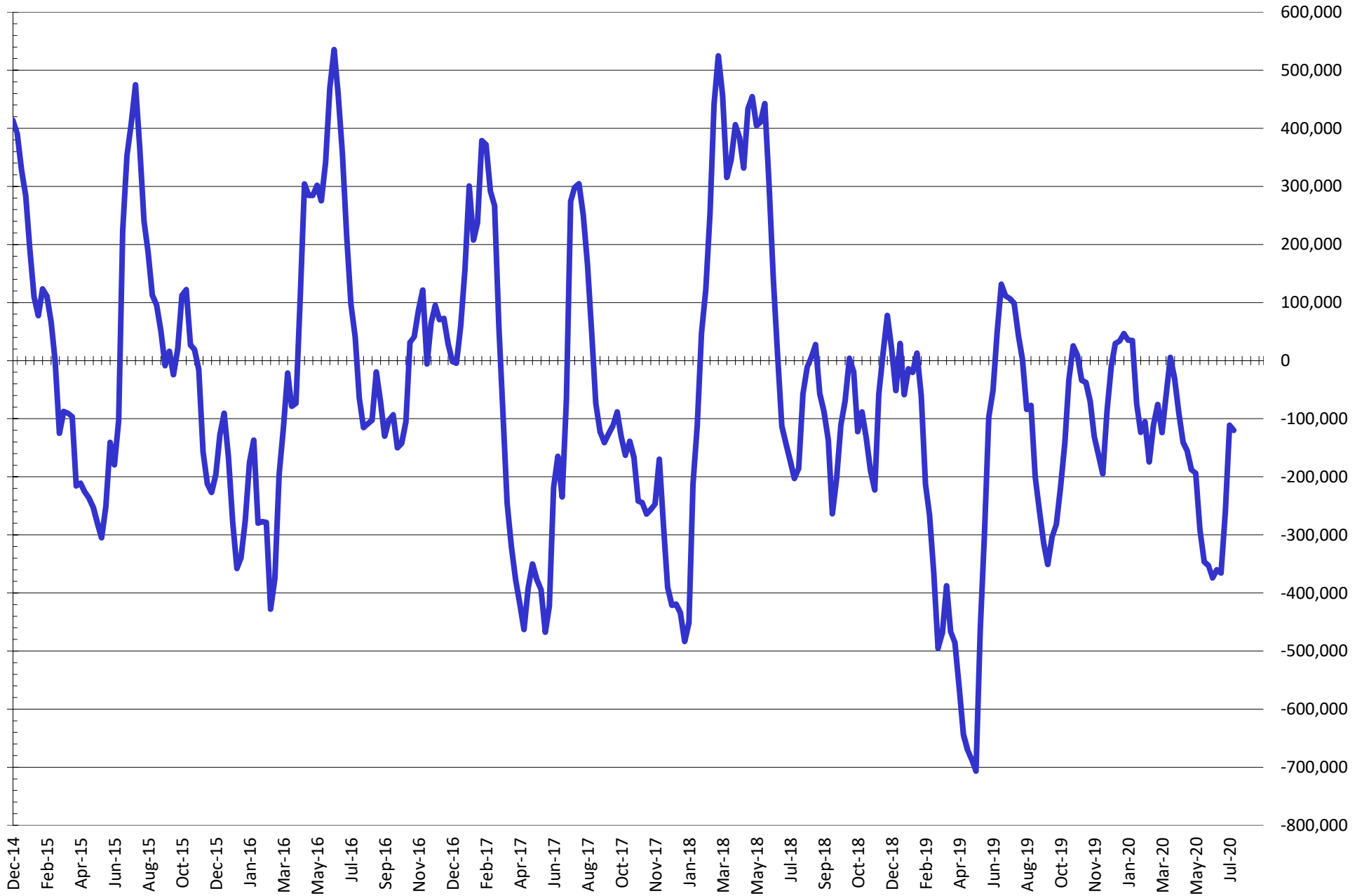


NET POSITION FUTURES AND OPTIONS OF SWAP DEALERS AND MANAGED FUNDS IN KANSAS WHEAT



Source: CFTC and FI
7/18/2020

NET POSITION FUTURES AND OPTIONS OF SWAP AND MANAGED FUNDS IN COMBINED SRW, HRW, CORN, SOYBEANS, SOYMEAL AND SOYOIL



— Net Managed Money

Source: CFTC and FI
7/18/2020

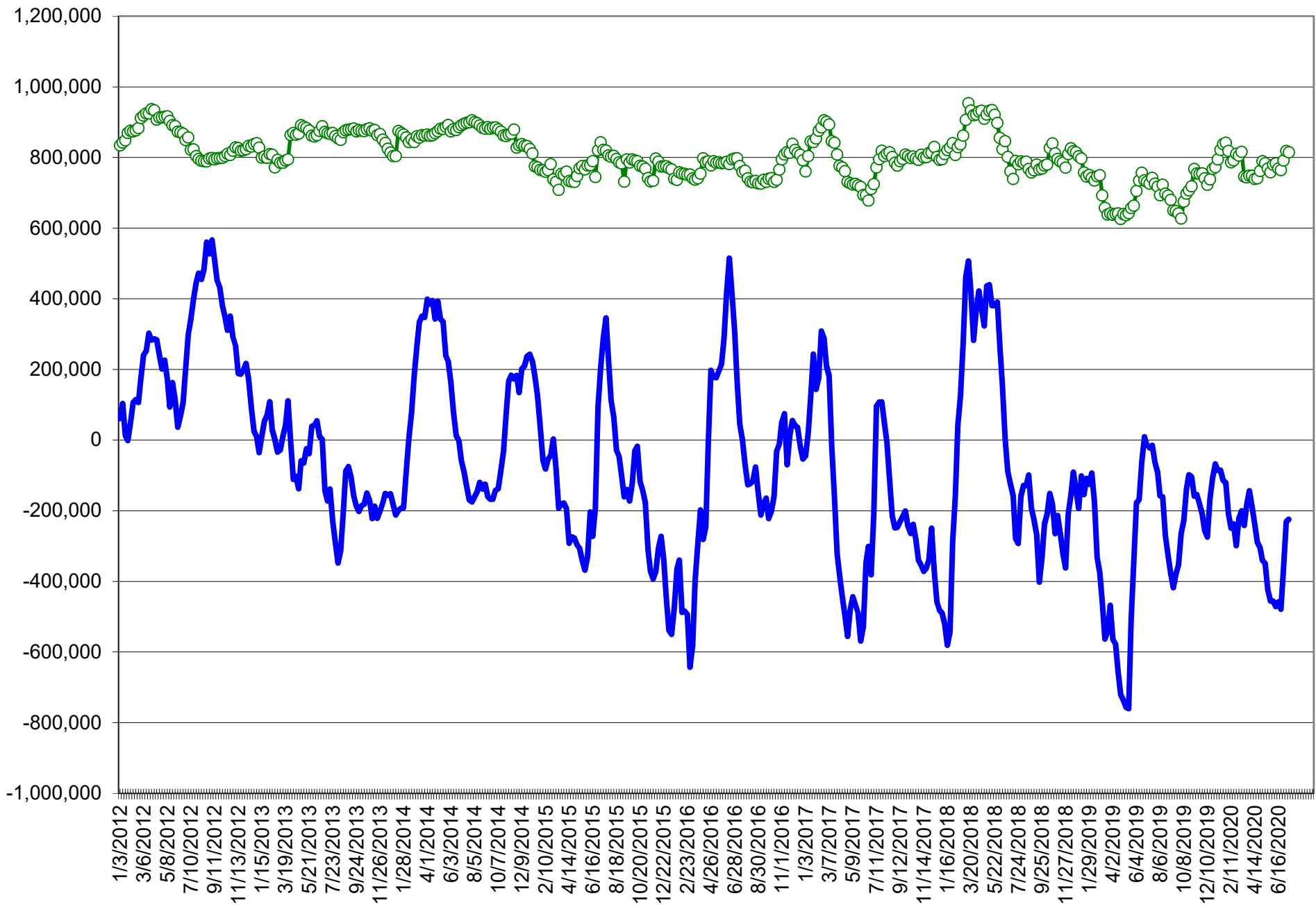
COMMITMENT OF TRADERS
FUTURES & OPTIONS NET POSITIONS (INDEX BROKEN OUT)
AS OF 07/14/2020
(IN THOUSAND CONTRACTS)

	COMMERCIAL				(FUND) NON COMMERCIAL				(SPEC) NON-REPORTABLE			
	14-Jul	7-Jul	30-Jun	23-Jun	14-Jul	7-Jul	30-Jun	23-Jun	14-Jul	7-Jul	30-Jun	23-Jun
	WHEAT											
Chicago	(84.9)	(55.9)	(53.4)	(39.7)	(20.7)	(60.6)	(59.7)	(75.3)	(18.5)	(12.0)	(13.7)	(13.6)
Kansas City	(24.4)	(16.2)	(11.1)	(5.0)	(31.8)	(37.2)	(43.7)	(47.8)	2.9	0.6	0.9	(1.3)
Minneapolis	-	-	-	-	-	-	-	-	-	-	-	-
All Wheat	(109.4)	(72.1)	(64.5)	(44.7)	(52.5)	(97.8)	(103.3)	(123.1)	(15.6)	(11.4)	(12.8)	(14.9)
CORN	(101.5)	(94.8)	(39.2)	12.4	(171.6)	(190.9)	(242.9)	(320.5)	(38.7)	(22.0)	(16.9)	21.4
OATS	-	-	-	-	-	-	-	-	-	-	-	-
SOYBEANS	(203.7)	(244.2)	(212.7)	(180.5)	35.4	70.7	44.4	18.4	(0.2)	5.0	6.6	11.7
SOY OIL	(86.5)	(102.8)	(81.3)	(74.5)	(9.7)	4.3	(11.0)	(14.7)	7.1	8.3	8.4	7.8
SOY MEAL	(63.1)	(77.6)	(41.6)	(48.5)	(25.4)	(17.6)	(47.0)	(38.8)	20.9	24.2	22.3	24.3

	TOTAL OPEN INTEREST				(INDEX) COMMERCIAL INDEX TRADERS				(INDEX) % NET OF TOTAL OPEN INTEREST			
	14-Jul	7-Jul	30-Jun	23-Jun	14-Jul	7-Jul	30-Jun	23-Jun	14-Jul	7-Jul	30-Jun	23-Jun
	WHEAT											
Chicago	490,448	496,820	484,999	570,036	124.2	128.5	126.8	128.6	25.3%	25.9%	26.1%	22.6%
Kansas City	269,513	257,653	249,999	265,741	53.3	52.9	53.9	54.1	19.8%	20.5%	21.6%	20.4%
Minneapolis	-	-	-	-	-	-	-	-	-	-	-	-
All Wheat	759,961	754,473	734,998	835,777	177.5	181.3	180.7	182.8	23.4%	24.0%	24.6%	21.9%
CORN	1,876,486	1,872,744	1,926,269	2,034,732	311.8	307.7	299.0	286.8	16.6%	16.4%	15.5%	14.1%
OATS	-	-	-	-	-	-	-	-	-	-	-	-
SOYBEANS	975,293	1,001,034	949,644	1,045,355	168.6	168.5	161.7	150.3	17.3%	16.8%	17.0%	14.4%
SOY OIL	467,484	471,406	457,565	506,222	89.1	90.2	83.9	81.4	19.1%	19.1%	18.3%	16.1%
SOY MEAL	463,141	475,449	480,264	502,157	67.6	70.9	66.3	63.0	14.6%	14.9%	13.8%	12.6%

SOURCE: CFTC & FI

NET POSITION FUTURES AND OPTIONS OF SPECULATORS AND INDEX FUNDS IN COMBINED SRW, HRW, CORN, SOYBEANS, SOYMEAL AND SOYOIL



Source: CFTC and FI

○ Net Index

— Net Speculator

7/18/2020

Traditional Daily Estimate of Funds 7/14/20

	(Neg)-"Short"	Pos-"Long"			
Actual less Est.	58.5	(5.8)	5.0	1.4	(5.9)
	Corn	Bean	Chi. Wheat	Meal	Oil
Act	(99.7)	127.7	16.7	6.0	16.3
15-Jul	0.0	8.0	18.0	1.0	4.0
16-Jul	15.0	8.0	(12.0)	1.0	6.0
17-Jul	9.0	5.0	(1.0)	(1.0)	4.0
20-Jul					
21-Jul					
FI Est. of Futures Only 7/14/20	(75.7)	148.7	21.7	7.0	30.3
FI Est. Futures & Options	(45.9)	109.6	16.1	(5.7)	29.6
Futures only record long	498.2 2/1/2011	260.4 6/27/2017	86.5 8/7/2018	167.5 5/1/2018	160.2 11/1/2016
Futures only record short	(235.0) 6/9/2020	(118.3) 4/30/2019	(130.0) 4/25/2017	(49.5) 3/1/2016	(69.8) 9/18/2018
Futures and options record net long	458.5 9/28/2010	259.8 5/1/2012	64.8 8/7/2012	132.1 5/1/2018	159.2 1/1/2016
Futures and options record net short	(270.6) 4/26/2019	(132.0) 4/30/2019	(143.3) 4/25/2017	(64.1) 3/1/2016	(77.8) 9/18/2018

Managed Money Daily Estimate of Funds 7/14/20

	Corn	Bean	Chi. Wheat	Meal	Oil
Latest CFTC Fut. Only	(148.8)	63.7	(6.5)	(29.7)	10.4
Latest CFTC F&O	(133.6)	66.0	(8.3)	(30.5)	10.2
FI Est. Managed Fut. Only	(125)	85	(2)	(29)	24
FI Est. Managed Money F&O	(110)	87	(3)	(29)	24

Index Funds Latest Positions (as of last Tuesday)

Index Futures & Options	311.8	168.6	124.2	NA	89.1
Change From Previous Week	4.2	0.1	(4.3)	NA	(1.1)

Source: Reuters, CFTC & FI (FI est. are noted with latest date)

Disclaimer

TO CLIENTS/PROSPECTS OF FUTURES INTERNATIONAL, SEE RISK DISCLOSURE BELOW:

THIS COMMUNICATION IS CONVEYED AS A SOLICITATION FOR ENTERING INTO A DERIVATIVES TRANSACTION.

Any trading recommendations and market or other information to Customer by Futures International (FI), although based upon information obtained from sources believed by FI to be reliable may not be accurate and may be changed without notice to customer. FI makes no guarantee as to the accuracy or completeness of any of the information or recommendations furnished to Customer. Customer understands that FI, its managers, employees and/or affiliates may have a position in commodity futures, options or other derivatives which may not be consistent with the recommendations furnished by FI to Customer.

The risk of trading futures and options and other derivatives involves a substantial risk of loss and is not suitable for all persons. In purchasing an option, the risk is limited to the premium paid, and all commissions and fees involved with the trade. When an option is shorted or written, the writer of the option has unlimited risk with respect to the option written. The use of options strategies such as a straddles and strangles involve multiple option positions and may substantially increase the amount of commissions and fees paid to execute the strategy. Option prices do not necessarily move in tandem with cash or futures prices. Each person must consider whether a particular trade, combination of trades or strategy is suitable for that person's financial means and objectives.

This material may include discussions of seasonal patterns, however, futures prices have already factored in the seasonal aspects of supply and demand, and seasonal patterns are no indication of future market trends. Finally, past performance is not indicative of future results.

This communication may contain links to third party websites which are not under the control of FI and FI is not responsible for their content. Products and services are offered only in jurisdictions where solicitation and sale are lawful, and in accordance with applicable laws and regulations in each such jurisdiction.