

CFTC COMMITMENT OF TRADERS REPORT

As of 6/30/2020

TRADITIONAL FUNDS net position changes

Wed to Tue, in 000 contracts

	Corn	Bean	Meal	Oil	Chi. Wheat	KC Wheat	Min Wheat
Futures Only	64.5	14.9	(11.6)	4.6	0.0	(0.5)	(4.6)
Futures & Options Combined	78.6	26.7	(6.4)	3.9	15.2	3.0	(4.3)

TRADITIONAL COMMERCIAL net position changes

	Corn	Bean	Meal	Oil	Chi. Wheat	KC Wheat	Min Wheat
Futures Only	(27.3)	(10.1)	12.7	(5.0)	0.3	(1.5)	5.5
Futures & Options Combined	(40.3)	(21.6)	8.5	(4.6)	(15.1)	(5.3)	5.3

MANAGED MONEY net position changes

	Corn	Bean	Meal	Oil	Chi. Wheat	KC Wheat	Min Wheat
Futures Only	74.3	20.3	(6.7)	1.3	7.6	0.8	(3.8)
Futures & Options Combined	75.8	23.6	(6.5)	1.6	9.4	0.6	(3.8)

SWAP DEALERS net position changes

	Corn	Bean	Meal	Oil	Chi. Wheat	KC Wheat	Min Wheat
Futures Only	18.3	3.9	(1.7)	(2.1)	0.7	(2.4)	0.1
Futures & Options Combined	9.3	(0.6)	(2.1)	(2.2)	(6.5)	(3.2)	0.2

PRODUCERS/END USERS net position changes

	Corn	Bean	Meal	Oil	Chi. Wheat	KC Wheat	Min Wheat
Futures Only	(45.6)	(14.0)	14.4	(2.9)	(0.4)	0.9	5.4
Futures & Options Combined	(49.6)	(21.1)	10.5	(2.4)	(8.6)	(2.0)	5.1

INDEX net position changes

	Corn	Bean	Meal	Oil	Chi. Wheat	KC Wheat	Min Wheat
Futures & Options Combined	12.1	11.4	3.3	2.5	(1.8)	(0.2)	NA

SUPPLEMENTAL NON-COMMERCIAL net position changes

	Corn	Bean	Meal	Oil	Chi. Wheat	KC Wheat	Min Wheat
Futures & Options Combined	77.7	25.9	(8.2)	3.7	15.7	4.2	NA

OPEN INTEREST net position changes

Wed to Tue, in 000 contracts

	Corn	Bean	Meal	Oil	Chi. Wheat	KC Wheat	Min Wheat
Futures Only	(50.0)	(51.3)	(12.4)	(29.7)	(29.8)	(7.1)	1.5
Futures & Options Combined	(108.5)	(95.7)	(21.9)	(48.7)	(85.0)	(15.7)	1.1

Source: CFTC and FI

Wed to Tue, in 000 contracts

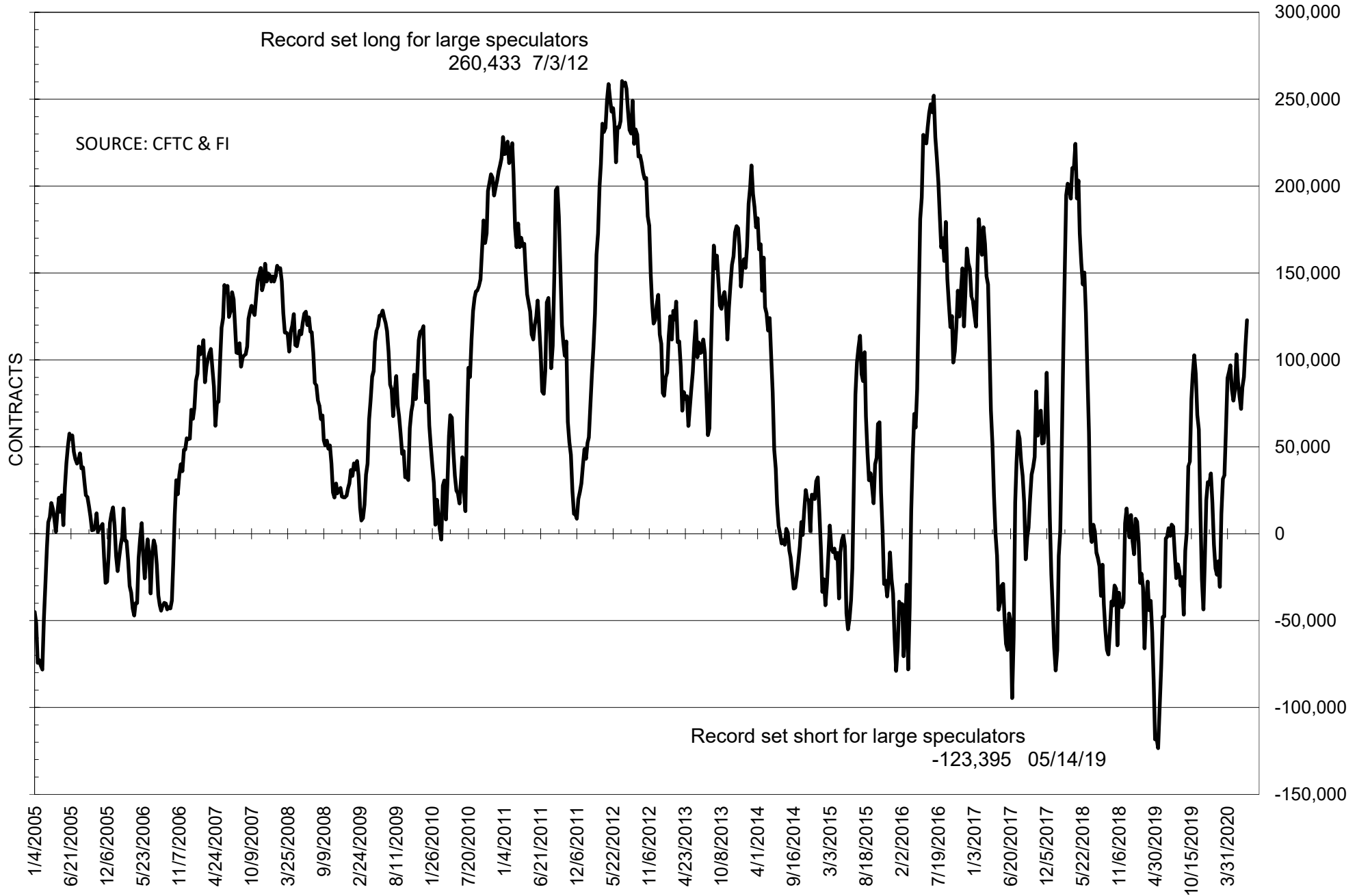
**COMMITMENT OF TRADERS
FUTURES ONLY NET POSITIONS
AS OF 06/30/2020
(IN THOUSAND CONTRACTS)**

	COMMERCIAL				(FUND) NON COMMERCIAL				(SPEC) NON-REPORTABLE			
	30-Jun	23-Jun	16-Jun	9-Jun	30-Jun	23-Jun	16-Jun	9-Jun	30-Jun	23-Jun	16-Jun	9-Jun
	WHEAT											
Chicago	28.4	28.1	14.3	11.0	-14.6	-14.6	2.0	1.2	-13.7	-13.4	-16.2	-12.2
Kansas City	34.6	36.1	30.8	22.3	-35.3	-34.8	-28.9	-20.9	0.7	-1.3	-1.9	-1.4
Minneapolis	12.7	7.2	10.5	12.6	-14.8	-10.2	-12.9	-15.1	2.1	3.0	2.3	2.5
All Wheat	75.7	71.4	55.6	45.9	-64.8	-59.7	-39.8	-34.8	-10.9	-11.7	-15.8	-11.1
CORN	166.4	193.7	180.1	197.6	-157.4	-222.0	-214.7	-235.0	-8.9	28.3	34.5	37.5
OATS	-2.8	-2.4	-2.2	-2.3	2.3	2.0	1.8	2.0	0.5	0.4	0.5	0.3
SOYBEANS	-127.3	-117.2	-102.2	-94.0	122.9	108.0	90.2	84.1	4.4	9.2	12.0	9.9
SOY OIL	-18.0	-13.0	-10.3	-14.3	10.2	5.5	3.1	4.7	7.8	7.4	7.2	9.6
SOY MEAL	-5.7	-18.4	-19.1	-16.0	-14.8	-3.2	-4.6	-8.0	20.5	21.6	23.7	24.1

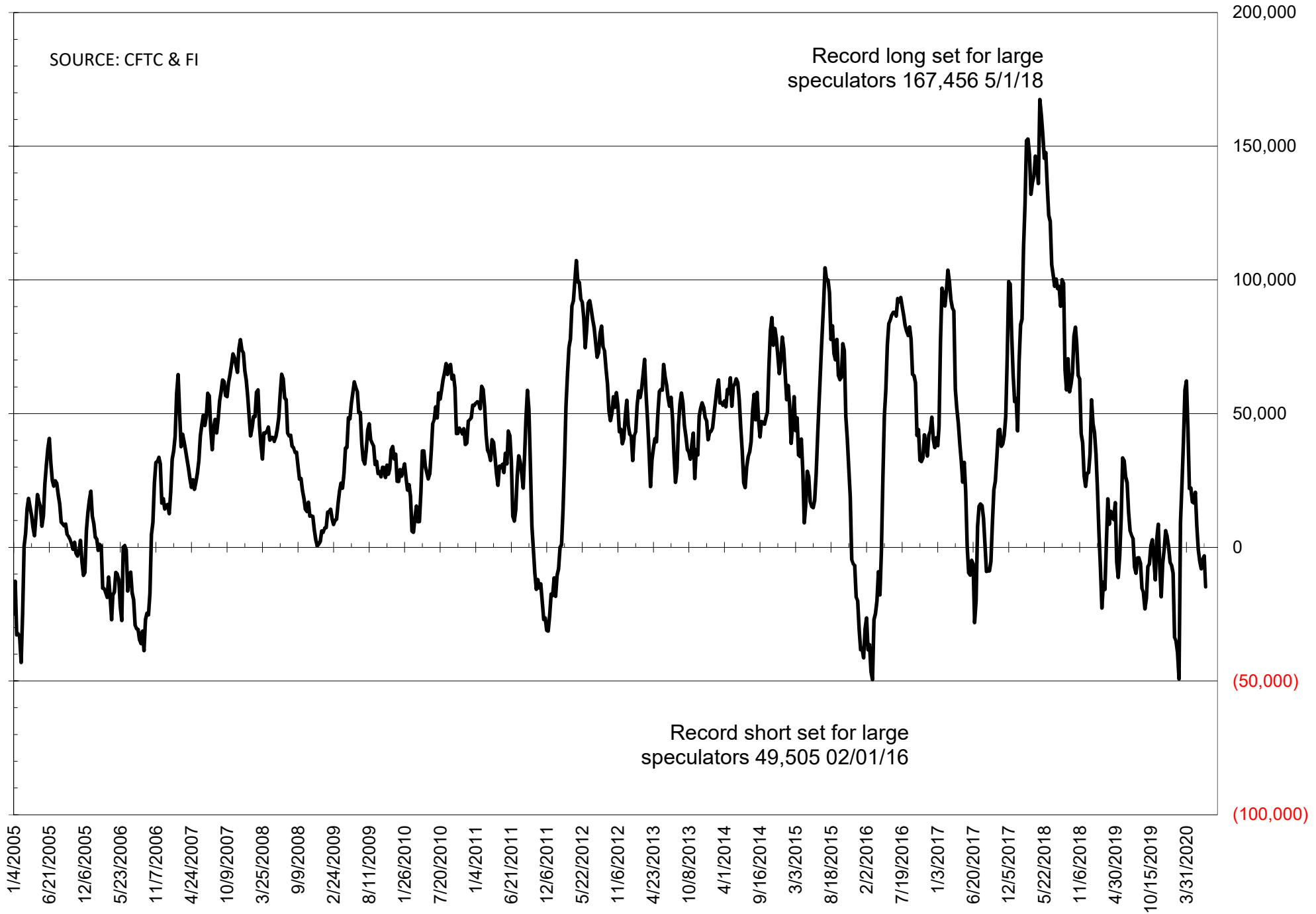
	TOTAL OPEN INTEREST				NEARBY FUTURES PRICE					30-Jun-20 LAST REPORTED % HELD BY TRADERS			
	30-Jun	23-Jun	16-Jun	9-Jun	Q/U Latest	Q/U 30-Jun	N 23-Jun	N 16-Jun	N 9-Jun	LARGE FUND		SMALL	
										LONG	SHORT	LONG	SHORT
WHEAT													
Chicago	403108	432871	413421	380528	493.50	492.25	486.00	495.75	504.00	0%	32%	0%	9%
Kansas City	235012	242093	232612	224805	439.50	440.50	435.00	438.25	457.75	0%	36%	0%	8%
Minneapolis	61738	60243	66191	70371	512.75	520.25	514.75	515.00	524.25	0%	36%	0%	13%
CORN	1559526	1609523	1583800	1534533	346.75	340.75	325.00	329.00	327.50	0%	27%	0%	11%
OATS	4292	4479	4557	4995	283.75	290.25	304.25	302.75	317.25	0%	1%	0%	21%
SOYBEANS	811476	862796	887070	871756	898.25	878.50	875.00	867.00	863.25	25%	10%	7%	7%
SOY OIL	430592	460250	463665	473515	28.52	28.05	28.17	27.99	28.23	0%	15%	0%	6%
SOY MEAL	441205	453600	448936	445736	297.80	289.30	286.30	287.90	287.10	0%	22%	0%	6%

SOURCE: CFTC & FI

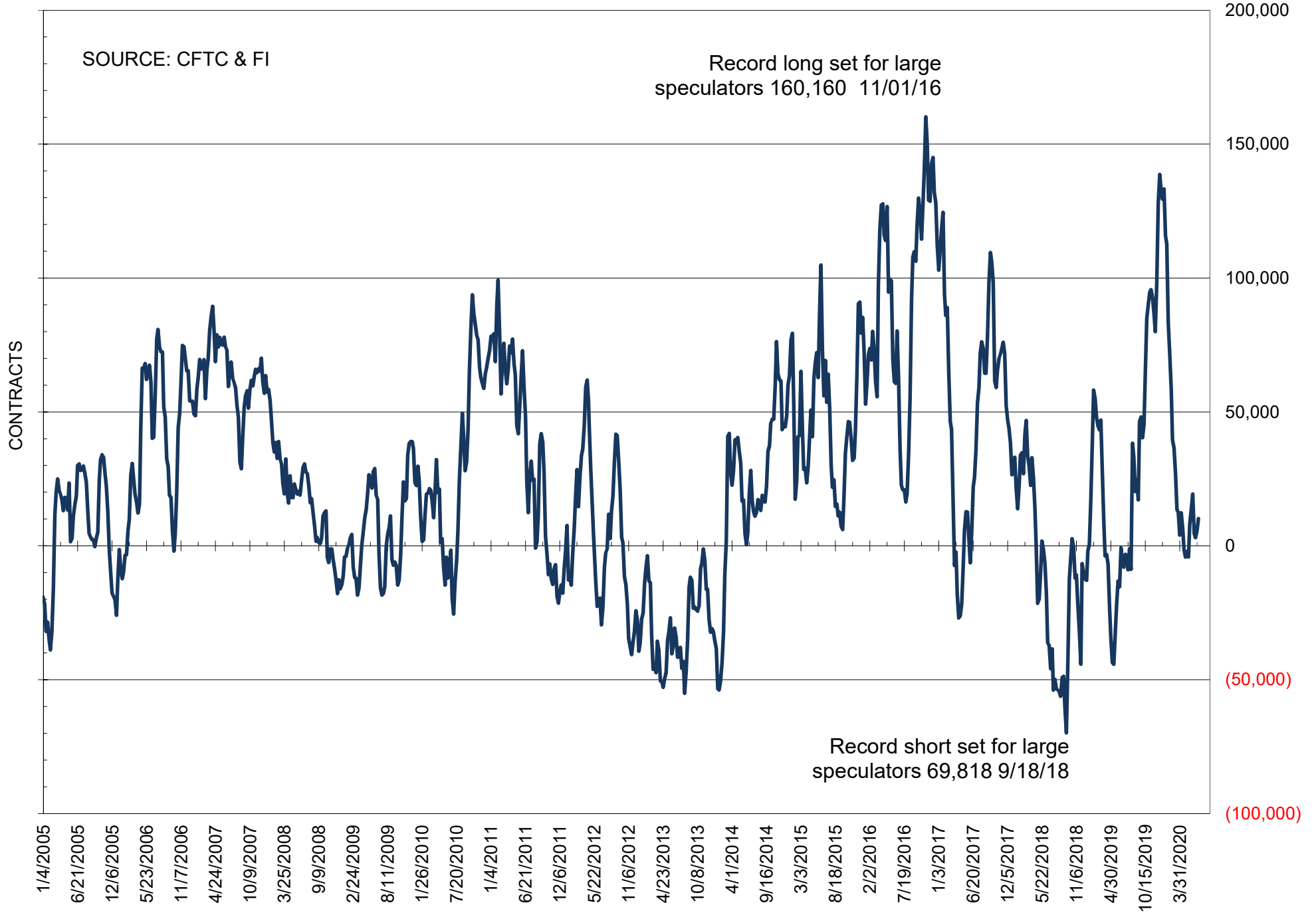
NET POSITION OF FUTURES ONLY LARGE SPECS IN SOYBEANS



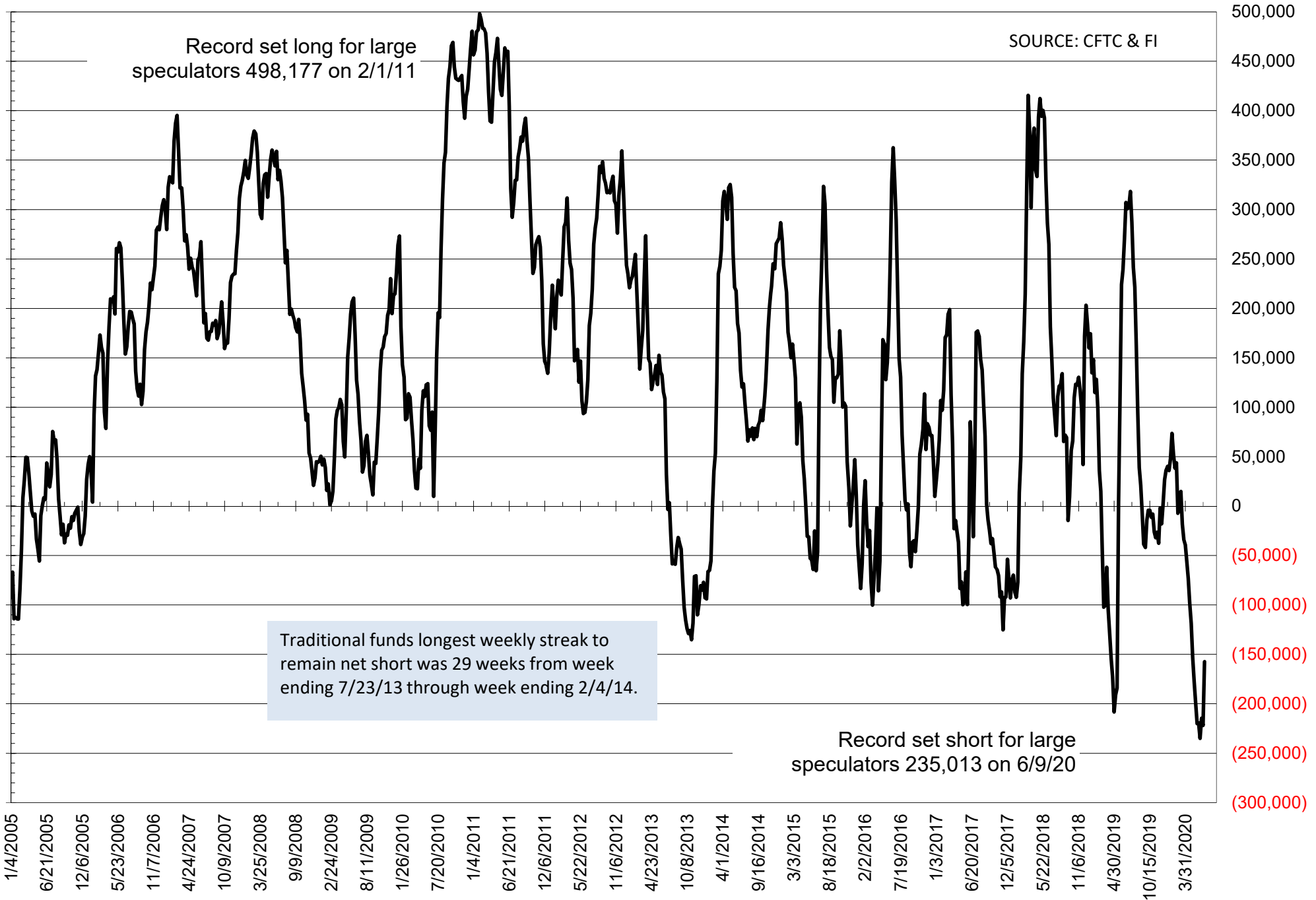
NET POSITION OF FUTURES ONLY LARGE SPECS IN SOYMEAL



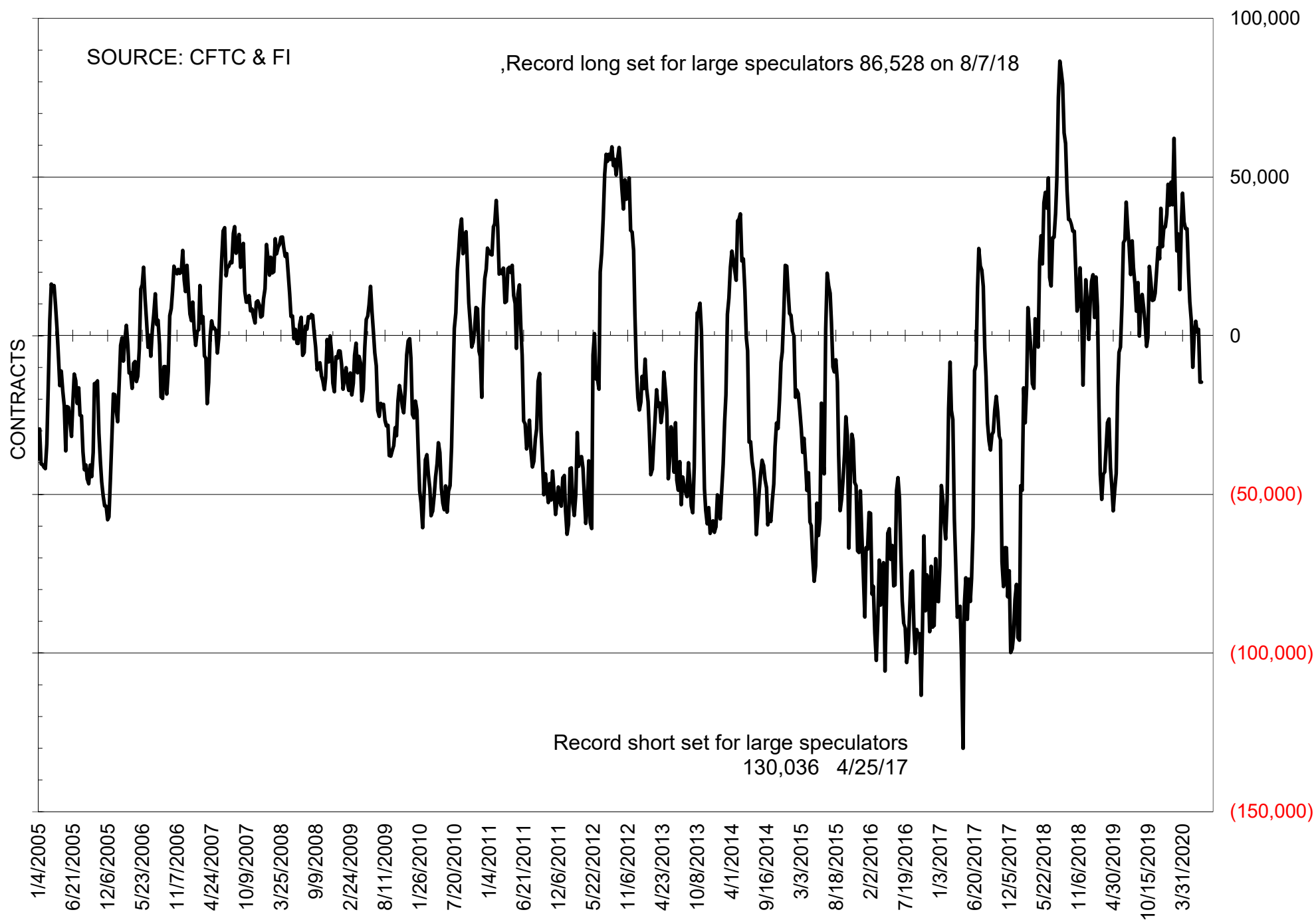
NET POSITION OF FUTURES ONLY LARGE SPECS IN SOYOIL



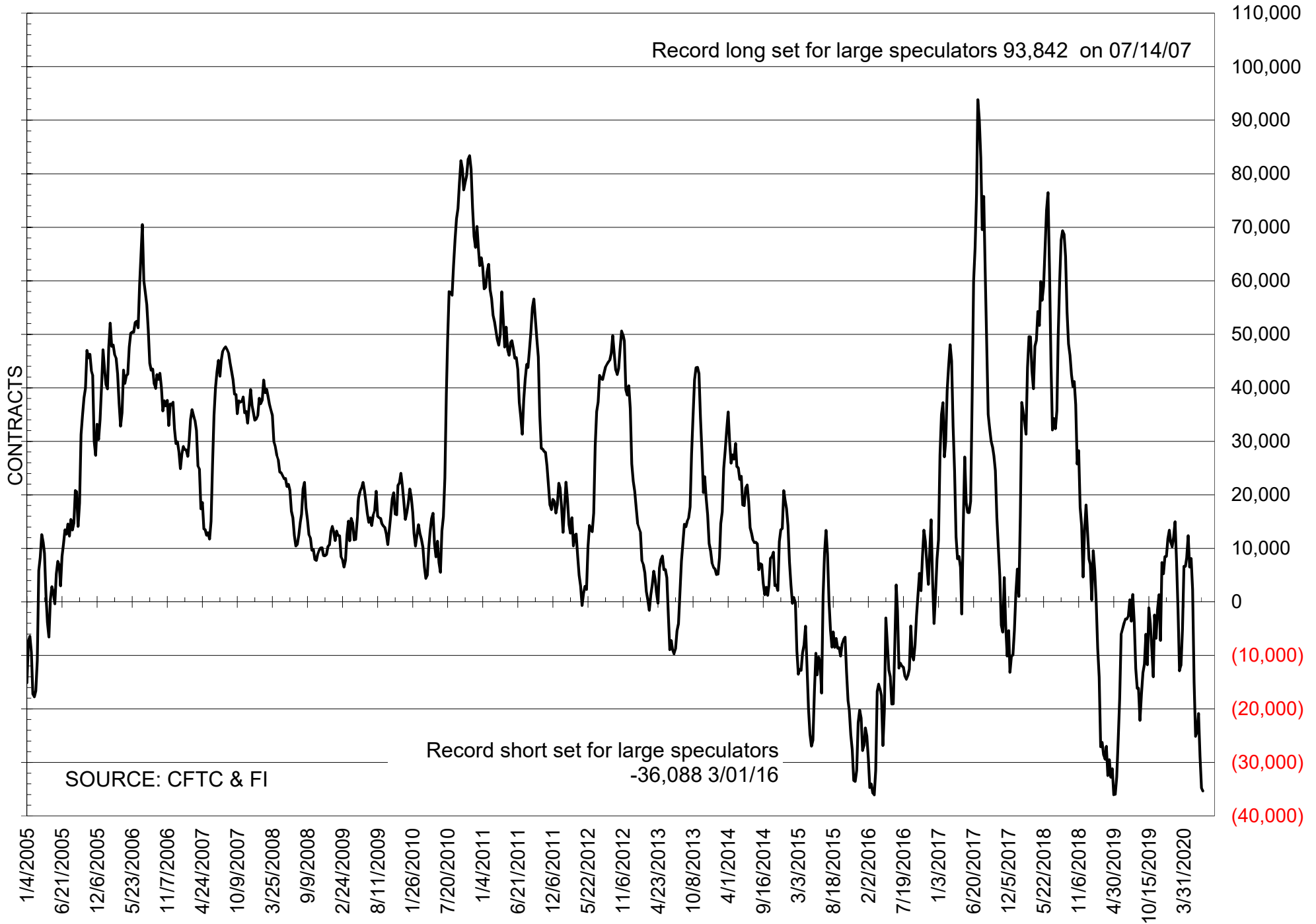
NET POSITION OF LARGE SPECULATORS IN CORN



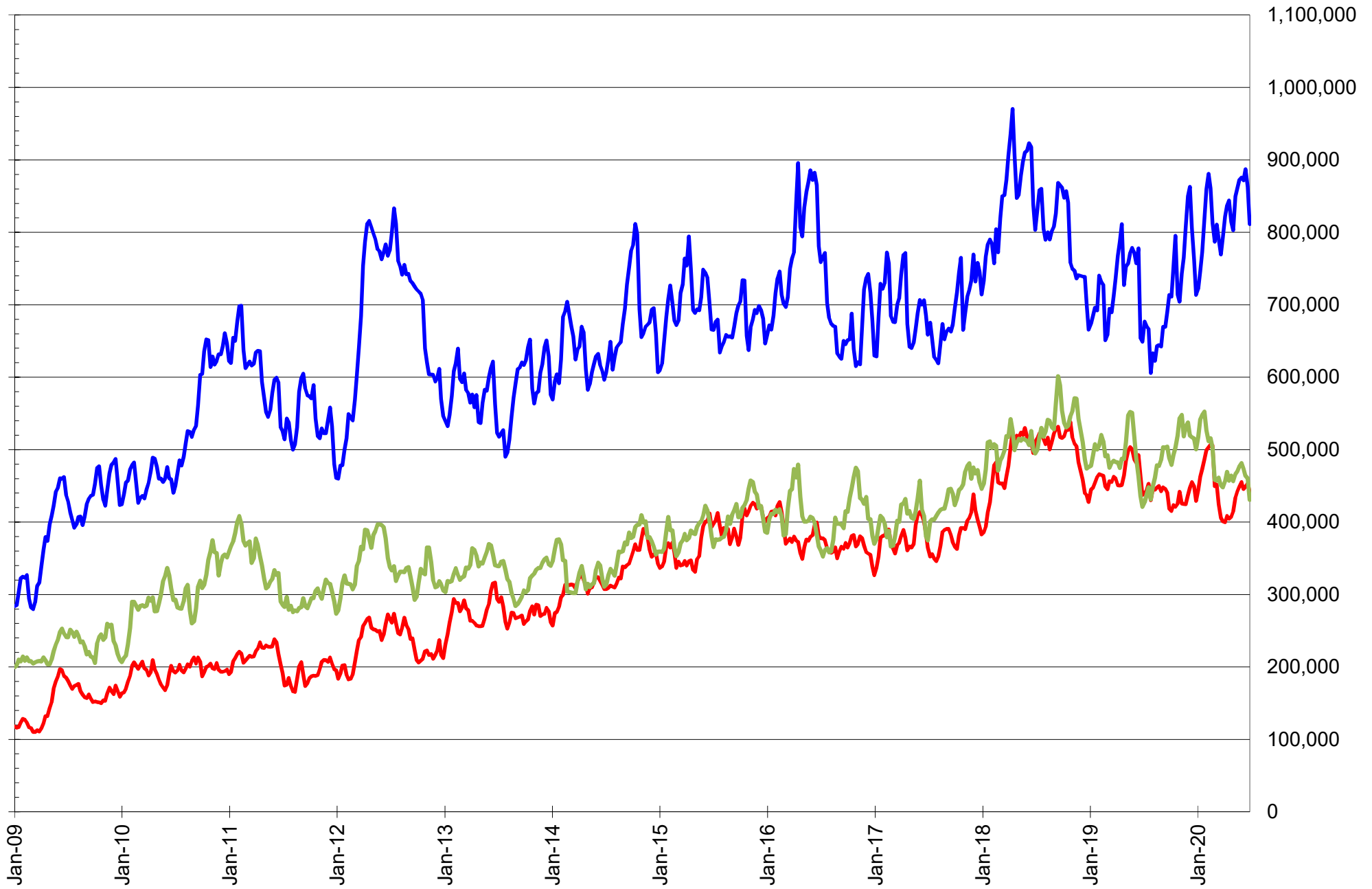
NET POSITION OF FUTURES ONLY LARGE SPECS IN CHICAGO WHEAT



NET POSITION OF LARGE SPECULATORS IN KANSAS CITY WHEAT



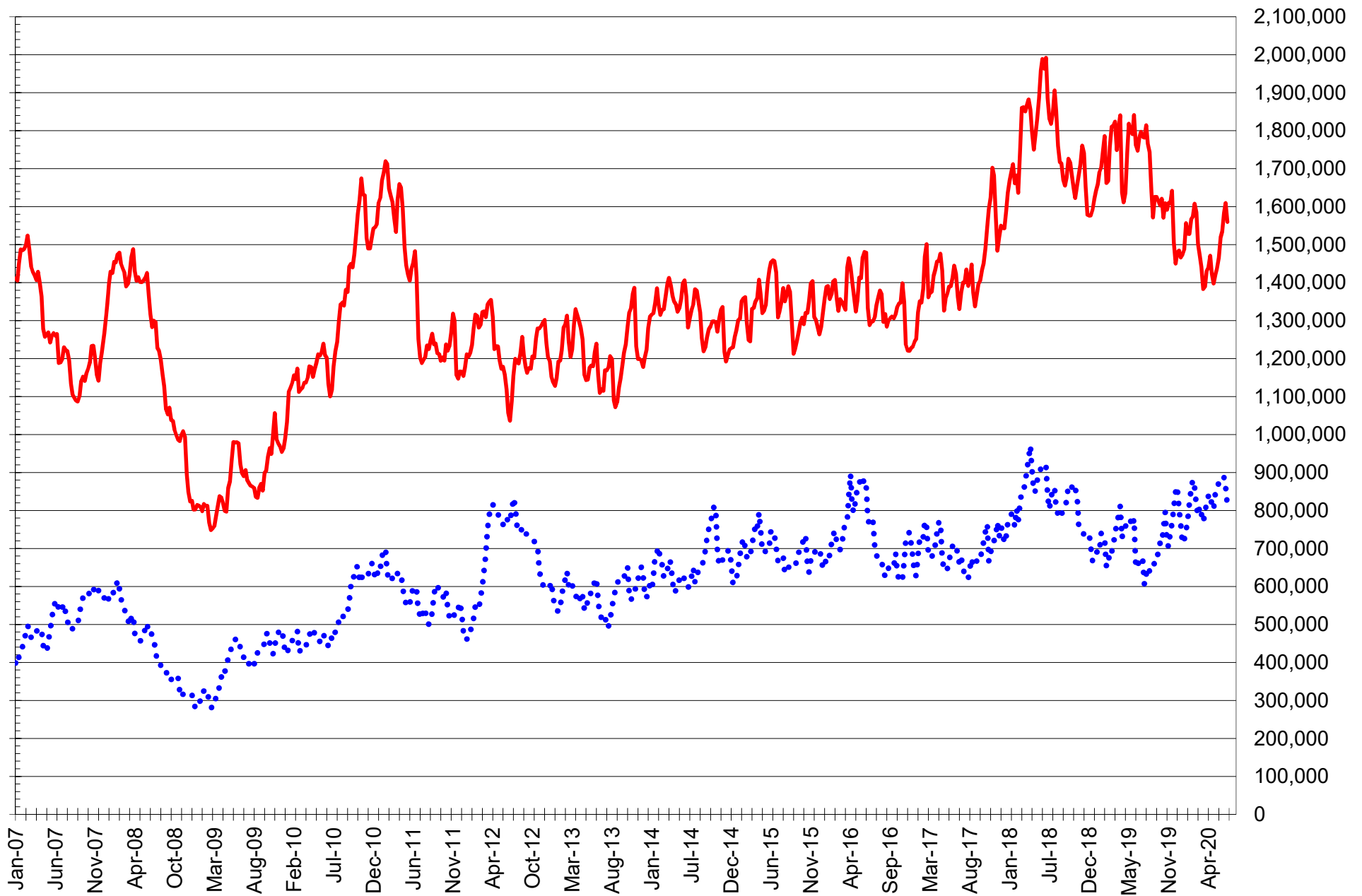
TOTAL OPEN INTEREST IN SOYBEANS, MEAL AND OIL, FUTURES ONLY



SOURCE: CFTC & FI

— SOYBEANS — SOYBEAN MEAL — SOYBEAN OIL

TOTAL OPEN INTEREST IN CORN AND SOYBEANS, FUTURES ONLY



SOURCE: CFTC & FI

— CORN

..... SOYBEANS

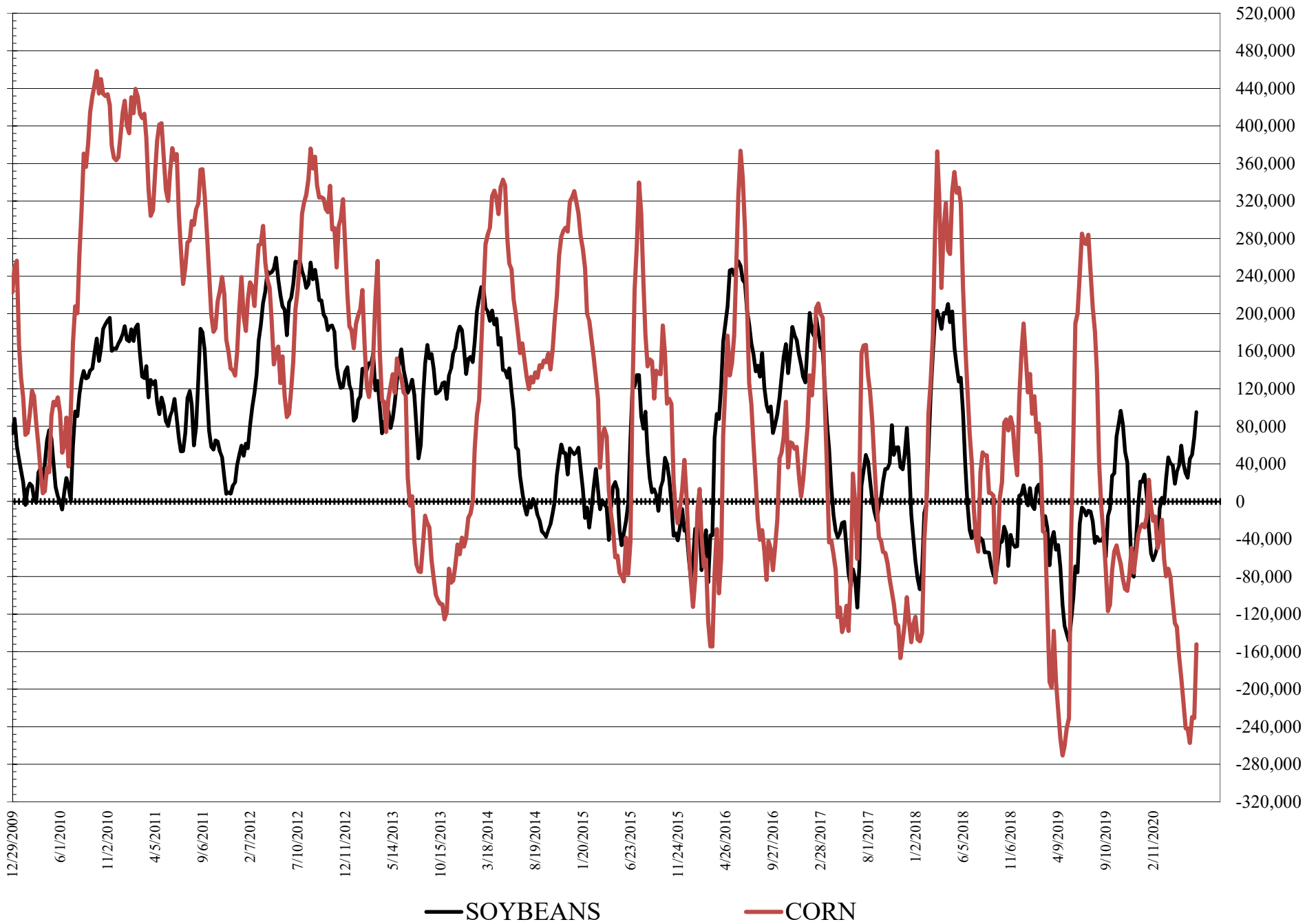
**COMMITMENT OF TRADERS
FUTURES & OPTIONS NET POSITIONS
AS OF 06/30/2020
(IN THOUSAND CONTRACTS)**

	COMMERCIAL				(FUND) NON COMMERCIAL				(SPEC) NON-REPORTABLE			
	30-Jun	23-Jun	16-Jun	9-Jun	30-Jun	23-Jun	16-Jun	9-Jun	30-Jun	23-Jun	16-Jun	9-Jun
	WHEAT											
Chicago	43.5	58.5	36.1	26.0	-29.8	-44.9	-19.4	-13.2	-13.7	-13.6	-16.8	-12.8
Kansas City	37.4	42.7	35.9	24.4	-38.3	-41.3	-33.7	-22.7	0.9	-1.3	-2.2	-1.6
Minneapolis	13.0	7.7	11.1	13.0	-15.3	-11.0	-13.6	-15.8	2.2	3.2	2.5	2.7
All Wheat	94.0	109.0	83.2	63.4	-83.4	-97.2	-66.7	-51.7	-10.6	-11.7	-16.5	-11.7
CORN	169.1	209.4	195.6	216.9	-152.2	-230.8	-229.8	-257.1	-16.9	21.4	34.2	40.2
OATS	-2.7	-2.4	-2.2	-2.2	2.2	2.0	1.7	1.9	0.5	0.4	0.5	0.3
SOYBEANS	-101.7	-80.0	-65.1	-58.7	95.0	68.3	49.9	45.4	6.6	11.7	15.2	13.4
SOY OIL	-20.7	-16.2	-13.6	-19.2	12.3	8.4	5.9	9.1	8.4	7.8	7.7	10.2
SOY MEAL	4.9	-3.6	-4.6	-1.5	-27.2	-20.7	-21.9	-25.6	22.3	24.3	26.6	27.1

	TOTAL OPEN INTEREST				COMMERCIALS		% HELD BY TRADERS LARGE (FUNDS)		SMALL (NON-REP)	
	30-Jun	23-Jun	16-Jun	9-Jun	LONG	SHORT	LONG	SHORT	LONG	SHORT
	WHEAT									
Chicago	484,999	570,036	538,242	501,935	40%	31%	20%	26%	6%	8%
Kansas City	249,999	265,741	254,969	244,743	51%	36%	18%	34%	8%	8%
Minneapolis	63,073	61,943	67,835	71,930	68%	48%	11%	35%	17%	14%
CORN	1,926,269	2,034,732	2,012,716	1,938,786	48%	39%	13%	21%	11%	12%
OATS	4,623	4,852	4,900	5,380						
SOYBEANS	949,644	1,045,355	1,063,884	1,044,618	46%	57%	18%	8%	7%	7%
SOY OIL	457,565	506,222	508,744	518,021	54%	58%	16%	13%	8%	6%
SOY MEAL	480,264	502,157	498,341	494,752	56%	55%	15%	20%	11%	6%

SOURCE: CFTC & FI

NET POSITION FUTURES AND OPTIONS OF LARGE SPECULATORS IN SOYBEANS AND CORN



**DISAGGREGATED COMMITMENT OF TRADERS
FUTURES ONLY NET POSITIONS
AS OF 06/30/2020
(IN THOUSAND CONTRACTS)**

	PRODUCER / MERCHANT / PROCESSOR / USER				(INDEX/ETF) SWAP DEALERS				(CTA/CPO/OTHER UNREGISTERED) MANAGED MONEY				
	30-Jun	23-Jun	16-Jun	9-Jun	30-Jun	23-Jun	16-Jun	9-Jun	30-Jun	23-Jun	16-Jun	9-Jun	
	WHEAT												
Chicago	(60.0)	(59.6)	(71.9)	(77.6)	88.4	87.6	86.1	88.7	(37.6)	(45.2)	(26.7)	(22.1)	
Kansas City	(9.1)	(10.0)	(16.6)	(24.5)	43.7	46.1	47.4	46.8	(36.7)	(37.5)	(27.7)	(18.8)	
Minneapolis	10.8	5.4	8.5	10.5	2.0	1.9	2.0	2.1	(17.7)	(13.9)	(17.1)	(19.2)	
All Wheat	(58.3)	(64.2)	(79.9)	(91.6)	134.0	135.6	135.5	137.5	(92.1)	(96.6)	(71.4)	(60.2)	
CORN	(10.5)	35.1	21.8	29.8	176.9	158.6	158.3	167.8	(211.7)	(285.9)	(277.6)	(301.9)	
OATS	(2.8)	(2.5)	(2.3)	(2.4)	0.1	0.1	0.1	0.1	1.5	1.3	1.1	1.2	
SOYBEANS	(242.3)	(228.4)	(216.9)	(211.7)	115.1	111.2	114.7	117.6	63.4	43.0	19.9	19.1	
SOY OIL	(101.3)	(98.4)	(94.0)	(94.0)	83.4	85.4	83.7	79.7	0.8	(0.5)	(4.2)	0.2	
SOY MEAL	(71.3)	(85.7)	(86.5)	(89.1)	65.6	67.2	67.4	73.0	(51.9)	(45.2)	(47.8)	(52.6)	
									Managed % of OI				
									Chicago W	-9%	-10%	-6%	-6%
									Corn	-14%	-18%	-18%	-20%
	TOTAL				OTHER REPORTABLE				NON REPORTABLE				
	OPEN INTEREST												
	30-Jun	23-Jun	16-Jun	9-Jun	30-Jun	23-Jun	16-Jun	9-Jun	30-Jun	23-Jun	16-Jun	9-Jun	
WHEAT													
Chicago	403,108	432,871	413,421	380,528	23.0	30.5	28.6	23.3	(13.7)	(13.4)	(16.2)	(12.2)	
Kansas City	235,012	242,093	232,612	224,805	1.4	2.7	(1.3)	(2.0)	0.7	(1.3)	(1.9)	(1.4)	
Minneapolis	61,738	60,243	66,191	70,371	2.9	3.7	4.3	4.1	2.1	3.0	2.3	2.5	
All Wheat	699,858	735,207	712,224	675,704	27.3	37.0	31.6	25.4	(10.9)	(11.7)	(15.8)	(11.1)	
CORN	1,559,526	1,609,523	1,583,800	1,534,533	54.2	64.0	62.9	66.9	(8.9)	28.3	34.5	37.5	
OATS	4,292	4,479	4,557	4,995	0.8	0.7	0.6	0.8	0.5	0.4	0.5	0.3	
SOYBEANS	811,476	862,796	887,070	871,756	59.5	65.0	70.3	65.0	4.4	9.2	12.0	9.9	
SOY OIL	430,592	460,250	463,665	473,515	9.4	6.1	7.3	4.5	7.8	7.4	7.2	9.6	
SOY MEAL	441,205	453,600	448,936	445,736	37.1	42.0	43.3	44.6	20.5	21.6	23.7	24.1	

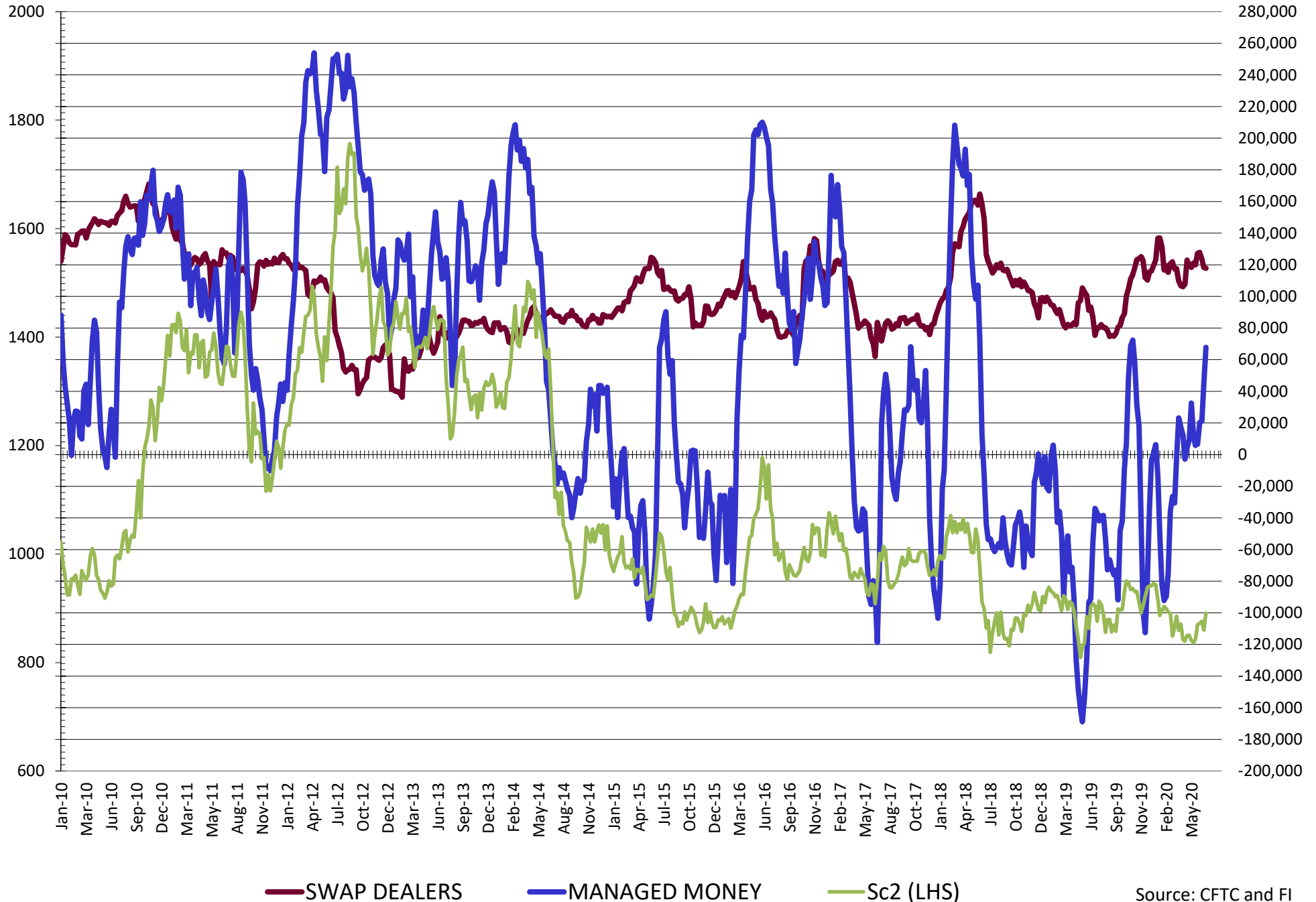
SOURCE: CFTC & FI

**DISAGGREGATED COMMITMENT OF TRADERS
FUTURES & OPTIONS NET POSITIONS
AS OF 06/30/2020
(IN THOUSAND CONTRACTS)**

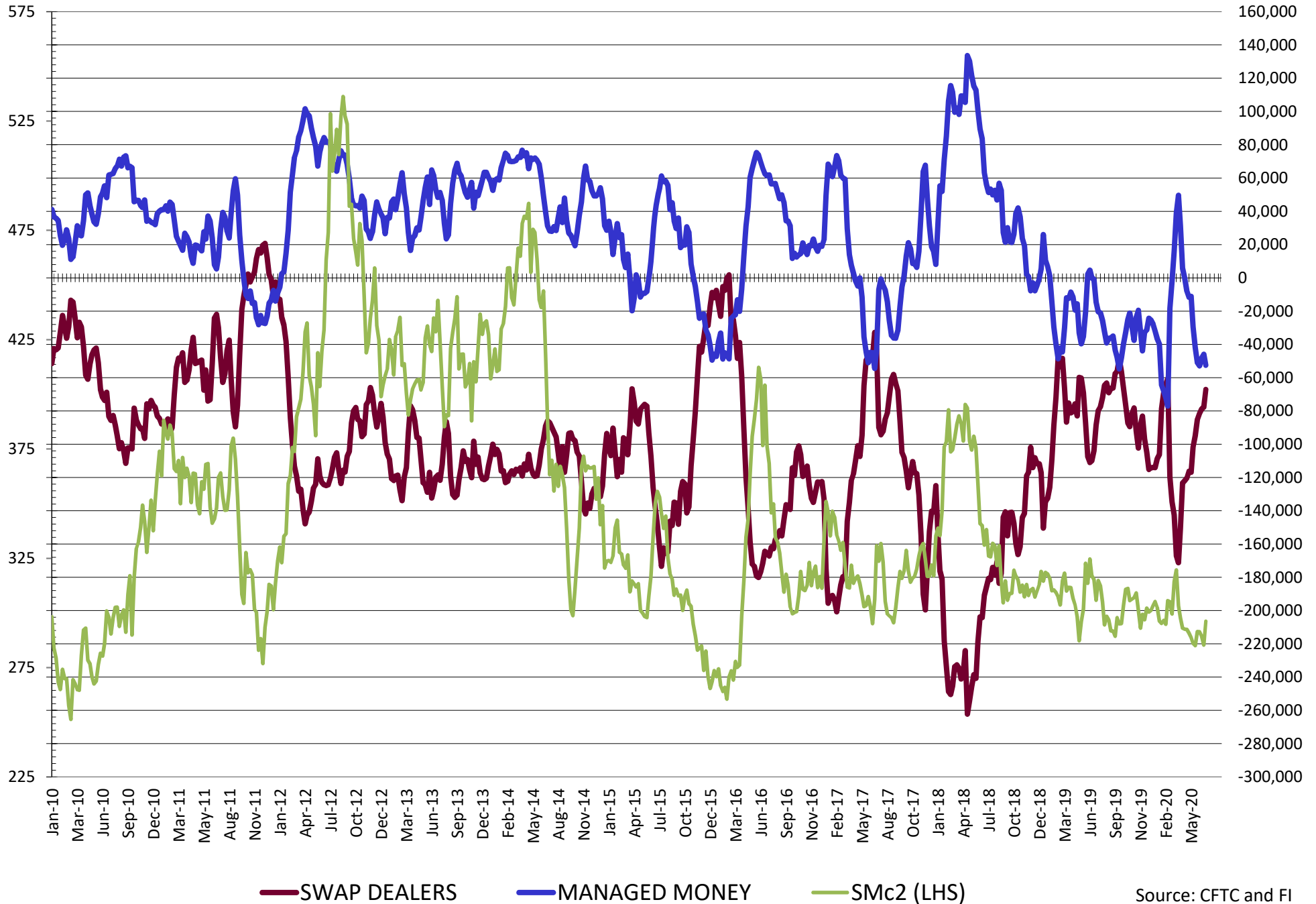
	PRODUCER / MERCHANT / PROCESSOR / USER				(INDEX/ETF) SWAP DEALERS				(CTA/CPO/OTHER UNREGISTERED) MANAGED MONEY			
	30-Jun	23-Jun	16-Jun	9-Jun	30-Jun	23-Jun	16-Jun	9-Jun	30-Jun	23-Jun	16-Jun	9-Jun
	WHEAT											
Chicago	(56.6)	(48.0)	(66.2)	(75.1)	100.1	106.5	102.4	101.1	(38.8)	(48.2)	(30.3)	(25.4)
Kansas City	(6.3)	(4.3)	(12.1)	(22.8)	43.7	47.0	48.0	47.1	(36.7)	(37.3)	(27.5)	(18.7)
Minneapolis	10.9	5.8	9.1	11.0	2.1	1.9	2.0	2.1	(17.7)	(13.9)	(17.1)	(19.2)
All Wheat	(52.0)	(46.4)	(69.2)	(86.9)	145.9	155.4	152.4	150.3	(93.3)	(99.4)	(74.8)	(63.3)
CORN	(26.1)	23.5	10.8	21.4	195.1	185.8	184.9	195.6	(201.6)	(277.5)	(270.8)	(297.3)
OATS	(2.8)	(2.5)	(2.3)	(2.3)	0.1	0.1	0.1	0.1	1.5	1.3	1.1	1.2
SOYBEANS	(219.4)	(198.3)	(188.9)	(186.5)	117.7	118.3	123.8	127.8	67.8	44.3	21.2	20.4
SOY OIL	(104.0)	(101.6)	(97.0)	(98.6)	83.2	85.4	83.4	79.4	0.8	(0.7)	(4.8)	(0.1)
SOY MEAL	(67.1)	(77.7)	(78.8)	(81.5)	72.0	74.1	74.2	80.0	(52.5)	(46.0)	(48.2)	(53.0)
	TOTAL				OTHER REPORTABLE				NON REPORTABLE			
	OPEN INTEREST				SWAP DEALERS				MANAGED MONEY			
	30-Jun	23-Jun	16-Jun	9-Jun	30-Jun	23-Jun	16-Jun	9-Jun	30-Jun	23-Jun	16-Jun	9-Jun
WHEAT												
Chicago	484,999	570,036	538,242	501,935	9.0	3.3	10.9	12.2	(13.7)	(13.6)	(16.8)	(12.8)
Kansas City	249,999	265,741	254,969	244,743	(1.6)	(4.0)	(6.2)	(4.0)	0.9	(1.3)	(2.2)	(1.6)
Minneapolis	63,073	61,943	67,835	71,930	2.5	3.0	3.5	3.4	2.2	3.2	2.5	2.7
All Wheat	798,071	897,720	861,046	818,608	9.9	2.2	8.2	11.6	(10.6)	(11.7)	(16.5)	(11.7)
CORN	1,926,269	2,034,732	2,012,716	1,938,786	49.5	46.7	40.9	40.2	(16.9)	21.4	21.4	21.4
OATS	4,623	4,852	4,900	5,380	0.7	0.7	0.5	0.7	0.5	0.4	0.5	0.3
SOYBEANS	949,644	1,045,355	1,063,884	1,044,618	27.2	24.0	28.7	25.0	6.6	11.7	15.2	13.4
SOY OIL	457,565	506,222	508,744	518,021	11.5	9.1	10.7	9.1	8.4	7.8	7.7	10.2
SOY MEAL	480,264	502,157	498,341	494,752	25.3	25.3	26.3	27.4	22.3	24.3	26.6	27.1

SOURCE: CFTC & FI

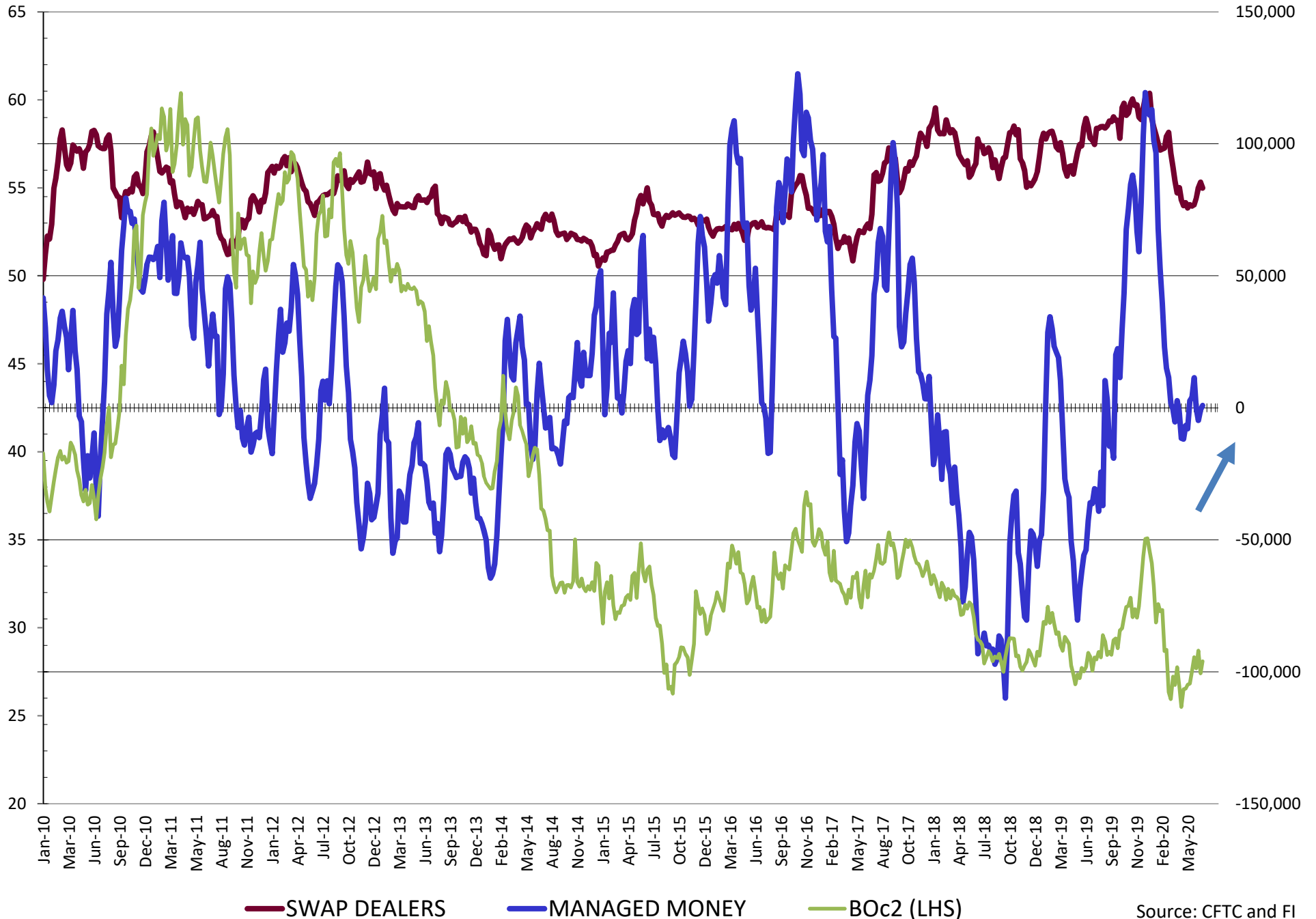
NET POSITION FUTURES AND OPTIONS OF SWAP AND MANAGED FUNDS IN SOYBEANS



NET POSITION FUTURES AND OPTIONS OF SWAP AND MANAGED FUNDS IN SOYBEAN MEAL

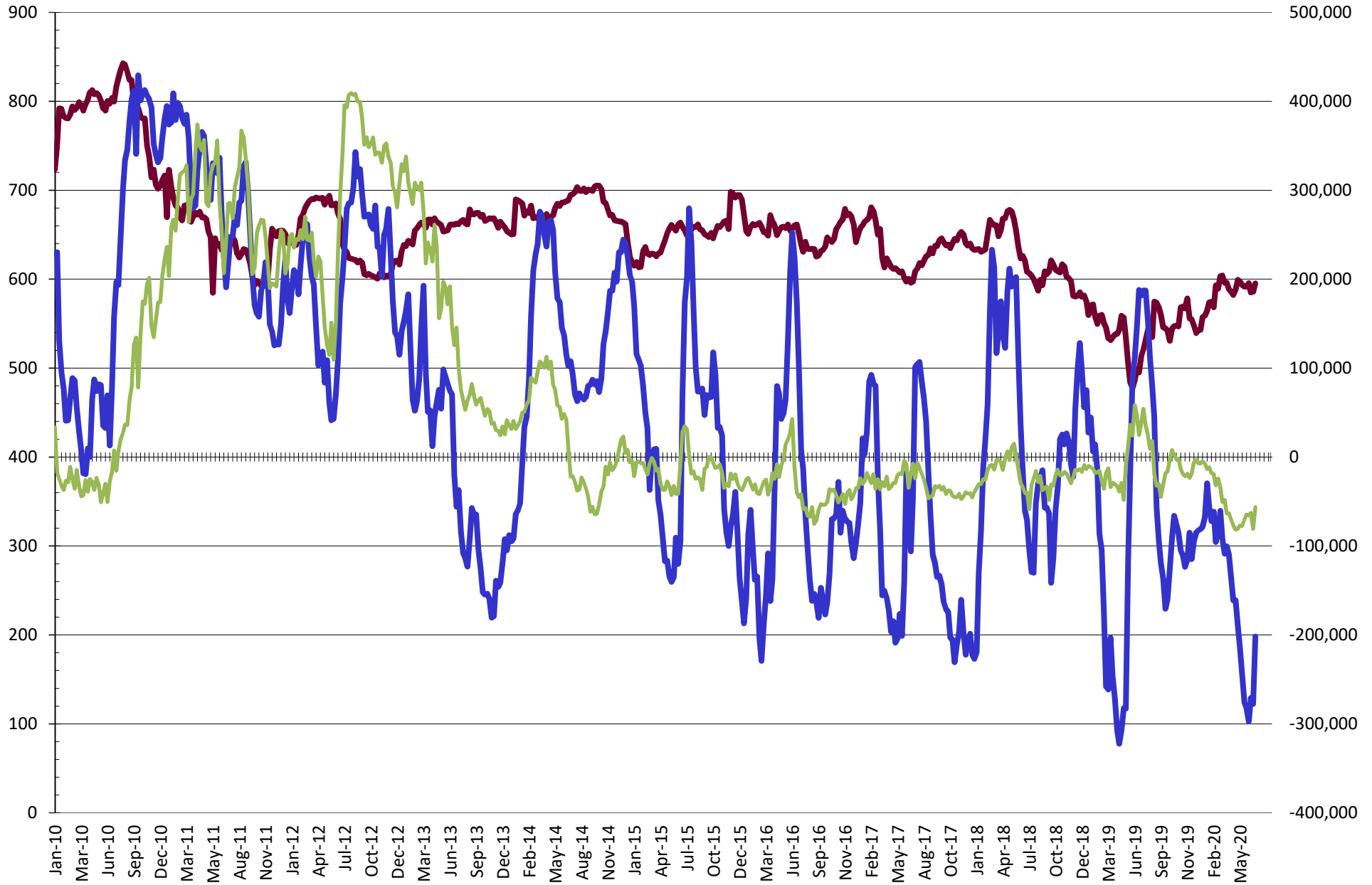


NET POSITION FUTURES AND OPTIONS OF SWAP AND MANAGED FUNDS IN SOYBEAN OIL



Source: CFTC and FI
7/6/2020

NET POSITION FUTURES AND OPTIONS OF SWAP AND MANAGED FUNDS IN CORN

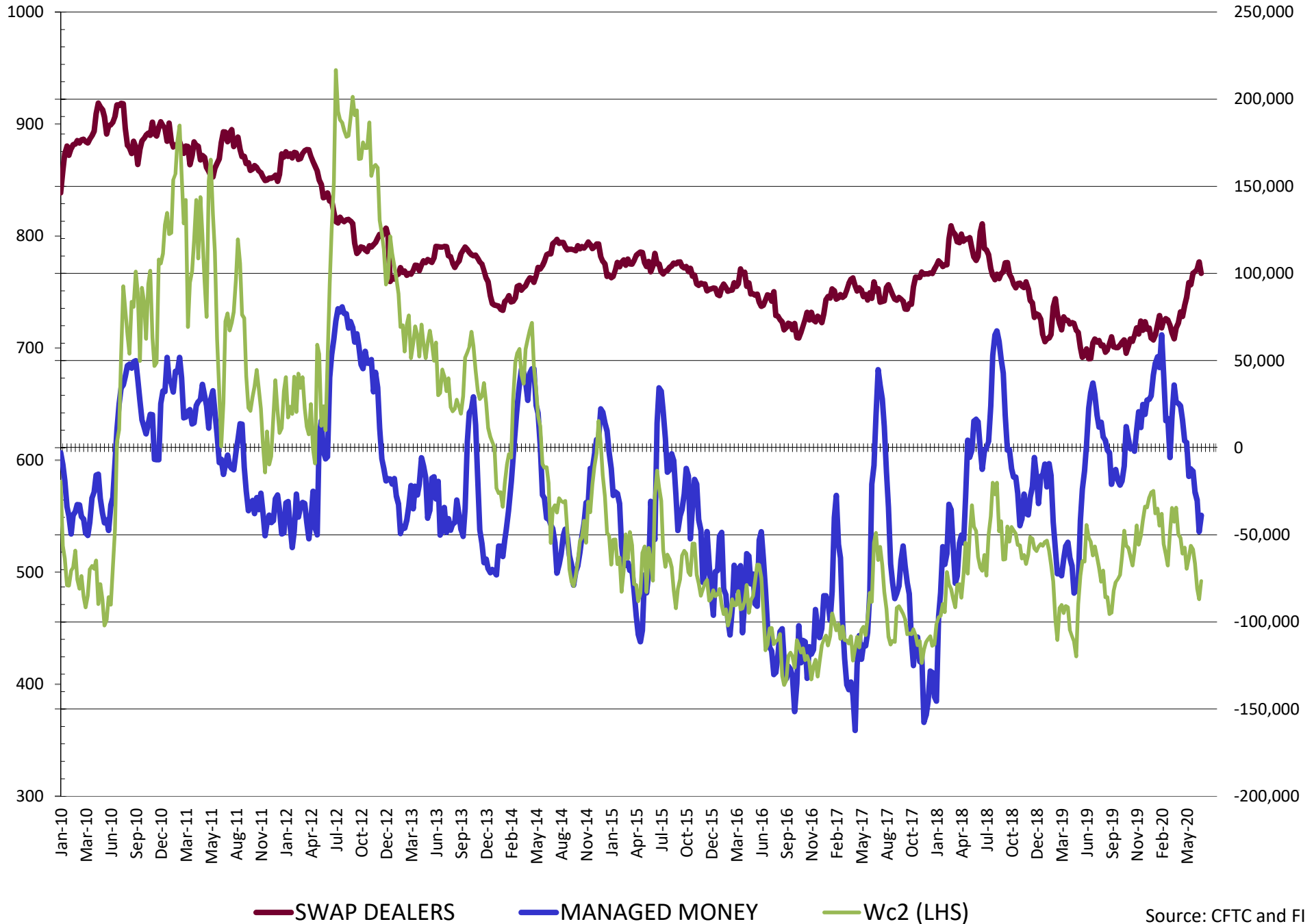


— SWAP DEALERS

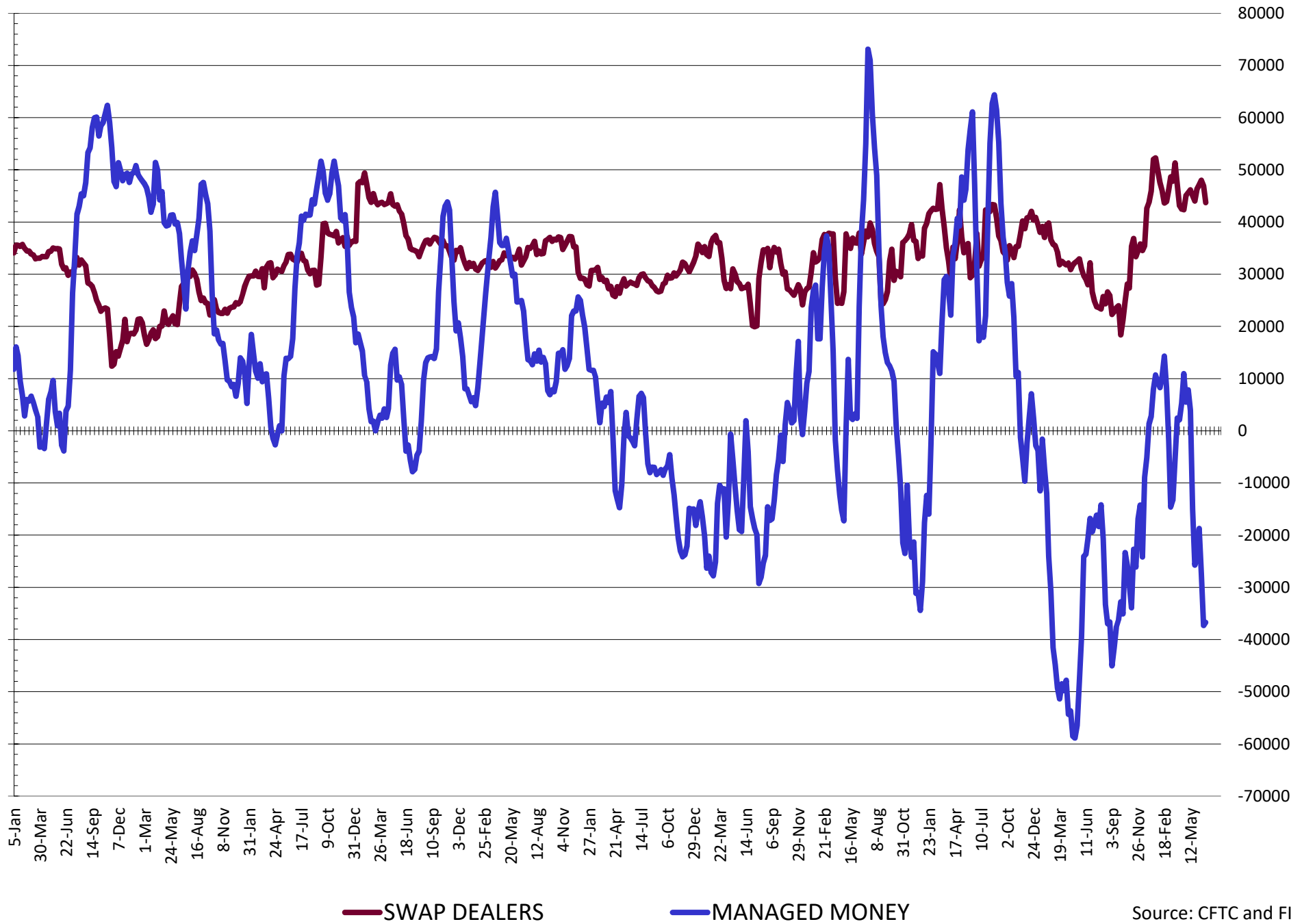
— MANAGED MONEY

— Cc2 (LHS)

NET POSITION FUTURES AND OPTIONS OF SWAP AND MANAGED FUNDS IN CHICAGO WHEAT

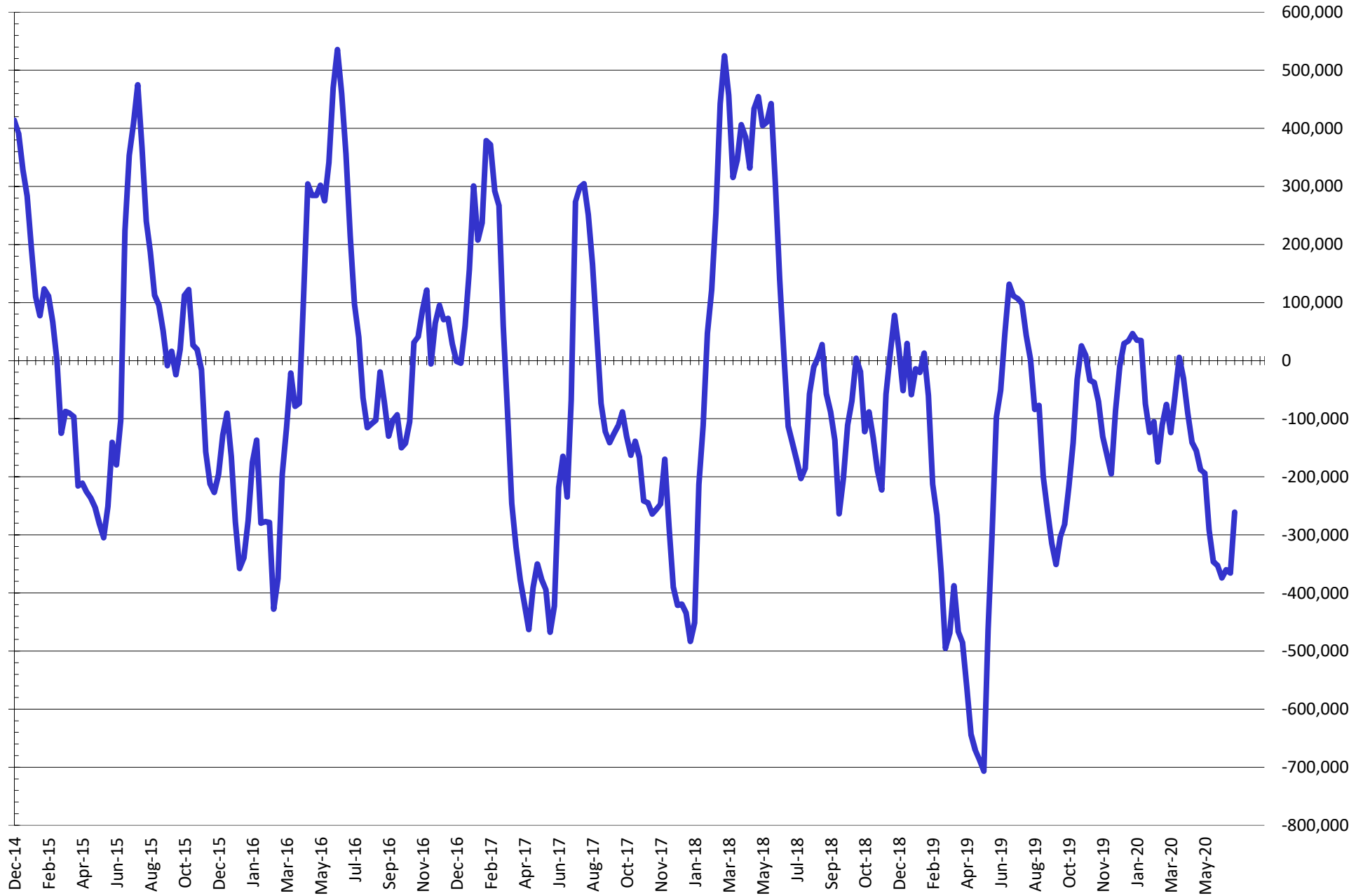


NET POSITION FUTURES AND OPTIONS OF SWAP DEALERS AND MANAGED FUNDS IN KANSAS WHEAT



Source: CFTC and FI
7/6/2020

NET POSITION FUTURES AND OPTIONS OF SWAP AND MANAGED FUNDS IN COMBINED SRW, HRW, CORN, SOYBEANS, SOYMEAL AND SOYOIL



— Net Managed Money

Source: CFTC and FI
7/6/2020

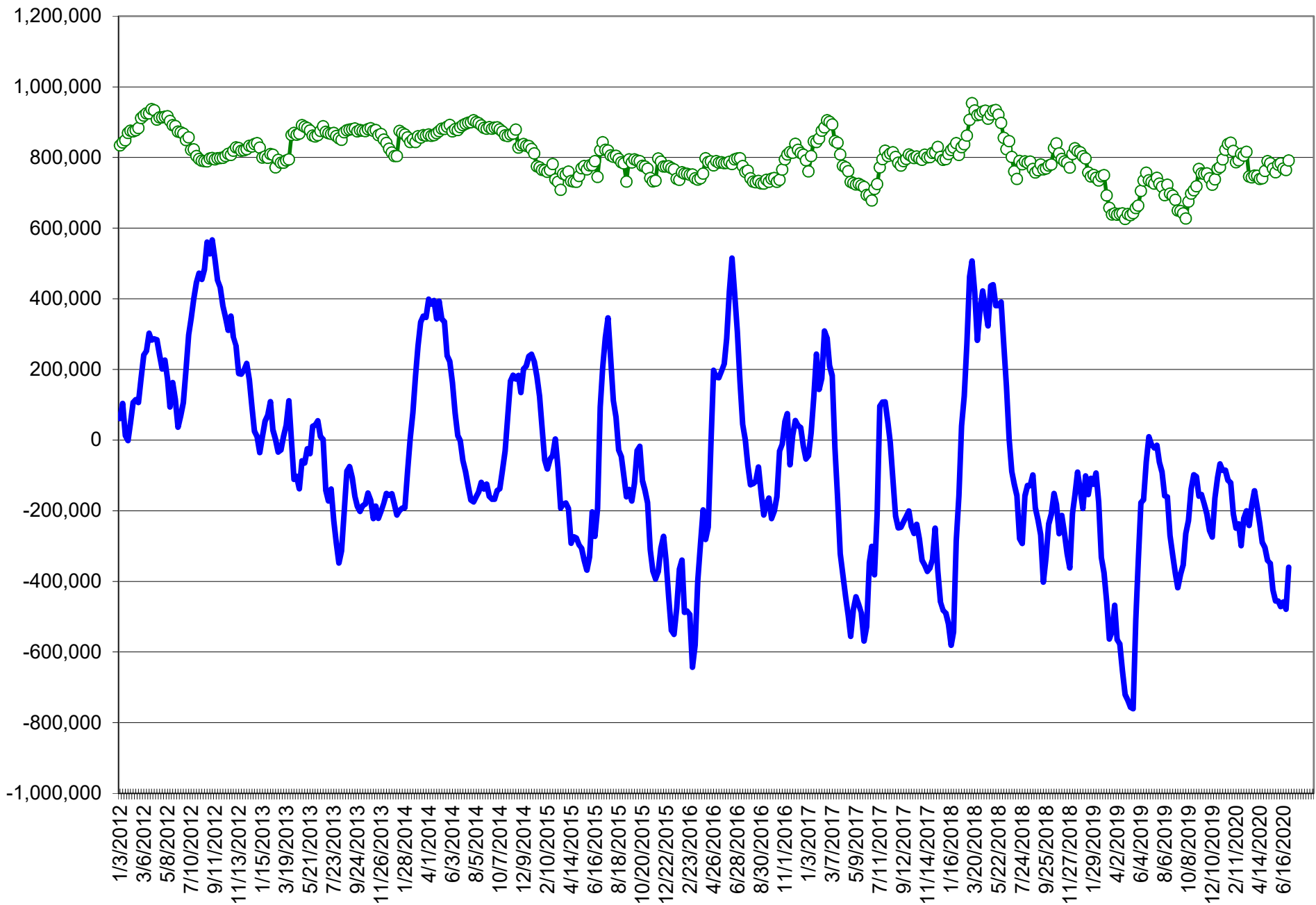
COMMITMENT OF TRADERS
FUTURES & OPTIONS NET POSITIONS (INDEX BROKEN OUT)
AS OF 06/30/2020
(IN THOUSAND CONTRACTS)

	COMMERCIAL				(FUND) NON COMMERCIAL				(SPEC) NON-REPORTABLE			
	30-Jun	23-Jun	16-Jun	9-Jun	30-Jun	23-Jun	16-Jun	9-Jun	30-Jun	23-Jun	16-Jun	9-Jun
	WHEAT											
Chicago	(53.4)	(39.7)	(59.1)	(70.9)	(59.7)	(75.3)	(49.9)	(43.0)	(13.7)	(13.6)	(16.8)	(12.8)
Kansas City	(11.1)	(5.0)	(12.2)	(23.6)	(43.7)	(47.8)	(41.4)	(33.3)	0.9	(1.3)	(2.2)	(1.6)
Minneapolis	-	-	-	-	-	-	-	-	-	-	-	-
All Wheat	(64.5)	(44.7)	(71.2)	(94.5)	(103.3)	(123.1)	(91.2)	(76.3)	(12.8)	(14.9)	(19.0)	(14.5)
CORN	(39.2)	12.4	(1.4)	13.6	(242.9)	(320.5)	(310.0)	(332.3)	(16.9)	21.4	34.2	40.2
OATS	-	-	-	-	-	-	-	-	-	-	-	-
SOYBEANS	(212.7)	(180.5)	(181.5)	(180.1)	44.4	18.4	2.1	(3.3)	6.6	11.7	15.2	13.4
SOY OIL	(81.3)	(74.5)	(70.6)	(74.7)	(11.0)	(14.7)	(19.6)	(18.6)	8.4	7.8	7.7	10.2
SOY MEAL	(41.6)	(48.5)	(50.6)	(52.4)	(47.0)	(38.8)	(39.8)	(41.1)	22.3	24.3	26.6	27.1

	TOTAL OPEN INTEREST				(INDEX) COMMERCIAL INDEX TRADERS				(INDEX) % NET OF TOTAL OPEN INTEREST			
	30-Jun	23-Jun	16-Jun	9-Jun	30-Jun	23-Jun	16-Jun	9-Jun	30-Jun	23-Jun	16-Jun	9-Jun
	WHEAT											
Chicago	484,999	570,036	538,242	501,935	126.8	128.6	125.7	126.8	26.1%	22.6%	23.4%	25.3%
Kansas City	249,999	265,741	254,969	244,743	53.9	54.1	55.7	58.5	21.6%	20.4%	21.9%	23.9%
Minneapolis	-	-	-	-	-	-	-	-	-	-	-	-
All Wheat	734,998	835,777	793,211	746,678	180.7	182.8	181.4	185.3	24.6%	21.9%	22.9%	24.8%
CORN	1,926,269	2,034,732	2,012,716	1,938,786	299.0	286.8	277.1	278.5	15.5%	14.1%	13.8%	14.4%
OATS	-	-	-	-	-	-	-	-	-	-	-	-
SOYBEANS	949,644	1,045,355	1,063,884	1,044,618	161.7	150.3	164.2	170.1	17.0%	14.4%	15.4%	16.3%
SOY OIL	457,565	506,222	508,744	518,021	83.9	81.4	82.4	83.1	18.3%	16.1%	16.2%	16.0%
SOY MEAL	480,264	502,157	498,341	494,752	66.3	63.0	63.8	66.4	13.8%	12.6%	12.8%	13.4%

SOURCE: CFTC & FI

NET POSITION FUTURES AND OPTIONS OF SPECULATORS AND INDEX FUNDS IN COMBINED SRW, HRW, CORN, SOYBEANS, SOYMEAL AND SOYOIL



Source: CFTC and FI

○ Net Index

— Net Speculator

Traditional Daily Estimate of Funds 6/30/20

	(Neg)-"Short"	Pos-"Long"			
Actual less Est.	29.6	7.9	(1.0)	(11.6)	8.7
	Corn	Bean	Chi. Wheat	Meal	Oil
Act	(157.4)	122.9	(14.6)	(14.8)	10.2
1-Jul	35.0	11.0	7.0	7.0	2.0
2-Jul	(20.0)	(3.0)	(7.0)	0.0	(2.0)
3-Jul					
6-Jul	13.0	8.0	0.0	2.0	5.0
7-Jul					
FI Est. of Futures Only 6/30/20	(129.4)	138.9	(14.6)	(5.8)	15.2
FI Est. Futures & Options	(124.1)	111.1	(29.8)	(18.2)	17.3
Futures only record long	498.2	260.4	86.5	167.5	160.2
	2/1/2011	6/27/2017	8/7/2018	5/1/2018	11/1/2016
Futures only record short	(235.0)	(118.3)	(130.0)	(49.5)	(69.8)
	6/9/2020	4/30/2019	4/25/2017	3/1/2016	9/18/2018
Futures and options record net long	458.5	259.8	64.8	132.1	159.2
	9/28/2010	5/1/2012	8/7/2012	5/1/2018	1/1/2016
Futures and options record net short	(270.6)	(132.0)	(143.3)	(64.1)	(77.8)
	4/26/2019	4/30/2019	4/25/2017	3/1/2016	9/18/2018

Managed Money Daily Estimate of Funds 6/30/20

	Corn	Bean	Chi. Wheat	Meal	Oil
Latest CFTC Fut. Only	(211.7)	63.4	(37.6)	(51.9)	0.8
Latest CFTC F&O	(201.6)	67.8	(38.8)	(52.5)	0.8
FI Est. Managed Fut. Only	(184)	79	(38)	(43)	6
FI Est. Managed Money F&O	(174)	84	(39)	(43)	6

Index Funds Latest Positions (as of last Tuesday)

Index Futures & Options	299.0	161.7	126.8	NA	83.9
Change From Previous Week	12.1	11.4	(1.8)	NA	2.5

Source: Reuters, CFTC & FI (FI est. are noted with latest date)

Disclaimer

TO CLIENTS/PROSPECTS OF FUTURES INTERNATIONAL, SEE RISK DISCLOSURE BELOW:

THIS COMMUNICATION IS CONVEYED AS A SOLICITATION FOR ENTERING INTO A DERIVATIVES TRANSACTION.

Any trading recommendations and market or other information to Customer by Futures International (FI), although based upon information obtained from sources believed by FI to be reliable may not be accurate and may be changed without notice to customer. FI makes no guarantee as to the accuracy or completeness of any of the information or recommendations furnished to Customer. Customer understands that FI, its managers, employees and/or affiliates may have a position in commodity futures, options or other derivatives which may not be consistent with the recommendations furnished by FI to Customer.

The risk of trading futures and options and other derivatives involves a substantial risk of loss and is not suitable for all persons. In purchasing an option, the risk is limited to the premium paid, and all commissions and fees involved with the trade. When an option is shorted or written, the writer of the option has unlimited risk with respect to the option written. The use of options strategies such as a straddles and strangles involve multiple option positions and may substantially increase the amount of commissions and fees paid to execute the strategy. Option prices do not necessarily move in tandem with cash or futures prices. Each person must consider whether a particular trade, combination of trades or strategy is suitable for that person's financial means and objectives.

This material may include discussions of seasonal patterns, however, futures prices have already factored in the seasonal aspects of supply and demand, and seasonal patterns are no indication of future market trends. Finally, past performance is not indicative of future results.

This communication may contain links to third party websites which are not under the control of FI and FI is not responsible for their content. Products and services are offered only in jurisdictions where solicitation and sale are lawful, and in accordance with applicable laws and regulations in each such jurisdiction.