

**USDA US Export Sales Results in 000 Metric Tons**

		<b>Actual 6/18/2020</b>	<b>Trade Estimates* 6/18/2020</b>	<b>Last Week Last Week</b>	<b>Year Ago 6/20/2019</b>
<b>Beans</b>	2019-20	<b>601.9</b>	400-900	2017-18 538.1	168.2
	2020-21	<b>560.7</b>	400-1000	2019-20 1382.1	319.6
<b>Meal</b>	2019-20	<b>70.2</b>	100-250	Sales 124.0	Sales 28.7
	2020-21	<b>12.0</b>	0-50		
	Shipments	<b>297.2</b>	NA	Shipments 200.8	Shipments 107.3
<b>Oil</b>	2019-20	<b>20.5</b>	5-30	Sales 6.4	Sales 19.2
	2020-21	<b>0.0</b>	0-5		
	Shipments	<b>52.2</b>	NA	Shipments 1.7	Shipments 8.7
<b>Corn</b>	2019-20	<b>461.7</b>	300-800	2017-18 357.8	294.9
	2020-21	<b>77.0</b>	100-300	2019-20 114.8	110.1
<b>Wheat</b>	2020-21	<b>518.7</b>	250-650	2020-21 504.8	612.1
				n/c 0.0	0.0

Source: FI & USDA \*Reuters estimates

n/c= New Crop

**USDA Export Sales Estimates/Results in 000 tons**

	ESTIMATED 6/18/2020		ACTUAL This Week		6/11/2020 Last Week		6/20/2019 Year Ago		
<b>Beans</b>	19/20	450-650	19/20	<b>601.9</b>	19/20	538.1	18/19	168.2	
	n/c	500-750	n/c	<b>560.7</b>	n/c	1,382.1	n/c	319.6	
			Sales to China 172.5		Sales to China 320.0		Sales to China 79.6		
<b>Meal</b>	Shipped		<b>Shipped</b>		Shipped		Shipped		
	19-20	100-200 150-300	19/20	<b>70.2</b>	<b>297.2</b>	19/20	124.0 200.8	18/19	28.7 107.3
	n/c	0-50	n/c	<b>12.0</b>			58.0	n/c	41.0
<b>Oil</b>	Shipped		<b>Shipped</b>		Shipped		Shipped		
	19-20	5-15 5-15	19/20	<b>20.5</b>	<b>52.2</b>	19/20	6.4 1.7	18/19	19.2 8.7
	n/c	0-5	n/c	<b>0.0</b>			0.0	n/c	0.0
		Sales to China 0.0		Sales to China 0.0		Sales to China 0.0			
<b>Corn</b>	19/20	500-800	19/20	<b>461.7</b>	19/20	357.8	18/19	294.9	
	n/c	100-300	n/c	<b>77.0</b>	n/c	114.8	n/c	110.1	
			Sales to China 66.1		Sales to China 3.1		Sales to China (1.4)		
<b>Wheat</b>	20/21	400-600	20/21	<b>518.7</b>	19/20	504.8	19/20	612.1	
					n/c		n/c	0.0	

o/c=Old Crop, n/c= New Crop Source: Futures International and USDA

US crop-year to date export sales					% sold from USDA's export projection				
		Current	Last Year	YOY	YOY	2019-20	2018-19	2017-18	2016-17
2019-20	<b>Soybeans mil bu</b>	1646	1749	-103	-5.9%	98.3%	100.1%	97.0%	100.2%
2019-20	<b>SoyOil MT</b>	1187	785	401	51.1%	102.6%	89.2%	84.0%	84.8%
2019-20	<b>SoyMeal MT</b>	10920	11257	-336	-3.0%	89.5%	91.5%	89.5%	95.4%
2019-20	<b>Corn mil bu</b>	1652	1919	-267	-13.9%	93.1%	92.9%	92.3%	94.6%
2020-21	<b>Wheat mil bu</b>	252	255	-4	-1.4%	2020-21 26.5%	2019-20 26.3%	2018-19 21.5%	2017-18 30.5%

Source: Futures International and USDA

# EXPORT SALES SITUATION

## SOYBEANS

(million bushels)

		2019-20	2018-19	2017-18	2016-17	2015-16	2014-15	2013-14	2012-13	2011-12	2010-11	2009-10	2008-09	2007-08	2006-07	2005-06	2004-05	2003-04	2002-03	2001-02
<b>Weekly Sales Total</b>																				
	<b>New Crop Sales</b>	277.9	570.9	561.4	762.3	452.1	800.8	789.1	738.3	522.9	623.8	583.1	309.4	284.6	237.7	145.7	219.3	296.3	213.2	206.2
<b>Weeks remaining</b>	5-Sep	43.1	25.5	59.2	65.3	62.3	36.2	17.6	23.1	16.3	31.2	30.5	16.9	12.7	27.2	0.5	2.7	1.5	4.0	2.5
11	12-Sep	63.5	33.7	85.9	37.4	33.5	53.9	33.9	23.8	14.9	24.6	18.0	15.1	18.9	28.0	21.9	23.3	21.7	23.1	20.9
	19-Sep	38.1	32.0	109.6	32.2	48.4	94.3	103.5	29.4	38.0	39.8	42.3	22.5	27.4	31.8	27.6	36.9	27.7	25.9	15.3
	26-Sep	76.3	55.9	37.3	62.2	92.1	31.9	31.6	47.6	25.8	63.8	50.9	17.3	24.5	43.9	24.8	27.8	25.8	9.8	35.4
	3-Oct	76.9	16.2	64.2	80.1	47.2	33.9	34.2	18.4	24.7	34.8	16.6	22.1	20.2	39.9	19.9	35.3	17.4	19.0	40.0
	10-Oct	58.8	10.8	46.9	52.1	54.3	34.4	0.0	19.2	21.9	39.6	24.0	37.8	27.6	31.9	25.2	36.0	42.2	20.6	48.5
	17-Oct	17.5	7.8	78.2	71.0	74.6	79.6	0.0	19.2	8.4	74.1	36.3	28.8	17.0	23.0	32.7	36.3	36.3	44.4	39.1
	24-Oct	34.7	14.5	72.3	72.4	76.7	48.7	174.2	27.2	7.7	74.4	25.4	53.5	27.2	23.5	30.9	34.0	59.7	60.0	32.5
	31-Oct	66.4	14.3	42.6	92.4	24.1	59.2	36.6	6.8	22.2	58.3	19.2	32.9	22.6	28.2	28.0	17.6	68.8	29.1	55.2
	7-Nov	46.0	17.3	40.6	34.5	47.7	39.5	28.6	20.6	27.4	29.7	46.8	17.6	47.6	27.8	21.3	24.2	33.7	29.3	27.3
	14-Nov	55.7	25.0	31.9	51.7	66.0	17.7	47.8	16.2	33.9	37.0	49.6	29.1	66.4	29.5	22.0	35.3	26.0	43.0	51.6
	21-Nov	61.1	23.1	34.6	69.8	43.1	54.6	51.7	11.7	18.0	24.8	41.7	28.7	41.1	26.8	7.7	49.1	31.7	36.0	36.8
	28-Nov	25.1	32.7	74.1	48.8	32.3	43.3	29.6	42.0	28.3	49.3	26.6	13.2	29.5	24.5	12.2	15.0	9.1	25.5	31.4
	5-Dec	38.6	29.1	53.4	51.1	53.4	29.8	40.7	48.5	17.2	23.4	34.1	29.8	35.7	33.2	35.0	16.4	13.2	48.8	29.6
	12-Dec	52.6	104.2	64.0	73.8	32.6	25.6	12.4	22.8	24.0	3.1	34.3	32.8	32.1	27.3	15.2	31.4	7.5	38.4	36.4
	19-Dec	27.1	87.9	35.8	66.6	76.0	23.4	26.5	-0.3	24.3	28.1	43.9	21.5	25.1	38.1	30.5	42.5	53.5	41.3	20.9
	26-Dec	12.1	38.6	20.4	35.8	17.6	22.4	33.5	16.0	10.3	24.3	29.4	18.8	5.2	12.5	32.7	32.0	20.0	9.3	12.7
	2-Jan	13.1	-22.5	22.3	3.2	23.5	33.5	5.7	11.8	15.9	18.0	26.7	19.5	4.4	21.7	17.0	23.9	5.7	14.0	19.1
	9-Jan	26.1	NA	45.6	12.8	41.4	41.6	25.5	56.7	36.4	15.4	27.7	50.0	35.5	40.3	16.5	39.2	17.1	50.3	41.6
	16-Jan	29.0	NA	19.8	36.0	36.2	0.5	23.4	11.3	17.1	26.9	34.2	48.7	24.4	22.6	47.0	31.6	0.5	21.0	27.7
	23-Jan	17.3	NA	10.4	19.8	23.8	32.6	13.3	14.2	9.0	28.7	24.7	19.3	17.9	24.9	19.2	19.1	-4.8	25.3	26.5
	30-Jan	25.9	NA	24.5	20.1	-1.6	18.0	16.0	29.9	22.2	37.9	14.0	12.4	38.1	29.5	16.4	20.2	13.5	20.2	11.2
	6-Feb	23.7	NA	20.7	16.9	24.5	27.4	6.4	-4.0	13.5	0.8	11.5	39.3	12.1	14.0	19.0	20.2	5.9	16.1	4.3
	13-Feb	18.2	240.0	-6.8	32.7	20.8	18.6	0.4	-4.4	39.8	18.9	7.5	40.2	23.2	24.8	19.5	13.9	7.3	14.6	14.5
	20-Feb	12.5	80.7	28.7	12.4	12.1	16.9	12.0	22.5	20.2	4.9	8.8	12.5	21.4	15.3	18.5	15.7	-0.2	11.1	12.9
	27-Feb	12.7	11.4	89.4	15.7	16.2	18.4	28.4	9.6	37.3	13.3	6.7	5.7	7.4	20.8	13.5	23.4	-1.0	12.3	24.9
	5-Mar	11.1	70.2	43.8	15.4	17.5	6.2	2.4	23.0	22.4	15.1	-4.3	30.8	9.5	16.6	18.5	25.1	9.7	23.5	-11.9
	12-Mar	23.2	14.7	25.1	17.3	22.9	12.6	7.4	4.0	13.1	5.4	7.9	5.3	16.1	19.2	14.0	23.0	1.6	12.4	8.1
	19-Mar	33.2	6.7	8.9	21.9	15.1	18.6	0.4	2.4	17.3	9.7	10.0	15.8	13.6	9.9	8.6	12.3	7.9	12.0	9.1
	26-Mar	35.2	72.4	38.8	25.0	10.0	1.0	2.4	14.4	15.0	5.3	6.6	22.0	6.8	9.5	8.1	11.0	6.4	7.6	2.7
	2-Apr	19.2	9.9	52.7	15.3	15.4	-6.5	2.9	11.7	16.9	2.8	7.6	15.9	21.5	5.0	13.0	12.3	3.8	22.3	14.8
	9-Apr	9.0	14.0	35.4	14.8	16.8	11.5	0.7	11.3	11.5	4.8	5.8	29.7	17.5	10.4	12.6	4.4	6.6	9.6	11.5
	16-Apr	12.7	21.9	10.8	5.0	15.0	3.8	0.0	-7.6	34.0	12.8	11.3	22.7	13.8	15.5	7.1	5.8	4.6	6.3	8.0
	23-Apr	39.6	9.1	12.5	26.9	8.3	15.9	-0.6	-4.0	22.0	5.3	3.7	30.7	11.4	-2.6	4.1	9.1	1.8	7.9	13.1
	30-Apr	24.0	-7.9	10.2	11.7	30.0	12.5	1.5	7.1	17.1	0.8	10.4	24.0	1.5	7.5	6.7	12.0	4.7	1.4	9.5
	7-May	24.1	11.2	10.4	11.9	7.8	5.0	2.7	0.6	22.6	2.2	9.7	14.8	7.4	8.2	14.3	6.1	-1.2	5.2	12.9
	14-May	44.3	17.3	-5.1	13.1	20.4	6.1	6.0	6.7	29.4	6.1	17.6	25.7	14.1	3.1	12.2	13.9	0.7	4.0	12.2
	21-May	23.7	14.3	10.0	17.4	16.8	11.8	2.2	-4.0	8.8	6.0	6.4	8.7	9.0	12.7	8.6	9.7	-0.5	9.6	12.7
	28-May	18.2	16.3	6.1	22.4	11.4	4.8	1.5	1.8	8.1	3.0	5.0	-0.9	11.0	7.4	12.7	7.2	0.8	4.1	9.7
	4-Jun	36.9	7.0	19.1	5.8	27.9	6.0	3.2	1.2	15.6	4.4	15.5	-2.2	10.0	8.1	6.6	3.2	0.2	14.1	17.5
	11-Jun	19.8	18.6	11.1	12.5	30.0	4.9	3.6	1.9	5.2	6.6	-5.0	5.4	6.3	13.2	14.1	6.7	3.6	-1.7	8.8
	18-Jun	22.1	3.8	13.2	4.1	24.3	4.4	11.7	0.5	14.8	-1.2	11.3	1.0	-9.9	8.8	7.4	5.4	3.5	8.5	10.1
	25-Jun																			
<b>Crop year to date sales</b>		1646.1	1748.9	2070.2	2169.4	1820.2	1855.0	1670.8	1349.2	1371.5	1538.2	1433.9	1244.6	1109.3	1101.3	889.0	1089.2	890.2	1052.3	1073.9
<b>Average weekly sales</b>																				
	rate to reach proj total	2.7	-0.1	5.9	-0.3	11.2	-1.2	-3.0	-3.0	-0.6	-3.4	6.0	3.2	4.6	1.4	4.7	0.7	-0.3	-0.8	-0.9
<b>Proj./Actual export total</b>		1675	1748	2134	2166	1942	1842	1638	1317	1365	1501	1499	1279	1159	1116	940	1097	887	1044	1064
<b>YTD sales as % of total</b>		98.3	100.1	97.0	100.2	93.7	100.7	102.0	102.4	100.5	102.5	95.7	97.3	95.7	98.7	94.6	99.3	100.4	100.8	100.9
<b>Sold as of around Sep 1 %</b>		16.6	32.7	26.3	35.2	23.3	43.5	48.2	56.1	38.3	41.6	38.9	24.2	24.6	21.3	15.5	20.0	33.4	20.4	19.4

Source: Futures International and USDA

# EXPORT SALES SITUATION

## SOYMEAL

(000 metric tons)

Weekly Sales Total	2019-20	2018-19	2017-18	2016-17	2015-16	2014-15	2013-14	2012-13	2011-12	2010-11	2009-10	2008-09	2007-08	2006-07	2005-06	2004-05	2003-04	2002-03	2001-02
New Crop Sales	3,043.5	3,599.5	3,206.0	2,962.9	3,686.7	5,318.9	2,679.3	3,203.3	1,431.4	2,079.9	3,014.9	1,673.6	1,648.7	1,117.6	1,051.0	1,586.8	1,677.7	1,398.4	1,612.1
Weeks remaining	3-Oct	348.2	106.0	398.0	225.8	707.6	1,189.2	143.5	558.6	423.1	466.1	29.2	266.0	611.2	59.9	177.6	456.0	269.1	562.9
14	10-Oct	104.1	296.0	146.2	264.4	195.9	0.0	173.1	348.9	245.7	115.7	242.3	100.4	151.4	119.8	230.5	291.2	112.8	220.2
	17-Oct	203.0	142.8	301.0	218.7	23.0	0.0	73.2	74.1	153.9	176.2	263.5	244.4	101.0	194.2	182.9	96.0	103.1	186.6
	24-Oct	317.4	225.0	149.9	246.2	147.8	805.2	194.5	120.8	165.6	116.7	130.2	203.9	57.7	304.7	24.4	65.4	218.5	231.3
	31-Oct	255.1	212.9	437.4	208.2	-123.7	287.8	234.6	291.4	365.3	224.1	107.4	211.0	265.9	79.8	145.8	589.6	228.7	78.9
	7-Nov	345.3	432.3	163.1	224.5	224.1	21.3	283.2	201.5	198.0	357.5	124.4	153.2	132.7	204.7	97.2	-131.5	87.7	161.9
	14-Nov	229.7	379.8	150.4	254.9	265.7	116.0	365.1	150.2	292.7	225.2	92.3	133.1	245.9	143.2	125.2	74.8	222.2	153.2
	21-Nov	189.5	176.6	222.5	77.5	-22.3	307.9	429.9	135.5	133.8	107.4	59.7	145.2	214.1	76.1	110.6	102.1	210.6	144.2
	28-Nov	287.3	166.4	200.0	228.7	226.8	120.4	238.2	170.0	193.4	232.3	106.0	163.4	116.5	272.4	82.8	-4.7	130.5	173.4
	5-Dec	50.5	455.4	139.2	108.6	88.9	82.7	390.8	103.7	171.8	191.4	18.5	96.0	205.5	120.7	167.2	46.3	110.8	134.2
	12-Dec	300.0	184.1	251.9	252.5	146.8	77.1	124.7	142.0	113.5	254.2	62.2	111.8	115.4	84.1	113.4	129.5	84.7	142.4
	19-Dec	427.4	288.3	83.3	78.9	206.7	83.3	53.8	51.1	219.3	286.9	145.7	73.3	108.7	81.8	29.7	86.2	145.5	238.6
	26-Dec	40.7	109.0	119.1	46.5	157.9	123.9	118.2	144.4	24.5	61.8	43.3	49.1	71.8	46.2	113.7	17.6	89.5	180.9
	2-Jan	124.8	209.3	269.8	64.7	37.3	62.8	236.1	48.0	26.2	356.7	19.7	77.9	101.5	68.9	70.7	-30.0	12.1	4.7
	9-Jan	375.2	NA	281.8	276.8	280.6	72.1	234.7	218.0	181.2	232.2	416.2	74.4	93.8	221.2	158.0	104.8	55.6	192.1
	16-Jan	641.9	NA	223.1	365.0	200.8	284.5	241.4	141.7	124.2	-30.0	254.1	210.8	162.4	34.4	189.1	47.1	79.1	214.7
	23-Jan	438.8	NA	474.8	347.7	186.3	296.5	68.3	196.3	74.7	177.9	134.9	201.7	225.8	160.5	196.6	94.4	-4.1	203.3
	30-Jan	212.7	NA	160.8	71.8	189.4	296.3	283.7	132.4	161.9	182.7	102.7	184.0	365.8	135.3	133.3	44.0	21.8	-50.1
	6-Feb	234.3	NA	210.0	223.0	111.4	189.4	18.7	236.1	80.1	107.7	242.1	196.7	106.6	170.3	152.9	173.5	-93.7	75.1
	13-Feb	1,468.8	131.9	139.5	171.7	316.6	227.5	250.3	216.0	108.3	81.9	142.6	48.6	201.6	77.3	52.8	80.8	76.0	195.7
	20-Feb	113.6	139.0	301.9	132.1	-6.4	115.9	119.3	40.0	148.1	85.7	145.6	102.8	0.8	89.6	52.4	-127.7	44.6	105.4
	27-Feb	230.5	200.6	389.5	46.6	130.2	232.8	51.7	111.0	156.7	1.9	117.1	75.6	66.1	78.0	121.7	-3.4	28.9	141.1
	5-Mar	226.0	173.3	127.0	83.4	101.3	160.0	143.4	156.1	51.4	92.5	147.4	147.8	277.0	93.5	90.4	95.6	93.9	129.3
	12-Mar	97.5	194.6	65.9	468.7	204.0	242.9	137.2	87.4	210.9	189.5	33.4	175.8	17.5	115.2	149.9	33.0	152.7	82.7
	19-Mar	84.3	184.1	228.6	211.6	224.3	158.5	92.6	132.9	79.7	68.1	140.8	156.8	105.2	179.0	195.5	42.8	127.3	-63.7
	26-Mar	190.3	414.3	158.7	23.3	214.1	307.8	227.1	174.0	46.2	211.9	106.9	90.0	121.7	37.1	33.5	39.4	87.9	-7.1
	2-Apr	152.1	317.4	135.0	196.8	46.0	179.6	266.0	33.2	171.6	85.0	85.8	129.6	172.5	85.3	77.9	37.6	25.4	65.3
	9-Apr	295.3	164.9	112.0	131.6	130.4	36.6	193.3	300.7	130.1	94.3	167.2	176.1	103.9	142.6	95.6	13.7	154.3	80.0
	16-Apr	329.1	223.7	103.6	209.3	107.4	186.3	93.2	221.1	121.1	57.4	108.3	140.4	151.3	18.4	58.5	48.5	21.6	48.3
	23-Apr	79.2	246.0	137.1	152.7	134.7	140.9	34.4	59.0	78.7	137.8	293.0	59.0	119.1	124.0	110.3	70.2	104.9	48.3
	30-Apr	150.8	90.9	113.6	115.3	136.8	75.0	82.8	138.4	61.0	68.3	135.4	122.2	68.6	61.8	51.1	22.5	-11.9	132.4
	7-May	196.1	376.0	125.0	73.0	45.2	84.5	123.6	114.3	10.0	32.5	260.1	115.6	86.9	157.3	66.1	15.6	72.2	98.3
	14-May	188.0	239.5	123.6	169.5	103.0	186.3	149.2	144.6	137.5	47.4	210.8	151.4	117.7	87.3	78.2	43.6	24.3	71.6
	21-May	183.9	140.7	84.9	68.6	123.7	83.7	134.2	33.2	34.9	115.4	193.9	110.0	83.6	133.4	54.6	49.6	58.6	140.0
	28-May	110.8	131.2	166.8	44.3	53.2	65.8	97.7	75.0	60.5	49.7	142.4	264.1	127.3	72.8	84.8	26.4	94.0	57.2
	4-Jun	112.5	74.6	86.6	84.4	129.7	59.5	26.6	116.8	80.1	84.1	70.2	153.6	68.7	182.7	53.7	50.8	57.9	53.1
	11-Jun	109.6	115.1	38.0	162.5	96.1	54.7	9.2	258.7	9.5	35.1	93.2	94.4	57.7	84.0	109.7	19.8	64.3	118.9
	18-Jun	28.7	146.3	45.1	115.5	106.3	66.3	116.3	229.6	108.3	71.6	79.6	34.6	55.6	109.5	175.9	27.3	74.1	167.2
	25-Jun																		
Crop year to date sales	10920.3	11256.6	11375.2	10022.7	9816.0	10934.3	9730.6	9449.5	7235.3	7281.7	8947.2	6659.3	6980.2	6341.4	5666.3	5434.8	4110.7	5410.5	6834.4
Average weekly sales																			
***rate to reach proj total		75.0	96.7	34.8	74.2	69.1	53.7	49.7	115.7	69.0	84.9	75.7	101.3	118.7	118.0	88.3	41.8	3.6	-1.7
Proj./Actual export total***	12202	12296	12715	10505	10845	11891	10474	10139	8839	8238	10124	7708	8384	7987	7301	6659	4690	5460	6811
YTD sales as % of total	89.5	91.5	89.5	95.4	90.5	92.0	92.9	93.2	81.9	88.4	88.4	86.4	83.3	79.4	77.6	81.6	87.6	99.1	100.3

\*\*\*Does not include USDA's Forecast on Flour Meal (MT)

Source: Futures International and USDA

# EXPORT SALES SITUATION

## SOYOIL

(000 metric tons)

Weekly Sales Total	2019-20	2018-19	2017-18	2016-17	2015-16	2014-15	2013-14	2012-13	2011-12	2010-11	2009-10	2008-09	2007-08	2006-07	2005-06	2004-05	2003-04	2002-03	2001-02
New Crop Sales	194.1	138.3	74.7	259.5	137.4	95.4	26.6	144.7	38.9	633.7	388.3	67.1	14.3	92.8	79.7	121.3	118.0	149.9	46.8
Weeks remaining																			
3-Oct	1.2	11.4	10.9	16.8	79.8	69.8	38.1	57.8	36.6	26.7	195.9	79.8	58.2	6.0	3.8	17.5	42.4	67.5	36.4
10-Oct	4.0	26.6	27.4	0.3	53.2	46.4	0.0	24.5	6.1	13.7	24.0	16.1	26.4	6.2	-1.3	8.2	2.4	2.5	36.0
17-Oct	3.4	26.3	27.9	24.5	14.8	10.6	0.0	12.0	4.1	5.5	23.3	3.3	24.3	2.1	6.3	12.3	5.9	9.0	11.2
24-Oct	30.0	22.2	27.0	21.2	82.1	15.8	14.5	28.5	0.7	-32.6	9.2	5.2	14.8	5.8	4.7	4.1	9.5	9.1	28.4
31-Oct	3.8	22.4	15.9	16.3	36.2	13.9	65.9	36.7	21.7	6.0	6.9	1.0	7.2	-0.1	41.2	0.3	-19.2	26.3	36.4
7-Nov	30.6	15.1	2.7	14.4	28.9	15.6	7.2	21.0	2.1	60.0	5.8	6.3	29.7	18.0	0.9	13.6	8.1	1.6	-8.2
14-Nov	39.1	40.0	4.2	26.1	37.7	19.6	95.8	124.1	2.7	-0.7	12.4	7.9	65.1	0.3	11.6	11.9	13.0	11.6	2.2
21-Nov	14.9	9.2	11.6	54.5	12.8	35.6	18.8	121.5	8.9	32.1	19.2	17.1	31.8	31.5	3.4	9.4	6.9	11.3	6.5
28-Nov	10.8	21.1	21.0	13.4	5.3	25.1	1.4	19.0	18.5	51.3	19.0	2.7	40.9	48.4	14.5	2.3	-0.8	8.1	22.0
5-Dec	30.0	5.9	14.5	40.3	13.8	14.7	2.3	30.5	5.5	128.2	12.3	0.4	42.1	15.6	0.3	11.3	1.7	14.3	10.8
12-Dec	28.0	35.7	24.2	15.1	10.2	38.8	27.0	-5.8	14.8	21.1	20.7	1.5	8.5	6.3	0.4	18.2	-3.5	4.0	20.8
19-Dec	37.4	13.7	44.2	18.9	39.8	3.9	83.9	17.2	2.3	1.6	46.7	5.4	13.2	61.0	7.5	17.3	18.1	23.1	34.4
26-Dec	-1.9	16.0	17.9	30.9	-5.7	24.7	-18.9	31.3	7.3	13.0	1.5	-6.7	5.7	4.5	0.6	6.9	1.7	10.3	16.4
2-Jan	2.6	2.2	-1.6	7.3	3.6	30.2	33.6	10.9	1.1	7.5	3.5	3.5	28.2	-1.3	0.3	10.0	3.3	3.5	14.9
9-Jan	36.2	NA	27.9	41.5	17.7	29.4	16.9	12.9	18.7	60.1	50.0	17.0	35.7	15.5	1.1	43.0	3.6	-1.2	35.7
16-Jan	55.6	NA	11.8	49.5	19.3	17.1	20.2	26.3	2.5	13.1	10.4	7.5	58.8	2.3	4.4	16.7	0.7	72.9	60.4
23-Jan	29.4	NA	58.8	12.2	9.1	10.6	6.7	20.1	6.7	5.0	46.0	21.5	97.5	37.3	20.8	-5.1	2.6	35.9	27.5
30-Jan	52.9	NA	7.8	35.3	12.8	15.1	26.0	25.5	22.2	38.4	58.8	10.1	40.9	2.9	0.6	6.5	2.5	27.3	38.9
6-Feb	39.1	NA	24.4	9.9	3.8	16.1	53.3	6.6	21.1	14.8	44.8	45.9	24.0	2.3	-3.3	4.4	3.2	16.8	13.1
13-Feb	42.0	92.1	42.9	12.7	12.7	10.9	11.7	28.9	25.2	1.0	46.7	46.1	26.9	1.8	4.3	7.2	2.7	23.4	26.6
20-Feb	5.6	10.6	16.6	28.7	3.2	14.2	1.6	4.8	4.8	16.0	40.2	8.5	25.7	-8.9	0.2	7.4	-4.1	46.1	26.1
27-Feb	43.5	8.1	34.0	8.4	0.9	5.6	16.9	-19.7	15.5	2.1	15.9	13.6	6.8	8.0	22.5	1.5	-2.1	32.8	23.8
5-Mar	24.7	14.0	31.6	-35.8	35.1	4.6	7.1	6.0	5.1	14.2	-9.4	24.8	29.1	2.2	17.5	-3.0	4.8	-7.0	12.2
12-Mar	18.9	5.6	36.5	15.3	17.5	8.1	2.0	19.6	38.1	-9.8	18.4	-8.0	23.8	10.1	4.0	1.7	2.1	14.7	8.0
19-Mar	55.9	11.7	34.6	12.5	24.4	22.4	4.0	12.6	3.5	14.1	13.0	48.6	42.0	-7.8	9.4	6.9	6.3	17.4	21.6
26-Mar	67.0	36.7	43.5	22.4	18.2	20.5	6.2	-4.6	-3.5	-1.1	14.0	62.0	55.8	13.8	-0.9	7.5	-2.9	17.3	-1.7
2-Apr	25.1	33.8	22.0	18.6	-7.6	11.9	3.4	7.7	2.1	8.8	6.8	6.9	17.1	3.4	0.7	1.8	-3.2	19.5	0.2
9-Apr	21.2	24.2	28.0	33.2	2.1	4.5	5.5	8.2	23.9	0.6	13.5	14.7	7.3	0.9	2.8	7.0	2.9	1.9	0.0
16-Apr	21.4	19.6	11.2	-2.0	10.7	4.4	5.7	1.7	0.7	24.0	-1.9	57.8	25.1	16.6	8.5	6.4	1.0	-15.3	3.7
23-Apr	29.8	7.3	44.5	10.6	9.6	7.3	0.5	1.1	14.9	3.9	2.0	31.1	8.9	3.5	1.2	3.3	0.3	8.5	3.0
30-Apr	18.9	16.4	45.4	29.0	10.0	15.6	7.7	0.9	30.1	2.0	10.3	34.6	11.9	-5.9	1.9	5.2	0.1	9.1	19.4
7-May	6.7	10.8	10.2	14.9	16.7	7.3	1.8	-5.3	8.1	2.6	3.2	20.2	10.8	3.5	-1.4	2.0	0.2	8.6	50.0
14-May	62.1	9.1	17.7	10.0	89.5	9.9	41.3	9.6	9.4	0.5	3.5	3.5	46.4	2.6	9.5	-0.5	0.5	9.6	6.8
21-May	56.7	35.1	3.0	22.8	32.9	9.2	15.0	2.9	12.7	29.2	12.9	5.3	-0.3	7.6	1.1	2.0	2.5	9.7	33.4
28-May	9.4	15.4	10.0	17.6	44.7	32.7	5.1	30.5	13.1	10.1	3.7	3.9	9.1	2.5	0.5	5.6	5.7	2.9	17.5
4-Jun	9.5	5.1	-0.2	30.3	14.5	3.4	71.8	13.2	6.8	10.7	12.2	6.8	15.1	21.3	3.0	-0.1	10.1	2.0	9.8
11-Jun	6.4	4.4	16.0	13.3	13.8	-0.1	10.3	0.7	20.4	6.0	87.1	21.6	0.9	20.6	19.0	6.1	4.5	7.9	36.7
18-Jun	20.5	19.2	30.5	12.6	14.0	9.5	1.9	2.9	8.3	23.6	45.5	6.9	20.3	29.1	-3.2	5.9	0.2	20.7	2.3
25-Jun																			
Crop year to date sales	1186.5	785.3	931.4	983.0	975.8	750.3	739.0	887.1	481.7	1257.2	1336.4	721.7	1050.0	482.2	297.8	404.0	251.5	733.6	790.1
Average weekly sales																			
rate to reach proj total	-2.2	6.9	12.8	12.7	3.0	11.8	8.1	6.8	13.2	15.1	13.5	19.7	19.5	26.6	16.3	14.2	12.5	21.1	25.4
Proj./Actual export total (MT)	1157	880	1108	1159	1017	914	851	982	664	1466	1524	995	1320	851	523	601	425	1026	1143
YTD sales as % of total	102.6	89.2	84.0	84.8	95.9	82.1	86.8	90.4	72.5	85.7	87.7	72.6	79.5	56.6	56.9	67.3	59.2	71.5	69.1

Source: Futures International and USDA

# EXPORT SALES SITUATION

## CORN

(million bushels)

Weekly Sales Total	2019-20	2018-19	2017-18	2016-17	2015-16	2014-15	2013-14	2012-13	2011-12	2010-11	2009-10	2008-09	2007-08	2006-07	2005-06	2004-05	2003-04	2002-03	2001-02
New Crop Sales	260.8	565.7	360.6	597.1	323.5	458.7	490.2	385.1	535.9	579.0	455.4	455.8	608.3	458.8	309.6	273.1	300.2	244.3	279.1
5-Sep	19.6	30.5	41.2	43.0	16.2	22.2	13.1	9.8	32.3	26.8	43.4	19.9	40.9	26.4	0.4	9.1	18.1	17.3	22.3
12-Sep	57.7	54.5	20.7	27.7	21.0	26.0	17.2	2.7	23.5	23.0	38.0	12.8	80.0	40.5	21.6	47.5	36.0	41.0	27.3
19-Sep	19.4	67.4	12.6	36.3	16.8	32.9	25.2	0.0	31.0	22.1	26.5	21.6	66.8	32.7	29.4	45.5	54.2	29.1	47.0
26-Sep	22.1	56.3	32.0	22.6	29.5	25.1	30.5	12.9	50.8	36.4	48.1	22.3	45.3	45.6	27.7	35.6	36.1	37.6	49.4
3-Oct	11.2	39.6	62.7	81.1	20.5	30.9	52.8	0.2	49.6	23.9	20.5	37.7	91.3	50.7	37.5	30.7	37.7	27.3	24.4
10-Oct	14.5	15.1	49.4	34.4	23.6	75.7	0.0	6.6	69.4	35.7	24.9	36.4	72.9	32.3	36.5	58.1	64.5	25.6	32.0
Weeks remaining	17-Oct	19.3	13.8	50.7	40.3	9.8	40.6	0.0	5.6	13.2	7.6	9.2	31.1	60.8	41.2	37.9	51.5	29.4	35.6
11	24-Oct	21.6	15.5	31.9	31.5	27.9	19.3	172.3	6.6	24.5	21.7	14.5	16.3	25.0	40.4	28.3	42.9	58.0	40.5
	31-Oct	19.2	27.6	93.1	58.0	21.9	18.8	63.0	6.2	9.9	18.2	22.2	18.6	59.3	75.9	48.0	57.2	56.8	42.8
	7-Nov	22.9	35.1	37.4	48.6	24.4	19.9	47.4	4.1	8.0	22.6	19.2	14.0	53.7	54.9	34.8	32.7	29.5	31.8
	14-Nov	31.0	34.5	42.6	65.4	30.7	35.8	30.3	30.3	12.3	21.0	13.9	17.1	72.7	41.0	58.8	28.5	36.1	26.8
	21-Nov	31.8	49.9	23.6	66.5	80.2	37.2	39.6	9.3	11.0	32.4	48.2	18.3	72.5	40.2	51.2	63.1	45.4	25.6
	28-Nov	21.5	46.4	34.5	30.0	19.7	46.1	11.1	2.0	27.4	29.8	13.5	41.7	32.0	24.1	23.0	33.4	26.5	59.8
	5-Dec	34.4	35.6	34.1	58.9	43.1	37.9	18.1	10.2	19.9	26.4	33.4	36.6	45.5	55.1	27.3	36.0	40.9	34.8
	12-Dec	67.3	77.7	61.3	59.7	22.8	27.3	32.5	4.5	28.1	31.9	48.3	24.1	46.0	49.8	36.1	25.1	36.3	23.7
	19-Dec	24.6	66.9	49.0	49.3	31.6	67.1	55.7	4.1	12.6	35.7	62.7	21.7	56.0	45.4	28.6	37.5	26.7	35.1
	26-Dec	20.9	19.8	4.0	37.7	27.8	35.2	6.1	1.9	11.8	27.5	30.4	10.6	22.6	13.5	27.4	29.7	14.6	21.4
	2-Jan	6.4	18.1	17.2	16.9	10.0	15.3	3.6	0.5	12.7	14.5	14.4	10.3	26.4	46.3	18.1	16.9	16.5	4.5
	9-Jan	30.9	NA	74.3	23.8	26.3	32.2	32.3	15.5	29.9	17.3	12.9	8.5	93.3	56.1	24.8	25.9	33.0	36.1
	16-Jan	39.6	NA	56.9	53.8	45.6	86.0	27.3	5.5	37.7	35.6	62.4	42.8	62.8	39.1	48.1	35.8	39.3	49.1
	23-Jan	48.6	NA	72.9	53.9	32.2	42.1	72.4	7.4	35.9	16.3	35.5	43.6	74.3	31.4	84.9	30.0	30.5	29.2
	30-Jan	49.1	NA	69.7	45.0	44.5	33.3	66.9	6.6	27.3	45.9	36.3	45.8	40.5	54.2	11.6	38.6	29.3	54.7
	6-Feb	38.1	NA	77.7	38.3	15.9	39.5	50.0	8.9	39.6	43.6	29.3	60.8	36.7	54.6	63.5	39.2	45.4	41.5
	13-Feb	49.2	238.4	61.2	30.8	41.4	36.7	27.2	14.2	33.1	40.6	38.4	52.5	44.9	33.0	47.1	30.9	37.5	45.4
	20-Feb	34.0	48.8	69.0	29.3	36.8	28.2	33.1	11.9	27.2	59.1	15.8	17.7	23.7	12.5	58.4	35.8	38.9	31.7
	27-Feb	30.3	38.2	73.1	27.3	43.2	32.6	59.8	-2.0	17.5	42.5	30.0	31.2	25.5	46.8	23.9	32.0	14.7	15.7
	5-Mar	57.9	14.6	98.6	29.2	46.2	16.5	25.0	11.1	32.9	18.8	13.3	43.0	30.3	29.5	53.7	28.9	22.6	41.2
	12-Mar	35.6	33.7	57.9	49.4	48.3	19.8	29.4	3.6	33.9	40.8	29.4	17.3	29.5	25.2	40.5	39.7	51.7	42.9
	19-Mar	71.4	35.6	53.3	53.0	31.6	17.1	54.4	11.6	5.1	35.2	23.9	46.9	24.9	44.2	35.5	36.5	46.8	31.0
	26-Mar	42.3	21.2	35.4	28.2	31.1	16.0	37.8	13.9	36.9	75.4	31.8	49.3	27.7	21.6	40.9	44.9	27.3	37.7
	2-Apr	72.8	21.6	33.1	44.8	37.2	25.2	25.9	7.3	37.8	24.4	53.5	41.8	18.7	52.2	26.0	26.0	51.9	17.4
	9-Apr	35.7	37.3	43.0	29.1	44.7	23.2	21.2	15.8	11.8	33.4	39.6	34.2	34.2	31.6	32.1	36.0	48.1	34.9
	16-Apr	28.6	30.7	27.4	29.8	47.4	34.2	24.4	12.4	25.4	24.1	58.3	47.8	30.5	43.4	26.3	45.2	23.0	36.0
	23-Apr	53.4	23.1	40.2	38.9	85.1	32.8	36.9	13.0	52.4	13.7	48.4	48.2	21.7	24.2	30.8	19.4	36.4	45.1
	30-Apr	30.5	11.3	27.4	30.4	30.3	33.1	6.3	4.6	8.8	11.2	72.9	23.2	13.3	20.6	50.5	24.5	43.1	29.1
	7-May	42.2	21.8	38.8	10.9	43.5	14.6	13.5	8.7	13.4	17.1	32.2	36.9	21.5	59.6	43.5	54.7	19.9	57.7
	14-May	34.8	17.4	33.6	27.8	58.0	32.0	20.0	4.1	6.1	33.2	53.3	26.9	20.0	25.9	60.6	33.6	28.9	37.8
	21-May	16.8	35.7	39.1	18.0	54.4	25.8	22.7	3.4	7.4	28.6	40.6	29.8	18.8	26.6	44.7	21.7	49.7	44.5
	28-May	25.1	-0.3	33.0	16.2	51.9	18.3	21.7	4.2	9.9	18.6	7.8	23.8	20.9	14.8	45.5	29.3	16.2	16.5
	4-Jun	26.0	6.6	36.9	13.7	61.4	19.5	16.1	3.2	3.6	12.6	40.1	28.1	20.7	20.9	34.1	22.1	2.1	51.5
	11-Jun	14.1	1.5	6.5	23.6	35.8	24.7	4.3	5.3	6.7	11.6	42.9	30.2	13.5	32.6	57.7	25.0	23.4	41.1
	18-Jun	18.2	11.6	33.5	20.8	34.3	19.6	10.1	13.3	7.6	16.2	44.2	27.0	9.1	30.0	62.0	20.0	6.3	36.4
	25-Jun																		
Crop year to date sales	1651.7	1918.8	2251.3	2171.0	1827.5	1774.7	1847.2	706.0	1532.2	1752.2	1891.9	1695.8	2349.7	2044.4	1971.6	1650.8	1811.6	1463.8	1742.3
Average weekly sales																			
rate to reach proj total	11.4	13.5	17.2	11.3	6.8	8.5	6.7	2.2	1.0	7.5	8.1	14.1	8.0	7.4	15.0	15.4	8.1	11.4	15.0
Proj./Actual export total	1775	2065	2438	2294	1901	1867	1920	730	1543	1834	1980	1849	2437	2125	2134	1818	1900	1588	1905
YTD sales as % of total	93.1	92.9	92.3	94.6	96.1	95.1	96.2	96.7	99.3	95.5	95.6	91.7	96.4	96.2	92.4	90.8	95.3	92.2	91.5
Sold as of around Sep 1 %	14.7	27.4	14.8	26.0	17.0	24.6	25.5	52.8	34.7	31.6	23.0	24.7	25.0	21.6	14.5	15.0	15.8	15.4	14.7

Source: Futures International and USDA

## EXPORT SALES SITUATION

### ALL-WHEAT

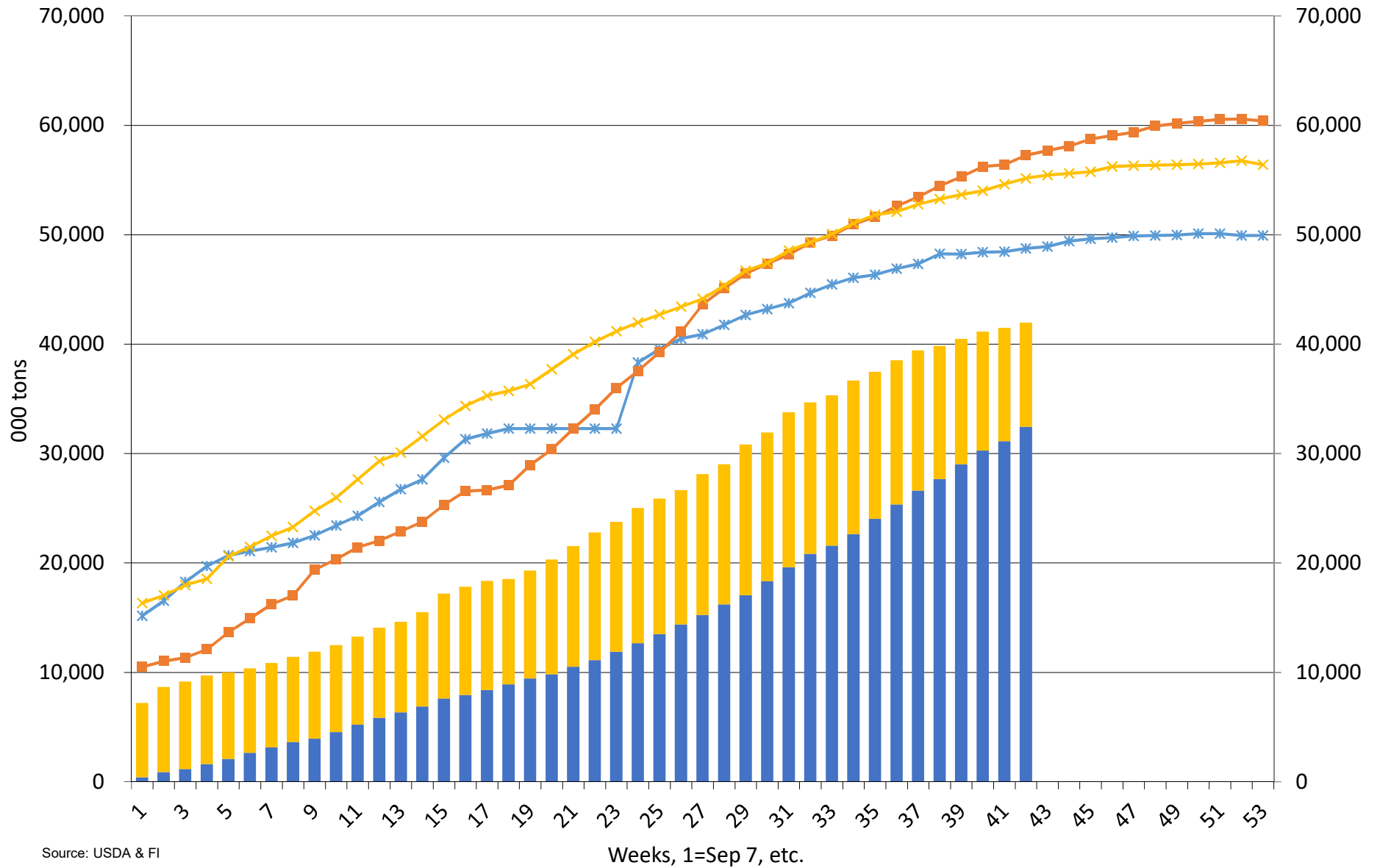
(million bushels)

Weekly Sales Total	2020-21	2019-20	2018-19	2017-18	2016-17	2015-16	2014-15	2013-14	2012-13	2011-12	2010-11	2009-10	2008-09	2007-08	2006-07	2005-06	2004-05	2003-04	2002-03	2001-02
New Crop Sales	204.2	213.9	152.7	225.5	200.6	160.1	219.3	256.5	185.8	243.2	148.6	115.7	263.9	159.2	134.1	134.1	208.4	125.1	112.6	111.0
4-Jun	9.9	12.0	11.1	16.9	8.2	13.8	20.9	15.7	15.9	16.7	4.8	12.4	12.3	15.2	16.9	12.1	10.7	10.2	11.0	7.5
Weeks remaining	11-Jun	18.5	6.9	17.0	13.7	28.0	11.6	13.7	15.9	24.3	35.3	9.9	19.8	19.9	11.6	18.8	21.7	21.7	7.6	13.0
48.85714286	18-Jun	19.1	22.5	20.7	19.9	17.0	16.0	13.2	26.9	11.9	20.0	26.5	13.5	18.3	22.9	19.9	21.6	15.9	19.0	16.4
	25-Jun																			
	2-Jul																			
	9-Jul																			
	16-Jul																			
	23-Jul																			
	30-Jul																			
	6-Aug																			
	13-Aug																			
	20-Aug																			
	27-Aug																			
	3-Sep																			
	10-Sep																			
	17-Sep																			
	24-Sep																			
	1-Oct																			
	8-Oct																			
	15-Oct																			
	22-Oct																			
Crop year to date sales	251.7	255.3	201.5	276.1	253.9	201.5	267.1	315.0	244.5	304.3	215.1	151.5	314.3	217.1	182.6	186.6	256.7	176.1	147.7	151.4
Average weekly sales																				
rate to reach proj total	14.3	14.6	15.0	12.9	16.3	11.8	12.2	17.6	15.7	15.3	22.0	14.9	14.3	21.4	14.8	16.7	16.6	20.1	14.4	16.6
Proj./Actual export total	950	970	936	906	1051	778	864	1176	1012	1051	1289	879	1015	1263	908	1003	1066	1158	850	962
YTD sales as % of total	26.5	26.3	21.5	30.5	24.2	25.9	30.9	26.8	24.2	29.0	16.7	17.2	31.0	17.2	20.1	18.6	24.1	15.2	17.4	15.7

Source: Futures International and USDA

Source: USDA and FI

## US Corn Current Crop-Year Commitments Thousand Tons, Sept-Aug Crop-Year

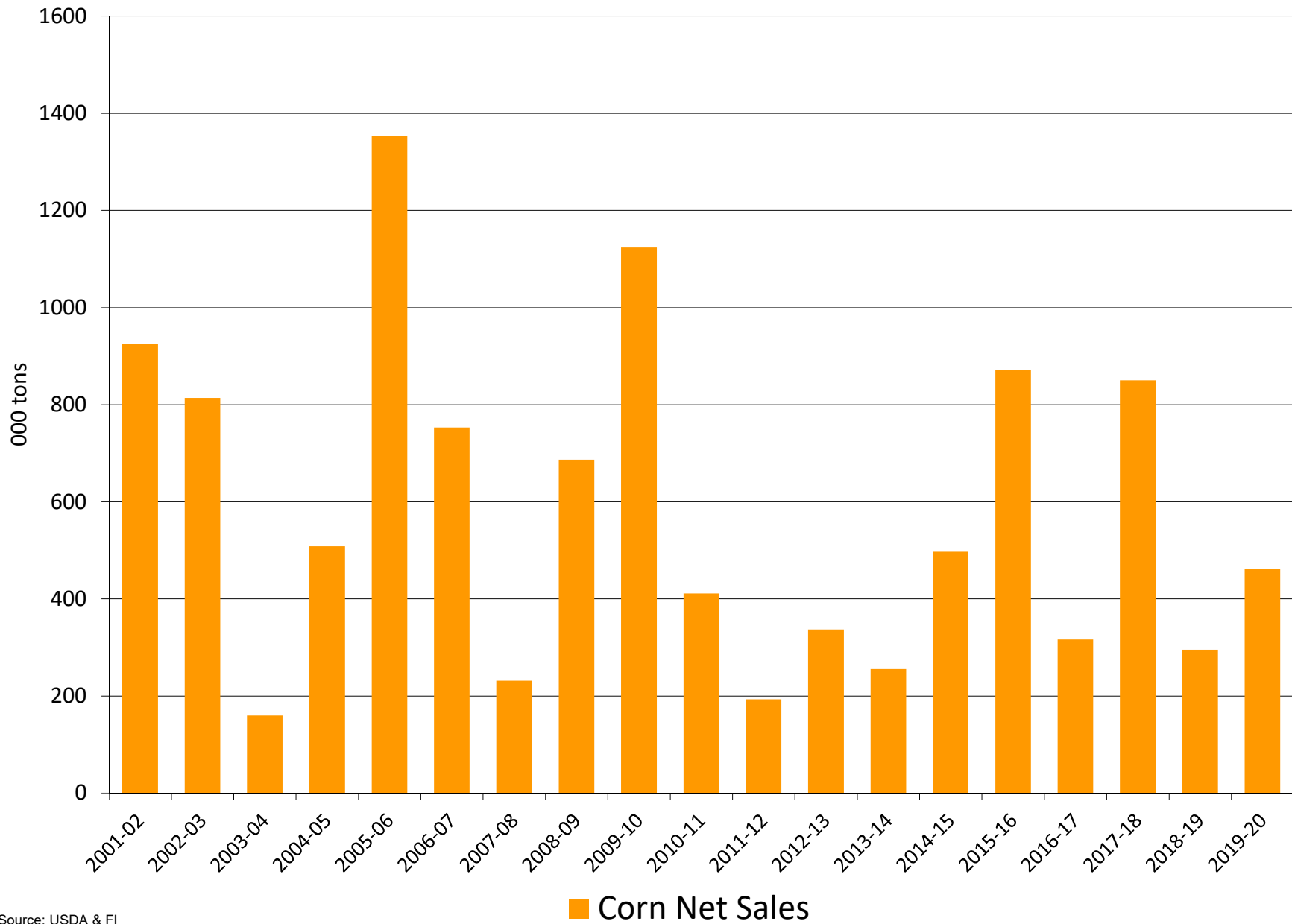


Source: USDA & FI

■ Accumulated Exports   ■ Outstanding Sales   \* 2018-19   ■ 2017-18   \* 2016-17

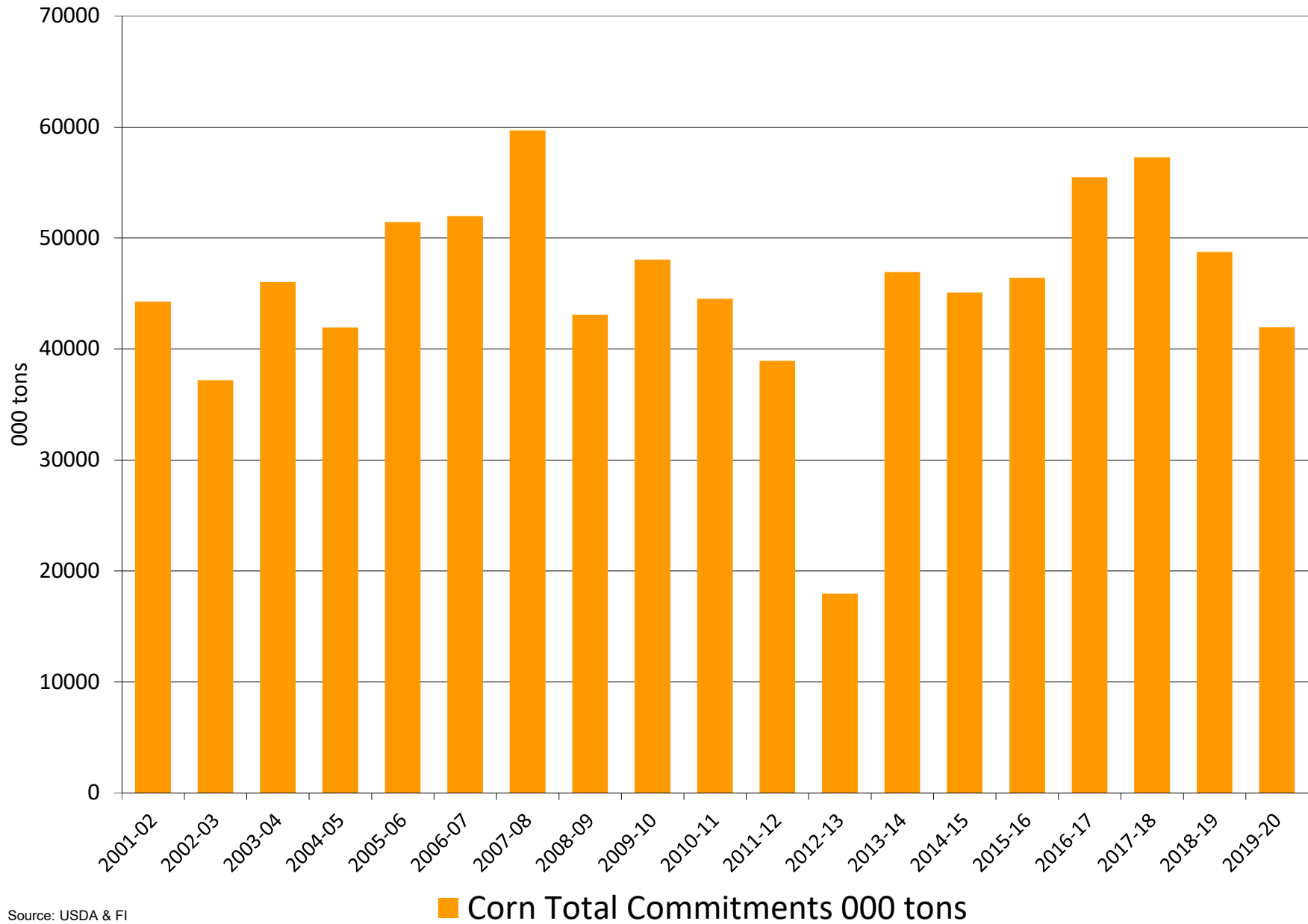


## US corn export sales for the week ending on or near 06/21/2020



Source: USDA & FI

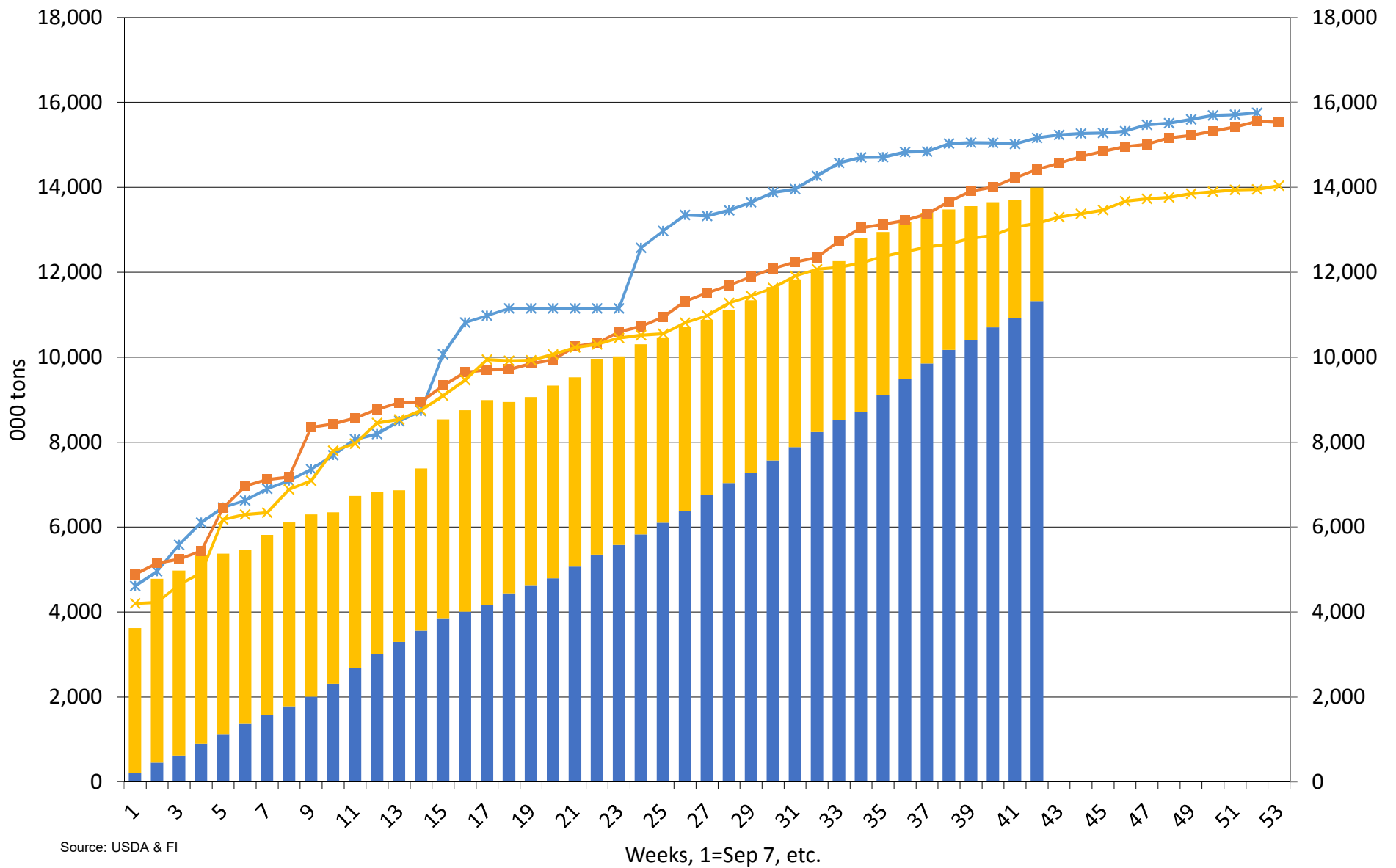
# US corn export commitments on or near 06/21/2020



Source: USDA & F1

# US Corn Current Crop-Year Commitments to Mexico

## Thousand Tons, Sept-Aug Crop-Year

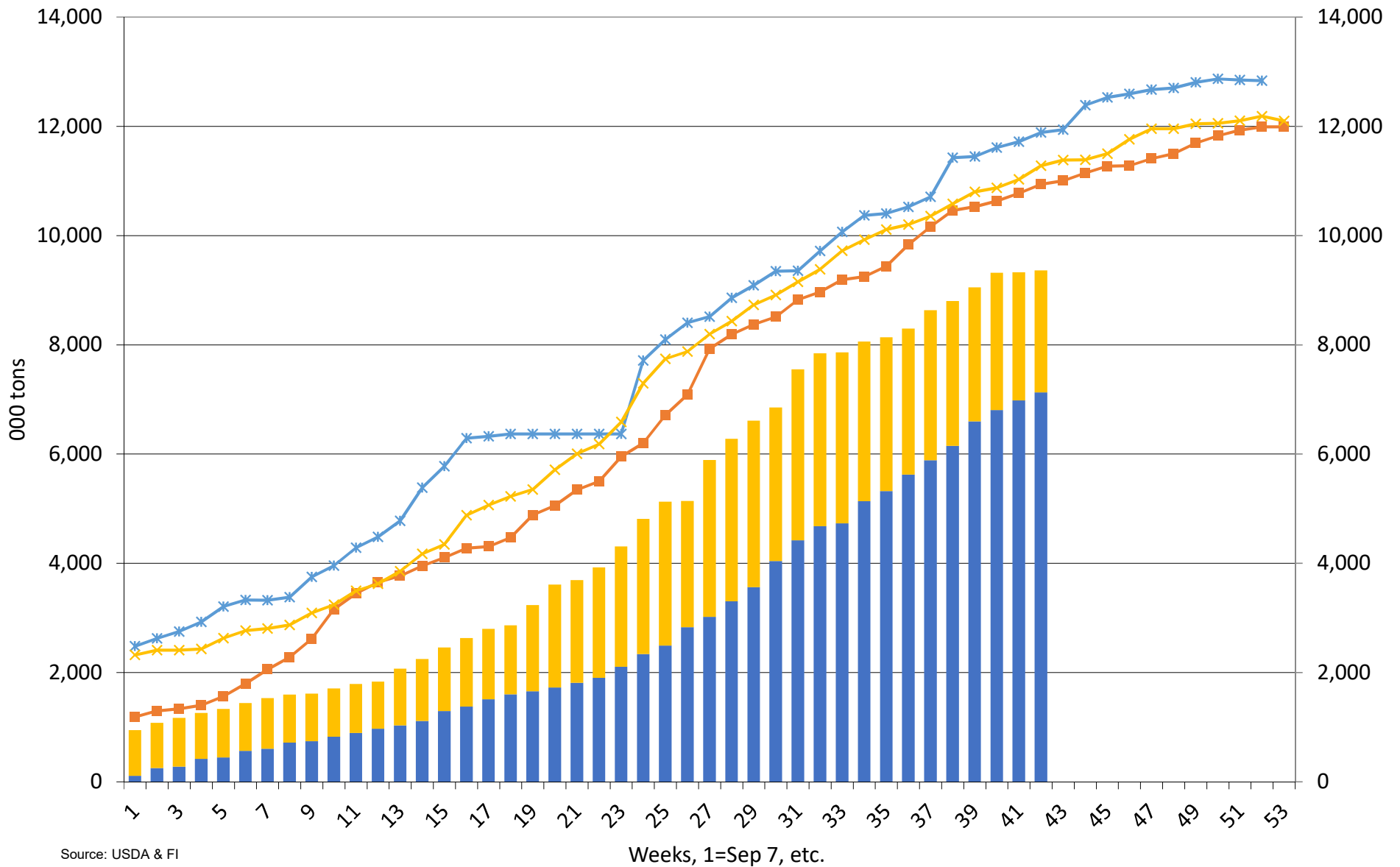


Source: USDA & FI

■ Accumulated Exports   
 ■ Outstanding Sales   
 —\* 2018-19   
 —■ 2017-18   
 —x 2016-17

# US Corn Current Crop-Year Commitments to Japan

## Thousand Tons, Sept-Aug Crop-Year



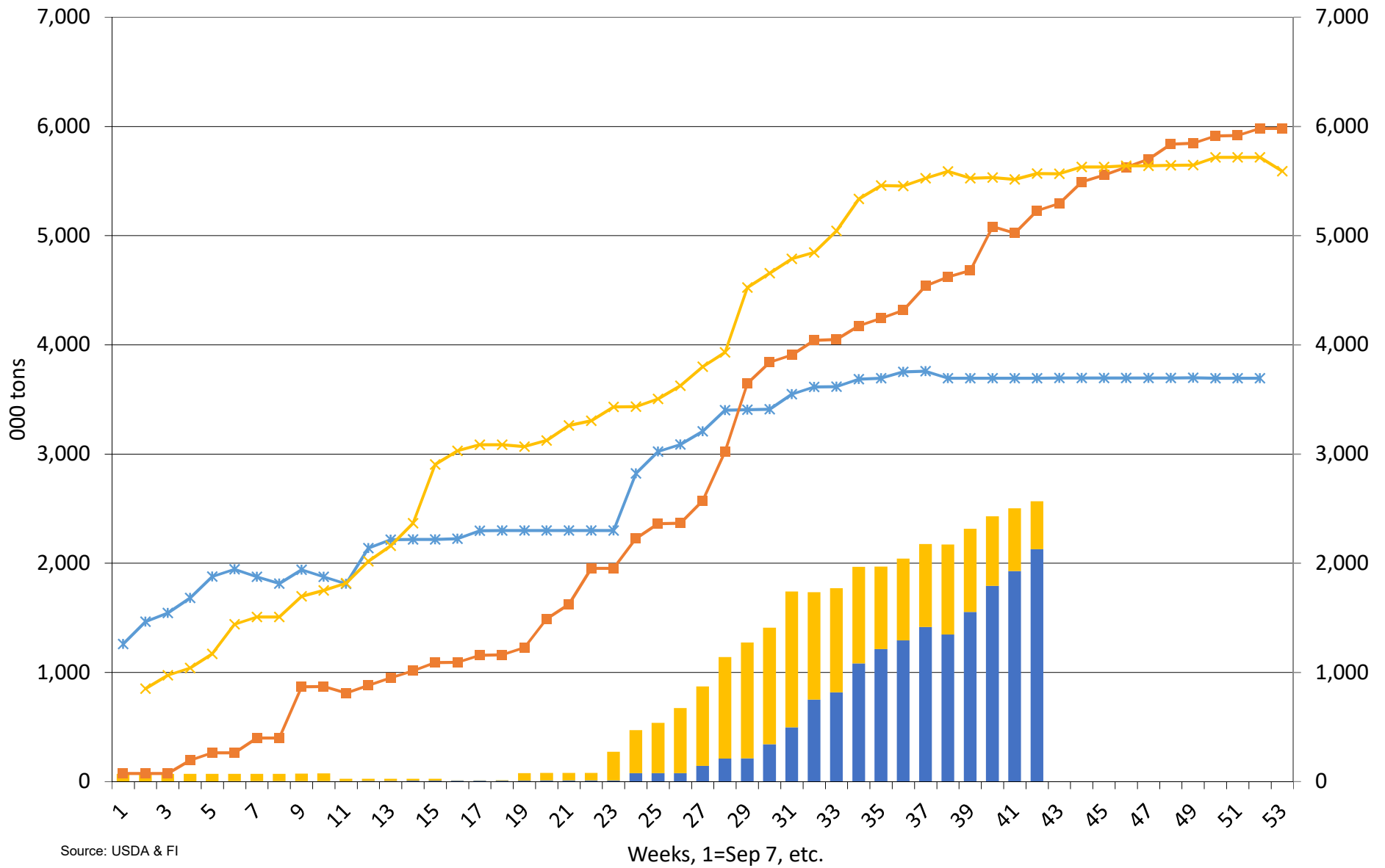
Source: USDA & FI

Weeks, 1=Sep 7, etc.

■ Accumulated Exports   
 ■ Outstanding Sales   
 \* 2018-19   
 ■ 2017-18   
 \* 2016-17

# US Corn Current Crop-Year Commitments to South Korea

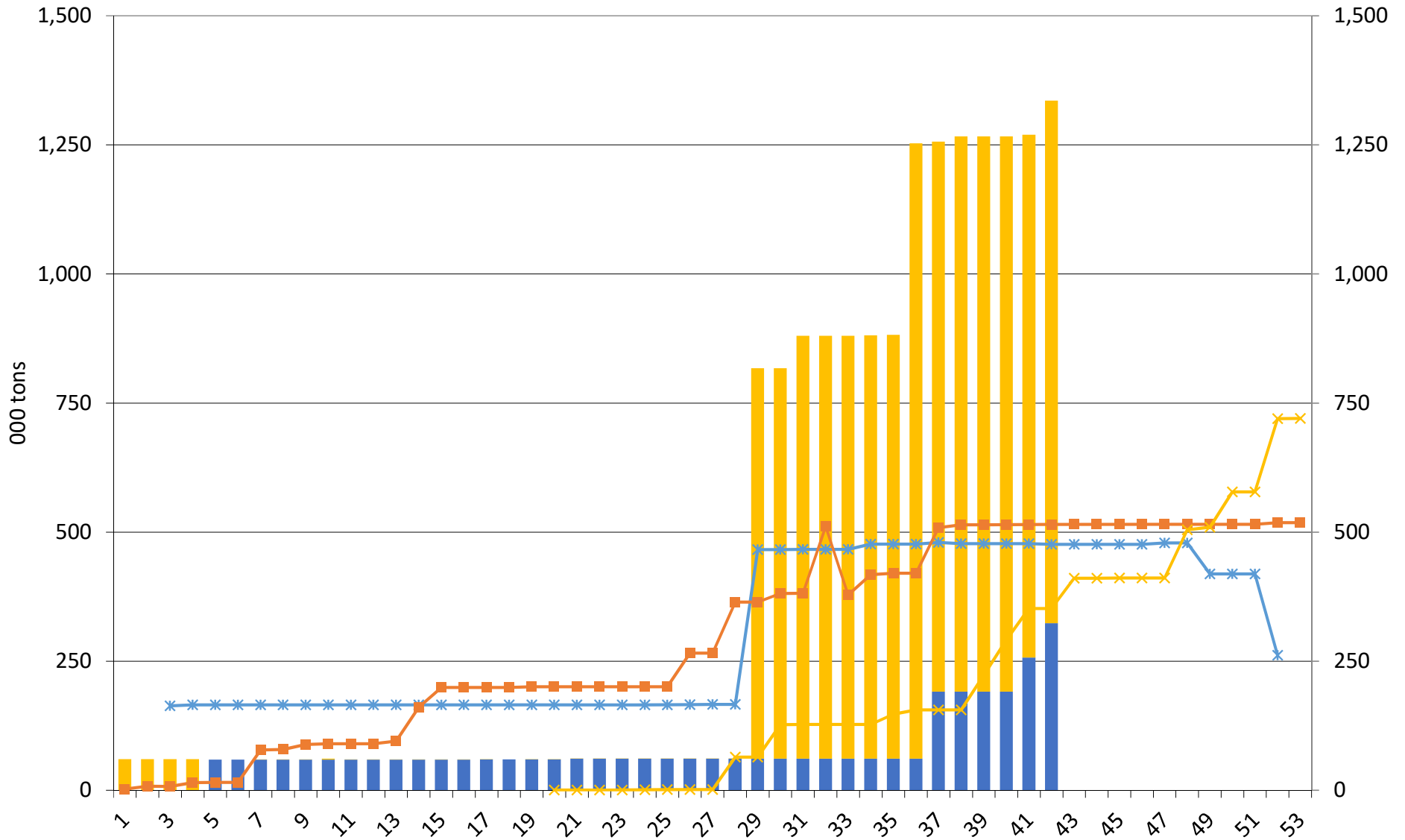
## Thousand Tons, Sept-Aug Crop-Year



■ Accumulated Exports   
 ■ Outstanding Sales   
 —\* 2018-19   
 —■ 2017-18   
 —x 2016-17

# US Corn Current Crop-Year Commitments to China

## Thousand Tons, Sept-Aug Crop-Year



Source: USDA & FSI

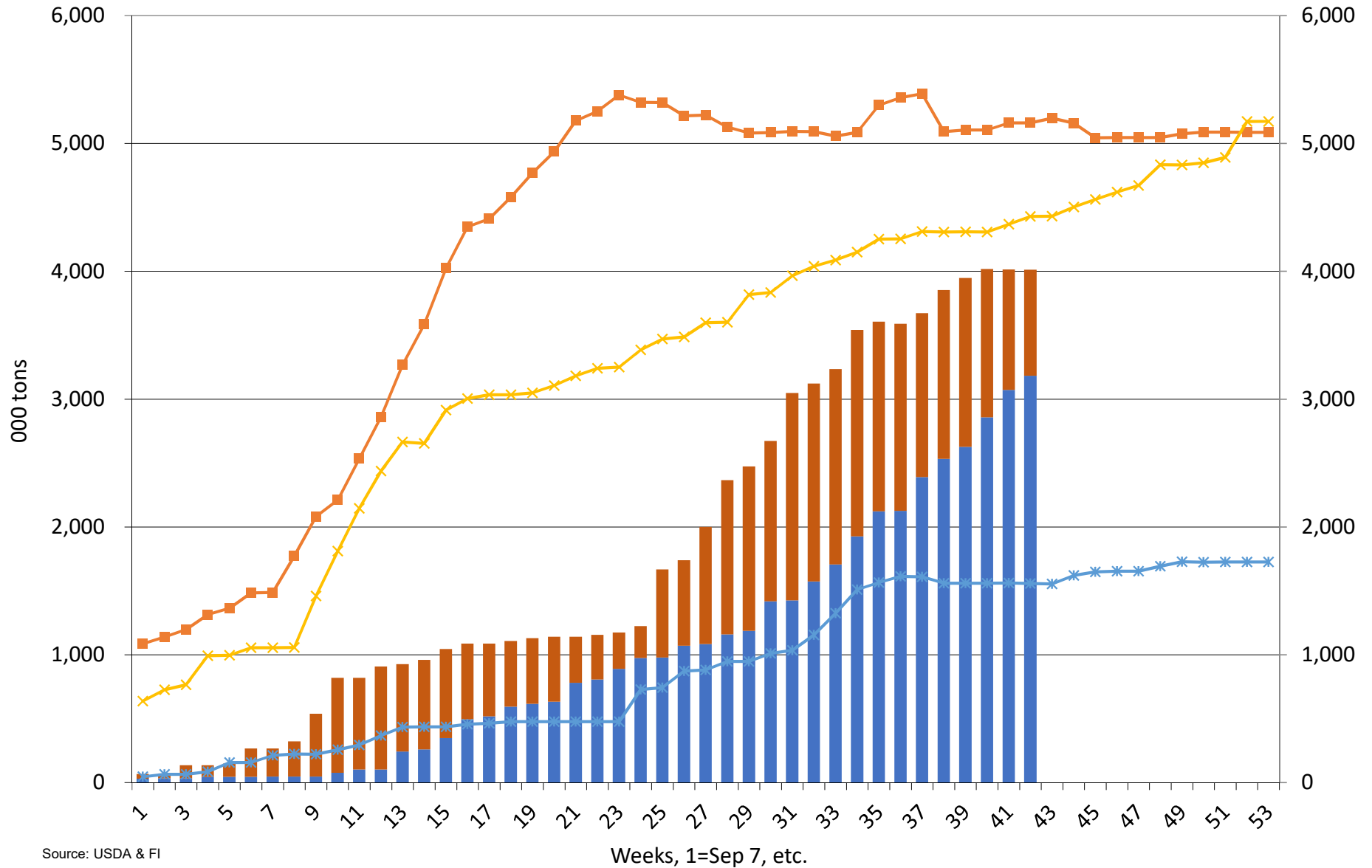
Weeks, 1=Sep 7, etc.

■ Accumulated Exports   
 ■ Outstanding Sales   
 \* 2018-19   
 ■ 2017-18   
 x 2016-17

Source: USDA and FI

# US Sorghum Current Crop-Year Commitments

## Thousand Tons, Sept-Aug Crop-Year



Source: USDA & FI

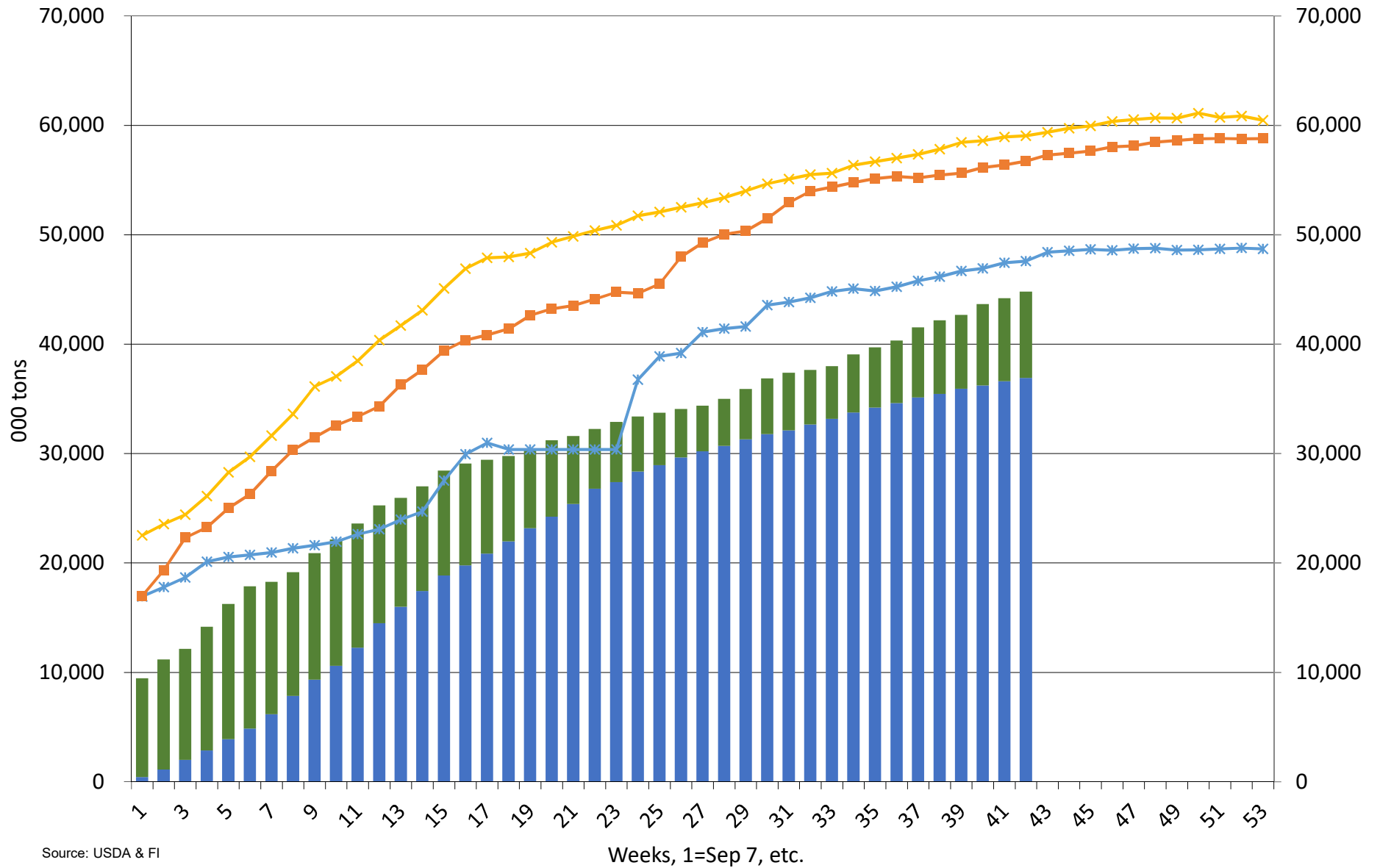
Weeks, 1=Sep 7, etc.

■ Accumulated Exports   ■ Outstanding Sales   \* 2018-19   ■ 2017-18   \* 2016-17

Source: USDA and FI

# US Soybean Current Crop-Year Commitments

## Thousand Tons, Sept-Aug Crop-Year

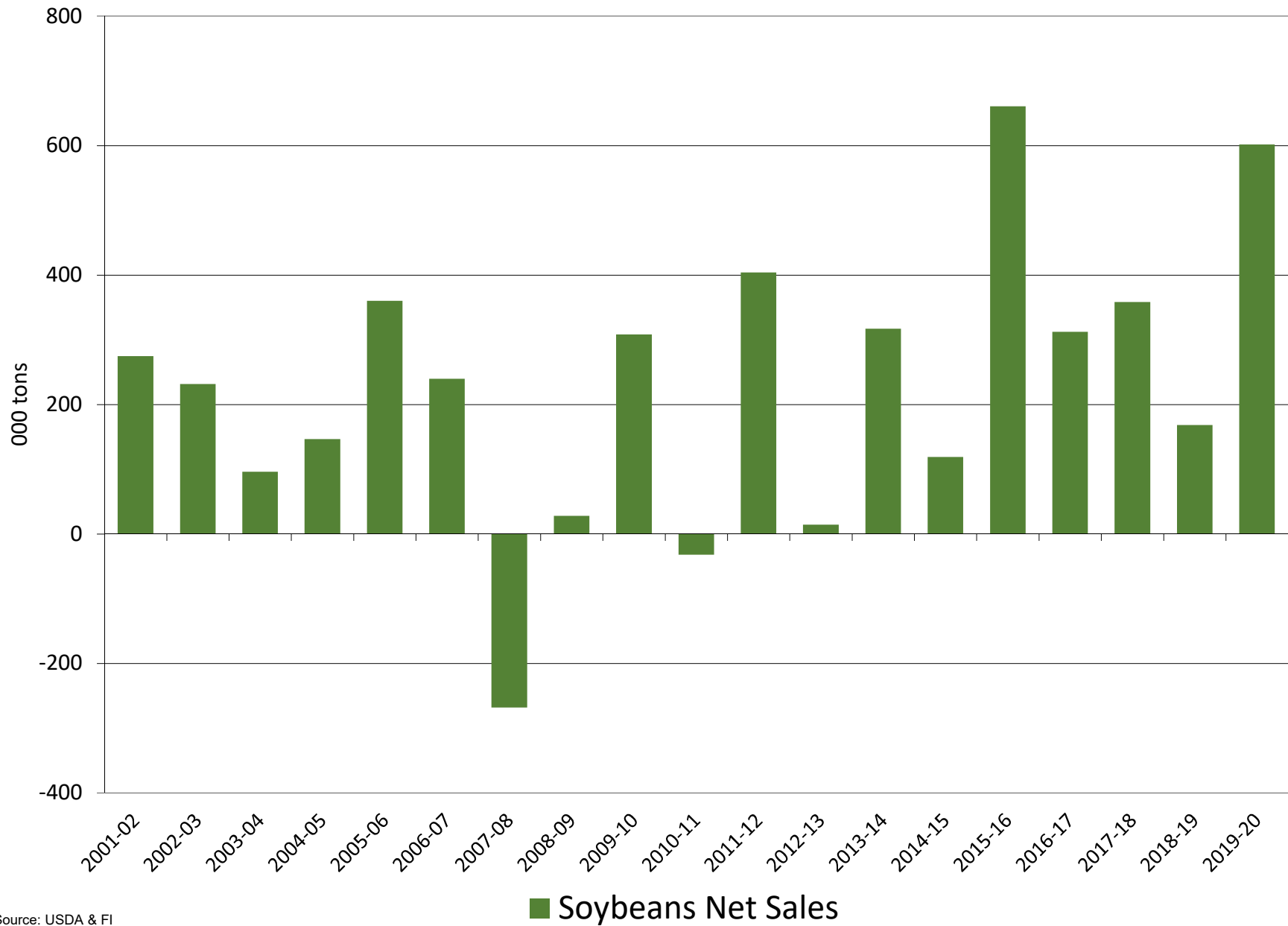


Source: USDA & FI

■ Accumulated Exports   ■ Outstanding Sales   \* 2018-19   ■ 2017-18   \* 2016-17

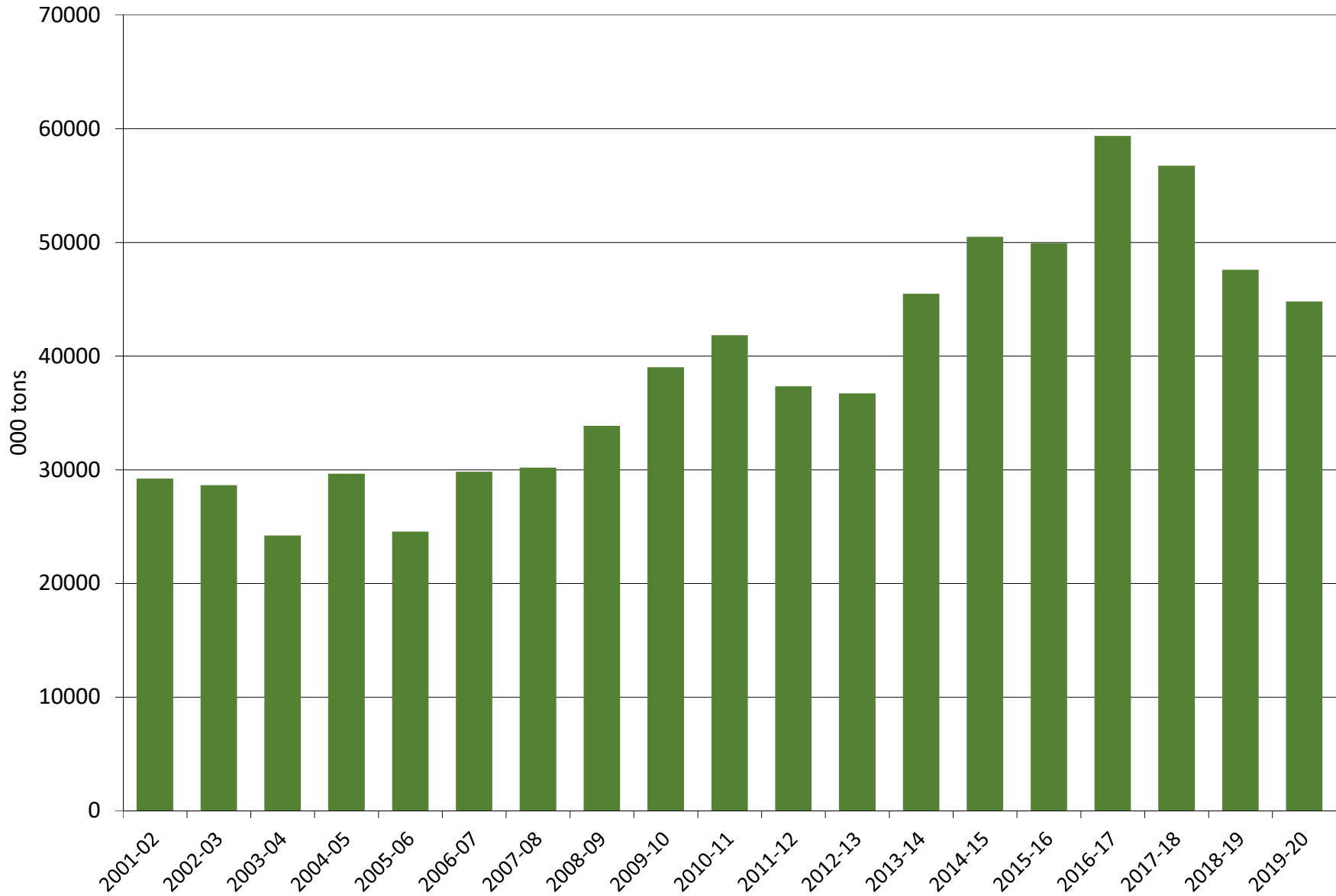


# US soybean export sales for the week ending on or near 06/21/2020



Source: USDA & FI

# US soybean export commitments on or near 06/21/2020

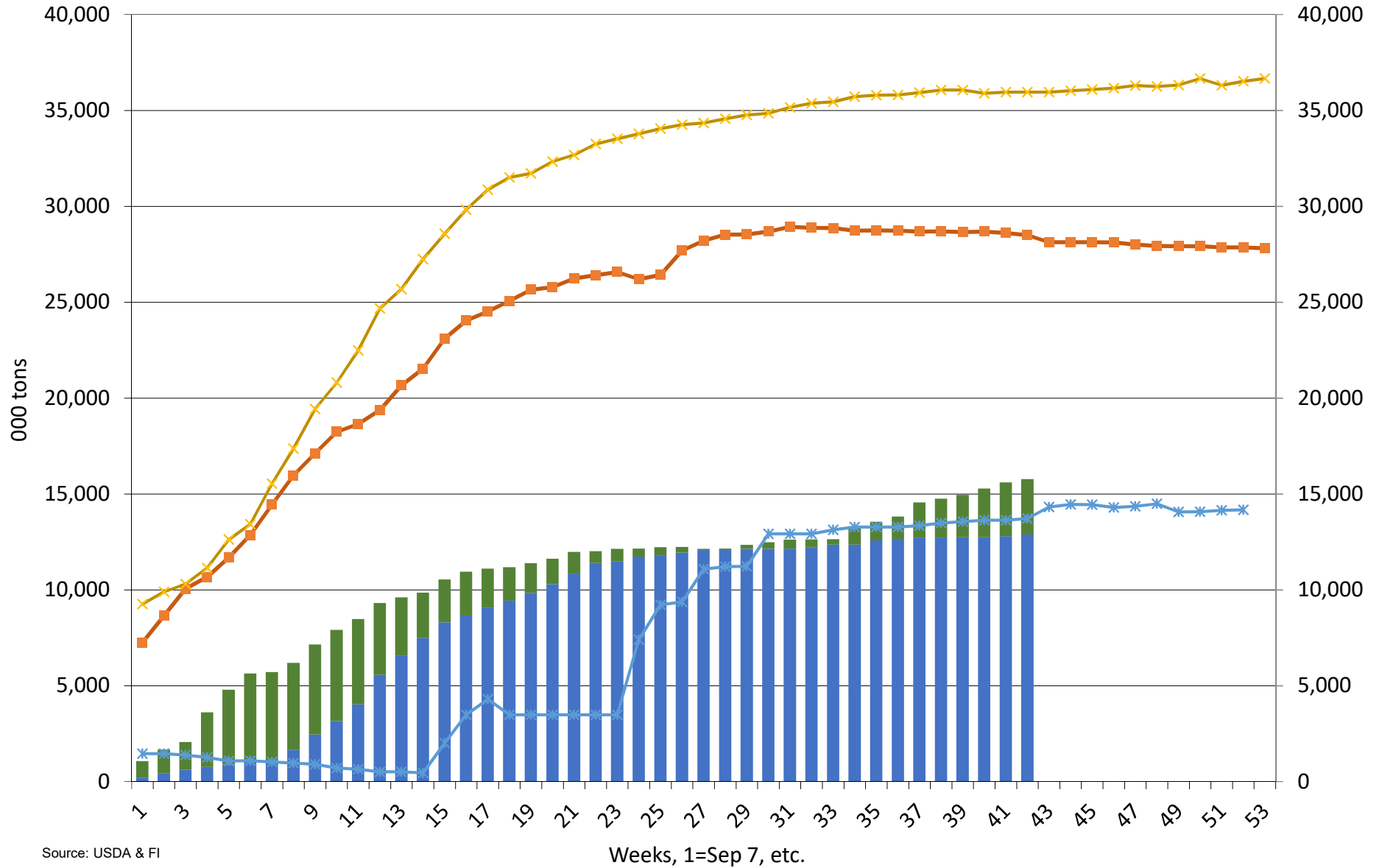


Source: USDA & FI

■ Soybeans Total Commitments 000 tons

Source: USDA and FI

## US Soybean Current Crop-Year Commitments to China Thousand Tons, Sept-Aug Crop-Year

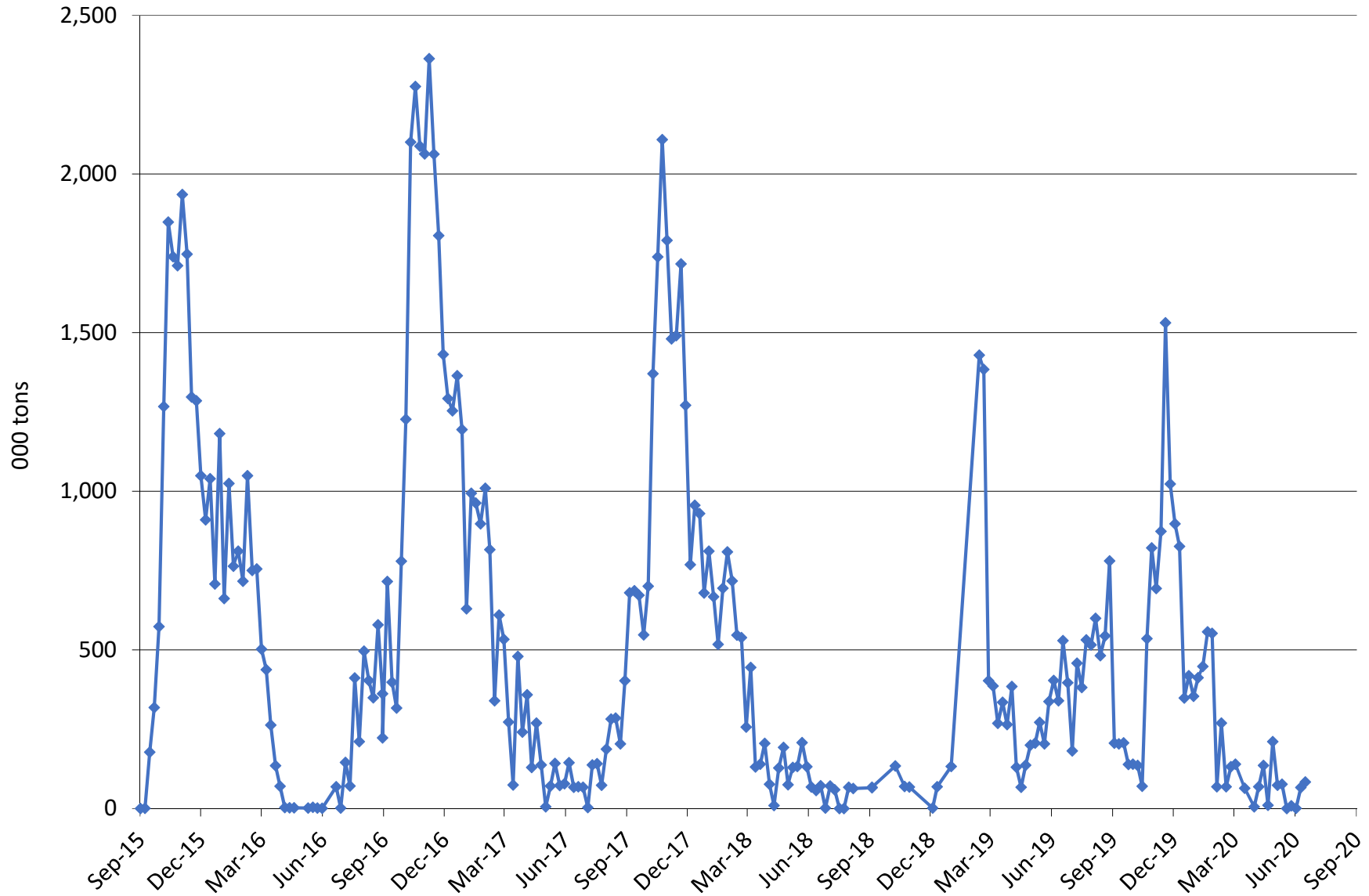


Source: USDA & FI

Accumulated Exports    Outstanding Sales    \* 2018-19    ■ 2017-18    × 2016-17

Source: USDA and FI

## US Soybean Current Crop-Year Exports to China Thousand Tons, Sept-Aug Crop-Year

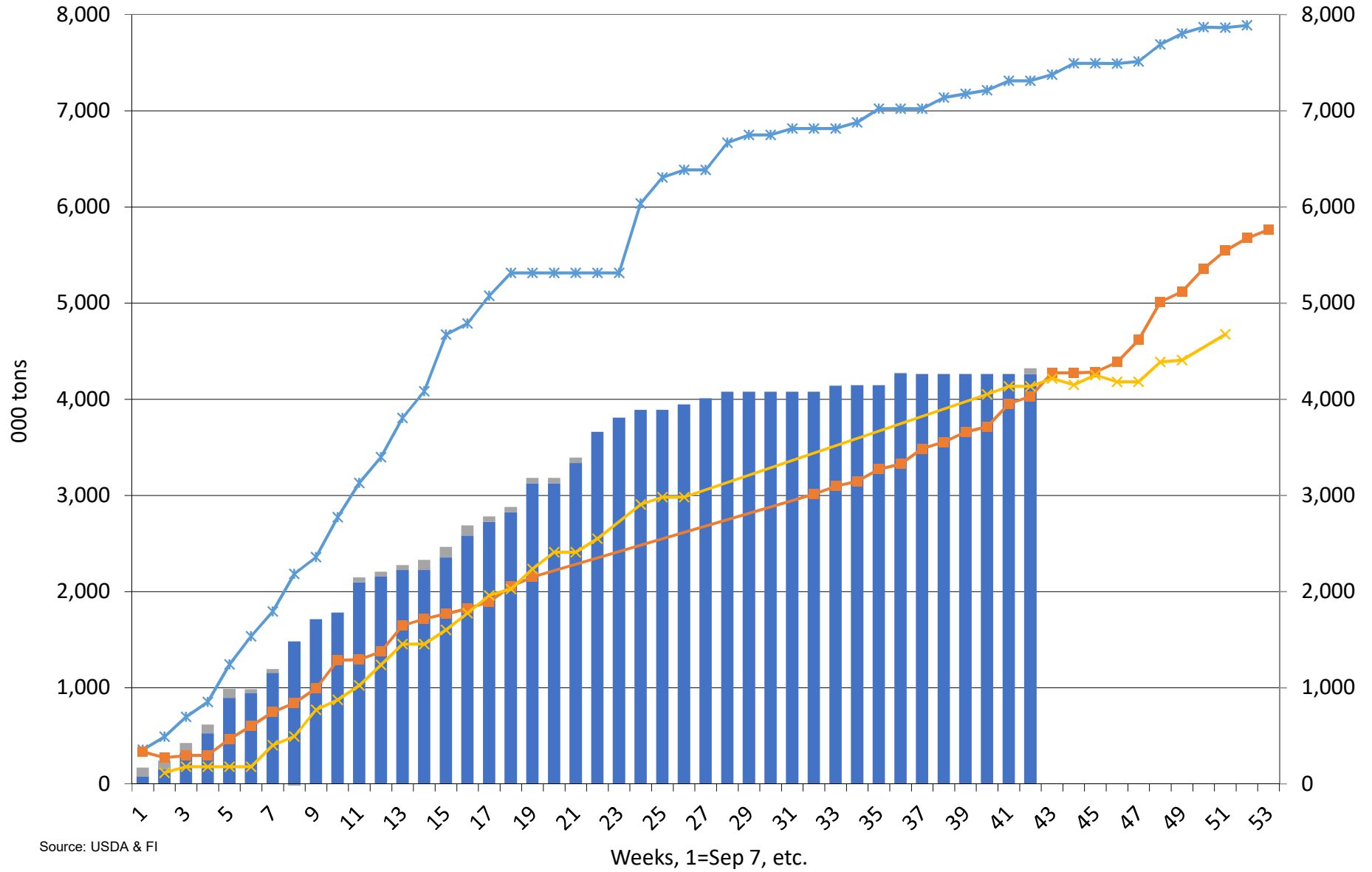


Source: USDA & FI

—◆— Accumulated Exports

Source: USDA and FI

## US Soybean Current Crop-Year Commitments to EU Thousand Tons, Sept-Aug Crop-Year

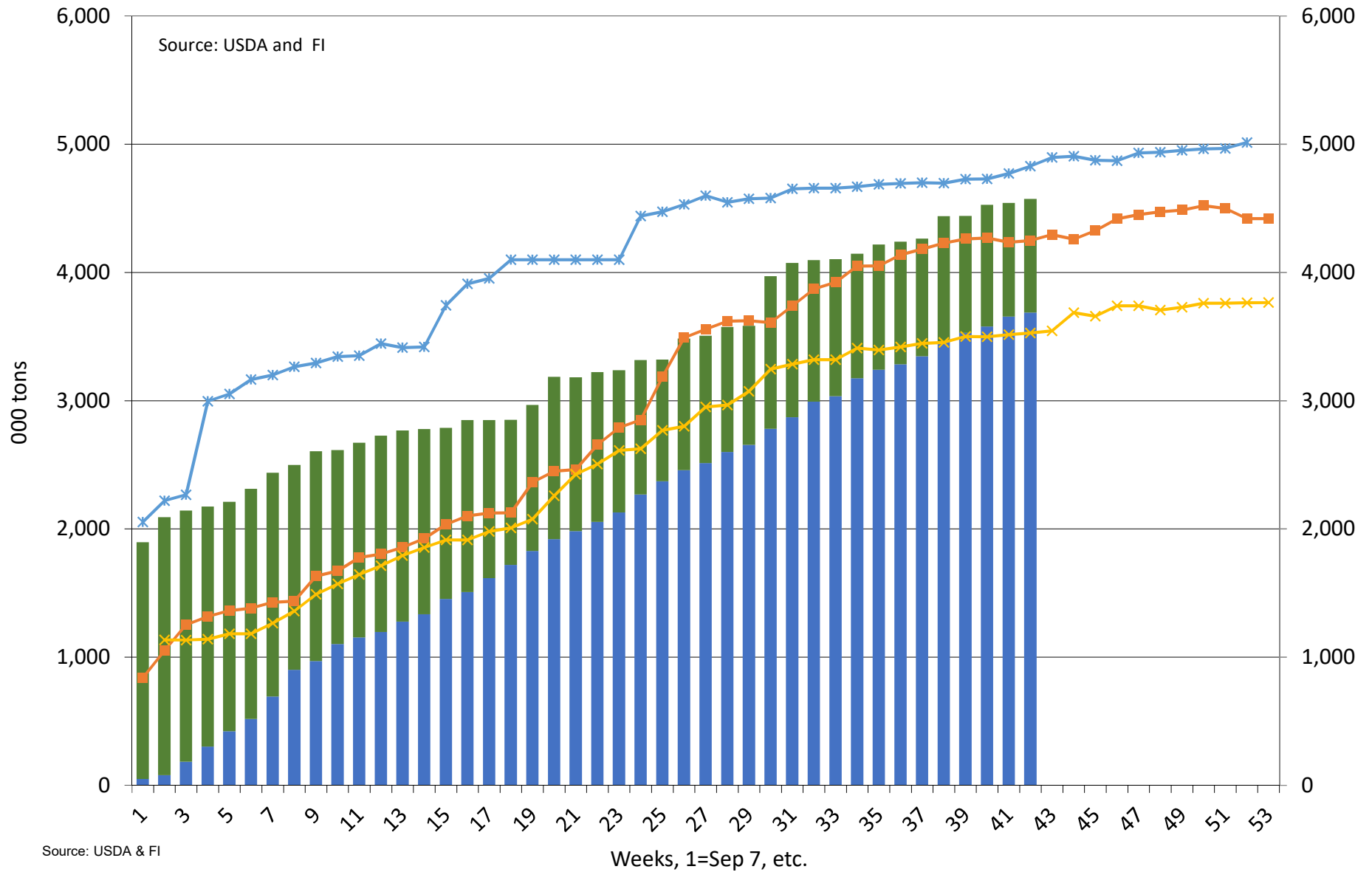


Source: USDA & FI

■ Accumulated Exports   ■ Outstanding Sales   \* 2018-19   ■ 2017-18   \* 2016-17

# US Soybean Current Crop-Year Commitments to Mexico

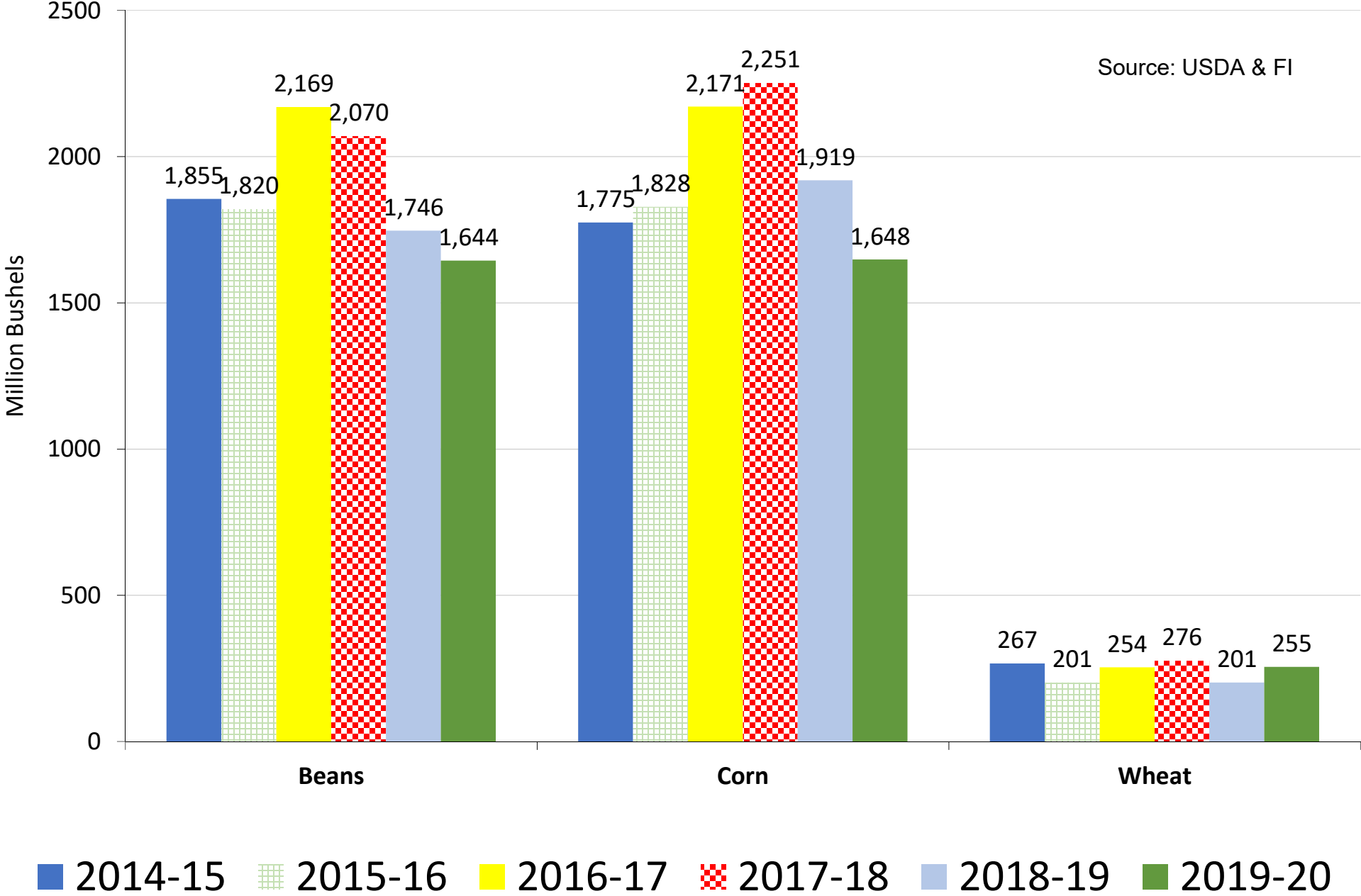
## Thousand Tons, Sept-Aug Crop-Year



Source: USDA & FI

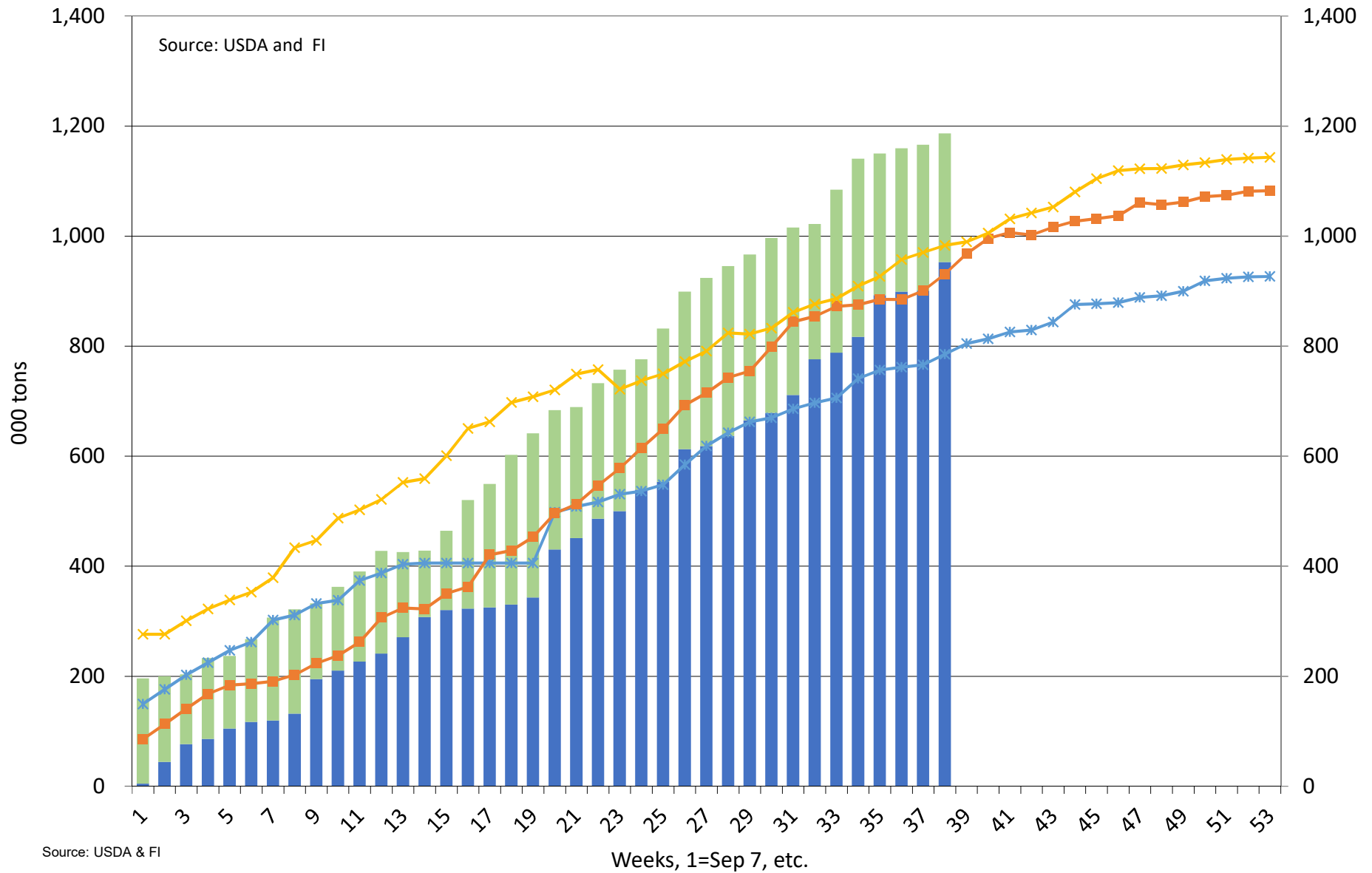
■ Accumulated Exports   
 ■ Outstanding Sales   
 —\* 2018-19   
 —■ 2017-18   
 —x 2016-17

# Crop year to date US export sales



# US Soybean Oil Current Crop-Year Commitments

## Thousand Tons, Sept-Aug Crop-Year

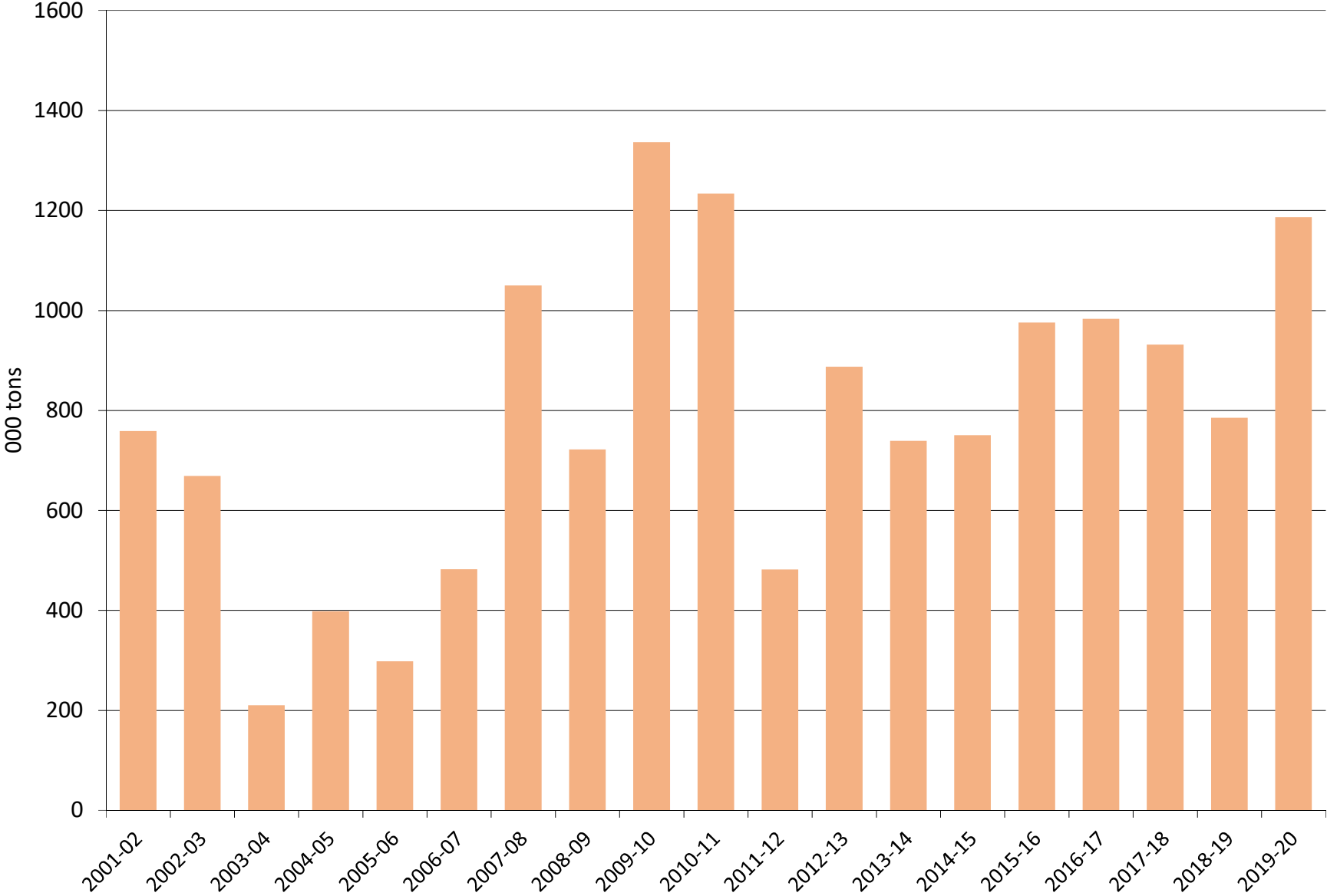


Source: USDA & FI

■ Accumulated Exports   
 ■ Outstanding Sales   
 —\* 2018-19   
 —■ 2017-18   
 —x 2016-17



# Soybean Oil Total Commitments 000 Metric Tons

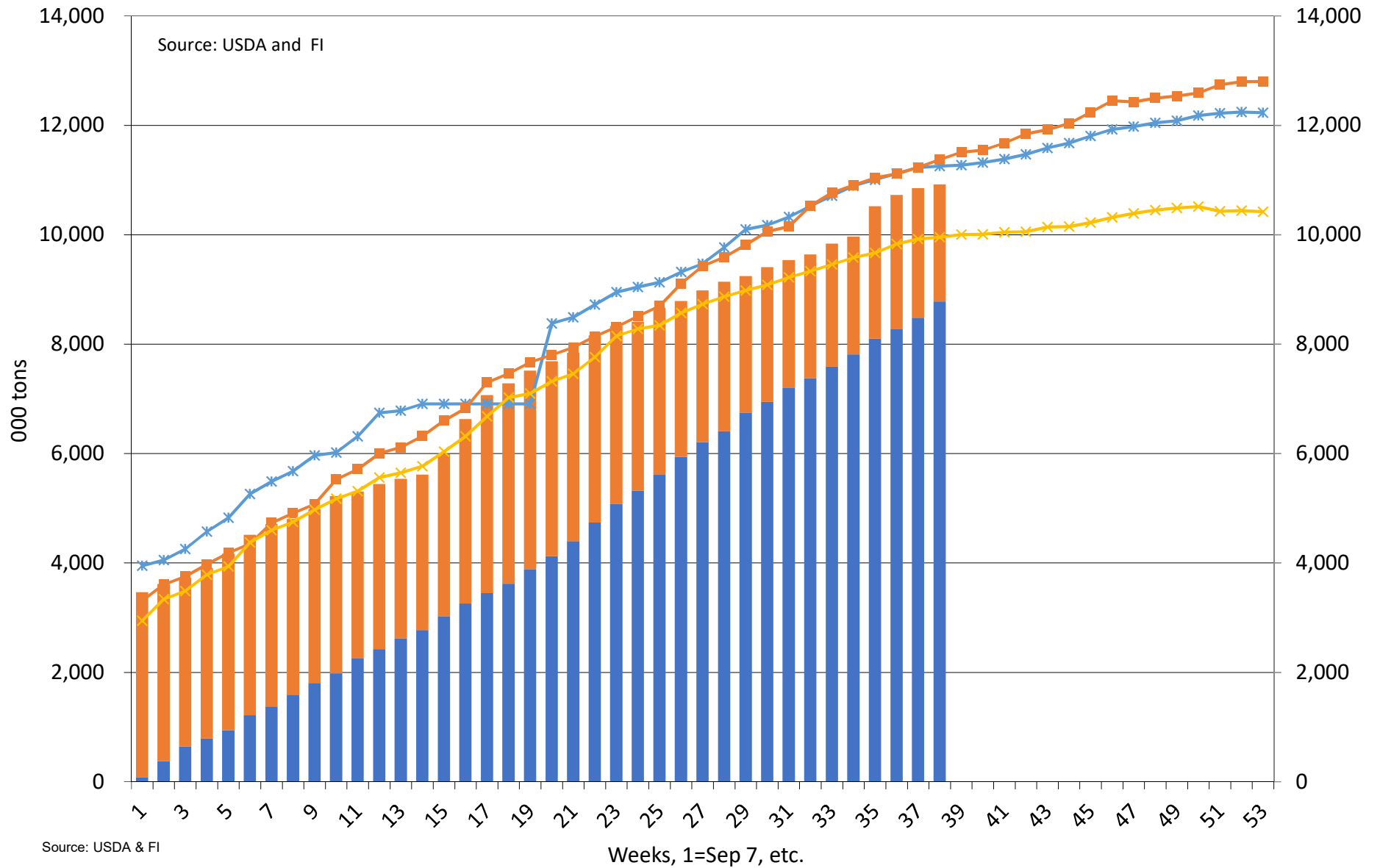


Source: USDA & FI

■ Soybean Oil Total Commitments 000 Metric Tons

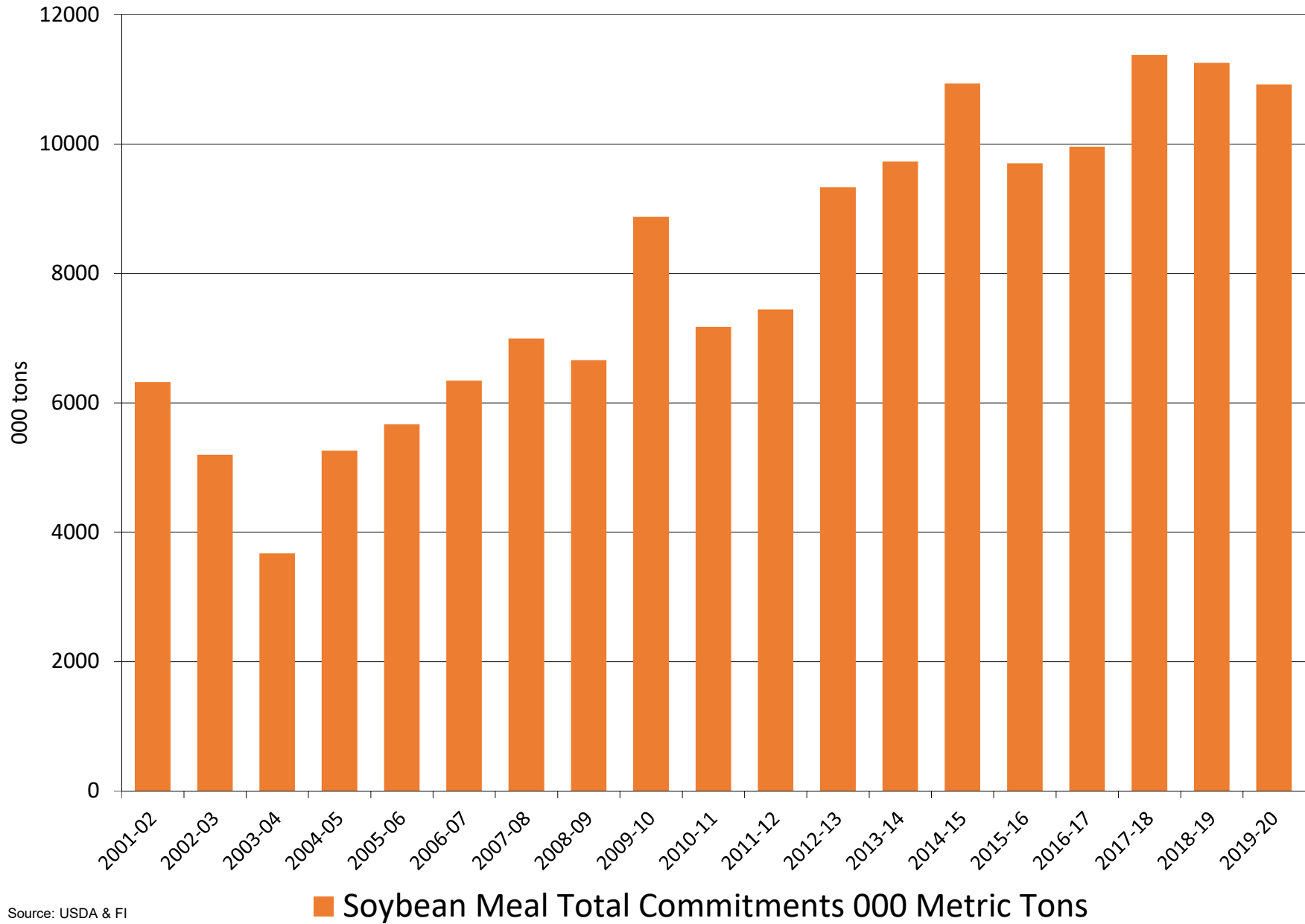
# US Soybean Meal Current Crop-Year Commitments

## Thousand Tons, Sept-Aug Crop-Year



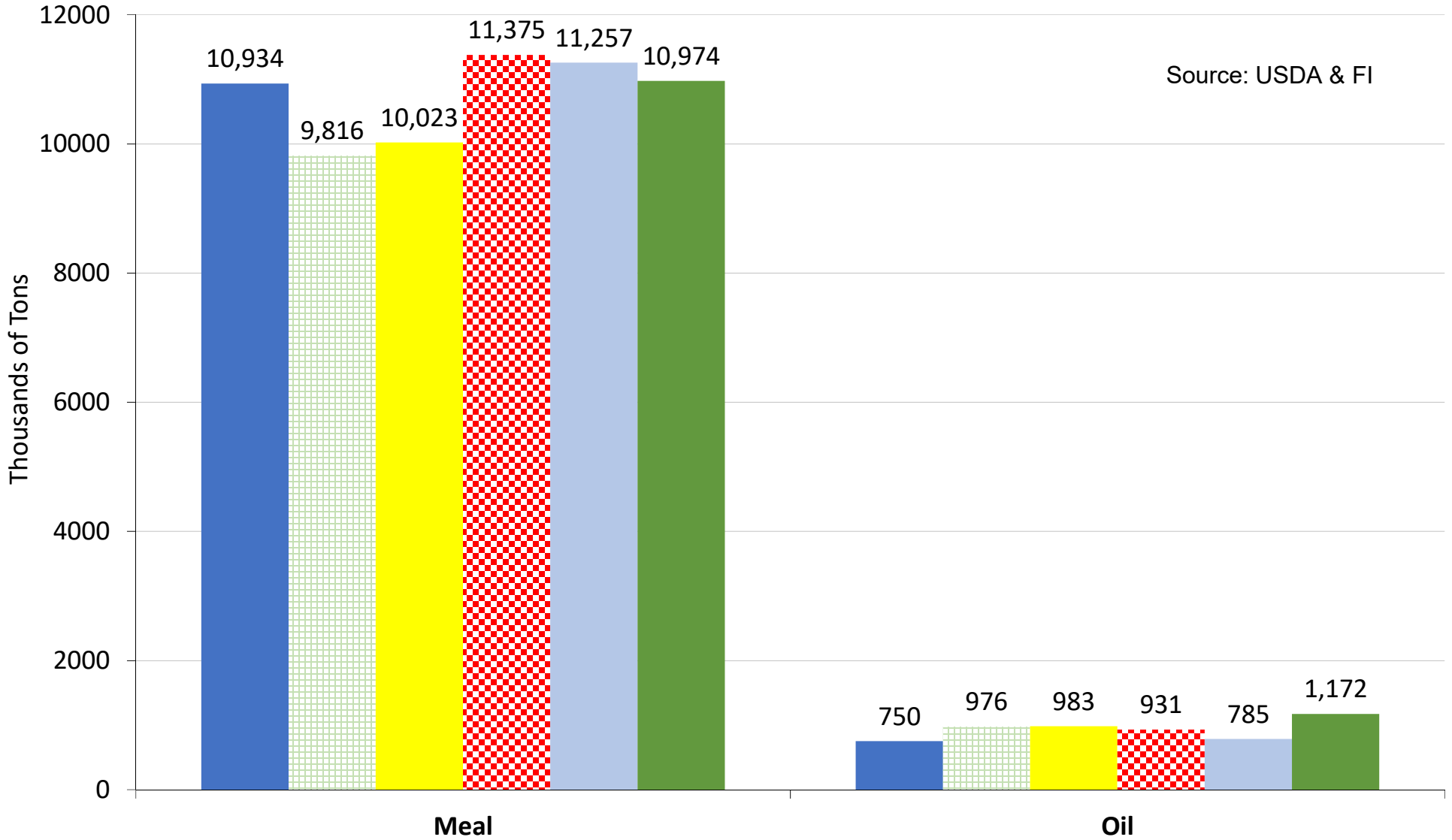
■ Accumulated Exports   
 ■ Outstanding Sales   
 —\* 2018-19   
 —\* 2017-18   
 —\* 2016-17

## US soybean meal export commitments on or near 06/21/2020



Source: USDA & FI

# Crop year to date US export sales



■ 2014-15   ■ 2015-16   ■ 2016-17   ■ 2017-18   ■ 2018-19   ■ 2019-20

# Disclaimer

TO CLIENTS/PROSPECTS OF FUTURES INTERNATIONAL, SEE RISK DISCLOSURE BELOW:

THIS COMMUNICATION IS CONVEYED AS A SOLICITATION FOR ENTERING INTO A DERIVATIVES TRANSACTION.

Any trading recommendations and market or other information to Customer by Futures International (FI), although based upon information obtained from sources believed by FI to be reliable may not be accurate and may be changed without notice to customer. FI makes no guarantee as to the accuracy or completeness of any of the information or recommendations furnished to Customer. Customer understands that FI, its managers, employees and/or affiliates may have a position in commodity futures, options or other derivatives which may not be consistent with the recommendations furnished by FI to Customer.

The risk of trading futures and options and other derivatives involves a substantial risk of loss and is not suitable for all persons. In purchasing an option, the risk is limited to the premium paid, and all commissions and fees involved with the trade. When an option is shorted or written, the writer of the option has unlimited risk with respect to the option written. The use of options strategies such as a straddles and strangles involve multiple option positions and may substantially increase the amount of commissions and fees paid to execute the strategy. Option prices do not necessarily move in tandem with cash or futures prices. Each person must consider whether a particular trade, combination of trades or strategy is suitable for that person's financial means and objectives.

This material may include discussions of seasonal patterns, however, futures prices have already factored in the seasonal aspects of supply and demand, and seasonal patterns are no indication of future market trends. Finally, past performance is not indicative of future results.

This communication may contain links to third party websites which are not under the control of FI and FI is not responsible for their content. Products and services are offered only in jurisdictions where solicitation and sale are lawful, and in accordance with applicable laws and regulations in each such jurisdiction.