

USDA US Export Sales Results in 000 Metric Tons

		Actual 5/14/2020	Trade Estimates* 5/14/2020	Last Week Last Week		Year Ago 5/16/2019
Beans	2019-20	1205.0	500-1000	2017-18	655.5	370.9
	2020-21	464.0	300-600	2019-20	440.0	303.4
Meal	2019-20	198.8	75-250	Sales	101.4	Sales 196.1
	2020-21	0.0	0-50			
	Shipments	208.9	NA	Shipments	174.5	Shipments 212.8
Oil	2019-20	62.1	15-45	Sales	6.7	Sales 10.8
	2020-21	0.5	0-5			
	Shipments	11.7	NA	Shipments	65.1	Shipments 17.7
Corn	2019-20	884.2	500-1000	2017-18	1073.2	553.3
	2020-21	(29.3)	200-400	2019-20	554.5	80.8
Wheat	2019-20	175.8	100-250	2019-20	203.5	114.5
	2020-21	252.4	100-400	2020-21	149.8	419.4

Source: FI & USDA *Reuters estimates

n/c= New Crop

USDA Export Sales Estimates/Results in 000 tons

	ESTIMATED 5/14/2020			ACTUAL This Week			5/7/2020 Last Week			5/16/2019 Year Ago		
Beans	19/20	600-800		19/20	1,205.0		19/20	655.5		18/19	370.9	
	n/c	300-500		n/c	464.0		n/c	440.0		n/c	303.4	
				Sales to China 737.4			Sales to China 274.9			Sales to China 5.1		
Meal	Shipped			Shipped			Shipped			Shipped		
	19-20	75-175	150-300	19/20	198.8		19/20	101.4	174.5	18/19	196.1	212.8
	n/c	0-50		n/c	0.0		18.8		n/c	69.4		
Oil	Shipped			Shipped			Shipped			Shipped		
	19-20	20-35	20-30	19/20	62.1		19/20	6.7	65.1	18/19	10.8	17.7
	n/c	0-5		n/c	0.5		2.8		n/c	0.0		
			Sales to China 20.0			Sales to China 0.0			Sales to China 0.0			
Corn	19/20	700-1000		19/20	884.2		19/20	1,073.2		18/19	553.3	
	n/c	200-400		n/c	(29.3)		n/c	554.5		n/c	80.8	
				Sales to China 3.6			Sales to China 371.0			Sales to China 0.2		
Wheat	19/20	100-200		19/20	175.8		19/20	203.5		18/19	114.5	
	n/c	100-300		n/c	252.4		n/c	149.8		n/c	419.4	

o/c=Old Crop, n/c= New Crop Souce: Futures International and USDA

US crop-year to date export sales

% sold from USDA's export projection

	Current	Last Year	YOY	YOY	2019-20	2018-19	2017-18	2016-17
2019-20 Soybeans mil bu	1526	1682	-156	-9.3%	91.1%	96.2%	94.2%	97.3%
2019-20 SoyOil MT	706	872	-166	-19.1%	93.7%	80.2%	78.7%	76.5%
2019-20 SoyMeal MT	10711	10767	-56	-0.5%	80.6%	87.1%	84.7%	91.4%
2019-20 Corn mil bu	1554	1864	-309	-16.6%	87.6%	90.3%	86.2%	90.6%
2019-20 Wheat mil bu	976	945	31	3.3%	100.6%	100.9%	95.7%	98.6%

Souce: Futures International and USDA

EXPORT SALES SITUATION

		SOYMEAL																			
		(000 metric tons)																			
Weekly Sales Total		2019-20	2018-19	2017-18	2016-17	2015-16	2014-15	2013-14	2012-13	2011-12	2010-11	2009-10	2008-09	2007-08	2006-07	2005-06	2004-05	2003-04	2002-03	2001-02	
New Crop Sales		3,048.4	3,599.5	3,206.0	2,962.9	3,686.7	5,318.9	2,679.3	3,203.3	1,431.4	2,079.9	3,014.9	1,673.6	1,648.7	1,117.6	1,051.0	1,586.8	1,677.7	1,398.4	1,612.1	
Weeks remaining																					
	3-Oct	364.7	348.2	106.0	398.0	225.8	707.6	1,189.2	143.5	558.6	423.1	466.1	29.2	266.0	611.2	59.9	177.6	456.0	269.1	562.9	
	10-Oct	152.9	104.1	296.0	146.2	264.4	195.9	0.0	173.1	348.9	245.7	115.7	242.3	100.4	151.4	119.8	230.5	291.2	112.8	220.2	
	17-Oct	110.4	203.0	142.8	301.0	218.7	23.0	0.0	73.2	74.1	153.9	176.2	263.5	244.4	101.0	194.2	182.9	96.0	103.1	186.6	
	24-Oct	179.1	317.4	225.0	149.9	246.2	147.8	805.2	194.5	120.8	165.6	116.7	130.2	203.9	57.7	304.7	24.4	65.4	218.5	231.3	
	31-Oct	262.4	255.1	212.9	437.4	208.2	-123.7	287.8	234.6	291.4	365.3	224.1	107.4	211.0	265.9	79.8	145.8	589.6	228.7	78.9	
	7-Nov	345.3	432.3	163.1	224.5	224.1	21.3	283.2	197.9	201.5	198.0	357.5	124.4	153.2	132.7	204.7	97.2	-131.5	87.7	161.9	
	14-Nov	196.4	229.7	379.8	150.4	254.9	265.7	116.0	365.1	150.2	292.7	225.2	92.3	133.1	245.9	143.2	125.2	74.8	222.2	153.2	
	21-Nov	93.2	189.5	176.6	222.5	77.5	-22.3	307.9	429.9	135.5	133.8	107.4	59.7	145.2	214.1	76.1	110.6	102.1	210.6	144.2	
	28-Nov	181.1	287.3	166.4	200.0	228.7	226.8	120.4	238.2	170.0	193.4	232.3	106.0	163.4	116.5	272.4	82.8	-4.7	130.5	173.4	
	5-Dec	238.6	50.5	455.4	139.2	108.6	88.9	82.7	390.8	103.7	171.8	191.4	18.5	96.0	205.5	120.7	167.2	46.3	110.8	134.2	
	12-Dec	83.5	300.0	184.1	251.9	252.5	146.8	77.1	124.7	142.0	113.5	254.2	62.2	111.8	115.4	84.1	113.4	129.5	84.7	142.4	
	19-Dec	138.0	427.4	288.3	83.3	78.9	206.7	83.3	53.8	51.1	219.3	286.9	145.7	73.3	108.7	81.8	29.7	86.2	145.5	238.6	
	26-Dec	94.7	40.7	109.0	119.1	46.5	157.9	123.9	118.2	144.4	24.5	61.8	43.3	49.1	71.8	46.2	113.7	17.6	89.5	180.9	
	2-Jan	74.2	124.8	209.3	269.8	64.7	37.3	62.8	236.1	48.0	26.2	356.7	19.7	77.9	101.5	68.9	70.7	-30.0	12.1	4.7	
	9-Jan	375.2	NA	281.8	276.8	280.6	72.1	234.7	218.0	181.2	232.2	416.2	74.4	93.8	221.2	158.0	104.8	55.6	192.1	260.3	
	16-Jan	641.9	NA	223.1	365.0	200.8	284.5	241.4	141.7	124.2	-30.0	254.1	210.8	162.4	34.4	189.1	47.1	79.1	214.7	142.8	
	23-Jan	438.8	NA	474.8	347.7	186.3	296.5	68.3	196.3	74.7	177.9	134.9	201.7	225.8	160.5	196.6	94.4	-4.1	203.3	99.8	
	30-Jan	212.7	NA	160.8	71.8	189.4	296.3	283.7	132.4	161.9	182.7	102.7	184.0	365.8	135.3	133.3	44.0	21.8	-50.1	198.9	
	6-Feb	234.3	NA	210.0	223.0	111.4	189.4	18.7	236.1	80.1	107.7	242.1	196.7	106.6	170.3	152.9	173.5	-93.7	75.1	243.0	
	13-Feb	169.4	1,468.8	131.9	139.5	171.7	316.6	227.5	250.3	216.0	108.3	81.9	142.6	48.6	201.6	77.3	52.8	80.8	76.0	195.7	
	20-Feb	157.5	113.6	139.0	301.9	132.1	-6.4	115.9	119.3	40.0	148.1	85.7	145.6	102.8	0.8	89.6	52.4	-127.7	44.6	105.4	
	27-Feb	316.7	230.5	200.6	389.5	46.6	130.2	232.8	51.7	111.0	156.7	1.9	117.1	75.6	66.1	78.0	121.7	-3.4	28.9	141.1	
	5-Mar	171.8	226.0	173.3	127.0	83.4	101.3	160.0	143.4	156.1	51.4	92.5	147.4	147.8	277.0	93.5	90.4	95.6	93.9	129.3	
	12-Mar	129.1	97.5	194.6	65.9	468.7	204.0	242.9	137.2	87.4	210.9	189.5	33.4	175.8	17.5	115.2	149.9	33.0	152.7	82.7	
	19-Mar	251.2	84.3	184.1	228.6	211.6	224.3	158.5	92.6	132.9	79.7	68.1	140.8	156.8	105.2	179.0	195.5	42.8	127.3	-63.7	
	26-Mar	125.2	190.3	414.3	158.7	23.3	214.1	307.8	227.1	174.0	46.2	211.9	106.9	90.0	121.7	37.1	33.5	39.4	87.9	-7.1	
	2-Apr	193.3	152.1	317.4	135.0	196.8	46.0	179.6	266.0	33.2	171.6	85.0	85.8	129.6	172.5	85.3	77.9	37.6	25.4	65.3	
	9-Apr	158.8	295.3	164.9	112.0	131.6	130.4	36.6	193.3	300.7	130.1	94.3	167.2	176.1	103.9	142.6	95.6	13.7	154.3	80.0	
	16-Apr	103.0	329.1	223.7	103.6	209.3	107.4	186.3	93.2	221.1	121.1	57.4	108.3	140.4	151.3	18.4	58.5	48.5	21.6	48.3	
	23-Apr	163.6	79.2	246.0	137.1	152.7	134.7	140.9	34.4	59.0	78.7	137.8	293.0	59.0	119.1	124.0	110.3	70.2	104.9	48.3	
	30-Apr	131.4	150.8	90.9	113.6	115.3	136.8	75.0	82.8	138.4	61.0	68.3	135.4	122.2	68.6	61.8	51.1	22.5	-11.9	132.4	
	7-May	101.4	196.1	376.0	125.0	73.0	45.2	84.5	123.6	114.3	10.0	32.5	260.1	115.6	86.9	157.3	66.1	15.6	72.2	98.3	
	14-May	198.8	188.0	239.5	123.6	169.5	103.0	186.3	149.2	144.6	137.5	47.4	210.8	151.4	117.7	87.3	78.2	43.6	24.3	71.6	
	21-May																				
	28-May																				
	4-Jun																				
	11-Jun																				
	18-Jun																				
	25-Jun																				
Crop year to date sales		9837.0	10711.1	10767.2	9601.3	9340.7	10425.3	9400.5	9065.5	6522.0	6988.4	8591.3	6080.0	6323.5	5948.5	5083.9	4956.2	3936.7	5061.6	6298.0	
Average weekly sales																					
***rate to reach proj total		125.4	84.1	103.3	47.9	79.7	77.8	57.0	56.9	122.9	66.3	81.3	86.4	109.3	108.1	117.6	90.3	40.0	21.1	27.2	
Proj./Actual export total***		12202	12296	12715	10505	10845	11891	10474	10139	8839	8238	10124	7708	8384	7987	7301	6659	4690	5460	6811	
YTD sales as % of total		80.6	87.1	84.7	91.4	86.1	87.7	89.7	89.4	73.8	84.8	84.9	78.9	75.4	74.5	69.6	74.4	83.9	92.7	92.5	
***Does not include USDA's Forecast on Flour Meal (MT)																					

Source: Futures International and USDA

EXPORT SALES SITUATION

SOYOIL

(000 metric tons)

Weekly Sales Total	2019-20	2018-19	2017-18	2016-17	2015-16	2014-15	2013-14	2012-13	2011-12	2010-11	2009-10	2008-09	2007-08	2006-07	2005-06	2004-05	2003-04	2002-03	2001-02	
New Crop Sales	194.3	138.1	74.7	259.5	137.4	95.4	26.6	144.7	38.9	633.7	388.3	67.1	14.3	92.8	79.7	121.3	118.0	149.9	46.8	
Weeks remaining	3-Oct	1.2	11.4	10.9	16.8	79.8	69.8	38.1	57.8	36.6	26.7	195.9	79.8	58.2	6.0	3.8	17.5	42.4	67.5	36.4
19	10-Oct	4.0	26.6	27.4	0.3	53.2	46.4	0.0	24.5	6.1	13.7	24.0	16.1	26.4	6.2	-1.3	8.2	2.4	2.5	36.0
	17-Oct	3.4	26.3	27.9	24.5	14.8	10.6	0.0	12.0	4.1	5.5	23.3	3.3	24.3	2.1	6.3	12.3	5.9	9.0	11.2
	24-Oct	30.0	22.2	27.0	21.2	82.1	15.8	14.5	28.5	0.7	-32.6	9.2	5.2	14.8	5.8	4.7	4.1	9.5	9.1	28.4
	31-Oct	3.8	22.4	15.9	16.3	36.2	13.9	65.9	36.7	21.7	6.0	6.9	1.0	7.2	-0.1	41.2	0.3	-19.2	26.3	36.4
	7-Nov	30.6	15.1	2.7	14.4	28.9	15.6	7.2	21.0	2.1	60.0	5.8	6.3	29.7	18.0	0.9	13.6	8.1	1.6	-8.2
	14-Nov	39.1	40.0	4.2	26.1	37.7	19.6	95.8	124.1	2.7	-0.7	12.4	7.9	65.1	0.3	11.6	11.9	13.0	11.6	2.2
	21-Nov	14.9	9.2	11.6	54.5	12.8	35.6	18.8	121.5	8.9	32.1	19.2	17.1	31.8	31.5	3.4	9.4	6.9	11.3	6.5
	28-Nov	10.8	21.1	21.0	13.4	5.3	25.1	1.4	19.0	18.5	51.3	19.0	2.7	40.9	48.4	14.5	2.3	-0.8	8.1	22.0
	5-Dec	30.0	5.9	14.5	40.3	13.8	14.7	2.3	30.5	5.5	128.2	12.3	0.4	42.1	15.6	0.3	11.3	1.7	14.3	10.8
	12-Dec	28.0	35.7	24.2	15.1	10.2	38.8	27.0	-5.8	14.8	21.1	20.7	1.5	8.5	6.3	0.4	18.2	-3.5	4.0	20.8
	19-Dec	37.4	13.7	44.2	18.9	39.8	3.9	83.9	17.2	2.3	1.6	46.7	5.4	13.2	61.0	7.5	17.3	18.1	23.1	34.4
	26-Dec	-1.9	16.0	17.9	30.9	-5.7	24.7	-18.9	31.3	7.3	13.0	1.5	-6.7	5.7	4.5	0.6	6.9	1.7	10.3	16.4
	2-Jan	2.6	2.2	-1.6	7.3	3.6	30.2	33.6	10.9	1.1	7.5	3.5	3.5	28.2	-1.3	0.3	10.0	3.3	3.5	14.9
	9-Jan	36.2	NA	27.9	41.5	17.7	29.4	16.9	12.9	18.7	60.1	50.0	17.0	35.7	15.5	1.1	43.0	3.6	-1.2	35.7
	16-Jan	55.6	NA	11.8	49.5	19.3	17.1	20.2	26.3	2.5	13.1	10.4	7.5	58.8	2.3	4.4	16.7	0.7	72.9	60.4
	23-Jan	29.4	NA	58.8	12.2	9.1	10.6	6.7	20.1	6.7	5.0	46.0	21.5	97.5	37.3	20.8	-5.1	2.6	35.9	27.5
	30-Jan	52.9	NA	7.8	35.3	12.8	15.1	26.0	25.5	22.2	38.4	58.8	10.1	40.9	2.9	0.6	6.5	2.5	27.3	38.9
	6-Feb	39.1	NA	24.4	9.9	3.8	16.1	53.3	6.6	21.1	14.8	44.8	45.9	24.0	2.3	-3.3	4.4	3.2	16.8	13.1
	13-Feb	42.0	92.1	42.9	12.7	12.7	10.9	11.7	28.9	25.2	1.0	46.7	46.1	26.9	1.8	4.3	7.2	2.7	23.4	26.6
	20-Feb	5.6	10.6	16.6	28.7	3.2	14.2	1.6	4.8	4.8	16.0	40.2	8.5	25.7	-8.9	0.2	7.4	-4.1	46.1	26.1
	27-Feb	43.5	8.1	34.0	8.4	0.9	5.6	16.9	-19.7	15.5	2.1	15.9	13.6	6.8	8.0	22.5	1.5	-2.1	32.8	23.8
	5-Mar	24.7	14.0	31.6	-35.8	35.1	4.6	7.1	6.0	5.1	14.2	-9.4	24.8	29.1	2.2	17.5	-3.0	4.8	-7.0	12.2
	12-Mar	18.9	5.6	36.5	15.3	17.5	8.1	2.0	19.6	38.1	-9.8	18.4	-8.0	23.8	10.1	4.0	1.7	2.1	14.7	8.0
	19-Mar	55.9	11.7	34.6	12.5	24.4	22.4	4.0	12.6	3.5	14.1	13.0	48.6	42.0	-7.8	9.4	6.9	6.3	17.4	21.6
	26-Mar	67.0	36.7	43.5	22.4	18.2	20.5	6.2	-4.6	-3.5	-1.1	14.0	62.0	55.8	13.8	-0.9	7.5	-2.9	17.3	-1.7
	2-Apr	25.1	33.8	22.0	18.6	-7.6	11.9	3.4	7.7	2.1	8.8	6.8	6.9	17.1	3.4	0.7	1.8	-3.2	19.5	0.2
	9-Apr	21.2	24.2	28.0	33.2	2.1	4.5	5.5	8.2	23.9	0.6	13.5	14.7	7.3	0.9	2.8	7.0	2.9	1.9	0.0
	16-Apr	21.4	19.6	11.2	-2.0	10.7	4.4	5.7	1.7	0.7	24.0	-1.9	57.8	25.1	16.6	8.5	6.4	1.0	-15.3	3.7
	23-Apr	29.8	7.3	44.5	10.6	9.6	7.3	0.5	1.1	14.9	3.9	2.0	31.1	8.9	3.5	1.2	3.3	0.3	8.5	3.0
	30-Apr	18.9	16.4	45.4	29.0	10.0	15.6	7.7	0.9	30.1	2.0	10.3	34.6	11.9	-5.9	1.9	5.2	0.1	9.1	19.4
	7-May	6.7	10.8	10.2	14.9	16.7	7.3	1.8	-5.3	8.1	2.6	3.2	20.2	10.8	3.5	-1.4	2.0	0.2	8.6	50.0
	14-May	62.1	9.1	17.7	10.0	89.5	9.9	41.3	9.6	9.4	0.5	3.5	3.5	46.4	2.6	9.5	-0.5	0.5	9.6	6.8
	21-May																			
	28-May																			
	4-Jun																			
	11-Jun																			
	18-Jun																			
	25-Jun																			
Crop year to date sales	1084.2	705.9	872.1	886.4	855.8	695.6	634.8	837.1	420.5	1177.6	1174.9	677.2	1004.9	401.2	277.5	384.5	228.5	690.5	690.3	
Average weekly sales																				
rate to reach proj total	3.8	9.3	12.5	14.5	8.6	11.6	11.5	7.7	12.9	15.3	18.5	16.8	16.7	23.9	13.0	11.5	10.4	17.8	24.0	
Proj./Actual export total (MT)	1157	880	1108	1159	1017	914	851	982	664	1466	1524	995	1320	851	523	601	425	1026	1143	
YTD sales as % of total	93.7	80.2	78.7	76.5	84.1	76.1	74.6	85.3	63.3	80.3	77.1	68.1	76.1	47.1	53.1	64.0	53.8	67.3	60.4	

Source: Futures International and USDA

U.S. Wheat Export Sales for the Week Ending 05/14/2020

	(000 tons)									WKLY RATE TO REACH Proj.
	OUTSTANDING SALES			ACCUMULATED EXPORTS			Crop Year to Date Sales			
	NET SALES	CURRENT YEAR	YEAR AGO	WEEKLY EXPORTS	CURRENT YEAR	YEAR AGO	CURRENT YEAR	YEAR AGO	USDA PROJ.	
HRW	52.7	1170.2	1306.7	127.0	8768.4	8011.9	9938.6	9318.6	10070.8	71.2
SRW	7.9	193.8	262.8	12.0	2254.9	3098.8	2448.7	3361.6	2585.7	73.8
HRS	81.8	1185.7	595.5	137.6	6688.9	6511.5	7874.6	7107.0	7485.0	-209.8
WHITE	33.4	742.1	490.8	91.4	4567.8	4933.1	5309.9	5423.9	5171.5	-74.5
DURUM	0.0	100.8	27.9	0.0	883.3	476.0	984.1	503.9	1088.7	56.3
TOTAL	175.8	3392.6	2683.7	368.0	23163.3	23031.4	26555.9	25715.1	26401.7	-83.0

Source: Futures International and USDA

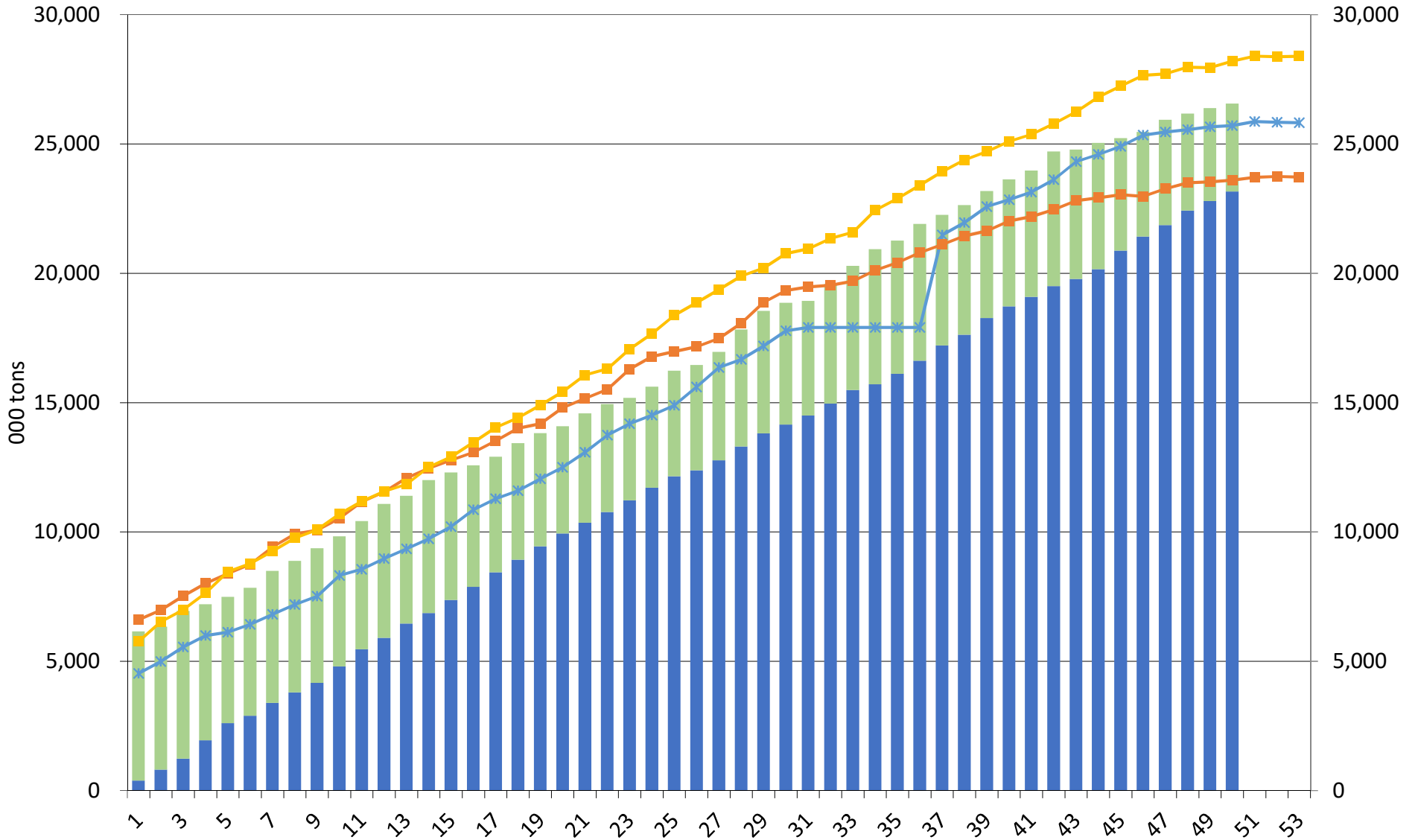
U.S. Wheat Export Sales for the Week Ending 05/14/2020

	(bushels)									WKLY RATE TO REACH Proj.
	OUTSTANDING SALES			ACCUMULATED EXPORTS			Crop Year to Date Sales			
	NET SALES	CURRENT YEAR	YEAR AGO	WEEKLY EXPORTS	CURRENT YEAR	YEAR AGO	CURRENT YEAR	YEAR AGO	USDA PROJ.	
HRW	1.9	43.0	48.0	4.7	322.2	294.4	365.2	342.4	370	2.6
SRW	0.3	7.1	9.7	0.4	82.9	113.9	90.0	123.5	95	2.7
HRS	3.0	43.6	21.9	5.1	245.8	239.3	289.3	261.1	275	-7.7
WHITE	1.2	27.3	18.0	3.4	167.8	181.3	195.1	199.3	190	-2.7
DURUM	0.0	3.7	1.0	0.0	32.5	17.5	36.2	18.5	40	2.1
TOTAL	6.5	124.7	98.6	13.5	851.1	846.3	975.8	944.9	970	-3.1

Source: Futures International and USDA

US Wheat Current Crop-Year Commitments

Thousand Tons, Sept-Aug Crop-Year

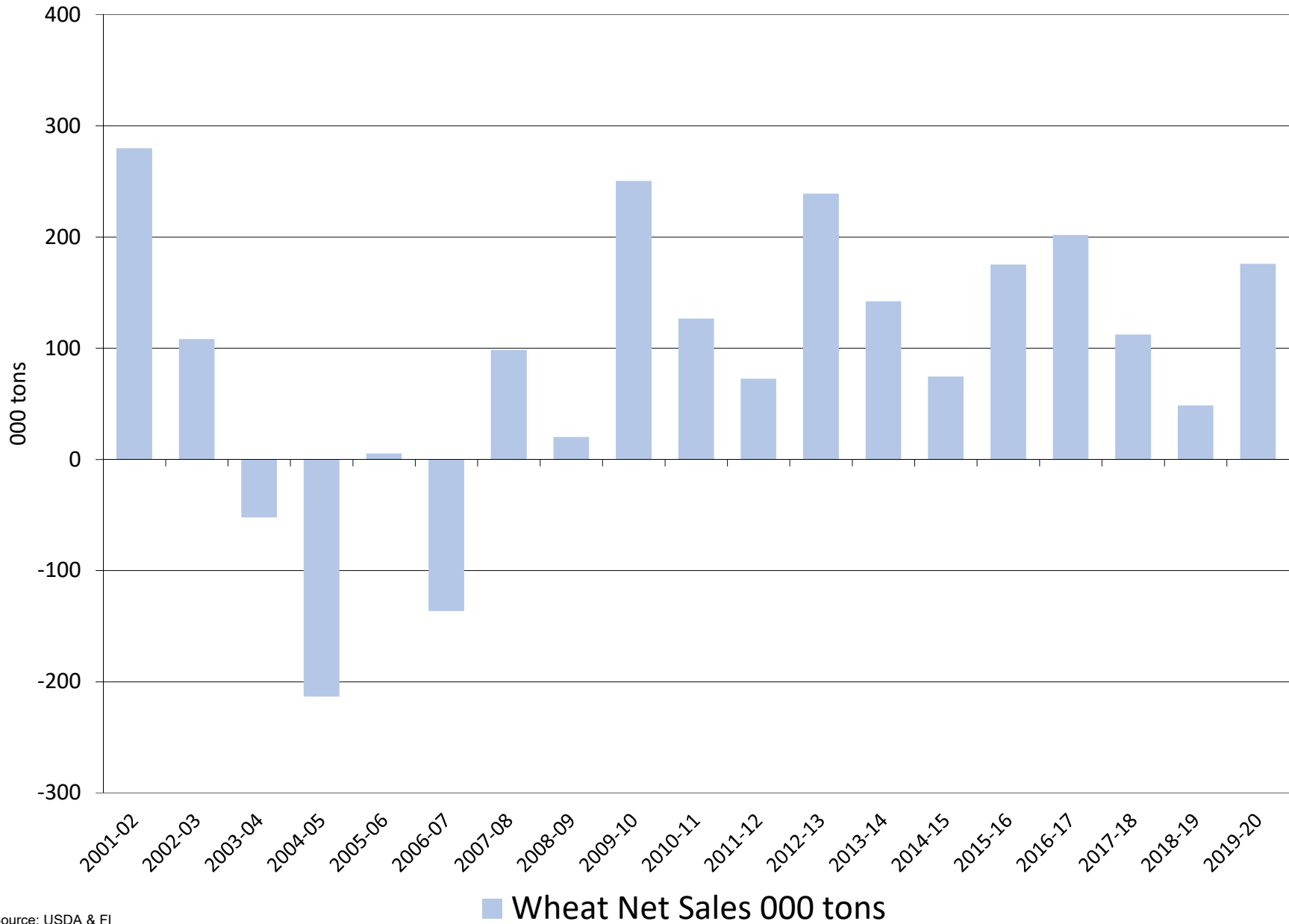


Source: USDA & FI

Weeks, 1=Sep 7, etc.

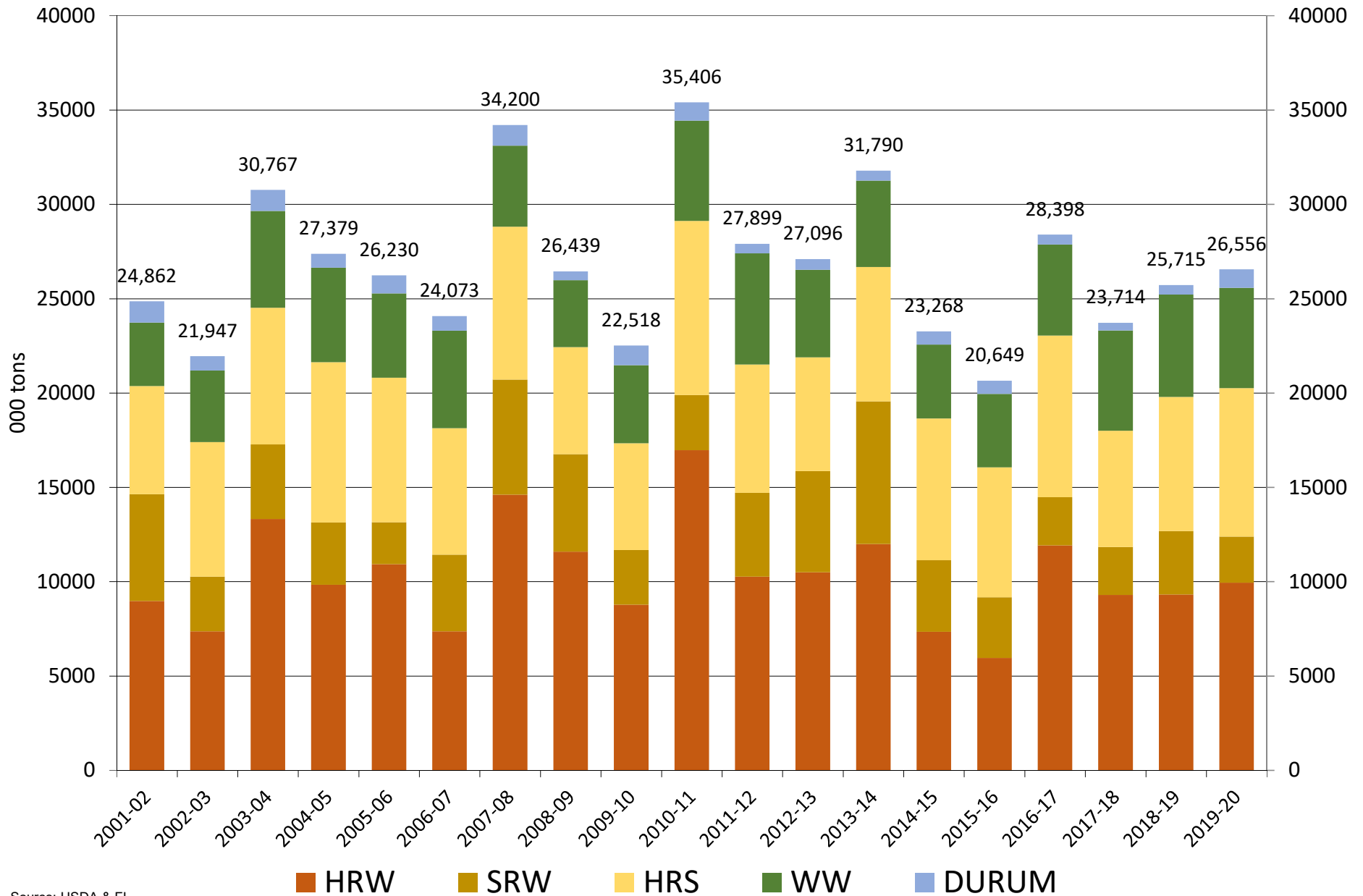
■ Accumulated Exports
 ■ Outstanding Sales
 —* 2018-19
 —■ 2017-18
 —■ 2016-17

US all wheat export sales for the week ending on or near 05/17/2020



Source: USDA & FI

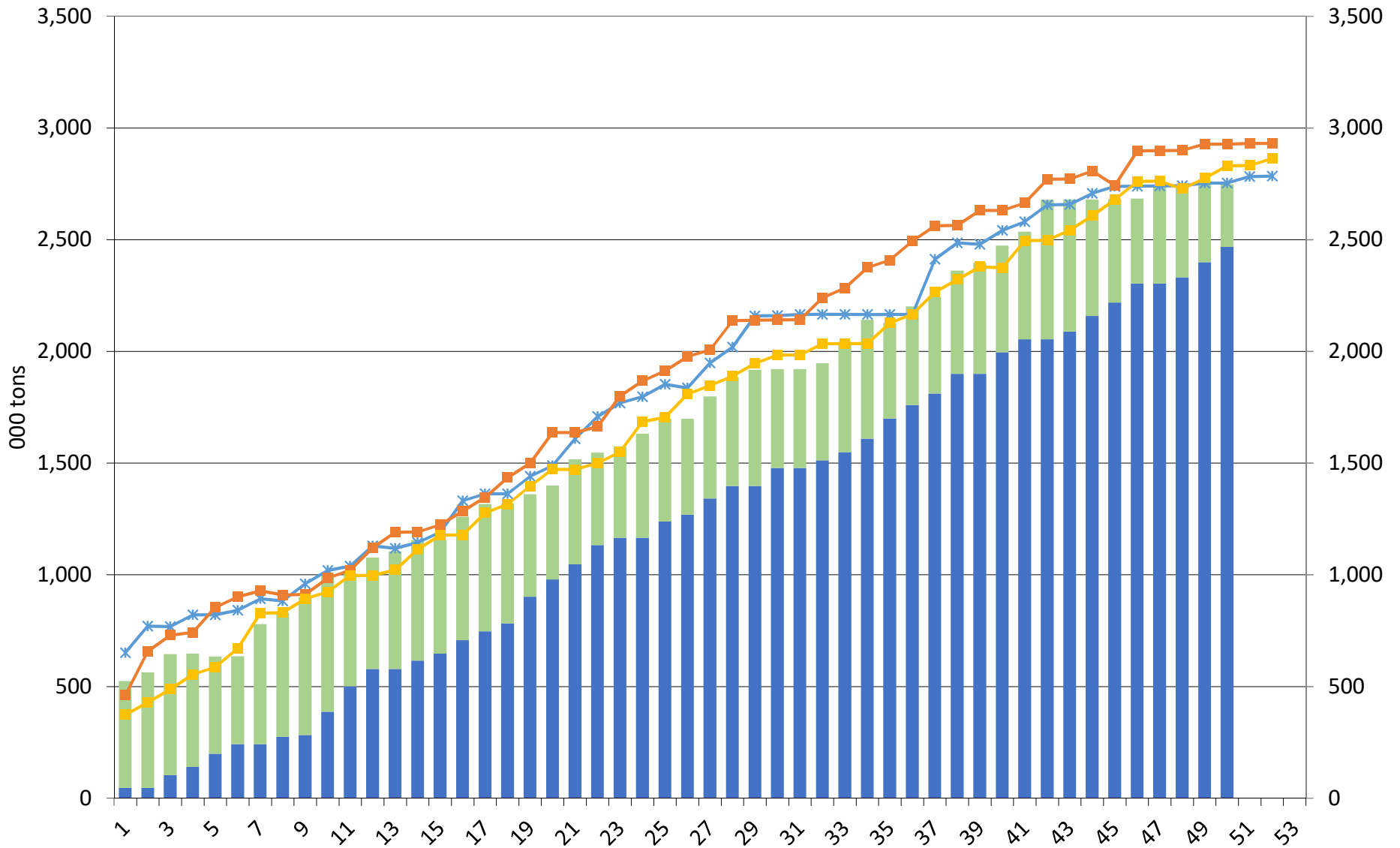
US all wheat export commitments on or near 05/17/2020



Source: USDA & FI

US Wheat Current Crop-Year Commitments for Japan

Thousand Tons, Sept-Aug Crop-Year



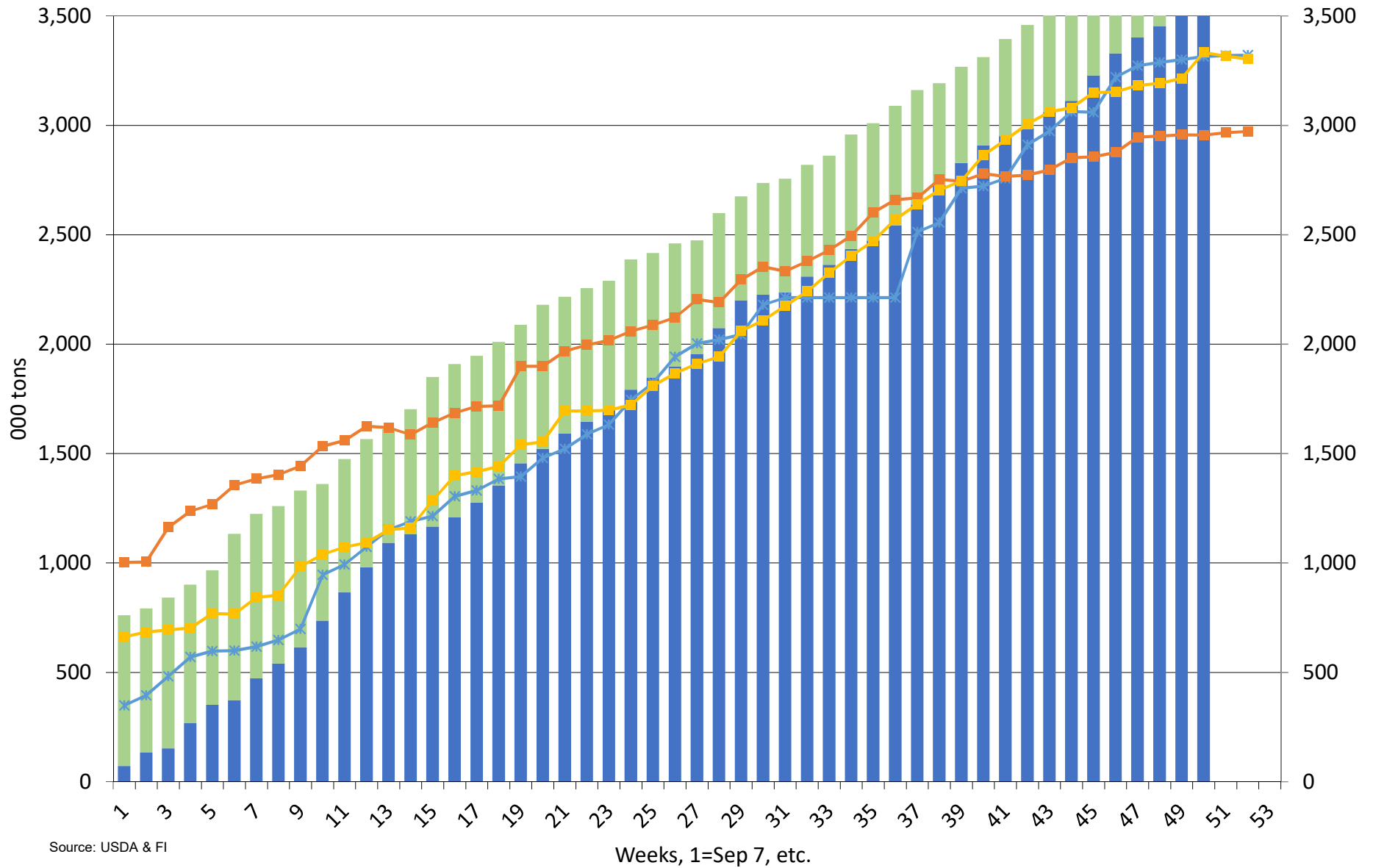
Source: USDA & FI

Weeks, 1=Sep 7, etc.

■ Accumulated Exports
 ■ Outstanding Sales
 *— 2018-19
 —■ 2017-18
 —■ 2016-17

US Wheat Current Crop-Year Commitments for Mexico

Thousand Tons, Sept-Aug Crop-Year



Source: USDA & FI

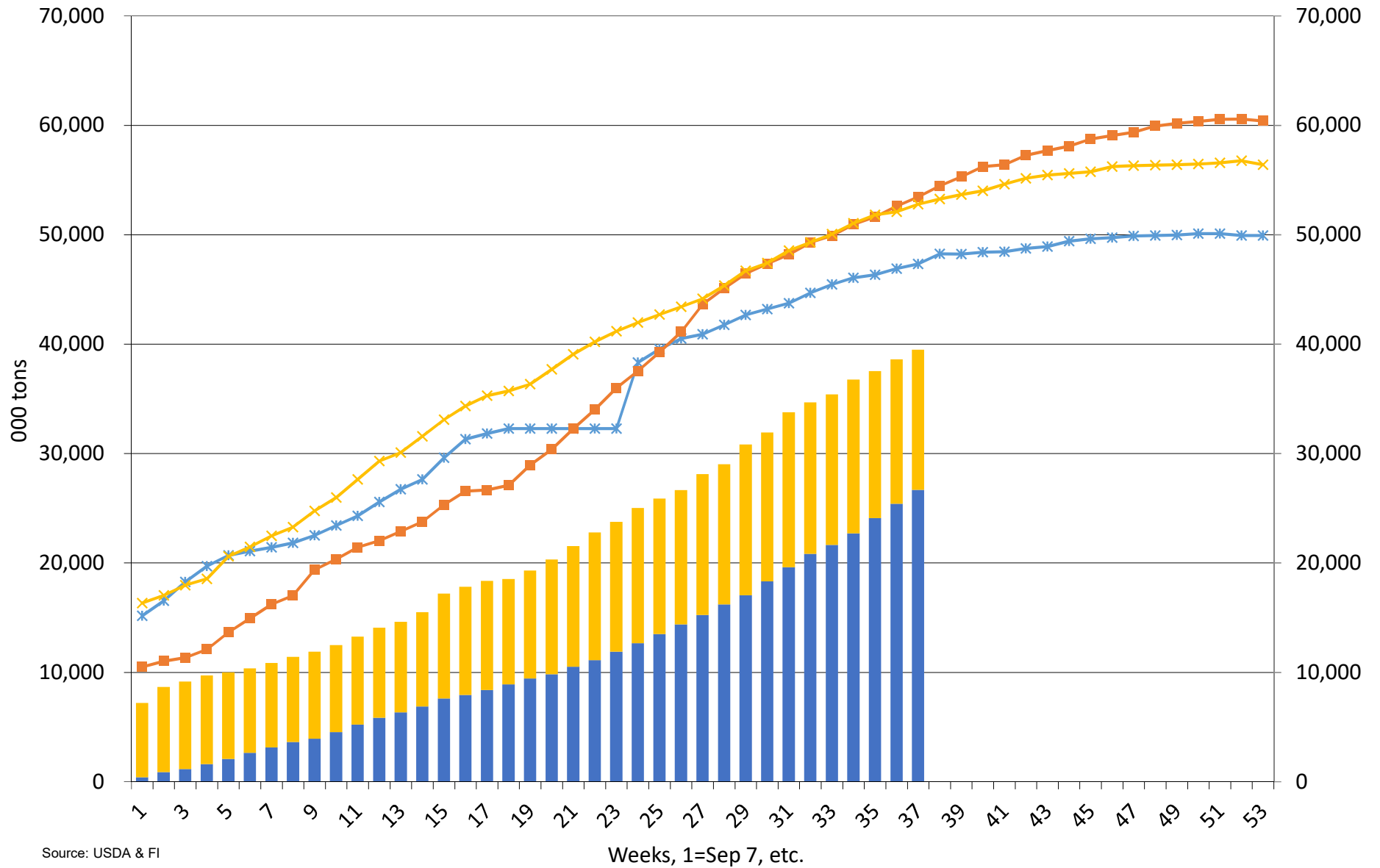
Weeks, 1=Sep 7, etc.

■ Accumulated Exports
 ■ Outstanding Sales
 *— 2018-19
 —■ 2017-18
 —■ 2016-17

Source: USDA and FI

US Corn Current Crop-Year Commitments

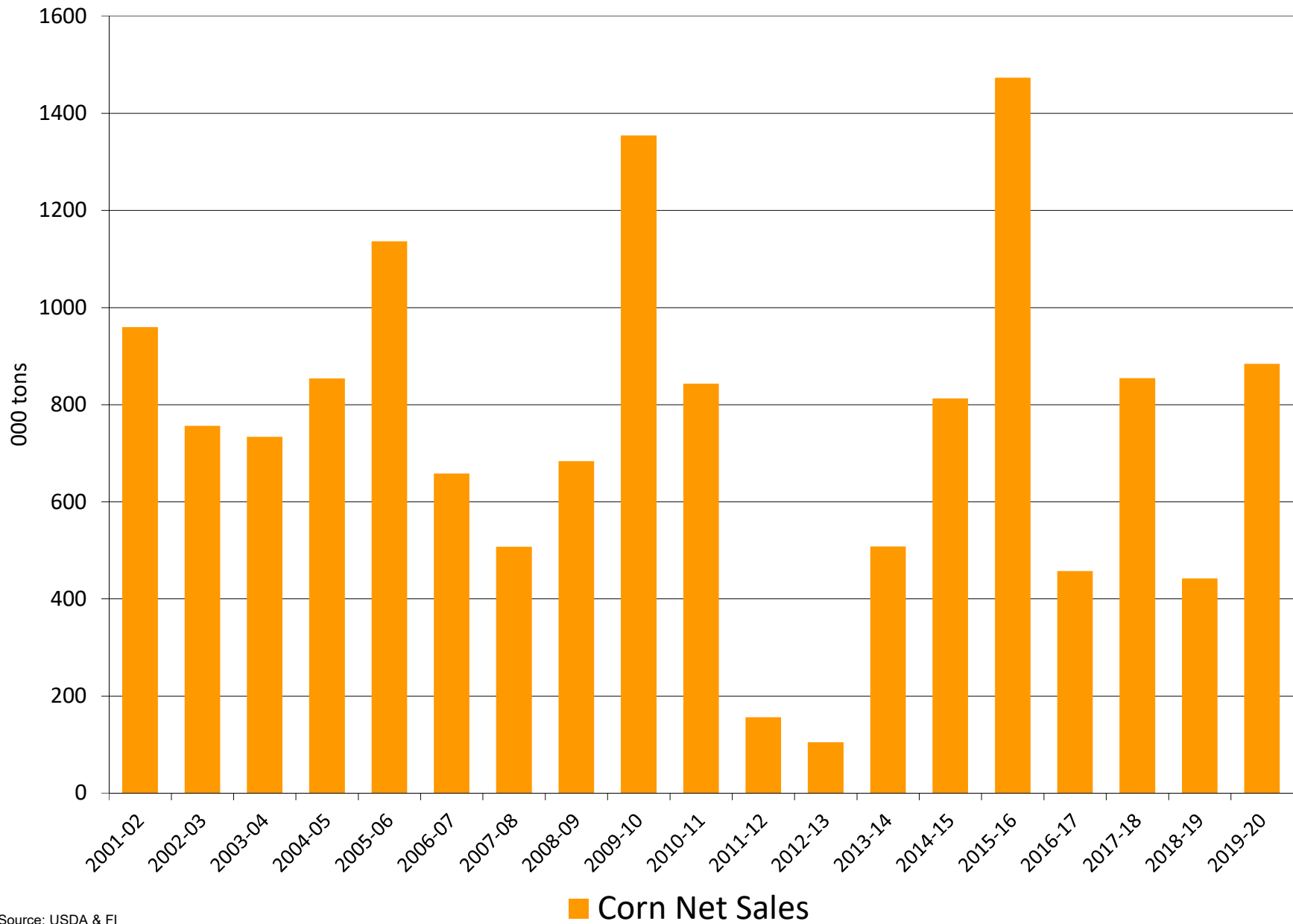
Thousand Tons, Sept-Aug Crop-Year



Source: USDA & FI

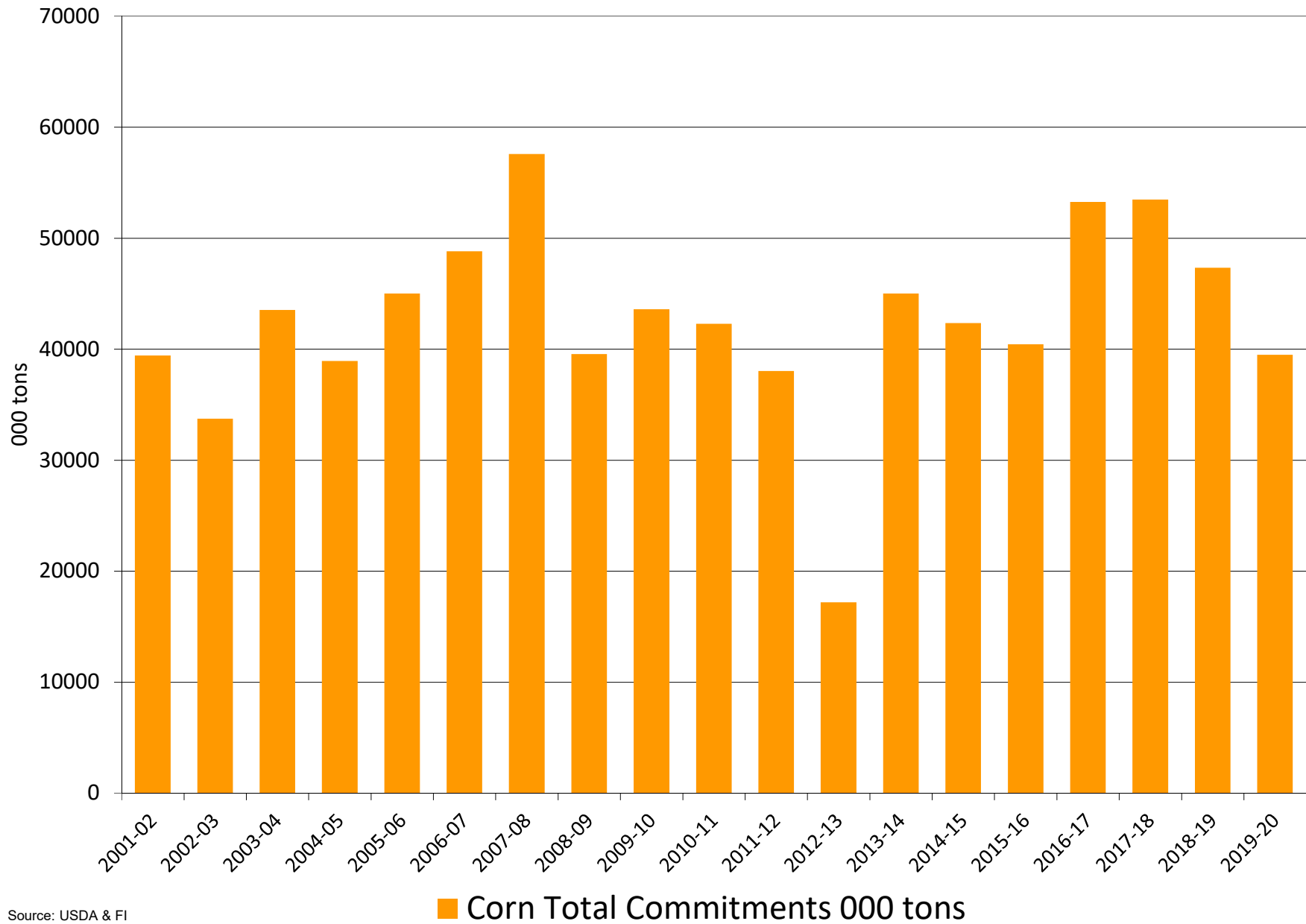
■ Accumulated Exports ■ Outstanding Sales * 2018-19 ■ 2017-18 * 2016-17

US corn export sales for the week ending on or near 05/17/2020



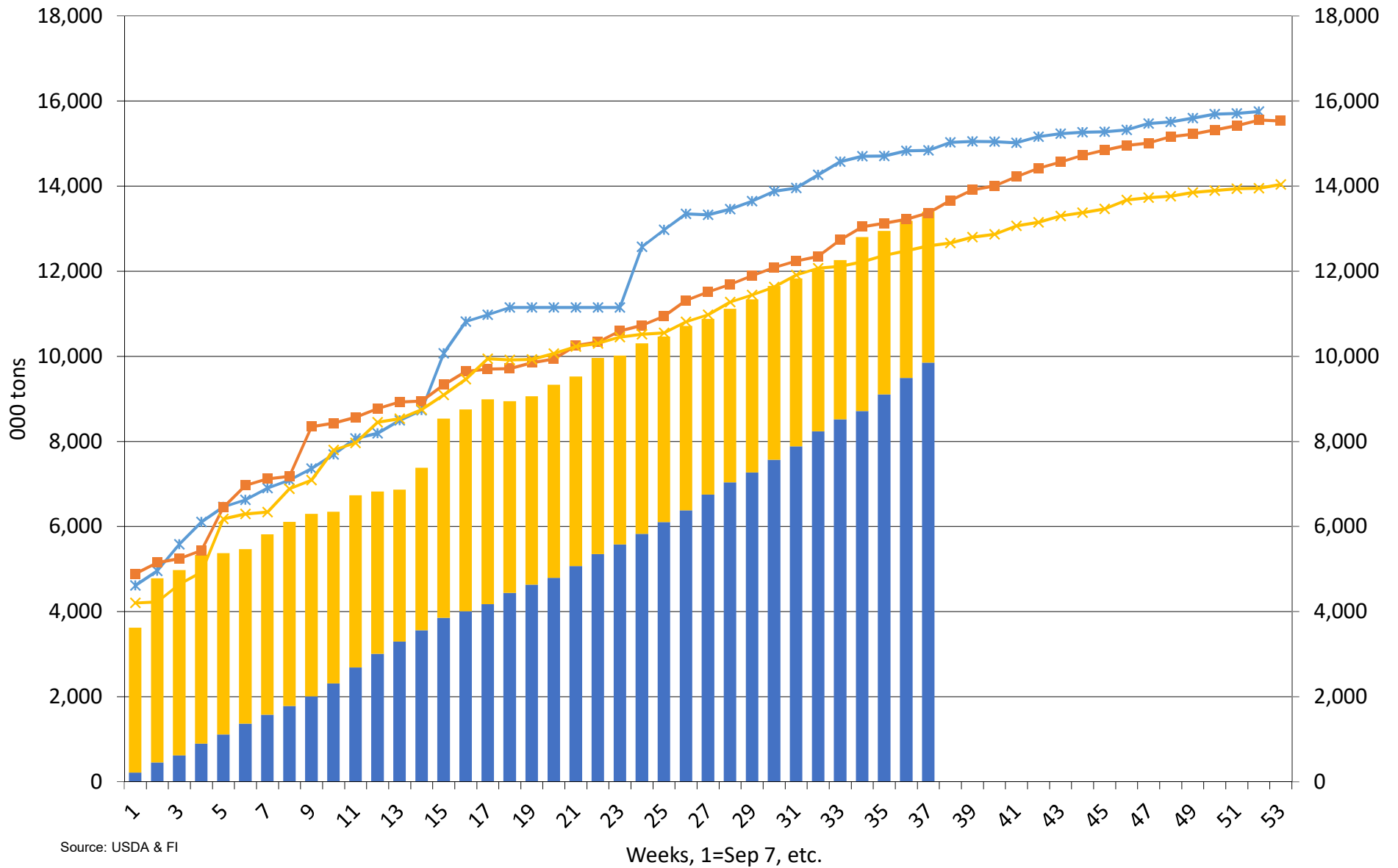
Source: USDA & FI

US corn export commitments on or near 05/17/2020



US Corn Current Crop-Year Commitments to Mexico

Thousand Tons, Sept-Aug Crop-Year



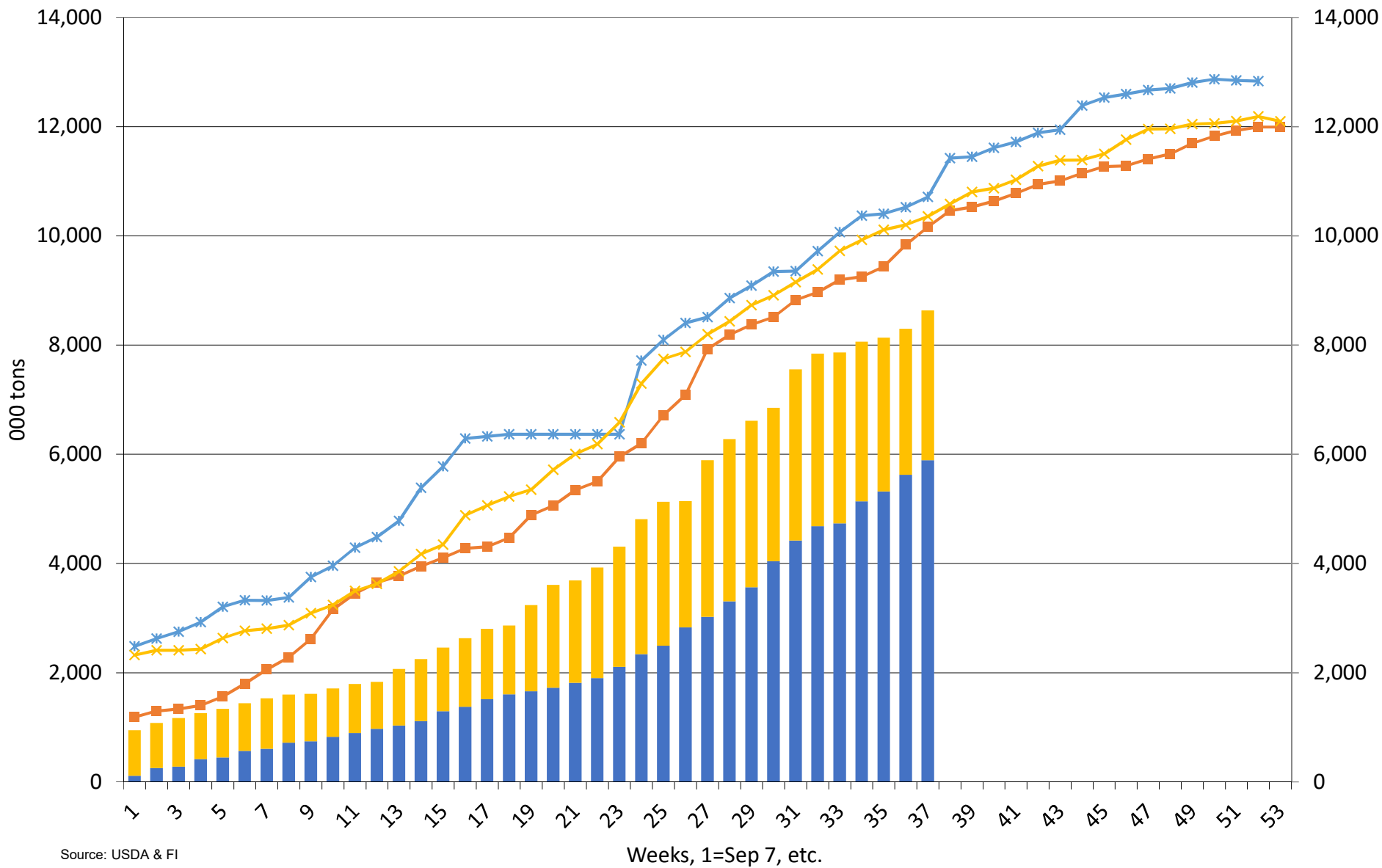
Source: USDA & FI

Weeks, 1=Sep 7, etc.

■ Accumulated Exports
 ■ Outstanding Sales
 * 2018-19
 ■ 2017-18
 * 2016-17

US Corn Current Crop-Year Commitments to Japan

Thousand Tons, Sept-Aug Crop-Year

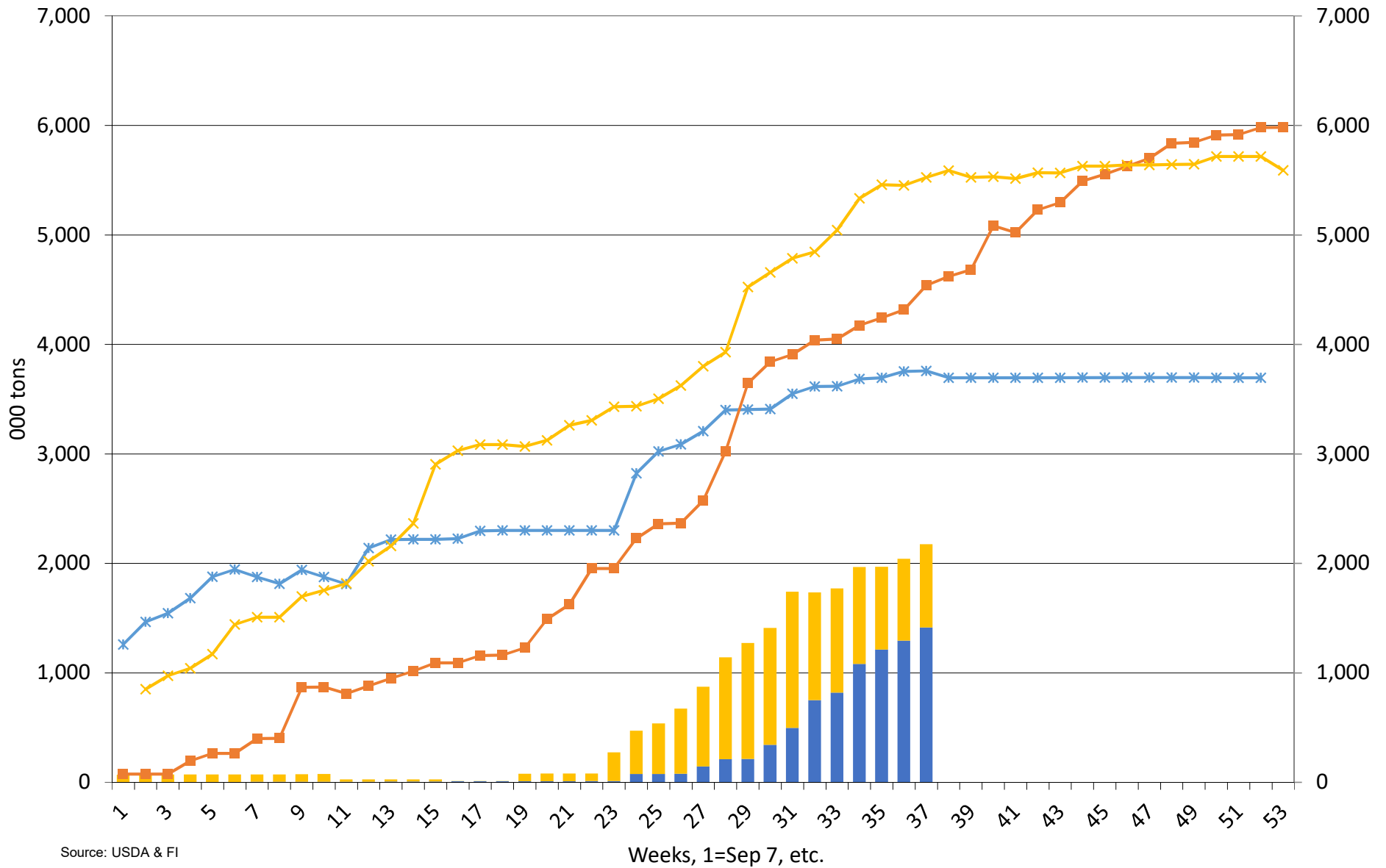


Source: USDA & FI

■ Accumulated Exports
 ■ Outstanding Sales
 *— 2018-19
 —■ 2017-18
 —x 2016-17

US Corn Current Crop-Year Commitments to South Korea

Thousand Tons, Sept-Aug Crop-Year

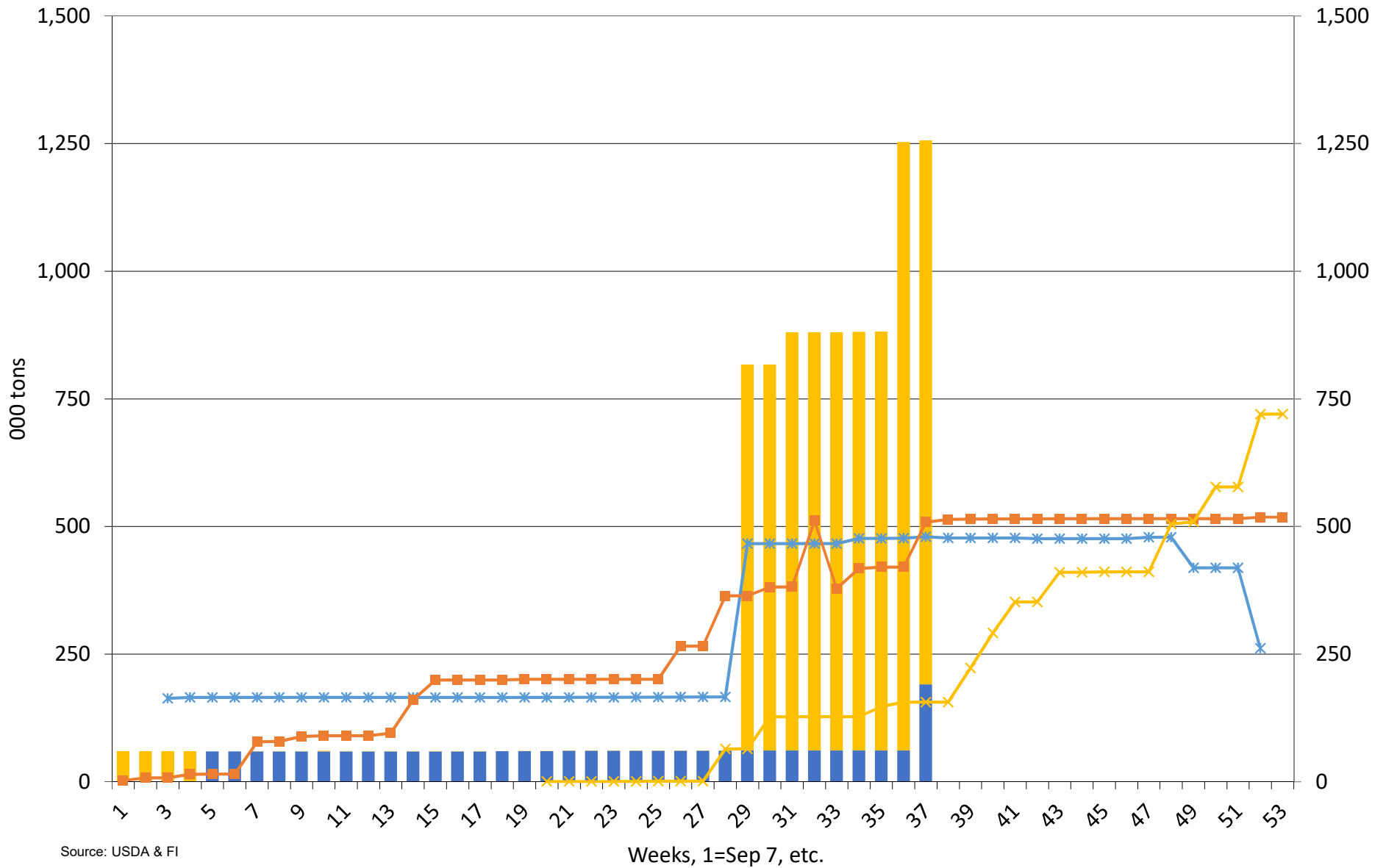


Source: USDA & FI

■ Accumulated Exports
 ■ Outstanding Sales
 —* 2018-19
 —■ 2017-18
 —* 2016-17

US Corn Current Crop-Year Commitments to China

Thousand Tons, Sept-Aug Crop-Year

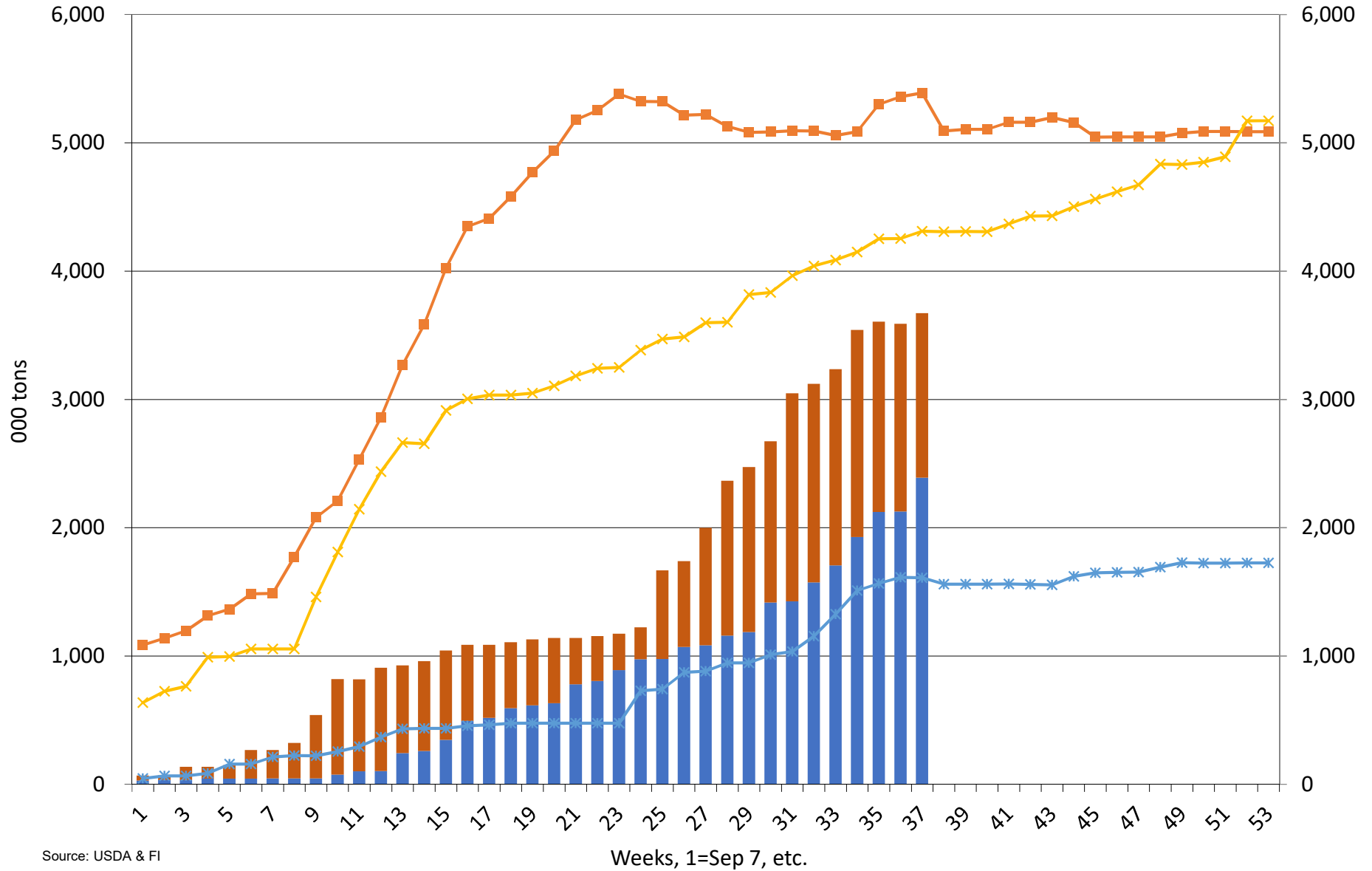


Source: USDA & FI

■ Accumulated Exports
 ■ Outstanding Sales
 —* 2018-19
 —■ 2017-18
 —x 2016-17

Source: USDA and FI

US Sorghum Current Crop-Year Commitments Thousand Tons, Sept-Aug Crop-Year



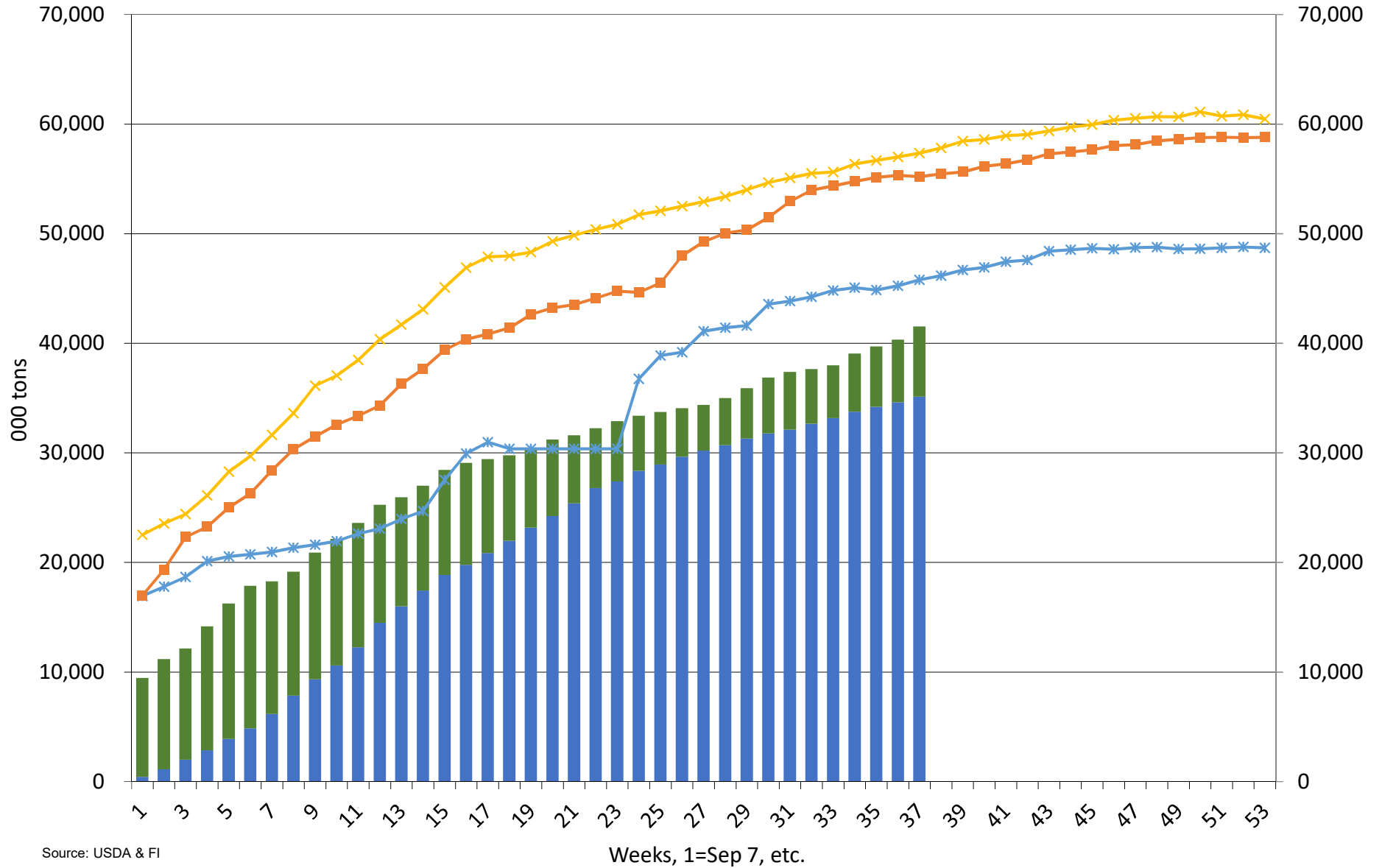
Source: USDA & FI

■ Accumulated Exports ■ Outstanding Sales * 2018-19 ■ 2017-18 * 2016-17

Source: USDA and FI

US Soybean Current Crop-Year Commitments

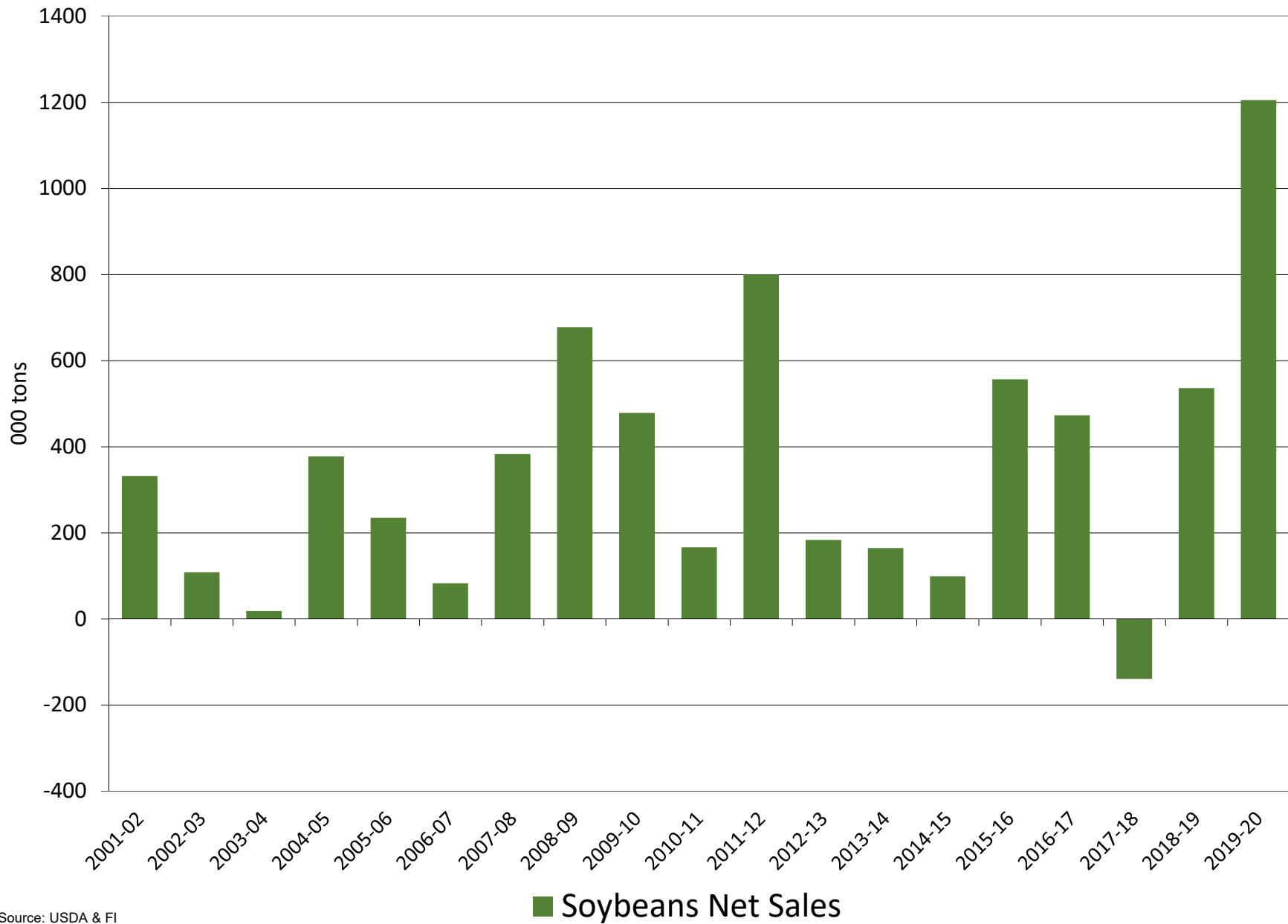
Thousand Tons, Sept-Aug Crop-Year



Source: USDA & FI

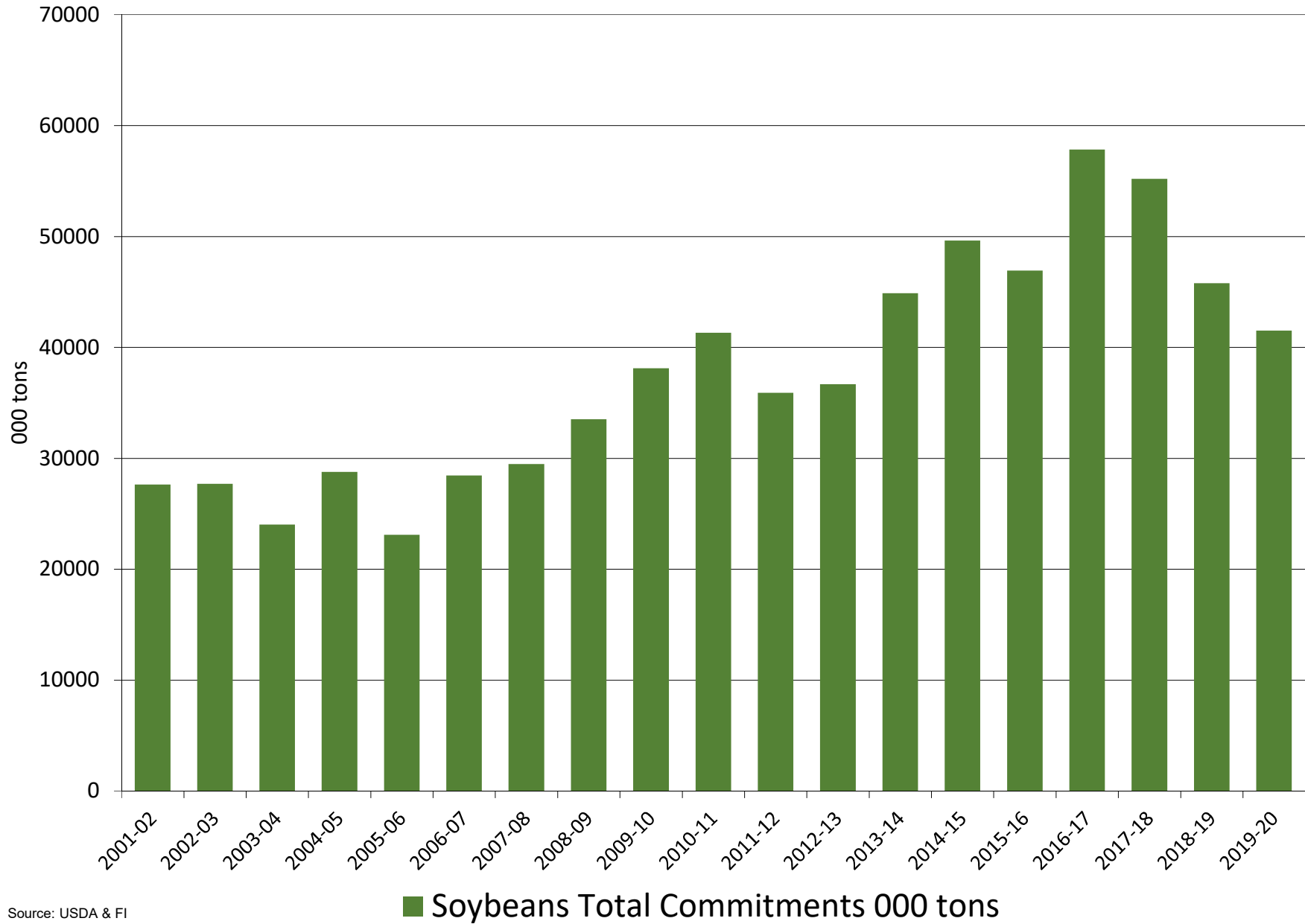
■ Accumulated Exports ■ Outstanding Sales * 2018-19 ■ 2017-18 * 2016-17

US soybean export sales for the week ending on or near 05/17/2020



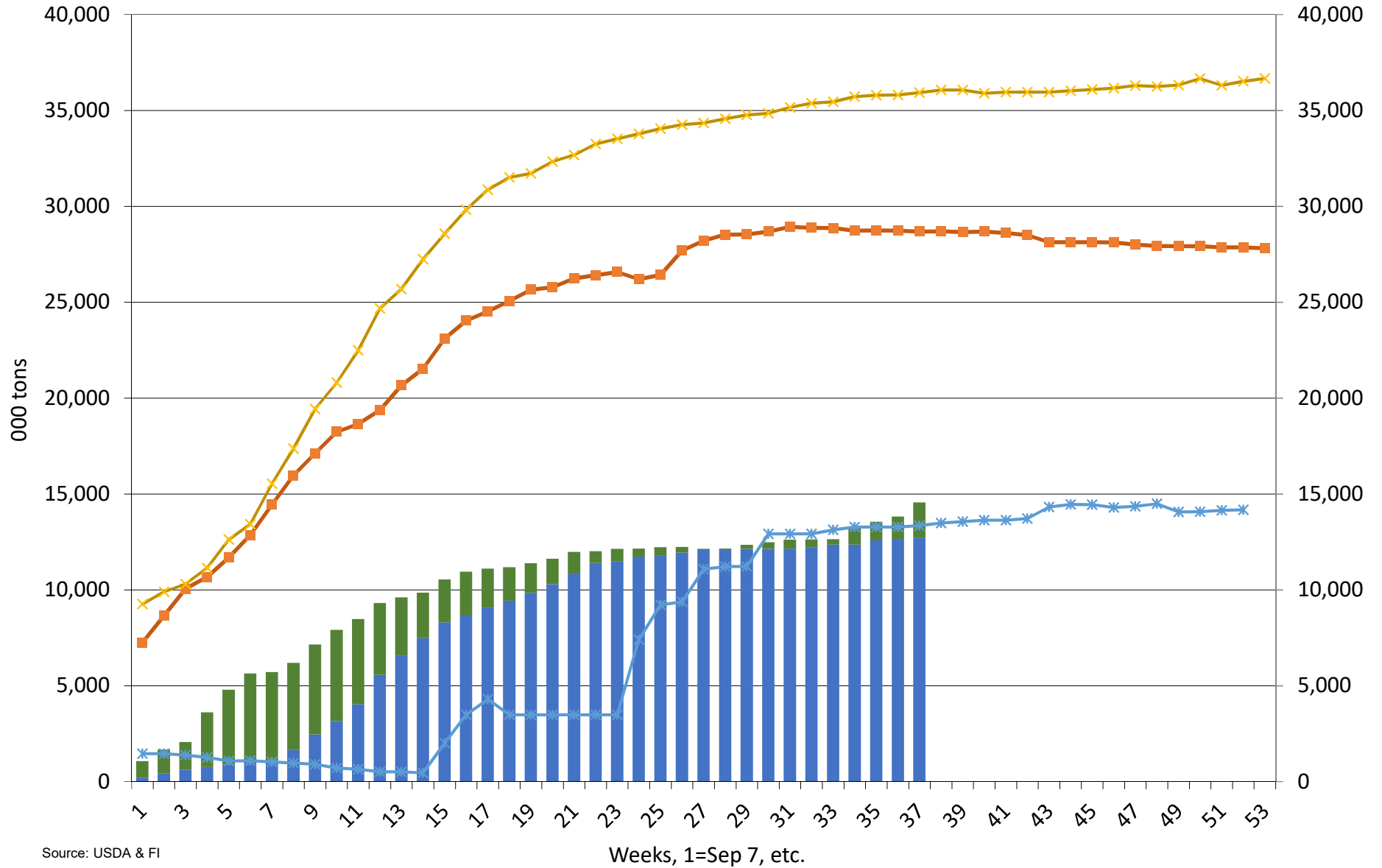
Source: USDA & FI

US soybean export commitments on or near 05/17/2020



Source: USDA and FI

US Soybean Current Crop-Year Commitments to China Thousand Tons, Sept-Aug Crop-Year

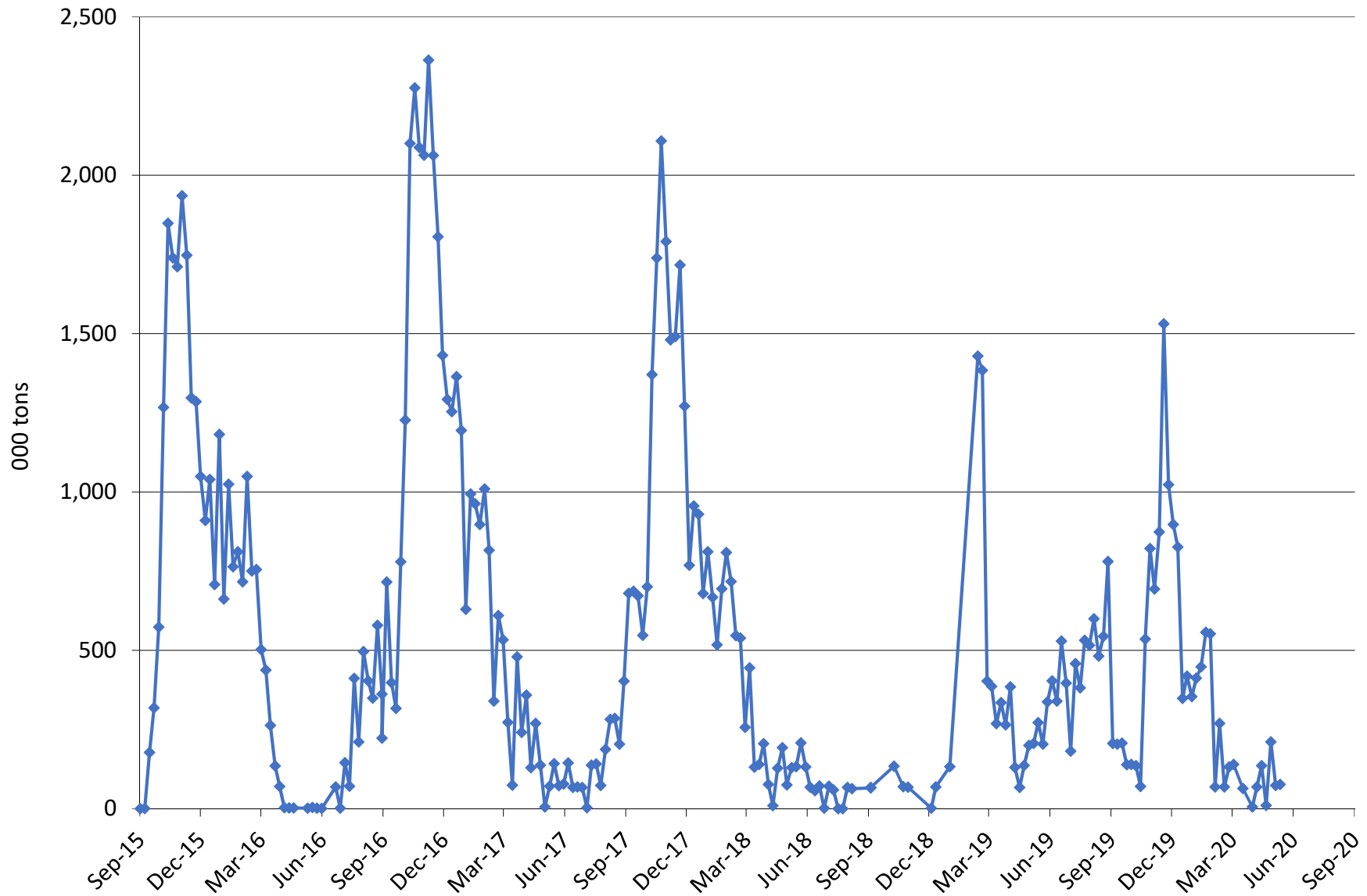


Source: USDA & FI

Accumulated Exports Outstanding Sales * 2018-19 ■ 2017-18 × 2016-17

Source: USDA and FI

US Soybean Current Crop-Year Exports to China Thousand Tons, Sept-Aug Crop-Year



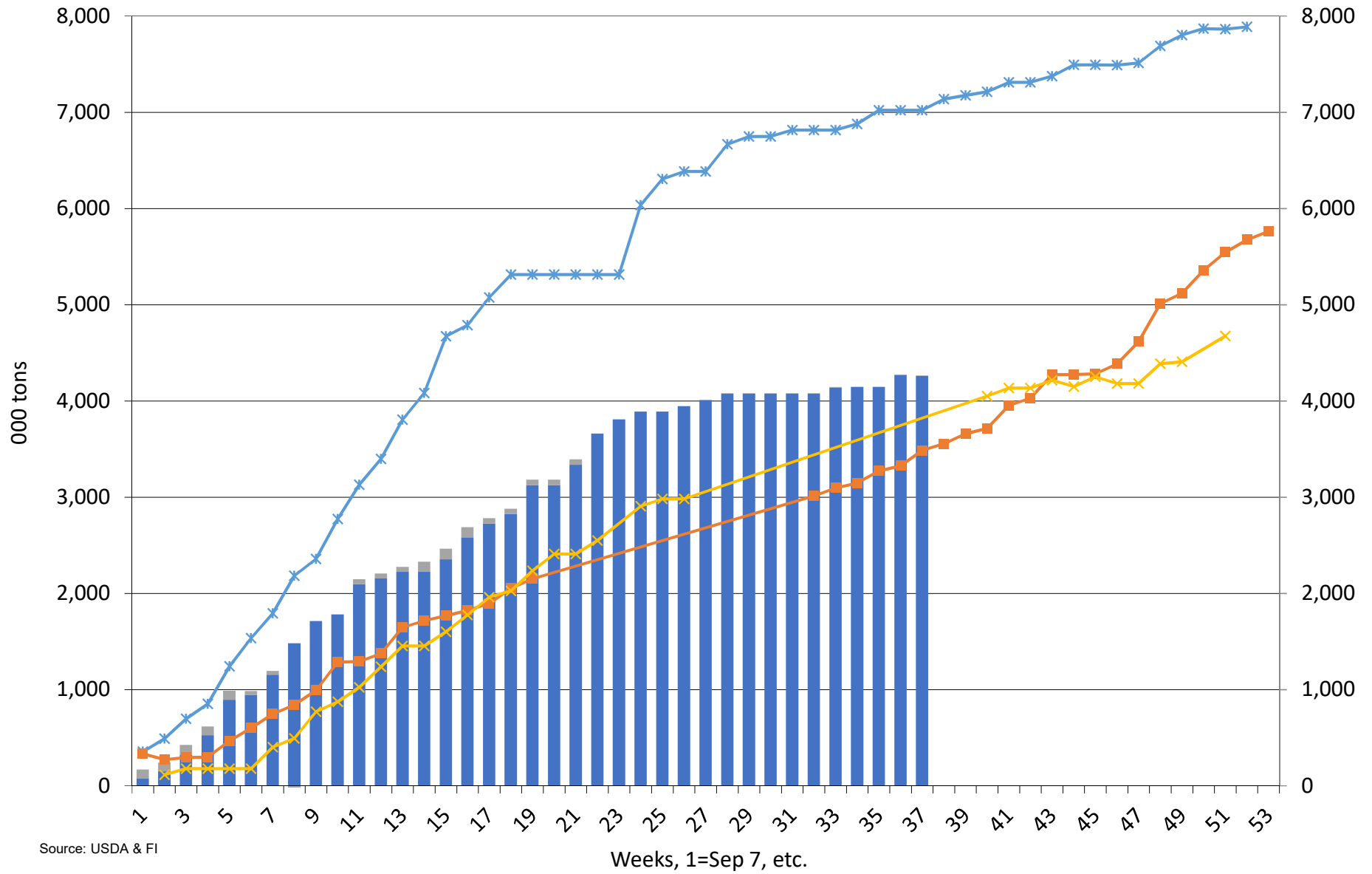
Source: USDA & FI

—◆— Accumulated Exports

Source: USDA and FI

US Soybean Current Crop-Year Commitments to EU

Thousand Tons, Sept-Aug Crop-Year

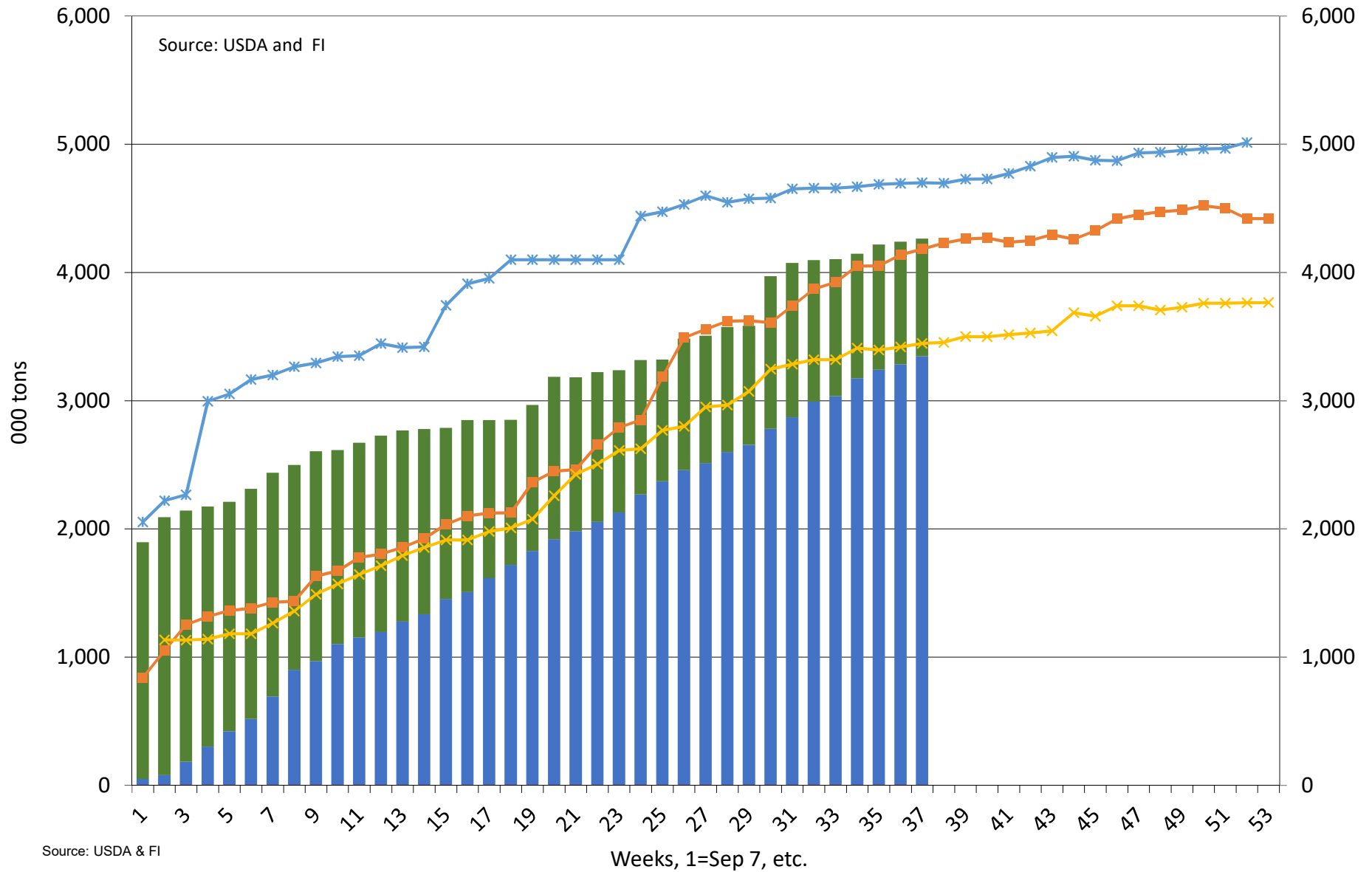


Source: USDA & FI

■ Accumulated Exports ■ Outstanding Sales * 2018-19 ■ 2017-18 * 2016-17

US Soybean Current Crop-Year Commitments to Mexico

Thousand Tons, Sept-Aug Crop-Year



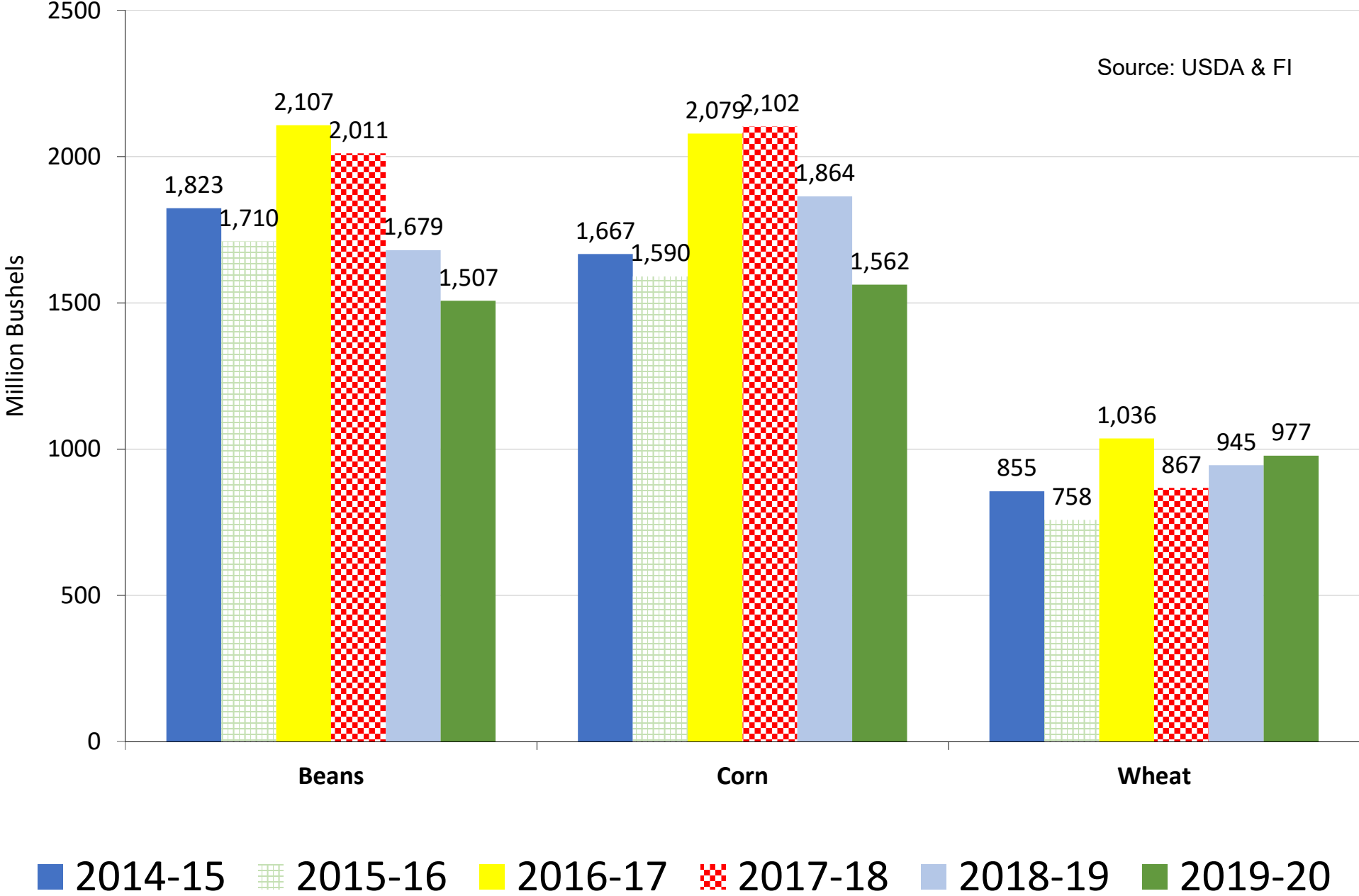
Source: USDA & FI

Weeks, 1=Sep 7, etc.

■ Accumulated Exports
 ■ Outstanding Sales
 —* 2018-19
 —■ 2017-18
 —x 2016-17

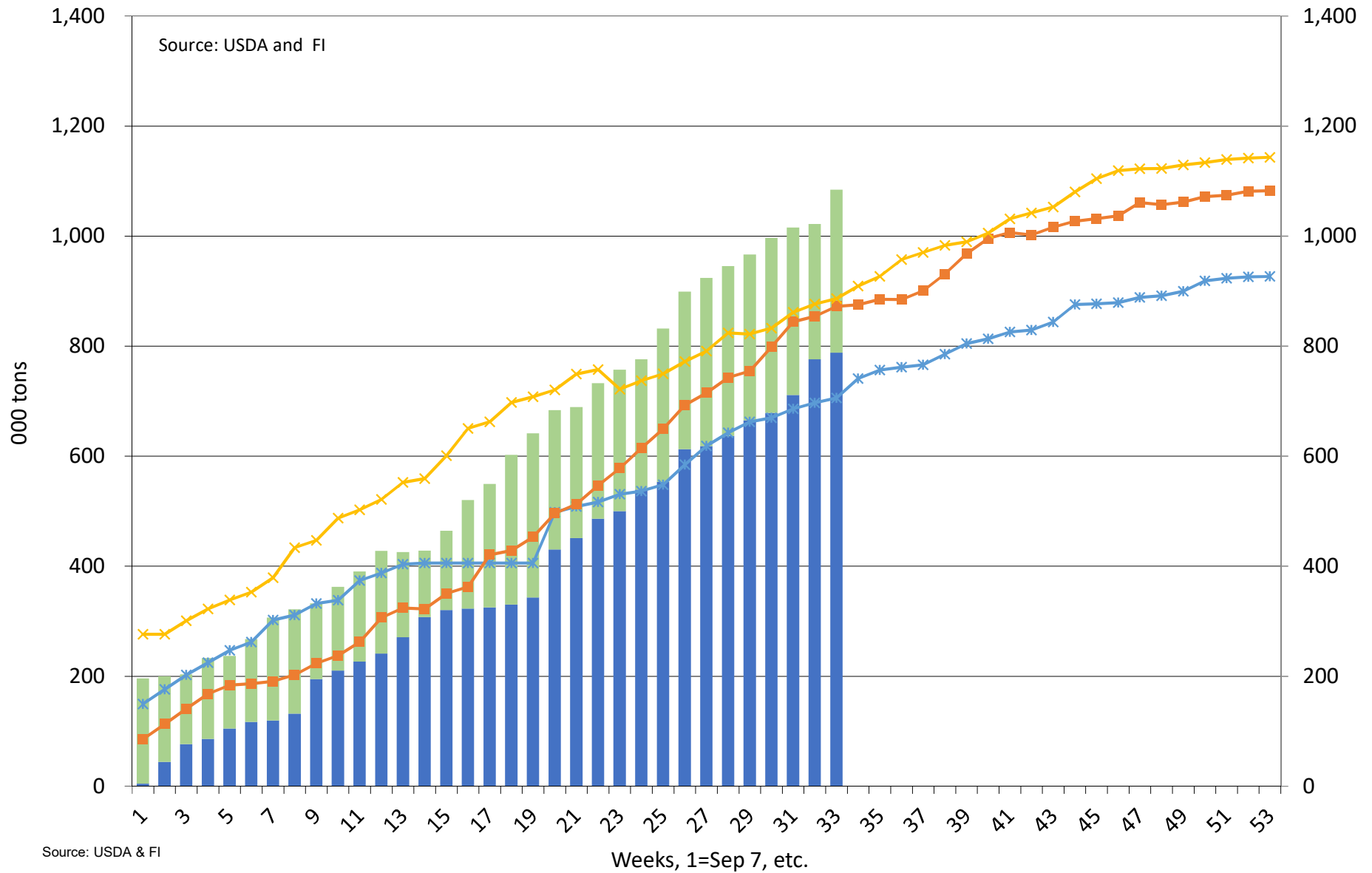
Crop year to date US export sales

Source: USDA & FI



US Soybean Oil Current Crop-Year Commitments

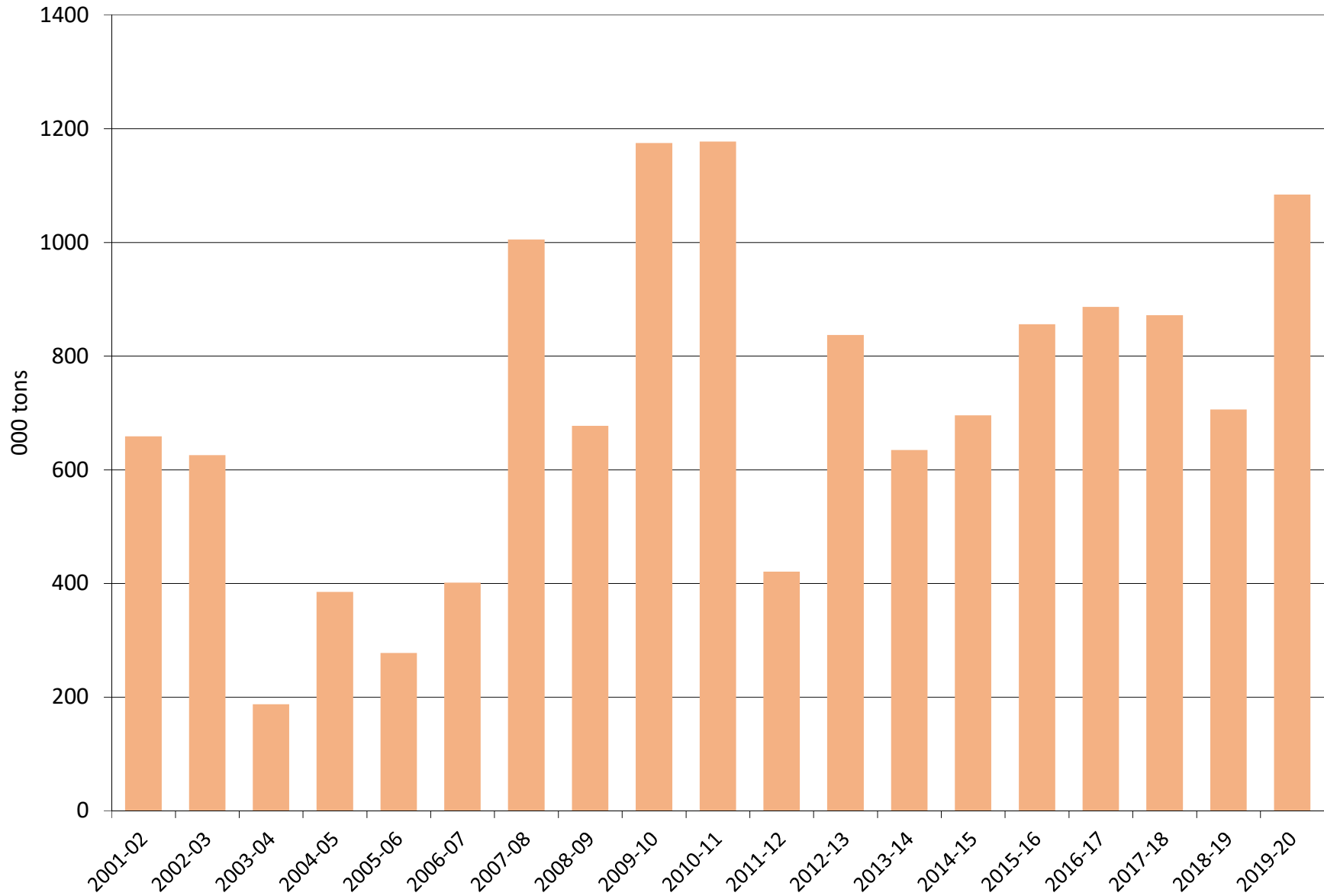
Thousand Tons, Sept-Aug Crop-Year



Source: USDA & FI

■ Accumulated Exports
 ■ Outstanding Sales
 —* 2018-19
 —■ 2017-18
 —x 2016-17

Soybean Oil Total Commitments 000 Metric Tons

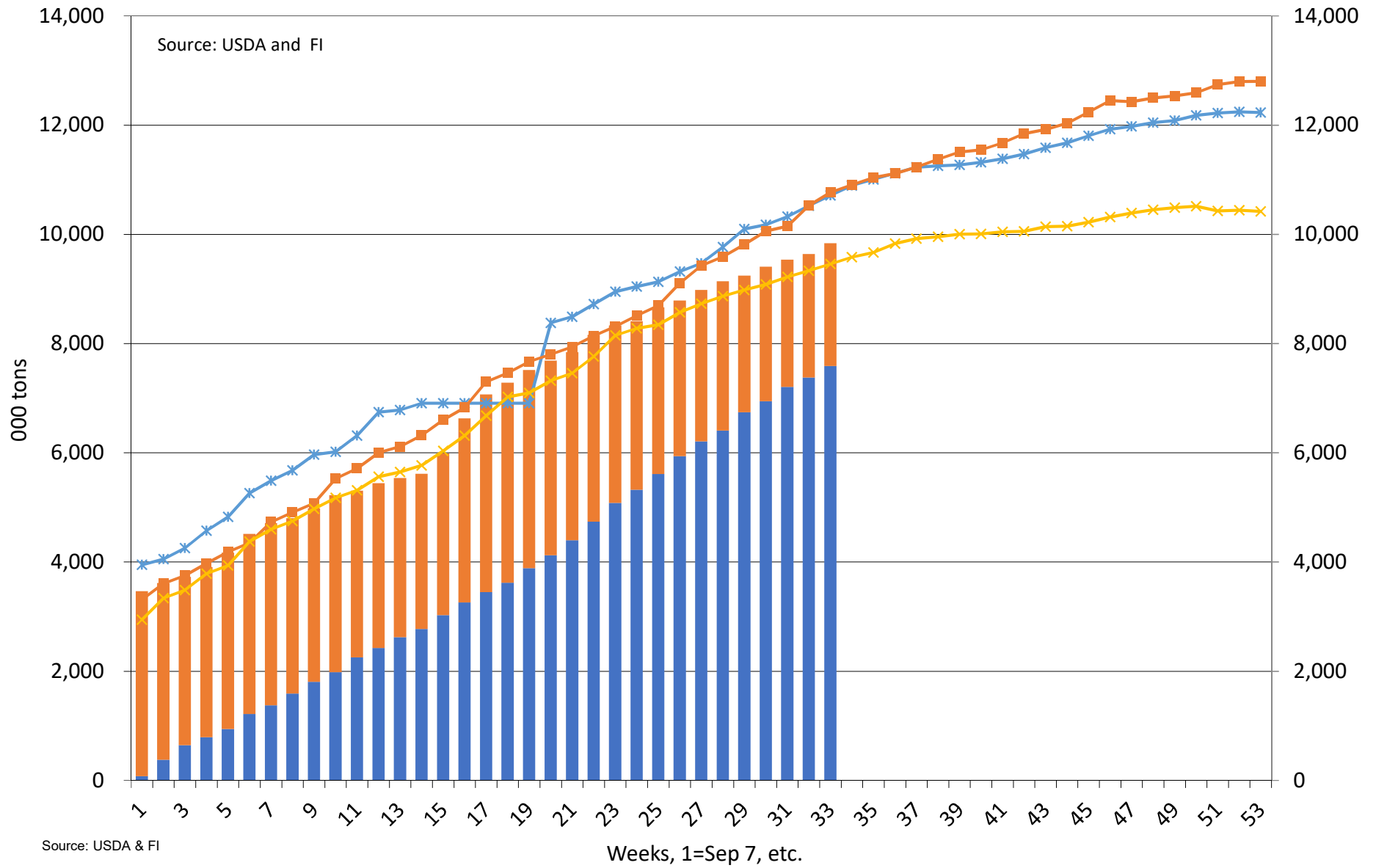


Source: USDA & FI

■ Soybean Oil Total Commitments 000 Metric Tons

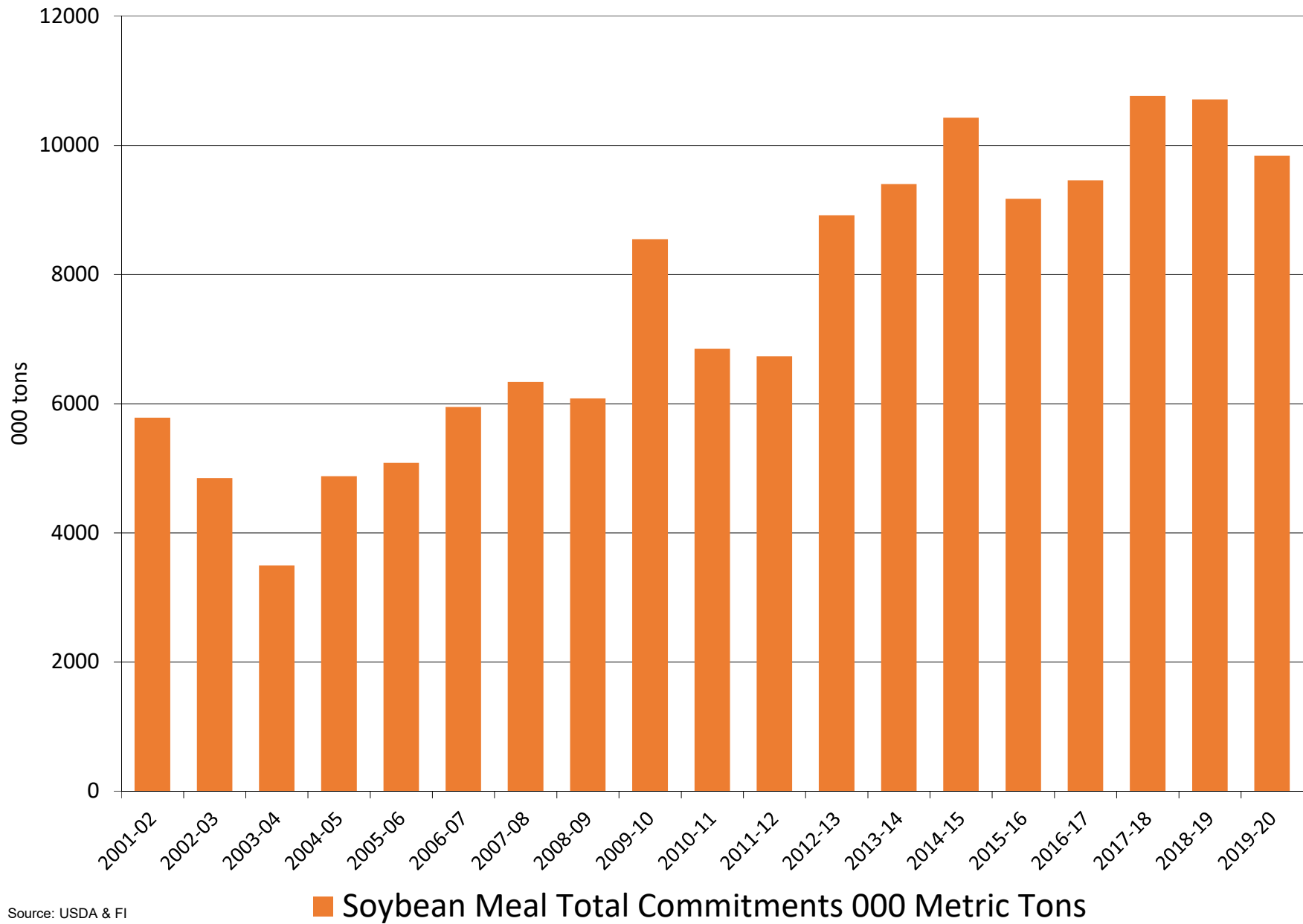
US Soybean Meal Current Crop-Year Commitments

Thousand Tons, Sept-Aug Crop-Year



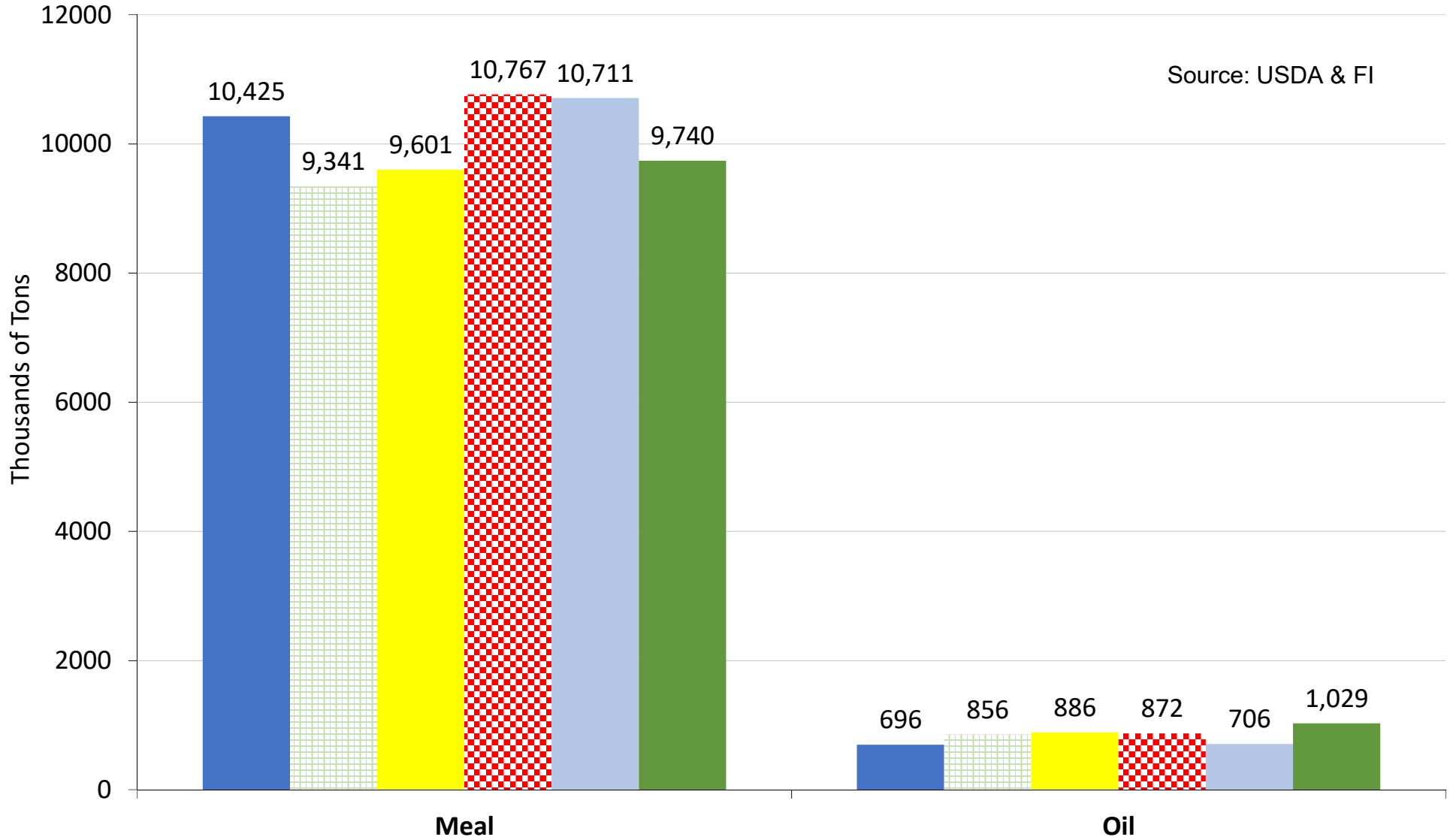
■ Accumulated Exports
 ■ Outstanding Sales
 —* 2018-19
 —■ 2017-18
 —x 2016-17

US soybean meal export commitments on or near 05/17/2020



Source: USDA & FI

Crop year to date US export sales



■ 2014-15 ■ 2015-16 ■ 2016-17 ■ 2017-18 ■ 2018-19 ■ 2019-20

Disclaimer

TO CLIENTS/PROSPECTS OF FUTURES INTERNATIONAL, SEE RISK DISCLOSURE BELOW:

THIS COMMUNICATION IS CONVEYED AS A SOLICITATION FOR ENTERING INTO A DERIVATIVES TRANSACTION.

Any trading recommendations and market or other information to Customer by Futures International (FI), although based upon information obtained from sources believed by FI to be reliable may not be accurate and may be changed without notice to customer. FI makes no guarantee as to the accuracy or completeness of any of the information or recommendations furnished to Customer. Customer understands that FI, its managers, employees and/or affiliates may have a position in commodity futures, options or other derivatives which may not be consistent with the recommendations furnished by FI to Customer.

The risk of trading futures and options and other derivatives involves a substantial risk of loss and is not suitable for all persons. In purchasing an option, the risk is limited to the premium paid, and all commissions and fees involved with the trade. When an option is shorted or written, the writer of the option has unlimited risk with respect to the option written. The use of options strategies such as a straddles and strangles involve multiple option positions and may substantially increase the amount of commissions and fees paid to execute the strategy. Option prices do not necessarily move in tandem with cash or futures prices. Each person must consider whether a particular trade, combination of trades or strategy is suitable for that person's financial means and objectives.

This material may include discussions of seasonal patterns, however, futures prices have already factored in the seasonal aspects of supply and demand, and seasonal patterns are no indication of future market trends. Finally, past performance is not indicative of future results.

This communication may contain links to third party websites which are not under the control of FI and FI is not responsible for their content. Products and services are offered only in jurisdictions where solicitation and sale are lawful, and in accordance with applicable laws and regulations in each such jurisdiction.